

CareerTech 101: How Can We Help You?

Jessica Ventris, Director of Academic Affairs

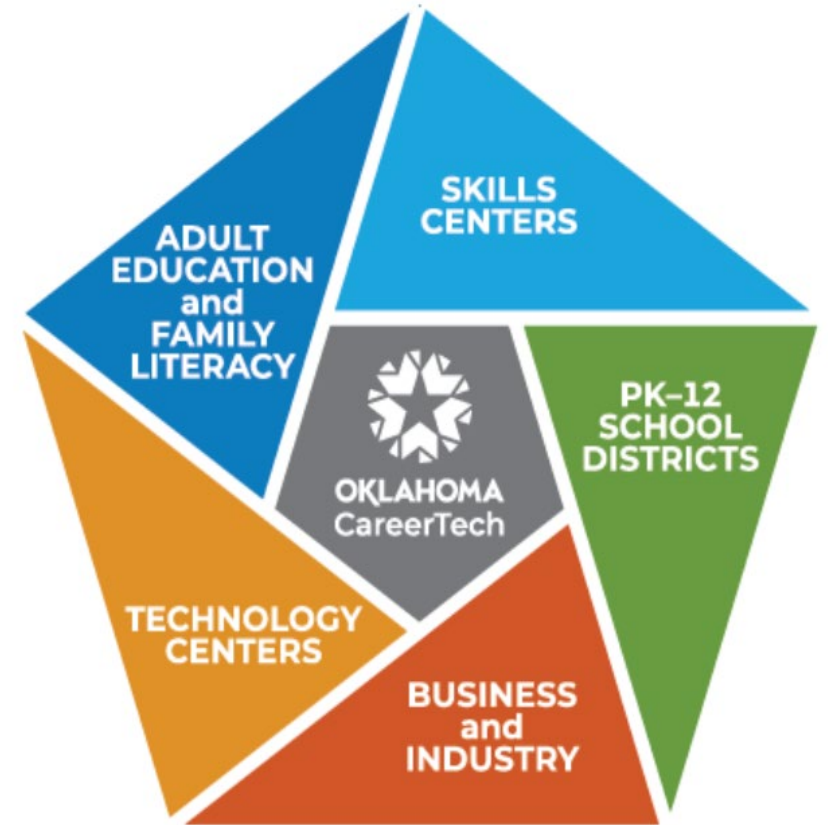
Shawna Nord, Manager Counseling and Career Development



OKLAHOMA
CareerTech

One of the strengths of the CareerTech System is its accessibility to almost every Oklahoman.

- CareerTech offerings in 397 comprehensive school districts – 1,474 teachers
- 29 technology center districts with 60 campuses – 1,305 teachers
- Business and industry training attracts new industry and helps existing businesses expand and prosper – 8,764 businesses (*number of businesses is duplicated in some categories*)
- 16 Skills Centers sites (inmates/juvenile offenders) – 40 teachers
- 32 adult basic education providers at 118 sites



CareerTech Delivers

CAREERTECH DELIVERS

- 397 PK-12 School Districts
- 29 Technology Center Districts
- 16 Skills Centers Sites
- 32 Adult Education & Family Literacy Providers

FY23 ENROLLMENTS

Secondary

PK-12 Schools.....	139,505
Technology Centers	21,765
Total Secondary Enrollment.....	161,270

Postsecondary

Full-Time Programs	9,875
Industry-Specific Training.....	257,941
Adult and Career Development....	42,077
Training for Industry.....	7,400
Skills Centers - Full-Time	269
Skills Centers - Short-Term.....	722
Adult Education & Family Literacy ...	10,081

Total Postsecondary Enrollment..... 328,365

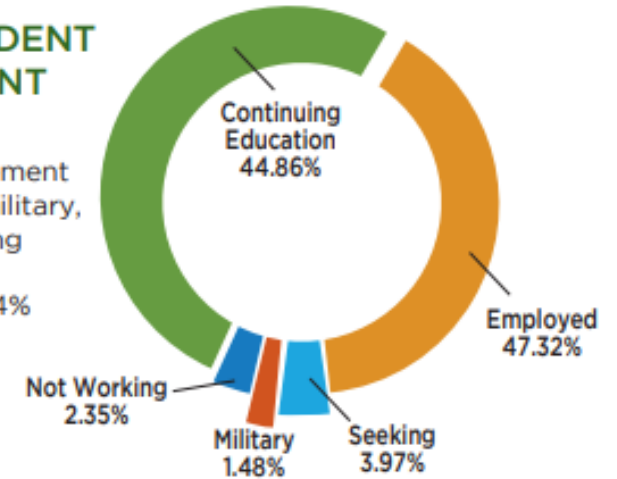
Total Enrollment—All Categories 489,635

NOTE: Students enrolled are duplicated in some categories.



FY22 STUDENT PLACEMENT RATE

Positive placement (employed, military, and continuing education for completers 94%



FY23 SECONDARY ENROLLMENTS

(unduplicated within grade level)

	Grade	CareerTech	Statewide	Percent Served
	5th	1,633	49,701	3.29%
	6th	10,939	50,221	21.78%
	7th	13,322	51,512	25.86%
	8th	19,484	53,055	36.72%
	9th	20,539	56,166	36.57%
	10th	20,576	53,637	38.36%
	11th	23,020	49,012	46.97%
	12th	22,279	45,117	49.38%
Totals	5th-12th	131,792	408,421	32.27%
	9th-12th	86,414	203,932	42.37%

NOTE: Total secondary CareerTech enrollment is 161,270 due to students who enroll in more than one program.

INDUSTRY CERTIFICATES

- 22,520 industry-endorsed certificates earned (FY22)

For information about CareerTech teacher certification, contact:

Laurie Richison

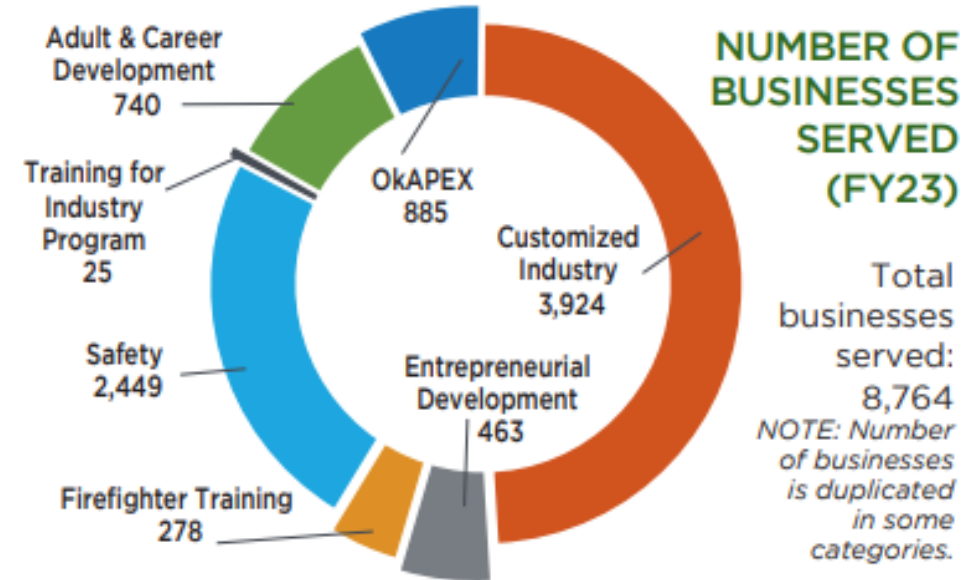
Teacher Certification Specialist

laurie.richison@careertech.ok.gov

or

certify@careertech.ok.gov

405.743.5482



CAREERTECH STUDENT ORGANIZATIONS

In FY23 more than 98,000 students learned important leadership skills as members of co-curricular CareerTech student organizations:



How to start an Occupational Program?

Contact the occupational program manager, they will walk you through the entire process.

Agricultural Education

Scott Nemecek, State Program Manager- 405.743.5495

scott.nemecek@careertech.ok.gov

Business, Marketing and Information Technology Education (BMITE)

Mark Burch, State Program Manager- 405.743.5121

mark.burch@careertech.ok.gov

Family and Consumer Sciences Education

Holly Hanan, State Program Manager- 405.743.5465 Holly.Hanan@careertech.ok.gov



How to start an Occupational Program?

Contact the occupational program manager, they will walk you through the entire process.

Health Careers Education

Lara Morris, State Program Manager- 405.743.5106 Lara.Morris@careertech.ok.gov

Science, Technology, Engineering and Mathematics (STEM)

Tonja Norwood, State Program Manager- 405.743.5187 Tonja.Norwood@careertech.ok.gov

Trade and Industrial Education

Renee Reed, State Program Manager- 405.743.5145 Renee.Reed@careertech.ok.gov



How Does CareerTech Courses Differ from Traditional Elective Courses?



Some CTE courses have been approved for Oklahoma Promise



Funding assistance and supplemental program instruction



Some courses are tied to industry certification



Full-time programs are tied to industry certification(s)



Full-time programs and many CTE courses have built-in simulated work experience



CTE offers courses in Work-based Learning, Capstone, as well as program specific internships.

How can CareerTech help your school?

- [Transcript and Academic guidance](#) for CTE courses and full-time programs
- Most CareerTech programs can count as PSO points **and/or** *satisfy* the 3rd Math Credit for students on a CORE graduation pathway.
- [Lottery grants](#)
- [Perkins Innovation grants](#) (Up to \$50,000.00 year one, Up to \$50,000.00 year two)- applications are due by May 3, 2024.
 - There are 8 Innovative Grants that all eligible recipients can apply for:
 1. Career Development and Programs of Study
 2. Career Pathways, Workforce, and Industry Partnerships
 3. Supporting CTE Special Populations
 4. High Growth and Emerging Technologies
 5. Innovation in Career Exploration
 6. Innovative Strategies to Recruit and Retain - High Schools/Tech Centers That Work & Other
 7. CTE New Program Grant
 8. Improving Academic Proficiency (New)





The OKCareerGuide team has created multiple opportunities to provide you with the training you need, both face-to-face and online. You'll find regularly scheduled webinars, links to our latest material on YouTube, basic training guides and more [here](#).



What is OKCareerGuide and what is its purpose?

- OKCareerGuide.org is a **FREE** online platform available for grades 6th – 12th AND adults. OKCareerGuide provides:
 - ✓ Career Assessments
 - ✓ Explore Occupations/Explore Majors
 - ✓ Plan for Education/Plan for Work
 - ✓ My Job Search Tools (Resume, Cover Letter, References templates)
 - ✓ Finance 101
- OKCareerGuide ALSO provides **ICAP** support/solutions for middle and high school:
 - ✓ Career assessments for 6th-12th grades
 - ✓ My Goals
 - ✓ My Ed Plans
 - ✓ ICAP Oklahoma

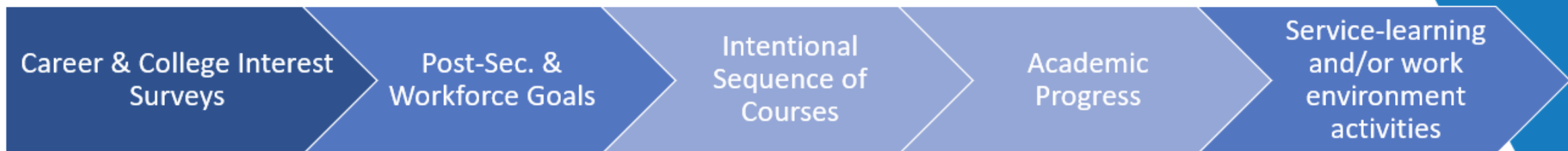


OKLAHOMA
CareerTech

OKCareerGuide leads all Oklahomans through a proven career development process



HB 2155 – The ICAP Bill



Connect 2 Business- Updates

Creating a Dynamic Talent Pipeline

Kuder Connect 2 Business® (C2B) is an online platform creating awareness and building relationships between individuals and businesses by sharing work-based learning opportunities aligned to career interests. The platform helps local employers promote and fill openings ranging from internships and apprenticeships to part-time jobs and beyond while supporting students' Individual Career and Academic Plan requirements.

CONNECTING EDUCATION & ECONOMIC DEVELOPMENT



BUILD AWARENESS

Users create a custom business profile to highlight key details about their business to engage users.



DRIVE ENGAGEMENT

Business users post opportunities, including internships, part-time jobs, and more. They can also track views and interest.



STRENGTHEN CONNECTIONS

Schools, workforce agencies, and businesses connect to create a strong talent pipeline from education to employment.

C2B Business Benefits

- Provide opportunities to individuals with career interests aligned to your industry.
- Track views and interest related to your posted opportunities for students.
- Collaborate directly with schools and workforce agencies to support local initiatives and programs.
- Build a talent pipeline for today's competitive workforce.

WBL coordinator roles can upload opportunities and make it private for their school.

kudernavigator **OK Career Guide**

Manage Opportunities / Opportunity Details / Edit Opportunity

Basic Information Opportunity Details Related Occupations

EDIT OPPORTUNITY

Mock Interview Opportunity - Elevate Your Interview Skills

To ensure proper pathway planning, please select the most relevant group, sub-group, and occupation related to this opportunity.

RELATED OCCUPATIONS

Dietitians and Nutritionists

+

Private Opportunity

ⓘ If you make this opportunity public, it cannot be changed to private later. However, if you make it private first, you can later switch it to public. Be aware that once public, it cannot be made private again.

This opportunity is currently public.

< Back Cancel Save



Agricultural Education

Hanna Brown, Northeast Area Program Specialist

405.743.5488

Hanna.Brown@careertech.ok.gov



Ag Ed State Staff



Scott Nemeck –State
FFA Ag Ed Manager



Rose Bonjour-
Central Area
Program Specialist



Allen Miller-
Northwest Area
Program Specialist



Hanna Brown –
Northeast Area
Program Specialist



Trevor Lucas –State
FFA Executive
Secretary



Kurt Murray-
Southwest Area
Program Specialist



Clark Long-
Southeast Area
Program Specialist



Enrollment/Membership/Eligibility

780:20-3-5(e) FFA Membership Eligibility. Any student in Grades 8-12 must be regularly enrolled in a year-long course of study in Agricultural Education at school in order to be eligible to participate in any FFA activity. For the purpose of this section; at school is defined as physically present and supervised in a classroom by a certified agricultural education instructor. Exceptions are granted to students who attend a school with block schedule and who, therefore, may have completed a year-long course of study in Agricultural Education in one semester. Students in the seventh grade are not eligible for the FFA membership in Oklahoma. Annual local, state, and national FFA dues must also be paid in order to be eligible to participate in any FFA activity.

Enrollment Limits

- 25 Per Class
- 15 Per Lab Class (Shop, Horticulture)



Scheduling

780:20-3-2(c)(2)(A)(iii) Course prerequisite. Introduction to Agricultural Science is the prerequisite for all other agricultural education courses with the exception of eighth-grade Agricultural Orientation

Ag 1 Waiver – Can be used in certain situations. This is not a pass for students to not complete Ag 1. This needs to be approved by the state office.

780:20-3-2(b.)(5.)(A). Two planning periods. Teachers who supervise students' agricultural experience programs shall have a minimum of two periods to plan, supervise, and coordinate the activities of student learners (see 780:20-3-1(e) and 780:20-3-2(b)(7)(A)). For schools on non-traditional schedules, teachers shall have the equivalent of a minimum of 90 minutes per day for planning and supervision of students. It is recommended that the last hour of the school day be utilized as one of the planning periods. Schools offering Agricultural Education courses the final period of the day must provide a written explanation to the program administrator.



Award Areas

State Degrees

We ask students to submit a final transcript to be considered for the highest degree Oklahoma FFA awards. It is their responsibility to get with school officials to have this completed and submitted on time. The timeline is **late December to January**.

Career Passports/ Competency Testing

Our students can be certified in Agricultural courses by taking the correlating test. This is usually set up by the Ag Instructor and the schools testing liaison. The test scores and submission list are due to our office **March 1**.



Health Careers Education

Lara Morris, State Program Manager-
405.743.5106

Lara.Morris@careertech.ok.gov



Health Science Education Staff

Program Manager

Lara Morris

HOSA State Advisor

Amy Warner

Program Specialists

Susie McEachern-Lauer,
Gilda Austin, Emily Gedra

Administrative Assistant

Kelsey Gray

Part Time Asst.

Jeanette Furlong



OKLAHOMA
CareerTech

Full Time Programs in Comprehensive High Schools

- > Foundation Courses are a four-course sequence based on National Health Science Standards.
- > Equal to Tech Center Core, Med Term, A & P and CPR/FA
 - Foundations of Healthcare Professions
 - Essentials of Healthcare Practices
 - Health Careers Capstone
 - Anatomy and Physiology for Science Credit



Contents of Health Core Include:

- > Safety
- > Legal and Ethical Issues
- > Employability Skills
- > Health Maintenance
- > Technical Skills
- > Information Technology
- > Academic Foundations
 - Medical Math
 - Medical Terminology
 - Anatomy and Physiology
- > Communications
- > Teamwork
- > Systems



Full Time Programs in Comprehensive High Schools & Middle School

> Additional course options:

- Sports Medicine
- Behavioral Health
- Public Health
- Medical Terminology

> Future courses:

- Introduction to A & P and Medical Terminology (1 credit)
- Exercise Science
- Forensic Science



Full Time Programs in Comprehensive High Schools

Recent increase in funding to \$8500 and \$2200 for teacher stipend

Suggested uses of funding:

- Classroom computers
- Online curriculum or Textbooks
- Teacher professional development
- Community service project supplies
- Event preparation materials
- CTSO uniforms, registration costs, substitute pay, bus driver costs



OKLAHOMA
CareerTech

HOSA: Future Health Professionals

- > Leadership branch of Health Science Education
- > Middle School, High School and Post-Secondary/Collegiate
- > Affiliation in 2023 was 6734 members; 7117 members for 2024!
- > Now have active chapters in multiple higher education settings
- > Charter state of 50-year-old organization
- > New HOSA State Advisor, Amy Warner



Questions?

Call or Email Lara Morris at
405.743.5106

Lara.morris@careertech.ok.gov



OKLAHOMA
CareerTech

Science, Technology, Engineering and Mathematics (STEM)

Tonja Norwood, State Program Manager
405.743.5187

Tonja.Norwood@careertech.ok.gov



Science, Technology, Engineering and Mathematics

About STEM

Calendar of Events

Career Planning

Certifications and Testing

Course Information



Funding

Reports and Forms

STEM Branding

STEM Professional Development

Programs

STEM Employment

Resources



Success Stories

Science, Technology, Engineering and Mathematics (STEM)



OKLAHOMA
CareerTech

STEM Science, Technology,
Engineering & Mathematics

[STEM Impact Flyer](#) - This is a great tool to use to show parents, administrators, counselors, legislators, business & industry partners and others! It gives important information about our STEM programs in Oklahoma.

STEM FAQ'S

[Contact Us](#)
[New Program](#)
[New Teacher Academy](#)
[Oklahoma Summit](#)
[Teacher Certification](#)
[Safety Resources](#)
[STEM Action Items](#)

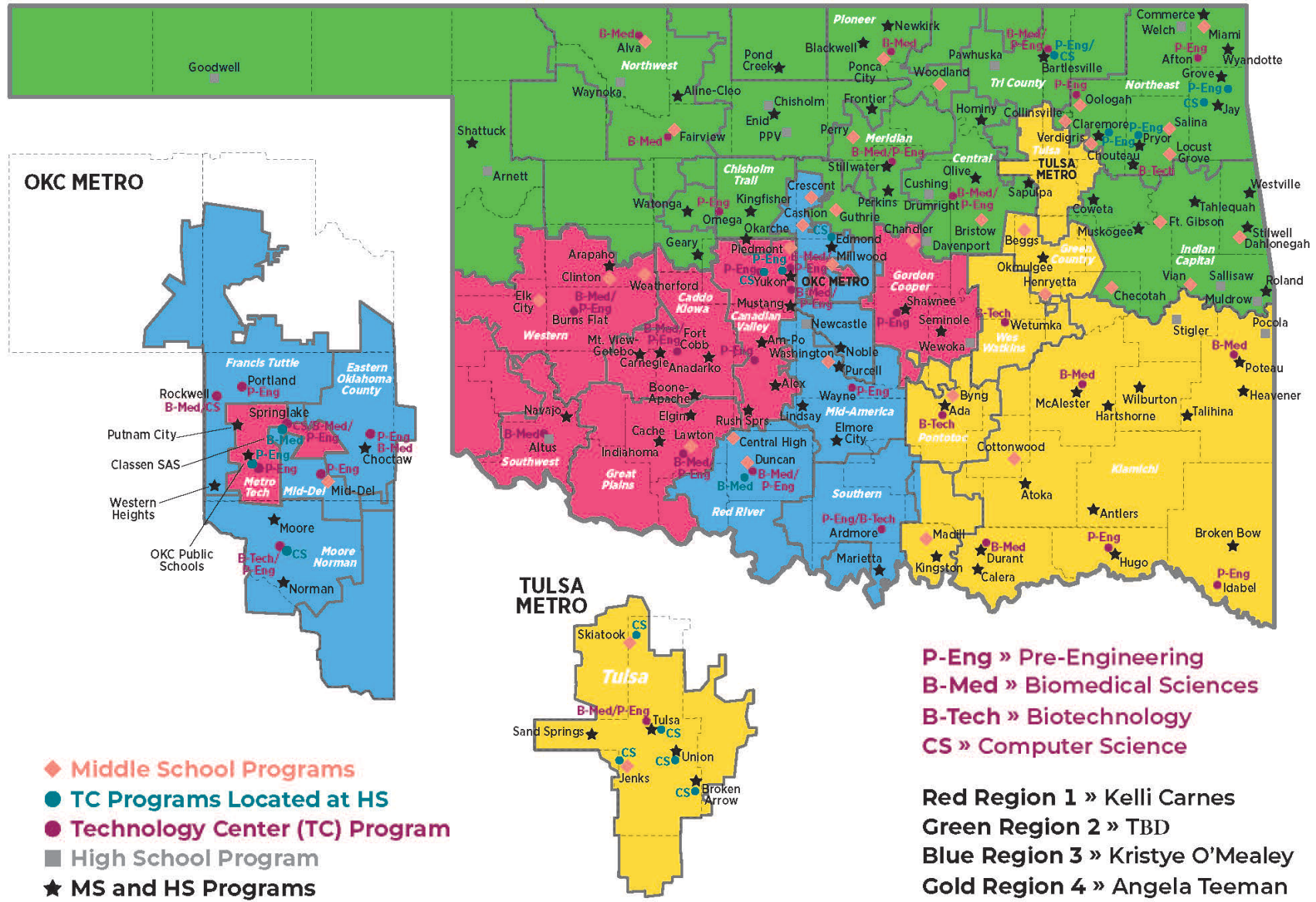
STEM RESOURCES

[Focus Field of Study](#)
[Important Dates](#)
[K12 Evaluations](#)
[Testing](#)
[Advisory Handbook](#)
[OSU STEM Hub](#)
[STEM Mid-Winter](#)

CAREER PLANNING

[WBL Toolkits](#)
[POS - Tech Center](#)
[POS - College](#)
[POS - Perkins](#)
[Tuition Scholarships TC](#)
[Express Partnership](#)
[Job Openings](#)

2023-24 STEM PROGRAMS



STEM Programs



Science, Technology, Engineering and Mathematics

About STEM

Calendar of Events

Career Planning

Certifications and Testing

Course Information

Funding

Reports and Forms

STEM Branding

STEM Professional Development

Programs

STEM Employment

Resources

Technology Student Association

<https://oklahoma.gov/careertech/educators/stem/programs.html>

Program Information

[COURSE DESCRIPTION GUIDE >](#)

[MS SEARCH COURSES >](#)

[HS SEARCH COURSES >](#)

[STEM CAREER CLUSTER >](#)

[SEQUENCE OF COURSES >](#)

[ASSESSMENT GUIDE >](#)

OCAS Subject Codes

[ALL CAREERTECH OCAS CODES >](#)

[STEM OCAS CODES >](#)

[SDE OCAS CODES >](#)

Science, Technology, Engineering and Mathematics

[About STEM](#)

[Calendar of Events](#)

[Career Planning](#)

[Certifications and Testing](#)

[Course Information](#)

[Funding](#)

[Reports and Forms](#)



Engineering
Exploration



Health Science
Explorations



IT Exploration



Architecture &
Construction
Exploration



Arts, AV, and
Communication
Exploration



Natural Resources
Exploration



Manufacturing
Exploration



Transportation
Exploration



OKLAHOMA
CareerTech



OKLAHOMA
CareerTech

STEM

Science, Technology,
Engineering & Mathematics

CHOOSING COMPETITIONS



TSA's program of activities enhances student education through its STEM-based competitions, which promote work-based learning and hands-on experiences. Competitions can be integrated easily into the classroom curriculum, or they can be used as an additional resource for career pathway initiatives. Through TSA's competitions, student members have the opportunity to develop real-world skills, strengthen their leadership abilities, and explore career opportunities.

The competitions listed below are grouped in categories. However, some competitions could fit into multiple categories. To see the careers associated with each competition, go to <https://www.oktsa.org/competitive-event-information> and click on the name of the competition you are interested in.

Middle School: Competitions

Architecture and Construction Technology

- Construction Challenge
- **Project Fair
- Off the Grid
- Structural Engineering

Communications Technology

- Challenging Technology Issues
- Children's Stories
- Essays on Technology
- Prepared Speech
- **Creed
- Promotional Marketing

Computer Science and Information Technology

- Coding
- Cybersecurity
- Data Science and Analytics
- Foundations of IT
- Website Design

Leadership

- Career Prep
- Chapter Team
- Community Service Video
- Leadership Strategies
- Tech Bowl

Manufacturing and Transportation Technology

- Dragster
- Flight
- **Droneworks
- Junior Solar Sprint
- Mass Production
- Mechanical Engineering
- Microcontroller Design
- VEX IQ Challenge

STEM (General)

- CAD Foundations
- Electrical Applications
- Inventions and Innovations
- Problem Solving
- Technical Design
- Video Game Design
- **Rube Goldberg

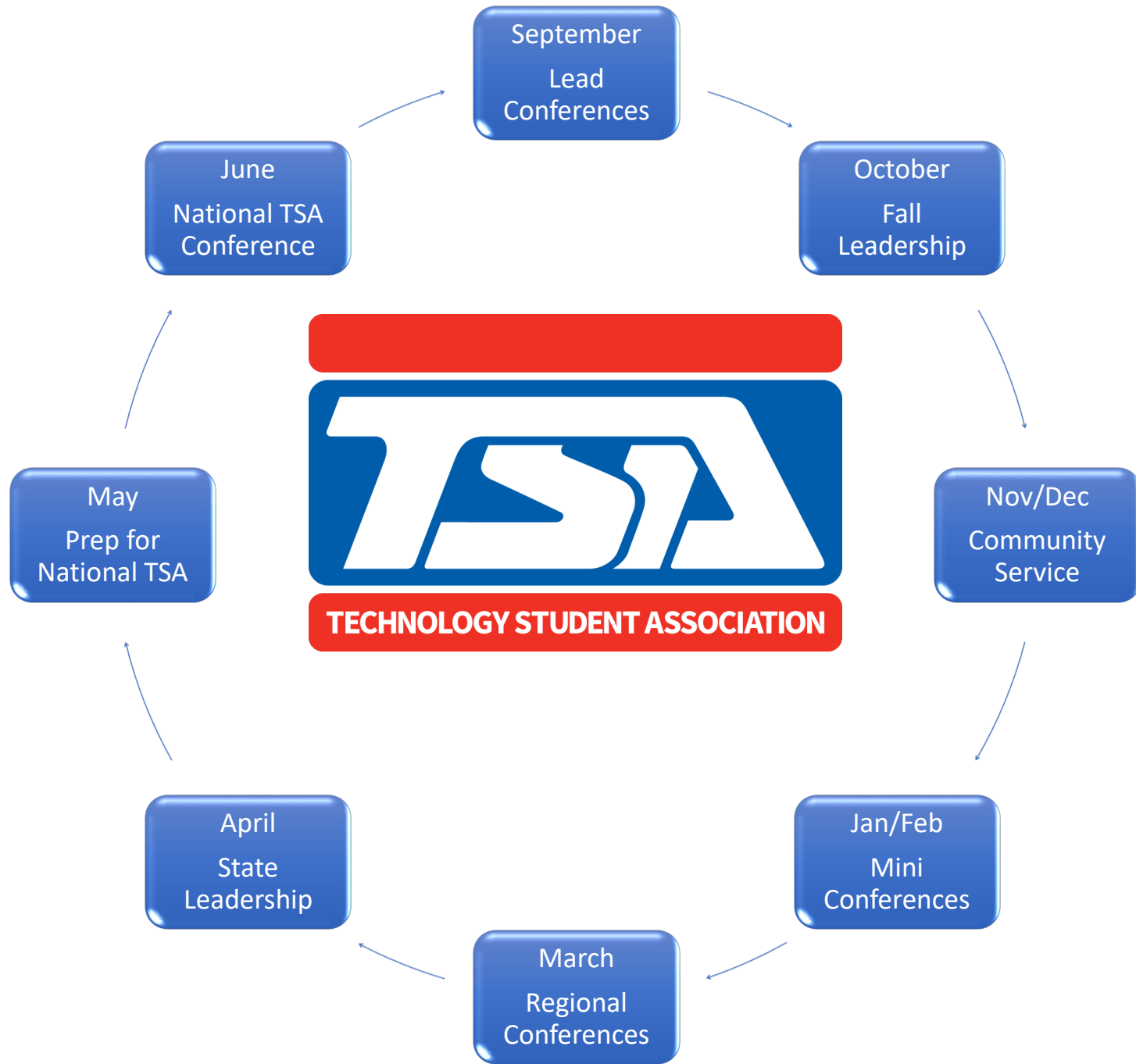
STEM and the Arts

- Digital Photography
- STEM Animation
- **Pin Design
- **T-shirt Design

Technology

- Biotechnology
- Forensic
- Medical
- System

Technology Student Association



September	TSA LEAD Conference TSA Kickoff
October	TSA Fall Leadership
November/December	Community Service
January/February	TSA Mini Conference CTSO Month
March	TEAMS Challenge TSA Regional
April	State Leadership
May	Prep for Nationals
June	National Conference

CareerTech Testing Center

Jennifer Palacio, Assessment Manager

405.743.5160

Jennifer.Palacio@careertech.ok.gov

Corey Clapp, Career Readiness & Badging Specialist

405.743.5447

Corey.Clapp@careertech.ok.gov



OKLAHOMA
CareerTech

CareerTech Digital Badges



OKLAHOMA
CareerTech



Digital credentials help students tell their story



From their first class, learners are acquiring the skills employers need. Digital credentials provide the proof learners need to build their professional profile.

While completing a CareerTech program, students can leverage digital badges to find part-time employment, internships and work-study programs that propel their learning and career pathways.



- Validate skills in job readiness
- Highlight skills for recruiting
- Explain your own strengths
- Easily communicate marketable and technical skills
- Connect what has been learned to career opportunities



OKLAHOMA
CareerTech

Issuing/Accepting a Digital Badge

1. Student earns a credential within an approved Oklahoma CareerTech program
2. Information is entered in CTIMS - Certification/WBL Real-Time Collection
3. Career Readiness & Badging Specialist will run reports from CTIMS
4. Student receives email from cttc@careertech.ok.gov
5. Student receives email from admin@credly.com
6. Student creates their account on Credly



Where to find more information.



<https://oklahoma.gov/careertech/educators/certifications-and-badging/badging.html>

Corey Clapp

Career Readiness & Badging Specialist

Corey.clapp@careertech.ok.gov

405-743-5447



OKLAHOMA
CareerTech

Adult Education and Family Literacy

Lance Allee, AEFL Program Specialist (Western Region)

405.880.5235

Lance.Allee@careertech.ok.gov



AEFL Locations and Services

Adult Education sites

32 Adult Education and Family Literacy (AEFL) providers across the state.

- K-12
- Career Tech
- 2 Year State Colleges
- 4 Year Universities
- Non-Profit Organizations
- Department of Corrections

Services provided

- High School Equivalency preparation classes
- English as a Second Language (ESL)
- Correctional / Institutional Education
- English Literacy and Civics Education



OKLAHOMA
CareerTech

Eligibility Requirements

In order to enroll in AEFL classes or take the GED/ HiSET test, you must meet these criteria:

- You must be at least 16 years old.
- You must not be enrolled in high school.

NOTE: You do not have to be a resident of Oklahoma to take the HiSET or GED in Oklahoma.



HSE Options in Oklahoma

HiSET[®]

In the state of Oklahoma, there are two tests that can be taken to attain a high school equivalency diploma.

Since 2014, an eligible individual can take the GED test or the HiSET test.



Those who pass one of the two approved tests will receive the state's official high school equivalency diploma, a credential issued by the Oklahoma Department of Education.



HSE Subject Areas

GED

- Language Arts
- Math
- Social Studies
- Science

HiSET

- Language Arts – Reading
- Language Arts – Writing
- Math
- Social Studies
- Science



HSE Comparison

GED

- Test Format: Computer-Based
- Cost: \$164 Full Battery
- Receipt of Scores: Online scores returned within 24 hours of completing each module.
- Free practice test available.
- GED Ready practice test(s)

HiSET

- Test Format: Paper / Computer-Based
- Cost: \$150.00 Full Battery for Paper Based
\$150.00 Full Battery for Computer Based
- Receipt of Scores: On average, official scores are available within 3-5 business days for multiple choice tests and 6–10 business days for essay tests. Immediate, unofficial scores for computer delivered tests are displayed at the test center upon completion.
- Free practice test available.



Take Your Test From Home

GED

- Cost of the exam: \$164 (Total Cost Including GED Ready = \$191.96)
- You are required to take the GED Ready practice test before taking the official GED test online. \$6.99 per subject area.
- Available 24 hours a day.

HiSET

- Cost of the exam: \$200
- No practice test required.
- Available from 3:00 am to 6:00 pm.



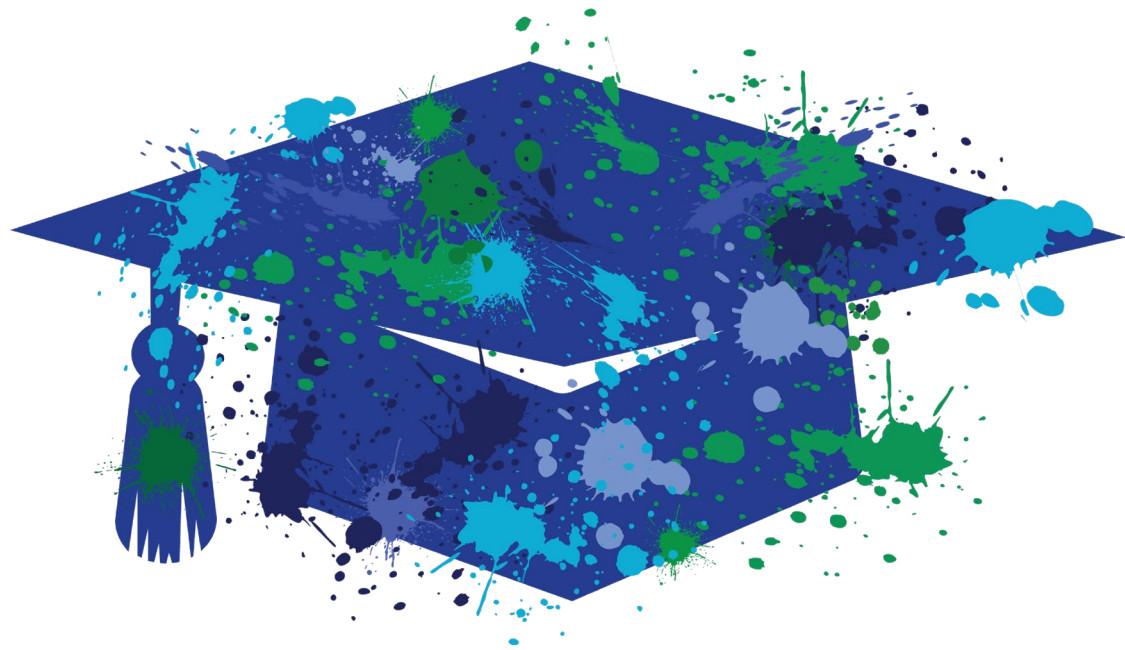
Contact Information

Oklahoma Department of Career and Technology Education
AEFL State Office - 405-743-5556

Lance Allee – AEFL Specialist
Lance.Allee@careertech.ok.gov

405-880-5235





New FAFSA Graduation Requirement

Begins 2024-25



OKLAHOMA STATE REGENTS
FOR HIGHER EDUCATION

Improving our future by degrees



Oklahoma College Assistance Program

FAFSA Graduation Requirement & the Oklahoma FAFSA Data Portal

2:10 – 3:00
Redbud Room



Visit the Oklahoma State
Regents for Higher Education
exhibit table for more
information.



OKLAHOMA STATE REGENTS
FOR HIGHER EDUCATION

Improving our future by degrees

