



OKLAHOMA
CareerTech

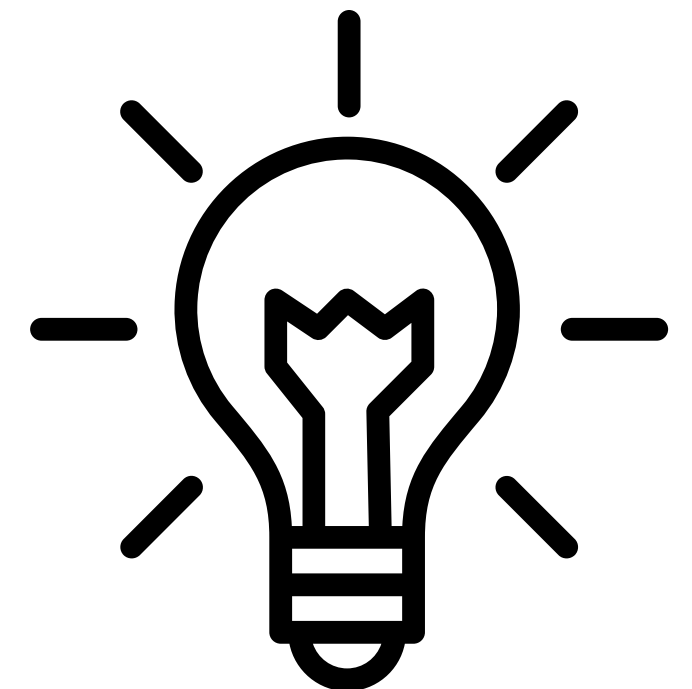
Perkins INNOVATIVE GRANTS

Jordan Duck

PURPOSE

Develop new and sustainable projects for high need areas

More innovative projects than standard classroom projects

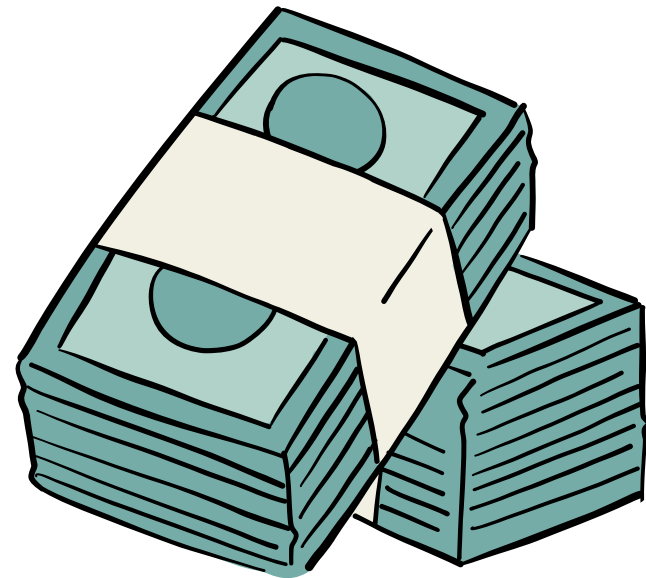


FUNDING AVAILABLE

15% of Perkins Allocation

\$2.2 million in FY23

\$2.3 million in FY24



OVERVIEW

- ✦ Two Year Cycle
- ✦ Request Amount
- ✦ Mid-Cycle Monitoring & End of Cycle Review
- ✦ Project Sharing
- ✦ Multiple Grants
- ✦ Sustainable Projects

GRANT OPPORTUNITIES

**CAREER DEVELOPMENT
AND PROGRAMS OF STUDY**

**HIGH GROWTH AND EMERGING
TECHNOLOGY**

**SUPPORTING CTE SPECIAL
POPULATIONS**

IMPROVING ACADEMIC PROFICIENCY

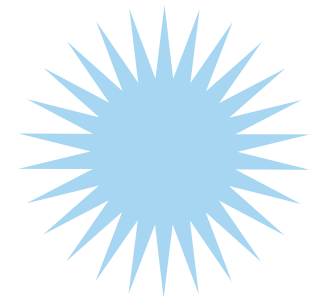
**CAREER PATHWAYS, WORKFORCE,
AND INDUSTRY PARTNERSHIPS**

INNOVATION IN CAREER EXPLORATION

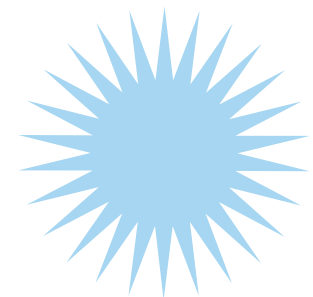
**INNOVATIVE STRATEGIES TO RECRUIT
AND RETAIN CTE INSTRUCTORS - OTHER**

CTE NEW PROGRAM

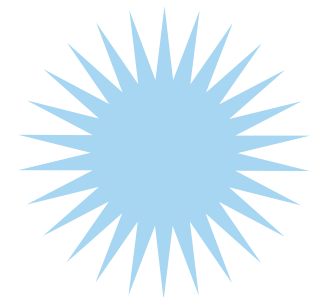
CAREER DEVELOPMENT AND PROGRAMS OF STUDY



Designed to assist individuals in making career choices and creating full Programs of Study that will prepare them for those careers.

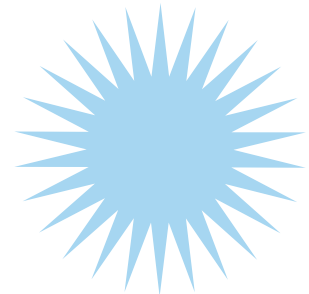


Examples: RoadTrip Nation Curriculum, ASCA Training, College and Career Advisor, VR Program Tours, Mentoring Opportunities

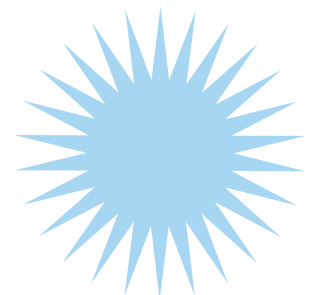


Up to \$50,000 for year one and up to \$50,000 for year two

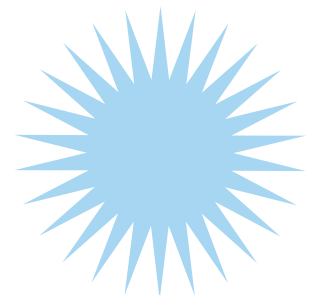
SUPPORTING CTE SPECIAL POPULATIONS



Used to support special population ODCTE students explore career options and transition into post-secondary education, training, or employment.

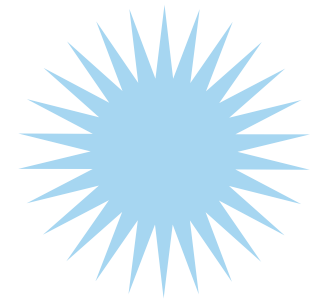


Examples: Innovative Adaptive Equipment, MiFi's, CERT Culinary Program, Instructor Training

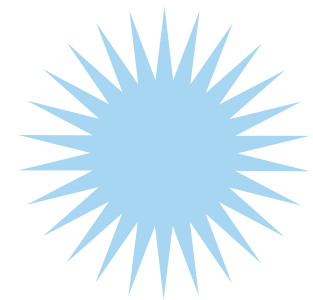


Up to \$50,000 for year one and up to \$50,000 for year two

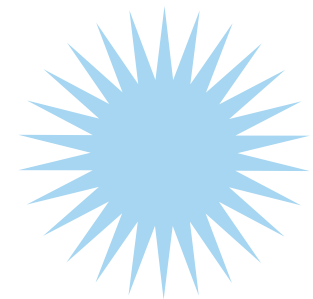
HIGH GROWTH & EMERGING TECHNOLOGY



Implement innovative CareerTech programs that embrace rigorous academics and technical learning skills that align with emerging workforce needs and lead to high skill, high wage job opportunities.

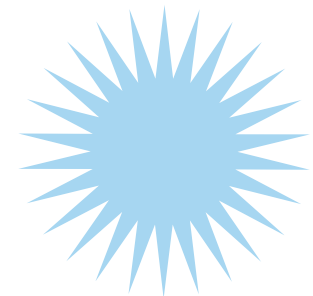


Examples: Electric Vehicle Maintenance Curriculum and Equipment, VR Coding, Develop Aerospace Program , 3D Anatomage Table

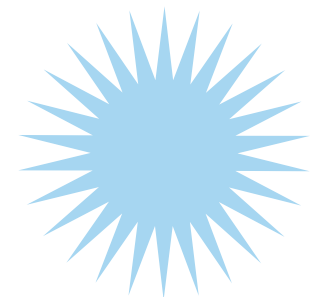


Up to \$50,000 for year one and up to \$50,000 for year two

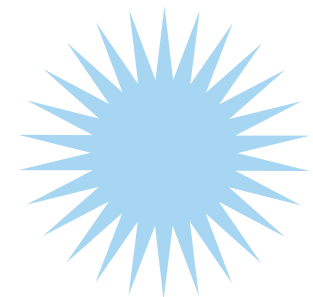
CAREER PATHWAYS, WORKFORCE, AND INDUSTRY PARTNERSHIPS



Supports the development of new, innovative career pathways or partnerships that lead to high skill, high wage, or in-demand occupations.

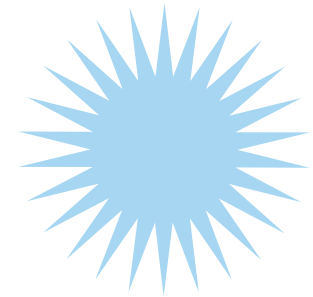


Examples: Career Development and Community Outreach Advisor, Thunder Partnership to enhance broadcasting program, Leadership Event for Students (develop leadership and soft skills, host mock interviews, resume building)

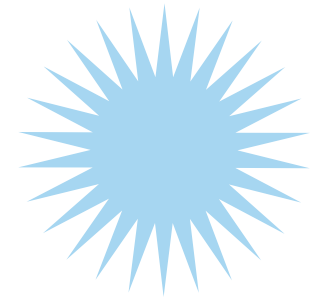


Up to \$50,000 for year one and up to \$25,000 for year two

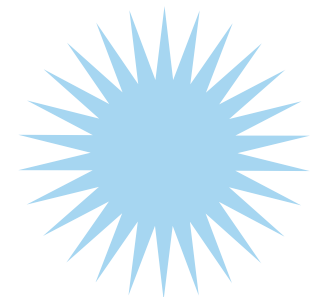
INNOVATION IN CAREER EXPLORATION



Designed to develop middle school STEM exploratory programs that utilize project-based learning and increase academic rigor and student achievement.

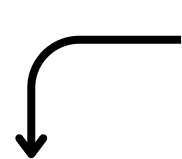


Examples: PLTW Curriculum, App Creation, New STEM Programs & Labs

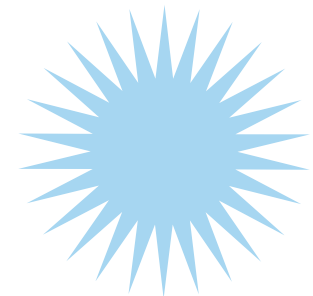


Up to \$50,000 for year one and up to \$50,000 for year two

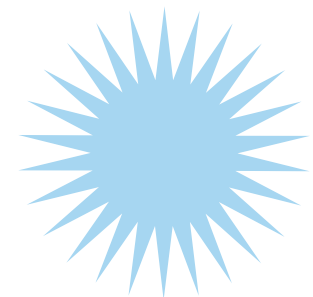
New for FY25!



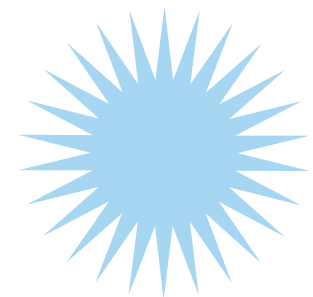
INNOVATIVE STRATEGIES TO RECRUIT AND RETAIN CTE INSTRUCTORS - OTHER



Supports the development of new innovative strategies and enhance existing strategies to recruit and retain CTE instructors.

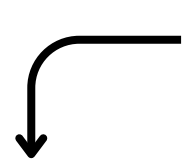


Examples: Professional Development (conference registration, mileage, airfare, lodging, per diem), Flippen Group Training, Clifton Strength Finder Codes

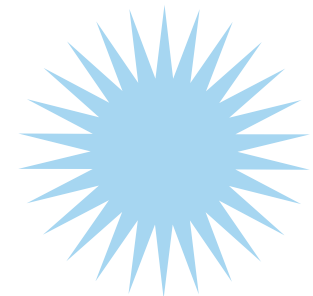


Up to \$20,000 for year one and up to \$20,000 for year two

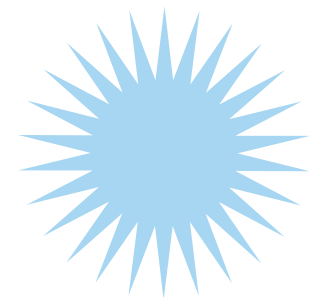
New for FY25!



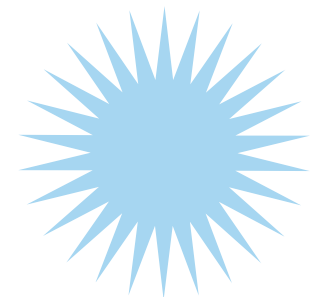
IMPROVING ACADEMIC PROFICIENCY



Designed to increase academic outcomes in English Language Arts, Science, and/or Mathematics

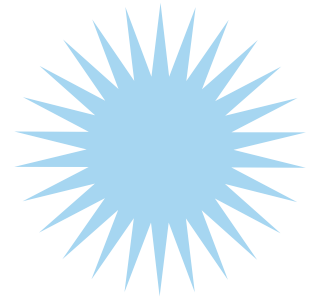


Funds can be utilized to implement strategies during or after school hours.

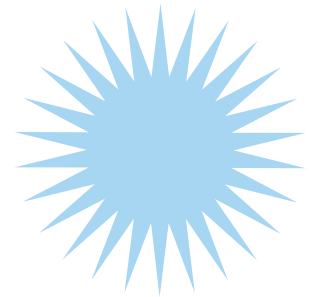


Up to \$25,000 for year one and up to \$25,000 for year two

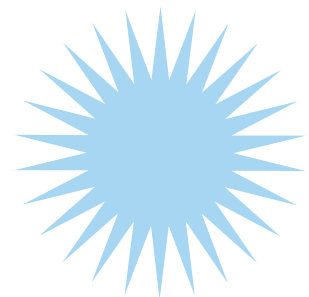
CTE NEW PROGRAM



The purpose of this grant is to provide startup funding for new CTE programs



Includes any program approved within the past three years. Applicants can only receive one grant within the three year period



Up to \$25,000 - one year grant

ELIGIBILITY REQUIREMENTS

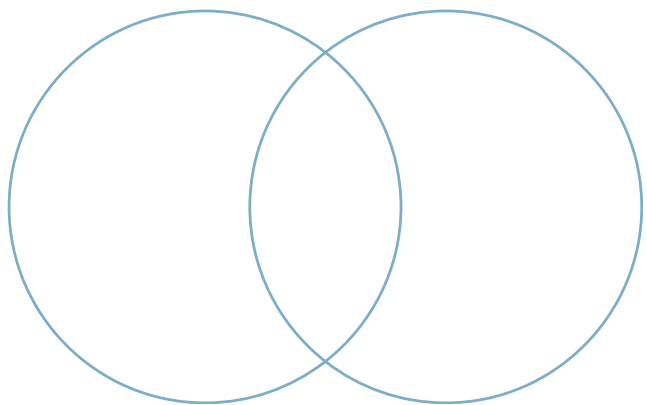
- ✦ Secondary schools must meet the \$15,000 allocation requirement
- ✦ Technology Centers and Post-Secondary institutions must meet the \$50,000 allocation requirement
- ✦ Consortiums must write grant application to include all schools
- ✦ Successful completion of the Comprehensive Local Needs Assessment (CLNA) - must align with priorities
- ✦ Submitted and approved Form 2

The background consists of a light blue field on the right and a white field on the left. A thick white arrow shape points from the white area towards the blue area, starting from the left edge and ending near the center. The word "Resources" is written in white, sans-serif font on the blue background.

Resources

IMPORTANT DATES

-
- ✓ March 1 - Grants Opened
-
- ✓ Mid-March - Allocation & Option Notices Emailed to Superintendents
-
- ✓ May 3 - Grants Close
-
- ✓ July - Approval & Rejection Notices Emailed
-



Questions?

Jordan Duck

jordan.duck@careertech.ok.gov

405.743.5401