

OKLAHOMA COVID-19 WEEKLY REPORT

Weekly Epidemiology and Surveillance Report
May 29 – June 4, 2020



PURPOSE To provide up-to-date weekly epidemiological data on COVID-19 in Oklahoma.

SNAPSHOT

	May 29 – June 4	Change ¹	Total
Confirmed cases	637	8.0%	6,907
Recovered cases ²	545	-37.7%	5,781
Deaths	18	-18.2%	344

1. Change from the week of May 22-May 28, 2020.

2. Currently not hospitalized or deceased and 14 days after onset/report.

The average age of cases was **48 years**.

The youngest case was **less than a year old** and the oldest case was **102 years**.

The average age of individuals who died was **75 years**.

The youngest individual to die from COVID-19 was **22 years** and the oldest was **101 years**.

Persons aged
50 and over

46%
of cases

Persons aged
50 and over

97%
of deaths

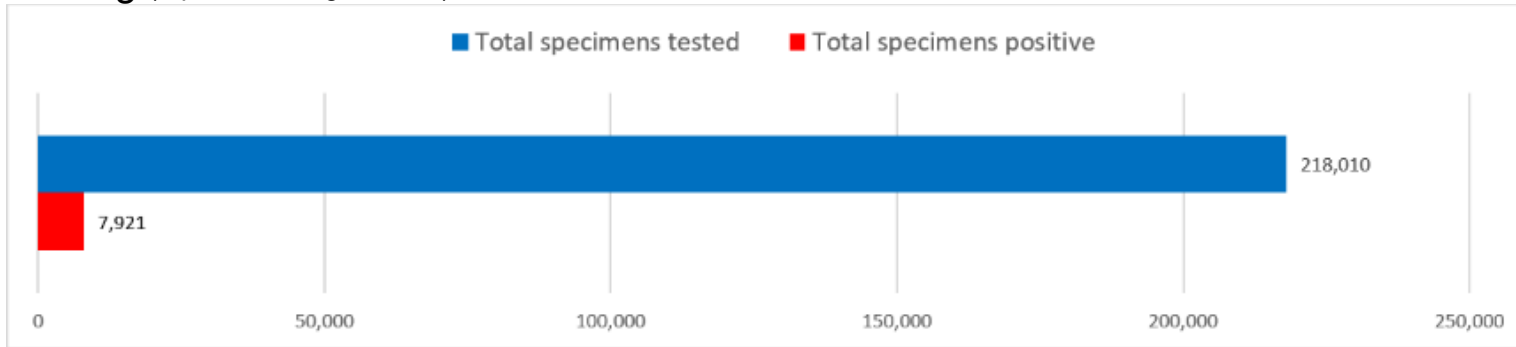
Females

53%
of cases

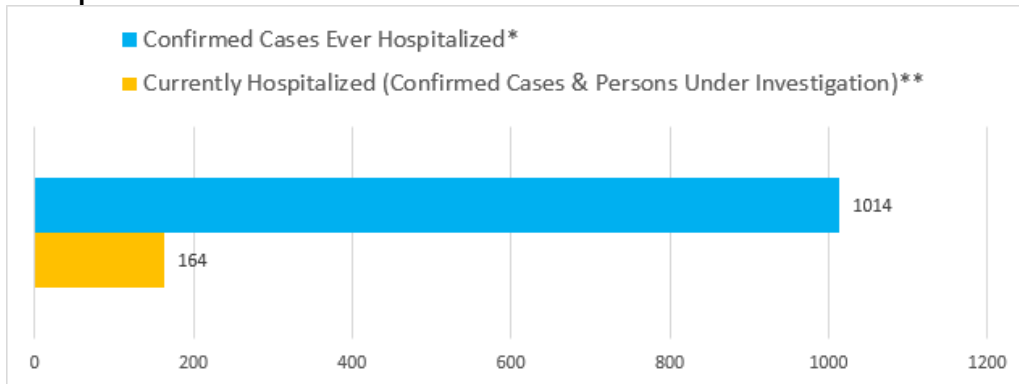
Males

51%
of deaths

Testing (reported through June 4)



Hospitalizations



*Ever hospitalized includes discharged, deceased, currently hospitalized and recovered as of 6/4/2020.

**Source OSDH Beds Survey. Note, facility response rate of 86% on 5/28/2020.

KEY POINTS

- **637** confirmed cases in the past week
8.0% increase from the week before (May 22-28).
 - **18** deaths occurred in the past week
18.2% decrease from the week before (May 22-28).
 - **1,014 (14.7%)** confirmed cases have been hospitalized
 - **218,010** specimens have been tested in total.
 - **74** counties (out of 77) have had at least one confirmed case of COVID-19
-

GATING CRITERIA

- Progress on meeting the components of the reopening guidelines proposed by the White House, called the “gating criteria”. More information available at <https://www.whitehouse.gov/openingamerica/>

Proposed State or Regional Gating Criteria to Satisfy Before Proceeding to Phased Comeback

SYMPTOMS	CASES	HOSPITALS
Downward trajectory of influenza-like illnesses (ILI) reported within a 14-day period	Downward trajectory of documented cases within a 14-day period	Treat all patients without crisis care
AND	OR	AND
Downward trajectory of covid-like syndromic cases reported within a 14-day period	Downward trajectory of positive tests as a percent of total tests within a 14-day period (flat or increasing volume of tests)	Robust testing program in place for at-risk healthcare workers, including emerging antibody testing

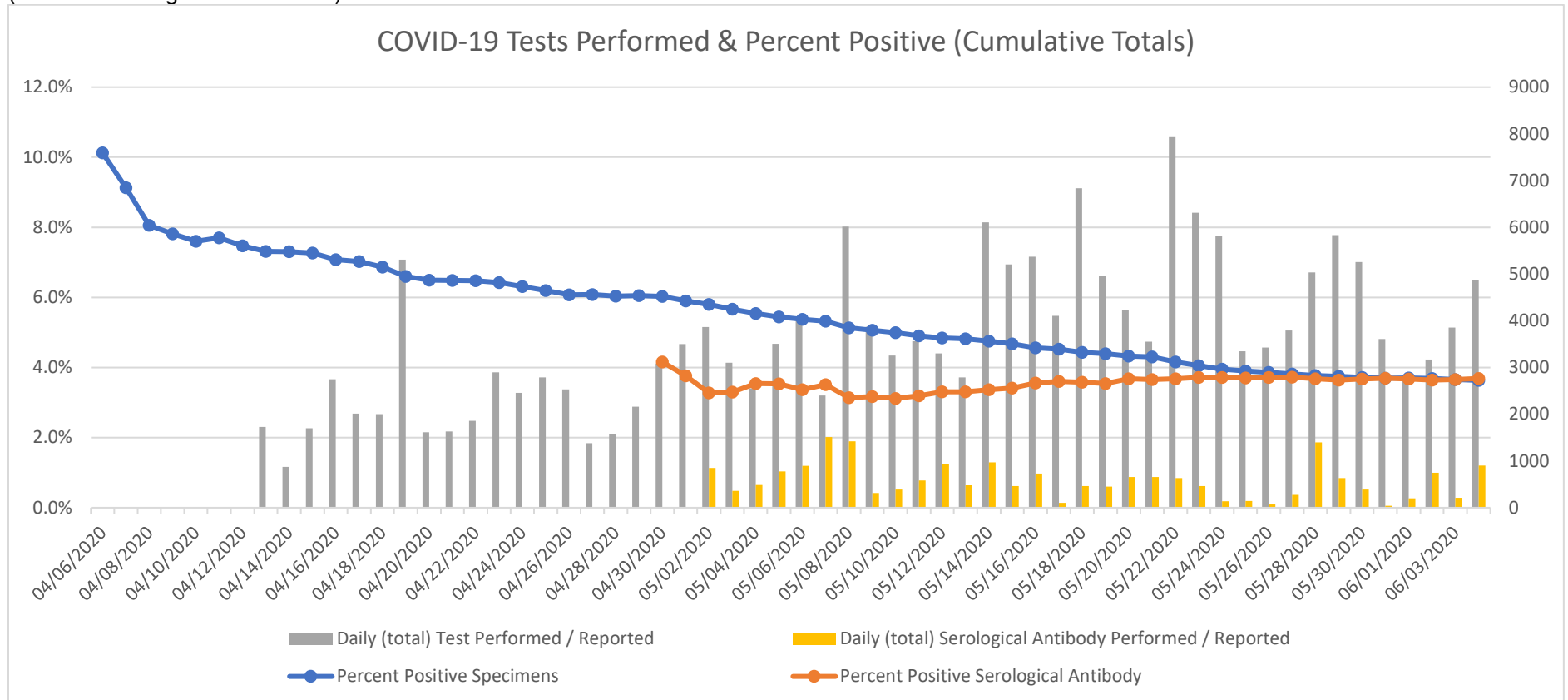
DISEASE TESTING

	May 29 – June 4	Total Number
Specimens tested ¹ , count	29,345	218,010
Specimens positive, count (%)	807 (2.8%)	7,921 (3.6%)
Antibody tested, count	3,124	23,402
Antibody positive, count (%)	117 (3.7%)	863 (3.7%)

1. Includes state and private laboratories.

Note: Specimen counts may not reflect unique individuals.

Downward trajectory of positive tests as a percent of total tests within a 14-day period (flat or increasing volume of tests)



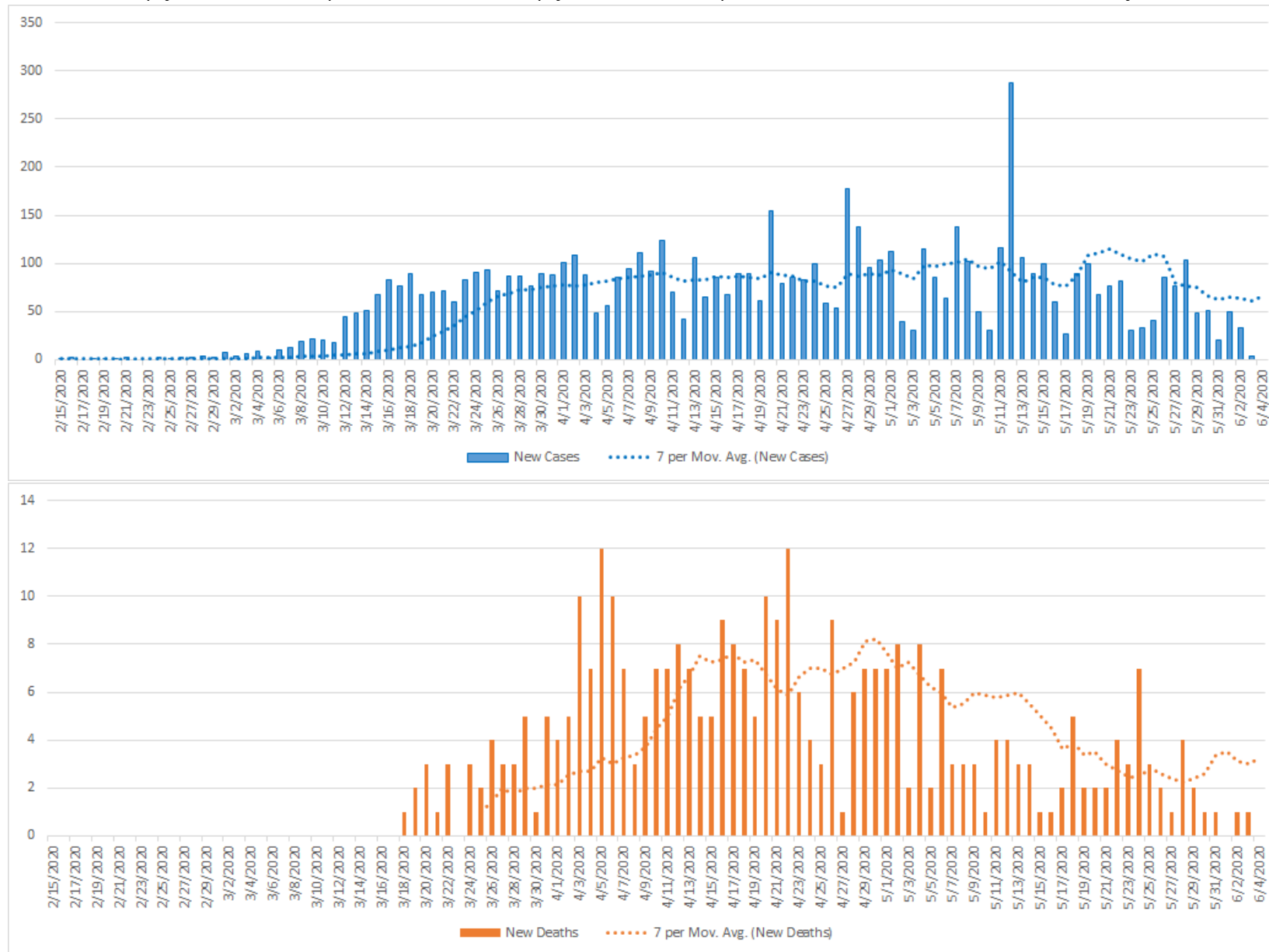
Oklahoma, May 29 – June 4, 2020

EPIDEMIOLOGICAL ESTIMATES

	Estimate	Notes / Interpretation
Cases		
Cumulative incidence	175.2 (per 100,000 persons)	From March 7 to June 4, there were about 175 (per 100,000) new cases of COVID-19 in Oklahoma.
Absolute change in cumulative incidence from previous week	1.2 (per 100,000 persons)	Compared to May 22 - May 28, there was 1 (per 100,000) more case of COVID-19 reported in Oklahoma during the past week (May 29 - June 4).
Disease Severity		
Case-fatality risk (crude)	5.0%	The estimate is not adjusted for the lag time from reporting to death (i.e., delay between the time someone dies and the time their death is reported). The fatality estimate could be lower due to cases that were undiagnosed or had milder symptoms.
Cumulative Hospitalization rate (overall)	25.7 (per 100,000 persons)	About 26 people per 100,000 have ever been hospitalized for COVID-19 during this outbreak.

CASES AND DEATHS

New cases (by date of onset) and new deaths (by date of death) of COVID-19 in Oklahoma, February–June 2020



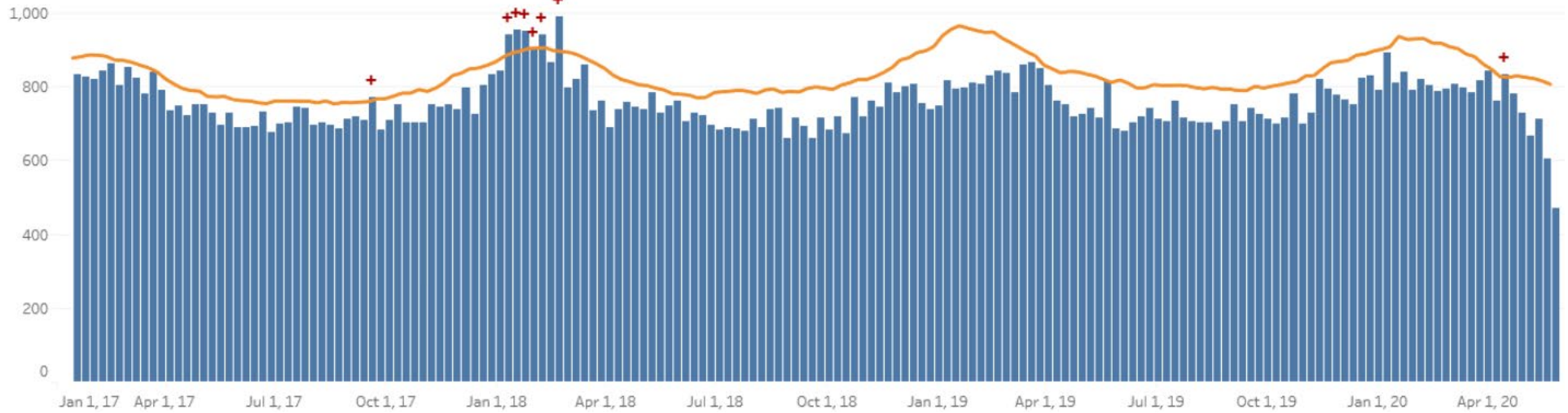
Data as of June 4, 2020.

Please note the different axes for new cases (top—from 0 to 350 for new cases) and new deaths (bottom—from 0 to 14 for new deaths). Additionally a 7 day lag has been applied to the trend line based on information collected to-date for 5/3 and 5/23 where within 7 days of onset date 90% of the cases had been reported.

Oklahoma Excess Death Analysis

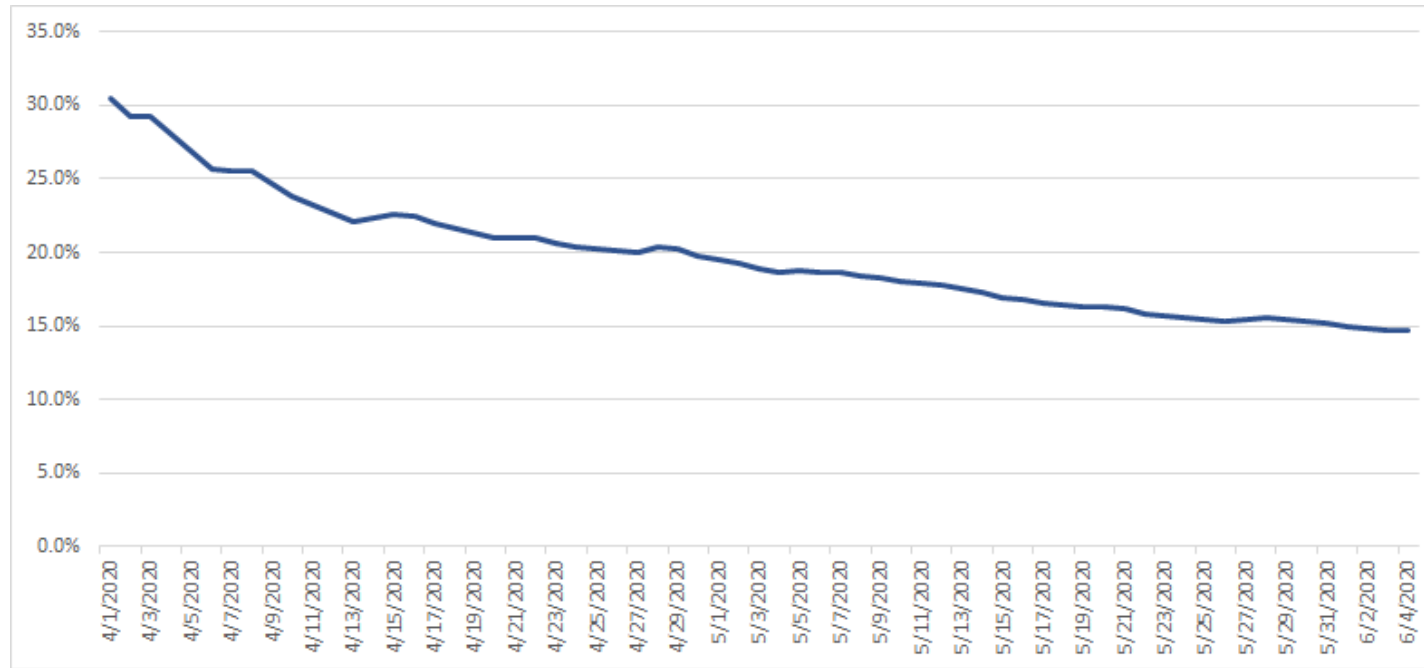
- + indicates observed count above threshold
- Predicted number of deaths from all causes
- threshold for excess deaths

Weekly number of deaths (from all causes)



Source: CDC, National Center for Health Statistics, https://www.cdc.gov/nchs/nvss/vsrr/covid19/excess_deaths.htm#dashboard, June 4 2020 12pm.

Cumulative Percent of Cases Ever Hospitalized (by date of report)



Source: OSDH Acute Disease Registry

TIME TO EVENT*

	N	Median	10 th to 90 th Percentile
Time from Symptom Onset to Test (Specimen Collection) ^{1,2}	3,851	4 days	0-14 days
Time from Symptom Onset to Hospitalization ^{1,3}	742	5 days	0-15 days
Length of Hospitalization Discharged Alive ⁴	668	6 days	2-21 days
Length of Hospitalization Deceased ⁴	221	8 days	2-23 days
Time from Symptom Onset to Death ^{1,5}	215	13 days	4-31 days

*Data as of June 4, 2020.

1. Limited to cases with a known date of symptom onset.
2. Limited to cases with a known date of a test (specimen collection) on or after the date of symptom onset.
3. Limited to cases with a known hospital admission date on or after the date of symptom onset.
4. Limited to cases with a known admission and discharge date from the hospital.
5. Limited to cases who are deceased.

DEMOGRAPHIC INFORMATION as of June 4, 2020

	Cases count (%) ¹	Deaths count (%) ¹	Cumulative Incidence Rate ²	Cumulative Mortality Rate ²
Oklahoma	6,907	344	175.2	8.7
Gender				
Male	3,241 (46.9)	177 (51.5)	165.9	9.1
Female	3,666 (53.1)	167 (48.5)	184.2	8.4
Age group				
Under 1- 4	98 (1.4)	0 (0.0)	37.6	
5-14	137 (2.0)	0 (0.0)	25.5	
15-24	764 (11.1)	1 (0.3)	142.1	0.2
25-34	1,119 (16.2)	2 (0.6)	206.0	0.4
35-44	1,100 (15.9)	4 (1.2)	224.3	0.8
45-54	961 (13.9)	13 (3.8)	208.8	2.8
55-64	1,047 (15.2)	47 (13.7)	212.2	9.5
65-74	759 (11.0)	91 (26.5)	211.6	25.4
75-84	515 (7.5)	88 (25.6)	274.4	46.9
85+	403 (5.8)	98 (28.5)	550.6	133.9
Unknown	4 (0.1)	0 (0.0)		
Race				
American Indian or Alaska Native	443 (6.4)	24 (7.0)	144.2	7.8
Asian or Pacific Islander	193 (2.8)	2 (0.6)	217.9	2.3
Black or African American	647 (9.4)	27 (7.8)	224.9	9.4
Multiracial/Other	288 (4.2)	8 (2.3)	69.6	1.9
White	4,510 (69.6)	265 (77.0)	158.5	9.3
Unknown	826 (12.0)	18 (5.2)		
Ethnicity				
Hispanic or Latino	1,404 (20.3)	11 (3.2)	327.2	2.6
Not Hispanic or Latino	4,568 (66.1)	284 (87.5)	130.0	8.6
Unknown	935 (13.5)	31 (9.3)		

1. Percentages may not add up to 100 due to rounding.

2. Rate per 100,000 population

HEALTHCARE & NON-HEALTHCARE

Status ¹	Non-Healthcare Worker count (%)*	Healthcare Worker count (%)*
Active	711 (12.1)	71 (7.0)
Deceased	339 (5.8)	5 (0.5)
Recovered	4,843 (82.2)	938 (92.5)
Total	5,893	1,014

* Percentages may not add up to 100 due to rounding.

1. Data as of June 4, 2020

CASES & DEATHS BY LONG-TERM CARE AND CORRECTIONAL FACILITIES

	Cases	Deaths
LTCF^{1,2}		
Residents	915	181
Staff	552	3
Total	1,458	184
Correctional Facilities^{2,3}		
Inmates	325	2
Staff	57	0
Total	382	2

1. Long term care facility or nursing home

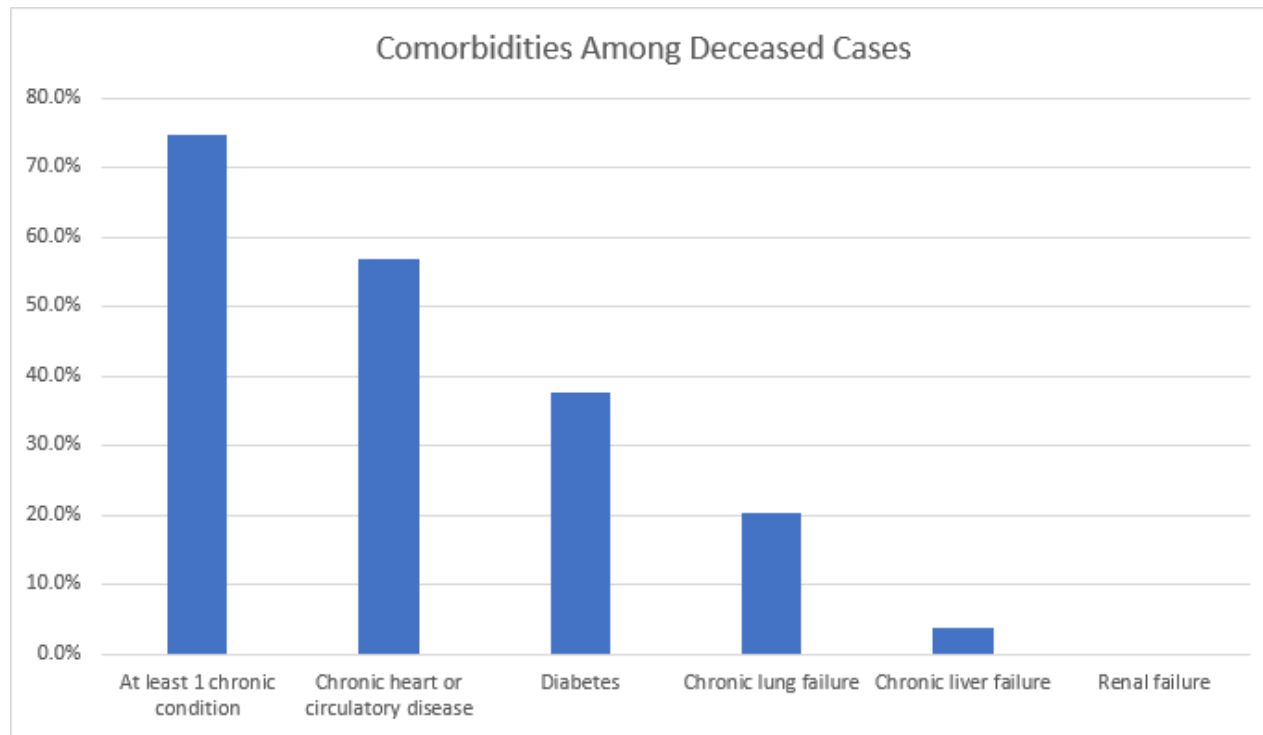
2. Data as of June 4, 2020.

3. Correctional facilities include prisons, jails, and juvenile detention centers.

COMORBIDITIES AMONG DECEASED CASES

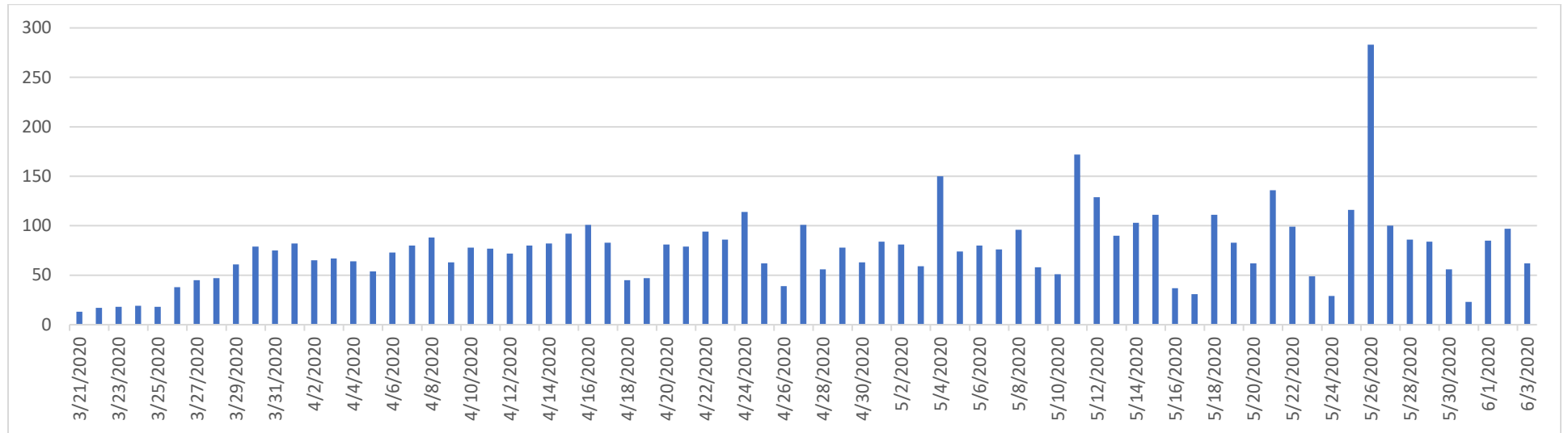
Comorbidities	Number (%)
At least 1 chronic condition*	257 (74.7)
Chronic heart or circulatory disease	196 (57.0)
Diabetes	130 (37.8)
Chronic lung failure	70 (20.4)
Chronic liver failure	13 (3.8)
Renal failure	0 (0)

*Chronic conditions include; chronic heart or circulatory disease, diabetes, chronic lung failure, chronic liver failure and renal failure



RECOVERED CASES

Distribution of recovered cases of COVID-19, March-June 2020, Oklahoma

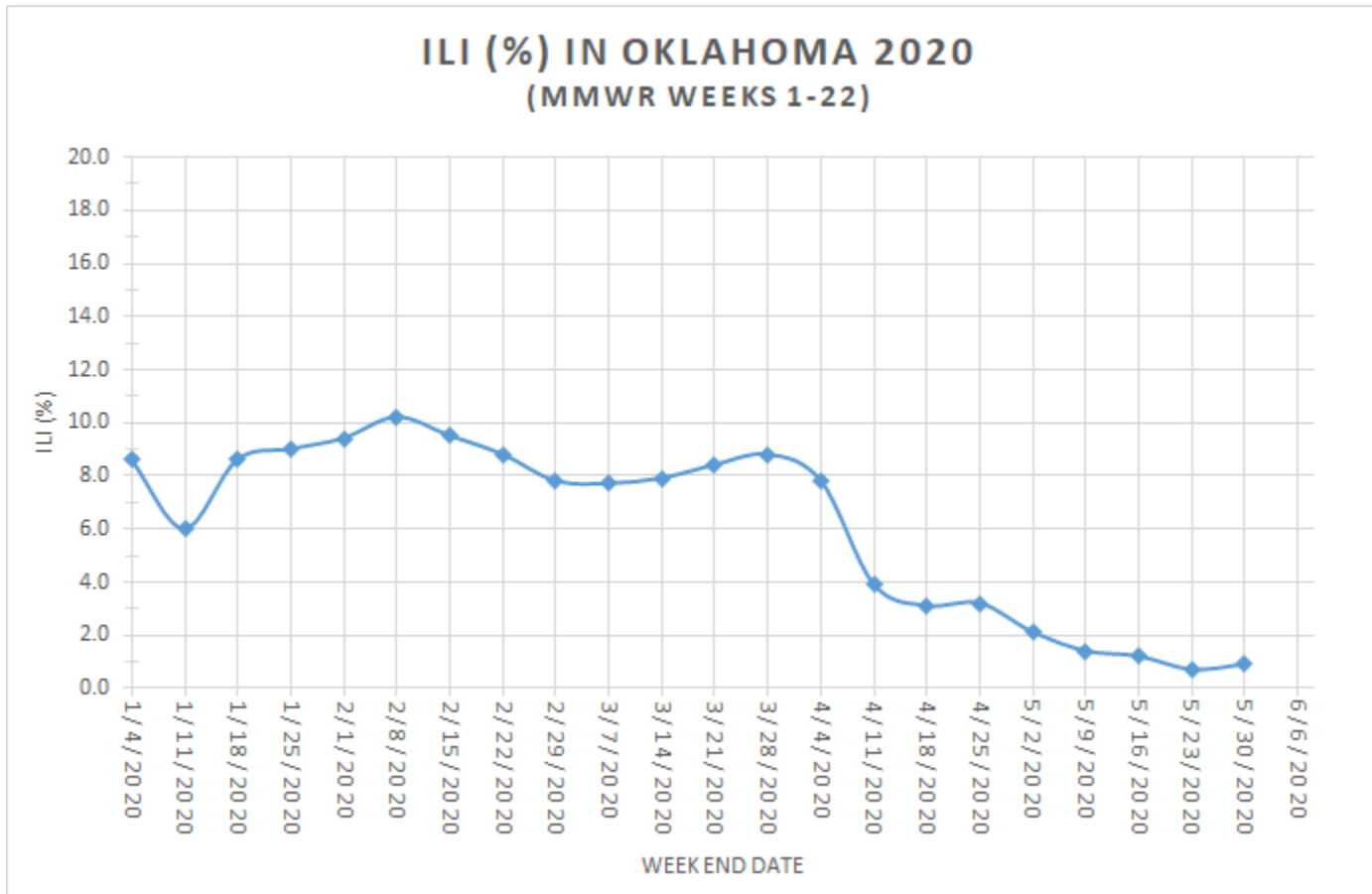


Note: A recovered case is an individual currently not hospitalized or deceased AND 14 days after the onset of symptoms

Symptoms Criteria

Downward trajectory of influenza-like illnesses (ILI) reported within a 14-day period

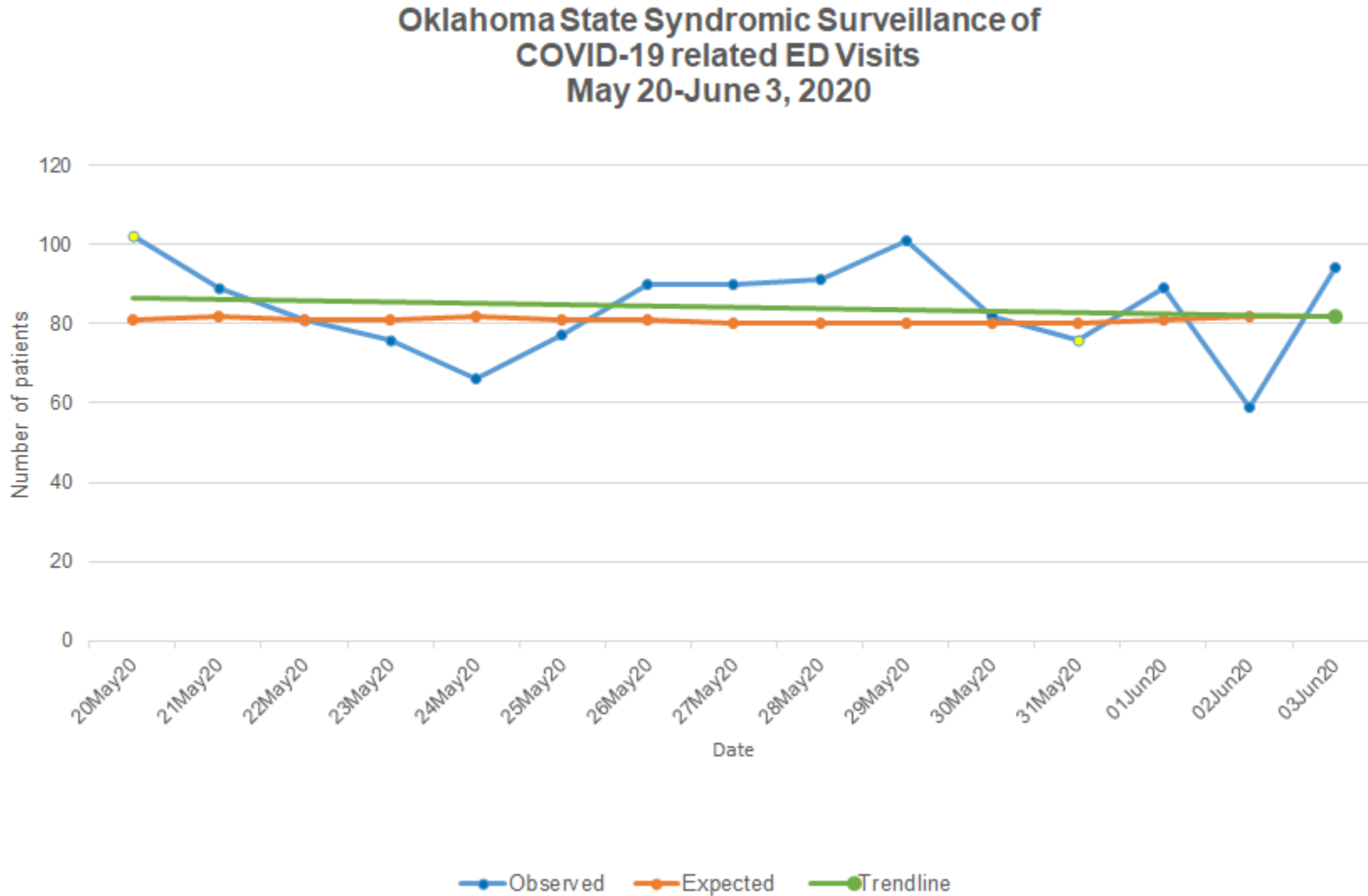
Weekly percentage of **Influenza-Like Illness (ILI)** (%), Morbidity and Mortality Weekly Report, Oklahoma, Jan–May 2020



Interpretation: Data on Influenza-Like Illness shows a slight increase in the daily number and weekly percentage of influenza-like illness cases in the past week.

Slight downward trajectory of covid-like syndromic cases reported within the past 14-day period

COVID-19 Related Emergency Department Visits, Oklahoma State Syndromic Surveillance, May 20-June 3, 2020

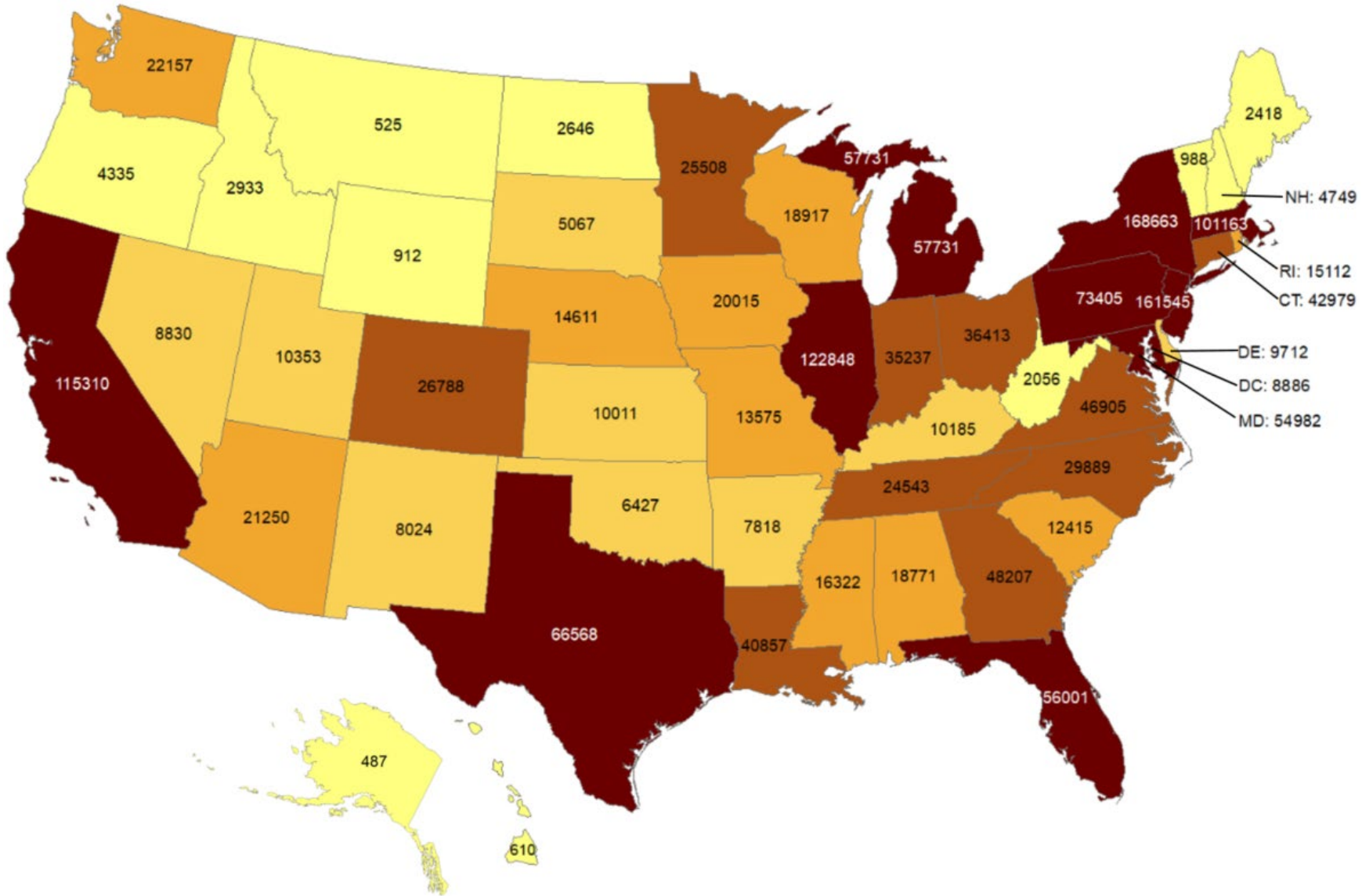


Interpretation: Data from syndromic surveillance shows a slight decrease in the number of COVID-19 related emergency department visits in the past 2 weeks.

OKLAHOMA IN COMPARISON

Total number of reported COVID-19 cases

Oklahoma ranks **39** (out of all States and DC) in the total number of reported COVID-19 cases in the US.

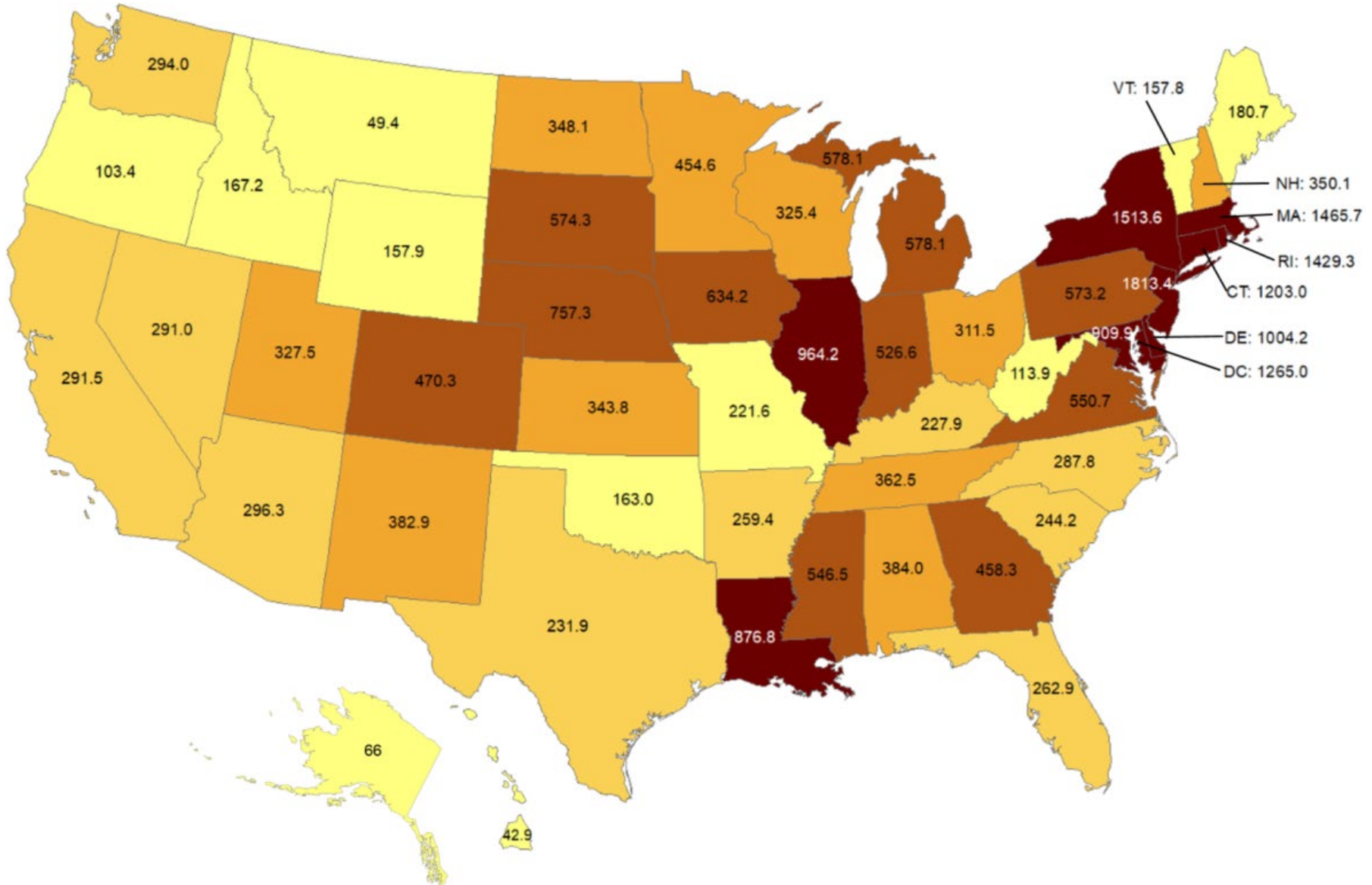


Data from CDC. Available at <https://www.cdc.gov/covid-data-tracker/index.html>

Data as of June 3, 2020

Cumulative incidence of reported COVID-19 cases

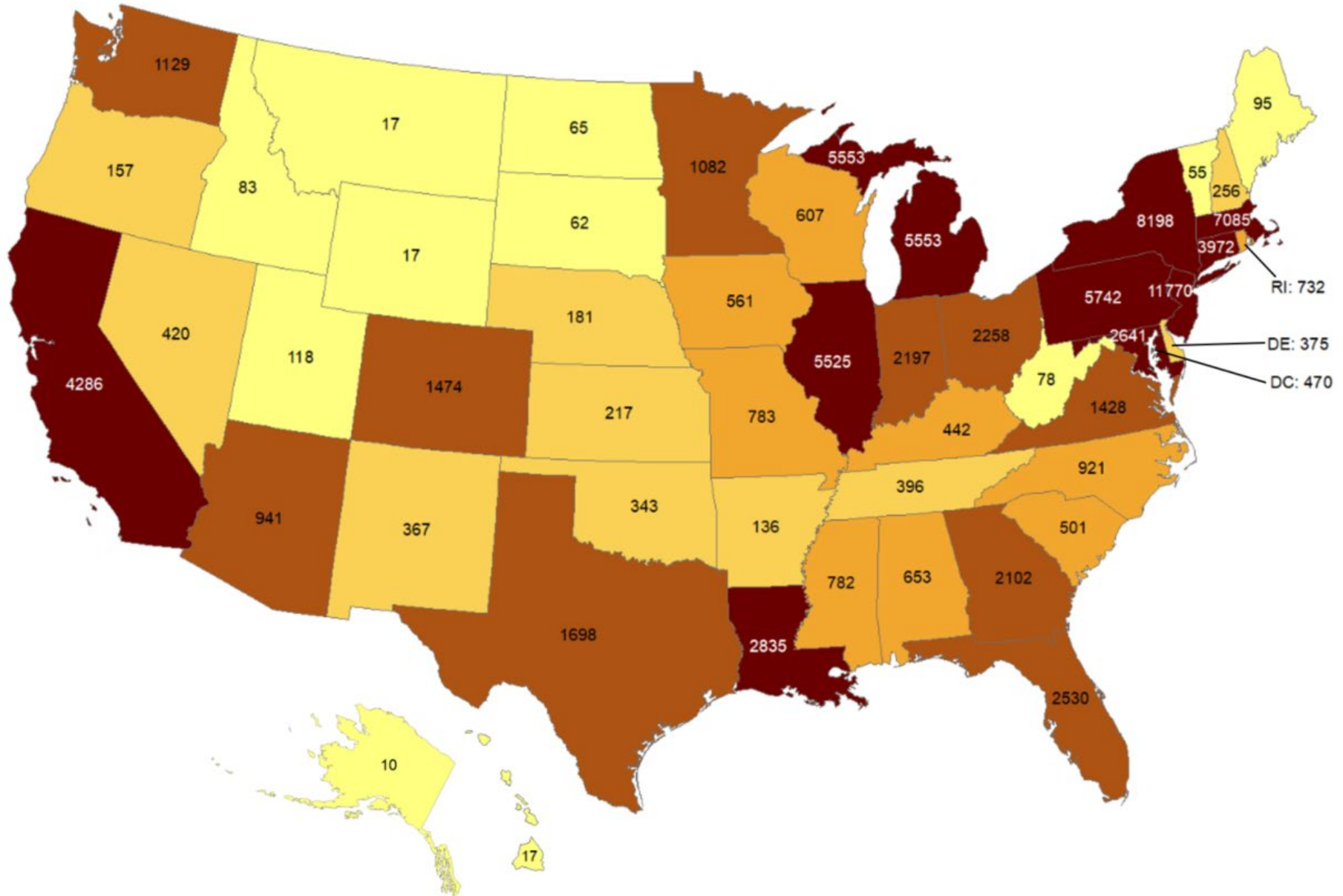
Oklahoma ranks **45** (out of all States and DC) in the cumulative incidence (per 100,000 persons) of reported COVID-19 cases in the US.



Data from CDC. Available at <https://www.cdc.gov/covid-data-tracker/index.html>
Data as of June 3, 2020

Total number of reported COVID-19 deaths

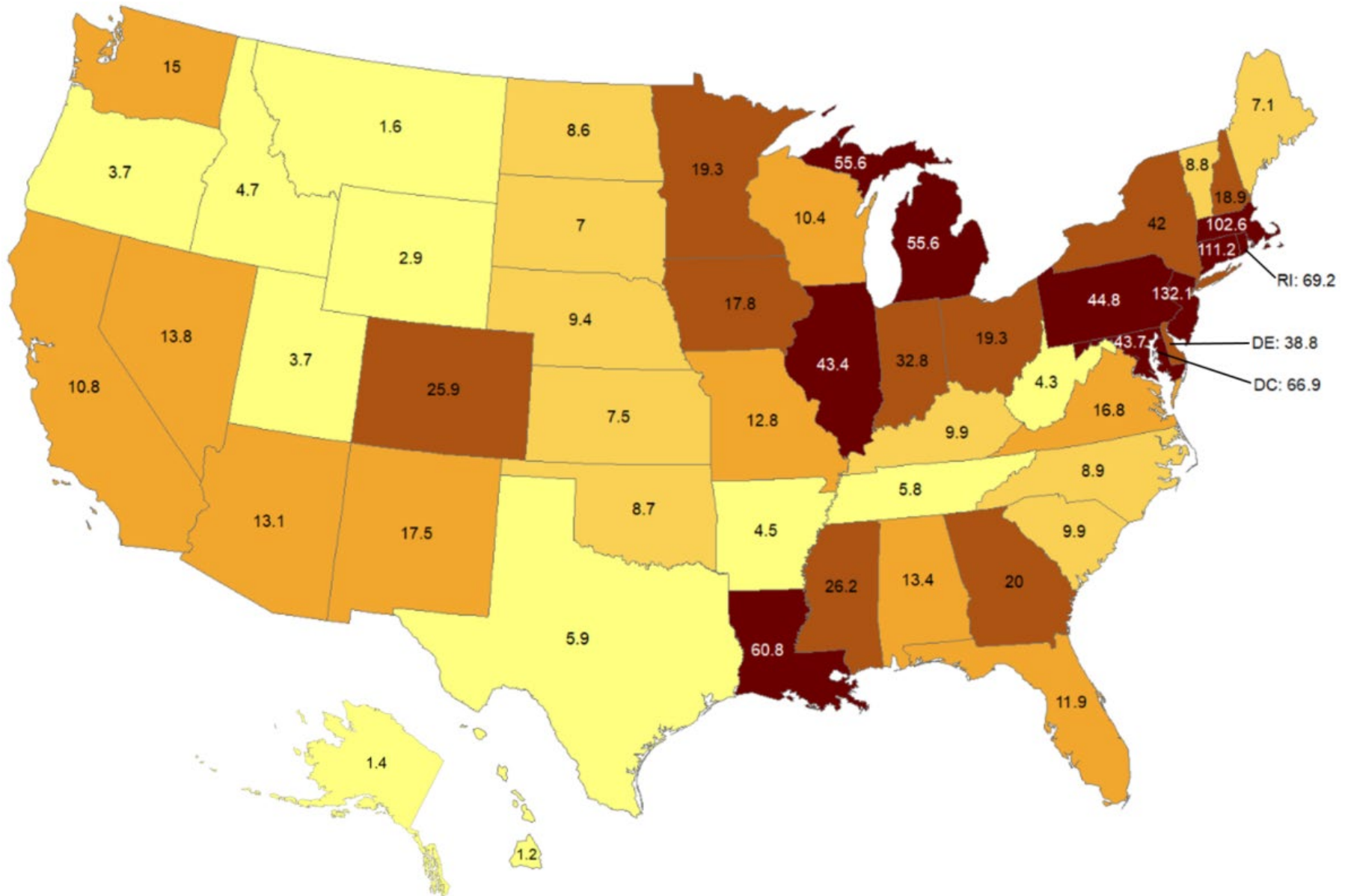
Oklahoma ranks **35** (out of all States and DC) in the total number of reported COVID-19 deaths in the US.



Data from CDC. Available at <https://www.cdc.gov/covid-data-tracker/index.html>
Data as of June 3, 2020

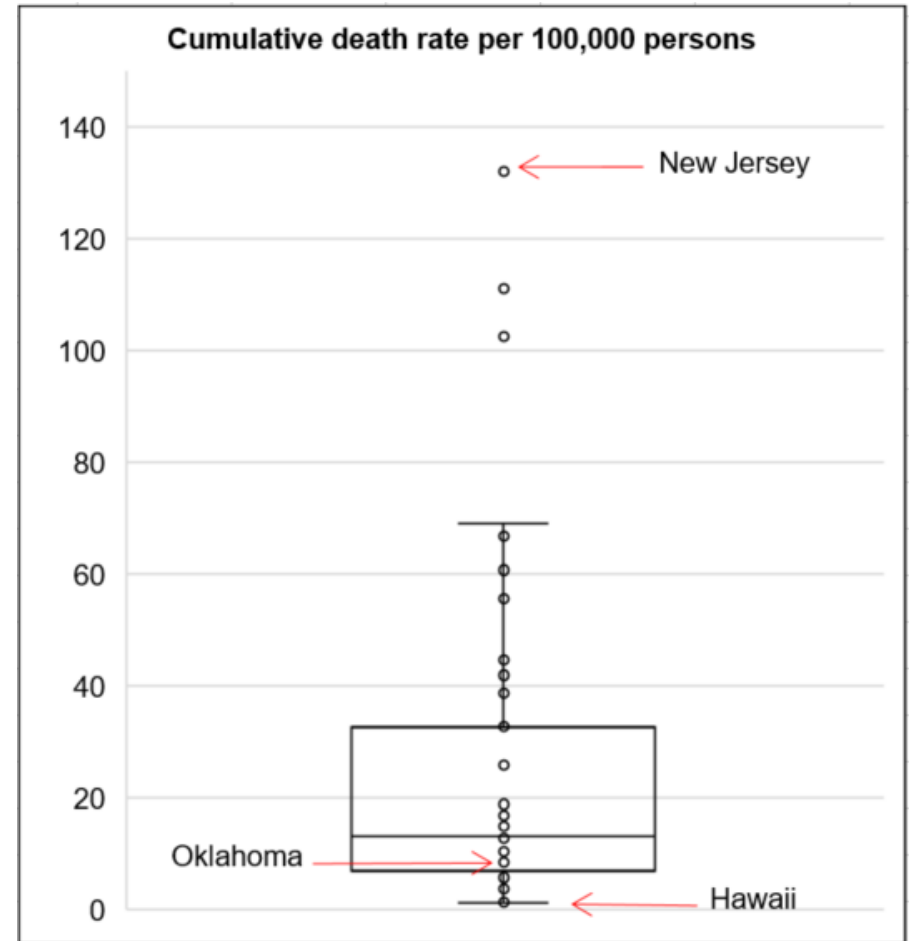
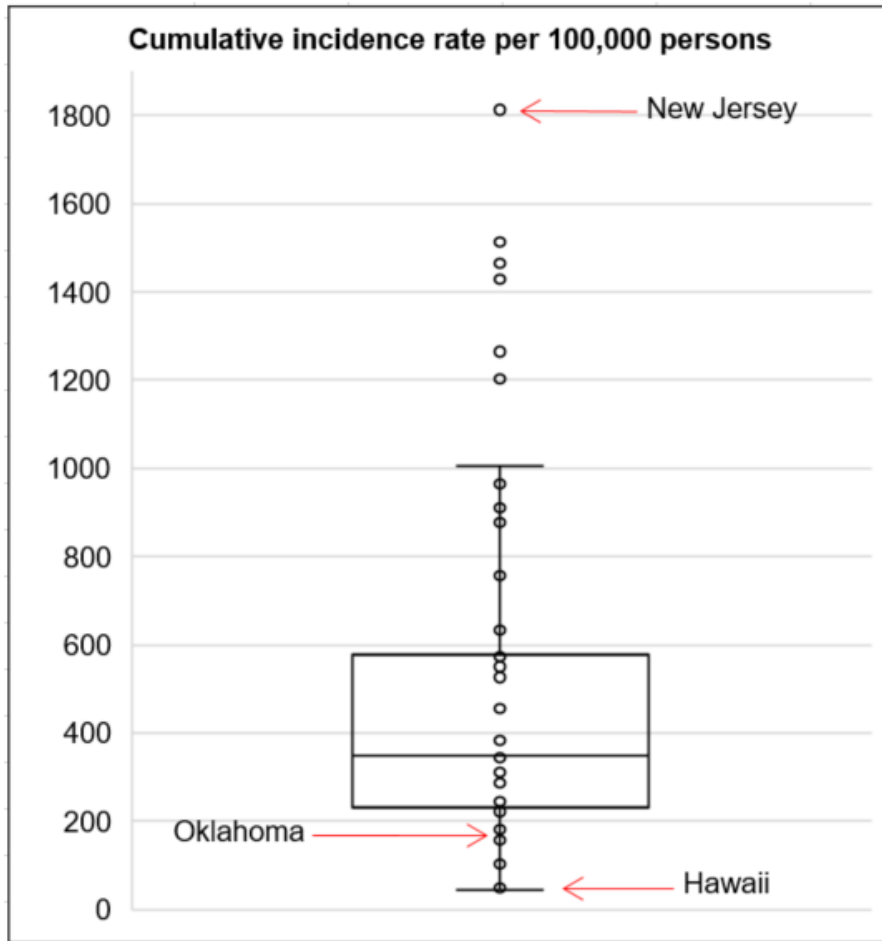
Cumulative death rate of reported COVID-19 cases

Oklahoma ranks **36** (out of all States and DC) in the cumulative death percent of reported COVID-19 cases in the US.



Data from CDC. Available at <https://www.cdc.gov/covid-data-tracker/index.html>
Data as of June 3, 2020

Cumulative incidence and cumulative death rate of reported COVID-19 cases



Interpretation: Oklahoma has cumulative incidence and cumulative death rate below the median of the US.

ACKNOWLEDGEMENT

The weekly report is made by possible through the efforts of county and city public health and healthcare professionals.

NOTES

Every effort is made to ensure accuracy and the data is up-to-date for the time period reported.
For daily updates on COVID-19, please visit <https://coronavirus.health.ok.gov/>