

OKLAHOMA COVID-19 WEEKLY REPORT

Weekly Epidemiology and Surveillance Report
July 17 – July 23, 2020



PURPOSE To provide up-to-date weekly epidemiological data on COVID-19 in Oklahoma.

SNAPSHOT

	July 17– July 23	Change ¹	Total
Confirmed cases	4,528	-8.4%	27,969
Recovered cases ²	4,346	8.8%	22,441
Deaths	39	39.3%	477

1. Change from the week of July 10-July 16, 2020.

2. Currently not hospitalized or deceased and 14 days after onset/report.

Cases		Deaths	
Persons aged 50 and over	Females	Persons aged 50 and over	Males
32%	52%	95%	52%
of <u>cases</u>	of <u>cases</u>	of <u>deaths</u>	of <u>deaths</u>

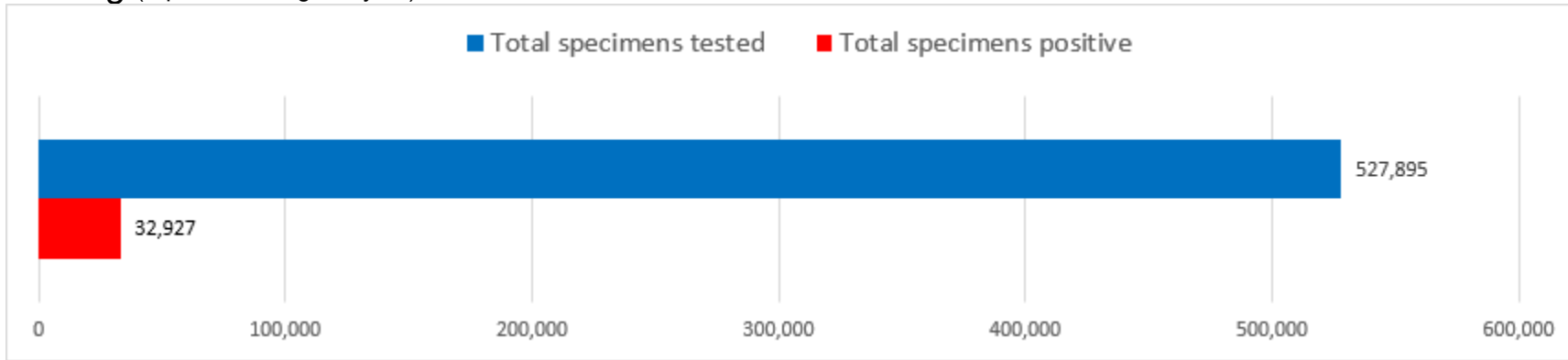
The average age of cases was **40** years.

The youngest case was **less than a year old** and the oldest case was **100+ years**.

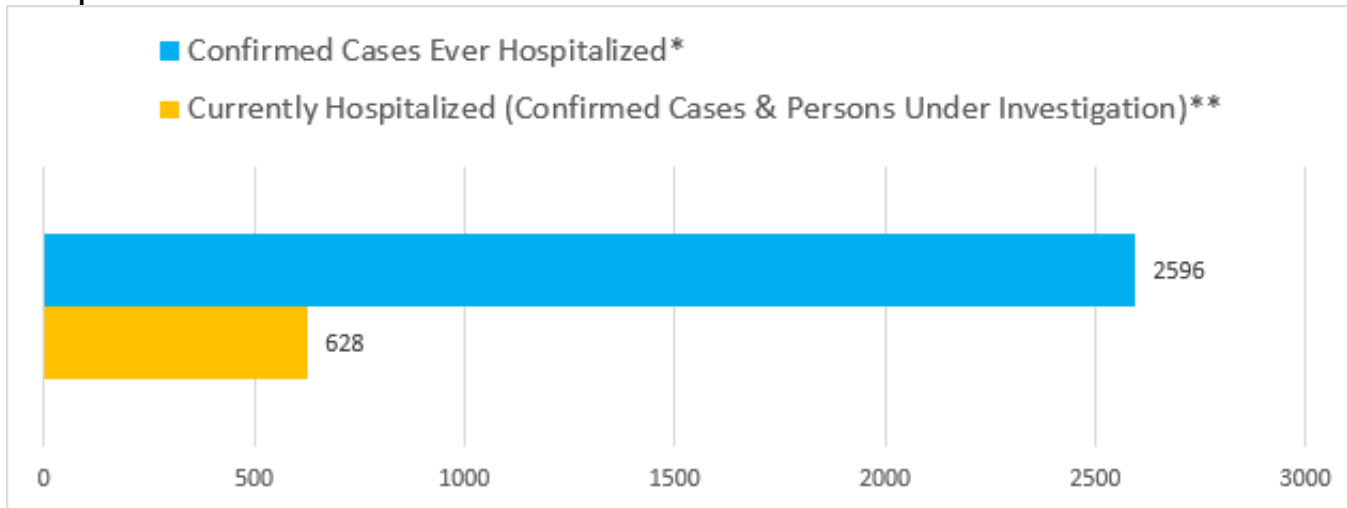
The average age of individuals who died was **75 years**.

The youngest individual to die from COVID-19 was **13 years** and the oldest was **100+ years**.

Testing (reported through July 23)



Hospitalizations



*Ever hospitalized includes discharged, deceased, currently hospitalized and recovered as of 7/23/2020.

**Source OSDH Beds Survey. Note, facility response rate of 88% on 7/23/2020.

KEY POINTS

- **4,528** confirmed cases in the past week
8.4% decrease from the week before (July 10-July 16).
 - **39** deaths occurred in the past week
39.3% increase from the week before (July 10-July 16).
 - **2,596 (9.3%)** confirmed cases have been hospitalized
 - **378** confirmed cases were reported to OSDH as hospitalized in the past week 16.3% increase from the week before (July 10-July 16)
 - **527,895** specimens have been tested in total
 - **77** counties (out of 77) have had at least one confirmed case of COVID-19
-

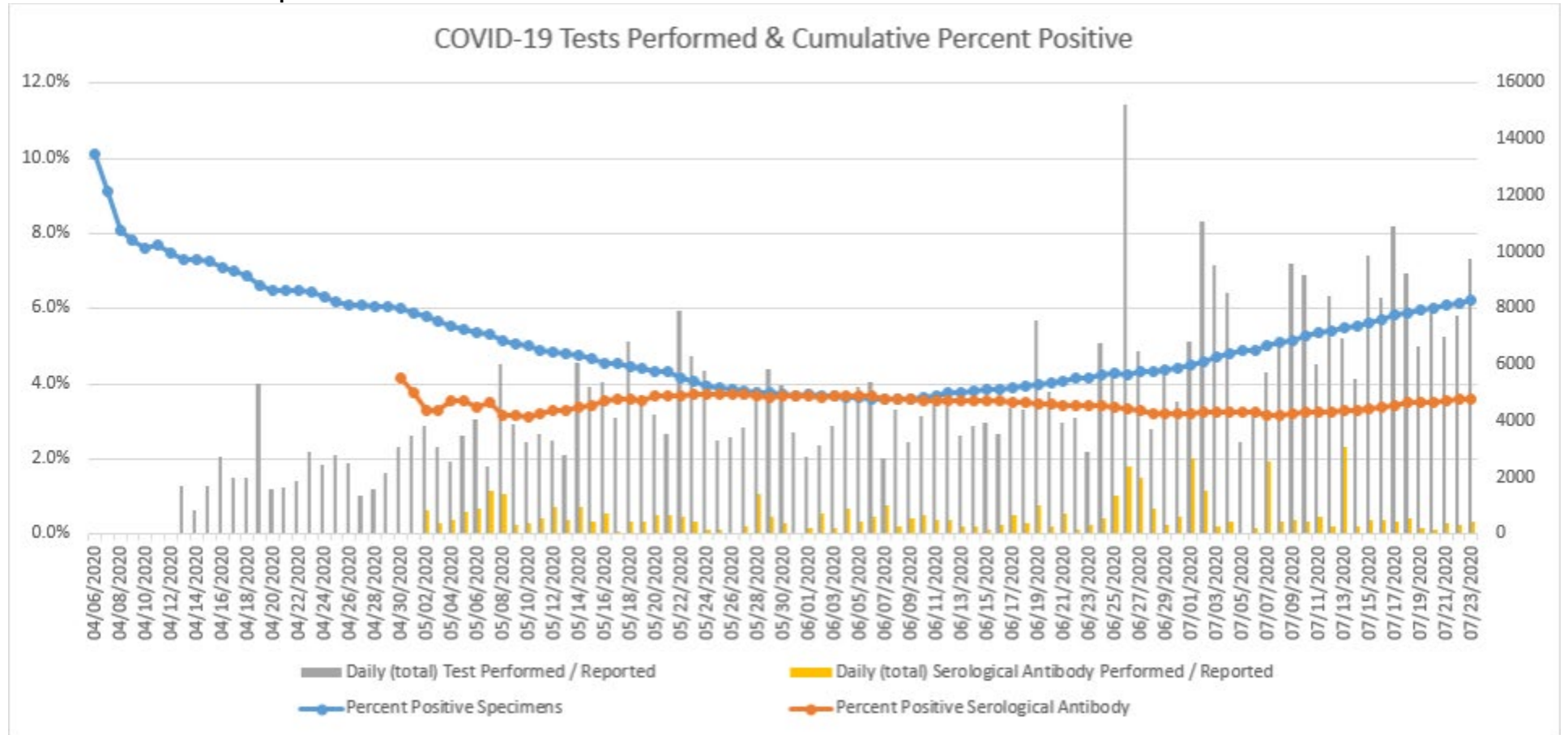
DISEASE TESTING

	July 17 – July 23	Total Number
Specimens tested ¹ , count	59,251	527,895
Specimens positive, count (%)	6,142 (10.4%)	32,927 (6.2%)
Antibody tested, count	2,498	57,683
Antibody positive, count (%)	217 (8.9%)	2,071 (3.6%)

1. Includes state and private laboratories.

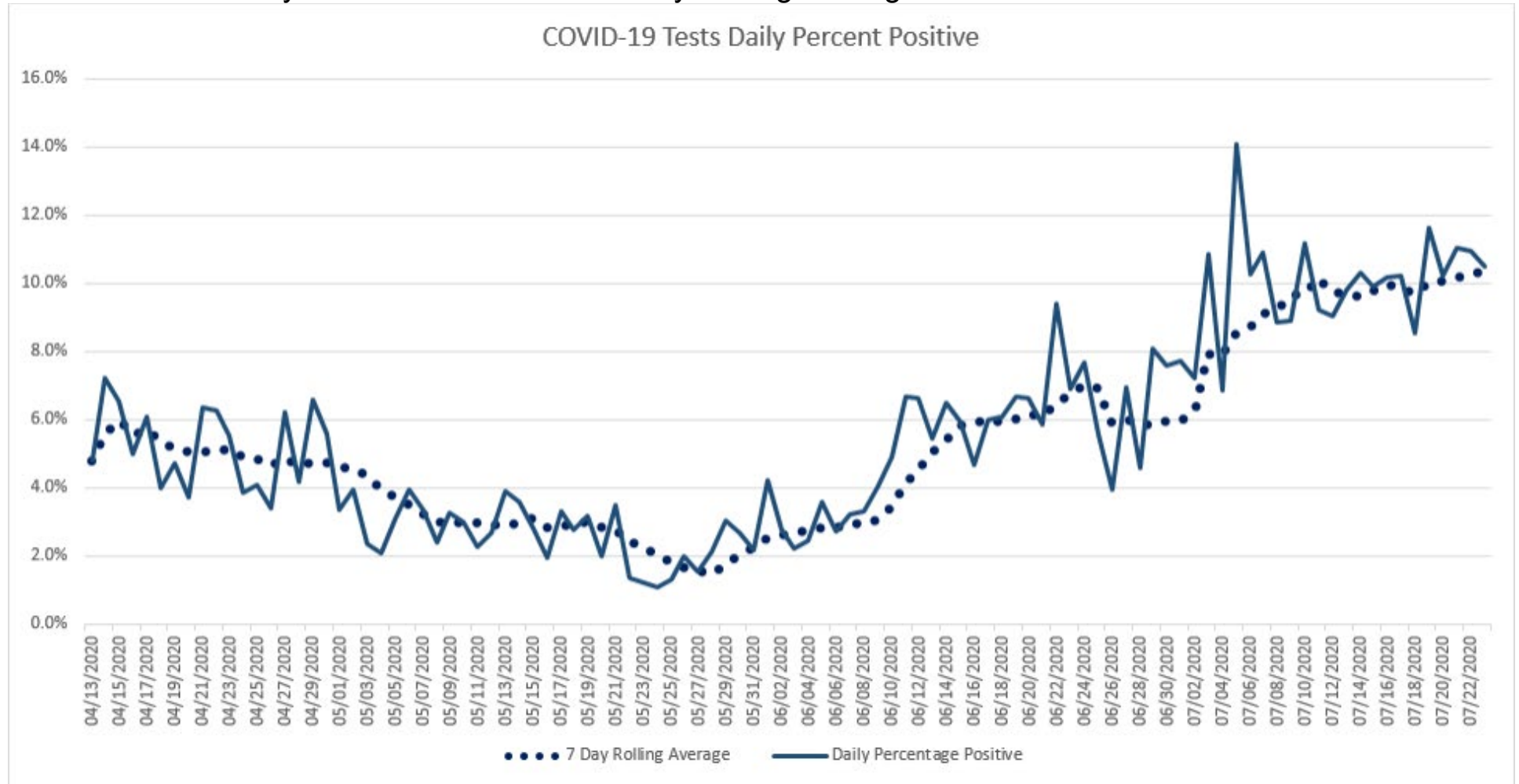
Note: Specimen counts may not reflect unique individuals.

Positive tests as a percent of total tests



Oklahoma, July 23, 2020

Covid-19 Tests Daily Percent Positive with 7 Day Rolling Average



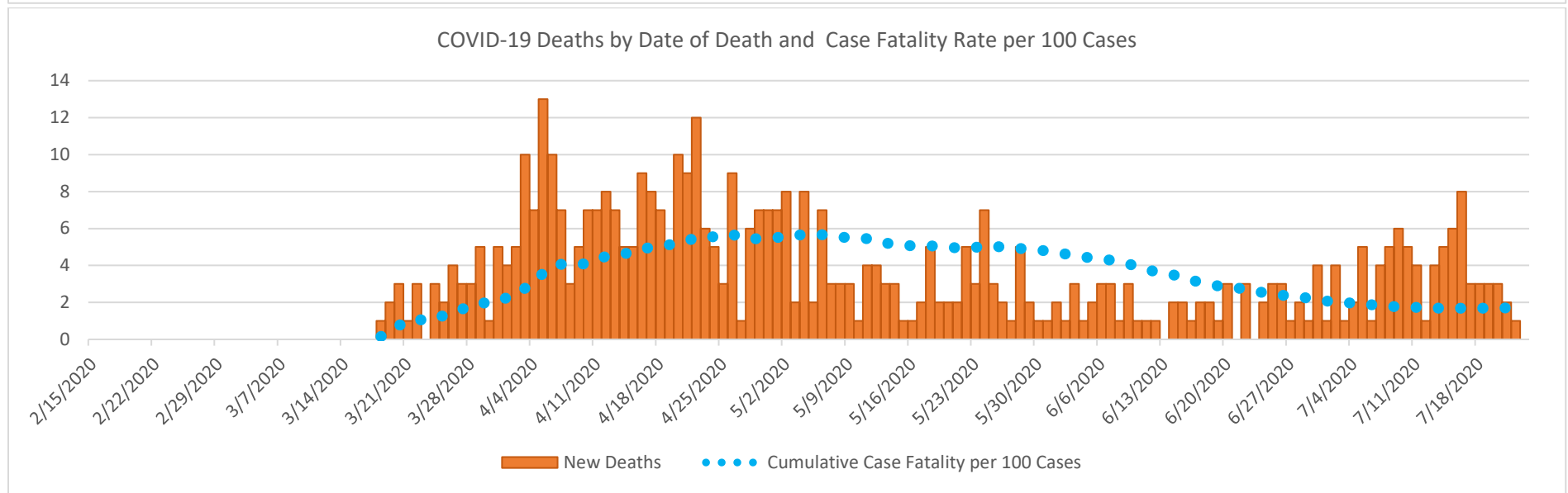
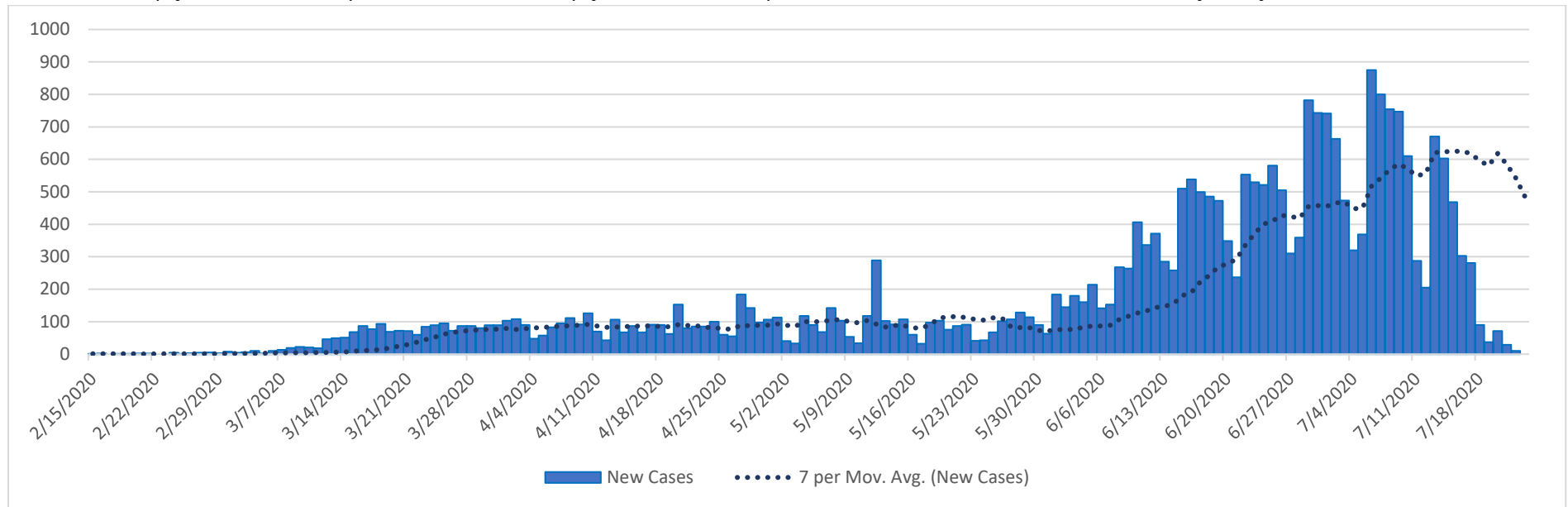
Oklahoma, July 23, 2020

EPIDEMIOLOGICAL ESTIMATES

	Estimate	Notes / Interpretation
Cases		
Cumulative incidence*	709.3 (per 100,000 persons)	From March 7 to July 23, there were about 730 (per 100,000) new cases of COVID-19 in Oklahoma.
Absolute change in cumulative incidence from previous week	-10.6 (per 100,000 persons)	Compared to July 10 - July 16, there was 10 (per 100,000) fewer cases of COVID-19 reported in Oklahoma during the past week (July 17 - July 23).
Disease Severity		
Case-fatality risk (crude)	1.7%	The estimate is not adjusted for the lag time from reporting to death (i.e., delay between the time someone dies and the time their death is reported). The fatality estimate could be lower due to cases that were undiagnosed or had milder symptoms.
Cumulative Hospitalization rate (overall)	65.8 (per 100,000 persons)	About 65 people per 100,000 have ever been hospitalized for COVID-19 during this outbreak.

CASES AND DEATHS

New cases (by date of onset) and new deaths (by date of death) of COVID-19 in Oklahoma, February–July 2020



Data as of July 23, 2020.

Please note the different axes for new cases (top—from 0 to 1,000 for new cases) and new deaths (bottom—from 0 to 14 for new deaths). Additionally, a 7 day lag has been applied to the trend line based on information collected to-date for 7/5 and 7/11 where within 7 days of onset date approximately 80% of the cases had been reported.

Oklahoma Excess Death Analysis

- + indicates observed count above threshold
- Predicted number of deaths from all causes
- threshold for excess deaths

Weekly number of deaths (from all causes)

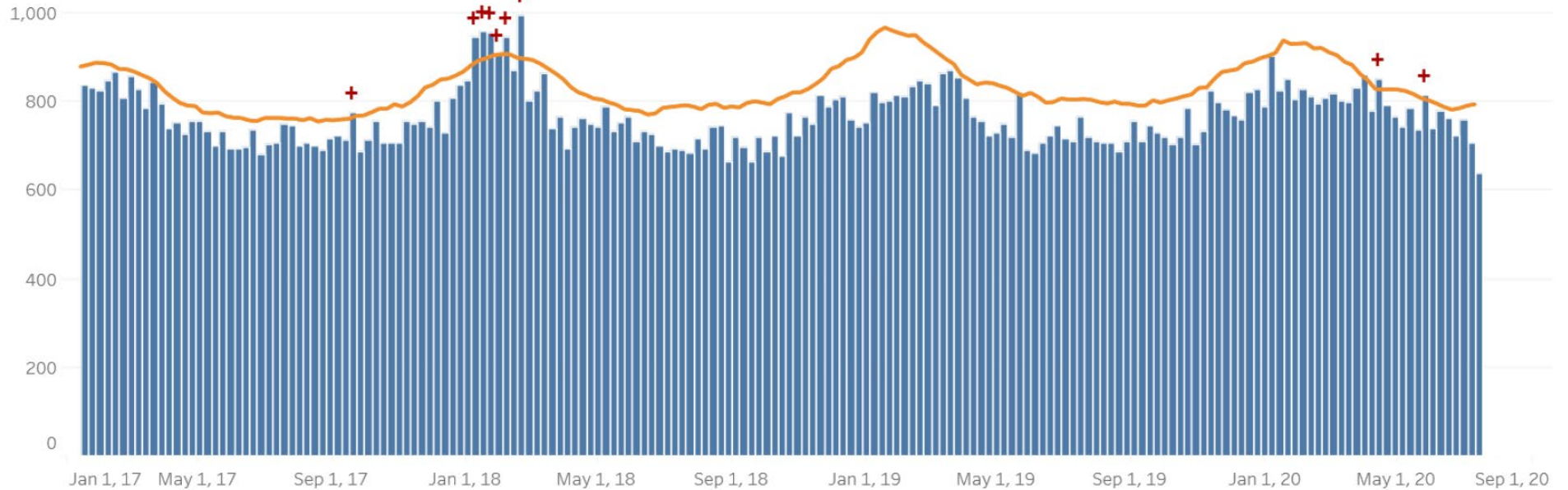
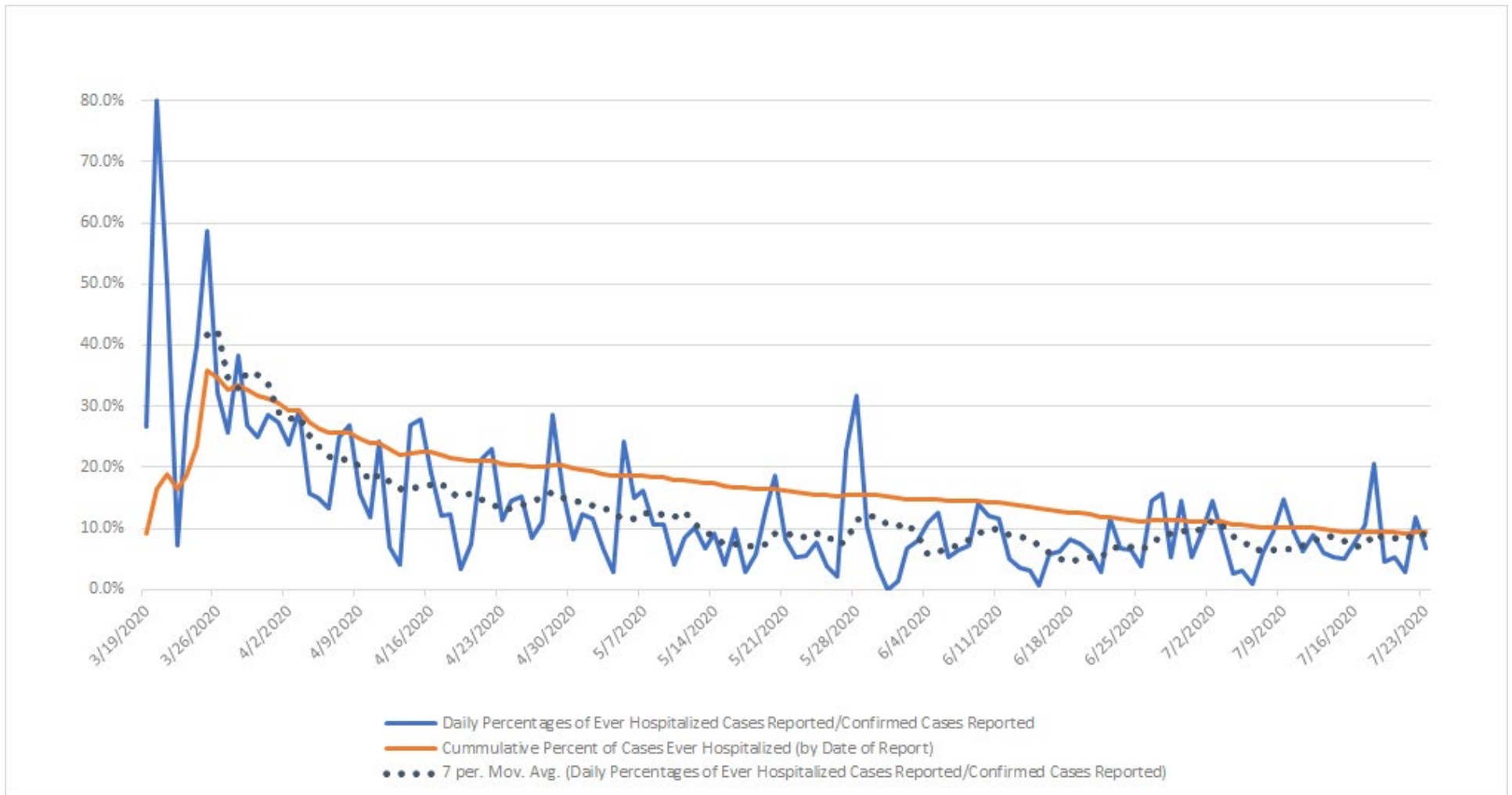


Figure notes: Contains data up to the week-ending date of July 11, 2020. Data in recent weeks are incomplete. Only 60% of the death records are submitted to NCHS within 1-days of the date of death, and completeness varies by jurisdiction.

Source: CDC, National Center for Health Statistics, https://www.cdc.gov/nchs/nvss/vsrr/covid19/excess_deaths.htm#dashboard, July 23, 2020 8am

PERCENT OF CASES EVER HOSPITALIZED (by date of report)



Source: OSDH Acute Disease Registry

TIME TO EVENT*

	N	Median	10th to 90th Percentile
Time from Symptom Onset to Test (Specimen Collection) ^{1,2}	12,926	3 days	0-10 days
Time from Symptom Onset to Hospitalization ^{1,3}	1,629	6 days	0-14 days
Length of Hospitalization Discharged Alive ⁴	1,309	5 days	1-16 days
Length of Hospitalization Deceased ⁴	327	8 days	2-24 days
Time from Symptom Onset to Death ^{1,5}	301	14 days	4-32 days

*Data as of July 23, 2020.

1. Limited to cases with a known date of symptom onset.
 2. Limited to cases with a known date of a test (specimen collection) on or after the date of symptom onset.
 3. Limited to cases with a known hospital admission date on or after the date of symptom onset.
 4. Limited to cases with a known admission and discharge date from the hospital.
 5. Limited to cases who are deceased.
-

DEMOGRAPHIC INFORMATION as of July 23, 2020

		Cases count (%) ¹	Deaths count (%) ¹	Cumulative Incidence Rate ²	Cumulative Mortality Rate ²
Oklahoma		27,969	477	709.3	12.1
Gender					
	Male	13,544 (48.4)	250 (52.4)	693.5	12.8
	Female	14,425 (51.6)	227 (47.6)	724.9	11.4
Age group					
	Under 1- 4	600 (2.1)	0 (0.0)	230.4	0.0
	5-14	1,357 (4.9)	1 (0.2)	252.3	0.2
	15-24	5,136 (18.4)	1 (0.2)	954.9	0.2
	25-34	5,419 (19.4)	5 (1.0)	997.6	0.9
	35-44	4,558 (16.3)	8 (1.7)	929.5	1.6
	45-54	3,800 (13.6)	21 (4.4)	825.5	4.6
	55-64	3,136 (11.2)	59 (12.4)	635.5	12.0
	65-74	2,018 (7.2)	124 (26.0)	562.7	34.6
	75-84	1,223 (4.4)	120 (25.2)	651.5	63.9
	85+	698 (2.5)	138 (28.9)	953.6	188.5
	Unknown	24 (0.1)	0 (0.0)		
Race					
	American Indian or Alaska Native	2,175 (7.8)	42 (8.8)	708.0	13.7
	Asian or Pacific Islander	1,576 (5.6)	11 (2.3)	1,779.7	12.4
	Black or African American	2,048 (7.3)	30 (6.3)	711.9	10.4
	Multiracial/Other	1,130 (4.0)	12 (2.5)	273.1	2.9
	White	15,709 (56.2)	357 (74.8)	552.0	12.5
	Unknown	5,331 (19.1)	25 (5.2)		
Ethnicity					
	Hispanic or Latino	5,936 (21.2)	22 (4.6)	1,383.4	5.1
	Not Hispanic or Latino	16,408 (58.7)	409 (85.7)	466.9	11.6
	Unknown	5,625 (20.1)	46 (9.6)		

1. Percentages may not add up to 100 due to rounding.

2. Rate per 100,000 population

HEALTHCARE & NON-HEALTHCARE

Status ¹	Non-Healthcare Worker count (%)*	Healthcare Worker count (%)*
Active	4,928 (18.8)	123 (6.8)
Deceased	470 (1.8)	7 (0.4)
Recovered	20,767 (79.4)	1,674 (92.8)
Total	26,165	1,804

* Percentages may not add up to 100 due to rounding.

1. Data as of July 16, 2020

CASES & DEATHS BY LONG-TERM CARE AND CORRECTIONAL FACILITIES

	Cases	Deaths
LTCF^{1,2}		
Residents	1,278	231
Staff	753	3
Total	1,889	234
Correctional Facilities^{2,3}		
Inmates	432	2
Staff	99	0
Total	531	2

1. Long term care facility or nursing home

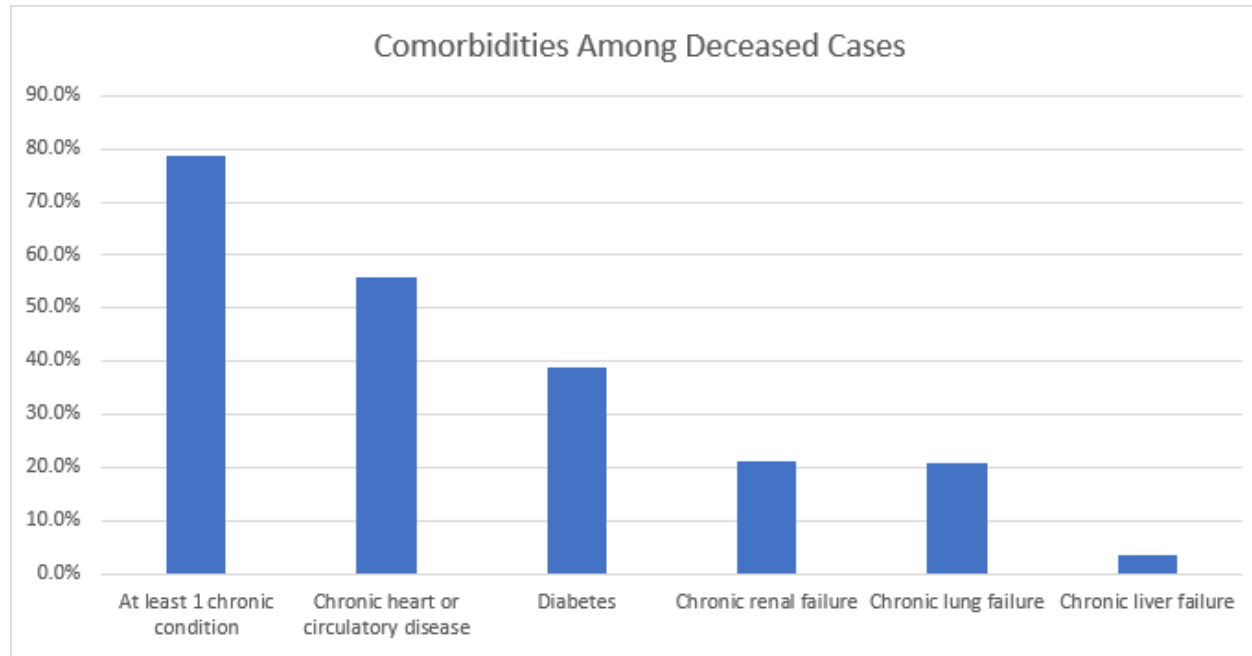
2. Data as of July 23, 2020.

3. Correctional facilities include prisons, jails, and juvenile detention centers.

COMORBIDITIES AMONG DECEASED CASES

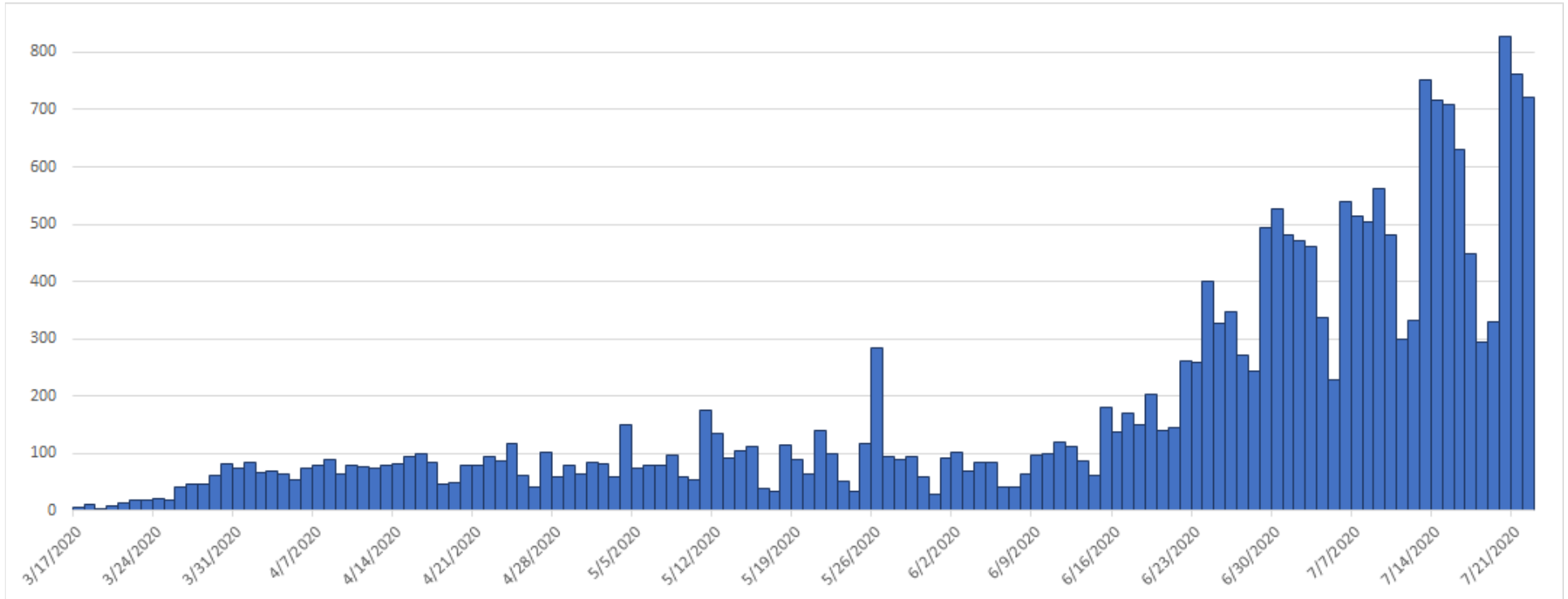
Comorbidities	Number (%)
At least 1 chronic condition*	375 (78.6)
Chronic heart or circulatory disease	267 (56.0)
Diabetes	185 (38.8)
Chronic renal failure	101 (21.2)
Chronic lung failure	99 (20.8)
Chronic liver failure	16 (3.4)

*Chronic conditions include; chronic heart or circulatory disease, diabetes, chronic lung failure, chronic liver failure and renal failure



RECOVERED CASES

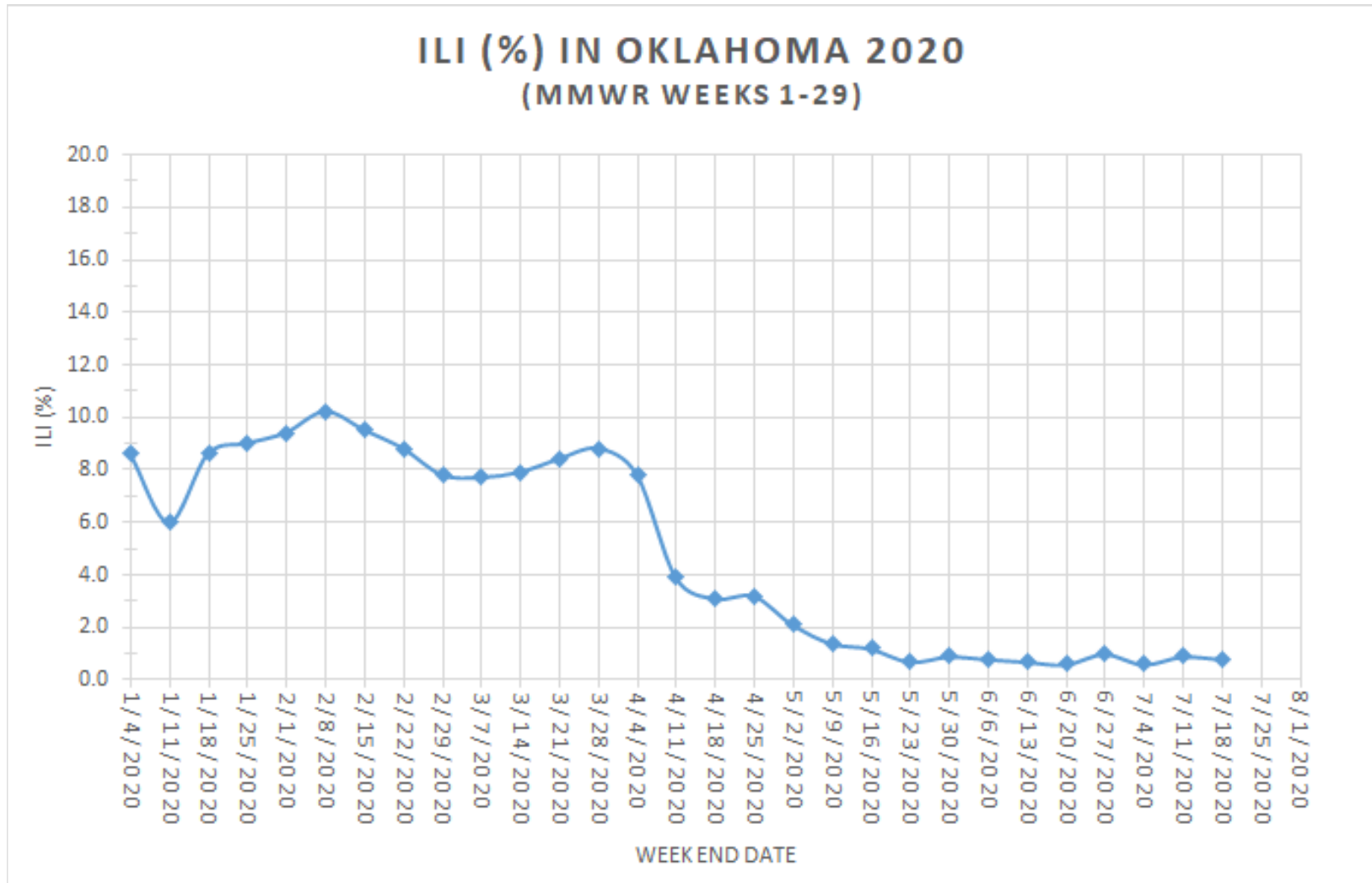
Distribution of **recovered cases of COVID-19**, March-July 2020, Oklahoma



Note: A recovered case is an individual currently not hospitalized or deceased AND 14 days after the onset of symptoms

Symptoms Criteria

Weekly percentage of **Influenza-Like Illness (ILI)** (%), Morbidity and Mortality Weekly Report, Oklahoma, Jan–July 2020

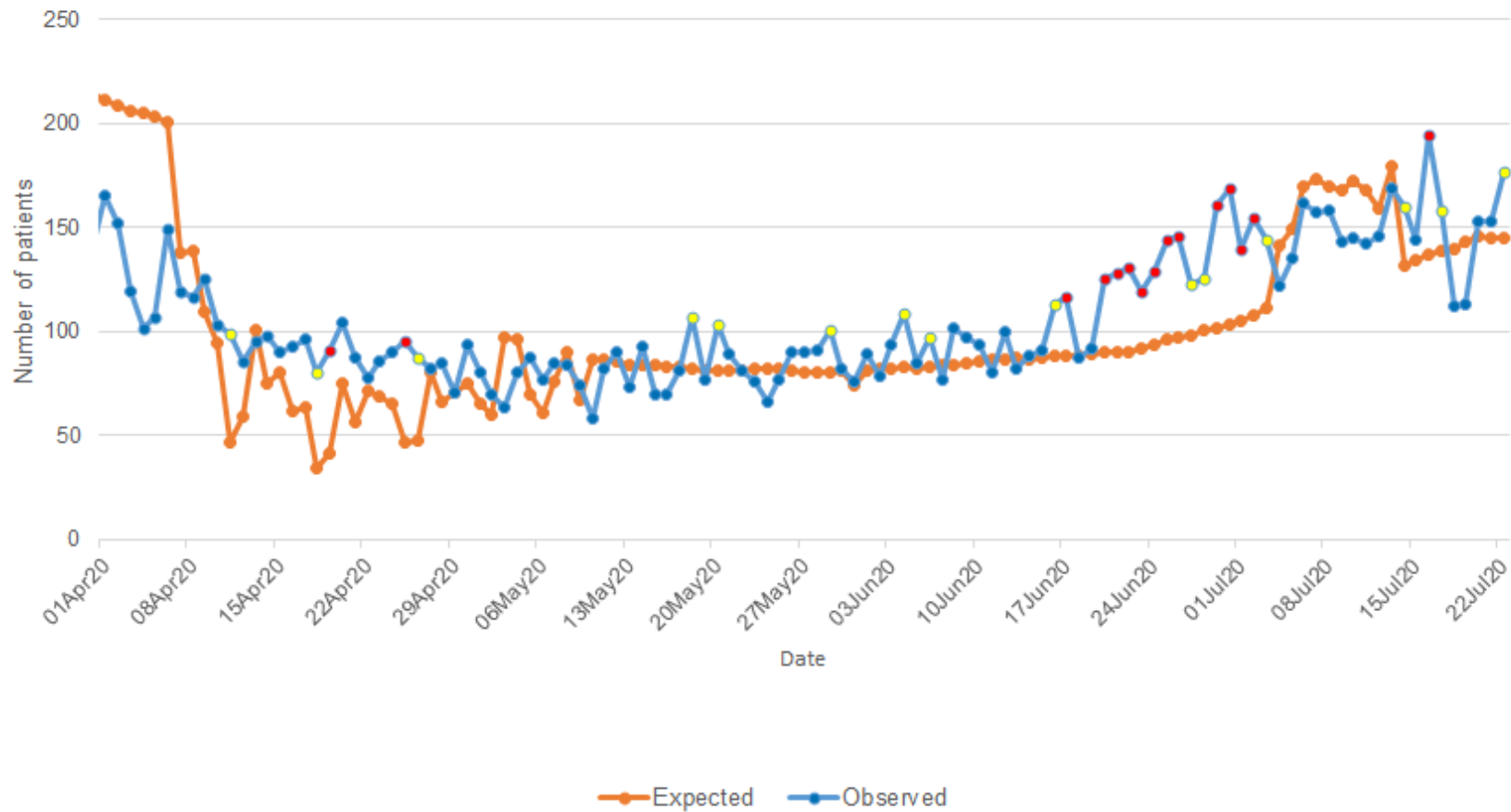


Interpretation: Data on Influenza-Like Illness has decreased slightly in the daily number and weekly percentage of influenza-like illness cases in the past week.

.....

COVID-19 Related Emergency Department Visits

Oklahoma State Syndromic Surveillance of COVID-19 related ED Visits April 1-July 21, 2020

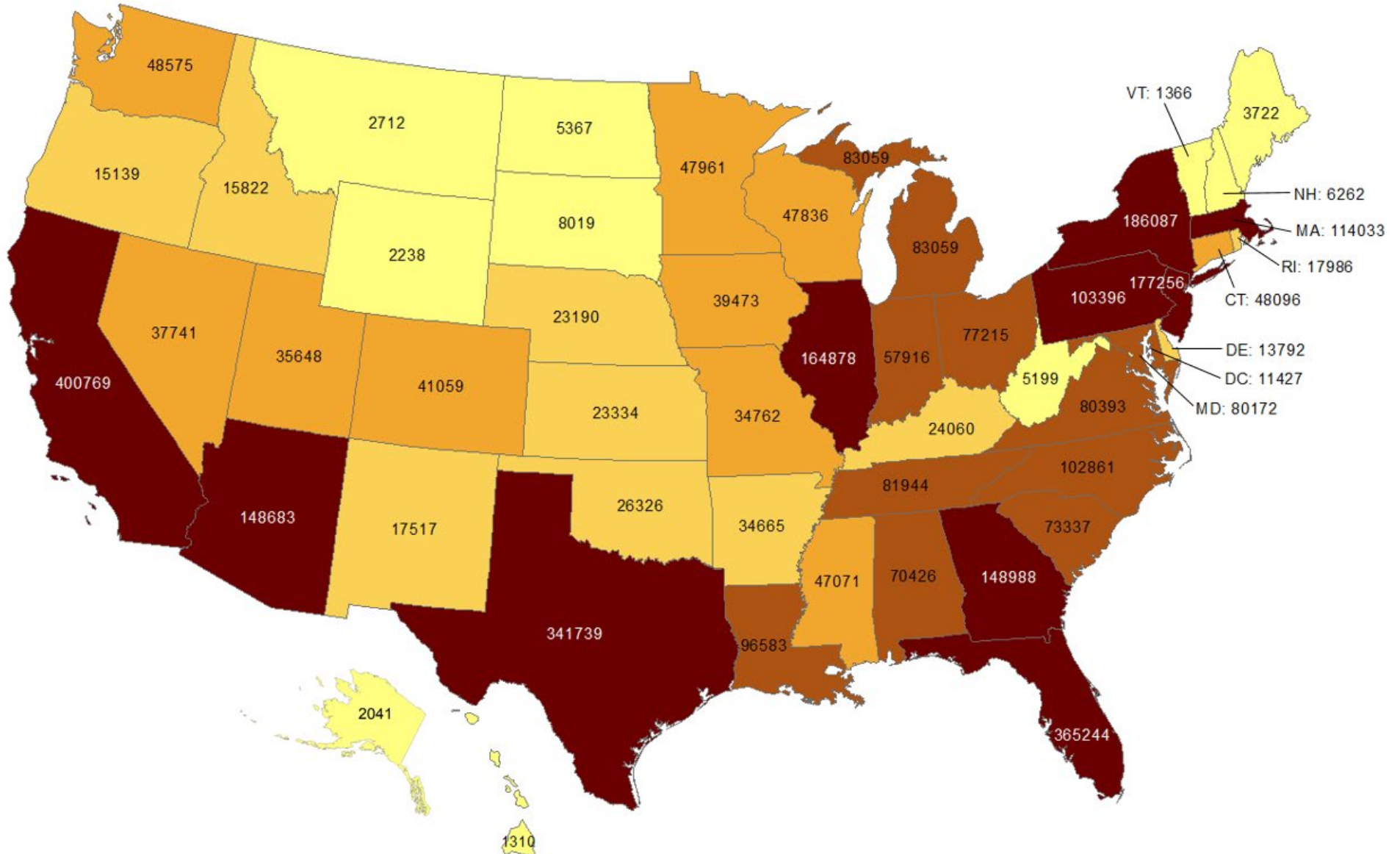


Interpretation: Data from syndromic surveillance shows that the number of COVID-19 related emergency department visits has been in the expected range for in the past 10 days as indicated by the blue dots on the observed line.

OKLAHOMA IN COMPARISON

Total number of reported COVID-19 cases

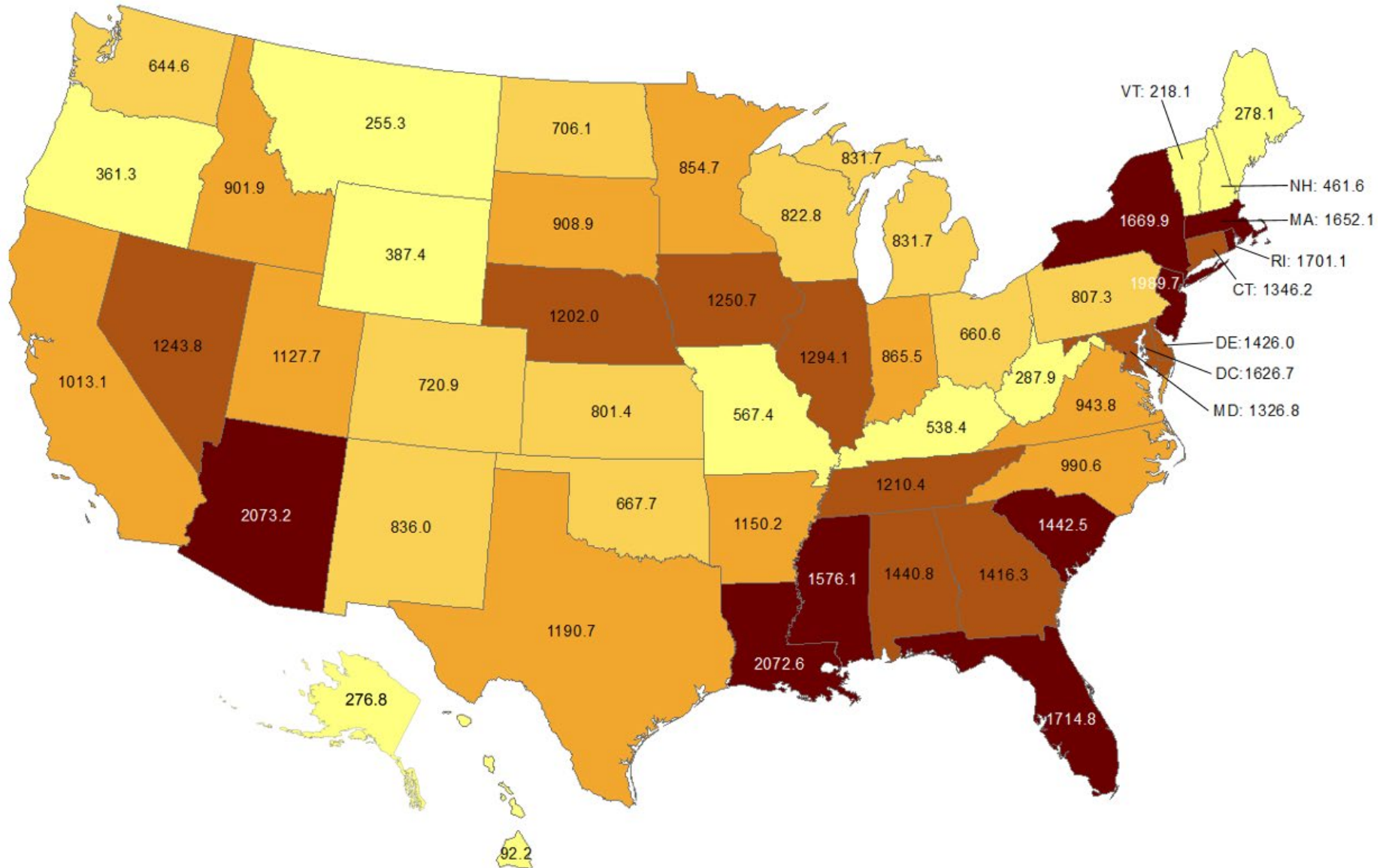
Oklahoma ranks **32** (out of all States and DC) in the total number of reported COVID-19 cases in the US.



Data from CDC. Available at <https://www.cdc.gov/covid-data-tracker/index.html>
Data as of July 22, 2020

Cumulative incidence of reported COVID-19 cases

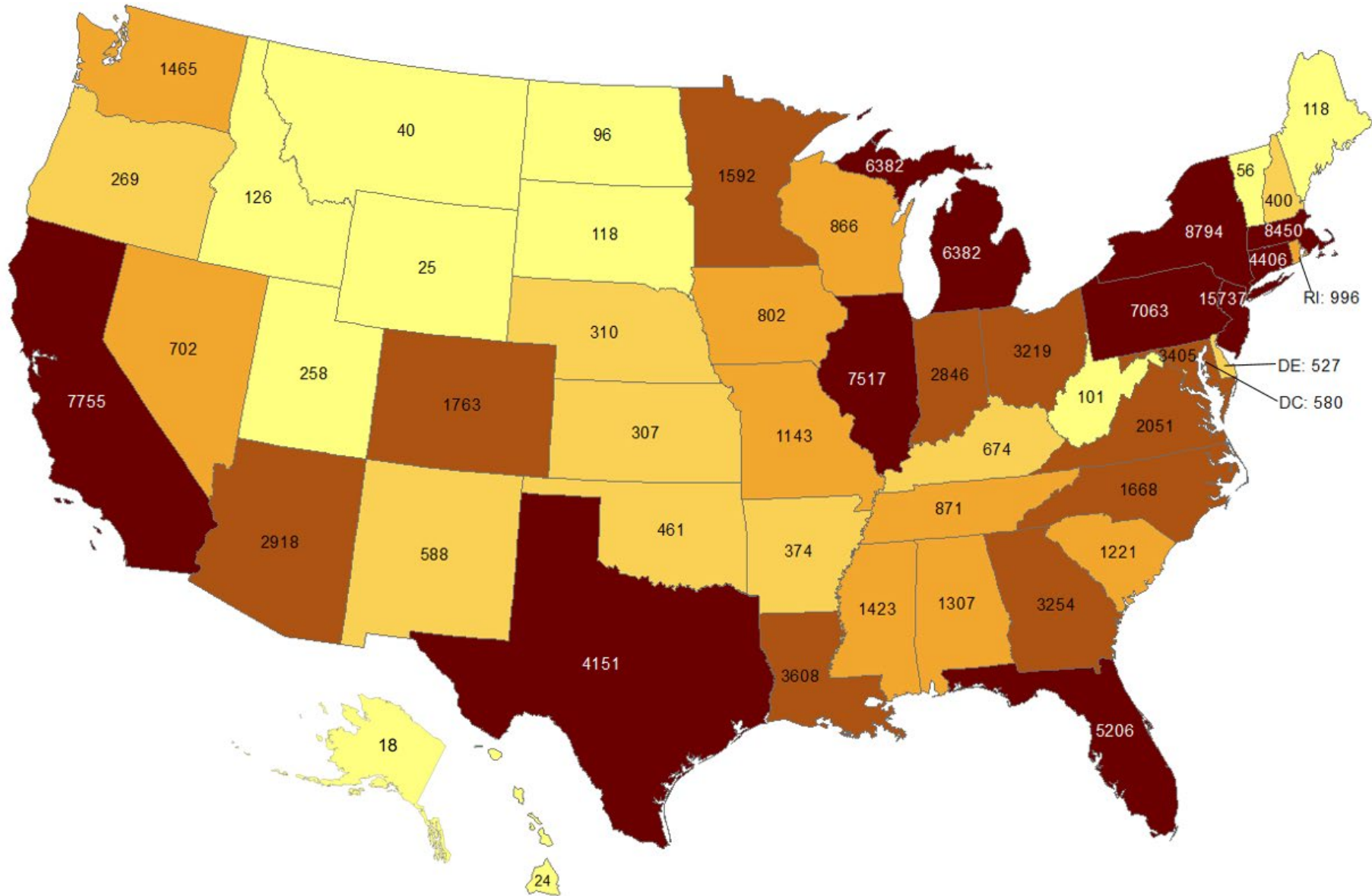
Oklahoma ranks **38** (out of all States and DC) in the cumulative incidence (per 100,000 persons) of reported COVID-19 cases in the US.



Data from CDC. Available at <https://www.cdc.gov/covid-data-tracker/index.html>
Data as of July 22, 2020

Total number of reported COVID-19 deaths

Oklahoma ranks **35** (out of all States and DC) in the total number of reported COVID-19 deaths in the US.



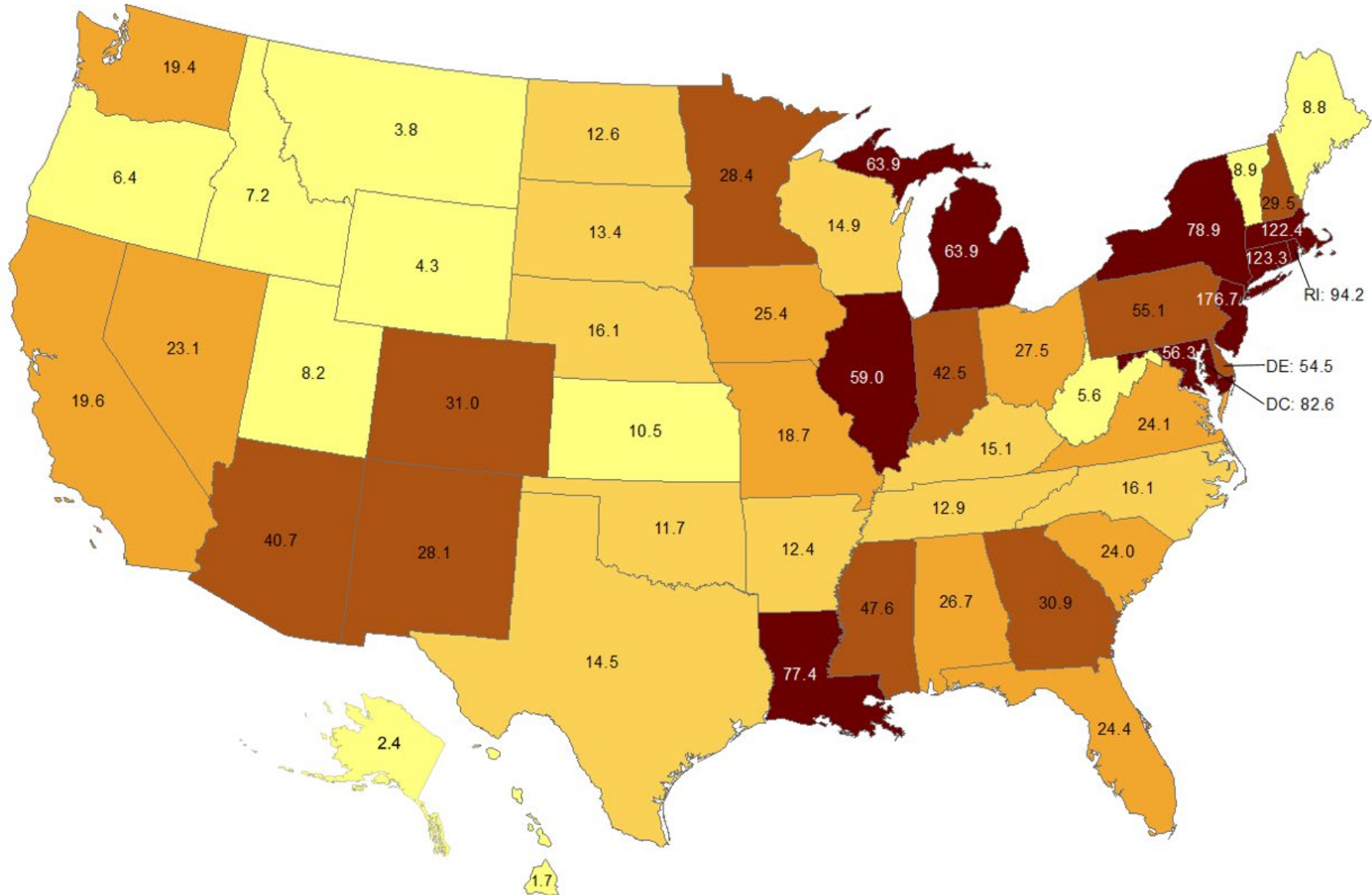
Data from CDC. Available at <https://www.cdc.gov/covid-data-tracker/index.html>

Data as of July 22, 2020

NOTE: CDC numbers include both Confirmed and Probable cases whereas the OSDH counts are limited to Confirmed cases.

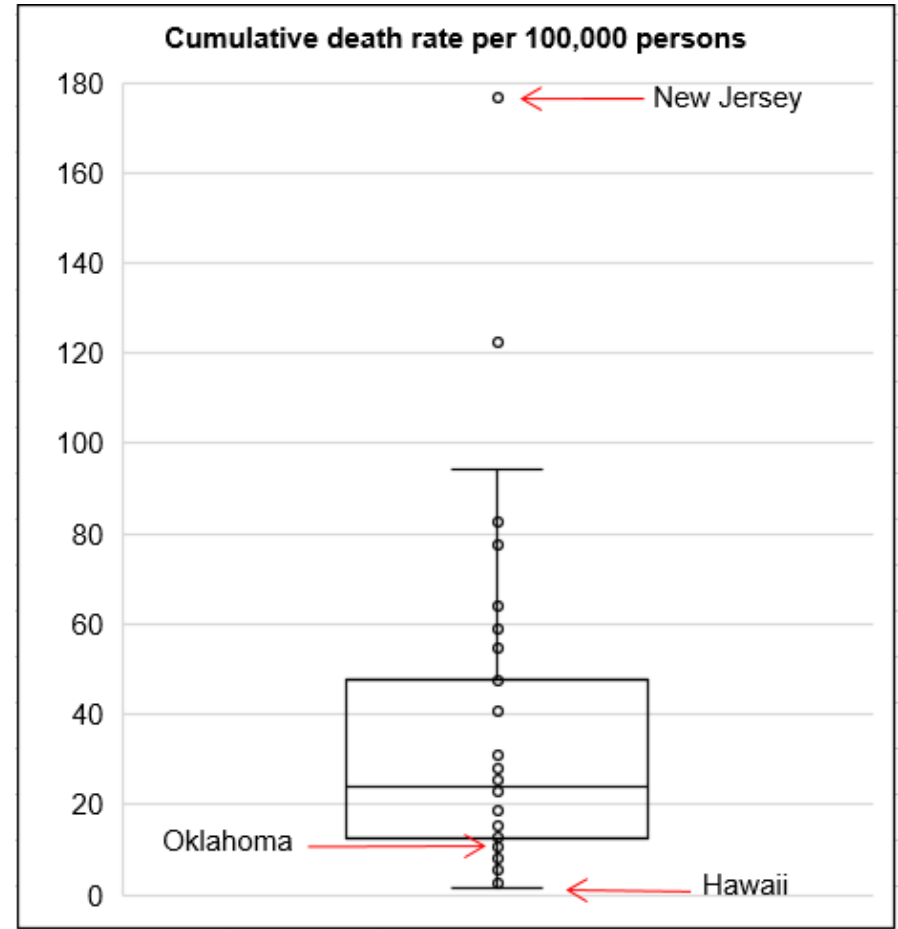
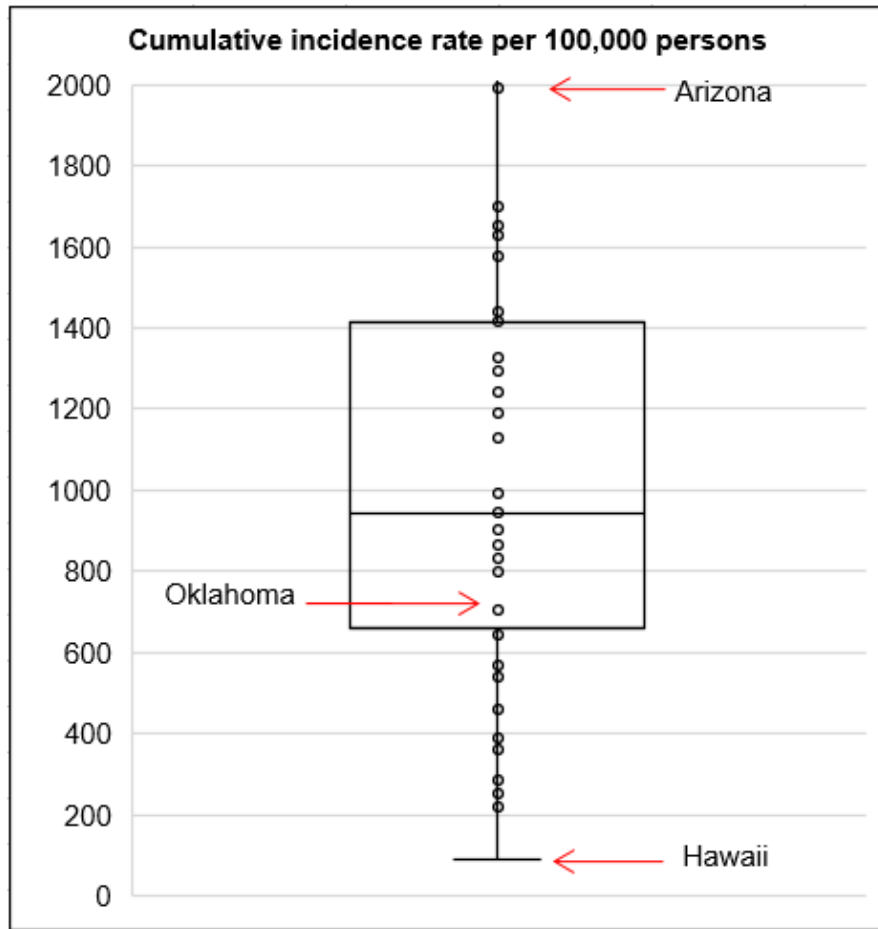
Cumulative death rate of reported COVID-19 cases

Oklahoma ranks **40** (out of all States and DC) in the cumulative death rate (per 100,000 persons) of reported COVID-19 cases in the US.



Data from CDC. Available at <https://www.cdc.gov/covid-data-tracker/index.html>
Data as of July 22, 2020

Cumulative incidence and cumulative death rate of reported COVID-19 cases



Interpretation: Oklahoma has cumulative incidence and cumulative death rate below the median of the US.

ACKNOWLEDGEMENT

The weekly report is made by possible through the efforts of county and city public health and healthcare professionals.

NOTES

Every effort is made to ensure accuracy and the data is up-to-date for the time period reported.
For daily updates on COVID-19, please visit <https://coronavirus.health.ok.gov/>

DISCLAIMER

The purpose of publishing aggregated statistical COVID-19 data through the OSDH Dashboard, the Executive Order Report, and the Weekly Epidemiology and Surveillance Report is to support the needs of the general public in receiving important and necessary information regarding the state of the health and safety of the citizens of Oklahoma. These resources may be used only for statistical purposes and may not be used in any way that would determine the identity of any reported cases.