

# OKLAHOMA COVID-19 WEEKLY REPORT

Weekly Epidemiology and Surveillance Report  
December 11 - 17, 2020



**PURPOSE** To provide up-to-date weekly epidemiological data on COVID-19 in Oklahoma.

## SNAPSHOT

	Dec 11 – Dec 17	Change <sup>1</sup>	Total
Cases	22,751	6.3%	248,204
Recovered cases <sup>2</sup>	20,061	0.0%	214,290
Deaths	164	13.9%	2,144

1. Change from the week of Dec 4- Dec 10, 2020.

2. Currently not hospitalized or deceased and 14 days after onset/report.

## KEY POINTS

- **22,751** cases were reported in the past week  
6.3% increase from the week before (Dec 4 – Dec 10).
- **164** deaths were reported in the past week  
13.9% increase from the week before (Dec 4 – Dec 10).
- **14,821 (6.0%)** cases have been hospitalized
- **2,447,260** specimens have been tested in total

CASES		DEATHS	
Persons aged 50 and over	Females	Persons aged 50 and over	Males
<b>34%</b>	<b>53%</b>	<b>96%</b>	<b>56%</b>
of <u>cases</u>	of <u>cases</u>	of <u>deaths</u>	of <u>deaths</u>

The average age of cases was **40** years.

The youngest case was **less than a year old** and the oldest case was **100+ years**.

The average age of individuals who died was **75** years.

The youngest individual to die from COVID-19 was **less than 15 years** and the oldest was **100+ years**.

## COVID- 19 VACCINE DATA

	Dec 11 – Dec 17	Total Number
Doses Received	33,150	33,150
Doses Administered	2,253	2,253

Source: COVID-19 Vaccination Reporting Specification Dataset  
Oklahoma State Immunization Information System (OSIIS)  
Data reflect information entered as of 11:59PM 12/16/2020

## COVID-19 VACCINE FRAMEWORK

### PHASE 1:

- Long Term Care Residents and Staff
- Health Care Workers Providing Direct Inpatient COVID Care
- Public health staff conducting front line COVID-19 pandemic mitigation and control activities
- Oklahoma, state licensed, Emergency Medical Technicians and Paramedics

### PHASE 2:

- First responders
- Health care workers providing direct, COVID outpatient care and services
- Adults age 65 and older, and adults of any age with comorbidities
- Teachers and staff in Pre-K-12 schools and educational settings
- Staff and residents in congregate locations and worksites
- Public health staff supporting front line efforts

### PHASE 3:

- Teachers, students, residents and administrative staff in educational settings (if the vaccine is approved for ages <18 years to receive the vaccine)
- Critical Infrastructure Personnel as Specified in the 3<sup>rd</sup> Executive Order

### PHASE 4:

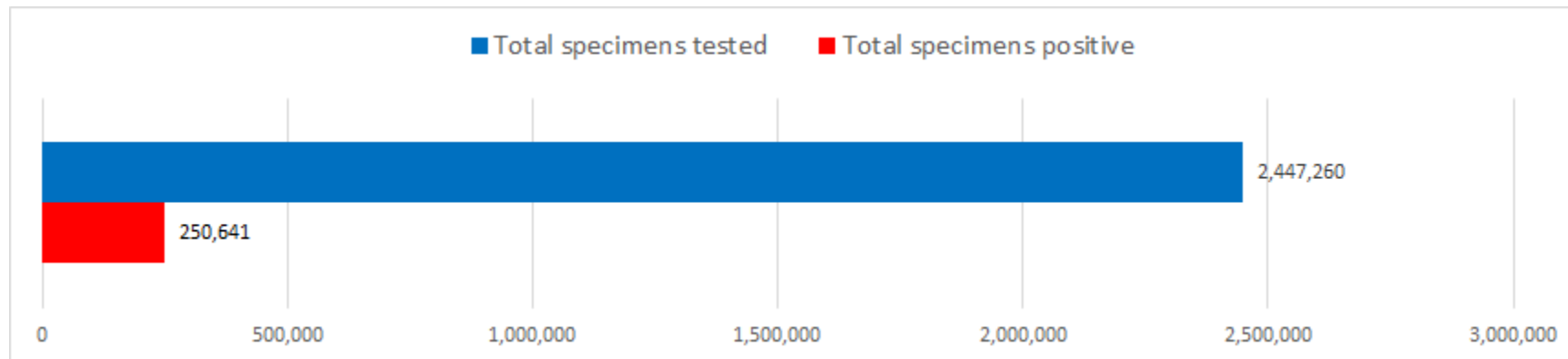
- Open to all Oklahoma residents

## DISEASE TESTING

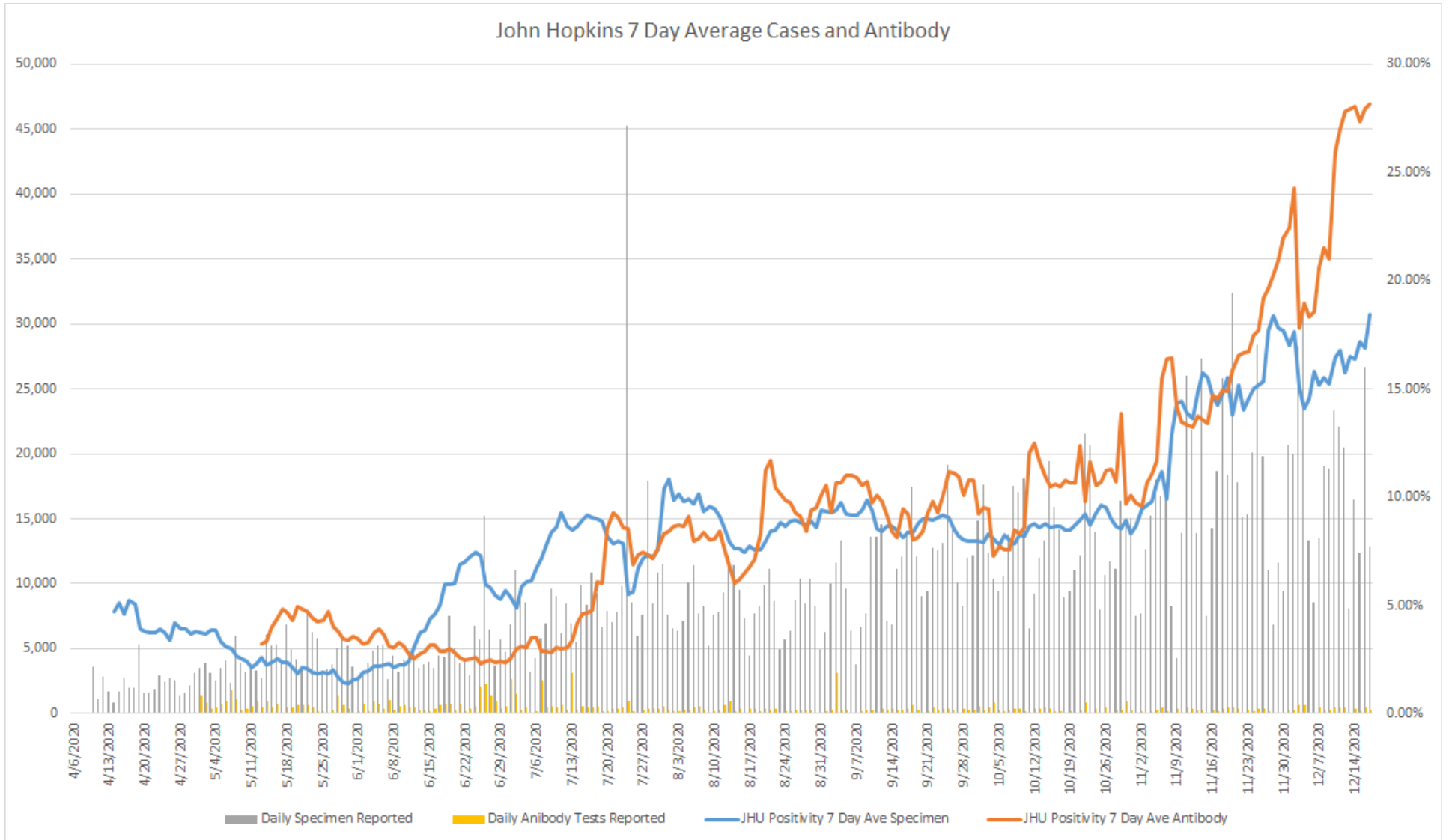
	Dec 11 – Dec 17	Total Number
Specimens tested, count	119,221	2,447,260
Specimens positive, count	17,751	250,641
Percent positive	14.9%	10.2%
Johns Hopkins positivity %	18.4%	10.2%
Antibody tested, count	2,221	103,518
Antibody positive, count	620	7,767
Antibody percent positive	27.9%	7.5%

Source: This data is obtained outside of individual case data reported to the OSDH Acute Disease Service and comes from a daily survey of state and private laboratories and facilities that are performing Covid-19 testing.

Note: Specimen counts may not reflect unique individuals.



# JOHNS HOPKINS 7 DAY AVERAGE POSITIVITY RATE FOR SPECIMEN AND ANTIBODY CASES

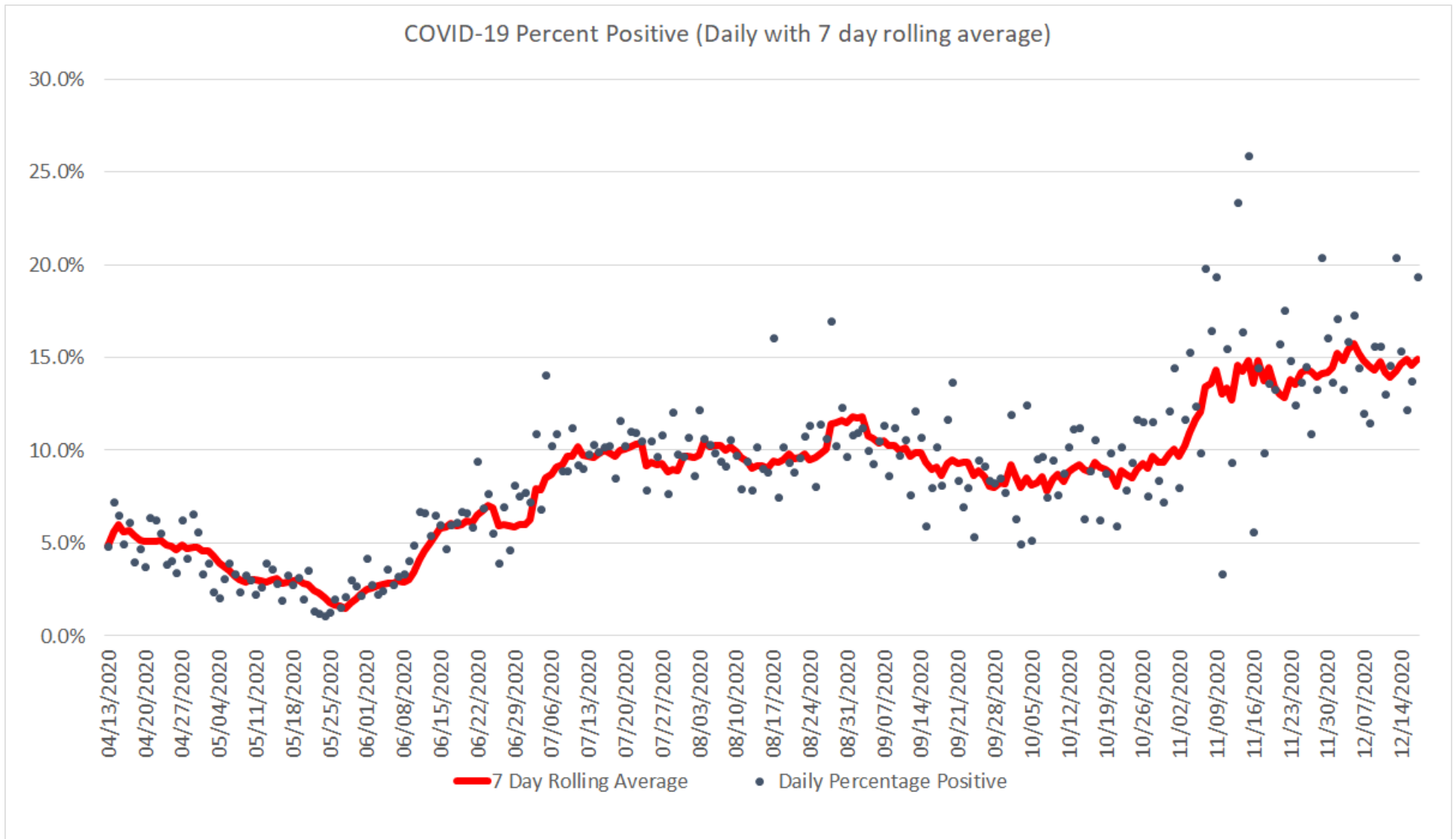


Oklahoma, December 17, 2020

Source: This data is obtained outside of individual case data reported to the OSDH Acute Disease Service and comes from a daily survey of state and private laboratories and facilities that are performing Covid-19 testing.

Note: On July 24, 2020 fourteen labs began reporting to OSDH that had been testing since May 18, 2020.

# COVID-19 TESTS DAILY PERCENT POSITIVE WITH 7 DAY ROLLING AVERAGE



Oklahoma, December 17, 2020

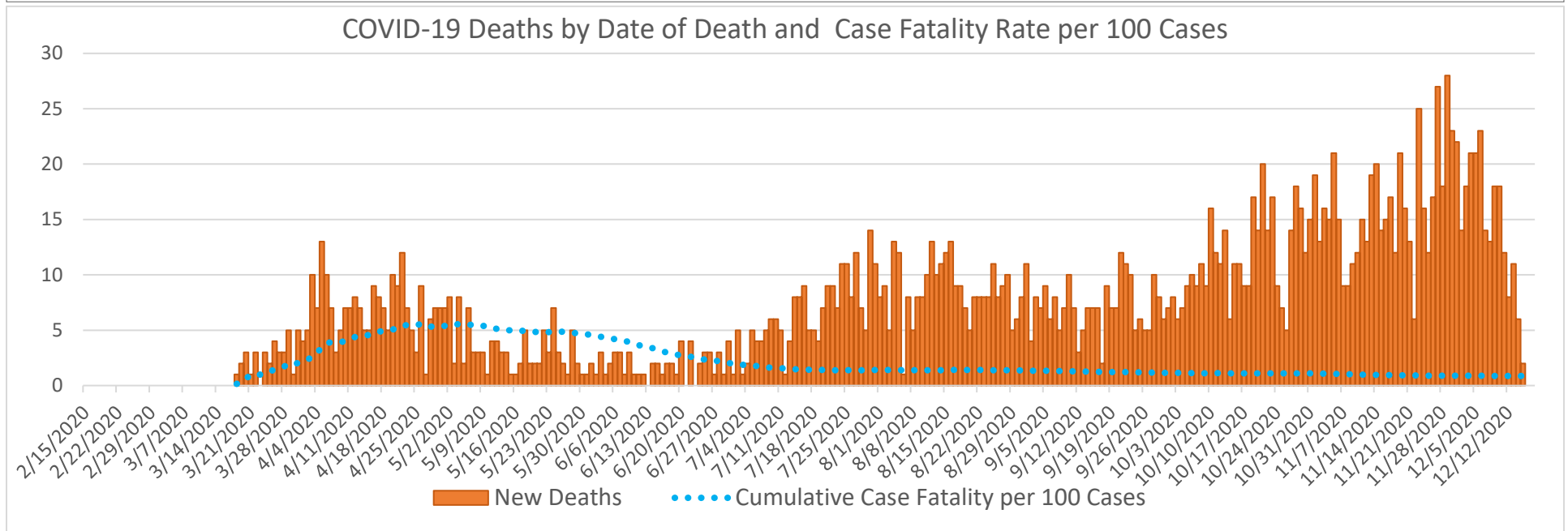
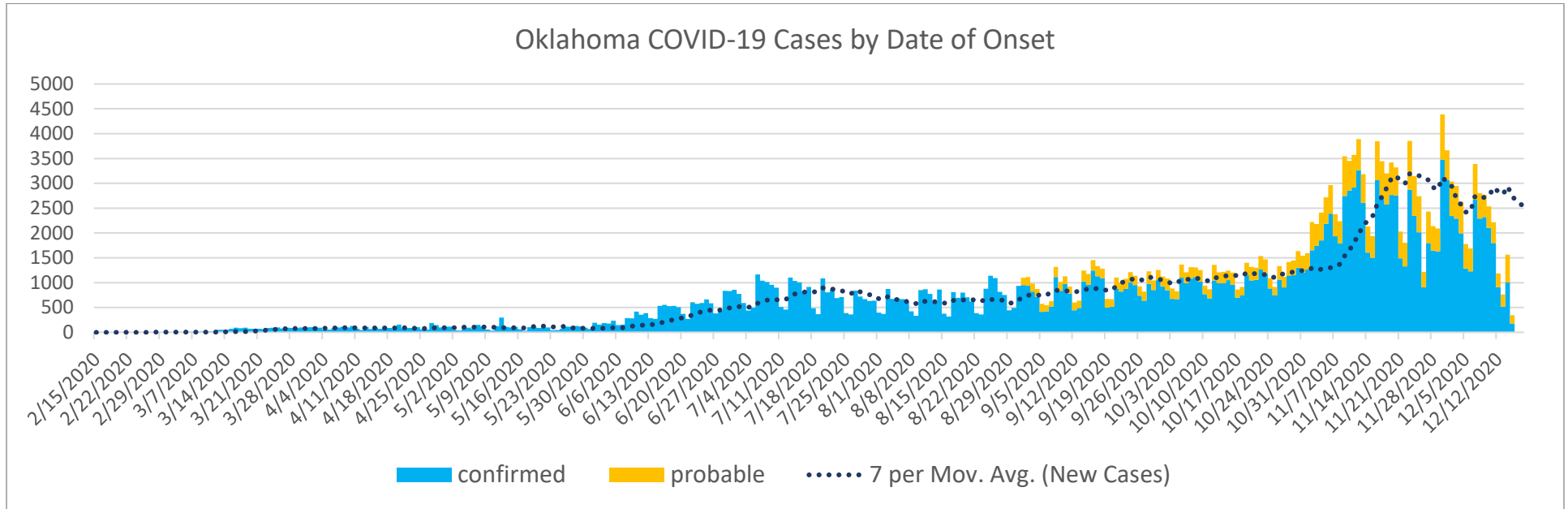
Source: This data is obtained outside of individual case data reported to the OSDH Acute Disease Service and comes from a daily survey of state and private laboratories and facilities that are performing Covid-19 testing.

## EPIDEMIOLOGICAL ESTIMATES

	Estimate	Notes / Interpretation
<b>Cases</b>		
Cumulative incidence*	6,294.7 (per 100,000 persons)	From March 7 to December 17, there were about 6,294 (per 100,000) new cases of COVID-19 in Oklahoma.
Absolute change in cumulative incidence from previous week	34.1 (per 100,000 persons)	Compared to December 4 – December 10 there were 34 (per 100,000) more cases of COVID-19 reported in Oklahoma during the past week (Dec 11– Dec 17).
<b>Disease Severity</b>		
Case-fatality risk (crude)	0.9%	The estimate is not adjusted for the lag time from reporting to death (i.e., delay between the time someone dies and the time their death is reported). The fatality estimate could be lower due to cases that were undiagnosed or had milder symptoms.
Cumulative Hospitalization rate (overall)	375.9 (per 100,000 persons)	About 375 people per 100,000 have ever been hospitalized for COVID-19 during this outbreak.

# CASES AND DEATHS

New cases (by date of onset) and new deaths (by date of death) of COVID-19 in Oklahoma, February–December 2020



Please note the different axes for new cases (top—from 0 to 5,000 for new cases) and new deaths (bottom—from 0 to 30 for new deaths). Additionally, a 7 day lag has been applied to the trend line based on information collected to-date for 7/19 and 7/25 where within 7 days of onset date approximately 80% of the cases had been reported.

## DEMOGRAPHIC INFORMATION AS OF DECEMBER 17, 2020

		Cases count (%) <sup>1</sup>		Deaths count (%) <sup>1</sup>		Cumulative Incidence Rate <sup>2</sup>	Cumulative Mortality Rate <sup>2</sup>
<b>Oklahoma</b>		<b>248,204</b>		<b>2144</b>		<b>6,294.7</b>	<b>54.4</b>
<b>Gender</b>							
	Male	117,548	(47.4)	1200	(56.0)	6,018.7	61.4
	Female	130,656	(52.6)	944	(44.0)	6,565.5	47.4
	Unknown	0	(0.0)	0	(0.0)		
<b>Age group</b>							
	Under 1- 4	4,593	(1.9)	0	(0.0)	1,763.6	0.0
	5-14	16,022	(6.5)	1	(0.0)	2,978.6	0.2
	15-24	45,065	(18.2)	3	(0.1)	8,379.0	0.6
	25-34	41,255	(16.6)	14	(0.7)	7,594.6	2.6
	35-44	39,902	(16.1)	31	(1.4)	8,136.8	6.3
	45-54	35,063	(14.1)	95	(4.4)	7,617.3	20.6
	55-64	30,491	(12.3)	272	(12.7)	6,179.2	55.1
	65-74	20,250	(8.2)	562	(26.2)	5,646.2	156.7
	75-84	10,675	(4.3)	599	(27.9)	5,686.9	319.1
	85+	4,886	(2.0)	567	(26.4)	6,675.2	774.6
	Unknown	2	(0.0)				
<b>Race</b>							
	American Indian or Alaska Native	23,631	(9.5)	185	(8.6)	7,692.8	60.2
	Asian or Pacific Islander	4,998	(2.0)	33	(1.5)	5,644.1	37.3
	Black or African American	14,563	(5.9)	133	(6.2)	5,062.2	46.2
	Multiracial/Other	8,668	(3.5)	66	(3.1)	2,094.9	16.0
	White	142,308	(57.3)	1541	(71.9)	5,000.4	54.1
	Unknown	54,036	(21.8)	186	(8.7)		
<b>Ethnicity</b>							
	Hispanic or Latino	29,401	(11.8)	120	(5.6)	6,852.1	28.0
	Not Hispanic or Latino	153,431	(61.8)	1754	(81.8)	4,366.3	49.9
	Unknown/Other	65,372	(26.3)	270	(12.6)		

1. Percentages may not add up to 100 due to rounding.

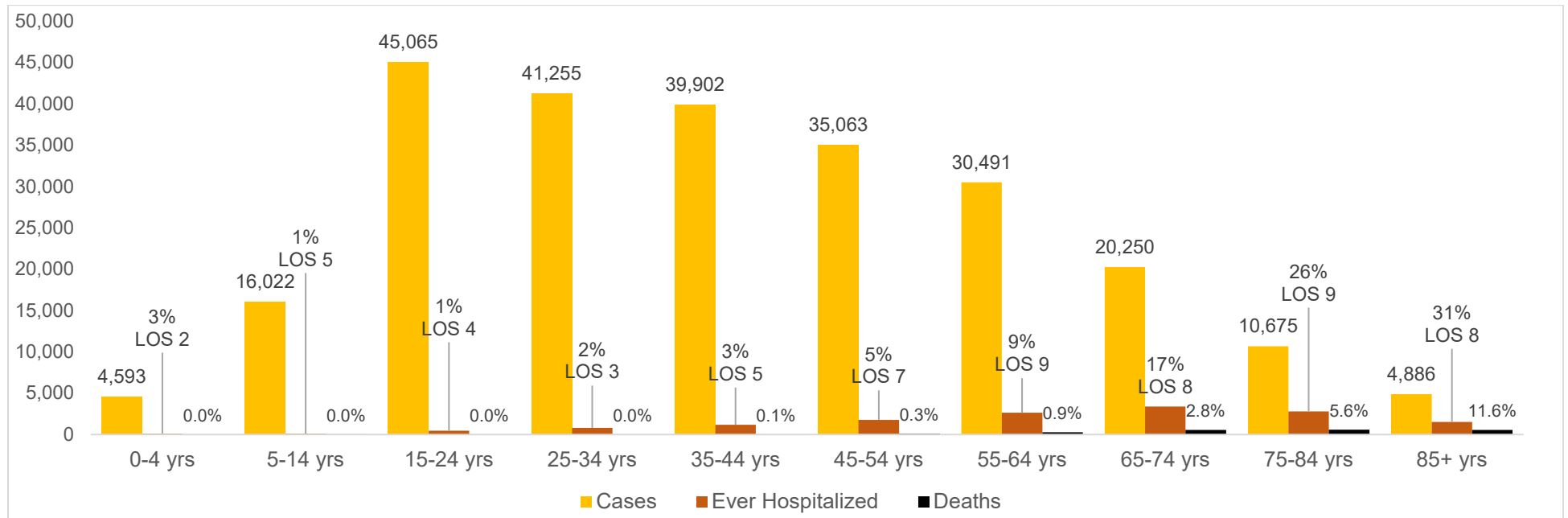
2. Rate per 100,000 population



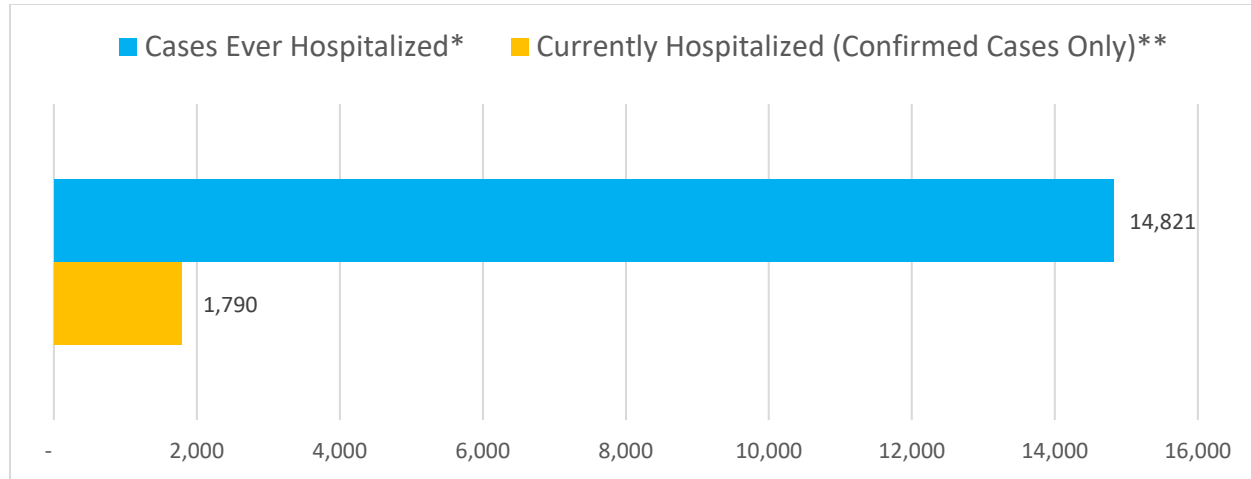
## AGE DISTRIBUTION OF NEW CASES/DEATHS FROM DECEMBER 11- DECEMBER 17

Age group	New Cases	Percentage	New Deaths	Percentage
Under 1- 4	447	2.0%	0	0.0%
5-14	1,710	7.5%	0	0.0%
15-24	3,698	16.3%	0	0.0%
25-34	3,590	15.8%	0	0.0%
35-44	3,696	16.2%	3	1.8%
45-54	3,243	14.3%	9	5.5%
55-64	3,011	13.2%	21	12.8%
65-74	1,918	8.4%	45	27.4%
75-84	1,019	4.5%	46	28.0%
85+	419	1.8%	40	24.4%

## CUMULATIVE CASES, PERCENT HOSPITALIZED, AVERAGE LENGTH OF STAY (OCT CASES) AND DEATHS BY AGE GROUP



# HOSPITALIZATIONS



**14,821 Ever Hospitalized Cases** (includes discharged, deceased, currently hospitalized and recovered).

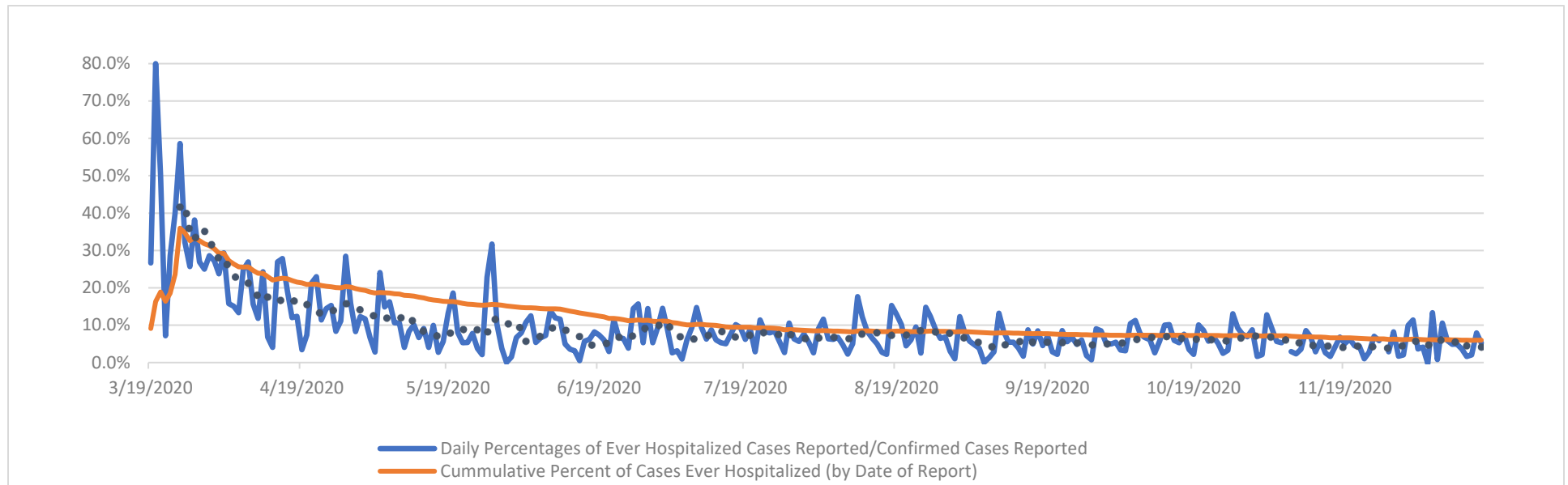
Average age of cases hospitalized: **62.2**

Average age of cases not hospitalized: **39.2**

\*Ever hospitalized includes discharged, deceased, currently hospitalized and recovered as of 12/17/2020.

\*\*Source OSDH Beds Survey. Note, facility response rate of 99% on 12/17/2020. This total reflects all cases as reported by Acute, Focus, Rehabilitation and Tribal facilities that responded to the survey on this date.

## PERCENT OF CASES EVER HOSPITALIZED (by date of report)



Source: OSDH Acute Disease Registry

.....

## AT-RISK SETTINGS HEALTHCARE & NON-HEALTHCARE

Status	Non-Healthcare Worker count (%)*	Healthcare Worker count (%)*
Active	30,926 (13.0)	844 (7.9)
Deceased	2,124 (0.9)	20 (0.2)
Recovered	204,503 (86.1)	9,787 (91.9)
<b>Total</b>	<b>237,553</b>	<b>10,651</b>

## CORRECTIONAL FACILITIES<sup>1</sup>

	Cases (%)*	Deaths (%)*
Inmates	3,936 (78.8)	31 (93.9)
Staff	1,060 (21.2)	2 (6.1)
<b>Total</b>	<b>4,996</b>	<b>33</b>

<sup>1</sup>Correctional facilities include prisons, jails, and juvenile detention center

## LONG TERM CARE (LTC) FACILITIES<sup>2</sup>

	Cases (%)*	Deaths (%)*
Residents	5,414 (62.3)	681 (99.4)
Staff	3,273 (37.7)	4 (0.6)
<b>Total</b>	<b>8,687</b>	<b>685</b>

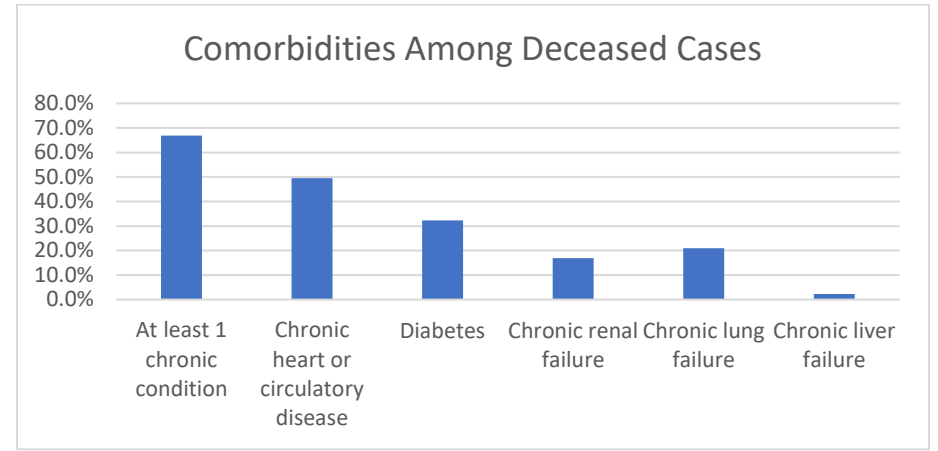
<sup>2</sup>Long term care facility or nursing home.

*Detailed counts of LTC Cases by County and Facility can be found at the end of this report.*

## COMORBIDITIES AMONG DECEASED CASES

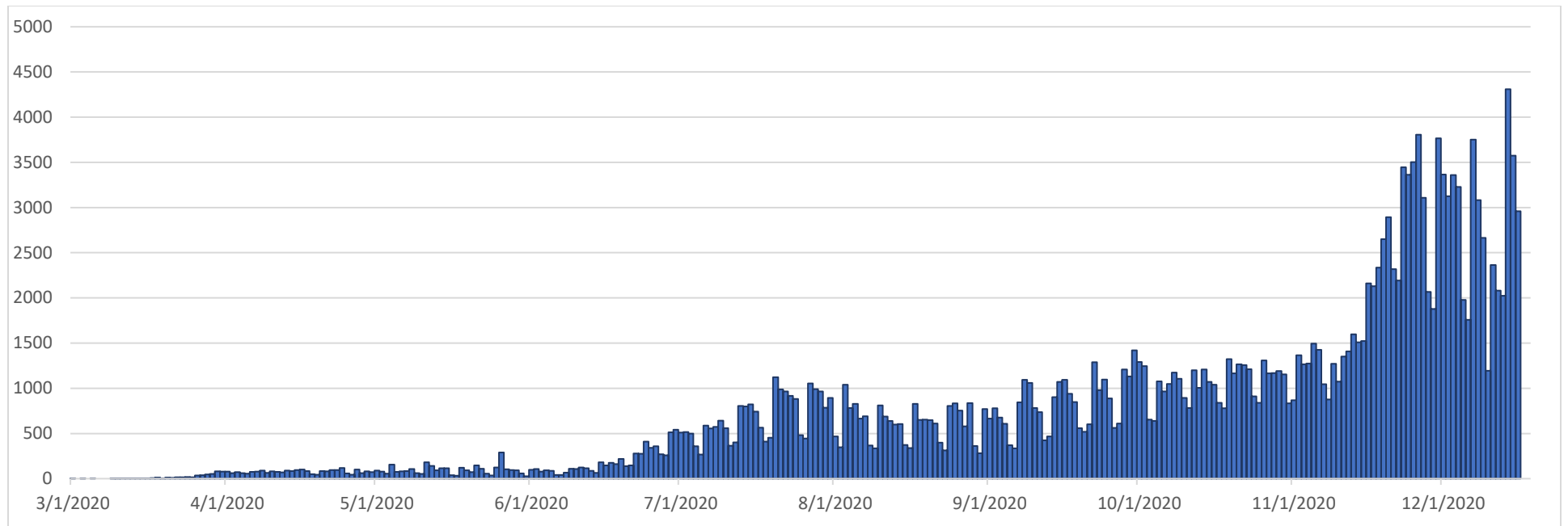
Comorbidities	Number (%)
At least 1 chronic condition <sup>3</sup>	1,435 (66.9)
Chronic heart or circulatory disease	1,063 (49.6)
Diabetes	693 (32.3)
Chronic renal failure	362 (16.9)
Chronic lung failure	448 (20.9)
Chronic liver failure	50 (2.3)

<sup>3</sup>Chronic conditions include; chronic heart or circulatory disease, diabetes, chronic lung failure, chronic liver failure and renal failure.



## RECOVERED CASES

Distribution of recovered cases of COVID-19, March – December 2020, Oklahoma



Note: A recovered case is an individual currently not hospitalized or deceased AND 14 days after the onset of symptoms

## IMPACT OF MASK MANDATES

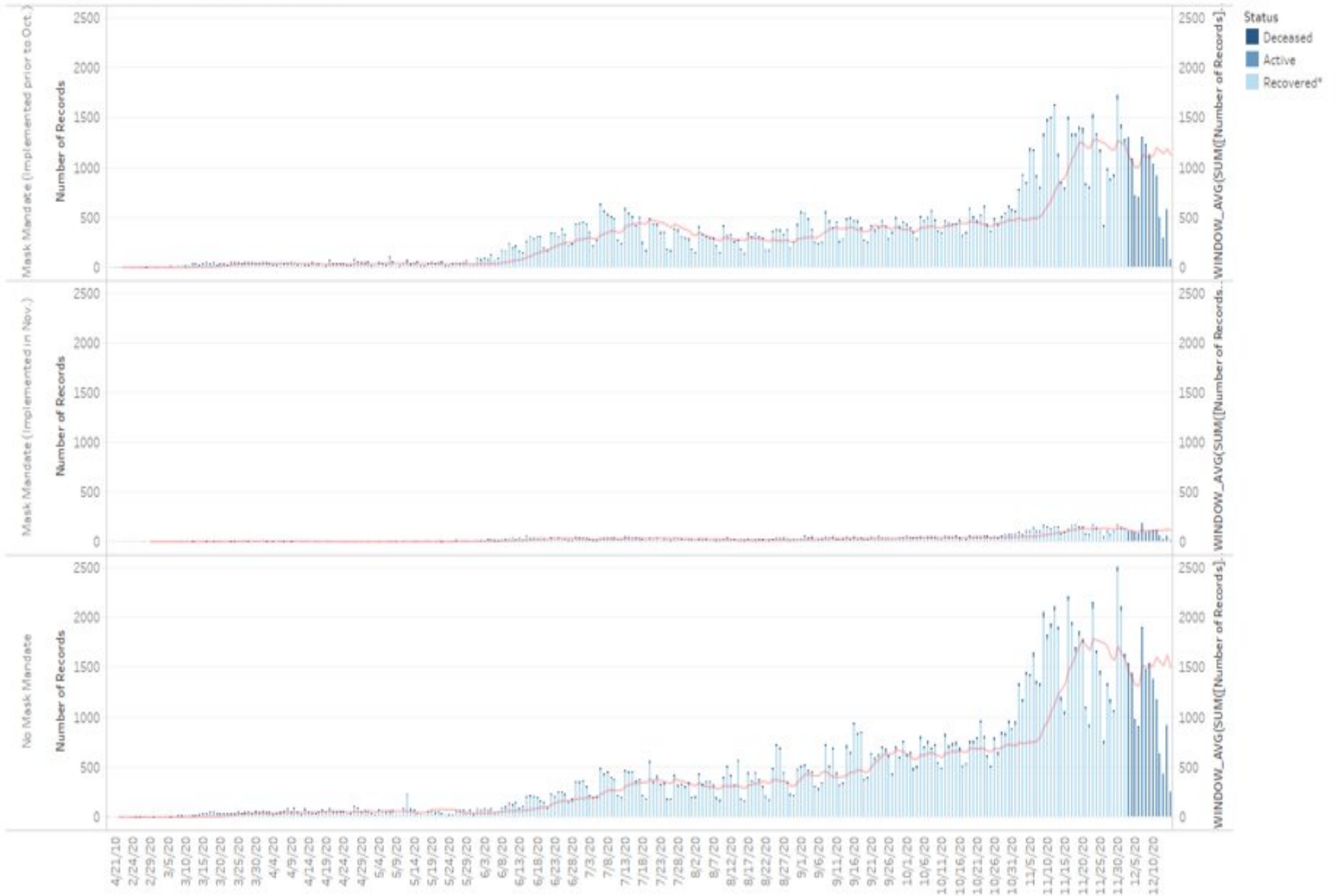
There are several important factors to consider in examining the data on case rates in mask mandate communities vs. those without:

1. As can be seen in this week's figure, there have been several municipalities adopt a mask mandate recently. Because mask usage prevents new infections but does not impact those currently in the incubation period, it is not appropriate to include these recent additions in the same group as communities that adopted mandates prior to October. Indeed, it is likely that increasing disease rates in these communities influenced the decision to adopt mandates.
2. The percentage change in case rates provided represent only a comparison from one single day to another. The full difference in rates can only be estimated by comparing data on all days within the period of interest. Such analysis is beyond the scope of this summary.
3. Mask mandates have been implemented primarily in densely populated metropolitan areas. Experience has shown that, in absence of mitigation efforts, such urban areas will have higher rates of disease transmission than in less populated areas. This can be observed in the graph above in the period before mid-July. The rate of increase was clearly higher in those communities that eventually adopted mask mandates. If urban populations have rates at or below those of less populated areas, it is likely that mitigation efforts are having a beneficial impact. Of course, mask mandates are not the only mitigation effort being employed, and it is not possible to determine what effect that alone has.

	7 Day Average Number of Cases by date of Onset* with 7 day lag						Percent Change 8/1 to 12/15	Percent Change 11/1 to 12/15
	1-Aug	1-Sep	1-Oct	1-Nov	1-Dec	15-Dec		
Mask Cities (Prior to Oct.)	330	291	379	478	1,249	1,128	242%	136%
per 100,000 Pop'l	20.5	18.1	23.5	29.7	77.5	70.0		
Mask Cities (Nov.)	25	21	37	48	138	116	364%	142%
per 100,000 Pop'l	17.7	14.9	26.2	34.0	97.6	82.1		
No Mask Areas	319	386	628	717	1,641	1,497	369%	109%
per 100,000 Pop'l	14.5	17.5	28.5	32.5	74.5	67.9		
Mask (Prior to Oct.) vs No Mask Incidence Difference	41%	3%	-17%	-9%	4%	3%		

# IMPACT OF MASK MANDATES (continued)

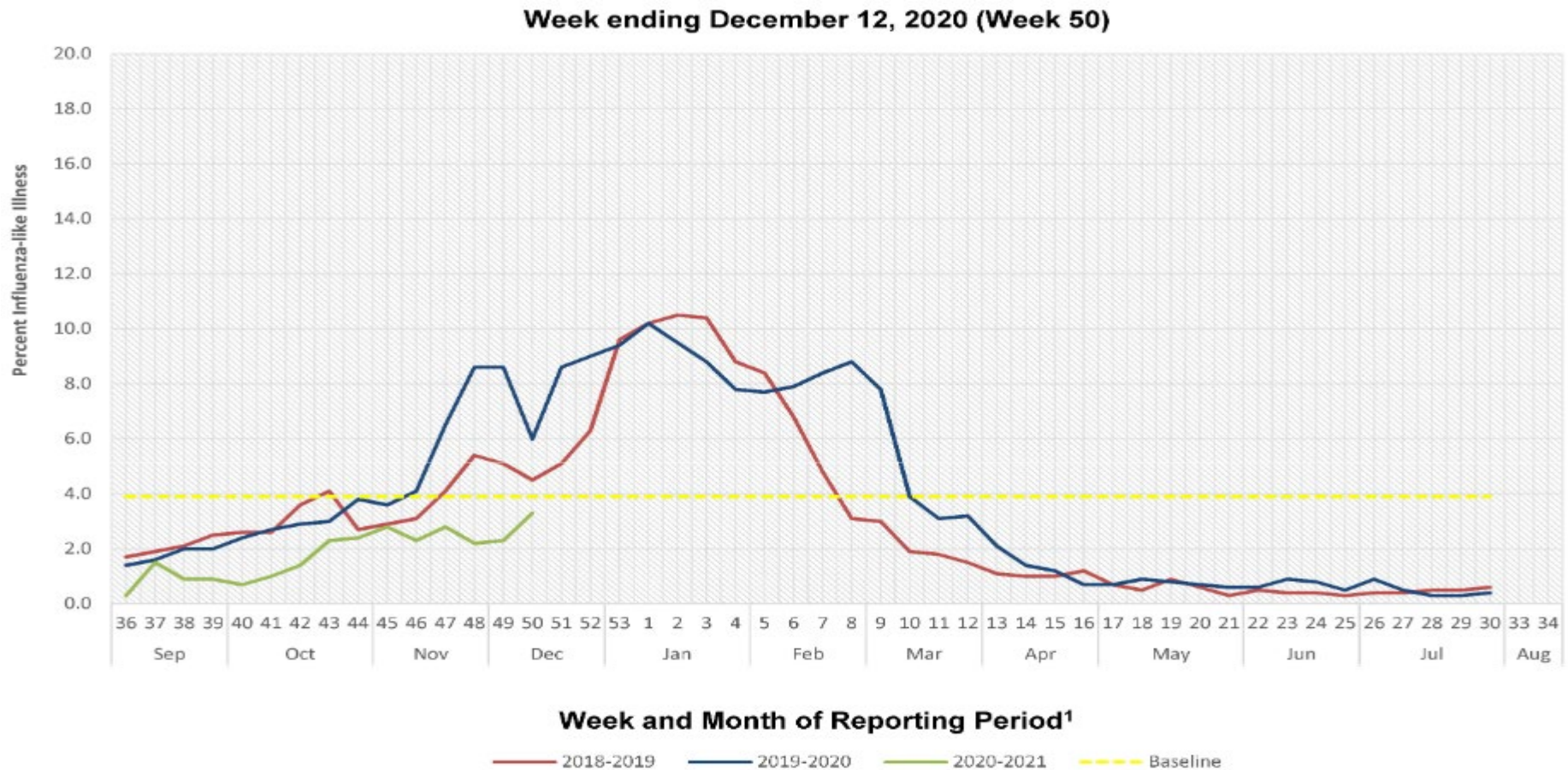
Status by Date of Onset as of 12/17/2020



The trends of sum of Number of Records and WINDOW\_AVG(SUM([Number of Records]), -14, -7) for Event Dt Day broken down by Mask Mandate. For pane Sum of Number of Records: Color shows details about Status. The view is filtered on Status, which keeps Active, Deceased and Recovered\*.

## SYMPTOMS CRITERIA

### WEEKLY PERCENT OF INFLUENZA-LIKE ILLNESS BASED ON TOTAL PATIENT VISITS TO SENTINEL CLINICIANS, OKLAHOMA VIRAL RESPIRATORY ILLNESS SURVEILLANCE SYSTEM, 2018-2021



<sup>1</sup>These units correspond to the number of weeks in a year and allow for a comparison between multiple seasons.

**Interpretation:** Data on Influenza-Like Illness (ILI) decreased to 3.3% of outpatient visits exhibiting fever with cough or sore throat. This week's value of 3.3% is below Oklahoma's baseline ILI of 3.9%.

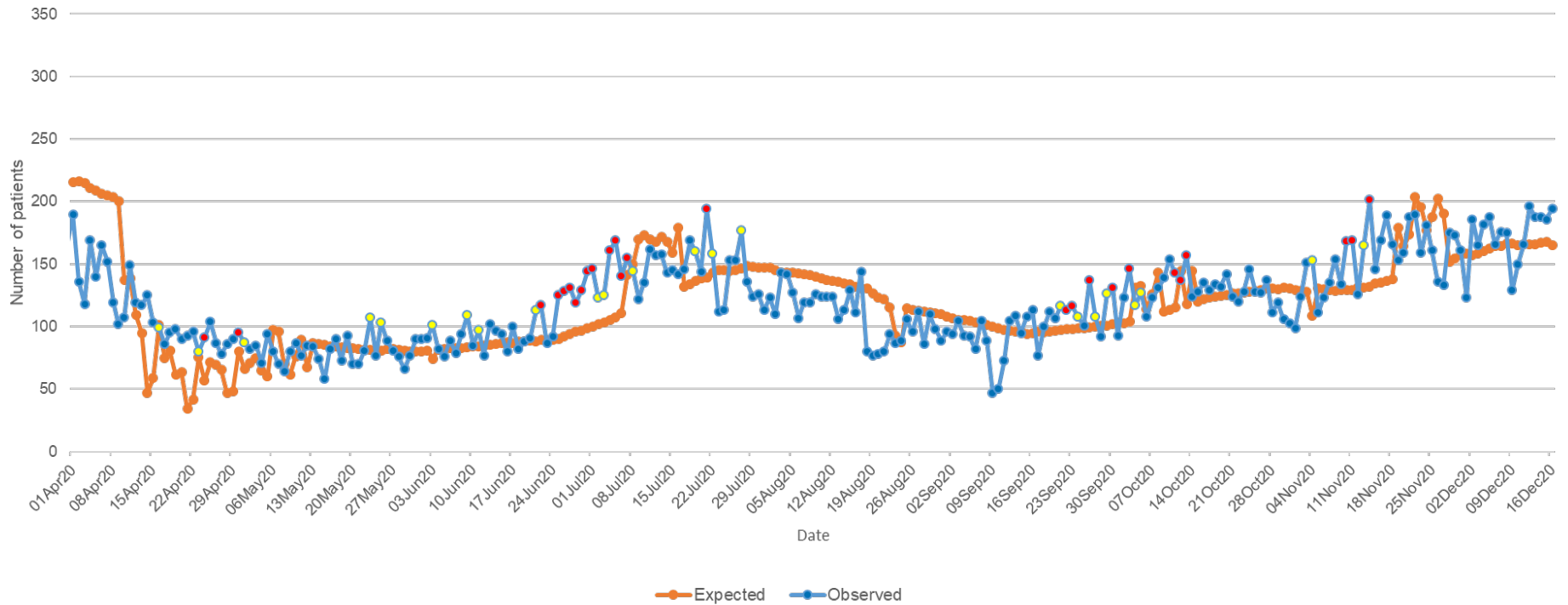
**Note:** Data current up to week ending December 12, 2020 (Week 50).

**Source:** <https://oklahoma.gov/content/dam/ok/en/health/health2/aem-documents/prevention-and-preparedness/acute-disease-service/disease-information/flu-view>



# COVID-19 RELATED EMERGENCY DEPARTMENT VISITS

Oklahoma State Syndromic Surveillance of  
COVID-19 related ED Visits  
April 1- December 16, 2020



**Interpretation:** Data from syndromic surveillance shows that the number of COVID-19 related emergency department visits has been within the expected range for the past 2 weeks as indicated by the blue dots on the observed line.

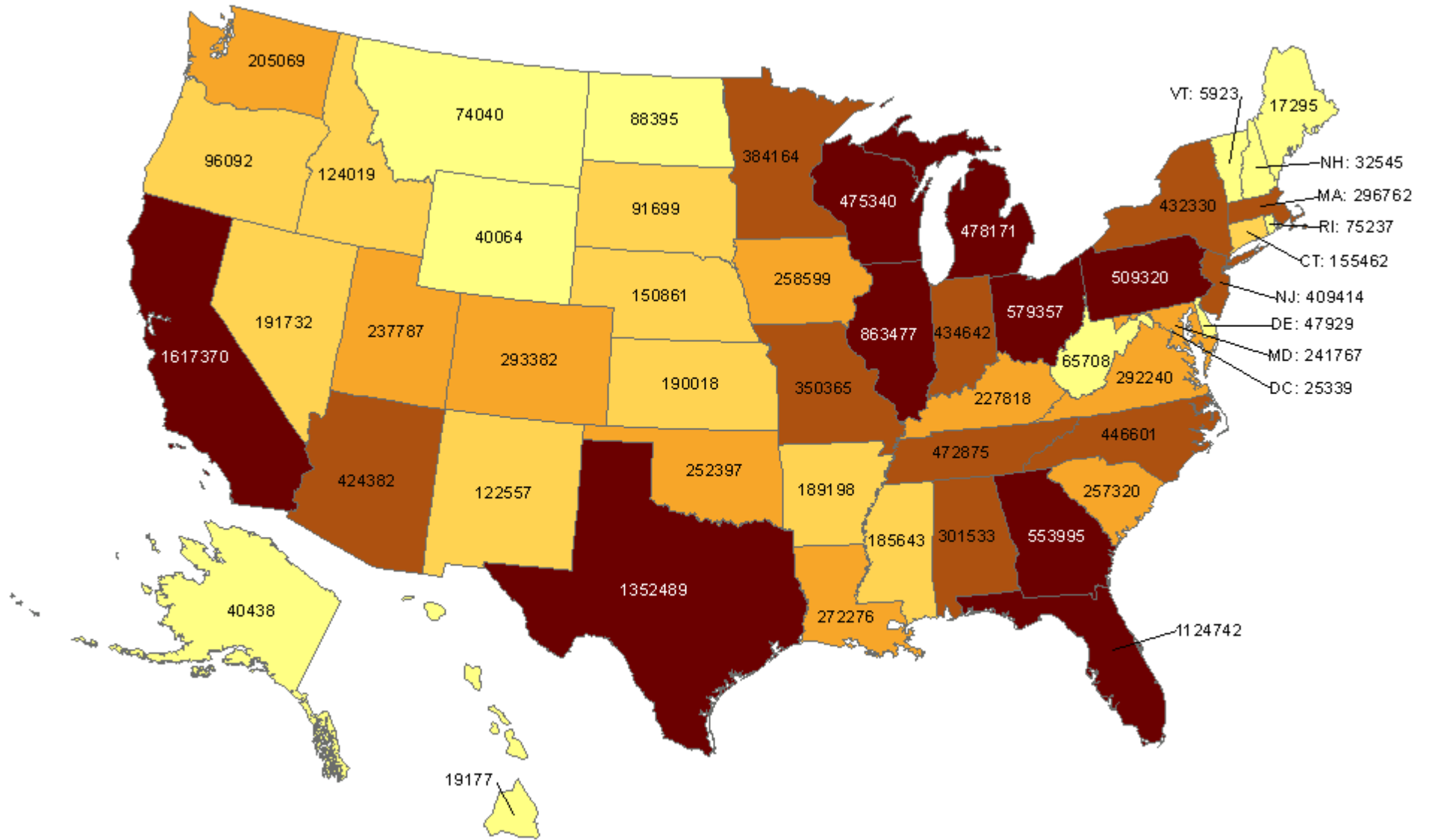
.....



# OKLAHOMA IN COMPARISON

## Total number of reported COVID-19 cases

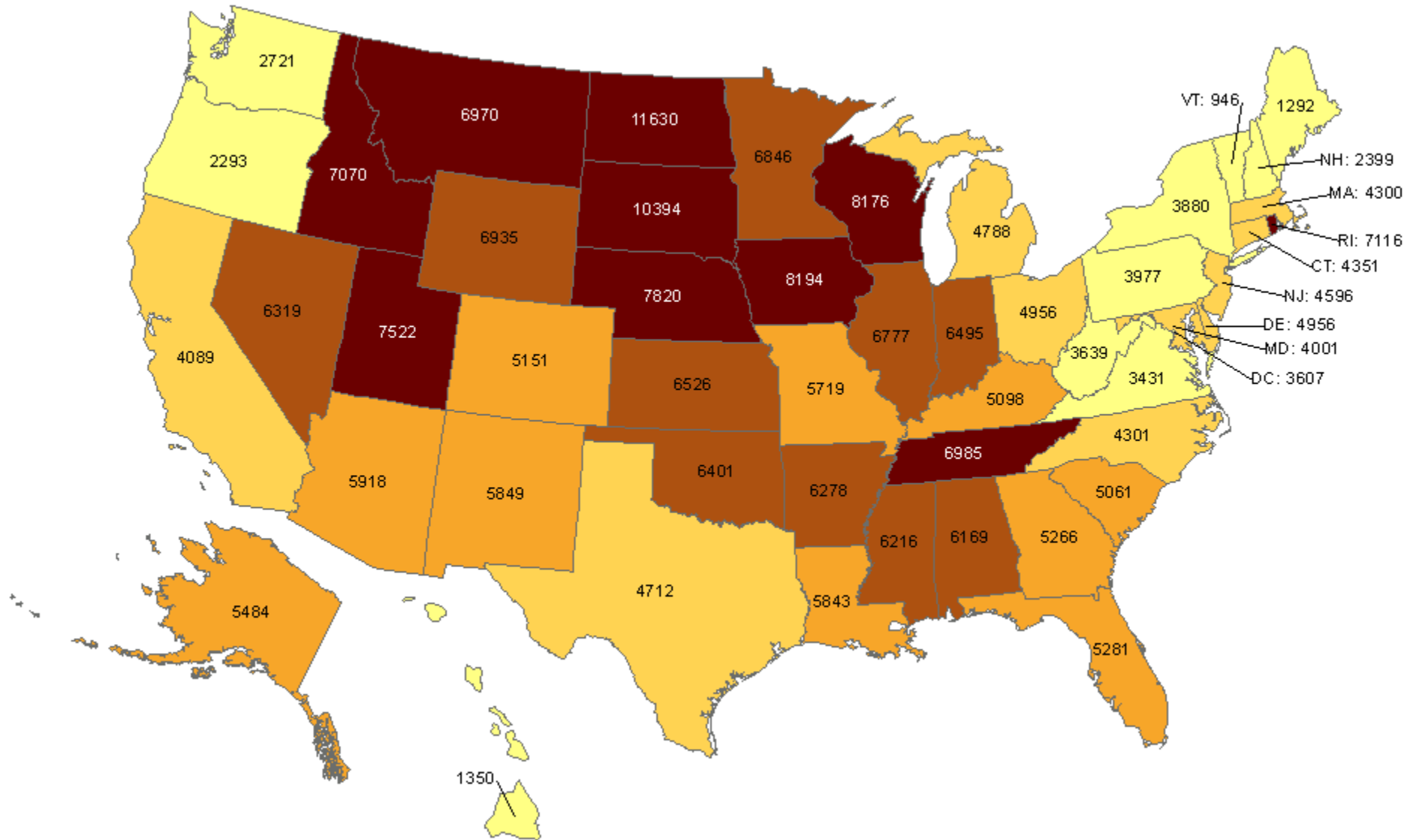
Oklahoma ranks **25** (out of all States and DC) in the total number of reported COVID-19 cases in the US.



Data from CDC. Available at <https://www.cdc.gov/covid-data-tracker/index.html>  
Data as of December 16, 2020

## Cumulative incidence of reported COVID-19 cases

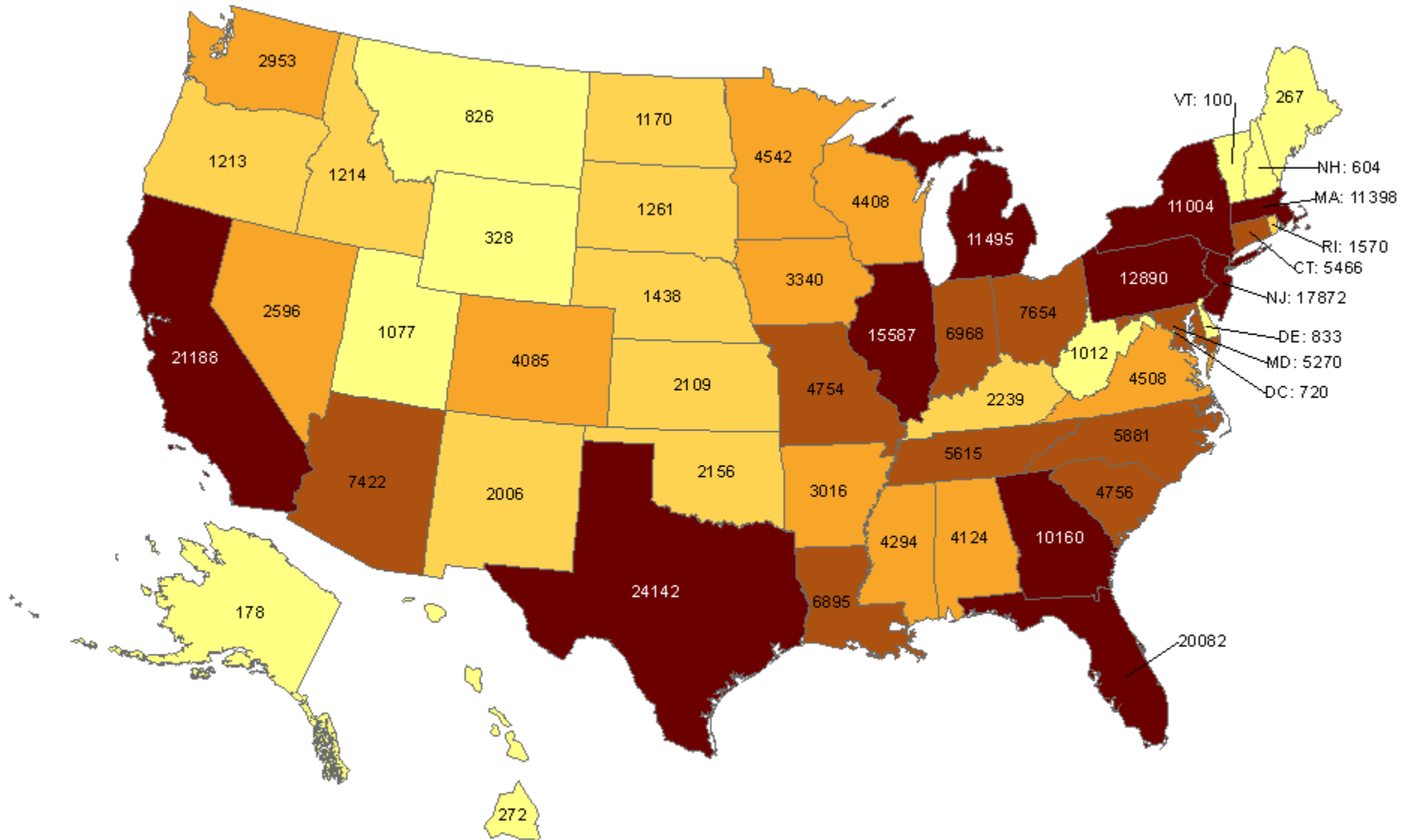
Oklahoma ranks **16** (out of all States and DC) in the cumulative incidence (per 100,000 persons) of reported COVID-19 cases in the US.



Data from CDC. Available at <https://www.cdc.gov/covid-data-tracker/index.html>  
Data as of December 16, 2020

## Total number of reported COVID-19 deaths

Oklahoma ranks **32** (out of all States and DC) in the total number of reported COVID-19 deaths in the US.



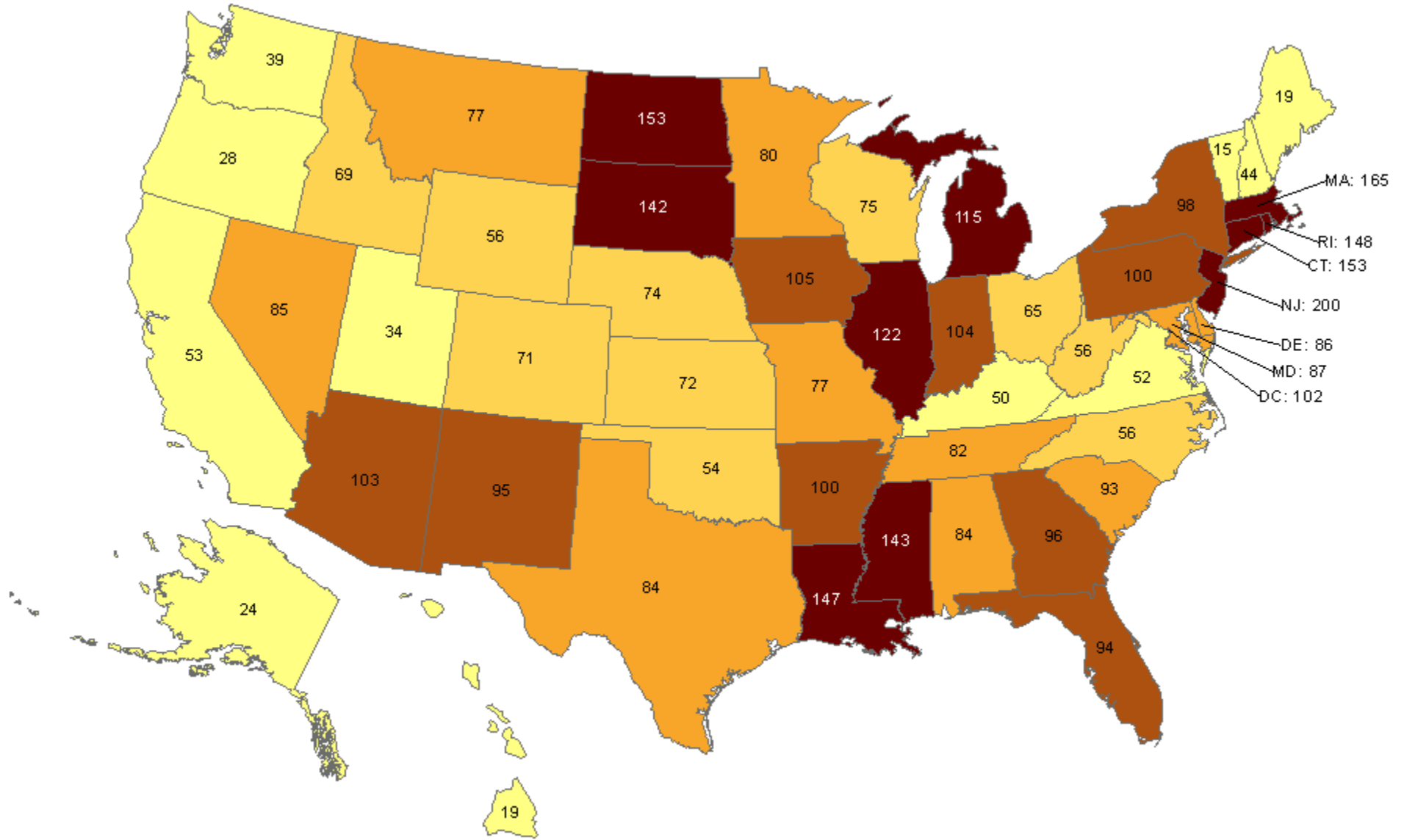
Data from CDC. Available at <https://www.cdc.gov/covid-data-tracker/index.html>

Data as of December 16, 2020

NOTE: CDC numbers include both Confirmed and Probable cases.

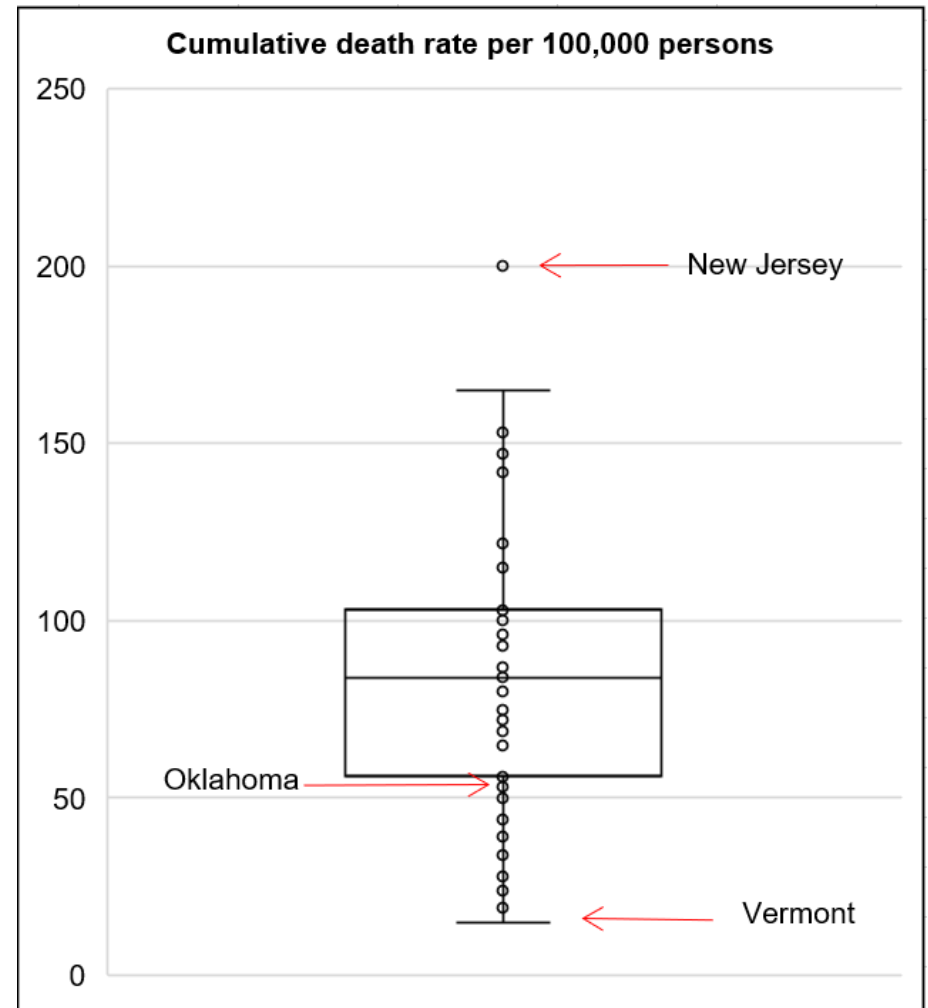
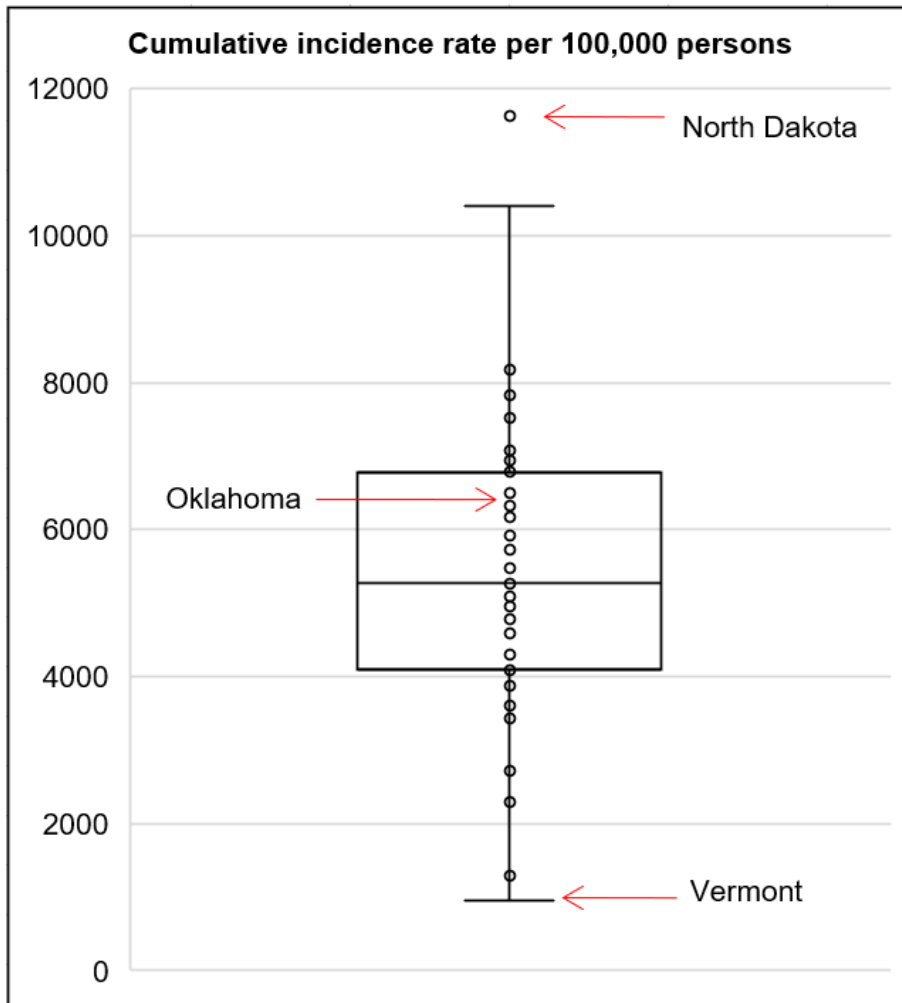
## Cumulative death rate of reported COVID-19 cases

Oklahoma ranks **40** (out of all States and DC) in the cumulative death rate (per 100,000 persons) of reported COVID-19 cases in the US.



Data from CDC. Available at <https://www.cdc.gov/covid-data-tracker/index.html>  
Data as of December 16, 2020

## Cumulative incidence and cumulative death rate of reported COVID-19 cases



**Interpretation:** Oklahoma has cumulative incidence that is **above the median** of the US and cumulative death rate **below the median** of the US.

# OKLAHOMA EXCESS DEATH ANALYSIS

- + indicates observed count above threshold
- Predicted number of deaths from all causes
- threshold for excess deaths

Weekly number of deaths (from all causes)

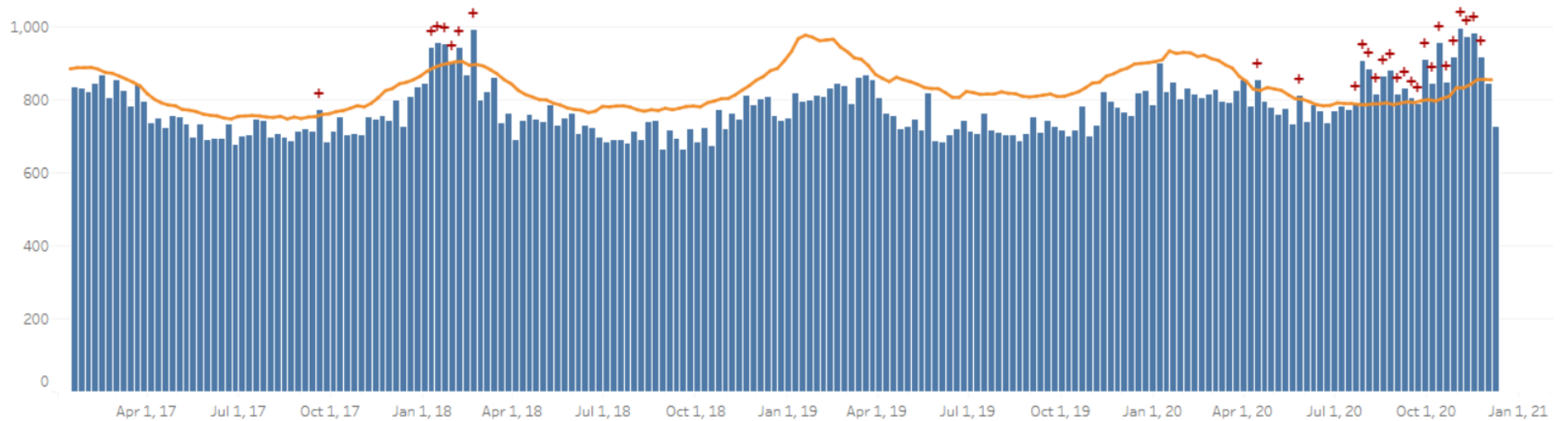


Figure notes: Contains data up to the week-ending date of December 5, 2020. Data in recent weeks are incomplete. Only 60% of the death records are submitted to NCHS within 1-days of the date of death, and completeness varies by jurisdiction.

Source: CDC, National Center for Health Statistics, [https://www.cdc.gov/nchs/nvss/vsrr/covid19/excess\\_deaths.htm#dashboard](https://www.cdc.gov/nchs/nvss/vsrr/covid19/excess_deaths.htm#dashboard), Dec 17, 2020 9AM

---

## COVID-19 LTC OR NURSING HOME ASSOCIATED CASES BY COUNTY

Status as of Midnight December 16 2020

Data are preliminary and are subject to change as cases are processed.

County of Residence	Cases	Recovered**	Deaths
Adair	4	3	0
Alfalfa	4	4	0
Atoka	68	51	1
Beaver	15	12	1
Beckham	83	72	2
Blaine	22	19	0
Bryan	128	102	11
Caddo	141	117	15
Canadian	167	153	3
Carter	26	17	2
Cherokee	63	30	2
Choctaw	82	78	1
Cleveland	531	434	62
Coal	64	55	3
Comanche	110	77	8
Cotton	43	37	4
Craig	29	21	1
Creek	148	127	10
Custer	147	88	12

County of Residence	Cases	Recovered**	Deaths
Delaware	172	126	25
Dewey	5	3	1
Ellis	5	5	0
Garfield	155	137	9
Garvin	25	19	1
Grady	132	109	12
Grant	12	11	1
Greer	50	41	6
Harmon	12	11	0
Harper	2	2	0
Haskell	56	50	3
Hughes	20	18	0
Jackson	103	71	14
Jefferson	19	16	0
Johnston	6	5	0
Kay	95	71	3
Kingfisher	102	93	3
Kiowa	41	33	3
Latimer	18	14	1
Le Flore	187	172	12
Lincoln	126	98	21
Logan	84	61	1
Love	25	23	0



<b>County of Residence</b>	<b>Cases</b>	<b>Recovered**</b>	<b>Deaths</b>
Major	67	61	3
Marshall	13	12	0
Mayes	57	28	2
McClain	106	92	6
McCurtain	95	71	16
McIntosh	92	36	4
Murray	30	28	0
Muskogee	205	144	13
Noble	130	125	1
Nowata	49	49	0
Okfuskee	10	10	0
Oklahoma	1,573	1,344	143
Okmulgee	69	65	0
Osage	66	52	6
Ottawa	163	131	5
Pawnee	32	10	0
Payne	128	114	4
Pittsburg	181	154	15
Pontotoc	47	37	1
Pottawatomie	153	139	6
Pushmataha	41	37	4
Roger Mills	1	1	0
Rogers	356	260	40

County of Residence	Cases	Recovered**	Deaths
Seminole	97	89	3
Sequoyah	67	60	2
Stephens	108	81	3
Texas	66	55	4
Tillman	28	25	2
Tulsa	869	688	97
Wagoner	93	77	12
Washington	260	218	34
Washita	25	14	1
Woods	29	22	1
Woodward	54	48	3
<i>Total</i>	<i>8,687</i>	<i>7,063</i>	<i>685</i>

**\*\*Recovered:** *Currently not hospitalized or deceased and 14 days after onset/report.*

## COVID-19 LTC OR NURSING HOME ASSOCIATED CASES BY FACILITY

Status as of Midnight December 16, 2020

Data are preliminary and are subject to change as cases are processed.

Facility	Cases	Recovered**	Deaths
Aberdeen Heights Assisted Living Community	9	5	0
Aberdeen Memory Care of Tulsa	6	3	2
Accel at Crystal Park	28	16	6
Ada Care Center	3	2	0
Adams PARC Post Acute Recovery Center	98	83	13
Albert Hall	7	7	0
Ambassador Manor Nursing Center	21	12	3
Anadarko Nursing & Rehab	32	27	1
Antlers Manor	1	1	0
Arbor House Assisted Living Center - Norman	11	7	1
Arbor House Assisted Living Center of Mustang	33	28	2
Arbor House Reminisce	34	30	2
Arbor Village	8	8	0
Artesian Home	6	6	0
Ash Street Place	3	2	0
Ashbrook Village	5	4	0
Aspen Health and Rehab	9	7	0
Atoka Manor	62	45	1
Autumn Leaves of Edmond	34	30	4
Autumn Leaves of Southwest Oklahoma City	3	2	1

Facility	Cases	Recovered**	Deaths
Autumn Leaves of Tulsa	1	1	0
Avondale Cottage of Pryor	1	1	0
Avonlea Cottage of Seminole	15	14	0
Avonlea Cottage of Shawnee, LLC	9	8	0
Ayers Nursing Home	17	11	3
Ballard Nursing Center	24	20	1
Baptist Village of Hugo	59	56	1
Baptist Village of Oklahoma City	46	39	4
Baptist Village of Owasso	15	15	0
Barnsdall Nursing Home	2	2	0
Bartlesville Assisted Living	23	20	0
Bartlesville Health and Rehabilitation Community	103	79	20
Beacon Ridge	5	5	0
Beadles Nursing Home	25	19	1
Beare Manor	1	1	0
Beaver County Nursing Home	16	13	1
Belfair of McAlester	10	9	0
Belfair of Shawnee	1	1	0
Bell Avenue Nursing Center	18	16	2
Bellarose Senior Living	1	1	0
Bellevue Health and Rehabilitation	90	75	10
Betty Ann Nursing Center	3	2	0
Billings Fairchild Center, Inc	129	127	0

Facility	Cases	Recovered**	Deaths
Binger Nursing and Rehabilitation	56	45	10
Blue Ridge Place	1	1	0
Blue River Healthcare, Inc	1	1	0
Boyce Manor Nursing Home	13	12	0
Bradford Village Healthcare Center: Nursing Home	14	9	1
Brentwood Extended Care & Rehab	14	7	0
Broadway Living Center	2	1	0
Broadway Manor Nursing Home	39	28	4
Broken Arrow Assisted Living	6	5	1
Broken Arrow Nursing Home, Inc.	32	28	4
Broken Bow Nursing Home	56	41	11
Brookdale Bartlesville North	18	15	3
Brookdale Bartlesville South	9	9	0
Brookdale Broken Arrow	10	8	2
Brookdale Cedar Ridge	6	6	0
Brookdale Chickasha	19	16	3
Brookdale Claremore	3	2	0
Brookdale Durant	26	21	1
Brookdale Edmond Santa Fe	3	3	0
Brookdale Muskogee	19	9	5
Brookdale Norman	1	1	0
Brookdale Shawnee	1	1	0
Brookdale Stillwater	1	1	0

Facility	Cases	Recovered**	Deaths
Brookdale Tulsa 71st and Sheridan	65	51	12
Brookdale Tulsa Midtown	5	2	0
Brookdale Tulsa South	5	4	0
Brookdale Village	3	3	0
Brookdale Weatherford	8	1	0
Brookridge Retirement Community	5	2	0
Brookside Nursing Center	7	7	0
Brookwood Skilled Nursing and Therapy	5	3	1
Burford Manor	11	11	0
Callaway Nursing Home	10	6	0
Capitol Hill Skilled Nursing and Therapy	46	39	7
Carnegie Nursing Home, Inc.	39	31	3
Cedar Creek Nursing Center	10	7	0
Cedar Crest Manor	5	5	0
Cedarcrest Care Center	46	38	6
Center of Family Love	7	7	0
Chandler Therapy & Living Center, LLC	53	43	9
Checotah Nursing Center	3	1	0
Cherokee County Nursing Center	12	5	0
Chickasha Nursing Center, Inc	11	9	1
Chisholm Trail Assisted Living	7	6	0
Choctaw Nation Nursing Home	36	32	4
Cimarron Nursing Center	14	11	1

Facility	Cases	Recovered**	Deaths
Cimarron Pointe Care Center	24	19	1
Claremore Skilled Nursing and Therapy	11	10	0
Cleveland Manor Nursing & Rehab	10	3	0
Clinton Therapy & Living Center	1	1	0
Colonial Manor II	11	11	0
Colonial Manor Nursing Home	23	19	1
Colonial Park Manor, LLC	4	4	0
Colonial Terrace Care Center	3	3	0
Community Health Care of Gore	7	6	0
Community Health Center	10	9	1
Copp's Residential Care, Inc	1	1	0
Cordell Christian	6	6	0
Corn Heritage Village and Rehab	15	12	1
Corn Heritage Village and Rehab of Weatherford	36	28	4
Cottonwood Creek Skilled Nursing & Therapy	12	6	0
Country Club Care	19	12	0
Country Club at Woodland Hills	7	6	0
Country Lane	2	1	0
Country Place	1	1	0
Countryside Estates	3	3	0
Countrywood Assisted Living and Memory Care	12	9	0
Covenant Living at Inverness	12	10	1
Covenant Living of Bixby	1	1	0

Facility	Cases	Recovered**	Deaths
Coweta Manor Nursing Home	63	52	11
Creekside Village	2	2	0
Cross Timbers Nursing and Rehabilitation	46	41	3
Crossroads Residential Care	7	4	1
Dr W F & Mada Dunaway Manor	39	32	2
Drumright Nursing Home	11	11	0
Eastgate Village Retirement Center	55	46	2
Eastwood Manor	48	31	0
Edith Kassanavoid Gordon Assisted Living Center	1	1	0
Edmond Healthcare Center	45	36	8
EI Reno Post-Acute Rehabilitation Center	4	4	0
Elk City Nursing Center	8	5	0
Elk Crossing	21	15	2
Elkwood Assisted Living and Memory Care	25	22	1
Elmbrook Home	5	5	0
Elmwood Manor Nursing Home	11	11	0
Emerald Care Center Claremore	119	103	6
Emerald Care Center Midwest	25	21	2
Emerald Care Center Southwest LLC	51	48	2
Emerald Care Center Tulsa	10	9	0
Emerald Square Assisted Living Community	3	3	0
English Village Manor	40	23	5
Enid Senior Care	12	11	1



Facility	Cases	Recovered**	Deaths
Epworth Villa Health Services	17	16	1
Eufaula Manor Nursing and Rehabilitation Center	66	21	1
Fairfax Manor	9	6	0
Fairmont Skilled Nursing and Therapy	76	72	4
Fairview Fellowship Home for Senior Citizens, Inc	68	63	2
Family Care Center of Fairland	2	2	0
Family Care Center of Kingston	4	3	0
Featherstone Assisted Living Community of Moore	36	32	4
First Shamrock Care Center	3	3	0
Forest Hills Care and Rehabilitation Center	13	8	1
Forrest Manor Nursing Center	6	6	0
Fort Gibson Nursing Home	12	4	1
Fountain View Manor, Inc	6	6	0
FountainBrook Assisted Living and Memory Support	6	6	0
Four Seasons Rehabilitation & Care	6	5	0
Franciscan Villa	102	89	12
Garland Road Nursing and Rehab Center	7	6	0
Gatesway Foundation, Inc	3	3	0
Glade Avenue Assisted Living	2	2	0
Glade Avenue South	6	2	2
Glenhaven Retirement Village	22	20	2
Glenwood Healthcare	17	13	4
Go Ye Village Continuum of Care Retirement Community	5	2	1

Facility	Cases	Recovered**	Deaths
Golden Age Nursing Home of Guthrie, LLC	66	44	1
Golden Oaks Village	28	22	5
Grace Living Center - Clinton	5	4	0
Grace Living Center - Jenks	20	14	4
Grace Living Center - Norman	88	73	12
Grace Living Center - Stillwater	12	10	0
Grace Living Center - Tahlequah East Shawnee	1	1	0
Gracewood Health and Rehab	42	32	6
Gran Grans Place	1	1	0
Grand Lake Villa	31	19	6
Grandwood Assisted Living, LC	36	31	3
Green Country Care Center	19	16	3
Green Country Village Assisted Living Center	4	3	0
Green Tree at Sand Springs	1	1	0
Greenbrier Nursing Home	10	9	0
Greenbrier Village Residential Living, LLC	2	2	0
Gregston Nursing Home, Inc.	8	7	0
Grove Nursing Center	82	66	16
Harrah Nursing Center	44	39	3
Haskell County Nursing Center, Inc	52	46	3
Hays House	36	36	0
Heartsworth Center for Nursing and Rehabilitation	29	20	2
Heartsworth House Assisted Living	1	1	0

Facility	Cases	Recovered**	Deaths
Heatheridge Residential Care Center	1	1	0
Heavener Nursing & Rehab	52	43	7
Hennessey Nursing & Rehab	75	73	2
Henryetta Community Skilled Healthcare & Rehab	3	3	0
Hensley Nursing & Rehab	30	27	2
Heritage Assisted Living	3	3	0
Heritage Community	28	24	2
Heritage Hills Living & Rehabilitation Center	1	1	0
Heritage Manor	29	28	1
Heritage Park	5	5	0
Heritage Point of Tulsa	1	1	0
Heritage Villa Nursing Center	13	12	0
Heritage Village Nursing Home	6	3	0
Heritage at Brandon Place Health and Rehabilitation	52	42	4
High Cedar Residential Care	1	0	0
Higher Call Nursing Center	6	0	0
Highland Park Health Care	6	6	0
Hill Nursing Home, Inc	15	13	1
Hillcrest Manor Nursing Center	3	1	0
Hillcrest Nursing Center	19	18	1
Hobart Nursing & Rehab	20	18	1
Holiday Heights Nursing Home	7	4	1
Homestead Residential Care	1	0	0

Facility	Cases	Recovered**	Deaths
Homestead of Bethany, LLC	8	7	0
Homestead of Hugo	20	19	0
Homestead of Owasso	1	1	0
Ignite Medical Resort Norman, LLC	45	33	6
Ignite Medical Resort OKC	96	85	11
Iris Memory Care of Edmond	6	6	0
Jan Frances Care Center	8	3	0
John H. Johnson Care Suites	3	3	0
Kenwood Manor	19	17	1
Kingwood Skilled Nursing and Therapy	3	1	0
Lake Country Nursing Center	27	25	0
Lake Drive Care and Rehabilitation Center	39	39	0
Lakeland Manor, Inc	9	7	1
Lakeview Nursing & Rehab	18	13	2
Landmark of Midwest City Rehabilitation and Nursing	41	34	4
Lane Nursing & Ventilator Care	2	1	0
Latimer Nursing Home	1	0	0
Legacy Village of Stillwater	15	15	0
Legend at 71st St	8	6	1
Legend at Council Road	5	5	0
Legend at Mingo Road	4	4	0
Legend at Rivendell	56	49	5
Leisure Village Health Care Center	15	10	0

Facility	Cases	Recovered**	Deaths
Lexington Nursing Home	10	10	0
Liberty Place	1	1	0
Lindsay Nursing & Rehab	6	5	0
Linwood Village Nursing & Retirement Apts	14	14	0
Lyndale at Edmond	2	2	0
Magnolia Creek Skilled Nursing and Therapy	37	25	7
Mangum Skilled Nursing and Therapy	54	45	6
Maple Lawn Nursing and Rehabilitation	19	16	1
Maplewood Care Center	11	9	0
Marlow Nursing & Rehab	13	7	0
McAlester Nursing & Rehab	40	30	1
McCall's Chapel School, Inc #11	2	2	0
McCall's Chapel School, Inc #13	1	1	0
McCall's Chapel School, Inc #4	1	1	0
McCall's Chapel School, Inc #7	1	1	0
McCall's Chapel School, Inc #8	1	1	0
McCall's Chapel School, Inc #9	1	1	0
McLoud Nursing Center	3	3	0
McMahon-Tomlinson Nursing Center	20	15	2
Meadow Brook Residential Care	26	25	0
Meadowbrook Nursing Center	6	1	0
Meadowlake Estates	78	72	4
Meadowlakes Retirement Village	1	1	0

Facility	Cases	Recovered**	Deaths
Medical Park West Rehabilitation	7	4	2
Medicallodges Dewey	4	4	0
Meeker Nursing Center	44	28	11
Memorial Heights Nursing Center	24	17	4
Memorial Nursing Center	25	23	1
Memory Care Center at Emerald	4	3	0
Meridian Nursing Home	4	4	0
Miami Nursing Center, LLC	79	73	3
Mid-Del Skilled Nursing and Therapy	25	22	0
Mitchell Manor	51	49	2
Monroe Manor	11	9	0
Montereau, Inc Assisted Living	3	3	0
Montereau, Inc LTC/SNF	5	5	0
Montevista Rehabilitation and Skilled Care	8	3	1
Mooreland Heritage Manor	20	19	0
Muscogee (Creek) Nation Skilled Nursing Facility	1	1	0
Muskogee Nursing Center	13	7	0
New Hope Retirement & Care Center	1	1	0
Noble Health Care Center	13	12	0
North County Assisted Living	2	2	0
North County Center for Nursing and Rehabilitation	3	1	1
North Winds Living Center	1	1	0
Northhaven Place	10	8	1

Facility	Cases	Recovered**	Deaths
Northwest Nursing Center	2	2	0
Oak Hills Living Center	15	14	1
Oakridge Home	1	1	0
Oakridge Nursing Center	54	43	5
Okemah Care Center	1	1	0
Oklahoma Methodist Manor	22	14	2
Oklahoma Veterans Center, Ardmore Division	4	1	0
Oklahoma Veterans Center, Claremore Division	211	131	35
Oklahoma Veterans Center, Clinton Division	111	56	7
Oklahoma Veterans Center, Lawton-Ft. Sill Division	17	15	0
Oklahoma Veterans Center, Norman Division	76	50	21
Oklahoma Veterans Center, Sulfur Division	14	14	0
Oklahoma Veterans Center, Talihina Division	24	19	3
Osage Nursing Home, LLC	4	4	0
Oxford Glen at Owasso	13	6	0
Perry Green Valley Nursing Center, LLC	7	5	1
Pleasant Valley Health Care Center	7	7	0
Pocola Health & Rehab	56	53	3
Ponca City Nursing and Rehabilitation	19	16	0
Prairie House Assisted Living & Memory Care	6	3	0
Prairie Pointe at Stroud	10	10	0
Primrose Retirement Community of Shawnee	11	10	0
Primrose Retirement Community of Stillwater	3	3	0

Facility	Cases	Recovered**	Deaths
Providence House	1	0	0
Providence Place	1	1	0
Purcell Care Center, LLC	13	8	1
Quail Creek Senior Living	23	18	4
Quail Ridge Living Center, Inc (Colcord, OK)	17	10	0
Quail Ridge Senior Living	24	17	6
Quinton Manor Nursing Home	10	10	0
RT 66 Residential Care Home, LLC	6	5	0
Rainbow Health Care Community: Nursing Home	66	56	4
Rambling Oaks (Norman)	24	19	2
Rambling Oaks Courtyard Assisted Living & Memory Care	4	4	0
Ranch Terrace Nursing Home	21	18	2
Ranchwood Nursing Center	30	29	1
Reliant Living Center	11	8	0
Reliant Living Center of Del City	2	2	0
River Oaks Skilled Nursing	41	39	1
Riverside Health Services LLC	3	3	0
Robert M Greer Center	1	1	0
Rolling Hills Care Center	22	19	0
Ruth Wilson Hurley Manor	70	61	3
Saint Simeons Episcopal Home	17	17	0
Sand Plum Assisted Living Community	2	1	0
Sand Springs Nursing and Rehabilitation	5	5	0



Facility	Cases	Recovered**	Deaths
Seiling Nursing Center	7	4	1
Seminole Care and Rehabilitation Center	74	67	3
Seminole Pioneer Nursing Home	1	1	0
Senior Star The Brook	3	3	0
Senior Suites Healthcare	9	6	1
Senior Village	9	6	0
Sequoyah East Nursing Center, LLC	13	13	0
Sequoyah Manor	39	36	1
Sequoyah Pointe Living Center	14	12	0
Shady Rest Care Center	24	5	0
Shanoan Springs Nursing and Rehabilitation	53	47	3
Share Medical Center	2	2	0
Shattuck Nursing Center	4	4	0
Shawn Manor Nursing Home	1	1	0
Shawnee Care Center	3	1	0
Shawnee Colonial Estates Nursing Home	68	62	6
Sherwood Manor Nursing Home	4	1	0
Sienna Extended Care & Rehab	36	35	1
Skiatook Nursing Home	42	34	6
Sommerset Neighborhood	1	1	0
South Park East	44	39	1
South Pointe Rehabilitation and Care Center	170	147	13
Southbrook Healthcare, Inc.	4	2	1

Facility	Cases	Recovered**	Deaths
Southern Hills Rehabilitation Center	74	63	10
Southern Oaks Care Center	20	3	0
Southern Plaza Assisted Living and Memory Care	27	25	0
Southern Pointe Living Center	40	31	5
Spanish Cove Housing Authority	9	9	0
Spiro Nursing Home, Inc.	34	34	0
St. Ann's Skilled Nursing and Therapy	82	67	14
St. Katharine Drexel Retirement Center	7	6	0
Storey Oaks	48	46	0
Stroud Health Care Center South	6	6	0
Summers Healthcare, LLC	7	6	0
Sunset Estates of Purcell	67	63	4
Tamarack Retirement Center	18	14	2
Teal Creek Assisted Living & Memory Care	3	3	0
Tealridge Assisted Living	9	8	0
Temple Manor Nursing Home	42	36	3
Ten Oaks Place	4	3	0
The Arbors Assisted Living Center	7	6	0
The Brentwood Senior Living	18	12	1
The Chateau	10	8	1
The Commons	42	41	0
The Commons - AL	1	1	0
The Cottage Extended Care	10	8	1

Facility	Cases	Recovered**	Deaths
The Courtyards at Claremore Assisted Living	7	5	1
The Courtyards at Magnolia Creek	9	9	0
The Fountains at Canterbury Health Center	29	24	1
The Gardens	1	1	0
The Gardens at Rivermont	1	1	0
The Golden Rule Home	43	41	0
The Grand at Bethany Skilled Nursing and Therapy	3	3	0
The Health Center at Concordia	27	23	1
The Health Center at Concordia ALC	7	7	0
The Heaven House Elmwood	1	1	0
The Highlands at Owasso	17	11	1
The King's Daughters & Sons Nursing Home	10	10	0
The Lakes	8	6	1
The Linden at Stonehaven Square	10	5	4
The Living Center	30	25	3
The Mansion at Waterford	21	19	2
The Neighborhoods at Baptist Village of Ada	1	1	0
The Neighborhoods at Baptist Village of Elk City	7	7	0
The Oaks Healthcare Center	3	3	0
The Parke Assisted Living	3	3	0
The Regency Skilled Nursing and Therapy	4	4	0
The Renaissance of Stillwater - Assisted Living	3	3	0
The Springs Skilled Nursing and Therapy	32	24	1

Facility	Cases	Recovered**	Deaths
The Timbers Skilled Nursing and Therapy	61	47	8
The Veraden	2	1	0
The Villages at Southern Hills	74	59	12
The Willows	1	1	0
The Wilshire Skilled Nursing and Therapy	3	3	0
The Wolfe Living Center at Summit Ridge	12	9	1
Timberwood Assisted Living & Memory Care	1	1	0
Touchmark at Coffee Creek	5	5	0
Town of Vici Nursing Home	3	2	0
Tulsa Assisted Living and Memory Care	3	3	0
Tulsa Nursing Center	29	26	1
Tuscany Village Nursing Center	22	19	1
Tuttle Care Center	22	20	2
University Park Skilled Nursing & Therapy	42	21	0
University Village	26	23	2
Via Christi Village Ponca City	34	17	0
Vian Nursing & Rehab, LLC	9	6	1
Victorian Estates	2	2	0
Village Health Care Center	11	11	0
Village Lodge of Ardmore Village	3	2	0
Village at Oakwood	5	4	1
Village on the Park	38	31	6
Wagoner Health & Rehab	6	6	0

Facility	Cases	Recovered**	Deaths
Walnut Grove Living Center	67	53	12
Warr Acres Nursing Center	18	16	1
Washita Valley Living Center	4	3	0
Weatherwood Assisted Living and Memory Care	4	4	0
Wellington Parke, LLC	2	2	0
West Wind Assisted Living	14	12	1
Westbrook Gardens	6	5	1
Westbrook Healthcare, Inc	16	13	0
Westhaven Nursing Home	76	69	2
Westview Cottages	4	4	0
Wewoka Healthcare Center	2	2	0
Wildewood Skilled Nursing and Therapy	5	4	1
Wilkins Health and Rehabilitation Community	17	12	0
Willow Creek Health Care	1	0	0
Willow Haven Nursing Home	28	24	3
Willow Park Health Care Center	23	11	4
Willowood at Mustang Assisted Living and Memory Care	3	3	0
Windridge Nursing and Rehabilitation Center	14	11	2
Windsor Hills Nursing Center	4	3	1
Woodland Park Home, Inc	5	4	0
Woodlands Skilled Nursing & Therapy	2	1	0
Woodward Skilled Nursing and Therapy	31	27	3
York Manor Nursing Home	12	8	1

Facility	Cases	Recovered**	Deaths
Zarrow Pointe	10	6	1
<i>Total</i>	<i>8,687</i>	<i>7,063</i>	<i>685</i>

**\*\*Recovered:** *Currently not hospitalized or deceased and 14 days after onset/report.*

## **ACKNOWLEDGEMENT**

The weekly report is made by possible through the efforts of county and city public health and healthcare professionals.

---

## **NOTES**

Every effort is made to ensure accuracy and the data is up-to-date for the time period reported.

For daily updates on COVID-19, please visit <https://coronavirus.health.ok.gov/>

---

## **DISCLAIMER**

The purpose of publishing aggregated statistical COVID-19 data through the OSDH Dashboard, the Executive Order Report, and the Weekly Epidemiology and Surveillance Report is to support the needs of the general public in receiving important and necessary information regarding the state of the health and safety of the citizens of Oklahoma. These resources may be used only for statistical purposes and may not be used in any way that would determine the identity of any reported cases.