

OKLAHOMA COVID-19 WEEKLY REPORT

Weekly Epidemiology and Surveillance Report
January 8 - 14, 2021



PURPOSE To provide up-to-date weekly epidemiological data on COVID-19 in Oklahoma.

SNAPSHOT

	Jan 8 – Jan 14	Change ¹	Total
Cases	29,152	19.4%	344,506
Recovered cases ²	25,648	16.7%	302,476
Deaths	210	14.8%	2,882

1. Change from the week of Jan 1- Jan 7, 2020.

2. Currently not hospitalized or deceased and 14 days after onset/report.

KEY POINTS

- **29,152** cases were reported in the past week
19.4% increase from the week before (Jan 1 – Jan 7)
- **210** deaths were reported in the past week
14.8% increase from the week before (Jan 1 – Jan 7)
- **19,460 (5.6%)** cases have been hospitalized
- **2,928,413** specimens have been tested in total
- **197,820** vaccine doses have been administered in total

CASES		DEATHS	
Persons aged 50 and over	Females	Persons aged 50 and over	Males
34%	53%	95%	57%
of <u>cases</u>	of <u>cases</u>	of <u>deaths</u>	of <u>deaths</u>

The average age of cases was **41** years.

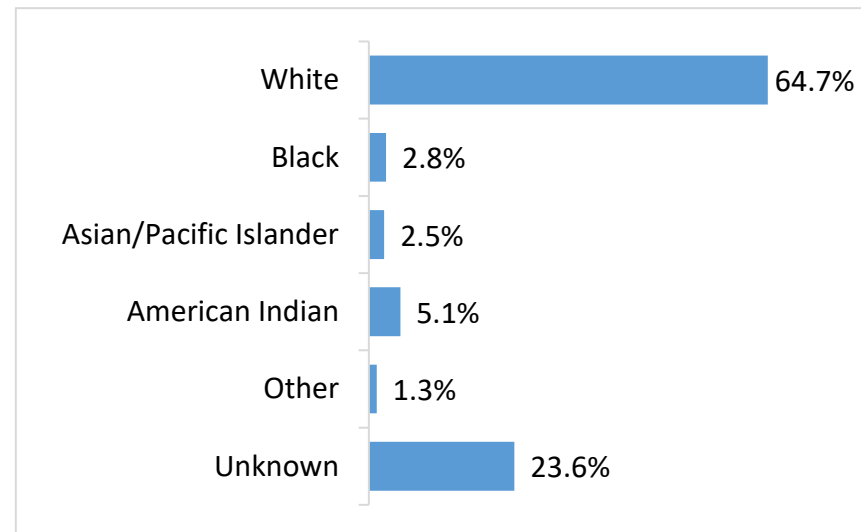
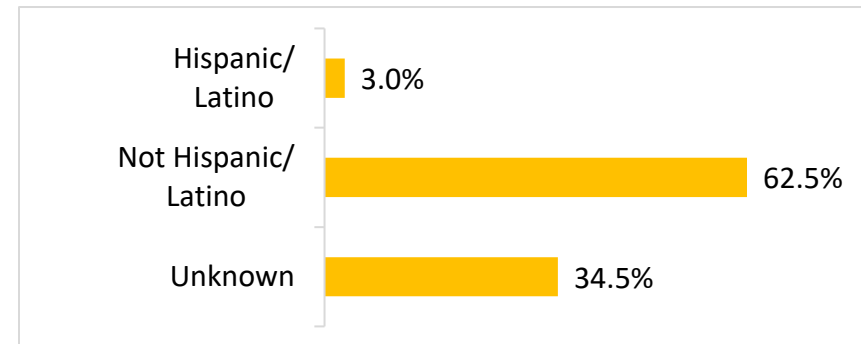
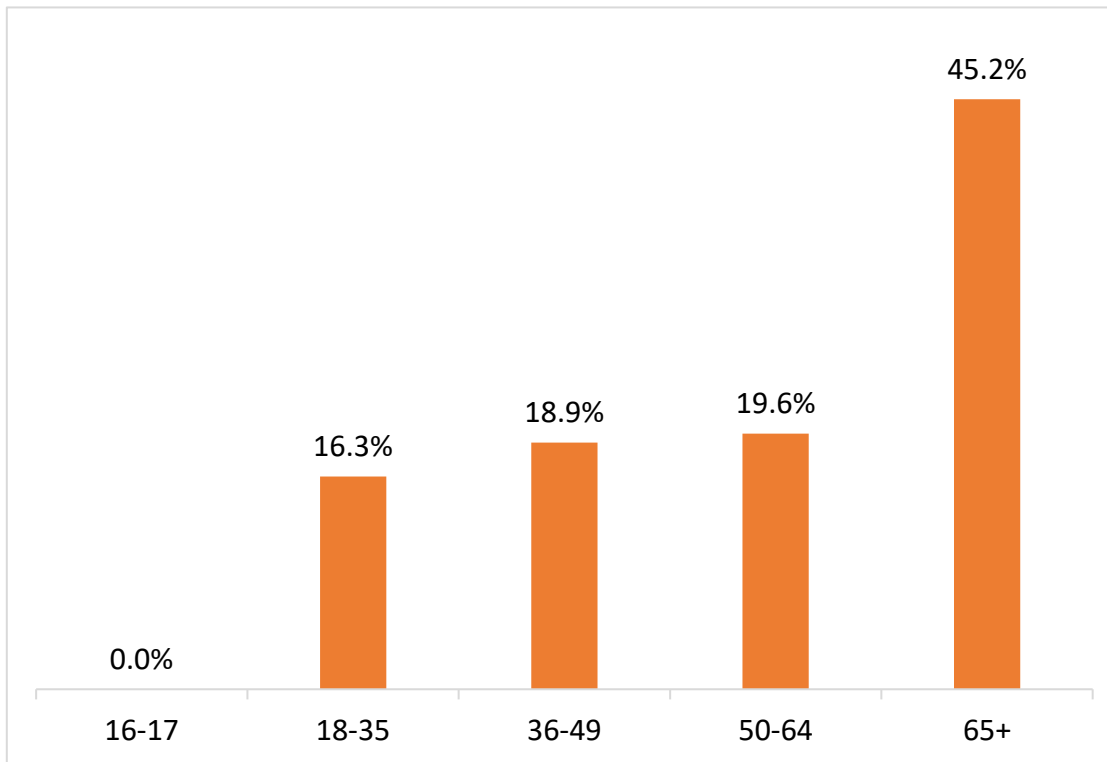
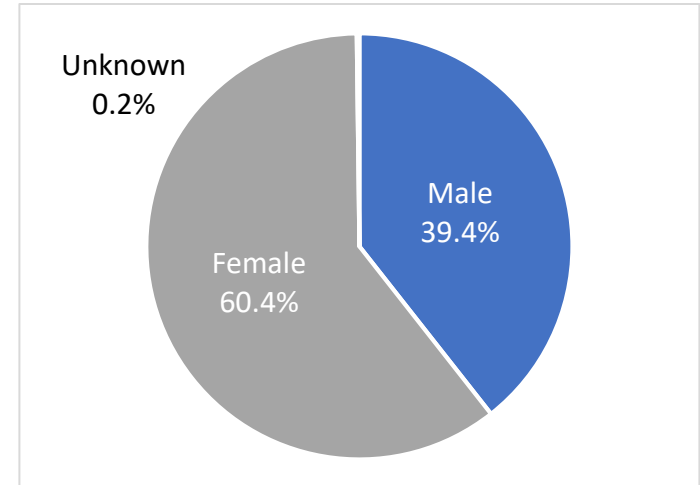
The youngest case was **less than a year old** and the oldest case was **100+ years**.

The average age of individuals who died was **75** years.

The youngest individual to die from COVID-19 was **less than 15 years** and the oldest was **100+ years**.

COVID- 19 VACCINE DATA BY TOTAL AND KEY METRICS

	Jan 8 – Jan 14	Total Number
Doses Allocated	46,300	310,300
Doses Administered	98,447	197,820
- Prime	74,710	169,411
- Boost	23,737	28,409



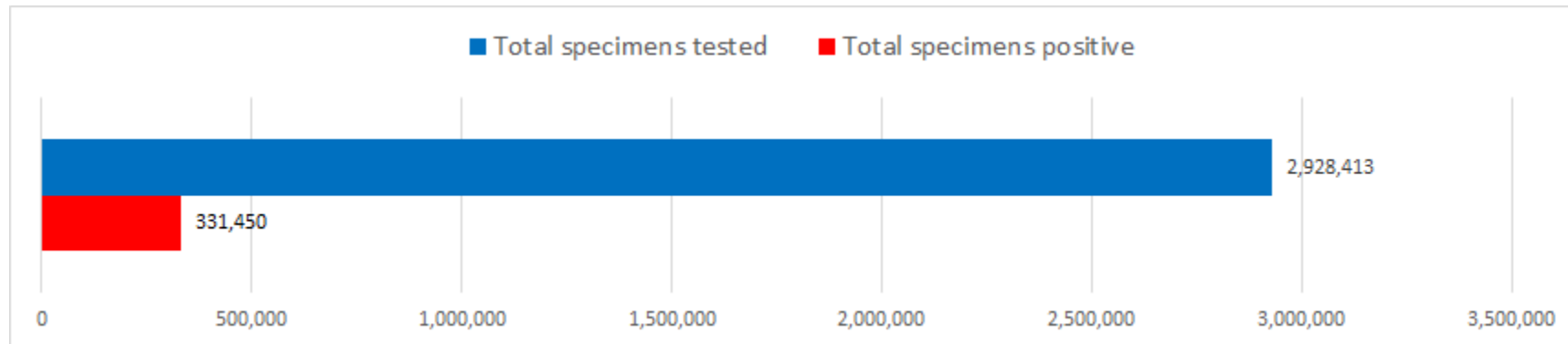
Source: COVID-19 Vaccination Reporting Specification Dataset
 Oklahoma State Immunization Information System (OSIIS)
 Data reflect information entered as of 11:59PM 01/13/2021

DISEASE TESTING

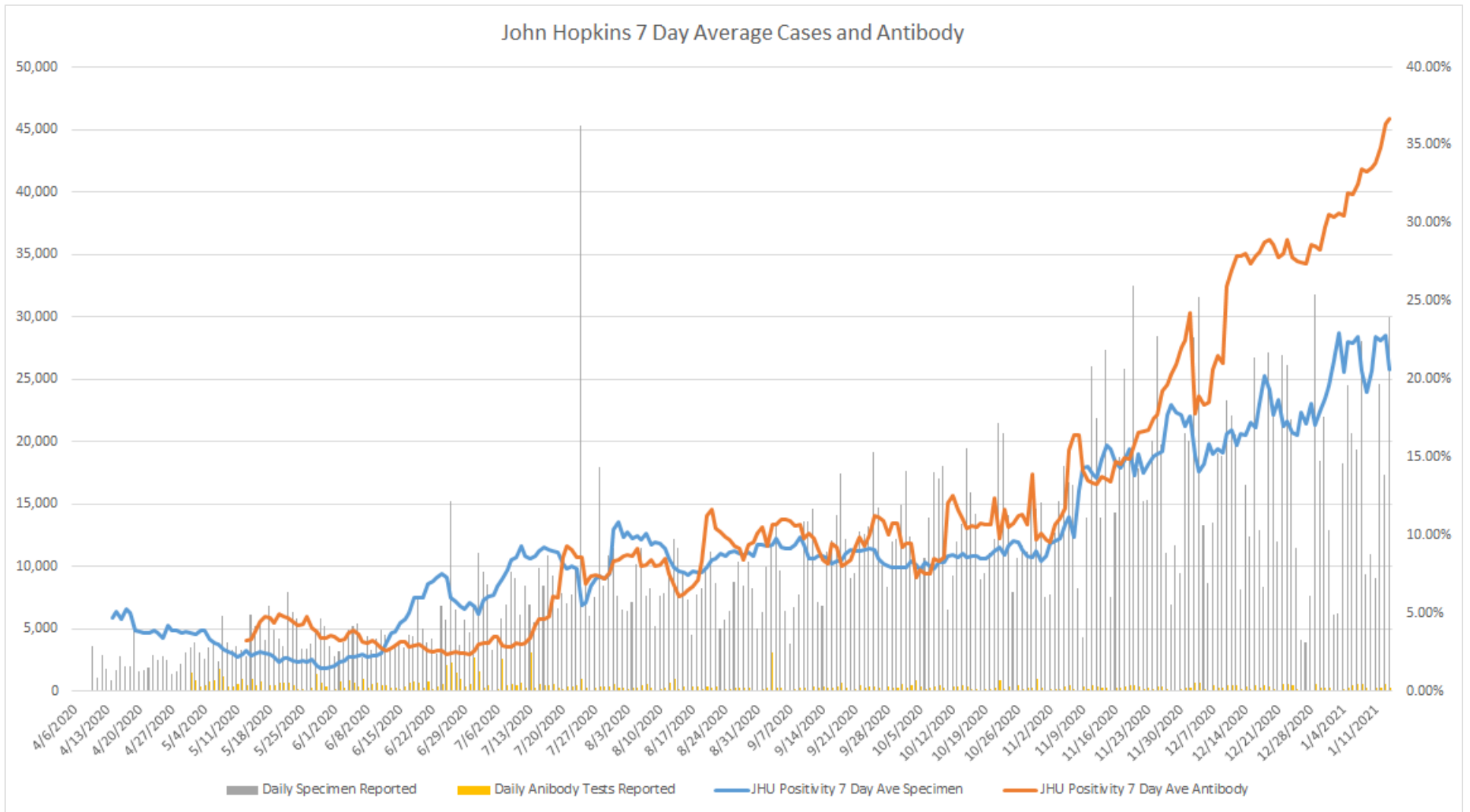
	Jan 8 – Jan 14	Total Number
Specimens tested, count	129,341	2,928,413
Specimens positive, count	18,400	331,450
Percent positive	14.2%	11.3%
Johns Hopkins positivity %	20.6%	11.7%
Antibody tested, count	2,208	111,630
Antibody positive, count	819	10,335
Antibody percent positive	37.1%	9.3%

Source: This data is obtained outside of individual case data reported to the OSDH Acute Disease Service and comes from a daily survey of state and private laboratories and facilities that are performing Covid-19 testing.

Note: Specimen counts may not reflect unique individuals.



JOHNS HOPKINS 7 DAY AVERAGE POSITIVITY RATE FOR SPECIMEN AND ANTIBODY CASES

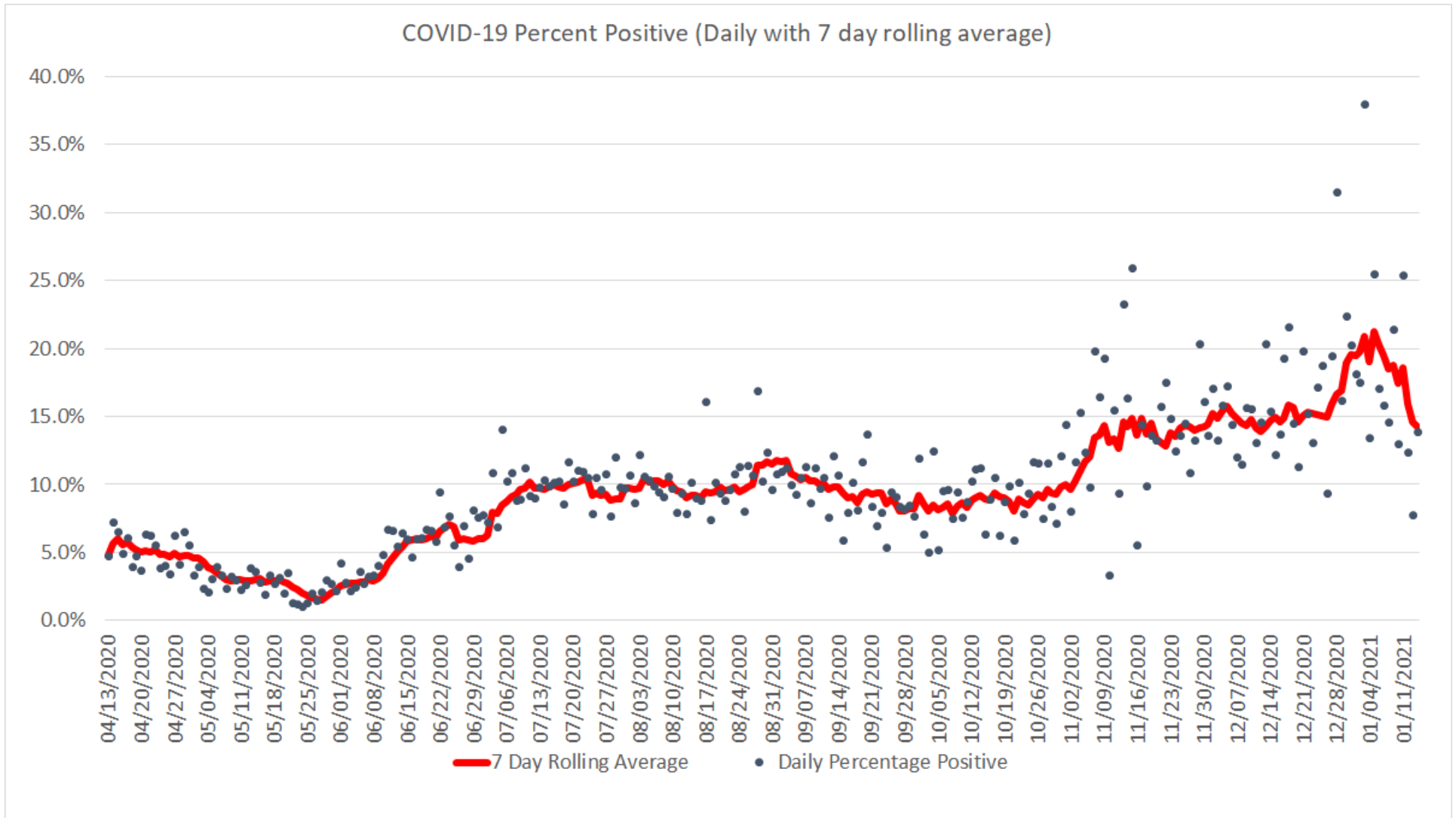


Oklahoma, January 14, 2021

Source: This data is obtained outside of individual case data reported to the OSDH Acute Disease Service and comes from a daily survey of state and private laboratories and facilities that are performing Covid-19 testing.

Note: On July 24, 2020 fourteen labs began reporting to OSDH that had been testing since May 18, 2020.

COVID-19 TESTS DAILY PERCENT POSITIVE WITH 7 DAY ROLLING AVERAGE



Oklahoma, January 14, 2021

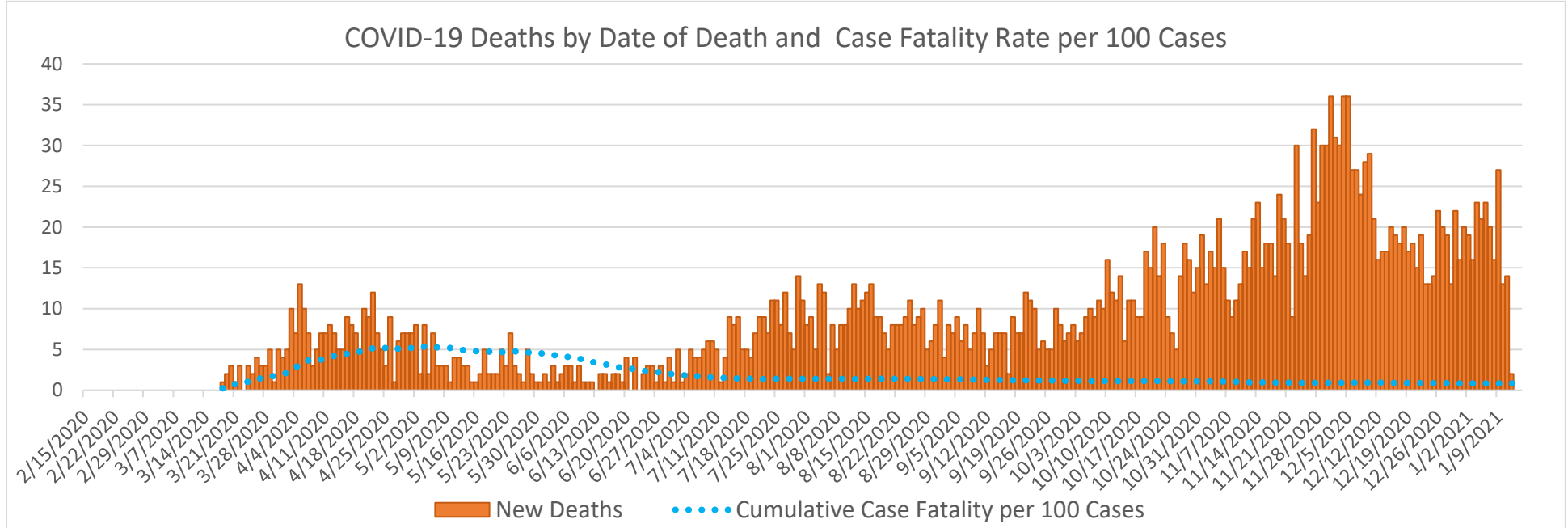
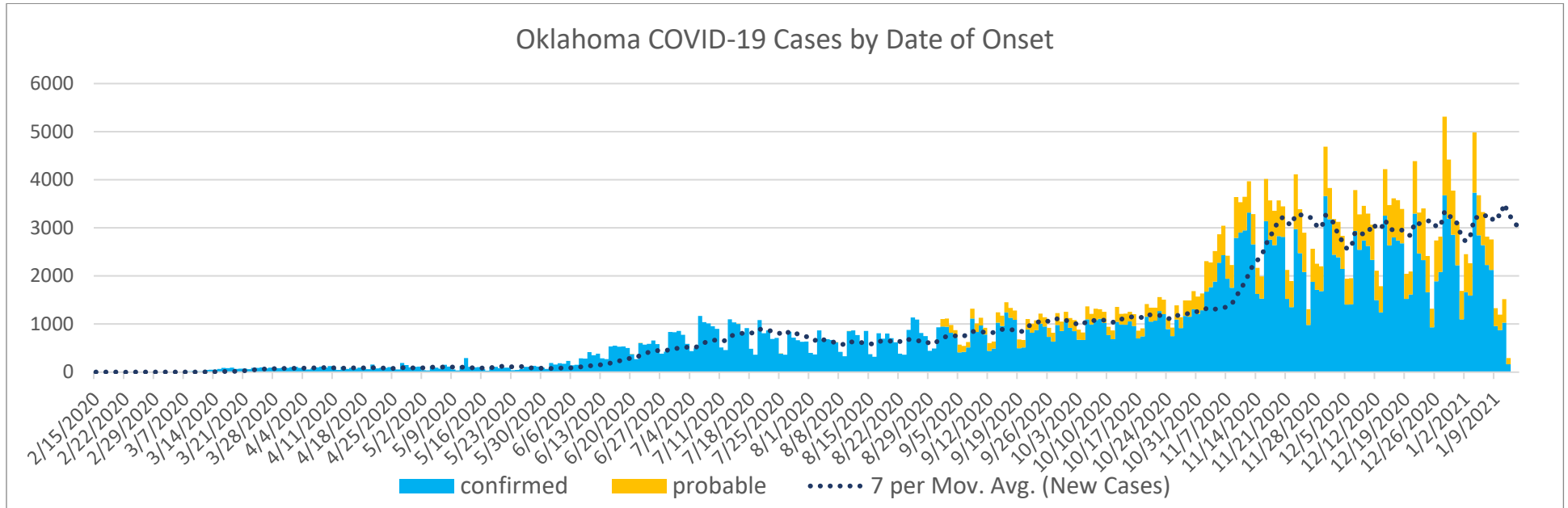
Source: This data is obtained outside of individual case data reported to the OSDH Acute Disease Service and comes from a daily survey of state and private laboratories and facilities that are performing Covid-19 testing.

EPIDEMIOLOGICAL ESTIMATES

	Estimate	Notes / Interpretation
Cases		
Cumulative incidence*	8,737.0 (per 100,000 persons)	From March 7, 2020 to January 14, 2021 there were about 8,737 (per 100,000) new cases of COVID-19 in Oklahoma.
Absolute change in cumulative incidence from previous week	120.1 (per 100,000 persons)	Compared to January 1 – January 7 there were 120 (per 100,000) more cases of COVID-19 reported in Oklahoma during the past week (Jan 8– Jan 14).
Disease Severity		
Case-fatality risk (crude)	0.8%	The estimate is not adjusted for the lag time from reporting to death (i.e., delay between the time someone dies and the time their death is reported). The fatality estimate could be lower due to cases that were undiagnosed or had milder symptoms.
Cumulative Hospitalization rate (overall)	493.5 (per 100,000 persons)	About 493 people per 100,000 have ever been hospitalized for COVID-19 during this outbreak.

CASES AND DEATHS

New cases (by date of onset) and new deaths (by date of death) of COVID-19 in Oklahoma, February 2020–January 2021



Please note the different axes for new cases (top—from 0 to 6,000 for new cases) and new deaths (bottom—from 0 to 40 for new deaths). Additionally, a 7-day lag has been applied to the trend line based on information collected to-date for 7/19 and 7/25 where within 7 days of onset date approximately 80% of the cases had been reported.

DEMOGRAPHIC INFORMATION AS OF JANUARY 14, 2021

		Cases count (%) ¹		Deaths count (%) ^{1,3}		Cumulative Incidence Rate ²	Cumulative Mortality Rate ²
Oklahoma		344,506		2882		8,737.0	73.1
Gender							
	Male	162,120	(47.1)	1638	(56.8)	8,300.9	83.9
	Female	182,386	(52.9)	1244	(43.2)	9,165.0	62.5
	Unknown	0	(0.0)	0	(0.0)		
Age group							
	Under 1- 4	6,391	(1.9)	0	(0.0)	2,454.0	0.0
	5-14	22,483	(6.5)	1	(0.0)	4,179.7	0.2
	15-24	60,312	(17.5)	3	(0.1)	11,214.0	0.6
	25-34	57,125	(16.6)	21	(0.7)	10,516.0	3.9
	35-44	55,299	(16.1)	43	(1.5)	11,276.6	8.8
	45-54	48,921	(14.2)	146	(5.1)	10,627.8	31.7
	55-64	43,448	(12.6)	375	(13.0)	8,805.1	76.0
	65-74	28,810	(8.4)	746	(25.9)	8,033.0	208.0
	75-84	15,022	(4.4)	816	(28.3)	8,002.7	434.7
	85+	6,693	(1.9)	731	(25.4)	9,143.9	998.7
	Unknown	2	(0.0)				
Race							
	American Indian or Alaska Native	33,914	(9.8)	254	(8.8)	11,040.3	82.7
	Asian or Pacific Islander	6,297	(1.8)	43	(1.5)	7,111.0	48.6
	Black or African American	18,586	(5.4)	180	(6.2)	6,460.7	62.6
	Multiracial/Other	11,407	(3.3)	84	(2.9)	2,756.9	20.3
	White	195,688	(56.8)	2072	(71.9)	6,876.1	72.8
	Unknown	78,614	(22.8)	249	(8.6)		
Ethnicity							
	Hispanic or Latino	35,944	(10.4)	159	(5.5)	8,377.0	37.1
	Not Hispanic or Latino	211,194	(61.3)	2352	(81.6)	6,010.1	66.9
	Unknown/Other	97,368	(28.3)	371	(12.9)		

1. Percentages may not add up to 100 due to rounding.

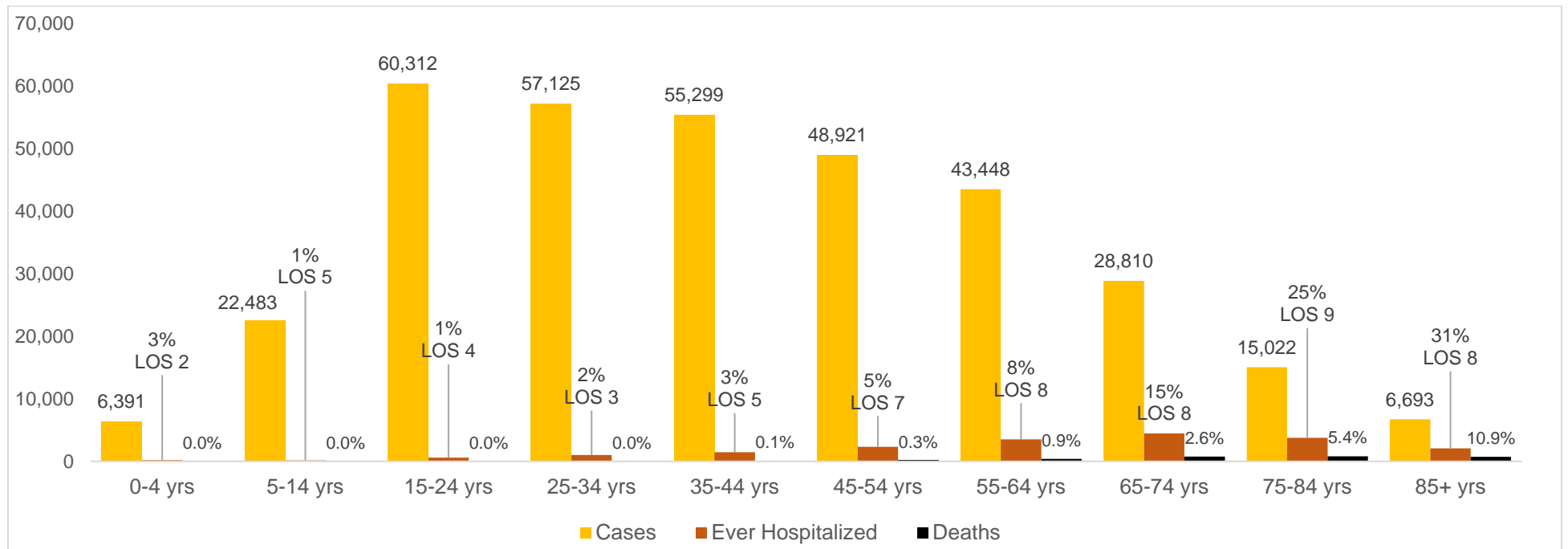
2. Rate per 100,000 population

3. One death was previously misidentified as occurring in the under 1-4 age group within the December 24th Weekly Epi Report, this has been corrected.

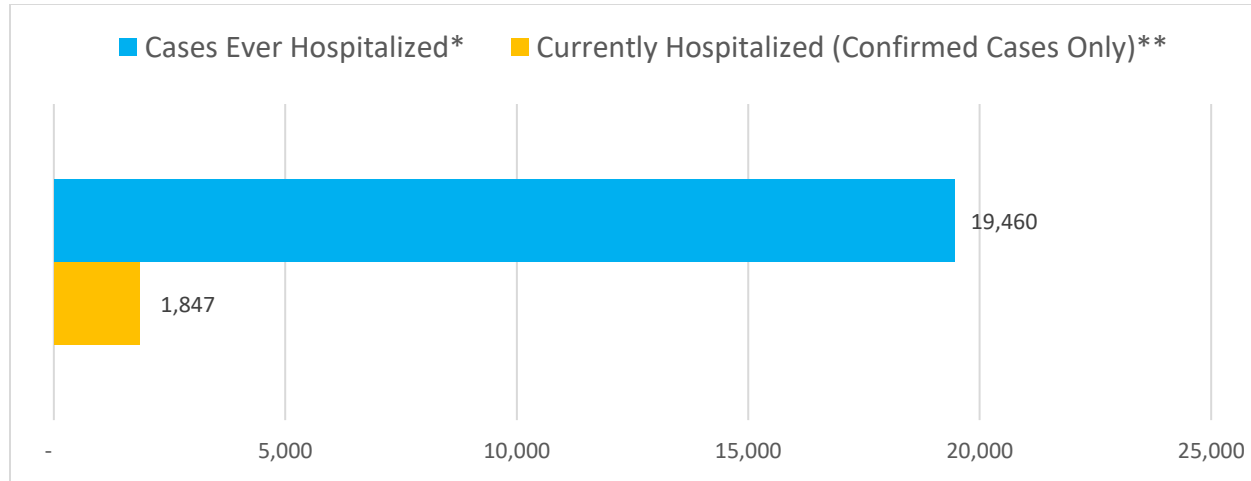
AGE DISTRIBUTION OF NEW CASES/DEATHS FROM JANUARY 8 - JANUARY 14

Age group	New Cases	Percentage	New Deaths	Percentage
Under 1- 4	606	2.1%	0	0.0%
5-14	2,006	6.9%	0	0.0%
15-24	4,858	16.7%	0	0.0%
25-34	4,798	16.5%	1	0.5%
35-44	4,536	15.6%	4	1.9%
45-54	4,078	14.0%	18	8.6%
55-64	3,955	13.6%	37	17.6%
65-74	2,531	8.7%	47	22.4%
75-84	1,294	4.4%	63	30.0%
85+	490	1.7%	40	19.0%

CUMULATIVE CASES, PERCENT HOSPITALIZED, AVERAGE LENGTH OF STAY (NOV CASES) AND DEATHS BY AGE GROUP



HOSPITALIZATIONS



19,460 Ever Hospitalized Cases (includes discharged, deceased, currently hospitalized and recovered).

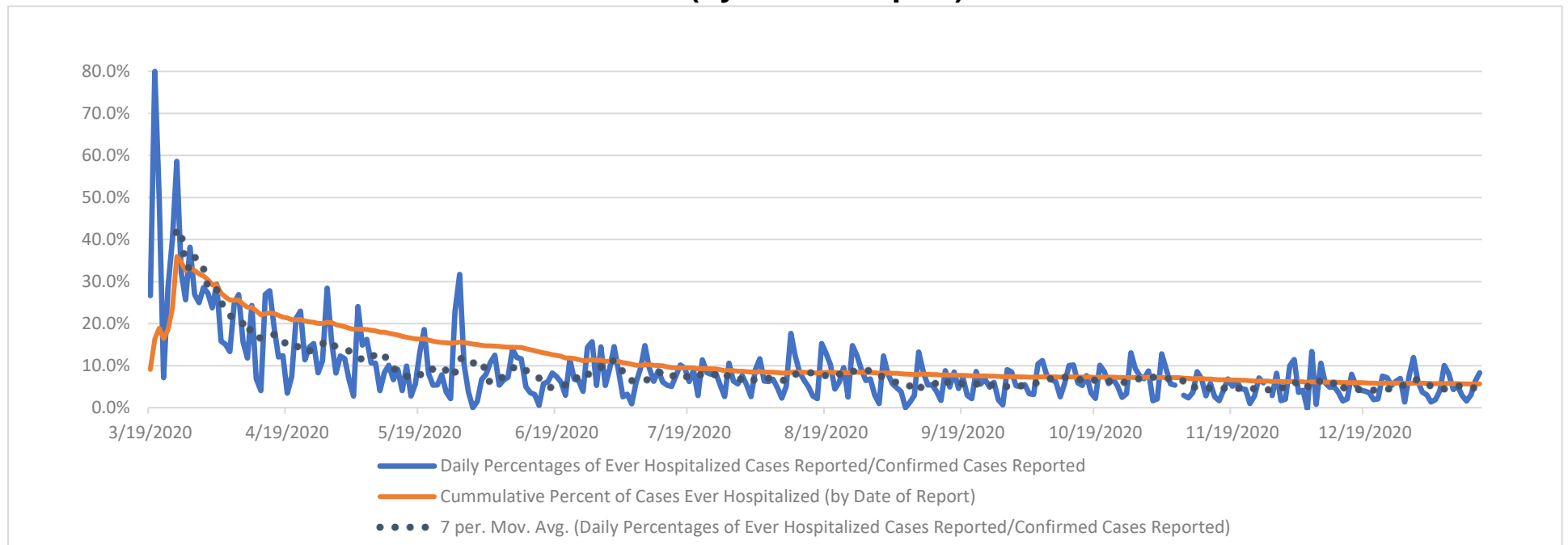
Average age of cases hospitalized: **62.6**

Average age of cases not hospitalized: **39.6**

*Ever hospitalized includes discharged, deceased, currently hospitalized and recovered as of 1/14/2021.

**Source OSDH Beds Survey. Note, facility response rate of 94% on 1/14/2021. This total reflects all cases as reported by Acute, Focus, Rehabilitation and Tribal facilities that responded to the survey on this date.

PERCENT OF CASES EVER HOSPITALIZED (by date of report)



Source: OSDH Acute Disease Registry

.....

AT-RISK SETTINGS HEALTHCARE & NON-HEALTHCARE

Status	Non-Healthcare Worker count (%)	Healthcare Worker count (%)
Active	37,585 (11.4)	563 (4.2)
Deceased	2,855 (0.9)	27 (0.2)
Recovered	290,761 (87.8)	12,715 (95.6)
Total	331,201	13,305

CORRECTIONAL FACILITIES¹

	Cases (%)	Deaths (%)
Inmates	4,148 (77.4)	32 (91.4)
Staff	1,212 (22.6)	3 (8.6)
Total	5,360	35

¹Correctional facilities include prisons, jails, and juvenile detention center

LONG TERM CARE (LTC) FACILITIES²

	Cases (%)	Deaths (%)
Residents	6,839 (62.7)	841 (99.2)
Staff	4,063 (37.3)	7 (0.8)
Total	10,902	848

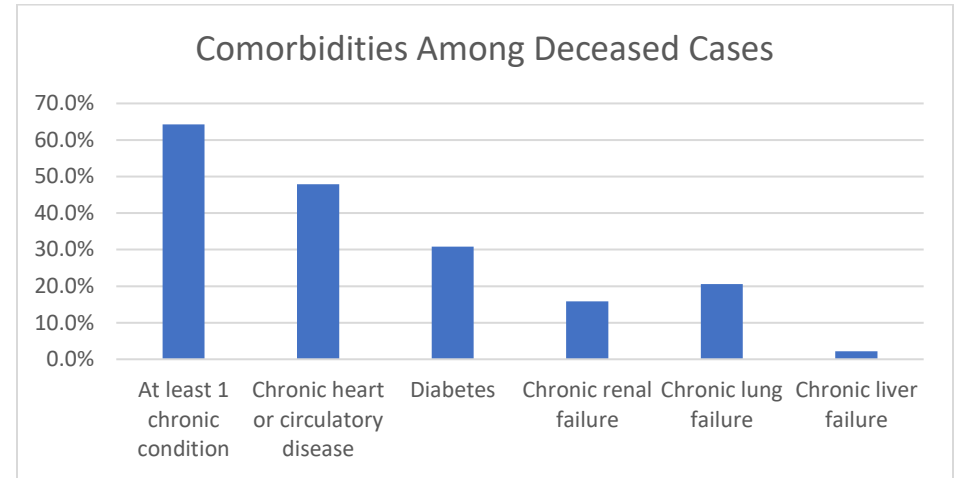
²Long term care facility or nursing home.

Detailed counts of LTC Cases by County and Facility can be found at the end of this report.

COMORBIDITIES AMONG DECEASED CASES

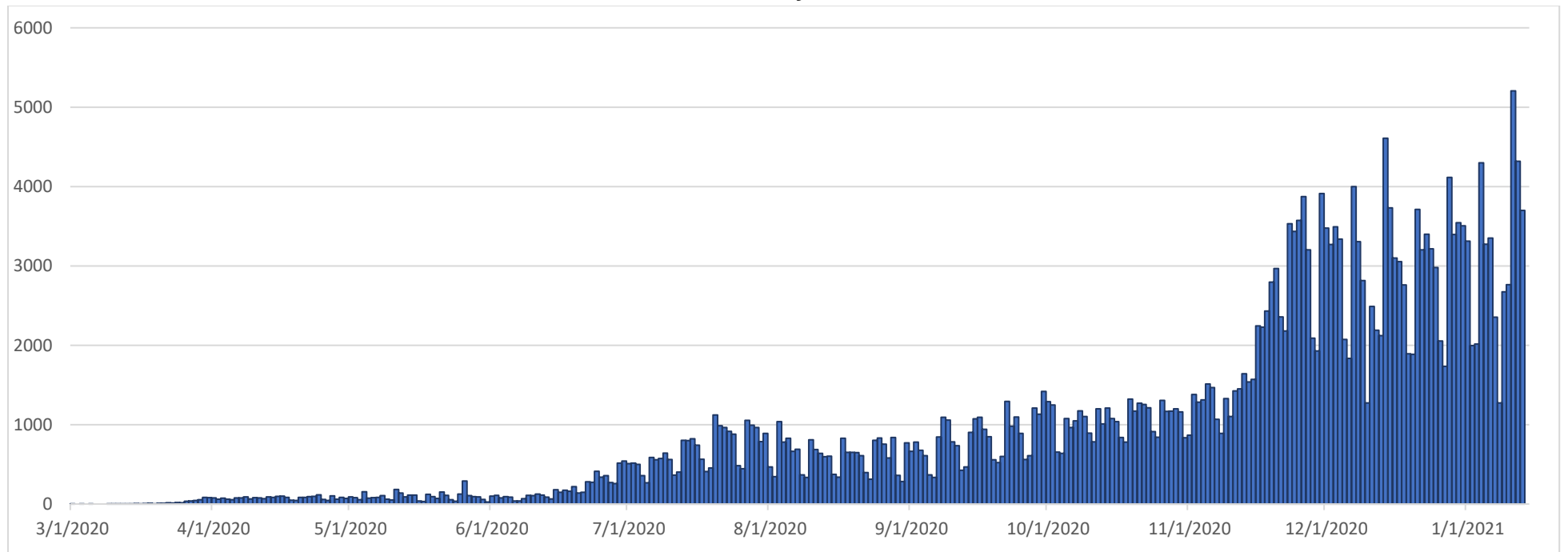
Comorbidities	Number (%)
At least 1 chronic condition ³	1,853 (64.3)
Chronic heart or circulatory disease	1,380 (47.9)
Diabetes	888 (30.8)
Chronic renal failure	457 (15.9)
Chronic lung failure	593 (20.6)
Chronic liver failure	64 (2.2)

³Chronic conditions include: chronic heart or circulatory disease, diabetes, chronic lung failure, chronic liver failure and renal failure.



RECOVERED CASES

Distribution of recovered cases of COVID-19, March 2020 – January 2021, Oklahoma



Note: A recovered case is an individual currently not hospitalized or deceased AND 14 days after the onset of symptoms

IMPACT OF MASK MANDATES

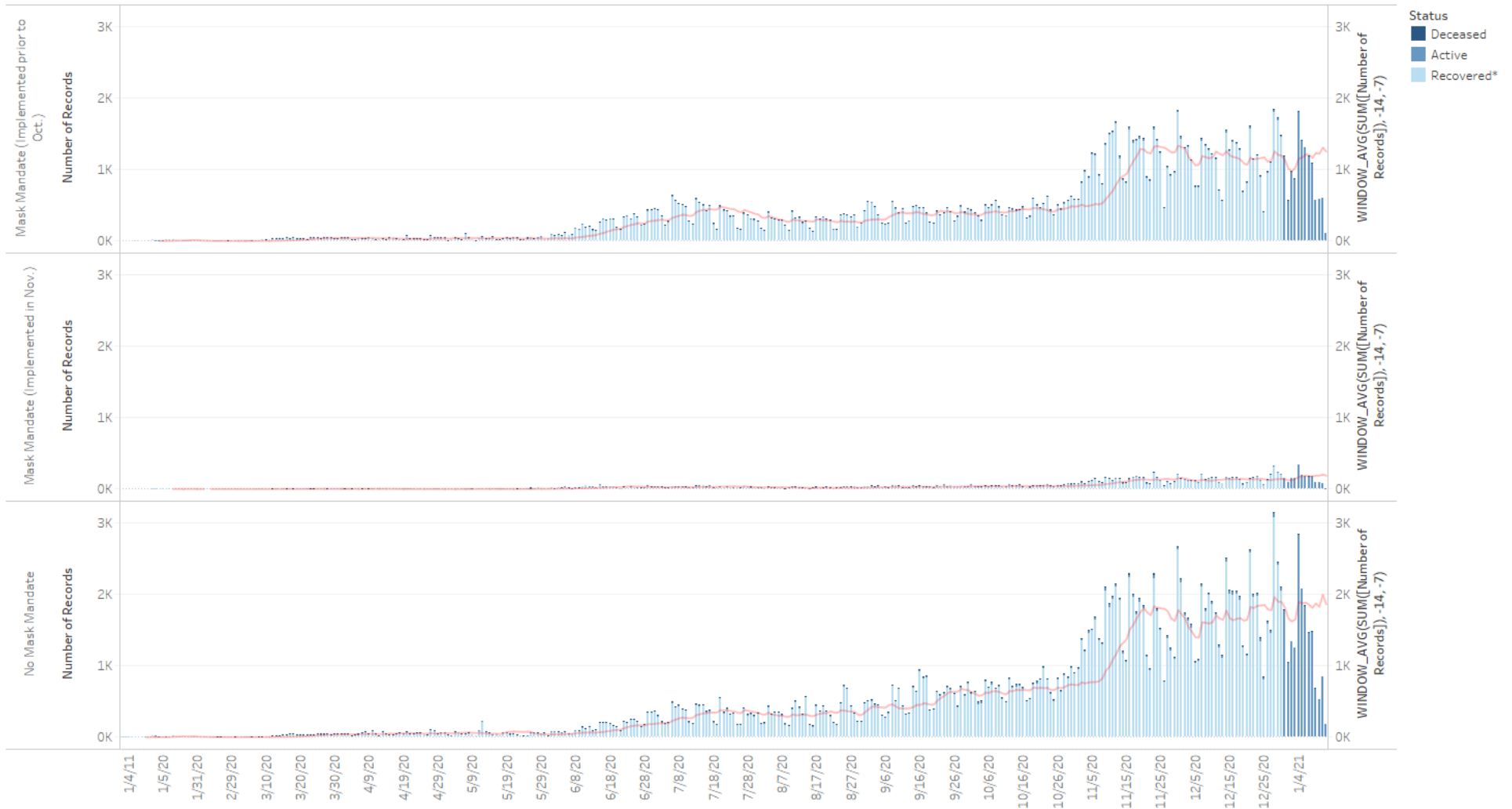
There are several important factors to consider in examining the data on case rates in mask mandate communities vs. those without:

1. As can be seen in this week's figure, there have been several municipalities adopt a mask mandate recently. Because mask usage prevents new infections but does not impact those currently in the incubation period, it is not appropriate to include these recent additions in the same group as communities that adopted mandates prior to October. Indeed, it is likely that increasing disease rates in these communities influenced the decision to adopt mandates.
2. The percentage change in case rates provided represent only a comparison from one single day to another. The full difference in rates can only be estimated by comparing data on all days within the period of interest. Such analysis is beyond the scope of this summary.
3. Mask mandates have been implemented primarily in densely populated metropolitan areas. Experience has shown that, in absence of mitigation efforts, such urban areas will have higher rates of disease transmission than in less populated areas. This can be observed in the graph above in the period before mid-July. The rate of increase was clearly higher in those communities that eventually adopted mask mandates. If urban populations have rates at or below those of less populated areas, it is likely that mitigation efforts are having a beneficial impact. Of course, mask mandates are not the only mitigation effort being employed, and it is not possible to determine what effect that alone has.

	7 Day Average Number of Cases by date of Onset* with 7 day lag						Percent Change 8/1 to 1/12	Percent Change 11/1 to 1/12
	1-Aug	1-Sep	1-Oct	1-Nov	1-Dec	12-Jan		
Mask Cities (Prior to Oct.)	331	291	379	487	1,312	1,251	278%	157%
per 100,000 Pop'l	20.5	18.1	23.5	30.2	81.4	77.6		
Mask Cities (Nov.)	25	21	37	48	154	188	652%	292%
per 100,000 Pop'l	17.7	14.9	26.2	34.0	109.0	133.0		
No Mask Areas	319	386	629	730	1,717	1,859	483%	155%
per 100,000 Pop'l	14.5	17.5	28.5	33.1	77.9	84.3		
Mask (Prior to Oct.) vs No Mask % Difference in per 100,000 est.	42%	3%	-18%	-9%	4%	-8%		

IMPACT OF MASK MANDATES (continued)

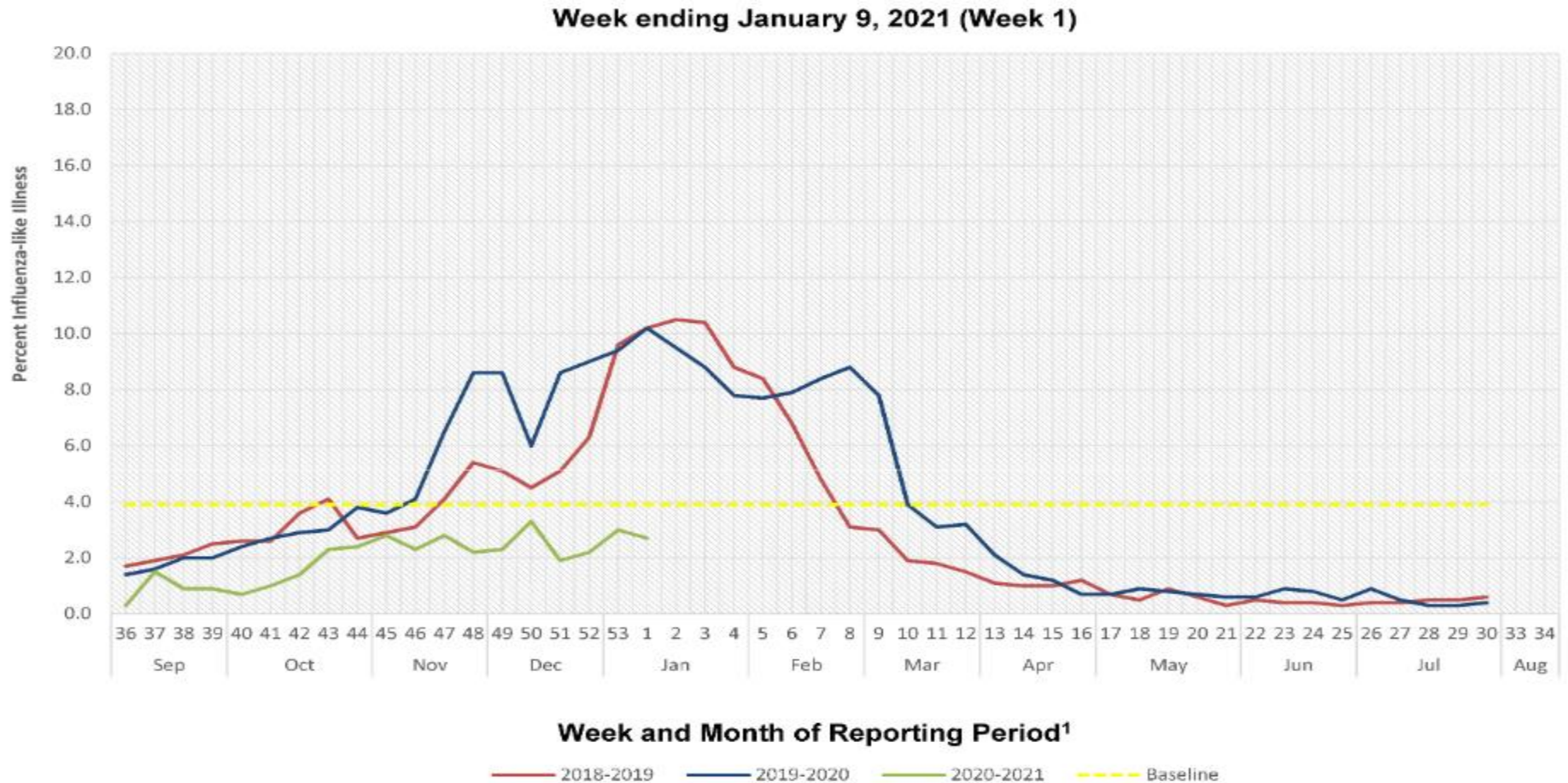
Status by Date of Onset as of 1/14/2021



The trends of sum of Number of Records and WINDOW_AVG(SUM([Number of Records]), -14, -7) for Event Dt Day broken down by Mask Mandate. For pane Sum of Number of Records: Color shows details about Status. The view is filtered on Status, which keeps Active, Deceased and Recovered*.

SYMPTOMS CRITERIA

WEEKLY PERCENT OF INFLUENZA-LIKE ILLNESS BASED ON TOTAL PATIENT VISITS TO SENTINEL CLINICIANS, OKLAHOMA VIRAL RESPIRATORY ILLNESS SURVEILLANCE SYSTEM, 2018-2021



¹These units correspond to the number of weeks in a year and allow for a comparison between multiple seasons.

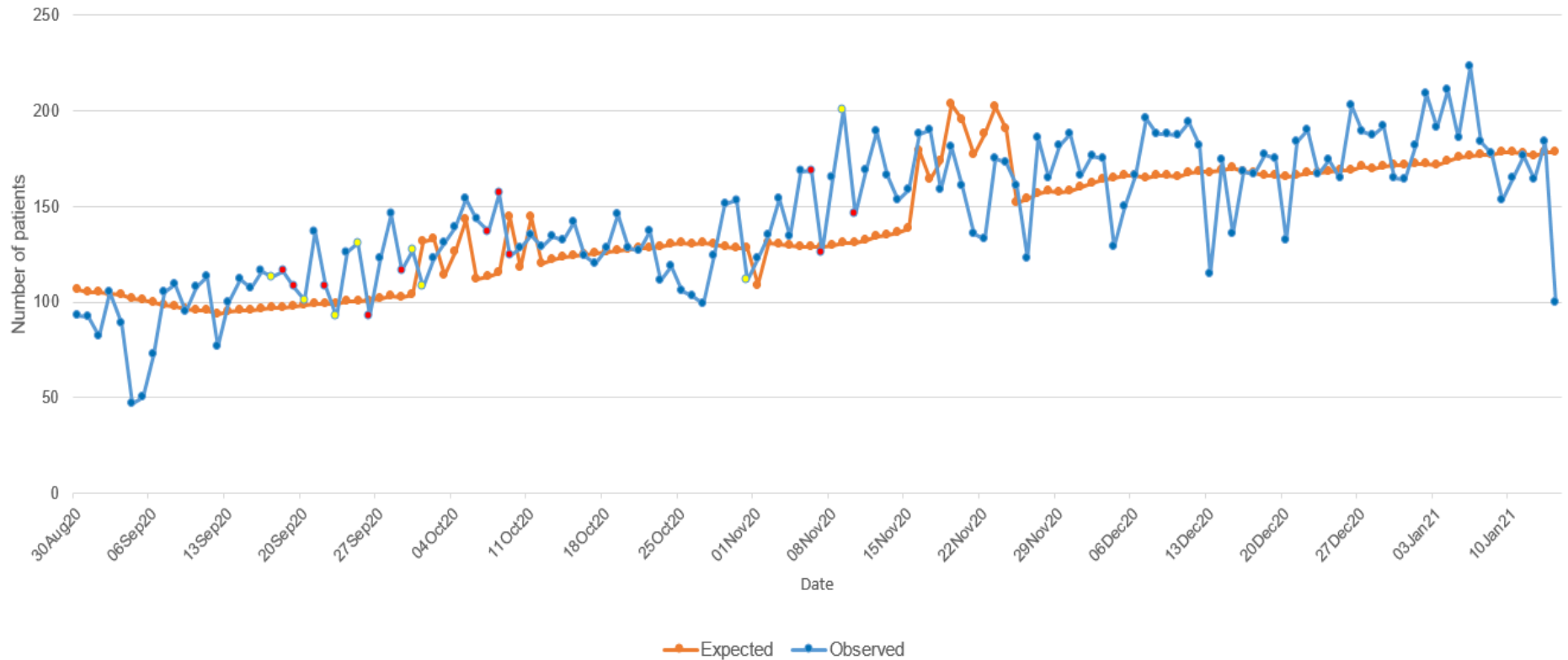
Interpretation: Data on Influenza-Like Illness (ILI) decreased to 2.7% of outpatient visits exhibiting fever with cough or sore throat. This week's value of 2.7% is below Oklahoma's baseline ILI of 3.9%.

Note: Data current up to week ending January 9, 2021 (Week 1).

Source: <https://oklahoma.gov/content/dam/ok/en/health/health2/aem-documents/prevention-and-preparedness/acute-disease-service/disease-information/flu-view>

COVID-19 RELATED EMERGENCY DEPARTMENT VISITS

Oklahoma State Syndromic Surveillance of
COVID-19 related ED Visits
August 30, 2020 - January 14, 2021



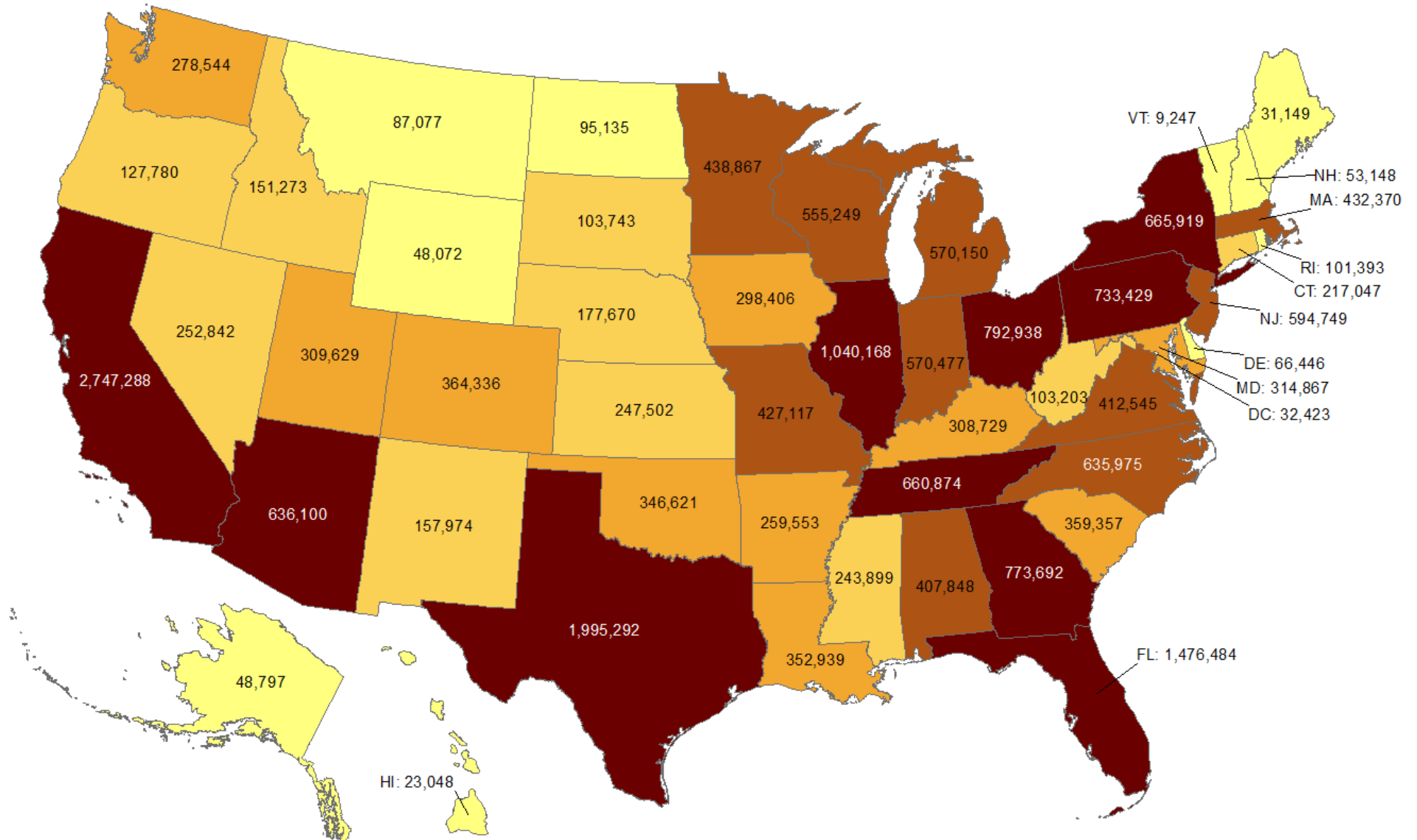
Interpretation: Data from syndromic surveillance shows that the number of COVID-19 related emergency department visits has been within the expected range for the past 2 weeks as indicated by the blue dots on the observed line.

.....

OKLAHOMA IN COMPARISON

Total number of reported COVID-19 cases

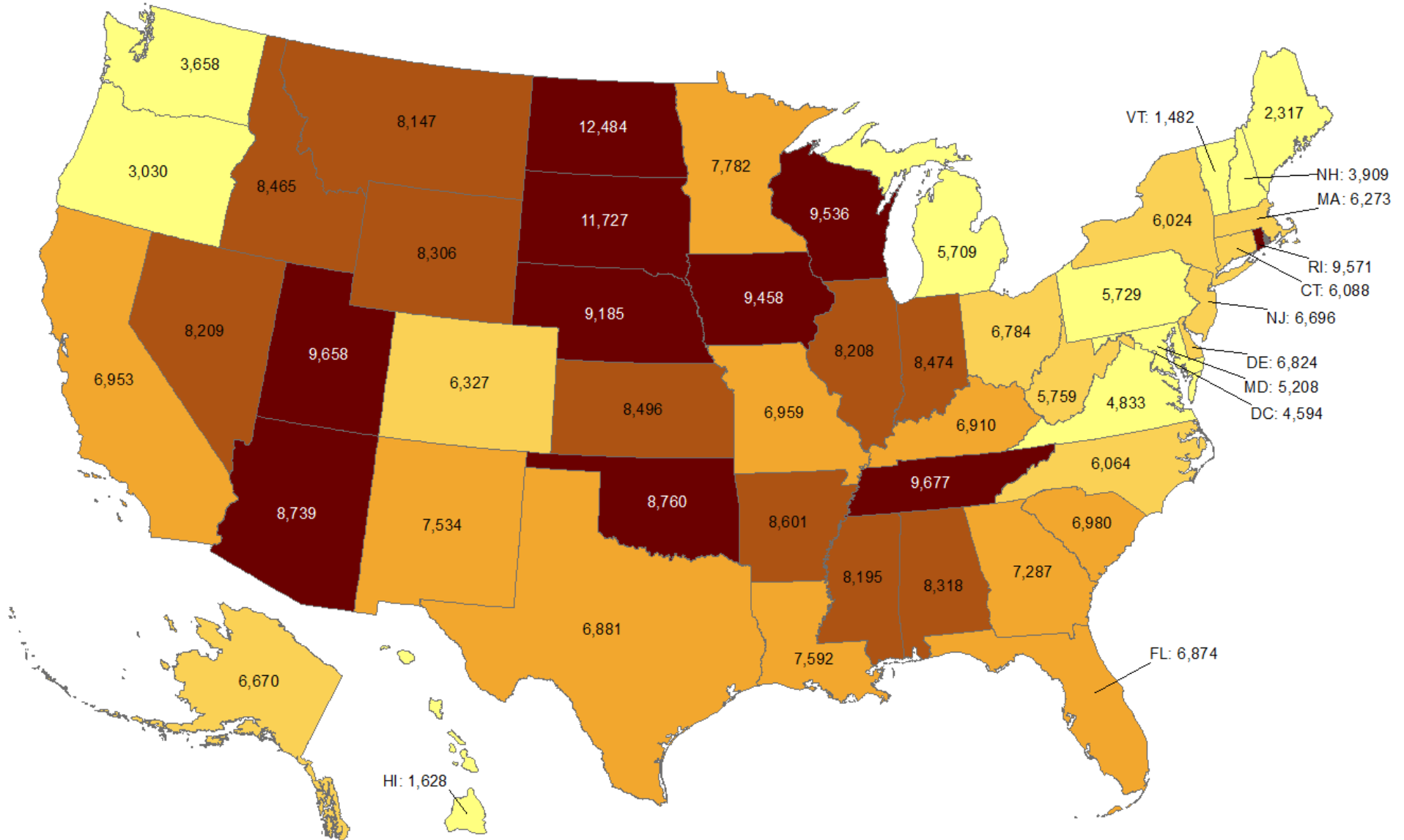
Oklahoma ranks **24** (out of all States and DC) in the total number of reported COVID-19 cases in the US.



Data from CDC. Available at <https://www.cdc.gov/covid-data-tracker/index.html>
Data as of January 13, 2021

Cumulative incidence of reported COVID-19 cases

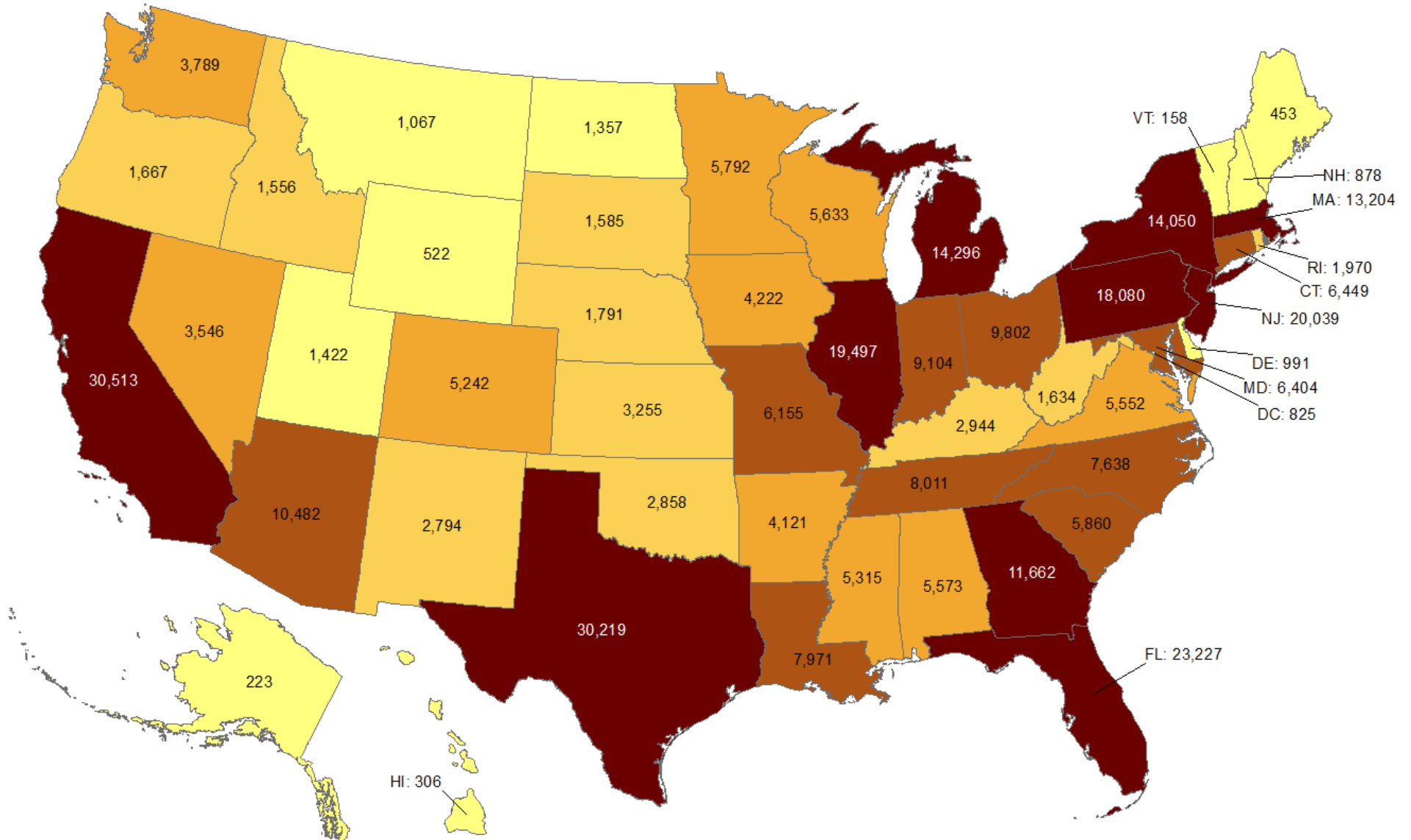
Oklahoma ranks **9** (out of all States and DC) in the cumulative incidence (per 100,000 persons) of reported COVID-19 cases in the US.



Data from CDC. Available at <https://www.cdc.gov/covid-data-tracker/index.html>
Data as of January 13, 2021

Total number of reported COVID-19 deaths

Oklahoma ranks **33** (out of all States and DC) in the total number of reported COVID-19 deaths in the US.



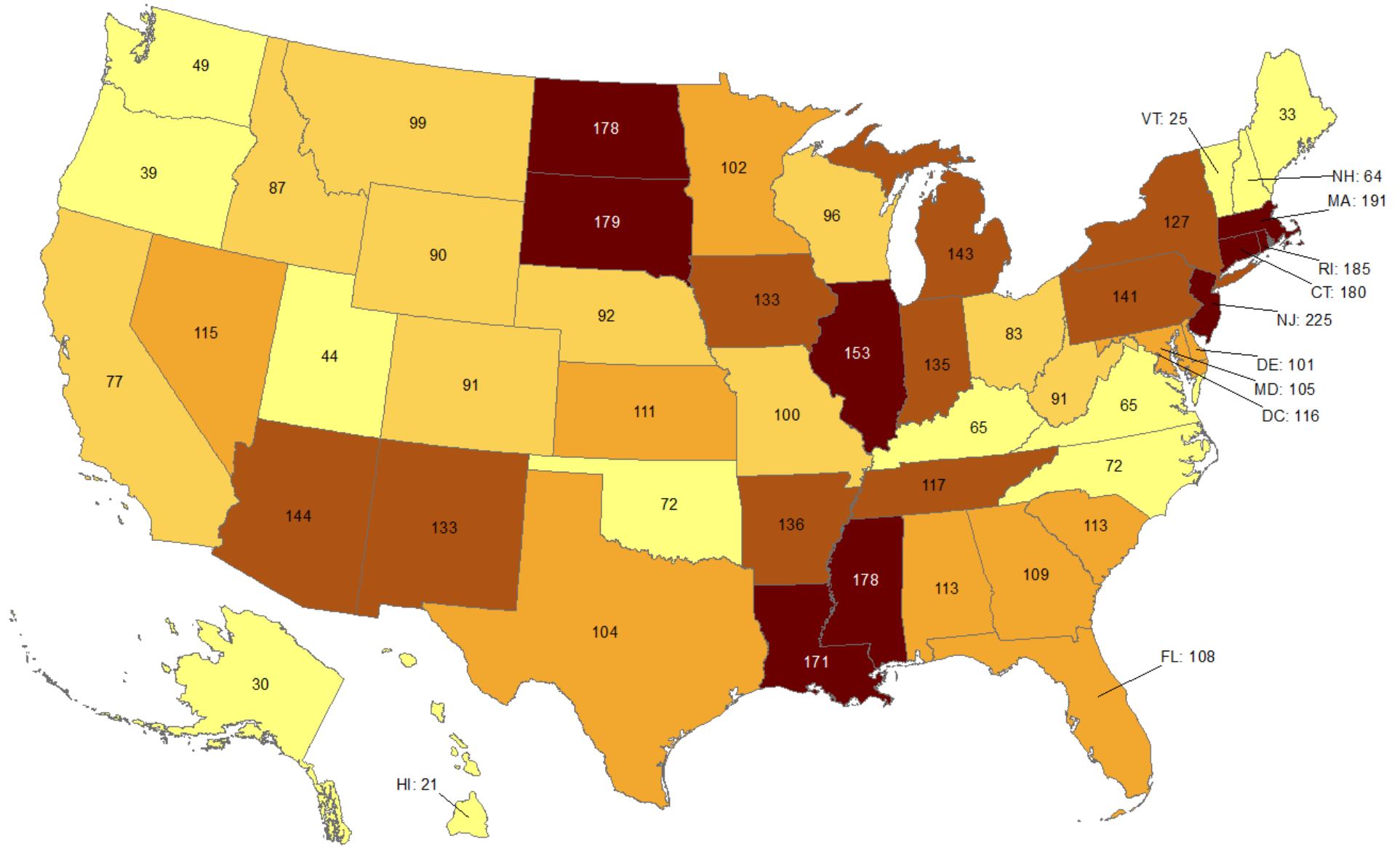
Data from CDC. Available at <https://www.cdc.gov/covid-data-tracker/index.html>

Data as of January 13, 2021

NOTE: CDC numbers include both Confirmed and Probable cases.

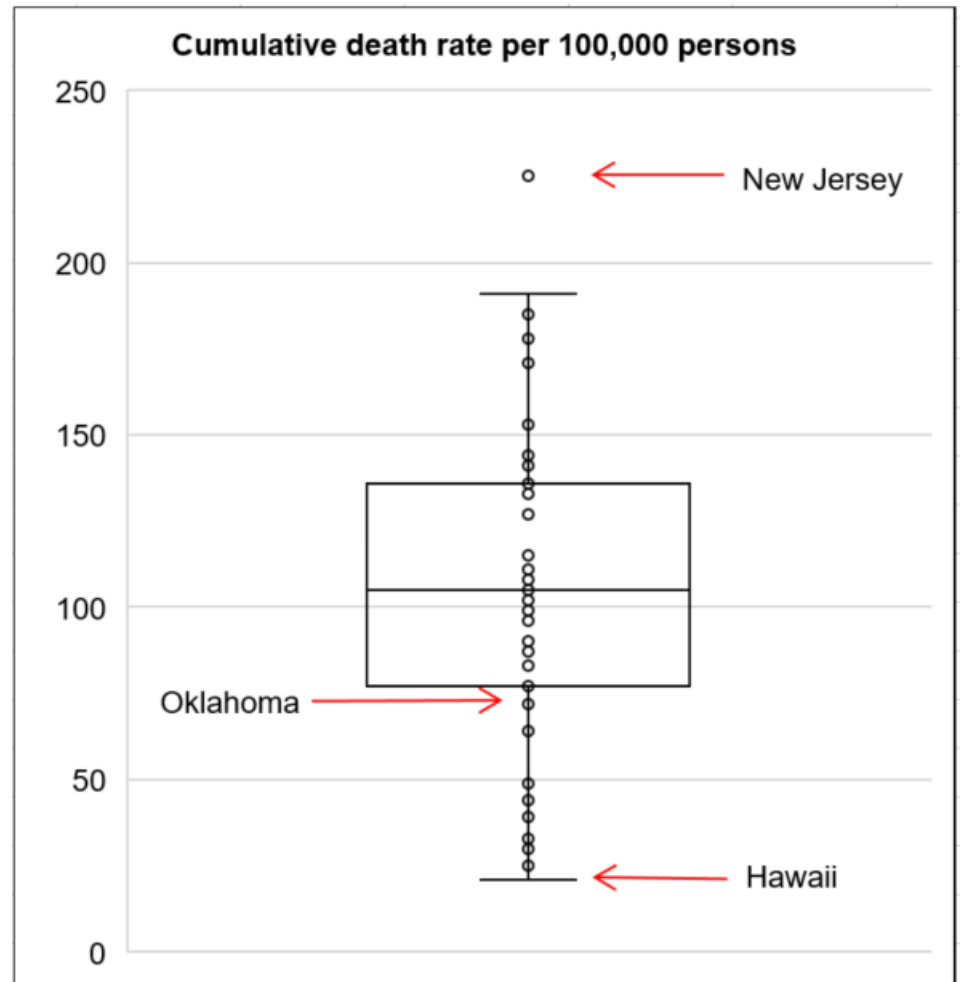
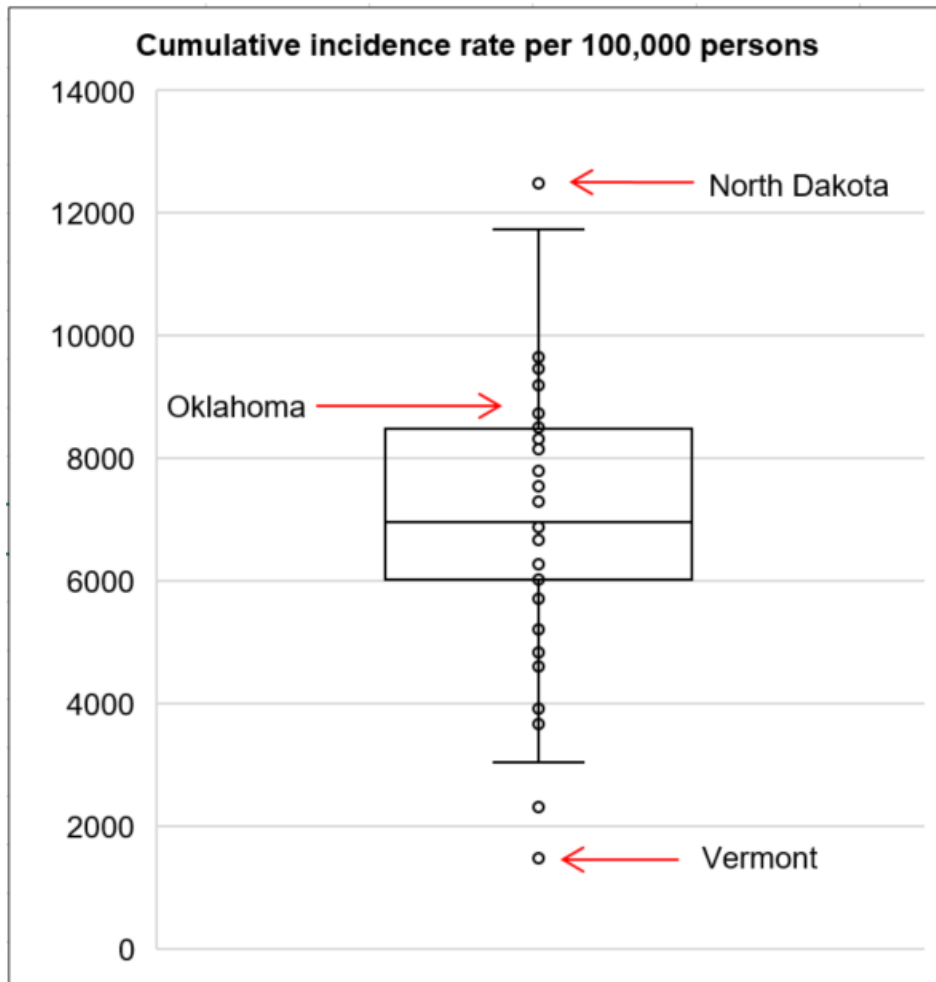
Cumulative death rate of reported COVID-19 cases

Oklahoma ranks **41** (out of all States and DC) in the cumulative death rate (per 100,000 persons) of reported COVID-19 cases in the US.



Data from CDC. Available at <https://www.cdc.gov/covid-data-tracker/index.html>
Data as of January 13, 2021

Cumulative incidence and cumulative death rate of reported COVID-19 cases



Interpretation: Oklahoma has cumulative incidence that is **above the 75th percentile** of the US and cumulative death rate **below the 25th percentile** of the US.

OKLAHOMA EXCESS DEATH ANALYSIS

- + indicates observed count above threshold
- Predicted number of deaths from all causes
- threshold for excess deaths

Weekly number of deaths (from all causes)

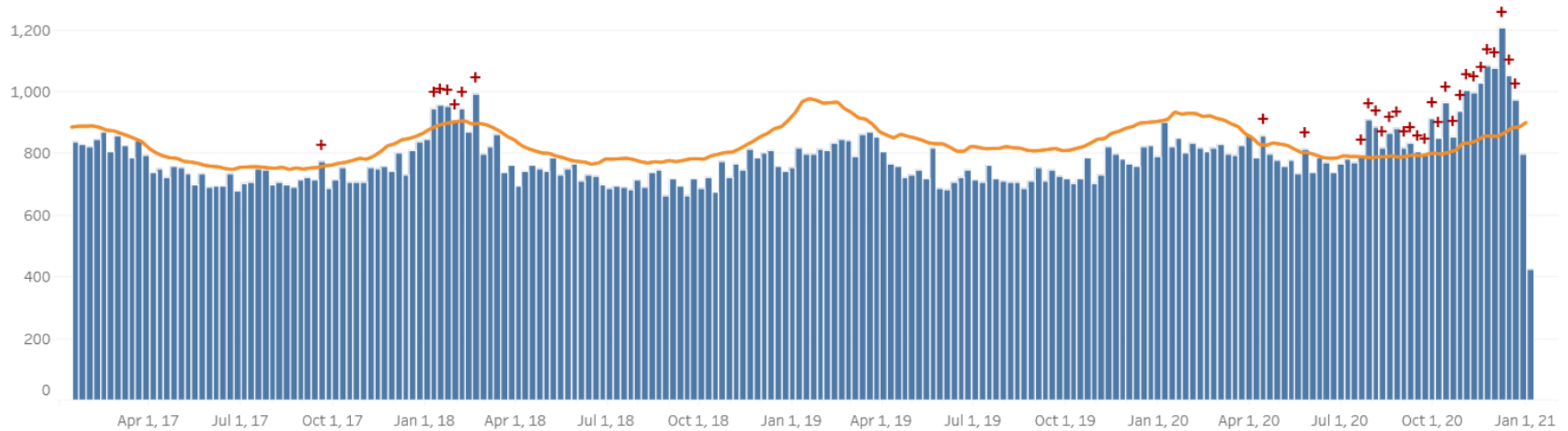


Figure notes: Contains data up to the week-ending date of January 2, 2020. Data in recent weeks are incomplete. Only 60% of the death records are submitted to NCHS within 1-days of the date of death, and completeness varies by jurisdiction.

Source: CDC, National Center for Health Statistics, https://www.cdc.gov/nchs/nvss/vsrr/covid19/excess_deaths.htm#dashboard, Jan 14, 2021 09:00AM

COVID-19 LTC OR NURSING HOME ASSOCIATED CASES BY COUNTY

Status as of Midnight January 13 2021

Data are preliminary and are subject to change as cases are processed.

County of Residence	Cases	Recovered**	Deaths
Adair	26	16	1
Alfalfa	5	5	0
Atoka	84	78	2
Beaver	20	18	1
Beckham	137	119	5
Blaine	47	44	0
Bryan	153	117	13
Caddo	158	132	17
Canadian	186	170	6
Carter	102	62	4
Cherokee	149	134	9
Choctaw	105	99	4
Cleveland	629	488	68
Coal	69	58	5
Comanche	182	137	15
Cotton	47	38	8
Craig	38	33	1
Creek	211	174	12
Custer	204	167	21

County of Residence	Cases	Recovered**	Deaths
Delaware	201	162	26
Dewey	17	16	1
Ellis	6	6	0
Garfield	173	155	9
Garvin	64	53	2
Grady	184	148	16
Grant	13	12	1
Greer	53	43	7
Harmon	53	52	1
Harper	2	2	0
Haskell	57	51	3
Hughes	24	22	0
Jackson	110	82	15
Jefferson	23	22	1
Johnston	17	17	0
Kay	181	150	13
Kingfisher	104	95	4
Kiowa	45	37	4
Latimer	42	35	3
Le Flore	205	178	12
Lincoln	129	105	21
Logan	110	97	3
Love	29	25	1

County of Residence	Cases	Recovered**	Deaths
Major	74	68	3
Marshall	24	23	0
Mayes	93	81	2
McClain	147	130	7
McCurtain	96	72	16
McIntosh	109	90	6
Murray	41	39	0
Muskogee	318	244	18
Noble	142	136	1
Nowata	53	52	0
Okfuskee	16	14	0
Oklahoma	1,668	1,421	149
Okmulgee	79	76	0
Osage	81	72	7
Ottawa	234	220	6
Pawnee	104	92	6
Payne	141	129	4
Pittsburg	248	203	19
Pontotoc	59	52	3
Pottawatomie	187	174	7
Pushmataha	41	37	4
Roger Mills	2	2	0
Rogers	399	305	44

County of Residence	Cases	Recovered**	Deaths
Seminole	136	109	3
Sequoyah	85	71	4
Stephens	211	184	3
Texas	68	61	6
Tillman	30	27	2
Tulsa	1,089	852	138
Wagoner	130	101	13
Washington	274	227	36
Washita	37	31	1
Woods	37	34	2
Woodward	55	50	3
<i>Total</i>	<i>10,902</i>	<i>9,133</i>	<i>848</i>

**Recovered: Currently not hospitalized or deceased and 14 days after onset/report.

COVID-19 LTC OR NURSING HOME ASSOCIATED CASES BY FACILITY

Status as of Midnight January 13, 2021

Data are preliminary and are subject to change as cases are processed.

Facility	Cases	Recovered**	Deaths
Aberdeen Heights Assisted Living Community	11	10	0
Aberdeen Memory Care of Tulsa	6	3	2
Accel at Crystal Park	33	25	6
Ada Care Center	5	3	0
Adams PARC Post Acute Recovery Center	103	86	14
Albert Hall	7	7	0
Alcis Place	1	1	0
Ambassador Manor Nursing Center	25	15	4
Anadarko Nursing & Rehab	35	28	1
Antlers Manor	1	1	0
Arbor House Assisted Living Center - Norman	16	14	2
Arbor House Assisted Living Center of Mustang	34	27	4
Arbor House Reminisce	35	30	5
Arbor Village	10	9	0
Artesian Home	9	7	0
Ash Street Place	3	3	0
Ashbrook Village	5	5	0
Aspen Health and Rehab	10	10	0
Atoka Manor	77	71	2
Autumn Leaves of Edmond	34	30	4

Facility	Cases	Recovered**	Deaths
Autumn Leaves of Southwest Oklahoma City	3	2	1
Autumn Leaves of Tulsa	1	1	0
Avondale Cottage of Pryor	1	1	0
Avonlea Cottage of Seminole	19	18	0
Avonlea Cottage of Shawnee, LLC	10	9	0
Ayers Nursing Home	18	12	3
Ballard Nursing Center	25	21	3
Baptist Village of Hugo	60	57	1
Baptist Village of Oklahoma City	51	45	4
Baptist Village of Owasso	22	19	2
Baptist Village of Owasso AL	11	9	0
Barnsdall Nursing Home	2	2	0
Bartlesville Assisted Living	23	20	0
Bartlesville Health and Rehabilitation Community	104	81	21
Beacon Ridge	13	8	0
Beadles Nursing Home	31	28	2
Beare Manor	15	11	3
Beaver County Nursing Home	20	18	1
Belfair of McAlester	10	9	0
Belfair of Shawnee	2	1	0
Bell Avenue Nursing Center	20	17	2
Bellarose Senior Living	1	1	0
Bellevue Health and Rehabilitation	98	82	10

Facility	Cases	Recovered**	Deaths
Betty Ann Nursing Center	10	9	0
Beverly Place	1	1	0
Billings Fairchild Center, Inc	130	128	0
Binger Nursing and Rehabilitation	61	50	11
Blue Ridge Place	1	1	0
Blue River Healthcare, Inc	12	12	0
Boyce Manor Nursing Home	13	13	0
Bradford Village Healthcare Center: Nursing Home	14	8	2
Brentwood Extended Care & Rehab	21	19	0
Broadway Living Center	3	2	1
Broadway Manor Nursing Home	44	33	5
Broken Arrow Assisted Living	7	5	2
Broken Arrow Nursing Home, Inc.	33	29	4
Broken Bow Nursing Home	56	41	11
Brookdale Ada	2	2	0
Brookdale Bartlesville North	18	15	3
Brookdale Bartlesville South	9	9	0
Brookdale Broken Arrow	10	8	2
Brookdale Cedar Ridge	8	8	0
Brookdale Chickasha	19	16	3
Brookdale Claremore	6	4	1
Brookdale Durant	26	21	1
Brookdale Edmond Danforth	8	0	0

Facility	Cases	Recovered**	Deaths
Brookdale Edmond Santa Fe	5	5	0
Brookdale Muskogee	22	11	6
Brookdale Norman	1	1	0
Brookdale Owasso	1	1	0
Brookdale Shawnee	1	0	1
Brookdale Stillwater	4	3	0
Brookdale Tulsa 71st and Sheridan	65	51	12
Brookdale Tulsa Midtown	9	4	2
Brookdale Tulsa South	5	4	1
Brookdale Village	3	3	0
Brookdale Weatherford	14	11	2
Brookridge Retirement Community	5	3	0
Brookside Nursing Center	7	7	0
Brookwood Skilled Nursing and Therapy	6	4	1
Burford Manor	13	12	0
Callaway Nursing Home	12	12	0
Canoe Brook Ardmore	1	1	0
Capitol Hill Skilled Nursing and Therapy	46	39	7
Carnegie Nursing Home, Inc.	39	31	4
Cedar Creek Nursing Center	74	23	0
Cedar Crest Manor	5	5	0
Cedarcrest Care Center	49	39	7
Center of Family Love	7	7	0

Facility	Cases	Recovered**	Deaths
Chandler Therapy & Living Center, LLC	53	43	9
Checotah Nursing Center	6	5	0
Cherokee County Nursing Center	64	64	0
Chickasha Nursing Center, Inc	12	11	1
Chisholm Trail Assisted Living	17	13	0
Choctaw Nation Nursing Home	36	32	4
Cimarron Nursing Center	14	11	1
Cimarron Pointe Care Center	27	24	1
Claremore Skilled Nursing and Therapy	12	10	1
Cleveland Manor Nursing & Rehab	59	57	2
Clinton Therapy & Living Center	5	4	0
Colonial Manor II	56	55	1
Colonial Manor Nursing Home	23	19	2
Colonial Park Manor, LLC	5	4	0
Colonial Terrace Care Center	6	3	0
Community Health Care of Gore	9	8	0
Community Health Center	10	9	1
Copp's Residential Care, Inc	2	2	0
Cordell Christian	9	8	0
Corn Heritage Village and Rehab	26	25	1
Corn Heritage Village and Rehab of Weatherford	43	39	4
Cottonwood Creek Skilled Nursing & Therapy	28	25	2
Country Club Care	75	62	0

Facility	Cases	Recovered**	Deaths
Country Club at Woodland Hills	7	6	0
Country Lane	3	2	0
Country Place	1	1	0
Countryside Estates	8	6	0
Countrywood Assisted Living and Memory Care	12	9	1
Covenant Living at Inverness	20	17	1
Covenant Living of Bixby	1	1	0
Coweta Manor Nursing Home	68	57	11
Creek Place	3	3	0
Creekside Village	2	2	0
Cross Timbers Nursing and Rehabilitation	46	41	3
Crossroads Residential Care	8	5	1
Crystal Place, LLC	1	1	0
Dogwood Creek Retirement Center	1	0	0
Dr W F & Mada Dunaway Manor	40	36	4
Drumright Nursing Home	42	37	0
Duncan Assisted Living	16	15	0
Duncan Community Residence	1	1	0
Eastgate Village Retirement Center	75	59	2
Eastwood Manor	91	90	1
Edith Kassanavoid Gordon Assisted Living Center	2	2	0
Edmond Healthcare Center	45	36	8
El Reno Post-Acute Rehabilitation Center	7	4	1

Facility	Cases	Recovered**	Deaths
Elk City Nursing Center	57	47	3
Elk Crossing	30	26	2
Elkwood Assisted Living and Memory Care	25	22	1
Elmbrook Home	7	7	0
Elmwood Manor Nursing Home	11	11	0
Emerald Care Center Claremore	119	107	6
Emerald Care Center Midwest	25	21	2
Emerald Care Center Southwest LLC	51	48	2
Emerald Care Center Tulsa	11	9	0
Emerald Square Assisted Living Community	3	3	0
English Village Manor	47	33	8
Enid Senior Care	13	12	1
Epworth Villa Health Services	22	21	1
Eufaula Manor Nursing and Rehabilitation Center	77	68	4
Fairfax Manor	12	12	0
Fairmont Skilled Nursing and Therapy	76	72	4
Fairview Fellowship Home for Senior Citizens, Inc	77	72	2
Family Care Center of Fairland	2	2	0
Family Care Center of Kingston	12	12	0
Featherstone Assisted Living Community of Ada	2	1	0
Featherstone Assisted Living Community of Moore	37	33	4
First Shamrock Care Center	3	3	0
Forest Hills Care and Rehabilitation Center	15	10	2

Facility	Cases	Recovered**	Deaths
Forrest Manor Nursing Center	8	6	0
Fort Gibson Nursing Home	15	14	0
Fountain View Manor, Inc	7	7	0
FountainBrook Assisted Living and Memory Support	7	6	0
Four Seasons Rehabilitation & Care	33	22	1
Franciscan Villa	109	90	14
Garland Road Nursing and Rehab Center	8	8	0
Gatesway Foundation, Inc	3	3	0
Glade Avenue Assisted Living	3	3	0
Glade Avenue South	6	2	2
Glenhaven Retirement Village	53	35	3
Glenwood Healthcare	18	12	6
Go Ye Village Continuum of Care Retirement Community	5	3	2
Golden Age Nursing Home of Guthrie, LLC	82	70	3
Golden Oaks Village	31	23	5
Grace Living Center - Clinton	11	5	1
Grace Living Center - Jenks	23	16	5
Grace Living Center - Norman	88	74	12
Grace Living Center - Stillwater	12	12	0
Grace Living Center - Tahlequah East Shawnee	2	1	1
Gracewood Health and Rehab	42	32	6
Gran Grans Place	1	1	0
Grand Lake Villa	31	19	6

Facility	Cases	Recovered**	Deaths
Grandwood Assisted Living, LC	38	34	3
Green Country Care Center	24	20	4
Green Country Village Assisted Living Center	4	4	0
Green Tree at Sand Springs	5	4	1
Greenbrier Nursing Home	10	10	0
Greenbrier Village Residential Living, LLC	3	3	0
Gregston Nursing Home, Inc.	9	8	0
Grove Nursing Center	90	70	16
Harrah Nursing Center	44	39	3
Haskell County Nursing Center, Inc	53	47	3
Hays House	36	36	0
Heartsworth Center for Nursing and Rehabilitation	35	30	2
Heartsworth House Assisted Living	1	1	0
Heatheridge Residential Care Center	3	1	0
Heavener Nursing & Rehab	53	44	7
Hennessey Nursing & Rehab	75	73	2
Henryetta Community Skilled Healthcare & Rehab	3	3	0
Hensley Nursing & Rehab	34	29	2
Heritage Assisted Living	4	4	0
Heritage Community	29	26	2
Heritage Hills Living & Rehabilitation Center	48	27	0
Heritage Manor	30	29	1
Heritage Park	6	5	1

Facility	Cases	Recovered**	Deaths
Heritage Point of Tulsa	1	1	0
Heritage Villa Nursing Center	17	13	0
Heritage Village Nursing Home	11	8	0
Heritage at Brandon Place Health and Rehabilitation	55	44	4
High Cedar Residential Care	1	1	0
Higher Call Nursing Center	37	36	0
Highland Park Health Care	8	8	0
Hill Nursing Home, Inc	16	14	1
Hillcrest Manor Nursing Center	6	3	3
Hillcrest Nursing Center	20	19	0
Hobart Nursing & Rehab	23	21	1
Holiday Heights Nursing Home	11	10	1
Home of Hope Elmwood House	1	0	0
Home of Hope Scrapper House	1	0	0
Homestead Residential Care	1	1	0
Homestead of Bethany, LLC	9	8	0
Homestead of Hugo	42	39	3
Homestead of Owasso	1	1	0
Ignite Medical Resort Norman, LLC	46	34	7
Ignite Medical Resort OKC	99	88	11
Iris Memory Care of Edmond	6	6	0
Jacquelyn House	2	2	0
Jan Frances Care Center	11	10	0

Facility	Cases	Recovered**	Deaths
John H. Johnson Care Suites	4	3	0
Kenwood Manor	20	18	1
Kingwood Skilled Nursing and Therapy	26	20	1
Lake Country Nursing Center	29	27	1
Lake Drive Care and Rehabilitation Center	39	39	0
Lakeland Manor, Inc	11	8	1
Lakeview Nursing & Rehab	18	13	2
Landmark of Midwest City Rehabilitation and Nursing	40	33	4
Lane Nursing & Ventilator Care	2	2	0
Latimer Nursing Home	24	20	2
Legacy Village of Stillwater	16	16	0
Legend at 71st St	8	6	1
Legend at Council Road	6	5	0
Legend at Mingo Road	4	4	0
Legend at Rivendell	56	49	5
Leisure Village Health Care Center	47	40	5
Lexington Nursing Home	12	11	0
Liberty Place	2	2	0
Lindsay Nursing & Rehab	14	7	0
Linwood Village Nursing & Retirement Apts	14	14	0
Lyndale at Edmond	2	2	0
Magnolia Creek Skilled Nursing and Therapy	37	25	7
Mangum Skilled Nursing and Therapy	54	45	6

Facility	Cases	Recovered**	Deaths
Maple Lawn Nursing and Rehabilitation	20	17	1
Maplewood Care Center	18	14	1
Marlow Nursing & Rehab	16	16	0
McAlester Nursing & Rehab	47	43	2
McCall's Chapel School, Inc #11	2	2	0
McCall's Chapel School, Inc #13	1	1	0
McCall's Chapel School, Inc #4	1	1	0
McCall's Chapel School, Inc #7	1	1	0
McCall's Chapel School, Inc #8	1	1	0
McCall's Chapel School, Inc #9	1	1	0
McLoud Nursing Center	3	3	0
McMahon-Tomlinson Nursing Center	23	20	2
Meadow Brook Residential Care	27	25	0
Meadowbrook Nursing Center	33	30	0
Meadowlake Estates	78	73	4
Meadowlakes Retirement Village	1	1	0
Medical Park West Rehabilitation	7	4	2
Medicallodges Dewey	4	4	0
Meeker Nursing Center	46	34	11
Memorial Heights Nursing Center	24	17	4
Memorial Nursing Center	25	23	1
Memory Care Center at Emerald	4	3	0
Meridian Nursing Home	10	9	0

Facility	Cases	Recovered**	Deaths
Miami Nursing Center, LLC	79	73	3
Mid-Del Skilled Nursing and Therapy	25	22	0
Mitchell Manor	51	49	2
Monroe Manor	11	9	0
Monterea, Inc Assisted Living	5	4	1
Monterea, Inc LTC/SNF	6	6	0
Montevista Rehabilitation and Skilled Care	15	8	2
Mooreland Heritage Manor	20	19	0
Muscogee (Creek) Nation Skilled Nursing Facility	1	1	0
Muskogee Nursing Center	17	7	0
New Hope Retirement & Care Center	3	3	0
Noble Health Care Center	14	14	0
North County Assisted Living	6	4	1
North County Center for Nursing and Rehabilitation	32	30	2
North Winds Living Center	1	1	0
Northhaven Place	10	8	1
Northwest Nursing Center	2	2	0
Nowata Nursing Center	4	3	0
Oak Hills Living Center	15	14	1
Oakridge Home	9	8	0
Oakridge Nursing Center	54	43	5
Okemah Care Center	1	1	0
Oklahoma Methodist Manor	28	23	2

Facility	Cases	Recovered**	Deaths
Oklahoma Veterans Center, Ardmore Division	23	18	1
Oklahoma Veterans Center, Claremore Division	232	156	35
Oklahoma Veterans Center, Clinton Division	140	113	13
Oklahoma Veterans Center, Lawton-Ft. Sill Division	27	17	2
Oklahoma Veterans Center, Norman Division	80	54	21
Oklahoma Veterans Center, Sulfur Division	22	22	0
Oklahoma Veterans Center, Talihina Division	25	20	3
Okmulgee Terrace	1	1	0
Osage Nursing Home, LLC	4	4	0
Oxford Glen at Owasso	25	21	4
Parkview Pointe Senior Living	1	1	0
Pauls Valley Care Center	1	1	0
Perry Green Valley Nursing Center, LLC	17	13	1
Pleasant Valley Health Care Center	43	31	0
Pocola Health & Rehab	58	54	3
Ponca City Nursing and Rehabilitation	65	50	4
Prairie House Assisted Living & Memory Care	7	5	0
Prairie Pointe at Stroud	10	9	0
Primrose Retirement Community of Shawnee	11	10	0
Primrose Retirement Community of Stillwater	3	3	0
Providence House	3	3	0
Providence Place	1	1	0
Purcell Care Center, LLC	40	32	1

Facility	Cases	Recovered**	Deaths
Quail Creek Senior Living	23	18	4
Quail Ridge Living Center, Inc (Colcord, OK)	34	33	1
Quail Ridge Senior Living	24	17	6
Quinton Manor Nursing Home	10	10	0
RT 66 Residential Care Home, LLC	7	5	0
Rainbow Health Care Community: Nursing Home	66	58	4
Rambling Oaks (Norman)	24	19	2
Rambling Oaks Courtyard Assisted Living & Memory Care	6	6	0
Ranch Terrace Nursing Home	21	18	2
Ranchwood Nursing Center	30	29	1
Reliant Living Center	11	9	0
Reliant Living Center of Del City	2	2	0
River Oaks Skilled Nursing	41	40	1
Riverside Health Services LLC	9	3	0
Robert M Greer Center	1	1	0
Rolling Hills Care Center	25	21	2
Ruth Wilson Hurley Manor	73	62	5
Saint Simeons Episcopal Home	19	17	0
Sand Plum Assisted Living Community	4	3	1
Sand Springs Nursing and Rehabilitation	5	5	0
Seiling Nursing Center	7	6	1
Seminole Care and Rehabilitation Center	76	69	3
Seminole Pioneer Nursing Home	20	4	0

Facility	Cases	Recovered**	Deaths
Senior Star The Brook	3	3	0
Senior Suites Healthcare	10	9	1
Senior Village	10	7	1
Sequoyah East Nursing Center, LLC	13	13	0
Sequoyah Manor	54	48	3
Sequoyah Pointe Living Center	24	20	1
Shady Rest Care Center	27	27	0
Shanoan Springs Nursing and Rehabilitation	62	56	4
Share Medical Center	3	3	0
Shattuck Nursing Center	4	4	0
Shawn Manor Nursing Home	2	2	0
Shawnee Care Center	34	34	0
Shawnee Colonial Estates Nursing Home	71	65	6
Sherwood Manor Nursing Home	13	10	2
Shiloh Manor	1	0	0
Sienna Extended Care & Rehab	36	35	1
Skiatook Nursing Home	43	36	6
Sommerset Neighborhood	14	11	1
South Park East	44	39	2
South Pointe Rehabilitation and Care Center	170	147	13
Southbrook Healthcare, Inc.	29	16	1
Southern Hills Rehabilitation Center	81	69	10
Southern Oaks Care Center	55	43	4

Facility	Cases	Recovered**	Deaths
Southern Plaza Assisted Living and Memory Care	28	27	0
Southern Pointe Living Center	40	31	6
Spanish Cove Housing Authority	11	11	0
Spiro Nursing Home, Inc.	39	35	0
St. Ann's Skilled Nursing and Therapy	83	67	15
St. Katharine Drexel Retirement Center	7	7	0
Stilwell Nursing Home, LLC	19	10	1
Stonecreek Assisted Living and Memory Care	3	3	0
Storey Oaks	48	46	0
Stroud Health Care Center South	7	7	0
Summers Healthcare, LLC	30	29	0
Sunset Estates of Purcell	79	72	4
Tamarack Retirement Center	18	14	2
Teal Creek Assisted Living & Memory Care	4	4	0
Tealridge Assisted Living	9	9	0
Temple Manor Nursing Home	43	36	6
Ten Oaks Place	10	5	3
The Arbors Assisted Living Center	7	6	0
The Brentwood Senior Living	20	13	1
The Chateau	11	7	2
The Commons	50	50	0
The Commons - AL	1	1	0
The Cottage Extended Care	24	13	5

Facility	Cases	Recovered**	Deaths
The Courtyards at Claremore Assisted Living	7	5	1
The Courtyards at Magnolia Creek	9	9	0
The Fountains at Canterbury Health Center	30	26	1
The Gardens	14	10	1
The Gardens at Rivermont	2	2	0
The Golden Rule Home	43	41	0
The Grand at Bethany Skilled Nursing and Therapy	4	4	0
The Health Center at Concordia	27	25	1
The Health Center at Concordia ALC	8	8	0
The Heaven House Elmwood	1	1	0
The Highlands at Owasso	28	21	3
The King's Daughters & Sons Nursing Home	11	11	0
The Lakes	10	6	1
The Linden at Stonehaven Square	14	9	5
The Living Center	31	25	3
The Lodge at Brookline	14	12	1
The Mansion at Waterford	21	19	2
The Neighborhoods at Baptist Village of Ada	3	3	0
The Neighborhoods at Baptist Village of Elk City	8	8	0
The Neighborhoods at Baptist Village of Okmulgee	1	1	0
The Oaks Healthcare Center	3	3	0
The Parke Assisted Living	5	3	1
The Regency Skilled Nursing and Therapy	6	5	0

Facility	Cases	Recovered**	Deaths
The Renaissance of Stillwater - Assisted Living	3	3	0
The Springs Skilled Nursing and Therapy	38	26	2
The Timbers Skilled Nursing and Therapy	63	53	7
The Veraden	4	4	0
The Villages at Southern Hills	79	62	13
The Willows	1	1	0
The Wilshire Skilled Nursing and Therapy	3	3	0
The Wolfe Living Center at Summit Ridge	13	10	1
Tidwell Living Center	1	1	0
Timberwood Assisted Living & Memory Care	1	1	0
Touchmark at Coffee Creek	5	5	0
Town Village Assisted Living	1	1	0
Town of Vici Nursing Home	16	16	0
Tulsa Assisted Living and Memory Care	3	3	0
Tulsa Nursing Center	29	26	1
Tuscany Village Nursing Center	22	19	1
Tuttle Care Center	26	22	2
University Park Skilled Nursing & Therapy	64	57	4
University Village	33	28	3
Via Christi Village Ponca City	70	61	3
Vian Nursing & Rehab, LLC	14	7	1
Victorian Estates	2	2	0
Village Health Care Center	11	11	0

Facility	Cases	Recovered**	Deaths
Village Lodge of Ardmore Village	9	8	1
Village at Oakwood	7	4	1
Village on the Park	39	32	6
Villagio of Oklahoma City	1	1	0
Wagoner Health & Rehab	20	11	0
Walnut Grove Living Center	67	53	12
Warr Acres Nursing Center	18	16	1
Washita Valley Living Center	32	31	1
Weatherwood Assisted Living and Memory Care	9	9	0
Wellington Parke, LLC	3	3	0
West Wind Assisted Living	21	18	1
Westbrook Gardens	6	5	1
Westbrook Healthcare, Inc	19	18	1
Westhaven Nursing Home	76	69	2
Westview Cottages	8	6	0
Wewoka Healthcare Center	5	4	0
Wildewood Skilled Nursing and Therapy	5	4	1
Wildwood Care Center, Inc	26	0	1
Wilkins Health and Rehabilitation Community	19	17	0
Willow Creek Health Care	1	1	0
Willow Haven Nursing Home	28	23	4
Willow Park Health Care Center	64	55	5
Willowood at Mustang Assisted Living and Memory Care	4	4	0

Facility	Cases	Recovered**	Deaths
Wilson Nursing Center	18	3	0
Windridge Nursing and Rehabilitation Center	14	11	2
Windsor Hills Nursing Center	6	5	1
Woodland Park Home, Inc	5	4	0
Woodlands Skilled Nursing & Therapy	2	2	0
Woodview Home, Inc.	5	0	0
Woodward Skilled Nursing and Therapy	32	28	3
York Manor Nursing Home	42	39	2
Zarrow Pointe	14	10	2
<i>Total</i>	<i>10,902</i>	<i>9,133</i>	<i>848</i>

**Recovered: Currently not hospitalized or deceased and 14 days after onset/report.

ACKNOWLEDGEMENT

The weekly report is made possible through the efforts of county and city public health and healthcare professionals.

NOTES

Every effort is made to ensure accuracy and the data is up-to-date for the time period reported.
For daily updates on COVID-19, please visit <https://coronavirus.health.ok.gov/>

DISCLAIMER

The purpose of publishing aggregated statistical COVID-19 data through the OSDH Dashboard, the Executive Order Report, and the Weekly Epidemiology and Surveillance Report is to support the needs of the general public in receiving important and necessary information regarding the state of the health and safety of the citizens of Oklahoma. These resources may be used only for statistical purposes and may not be used in any way that would determine the identity of any reported cases.