

# OKLAHOMA COVID-19 WEEKLY REPORT

Weekly Epidemiology and Surveillance Report  
September 26 – October 2, 2021



**PURPOSE** To provide up-to-date weekly epidemiological data on COVID-19 in Oklahoma.

## SNAPSHOT

	Sept 26 – Oct 2	Change <sup>1</sup>	Total
Cases	9,319	-20.1%	619,056
Recovered cases <sup>2</sup>	12,377	-18.6%	596,855
Deaths	264	n/a	9,213

1. Change from the week of September 19-25, 2021.

2. Not deceased and 14 days after symptom onset/specimen collection. Please note that the definition for recovered was changed starting May 4, 2021 due to incomplete data on hospitalization which may result in an inaccurate estimation of the active cases.

CASES		DEATHS	
Persons aged 50 and over	Females	Persons aged 50 and over	Males
<b>32%</b>	<b>53%</b>	<b>93%</b>	<b>56%</b>
of cases	of cases	of deaths	of deaths

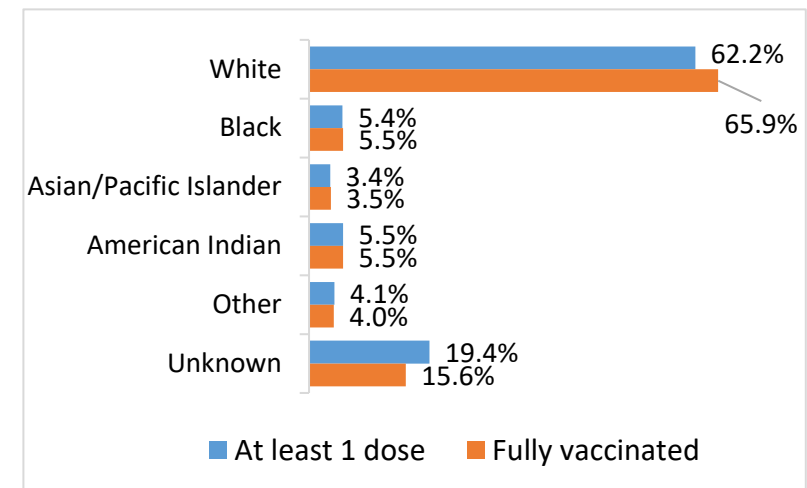
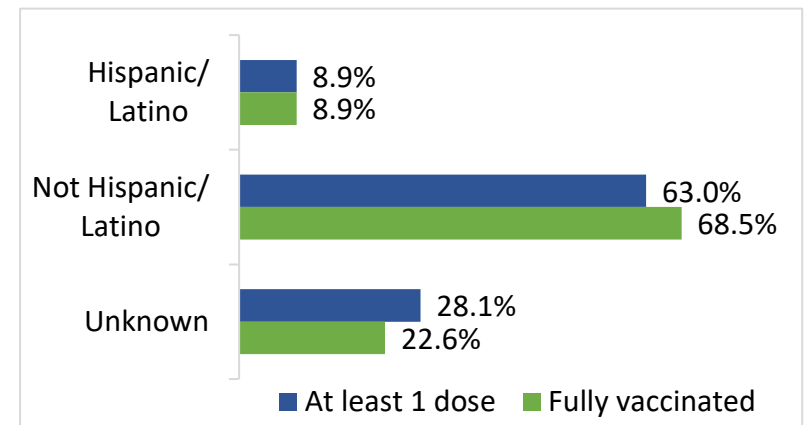
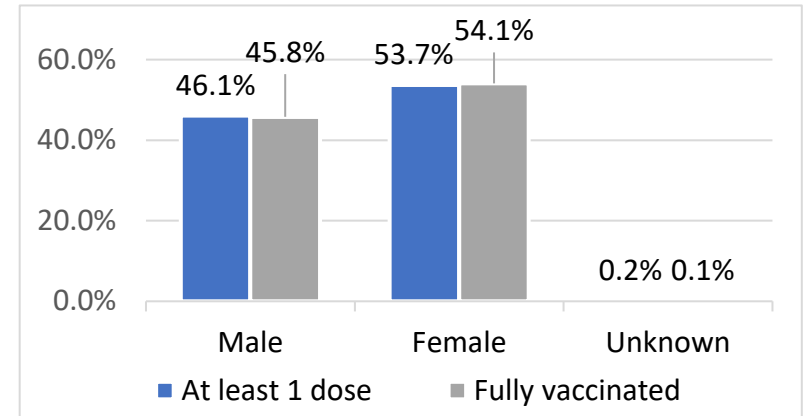
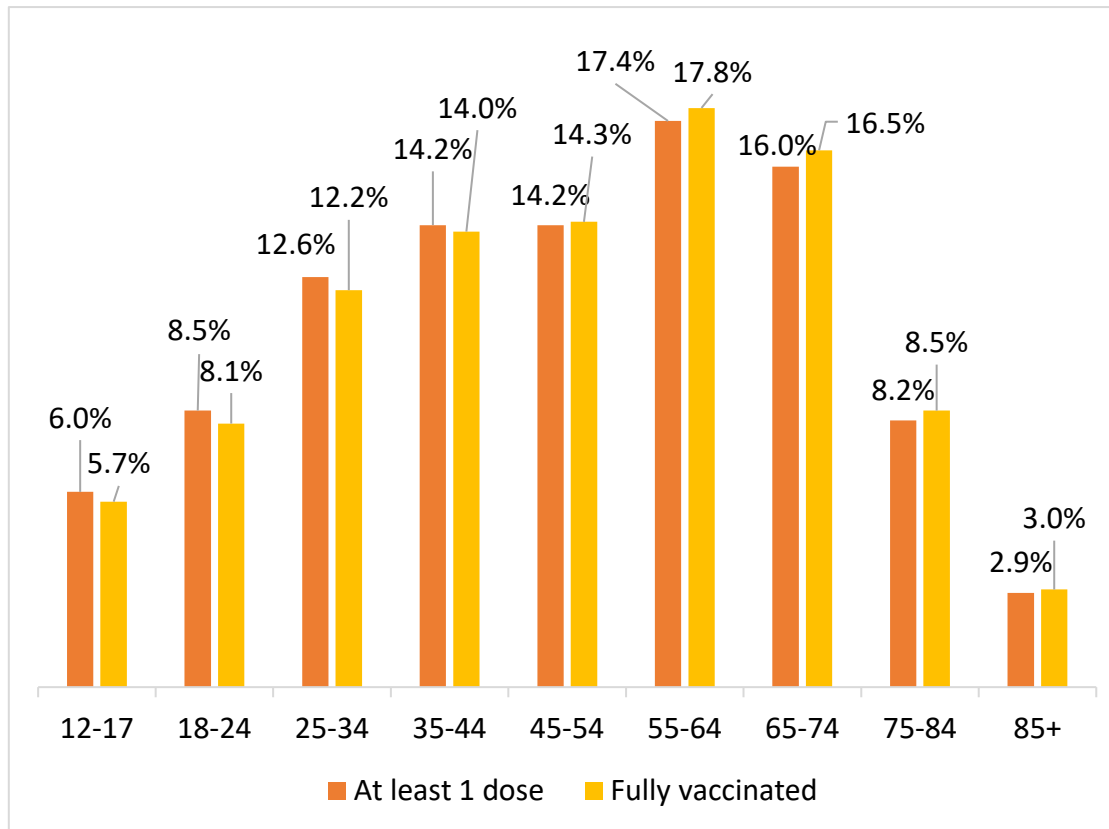
## KEY POINTS

- **9,319** cases were reported in the last week  
20.1% decrease from the week before (Sept 19-25)
- **264** deaths were reported in the past week
- **35,257 (5.7%)** cases have been hospitalized
- **\*14,445** specimens have been tested over the last 7 days according to the CDC COVID data tracker. \*Recent testing data was not available within the most current CDC data.
- **3,460,741** vaccine doses have been administered in total
- The average age of cases was **39** years and average age of individuals who died was **73** years
- The youngest case was **less than a year old** and the oldest case was **100+ years**
- The youngest individual to die from COVID-19 was **less than 15 years** and the oldest was **100+ years**

# COVID-19 VACCINE DATA BY TOTAL AND KEY METRICS

	Sep 28 – Oct 4	Total Number
Doses Administered <sup>1</sup>	66,981	3,460,741
At least 1 dose <sup>2</sup>	16,391	1,875,277
Fully vaccinated <sup>3</sup>	20,844	1,611,506

1. Doses administered amount does not include doses administered by federal entities in Oklahoma.
2. At least one does refers to individuals receiving Pfizer and Moderna COVID-19 vaccines and/or receiving single shot of J&J/Janssen Vaccine.
3. Fully vaccinated refers to individuals fully vaccinated after receiving either Pfizer and/or Moderna COVID-19 vaccines (both doses) and/or receiving single shot of J&J/Janssen Vaccine.

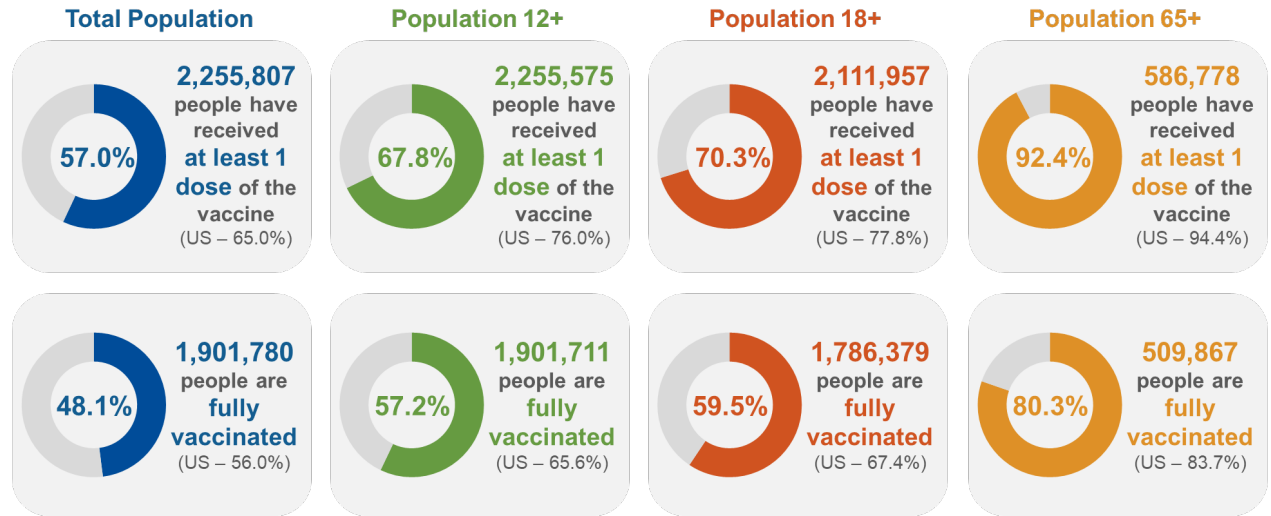


Source: COVID-19 Vaccination Reporting Specification Dataset Oklahoma State Immunization Information System (OSIIS). Data reflect information entered as of 11:59PM 10/4/2021. Data does not include doses administered by federal entities in Oklahoma

# COVID-19 VACCINATIONS IN OKLAHOMA - FEDERAL AND STATE, AS OF OCTOBER 4, 2021

	Count*	Adult Rate per 100K
<b>Total Doses Administered</b>	<b>4,211,321</b>	<b>131,446</b>
<b>Additional doses (booster/3rd) Administered</b>	<b>86,514</b>	<b>na</b>

\*Includes state and federal administered doses.



## Percent of 12+ Population with At Least 1 Dose- Oklahoma Counties

County	At Least 1 Dose (%)	County	At Least 1 Dose (%)	County	At Least 1 Dose (%)	County	At Least 1 Dose (%)	County	At Least 1 Dose (%)
Adair	47.0%	Cotton	55.1%	Jackson	63.5%	McIntosh	63.6%	Roger Mills	41.1%
Alfalfa	51.8%	Craig	64.0%	Jefferson	49.4%	Murray	52.6%	Rogers	54.1%
Atoka	40.3%	Creek	51.3%	Johnston	50.3%	Muskogee	64.1%	Seminole	62.8%
Beaver	36.1%	Custer	59.1%	Kay	51.4%	Noble	74.1%	Sequoyah	47.3%
Beckham	49.8%	Delaware	47.3%	Kingfisher	56.4%	Nowata	52.9%	Stephens	57.4%
Blaine	56.3%	Dewey	30.8%	Kiowa	62.9%	Okfuskee	54.4%	Texas	53.2%
Bryan	45.3%	Ellis	41.0%	Latimer	38.8%	Oklahoma	78.6%	Tillman	56.3%
Caddo	75.3%	Garfield	60.2%	LeFlore	45.8%	Okmulgee	50.9%	Tulsa	73.8%
Canadian	69.2%	Garvin	56.7%	Lincoln	47.7%	Osage	41.4%	Wagoner	55.8%
Carter	54.5%	Grady	44.5%	Logan	39.8%	Ottawa	47.2%	Washington	53.4%
Cherokee	56.8%	Grant	52.7%	Love	50.2%	Pawnee	59.0%	Washita	48.4%
Choctaw	40.0%	Greer	42.4%	Major	58.8%	Payne	56.4%	Woods	48.3%
Cimarron	34.8%	Harmon	58.0%	Marshall	54.9%	Pittsburg	53.7%	Woodward	45.7%
Cleveland	61.9%	Harper	52.9%	Mayes	53.3%	Pontotoc	63.4%		
Coal	46.3%	Haskell	48.3%	McClain	58.1%	Pottawatomie	56.8%		
Comanche	72.5%	Hughes	53.6%	McCurtain	43.3%	Pushmataha	39.9%		

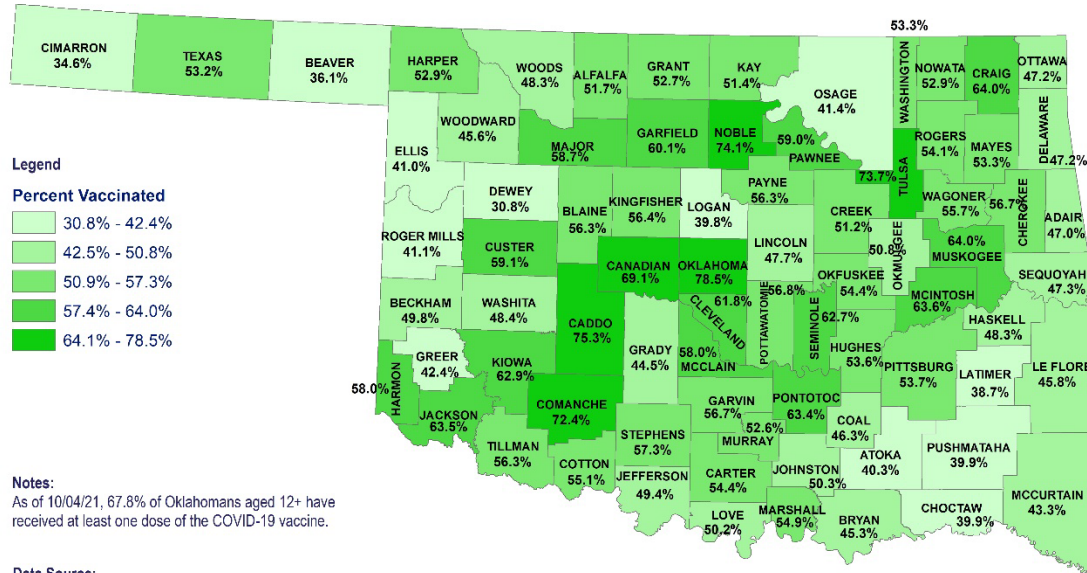
Source: CDC COVID Data Tracker – COVID-19 Vaccinations in the United States and COVID-19 Integrated County View. Posted: 10/05/2021

## COVID- 19 VACCINE DATA

		Total Population >12 years of age	People who received at least 1 dose	People who are fully vaccinated
<b>Oklahoma</b>		3,325,223	1,875,277 (56.4%)	1,611,506 (48.5%)
<b>Gender</b>				
	Male	1,637,286 (49.2%)	864,837 (52.8%)	738,617 (45.1%)
	Female	1,687,937 (50.8%)	1,007,625 (59.7%)	871,086 (51.6%)
	Unknown		2,815	1,803
<b>Age group</b>				
	12-17	320,490 (9.6%)	113,254 (35.3%)	92,491 (28.9%)
	18-24	380,905 (11.5%)	159,714 (41.9%)	129,857 (34.1%)
	25-34	543,593 (16.3%)	237,182 (43.6%)	196,067 (36.1%)
	35-44	497,873 (15.0%)	265,835 (53.4%)	226,117 (45.4%)
	45-54	453,536 (13.6%)	265,959 (58.6%)	229,806 (50.7%)
	55-64	493,694 (14.8%)	325,862 (66.0%)	287,144 (58.2%)
	65-74	368,050 (11.1%)	299,135 (81.3%)	265,977 (72.3%)
	75-84	192,919 (5.8%)	153,398 (79.5%)	136,275 (70.6%)
	85+	74,163 (2.2%)	54,830 (73.9%)	47,747 (64.4%)
<b>Race</b>				
	White	2,610,851 (78.5%)	1,166,556 (44.7%)	1,062,360 (40.7%)
	Black	282,592 (8.5%)	101,734 (36.0%)	88,634 (31.4%)
	Asian/PI	94,874 (2.9%)	63,692 (67.1%)	57,075 (60.2%)
	American Indian	336,906 (10.1%)	103,303 (30.7%)	88,483 (26.3%)
	Other	-	77,069	64,037
	Unknown	-	362,923	250,917
<b>Ethnicity</b>				
	Hispanic or Latino	323,153 (9.7%)	166,046 (51.4%)	143,588 (44.4%)
	Not Hispanic or Latino	3,002,070 (90.3%)	1,182,131 (39.4%)	1,104,000 (36.8%)
	Unknown	-	527,100	363,918

Note: Fully vaccinated refers to individuals completing series after receiving either Pfizer and/or Moderna COVID-19 vaccines (both doses) and/or receiving single shot of J&J/Janssen Vaccine  
 Data Source: 1. Single-race Population Estimates, United States, 2010-2019. July 1st resident population by state, age, sex, single-race, and Hispanic origin, on CDC WONDER Online Database. Vintage 2019 estimates released by U.S. Census Bureau on June 25, 2020 COVID-19. 2. Vaccination Reporting Specification (CVRS) Dataset - Oklahoma State Immunization Information System (OSIIS); Data reflect information entered as of 11:59PM 10/4/2021. Data does not include doses administered by federal entities in Oklahoma

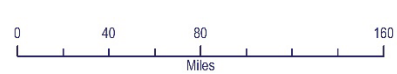
# OKLAHOMA COVID-19 AT LEAST 1 DOSE COUNTY LEVEL VACCINE ADMINISTRATION FOR AGES 12+ AND 65+



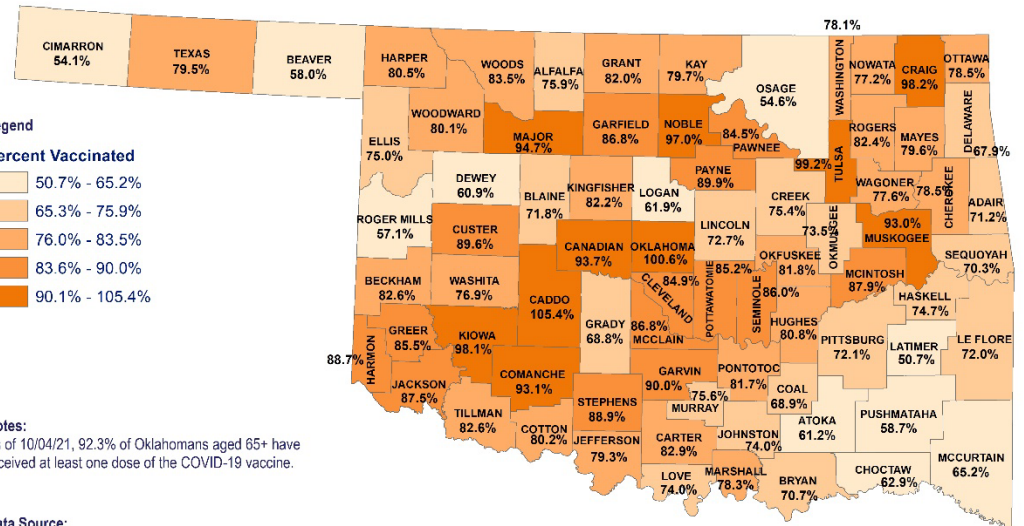
**Notes:**  
As of 10/04/21, 67.8% of Oklahomans aged 12+ have received at least one dose of the COVID-19 vaccine.

**Data Source:**  
CDC COVID Data Tracker, County Level Vaccination Data for Oklahoma. Posted 10/04/21.

Projection/Coordinate System: USGS Albers Equal Area Conic



**Disclaimer:** This map is a compilation of records, information and data from various city, county and state offices and other sources, affecting the area shown, and is the best representation of the data available at the time. The map and data are to be used for reference purposes only. The user acknowledges and accepts all inherent limitations of the map, including the fact that the data are dynamic and in a constant state of maintenance.

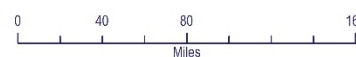


**Notes:**  
As of 10/04/21, 92.3% of Oklahomans aged 65+ have received at least one dose of the COVID-19 vaccine.

**Data Source:**  
CDC COVID Data Tracker, County Level Vaccination Data for Oklahoma. Posted 10/04/21.

Projection/Coordinate System: USGS Albers Equal Area Conic

Created: 10.04.2021

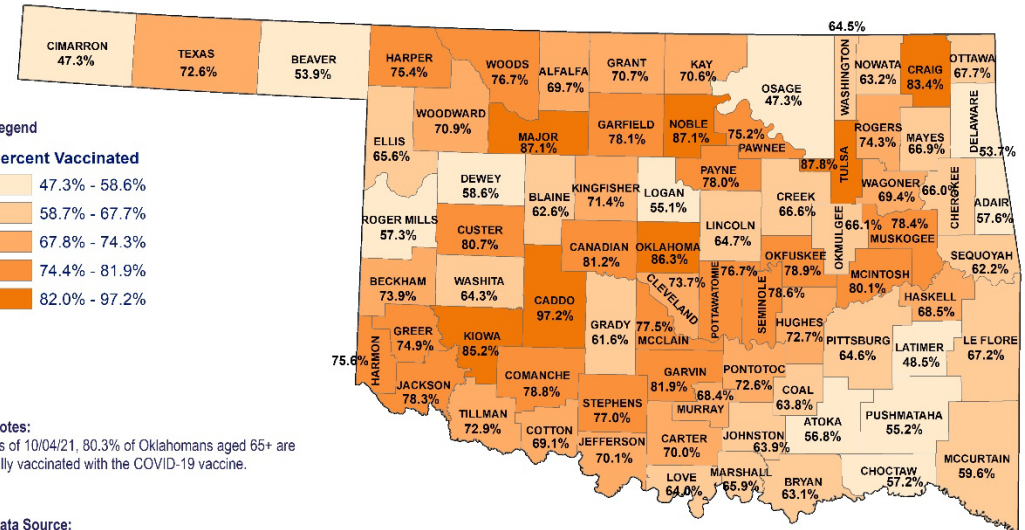
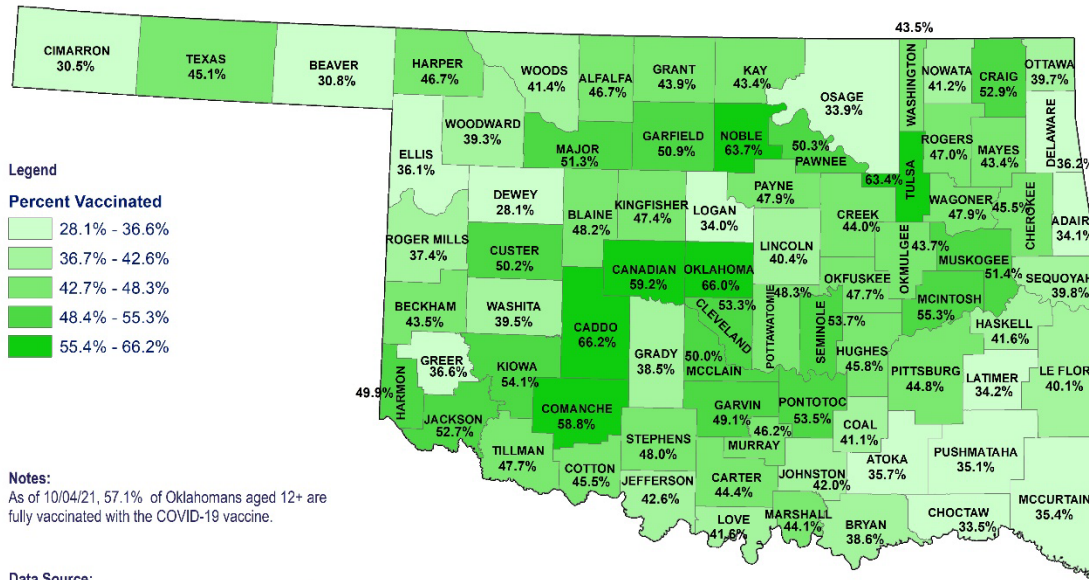


**Disclaimer:** This map is a compilation of records, information and data from various city, county and state offices and other sources, affecting the area shown, and is the best representation of the data available at the time. The map and data are to be used for reference purposes only. The user acknowledges and accepts all inherent limitations of the map, including the fact that the data are dynamic and in a constant state of maintenance.





# OKLAHOMA COVID-19 FULLY VACCINATED COUNTY LEVEL VACCINE ADMINISTRATION FOR AGES 12+ AND 65+

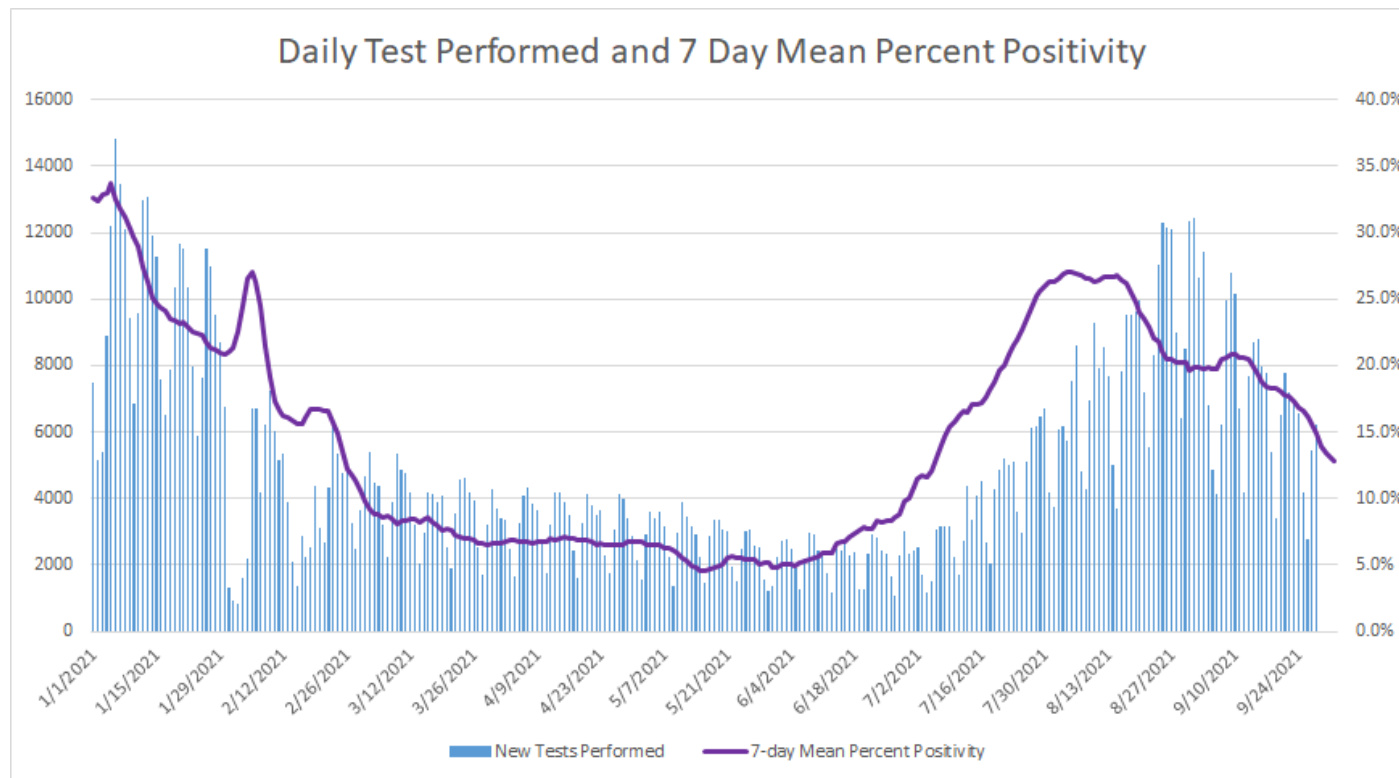


## DISEASE TESTING

Sept 26 – Oct 02	
Specimens tested, count	14,445*
Specimens positive, count	10,590
Percent positive	12.8

Source: CDC COVID Data Tracker CDC | Data as of: Tuesday, October 5, 2021 12:23 PM ET. Posted: Tuesday, October 5, 2021 2:11 PM ET  
 \*(Recent testing data was not available within the most current CDC data.)

## COVID-19 DAILY TESTS PERFORMED AND 7 DAY MEAN PERCENT POSITIVITY



Oklahoma, October 5, 2021

Source: CDC COVID Data Tracker CDC | Data as of: Tuesday, October 5, 2021 12:23 PM ET. Posted: Tuesday, October 5, 2021 2:11 PM ET  
 (Recent testing data was not available within the most current CDC data.)

## COVID-19 VARIANT STRAINS

Genetic variants of SARS-CoV-2 have been emerging and circulating around the world throughout the COVID-19 pandemic.

- A variant has one or more mutations that differentiate it from other variants in circulation. As expected, multiple variants of SARS-CoV-2 have been documented in the United States and globally throughout this pandemic.

<b>SARS-CoV-2 Sequencing Data, Oklahoma, January 1, 2021-October 4, 2021</b>		
<b>Variant Designation and Strain Name</b>	<b>SARS-CoV-2 Strain Count</b>	<b>SARS-CoV-2 Strain Percentage</b>
No Concern	377	5.8%
Variants of Concern	5,549	84.8%
B.1.617.2 (Delta)	5,549	100.0%
Variants to Watch	47	0.7%
C.37 (Lambda)	47	100.0%
Variants Being Monitored	570	8.7%
B.1.1.7 (Alpha)	471	82.6%
B.1.351 (Beta)	7	1.2%
B.1.427/429 (Epsilon)	24	4.2%
B.1.525 (Eta)	2	0.4%
P.1 (Gamma)	35	6.1%
B.1.526/526.1 (Iota)	15	2.6%
B.1.617.1 (Kappa)	1	0.2%
B.1.621 (Mu)	15	2.6%
<b>Grand Total</b>	<b>6,543</b>	<b>100.0%</b>

Additional information on variant classifications and definitions can be found [here](#).



## COVID-19 VACCINE BREAKTHROUGH INFECTIONS IN OKLAHOMA

- Total Number Reported Vaccine Breakthrough Cases: 11,703

### VACCINE BREAKTHROUGH CASES, HOSPITALIZATIONS AND DEATHS BY VACCINE TYPE AS OF OCT 4, 2021

Vaccine Brand	Number of Fully Vaccinated OK Residents*	Number of Vaccine Breakthrough Cases**	Cumulative Breakthrough Incidence Rate Per 100,000 Fully Vaccinated OK Residents	Hospitalizations	Deaths
Johnson and Johnson	119,690	1,178	984.21	79	17
Moderna	760,753	3,886	510.81	213	47
Pfizer	1,015,083	6,639	654.04	409	84
<b>Total</b>	<b>1,895,526</b>	<b>11,703</b>	<b>617.4</b>	<b>701</b>	<b>148</b>

\*Vaccine Denominator: Represents the number of people who have received the second dose in a two-dose COVID-19 vaccine series or one dose of the single-shot Johnson and Johnson's Janssen COVID-19 vaccine.

\*\*Vaccine breakthrough cases is defined as an individual with a COVID-19 positive laboratory results (PCR/Antigen) and documentation of COVID-19 vaccination that meets the definition of fully vaccinated. (Individuals are considered fully vaccinated  $\geq 2$  weeks after receiving the last dose in the COVID-19 vaccine series.)

Source: CDC COVID Data Tracker—COVID-19 Vaccinations in the United States. Accessed: 10/04/21

## PROPORTION OF BREAKTHROUGH CASES BY MONTH OF ONSET AS OF OCTOBER 4, 2021

Month	Breakthrough Cases**	Unvaccinated Cases	Total	Percent of Cases Vaccinated	Percent of Cases Unvaccinated
February 2021	7	23,339	23,346	0.03%	99.97%
March 2021	41	9,128	9,169	0.45%	99.55%
April 2021	195	6,615	6,810	2.86%	97.14%
May 2021	261	4,220	4,481	5.82%	94.18%
June 2021	447	5,693	6,140	7.28%	92.72%
July 2021	2,637	29,331	31,968	8.25%	91.75%
August 2021	4,211	72,997	77,208	5.45%	94.55%
September 2021	3,898	45,366	49,264	7.91%	92.09%
October 2021	9	532	541	1.66%	98.34%

\*\*Vaccine breakthrough case is defined as an individual with a COVID-19 positive laboratory results (PCR/Antigen) and documentation of COVID-19 vaccination that meets the definition of fully vaccinated. (Individuals are considered fully vaccinated  $\geq 2$  weeks after receiving the last dose in the COVID-19 vaccine series.)

## COVID-19 REINFECTIONS\* AND BREAKTHROUGH CASES\*\* BY MONTH AS OF OCT 4, 2021

Month	Approximate Number of Cases Eligible for Reinfection	Reinfection Cases to Date by Month	Reinfection Rate per 100,000 eligible cases	Oklahoma's Fully Vaccinated Population Eligible for a Breakthrough Case	Breakthrough Cases to Date by Month	Breakthrough Rate per 100,000 Fully Vaccinated	Reinfection to Breakthrough Rate Ratio
May 2021	410,217	1,470	358.3	1,335,445	504	37.7	9.50
June 2021	433,575	1,599	368.8	1,518,992	951	62.6	5.89
July 2021	442,644	2,271	513.1	1,593,194	3,588	225.2	2.28
August 2021	449,454	4,025	895.5	1,734,367	7,799	449.7	1.99
September 2021	453,935	5,174	1,139.8	1,883,414	11,697	621.1	1.84
October 2021	460,075	5,186	1,127.2	1,899,919	11,706	616.1	1.83

\*For a case to be a reinfection, the cases must have happened at least 90 days apart.

\*\*Vaccine breakthrough case is defined as an individual with a COVID-19 positive laboratory results (PCR/Antigen) and documentation of COVID-19 vaccination that meets the definition of fully vaccinated. (Individuals are considered fully vaccinated  $\geq 2$  weeks after receiving the last dose in the COVID-19 vaccine series.)

## DISTRIBUTION OF RECENT COVID-19 HOSPITAL ADMISSIONS BY VACCINATION STATUS AND AGE GROUP AS OF OCTOBER 4, 2021

Vaccination Status	Age Group	Hospital Admissions in the last 30 days***	Percentage within Vaccination Status Category	Percentage of Total Hospitalizations
Non-Vaccinated	Under 1- 4	44	2.2%	1.9%
	5-17	37	1.9%	1.6%
	18-35	249	12.6%	10.9%
	36-49	367	18.5%	16.0%
	50-64	580	29.3%	25.3%
	65+	703	35.5%	30.7%
	Unknown	1	0.1%	0.0%
	Total	1,981	100.0%	86.6%
Fully Vaccinated*	5-17	1	0.4%	0.0%
	18-35	2	0.9%	0.1%
	36-49	9	3.9%	0.4%
	50-64	48	20.7%	2.1%
	65+	172	74.1%	7.5%
	Total	232	100.0%	10.1%
Partially Vaccinated**	5-17	2	2.7%	0.1%
	18-35	6	8.0%	0.3%
	36-49	7	9.3%	0.3%
	50-64	22	29.3%	1.0%
	65+	38	50.7%	1.7%
	Total	75	100.0%	3.3%
Total Hospitalizations	2,288			

\*Fully Vaccinated Vaccine breakthrough cases are defined as an individual with a COVID-19 positive laboratory results (PCR/Antigen) and documentation of COVID-19 vaccination that meets the definition of fully vaccinated. (Individuals are considered fully vaccinated  $\geq 2$  weeks after receiving the last dose in the COVID-19 vaccine series.)

\*\*Partially Vaccinated Vaccine breakthrough cases is defined as an individual with a COVID-19 positive laboratory result (PCR/Antigen) and documentation of one COVID-19 vaccination. (Individuals are considered partially vaccinated  $\geq 2$  weeks after receiving the first dose in a 2-dose COVID-19 vaccine series.)

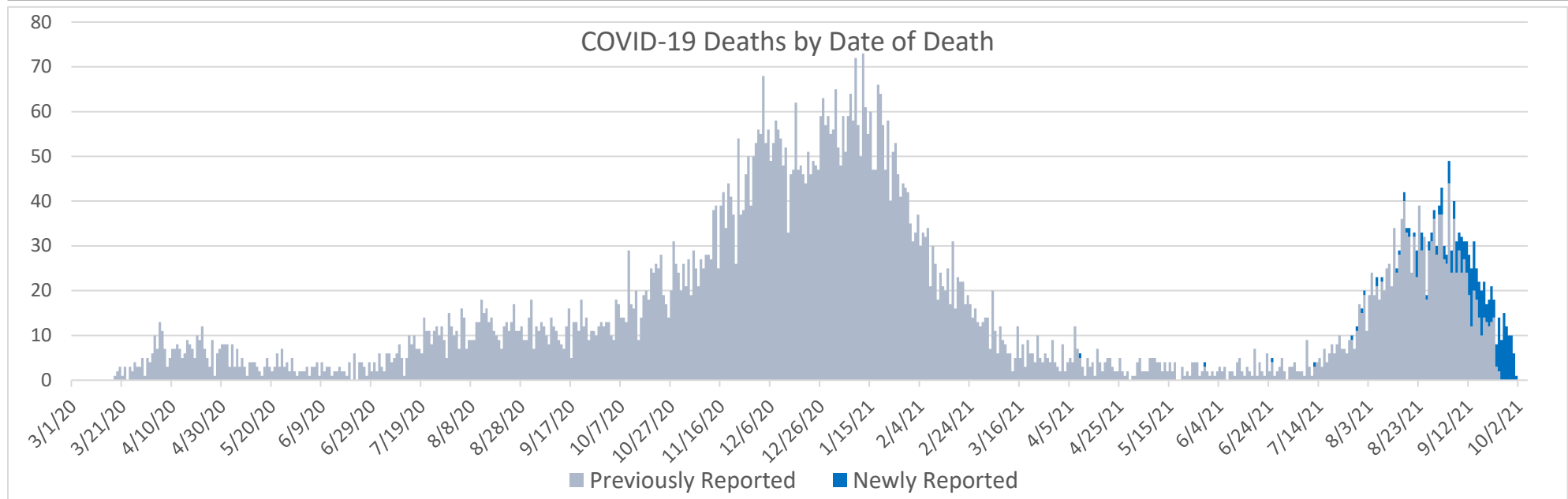
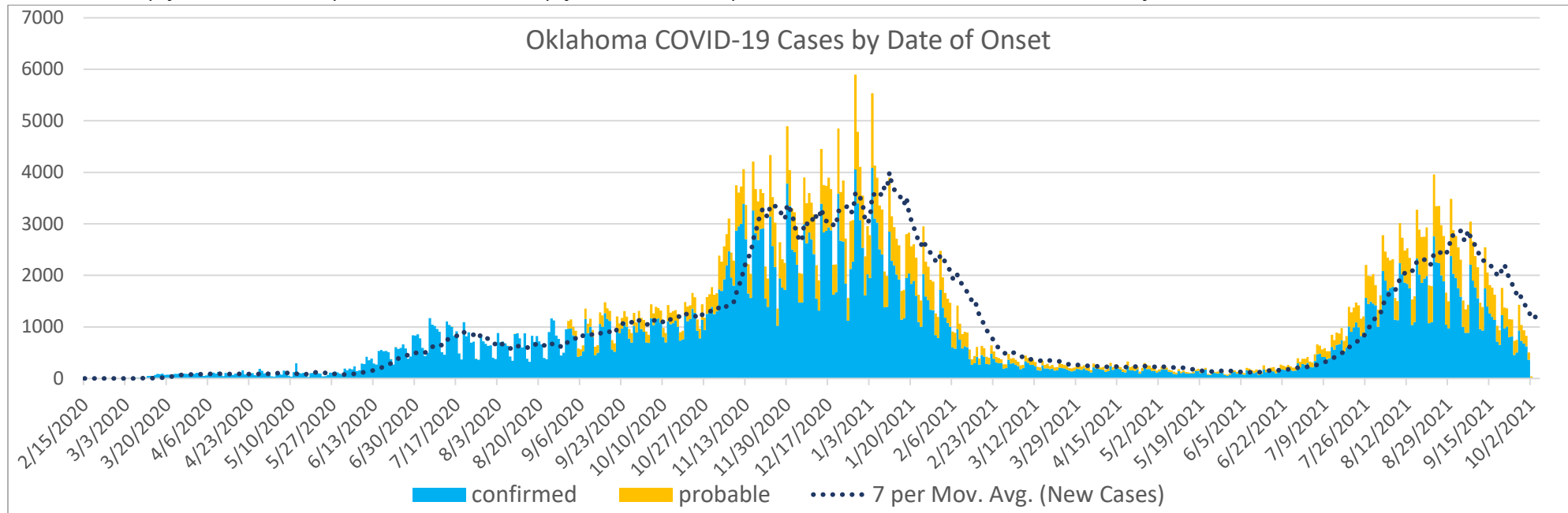
\*\*\*Numbers based on hospital admission date within the past 30 days.

## EPIDEMIOLOGICAL ESTIMATES

	Estimate	Notes / Interpretation
<b>Cases</b>		
Cumulative incidence	15,644.7 (per 100,000 persons)	From March 7, 2020 to October 2, 2021 there were about 15,644 (per 100,000) new cases of COVID-19 in Oklahoma.
Absolute change in cumulative incidence from previous week	-59.3 (per 100,000 persons)	Compared to September 19 - September 25 there were 43.3 (per 100,000) less cases of COVID-19 reported in Oklahoma during the past week (September 26 - October 2).
<b>Disease Severity</b>		
Case-fatality risk (crude)	1.5%	The estimate is not adjusted for the lag time from reporting to death (i.e., delay between the time someone dies and the time their death is reported). The fatality estimate could be lower due to cases that were undiagnosed or had milder symptoms.
Cumulative Hospitalization rate (overall)	891.0 (per 100,000 persons)	About 891 people per 100,000 have ever been hospitalized for COVID-19 during this outbreak.

# CASES AND DEATHS

New cases (by date of onset) and new deaths (by date of death) of COVID-19 in Oklahoma, February 2020–October 2021



Please note the different axes for new cases (top—from 0 to 7,000 for new cases) and new deaths (bottom—from 0 to 80 for new deaths). Additionally, a 7-day lag has been applied to the COVID-19 case trend line based on information.



## DEMOGRAPHIC INFORMATION AS OF OCTOBER 5, 2021

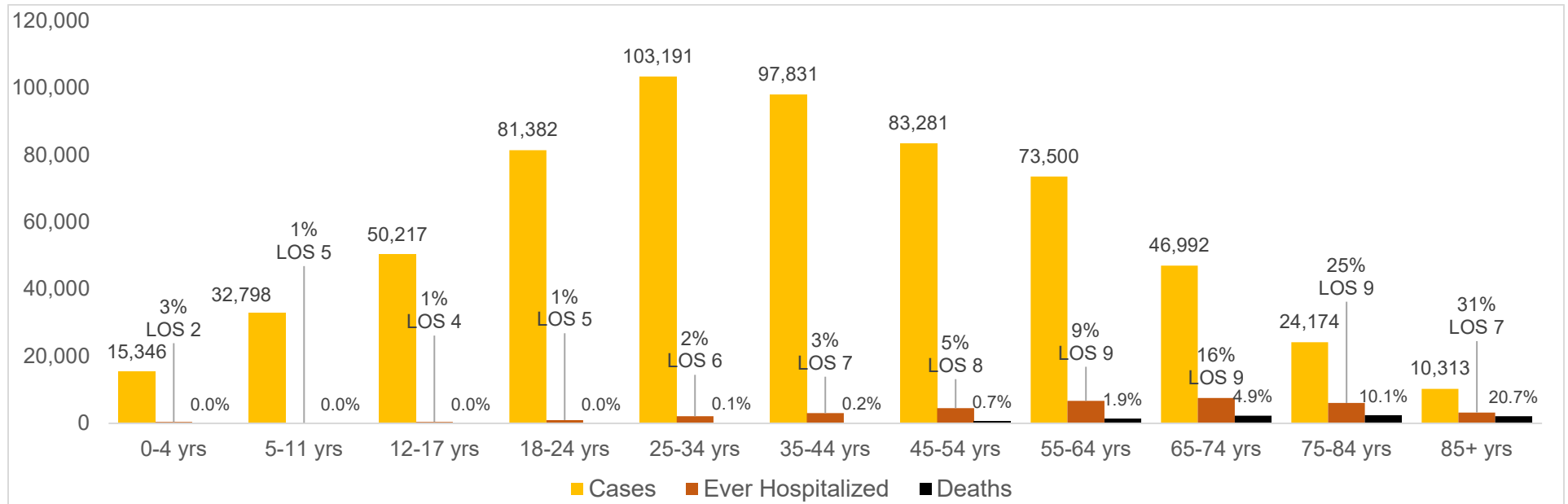
		Cases count (%) <sup>1</sup>		Deaths count (%) <sup>1</sup>		Cumulative Incidence Rate <sup>2</sup>	Cumulative Mortality Rate <sup>2</sup>
<b>Oklahoma</b>		<b>619,056</b>		<b>9,213</b>		<b>15,644.7</b>	<b>232.8</b>
<b>Gender</b>							
	Male	<b>291,553</b>	<b>(47.1)</b>	<b>5,168</b>	<b>(56.1)</b>	<b>14,928.1</b>	<b>264.6</b>
	Female	<b>327,503</b>	<b>(52.9)</b>	<b>4,045</b>	<b>(43.9)</b>	<b>16,457.2</b>	<b>203.3</b>
	Unknown	<b>0</b>	<b>(0.0)</b>	<b>0</b>	<b>(0.0)</b>		
<b>Age group</b>							
	Under 1- 4	<b>15,346</b>	<b>(2.5)</b>	<b>0</b>	<b>(0.0)</b>	<b>6,005.5</b>	<b>0.0</b>
	5-11	<b>32,798</b>	<b>(5.3)</b>	<b>0</b>	<b>(0.0)</b>	<b>8,717.9</b>	<b>0.0</b>
	12-17	<b>50,217</b>	<b>(8.1)</b>	<b>5</b>	<b>(0.1)</b>	<b>15,668.8</b>	<b>1.6</b>
	18-24	<b>81,382</b>	<b>(13.1)</b>	<b>16</b>	<b>(0.2)</b>	<b>21,365.4</b>	<b>4.2</b>
	25-34	<b>103,191</b>	<b>(16.7)</b>	<b>88</b>	<b>(1.0)</b>	<b>18,983.1</b>	<b>16.2</b>
	35-44	<b>97,831</b>	<b>(15.8)</b>	<b>235</b>	<b>(2.6)</b>	<b>19,649.8</b>	<b>47.2</b>
	45-54	<b>83,281</b>	<b>(13.5)</b>	<b>624</b>	<b>(6.8)</b>	<b>18,362.6</b>	<b>137.6</b>
	55-64	<b>73,500</b>	<b>(11.9)</b>	<b>1,392</b>	<b>(15.1)</b>	<b>14,887.8</b>	<b>282.0</b>
	65-74	<b>46,992</b>	<b>(7.6)</b>	<b>2,285</b>	<b>(24.8)</b>	<b>12,767.8</b>	<b>620.8</b>
	75-84	<b>24,174</b>	<b>(3.9)</b>	<b>2,438</b>	<b>(26.5)</b>	<b>12,530.6</b>	<b>1,263.7</b>
	85+	<b>10,313</b>	<b>(1.7)</b>	<b>2,130</b>	<b>(23.1)</b>	<b>13,905.9</b>	<b>2,872.1</b>
	Unknown	<b>31</b>	<b>(0.0)</b>				
<b>Race</b>							
	American Indian or Alaska Native	<b>62,926</b>	<b>(10.2)</b>	<b>799</b>	<b>(8.7)</b>	<b>20,484.9</b>	<b>260.1</b>
	Asian or Pacific Islander	<b>10,353</b>	<b>(1.7)</b>	<b>99</b>	<b>(1.1)</b>	<b>11,691.3</b>	<b>111.8</b>
	Black or African American	<b>36,538</b>	<b>(5.9)</b>	<b>601</b>	<b>(6.5)</b>	<b>12,700.9</b>	<b>208.9</b>
	Multiracial/Other	<b>21,665</b>	<b>(3.5)</b>	<b>253</b>	<b>(2.7)</b>	<b>5,236.2</b>	<b>61.1</b>
	White	<b>348,304</b>	<b>(56.3)</b>	<b>6,668</b>	<b>(72.4)</b>	<b>12,238.8</b>	<b>234.3</b>
	Unknown	<b>139,270</b>	<b>(22.5)</b>	<b>793</b>	<b>(8.6)</b>		
<b>Ethnicity</b>							
	Hispanic or Latino	<b>58,744</b>	<b>(9.5)</b>	<b>470</b>	<b>(5.1)</b>	<b>13,690.8</b>	<b>109.5</b>
	Not Hispanic or Latino	<b>392,529</b>	<b>(63.4)</b>	<b>7,665</b>	<b>(83.2)</b>	<b>11,170.4</b>	<b>218.1</b>
	Unknown/Other	<b>167,783</b>	<b>(27.1)</b>	<b>1,078</b>	<b>(11.7)</b>		

1. Percentages may not add up to 100 due to rounding. 2. Rate per 100,000 population based on 2019 Census Population data.

## NEW CASES, HOSPITALIZATIONS, AND DEATHS BY AGE GROUP FOR WEEK OF SEPT 26-OCT 2

Age group	Percentage of Population Fully Vaccinated	New Cases (%)	New Hospitalizations (%)	New Deaths (%)
Under 1- 4	-	<b>461 (4.9%)</b>	<b>8 (1.6%)</b>	<b>0 (0.0%)</b>
5-11	-	<b>897 (9.6%)</b>	<b>7 (1.4%)</b>	<b>0 (0.0%)</b>
12-17	<b>28.9%</b>	<b>871 (9.3%)</b>	<b>3 (0.6%)</b>	<b>1 (0.4%)</b>
18-24	<b>34.1%</b>	<b>1015 (10.9%)</b>	<b>16 (3.2%)</b>	<b>1 (0.4%)</b>
25-34	<b>36.1%</b>	<b>1485 (15.9%)</b>	<b>41 (8.2%)</b>	<b>4 (1.5%)</b>
35-44	<b>45.4%</b>	<b>1430 (15.3%)</b>	<b>52 (10.5%)</b>	<b>15 (5.7%)</b>
45-54	<b>50.7%</b>	<b>1039 (11.1%)</b>	<b>62 (12.5%)</b>	<b>44 (16.7%)</b>
55-64	<b>58.2%</b>	<b>976 (10.5%)</b>	<b>83 (16.7%)</b>	<b>55 (20.8%)</b>
65-74	<b>72.3%</b>	<b>687 (7.4%)</b>	<b>104 (20.9%)</b>	<b>68 (25.8%)</b>
75-84	<b>70.6%</b>	<b>307 (3.3%)</b>	<b>84 (16.9%)</b>	<b>49 (18.6%)</b>
85+	<b>64.4%</b>	<b>151 (1.6%)</b>	<b>37 (7.4%)</b>	<b>27 (10.2%)</b>
Unknown	-	<b>0 (0.0%)</b>	<b>0 (0.0%)</b>	<b>0 (0.0%)</b>

## CUMULATIVE CASES, PERCENT HOSPITALIZED, AVERAGE LENGTH OF STAY (JULY 2021 CASES) AND DEATHS BY AGE GROUP



## AT-RISK SETTINGS

### HEALTHCARE & NON-HEALTHCARE

Status	Non-Healthcare Worker count (%)	Healthcare Worker count (%)
Active	12,736 (2.1)	252 (1.3)
Deceased	9,128 (1.5)	85 (0.5)
Recovered	578,301 (96.4)	18,554 (98.2)
<b>Total</b>	<b>600,165</b>	<b>18,891</b>

### LONG TERM CARE (LTC) FACILITIES<sup>2</sup>

	Cases (%)	Deaths (%)
Residents	8,973 (62.1)	1,748 (98.8)
Staff	5,485 (37.9)	22 (1.2)
<b>Total</b>	<b>14,458</b>	<b>1,770</b>

<sup>2</sup>Long term care facility or nursing home.

### CORRECTIONAL FACILITIES<sup>1</sup>

	Cases (%)	Deaths (%)
Inmates	5,391 (75.6%)	57 (91.9%)
Staff	1,741 (24.4%)	5 (8.1%)
<b>Total</b>	<b>7,132</b>	<b>62</b>

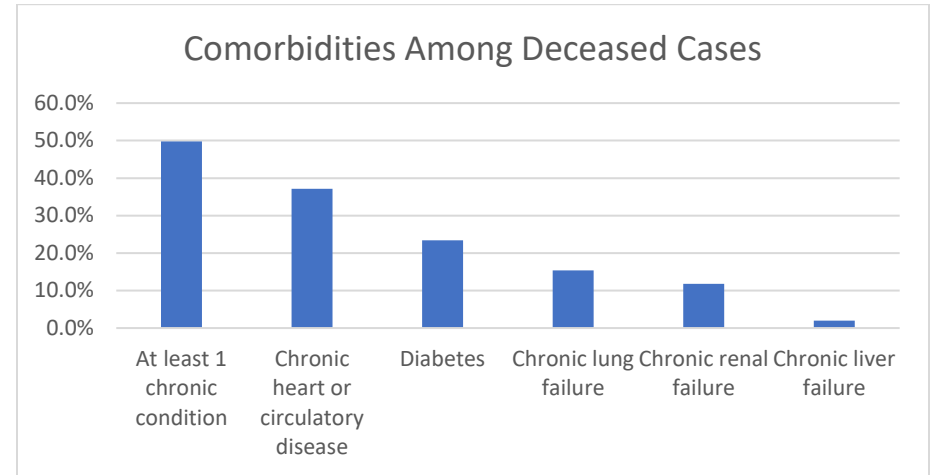
<sup>1</sup>Correctional facilities include prisons, jails, and juvenile detention center

*Detailed counts of LTC Cases by County and Facility can be found at the end of this report.*

## COMORBIDITIES AMONG DECEASED CASES

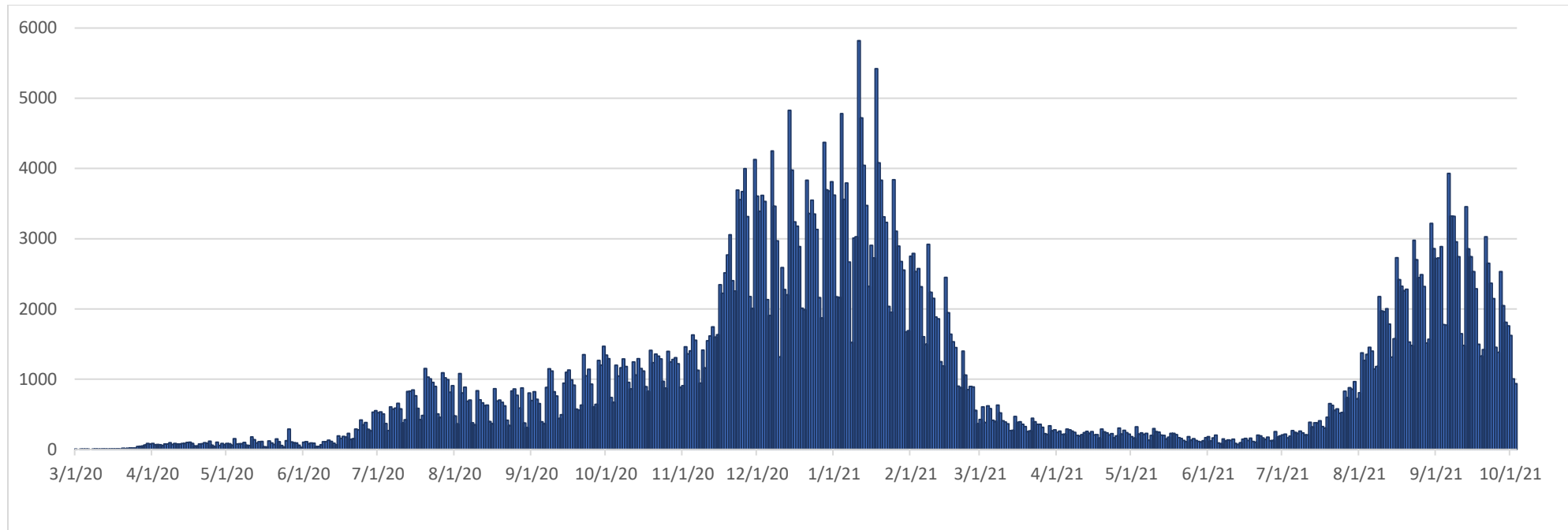
Comorbidities	Number (%)
At least 1 chronic condition <sup>4</sup>	4,583 (49.7%)
Chronic heart or circulatory disease	3,420 (37.1%)
Diabetes	2,157 (23.4%)
Chronic lung failure	1,417 (15.4%)
Chronic renal failure	1,084 (11.8%)
Chronic liver failure	180 (2.0%)

<sup>4</sup>Chronic conditions include chronic heart or circulatory disease, diabetes, chronic lung failure, chronic liver failure and renal failure.



## RECOVERED CASES

### Distribution of recovered cases of COVID-19, March 2020 – October 2021, Oklahoma

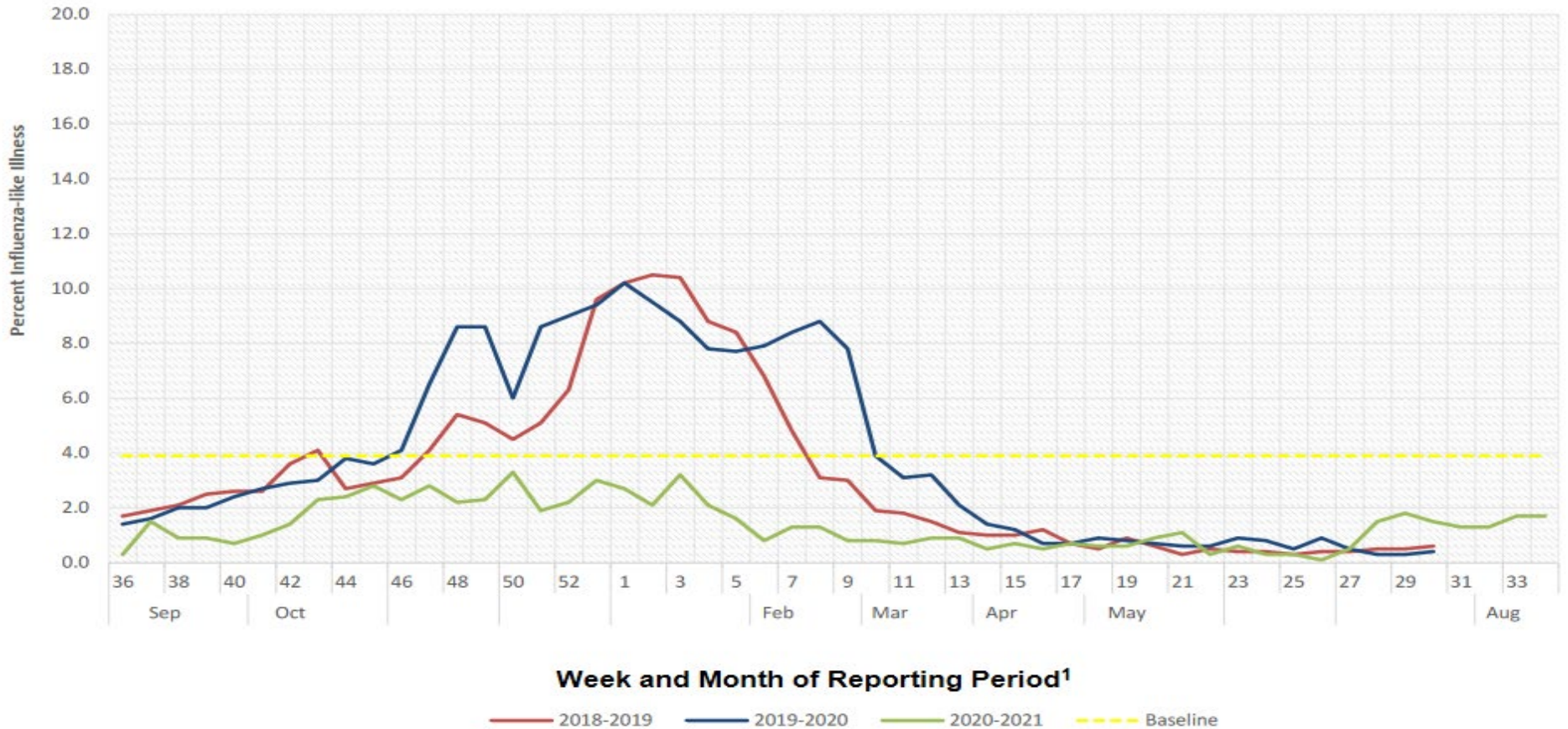


Recovered case: is not deceased and 14 days after symptom onset/specimen collection. Please note that the definition for recovered was changed starting May 4, 2021 due to incomplete data on hospitalizations which may result in an inaccurate estimation of the active cases.

# SYMPTOMS CRITERIA

## WEEKLY PERCENT OF INFLUENZA-LIKE ILLNESS BASED ON TOTAL PATIENT VISITS TO SENTINEL CLINICIANS, OKLAHOMA VIRAL RESPIRATORY ILLNESS SURVEILLANCE SYSTEM, 2018-2021

Week ending August 28, 2021 (Week 34)



<sup>1</sup>These units correspond to the number of weeks in a year and allow for a comparison between multiple seasons.

**Interpretation:** Data on Influenza-Like Illness (ILI) increased to 1.5% of outpatient visits exhibiting fever with cough or sore throat. The most current week's value of 1.5% was below Oklahoma's baseline ILI of 3.9%.

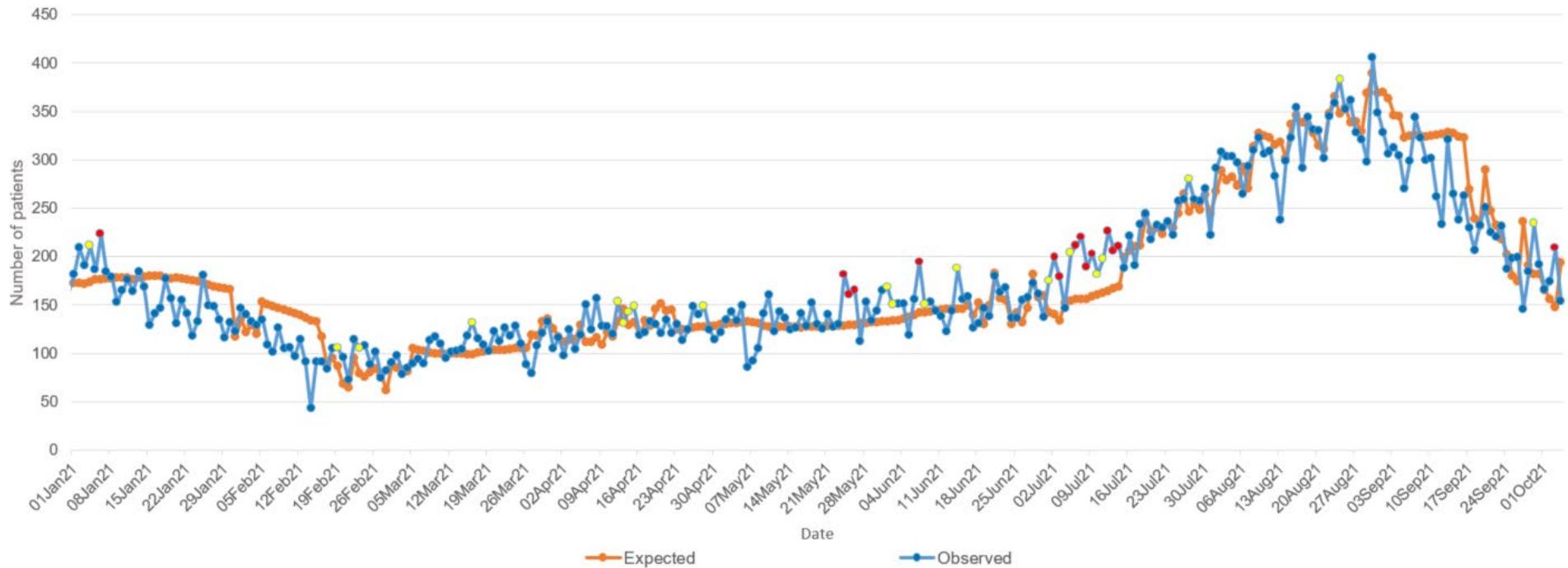
**Note:** Data current up to week ending August 28, 2021 (Week 34). ILI graph will be updated monthly between Week 21 through Week 39

**Source:** <https://oklahoma.gov/content/dam/ok/en/health/health2/aem-documents/prevention-and-preparedness/acute-disease-service/disease-information/flu-view>



# COVID-19 RELATED EMERGENCY DEPARTMENT VISITS

Oklahoma State Syndromic Surveillance of  
COVID-19 related ED Visits  
January 01, 2021 – October 04, 2021



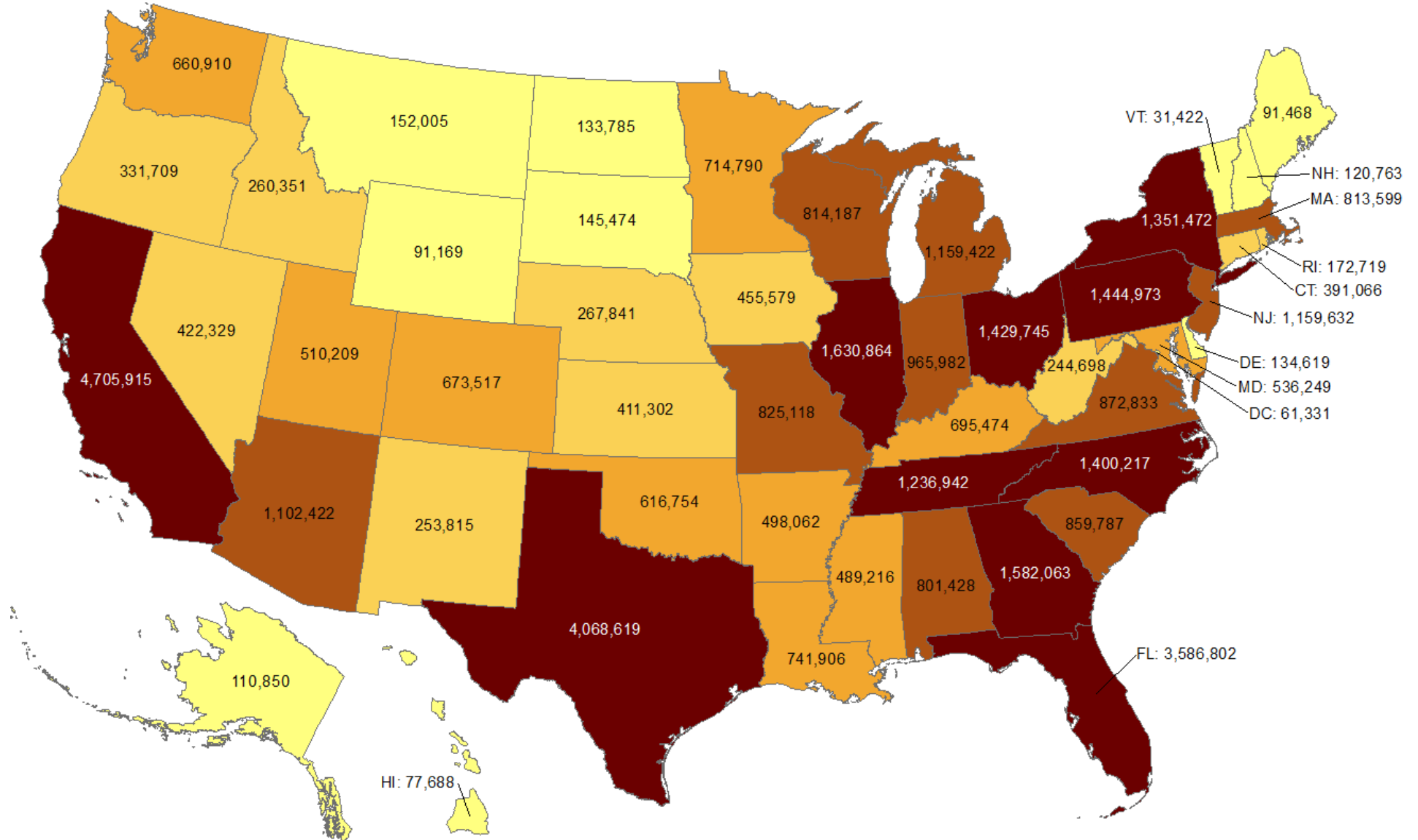
**Interpretation:** Data from syndromic surveillance shows that the number of COVID-19 related emergency department visits were within the expected range for the past 2 weeks as indicated by no red dots on the observed line.

.....

# OKLAHOMA IN COMPARISON

## Total number of reported COVID-19 cases

Oklahoma ranks **26** (out of all States and DC) in the total number of reported COVID-19 cases in the US.



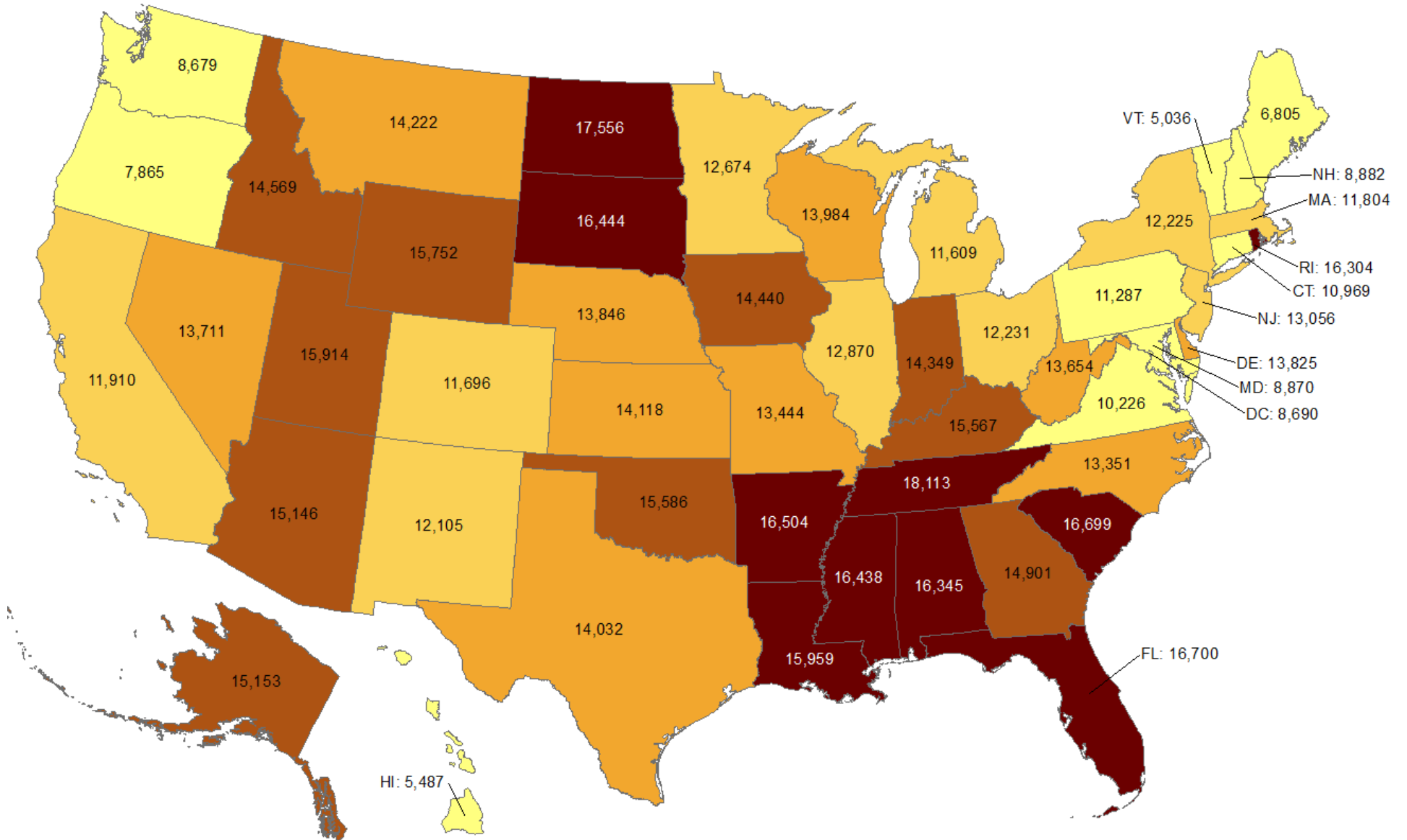
Data from CDC. Available at <https://www.cdc.gov/covid-data-tracker/index.html>

Data as of October 4, 2021

NOTE: CDC numbers include both Confirmed and Probable cases.

## Cumulative incidence of reported COVID-19 cases

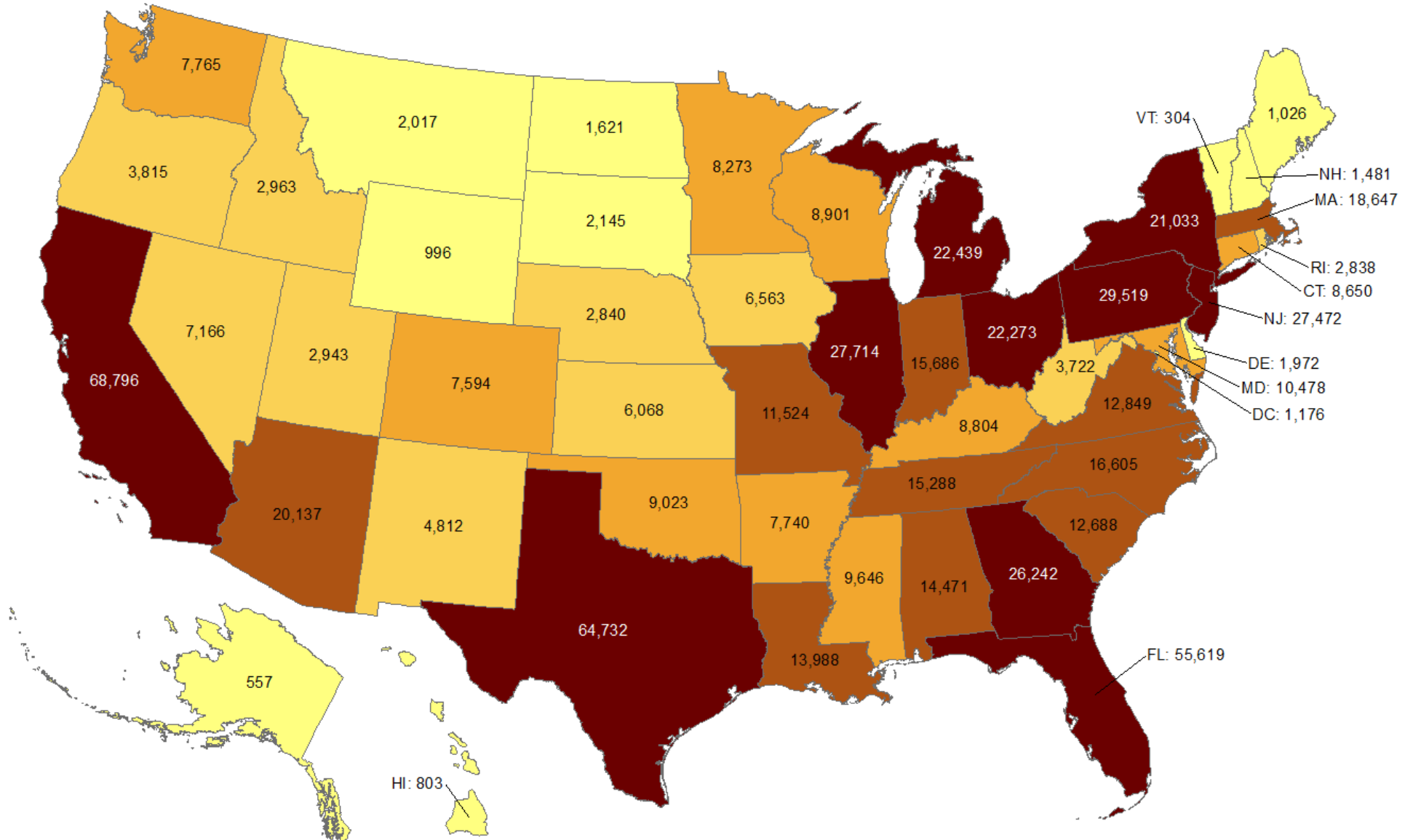
Oklahoma ranks **13** (out of all States and DC) in the cumulative incidence (per 100,000 persons) of reported COVID-19 cases in the US.



Data from CDC. Available at <https://www.cdc.gov/covid-data-tracker/index.html>  
Data as of October 4, 2021

# Total number of reported COVID-19 deaths

Oklahoma ranks **23** (out of all States and DC) in the total number of reported COVID-19 deaths in the US.

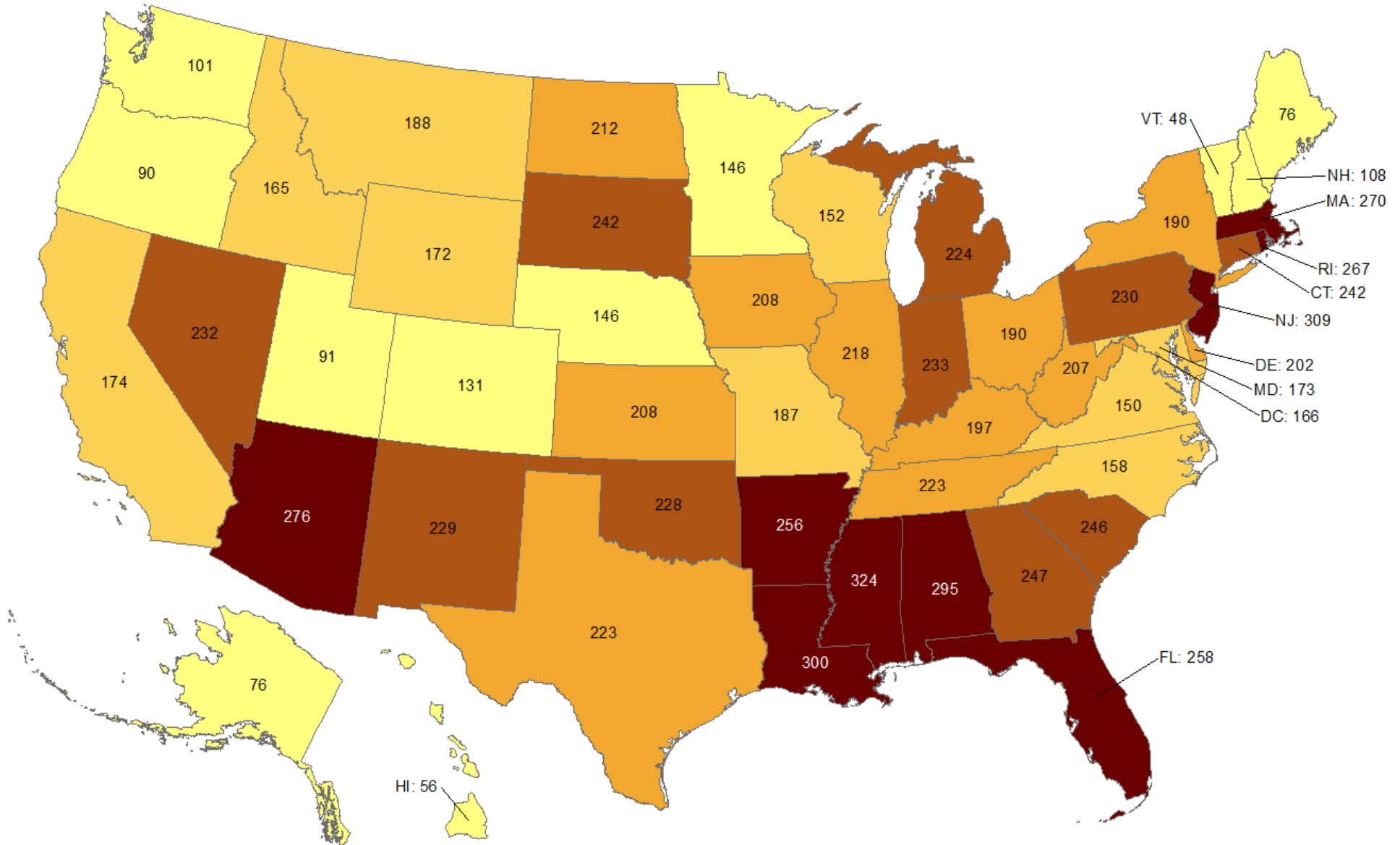


Data from CDC. Available at <https://www.cdc.gov/covid-data-tracker/index.html>  
Data as of October 4, 2021

NOTE: CDC numbers include both Confirmed and Probable cases.

## Cumulative death rate of reported COVID-19 cases

Oklahoma ranks **18** (out of all States and DC) in the cumulative death rate (per 100,000 persons) of reported COVID-19 cases in the US.

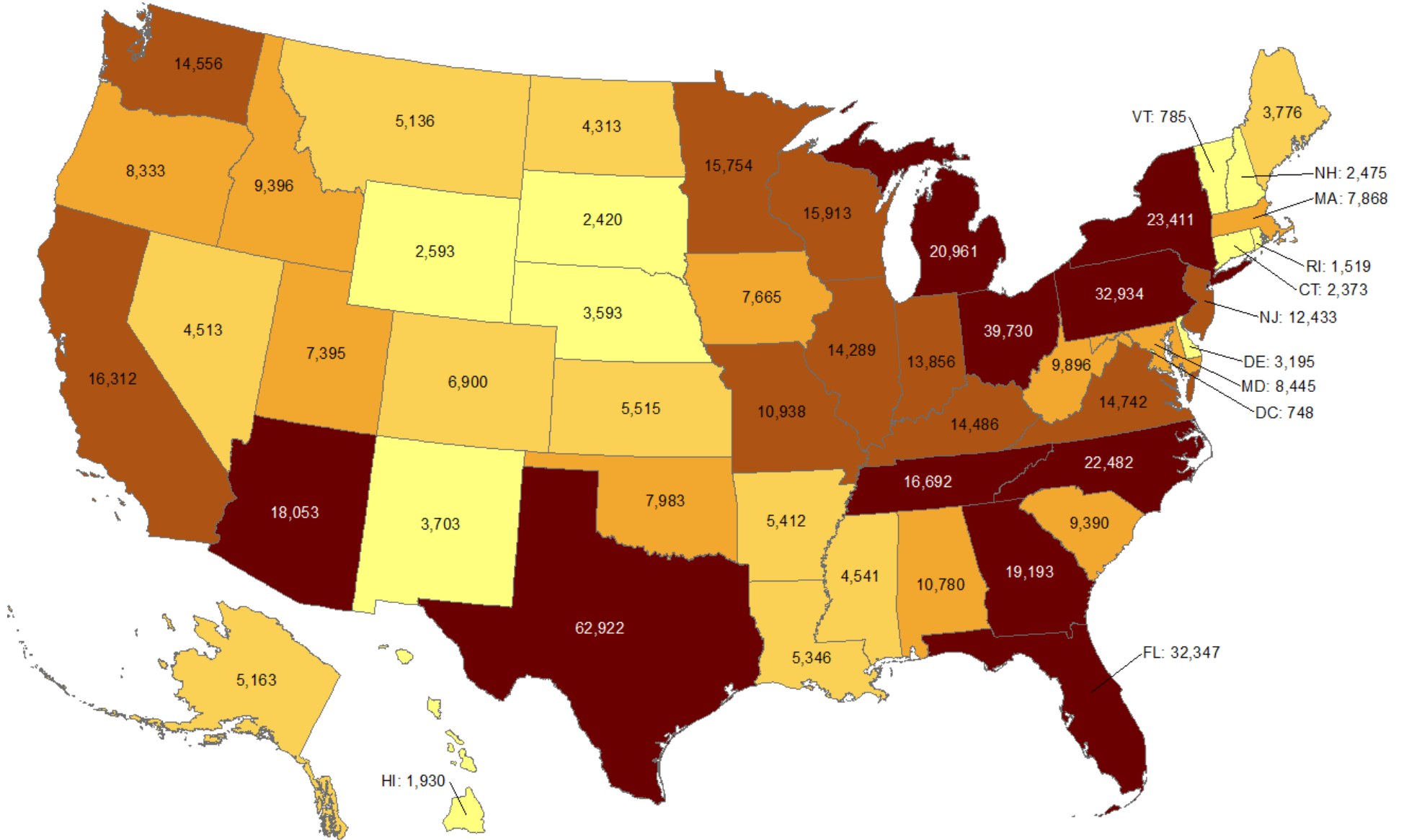


Data from CDC. Available at <https://www.cdc.gov/covid-data-tracker/index.html>  
Data as of October 4, 2021



# Total number of reported COVID-19 cases in last 7 days

Oklahoma ranks **27** (out of all States and DC) in the total number of reported COVID-19 cases in the last 7 days.



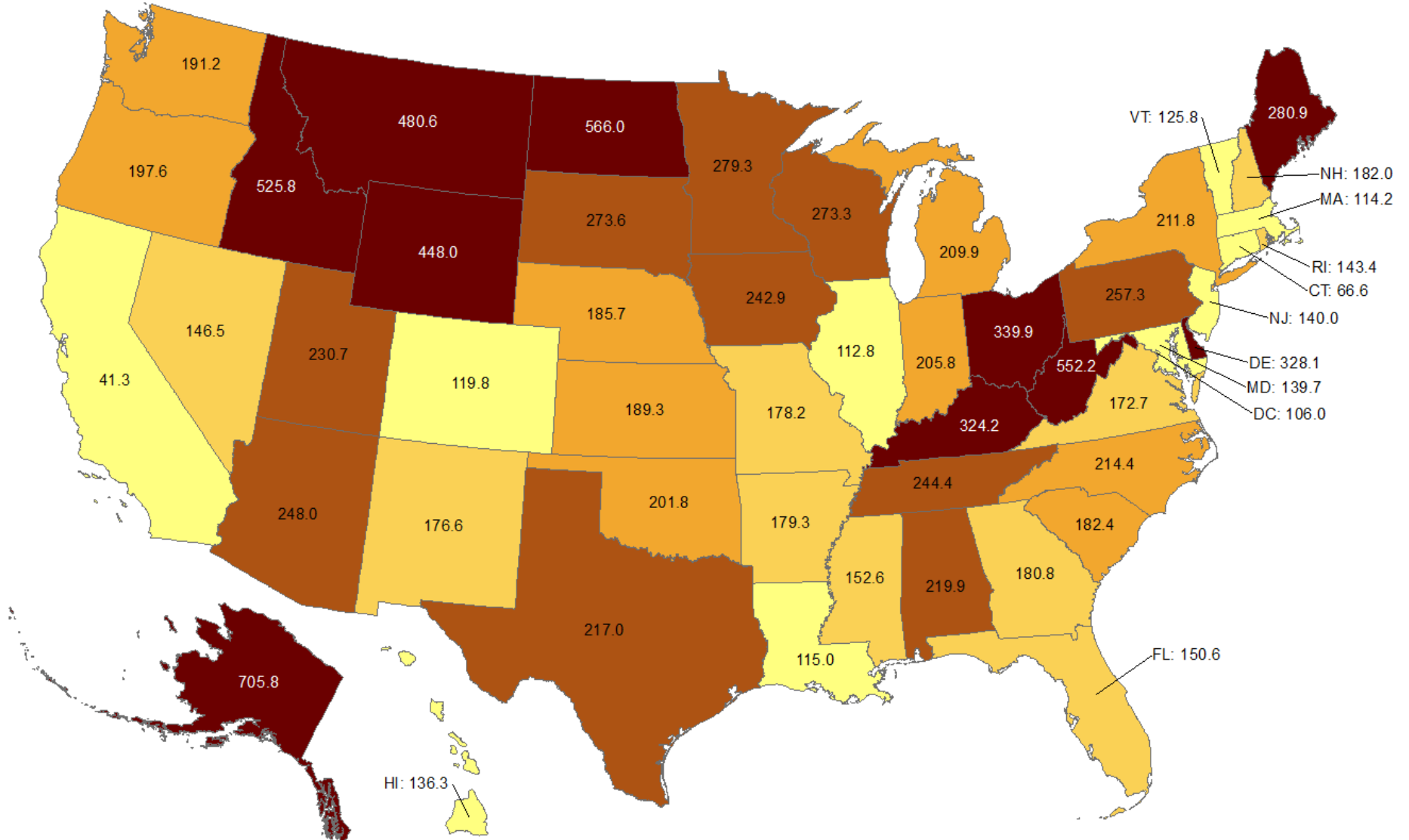
Data from CDC. Available at <https://www.cdc.gov/covid-data-tracker/index.html>

Data as of October 4, 2021

NOTE: CDC numbers include both Confirmed and Probable cases. Total new cases reported September 28, 2021 – October 4, 2021.

## Cumulative incidence of reported COVID-19 cases in last 7 days

Oklahoma ranks **25** (out of all States and DC) in the cumulative incidence (per 100,000 persons) of reported COVID-19 cases in the last 7 days.



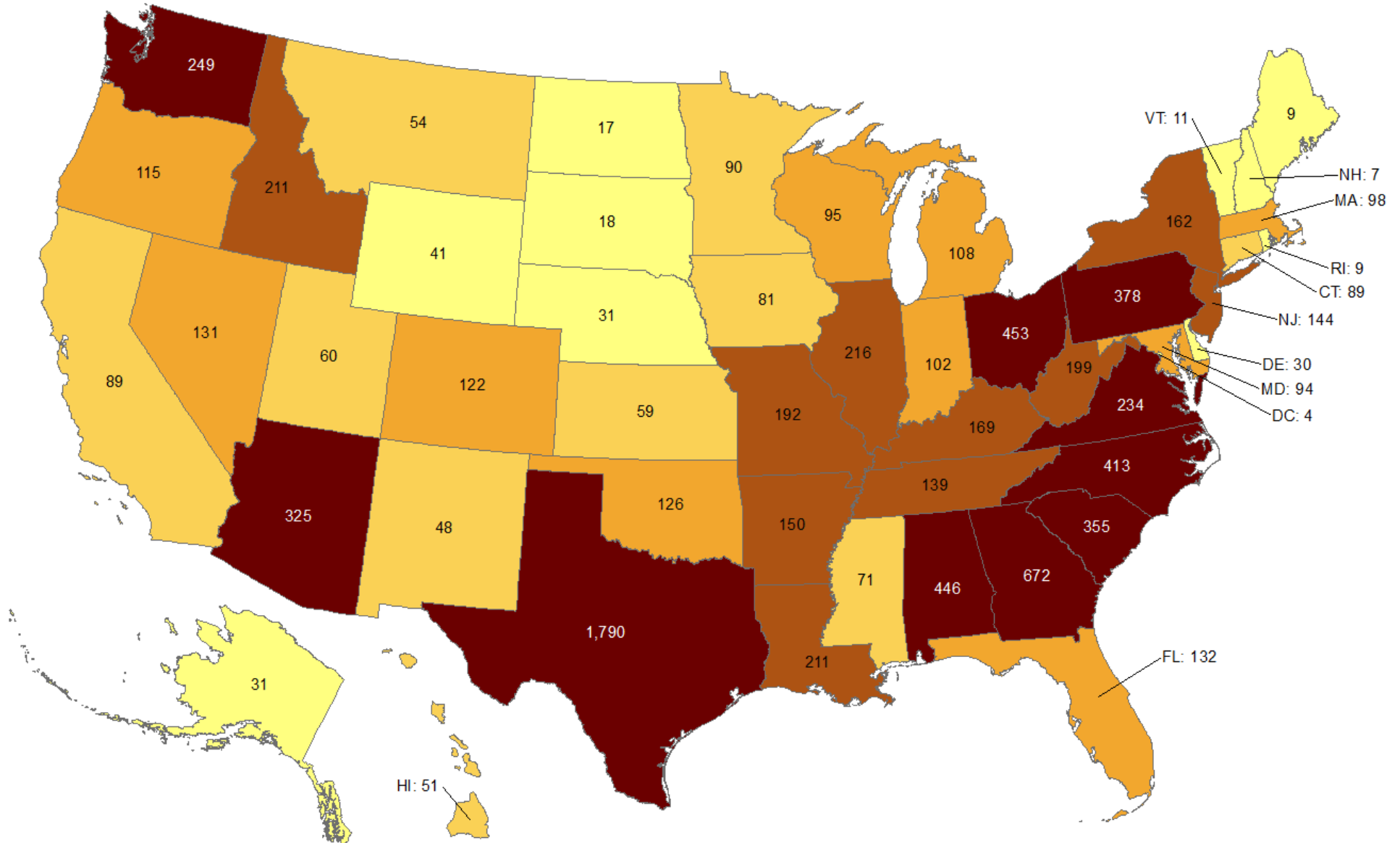
Data from CDC. Available at <https://www.cdc.gov/covid-data-tracker/index.html>

Data as of October 4, 2021

NOTE: Totals per 100,000 people in the last 7 days are calculated as the 7-day moving average of new cases or deaths (October 4, 2021 + 6 preceding days divided by 7) per 100,000 people using the U.S. Census Bureau, 2019.

## Total number of reported COVID-19 deaths in last 7 days

Oklahoma ranks **23** (out of all States and DC) in the total number of reported COVID-19 deaths in the last 7 days.



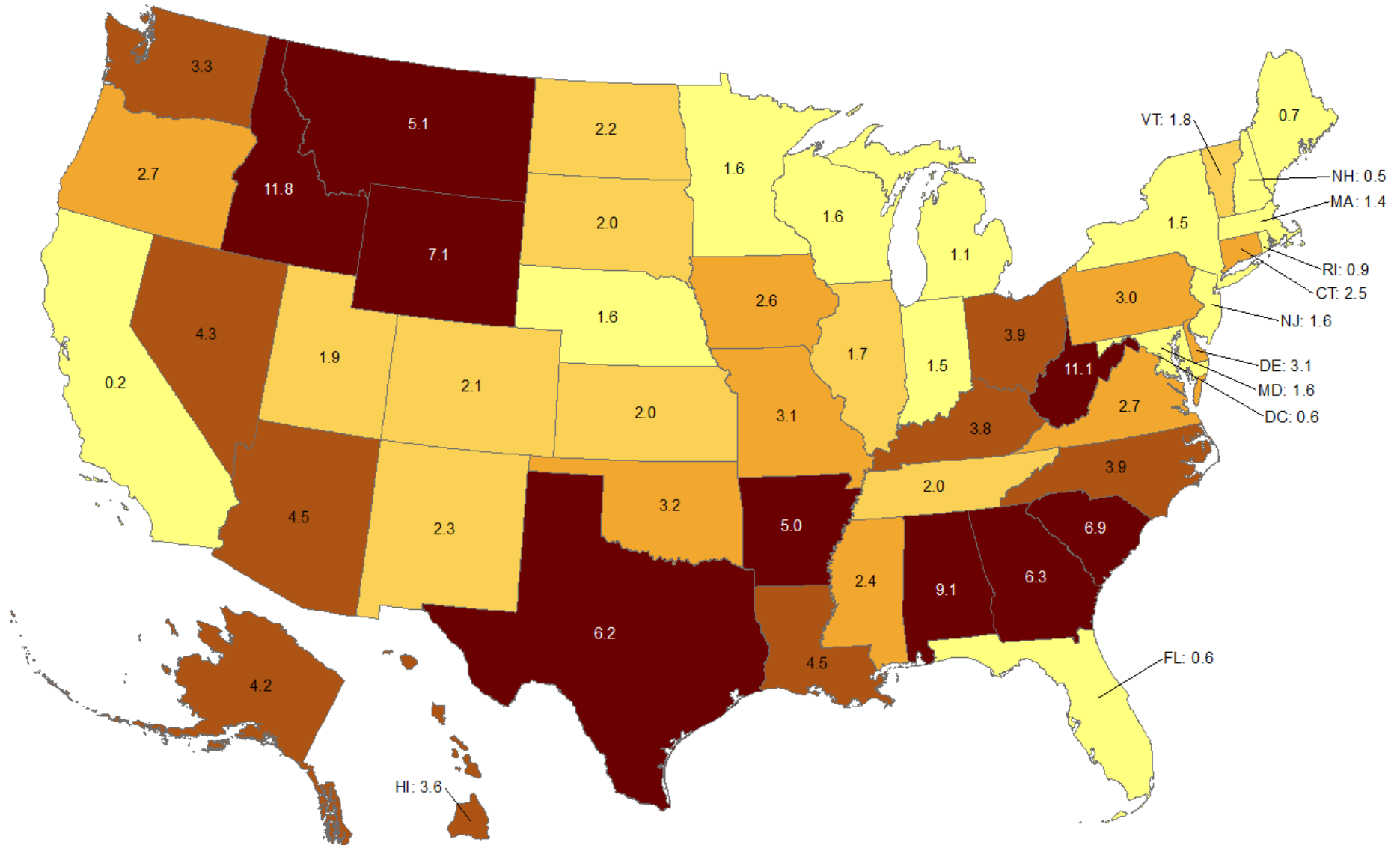
Data from CDC. Available at <https://www.cdc.gov/covid-data-tracker/index.html>

Data as of October 4, 2021

NOTE: CDC numbers include both Confirmed and Probable cases. Total new cases reported September 28, 2021 – October 4, 2021.

## Cumulative death rate of reported COVID-19 cases in last 7 days

Oklahoma ranks **19** (out of all States and DC) in the cumulative death rate (per 100,000 persons) of reported COVID-19 cases in the last 7 days.

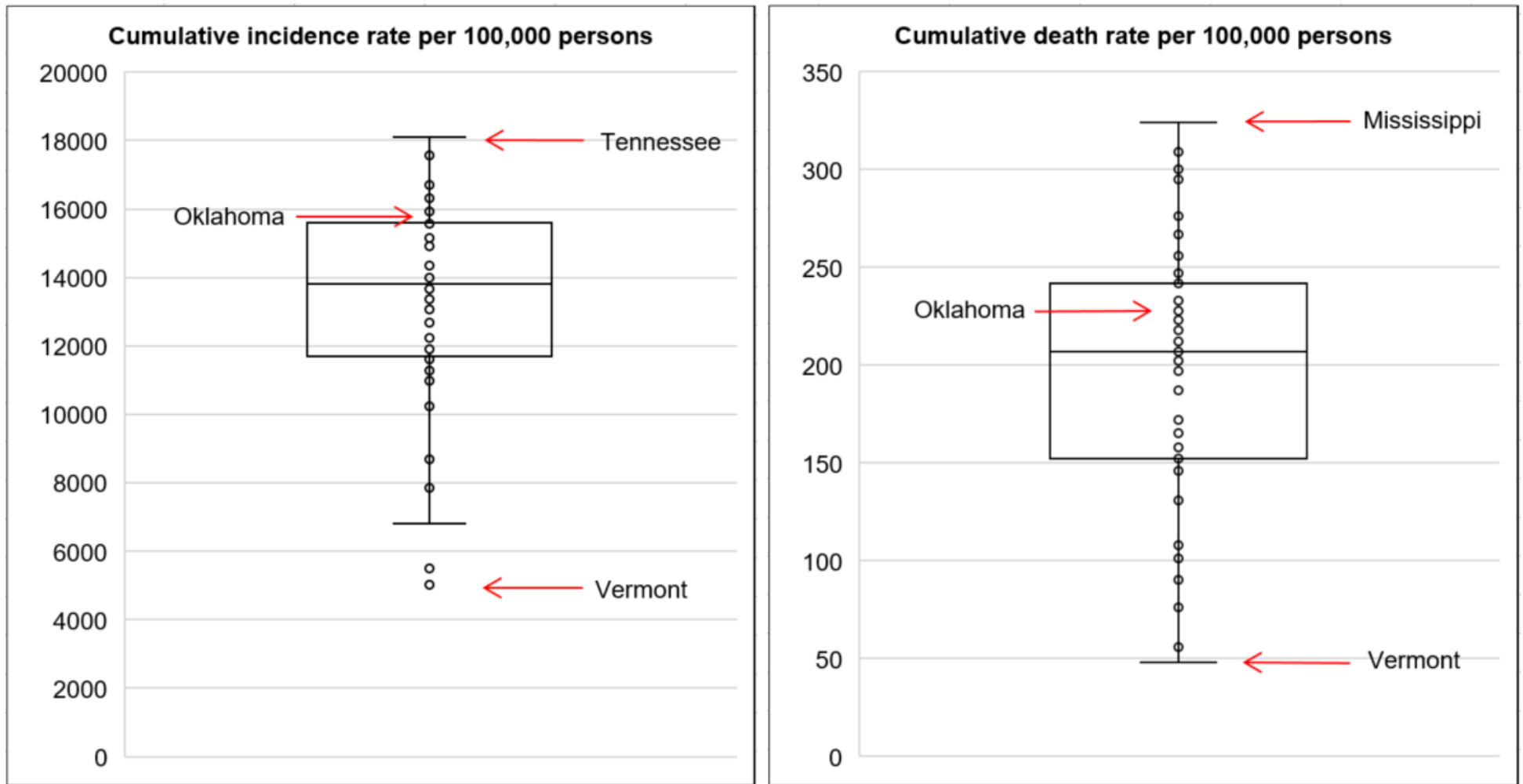


Data from CDC. Available at <https://www.cdc.gov/covid-data-tracker/index.html>

Data as of October 4, 2021

NOTE: Totals per 100,000 people in the last 7 days are calculated as the 7-day moving average of new cases or deaths (October 4, 2021 + 6 preceding days divided by 7) per 100,000 people using the U.S. Census Bureau, 2019.

## Cumulative incidence and cumulative death rate of reported COVID-19 cases



**Interpretation:** Oklahoma has cumulative incidence rate that is **above the 75<sup>th</sup> percentile** of the US and cumulative death rate that is between 50<sup>th</sup> and 75<sup>th</sup> percentile of the US.

---

## OKLAHOMA EXCESS DEATH ANALYSIS

- + indicates observed count above threshold
- Predicted number of deaths from all causes
- upper bound threshold for excess deaths

### Weekly number of deaths (from all causes)

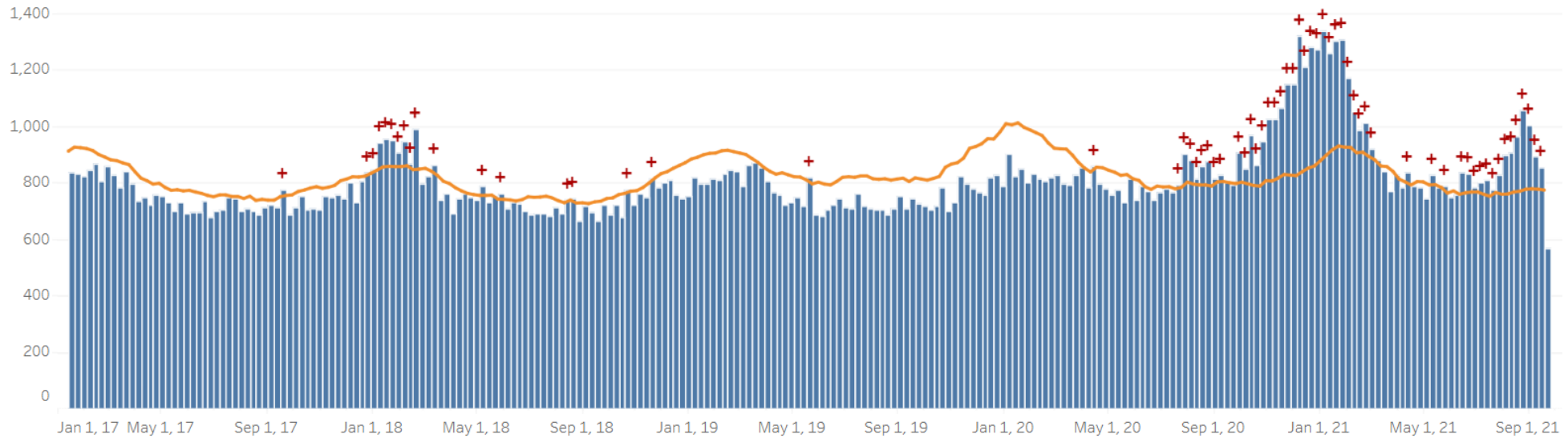


Figure notes: Contains data up to the week-ending date of September 18, 2021. Data in recent weeks are incomplete. Only 60% of the death records are submitted to NCHS within 10 days of the date of death, and completeness varies by jurisdiction.

Source: CDC, National Center for Health Statistics, [https://www.cdc.gov/nchs/nvss/vsrr/covid19/excess\\_deaths.htm#dashboard](https://www.cdc.gov/nchs/nvss/vsrr/covid19/excess_deaths.htm#dashboard), October 5, 2021 12PM

---

## COVID-19 LTC OR NURSING HOME ASSOCIATED CASES BY COUNTY

Status as of 7:00 AM October 5, 2021

Data are preliminary and are subject to change as cases are processed.

County of Residence	Cases	Recovered**	Deaths
Adair	42	33	8
Alfalfa	12	12	0
Atoka	104	98	6
Beaver	24	21	3
Beckham	170	152	16
Blaine	55	51	3
Bryan	281	251	24
Caddo	177	155	22
Canadian	270	246	20
Carter	200	164	35
Cherokee	164	139	25
Choctaw	113	100	9
Cleveland	793	663	123
Coal	73	65	8
Comanche	276	235	30
Cotton	55	46	9
Craig	58	55	3
Creek	257	230	26
Custer	246	198	47



County of Residence	Cases	Recovered**	Deaths
Delaware	266	219	45
Dewey	19	18	1
Ellis	7	7	0
Garfield	347	304	35
Garvin	93	86	7
Grady	227	193	34
Grant	15	13	2
Greer	62	53	7
Harmon	57	56	1
Harper	3	2	1
Haskell	71	66	5
Hughes	42	39	1
Jackson	126	105	20
Jefferson	28	25	3
Johnston	35	29	6
Kay	239	210	27
Kingfisher	125	109	15
Kiowa	49	39	9
Latimer	48	42	6
Le Flore	267	249	17
Lincoln	146	122	24
Logan	183	158	22
Love	31	28	3

County of Residence	Cases	Recovered**	Deaths
Major	85	73	12
Marshall	36	35	1
Mayes	147	138	9
McClain	167	149	16
McCurtain	103	81	20
McIntosh	137	124	12
Murray	81	76	5
Muskogee	435	386	48
Noble	157	153	4
Nowata	86	85	1
Okfuskee	44	43	1
Oklahoma	2032	1744	270
Okmulgee	114	109	3
Osage	119	105	14
Ottawa	275	250	24
Pawnee	117	97	20
Payne	158	149	8
Pittsburg	333	296	36
Pontotoc	80	71	8
Pottawatomie	242	217	23
Pushmataha	71	66	5
Roger Mills	3	2	1
Rogers	537	440	86

<b>County of Residence</b>	<b>Cases</b>	<b>Recovered**</b>	<b>Deaths</b>
Seminole	184	159	9
Sequoyah	109	94	14
Stephens	284	261	19
Texas	72	62	10
Tillman	34	31	2
Tulsa	1644	1332	299
Wagoner	193	174	19
Washington	368	318	49
Washita	47	45	2
Woods	43	38	5
Woodward	65	58	7
<i>Total</i>	<i>14,458</i>	<i>12,547</i>	<i>1,770</i>

\*\* Recovered case: is not deceased and 14 days after symptom onset/specimen collection. Please note that the definition for recovered was changed starting May 4, 2021 due to incomplete data on hospitalizations which may result in an inaccurate estimation of the active cases.

## COVID-19 LTC OR NURSING HOME ASSOCIATED CASES BY FACILITY

Status as of 7:00 AM October 5, 2021

Data are preliminary and are subject to change as cases are processed.

Facility	Cases	Recovered**	Deaths
Aberdeen Heights Assisted Living Community	16	12	3
Aberdeen Memory Care of Tulsa	6	2	4
Accel at Crystal Park	53	43	10
Ada Care Center	7	7	0
Adams PARC Post Acute Recovery Center	110	91	19
Albert Hall	7	7	0
Alcis Place	1	1	0
Ambassador Manor Nursing Center	38	27	10
Anadarko Nursing & Rehab	45	43	2
Angelwood Assisted Living and Memory Care	1	1	0
Antlers Manor	29	29	0
Arbor House Assisted Living Center - Norman	23	14	8
Arbor House Assisted Living Center of Mustang	37	30	7
Arbor House Assisted Living of Midwest City	4	3	1
Arbor House Reminisce	36	28	8
Arbor Village	12	11	1
Artesian Home	27	24	3
Ash Street Place	7	6	0
Ashbrook Village	6	6	0

Facility	Cases	Recovered**	Deaths
Aspen Health and Rehab	15	15	0
Atoka Manor	93	87	6
Autumn Leaves of Edmond	34	30	4
Autumn Leaves of Southwest Oklahoma City	3	2	1
Autumn Leaves of Tulsa	6	5	1
Avondale Cottage of Pryor	1	1	0
Avonlea Cottage of Seminole	26	21	1
Avonlea Cottage of Shawnee, LLC	10	10	0
Ayers Nursing Home	19	12	7
Ballard Nursing Center	27	22	5
Baptist Village of Hugo	64	57	4
Baptist Village of Oklahoma City	69	61	5
Baptist Village of Owasso	57	46	11
Baptist Village of Owasso AL	27	25	1
Barnsdall Nursing Home	14	13	1
Bartlesville Assisted Living	34	34	0
Bartlesville Health and Rehabilitation Community	110	87	22
Beacon Ridge	15	14	0
Beadles Nursing Home	34	29	5
Beare Manor	32	23	9
Beaver County Nursing Home	23	20	3
Beehive Homes of Broken Arrow	1	1	0
Beehive Homes of Glenpool	2	2	0

Facility	Cases	Recovered**	Deaths
Belfair of McAlester	12	10	2
Belfair of Shawnee	4	4	0
Bell Avenue Nursing Center	44	40	4
Bellarose Senior Living	8	5	3
Bellevue Health and Rehabilitation	108	86	21
Betty Ann Nursing Center	30	28	2
Beverly Place	1	1	0
Billings Fairchild Center, Inc	133	130	2
Binger Nursing and Rehabilitation	63	51	12
Blue Ridge Place	3	3	0
Blue River Healthcare, Inc	26	21	5
Boyce Manor Nursing Home	15	14	1
Bradford Village Healthcare Center: Nursing Home	24	20	4
Brentwood Extended Care & Rehab	24	22	2
Broadway Living Center	7	6	1
Broadway Manor Nursing Home	50	41	8
Broken Arrow Assisted Living	7	5	2
Broken Arrow Nursing Home, Inc.	38	31	6
Broken Bow Nursing Home	59	45	12
Brookdale Ada	5	5	0
Brookdale Bartlesville North	23	19	4
Brookdale Bartlesville South	16	14	2
Brookdale Broken Arrow	14	11	2

Facility	Cases	Recovered**	Deaths
Brookdale Cedar Ridge	17	15	2
Brookdale Chickasha	23	17	6
Brookdale Claremore	7	6	1
Brookdale Durant	27	25	2
Brookdale Edmond Danforth	20	16	4
Brookdale Edmond Santa Fe	6	6	0
Brookdale Enid	4	4	0
Brookdale Muskogee	23	17	6
Brookdale Norman	1	1	0
Brookdale Owasso	2	2	0
Brookdale Shawnee	1	0	1
Brookdale Stillwater	5	4	1
Brookdale Tulsa 71st and Sheridan	72	57	14
Brookdale Tulsa Midtown	11	8	3
Brookdale Tulsa South	8	7	1
Brookdale Village	3	2	1
Brookdale Weatherford	14	12	2
Brookridge Retirement Community	8	8	0
Brookside Nursing Center	8	8	0
Brookwood Skilled Nursing and Therapy	11	8	3
Burford Manor	17	16	1
Calera Manor, LLC	44	39	3
Callaway Nursing Home	14	14	0



Facility	Cases	Recovered**	Deaths
Canoe Brook Ardmore	7	7	0
Capitol Hill Skilled Nursing and Therapy	48	41	7
Carnegie Nursing Home, Inc.	39	33	6
Cearu Medical Resort	2	0	0
Cedar Creek Nursing Center	80	75	5
Cedar Crest Manor	28	28	0
Cedarcrest Care Center	53	44	9
Center of Family Love	18	18	0
Chandler Therapy & Living Center, LLC	60	51	9
Checotah Nursing Center	8	6	2
Cherokee County Nursing Center	66	57	9
Chickasha Nursing Center, Inc	13	9	4
Chisholm Trail Assisted Living	24	22	1
Choctaw Nation Nursing Home	37	32	5
Cimarron Nursing Center	23	19	4
Cimarron Pointe Care Center	27	24	3
Claremore Skilled Nursing and Therapy	36	26	4
Cleveland Manor Nursing & Rehab	68	58	10
Clinton Therapy & Living Center	7	6	0
Colonial Manor II	60	59	1
Colonial Manor Nursing Home	25	21	4
Colonial Park Manor, LLC	6	6	0
Colonial Terrace Care Center	28	28	0

Facility	Cases	Recovered**	Deaths
Community Health Care of Gore	12	12	0
Community Health Center	11	9	2
Copp's Residential Care, Inc	3	3	0
Cordell Christian	12	12	0
Corn Heritage Village and Rehab	27	26	1
Corn Heritage Village and Rehab of Weatherford	65	54	11
Cottonwood Creek Skilled Nursing & Therapy	35	29	6
Country Club Care	92	87	5
Country Club at Woodland Hills	9	9	0
Country Gardens Assisted Living Community	1	0	0
Country Lane	4	4	0
Country Place	1	1	0
Countryside Estates	19	17	2
Countrywood Assisted Living and Memory Care	12	8	4
Covenant Living at Inverness	30	27	3
Covenant Living of Bixby	6	6	0
Coweta Manor Nursing Home	76	64	12
Creek Place	3	3	0
Creekside Village	14	13	1
Cross Place	1	1	0
Cross Timbers Nursing and Rehabilitation	59	56	3
Crossroads Residential Care	16	14	2
Crystal Place, LLC	1	1	0

Facility	Cases	Recovered**	Deaths
Dogwood Creek Retirement Center	8	8	0
Dorset Place - Assisted Living	2	2	0
Dr W F & Mada Dunaway Manor	41	36	5
Drumright Nursing Home	47	44	2
Duncan Assisted Living	19	18	1
Duncan Community Residence	1	1	0
EastOK Cottage 1	3	3	0
Eastgate Village Retirement Center	105	97	8
Eastwood Manor	96	91	5
Eden Care - The Greens	1	1	0
Edith Kassanavoid Gordon Assisted Living Center	4	3	0
Edmond Healthcare Center	53	44	9
Edna Lee's Residential Care	4	4	0
El Reno Post-Acute Rehabilitation Center	12	10	2
Elk City Nursing Center	60	52	8
Elk Crossing	42	34	7
Elkwood Assisted Living and Memory Care	25	22	3
Elmbrook Home	20	18	2
Elmwood Manor Nursing Home	23	14	0
Emerald Care Center Claremore	125	108	16
Emerald Care Center Midwest	73	66	7
Emerald Care Center Southwest LLC	59	57	2
Emerald Care Center Tulsa	40	33	7

Facility	Cases	Recovered**	Deaths
Emerald Square Assisted Living Community	3	3	0
English Village Manor	52	41	11
Enid Senior Care	18	16	2
Epworth Villa Health Services	33	31	2
Eufaula Manor Nursing and Rehabilitation Center	83	75	7
Fairfax Manor	31	26	5
Fairmont Skilled Nursing and Therapy	79	71	7
Fairview Fellowship Home for Senior Citizens, Inc	95	85	10
Family Care Center of Fairland	2	2	0
Family Care Center of Kingston	20	19	1
Faye's Place	7	7	0
Featherstone Assisted Living Community of Ada	4	4	0
Featherstone Assisted Living Community of Durant	5	5	0
Featherstone Assisted Living Community of Moore	38	33	5
Featherstone of Miami	1	0	0
First Shamrock Care Center	5	5	0
Forest Hills Care and Rehabilitation Center	32	26	6
Forrest Manor Nursing Center	53	49	4
Fort Gibson Nursing Home	22	17	4
Fountain View Manor, Inc	11	10	1
FountainBrook Assisted Living and Memory Support	12	12	0
Four Seasons Rehabilitation & Care	44	43	1
Franciscan Villa	135	112	22

Facility	Cases	Recovered**	Deaths
Garland Road Nursing and Rehab Center	13	11	2
Gatesway Foundation, Inc	9	9	0
Glade Avenue Assisted Living	6	5	0
Glade Avenue South	6	3	3
Glenhaven Retirement Village	77	69	8
Glenwood Healthcare	27	17	9
Go Ye Village Continuum of Care Retirement Community	9	4	5
Golden Age Nursing Home of Guthrie, LLC	89	68	19
Golden Oaks Village	50	38	11
Grace Living Center - Buffalo	1	0	1
Grace Living Center - Clinton	19	16	3
Grace Living Center - Jenks	41	32	9
Grace Living Center - Norman	89	72	17
Grace Living Center - Stillwater	16	15	1
Grace Living Center - Tahlequah East Shawnee	6	4	2
Gracewood Health and Rehab	45	37	8
Gran Grans Place	2	2	0
Grand Lake Villa	37	28	9
Grandwood Assisted Living, LC	41	35	6
Green Country Care Center	103	91	12
Green Country Village Assisted Living Center	6	6	0
Green Tree at Sand Springs	29	23	6
Greenbrier Nursing Home	50	46	3

Facility	Cases	Recovered**	Deaths
Greenbrier Village Residential Living, LLC	15	15	0
Gregston Nursing Home, Inc.	13	12	1
Grove Nursing Center	98	77	19
Harborchase of Oklahoma City	1	1	0
Harrah Nursing Center	48	42	6
Haskell Care Center	9	9	0
Haskell County Nursing Center, Inc	67	62	5
Hays House	38	38	0
Heartsworth Center for Nursing and Rehabilitation	49	46	3
Heartsworth House Assisted Living	1	1	0
Heatheridge Residential Care Center	22	16	6
Heavener Nursing & Rehab	56	47	8
Hennessey Nursing & Rehab	80	72	7
Henryetta Community Skilled Healthcare & Rehab	10	9	1
Hensley Nursing & Rehab	36	31	5
Heritage Assisted Living	12	11	0
Heritage Community	32	27	5
Heritage Grove at Tahlequah	3	3	0
Heritage Hills Living & Rehabilitation Center	70	67	3
Heritage Manor	30	29	1
Heritage Park	7	4	3
Heritage Point of Oklahoma City	2	2	0
Heritage Point of Tulsa	7	7	0

Facility	Cases	Recovered**	Deaths
Heritage Skilled Nursing & Therapy	8	7	1
Heritage Villa Nursing Center	21	17	4
Heritage Village Nursing Home	15	15	0
Heritage at Brandon Place Health and Rehabilitation	57	51	6
High Cedar Residential Care	1	1	0
Higher Call Nursing Center	38	31	7
Highland Park Health Care	10	9	1
Hill Nursing Home, Inc	16	15	1
Hillcrest Manor Nursing Center	9	2	5
Hillcrest Nursing Center	21	20	1
Hobart Nursing & Rehab	24	21	3
Holiday Heights Nursing Home	13	11	2
Home of Hope Elmwood House	1	1	0
Home of Hope Scrapper House	1	1	0
Homestead Residential Care	2	2	0
Homestead of Bethany, LLC	9	8	1
Homestead of Hugo	45	40	5
Homestead of Owasso	15	15	0
Ignite Medical Resort Norman, LLC	50	41	9
Ignite Medical Resort OKC	115	100	14
Iris Memory Care of Edmond	10	7	3
Jacquelyn House	2	2	0
Jan Frances Care Center	14	12	2



Facility	Cases	Recovered**	Deaths
John H. Johnson Care Suites	10	10	0
Kenwood Manor	23	22	1
Kingwood Skilled Nursing and Therapy	29	26	3
Lake Country Nursing Center	30	27	3
Lake Drive Care and Rehabilitation Center	42	42	0
Lakeland Manor, Inc	14	11	3
Lakeview Nursing & Rehab	26	24	2
Landmark of Midwest City Rehabilitation and Nursing	44	38	6
Lane Nursing & Ventilator Care	3	3	0
Latimer Nursing Home	26	22	4
Legacy Village of Stillwater	16	16	0
Legend at 71st St	16	13	3
Legend at Council Road	7	7	0
Legend at Mingo Road	4	4	0
Legend at Rivendell	61	48	13
Leisure Village Health Care Center	51	39	12
Lexington Nursing Home	16	13	2
Liberty Place	2	2	0
Lindsay Nursing & Rehab	34	31	3
Linwood Village Nursing & Retirement Apts	16	16	0
Lyndale at Edmond	2	2	0
Magnolia Creek Skilled Nursing and Therapy	44	34	9
Mangum Skilled Nursing and Therapy	64	56	6

Facility	Cases	Recovered**	Deaths
Maple Lawn Nursing and Rehabilitation	20	16	4
Maplewood Care Center	37	32	5
Marlow Nursing & Rehab	16	15	1
McAlester Nursing & Rehab	52	47	4
McCall's Chapel School, Inc #11	2	2	0
McCall's Chapel School, Inc #13	1	1	0
McCall's Chapel School, Inc #4	1	1	0
McCall's Chapel School, Inc #7	1	1	0
McCall's Chapel School, Inc #8	1	1	0
McCall's Chapel School, Inc #9	1	1	0
McLoud Nursing Center	8	8	0
McMahon-Tomlinson Nursing Center	46	42	4
Meadow Brook Residential Care	29	29	0
Meadowbrook Nursing Center	42	39	3
Meadowlake Estates	85	68	17
Meadowlakes Retirement Village	2	2	0
Medical Park West Rehabilitation	10	7	2
Medicallodges Dewey	6	6	0
Meeker Nursing Center	51	36	15
Memorial Heights Nursing Center	27	20	7
Memorial Nursing Center	28	27	1
Memory Care Center at Emerald	13	12	1
Meridian Nursing Home	16	15	1

Facility	Cases	Recovered**	Deaths
Miami Nursing Center, LLC	87	80	7
Mid-Del Skilled Nursing and Therapy	25	24	1
Miller's Residential Care, LLC	2	2	0
Mitchell Manor	84	79	5
Monroe Manor	17	12	5
Montereau, Inc Assisted Living	25	20	5
Montereau, Inc LTC/SNF	14	12	0
Montevista Rehabilitation and Skilled Care	23	20	3
Mooreland Heritage Manor	26	24	2
Muscogee (Creek) Nation Skilled Nursing Facility	1	1	0
Muskogee Nursing Center	20	19	1
New Hope Retirement & Care Center	4	4	0
Noble Health Care Center	81	76	5
North County Assisted Living	6	5	1
North County Center for Nursing and Rehabilitation	36	32	4
North Winds Living Center	2	2	0
Northhaven Place	10	9	1
Northwest Nursing Center	3	3	0
Nowata Nursing Center	6	5	1
Oak Hills Living Center	20	19	1
Oakridge Home	14	12	2
Oakridge Nursing Center	62	55	7
Okemah Care Center	27	25	2

Facility	Cases	Recovered**	Deaths
Oklahoma Methodist Manor AL	5	4	1
Oklahoma Methodist Manor NH	36	33	3
Oklahoma Veterans Center, Ardmore Division	35	22	13
Oklahoma Veterans Center, Claremore Division	319	265	52
Oklahoma Veterans Center, Clinton Division	157	124	33
Oklahoma Veterans Center, Lawton-Ft. Sill Division	58	40	7
Oklahoma Veterans Center, Norman Division	98	70	27
Oklahoma Veterans Center, Sulfur Division	50	49	1
Oklahoma Veterans Center, Talihina Division	33	29	4
Okmulgee Terrace	3	3	0
Osage Nursing Home, LLC	33	32	1
Oxford Glen at Owasso	25	20	5
Parkhill North Nursing Home	25	23	2
Parkland Manor	1	1	0
Parkview Pointe Senior Living	1	1	0
Pauls Valley Care Center	3	3	0
Perry Green Valley Nursing Center, LLC	29	27	2
Pleasant Valley Health Care Center	81	77	4
Pocola Health & Rehab	63	58	4
Ponca City Nursing and Rehabilitation	69	61	8
Prairie House Assisted Living & Memory Care	8	5	3
Prairie Pointe at Stroud	11	11	0
Primrose Retirement Community of Shawnee	12	12	0

Facility	Cases	Recovered**	Deaths
Primrose Retirement Community of Stillwater	3	3	0
Providence House	9	8	0
Providence Place	2	2	0
Purcell Care Center, LLC	43	36	7
Quail Creek Senior Living	23	19	4
Quail Ridge Living Center, Inc (Colcord, OK)	37	35	2
Quail Ridge Senior Living	27	21	6
Quinton Manor Nursing Home	10	10	0
RT 66 Residential Care Home, LLC	7	7	0
Rainbow Health Care Community: Nursing Home	84	75	9
Rainbow Terrace Care Center	1	1	0
Rambling Oaks (Norman)	29	26	3
Rambling Oaks Courtyard Assisted Living & Memory Care	9	9	0
Ranch Terrace Nursing Home	22	19	3
Ranchwood Nursing Center	37	35	2
Reliant Living Center	22	21	1
Reliant Living Center of Del City	3	3	0
River Oaks Skilled Nursing	51	43	8
Riverside Health Services LLC	18	18	0
Robert M Greer Center	1	1	0
Rolling Hills Care Center	29	16	11
Ruth Wilson Hurley Manor	75	67	8
Saint Simeons Episcopal Home	32	29	3

Facility	Cases	Recovered**	Deaths
Sand Plum Assisted Living Community	13	11	1
Sand Springs Nursing and Rehabilitation	10	10	0
Seiling Nursing Center	7	5	2
Seminole Care and Rehabilitation Center	96	84	6
Seminole Pioneer Nursing Home	21	21	0
Seminole Place	2	2	0
Senior Star The Brook	3	3	0
Senior Suites Healthcare	17	14	3
Senior Village	12	10	2
Sequoyah East Nursing Center, LLC	17	16	1
Sequoyah Manor	55	44	11
Sequoyah Pointe Living Center	26	22	4
Shady Rest Care Center	34	31	3
Shanoan Springs Nursing and Rehabilitation	62	55	7
Share Medical Center	7	7	0
Shattuck Nursing Center	6	6	0
Shawn Manor Nursing Home	2	2	0
Shawnee Care Center	38	31	7
Shawnee Colonial Estates Nursing Home	74	63	10
Sherwood Manor Nursing Home	19	13	5
Shiloh Manor	14	14	0
Sienna Extended Care & Rehab	40	37	3
Skiatook Nursing Home	47	41	6

Facility	Cases	Recovered**	Deaths
Skyview Nursing Center	9	8	1
Sommerset Neighborhood	23	22	1
South Park East	46	42	4
South Pointe Rehabilitation and Care Center	195	166	28
Southbrook Healthcare, Inc.	36	30	6
Southern Hills Rehabilitation Center	89	77	12
Southern Oaks Care Center	55	44	11
Southern Plaza Assisted Living and Memory Care	30	28	2
Southern Pointe Living Center	49	41	8
Southridge Place	1	1	0
Spanish Cove Housing Authority	27	26	0
Spiro Nursing Home, Inc.	56	55	1
St. Ann's Skilled Nursing and Therapy	89	61	28
St. Katharine Drexel Retirement Center	10	10	0
Stilwell Nursing Home, LLC	34	26	8
Stonecreek Assisted Living and Memory Care	6	4	2
Storey Oaks	48	43	5
Stroud Health Care Center South	8	8	0
Summers Healthcare, LLC	30	29	1
Sunset Estates of Purcell	87	79	6
Tamarack Retirement Center	18	16	2
Teal Creek Assisted Living & Memory Care	7	6	0
Tealridge Assisted Living	13	12	0

Facility	Cases	Recovered**	Deaths
Temple Manor Nursing Home	47	40	7
Ten Oaks Place	12	8	4
The Arbors Assisted Living Center	11	11	0
The Brentwood Senior Living	22	20	2
The Chateau	10	8	2
The Commons	133	117	10
The Commons - AL	3	3	0
The Cottage Extended Care	31	23	8
The Courtyards at Claremore Assisted Living	7	5	2
The Courtyards at Magnolia Creek	9	9	0
The Fountains at Canterbury Health Center	37	31	6
The Gardens	20	16	4
The Gardens at Rivermont	3	3	0
The Golden Rule Home	58	55	3
The Grand at Bethany Skilled Nursing and Therapy	12	10	0
The Health Center at Concordia	35	31	3
The Health Center at Concordia ALC	8	8	0
The Heaven House Elmwood	1	1	0
The Highlands at Owasso	38	28	10
The King's Daughters & Sons Nursing Home	69	61	3
The Lakes	12	11	1
The Legend at Jefferson's Garden	2	2	0
The Linden at Stonehaven Square	19	10	9



Facility	Cases	Recovered**	Deaths
The Living Centre	36	29	7
The Lodge at Brookline	16	14	2
The Mansion at Waterford	21	17	4
The Neighborhoods at Baptist Village of Ada	7	7	0
The Neighborhoods at Baptist Village of Elk City	12	10	0
The Neighborhoods at Baptist Village of Okmulgee	1	1	0
The Nova Center	1	1	0
The Oaks Healthcare Center	32	30	2
The Parke Assisted Living	17	15	2
The Regency Skilled Nursing and Therapy	26	24	2
The Renaissance of Stillwater - Assisted Living	5	5	0
The Springs Skilled Nursing and Therapy	49	40	9
The Timbers Skilled Nursing and Therapy	69	57	12
The Veraden	11	11	0
The Villages at Southern Hills	86	66	20
The Willows	1	1	0
The Wilshire Skilled Nursing and Therapy	5	5	0
The Wolfe Living Center at Summit Ridge	17	16	1
Tidwell Living Center	1	1	0
Timberwood Assisted Living & Memory Care	1	1	0
Touchmark at Coffee Creek	26	25	1
Town Village Assisted Living	2	2	0
Town of Vici Nursing Home	19	18	1

Facility	Cases	Recovered**	Deaths
Tulsa Assisted Living and Memory Care	4	3	1
Tulsa Nursing Center	35	32	3
Tuscany Village Nursing Center	26	24	2
Tuttle Care Center	30	28	2
University Park Skilled Nursing & Therapy	66	60	6
University Village	80	65	15
Van Buren House Assisted Living	2	2	0
Via Christi Village Ponca City	104	98	6
Vian Nursing & Rehab, LLC	22	20	2
Victorian Estates	8	7	1
Village Health Care Center	15	12	2
Village Lodge of Ardmore Village	11	10	1
Village at Oakwood	8	7	1
Village on the Park	44	32	8
Villagio of Oklahoma City	1	0	1
Wagoner Health & Rehab	44	41	3
Wagoner Health & Rehab Res Care	11	11	0
Walnut Grove Living Center	70	57	13
Warr Acres Nursing Center	21	19	1
Washita Valley Living Center	35	32	3
Weatherwood Assisted Living and Memory Care	10	10	0
Wellington Parke, LLC	5	4	0
West Wind Assisted Living	25	23	2

Facility	Cases	Recovered**	Deaths
Westbrook Gardens	6	5	1
Westbrook Healthcare, Inc	19	17	2
Westhaven Nursing Home	81	78	3
Westview Cottages	35	35	0
Wewoka Healthcare Center	13	13	0
Whispering Oaks	3	3	0
Wildewood Skilled Nursing and Therapy	19	13	1
Wildwood Care Center, Inc	37	34	3
Wilkins Health and Rehabilitation Community	34	32	0
Willow Creek Health Care	20	18	2
Willow Haven Nursing Home	33	27	6
Willow Park Health Care Center	73	63	10
Willow Place	5	5	0
Willowood at Mustang Assisted Living and Memory Care	7	7	0
Wilson Nursing Center	48	40	8
Windridge Nursing and Rehabilitation Center	32	28	4
Windsor Hills Nursing Center	8	7	1
Woodland Park Home, Inc	6	5	1
Woodlands Skilled Nursing & Therapy	3	3	0
Woodview Home, Inc.	21	21	0
Woodward Skilled Nursing and Therapy	33	29	4
York Manor Nursing Home	43	41	2
Zarrow Pointe	20	17	3

Facility	Cases	Recovered**	Deaths
<i>Total</i>	14,458	12,547	1,770

\*\* Recovered case: is not deceased and 14 days after symptom onset/specimen collection. Please note that the definition for recovered was changed starting May 4, 2021 due to incomplete data on hospitalizations which may result in an inaccurate estimation of the active cases.

## ACKNOWLEDGEMENT

The weekly report is made by possible through the efforts of county and city public health and healthcare professionals.

## NOTES

Every effort is made to ensure accuracy and the data is up-to-date for the time period reported.  
 For daily updates on COVID-19, please visit <https://coronavirus.health.ok.gov/>

## DISCLAIMER

The purpose of publishing aggregated statistical COVID-19 data through the OSDH Dashboard, the Executive Order Report, and the Weekly Epidemiology and Surveillance Report is to support the needs of the general public in receiving important and necessary information regarding the state of the health and safety of the citizens of Oklahoma. These resources may be used only for statistical purposes and may not be used in any way that would determine the identity of any reported cases.