

OKLAHOMA COVID-19 WEEKLY REPORT

Weekly Epidemiology and Surveillance Report
January 2 - 8, 2022



PURPOSE To provide up-to-date weekly epidemiological data on COVID-19 in Oklahoma.

SNAPSHOT

	Jan 2 - 8	Change ¹	Total
Cases	48,143	149.7%	765,013
Recovered cases ²	11,513	35.0%	693,016
Deaths	94	n/a	11,741

1. Change from the week of December 26, 2021 – January 1, 2022.

2. Not deceased and 14 days after symptom onset/specimen collection. Please note that the definition for recovered was changed starting May 4, 2021 due to incomplete data on hospitalization which may result in an inaccurate estimation of the active cases.

KEY POINTS

- **48,143** cases were reported in the last week, 149.7% increase from the week before (Dec 26-Jan 1).
- **94** deaths were reported in the past week.
- The cumulative crude case-fatality risk is **1.5%**
- **38,958 (5.1%)** cases have been hospitalized. The cumulative hospitalization rate is **984.5 per 100,000 persons**.
- ***61,073** specimens have been reported over the last 7 days according to the CDC COVID data tracker. * Counts reflect the tests reported since Jan 05.
- **4,439,130** vaccine doses have been administered in total

What's New:

This week's report includes data on COVID-19 variant strains which have been sequenced recently in lieu of cumulative totals which have previously been reported. These data are broken down by region. (Pg. 8).

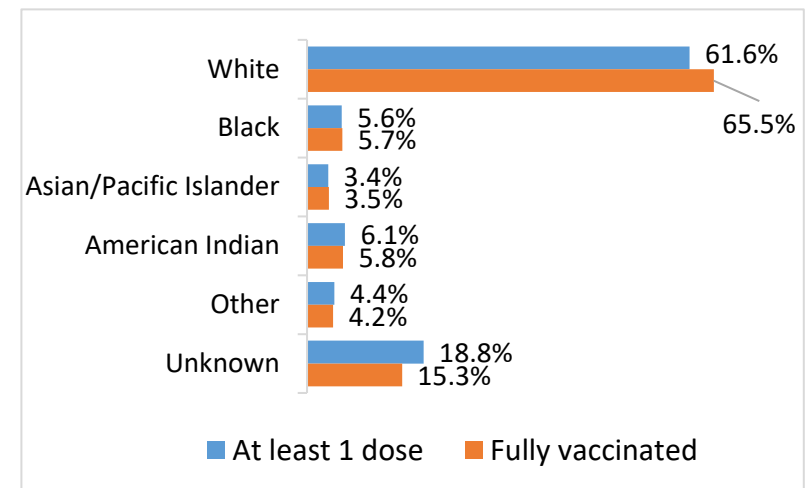
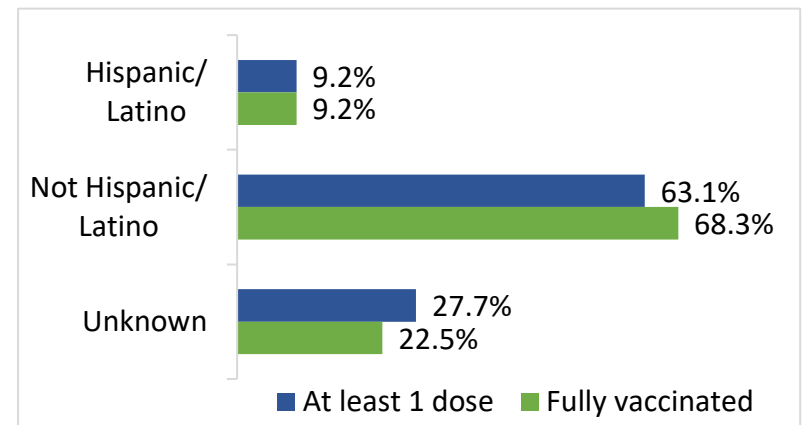
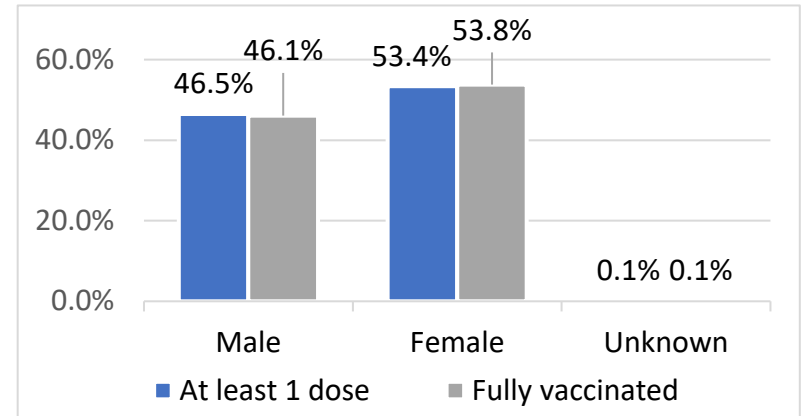
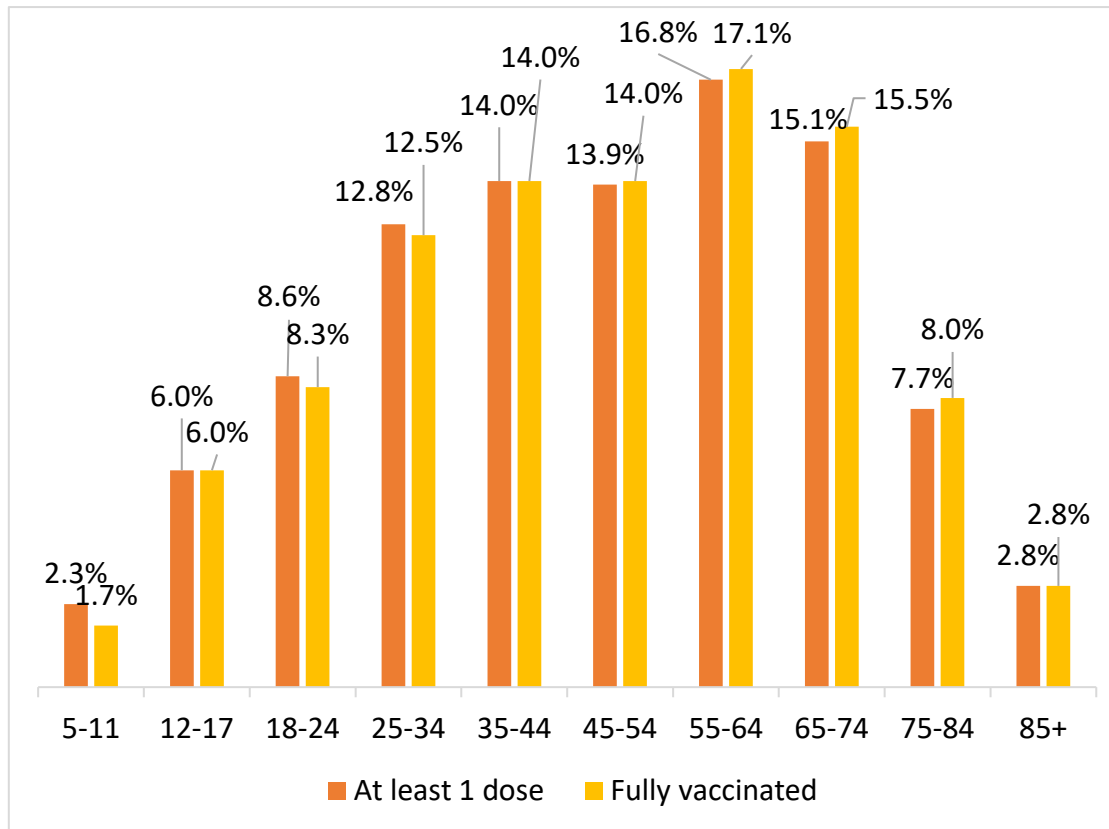
COVID- 19 VACCINE DATA BY TOTAL AND KEY METRICS¹

	Jan 4 – Jan 10	Total Number
Doses Administered	62,535	4,439,130
At least 1 dose ²	18,197	2,130,637
Fully vaccinated ³	10,479	1,796,221

1. Doses administered amount does not include doses administered by federal entities in Oklahoma.

2. At least one does refers to individuals (ages 5 years+) receiving Pfizer and Moderna COVID-19 vaccines and/or receiving single shot of J&J/Janssen Vaccine.

3. Fully vaccinated refers to individuals (ages 5 years+) fully vaccinated after receiving either Pfizer and/or Moderna COVID-19 vaccines (both doses) and/or receiving single shot of J&J/Janssen Vaccine.



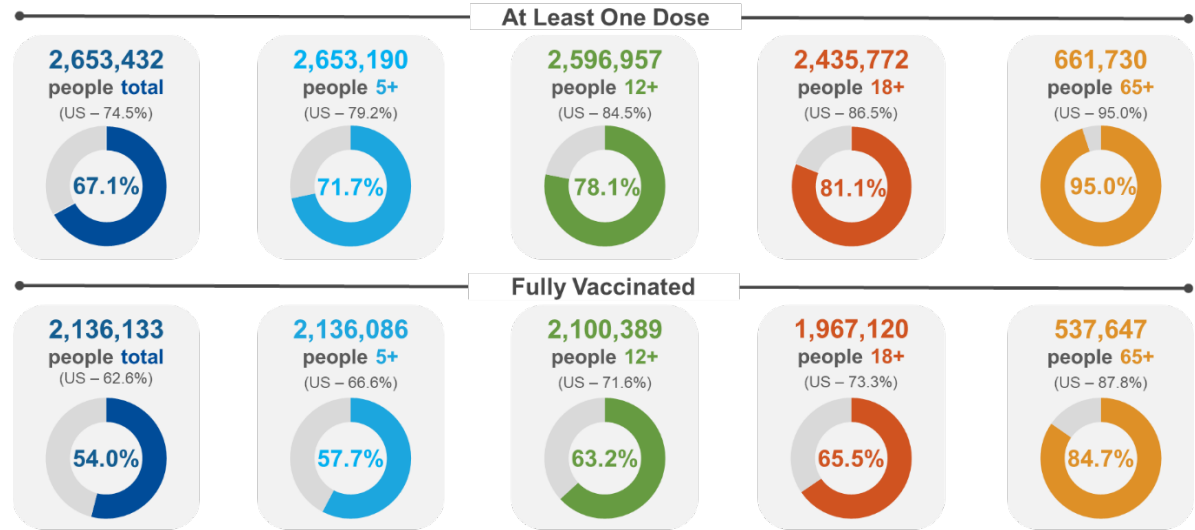
Source: COVID-19 Vaccination Reporting Specification Dataset Oklahoma State Immunization Information System (OSIIS). Data reflect information entered as of 11:59PM 1/10/2022.

Data does not include doses administered by federal entities in Oklahoma

COVID-19 VACCINATIONS IN OKLAHOMA - FEDERAL AND STATE, AS OF JANUARY 10, 2022

	Count*	Adult Rate per 100K
Total Doses Administered	5,425,669	167,438
Additional doses (booster/3rd) Administered	686,172	na

*Includes state and federal administered doses.



Percent of 5+ Population with At Least 1 Dose- Oklahoma Counties

County	At Least 1 Dose (%)	County	At Least 1 Dose (%)	County	At Least 1 Dose (%)	County	At Least 1 Dose (%)	County	At Least 1 Dose (%)
Adair	53.7%	Cotton	60.1%	Jackson	66.1%	McIntosh	63.6%	Roger Mills	42.6%
Alfalfa	51.5%	Craig	67.7%	Jefferson	50.4%	Murray	53.4%	Rogers	56.2%
Atoka	41.5%	Creek	52.1%	Johnston	51.1%	Muskogee	67.1%	Seminole	63.4%
Beaver	38.2%	Custer	58.6%	Kay	51.6%	Noble	74.3%	Sequoyah	53.4%
Beckham	48.9%	Delaware	52.5%	Kingfisher	56.4%	Nowata	58.6%	Stephens	58.0%
Blaine	55.6%	Dewey	29.5%	Kiowa	61.5%	Okfuskee	53.8%	Texas	55.8%
Bryan	52.1%	Ellis	41.4%	Latimer	39.6%	Oklahoma	84.4%	Tillman	59.6%
Caddo	74.6%	Garfield	61.3%	LeFlore	46.7%	Okmulgee	50.5%	Tulsa	78.3%
Canadian	73.3%	Garvin	56.1%	Lincoln	48.4%	Osage	42.9%	Wagoner	57.9%
Carter	55.6%	Grady	46.7%	Logan	41.1%	Ottawa	48.7%	Washington	57.6%
Cherokee	66.0%	Grant	50.9%	Love	53.1%	Pawnee	59.8%	Washita	47.3%
Choctaw	43.0%	Greer	42.6%	Major	57.6%	Payne	60.3%	Woods	49.3%
Cimarron	39.6%	Harmon	58.6%	Marshall	56.7%	Pittsburg	55.8%	Woodward	45.0%
Cleveland	68.9%	Harper	51.6%	Mayes	54.9%	Pontotoc	63.4%		
Coal	47.4%	Haskell	48.9%	McClain	58.9%	Pottawatomie	61.0%		
Comanche	77.1%	Hughes	54.7%	McCurtain	44.2%	Pushmataha	41.6%		

Source: CDC COVID Data Tracker – COVID-19 Vaccinations in the United States and COVID-19 Integrated County View. Posted: 1/10/2022

STATE ADMINISTERED COVID- 19 VACCINATION DEMOGRAPHICS*

		Total Population >12 years of age	People who received at least 1 dose	People who are fully vaccinated
Oklahoma		3,325,223	2,130,637 (64.1%)	1,796,221 (54.0%)
Gender				
	Male	1,637,286 (49.2%)	991,374 (60.5%)	828,338 (50.6%)
	Female	1,687,937 (50.8%)	1,136,264 (67.3%)	965,989 (57.2%)
	Unknown		2,999	1,894
Age group				
	5-11	376,215 (11.3%)	48,717 (12.9%)	31,214 (8.3%)
	12-17	320,490 (9.6%)	126,793 (39.6%)	107,015 (33.4%)
	18-24	380,905 (11.5%)	184,115 (48.3%)	149,713 (39.3%)
	25-34	543,593 (16.3%)	273,191 (50.3%)	225,130 (41.4%)
	35-44	497,873 (15.0%)	298,492 (60.0%)	251,707 (50.6%)
	45-54	453,536 (13.6%)	295,076 (65.1%)	251,321 (55.4%)
	55-64	493,694 (14.8%)	358,247 (72.6%)	307,461 (62.3%)
	65-74	368,050 (11.1%)	322,096 (87.5%)	278,970 (75.8%)
	75-84	192,919 (5.8%)	164,618 (85.3%)	142,897 (74.1%)
	85+	74,163 (2.2%)	59,148 (79.8%)	50,774 (68.5%)
Race				
	White	2,610,851 (78.5%)	1,313,503 (50.3%)	1,175,990 (45.0%)
	Black	282,592 (8.5%)	119,516 (42.3%)	103,101 (36.5%)
	Asian/PI	94,874 (2.9%)	72,717 (76.6%)	63,171 (66.6%)
	American Indian	336,906 (10.1%)	130,086 (38.6%)	104,080 (30.9%)
	Other	-	93,791	75,417
	Unknown	-	401,024	274,462
Ethnicity				
	Hispanic or Latino	323,153 (9.7%)	196,314 (60.7%)	166,840 (51.6%)
	Not Hispanic or Latino	3,002,070 (90.3%)	1,343,366 (44.7%)	1,226,120 (40.8%)
	Unknown	-	590,957	403,261

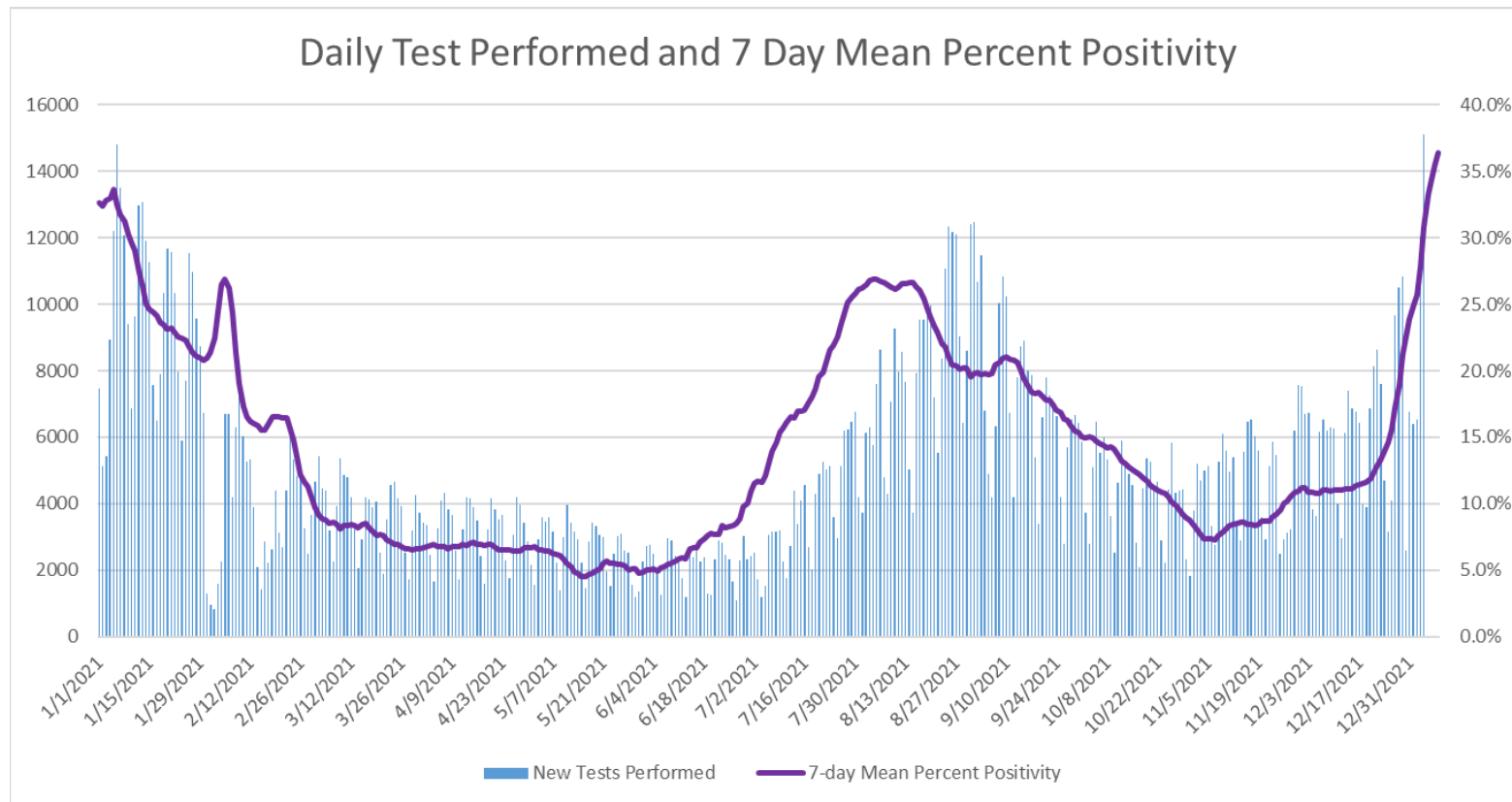
Note: Fully vaccinated refers to individuals (ages 5 years+) completing series after receiving either Pfizer and/or Moderna COVID-19 vaccines (both doses) and/or receiving single shot of J&J/Janssen Vaccine. Data Source: 1. Single-race Population Estimates, United States, 2010-2019. July 1st resident population by state, age, sex, single-race, and Hispanic origin, on CDC WONDER Online Database. Vintage 2019 estimates released by U.S. Census Bureau on June 25, 2020 COVID-19. 2. Vaccination Reporting Specification (CVRS) Dataset - Oklahoma State Immunization Information System (OSIIS); Data reflect information entered as of 11:59PM 1/10/2022. ***Data does not include doses administered by federal entities in Oklahoma.**

DISEASE TESTING

Jan 02 – Jan 08	
Specimens tested, count	61,073*
Specimens positive, count	38,212
Percent positive	36.4%

Source: CDC COVID Data Tracker CDC | Data as of: Tuesday, January 11, 2022 2:08 PM ET. Posted: Tuesday, January 11, 2022 3:40 PM ET
 *(Counts reflect the tests and specimens reported since Jan 05.)

COVID-19 DAILY TESTS PERFORMED AND 7 DAY MEAN PERCENT POSITIVITY

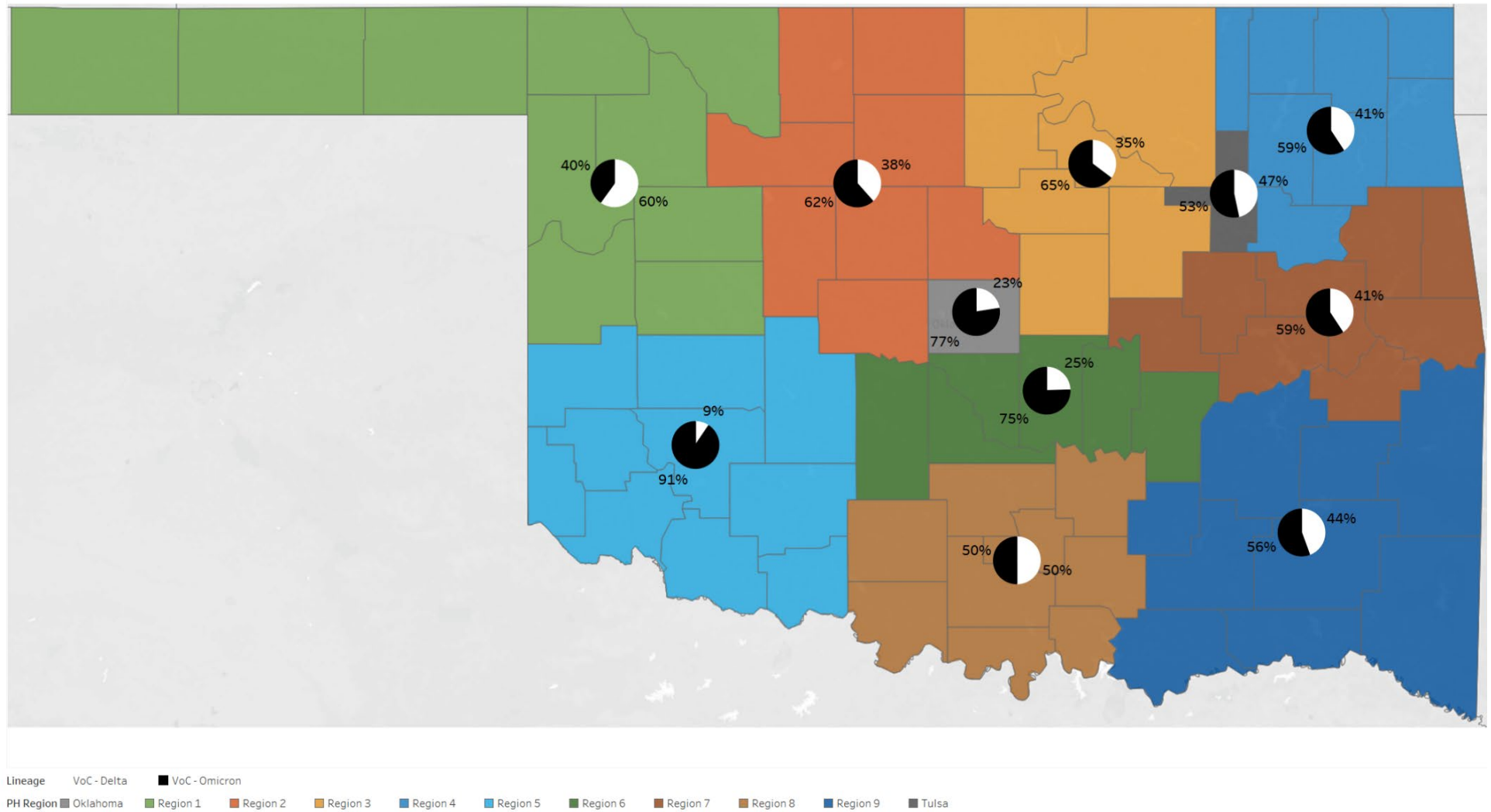


Oklahoma, January 11, 2022

Source: CDC COVID Data Tracker CDC | Data as of: Tuesday, January 11, 2022 2:08 PM ET. Posted: Tuesday, January 11, 2022 3:40 PM ET

COVID-19 VARIANT STRAINS SEQUENCED BY THE OKLAHOMA PUBLIC HEALTH LAB (PHL)

Variant Proportions by Region December 23, 2021 - January 6, 2022 (N=713):



Note: Data presented represent samples sequenced by the Oklahoma Public Health Lab (PHL). The PHL sequences all samples which are received and that meet necessary sample collection and specimen quality requirements. As additional samples are sequenced, these percentages may change.

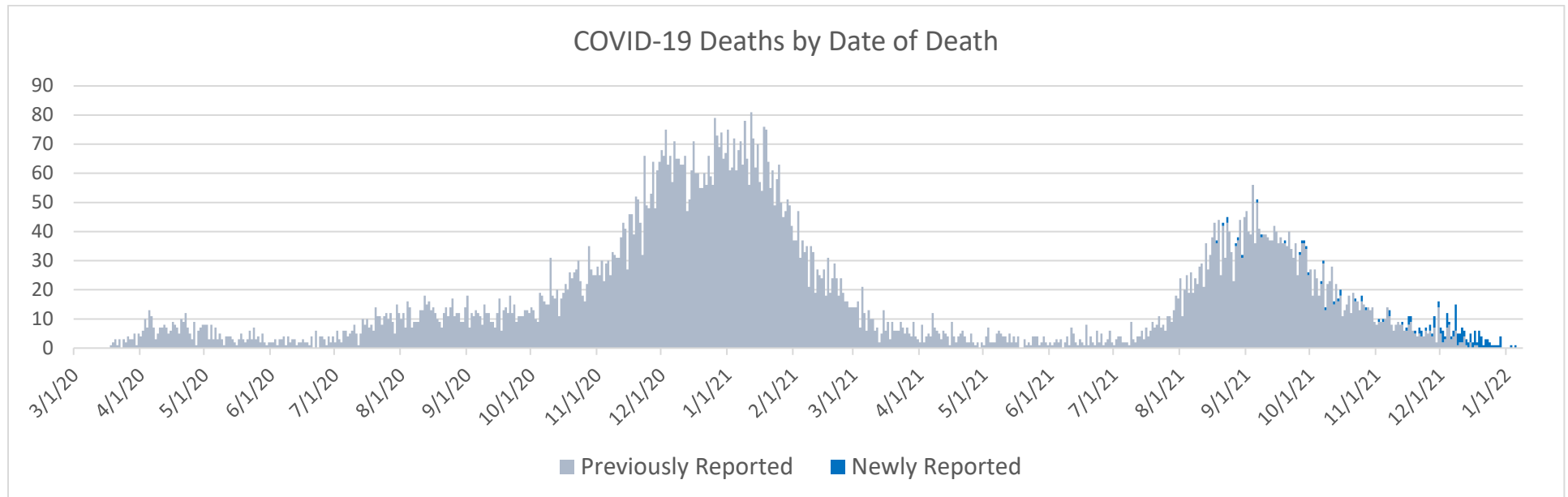
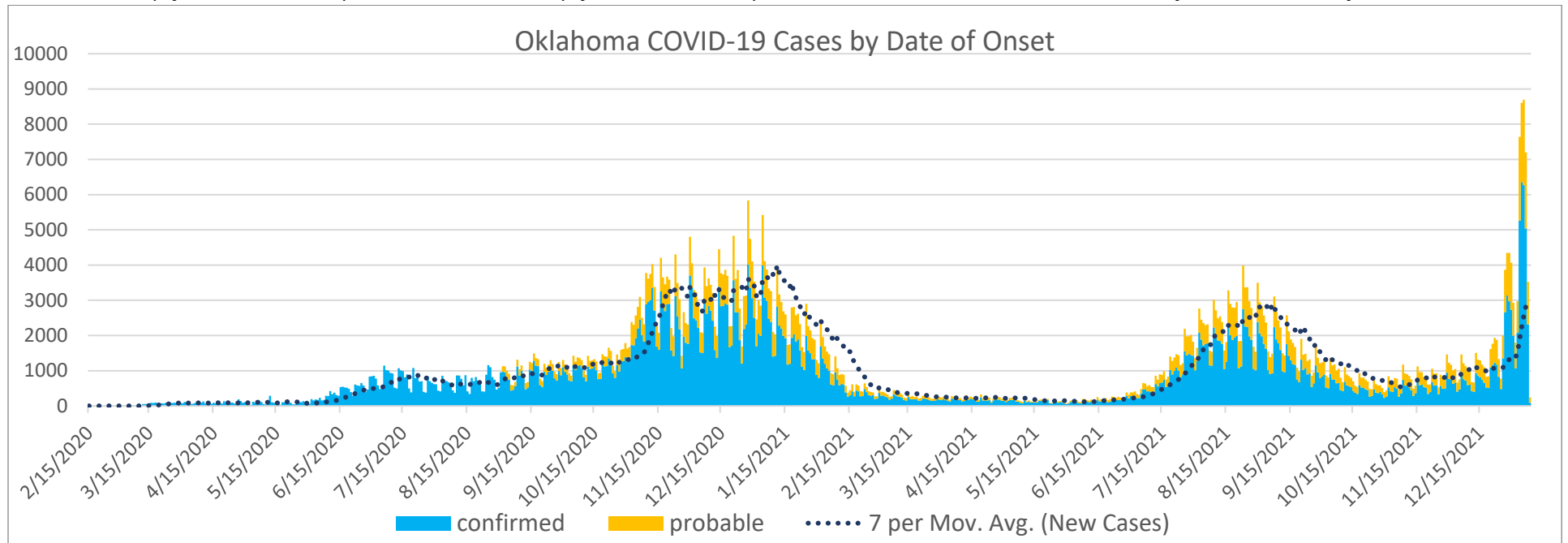
DISTRIBUTION OF RECENT COVID-19 HOSPITAL ADMISSIONS BY VACCINATION STATUS AND AGE GROUP AS OF JANUARY 1, 2022*

Vaccination Status	Age Group	Hospital Admissions in the last 30 days***	Percentage within Vaccination Status Category	Percentage of Total Hospitalizations
Non-Vaccinated	Under 1- 4	6	0.6%	0.5%
	5-17	10	1.0%	0.8%
	18-35	82	8.1%	6.7%
	36-49	118	11.6%	9.6%
	50-64	264	25.9%	21.5%
	65+	323	31.7%	26.3%
	Unknown	215	21.1%	17.5%
	Total	1,018	100.0%	83.0%
Fully Vaccinated*	5-17	0	0.0%	0.0%
	18-35	9	5.1%	0.7%
	36-49	11	6.3%	0.9%
	50-64	37	21.1%	3.0%
	65+	113	64.6%	9.2%
	Unknown	5	2.9%	0.4%
	Total	175	100.0%	14.3%
Partially Vaccinated**	5-17	0	0.0%	0.0%
	18-35	2	6.1%	0.2%
	36-49	2	6.1%	0.2%
	50-64	6	18.2%	0.5%
	65+	21	63.6%	1.7%
	Unknown	2	6.1%	0.2%
	Total	33	100.0%	2.7%
Total Hospitalizations	1,226			

* Data are preliminary and subject to change as more information is gathered, reviewed and quality assurance procedures are applied. The information presented in the table above (hospital admissions by vaccination status) will be limited to cases reported two (2) weeks prior allowing for additional review and quality assurance checks to be applied. *Fully Vaccinated Vaccine breakthrough cases are defined as an individual with a COVID-19 positive laboratory results (PCR/Antigen) and documentation of COVID-19 vaccination that meets the definition of fully vaccinated. (Individuals are considered fully vaccinated ≥ 2 weeks after receiving the last dose in the COVID-19 vaccine series.) **Partially Vaccinated Vaccine breakthrough cases is defined as an individual with a COVID-19 positive laboratory result (PCR/Antigen) and documentation of one COVID-19 vaccination. (Individuals are considered partially vaccinated ≥ 2 weeks after receiving the first dose in a 2-dose COVID-19 vaccine series.) ***Numbers based on hospital admission date within the past 30 days as reported in the OSDH PHIDDO system.

CASES AND DEATHS

New cases (by date of onset) and new deaths (by date of death) of COVID-19 in Oklahoma, February 2020–January 2022



Please note the different axes for new cases (top—from 0 to 10,000 for new cases) and new deaths (bottom—from 0 to 90 for new deaths). Additionally, a 7-day lag has been applied to the COVID-19 case trend line based on information.

DEMOGRAPHIC INFORMATION AS OF JANUARY 11, 2021

		Cases count (%) ¹		Deaths count (%) ¹		Cumulative Incidence Rate ²	Cumulative Mortality Rate ²
Oklahoma		765,013		11,741		19,333.3	296.7
Gender							
	Male	357,288	(46.7)	6,497	(55.3)	18,293.9	332.7
	Female	407,725	(53.3)	5,244	(44.7)	20,488.4	263.5
	Unknown	0	(0.0)	0	(0.0)		
Age group							
	Under 1- 4	17,891	(2.3)	3	(0.0)	7,001.4	1.2
	5-11	39,204	(5.1)	1	(0.0)	10,420.6	0.3
	12-17	55,295	(7.2)	7	(0.1)	17,253.3	2.2
	18-24	98,149	(12.8)	25	(0.2)	25,767.3	6.6
	25-34	128,878	(16.8)	103	(0.9)	23,708.5	18.9
	35-44	119,789	(15.7)	332	(2.8)	24,060.2	66.7
	45-54	100,684	(13.2)	800	(6.8)	22,199.8	176.4
	55-64	88,745	(11.6)	1,724	(14.7)	17,975.7	349.2
	65-74	57,877	(7.6)	2,732	(23.3)	15,725.3	742.3
	75-84	30,086	(3.9)	3,022	(25.7)	15,595.1	1,566.5
	85+	13,322	(1.7)	2,895	(24.7)	17,963.1	3,903.6
	Unknown	15,093	(2.0)	97	(0.8)		
Race							
	American Indian or Alaska Native	94,088	(12.3)	1,215	(10.3)	30,629.3	395.5
	Asian or Pacific Islander	12,569	(1.6)	118	(1.0)	14,193.8	133.3
	Black or African American	45,195	(5.9)	760	(6.5)	15,710.2	264.2
	Multiracial/Other	6,052	(0.8)	75	(0.6)	1,462.7	18.1
	White	426,086	(55.7)	8,423	(71.7)	14,971.9	296.0
	Unknown	181,023	(23.7)	1,150	(9.8)		
Ethnicity							
	Hispanic or Latino	58,160	(7.6)	608	(5.2)	13,554.6	141.7
	Not Hispanic or Latino	410,368	(53.6)	9,611	(81.9)	11,678.1	273.5
	Unknown/Other	296,485	(38.8)	1,522	(13.0)		

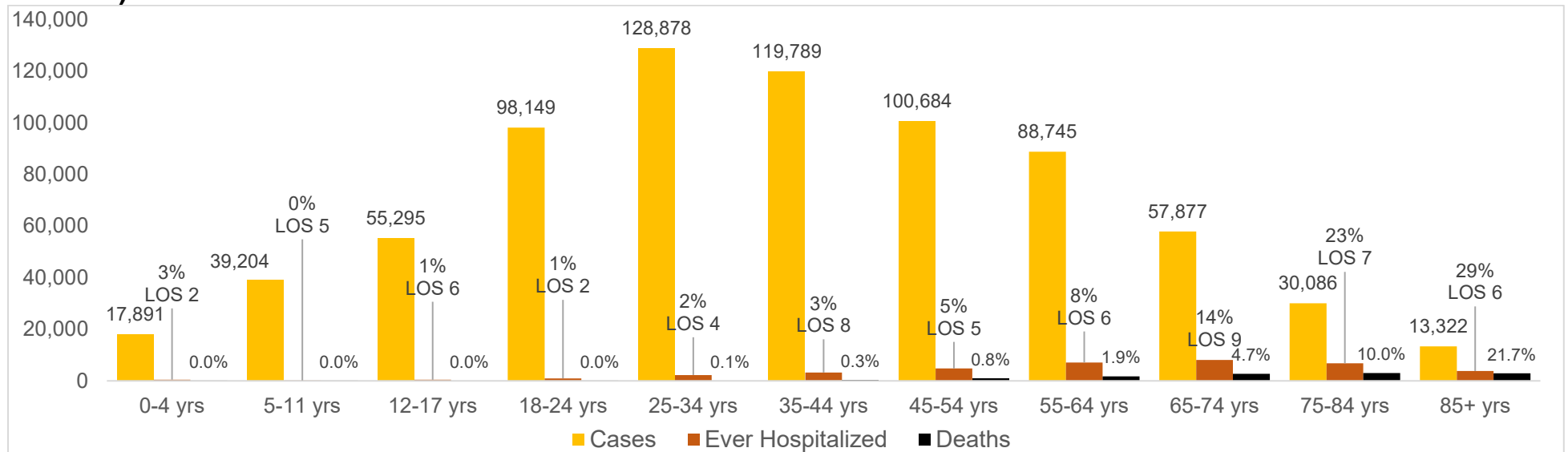
1. Percentages may not add up to 100 due to rounding. 2. Rate per 100,000 population based on 2019 Census Population data. "A number of corrections, and updates, to previously reported cases occurred with the December 30, 2021 data release. As a result, some counties saw an increased number of cases, while others decreased. Data has since stabilized and future, significant, corrections are not expected."

NEW CASES, HOSPITALIZATIONS, AND DEATHS BY AGE GROUP FOR WEEK OF JAN 2-8*

Age group	Percentage of Population Fully Vaccinated	New Cases (%)	New Hospitalizations (%)	New Deaths (%)
Under 1- 4	-	1431 (2.9%)	15 (2.7%)	0 (0.0%)
5-11	8.3%	2186 (4.4%)	0 (0.0%)	0 (0.0%)
12-17	33.4%	3090 (6.3%)	5 (0.9%)	0 (0.0%)
18-24	39.3%	7914 (16.1%)	10 (1.8%)	0 (0.0%)
25-34	41.4%	10474 (21.3%)	30 (5.4%)	2 (1.9%)
35-44	50.6%	8275 (16.8%)	42 (7.6%)	5 (4.6%)
45-54	55.4%	6560 (13.3%)	81 (14.7%)	17 (15.7%)
55-64	62.3%	4825 (9.8%)	106 (19.2%)	18 (16.7%)
65-74	75.8%	2790 (5.7%)	106 (19.2%)	22 (20.4%)
75-84	74.1%	1269 (2.6%)	116 (21.0%)	26 (24.1%)
85+	68.5%	450 (0.9%)	41 (7.4%)	18 (16.7%)
Unknown	-	-1,121	-47	-14

A number of corrections, and updates, to previously reported cases occurred with the December 30, 2021 data release. Data has since stabilized and future, significant, corrections are not expected.

CUMULATIVE CASES, PERCENT HOSPITALIZED, AVERAGE LENGTH OF STAY (NOVEMBER 2021 CASES) AND DEATHS BY AGE GROUP



AT-RISK SETTINGS

HEALTHCARE & NON-HEALTHCARE*

Status	Non-Healthcare Worker count (%)	Healthcare Worker count (%)
Active	7,959 (1.3)	2 (0.0)
Deceased	10,999 (1.7)	88 (0.5)
Recovered	616,932 (97.0)	19,531 (99.5)
Total	635,890	19,621

*data as of November 16, 2021

LONG TERM CARE (LTC) FACILITIES²

	Cases (%)	Deaths (%)
Residents	9,509 (61.3)	1,809 (98.8)
Staff	5,993 (38.7)	22 (1.2)
Total	15,502	1,831

²Long term care facility or nursing home.

CORRECTIONAL FACILITIES¹

	Cases (%)	Deaths (%)
Inmates	5,464 (74.5%)	58 (92.1%)
Staff	1,869 (25.5%)	5 (7.9%)
Total	7,333	63

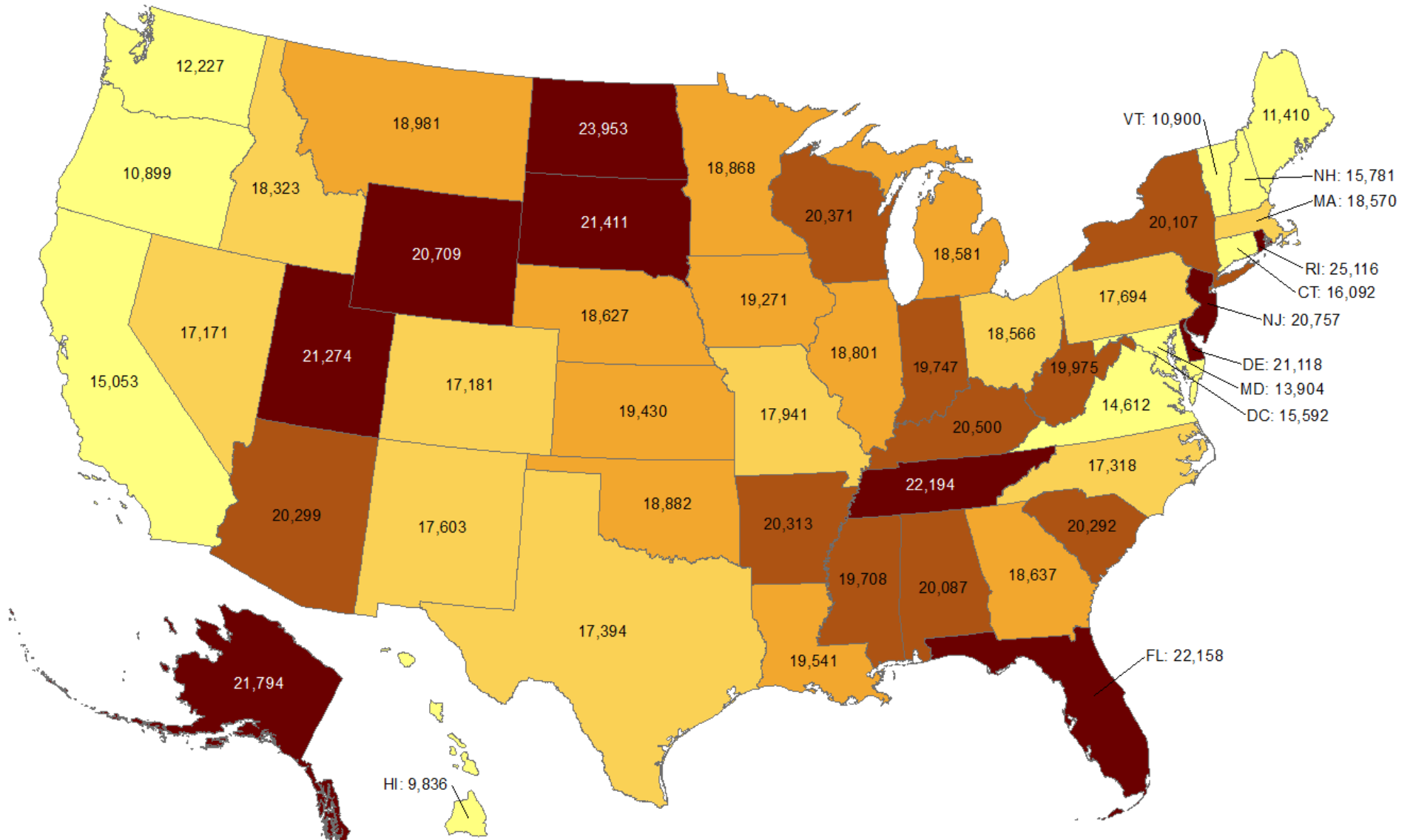
¹Correctional facilities include prisons, jails, and juvenile detention center

Detailed counts of LTC Cases by County and Facility can be found at the end of this report.

OKLAHOMA IN COMPARISON

Cumulative incidence of reported COVID-19 cases

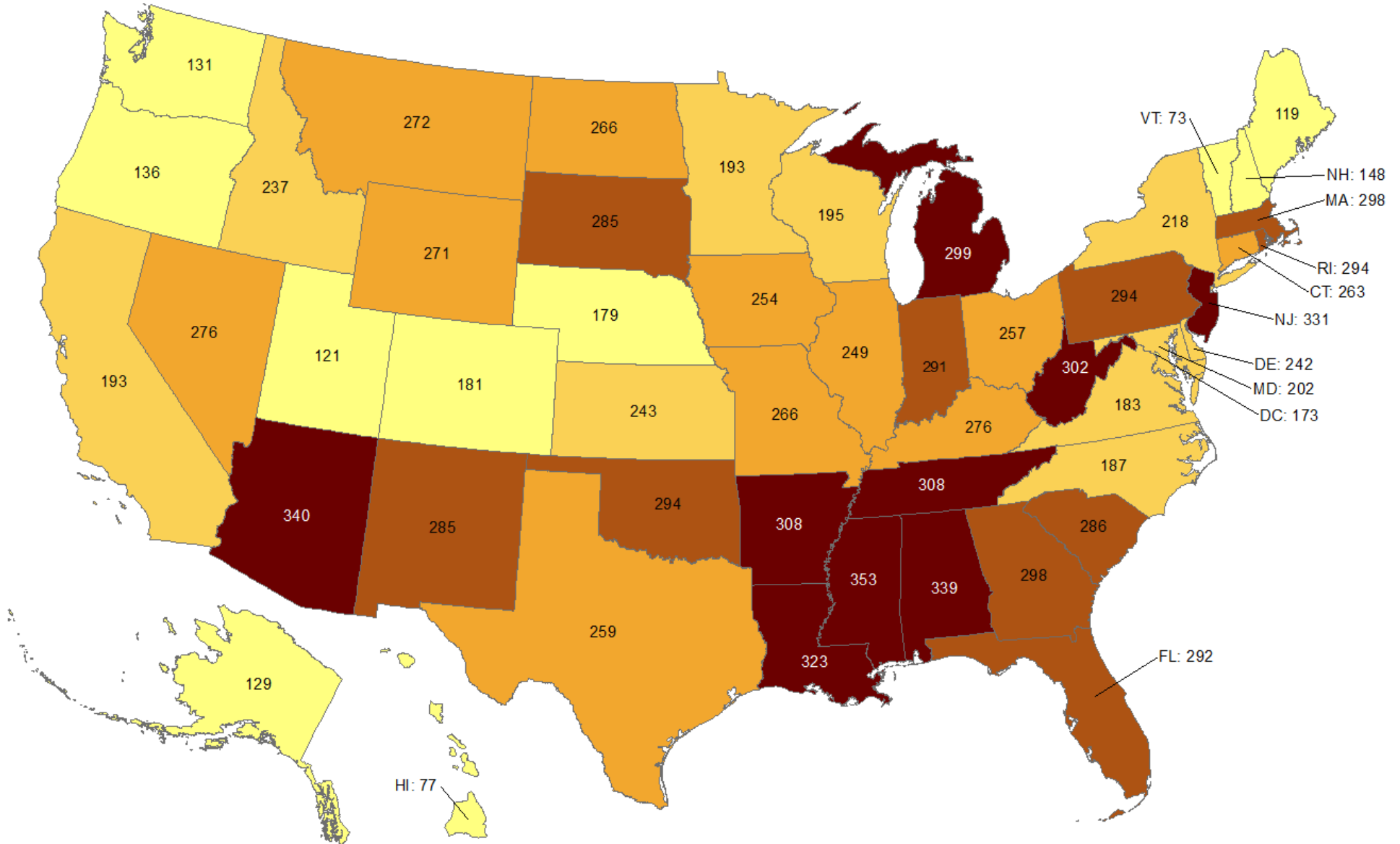
Oklahoma ranks **25** (out of all States and DC) in the cumulative incidence (per 100,000 persons) of reported COVID-19 cases in the US.



Data from CDC. Available at <https://www.cdc.gov/covid-data-tracker/index.html>
 Data as of January 10, 2022

Cumulative death rate of reported COVID-19 cases

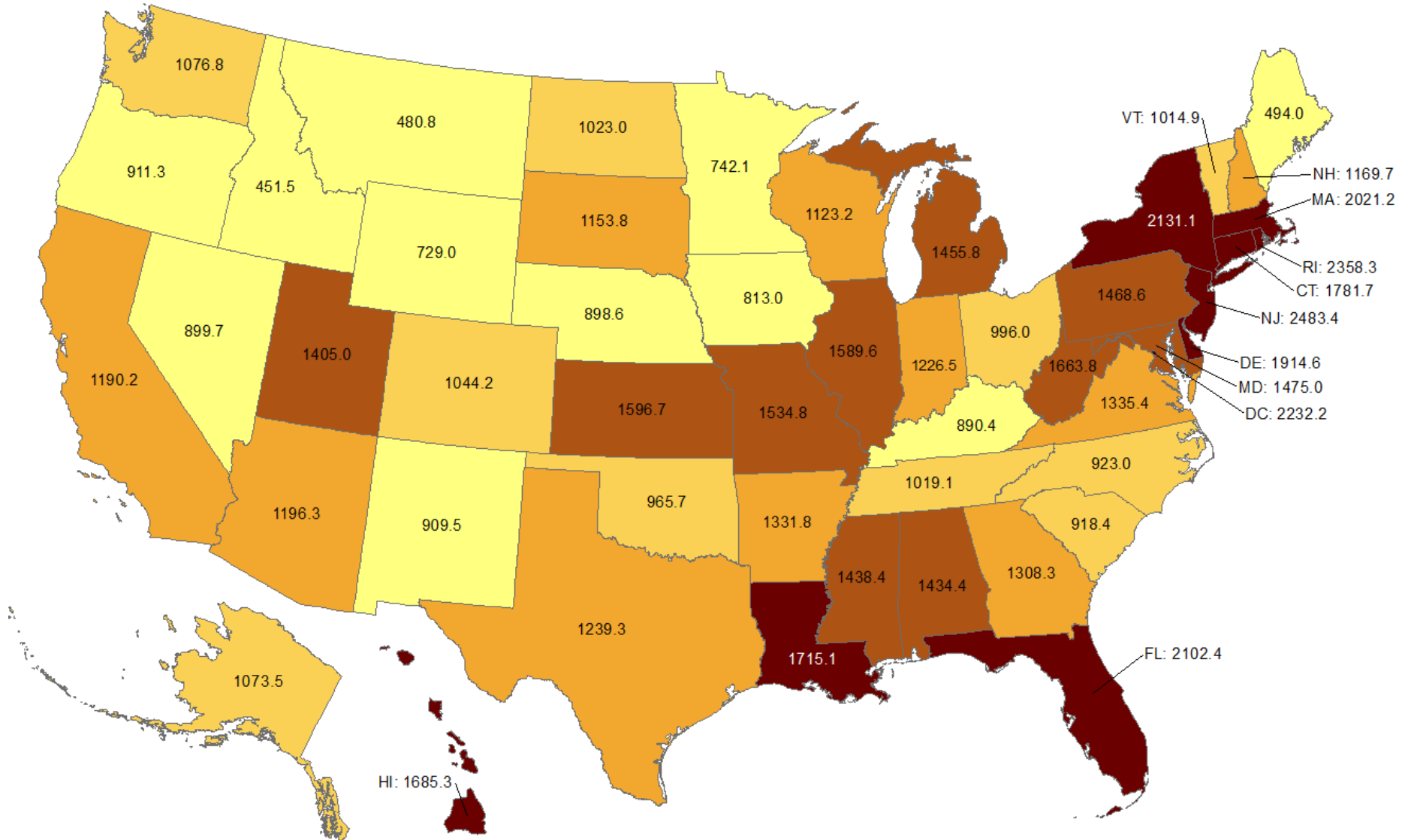
Oklahoma ranks **13** (out of all States and DC) in the cumulative death rate (per 100,000 persons) of reported COVID-19 cases in the US.



Data from CDC. Available at <https://www.cdc.gov/covid-data-tracker/index.html>
Data as of January 10, 2022

Cumulative incidence of reported COVID-19 cases in last 7 days

Oklahoma ranks **38** (out of all States and DC) in the cumulative incidence (per 100,000 persons) of reported COVID-19 cases in the last 7 days.



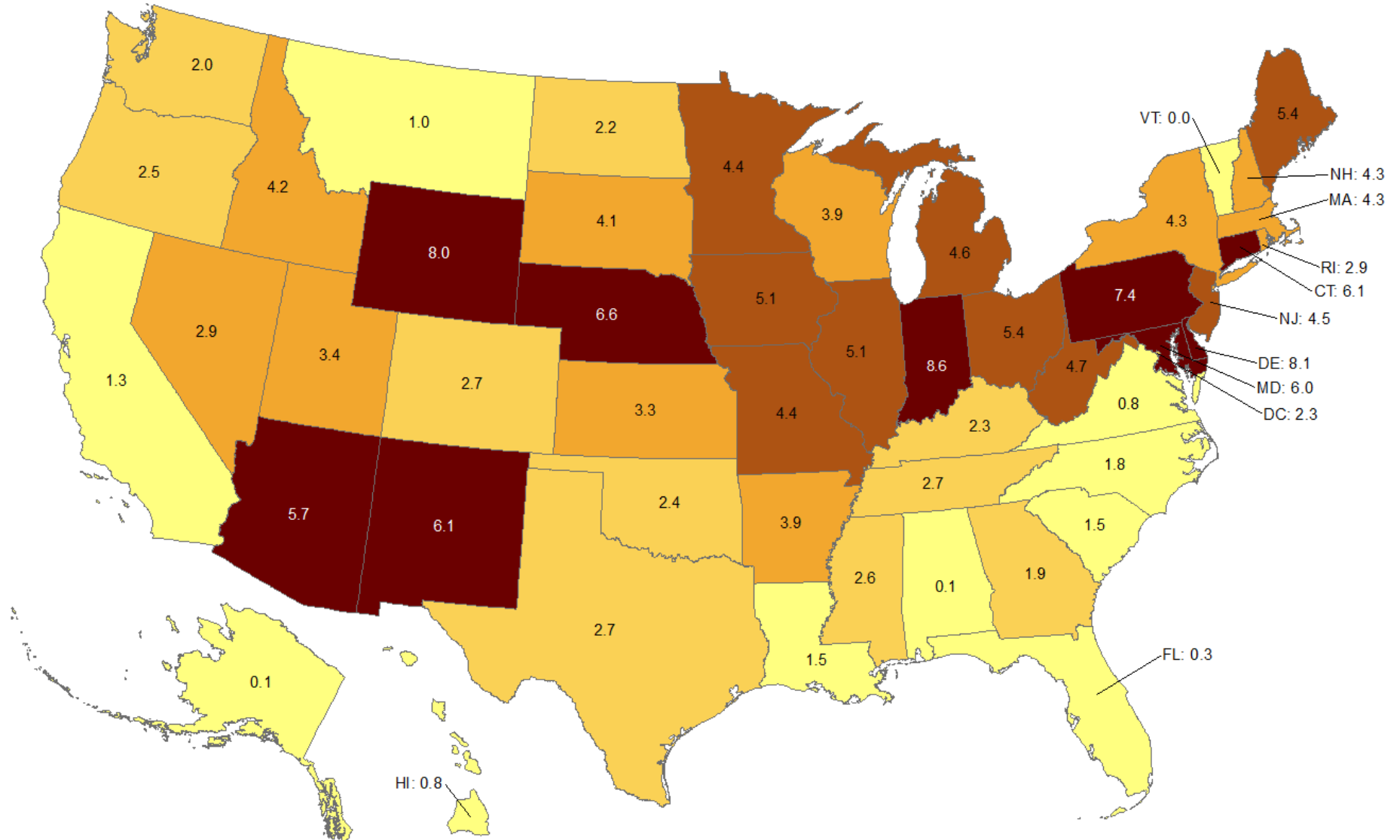
Data from CDC. Available at <https://www.cdc.gov/covid-data-tracker/index.html>

Data as of January 10, 2022

NOTE: Totals per 100,000 people in the last 7 days are calculated as the 7-day moving average of new cases or deaths (January 10, 2022 + 6 preceding days divided by 7) per 100,000 people using the U.S. Census Bureau, 2019.

Cumulative death rate of reported COVID-19 cases in last 7 days

Oklahoma ranks **35** (out of all States and DC) in the cumulative death rate (per 100,000 persons) of reported COVID-19 cases in the last 7 days.

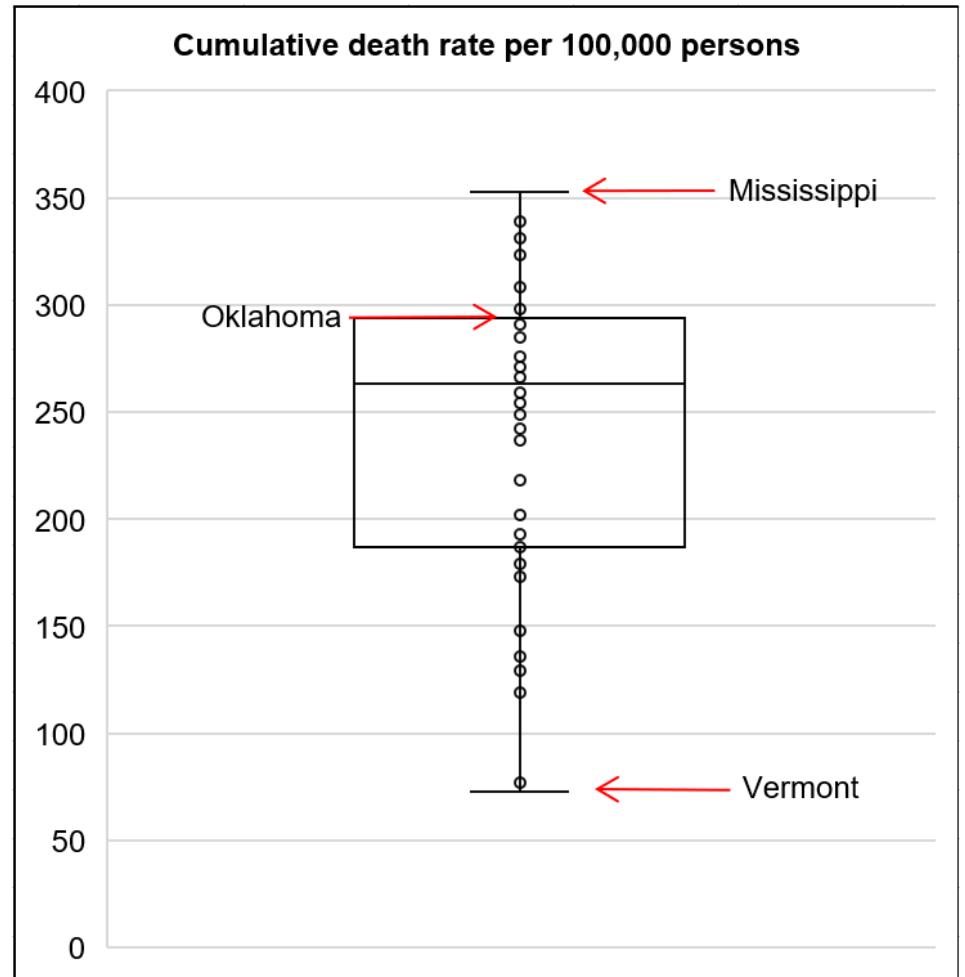
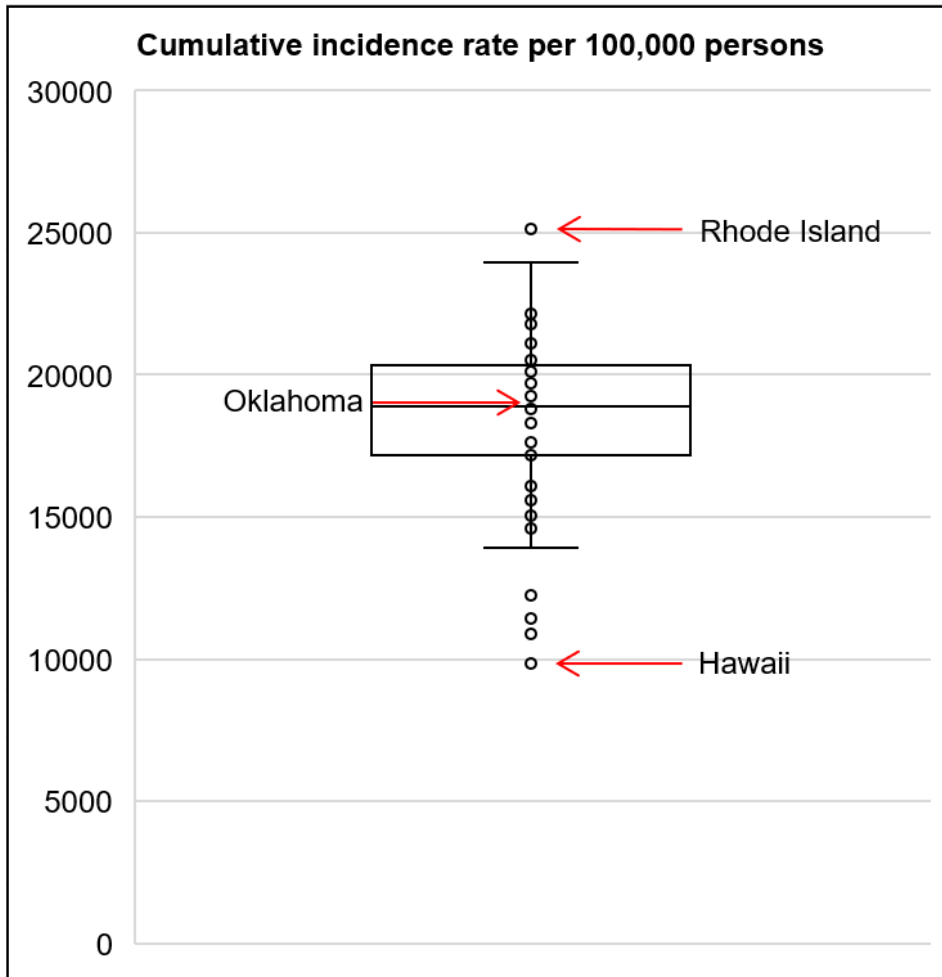


Data from CDC. Available at <https://www.cdc.gov/covid-data-tracker/index.html>

Data as of January 10, 2022

NOTE: Totals per 100,000 people in the last 7 days are calculated as the 7-day moving average of new cases or deaths (January 10, 2022 + 6 preceding days divided by 7) per 100,000 people using the U.S. Census Bureau, 2019.

Cumulative incidence and cumulative death rate of reported COVID-19 cases



Interpretation: Oklahoma has cumulative incidence rate that is **below the 75th percentile** of the US and cumulative death rate that is **at the 75th percentile** for the US.

Data from CDC. Available at <https://www.cdc.gov/covid-data-tracker/index.html>
Data as of January 10, 2021

OKLAHOMA EXCESS DEATH ANALYSIS

- + indicates observed count above threshold
- Predicted number of deaths from all causes
- average expected number of deaths
- upper bound threshold for excess deaths

Weekly number of deaths (from all causes)

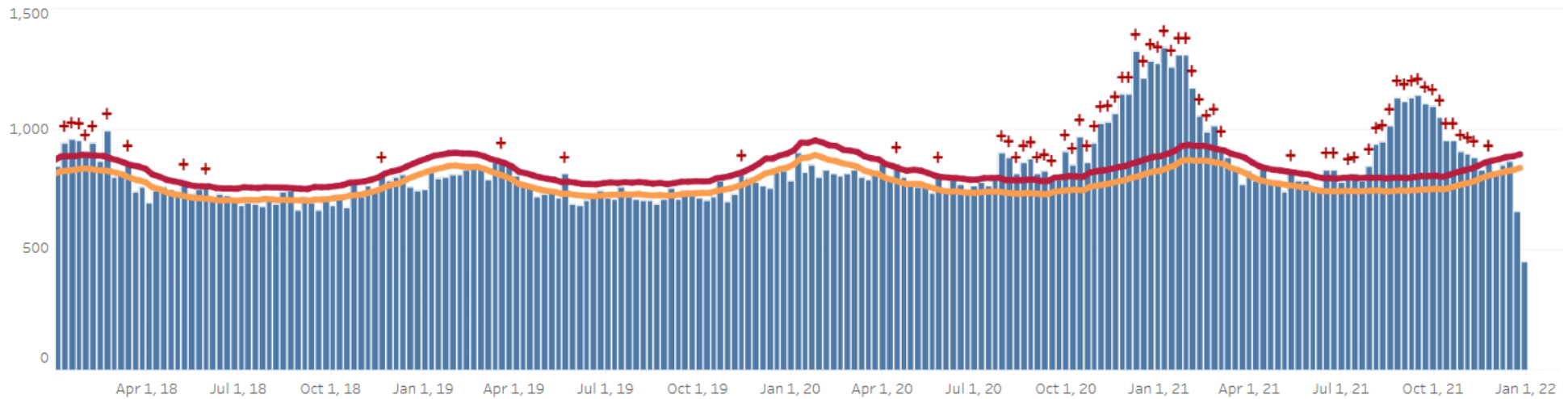


Figure notes: Contains data up to the week-ending date of December 25, 2021. Data in recent weeks are incomplete. Only 60% of the death records are submitted to NCHS within 10 days of the date of death, and completeness varies by jurisdiction.

Source: CDC, National Center for Health Statistics, https://www.cdc.gov/nchs/nvss/vsrr/covid19/excess_deaths.htm#dashboard, January 11, 2022 5 PM

COVID-19 LTC OR NURSING HOME ASSOCIATED CASES BY COUNTY

Status as of 7:00 AM January 11, 2022

Data are preliminary and are subject to change as cases are processed.

County of Residence	Cases	Recovered**	Deaths
Adair	43	35	8
Alfalfa	11	11	0
Atoka	105	99	6
Beaver	26	23	3
Beckham	181	163	17
Blaine	51	48	3
Bryan	303	270	27
Caddo	179	158	21
Canadian	315	285	22
Carter	218	174	35
Cherokee	170	142	27
Choctaw	122	110	12
Cleveland	850	710	127
Coal	73	65	8
Comanche	312	261	36
Cotton	54	45	9
Craig	62	57	4
Creek	283	250	30
Custer	264	211	48

County of Residence	Cases	Recovered**	Deaths
Delaware	270	219	47
Dewey	22	21	1
Ellis	12	12	0
Garfield	363	320	41
Garvin	101	93	7
Grady	244	207	35
Grant	13	11	2
Greer	68	59	8
Harmon	58	56	2
Harper	3	2	1
Haskell	72	67	5
Hughes	43	42	1
Jackson	132	111	20
Jefferson	28	25	3
Johnston	39	32	6
Kay	244	216	27
Kingfisher	131	113	15
Kiowa	55	45	9
Latimer	49	42	6
Le Flore	289	271	18
Lincoln	147	122	25
Logan	188	162	25
Love	29	26	3

County of Residence	Cases	Recovered**	Deaths
Major	79	67	12
Marshall	41	38	1
Mayes	162	153	9
McClain	175	157	15
McCurtain	117	95	20
McIntosh	145	131	14
Murray	93	86	7
Muskogee	478	429	48
Noble	156	153	3
Nowata	90	88	1
Okfuskee	47	46	1
Oklahoma	2,222	1,891	274
Okmulgee	128	122	3
Osage	132	117	14
Ottawa	273	250	23
Pawnee	124	103	20
Payne	173	157	9
Pittsburg	359	322	36
Pontotoc	90	80	9
Pottawatomie	253	227	25
Pushmataha	74	68	5
Roger Mills	3	2	1
Rogers	585	493	88

County of Residence	Cases	Recovered**	Deaths
Seminole	217	205	9
Sequoyah	118	100	14
Stephens	349	282	21
Texas	72	62	10
Tillman	33	31	2
Tulsa	1,735	1,411	302
Wagoner	205	183	20
Washington	374	323	50
Washita	54	50	2
Woods	51	44	6
Woodward	73	66	7
<i>Total</i>	<i>15,502</i>	<i>13,423</i>	<i>1,831</i>

** Recovered case: is not deceased and 14 days after symptom onset/specimen collection. Please note that the definition for recovered was changed starting May 4, 2021 due to incomplete data on hospitalizations which may result in an inaccurate estimation of the active cases.

COVID-19 LTC OR NURSING HOME ASSOCIATED CASES BY FACILITY

Status as of 7:00 AM January 11, 2022

Data are preliminary and are subject to change as cases are processed.

Facility	Cases	Recovered**	Deaths
Aberdeen Heights Assisted Living Community	16	13	3
Aberdeen Memory Care of Tulsa	7	3	4
Accel at Crystal Park	55	45	10
Ada Care Center	14	14	0
Adams PARC Post Acute Recovery Center	112	92	20
Albert Hall	7	7	0
Alcis Place	1	1	0
Ambassador Manor Nursing Center	40	29	11
Anadarko Nursing & Rehab	45	43	2
Angelwood Assisted Living and Memory Care	1	1	0
Antlers Manor	29	29	0
Arbor House Assisted Living Center - Norman	24	16	8
Arbor House Assisted Living Center of Mustang	37	30	7
Arbor House Assisted Living of Midwest City	4	3	1
Arbor House Reminisce	36	28	8
Arbor Village	21	18	2
Artesian Home	29	25	4
Ash Street Place	7	7	0
Ashbrook Village	6	6	0
Aspen Health and Rehab	15	15	0

Facility	Cases	Recovered**	Deaths
Atoka Manor	95	89	6
Autumn Leaves of Edmond	34	30	4
Autumn Leaves of Southwest Oklahoma City	3	2	1
Autumn Leaves of Tulsa	6	5	1
Avondale Cottage of Pryor	1	1	0
Avonlea Cottage of Seminole	27	25	2
Avonlea Cottage of Shawnee, LLC	10	10	0
Ayers Nursing Home	21	14	7
Ballard Nursing Center	27	22	5
Baptist Village of Hugo	74	68	6
Baptist Village of Oklahoma City	91	73	5
Baptist Village of Owasso	59	47	12
Baptist Village of Owasso AL	27	26	1
Barnsdall Nursing Home	15	14	1
Bartlesville Assisted Living	35	35	0
Bartlesville Health and Rehabilitation Community	112	89	22
Beacon Ridge	16	16	0
Beadles Nursing Home	36	30	5
Beare Manor	33	24	9
Beaver County Nursing Home	25	22	3
Beehive Homes of Broken Arrow	1	1	0
Beehive Homes of Glenpool	3	3	0
Belfair of McAlester	14	12	2

Facility	Cases	Recovered**	Deaths
Belfair of Shawnee	4	4	0
Bell Avenue Nursing Center	44	39	5
Bellarose Senior Living	8	5	3
Bellevue Health and Rehabilitation	111	88	21
Betty Ann Nursing Center	31	29	2
Beverly Place	1	1	0
Billings Fairchild Center, Inc	131	130	1
Binger Nursing and Rehabilitation	63	51	12
Blue Ridge Place	3	3	0
Blue River Healthcare, Inc	26	21	5
Boyce Manor Nursing Home	15	14	1
Bradford Village Healthcare Center: Nursing Home	24	20	4
Brentwood Extended Care & Rehab	33	31	2
Broadway Living Center	9	6	1
Broadway Manor Nursing Home	51	43	8
Broken Arrow Assisted Living	7	5	2
Broken Arrow Nursing Home, Inc.	38	32	6
Broken Bow Nursing Home	59	46	12
Brookdale Ada	5	5	0
Brookdale Bartlesville North	23	19	4
Brookdale Bartlesville South	16	14	2
Brookdale Broken Arrow	14	12	2
Brookdale Cedar Ridge	18	16	2

Facility	Cases	Recovered**	Deaths
Brookdale Chickasha	23	17	6
Brookdale Claremore	7	6	1
Brookdale Durant	27	25	2
Brookdale Edmond Danforth	20	16	4
Brookdale Edmond Santa Fe	6	6	0
Brookdale Enid	4	4	0
Brookdale Muskogee	23	17	6
Brookdale Norman	1	1	0
Brookdale Owasso	3	3	0
Brookdale Shawnee	2	1	1
Brookdale Stillwater	5	4	1
Brookdale Tulsa 71st and Sheridan	72	58	14
Brookdale Tulsa Midtown	11	8	3
Brookdale Tulsa South	8	7	1
Brookdale Village	3	2	1
Brookdale Weatherford	14	12	2
Brookridge Retirement Community	8	8	0
Brookside Nursing Center	10	9	0
Brookwood Skilled Nursing and Therapy	16	10	3
Burford Manor	24	23	1
Calera Manor, LLC	48	42	4
Callaway Nursing Home	14	14	0
Canoe Brook Ardmore	7	7	0

Facility	Cases	Recovered**	Deaths
Capitol Hill Skilled Nursing and Therapy	53	43	9
Carnegie Nursing Home, Inc.	41	35	6
Cearu Medical Resort	3	2	0
Cedar Creek Nursing Center	81	76	5
Cedar Crest Manor	41	31	0
Cedarcrest Care Center	53	44	9
Center of Family Love	18	18	0
Chandler Therapy & Living Center, LLC	60	51	9
Checotah Nursing Center	8	6	2
Cherokee County Nursing Center	67	57	10
Chickasha Nursing Center, Inc	13	9	4
Chisholm Trail Assisted Living	24	23	1
Choctaw Nation Nursing Home	37	32	5
Cimarron Nursing Center	26	20	4
Cimarron Pointe Care Center	28	25	3
Claremore Skilled Nursing and Therapy	37	32	5
Cleveland Manor Nursing & Rehab	72	61	10
Clinton Therapy & Living Center	12	11	0
Colonial Manor II	60	58	2
Colonial Manor Nursing Home	25	21	4
Colonial Park Manor, LLC	6	6	0
Colonial Terrace Care Center	29	29	0
Community Health Care of Gore	18	14	0

Facility	Cases	Recovered**	Deaths
Community Health Center	11	9	2
Copp's Residential Care, Inc	4	4	0
Cordell Christian	14	12	0
Corn Heritage Village and Rehab	30	28	1
Corn Heritage Village and Rehab of Weatherford	67	56	11
Cottonwood Creek Skilled Nursing & Therapy	37	31	6
Country Club Care	97	88	7
Country Club at Woodland Hills	10	10	0
Country Gardens Assisted Living Community	2	2	0
Country Lane	4	4	0
Country Place	1	1	0
Countryside Estates	19	17	2
Countrywood Assisted Living and Memory Care	12	8	4
Covenant Living at Inverness	32	29	3
Covenant Living of Bixby	6	6	0
Coweta Manor Nursing Home	76	64	12
Creek Place	3	3	0
Creekside Village	14	13	1
Cross Place	1	1	0
Cross Timbers Nursing and Rehabilitation	60	57	3
Crossroads Residential Care	16	14	2
Crystal Place, LLC	1	1	0
Dogwood Creek Retirement Center	11	11	0

Facility	Cases	Recovered**	Deaths
Dorset Place - Assisted Living	2	2	0
Dr W F & Mada Dunaway Manor	41	36	5
Drumright Nursing Home	60	58	2
Duncan Assisted Living	19	18	1
Duncan Community Residence	1	1	0
EastOK Cottage 1	3	3	0
Eastgate Village Retirement Center	106	97	9
Eastwood Manor	97	92	5
Eden Care - The Greens	1	1	0
Edith Kassanavoid Gordon Assisted Living Center	5	5	0
Edmond Healthcare Center	54	43	11
Edna Lee's Residential Care	4	4	0
El Reno Post-Acute Rehabilitation Center	13	11	2
Elk City Nursing Center	63	55	8
Elk Crossing	55	39	7
Elkwood Assisted Living and Memory Care	25	22	3
Elmbrook Home	24	20	2
Elmwood Manor Nursing Home	27	27	0
Emerald Care Center Claremore	142	126	16
Emerald Care Center Midwest	73	66	7
Emerald Care Center Southwest LLC	61	59	2
Emerald Care Center Tulsa	42	35	7
Emerald Square Assisted Living Community	3	3	0

Facility	Cases	Recovered**	Deaths
English Village Manor	54	43	11
Enid Senior Care	18	15	3
Epworth Villa Health Services	52	37	2
Eufaula Manor Nursing and Rehabilitation Center	90	82	8
Fairfax Manor	34	29	5
Fairmont Skilled Nursing and Therapy	90	73	7
Fairview Fellowship Home for Senior Citizens, Inc	101	91	10
Family Care Center of Fairland	3	3	0
Family Care Center of Kingston	22	19	1
Faye's Place	7	7	0
Featherstone Assisted Living Community of Ada	5	5	0
Featherstone Assisted Living Community of Durant	6	6	0
Featherstone Assisted Living Community of Moore	38	33	5
Featherstone of Miami	11	11	0
First Shamrock Care Center	5	5	0
Forest Hills Care and Rehabilitation Center	35	29	6
Forrest Manor Nursing Center	53	49	4
Fort Gibson Nursing Home	22	18	4
Fountain View Manor, Inc	13	12	1
FountainBrook Assisted Living and Memory Support	12	12	0
Four Seasons Rehabilitation & Care	51	47	1
Franciscan Villa	138	113	23
Garland Road Nursing and Rehab Center	13	11	2

Facility	Cases	Recovered**	Deaths
Gatesway Foundation, Inc	9	9	0
Glade Avenue Assisted Living	9	7	0
Glade Avenue South	6	3	3
Glenhaven Retirement Village	78	69	8
Glenwood Healthcare	27	18	9
Go Ye Village Continuum of Care Retirement Community	10	5	5
Golden Age Nursing Home of Guthrie, LLC	90	70	19
Golden Oaks Village	55	43	11
Grace Living Center - Buffalo	1	0	1
Grace Living Center - Clinton	21	16	3
Grace Living Center - Jenks	42	32	9
Grace Living Center - Norman	96	76	17
Grace Living Center - Stillwater	16	15	1
Grace Living Center - Tahlequah East Shawnee	6	4	2
Gracewood Health and Rehab	45	37	8
Gran Grans Place	2	2	0
Grand Lake Villa	38	29	9
Grandwood Assisted Living, LC	48	42	6
Green Country Care Center	103	91	12
Green Country Village Assisted Living Center	7	7	0
Green Tree at Sand Springs	29	23	6
Greenbrier Nursing Home	53	49	3
Greenbrier Village Residential Living, LLC	15	15	0

Facility	Cases	Recovered**	Deaths
Gregston Nursing Home, Inc.	23	18	1
Grove Nursing Center	101	79	19
Harborchase of Oklahoma City	1	1	0
Harrah Nursing Center	50	42	6
Haskell Care Center	31	31	0
Haskell County Nursing Center, Inc	67	62	5
Hays House	38	38	0
Heartsworth Center for Nursing and Rehabilitation	54	50	3
Heartsworth House Assisted Living	3	3	0
Heatheridge Residential Care Center	22	16	6
Heavener Nursing & Rehab	56	48	8
Hennessey Nursing & Rehab	82	74	7
Henryetta Community Skilled Healthcare & Rehab	10	9	1
Hensley Nursing & Rehab	40	35	5
Heritage Assisted Living	12	12	0
Heritage Community	32	27	5
Heritage Grove at Tahlequah	4	4	0
Heritage Hills Living & Rehabilitation Center	69	66	3
Heritage Manor	30	29	1
Heritage Park	7	4	3
Heritage Point of Oklahoma City	2	2	0
Heritage Point of Tulsa	15	15	0
Heritage Skilled Nursing & Therapy	10	9	1

Facility	Cases	Recovered**	Deaths
Heritage Villa Nursing Center	23	19	4
Heritage Village Nursing Home	15	15	0
Heritage at Brandon Place Health and Rehabilitation	65	59	6
High Cedar Residential Care	1	1	0
Higher Call Nursing Center	40	33	7
Highland Park Health Care	11	10	1
Hill Nursing Home, Inc	18	15	1
Hillcrest Manor Nursing Center	8	3	5
Hillcrest Nursing Center	31	28	2
Hobart Nursing & Rehab	27	23	3
Holiday Heights Nursing Home	17	12	2
Home of Hope Elmwood House	1	1	0
Home of Hope Scrapper House	1	1	0
Homestead Residential Care	2	2	0
Homestead of Bethany, LLC	9	8	1
Homestead of Hugo	45	39	6
Homestead of Owasso	16	16	0
Ignite Medical Resort Norman, LLC	53	44	9
Ignite Medical Resort OKC	128	113	15
Iris Memory Care of Edmond	10	7	3
Jacquelyn House	2	2	0
Jan Frances Care Center	14	12	2
John H. Johnson Care Suites	11	11	0

Facility	Cases	Recovered**	Deaths
Kenwood Manor	22	21	1
Kingwood Skilled Nursing and Therapy	32	29	3
Lake Country Nursing Center	31	27	3
Lake Drive Care and Rehabilitation Center	46	46	0
Lakeland Manor, Inc	15	12	3
Lakeview Nursing & Rehab	26	24	2
Landmark of Midwest City Rehabilitation and Nursing	44	38	6
Lane Nursing & Ventilator Care	5	5	0
Latimer Nursing Home	27	23	4
Legacy Village of Stillwater	18	18	0
Legend at 71st St	16	13	3
Legend at Council Road	7	7	0
Legend at Mingo Road	4	4	0
Legend at Rivendell	61	48	13
Leisure Village Health Care Center	52	40	12
Lexington Nursing Home	18	15	2
Lexington Place	1	1	0
Liberty Place	2	2	0
Lindsay Nursing & Rehab	36	33	3
Linwood Village Nursing & Retirement Apts	16	16	0
Lyndale at Edmond	2	2	0
Magnolia Creek Skilled Nursing and Therapy	45	36	9
Mangum Skilled Nursing and Therapy	72	63	7

Facility	Cases	Recovered**	Deaths
Maple Lawn Nursing and Rehabilitation	21	17	4
Maplewood Care Center	38	33	5
Marlow Nursing & Rehab	17	16	1
Mattox Hall	1	1	0
McAlester Nursing & Rehab	53	49	4
McCall's Chapel School, Inc #11	2	2	0
McCall's Chapel School, Inc #13	1	1	0
McCall's Chapel School, Inc #4	1	1	0
McCall's Chapel School, Inc #7	1	1	0
McCall's Chapel School, Inc #8	1	1	0
McCall's Chapel School, Inc #9	1	1	0
McLoud Nursing Center	8	8	0
McMahon-Tomlinson Nursing Center	49	44	4
Meadow Brook Residential Care	29	29	0
Meadowbrook Nursing Center	42	39	3
Meadowlake Estates	85	68	17
Meadowlakes Retirement Village	4	3	1
Medical Park West Rehabilitation	10	8	2
Medicallodges Dewey	6	6	0
Meeker Nursing Center	51	36	15
Memorial Heights Nursing Center	37	30	7
Memorial Nursing Center	27	26	1
Memory Care Center at Emerald	15	14	1

Facility	Cases	Recovered**	Deaths
Meridian Nursing Home	18	17	1
Miami Nursing Center, LLC	91	84	7
Mid-Del Skilled Nursing and Therapy	28	26	2
Miller's Residential Care, LLC	2	2	0
Mitchell Manor	87	82	5
Monroe Manor	17	11	6
Montereau, Inc Assisted Living	28	23	5
Montereau, Inc LTC/SNF	32	31	1
Montevista Rehabilitation and Skilled Care	24	19	4
Mooreland Heritage Manor	26	24	2
Muscogee (Creek) Nation Skilled Nursing Facility	1	1	0
Muskogee Nursing Center	22	20	1
New Hope Retirement & Care Center	16	15	0
Noble Health Care Center	81	76	5
North County Assisted Living	6	5	1
North County Center for Nursing and Rehabilitation	38	34	4
North Winds Living Center	4	2	0
Northhaven Place	10	9	1
Northwest Nursing Center	3	3	0
Nowata Nursing Center	8	7	1
Oak Hills Living Center	20	19	1
Oakridge Home	14	12	2
Oakridge Nursing Center	74	66	7

Facility	Cases	Recovered**	Deaths
Okemah Care Center	30	28	2
Oklahoma Methodist Manor AL	9	4	1
Oklahoma Methodist Manor NH	37	34	3
Oklahoma Veterans Center, Ardmore Division	39	23	13
Oklahoma Veterans Center, Claremore Division	331	274	53
Oklahoma Veterans Center, Clinton Division	169	134	33
Oklahoma Veterans Center, Lawton-Ft. Sill Division	73	61	10
Oklahoma Veterans Center, Norman Division	104	73	27
Oklahoma Veterans Center, Sulfur Division	58	55	2
Oklahoma Veterans Center, Talihina Division	36	32	4
Okmulgee Terrace	5	5	0
Osage Nursing Home, LLC	35	33	1
Oxford Glen at Owasso	25	20	5
Parkhill North Nursing Home	25	23	2
Parkland Manor	1	1	0
Parkview Pointe Senior Living	1	1	0
Pauls Valley Care Center	3	3	0
Perry Green Valley Nursing Center, LLC	30	28	2
Pleasant Valley Health Care Center	83	78	4
Pocola Health & Rehab	64	60	4
Ponca City Nursing and Rehabilitation	71	62	8
Prairie House Assisted Living & Memory Care	9	6	3
Prairie Pointe at Stroud	11	11	0

Facility	Cases	Recovered**	Deaths
Primrose Retirement Community of Shawnee	14	14	0
Primrose Retirement Community of Stillwater	3	3	0
Providence House	9	9	0
Providence Place	3	3	0
Purcell Care Center, LLC	43	36	7
Quail Creek Senior Living	23	19	4
Quail Ridge Living Center, Inc (Colcord, OK)	39	36	2
Quail Ridge Senior Living	27	21	6
Quinton Manor Nursing Home	19	19	0
RT 66 Residential Care Home, LLC	7	7	0
Rainbow Health Care Community: Nursing Home	84	75	9
Rainbow Terrace Care Center	1	1	0
Rambling Oaks (Norman)	29	26	3
Rambling Oaks Courtyard Assisted Living & Memory Care	10	10	0
Ranch Terrace Nursing Home	23	20	3
Ranchwood Nursing Center	60	54	4
Reliant Living Center	22	21	1
Reliant Living Center of Del City	3	3	0
River Oaks Skilled Nursing	53	45	8
Riverside Health Services LLC	18	18	0
Robert M Greer Center	1	1	0
Rolling Hills Care Center	34	23	11
Ruth Wilson Hurley Manor	75	67	8

Facility	Cases	Recovered**	Deaths
Saint Simeons Episcopal Home	42	39	3
Sand Plum Assisted Living Community	14	13	1
Sand Springs Nursing and Rehabilitation	20	18	2
Seiling Nursing Center	7	5	2
Seminole Care and Rehabilitation Center	117	111	6
Seminole Pioneer Nursing Home	24	23	0
Seminole Place	2	2	0
Senior Star The Brook	3	3	0
Senior Suites Healthcare	19	16	3
Senior Village	12	10	2
Sequoyah East Nursing Center, LLC	17	16	1
Sequoyah Manor	56	45	11
Sequoyah Pointe Living Center	27	23	4
Shady Rest Care Center	35	32	3
Shanoan Springs Nursing and Rehabilitation	63	56	7
Share Medical Center	13	12	1
Shattuck Nursing Center	11	11	0
Shawn Manor Nursing Home	7	6	0
Shawnee Care Center	39	31	8
Shawnee Colonial Estates Nursing Home	75	65	10
Sherwood Manor Nursing Home	20	15	5
Shiloh Manor	14	14	0
Sienna Extended Care & Rehab	40	37	3

Facility	Cases	Recovered**	Deaths
Skiatook Nursing Home	47	41	6
Skyview Nursing Center	9	8	1
Sommerset Neighborhood	23	22	1
South Park East	47	42	4
South Pointe Rehabilitation and Care Center	214	184	28
Southbrook Healthcare, Inc.	38	31	6
Southern Hills Rehabilitation Center	94	81	12
Southern Oaks Care Center	56	45	11
Southern Plaza Assisted Living and Memory Care	30	28	2
Southern Pointe Living Center	49	41	8
Southridge Place	1	1	0
Spanish Cove Housing Authority	35	30	0
Spiro Nursing Home, Inc.	58	57	1
St. Ann's Skilled Nursing and Therapy	97	69	28
St. Katharine Drexel Retirement Center	10	10	0
Stilwell Nursing Home, LLC	34	26	8
Stonecreek Assisted Living and Memory Care	6	4	2
Storey Oaks	48	43	5
Stroud Health Care Center South	8	8	0
Summers Healthcare, LLC	30	29	1
Sunset Estates of Purcell	93	86	6
Superior Care Homes of Oklahoma, LLC	1	1	0
Talihina Manor	20	19	1

Facility	Cases	Recovered**	Deaths
Tamarack Retirement Center	19	17	2
Teal Creek Assisted Living & Memory Care	13	13	0
Tealridge Assisted Living	14	13	1
Temple Manor Nursing Home	47	40	7
Ten Oaks Place	12	8	4
The Arbors Assisted Living Center	11	10	1
The Brentwood Senior Living	22	20	2
The Chateau	10	8	2
The Commons	135	121	14
The Commons - AL	4	4	0
The Cottage Extended Care	32	24	8
The Courtyards at Claremore Assisted Living	7	5	2
The Courtyards at Magnolia Creek	9	9	0
The Fountains at Canterbury Health Center	37	31	6
The Gardens	23	16	4
The Gardens at Rivermont	4	4	0
The Golden Rule Home	58	55	3
The Grand at Bethany Skilled Nursing and Therapy	25	24	1
The Health Center at Concordia	38	35	3
The Health Center at Concordia ALC	9	9	0
The Heaven House Elmwood	1	1	0
The Highlands at Owasso	39	29	10
The King's Daughters & Sons Nursing Home	69	64	5

Facility	Cases	Recovered**	Deaths
The Lakes	13	11	1
The Legend at Jefferson's Garden	2	2	0
The Linden at Stonehaven Square	29	20	9
The Living Centre	36	29	7
The Lodge at Brookline	16	14	2
The Mansion at Waterford	23	18	4
The Neighborhoods at Baptist Village of Ada	9	8	0
The Neighborhoods at Baptist Village of Elk City	16	15	0
The Neighborhoods at Baptist Village of Okmulgee	1	1	0
The Nova Center	1	1	0
The Oaks Healthcare Center	32	30	2
The Parke Assisted Living	17	15	2
The Regency Skilled Nursing and Therapy	29	25	3
The Renaissance of Stillwater - Assisted Living	5	5	0
The Springs Skilled Nursing and Therapy	52	43	9
The Timbers Skilled Nursing and Therapy	72	60	12
The Veraden	12	12	0
The Villages at Southern Hills	91	66	20
The Willows	1	1	0
The Wilshire Skilled Nursing and Therapy	7	6	0
The Wolfe Living Center at Summit Ridge	18	17	1
Tidwell Living Center	2	1	0
Timberwood Assisted Living & Memory Care	1	1	0

Facility	Cases	Recovered**	Deaths
Touchmark at Coffee Creek	26	25	1
Town Village Assisted Living	2	2	0
Town of Vici Nursing Home	21	20	1
Tulsa Assisted Living and Memory Care	5	4	1
Tulsa Nursing Center	38	34	4
Tuscany Village Nursing Center	27	24	2
Tuttle Care Center	40	36	3
University Park Skilled Nursing & Therapy	67	61	6
University Village	87	72	15
Van Buren House Assisted Living	4	4	0
Via Christi Village Ponca City	106	100	6
Vian Nursing & Rehab, LLC	23	21	2
Victorian Estates	8	7	1
Village Health Care Center	24	14	2
Village Lodge of Ardmore Village	11	10	1
Village at Oakwood	8	7	1
Village on the Park	48	39	8
Villagio of Oklahoma City	1	0	1
Wagoner Health & Rehab	46	42	4
Wagoner Health & Rehab Res Care	12	12	0
Walnut Grove Living Center	70	57	13
Warr Acres Nursing Center	25	21	1
Washita Valley Living Center	37	34	3

Facility	Cases	Recovered**	Deaths
Weatherwood Assisted Living and Memory Care	11	11	0
Wellington Parke, LLC	5	5	0
West Wind Assisted Living	26	24	2
Westbrook Gardens	6	5	1
Westbrook Healthcare, Inc	19	17	2
Westhaven Nursing Home	90	79	4
Westview Cottages	36	36	0
Wewoka Healthcare Center	17	15	0
Whispering Oaks	3	3	0
Wildewood Skilled Nursing and Therapy	26	25	1
Wildwood Care Center, Inc	37	34	3
Wilkins Health and Rehabilitation Community	69	38	0
Willow Creek Health Care	20	15	5
Willow Haven Nursing Home	34	28	6
Willow Park Health Care Center	74	62	11
Willow Place	5	5	0
Willowood at Mustang Assisted Living and Memory Care	7	7	0
Wilson Nursing Center	48	40	8
Windridge Nursing and Rehabilitation Center	32	28	4
Windsor Hills Nursing Center	8	7	1
Woodland Park Home, Inc	6	5	1
Woodlands Skilled Nursing & Therapy	6	3	0
Woodview Home, Inc.	23	22	0

Facility	Cases	Recovered**	Deaths
Woodward Skilled Nursing and Therapy	39	35	4
York Manor Nursing Home	44	42	2
Zarrow Pointe	22	18	3
<i>Total</i>	<i>15,502</i>	<i>13,423</i>	<i>1,831</i>

** Recovered case: is not deceased and 14 days after symptom onset/specimen collection. Please note that the definition for recovered was changed starting May 4, 2021 due to incomplete data on hospitalizations which may result in an inaccurate estimation of the active cases.

ACKNOWLEDGEMENT

The weekly report is made by possible through the efforts of county and city public health and healthcare professionals.

NOTES

Every effort is made to ensure accuracy and the data is up-to-date for the time period reported.

DISCLAIMER

The purpose of publishing aggregated statistical COVID-19 data through the OSDH Dashboard, the Executive Order Report, and the Weekly Epidemiology and Surveillance Report is to support the needs of the general public in receiving important and necessary information regarding the state of the health and safety of the citizens of Oklahoma. These resources may be used only for statistical purposes and may not be used in any way that would determine the identity of any reported cases.