



Oklahoma Board of Corrections

REGULAR MEETING

January 24, 2024

Oklahoma Department of Corrections
Union City Community Corrections Center
Union City, Oklahoma

OKLAHOMA BOARD OF CORRECTIONS
REGULAR MEETING AGENDA
 UNION CITY COMMUNITY CORRECTIONS CENTER
 700 North Highway 81, Union City, OK 73090
 1:00 PM on January 24, 2024

ITEM	PRESENTER
1. Call to Order	T. Hastings Siegfried
A. Pledge of Allegiance	Chair
B. Roll Call	
2. Approval of Board of Corrections Regular Meeting Minutes	T. Hastings Siegfried
A. November 29, 2023*	Chair
3. Chairman's Update	T. Hastings Siegfried
	Chair
4. Director's Update	Steven Harpe
	Director
5. Facility Administrator Welcome	Scott Wallis
	Administrator
6. Unit Spotlight	Vu Duong
A. Fleet Management	Administrator of Fleet Management
7. Warden Appointments	Jim Farris
A. MACC Interim Warden Margaret Green*	Chief Administrator of the
B. LARC Interim Warden David Louthan*	Division of Institutions
C. DCCC Interim Warden Randy Harding*	
8. Agency Financial Update	Ashlee Clemmons
A. Monthly Budget Report	Chief Financial Officer
B. Annual Review of Cost of Incarceration*	
9. Inmate/Offender Population	Clint Castleberry
A. Population Analysis Report	Chief Administrator of Classification & Programs
10. Committee Reports – Standing Committees	Committee Chairs
A. Executive – Chair Hastings Siegfried, Vice-Chair Randy Chandler and Secretary Rhonda Bear	
B. Public Policy/Affairs/Criminal Justice Committee – Chair Erick Harris and Members Rhonda Bear, Alex Gerszewski and Hastings Siegfried	
C. Population/Security/Private Prison –Chair Hastings Siegfried and Members Alex Gerszewski, Stephan Moore and Daniel Snead	
D. Finance and Audit – Chair Randy Chandler and Members Joseph Brantley, Hastings Siegfried and Daryl Woodard	

11. New Business

T. Hastings Siegfried
Chair

12. Adjournment*

T. Hastings Siegfried
Chair

The next regular meeting of the Board of Corrections will be held at 1:00 PM on Wednesday, February 28, 2024, at Oklahoma Health Care Authority, 4345 N. Lincoln, Oklahoma City, OK.

**Board of Corrections Voting Item
Updated on 1/18/2024 12:04:57 PM*

OKLAHOMA BOARD OF CORRECTIONS
REGULAR MEETING MINUTES
November 29, 2023

1. Call to Order

Chairman Hastings Siegfried called the meeting of the Oklahoma Board of Corrections (BOC) to order at 1:02 p.m., on Wednesday, November 29, 2023, at ODOC Administration Complex, 3400 Martin Luther King Ave, Oklahoma City, OK 73111.

The meeting was preceded by advance notice of the date, time, and place, filed with the Oklahoma Secretary of State on Tuesday, November 29, 2022. An announcement was also given at least twenty-four (24) hours in advance by posting notice of the date, time, place, and agenda of the meeting at 10:00 a.m., on Tuesday, November 28, 2023, at the principal office of the Oklahoma Department of Corrections (ODOC), located at 3400 North Martin Luther King Avenue in Oklahoma City, Oklahoma 73111.

A. Pledge of Allegiance

Chairman Siegfried led the meeting attendees in reciting the pledge of allegiance to the United States Flag.

B. Roll Call

Chairman Siegfried asked the clerk to call roll:

Rhonda Bear	Present	Stephan Moore	Present
Joseph Brantley	Present	T. Hastings Siegfried	Present
Randy Chandler	Present	Daniel Snead	Present
Alex Gerszewski	Present	Daryl Woodard	Absent
Erick Harris	Present		

The roll reflected a quorum.

2. Approval of Board of Corrections Meeting Minutes

Chairman Siegfried requested approval of the meeting minutes as presented to members in the BOC packet for November 29, 2023.

A. October 25, 2023, Meeting Minutes

Motion: Mr. Snead made the motion to approve the minutes. Mr. Moore seconded the motion.

Rhonda Bear	Approved	Stephan Moore	Approved
Joseph Brantley	Approved	T. Hastings Siegfried	Approved
Randy Chandler	Approved	Daniel Snead	Approved
Alex Gerszewski	Approved	Daryl Woodard	Absent
Erick Harris	Approved		

The meeting minutes from October 25, 2023, were approved by majority vote.

3. Chairman's Update

Chairman Siegfried welcomed everyone to the Board of Corrections meeting.

4. Director's Update

Director Steven Harpe gave updates on a variety of topics including the administration staff move to the OHCA building, inmate survey progress and the staff survey going out to employees in January to get employee feedback.

5. Unit Spotlight

A. Human Services

Chief People Officer Sophie Preston highlighted to Human Services unit and discussed current initiatives to gain accurate time and leave reporting between the TCP and Workday systems, Calibration as it pertains to performance reviews and the entire agency working to eliminate unconscious bias during performance ratings.

6. Warden Appointments

A. EWCC Interim Warden Christe Sweat

Chief Administrator of the Community Sentencing James Rudek welcomed everyone and provided the biography of Interim Warden Christe Sweat and requested approval for her appointment to Warden at Eddie Warrior Correctional Center. A copy of the biography was included in the BOC packet for November 29, 2023.

Board members provided their support and words of encouragement.

Motion: Chairman Siegfried made a motion to approve the appointment of Christe Sweat to Warden of Eddie Warrior Correctional Center. Mr. Harris seconded the motion.

Rhonda Bear	Approved	Stephan Moore	Approved
Joseph Brantley	Approved	T. Hastings Siegfried	Approved
Randy Chandler	Approved	Daniel Snead	Approved
Alex Gerszewski	Approved	Daryl Woodard	Absent
Erick Harris	Approved		

The appointment of Christe Sweat as EWCC Warden was approved by a majority vote.

7. Agency Budget Update

A. Monthly Budget Report

Chief Financial Officer Ashlee Clemmons welcomed everyone and provided an update on the year-to-date financials as of October 31, 2023, including updates on payroll, operating and total expenditures.

8. Inmate/Offender Population Update

A. Inmate/Offender Population Monthly Report

Chief Administrator of Classification & Programs Clint Castleberry provided an overview of the inmate/offender population report as of October 31, 2023. A copy of the overview was included in the BOC packet for November 29, 2023.

B. Bed Capacity Adjustments

Chief Administrator of Classification & Programs Clint Castleberry reviewed and

requested approval of the bed capacity adjustments included in the BOC packet for November 29, 2023.

Motion: Chairman Siegfried made a motion to approve the bed capacity adjustments. Mr. Snead seconded the motion.

Rhonda Bear	Approved	Stephan Moore	Approved
Joseph Brantley	Approved	T. Hastings Siegfried	Approved
Randy Chandler	Approved	Daniel Snead	Approved
Alex Gerszewski	Approved	Daryl Woodard	Absent
Erick Harris	Approved		

The bed capacity adjustments were approved by a majority vote.

9. Committee Reports – Standing Committees:

A. Executive

Chairman Hastings Siegfried

Members Randy Chandler and Rhonda Bear

Members in this committee discussed the proposed BOC agenda and current litigation.

B. Public Policy/Affairs/Criminal Justice

Chairman Erick Harris

Members Rhonda Bear, Alex Gerszewski and Hastings Siegfried

Members in this committee discussed the Legislative initiative processes, Public Relations initiatives and Reentry programs including Birth Certificate and ID disbursements.

C. Population/Security/Private Prisons

Chairman Hastings Siegfried

Members Daniel Snead, Alex Gerszewski and Stephan Moore

Members in this meeting discussed population, Oklahoma Inspector General statistical updates, Office of Threats and Intelligence updates, Private Prisons security updates and ICON offender management system updates.

10. New Business

There was no new business.

11. Adjournment

Motion: Mr. Harris made a motion to adjourn the meeting. Mr. Gerszewski seconded the

motion.

Rhonda Bear	Approved	Stephan Moore	Approved
Joseph Brantley	Approved	T. Hastings Siegfried	Approved
Randy Chandler	Approved	Daniel Snead	Approved
Alex Gerszewski	Approved	Daryl Woodard	Absent
Erick Harris	Approved		

There being no further business to discuss, the adjournment of the meeting was approved by a majority vote at 2:10 p.m.

Submitted to the Board of Corrections By:

Toni Lee, Minutes Clerk

Date

I hereby certify that these minutes were duly approved by the Board of Corrections on November 29, 2023, in which a quorum was present and voting.



Rhonda Bear, Secretary
Board of Corrections

Fleet Management Overview

Fleet Management is the centralized unit that oversees all vehicles owned or leased by the Oklahoma Department of Corrections (ODOC). Charged with developing the annual fleet budget, Fleet Management manages the acquisition of additional agency vehicles; the tracking usage, repair history, and assignment of facility and departmental fleets through Assetworks/M5; install Automatic Vehicle Locators (AVLs) on identified vehicles and assist in monitoring usage through Geotab per Governor's Executive Order 2020-04; and the disposal of aging, high-mileage, and/or total loss vehicles. Fleet Management also provides oversight for service, maintenance, and fleet performance. Additionally, Fleet Management maintains 12 facility garages that provide services to ODOC vehicles through preventative maintenance, mechanical repairs, monthly and annual vehicle inspections, detailing, and light body work-saving the agency money in labor costs. ODOC currently owns 800 vehicles. In addition to managing vehicles, all facility emergency generators are inspected and serviced by Fleet Management annually.

Staffing

Fleet Management currently employs nine Fleet Specialist IVs, four Fleet Specialist Vs, and two Fleet Managers with unit support coming from an Administrative Specialist. On average, Fleet Specialists have 20 years of automotive repair experience. Seven Fleet Specialists have current or previous certifications through the National Institute for Automotive Service Excellence (ASE) with two obtaining the designation of ASE Master Automobile Technician. Seven Fleet Specialists hold Vo-Tech certifications or Associates Degrees in Automotive Technology along with manufacturer specific certifications. The Fleet Managers average 16 years' experience in Fleet Management, with one holding certification through the U.S. General Services Administration Fleet Management training program.

Fleet Management garages are located at:

- Oklahoma State Reformatory

- Bill Johnson Correctional Center
- James Crabtree Correctional Center
- ODOC Administration
- Lexington Assessment & Receiving Center/Central Transportation Unit
- Joseph Harp Correctional Center
- Mabel Bassett Correctional Center
- John Lilley Correctional Center
- Jess Dunn Correctional Center
- Jackie Brannon Correctional Center
- Howard McLeod Correctional Center
- Mack Alford Correctional Center

All garages receive assistance from inmate workers. Some inmate workers hold automotive certifications or degrees while others receive on-the-job training via Fleet Specialists. All work performed by inmate workers is checked by a Fleet Specialist prior to the vehicle leaving the garage.

Current Initiatives

Currently, Fleet Management is working on enhancing an agencywide shared fleet pool pursuant to the Governor's initiative to ensure proper utilization of all state-owned vehicles. The OMES Business Process Operations department is working with Fleet Management to develop a system that meets the needs of ODOC while providing a monetary savings to the agency.

A paperless version of the Monthly Inspection and Annual Inspection are being developed with OMES Fleet Management's assistance. Once launched, these inspections will be automatically logged in M5. Printing, completing, and scanning a paper sheet for each vehicle will no longer be necessary.

MetroTech, ODOC Division of Institutions, ODOC Programs Services, and Fleet Management are currently installing the automotive shop at James Crabtree

Correctional Center. Vehicles that had major repairs can be done in-house while inmates learn a valuable skill set that can benefit them after their release.

Replacement vehicles

- **44 vehicles P&P- received 23**
- **5 vehicles IG- received 4**
- **7 buses CTU- received 2**
- **96 agency-wide- received 26**



Margaret Green

Margaret Green began her career with the Oklahoma Department of Corrections in June 1997 as a postal clerk at the Oklahoma State Penitentiary. Mrs. Green then became a correctional officer at OSP in June 1999. While at OSP, Mrs. Green also held the positions of case manager, procedures officer, and unit manager. Mrs. Green also worked with the Oklahoma Pardon and Parole Board as an investigator. Mrs. Green was promoted to Deputy Warden at Jackie Brannon Correctional Center in August 2021.

Mrs. Green earned her Bachelor of Science degree in Criminal Justice in May 1998 from East Central University.



David Louthan

David Louthan began his career at Bill Johnson Correctional Center as a Correctional Officer in June of 1996. Mr. Louthan promoted through the security ranks to Chief of Security in August of 2014. Mr. Louthan promoted to Deputy Warden at James Crabtree Correctional Center in November of 2016 and transferred to Bill Johnson Correctional Center as Deputy Warden in May of 2017. Mr. Louthan became the Warden at Mack Alford Correctional Center in July of 2021.

Mr. Louthan graduated from Northwestern Oklahoma State University where he received his Bachelor of Science degree in Criminal Justice.



RANDY HARDING

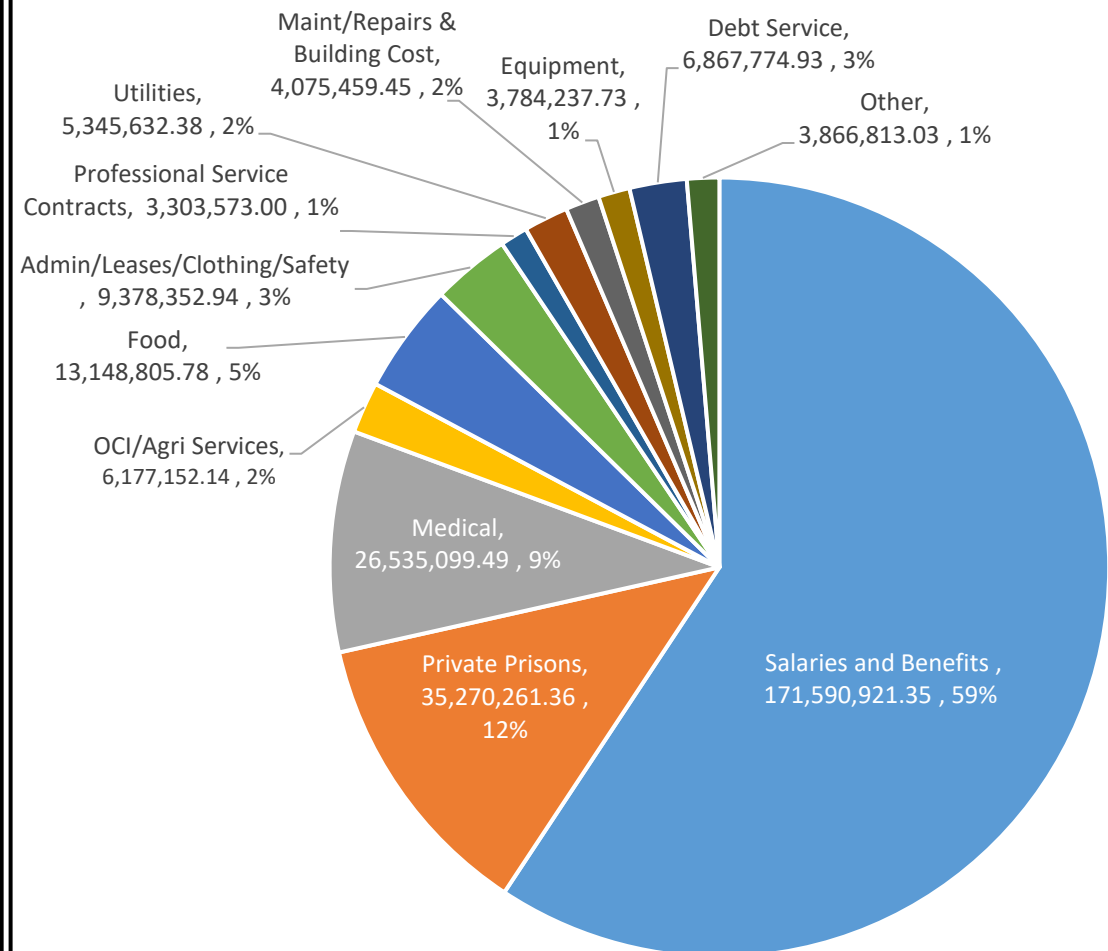
Randy began his career with the Oklahoma Department of Corrections in January of 1994 as a correctional officer at James Crabtree Correctional Center. Randy promoted to a correctional counselor at Bill Johnson Correctional Center in January 1995, and to a case manager in April 1995. Randy promoted to unit manager at William S. Key Correctional Center in 2012 and transferred back to BJCC in 2013 as a unit manager. In 2015, Randy promoted to Deputy Warden at Dick Connor Correctional Center. In July 2021 Randy promoted to Warden at Jim E Hamilton Correctional Center.

Randy earned his bachelor's degree in social work in December 1994 from Northwestern Oklahoma State University.

BUDGET TO ACTUALS

Department	Budget	Payroll Expenditures	Operating Expenditures	Total Expenditures	Available Budget Balance	% of Budget Remaining
Institutions	240,820,840	81,848,765	26,264,285	108,113,051	132,707,789	55%
Probation & Parole	35,454,841	16,105,995	712,470	16,818,464	18,636,377	53%
Community Corrections	21,385,311	8,098,268	1,545,973	9,644,240	11,741,071	55%
Inmate Programs – GPS	25,063,247	8,726,962	1,141,103	9,868,065	15,195,182	61%
Community Sentencing	3,501,159	532,884	518,253	1,051,137	2,450,022	70%
Contracted Services	74,922,641	501,061	35,270,261	35,771,323	39,151,318	52%
General Operations	27,346,553	1,171,412	10,206,600	11,378,013	15,968,540	58%
Central Office Operations	48,672,378	20,835,560	1,052,743	21,888,303	26,784,075	55%
Divisional Operations	30,121,808	5,623,430	2,414,015	8,037,445	22,084,363	73%
Health Services	109,345,092	23,679,278	26,535,099	50,214,377	59,130,715	54%
Information Technology	22,237,448		5,994,620	5,994,620	16,242,828	73%
Prison Industries	31,940,150	4,467,306	6,097,740	10,565,045	21,375,105	67%
TOTAL	670,811,468	171,590,921	117,753,162	289,344,084	381,467,384	

EXPENDITURES



Funding Source	Budget	Expenditure	Enc. / Pre-Enc.	Remaining Payroll	Available Budget Balance	Forecast Fund Balance
Appropriation (Includes FY23 C/O \$46.8M)	599,491,697	273,168,308	117,422,450	188,864,124	20,036,814	4,869,546
Federal Funds	2,838,119	492,928	1,026,021	199,928	1,119,241	
Revolving Funds	68,481,652	15,682,847	26,713,677	5,990,029	20,095,099	

Net Position	
Payroll	11,085,583
Medical	(4,608,900)
Contract Beds	
Private Prisons	(276,197)
Halfway Houses	382,668
Jail Backup	(1,713,608)
Grand Total	4,869,546

STAFFING LEVELS

	Budget	October	November	December
Correctional Officers	1,533	1,370	1,331	1,303
Probation Officers	313	241	239	238
Medical	439	403	406	403
Other	1,854	1,735	1,727	1,732
Total Staff	4,140	3,749	3,705	3,675

STAFFING UPDATES

(in comparison to previous month)

CO's ↓ 28 / 2.1%

PO's ↓ 1 / 0.4%

Medical ↓ 4 / 0.9%

Other ↑ 6 / 0.3%



BUDGET UPDATE

as of December 31, 2023

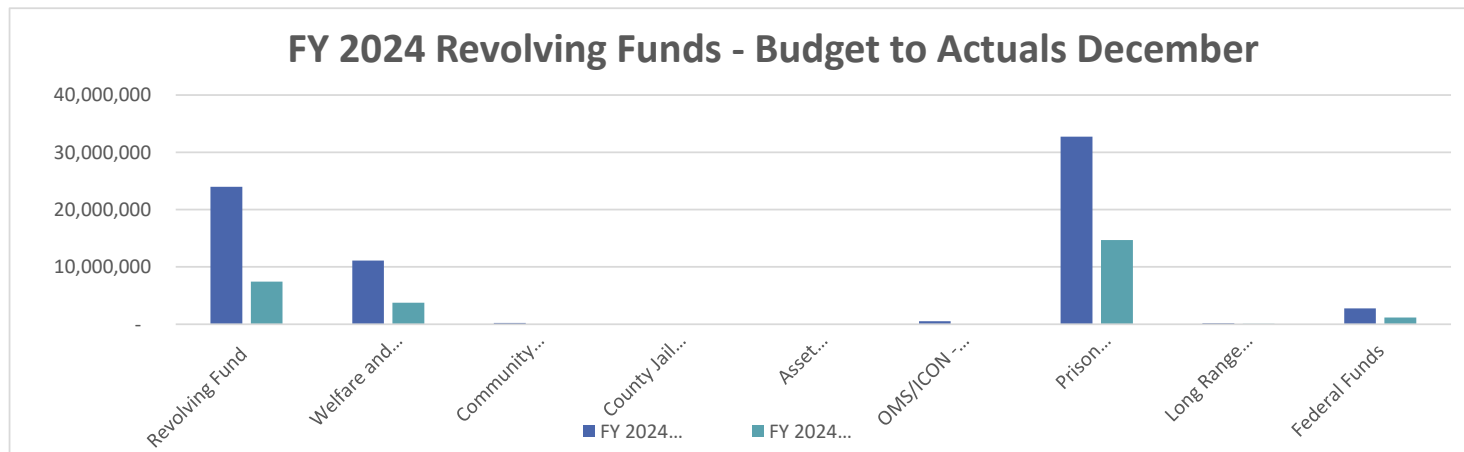
* Staffing numbers do not include AGCC acquired staff (102 CO's, 25 Medical, 64 Other, 191 total staff addition)

Three Year Expenditure Comparison

	FY 24 <u>July - December</u>	% Change from <u>FY 23</u>	FY 23 <u>July - December</u>	% Change from <u>FY 22</u>	FY 22 <u>July - December</u>
Salaries and Benefits					
Salaries	105,270,428	8%	97,875,522	14%	86,078,874
Overtime	18,352,576	38%	13,319,964	42%	9,351,793
Insurance	22,390,509	4%	21,432,955	-7%	23,166,558
Retirement	25,577,408	5%	24,256,674	14%	21,227,459
Contract Beds	17,131	-23%	22,261	14%	19,467
Private Prisons	30,778,497	-4%	32,102,652	1%	31,738,295
Halfway Houses	583,455	2%	571,973	-43%	1,008,185
Contracted County Jails	-	0%	-	-100%	10,719
Jail Backup	3,773,196	16%	3,253,770	41%	2,301,723
Jail Backup Transportation Reim	117,983	25%	94,133	17%	80,589
Medical Services	21,367,271	7%	20,055,466	12%	17,853,396
Hep C Treatment	5,167,829	135%	2,197,877	-45%	3,971,811
Institutions	26,264,285	78%	14,739,298	29%	11,407,475
Probation and Parole	712,470	-4%	739,194	-6%	789,978
Community Corrections	1,545,973	25%	1,238,246	32%	940,411
Inmate Programs	1,141,103	-20%	1,420,573	22%	1,161,846
Community Sentencing	518,253	-22%	660,266	-15%	773,628
General Operations	10,206,600	18%	8,656,462	8%	8,004,154
NFCC Lease - GPCC Moved to Inst		-100%	6,108,000	-14%	7,126,000
Central Office Operations	1,052,743	51%	695,821	14%	611,273
Divisional Operations	2,414,015	-66%	7,167,457	11%	6,444,270
IT	4,814,679	61%	2,981,494	-22%	3,844,744
Offender Management System	1,179,941	-38%	1,888,072	36%	1,390,816
OCI / Agri-Services	6,097,740	-8%	6,662,013	22%	5,472,202
	<u>289,344,084</u>		<u>268,140,141</u>		<u>244,775,666</u>

Three Year Revolving Fund Comparison

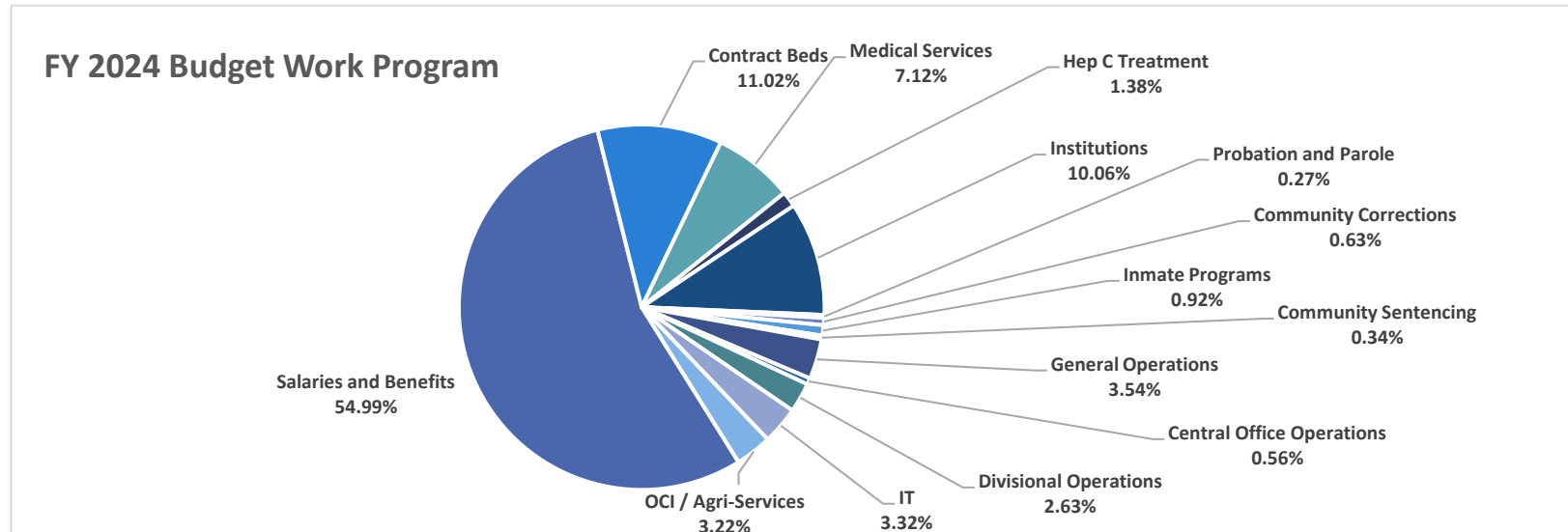
	FY 2024 Budget	FY 2024 Actuals July - December	% Change from FY 23	FY 2023 Actuals July - December	% Change from FY 22	FY 2022 Actuals July - December
200 Revolving Fund	23,968,332	7,436,945	-9%	8,216,332	52%	5,412,211
205 Welfare and Rec. Fund	11,093,730	3,774,022	0%	3,791,855	15%	3,302,545
210 Community Sentencing	230,000	51,207	31%	39,032	-11%	43,991
225 County Jail Transportation	40,727	-	0%	-	0%	-
230 Asset Forfeitures/Seizures Fund	-	11,915	100%	-	0%	-
235 OMS/ICON - Transfer of Funds	551,242	-	0%	-	0%	4,617,630
280 Prison Industries	32,712,863	14,705,409	28%	11,467,717	-7%	12,323,104
283 Long Range Capital Planning	207,154	79,803	100%	-	0%	-
410 & 430 Federal Funds	2,783,346	1,200,481	40%	859,167	-41%	1,450,831
	71,587,394	27,259,782	11.8%	24,374,103	-10.2%	27,150,312



FY 2024 Budget Work Program

	<u>Current Budget</u>	<u>Expenditures</u>	<u>Encumbrances</u>	<u>Available Balance</u>
Salaries and Benefits	368,911,023	171,590,921	1,009,965	196,310,137
Contract Beds	73,929,769	35,270,261	38,040,154	619,354
Medical Services	47,776,160	21,367,271	19,079,148	7,329,742
Hep C Treatment	9,240,000	5,167,829	2,797,136	1,275,035
Institutions	67,458,781	26,264,285	36,885,447	4,309,049
Probation and Parole	1,810,887	712,470	913,982	184,436
Community Corrections	4,244,025	1,545,973	2,422,692	275,361
Inmate Programs	6,169,060	1,141,103	3,361,562	1,666,395
Community Sentencing	2,280,750	518,253	1,101,678	660,819
General Operations	23,744,649	10,206,600	8,153,091	5,384,958
Central Office Operations	3,750,400	1,052,743	1,316,810	1,380,847
Divisional Operations	17,640,359	2,414,015	7,023,965	8,202,379
IT	22,237,448	5,994,620	10,826,831	5,415,997
OCI / Agri-Services	21,618,157	6,097,740	10,707,969	4,812,448
Grand Total	<u>670,811,468</u>	<u>289,344,084</u>	<u>143,640,429</u>	<u>237,826,955</u>

FY 2024 Budget Work Programs includes all funding sources.



Oklahoma Department of Corrections
 FY 2024 Appropriation as of December 31, 2023

Account Code	Budgeted	Expenditures	Encumbered	Pre-Encumbered	Committed	Balance
11,12,13 Payroll, Insurance, FICA and Retirement	358,151,446.00	167,021,158.79	1,009,964.51	-	168,031,123.30	190,120,322.70
15 Professional Services	81,787,571.00	39,465,084.53	40,301,804.52	-	79,766,889.05	2,020,681.95
17 Moving Expenses	-	23,376.00	101,624.00	-	125,000.00	(125,000.00)
19 Flexible Benefits	350,000.00	117,495.05	217,504.95	-	335,000.00	15,000.00
21, 22 Travel	1,231,552.00	697,336.40	158,464.95	-	855,801.35	375,750.65
31 Miscellaneous Administrative Expenses	20,235,922.00	9,454,144.62	10,815,456.22	-	20,269,600.84	(33,678.84)
32 Rent Expense	20,636,125.00	5,973,536.87	10,213,891.26	75,547.60	16,262,975.73	4,373,149.27
33 Maintenance & Repair Expense	9,133,705.00	3,364,853.84	2,787,375.67	32,008.00	6,184,237.51	2,949,467.49
34 Specialized Supplies and Materials	54,240,322.00	25,714,330.08	25,261,332.79	-	50,975,662.87	3,264,659.13
35 Production, Safety and Security	2,722,192.00	785,305.85	1,369,719.41	-	2,155,025.26	567,166.74
36 General Operating Expenses	669,152.00	245,908.87	115,001.38	-	360,910.25	308,241.75
37 Shop Supplies	2,529,189.00	983,301.66	864,679.73	-	1,847,981.39	681,207.61
41 Property Furniture and Equipment	18,976,208.00	3,502,938.73	7,453,781.78	-	10,956,720.51	8,019,487.49
42 Library Equipment and Resources	3,400.00	-	-	-	-	3,400.00
43 Lease Purchase	176,862.00	102,827.50	74,033.61	-	176,861.11	0.89
44 Live Stock – Poultry	-	-	5,000.00	-	5,000.00	(5,000.00)
45,46,47 Building Construction and Renovation	-	-	2,051.00	-	2,051.00	(2,051.00)
48 Bond Payment	10,450,040.00	6,764,947.43	3,912,746.27	-	10,677,693.70	(227,653.70)
49 Inter-Agency Payments	-	-	-	-	-	-
51 Inmate Pay and Health Services	750,000.00	297,980.21	427,119.81	-	725,100.02	24,899.98
52 Scholarships, Tuition and other incentives	2,500.00	-	-	-	-	2,500.00
53 Refunds, Indemnities, and Restitution	-	-	-	-	-	-
54 Jail Back Up and others	6,328,142.00	3,895,269.82	2,716,684.28	-	6,611,954.10	(283,812.10)
55,59 Assistance Payments to Agencies	-	-	-	-	-	-
60 Authority Orders	-	-	6,260,947.91	-	6,260,947.91	(6,260,947.91)
61 Loans, Taxes, and other Disbursements	2,270.00	1,645.39	929.64	-	2,575.03	(305.03)
62 Transfers – Inmate Medical Payments	11,115,099.00	4,756,866.80	3,244,781.20	-	8,001,648.00	3,113,451.00
64 Merchandise for Resale	-	-	-	-	-	-
TOTAL	599,491,697.00	273,168,308.44	117,314,894.89	107,555.60	390,590,758.93	208,900,938.07
Funding						
19311 FY 2023 Carryover	46,884,757.01	20,944,451.72	14,943,767.94	-	35,888,219.66	10,996,537.35
19401 GRF Appropriations	552,606,940.00	252,223,856.72	102,371,126.95	107,555.60	354,702,539.27	197,904,400.73
TOTAL	599,491,697.01	273,168,308.44	117,314,894.89	107,555.60	390,590,758.93	208,900,938.08
					Remaining Payroll	190,120,322.70
						18,780,615.38

Oklahoma Department of Corrections
Statement of Revenues, Expenditures and Changes in Fund Balances
Federal Funding
As of July 1, 2023 through December 31, 2023

Revenue Code	Revenues	410 Fund	430 Fund	Funds
4556	Federal Funds Received	\$ 513,451.55	\$ 682,939.84	\$ 1,196,391.39
4561	Private Grants and Donations for Opns.	-	-	-
4881	Reimbursements & P-Card Rebate	2,855.96	1,233.93	4,089.89
	<i>Total Revenues</i>	516,307.51	684,173.77	1,200,481.28
Account Code	Expenditures			
11,12,13	Payroll	165,883.38	34,073.00	199,956.38
15	Professional Services	-	94,635.20	94,635.20
21, 22	Travel	3,910.00	2,868.90	6,778.90
31	Misc. Admin. Expenses	4,485.00	-	4,485.00
32	Rent	10,687.93	-	10,687.93
33	Maintenance and Repair	8,245.05	36,828.75	45,073.80
34	Specialized Supplies and Materials	-	103,272.60	103,272.60
35	Production, Safety and Security	-	-	-
36	General Operating Expenses	119,638.72	-	119,638.72
37	Shop Expense	-	-	-
41	Furniture and Equipment	149,877.88	120,696.59	270,574.47
42	Library Equipment and Resources	-	-	-
43	Lease Purchases	-	-	-
44	Livestock and Poultry	-	-	-
45	Land and Right-of-way	-	-	-
46	Building, Construction and Renovation	-	-	-
48	Debt Service	-	-	-
51	Inmate Pay and Health Services	-	-	-
52	Tuitions, Awards and Incentives	-	-	-
53	Refunds and Restitutions	-	-	-
54	Jail Backup, County Jails and Other	-	-	-
55	Payment to Gov. Sub-Division	-	-	-
59	Assistance Payments to Agencies	-	-	-
61	Loans, Taxes and Other Disbursements	-	-	-
62	Transfers - Out Sourced Health Care	-	-	-
64	Merchandise for Resale	-	-	-
	<i>Total Expenditures</i>	462,727.96	392,375.04	855,103.00
	<i>Excess of Revenues Over</i>			
	<i>(Under) Expenditures</i>	53,579.55	291,798.73	345,378.28
	Cash			
	Beginning Cash Balance	90,965.43	155,077.73	246,043.16
	Revenue Received this Year	516,307.51	684,173.77	1,200,481.28
	Expenditures made this Year	(462,727.96)	(392,375.04)	(855,103.00)
	Beginning Change in Liabilities	-	(46,840.83)	(46,840.83)
	Transfers	-	-	-
	Adjustments	-	-	-
	Ending Cash Balance	\$ 144,544.98	\$ 400,035.63	\$ 544,580.61

Oklahoma Department of Corrections
Statement of Revenues, Expenditures and Changes in Fund Balances
Federal Funding
For the Month of December 2023

Revenue	410 Fund	430 Fund	Funds
Revenues			
Code Current:			
456 Private Grants and Donations for Opns.	\$ -	\$ -	\$ -
561 Federal Funds Rec'd from Non-Gov. Ag.	-	113,090.77	113,090.77
581 Reimbursements	-	-	-
<i>Total Revenues</i>	<u>-</u>	<u>113,090.77</u>	<u>113,090.77</u>
Account Expenditures			
Code Current:			
11,12,13 Payroll	22,857.47	4,098.86	26,956.33
15 Professional Services	-	36,467.27	36,467.27
21, 22 Travel	2,880.00	-	2,880.00
31 Misc. Admin. Expenses	-	-	-
32 Rent	1,359.77	-	1,359.77
33 Maintenance and Repair	1,053.59	-	1,053.59
34 Specialized Supplies and Materials	-	31,470.49	31,470.49
35 Production, Safety and Security	-	-	-
36 General Operating Expenses	27,199.81	-	27,199.81
37 Shop Expense	-	-	-
41 Furniture and Equipment	571.00	500.00	1,071.00
42 Library Equipment and Resources	-	-	-
43 Lease Purchases	-	-	-
44 Livestock and Poultry	-	-	-
45 Land and Right-of-way	-	-	-
46 Building, Construction and Renovation	-	-	-
48 Debt Service	-	-	-
51 Inmate Pay and Health Services	-	-	-
52 Tuitions, Awards and Incentives	-	-	-
53 Refunds and Restitutions	-	-	-
54 Jail Backup, County Jails and Other	-	-	-
55 Payment to Gov. Sub-Division	-	-	-
59 Assistance Payments to Agencies	-	-	-
61 Loans, Taxes and Other Disbursements	-	-	-
62 Transfers - Out Sourced Health Care	-	-	-
64 Merchandise for Resale	-	-	-
<i>Total Expenditures</i>	<u>55,921.64</u>	<u>72,536.62</u>	<u>128,458.26</u>
<i>Excess of Revenues Over (Under) Expenditures</i>	<u>(55,921.64)</u>	<u>40,554.15</u>	<u>(15,367.49)</u>
Cash			
Beginning Cash Balance	200,466.62	359,481.48	559,948.10
Revenue Received this Month	-	113,090.77	113,090.77
Expenditures made this Month	(55,921.64)	(72,536.62)	(128,458.26)
Change in Liabilities	-	-	-
Transfers	-	-	-
Adjustments	-	-	-
<i>Ending Cash Balance</i>	<u>\$ 144,544.98</u>	<u>\$ 400,035.63</u>	<u>\$ 544,580.61</u>

Oklahoma Department of Corrections
Statement of Revenues, Expenditures and Changes in Fund Balances
 Non- Appropriated Funds
 As of July 1, 2023 through December 31, 2023

	200 Fund	205 Fund	210 Fund	225 Fund	230 Fund	235 Fund	280 Fund	283 Fund	Funds
Revenues									
Current:									
Disbursement Fees	\$ 4,618.65	\$ -	\$ -	\$ -	\$ -	\$ -	\$ -	\$ -	\$ 4,618.65
Sale of Contraband	15,489.25	-	-	-	-	-	-	-	15,489.25
Bank Charge Back / Returned Check Fee	-	-	-	-	-	-	-	-	-
Other Fines, Forfeits, Penalties (Admin. Fees, Inst. Debts)	60,733.85	-	51,207.00	-	-	-	-	-	111,940.85
Interest on Investments	218,853.49	11,467.13	-	-	-	-	93,373.89	-	323,694.51
Rent from Land & Buildings	14,798.49	-	-	-	-	-	-	-	14,798.49
Insurance and Other Reimbursement for Damages	105,062.48	-	-	-	-	-	-	-	105,062.48
Reimbursement for Administrative Expense (PPWP)	71,512.46	-	-	-	-	-	-	-	71,512.46
Reimbursement of Data Processing Fees	-	-	-	-	-	-	-	-	-
Reimbursement for Travel Expense	-	-	-	-	-	-	-	-	-
Federal Reimbursements	1,064,684.75	-	-	-	-	-	-	-	1,064,684.75
Federal Funds Rec'd from Non-Gov. Ag.	33,926.16	-	-	-	-	-	-	-	33,926.16
Refunded Money Previously Disbursed - Goods & Services	505,261.79	-	-	-	-	-	-	-	505,261.79
Reimbursement for Funds Expended (Refunds - Payroll Reim.)	55,135.64	-	-	-	-	-	-	-	55,135.64
Pharmaceuticals Rebate	-	-	-	-	-	-	-	-	-
Program Income (Dog Programs)	270.00	-	-	-	-	-	-	-	270.00
Other Grants, Refunds and Reimbursements (P-card Rebate)	271,306.10	-	-	-	-	-	28,926.85	-	300,232.95
Farm Products General	-	-	-	-	-	-	6,593,484.28	-	6,593,484.28
Charge for Service - (Water Treatment Plant)	19,250.00	-	-	-	-	-	-	-	19,250.00
Laboratory and Medical Services	76,667.39	-	-	-	-	-	-	-	76,667.39
Sale of Documents (Copies)	18,577.22	-	-	-	-	-	-	-	18,577.22
Food & Beverage Sales	18,720.75	-	-	-	-	-	-	-	18,720.75
Canteen and Concession Income	-	3,762,554.55	-	-	-	-	-	-	3,762,554.55
Sale of Merchandise	-	-	-	-	-	-	7,955,564.05	-	7,955,564.05
Registration Fees	-	-	-	-	-	-	-	-	-
Paper & Other Recyclable Materials	-	-	-	-	-	-	-	-	-
Notification of Confinement - Social Security Admin	49,800.00	-	-	-	-	-	-	-	49,800.00
Contributions - Patients & Inmates	2,662.16	-	-	-	-	-	-	-	2,662.16
Probation & Parole Fees, DNA Fees, GPS Fees, Restitution Fees	1,548,032.33	-	-	-	-	-	-	-	1,548,032.33
Asset Forfeiture - Federal Judgements	-	-	-	-	11,915.22	-	-	-	11,915.22
Deposits by Patients and Offenders (Program Fees - Work Release)	3,192,207.82	-	-	-	-	-	34,059.92	-	3,226,267.74
Sale of Salvage	89,374.03	-	-	-	-	-	-	-	89,374.03
Sale of Land and/or Land Improvements	-	-	-	-	-	-	-	-	-
Funds Transferred from LRCPC	-	-	-	-	-	-	-	79,803.20	79,803.20
Total Revenues	7,436,944.81	3,774,021.68	51,207.00	-	11,915.22	-	14,705,408.99	79,803.20	26,059,300.90
Expenditures									
Current:									
Payroll	40,770.30	-	-	-	-	-	4,393,323.15	-	4,434,093.45
Professional Services	2,326,554.60	834,634.08	61,930.93	-	-	101,382.50	158,909.79	44,250.00	3,527,661.90
Travel	27,386.60	7,247.07	9,112.85	-	-	-	30,597.18	-	74,343.70
Misc. Admin. Expenses	19,580.58	285,943.66	90.00	-	-	-	345,658.94	-	651,273.18
Rent	16,711.74	49,955.31	-	-	-	-	3,879.06	-	138,751.00
Maintenance and Repair	659,897.72	207,717.03	-	-	-	-	546,517.10	-	1,414,131.85
Specialized Supplies and Materials	119,581.67	385,331.43	327.17	-	-	-	275,681.15	-	780,921.42
Production, Safety and Security	511,630.42	29,783.23	603.00	-	-	-	170,100.17	-	712,116.82
General Operating Expenses	3,168.31	116,380.81	477.00	-	-	-	23,790.96	-	143,817.08
Shop Expense	95,533.79	35,254.45	2,570.50	-	-	-	483,625.26	-	616,984.00
Furniture and Equipment	157,676.51	254,909.96	-	-	-	-	2,073,479.14	-	2,525,128.02
Library Equipment and Resources	-	-	-	-	-	-	-	-	-
Lease Purchases	-	-	-	-	-	-	-	-	-
Livestock and Poultry	-	-	-	-	-	-	-	-	-
Land and Right-of-way	-	-	-	-	-	-	-	-	-
Building, Construction and Renovation	1,440.00	-	-	-	-	-	36,830.00	-	38,270.00
Debt Service	-	-	-	-	-	-	-	-	-
Inmate Pay and Health Services	9,897.39	1,376,967.55	-	-	-	-	448,552.83	-	1,835,417.77
Tuitions, Awards and Incentives	-	-	-	-	-	-	-	-	-
Refunds and Restitutions	-	-	-	-	-	-	-	-	-
Jail Backup, County Jails and Other	2,156,053.20	-	-	49,867.01	-	-	-	-	2,205,920.21
Payment to Gov. Sub-Division	-	-	-	-	-	-	-	-	-
Assistance Payments to Agencies	-	-	-	-	-	-	-	-	-
Loans, Taxes and other Disbursements	55.79	-	-	-	-	-	-	-	55.79
Transfers - Out Sourced Health Care	1,029,306.36	-	-	-	-	-	-	-	1,029,306.36
Merchandise for Resale	1,507.23	-	-	-	-	-	5,295,246.51	-	5,296,753.74
Total Expenditures	7,176,752.21	3,584,124.58	75,111.45	49,867.01	-	2,178,740.70	12,316,100.34	44,250.00	25,424,946.29
Excess of Revenues Over (Under) Expenditures	260,192.60	189,897.10	(23,904.45)	(49,867.01)	11,915.22	(2,178,740.70)	2,389,308.65	35,553.20	634,354.61
Cash									
Beginning Cash Balance	16,920,789.85	873,902.57	1,161,140.34	72,451.36	-	2,558,052.41	6,859,810.75	184,000.00	28,630,147.28
Revenue Received this Year	7,436,944.81	3,774,021.68	51,207.00	-	11,915.22	-	14,705,408.99	79,803.20	26,059,300.90
Expenditures made this Year	(7,176,752.21)	(3,584,124.58)	(75,111.45)	(49,867.01)	-	(2,178,740.70)	(12,316,100.34)	(44,250.00)	(25,424,946.29)
Beginning Change in Liabilities	(27,458.33)	(2,619.09)	(855.00)	-	-	-	(446,843.34)	-	(477,775.76)
Transfers	(2,401.09)	-	-	-	-	-	-	-	(2,401.09)
Adjustments	-	-	-	-	-	-	-	-	-
Ending Cash Balance	\$ 17,151,123.03	\$ 1,061,180.58	\$ 1,136,380.89	\$ 22,584.35	\$ 11,915.22	\$ 379,311.71	\$ 8,802,276.06	\$ 219,553.20	\$ 28,784,325.04

Oklahoma Department of Corrections
Statement of Revenues, Expenditures and Changes in Fund Balances
Non-Appropriated Funds
For the Month of December 2023

	200 Fund	205 Fund	210 Fund	225 Fund	230 Fund	235 Fund	280 Fund	283 Fund	Funds
Revenues									
Current:									
Disbursement Fees	\$ 966.35	\$ -	\$ -	\$ -	\$ -	\$ -	\$ -	\$ -	\$ 966.35
Sale of Contraband	-	-	-	-	-	-	-	-	-
Bank Charge Back / Returned Check Fee	-	-	-	-	-	-	-	-	-
Other Fines, Forfeits, Penalties (Admin. Fees, Inst. Debts)	14,535.33	-	8,108.49	-	-	-	-	-	22,643.82
Interest on Investments	37,872.74	2,526.88	-	-	-	-	18,228.69	-	58,628.31
Rent from Land & Buildings	2,048.62	-	-	-	-	-	-	-	2,048.62
Insurance and Other Reimbursement for Damages	2,100.00	-	-	-	-	-	-	-	2,100.00
Reimbursement for Administrative Expense (PPWP)	11,657.89	-	-	-	-	-	-	-	11,657.89
Reimbursement of Data Processing Fees	-	-	-	-	-	-	-	-	-
Reimbursement for Travel Expense	-	-	-	-	-	-	-	-	-
Federal Reimbursements	-	-	-	-	-	-	-	-	-
Federal Funds Rec'd from Non-Gov. Ag.	-	-	-	-	-	-	-	-	-
Refunded Money Previously Disbursed - Goods & Services	255,641.32	-	-	-	-	-	-	-	255,641.32
Reimbursement for Funds Expended (Refunds - Payroll Reim.)	7,745.56	-	-	-	-	-	-	-	7,745.56
Pharmaceuticals Rebate	-	-	-	-	-	-	-	-	-
Program Income (Dog Programs)	270.00	-	-	-	-	-	-	-	270.00
Other Grants, Refunds and Reimbursements (P-card Rebate)	3,545.13	-	-	-	-	-	-	-	3,545.13
Farm Products General	-	-	-	-	-	-	1,154,843.88	-	1,154,843.88
Charge for Service - (Water Treatment Plant)	-	-	-	-	-	-	-	-	-
Laboratory and Medical Services	18,167.97	-	-	-	-	-	-	-	18,167.97
Sale of Documents (Copies)	1,950.30	-	-	-	-	-	-	-	1,950.30
Food and Beverage Sales	3,994.50	-	-	-	-	-	-	-	3,994.50
Canteen and Concession Income	-	791,666.66	-	-	-	-	-	-	791,666.66
Sale of Merchandise	-	-	-	-	-	-	1,188,652.34	-	1,188,652.34
Registration Fees	-	-	-	-	-	-	-	-	-
Paper & Other Recyclable Materials	-	-	-	-	-	-	-	-	-
Notification of Confinement - Social Security Admin	10,400.00	-	-	-	-	-	-	-	10,400.00
Contributions - Patients & Inmates	-	-	-	-	-	-	-	-	-
Probation & Parole Fees, DNA Fees, GPS Fees, Restitution Fees	293,643.52	-	-	-	-	-	-	-	293,643.52
Asset Forfeiture - Federal Judgements	-	-	-	-	-	-	-	-	-
Deposits by Patients and Offenders (Program Fees - Work Release)	604,076.41	-	-	-	-	-	2,640.23	-	606,716.64
Sale of Salvage	207.00	-	-	-	-	-	-	-	207.00
Sale of Land and/or Land Improvements	-	-	-	-	-	-	-	-	-
Total Revenues	1,268,822.64	794,193.54	8,108.49	-	-	-	2,364,365.14	-	4,435,489.81
Expenditures									
Current:									
Payroll	5,572.97	-	-	-	-	-	611,110.89	-	616,683.86
Professional Services	526,084.57	48,752.98	13,057.08	-	-	-	29,679.64	-	617,574.27
Travel	6,968.58	500.00	1,093.60	-	-	-	11,000.04	-	19,562.22
Misc. Admin. Expenses	5,432.98	47,694.55	-	-	-	-	43,446.80	-	96,574.33
Rent	261.00	2,855.40	-	-	-	-	5,795.75	-	8,912.15
Maintenance and Repair	14,207.05	52,475.04	-	-	-	-	72,574.78	-	139,256.87
Specialized Supplies and Materials	4,579.51	70,631.36	-	-	-	-	18,597.04	-	93,807.91
Production, Safety and Security	27,151.74	865.72	135.00	-	-	-	17,956.35	-	46,108.81
General Operating Expenses	811.19	14,112.67	-	-	-	-	5,046.87	-	19,970.73
Shop Expense	8,571.66	188.44	-	-	-	-	83,882.50	-	92,642.60
Furniture and Equipment	4,732.88	13,408.31	-	-	-	-	171,929.83	4,467.87	194,538.89
Library Equipment and Resources	-	-	-	-	-	-	-	-	-
Lease Purchases	-	-	-	-	-	-	-	-	-
Livestock and Poultry	-	-	-	-	-	-	-	-	-
Land and Right-of-way	-	-	-	-	-	-	-	-	-
Building, Construction and Renovation	1,440.00	-	-	-	-	-	-	-	1,440.00
Debt Service	-	-	-	-	-	-	-	-	-
Inmate Pay and Health Services	-	243,360.60	-	-	-	-	96,301.52	-	339,662.12
Tuitions, Awards and Incentives	-	-	-	-	-	-	-	-	-
Refunds and Restitutions	-	-	-	-	-	-	-	-	-
Jail Backup, County Jails and Other	122,594.88	-	-	18,142.66	-	-	-	-	140,737.54
Payment to Gov. Sub-Division	-	-	-	-	-	-	-	-	-
Assistance Payments to Agencies	-	-	-	-	-	-	-	-	-
Loans, Taxes and other Disbursements	-	-	-	-	-	-	-	-	-
Transfers - Out Sourced Health Care	113,552.71	-	-	-	-	-	-	-	113,552.71
Merchandise for Resale	-	-	-	-	-	-	1,351,605.53	-	1,351,605.53
Total Expenditures	841,961.72	494,845.07	14,285.68	18,142.66	-	171,929.83	2,351,465.58	-	3,892,630.54
Excess of Revenues Over (Under) Expenditures	(841,961.72)	(494,845.07)	(14,285.68)	(18,142.66)	-	(171,929.83)	(2,351,465.58)	-	(3,892,630.54)
Cash									
Beginning Cash Balance	16,778,612.90	765,417.34	1,142,558.08	40,727.01	11,915.22	551,241.54	8,905,237.21	219,553.20	28,415,262.50
Revenue Received this Month	1,268,822.64	794,193.54	8,108.49	-	-	-	2,364,365.14	-	4,435,489.81
Expenditures made this Month	(841,961.72)	(494,845.07)	(14,285.68)	(18,142.66)	-	(171,929.83)	(2,351,465.58)	-	(3,892,630.54)
Beginning Change in Liabilities	(52,477.70)	(3,585.23)	-	-	-	-	(115,860.71)	-	(171,923.64)
Transfers	(1,873.09)	-	-	-	-	-	-	-	(1,873.09)
Adjustments	-	-	-	-	-	-	-	-	-
Ending Cash Balance	\$ 17,151,123.03	\$ 1,061,180.58	\$ 1,136,380.89	\$ 22,584.35	\$ 11,915.22	\$ 379,311.71	\$ 8,802,276.06	\$ 219,553.20	\$ 28,784,325.04

Cost of Incarceration

Statutory Requirement

Title 57 § 561.1 ¶ E.

“At the beginning of each fiscal year, the Department of Corrections shall determine the budgeted average daily cost per inmate. The budgeted average daily cost per inmate shall include all direct and indirect costs incurred by the Department. There shall be a separate computation of budgeted average daily cost for maximum security, medium security, minimum security, and community facilities. This information shall be presented to the State Board of Corrections for informational purposes only. After the close of each fiscal year, the Department shall determine the actual average daily cost per inmate for the operational costs at each major category of correctional facility. The actual average daily cost per inmate shall include all direct and indirect costs incurred by the Department. There shall be a separate computation of the average daily rate for maximum security, medium security, minimum security, and community facilities. The Department shall present to the Board of Corrections at its January meeting comparative data on budgeted daily cost versus actual daily cost, and, after appropriate review and analysis, the Board shall adopt as a final action of the Board an average daily cost per inmate by facility category for the immediately preceding fiscal year.”

Public Only			
Facility Type	FY 2023 Budgeted	FY 2023 Actual	FY 2024 Budgeted
Maximum Security	\$104.50	\$109.67	\$95.41
Medium Security – Combined Average	\$62.55	\$67.99	\$63.68
Minimum Security – Combined Average	\$61.04	\$65.89	\$66.02
Community Correction Centers - Average	\$69.58	\$78.35	\$73.71

Incarcerates

State Facilities	Females	Males	Total
Current Population	2,188	16,719	18,907
Population Last Year	2,162	15,221	17,383
Change	26	1,498	1,524

Private Prisons	Females	Males	Total
Current Population	0	2,608	2,608
Population Last Year	0	3,920	3,920
Change	0	(1,312)	(1,312)

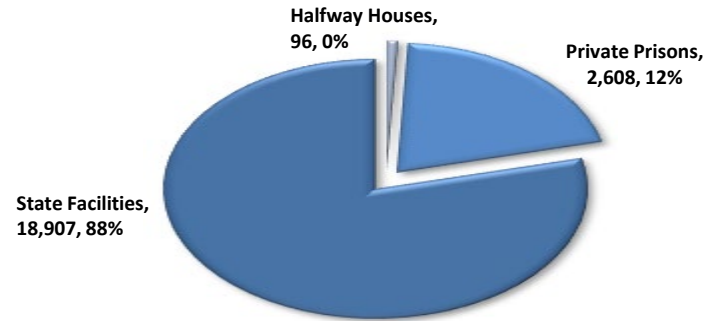
Halfway Houses	Females	Males	Total
Current Population	0	96	96
Population Last Year	0	111	111
Change	0	(15)	(15)

Out Count	Females	Males	Total
Current Population	23	189	212
Population Last Year	15	241	256
Change	8	(52)	(44)

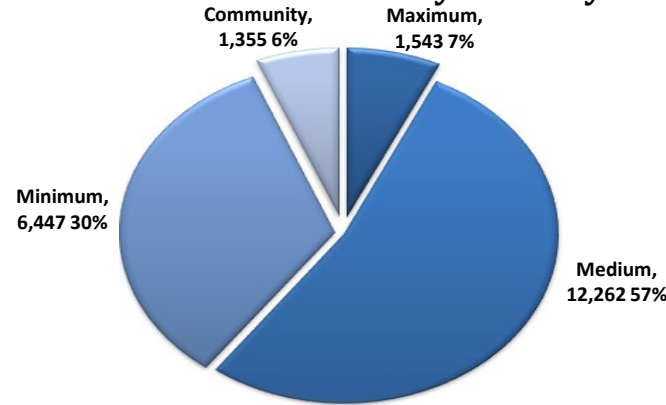
County Jail Transfers Pending	Females	Males	Total
Current Population	58	866	924
Population Last Year	51	1,180	1,231
Change	7	(314)	(307)

Grand Total	Females	Males	Total
Current Population	2,269	20,478	22,747
Population Last Year	2,228	20,673	22,901
Change	41	(195)	(154)

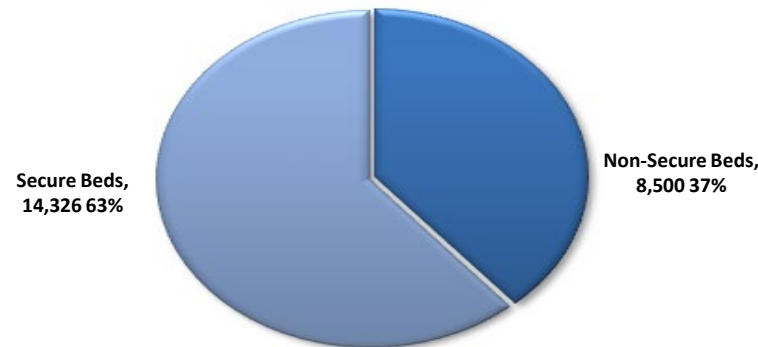
Inmates in State Facilities vs. Contract Facilities



Inmate Distribution by Security Level



Percentage of Inmates in Secure and Non-Secure Beds



Secure beds include beds in maximum and medium state and contract facilities.

Non-Secure beds include beds in minimum, state, and contract facilities, community corrections centers and halfway houses.

Community Offenders

23

GPS	Females	Males	Total
Current Population	64	115	179
Population Last Year	58	122	180
Change	6	(7)	(1)

Community Sentencing	Females	Males	Total
Current Population	659	1,890	2,549
Population Last Year	553	1,544	2,097
Change	106	346	452

Parole Supervision	Females	Males	Total
Current Population	618	2,454	3,072
Population Last Year	308	1,419	1,727
Change	310	1,035	1,345

Probation Supervision	Females	Males	Total
Current Population	4,059	15,011	19,070
Population Last Year	3,740	12,658	16,398
Change	319	2,353	2,672

Community Supervision	Females	Males	Total
Current Population	5,400	19,470	24,870
Population Last Year	4,659	15,743	20,402
Change	741	3,727	4,468

Total System Population

	Females	Males	Total
Current Population	7,669	39,948	47,617
Population Last Year	6,887	36,416	43,303
Change	782	3,532	4,314

Board of Corrections – Population Analysis



As of
December 29, 2023

Board of Corrections – Population Information

As of
 December 29, 2023

Largest Percentage of Convictions

Male Crimes	Total	Percentage	Female Crimes	Total	Percentage
Murder I	1203	6%	Child Abuse	240	11%
Robbery/Attempted Robbery	1017	5%	Trafficking in Illegal Drugs	179	8%
Lewd/Indecent Acts of Child	1036	5%	Murder I	128	6%
Rape I	869	4%	Manslaughter I	105	5%

Death Row Inmates

Male	35
Female	1

Youthful Offenders

Male	11
Female	0

Inmates Earned Credit Level

Level	Total	Percentage
1	3,058	23%
2	1,902	
3	2,300	77%
4	14,371	

Receptions and Releases for the Fiscal Year 2024

	Total	July	August	September	October	November	December	January	February	March	April	May	June
Female Receptions	442	47	96	95	84	58	62						
Male Receptions	2,913	374	446	535	567	496	495						
Female Releases	513	89	91	84	92	89	68						
Male Releases	2,740	477	499	448	475	481	360						

ODOC Total Prison Population (Including County Jail Backup) w/Projections

