

Abortion Surveillance in Oklahoma

2002-2017 SUMMARY REPORT · OKLAHOMA STATE DEPARTMENT OF HEALTH

Introduction

In 2000, the Oklahoma State Department of Health (OSDH) began its surveillance activities of Oklahoma's legally induced terminations of pregnancy (ITOP), also known as legally induced abortions. The OSDH uses these data to monitor the annual number of legal induced abortions and to describe those women receiving legal abortion services in Oklahoma. In doing so, the OSDH produces a partial accounting of pregnancies that terminate in outcomes other than a live born infant. This report follows the requirements outlined in the *Statistical Abortion Reporting Act*¹. This act outlines requirements for an Annual Abortion Report, Complications of Induced Abortion Report, and an Annual Judicial Bypass of Abortion Parental Consent Summary Report². The Annual Abortion Report includes data from the Individual Abortion Form, which physicians performing abortions are required to complete and submit electronically beginning in April, 2012³. The present report includes data collected by the office of Health Care Information, Center for Health Statistics (CHS), at the OSDH for calendar years 2002-2017.

Methods

For the report years, CHS assembled data submitted to the OSDH by the facilities licensed to perform legal abortions in the state of Oklahoma. These facilities provided data on the number of abortions and the characteristics of women who obtained legal abortions. Legal induced abortion is defined by Oklahoma statute as "the use or prescription of any instrument, medicine, drug, or any other substance or device intentionally to terminate

the pregnancy of a female known to be pregnant with an intention other than to increase the probability of a live birth, to preserve the life or health of the child after live birth, to remove an ectopic pregnancy, or to remove a dead unborn child who died as the result of a spontaneous miscarriage, accidental trauma, or a criminal assault on the pregnant female or her unborn child."⁴

The individual abortion form, which was implemented in April, 2012, includes multiple variables about women seeking abortion and each abortion procedure including: cost, method of payment, reason for abortion, ultrasound usage, and informed consent, among others. An updated abortion form was implemented in November, 2013, with 16 additional requirements. These indicators are presented in Tables 8-37 following the summary statistics.

This document reports on overall and characteristic-specific percentages, which are based only on known values. Single-year and multi-year abortion statistics are included in the report. Abortion ratios, defined as the number of abortions per 1,000 live births, and abortion rates, defined as the number of abortions per 1,000 women in a specified age group, are provided for many demographic characteristics. Population data used to compute abortion rates were obtained from the U.S. Census Bureau. For previous reports, the rates and ratios for specific female characteristics were reported in aggregate form for the entire reporting period. For this report, in order to better describe current data, rates and ratios for these characteristics are reported by year for 2015-2017. This same time span was used for Tables 5-7 and Figures 1 and 3.

¹ HB 3075, c 163, 1, eff. November 1, 2010.

² HB 3284, c. 276, § 5, eff. November 1, 2010.

³ HB 3284, c. 276, § 4, eff. November 1, 2010.

⁴ Title 63 O.S. Section 1-730.

The following age groupings were used for this report: <20, 20-24, 25-29, 30-34, and ≥ 35 years old. The number, ratio, and rate of abortions are presented for each age group. Abortion rates for women aged 19 or younger were based on population totals for women aged 15 to 19 years. Please note that reports prior to 2016 used population totals for women aged 10 to 19 years to calculate abortion rates for women aged 19 or younger; this change was made to align with the population used for the total abortion rate (15-44 years old). Rates for women aged 35 or older were based on the population of women aged 35 to 44 years. Rates for all women who obtained abortions were based on the population of women 15-44 years of age. Age was missing for less than 1 percent of all reported abortions.

Race was classified into five categories: White, Black, American Indian, Asian or Pacific Islander, and Other. Race was reported for over 99% of records. Ethnicity was not included in this analysis for two reasons. First, there was a large proportion of missing or unknown values (31 percent) in the records submitted through 2011. Second, beginning in April, 2012, data for women's ethnicity was no longer collected on the Individual Abortion Form. Therefore, the abortion numbers, ratios, and rates are presented in this report by race only.

Marital status was classified as either married (women who were married or separated) or unmarried (women who were never married, divorced, or widowed). Abortion numbers, ratios, and rates are presented by marital status. Abortion rates by marital status reflect the number of abortions per 1,000 females aged 15-44 in a specified marital group. Previously reported rates by marital status were based on the number of abortions per 1,000 females aged 15-50 years (prior to 2016 report).

Education levels of women who obtained abortions were classified as less than high school education (8th grade through 12th grade, with no diploma), high school graduate or GED⁵ completed, some college (college credit attained with no bachelor's degree), or college graduate (bachelor's degree and beyond). The number, and rate of abortions are shown by level of education. Abortion rates by educational attainment represent the number of abortions per 1,000 female population aged 18-44 years. Again, a non-standard population grouping is used here for review of general trends.

Percent distributions of abortions by previous live births and previous abortion history are presented. Previous live births were grouped into five classes: 0, 1, 2, 3, and 4 or more. Previous abortions were classified as 0, 1, 2, and 3 or more.

Measured in weeks, gestational age at the time of abortion was categorized as ≤ 8 weeks, 9-10 weeks, 11-12 weeks, 13-15 weeks, and ≥ 16 weeks. The number and percent of abortions by length of gestation are included in the report. For select characteristics (i.e., race, age, education, marital status, type of procedure, and previous live births and abortion history), gestational age is used as a summary variable.

From January 2002-March 2012, the method of abortion was classified as curettage (suction and sharp), non-surgical medical abortion (RU 486, mifepristone and misoprostol), dilation and evacuation, and "other" procedures. The number and percent of legal abortions for each abortion method are provided. In April 2012, when the new individual abortion form was implemented, the method of abortion categories changed and was classified in the following categories: dilation

⁵ General educational development.

and curettage, dilation and evacuation, RU 486, suction aspiration, and “other” procedures. In order to combine this data for the purpose of the summary statistics, these categories were combined based on their definitions. The new categories are presented in Tables 5-7 and 12, and Figure 4. The previous data classified as “sharp curettage” is included in the “dilation and curettage” category, and previous data classified as “suction curettage” is included in the “suction aspiration” category.

To address concerns regarding confidentiality of women obtaining abortions and the stability of percentages, ratios, and rates, any computed statistic was suppressed when the numerator used in the calculation was less than 5. Summary statistics described in this report and Tables 1-7 reflect legal induced abortions to Oklahoma female residents. Statistics presented in Tables 8-37 include data for all abortions which were performed in Oklahoma in 2017, including abortions to non-Oklahoma residents, per the requirements of the 2010 *Statistical Abortion Reporting Act*.

Results

From 2002 to 2017, there have been 87,373 induced abortions (henceforth referred to as abortions) to Oklahoma residents reported to the OSDH (Table 1). On average there were 5,461 abortions per year, however, the median number of abortions in a year was 5,843. Over the time period reviewed, the peak year for the number of abortions was 2006. In that year, there were 6,807 abortions reported to the OSDH. The fewest number (3,942) of abortions was recorded in 2016. For the reporting period, the relative decrease in the number of abortions was 29.3 percent.

Oklahoma experienced a 29.2 percent decline in the abortion ratio⁶ between 2002 and 2017 (Table 2). Over this period the abortion ratio dropped from 123.5 abortions per 1,000 live births in 2002 to 87.5 abortions per 1,000 live births in 2017. The abortion ratio peaked in 2006 at 126.0, and then dropped from 2006 to its lowest level in 2016. For the reporting period overall, the abortion ratio was recorded to be 103.6 abortions per 1,000 live births.

The abortion rate⁷ for Oklahoma decreased from 8.5 abortions per 1,000 women aged 15-44 years in 2002 to 5.5 abortions per 1,000 women aged 15-44 years in 2017 (Table 2). Overall, the abortion rate declined 29.3 percent over the reporting period. The abortion rate fluctuated across the 15-year reporting period, reaching a high of 9.4 abortions per 1,000 women aged 15-44 years in 2006 and a low of 5.1 abortions per 1,000 female population aged 15-44 years in 2016. The abortion rate for the full reporting interval was 8.7 abortions per 1,000 female population aged 15-44 years.

Women aged 20-24 years obtained 34.0 percent of all abortions during the period 2002 to 2017. Women under 20 years of age obtained 15.8 percent of all abortions, with only a small fraction (<1 percent) of abortions occurring to the youngest of women (<15 years of age). Less than 3 percent of all abortions occurred to women aged 40 or older. The majority of abortions (58.1 percent) occurred to women in the principal childbearing years (ages 20-29) (Table 3). In 2017, abortion ratios were similar in the <20, 20-24, and ≥35 age groups at 122.0, 101.8, and 96.7 respectively. In contrast, the abortion rates were the lowest in the ≥35 and <20 age groups at 2.3 and 3.7 abortions per 1,000 female population (Table 4). Abortion

⁶ Number of abortions per 1,000 live births; previous reports only included births 15-44 for this calculation.

⁷ Number of abortions per 1,000 women in a specified age group.

rates were the highest in the 20-24 and 25-29 age groups at 10.1 and 9.3 abortions per 1,000 women. The 2017 abortion rate for 30-34 year old women was 5.8 abortions per 1,000 female population. Figure 2 shows over time that teenage women and women 35 years or older have consistently had the highest abortion ratios in Oklahoma. Additional characteristics of women by age can be found in Table 5.

More than two-thirds of abortions were to White women for the years under review. Overall, Black women obtained 19.0 percent of abortions, while another 5.8 percent were accounted for by American Indian women (Table 3). For the reporting period, the abortion ratio for Black women was highest at 203.1 abortions per 1,000 live births, followed by Asian or Pacific Island women at 127.6 abortions per 1,000 live births). The abortion ratio for White women was 92.0 per 1,000 live births, with the lowest rate experienced by American Indian women at 52.6 abortions per 1,000 live births⁸. A similar pattern of order was seen for abortion rates, with Black women having a rate that was more than 3 times higher than American Indian women and more than twice as high as White women. To examine the patterns in more recent years, please refer to Table 4.

Racial variability was evident when considering the age distribution of the women who obtained abortions from 2015-2017 (Table 6). Broadly speaking, differences between White and Black women were small. White women had a lower percentage of abortions occurring to ages 20-29 (White, 58.8 percent; Black, 62.9 percent), while Black women had a lower percentage of abortions to women in the oldest age group (age ≥35: White, 12.4 percent; Black, 10.0 percent).

⁸ Please note that the numbers included in the 2016 report for these ratios were incorrect; they should have been 205.1, 132.2, 93.5, and 53.4, respectively.

From 2015-2017, American Indian women had the highest percentage of abortions for ages less than 20 years (13.1 percent). This is consistent with the entire reporting period. Conversely, from 2015-2017, Asian or Pacific Island women had the lowest percentages of abortions in the younger age groups with approximately 47.9 percent of this racial group's abortions occurring to women 30 years or older (Table 6).

Examining abortions by educational attainment reveals that in 2017, women with a high school education or equivalent GED accounted for the largest percentage of abortions (38.3 percent), while women with some college education accounted for the second highest percentage (35.9 percent). College graduates made up 14.7 percent of Oklahoma resident abortions in 2017 (Table 3). Over the sixteen years of data included in this report, the distribution of abortions by education was relatively unchanged. In 2017, the number of abortions per 1,000 women aged 18-44 years was highest for women with a high school diploma or GED (9.2) and lowest for women who had graduated from college (3.8) (Table 4).

For the reporting period, 80.1 percent of abortions were to women who were unmarried (Table 3). From 2015-2017, Black women experienced the highest percentage of abortions to unmarried women, while Asian or Pacific Island women had the lowest percentage (89.0 percent and 52.7 percent, respectively; Table 6). There was an inverse relationship between a woman's age and the proportion of abortions that were to unmarried women, with older women constituting a diminishing percentage of unmarried abortions (Table 5). In 2017, the abortion ratio and rate for unmarried women were 164.2 abortions per 1,000 live births and 8.0 abortions per 1,000 women aged 15-44 years, respectively (Table 4). The comparable numbers for married women were 31.8 and 2.8, respectively.

The number and percent of abortions by gestational age for selected characteristics of women who obtained abortions are presented in Table 7. For 2015-2017, 76.4 percent of abortions occurred prior to 9 weeks gestation. More than 95.6 percent of all abortions occurred at less than 13 weeks gestation. A very small percentage of abortions occurred beyond 16 weeks (1.3 percent). Figure 3 displays abortion timing by age group and indicates that older women were more likely to obtain abortions during the first 8 weeks after becoming pregnant.

For the overall reporting period, approximately 38.9 percent of reported abortions were to women who had not had a previous live birth (Table 3). Of the remaining percentage of abortions that occurred to women with a previous live birth, those with one previous live birth accounted for 26.6 percent; women with two previous live births, 21.2 percent; women with three previous live births, 9.0 percent; and women with 4 or more previous live births, 4.4 percent.

For the overall reporting period, approximately 64.5 percent of reported abortions were to women who had no previous abortions (Table 3). Approximately 1 in 4 women obtaining an abortion had one previous abortion (23.7 percent). Of the remaining percentage of abortions that occurred to women with previous abortions, those with two previous abortions accounted 7.6 percent; and women with 3 or more accounted for 4.2 percent.

Suction aspiration was the most common type of procedure for abortions between 2002 and 2017, accounting for 62.6 percent of abortions. Nonsurgical medical abortions, which involve the administration of medication to induce abortion, made up 23.5 percent of Oklahoma resident abortions. Dilation and evacuation amounted to just 4.1 percent of all abortions

during the reporting period. For 2015-2017, 37.3 percent of suction aspiration procedures occurred during the first 8 weeks of gestation, while nearly all medical abortions (97.3 percent) occurred in the first 8 weeks of pregnancy, which is optimal for this type of procedure to be effective at inducing abortion⁹. In 2015-2017, 46.7 percent of Black women who obtained an abortion were treated using the suction aspiration (Table 6). Physicians treating American Indian women and women classified as the “other” racial category were more likely to use medical abortion than were other racial groups (60.6 and 47.2 percent, respectively). There was an inverse relationship between age and the proportion of women who received an abortion by suction aspiration; as age increased the proportion of women treated with suction aspiration decreased (Table 5). The proportion of women electing a nonsurgical medical abortion increased with age (Table 5).

Over the reporting period, the proportion of abortions by the suction aspiration procedure decreased by approximately 43 percent, while the percentage of non-surgical abortions have increased dramatically. In 2002, non-surgical abortions made up only 4.5 percent of all abortions performed in Oklahoma, while in 2017 non-surgical abortions made up 52.8 percent of all abortions (Figure 4).

Tables 8-37 present required data outlined in the *63 § 1-738m Annual Abortion Report*¹⁰ section of the 2010 Statistical Abortion Reporting Act. These tables present the 46 requirements as well as the corresponding data.

⁹ Kulier R. et al. (2011). Medical methods for first trimester abortion. Published online November, 2011. The Cochrane Library.

¹⁰ Full title of section: *63 § 1-738m Annual Abortion Report – Annual Judicial Bypass of Abortion parental Consent Summary*.

Discussion

Oklahoma had 87,373 reported abortions from 2002-2017. During the sixteen-year reporting period, the rate of abortions was higher among certain demographics. Namely, women aged 20-29 years, Black women, women with less education and those who were unmarried had higher rates of abortions compared to other women of child-bearing age. From 2002-2017, approximately 67.5 percent of abortions were to White women; however, Blacks and Asians had both a higher abortion rate and ratio during the time period. There were other differences evident in the proportion of abortions for the various racial groups. For instance, compared to women in the other racial categories, Asian women had a higher proportion of abortions for those aged 30 years and older, college graduates, and those who were married. American Indian women had a larger proportion of women under the age of 20 years who had an abortion compared to the other racial groups, and also were more likely to have a nonsurgical medical abortion.

The number of abortions declined by 29.3 percent over the period 2002-2017, and the abortion ratio and rate dropped by a greater extent (29.2 and 33.0 percent, respectively). The decrease in the abortion ratio was driven by a reduction in the number of abortions in Oklahoma while the number of births has changed little. The number of births in the state declined 0.2 percent over the reporting period while the number of abortions declined by 29.3 percent. Combined, these trends resulted in the 29.2 percent decline in the abortion ratio. Direct comparisons to national level abortion data are difficult due to the character of data collection. National reporting suffers from frequent changes in the geographic areas covered, as some states do not report abortion data, while others report data intermittently. Abortion data is requested

annually; from 2004-2013, 47 areas have reported data every year. Among these 47 areas, the abortion rate in 2013 was 12.5 abortions per 1,000 women aged 15-44 years, and the abortion ratio was 200 per 1,000 live births. This represents a 5% decrease from 2012 to 2013. The general patterns in the U.S. measures indicate a downward trend in the number, rate, and ratio of abortions from 2003-2013, which decreased 20 percent, 21 percent, and 17 percent, respectively, and reached their lowest level in 2013 for the entire period of analysis (2003-2013)¹¹.

There were slight shifts in the demographic distribution of abortions for key characteristics. Percentage of abortions increased slightly for those aged 35 years and older from 10.9 in 2002 to 12.2 in 2017. Women with some college education and those with college degrees increased their proportion of all abortions, rising from 28.8 percent and 11.6 percent in 2002 to 35.9 percent and 14.7 percent in 2017, respectively. These changes in proportions should be interpreted as general patterns and not as statistically significant changes as no inferential statistics were performed. In the “other” racial group there was a sizable drop from 5.9 percent of all abortions in 2002 across the reporting period until 2011. The “other” racial group saw a significant increase to 6.2 percent in 2012, and 13.4 in 2017 with the implementation of a new abortion form (Table 3). These fluctuations are likely due to changes in how racial data is collected and coded rather than real change in the fraction of abortions for which the other racial category is a source.

¹¹ Jatlaoui TC, Ewing A, Mandel MG, et al. Abortion Surveillance — United States, 2013. *MMWR Surveill Summ* 2016;65(No. SS-12):1–44. DOI: <http://dx.doi.org/10.15585/mmwr.ss6512a1>.

Limitations

These abortion data were subject to a number of limitations. First, abortion data reported here reflect only those reported to the OSDH. As a result, these abortion statistics may underestimate the true, but unknown, number of abortions in Oklahoma. Second, data submitted by these facilities may be incomplete. Third, abortions occurring to Oklahoma residents outside the state were not submitted to OSDH for inclusion in the abortion database.

Table 1. Number of Legal Induced Abortions by Characteristics of Women, Oklahoma Residents, 2002-2017

Characteristic	2002	2003	2004	2005	2006	2007	2008	2009	2010	2011	2012	2013	2014	2015	2016	2017	Total
Total	6,215	6,341	6,230	6,364	6,807	6,363	6,144	6,044	5,641	4,840	4,644	4,587	4,487	4,330	3,942	4,394	87,373
Age (yrs)																	
<20	1,159	1,235	1,111	1,095	1,104	1,094	1,020	1,068	866	706	704	596	606	486	393	467	13,710
20-24	2,151	2,210	2,180	2,218	2,447	2,245	2,089	1,998	1,848	1,674	1,542	1,484	1,427	1,443	1,238	1,352	29,546
25-29	1,323	1,393	1,378	1,462	1,547	1,474	1,426	1,356	1,404	1,211	1,156	1,207	1,152	1,113	1,114	1,267	20,983
30-34	859	890	904	895	894	837	846	874	839	667	695	742	770	768	701	773	12,954
≥35	670	613	651	658	754	689	714	660	641	560	538	545	523	519	491	535	9,761
Race																	
White	4,159	4,493	4,448	4,551	4,864	4,464	4,323	4,338	3,871	3,433	3,109	2,847	2,672	2,608	2,279	2,515	58,974
Black	1,143	1,138	1,147	1,256	1,304	1,318	1,168	1,063	1,054	909	839	846	813	882	808	923	16,611
American Indian	349	377	371	352	414	367	407	376	389	281	262	250	247	208	187	234	5,071
Asian	198	246	209	181	214	186	167	213	216	136	144	164	171	177	149	133	2,904
Other	366	87	55	24	11	28	79	54	111	81	290	478	579	453	516	586	3,798
Marital status																	
Married	1,316	1,329	1,318	1,308	1,414	1,247	1,238	1,217	1,095	915	856	865	790	811	741	925	17,385
Unmarried	4,899	5,012	4,912	5,056	5,393	5,116	4,906	4,827	4,546	3,925	3,788	3,720	3,696	3,518	3,200	3,465	69,979
Education																	
<HS	1,151	1,105	1,038	1,038	1,073	1,064	932	1,011	900	683	638	609	603	446	392	487	13,170
HS or GED	2,551	2,611	2,571	2,520	2,765	2,448	2,534	2,407	2,083	1,920	1,795	1,753	1,691	1,695	1,564	1,678	34,586
Some college	1,790	1,821	1,808	1,932	1,995	1,931	1,755	1,774	1,858	1,547	1,486	1,512	1,505	1,477	1,337	1,574	27,102
College graduate	723	804	812	873	974	920	923	852	800	689	725	695	675	709	645	643	12,462
Previous live births																	
0	2,382	2,440	2,331	2,425	2,573	2,481	2,321	2,357	2,181	1,912	1,934	1,809	1,817	1,748	1,555	1,681	33,947
1	1,730	1,782	1,757	1,754	1,884	1,735	1,639	1,574	1,490	1,295	1,187	1,182	1,126	1,094	970	1,052	23,251
2	1,327	1,320	1,395	1,387	1,504	1,351	1,323	1,289	1,141	990	920	925	946	874	823	975	18,490
3	526	560	532	551	595	553	586	558	532	413	390	434	397	394	387	457	7,865
≥4	250	239	215	247	251	241	275	266	297	229	213	237	199	216	199	228	3,802
Previous ITOPs																	
0	3,846	4,211	3,964	4,129	4,322	3,992	3,879	3,869	3,502	2,918	3,103	3,038	3,015	2,889	2,614	3,062	56,353
1	1,578	1,476	1,532	1,530	1,717	1,585	1,471	1,409	1,404	1,272	989	1,036	962	959	913	887	20,720
2	505	435	475	470	488	513	499	481	466	433	343	335	315	306	284	285	6,633
≥3	286	219	259	235	280	271	295	285	269	217	209	178	190	170	123	157	3,643

Table 2. Number, Ratio¹, and Rate² of Legal Induced Abortions, Oklahoma Residents, 2002-2017

Year	Number	Live births ³	Ratio ¹	Population ⁴	Rate ²
2002	6,215	50,310	123.5	728,492	8.5
2003	6,341	50,874	124.6	726,158	8.7
2004	6,230	51,157	121.8	723,187	8.6
2005	6,364	51,775	122.9	722,500	8.8
2006	6,807	54,010	126.0	725,330	9.4
2007	6,363	54,956	115.8	727,495	8.7
2008	6,144	54,753	112.2	728,647	8.4
2009	6,044	54,541	110.8	732,789	8.2
2010	5,641	53,205	106.0	738,043	7.6
2011	4,840	52,252	92.6	742,805	6.5
2012	4,644	52,740	88.1	747,994	6.2
2013	4,587	53,351	86.0	756,016	6.1
2014	4,487	53,286	84.2	762,653	5.9
2015	4,330	53,132	81.5	768,327	5.6
2016	3,942	52,607	74.9	768,431	5.1
2017*	4,394	50,208	87.5	768,431	5.7
Total	87,373	843,157	103.6	11,867,298	8.7
Percent change, 2002-2017	-29.3	-0.2	-29.2	5.5	-33.0

¹ Number of abortions per 1,000 live births

² Number of abortions per 1,000 female population aged 15-44 years

³ Final Birth Statistics, OK2SHARE, OSDH.

⁴ OK2SHARE, Vital Statistics, 2002-2017, number of females aged 15-44 years

*Preliminary 2017 data for Oklahoma resident birth counts as of 5/22/2018. Population data for 2017 uses 2016 estimates. These will be updated in the next annual report.

For previous reports please visit:

https://www.ok.gov/health/Data_and_Statistics/Center_For_Health_Statistics/Health_Care_Information/Induced_Termination_of_Pregnancy/

Population data available upon request.

Table 3. Percent^a of Legal Induced Abortions by Characteristics of Women, Oklahoma Residents, 2002-2017

Characteristic	2002	2003	2004	2005	2006	2007	2008	2009	2010	2011	2012	2013	2014	2015	2016	2017	Total
Age (yrs)																	
<20	18.8	19.5	17.9	17.3	16.4	17.3	16.7	17.9	15.5	14.7	15.2	13.0	13.5	11.2	10.0	10.6	15.8
20-24	34.9	34.9	35.0	35.1	36.3	35.4	34.3	33.6	33.0	34.7	33.3	32.4	31.9	33.3	31.5	30.8	34.0
25-29	21.5	22.0	22.1	23.1	22.9	23.3	23.4	22.8	25.1	25.1	24.9	26.4	25.7	25.7	28.3	28.8	24.1
30-34	13.9	14.0	14.5	14.1	13.3	13.2	13.9	14.7	15.0	13.8	15.0	16.2	17.2	17.7	17.8	17.6	15.0
≥35	10.9	9.7	10.5	10.4	11.2	10.9	11.7	11.1	11.5	11.6	11.6	11.9	11.7	12.0	12.5	12.2	11.2
Race																	
White	66.9	70.9	71.4	71.5	71.5	70.2	70.4	71.8	68.6	70.9	67.0	62.1	59.6	60.3	57.9	57.3	67.5
Black	18.4	18.0	18.4	19.7	19.2	20.7	19.0	17.6	18.7	18.8	18.1	18.5	18.1	20.4	20.5	21.0	19.0
American Indian	5.6	6.0	6.0	5.5	6.1	5.8	6.6	6.2	6.9	5.8	5.6	5.5	5.5	4.8	4.8	5.3	5.8
Asian	3.2	3.9	3.4	2.8	3.1	2.9	2.7	3.5	3.8	2.8	3.1	3.6	3.8	4.1	3.8	3.0	3.3
Other	5.9	1.4	0.9	0.4	0.2	0.4	1.3	0.9	2.0	1.7	6.2	10.4	12.9	10.5	13.1	13.4	4.3
Marital status																	
Married	21.2	21.0	21.2	20.6	20.8	19.6	20.2	20.1	19.4	18.9	18.4	18.9	17.6	18.7	18.8	21.1	19.9
Unmarried	78.8	79.0	78.8	79.5	79.2	80.4	79.9	79.9	80.6	81.1	81.6	81.1	82.4	81.3	81.2	78.9	80.1
Education																	
<HS	18.5	17.4	16.7	16.3	15.8	16.7	15.2	16.7	16.0	14.1	13.7	13.3	13.5	10.3	10.0	11.1	15.1
HS or GED	41.1	41.2	41.3	39.6	40.6	38.5	41.2	39.8	36.9	39.7	38.7	38.4	37.8	39.2	39.7	38.3	39.6
Some college	28.8	28.7	29.0	30.4	29.3	30.4	28.6	29.4	32.9	32.0	32.0	33.1	33.6	34.1	34.0	35.9	31.0
College graduate	11.6	12.7	13.0	13.7	14.3	14.5	15.0	14.1	14.2	14.2	15.6	15.2	15.1	16.4	16.4	14.7	14.3
Previous live births																	
0	38.3	38.5	37.4	38.1	37.8	39.0	37.8	39.0	38.7	39.5	41.7	39.4	40.5	40.4	39.5	38.3	38.9
1	27.8	28.1	28.2	27.6	27.7	27.3	26.7	26.0	26.4	26.8	25.6	25.8	25.1	25.3	24.7	24.0	26.6
2	21.4	20.8	22.4	21.8	22.1	21.2	21.5	21.3	20.2	20.5	19.8	20.2	21.1	20.2	20.9	22.2	21.2
3	8.5	8.8	8.5	8.7	8.7	8.7	9.5	9.2	9.4	8.5	8.4	9.5	8.9	9.1	9.8	10.4	9.0
≥4	4.0	3.8	3.5	3.9	3.7	3.8	4.5	4.4	5.3	4.7	4.6	5.2	4.4	5.0	5.1	5.2	4.4
Previous ITOPs																	
0	61.9	66.4	63.6	64.9	63.5	62.8	63.1	64.0	62.1	60.3	66.8	66.2	67.3	66.8	66.5	69.7	64.5
1	25.4	23.3	24.6	24.0	25.2	24.9	23.9	23.3	24.9	26.3	21.3	22.6	21.5	22.2	23.2	20.2	23.7
2	8.1	6.9	7.6	7.4	7.2	8.1	8.1	8.0	8.3	9.0	7.4	7.3	7.0	7.1	7.2	6.5	7.6
≥3	4.6	3.5	4.2	3.7	4.1	4.3	4.8	4.7	4.8	4.5	4.5	3.9	4.2	3.9	3.1	3.6	4.2

^aPercentages are based on the number of known values.

Table 4. Number, Ratio¹, and Rate² of Legal Induced Abortions by Characteristics of Women, Oklahoma Residents, 2015-2017

Characteristic	Number			Live births			Ratio ¹			Rate ²		
	2015	2016	2017	2015	2016	2017 ⁶	2015	2016	2017 ⁶	2015	2016	2017 ⁶
Total	4,330	3,942	4,394	53,132	52,607	50,208	81.5	74.9	87.5	5.6	5.1	5.7
Race												
White	2,608	2,279	2,515	39,788	39,039	37,270	65.5	58.4	67.5	4.5	4.0	4.4
Black	882	808	923	5,406	5,539	5,307	163.2	145.9	173.9	11.7	10.7	12.2
American Indian	208	187	234	6,092	6,201	5,841	34.1	30.2	40.1	2.3	2.1	2.6
Asian	177	149	133	1,846	1,828	1,788	95.9	81.5	74.4	6.7	5.5	4.9
Age (yrs)												
<20	486	393	467	4,434	4,295	3,829	109.6	91.5	122.0	3.9	3.1	3.7
20-24	1,443	1,238	1,352	14,799	14,255	13,279	97.5	86.8	101.8	10.4	9.2	10.1
25-29	1,113	1,114	1,267	16,521	16,290	15,780	67.4	68.4	80.3	8.3	8.2	9.3
30-34	768	701	773	11,920	12,196	11,771	64.4	57.5	65.7	5.8	5.3	5.8
≥35	519	491	535	5,442	5,556	5,533	95.4	88.4	96.7	2.2	2.1	2.3
Education³												
<HS	446	392	487	9,085	8,797	8,057	49.1	44.6	60.4	5.5	5.0	6.2
HS or GED	1,695	1,564	1,678	15,156	15,321	14,771	111.8	102.1	113.6	9.3	8.5	9.2
Some college	1,477	1,337	1,574	16,633	16,201	15,651	88.8	82.5	100.6	5.6	5.1	6.0
College graduate	709	645	643	12,096	12,153	11,593	58.6	53.1	55.5	4.3	3.8	3.8
Marital Status												
Married ⁴	811	741	925	30,933	30,372	29,097	26.2	24.4	31.8	2.4	2.2	2.8
Unmarried ⁵	3,518	3,200	3,465	22,188	22,227	21,105	158.6	144.0	164.2	8.2	7.4	8.0

¹Number of abortions per 1,000 live births

²Number of abortions per 1,000 female population aged 15-44

³Number of abortions per 1,000 female population aged 18-44 years

⁴Married includes spouse absent

⁵Unmarried includes never married, divorced and widow ed

⁶Preliminary 2017 data for Oklahoma resident birth counts as of 5/22/2018. Population data for 2017 uses 2016 estimates. These will be updated in the next annual report.

Population data used to calculate rates are available upon request.

Table 5. Number and Percent^v of Legal Induced Abortions by Age Group and Selected Characteristics, Oklahoma Residents, 2015-2017

Characteristic	Age group (yrs)				
	<20	20-24	25-29	30-34	≥35
Race					
White	798 (59.3)	2,338 (57.8)	2,009 (57.5)	1,339 (59.9)	916 (59.3)
Black	247 (18.4)	862 (21.4)	782 (22.4)	460 (20.6)	261 (16.9)
American Indian	82 (6.1)	222 (5.5)	159 (4.6)	94 (4.2)	71 (4.6)
Asian	23 (1.7)	97 (2.4)	118 (3.4)	97 (4.3)	122 (7.9)
Other	195 (14.5)	514 (12.7)	424 (12.1)	247 (11.0)	175 (11.3)
Education					
<HS	512 (38.1)	299 (7.4)	273 (7.8)	142 (6.4)	99 (6.4)
HS or GED	553 (41.1)	1,749 (43.4)	1,335 (38.2)	791 (35.4)	508 (32.9)
Some college	270 (20.1)	1,609 (39.9)	1,241 (35.6)	776 (34.7)	490 (31.8)
College graduate	10 (0.7)	374 (9.3)	642 (18.4)	526 (23.5)	445 (28.9)
Marital status					
Married	21 (1.6)	422 (10.5)	731 (20.9)	689 (30.8)	610 (39.5)
Unmarried	1,324 (98.4)	3,610 (89.5)	2,761 (79.1)	1,552 (69.3)	935 (60.5)
Previous live births					
0	1,185 (88.2)	2,133 (53.0)	1,102 (31.6)	423 (18.9)	140 (9.1)
1	144 (10.7)	1,175 (29.2)	947 (27.1)	532 (23.7)	318 (20.6)
2	13 (1.0)	525 (13.0)	899 (25.8)	676 (30.2)	558 (36.1)
3	*	157 (3.9)	404 (11.6)	361 (16.1)	314 (20.3)
≥4	*	37 (0.9)	139 (4.0)	250 (11.2)	215 (13.9)
Previous induced abortions					
0	1,251 (93.1)	3,162 (78.6)	2,178 (62.4)	1,170 (52.2)	800 (51.9)
1	82 (6.1)	690 (17.1)	891 (25.5)	644 (28.7)	452 (29.3)
2	9 (0.7)	135 (3.4)	288 (8.3)	270 (12.0)	173 (11.2)
≥3	*	38 (0.9)	135 (3.9)	158 (7.1)	117 (7.6)
Type of Procedure					
Suction Aspiration	609 (45.3)	1,696 (42.1)	1,427 (41.0)	909 (40.7)	603 (39.2)
RU-486	536 (39.9)	1,788 (44.4)	1,597 (45.8)	1031 (46.2)	724 (47.1)
Dilation and Curettage	101 (7.5)	277 (6.9)	260 (7.5)	166 (7.4)	105 (6.8)
Dilation and Evacuation	97 (7.2)	264 (6.6)	199 (5.7)	125 (5.6)	105 (6.8)

^vPercentages are based on the number of known values.

Table 6. Number and Percent^v of Legal Induced Abortions by Race and Selected Characteristics, Oklahoma Residents, 2015-2017

Characteristic	Race				
	White	Black	Am. Indian	Asian	Other
Age (yrs)					
<20	798 (10.8)	247 (9.5)	82 (13.1)	23 (5.0)	195 (12.5)
20-24	2,338 (31.6)	862 (33.0)	222 (35.4)	97 (21.2)	514 (33.1)
25-29	2,009 (27.2)	782 (29.9)	159 (25.3)	118 (25.8)	424 (27.3)
30-34	1,339 (18.1)	460 (17.6)	94 (15.0)	97 (21.2)	247 (15.9)
≥35	916 (12.4)	261 (10.0)	71 (11.3)	122 (26.7)	175 (11.3)
Education					
Less than HS	682 (9.2)	216 (8.3)	95 (15.2)	35 (7.7)	296 (19.1)
HS or GED	2,831 (38.3)	1,040 (39.8)	263 (42.0)	144 (31.6)	657 (42.4)
Some college	2,601 (35.2)	993 (38.0)	212 (33.1)	124 (27.2)	457 (29.5)
College graduate	1,238 (17.3)	363 (13.9)	57 (9.1)	153 (33.6)	138 (8.9)
Marital Status					
Married	1,528 (20.7)	287 (11.0)	93 (14.8)	216 (47.3)	351 (22.6)
Unmarried	5,873 (79.4)	2,325 (89.0)	535 (85.2)	241 (52.7)	1,203 (77.4)
Previous Live Births					
0	3,192 (43.2)	817 (31.3)	234 (37.3)	193 (42.1)	545 (35.1)
1	1,794 (24.3)	718 (27.5)	159 (25.4)	81 (17.7)	363 (23.4)
2	1,501 (20.3)	590 (22.6)	131 (20.9)	124 (27.1)	323 (20.8)
3	632 (8.6)	299 (11.5)	63 (10.1)	43 (9.4)	201 (12.9)
≥4	276 (3.7)	188 (7.2)	40 (6.4)	17 (3.7)	121 (7.8)
Previous ITOPS					
0	5,090 (68.9)	1,617 (61.9)	427 (68.1)	320 (70.0)	1,104 (71.1)
1	1,580 (21.4)	644 (24.7)	127 (20.3)	96 (21.0)	312 (20.1)
2	483 (6.5)	219 (8.4)	46 (7.3)	33 (7.2)	94 (6.1)
≥3	240 (3.3)	132 (5.1)	27 (4.3)	8 (1.8)	42 (2.7)
Type of Procedure					
Suction Aspiration	3,156 (42.8)	1,218 (46.7)	99 (15.8)	195 (43.0)	575 (37.1)
RU-486	3,387 (45.9)	967 (37.1)	379 (60.6)	209 (46.0)	731 (47.2)
Dilation and Curettage	441 (6.0)	232 (8.9)	86 (13.8)	22 (4.9)	128 (8.3)
Dilation and Evacuation	395 (5.4)	191 (7.3)	61 (9.8)	28 (6.2)	115 (7.4)

^vPercentages are based on the number of known values.

Table 7. Number and Percent^x of Legal Induced Abortions by Gestational Age and Selected Characteristics, Oklahoma Residents, 2015-2017

Characteristic	Gestational age (wks)				
	≤ 8 wks	9-10 wks	11-12 wks	13-15 wks	≥ 16 wks
Race					
White	5,790 (59.9)	787 (55.9)	552 (53.8)	197 (51.0)	73 (43.7)
Black	1,857 (19.2)	363 (25.8)	276 (26.9)	83 (21.5)	32 (19.2)
American Indian	471 (4.9)	62 (4.4)	55 (5.4)	31 (8.0)	10 (6.0)
Asian	369 (3.8)	39 (2.8)	20 (2.0)	11 (2.9)	17 (10.2)
Other	1,174 (12.2)	158 (11.2)	124 (12.1)	64 (16.6)	35 (21.0)
Age (yrs)					
<20	962 (10.0)	179 (12.7)	139 (13.5)	46 (11.9)	20 (12.0)
20-24	3,029 (31.3)	485 (34.4)	346 (33.7)	121 (31.4)	52 (31.1)
25-29	2,683 (27.8)	391 (27.8)	270 (26.3)	106 (27.5)	42 (25.2)
30-34	1,765 (18.3)	224 (15.9)	159 (15.5)	64 (16.6)	29 (17.4)
≥35	1,226 (12.7)	130 (9.2)	113 (11.0)	49 (12.7)	24 (14.4)
Education					
<HS	896 (9.3)	187 (13.3)	153 (14.9)	58 (15.0)	31 (18.7)
HS or GED	3,744 (38.8)	552 (39.3)	424 (41.4)	175 (45.3)	40 (24.1)
Some college	3,361 (34.8)	508 (36.2)	331 (32.3)	113 (29.3)	71 (42.8)
College graduate	1,658 (17.2)	158 (11.3)	117 (11.4)	40 (10.4)	24 (14.5)
Marital Status					
Married	1,998 (20.7)	229 (16.3)	156 (15.2)	59 (15.3)	32 (19.2)
Unmarried	7,665 (79.3)	1,180 (83.8)	871 (84.8)	327 (84.7)	135 (80.8)
Previous Live Births					
0	3,965 (41.0)	502 (35.7)	338 (32.9)	119 (30.8)	60 (35.9)
1	2,321 (24.0)	366 (26.0)	280 (27.3)	102 (26.4)	44 (26.4)
2	2,018 (20.9)	298 (21.2)	229 (22.3)	91 (23.6)	34 (20.4)
3	916 (9.5)	153 (10.9)	111 (10.8)	43 (11.1)	14 (8.4)
≥4	441 (4.6)	87 (6.2)	69 (6.7)	31 (8.0)	15 (9.0)
Previous Induced Abortions					
0	6,518 (67.5)	966 (68.8)	678 (66.1)	277 (71.8)	124 (74.3)
1	2,153 (22.3)	284 (20.2)	228 (22.2)	63 (16.3)	28 (16.8)
2	648 (6.7)	105 (7.5)	79 (7.7)	31 (8.0)	11 (6.6)
≥3	340 (3.5)	50 (3.6)	41 (4.0)	15 (3.9)	*
Type of Procedure					
Suction Aspiration	3,598 (37.3)	948 (67.7)	640 (62.3)	56 (14.5)	*
RU-486	5,525 (57.3)	147 (10.5)	*	*	0 (0.0)
Dilation and Curettage	513 (5.3)	303 (21.6)	85 (8.3)	8 (2.1)	0 (0.0)
Dilation and Evacuation	6 (0.1)	*	300 (29.2)	319 (82.6)	161 (98.2)

^xPercentages are based on the number of known values.

Figure 1. Abortion ratio* by age group for women who obtained a legal abortion: Oklahoma Residents, 2015-2017

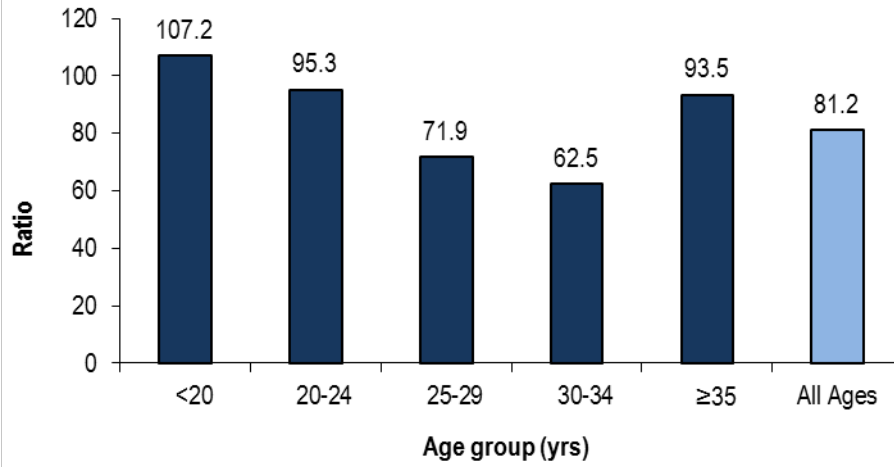
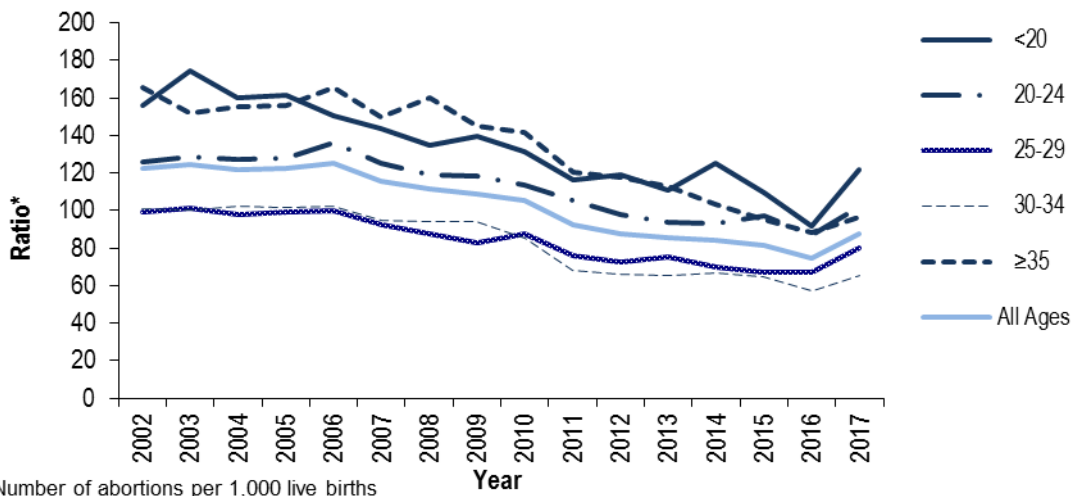
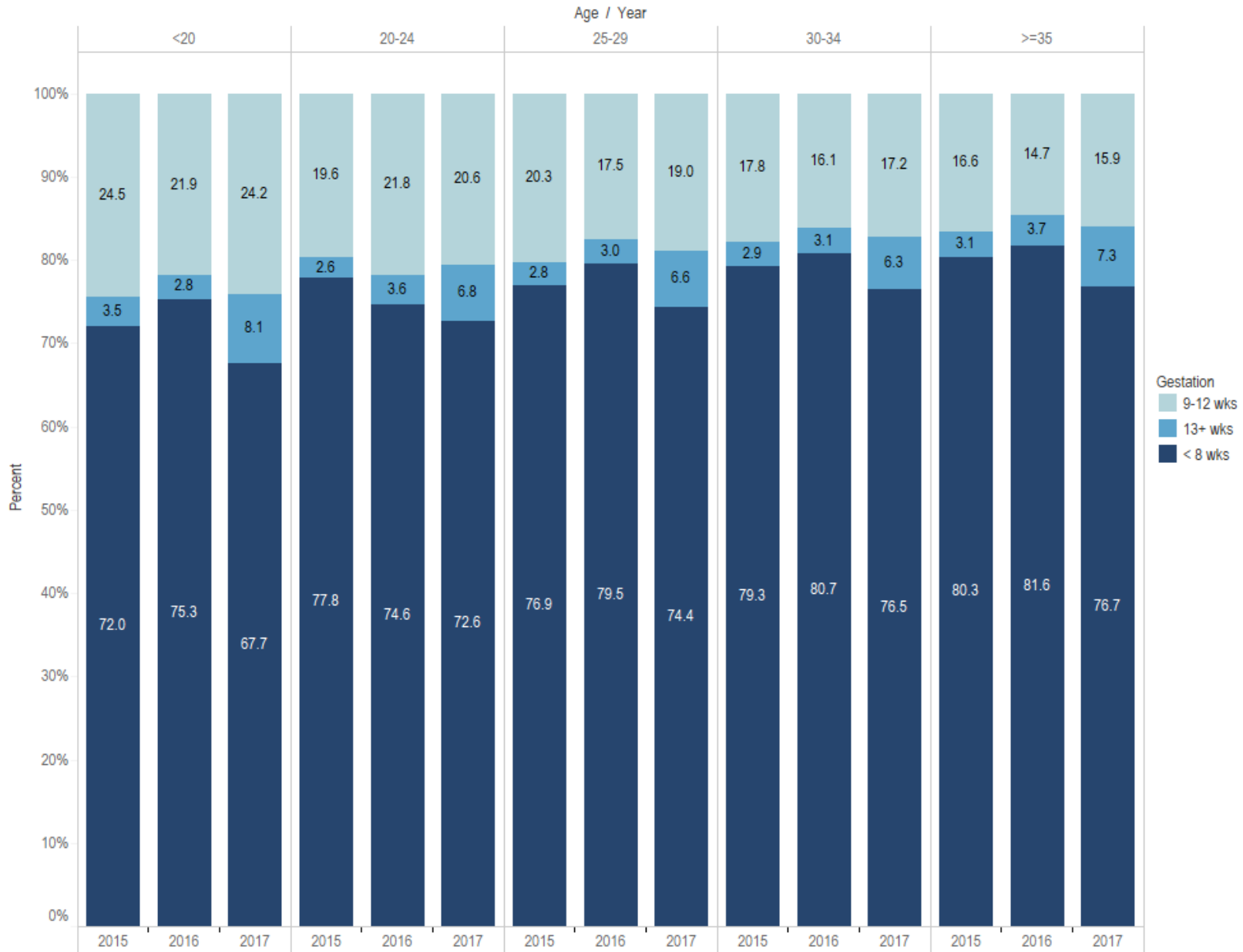


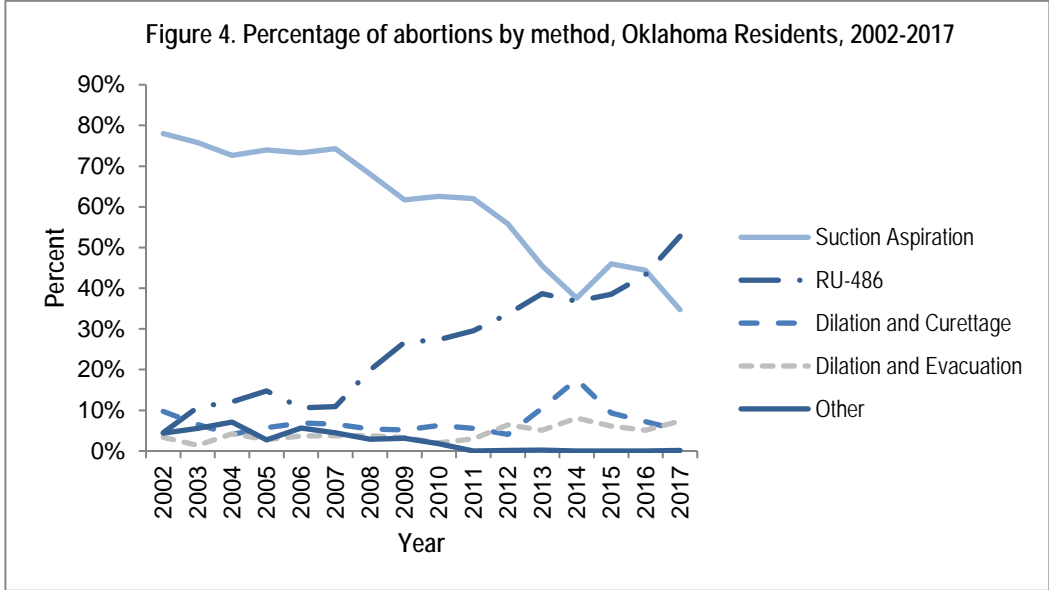
Figure 2. Abortion ratio* by age group for women who obtained a legal abortion, 2002-2017



*Number of abortions per 1,000 live births

Figure 3. Percentage of abortions by timing and age group of women, Oklahoma residents, 2015-2017





2010 Statistical Abortion Reporting Act Requirements Section

This section of the Annual Abortion Report outlines legal induced abortion data collected in accordance with the 2010 Statistical Abortion Reporting Act (the Act) (HB 3284, c. 276, 1. Eff. November, 1 2010). According to the Act, beginning in June 1, 2013, the Oklahoma State Department of Health (OSDH) is required to publish on its website an Annual Abortion Report that includes both new annual data and statistics for all previous calendar years for which abortion-reporting requirements have been in effect. The tables below outline data from all abortions performed in Oklahoma in 2016 (including Oklahoma residents and non-Oklahoma residents).

The Act also requires the OSDH to submit an Annual Judicial Bypass of Abortion Parental Consent Summary Report¹². In 2017, OSDH did not receive any Annual Judicial Bypass Forms. Tables 31 and 32 contain data on Judicial Waivers of parental notice or consent.

To address concerns regarding confidentiality of women obtaining abortions and the stability of percentages, ratios, and rates, any computed statistics were suppressed when the numerator used in the calculation was less than 5. These instances are marked with a double asterisk (**).

Requirement 1: The number of induced abortions performed in the previous calendar year broken down by month and county* in which the abortion was performed.

Table 8. The number of induced abortions performed in 2017, by month

Month	Number of Abortions	Percent
January	358	7.58
February	338	7.16
March	486	10.29
April	379	8.02
May	399	8.45
June	421	8.91
July	391	8.28
August	419	8.87
September	388	8.22
October	386	8.17
November	349	7.39
December	409	8.66
Total	4723	100.0

*There were a total 4723 abortions in the state of Oklahoma in 2017. However, we cannot report abortions by county of occurrence, as this may lead to physician identification.

¹² Title 63 O.S. Section 1-738I

Requirement 2: The number of abortions classified by: a) the state or foreign country of residence of the mother; b) the age, marital status, and race of the mother, and c) the number of years of education of the mother.

Table 9. Selected Demographics of Mother

State of Residence	Number of Abortions	Percent
Alaska (AK)	**	
Arkansas (AR)	104	2.21
California (CA)	**	
Colorado (CO)	**	
Florida (FL)	**	
Georgia (GA)	**	
Hawaii (HI)	**	
Iowa (IA)	**	
Kansas (KS)	35	0.74
Maryland (MD)	**	
Michigan (MI)	**	
Missouri (MO)	42	0.89
New Mexico (NM)	**	
New York (NY)	**	
Oklahoma (OK)	4394	93.37
Oregon (OR)	**	
Texas (TX)	116	2.46
Washington (WA)	**	
Total	4706	100.0
Age of Mother (yrs)	Number of Abortions	Percent
<20	498	10.55
20-24	1456	30.83
25-29	1349	28.57
30-34	827	17.51
>35	592	12.54
Total	4722	100.0
Marital Status (5 groups)	Number of Abortions	Percent
Divorced	274	5.81
Married	811	17.19
Never Married	3447	73.05
Separated	177	3.75
Widowed	10	0.21
Total	4719	100.0
Race of Mother	Number of Abortions	Percent
American Indian or Alaskan Native	239	5.06
Asian/Pacific Islander	146	3.09
Black	966	20.45
Other	646	13.68
White	2723	57.65
Total	4720	100.0
Level of Education	Number of Abortions	Percent
8th grade or less	36	0.76
Some high school	485	10.30
High school graduate or GED completed	1790	38.00
Some college credit	1707	36.24
Bachelor's degree (e.g. BA, AB, BS)	547	11.61
Post grad work	145	3.08
Total	4710	100.0

**Cell is suppressed to maintain confidentiality of surrounding entries

Requirement 3: The number of abortions classified by: a) the number of previous pregnancies of the mother; b) previous live births to the mother, and c) previous miscarriages, and d.) previous induced abortions.

Table 10. Number of abortions by previous pregnancies, previous live births, previous miscarriages, and previous induced abortions

Previous Pregnancies	Number of Abortions	Percent
0	1400	29.65
1	889	18.83
2	885	18.74
3	702	14.87
4	410	8.68
5 to 9	436	9.23
Total	4722	100.0
Previous Live Births		
0	1810	38.34
1	1144	24.23
2	1030	21.82
3	494	10.46
4 or more	243	5.15
Total	4721	100.0
Previous Miscarriages		
0	3893	82.57
1	635	13.47
2	131	2.78
3 or more	56	1.19
Total	4715	100.0
Previous Abortions		
0	3300	69.93
1	950	20.13
2	304	6.44
3 or more	165	3.50
Total	4719	100.0

Requirement 4: The number of abortions by week of gestational age.

Table 11. Gestational Age (weeks)

Gestational age (wks)	Number of Abortions	Percent
Less than 8 wks	3484	73.83
9-10 wks	507	10.74
11-12 wks	400	8.48
13-15 wks	174	3.69
16-20 wks	132	2.80
21 wks	21	0.45
Total	4718	100.0

Requirement 5: The number of abortions performed by each reported method.

Table 12. Abortion Method

Method	Number of Abortions	Percent
Dilation and Curettage	263	5.57
Dilation and Evacuation	359	7.60
RU 486	2495	52.85
Suction Aspiration	1602	33.93
Other	**	**
Total	**	100.0

**Cell is suppressed to maintain confidentiality of surrounding entries

Requirement 6: The number of abortions resulting in an infant born alive; of these, the number of cases in which life sustaining measures were taken; and a statistical summary of the length of survival of such infants.

Table 13. Life Sustaining Measures

Life Sustaining Measures	Number of Abortions	Percent
Infants Born Alive	**	**
<i>Cases Life Sustaining Measures Taken</i>	**	**
<i>Length of Survival of Infants</i>	**	**

**Cell is suppressed to maintain confidentiality of surrounding entries

Requirement 7: The number of cases in which anesthesia was administered to the mother and the number of each type of anesthesia.

Table 14. Anesthesia Usage – Mother

Anesthesia Use	Number of Abortions	Percent
Yes	1882	39.86
<i>Sodium Brevital</i>	1061	97.61
No	2838	60.11
Total	4720	100.0

Requirement 8: The number of cases in which anesthesia was administered to the unborn child, and the number of each type of anesthesia and of each method of administration.

Table 15. Anesthesia Usage – Fetus

Anesthesia Use	Number of Abortions	Percent
Yes	**	
No	4690	99.83
Total	**	100.0

*Based on the gestational age, it is unlikely that Anesthesia was administered to these fetuses

Requirement 9: The number of each reported method of fetal disposal.

Table 16. Fetal Disposal Method

Fetal Disposal Method	Number of Abortions	Percent
Home	941	19.93
Incineration	1059	22.43
Medical waste	2347	49.68
Other*	375	7.94
Total	4722	100.0

*All other listed methods combined for reporting

Requirement 10: The reasons reported for the abortions, and the number of times each reason was cited.

Table 17. Reasons Reported for Abortions

Reason	Frequency
Having a baby would dramatically change the life of the mother:	172
Having a baby would interfere with the education of the mother:	119
Having a baby would interfere with the job/employment/career of the mother:	125
Mother has other children or dependents:	108
Mother cannot afford the child:	147
Mother is unmarried:	97
Mother is a student or planning to be a student:	105
Mother cannot afford child care:	67
Mother cannot afford the basic needs of life:	50
Mother is unemployed:	27
Mother cannot leave job to care for a baby:	41
Mother would have to find a new place to live:	35
Mother does not have enough support from a husband or partner:	32
Husband or partner is unemployed:	8
Mother is currently or temporarily on welfare or public assistance:	10
Mother does not want to be a single mother:	34
Mother is having relationship problems:	23
Mother is not certain of relationship with the father of the child:	41
Partner and mother are unable to or do not want to get married:	19
Mother is not currently in a relationship:	21
The relationship or marriage of the mother may soon break up:	13
Husband or partner is abusive to the mother or her children:	**
Mother has completed her childbearing:	24
Mother is not ready for a, or another, child:	171
Mother does not want people to know that she had sex or became pregnant:	23
Mother does not feel mature enough to raise a, or another, child:	48
Husband or partner wants mother to have an abortion:	**
There may be possible problem affecting the health of the fetus:	**
Physical health of the mother is at risk:	**
Parents want mother to have an abortion:	0
Emotional health of the mother is at risk:	0
Mother suffered from a medical emergency as defined in Section 1-738.1A of Title 63 of the Oklahoma Statutes:	**
Mother suffered from a medical emergency as defined in Section 1-745.2 of Title 63 of the Oklahoma Statutes:	**
Mother wanted a child of a different sex:	0
Abortion is necessary to avert the death of the mother:	**
Pregnancy was a result of forcible rape:	0
Pregnancy was a result of incest:	0
Other	509
<i>Other specified</i>	
Patient was asked why she is seeking an abortion, but she declined to give a reason:	2490

* There are more than 4,394 answers, because the individual could provide multiple answers.

**Cell is suppressed to maintain confidentiality of surrounding entries

Requirement 11: The number of abortions paid for by: a) Private Insurance; b) Public health plan; c) Medicaid; d) Private pay; or e) other.

Table 18. Abortion Payment Method

Payment Method	Number of Abortions	Percent
Private payment	4720	99.96
Private Insurance	0	
Medicaid	**	
Other	0	
Total	**	100.0

**Cell is suppressed to maintain confidentiality of surrounding entries

Requirement 12: The number of abortions in which medical health insurance coverage was under: a) a fee-for-service insurance company; b) a managed care company, or c) other

Table 19. Type of Medical Health Insurance

Payment Method	Number of Abortions	Percent
Fee-for-Service	**	
Managed Care	**	
Other	0	

**Cell is suppressed to maintain confidentiality of surrounding entries

Requirement 13: A statistical summary of the fees collected

Table 20. Summary of Fees

Summary of Fees	Number of Abortions	Percent
\$0-500	**	**
\$501-600	2682	**
\$601-700	1557	**
\$701-800	207	**
\$800+	270	**
Total	**	100.0

**Cell is suppressed to maintain confidentiality of surrounding entries

Requirement 14: Specialty area of medicine of the physician

Table 21. Physician Specialty Area

Physician specialty area	Number of Abortions	Percent
Obstetrics-Gynecology	3318	70.30
General Practice	1402	29.70
Total	4720	100

Requirement 15: *The number of abortions in which ultrasound equipment was used before, during, or after the abortion, and the number of times vaginal ultrasound, abdominal ultrasound, or both were used in each of the three circumstances.*

Table 22. Ultrasound Equipment Usage

Ultrasound Equipment Usage	Number of Abortions	Percent
Before Abortion:	4720	99.98
During Abortion:	559	11.84
After Abortion:	556	11.78
Type of Ultrasound used before abortion:		
Abdominal	1264	26.78
Vaginal	3444	72.97
Both Vaginal/Abdominal	12	0.25
Total	4720	100.0
Type of Ultrasound used during abortion:		
Vaginal	**	**
Abdominal	555	99.28
Both Vaginal/Abdominal	**	**
Total	559	100.0
Type of Ultrasound used after abortion:		
Vaginal	**	**
Abdominal	555	99.28
Both Vaginal/Abdominal	**	**
Total	556	100.0

Requirement 16: *The number of abortions before which an ultrasound was performed by: a) the physician performing the abortion, b) a physician other than the physician performing the abortion, or c) other.*

Table 23. Ultrasound Performed by

The number of abortions before which an ultrasound was performed by:	Number of Abortions	Percent
The physician performing the abortion	2637	55.89
A physician other than the physician performing the abortion	**	**
Other	2078	44.04
Total	**	100.0

**Cell is suppressed to maintain confidentiality of surrounding entries

Requirement 17: The number of abortions resulting in reported complications, and of those, how many were reported by the physician who performed the abortion, and how many were reported by another physician, the types of reported complications, and the number of each type based on data which shall be compiled and transmitted to the State Department of Health by the State Board of Medical Licensure and Supervision and the State Board of Osteopathic Examiners.

Table 24. Complications Reported by

The number of abortions resulting in complications:	Frequency	Percent
Reported by physician who performed abortion	29	93.6
Another physician	**	
Types of Complications*		
<i>Failed termination of pregnancy (continued viable pregnancy)</i>	22	71.0
<i>Heavy bleeding/hemorrhage with estimated blood loss of greater than or equal to 500cc</i>	**	**
<i>Other</i>	7	22.6

*More than one complication can be reported for the same event

**Cell is suppressed to maintain confidentiality of surrounding entries

Requirement 18: The number of abortions resulting in the reported death of the mother.

There were no reported deaths of mother for abortions for the 2017 reporting period.

Requirement 19: The number of females to whom the physician provided the information in subparagraph a of paragraph 1 of subsection B of Section 1-738.2 of Title 63 of the Oklahoma Statutes; of that number, the number provided by telephone and the number provided in person; and of each of those numbers, the number provided in the capacity of a referring physician and the number provided in the capacity of a physician who is to perform the abortion.

Table 25. Informed Consent: Paragraph 1, Subsection B

Was the information required by paragraph 1 of subsection B of Section 1-738.2 of Title 63 of the Oklahoma Statutes provided to the mother?	Number of Abortions	Percent
Yes	4711	99.77
No	11	0.23
Total	4722	100
If yes, was it provided:		
In person:	873	18.53
By telephone:	3847	81.66
For telephone*, was it provided by:		
A referring physician:	0	
The physician performing the abortion:	**	**
An agent of a referring physician:	**	**
An agent of the physician performing the abortion:	3837	99.74
For in person*, was it provided by:		
A referring physician:	**	**
The physician performing the abortion:	**	**
An agent of a referring physician:	7	0.80
An agent of the physician performing the abortion:	868	99.42

* Information may have been provided by more than one person

** Cell is suppressed to maintain confidentiality of surrounding entries

Requirement 20: The number of females to whom physicians or agents of physicians provided the information in paragraph 2 of subsection B of Section 1-738.2 of Title 63 of the Oklahoma Statutes; of that number, the number provided by telephone and the number provided in person; of each of those numbers, the number provided in the capacity of a referring physician and the number provided in the capacity of a physician who is to perform the abortion; and of each of those numbers, the number provided by the physician and the number provided by an agent of the physician.

Table 26. Informed Consent: Paragraph 2, Subsection B

Was the information required by paragraph 2 of subsection B of Section 1-738.2 of Title 63 of the Oklahoma Statutes provided to the mother?	Number of Abortions	Percent
Yes	4709	99.70
No	14	0.30
Total	4723	100
If yes, was it provided:		
In person:	872	18.52
By telephone:	3845	81.65
For telephone*, was it provided by:		
A referring physician:	**	**
The physician performing the abortion:	**	**
An agent of a referring physician:	**	**
An agent of the physician performing the abortion:	3837	99.80
For in person*, was it provided by:		
A referring physician:	**	**
The physician performing the abortion:	**	**
An agent of a referring physician:	0	0
An agent of the physician performing the abortion:	867	99.43

* Information may have been provided by more than one person

** Cell is suppressed to maintain confidentiality of surrounding entries

Requirement 21: *The number of females who availed themselves of the opportunity to have a copy of the printed information described in Section 1-738.3 of Title 63 of the Oklahoma Statutes mailed to them; and of that number, the number who, based on the submitted reports, did and did not obtain an abortion.*

Table 27: Printed Materials Mailed

Did the mother avail herself of the opportunity to have the printed materials described in Section 1738.3 of Title 63 of the Oklahoma Statutes mailed to her?	Frequency	Percent
Yes	1314	27.82
No	3409	72.18
Total	4723	100
If yes, the number of women who did or did not have an abortion:		
Did have an abortion:	1314	100.0
Did not have an abortion:	0	
Total	1314	100.0

Requirement 22: *The number of abortions performed by the physician in which information otherwise required to be provided at least twenty-four (24) hours before the abortion was not so provided because an immediate abortion was necessary to avert the death of the female, and the number of abortions in which such information was not so provided because a delay would create serious risk of substantial and irreversible impairment of a major bodily function.*

Table 28: Informed Consent and Medical Emergencies

Were the informed consent requirements of subsection B of Section 1-738.2 of Title 63 of the Oklahoma Statutes dispensed with because of a medical emergency necessitating an immediate abortion:	Number of Abortions	Percent
To avert death	**	
To avert substantial and irreversible impairment of a major bodily function arising from continued pregnancy	**	
Not Applicable	**	
Total	**	

** Cell is suppressed to maintain confidentiality of surrounding entries

Requirement 23: *The number of females to whom physicians or their agents provided the information described in subsection A of Section 1-738.8 of Title 63 of the Oklahoma Statutes; of that number: a) the number provided by telephone and the number provided in person; and of each of those numbers, the number provided in the capacity of a referring physician and the number provided in the capacity of a physician who is to perform the abortion, or by the agent of such physician, and b) the number of females who availed themselves of the opportunity to be given or mailed the materials described in Section 1-738.10 of Title 63 of the Oklahoma Statutes, and the number who did not; and of each of those numbers, the number who, to the best of the information and belief of the reporting physician, went on to obtain the abortion.*

No abortions were reported that met this requirement.

Requirement 24: *The number of females to whom the information described in subsection A of Section 1-738.8 of Title 63 of the Oklahoma Statutes would have had to be provided but for a medical emergency determination; of that number, the number for whom an immediate abortion was necessary to avert the death of the female, and the number for whom a delay would have created serious risk of substantial and irreversible impairment of a major bodily function.*

No abortions were reported that met this requirement.

Requirement 25: *The number of abortions performed within the scope of employment of Oklahoma state employees and employees of an agency or political subdivision of the state, the number of abortions performed with the use of public institutions, facilities, equipment, or other physical assets owned, leased, or controlled by this state, its agencies, or political subdivisions, and for each category: a. the number of abortions reported as necessary to save the life of the mother, the life-endangering conditions identified, and the number of each such condition reported, b. the number of abortions reported from pregnancies resulting from forcible rape, the number of such rapes reported to law enforcement authorities, general categories of law enforcement authorities to whom reports were made and the number made to each category, and a statistical summary of the length of time between the dates of reporting to law enforcement authorities and the dates of the abortions, and c. the number of abortions reported from pregnancies resulting from incest committed against a minor, the number of perpetrators of incest in such cases reported to law enforcement authorities, general categories of law enforcement authorities to whom reports were made and the number made to each category, and a statistical summary of the length of time between the dates of reporting to law enforcement authorities and the dates of the abortions.*

Table 29. Abortion performed in the scope of a State Employee/Agency or in a Public Facility

State Employee/Agency	Number of Abortions	Percent
Yes	**	
<i>Abortion performed to save mother's life</i>	**	
<i>Pregnancy as a result of forcible rape</i>	**	
<i>Pregnancies resulting from incest committed against a minor</i>	<i>Not Applicable</i>	
<i>Statistical Summary of length of time between the dates of reporting to law enforcement and the dates of the abortion</i>	<i>Not Applicable</i>	
Public Facility/Equipment	Number of Abortions	Percent
Yes	**	
<i>Abortion performed to save mother's life</i>	**	
<i>Pregnancy as a result of forcible rape</i>	**	
<i>Pregnancies resulting from incest committed against a minor</i>	<i>Not Applicable</i>	
<i>Statistical Summary of length of time between the dates of reporting to law enforcement and the dates of the abortion</i>	<i>Not Applicable</i>	

**Cell is suppressed to maintain confidentiality of surrounding entries

Requirement 26: The number of females to a parent of whom the physician provided notice as required by Section 1-740.2 of Title 63 of the Oklahoma Statutes; of that number, the number provided personally as described in that section, and the number provided by mail as described in that section, and of each of those numbers, the number of females who, to the best of the information and belief of the reporting physician, went on to obtain the abortion.

Table 30: Parental Notice or Consent

The number of females to a parent of whom the physician provided notice as required by Section 1-740.2 of this title	Frequency	Percent
Yes	121	99.18
No	**	
Total	**	100.0
If yes, was it provided:		
In-person	50	55.56
By Mail	70	88.61
If the notice was provided in-person, did the female go on to have an abortion?		
Did have an abortion	50	100.0
Did not have an abortion	0	0.0
Total	50	100.0
If the notice was provided by mail, did the female go on to have an abortion?		
Did have an abortion	70	100.0
Did not have an abortion	0	0.0
Total	70	100.0

**Cell is suppressed to maintain confidentiality of surrounding entries

Requirement 27: The number of females upon whom the physician performed an abortion without the notice to or consent of the parent of the minor required by Section 1-740.2 of Title 63 of the Oklahoma Statutes; of that number, the number who were emancipated minors and the number who suffered from a medical emergency, and of the latter, the number of cases in which a parent was notified subsequently and the number of cases in which a judicial waiver was obtained. In the case of medical emergencies in which a parent was informed subsequently, a statistical summary of the period of time elapsed before notification.

Fewer than 5 abortions were performed meeting this requirement.

Requirements 28, 29 & 30: The number of abortions performed after receiving judicial authorization to do so without parental notice and consent (28); The number of abortions performed on minors after judicial authorizations were granted because of a finding that the minor girl was mature and capable of giving informed consent (29); and; The number of abortions performed on minors after judicial authorizations were granted because of a finding that the performance of the abortion without parental notification and consent was in the best interest of the minor (30).

Fewer than 5 abortions were performed meeting this requirement.

Requirement 31-34: The number of abortions performed after which the remains of the fetus after the abortion were examined to ensure that all such remains were evacuated from the mother's body (31); The number of male children aborted and female children aborted, as determined from the examination of fetal remains after abortion (32); The number of male children aborted and female children aborted, as determined by any method other than those reported in paragraph 32 of this subsection (33); The number of instances in which the mother was informed prior to the abortion that the child to be aborted was a female (34).

Table 31. Fetal Examination

Fetal Examination	Number of Abortions	Percent
The number of abortions performed after which the remains of the fetus after the abortion were examined to ensure that all such remains were evacuated from the mother's body:		
Yes	1171	28.48
No	2940	71.50
Total	4111	100.0
The number of male children aborted and female children aborted, as determined from the examination of fetal remains after abortion		
Male	**	
Female	0	
Total		100.0
The number of male children aborted and female children aborted, as determined by any method other than those reported in paragraph 32 of this subsection		
Male	**	
Female	0	
Total		100.0
The number of instances in which the mother was informed prior to the abortion that the child to be aborted was a female:		
Instances	0	

**Cell is suppressed to maintain confidentiality of surrounding entries

Requirement 35 & 36: The number of abortions performed without surgery but rather as the result of the administration of chemicals (35); The number of abortions performed as reported in paragraph 35 of this subsection, in which the physician was present in the same room as the woman to whom the chemicals were administered at the time any such chemicals were first administered (36).

Table 32. Chemical Administration

Chemical Administration*	Number of Abortions
The number of abortions performed without surgery but rather as the result of the administration of chemicals (Total)	2495
The number of abortions performed as reported in paragraph 35 of this subsection, in which the physician was present in the same room as the woman to whom the chemicals were administered at the time any such chemicals were first administered:	1689

Requirement 37: The number of abortions performed for each hospital at which the abortionist had hospital privileges at the time of the abortion.

Table 33. Hospital Privileges

Hospital Privileges	Number of Abortions	Percent
The number of abortions performed for each hospital at which the abortionist had hospital privileges at the time of the abortion:		
Yes	**	
No	**	
Total	4719	100.0

Requirements 38-43: The number of abortions performed at which ultrasound equipment was used before the abortion (38); The number of abortions reported in paragraph 38 of this subsection, during which the mother was under the effect of anesthesia at the time of the ultrasound (39); The number of abortions performed at which ultrasound equipment was used during the abortion (40); The number of abortions reported in paragraph 40 of this subsection, during which the mother was under the effect of anesthesia at the time of the ultrasound (41); The number of abortions performed at which ultrasound equipment was used after the abortion (42); The number of abortions reported in paragraph 42 of this subsection, during which the mother was under the effect of anesthesia at the time of the ultrasound (43).

Table 34. Ultrasound Equipment Usage

Ultrasound Equipment Usage	Number of Abortions	Percent
Ultrasound Equipment Used Before Abortion (Total):	4720	100.0
Ultrasound Equipment Used During Abortion (Total):	559	
Ultrasound Equipment Used After Abortion (Total):	556	
Mother under anesthesia at the time of the ultrasound:		
Yes	**	
No	4722	99.9
Not Applicable	**	

Requirement 44: The mean gestational age of the fetus at the time of the abortion, as determined by ultrasounds reported.

Table 35. Mean Gestational Age of Fetus, as determined by the ultrasound

N	Mean (wks)	Standard Deviation
4719	7.39	12.72

Requirement 45: The number of abortions for which no determination of probable postfertilization age was made as required by Section 1-745.5 of this title.

Table 36: Probable Postfertilization Age

Probable Postfertilization Age	Number of Abortions	Percent
The number of abortions for which a probable postfertilization age determination was made:	3186	67.47
The number of abortions for which probable postfertilization age was not made:	5	0.11
Not Applicable	1531	32.42
Total	4722	100.0

Requirement 46: The number of abortions in which the pregnant woman was told that it may be possible to make the embryonic or fetal heartbeat of the unborn child audible for the pregnant woman to hear; the number of abortions in which the pregnant woman was asked if she would like to hear the heartbeat; and the number of abortions in which the embryonic or fetal heartbeat of the unborn child was made audible for the pregnant woman to hear, using a Doppler fetal heart rate monitor.

Table 37: Fetal Heartbeat

Fetal Heartbeat	Number of Abortions	Percent
The number of abortions in which the pregnant woman was told that it may be possible to make the embryonic or fetal heartbeat of the unborn child audible		
Yes	106	2.55
No	3426	82.30
Not Applicable	631	15.16
The number of abortions in which the pregnant woman was asked if she would like to hear the heartbeat		
Yes	3284	78.83
No	77	1.85
Not Applicable	805	19.32
The number of abortions in which the embryonic or fetal heartbeat of the unborn child was made audible for the pregnant woman to hear		
Yes	3549	85.17
No	52	1.25
Not Applicable	566	13.58

Acknowledgments

Tom Bates, JD
Interim Commissioner of Health

Derek Pate, DrPH
Director, Center for Health Statistics

Authors

Evaren Page, MPH
Staff Analyst, Center for Health Statistics

Charmel Holland, MPH, MSW
Community Analyst, Center for Health Statistics

Ryan Webb, MPH
Administrative Program Manager, Quality Assurance & Data Management
Center for Health Statistics

The Oklahoma State Department of Health (OSDH) is an equal opportunity employer and provider. This publication, issued by the OSDH, was authorized by Tom Bates, JD, Interim Commissioner of Health. A digital file has been deposited with the Publications Clearinghouse of the Oklahoma Department of Libraries and is available for download at www.health.ok.gov. June 2018

