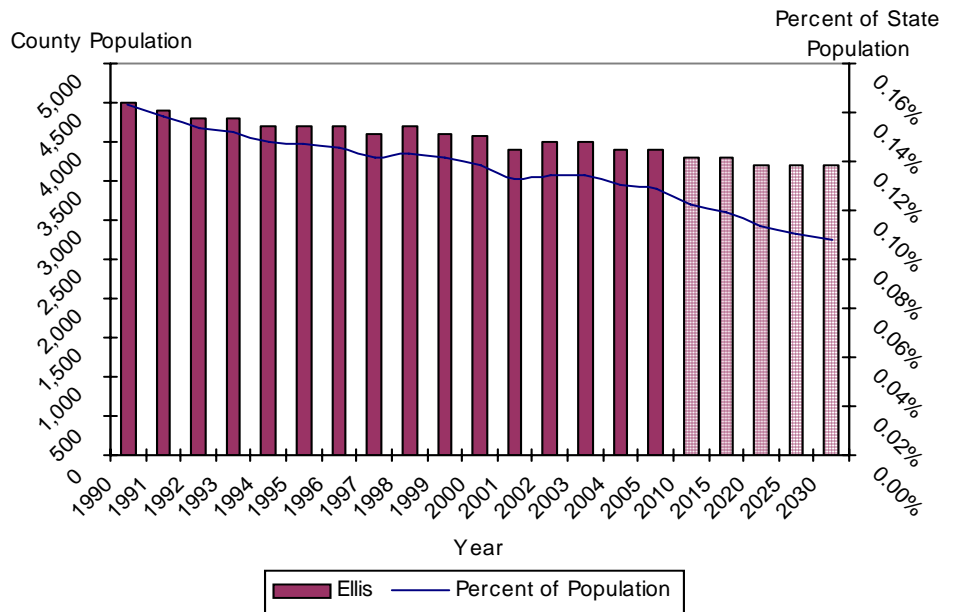


Demographics

* U.S. Census Bureau

- Population estimates
 - 9% decrease from 1990 to 2000 (4,497 to 4,075)
 - 4% decrease from 2000 to 2004
 - Ranked 64th for growth in state
- 2000 Census
- Hispanic/Latino ethnicity = 3%
- Race
 - Whites = 96%
 - Native Americans = 1%
 - Blacks = 0%
 - Other/Multiple = 2%
- Age
 - Under 5 = 5%
 - Over 64 = 22%
 - Median age = 45.3 years
- Housing units
 - Occupied = 1,769 (82%)
 - Vacant = 377 (18%)
- Disability (ages 21 to 64) = 23.7%
 - national = 19.2% state = 21.5%
- Individuals below poverty = 12.5%
 - national = 12.4% state = 14.7%

Ellis County Population Growth with Projections



* *Vital Statistics, Health Care Information Systems, OSDH & Centers for Disease Control*

Top 10 Leading Causes of Death

The top 10 leading causes of death table on the next page displays a broad picture of the causes of death in Ellis County. Since many health-related issues are unique to specific ages, this table provides causes of death by age group at a glance. The causes of death that are present across almost every age group have been highlighted. From 1983 to 1993 heart disease killed 281 people in Ellis County and is still the

leading cause of death among all age groups. According to the Centers for Disease Control, almost \$400,000 is spent on each heart disease-related death. With an average of 20.2 deaths a year, heart disease accounts for over \$7 million a year in medical costs in Ellis

Heart disease accounts for over \$7 million a year in medical costs in Ellis County.

County.

Alzheimer's disease and the complications associated with it have increased from the 8th ranked cause of death (1983-1993) to the 6th ranked cause of death in persons 65 and older accounting for a 133% increase in deaths.

* *Behavioral Risk Factor Surveillance System, Health Care Information System, OSDH & Health Affairs Journal, R. Strum, 2002*

Nutrition and Obesity

No Data Available At This Time

Top 10 Causes of Death by Age Group Ellis County 1993-2003

RANK	0-4	05-14	15-24	25-34	35-44	45-54	55-64	65+	All Ages
1	PERINATAL PERIOD 2		UNINTENT. INJURY 4	UNINTENT. INJURY 3	UNINTENT. INJURY 5	CANCER 5	HEART DISEASE 21	HEART DISEASE 195	HEART DISEASE 222
2	CANCER 1			CANCER 1	CANCER 2	HEART DISEASE 4	CANCER 20	CANCER 100	CANCER 129
3	CONGENITAL ANOMALIES 1			HOMICIDE/LEGAL 1	HEART DISEASE 2	UNINTENT. INJURY 4	NON-CANCEROUS TUMOR 2	STROKE 56	STROKE 57
4	UNINTENT. INJURY 1				OTHER 1	DIABETES MELLITUS 3	KIDNEY DISEASE 2	INFLUENZA/PNEUMONIA 30	INFLUENZA/PNEUMONIA 31
5						BRONCHITIS/EMPHYSEMA/ASTHMA 1	EIGHT CAUSES TIED 1	BRONCHITIS/EMPHYSEMA/ASTHMA 19	UNINTENT. INJURY 31
6						OTHER 4		ALZHEIMER'S DISEASE 14	BRONCHITIS/EMPHYSEMA/ASTHMA 21
7								DIABETES MELLITUS 14	DIABETES MELLITUS 18
8								UNINTENT. INJURY 13	ALZHEIMER'S DISEASE 14
9								ATHERO-SCLEROSIS 9	KIDNEY DISEASE 11
10								KIDNEY DISEASE 9	ATHERO-SCLEROSIS 9

Data source: *Vital Statistics*, Health Care Information Division, Oklahoma State Department of Health
 Produced by: Injury Prevention Service, Oklahoma State Department of Health

Injury and Violence

Across the nation and the state of Oklahoma, unintentional and violence-related injuries are on the rise. Unintentional injuries account for the 4th leading cause of death in the United States and the 5th leading cause of death in Oklahoma from 1999-2002. For persons ages 1 to 44 in Oklahoma, unintentional injuries are the leading cause of death.

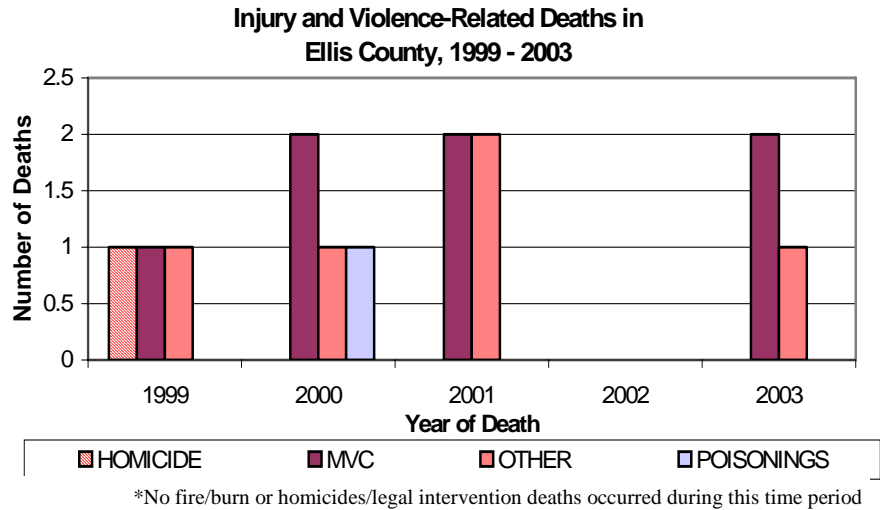
This trend does not change much in Ellis County. Unintentional injuries are the leading cause of death from ages 15 to 44.

It is estimated that for every motor vehicle-related death \$1.1 million in economic costs are incurred. For Ellis County which has an average of 1.4 motor vehicle-related deaths a year,

that translates to almost \$2 million a year.

Violence-related injuries (homicide

and suicide) in Ellis County are ranked in the top 10 in one of the eight age groups (see Top 10 list on page 3).



Tobacco Use

No Data Available At This Time

Physical Activity, Wellness and Diabetes

No Data Available At This Time

Teen Pregnancy

While births to teen mothers (age 15 to 19) are on the decline in both the U.S. and Oklahoma, Oklahoma has moved up in rank from 13th to 8th in the country. In 1993 the rate of teen births

was 60.0 (per 1,000 15-19 year old females) in the U.S. and 66.6 in Oklahoma. In 2003, the rate decreased to 41.7 in the U.S. and 55.8 in Oklahoma, a decrease of

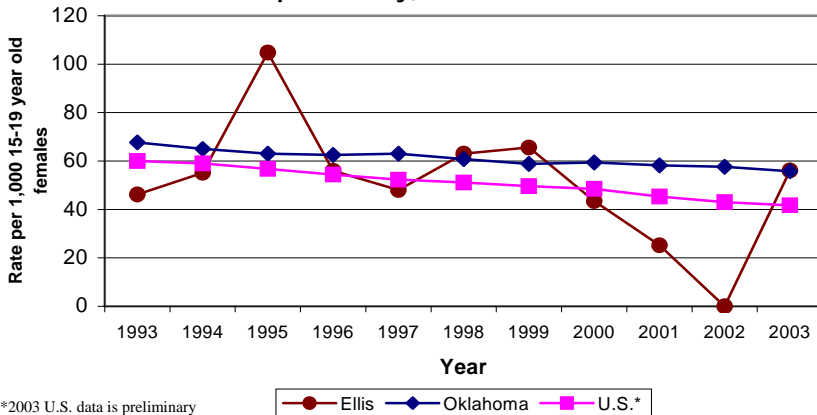
31% and 7%, respectively.

Children of teen mothers are more likely to display poor health and social outcomes than those of older mothers, such as premature birth, low birth weight, higher rates of abuse and neglect, and more likely to go to foster care or do poorly in school. Additionally, births to teen mothers accumulate \$3,200 a year for each teenage birth, which is passed on to citizens.

According to Oklahoma Vital Statistics, Ellis County had a teen birth rate of 56.1 in 2003 which was a #VALUE! decrease from 2002 (.) and a 21% increase since 1993 (46.2).

With an average of 6 births per year, teen pregnancy costs the citizens of Ellis County \$19,200.00 a year.

Rate of Live Births to Teen Mothers, Ages 15-19, Harper County, 1993 to 2003



*2003 U.S. data is preliminary

Note: 2 births to a mother 10-14 years of age occurred during the 11 year period.

Poverty

* U.S. Census Bureau

As the nation advances in technology and the ability to detect and prevent disease at an earlier stage, persons that are impoverished carry a large burden of poor health outcomes. Higher incidences of unplanned or unwanted pregnancies, teen pregnancy, inade-

quate prenatal care, higher rates of low-birth-weight babies, infant deaths and low immunization rates are all associated with poverty along with a myriad of other adverse health outcomes.

According to the 2000 census, 12.5% of persons in Ellis County

for whom poverty status was known had an income below what was needed to live at the federal poverty level. Ellis County is 15% below the state (14.7%) and 1% above the nation (12.4%) for persons with incomes below the federal poverty level.

Income to Poverty Ratio, Ellis County, 2000 Census

Poverty level	Total	50% below	51% to 99% below	poverty level to 149% above	150% to 199% above	200% and above
Population	4,009	205	296	495	531	2,482
Cumulative Population		205	501	996	1,527	4,009
% of Total	100.0%	5.1%	7.4%	12.3%	13.2%	61.9%
Cumulative %		5.1%	12.5%	24.8%	38.1%	100.0%

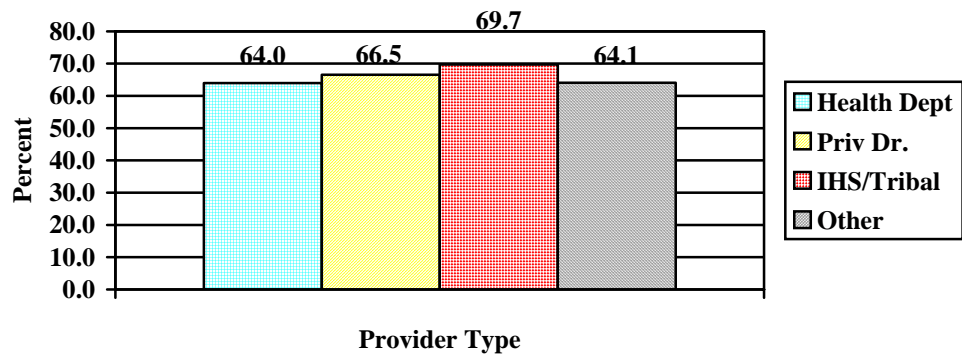
OK By One - State Immunization Data

* 2 Year-old Immunization Survey, Immunization Service, OSDH

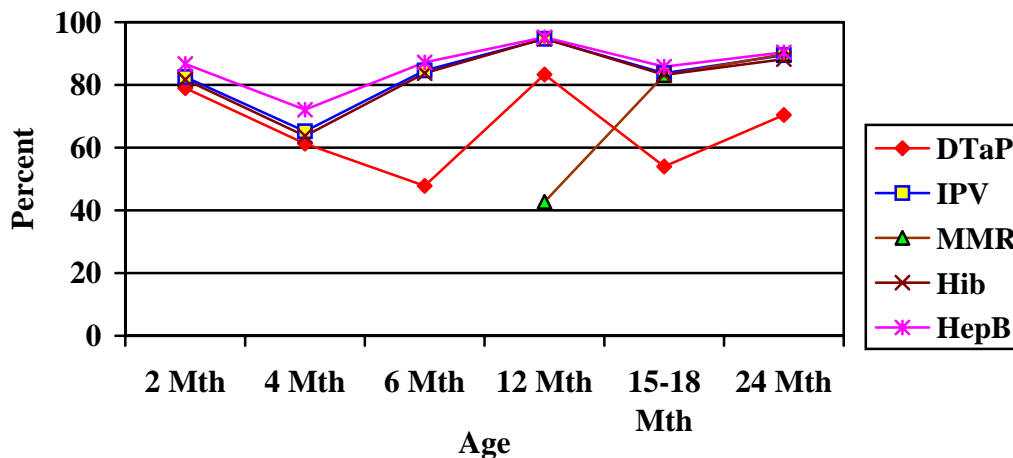
2003-04 Immunization Coverage Rates



4:3:1:3:3 Coverage by Location of Shots, Oklahoma, 2004



Oklahoma Children On Schedule by Antigen, 2004

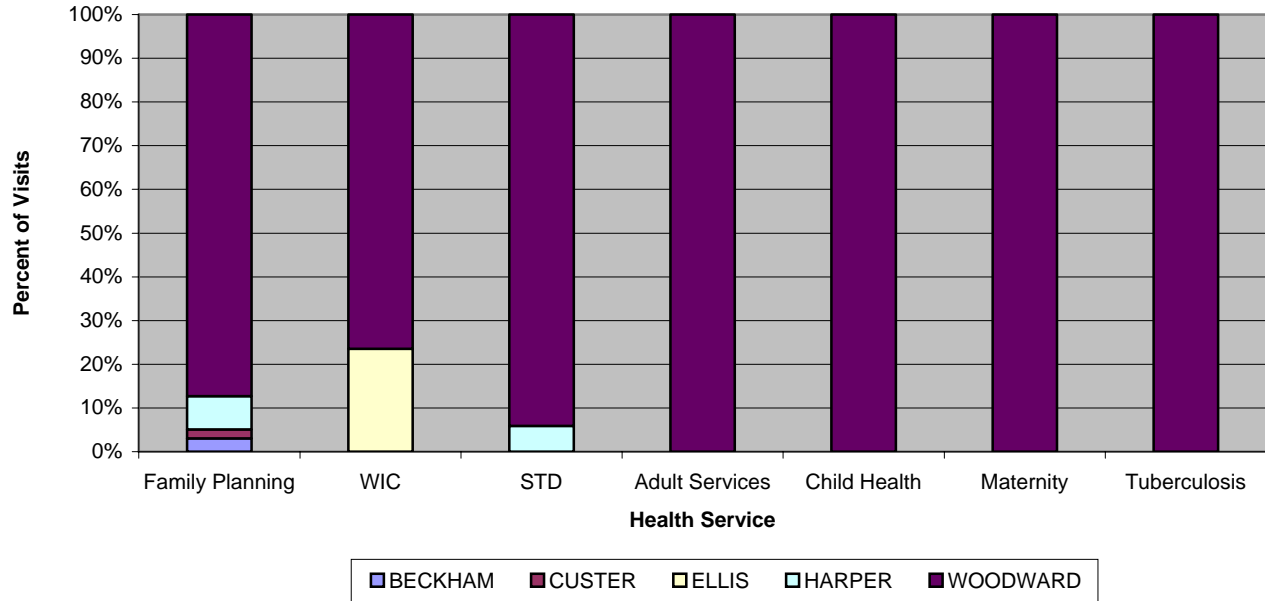


**Note: County level data will be available soon.

County Health Department Usage

* PHOCIS, Community Health Services, OSDH

Health Services Sought in Surrounding Counties by Ellis County Residents



Health Care Costs Summary

Cardiovascular Disease (Heart Disease)

- Average 20 deaths a year
- \$369,476.69 per death
- Total— \$7,389,533.80 a year

Obesity

- Data Not Available At This Time

Motor Vehicle-Related Injury Death

- Average 1.4 deaths per year
- \$1,120,000.00 in economic costs per death
- Total—\$1,568,000.00 a year

Tobacco Use

- Data Not Available At This Time

Diabetes

- Data Not Available At This Time

Teen Pregnancy

- Average of 6 births to teen mothers per year
- \$3,200.00 in costs for each birth a year
- Total— \$19,200.00 a year



Grand Total for Ellis County:

\$8,976,733.80



**OKLAHOMA STATE
DEPARTMENT OF HEALTH**

Community Health Services
Community Development Service

1000 NE 10th St, Room 508
Oklahoma City, OK 73117
Phone: 405-271-6127
Fax: 405-271-1225
Email: miriamm@health.ok.gov

Looking Back to Move Forward

Report compiled by:
Miriam McGaugh, M.S.
Community Development Service, OSDH
Kelly Baker, MPH
Health Care Information Systems, OSDH

The Oklahoma Turning Point Initiative is public health improvement in action. The success of the Turning Point process involves a partnership between the state and county departments of health, local communities, and policy-makers. The Oklahoma Turning point engine is fueled by a community-based decision making process whereby local communities tap into the capacities, strengths, and vision of their citizens to create and promote positive, sustainable changes in the public health system, and the public's health.

Oklahoma Turning POINT



*Oklahoma Community Partners
in Public Health Innovation*