

- 1 • Overall the Department is forecasted to spend 97.45% of its budget.
- 2 • Community and Family Health Services and Protective Health Services have “Green Lights” as they
- 3 have had for the last several months.
- 4 • Health Improvement Services currently has a “Red Light” due to a recently budgeted carryover of
- 5 \$1.9 million. These funds are dedicated to access to care, primarily for expanding and sustaining
- 6 Federally Qualified Health Centers. This funding will be used to continue to study barriers to access
- 7 to care in Oklahoma and identify solutions in accordance with OHIP Access to Care action plan. As
- 8 these plans are formalized, the “Red Light” should improve.
- 9 • Prevention and Preparedness Services and Public Health Infrastructure have “Yellow Lights” with
- 10 performance rates of 93.53% and 94.64%, respectively. These have not significantly changed since
- 11 the December report but are expected to improve over the next six months.
- 12 • All expenditures will be monitored closely and adjustments in spending will be made as needed to
- 13 ensure optimal budget performance for the Department.

14
15 Dr. Woodson directed attention to the below graph reminding the Board of the budget process and
16 timeline.

THE BUDGET CYCLE													
STATE FISCAL YEAR IS JULY 1 - JUNE 30													
	July	Aug	Sept	Oct	Nov	Dec	Jan	Feb	Mar	Apr	May	June	
1. Agencies review program needs and prepare Budget Requests and Strategic Plans.	July 1 - Oct 1												
2. Agencies submit Budget Requests. Strategic Plans are submitted every even numbered year.				Oct 1									
3. Office of State Finance reviews Budget Requests and Strategic Plans for development of the Executive Budget Book.				Oct - Nov									
4. December Equalization Board Meeting - expenditure authority is the approved basis for the Executive Budget.						Dec							
5. Submission of Executive Budget to the Legislature. Legislative session begins.								Feb					
6. Feb Equalization Board - expenditure authority is approved basis for Legislative Appropriations and Governor's action								Feb					
7. Legislature reviews agency budgets and finalizes appropriation recommendations.								Feb - May					
8. Governor's action on Appropriation Bills								Feb - Mid-June					
9. June Equalization Board Meeting - revenue and expenditure authority adjusted to incorporate statutory changes.												June	
10. Budget Work Programs submitted to the Office of State Finance for approval by July 1	July 1 FY 2006												

17
18 The report concluded.

19
20 **Accountability, Ethics & Audit Committee**

21 The Accountability, Ethics, & Audit Committee met with Lloyd Smith, and Dan Durocher. Mr. Smith
22 reported that there are no known significant issues to report at this time. Lloyd Smith was asked to
23 provide an overview of the audit processes leading to the development of the proposed annual audit plan.
24 The report concluded.

OSDH INTERNAL AUDIT

Overview of the 2013 Audit Plan and Risk Analysis

Lloyd L. Smith, CPA
Chief of Internal Audit
January 8, 2013



INTERNAL AUDIT'S MISSION

- Independently examine and evaluate the ongoing control processes of the Agency,
- Provide counsel and recommendations for improvement,
- Promote effective control at reasonable cost,
- Assist management in achieving it's strategic vision.



SCOPE OF WORK

- The scope of internal audit encompasses the examination and evaluation of the adequacy and effectiveness of the Agency's system of internal control and the quality of performance in carrying out assigned responsibilities.



Chief of Internal Audit Responsibility includes:

- Develop and implement an annual audit plan based on risk assessment.
- Maintain a professional audit staff with sufficient knowledge, skills and experience to meet the requirements of it's mission



Responsibility Continued:

- Furnish management with reports to evaluate the operations
- Offer advisory services to management that will allow best use of Agency resources.
- Investigate suspected fraudulent activities within the organization.



Responsibility Continued:

- Provide sufficient oversight of the fiscal management of and compliance with the Federal and state requirements for the programs administered by the Agency.
- Serve as a liaison with Federal, State and other external auditing entities.



Purpose of the Audit Plan

The annual audit plan is used as a blueprint for maximizing audit coverage, optimally using audit resources and providing the greatest benefit to agency management and Oklahoma taxpayers.



Audit Plan Development

The Audit Plan is developed annually utilizing a risk assessment approach with input from:

- Deputy commissioners
- Finance Coordinators
- Audit Committee
- Internal Audit Staff



The Risk Analysis

For Fiscal Year 2013, Internal Audit has identified 95 programs and/or audit processes that generate audit risk to the agency.



The Risk Analysis

The risk analysis is a comprehensive, numerically weighted scoring process that uses 9 key elements/parameters that effect the degree of audit risk.



Area's of Audit Risk

The following 9 parameters are assessed and provided a numeric score by each deputy area's most knowledgeable staff and include:

- Federal Requirements
- State Statutes
- Dollar or Transaction Volume



Area's of Audit Risk

- Adequacy & Effectiveness of the system of monitoring & oversight & supervisory controls
- Previous audit findings and/or questioned costs
- History of Fraud or abuse in this program or process



Area's of Audit Risk

- Complexity or volatility of activities
- Competency of staff responsible
- Staff physically handle cash or other assets



Audit Risk Summary

Based on the numeric scores of those parameters, a list of highest to lowest risk programs and processes are prepared.



Audit Plan Draft

- That list is evaluated, analyzed and re-sorted numerous ways to develop a final summary of high risk programs and processes recommended for review as the proposed Agency Audit Plan.
- Those documents are before you today for consideration. 7



1 Martha Burger inquired as to whether or not the work of the Internal Audit Unit supplements the work of
2 the State Auditor or does the State Auditor rely on the work of the Internal Audit unit and those internal
3 processes in place. Mr. Lloyd Smith responded that all OSDH audits are sent to the State Auditor and
4 although their function is primarily around validation of expenditures, the Internal Audit Unit does
5 supplement their work to a degree. He further explained that the State Auditor does rely on the internal
6 processes of the Internal Audit Unit particularly in the County Health Departments but they also test the
7 work of the Internal Audit Unit as well. The Board further inquired of Mr. Lloyd Smith as to whether or
8 not staffing levels would impact completion of the audit plan. Mr. Smith reemphasized that each year the
9 goals set forth in the audit plan are intentionally more aggressive. The audit plan serves as a map for the
10 Board and the Department for how the unit will prioritize the work based on the risk factors identified.
11 The Internal Audit Unit is working to fill three vacancies; however, the unit is confident they can
12 accomplish a satisfactory amount of the work outlined in the plan. Barry Smith recommended approval
13 of the 2013 Audit Plan.

14
15 **Mr. Smith moved Board approval of the 2013 Audit Plan as presented. Second Dr. Alexopoulos.**
16 **Motion carried.**

17
18 **A YE: Alexopoulos, Burger, Gerard, Krishna, Smith, Starkey, Wolfe, Woodson**
19

20 **Public Health Policy Committee**

21 The Policy Committee met on Tuesday, January 8, 2013. Dr. Gerard, Policy Committee Chair, and Mr.
22 Starkey met with Mark Newman at the Oklahoma State Department of Health in Oklahoma City,
23 Oklahoma. Mark Newman provided an update regarding potential legislation for the next legislative
24 session including copies of the new committee assignments in both the House and Senate for the 54th
25 Legislature. Electronic copies of the committee assignments for both chambers will be sent to all BOH
26 members by VaLauna via email following today’s meeting.

27
28 The local rights legislation may be found in SB 36 authored by Sen. Simpson and support continues to
29 grow community by community across the state. Many thanks should go to our many partners that are
30 working in individual communities to bring resolutions before city councils and the adoption of
31 ordinances to make parks and playgrounds tobacco free.

32 Dr. Gerard commented on the continued impact of the Certified Healthy Programs as well as editorials in
33 many local papers supporting the rights of cities to take action to improve the business climates and the
34 health of their citizens. He encouraged members of the Board with any questions regarding policy issues
35 or proposed legislation, to contact Mark Newman for additional information. The next meeting of the
36 Policy Committee will be prior to the February Board Meeting.

37
38 **BOARD DEVELOPMENT COMMITTEE**

39 The Board Development Committee met on Tuesday, January 8, 2013. Cris Hart-Wolfe, Committee
40 Chair, and Mr. Smith met with VaLauna Grissom at the Oklahoma State Department of Health. Ms.
41 Wolfe reported that the Committee has begun reviewing Board Bylaws for any routine updates or
42 revisions. Mrs. Grissom will continue to send local and statewide advocacy opportunities to members of
43 the Board. The next meeting of the Board Development Committee will be February 12, 2013.

44
45 **PRESIDENT’S REPORT**

46 Dr. Krishna reminded the members of the Board that the February Board of Health meeting would take
47 place at the Cleveland County Health Department in Moore. Meeting details and information would be
48 provided in the February Board packet.

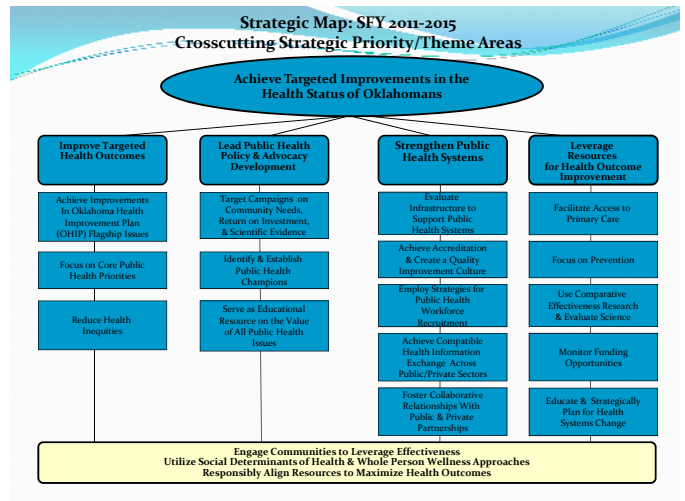
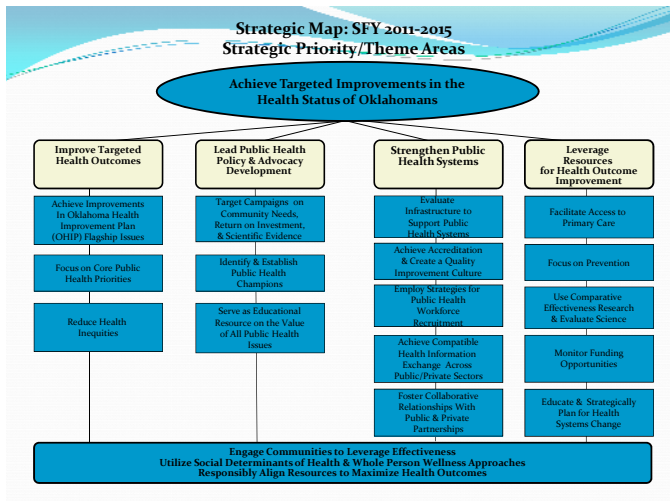
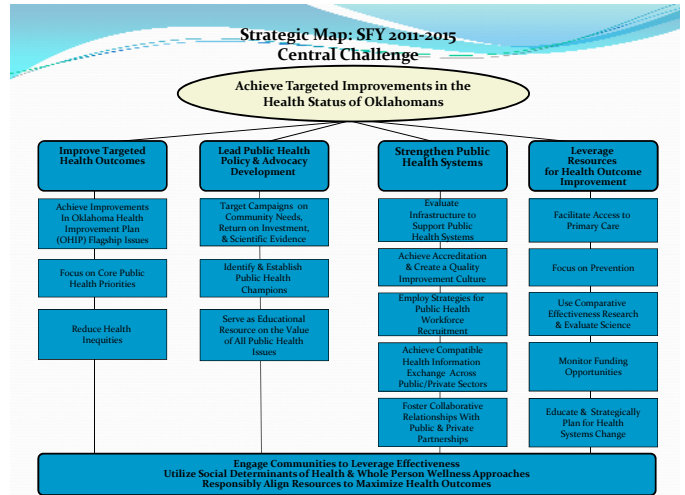
49
50 Dr. Krishna expressed his enthusiasm for a positive beginning in the New Year as well as his optimism
51 about a new future for healthcare.

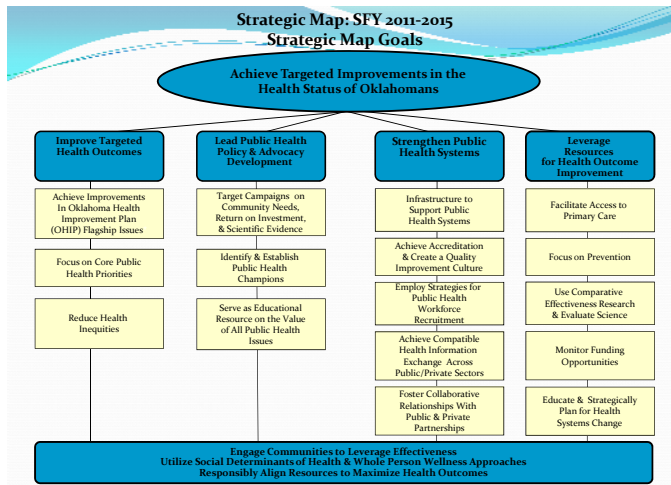
52
53 **STRATEGIC PLAN UPDATE & COMMISSIONER’S REPORT**

54 Terry L. Cline, Ph.D., Commissioner of Health
55

Oklahoma State Board of Health Strategic Plan Update

Terry Cline, Ph.D.
Commissioner of Health
Secretary of Health and Human Services
January 8, 2013





Oklahoma Health Improvement Plan (OHIP)
Flagship Issues

- Children’s Health Improvement
- Tobacco Use Prevention
- Obesity Reduction

Core Public Health Priorities

Children’s Health

- Infant Mortality
- Prenatal Care

Disease & Injury Prevention/Resources

- Immunization
- Motor Vehicle Crashes
- Preventable Hospitalizations

Imperatives

- All Hazards Preparedness
- Infectious Disease
- Mandates

Strong & Healthy Oklahoma/Wellness

- Cardiovascular Health
- Obesity
- Tobacco

STAT Strategic Planning
Priority Area Lead Champions

OHIP Flagship & Core Public Health Services

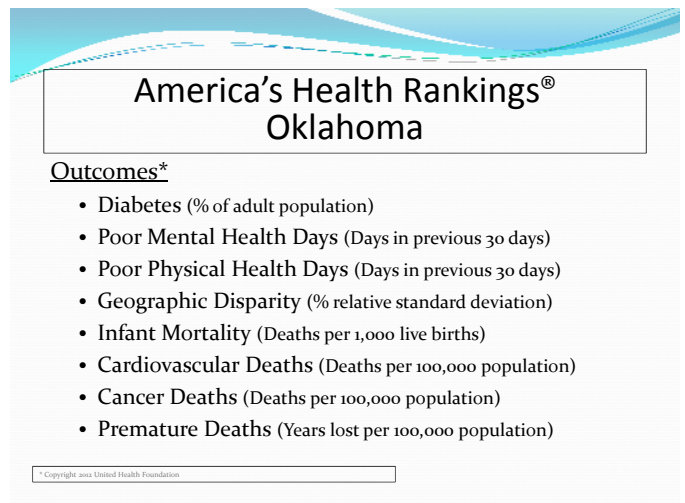
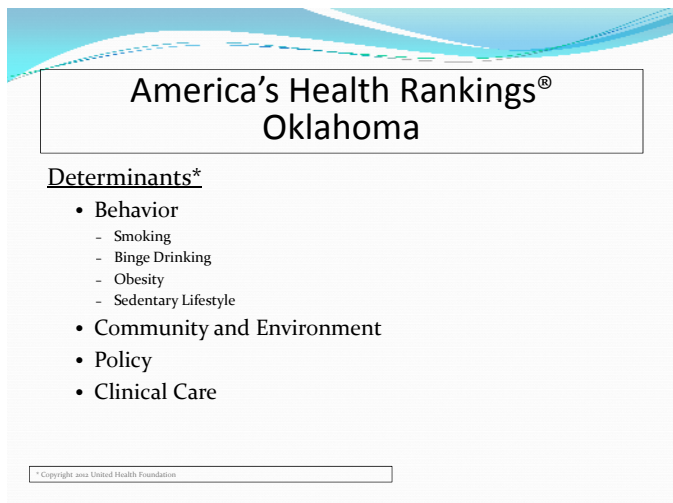
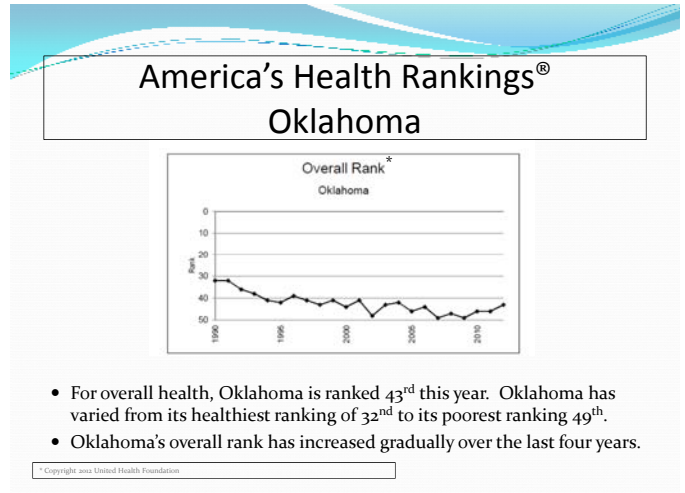
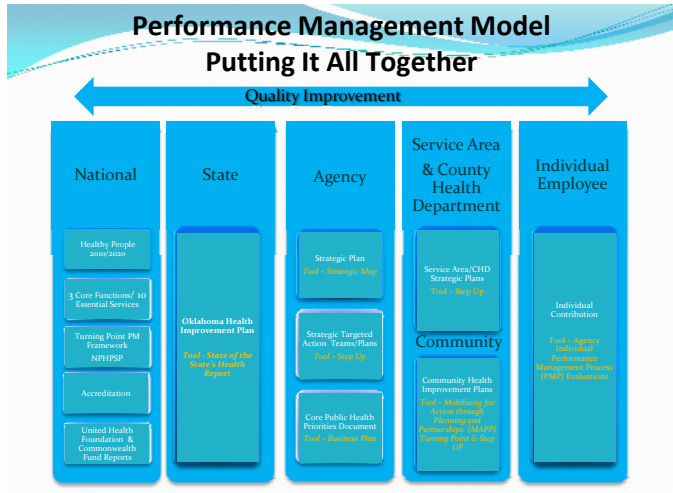
- Strong & Healthy Oklahoma /Wellness (Keith Reed)
- Children’s Health (Dr. Edd Rhoades)
- Disease & Injury Prevention/Imperatives (Drs. Kristy Bradley & Hank Hartsell)
- Health Inequities (Neil Hann)

Policy & Advocacy
 (Dr. Mark Newman)

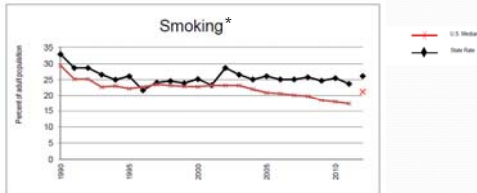
Public Health Systems

- Infrastructure, Performance Management, & Accreditation (Joyce Marshall)
- Workforce (Toni Frioux)
- Health Information Exchange [HIE] (Julie Cox-Kain)
- Public/Private Partnerships (Neil Hann)

Resources
 (Julie Cox-Kain)



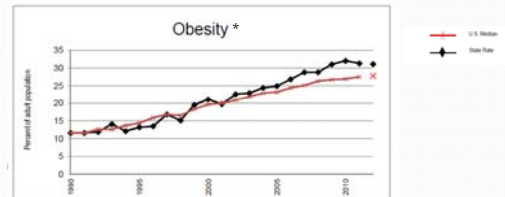
America's Health Rankings® Oklahoma - Smoking



- In Oklahoma, 745,000 adults smoke
- More than 1 in 4 adult Oklahomans smoke
- Smoking is the number one preventable cause of death in Oklahoma

* Copyright 2012 United Health Foundation

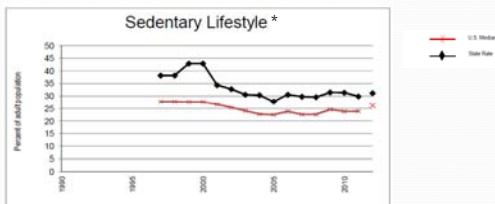
America's Health Rankings® Oklahoma - Obesity



- In Oklahoma – 888,000 adults are obese
- Almost 1 in 3 adult Oklahomans are obese

* Copyright 2012 United Health Foundation

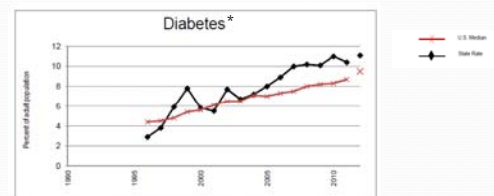
America's Health Rankings® Oklahoma – Sedentary Lifestyle



- In Oklahoma – 891,000 adults are sedentary
- An important indicator of future obesity rates

* Copyright 2012 United Health Foundation

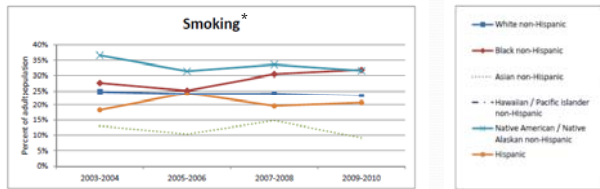
America's Health Rankings® Oklahoma - Diabetes



- In Oklahoma – 317,000 adults have diabetes
- More than 1 in 9 adult Oklahomans have diabetes

* Copyright 2012 United Health Foundation

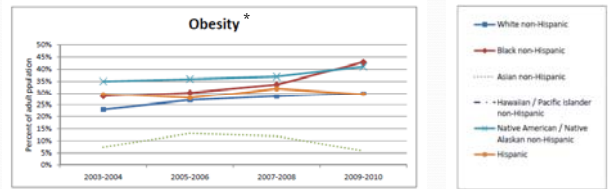
Health Disparities Oklahoma Smoking



- Concerning trend for the Black non-Hispanic population
- Slow rates of decline cost thousands of Oklahomans their life each year

* Copyright 2011 United Health Foundation

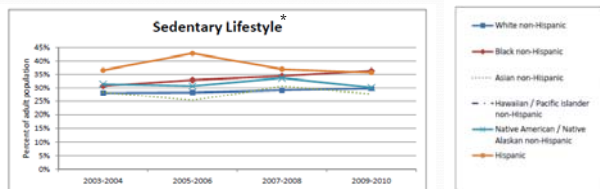
Health Disparities Oklahoma Obesity



- Concerning trend for the Black non-Hispanic and Native American populations
- Potential leveling in other populations

* Copyright 2011 United Health Foundation

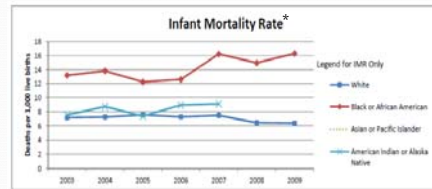
Health Disparities Oklahoma Sedentary Lifestyle



- Potential leveling which may predict plateau in obesity rates, or potential decline

* Copyright 2011 United Health Foundation

Health Disparities Oklahoma Infant Mortality Rate



- While overall rate of decline in infant mortality rates, there is a growing disparity between rates for the Black non-Hispanic and White non-Hispanic populations

* Copyright 2011 United Health Foundation

Every Week Counts (EWC) Collaborative

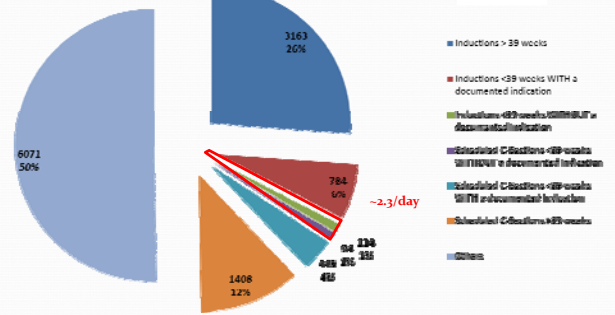
Elimination of elective deliveries prior to 39 completed weeks of pregnancy



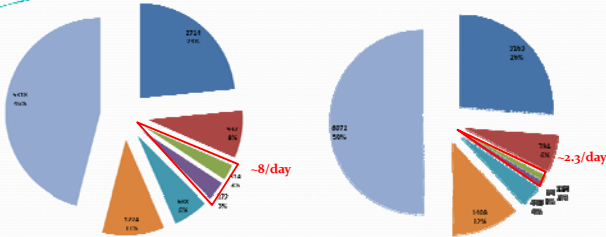
Preparing for a Lifetime
It's Everyone's Responsibility

Total Deliveries by Gestational Age and Documented Indication

July - September 2012



Total Deliveries by Gestational Age and Documented Indication



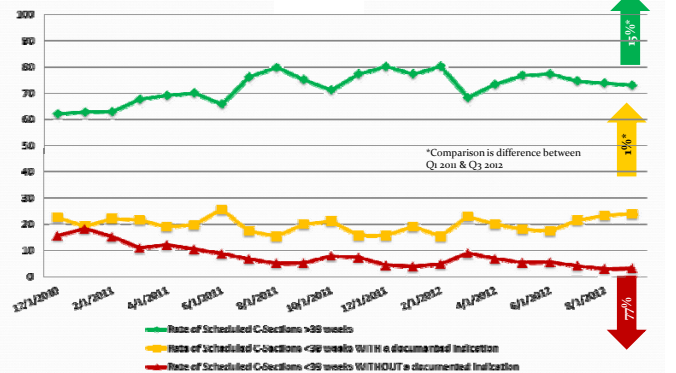
Qtr 1 2011: January 1 - March 31, 2011

Qtr 3 2012: July 1 - September 30, 2012

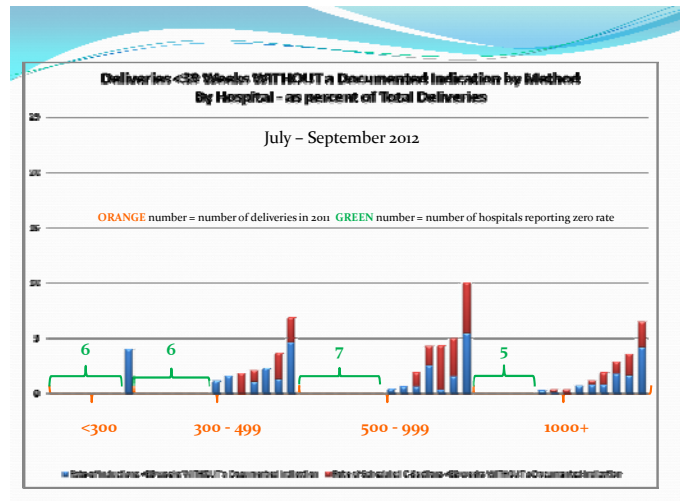
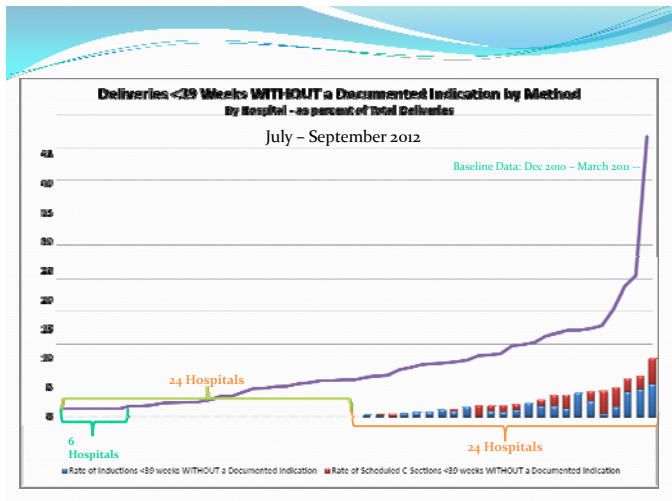
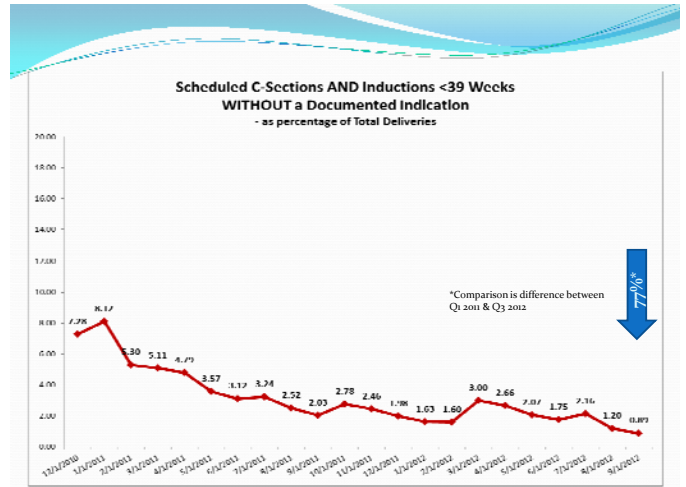
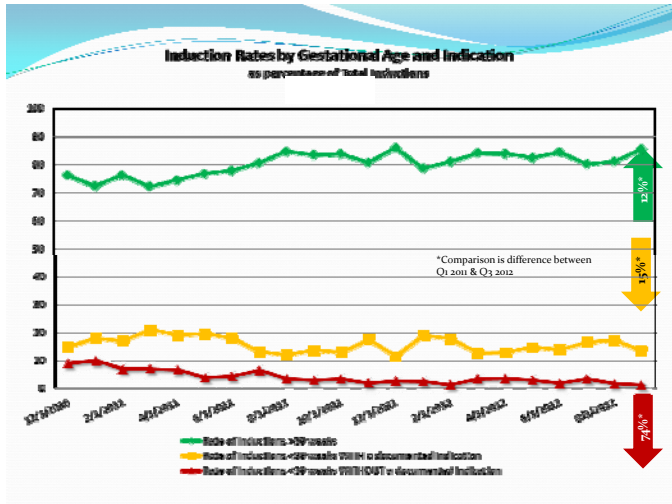
- Inductions > 39 weeks
- Inductions < 39 weeks WITH a documented indication
- Inductions < 39 weeks WITHOUT a documented indication

- Scheduled C-Sections < 39 weeks WITHOUT a documented indication
- Scheduled C-Sections < 39 weeks WITH a documented indication
- Scheduled C-Sections > 39 weeks
- Others

Scheduled C-Section Rates by Gestational Age and Indication
As percentage of Total Scheduled C-Sections

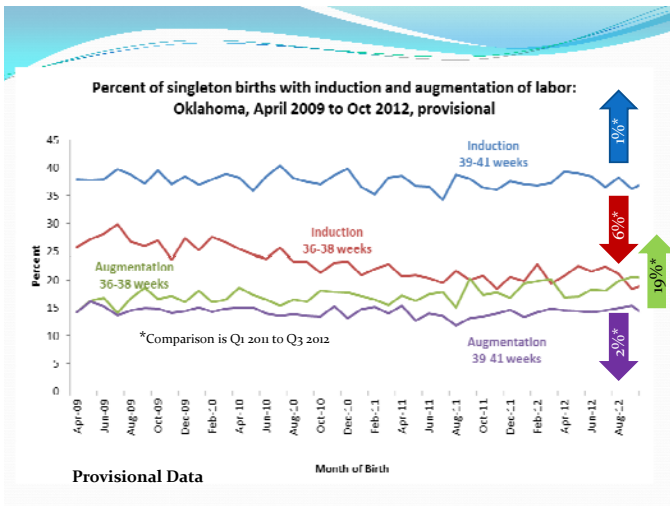
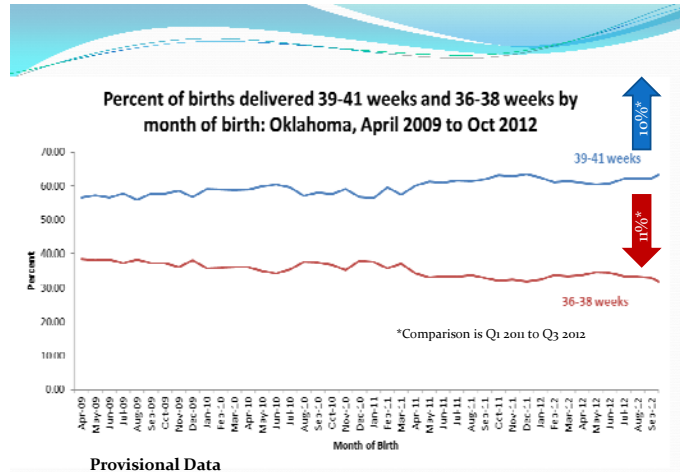


↑ 15%
↑ 4%
↓ 77%
*Comparison is difference between Q1 2011 & Q3 2012



Oklahoma Birth Certificate Data

Provisional
April 2009 – September 2012



1 Following Dr. Cline's presentation, Suzanna Dooley, Chief of Maternal and Child Health Services,
2 briefly discussed the partnerships that have contributed to the success of the Every Week Counts
3 Initiative. She indicated that Oklahoma hospitals have been very supportive of this initiative and the
4 current feedback has not been for regulatory measures but rather additional educational assistance.
5

6 **NEW BUSINESS**

7 None
8

9 **EXECUTIVE SESSION**

10 **Mr. Starkey Board approval to move into Executive Session at 12:17p.m.** pursuant to 25 O.S. Section
11 307(B)(4) for confidential communications to discuss pending department litigation and investigations;
12 pursuant to 25 O.S. Section 307(B)(1) to discuss the employment, hiring, appointment, promotion,
13 demotion, disciplining or resignation of any individual salaried public officer or employee and pursuant to
14 25 O.S. Section 307 (B)(7) for discussing any matter where disclosure of information would violate
15 confidentiality requirements of state or federal law.

- 16 • Annual performance evaluation for the Commissioner of Health, Office of Accountability
- 17 • Systems Director, Internal Audit Unit Director, and Board of Health Secretary
- 18 • Planned Parenthood v. Cline, United States District Court, Western District of Oklahoma, Case
19 Number CIV-12-1245

20 **Second Dr. Alexopulos. Motion carried.**

21
22 **AYE: Alexopulos, Burger, Gerard, Krishna, Smith, Starkey, Wolfe, Woodson**

23
24 **Mr. Starkey moved Board approval to move out of Executive Session at 2:20 p.m. Second Ms.**
25 **Wolfe. Motion Carried.**

26
27 **AYE: Alexopulos, Burger, Gerard, Krishna, Smith, Starkey, Wolfe, Woodson**
28

29 **ADJOURNMENT**

30 **Dr. Gerard moved Board approval to Adjourn. Second Dr. Alexopulos. Motion carried.**

31
32 **AYE: Alexopulos, Burger, Gerard, Krishna, Smith, Starkey, Wolfe, Woodson**
33

34 The meeting adjourned at 2:20 p.m.
35

36 Approved

37 *R. Murali Krishna*
38 M.D.

39 R. Murali Krishna, M.D.

40 President, Oklahoma State Board of Health

41 February 12, 2013