

Holidays

- New Year's Day
- St. Patrick's Day
- Memorial Day
- Independence Day
- Labor Day
- Halloween
- Thanksgiving
- Christmas

2021 Highway Safety Fact Sheet: New Year's Day Crash Facts

The 2021 New Year's Day holiday included a total of 3078 hours, beginning at 6:00pm on Thursday, December 31, 2020, and ending at 11:59pm on Sunday, January 3, 2021

Crashes & Fatalities

During the New Year's Day holiday, 2021, there were a total of 479 crashes throughout the state of Oklahoma. None of these crashes resulted in a fatality.

Of the 479 total crashes, 34 were alcohol and/or drug related. This means that over 187% of the holiday crashes on Oklahoma roads involved a potentially impaired driver.

New Year's Day 2021 Crashes in Oklahoma

Crash Severity	All Crashes		Alcohol/Drug Related Crashes	
	Crashes	Persons	Crashes	Persons
Fatal	0	0	0	0
Injury	140	191	10	16
Non-Injury	339	824	24	47
Total	479	1015	34	63

Injury includes serious, minor, and possible injuries.

Total includes all crashes (fatal, injury, and property damage only crashes)

New Year's Day Holiday Fatalities, 2017 - 2021



New Year's Day Fatality Trends

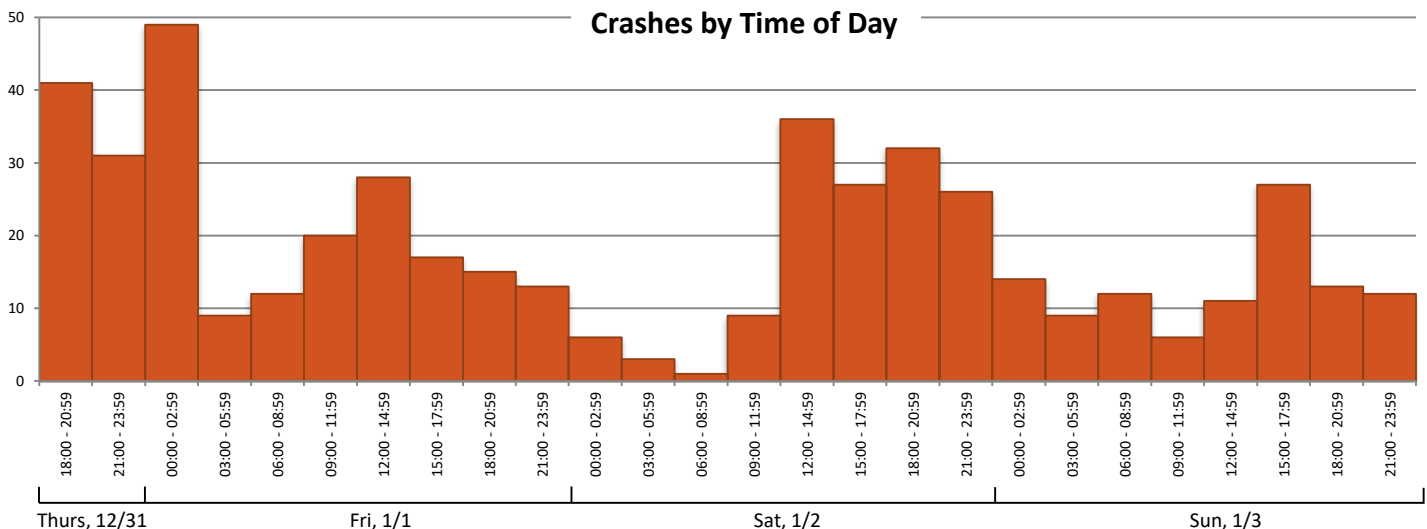
Fatalities on Oklahoma roads over the New Year's Day holiday decreased from the previous years and 2021 saw the lowest number of fatalities over the holiday period out of any of the past five years with no fatalities during the reporting period.

The number of alcohol/drug related fatalities over the New Year's holiday has also been on the decline over the last five years.

Crash Timeline

As seen in the chart below, a large number of crashes occurred on Thursday evening after work hours and again, just after midnight. Saturday afternoon also saw a high volume of crashes.

Crashes by Time of Day



2021 Highway Safety Fact Sheet: St. Patrick's Day Crash Facts

The 2021 St. Patrick's Day holiday included a total of 30 hours, beginning at 6:00pm on Tuesday, March 16, and ending at 11:59pm on Wednesday, March 17

Crashes & Fatalities

During the 2021 St. Patrick's Day holiday there were a total of 262 crashes in the state of Oklahoma. Three of these crashes were fatal, resulting in the deaths of three persons. Two of these fatalities occurred in alcohol/drug-related crashes.

Of the 262 total crashes, 20 were alcohol and/or drug related. This means that over 7% of the holiday crashes on Oklahoma roads involved a potentially impaired driver.

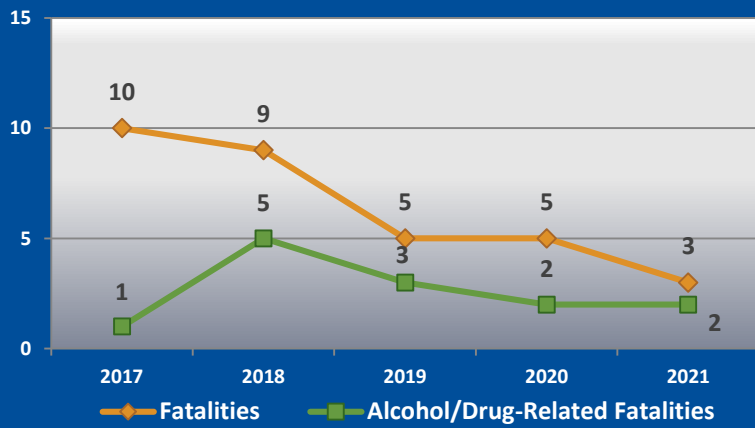
St. Patrick's Day 2021 Crashes in Oklahoma

Crash Severity	All Crashes		Alcohol/Drug Related Crashes	
	Crashes	Persons	Crashes	Persons
Fatal	3	3	2	2
Injury	97	142	7	8
Non-Injury/Unk	162	465	11	24
Total	262	610	20	34

Injury includes serious, minor, and possible injuries.

Total includes all crashes (fatal, injury, and property damage only crashes)

St. Patrick's Day Holiday Fatalities, 2017 - 2021



St. Patrick's Day Fatality Trends

Since St. Patrick's Day in 2021 fell on a Wednesday, the holiday reporting period was shortened to just 30 hours and did not include any weekend hours. Despite this, there were still three fatalities during the reporting period, down just one from five in 2020.

The number of alcohol/drug related fatalities remained steady with two in 2021. 2018 saw the highest number of alcohol/drug related fatalities in the last five years.

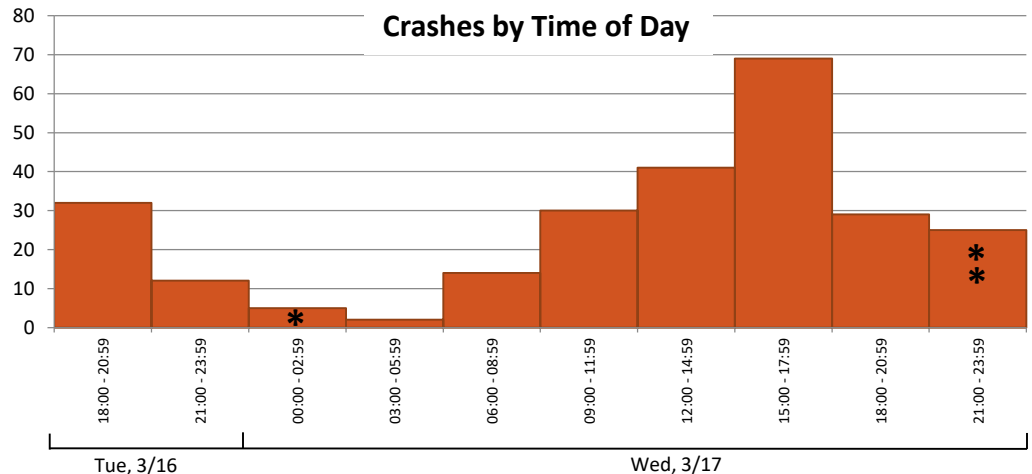
Restraint Use among Fatalities

Of the three fatalities, one was the driver of a pickup truck, who was unrestrained, and one was the driver of a passenger car, who was wearing a seat belt. The final fatality was a pedestrian, who was walking with traffic when hit.

Crash Timeline

As seen in the chart on the right, a large number of crashes this St. Patrick's Day occurred on Wednesday afternoon. This is typical of any weekday when most crashes occur during after school/work hours. Two of the three fatal crashes happened after 9:00pm on Wednesday.

* Fatal crashes



2021 Highway Safety Fact Sheet: Memorial Day Crash Facts

The 2021 Memorial Day holiday period included a total of 78 hours, beginning at 6:00pm on Friday, May 28, and ending at 11:59pm on Monday, May 31.

Crashes & Fatalities

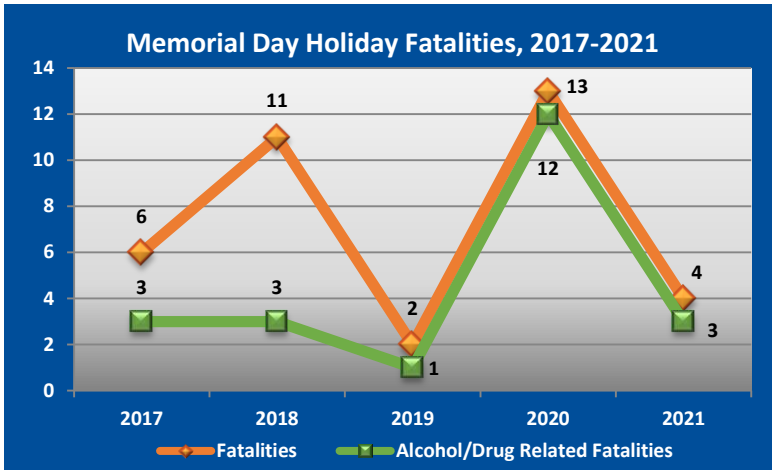
During the Memorial Day holiday, 2021, there were a total of 530 crashes in the state of Oklahoma. Four of these crashes were fatal, resulting in the deaths of four persons. Three of these deaths occurred in crashes that were alcohol/drug-related.

Of the 530 total crashes, 41 were alcohol and/or drug-related. This means that over 7% of the holiday crashes on Oklahoma roads involved a potentially impaired driver.

Memorial Day Holiday 2021 Crashes in Oklahoma

Crash Severity	All Crashes		Alcohol/Drug Related Crashes	
	Crashes	Persons	Crashes	Persons
Fatal	4	4	3	3
Injury	175	265	20	32
Non-Injury/Unk	351	1059	18	42
Total	530	1328	41	77

Injury includes serious, minor, and possible injuries.
Total includes all crashes (fatal, injury, and property damage only crashes)



Memorial Day Fatality Trends

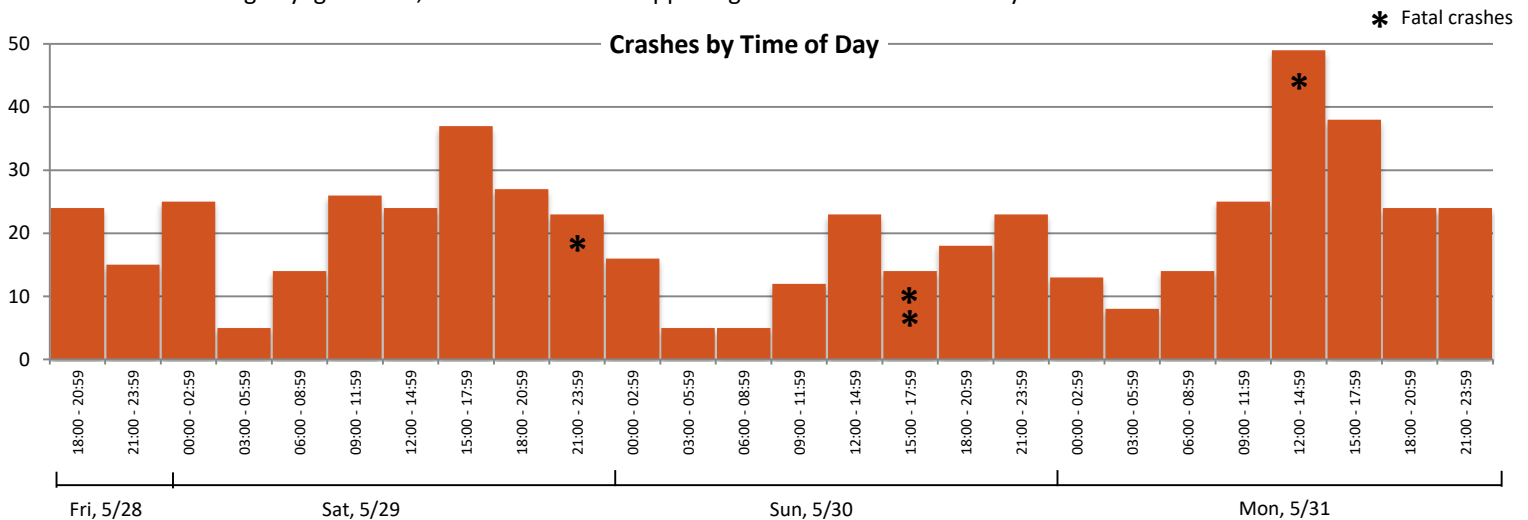
Fatalities on Oklahoma roads over the Memorial Day holiday weekend decreased significantly from the previous year's holiday period, going from thirteen in 2020 to four in 2021. The number of alcohol-related fatalities also decreased drastically from twelve to three. 2020 saw the highest number of fatalities overall, as well as the highest number of alcohol/drug-related fatalities in any of the past five years.

Restraint Use Among Fatalities

Of the four fatalities over Memorial Day weekend in 2021, one was a bicyclist hit while riding in traffic. Another was the driver of an ATV who was not wearing a helmet. The other two fatalities were both drivers of passenger cars who were also both not wearing seat belts. Both of the vehicle drivers, as well as the ATV driver, are suspected of driving at unsafe speeds.

Crash Timeline

As seen in the chart below, most of crashes over the Memorial Day holiday weekend occurred during the daytime hours, with the highest number of crashes occurring on Monday afternoon with another high frequency of crashes on Saturday afternoon. Three of the four fatal crashes occurred during daylight hours, with two of those happening late afternoon on Sunday.



* Fatal crashes

2021 Highway Safety Fact Sheet: Independence Day Crash Facts

The 2021 Independence Day holiday period included a total of 78 hours, beginning at 6:00pm on Friday, July 2, and ending at 11:59pm on Monday, July 5, 2021

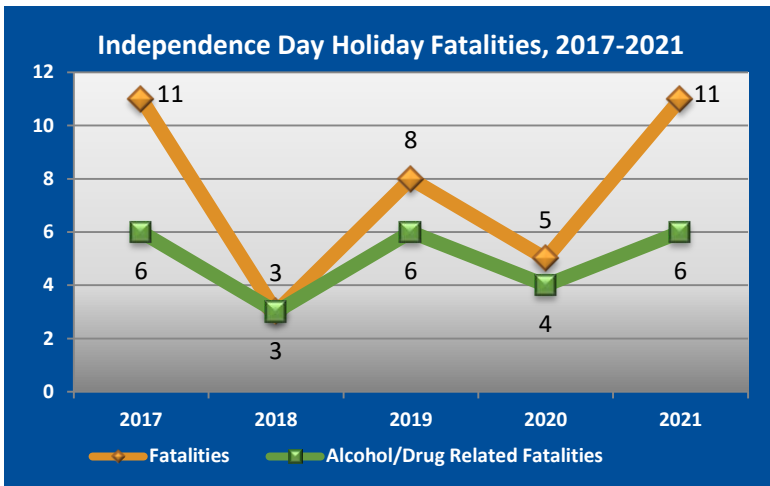
Crashes & Fatalities

During the 78-hour Independence Day holiday, 2021, there were a total of 541 crashes in the state of Oklahoma. Eleven of these crashes were fatal, resulting in the deaths of 11 persons. Six of these fatalities occurred in alcohol/drug related crashes.

Of the 541 total crashes, 52 were alcohol and/or drug related. This means that nearly 10% of the holiday crashes on Oklahoma roads involved a potentially impaired driver.

Independence Day Holiday 2021 Crashes in Oklahoma				
Crash Severity	All Crashes		Alcohol/Drug Related Crashes	
	Crashes	Persons	Crashes	Persons
Fatal	11	11	6	6
Injury	183	302	22	35
Non-Injury/Unk	347	1026	24	69
Total	541	1339	52	110

Injury includes serious, minor, and possible injuries.
Total includes all crashes (fatal, injury, and property damage only crashes)



Independence Day Fatality Trends

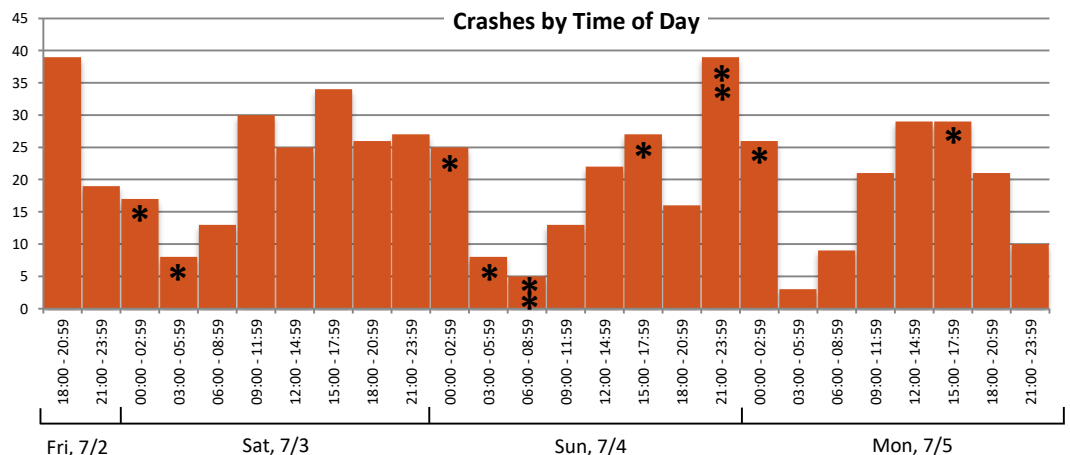
Fatalities on Oklahoma roads over the Independence Day holiday weekend increased from the previous year's holiday period, going from five in 2020 to eleven in 2021. 2017 and 2021 both saw the highest number of fatalities over this holiday weekend in the last five years. The number of alcohol/drug-related fatalities also increased from four in 2020 to six in 2021.

Restraint Use Among Fatalities

Of the eleven fatalities over July 4th weekend, one was the driver of a car, one the driver of a pickup, and one the driver of a motor home; none of these three were wearing seat belts. There was also a passenger in a car, who was not wearing a seat belt, and the passenger of an SUV who was belted. Five other fatalities were riding motorcycles, one as a passenger, and four as drivers. One of the drivers was wearing a helmet, helmet use was unknown on another driver, and the rest were unhelmeted. The remaining fatality was a pedestrian.

Crash Timeline

As seen in the chart to the right, crash counts were high in the evening hours of Friday, July 2, as well as throughout the day on Saturday, July 3. There was also a significant spike in the number of crashes after 9:00pm on Sunday, July 4. The majority of the fatality crashes occurred in the overnight/early morning hours throughout the weekend.



* Fatal crashes

2021 Highway Safety Fact Sheet: Labor Day Crash Facts

The 2021 Labor Day holiday included a total of 78 hours, beginning at 6:00pm on Friday, September 3, and ending at 11:59pm on Monday, September 6

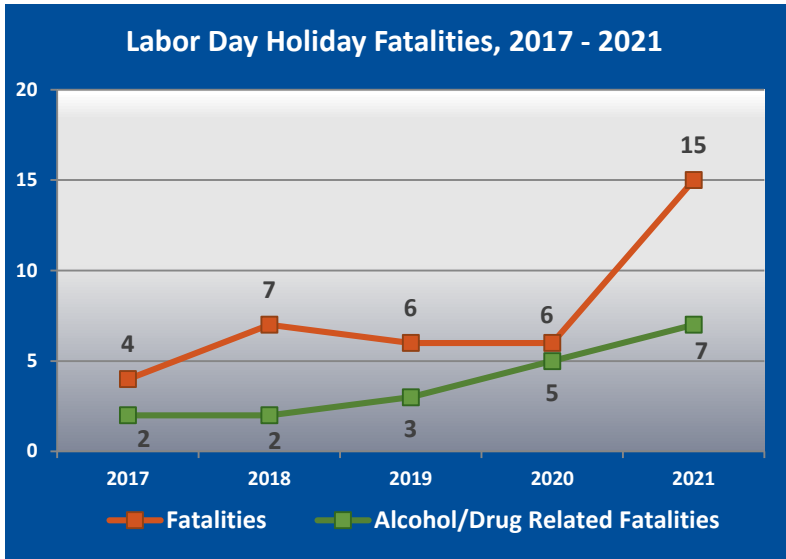
Crashes & Fatalities

During the Labor Day holiday, 2021, there were a total of 483 crashes throughout the state of Oklahoma. Thirteen of these crashes were fatal, resulting in the deaths of 15 persons. Seven of these fatalities occurred in alcohol/drug related crashes.

Of the 483 total crashes, 52 were alcohol and/or drug related. This means that over 10% of the holiday crashes on Oklahoma roads involved a potentially impaired driver.

Labor Day 2021 Crashes in Oklahoma				
Crash Severity	All Crashes		Alcohol/Drug Related Crashes	
	Crashes	Persons	Crashes	Persons
Fatal	13	15	6	7
Injury	155	248	21	34
Non-Injury	315	862	25	72
Total	483	1125	52	113

Injury includes serious, minor, and possible injuries.
Total includes all crashes (fatal, injury, and property damage only crashes)



Labor Day Fatality Trends

Fatalities on Oklahoma roads over the Labor Day holiday increased significantly from the 2020 Labor Day period from six to 15. 2017 saw the lowest number of fatalities over the holiday period out of any of the past five years, with 2021 having the highest number of fatalities in the past five years.

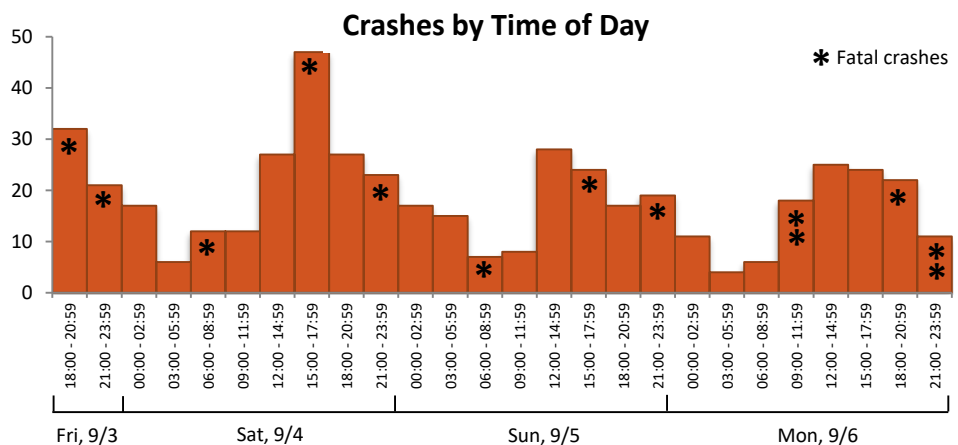
Just as fatalities increased, the number of alcohol/drug related fatalities also increased from 2020 to 2021. 2021 saw the highest number of impaired driving fatalities out of the past five years.

Restraint Use among Fatalities

Of the 15 fatalities, four were drivers and three were passengers of pickup trucks, one was the driver of a car, and two were drivers of SUVs. Of these ten people, only two were wearing seat belts. Two other fatalities were motorcycle drivers who were not wearing helmets. The other three fatalities included two pedestrians and a bicyclist.

Crash Timeline

As seen in the chart on the right, a large number of crashes occurred on Friday evening and during the daytime hours on Saturday and on Sunday of Labor Day weekend. The most number of crashes occurred on Saturday afternoon/early evening. The majority of fatalities took place in the overnight or early morning hours throughout the weekend.



2021 Highway Safety Fact Sheet: Halloween Crash Facts

The 2021 Halloween holiday included a total of 54 hours, beginning at 6:00pm on Friday October 29, and ending at 11:59pm on Sunday, October 31.

Crashes & Fatalities

During the 2021 Halloween holiday weekend period, there were a total of 363 crashes in the state of Oklahoma. Three of these crashes were fatal, killing three persons.

Two persons were killed in alcohol/drug related crashes. Of the 363 total crashes, 33 were alcohol and/or drug related. This means that over 9% of the Halloween crashes on Oklahoma roads involved a potentially impaired driver.

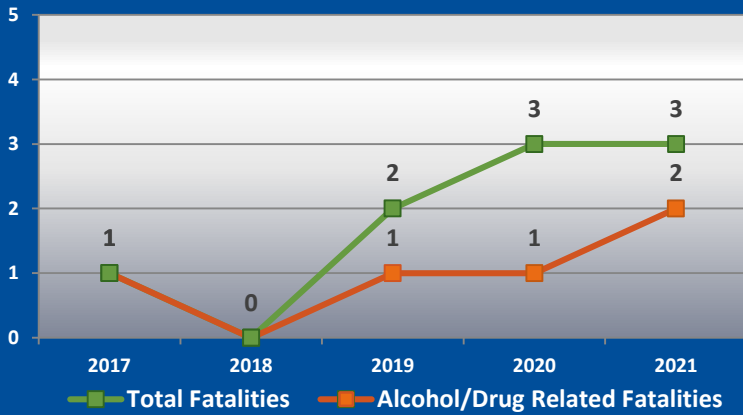
Halloween 2021 Crashes in Oklahoma

Crash Severity	All Crashes		Alcohol/Drug Related Crashes	
	Crashes	Persons	Crashes	Persons
Fatal	3	3	2	2
Injury	107	153	12	23
Non-Injury	253	729	19	40
Total	363	885	33	65

Injury includes serious, minor, and possible injuries.

Total includes all crashes (fatal, injury, and property damage only crashes)

Halloween Fatalities, 2017 - 2021



Halloween Fatality Trends

Fatalities on Oklahoma roads on Halloween remained steady from 2020 to 2021 with three. One of the fatalities in 2021 was alcohol-related, and one was drug-related.

Of the three fatalities, two were drivers of passenger vehicles and one was the passenger of a passenger vehicle. All three of these fatality victims were unrestrained. Two of the fatality crashes happened on Friday evening (10/29), and the other occurred just after midnight on Halloween (10/31).

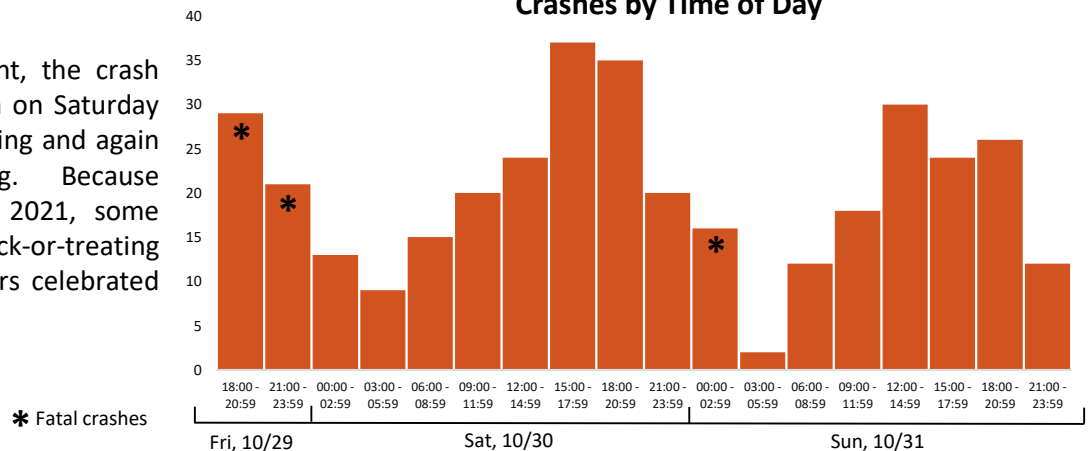
Pedestrians in Crashes on Halloween

With an increased number of pedestrians on neighborhood streets during the evening hours of Halloween, pedestrian safety is paramount on Halloween. In 2021, there were three crashes involving a total of three pedestrians, all of which were over the age of 18. One pedestrian suffered minor injuries, one sustained possible injuries, and the other had unknown injuries. One pedestrian was crossing at an intersection, and one was in the roadway but not in a crosswalk or intersection. Two of the three were hit and run crashes. No children were involved in collisions while trick-or-treating in 2021.

Crash Timeline

As seen in the chart on the right, the crash counts were highest after 3:00pm on Saturday and continued into Saturday evening and again on Sunday afternoon/evening. Because Halloween fell on a Sunday in 2021, some communities chose to hold trick-or-treating activities on Saturday, while others celebrated on Sunday.

Crashes by Time of Day



* Fatal crashes

2021 Highway Safety Fact Sheet: Thanksgiving Crash Facts

The 2021 Thanksgiving holiday included a total of 102 hours, beginning at 6:00pm on Wednesday, November 24, and ending at 11:59pm on Sunday, November 28

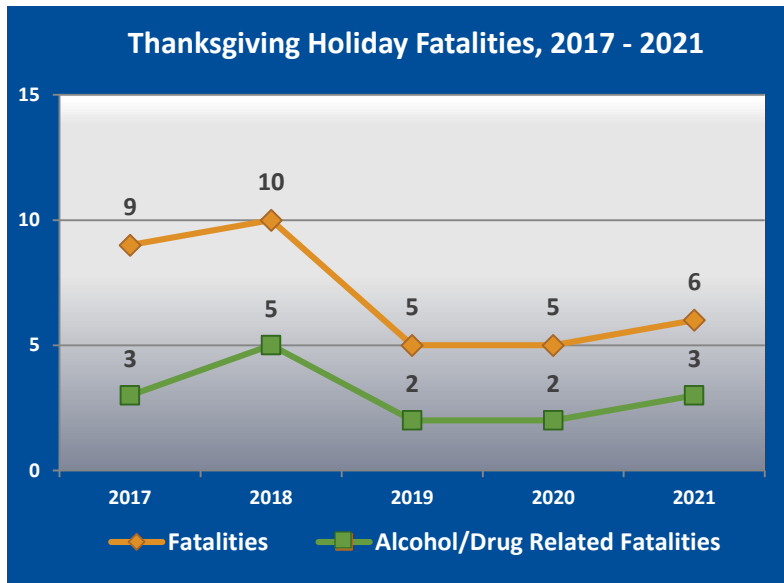
Crashes & Fatalities

During the Thanksgiving holiday, 2021, there were a total of 586 crashes throughout the state of Oklahoma. Six of these crashes were fatal, resulting in the deaths of six persons. Three of these fatalities occurred in alcohol/drug related crashes.

Of the 586 total crashes, 47 were alcohol and/or drug related. This means that over 8% of the Thanksgiving holiday crashes on Oklahoma roads involved a potentially impaired driver.

Thanksgiving 2021 Crashes in Oklahoma				
Crash Severity	All Crashes		Alcohol/Drug Related Crashes	
	Crashes	Persons	Crashes	Persons
Fatal	6	6	3	3
Injury	190	291	18	38
Non-Injury/Unk	390	1117	26	72
Total	586	1414	47	113

Injury includes serious, minor, and possible injuries.
Total includes all crashes (fatal, injury, and property damage only crashes)



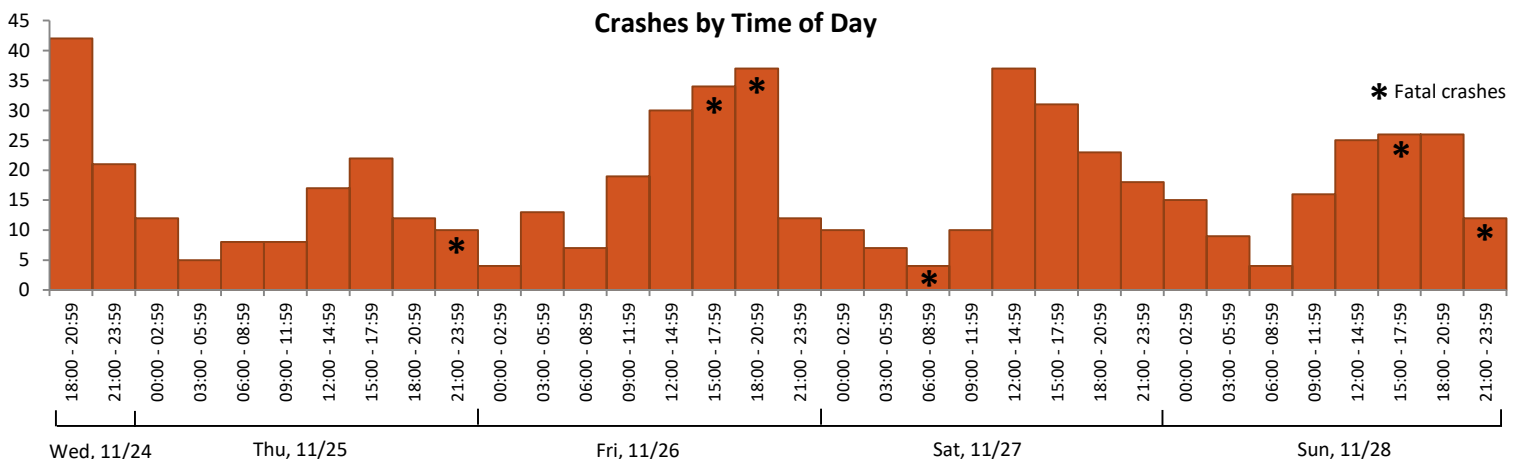
Thanksgiving Fatality Trends

Fatalities on Oklahoma roads over the Thanksgiving holiday rose slightly from the previous year, from five in 2020 to six in 2021. 2017 and 2018 still show the highest numbers of fatalities, as well as the highest numbers of alcohol and/or drug-related fatalities, over the last five years.

Of the six fatalities, one was the driver of an SUV and one was the driver of a pickup truck. The SUV driver was restrained, and restraint use is unknown for the pickup truck driver. There were also two SUV passengers, one restrained and one unrestrained, included among the fatalities. The last two fatalities included a pedestrian and a bicyclist.

Crash Timeline

The time period with the highest number of crashes over the Thanksgiving holiday was after 6:00pm on the Wednesday before Thanksgiving Day. Additionally, higher crash counts were seen on both Friday and Saturday afternoon/early evening hours after Thanksgiving Day. The majority of the fatal crashes happened in the late afternoon/evening hours over the holiday period.



2021 Highway Safety Fact Sheet: Christmas Crash Facts

The 2021 Christmas holiday included a total of 78 hours, beginning at 6:00pm on Thursday, December 23, and ending at 11:59pm on Sunday, December 26

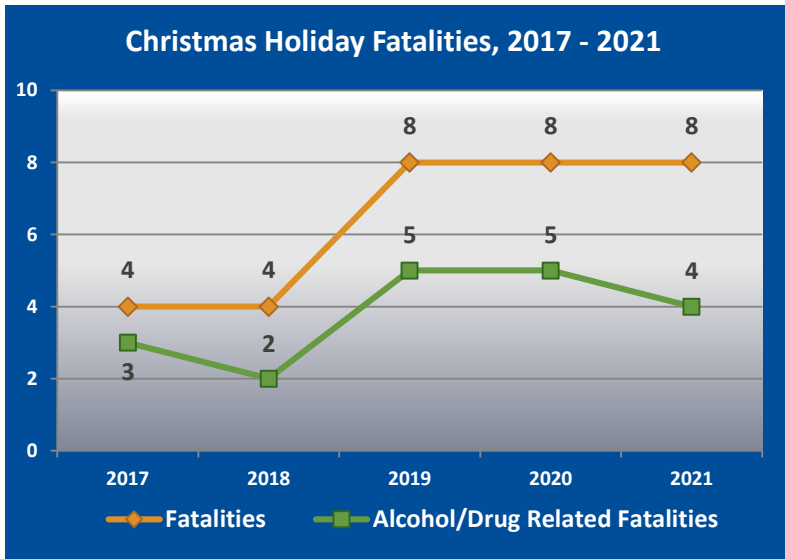
Crashes & Fatalities

During the 78-hour reporting period for Christmas 2021, there were a total of 297 crashes in Oklahoma. Seven of these crashes were fatal, resulting in the deaths of eight persons. Four of these fatalities occurred in alcohol/drug related crashes.

Of the 297 total crashes, 31 were alcohol and/or drug related. This means that over 10% of the holiday crashes on Oklahoma roads involved a potentially impaired driver.

Christmas 2021 Crashes in Oklahoma				
Crash Severity	All Crashes		Alcohol/Drug Related Crashes	
	Crashes	Persons	Crashes	Persons
Fatal	7	8	4	4
Injury	92	123	12	16
Non-Injury/Unk	198	565	15	41
Total	297	696	31	61

Injury includes serious, minor, and possible injuries.
Total includes all crashes (fatal, injury, and property damage only crashes)



Christmas Fatality Trends

Fatalities over the Christmas holiday in 2021 remained steady from the 2019 and 2020 Christmas periods, with all three years seeing eight persons killed. This is up significantly from previous years, as seen in the chart to the left. The number of alcohol/drug related fatalities decreased by one in 2021 over previous years.

Of the eight fatalities over Christmas in 2021, seven were drivers of vehicles that included three passenger cars, two SUVs, and two pickup trucks. Of these, one was wearing a seat belt, four were unrestrained, and restraint use was

unknown for the last two drivers. The other fatality over the Christmas holiday in 2021 was a pedestrian who was walking along a state highway at night.

Crash Timeline

The time period with the highest volume of crashes occurred on Thursday evening, Dec. 23rd. Four of the seven fatal crashes occurred in the overnight hours between Christmas Eve and Christmas Day. Five persons died in these four overnight crashes.

