



9020 N. Capital of Texas Hwy, Suite 335
Austin, TX 78759, United States

☎ 512 708 1538
✉ info.US@res-group.com
🌐 www.res-group.com

Via E-Mail: pudenergy@occcemail.com

April 18, 2019

Oklahoma Corporation Commission
P.O. Box 52000
Oklahoma City, OK 73152-2000

Attn: Brandy Wreath, Director of Public Utility Division

Re: Notice of Intent to Construct in Murray County, Oklahoma

Dear Commission:

Pursuant to §17-160.21 of the Oklahoma Wind Energy Development Act, Glass Sands Wind Energy, LLC, an affiliate of Renewable Energy Systems Americas Inc., presents this letter to the Oklahoma Corporation Commission (OCC) as notification of intent to construct a wind energy project ("Project") in Murray County, Oklahoma.

FAA 7460-1 Notice of Proposed Construction or Alteration forms were filed on April 2, 2019. A summary of the FAA 7460-1 filings for each proposed wind turbine tower location within the Project boundary is attached as Exhibit A. Exhibit B to this letter presents a map showing the proposed Project area and turbine locations. As of the date of this notice, and based on publicly available data, Glass Sands Wind Energy, LLC attests that the Project design complies with the setbacks required by Okla. Stat. §17-160.20.

In accordance with Oklahoma law, simultaneously with submitting this letter to the OCC, we are mailing a complete copy of this letter and all exhibits to the Board of County Commissioners for Murray County (as evidenced by the "cc" information at the end of this page). Glass Sands Wind, LLC also confirms it is submitting a notice of intent to construct to the Oklahoma Strategic Military Planning Commission.

Please do not hesitate to contact me at 512-617-2894 or anne-marie.griger@res-group.com with any questions regarding this filing.

Sincerely,

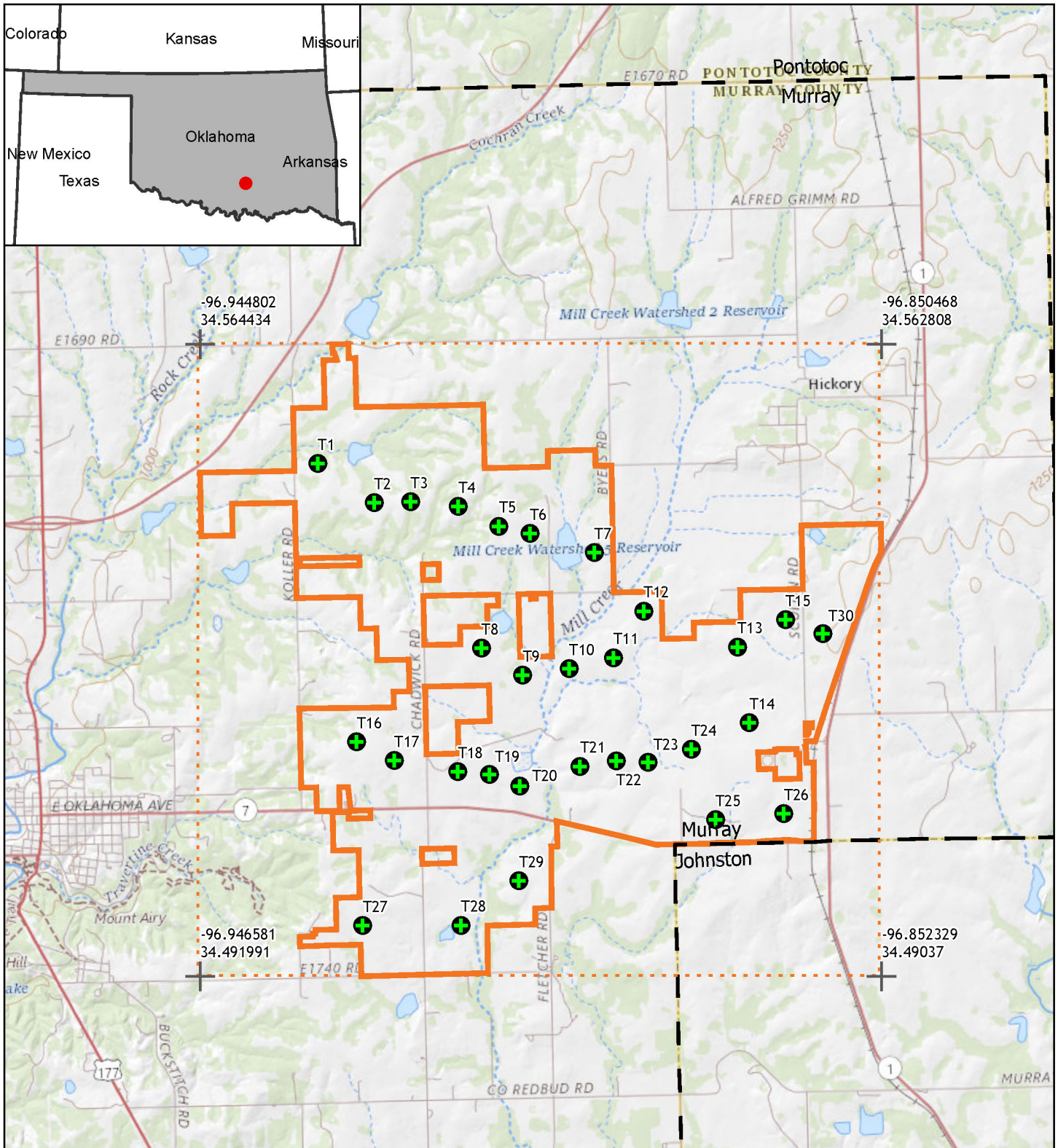
A handwritten signature in black ink that reads 'Anne Marie Griger'. The signature is written in a cursive, flowing style.

Anne-Marie Griger
Permitting Manager

CC: Murray County Commissioners (via email, mcclerkjm@brightok.net)
Oklahoma Strategic Military Planning Commission (hardcopy via mail)

Exhibit A - Form 7460-1 FAA Filings

Structure Name	Latitude (DD-MM-SS.SS)	Longitude (DD-MM-SS.SS)	Site Elevation	Structure Height (AGL)	Requested M&L	ASN
T1	34-33-02.10	96-55-44.83	1110	682	White Paint/Synchronized Red Lights	2019-WTW-3829-OE
T2	34-32-45.37	96-55-17.16	1155	682	White Paint/Synchronized Red Lights	2019-WTW-3830-OE
T3	34-32-45.55	96-54-58.99	1190	682	White Paint/Synchronized Red Lights	2019-WTW-3831-OE
T4	34-32-43.16	96-54-35.24	1217	682	White Paint/Synchronized Red Lights	2019-WTW-3832-OE
T5	34-32-34.67	96-54-15.25	1217	682	White Paint/Synchronized Red Lights	2019-WTW-3833-OE
T6	34-32-31.39	96-53-59.87	1200	682	White Paint/Synchronized Red Lights	2019-WTW-3834-OE
T7	34-32-22.99	96-53-27.92	1187	682	White Paint/Synchronized Red Lights	2019-WTW-3835-OE
T8	34-31-44.54	96-54-25.17	1210	682	White Paint/Synchronized Red Lights	2019-WTW-3836-OE
T9	34-31-33.06	96-54-04.95	1173	682	White Paint/Synchronized Red Lights	2019-WTW-3837-OE
T10	34-31-35.38	96-53-41.71	1167	682	White Paint/Synchronized Red Lights	2019-WTW-3838-OE
T11	34-31-39.45	96-53-19.57	1190	682	White Paint/Synchronized Red Lights	2019-WTW-3839-OE
T12	34-31-58.42	96-53-03.88	1185	682	White Paint/Synchronized Red Lights	2019-WTW-3840-OE
T13	34-31-42.82	96-52-17.65	1220	682	White Paint/Synchronized Red Lights	2019-WTW-3841-OE
T14	34-31-11.50	96-52-12.48	1240	682	White Paint/Synchronized Red Lights	2019-WTW-3842-OE
T15	34-31-53.66	96-51-53.44	1215	682	White Paint/Synchronized Red Lights	2019-WTW-3843-OE
T16	34-31-06.96	96-55-28.30	1215	682	White Paint/Synchronized Red Lights	2019-WTW-3844-OE
T17	34-30-58.91	96-55-09.72	1205	682	White Paint/Synchronized Red Lights	2019-WTW-3845-OE
T18	34-30-53.73	96-54-38.21	1188	682	White Paint/Synchronized Red Lights	2019-WTW-3846-OE
T19	34-30-52.33	96-54-22.44	1180	682	White Paint/Synchronized Red Lights	2019-WTW-3847-OE
T20	34-30-47.27	96-54-07.59	1175	682	White Paint/Synchronized Red Lights	2019-WTW-3848-OE
T21	34-30-54.93	96-53-37.24	1190	682	White Paint/Synchronized Red Lights	2019-WTW-3849-OE
T22	34-30-56.92	96-53-19.19	1200	682	White Paint/Synchronized Red Lights	2019-WTW-3850-OE
T23	34-30-56.00	96-53-03.34	1210	682	White Paint/Synchronized Red Lights	2019-WTW-3851-OE
T24	34-31-00.94	96-52-41.72	1220	682	White Paint/Synchronized Red Lights	2019-WTW-3852-OE
T25	34-30-31.76	96-52-30.39	1220	682	White Paint/Synchronized Red Lights	2019-WTW-3853-OE
T26	34-30-33.70	96-51-56.29	1235	682	White Paint/Synchronized Red Lights	2019-WTW-3854-OE
T27	34-29-51.05	96-55-27.19	1210	682	White Paint/Synchronized Red Lights	2019-WTW-3855-OE
T28	34-29-50.38	96-54-38.22	1135	682	White Paint/Synchronized Red Lights	2019-WTW-3856-OE
T29	34-30-08.21	96-54-08.92	1180	682	White Paint/Synchronized Red Lights	2019-WTW-3857-OE
T30	34-31-47.52	96-51-34.81	1250	682	White Paint/Synchronized Red Lights	2019-WTW-3858-OE



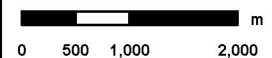
Counties

Project

- Boundary
- 682ft AGL

PROJECT
Glass Sands Wind
TITLE
Overview

STATE	OK	FORMAT	Letter
SCALE	1:70,000	COORD	NAD 1927 UTM Zone 14N



RES Renewable Energy Systems
11101 W. 120th Ave., Suite 400
Broomfield, CO, 80021
Phone: (303) 429-4200
Fax: (303) 429-4299
power for good®