



9020 N. Capital of Texas Hwy, Suite 335
Austin, TX 78759, United States

☎ 512 708 1538
✉ info.US@res-group.com
🌐 www.res-group.com

Via E-Mail: pudenergy@occcemail.com

September 16, 2019

Oklahoma Corporation Commission
P.O. Box 52000
Oklahoma City, OK 73152-2000

Attn: Brandy Wreath, Director of Public Utility Division

Re: Notice of Intent to Construct in Murray County, Oklahoma

Dear Commission:

Pursuant to §17-160.21 of the Oklahoma Wind Energy Development Act, Glass Sands Wind Energy, LLC, an affiliate of Renewable Energy Systems Americas Inc., presents this letter to the Oklahoma Corporation Commission (OCC) as notification of intent to construct a wind energy project ("Project") in Murray County, Oklahoma. This is an update from the notice sent to you on April 18, 2019.

FAA 7460-1 Notice of Proposed Construction or Alteration forms were filed for five shifted proposed turbine locations on August 6, 2019. A summary of the revised filings for each of the five locations is attached as Exhibit A. Exhibit B to this letter presents a map showing the proposed Project area and turbine locations. As of the date of this notice, and based on publicly available data, Glass Sands Wind Energy, LLC attests that the Project design complies with the setbacks required by Okla. Stat. §17-160.20.

In accordance with Oklahoma law, simultaneously with submitting this letter to the OCC, we are mailing a complete copy of this letter and all exhibits to the Board of County Commissioners for Murray County (as evidenced by the "cc" information at the end of this page). Glass Sands Wind, LLC also confirms it is submitting a notice of intent to construct to the Oklahoma Strategic Military Planning Commission.

Please do not hesitate to contact me at 512-617-2894 or anne-marie.griger@res-group.com with any questions regarding this filing.

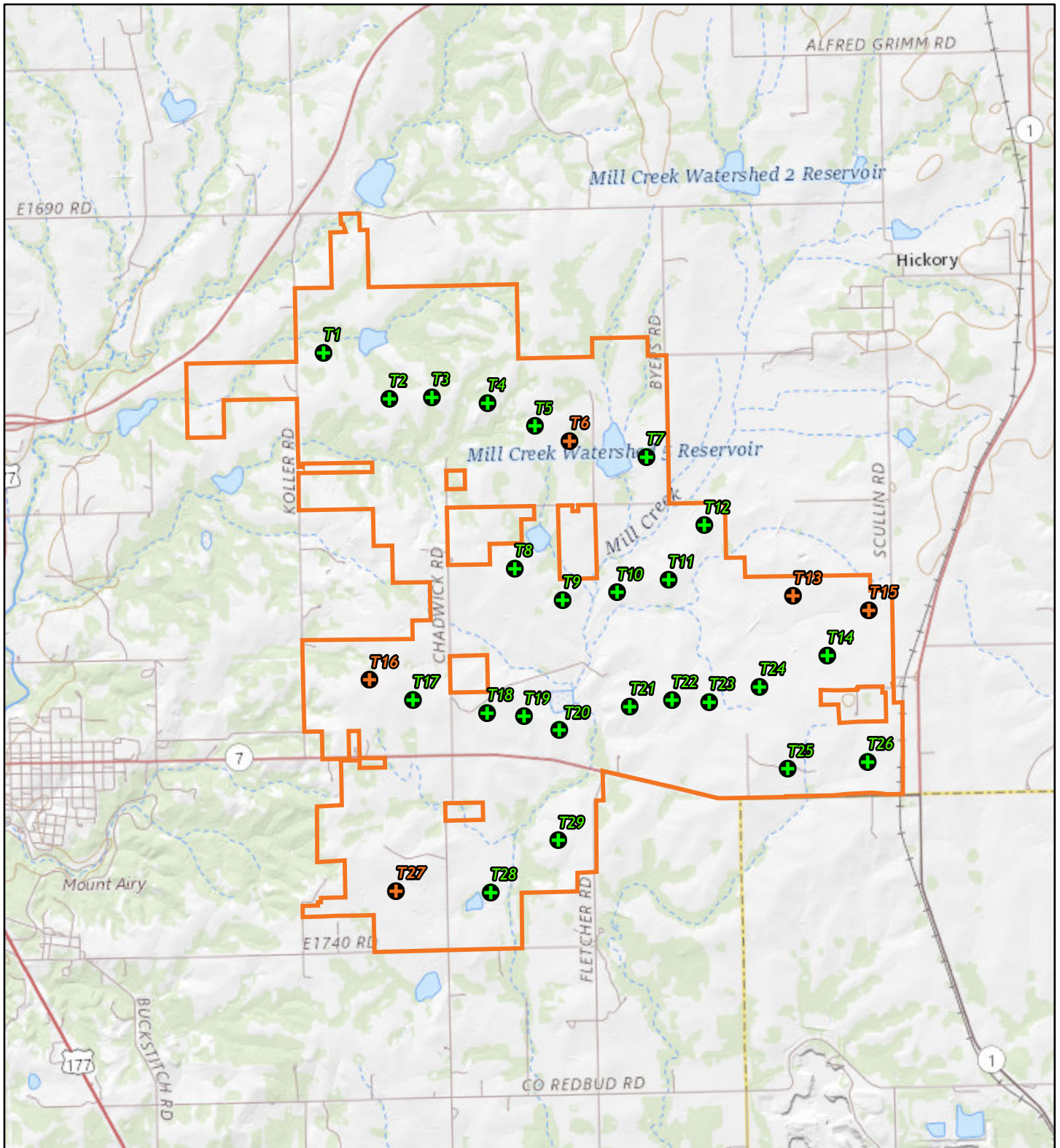
Sincerely,

A handwritten signature in black ink that reads 'Anne Marie Griger'. The signature is written in a cursive, flowing style.

Anne-Marie Griger
Permitting Manager

CC: Murray County Commissioners (via email, mcclerkjm@brightok.net)
Oklahoma Strategic Military Planning Commission (hardcopy via mail)

Structure Name	Latitude (DD-MM-SS.SS)	Longitude (DD-MM-SS.SS)	Site Elevation (ft)	Structure Height (AGL)	Requested M&L	Prior ASN
T6	34-32-29.10	96-54-00.6145	1210	682	White Paint/Synchronized Red Lights	2019-WTW-3834-OE
T13	34-31-32.7817	96-52-26.5617	1212	682	White Paint/Synchronized Red Lights	2019-WTW-3841-OE
T15	34-31-27.1569	96-51-54.3707	1220	682	White Paint/Synchronized Red Lights	2019-WTW-3843-OE
T16	34-31-06.2373	96-55-28.0790	1220	682	White Paint/Synchronized Red Lights	2019-WTW-3844-OE
T27	34-29-51.5211	96-55-18.6520	1192	682	White Paint/Synchronized Red Lights	2019-WTW-3855-OE



Project

- ⊕ Shifted Turbine (Updated Location)
- ⊕ April 2019 Layout
- Boundary

All Turbines are 682ft AGL

PROJECT	Glass Sands Wind	STATE	OK	FORMAT	Letter
TITLE	Project Overview	CODE	GSD	SCALE	1:60,000
			COORD	NAD 1983 UTM Zone 14N	



RES Renewable Energy Systems
 11101 W. 120th Ave., Suite 400
 Broomfield, CO, 80021
 Phone: (303) 429-4200
 Fax: (303) 429-4299
 power for good®