

October 4, 2016

Oklahoma Corporation Commission
P.O. BOX 52000
Oklahoma City, OK 73105

RECEIVED
PUBLIC UTILITY
DIVISION

2016 OCT 5 PM 5 02

Attn: Fairo Mitchell
Chief of Energy & Water

**RE: Public Information Meeting Regarding a Wind Farm in Beckham and Roger Mills Counties,
Oklahoma**

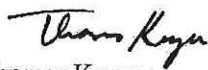
Dear Commission:

On behalf of the owners of the New Liberty Energy Center (New Liberty), this is a filing to demonstrate compliance with the requirement of the Oklahoma Wind Energy Development Act, 17 Okla. Stat. §160.21.C to hold a public information meeting in the area that would be affected by the Project, and to provide advance newspaper notice of said meeting. The public information meeting was held within 60 days of publication of our notice of intent to construct a wind farm, initially published on August 3, 2016. The public information meeting was held on September 27, 2016; newspaper notice of the meeting was published on September 15th and 16th in three local newspapers. As of the date of this notice, and based on publicly available data, New Liberty attests that the Project design complies with the setbacks required by the Wind Energy Development Act.

The Project site is located in north-central Beckham County and southern Roger Mills County, north of the city of Sayre. Notices of the public meeting were published in the *Sayre Record-Democrat* and *Elk City News* for Beckham County, and in the *Cheyenne Star* for Roger Mills County. The meeting was held in Sayre, OK, with an estimated 40 people attending. Exhibit A to this letter is a copy of the notice as provided to the newspapers. Exhibit B provides photo images of each of the three newspaper pages showing the notice and the dates of publication. Exhibit C provides reduced-size images of the posters displayed at the meeting, and a photo of the meeting is included in Exhibit D.

If you have any questions about this filing, you can reach me at the number or email below.

Sincerely,



Thomas Kruger

503-758-4539

Tom@ShadetreeConsulting.com

Exhibit A

Original Newspaper Notice

**NOTICE
OF
PUBLIC
INFORMATION
MEETING**

The owners of the New Liberty Wind Energy Project will host a public open house to provide area residents information about the development of the Project in northern Beckham and southern Roger Mills Counties, Oklahoma. The Project will be located on private lands north of Sayre, and will consist of approximately 100 wind turbine generators and associated infrastructure.

The open house meeting will be held on

September 27th from 2 to 4 PM

at the

**Western Technology Center
Sayre Vo-Tech School**

2002 NE Hwy 66, Sayre

Project representatives will be available to discuss all aspects of the Project. Please join us.

Exhibit B

Photo Images of Published Notices in:

- *Cheyenne Star*, August 15, 2016
- *Sayre Record-Democrat*, August 16, 2016
- *Elk City News*, August 16, 2016

Energy

The Okla. City Daily News • ELK CITY, Oklahoma

Friday, September 18, 2009

Area oil and gas

Completions
 29-11-21 Barnett 29-29-11-21 1H Atlanta Petroleum LLC 41090 506 2391
Drills
 18-11-14 Laton 1 7 10221 Continental Resources SW 4 22925 513 1267
Blow
 1-15-23 Perryman 1 MD 2117 Matthews Oil Co RW 4 12794 77 224
Flowing
 24-15 Carrera Energy LLC
 31-19-15 Westwood Operating
 26-17-20 Iva 1-21H JMA Energy Company NW 4 113710
 19-11-23 Rhapsodia 10-11-23 11H Enervent Operating LLC N 18225
 STEL well name, operator location, total depth, HOPS, MCF Information compiled by Dr. Richard Resources, Inc., Sayre

Energy Index ebbs and flows are signs of recovery

The marginal ups and downs of the Oklahoma Energy Index are signs of recovery in the state's oil and natural gas industry, said the economist who compiles the monthly data used to track industry growth.

The Energy Index, a measure of oil and natural gas industry activity, fell slightly to 154.8, a 1 percent decrease from the previous month's reading. Dr. Richard Evans, executive director of the Steven C. Ager Economic Research and Policy Institute, said the marginal decrease is another sign the industry has reached the bottom of its recent contraction.

"Oil and gas prices rebound

as a steady component of the Oklahoma Energy Index," said Chris Mueck, senior vice president of energy lending for Bank NMB. "With the other components showing more stability, prices in driving much of the monthly index change. We believe similar levels of price variability are likely to remain through 2010."

Despite gains in natural gas prices and drilling activity in the state, the Energy Index declined an 8 percent drop in crude oil prices and a 2 percent fall in both energy production employment and support employment.

"Market economic conditions are transiting from

a period of acute distress to recovery, with full economic health still a distant aspiration unlikely to be realized until 2014," Evans said. "A local recovery will need to be accompanied by stable national activity — a condition that cannot be taken for granted."

Bank NMB and JP Morgan Chase currently put the odds of a U.S. recession in the next 12 months at better than 25 percent, a particular concern to a state struggling to find its footing in the current commodity price cycle.

The Energy Index is a comprehensive measure of the state's oil and natural gas production necessary to establish a track industry growth rates

Rotary Rig Count					
Location	This Week		Week Ago		Year Ago
	Count	%	Count	%	
Land	485	3	492	-328	912
Inland Waters	5	0	5	1	4
Offshore	18	8	10	-13	31
United States Total	508	11	497	-349	947
Gulf Of Mexico	18	8	10	-11	29
Canada	134	-3	137	-51	185
North America	642	8	634	-391	1033
U.S. Breakout Information					
Oil	414	7	407	-238	652
Gas	92	4	88	-104	196
Miscellaneous	2	0	2	2	0
Directional	48	6	42	-33	81
Horizontal	395	1	395	-252	640
Vertical	84	4	90	-55	119
Canada Breakout Information					
Oil	74	-3	77	4	70
Gas	99	-1	60	-56	115
Miscellaneous	1	1	0	1	0
Major State Variations					
Alaska	4	0	4	-9	13
Arkansas	0	0	0	-4	4
California	0	0	0	-9	14
Colorado	19	0	19	-13	32
Kansas	0	0	0	-10	10
Louisiana	43	8	35	-30	73
New Mexico	28	-2	30	-20	48
North Dakota	28	0	28	-42	70
Ohio	14	1	13	-4	19
Oklahoma	62	-4	66	-44	109
Pennsylvania	21	0	21	-14	35
Texas	245	4	241	-121	306
Utah	5	2	3	1	4
West Virginia	18	2	8	-7	17
Wyoming	13	0	13	-11	24



Greater. Together.

At Great Plains Bank, we wouldn't be anywhere without you, our loyal customers, and we're proud to have been working together for over 100 years. We've all changed a bit over the years, and now, we've changed our logo and slogan, but we're still the same Great Plains Bank you've always known. We're just people investing in people, and we're greater... together.

Great Plains Bank
 ELK CITY

2910 W THIRD 360 225 2700
 2221 E 11TH ROAD (INSIDE WALMART) 360 225 2700
 1200 S MAIN 360 225 2211

Member FDIC GREAT PLAINS NATIONAL BANK

NOTICE OF PUBLIC INFORMATION MEETING

The owners of the New Liberty Wind Energy Project will host a public open house to provide area residents information about the development of the Project in northern Beckham and southern Roger Mills Counties, Oklahoma. The Project will be located on private lands north of Sayre, and will consist of approximately 100 wind turbine generators and associated infrastructure.

The open house meeting will be held on
September 27th from 2 to 4 PM
 at the

**Western Technology Center
 Sayre Vo-Tech School
 2002 NE Hwy 66, Sayre**

Project representatives will be available to discuss all aspects of the Project. Please join us.

**NOTICE
OF
PUBLIC
INFORMATION
MEETING**

The owners of the New Liberty Wind Energy Project will host a public open house to provide area residents information about the development of the Project in northern Beckham and southern Roger Mills Counties, Oklahoma. The Project will be located on private lands north of Sayre, and will consist of approximately 100 wind turbine generators and associated infrastructure.

The open house meeting will be held on

September 27th from 2 to 4 PM

at the

**Western Technology Center
Sayre Vo-Tech School**

2002 NE Hwy 66, Sayre

Project representatives will be available to discuss all aspects of the Project. Please join us.

er.
er.

ere without you, our
en working together
ver the years, and
but we're still the
n. We're just people
... together.

Bank

1300 S MAIN
580.225.2211

T PLAINS
NAL BANK

**NOTICE
OF
PUBLIC
INFORMATION
MEETING**

The owners of the New Liberty Wind Energy Project will host a public open house to provide area residents information about the development of the Project in northern Beckham and southern Roger Mills Counties, Oklahoma. The Project will be located on private lands north of Sayre, and will consist of approximately 100 wind turbine generators and associated infrastructure.

The open house meeting will be held on

September 27th from 2 to 4 PM

at the

**Western Technology Center
Sayre Vo-Tech School**

2002 NE Hwy 66, Sayre

Project representatives will be available to discuss all aspects of the Project. Please join us.

Exhibit C

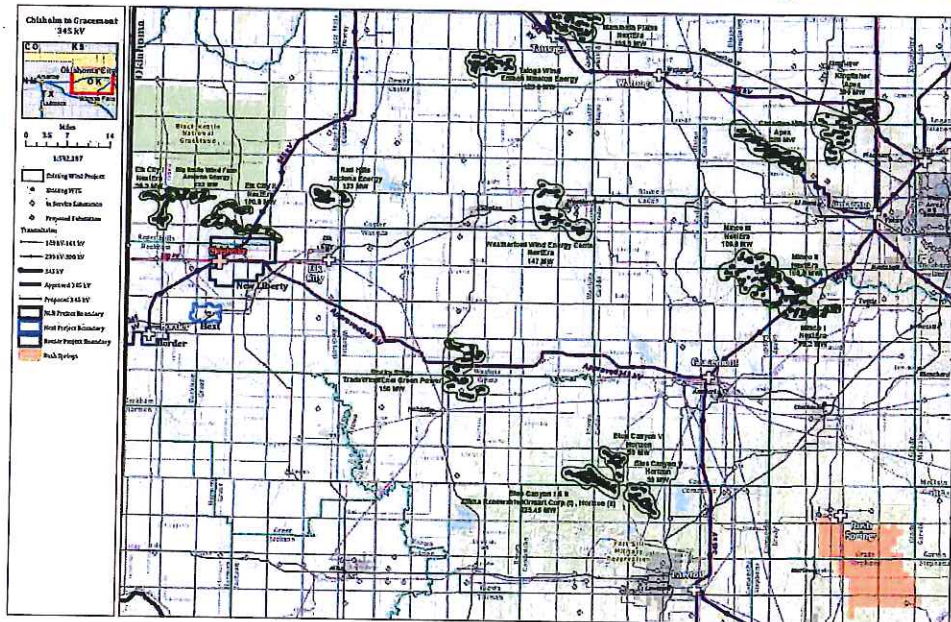
Reduced-size copies of posters displayed at public information meeting

New Liberty Wind Energy Project



Project Size: 200 MW
 Turbines: Up to 100
 COD: 2019 (estimated)
 Owner: MAP
 Status: Early-stage Development
 Substation: Chisholm 345 kV

New Liberty Wind – Endpoint of New 345 kV Line Serving Central OK



**NOTICE
OF
INTENT TO CONSTRUCT A
WIND ENERGY GENERATION FACILITY**

In October 2015, the owners of the New Liberty Wind Energy Project filed a Notice of Intent to Construct a wind energy generation facility with the Federal Aviation Administration (FAA). The Project will be located on private lands north of Sayre, in northern Beckham and southern Roger Mills Counties, Oklahoma. The Project will consist of approximately 100 wind turbine generators and associated infrastructure.

The FAA filing, shown below, represents a preliminary conceptual project layout. Turbine locations are subject to change as the project matures toward construction.

Pursuant to the Oklahoma Wind Energy Development Act (O.S. 17-160) Section 21, notice of the FAA filing was provided to the Oklahoma Corporation Commission and the Beckham and Roger Mills County Commissioners in February 2016.

A public information meeting will be held in the near future to provide area residents information about the development of the Project.

Oklahoma Wind Energy Development Act

The Wind Energy Development Act (Okla Statutes 17-160) is triggered by the filing with the FAA, and requires:

- Notice to the Oklahoma Corporation Commission (OCC) and affected Counties
- Newspaper publication of our notice of intent to construct a wind farm; and documentation of publication submitted to OCC
- A public information meeting, along with newspaper publication announcing the meeting; and documentation submitted to OCC

The Act also requires a setback for wind turbines of 1.5 nautical miles from an airport, hospital, or public school.

New Liberty Wind Energy Project

Developed by

Arrowhead Wind Energy

Arrowhead Wind Energy (AWE) is a joint venture formed in 2007 between two long-time partners, Arrowhead Resources and MAP, focused on wind development in Western Oklahoma.

AWE benefits from the resources provided by:



– Arrowhead's unique local resources, its deep expertise in land and title issues from long history in oil and gas, and strong regional relationships with business and local government bodies.



– MAP's strength in financing, extensive network of partners and experience in the renewable energy industry. MAP is one of the oldest and most successful private energy investors in the US, with more than 25 years of experience managing 15 partnerships (~\$2.1 billion in committed capital). MAP has funded and developed more than 9,000 MW of operating wind projects – equaling more than 10% of total installed wind energy facilities in the US.

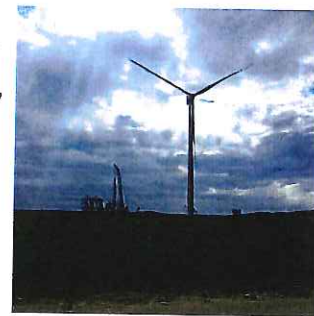
In the past 15 years MAP has invested ~\$400 million in natural gas and wind energy development projects in the state of Oklahoma. Wind energy projects developed in partnership with Arrowhead include:

Bluestem – Beaver County



Project Size: 198 MW
 COD: 2016
 Owner: Exelon Generation
 Status: Under Construction
 Offtake: Google
 Turbine: Vestas V-117
 Sold to RES in September 2008

Great Western – Woodward and Ellis Counties



Project Size: 225 MW
 COD: end of 2016
 Owner: EDF Renewable Energy
 Status: Under Construction
 Offtake: Google
 Turbine: Vestas V-100 and V-117
 Sold to EDF February 2015

North Rim – Beckham County



Project Size: 300 MW
 Anticipated COD: end of 2017
 Owner: Apex Renewables
 Status: Pre-construction
 Offtake: Various
 Turbine: In negotiation
 Substation: Border 345 kV
 Sold to Apex in December 2014

Mammoth Plains – Dewey County



Project Size: 199 MW
 COD: 2014
 Owner: NextEra Energy
 Status: Operating
 Offtake: SP5/Xcel
 Turbine: GE 1.7-100
 Sold to NextEra July 2013

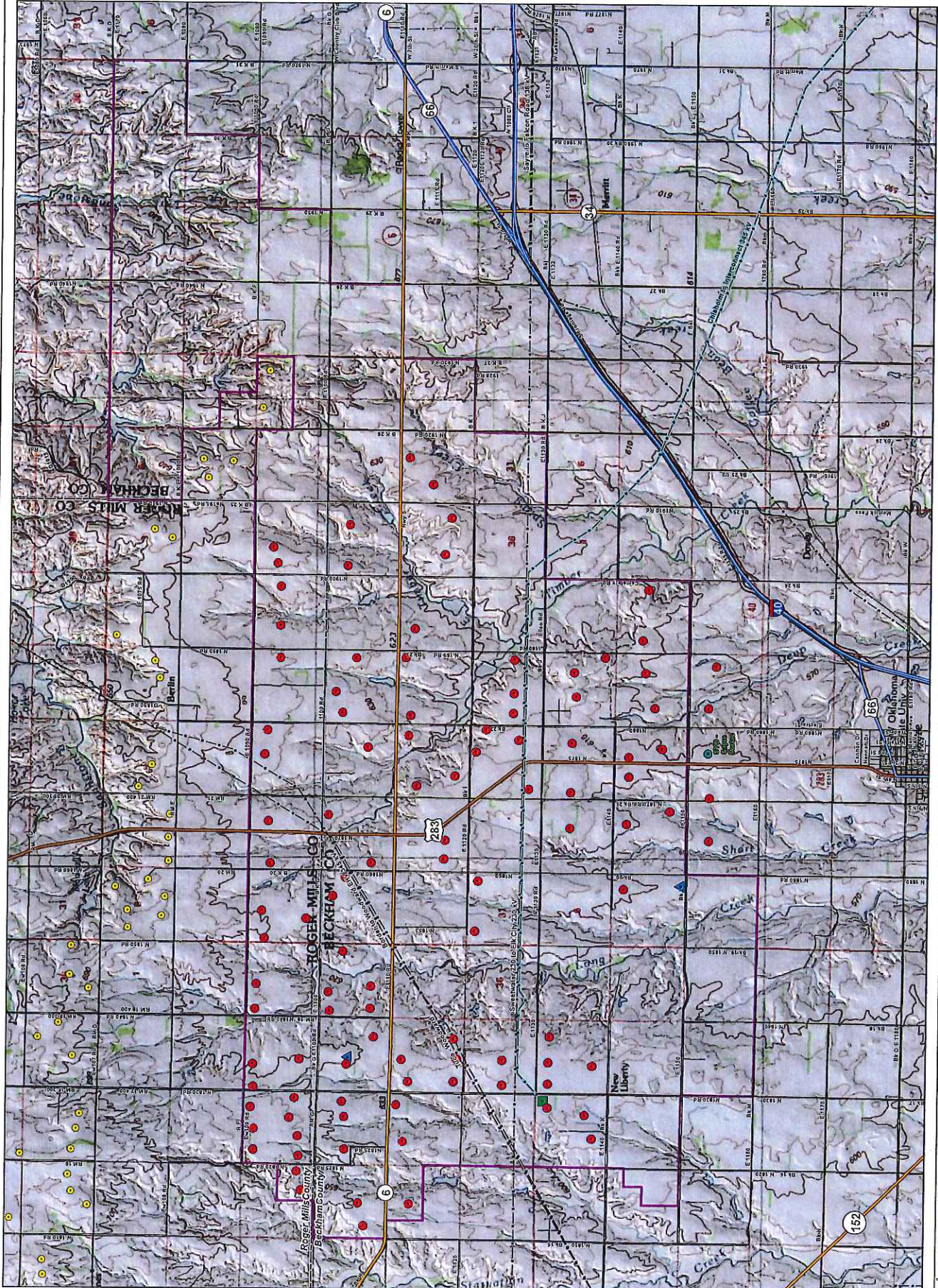
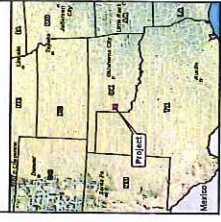
Crossroads – Dewey County



Project Size: 228 MW
 COD: 2012
 Owner: OG+E Energy
 Status: Operating
 Offtake: OG+E Energy
 Siemens 2.3-101
 Sold to OG&E August 2010

**New Liberty
Wind Energy Project
Wind Turbine Layout**
200 MW
Beckham and Roger Mills Counties, OK
September 20, 2016

- New Liberty_Boundary
- Turbines Filled with FAA
- ▲ Met Tower
- Chickahom Substation (Proposed)
- Sayre Vortec
- Existing Turbines
- Transmission Line (In Service)
- - - Transmission Line (Proposed)
- Interstate
- US Route
- State Route
- County Boundary



Scale: 1" = 1/4 Mile
 Date: 9/20/16
 Project: New Liberty Wind Energy
 Author: [Name]
 Title: [Title]
 Revision: [Number]

Exhibit D

Photo of meeting

