

WELCOME

INVOICING

Appears the invoice is hitting a lot of firewalls and going to SPAM or JUNK

Do not worry we will get your money.

STAFF

- Terra Wright
- Vince Eitzen
- Casey Roberts
- Bruce Campbell
- Billy Anglin
- Randy Snyder

STUPERVISORS

KELLY PHELPS

RANDY SNYDER

JOHN HARPER

NOPV SIGNER

DENNIS FOTHERGILL

MANAGER PIPELINE SAFETY

**THOSE WHO RUN THE
DEPARTMENT**

JANICE McLAUGHLIN

BROOKE WOOD



OKLAHOMA
Corporation
Commission

**2022 OCC PIPELINE
SAFETY EXCAVATION
DAMAGE UPDATE**



**STEPHENS COUNTY –NO
INJURIES—OTHER THAN PRIDE**





OCC CHANGES OF OPERATORS 8-2019

Pipeline operators are required to inform the excavator of the size of pipe and material of pipe.

This is not always occurring—how often do you note it if marking on ground

This can be accomplished several ways:

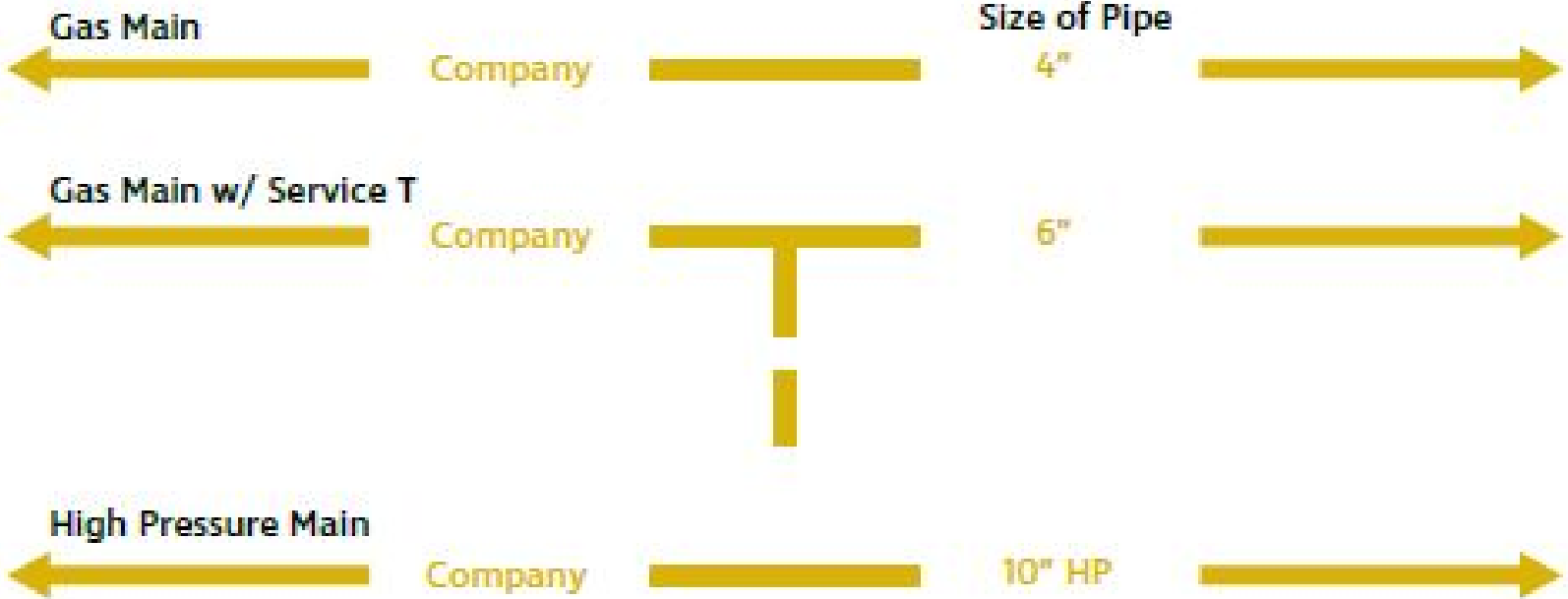
Email excavators

Mark it on the ground

Mark it on the locate flags

THINGS TO AND NOT TO CONSIDER FOR ALL UTILITY OPERATORS

Gas / Oil / Steam / Petro



No Conflict / Clear Marking



CLR

DEFINITION OF DAMAGE

142.2 Defines “Damage”

“Damage” means any impact upon or removal of support from an underground facility as a result of explosion, excavation or demolition which according to the operating practices of the operator of the underground facilities would necessitate the repair thereof

Hydro vac knocking off asphalt coating—is it damage?

EFFECTIVE NOVEMBER 1, 2021

§63-142.6. Notice of proposed demolition, explosion or excavation - Marking or providing location of facilities - Emergencies.

When an excavator has actual knowledge that an operator has unmarked hydrocarbon and hazardous liquid underground facilities within the area of proposed excavation, the excavator shall not commence excavation or demolition until notice has been given and such facilities have been marked.

An excavator must check for positive response at the notification center prior to excavating or demolishing to ensure that all operators have responded and that all facilities that may be affected by the proposed excavation or demolition have been marked.

Notice shall expire **fourteen (14) calendar days** from the excavation start date. No excavation may continue after the fourteenth day unless subsequent notice has been submitted pursuant to notice requirements. If excessive and unreasonable requests for marking are made by an excavator when no excavation is taking place within fourteen (14) calendar days, **the excavator may be liable to the owner or operator for the reasonable cost of such marking.**

EFFECTIVE NOVEMBER 1, 2021

§63-142.6. Notice of proposed demolition, explosion or excavation - Marking or providing location of facilities - Emergencies.

If requests for emergency locates are made by an excavator when there is no emergency, the excavator may be liable to the owner or operator for the reasonable cost of emergency response.

§63-142.9. Damage to underground facilities.

- A. When **any** damage occurs to an underground facility or its protective covering, **the operator thereof and the notification center shall be notified** immediately by the excavator who caused the damage.

As an excavator you will need to acquire a phone number for operators in the event of damage

§63-142.9. Damage to underground facilities.

- B. Upon receiving notice of such damage, the operator shall promptly dispatch personnel to the location to effect temporary or permanent repairs.
- C. Should damage occur that endangers life, health or property, any person responsible for the work shall keep all sources of ignition away from the damaged area and shall take immediate action to protect the public and property and to minimize the hazard until arrival of the operator's personnel or until the appropriate police or fire officials shall have arrived and taken charge of the damaged area.
- D. An excavator shall delay any backfilling in the immediate area of the damaged underground facilities until the damage has been repaired, unless the operator authorizes otherwise. The repair of such damage must be performed by the operator or by qualified personnel authorized by the operator.

EFFECTIVE MAY 16, 2022

PLS has excavation damage authority of:

All regulated Liquid Pipelines

All Gas Transmission

All Gas Distribution

Type A, B, C Gathering Pipelines



At a minimum excavators must

- *Call before you Dig...*

Dial 811 48 hours prior to excavation-weekends, holidays, date of notification do not count

- *Wait the Time...*

Members will respond and mark the **approximate** location of their facilities.

- *Respect the Marks...*

Protect the marks during the course of the excavation.

- *Dig with Care...*

Protect all utilities during excavating. Do not backfill if damages occurs. If it does not look safe do not dig!

EFFECTIVE 10-1-2021

CHP 20

Operators will now be required to notify the OCC of any excavation damage occurring to gas distribution **mains**, gas transmission pipelines, gas gathering pipelines and hazardous liquid pipelines that exceeds Ten Thousand dollars (\$10,000) in property damage. Property damage shall include cost to excavator, operator, property owner and lost product.

DO HAVE CHANGES COMING

EFFECTIVE 10-1-2021

CHP 20

When 1800-1900 excavation damages are reported to PHMSA Via annual reports and only a handful meet the requirements to investigate

PHMSA WILL NOT BE HAPPY

CHANGES TO REPORTING REQUIREMENTS ARE REQUIRED

CHP 20 Proposed changes

At the earliest practicable moment following discovery, but no later than one hour after confirmed discovery, each operator must give notice in accordance with paragraph (b) of this section of excavation damage occurring to gas distribution **mains** pipelines, gas transmission pipelines, gas gathering pipelines and hazardous liquid pipelines ~~that exceeds Ten Thousand dollars (\$10,000) in property damage . Property damage shall include cost to excavator, operator, property owner and lost product.~~

EFFECTIVE 10-1-2021

CHP 20

With changes it will take more investigators

Proposing 4 investigators

2 in Tulsa, 2 in OKC

1 supervisor



All other inspectors can help based on work load.

OCC RULE 165:20-17-5. EMERGENCIES

An excavator shall immediately call the local 911 emergency telephone number and report any incident that results in an unintentional and uncontrolled release of flammable, toxic or corrosive gas or liquid from a pipeline or pipeline system.

SEMIANNUAL REPORTING OF **ALL** DAMAGES

(c) The report referenced in paragraph (b) can be submitted on a **spreadsheet**, single pages for each occurrence of excavation damage, or if the operator participates in the Common Ground Alliance's Damage Reporting Tool (DIRT) they may submit a copy of the report which reflects their data.

(d) If no damages have occurred during the reporting period, a report is still required indicating “No Damages Occurred”.

OCC CHANGES OPERATORS



(e) Reports can be submitted via

TRPipelinesafety@occ.ok.gov.

(f) Should any of the information required in 165:20-17-8(a) is not available, the operator shall, prior to the next semiannual report, supply the missing data. If the information is not available, an explanation of what steps were taken to secure the information must be supplied.

OCC CHANGES OPERATORS

A report is required for each operator

If your company has multiple companies

Report for that company on an individual sheet

New form is in place—it requires an email address

OCC CHANGES OPERATORS

Effective 10-1-2021

Semiannual reports are now due

March 1 for damage occurring July-December of
previous year

September 1 for damages occurring Jan-June of
current year

Operators—Please mark your calendar

ENFORCEMENT PROCESS

They are reviewed to determine if the excavator or operator contributed to multiple damages. If so, further enforcement may occur

For Operators—already have a process in place

ENFORCEMENT PROCESS

EFFECTIVE NOVEMBER 1, 2021

Excavator and Operator are subject to civil penalties

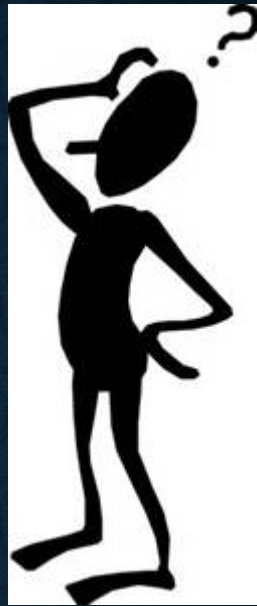
\$200,000.00 per day not to exceed \$2,000,000.00

HE SAYS SHE SAYS

Documentation—

Pictures, Pictures, Pictures-for Operator and Excavator

Get a good reference point—just taking a photo is not always the best.



One call law changes effective 11-1-19

ALL NOW HAVE TO MAKE A ONE CALL REQUEST WHEN WORKING IN A PUBLIC OR PRIVATE EASEMENT OR RIGHT OF WAY—EXEMPTIONS ARE STILL IN PLACE:

ANY FORM OF CULTIVATION FOR AGRICULTURAL PURPOSES—

BURYING A DEAD ANIMAL

ROUTINE MAINTENANCE—ROAD MAINTENANCE

WORK BY A PUBLIC AGENCY OR ITS CONTRACTORS ON A PRE-ENGINEERED PROJECT

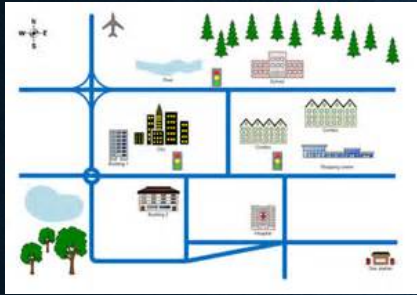
WORK ON A CERTIFIED PROJECT

WORK ON A PERMITTED PROJECT

OPENING OF A GRAVE IN A CEMETERY

SOLID WASTE DISPOSAL SITE WHICH IS A PRE-ENGINEERED PROJECT

ANY INDIVIDUAL EXCAVATING ON HIS OR HER OWN PROPERTY AND WHO IS NOT IN THE EXCAVATING BUSINESS FOR HIRE, EXCEPT IN A PRIVATE OR PUBLIC EASEMENT OR RIGHT-OF-WAY, --**IF GRANDMA IS PLANTING FLOWERS AT HER GAS METER SHE HAS TO CALL**



CHANGES TO EXCAVATORS

Senate Bill 1225—November 2020

Limits locate requests length

not to exceed five hundred (500) linear feet in incorporated areas or one linear mile in unincorporated areas, of the proposed work;

COMPLAINTS



We investigate complaints of the following:

OPERATORS NOT LOCATING TIMELY

REQUIRING 2 & 3 NOTIFICATIONS TO BE MADE

SO CALLED ARRANGEMENTS MADE BETWEEN

OPERATOR & EXCAVATOR—DOCUMENTED,

BUT DID NOT OCCUR

REGULATED PIPELINE DATA IN MILES

Gas Distribution—36069

Distribution Services—1.2 Million

Gas Gathering—715

Type C gathering 20,000

Type R Gathering 55,000

Gas Transmission—6300 Intrastate, 5500 Interstate

Landfill-20

Hydrogen-1.5

Liquid-5400 Intrastate, 9300 Interstate



REGULATED PIPELINE DATA IN MILES

Exploration & Production Operators—100 new operators

Non-regulated gathering—have not completed

3rd party Inputs—Several declined to provide info—confidentiality issues—may get a request from our general council

OKLAHOMA EXCAVATION DATA

1.5 million locates on pipeline per year

800000 locates on distribution piping

1800-1900 damages per yr

1st party damage occurs—WHY?

Mainly gas distribution issue--no locate made, cannot
locate poly and probing rods

OKLAHOMA EXCAVATION DATA

January-June 2022

985 excavation damages

Operator error- 234 damages (could not locate or find, locate made, but not sufficient, facility not located)

Excavator error-252 damages (no locate ticket made)

2021 DIRT Report

Root cause analysis continues to paint a very clear picture. The vast majority of damages are caused by : (1) digging without notification to the one call center/811; (2) excavators failing to pothole and failing to maintain sufficient clearance between digging equipment and buried facilities; and (3) facilities not being marked or being marked inaccurately due to locator error and/or incorrect facility records/maps.

QUESTIONS

LIAISON

**192 & 195 REQUIRE
OPERATORS TO
ESTABLISH LIAISON
WITH APPROPRIATE
EMERGENCY PERSONNEL**

**IN THE PAST THE DEPARTMENT
HAS REQUIRED OPERATORS TO
MAKE 3 ATTEMPTS TO
ESTABLISH LIAISON**

**OPERATORS INVITE THE
EMERGENCY OFFICIAL TO LIAISON
MEETING—THEY DO NOT SHOW**

**OPERATORS CONTACT
EMERGENCY OFFICIAL AND ASK TO
PERFORM A FACE TO FACE—THEY
DECLINE**

**OPERATORS MAIL ALL THE INFO
TO THE EMERGENCY OFFICIAL
REQUESTING THEM TO PROVIDE
INFO TO YOU VIA A CAPABILITY
SURVEY—THEY REFUSE**

**LIAISON HAS NOT BEEN
ESTABLISHED**

**NOPV TO OPERATORS ARE
COMING????**

HELPFUL RESOURCES

CLEET

DEPARTMENT OF HOMELAND SECURITY

LEPCS

Oklahoma State Firefighter Association

Might take Legislation requiring some agency to
maintain.

**WE HAVE ENCOURAGED
DIFFERENT GROUPS TO SHARE
THEIR LIAISON INFO**

DO NOT THINK THIS IS OCCURRING

ONLY MAKES SENSE

**OPERATORS HAVE TO ESTABLISH
LIAISON**

SEE FACE TO FACE COMING BACK

**IT IS ACCEPTABLE TO CAPTURE
INFO FOR YR 1**

**CALL YR 2 & 3 VERIFYING EO
INFO**

**RECAPTURE INFO FOR YR 4/1
CONTINUE PROCESS**

QUESTIONS

NPMS CONCERNING LIQUID OPERATORS

BIG PROBLEMS FOR STATE INSPECTORS AND OPERATORS

**SOME PHMSA
INSPECTORS STILL HAVE
ACCESS TO ECO & DW
STATES DO NOT**

**SO IN OKLAHOMA-
EVERY SQUARE INCH
IS IN AN USA
PROVE ME WRONG**

**A LIST OF
ENDANGERED/THREATENED
ANIMALS IN OKLAHOMA**

**YOU NEED TO CHECK BY
PIPELINE SPECIFIC**

1 Find location

2 Define area

3 Confirm

Verify the area where project activities will occur

Modify the shape by clicking and dragging the vertices or clicking on a solid vertex to remove it

AREA: 69968.07 mi²

CONTINUE

START OVER



Resources

ENDANGERED SPECIES 25

CRITICAL HABITATS 6

MIGRATORY BIRDS !

COASTAL BARRIERS

FACILITIES 11

WETLANDS !

PRINT RESOURCE LIST

What's next?

Define a project at this location to evaluate potential impacts, get an official species list, and make species determinations.

DEFINE PROJECT

Endangered species

Listed species[?] and their critical habitats are managed by the [Ecological Services Program](#) of the U.S. Fish and Wildlife Service (USFWS) and the fisheries division of the National Oceanic and Atmospheric Administration (NOAA Fisheries[?]).

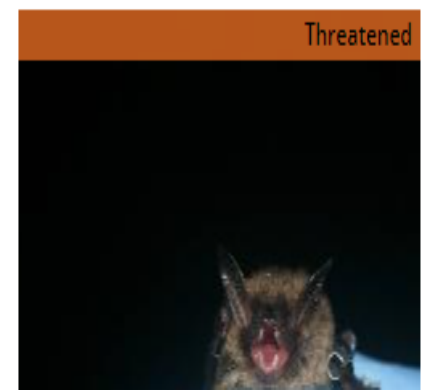
Species and critical habitats under the sole responsibility of NOAA Fisheries are **not** shown on this list. Please contact [NOAA Fisheries](#) for [species under their jurisdiction](#).

Additional information on endangered species data is provided [below](#).

The following species are potentially affected by activities in this location:

THUMBNAILS LIST

Mammals



Mammals

Endangered



Gray Bat

Myotis grisescens
Wherever found

Endangered

CH



Indiana Bat

Myotis sodalis
Wherever found

Threatened



Northern Long-eared Bat

Myotis septentrionalis
Wherever found

Endangered



Ozark Big-eared Bat

Corynorhinus (=Plecotus) townsendii
ingens
Wherever found

Birds

Threatened



Eastern Black Rail

Laterallus jamaicensis ssp. *jamaicensis*
Wherever found

Threatened



Piping Plover

Charadrius melodus

CH

Threatened



Red Knot

Calidris canutus rufa
Wherever found

CH

Endangered



Red-cockaded Woodpecker

Picoides borealis
Wherever found

Endangered



Whooping Crane

Grus americana

CH

Reptiles



American Alligator

Alligator mississippiensis

Wherever found

Similarity of Appearance (Threatened); A species that is threatened due to similarity of appearance with another listed species and is listed for its protection.

Fishes

Threatened

CH



Arkansas River Shiner
Notropis girardi

Threatened

CH



Leopard Darter
Percina pantherina
Wherever found

Threatened



Neosho Madtom
Noturus placidus
Wherever found

Threatened



Ozark Cavefish
Amblyopsis rosae
Wherever found

Endangered

CH



Peppered Chub
Macrhybopsis tetranema
Wherever found

Clams

Endangered

CH



No photo available

Neosho Mucket

Lampsilis rafinesqueana

Wherever found

Endangered



No photo available

Ouachita Rock Pocketbook

Arcidens wheeleri

Wherever found

Threatened

CH



Rabbitsfoot

Quadrula cylindrica cylindrica

Wherever found

Endangered



No photo available

Scaleshell Mussel

Leptodea leptodon

Wherever found

Proposed Threatened

CH



No photo available

Western Fanshell

Cyprogenia aberti

Wherever found

Endangered



Winged Mapleleaf

Quadrula fragosa

Insects

Threatened



American Burying Beetle
Nicrophorus americanus


Candidate



Monarch Butterfly
Danaus plexippus
Wherever found

Resources

ENDANGERED SPECIES	25
CRITICAL HABITATS	6

MIGRATORY BIRDS 

COASTAL BARRIERS

FACILITIES 11

WETLANDS 

 PRINT RESOURCE LIST

What's next?

Define a project at this location to evaluate potential impacts, get an official species list, and make species determinations.

[DEFINE PROJECT](#)

- Do not forget Endangered Species apply to endangered plants also.

QUESTIONS