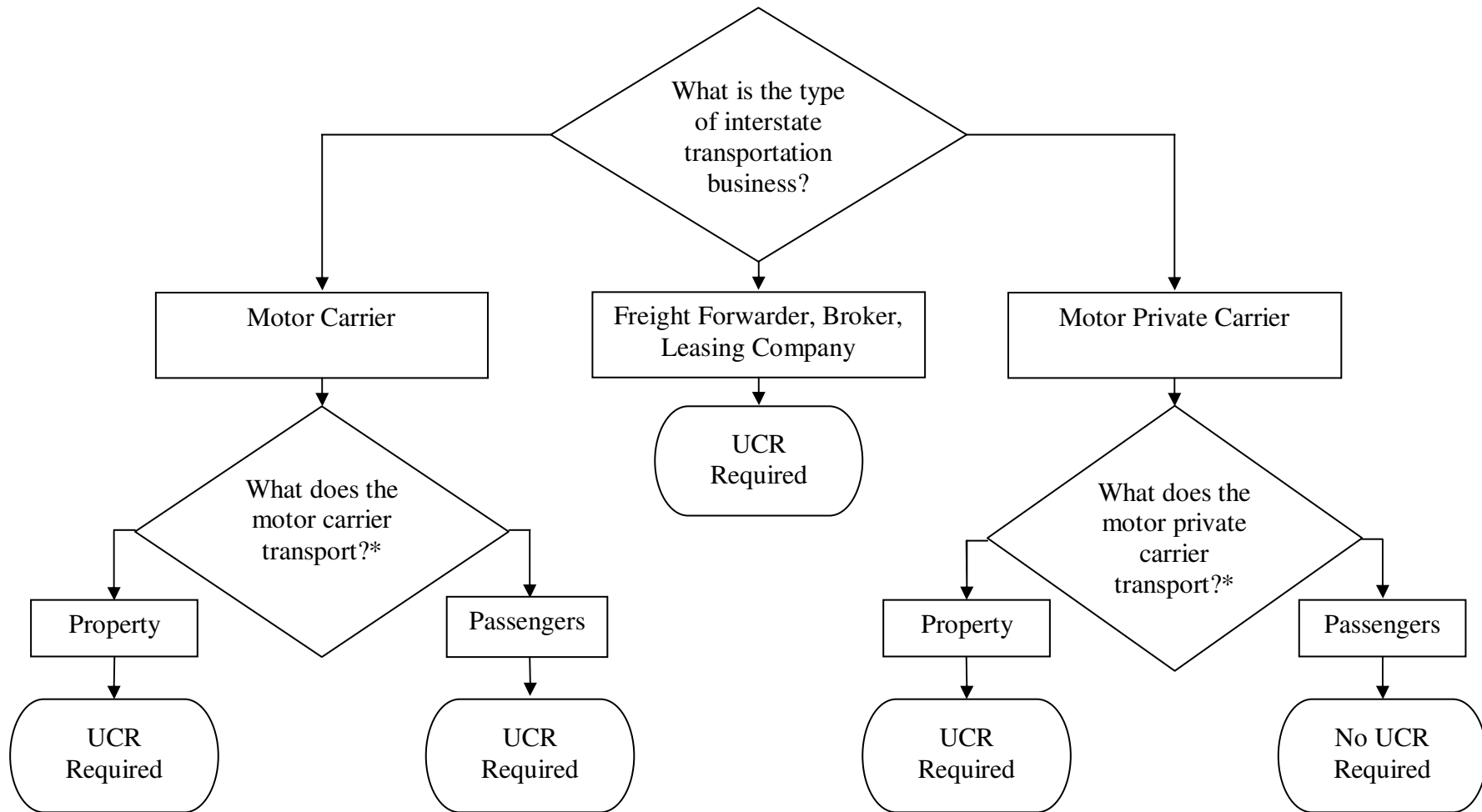


Who is subject to the UCR?



*Types of transportation not subject to UCR.

1. Transportation by the federal, state, county, or city governmental agency; or an Indian tribe (a sovereign nation).
2. Transportation in response to a declared emergency by a state governor when the declaration also sets aside the UCR requirements.
3. Transportation by an emergency first responder; for example, fire trucks, ambulances and other emergency vehicles.

Note: Beginning in the calendar year 2009, trash haulers are subject to UCRA.