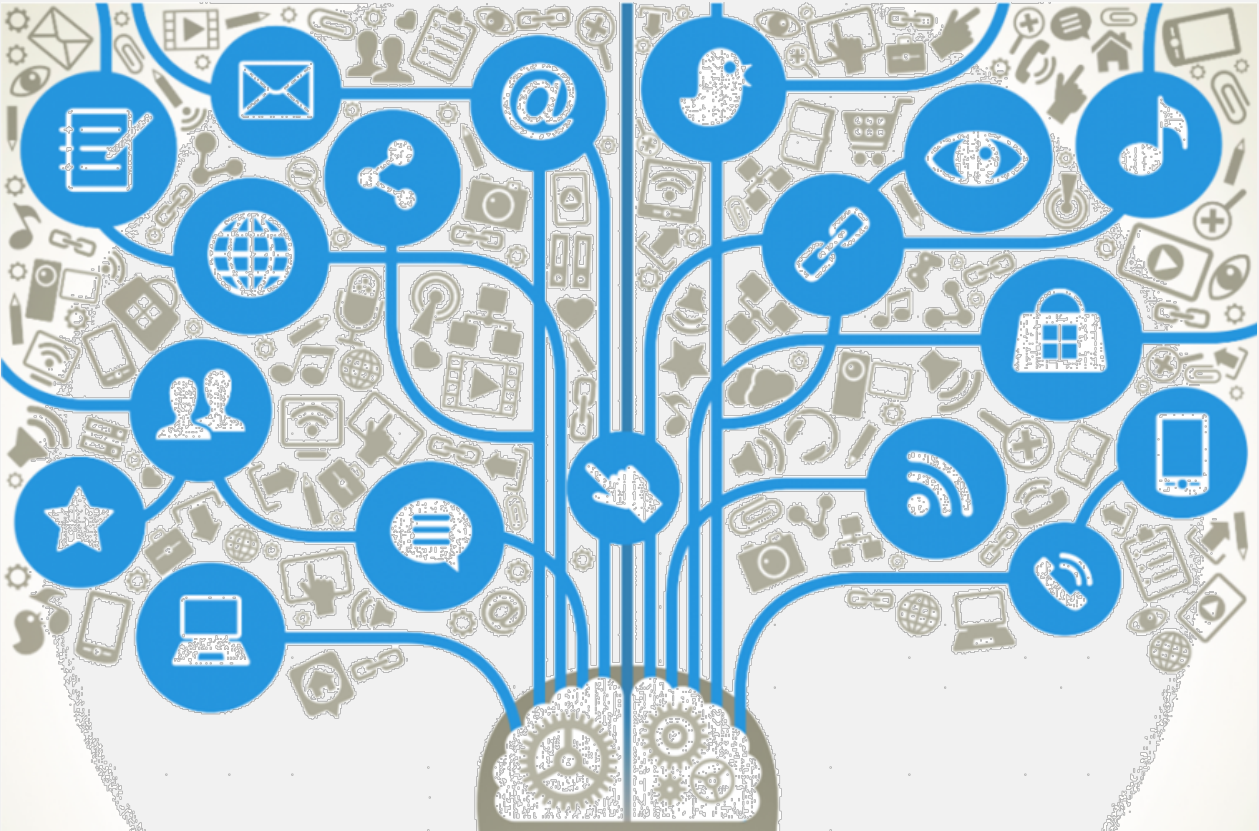


Data and Data Sources



Data and Data Sources

Consumption data

- Use (current use, lifetime, etc.)
 - OPNA survey
 - <http://www.bach-harrison.com/okdataquerysystem/Default.aspx>
 - Youth Risk Behavior Surveillance System (YRBSS)
 - <http://www.health.state.ok.us/ok2share/>
 - Behavioral Risk Factor Surveillance System (BRFSS)
 - <http://www.health.state.ok.us/ok2share/>
 - Adult/Youth community survey
 - Oklahoma Poison Control
 - The National Survey on Drug Use and Health (NSDUH)
 - <https://www.samhsa.gov/data/population-data-nsduh>

Data and Data Sources

Consequence data

- Drug dependence or abuse
 - Oklahoma Inpatient Hospital Discharge Data
 - Request from ODMHSAS
 - ODMHSAS treatment data query
 - <http://www.odmhsas.org/eda/query.htm>
 - The National Survey on Drug Use and Health (NSDUH)
 - <https://www.samhsa.gov/data/population-data-nsduh>
- Death data
 - National Vital Statistics available on CDC Wonder
 - <https://wonder.cdc.gov/>
 - Oklahoma Vital Records (No prescription drugs data)
 - <http://www.health.state.ok.us/ok2share/>
 - Medical Examiner Reports
 - OSDH, Injury Prevention Services

Data and Data Sources

Consequence data

- Motor vehicle crashes
 - Oklahoma Highway Safety Office (OHSO)
 - <http://ohso.ok.gov//>
 - National Highway Traffic Safety Administration Fatality Analysis Reporting System(FARS)
 - <https://www.nhtsa.gov/research-data/fatality-analysis-reporting-system-fars>
- Crime/Arrest
 - Local Police Station
 - Oklahoma State Bureau of Investigation (OSBI)
 - <https://www.ok.gov/osbi/>
 - FBI Uniform Crime Reporting (UCR)
 - <https://ucr.fbi.gov/>

Data and Data Sources

Consequence data

- Citations and convictions
 - County court clerk
 - Specify statutes for criminal charges



Indicators and Sources (Example)

Consumption	
Indicator	Source
Past 30 day Any Prescription Drug Misuse	OPNA Survey
Past 30 day Alcohol Misuse	OPNA Survey
Consequence	
Indicator	Source
Crashes Involving Medication (All Ages)	OHSO
Alcohol Related Arrests (under age 21)	OSBI
Opioid Analgesic Deaths (Ages 12 and up)	CDC Wonder
Inpatient hospital discharge	ODMHSAS
Intervening Variables	
Indicator	Source
Perception of Risk/Harm	OPNA Survey
Perception of Parental Disapproval of Alcohol Use	OPNA Survey
Number of opioid analgesic prescriptions	PMP/ODMHSAS

Indicators and Sources (Example)

Consumption	
Indicator	Source
Past 6 month Any Prescription Drug Misuse	Community Adult Survey
Past Year Any Prescription Drug Misuse	Community Adult Survey
Lifetime Any Prescription Drug Misuse	Community Adult Survey
Consequence	
Indicator	Source
Pharmaceutical Drug-related Poisoning Deaths (Ages 12+)	OK/CDC – Prevention Vital Statistics
Prescription Drug-related Crimes	UCR/OSBI
Prescription Drug-related Emergency Room Visits (Ages 12+) Nonfatal	Local ERs where available
Alcohol Related Arrests (under age 21)	OSBI

Death Data

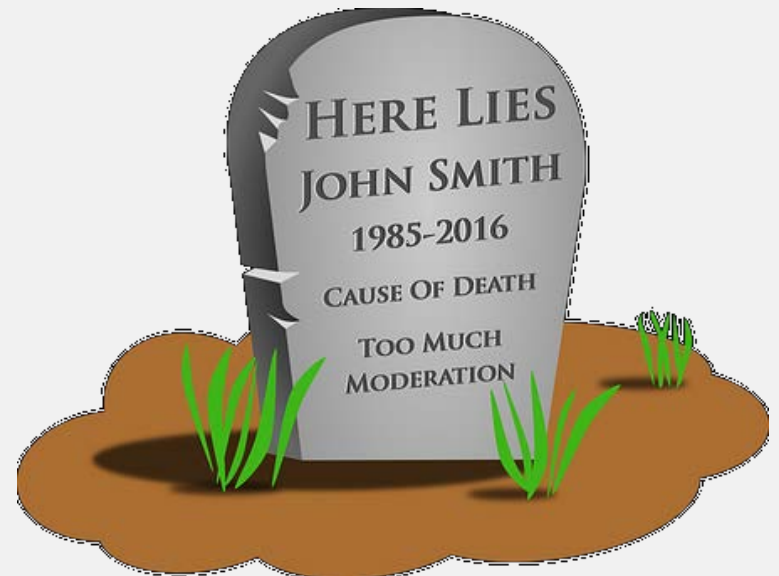
Prescription opioid related deaths

- National Vital Statistics

– <https://wonder.cdc.gov/>



Prescription
d related mortalit



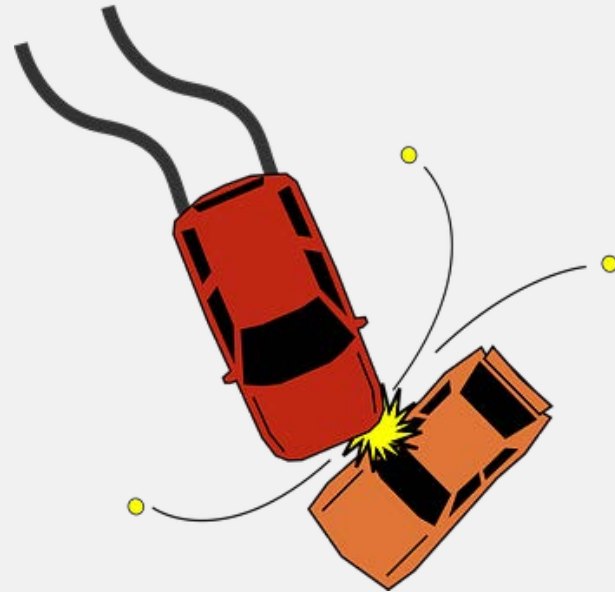
Motor Vehicle Crash Data

Drug-related crashes

- Oklahoma Highway Safety Office (OHSO)
 - <http://ohso.ok.gov//>



Drug-related
crashes



Crime or Arrest Data

- Local police data
- Oklahoma State Bureau of Investigation (OSBI)
 - <https://www.ok.gov/osbi/>



Crime data and
how to obtain them



Questions or suggestions??

Contact Information

Vi Pham, MPH

REOW Coordinator

Oklahoma Department of Mental Health
and Substance Abuse Services

405-248-9153

vi.pham@odmhsas.org

Please complete the
evaluation form



Oklahoma Department of Mental Health
and Substance Abuse Services

Our Mission: To promote healthy
communities and provide the highest
quality care to enhance the well-being
of all Oklahomans.