

SELECTING A PRIORITY DRIVEN BY DATA

Oklahoma Prevention Leadership Council

July 13, 2010

The Process



- The SEOW had its first post-award meeting January 20, 2010
- Three subgroups convened February 5, 2010 and February 25, 2010
- Alcohol, Illicit Drugs, and Prescription Drugs
- Consultants

The Process Cont.



□ Data Source Consideration

1. National Source
2. Availability at State level
3. Validity
4. Trend
5. Consistency

The Process Cont.



- At the second workgroup meeting, the groups were presented with indicators for each substance.
- Selection of indicators.
- Indicators met the criteria for data source consideration.
- No indicators were given for prescription drugs.

The Process Cont.



- ❑ National Survey on Drug Use and Health - NSDUH
- ❑ Youth Risk Behavior Survey - YRBS
- ❑ Behavioral Risk Factor Surveillance System - BRFSS
- ❑ Pregnancy Risk Assessment Monitoring System - PRAMS
- ❑ Alcohol Epidemiologic Data System - AEDS
- ❑ National Vital Statistics System - NVSS
- ❑ Fatality Analysis Reporting System - FARS
- ❑ Unified Crime Report - UCR

The Process Cont.



- The workgroups were shown a numeric way to assign values to each indicator.
- Rate ratios were done to compare Oklahoma with the nation.
- Linear Regression was performed to assess a time trend.

Results



- Prescription Drugs - 9.43
- Alcohol - 3.54
- Illicit Drugs - 2.75

Noteworthy Finding



- Inhalant use

YRBS

2003 - 9.9%

2005 - 12.0%

2007 - 11.7%

2009 - 12.7%

NSDUH

2006-2008 use among 12 year-olds:
6.9%

ODMHSAS

Creating Healthier Oklahoma Communities

Alcohol



		ALCOHOL CONSEQUENCE							
CONSTRUCT	MEASURE	SOURCE	YEAR						
			2003	2004	2005	2006	2007	2008	
ALCOHOL-RELATED MORTALITY	Rate per 100,000 population of deaths from chronic liver disease	NVSS	OK	9.4	10.3	11.3	12.4		
			Nation	9.3	9.0	9.0	9.2	9.7	
		Rate Ratio	1.01	1.14	1.26	1.35			
	Rate per 100,000 population of deaths from suicide	NVSS	OK	13.6	14.4	14.7	15.0		
			Nation	10.8	11.0	10.9	10.9		
		Rate Ratio	1.26	1.31	1.35	1.38			
Rate per 100,000 population of deaths from homicide	NVSS	OK	6.4	6.3	6.1	6.3			
		Nation	6.1	5.9	6.0	6.2			
	Rate Ratio	1.05	1.07	1.02	1.02				
MOTOR VEHICLE CRASHES	Percentage of fatal crashes with an alcohol-impaired driver	FARS	OK	31.3	29.1	29.3	28.0	29.0	31.6
			Nation	30.3	30.4	31.1	31.4	31.5	31.4
		Rate Ratio	1.03	0.96	0.94	0.89	0.92	1.01	
CRIME	Number of violent crimes (aggravated assaults, sexual assaults, and robberies) reported to police	UCR	OK			508.6	497.4	499.6	526.7
			Nation			469.0	473.6	466.9	454.5
		Rate Ratio			1.08	1.05	1.10	1.20	
DEPENDENCE OR ABUSE	Percent of persons aged 12 and older meeting DSM-IV criteria for alcohol abuse or dependence	NSDUH	OK	6.9	7.4	7.9	7.4	6.9	
			Nation	7.5	7.8	7.7	7.6	7.5	
		Rate Ratio	0.92	0.95	1.03	0.97	0.92		



Alcohol Cont...

ALCOHOL CONSUMPTION										
CONSTRUCT	MEASURE	SOURCE	YEAR							
			2003	2004	2005	2006	2007	2008	2009	
Current Use	Percentage of persons aged 12 and older reporting any use of alcohol in the past 30 days	NSDUH	OK	42.9	42.6	42.4	41.9	42.5		
			Nation	50.1	50.3	51.8	50.9	51.1	51.6	
		Rate Ratio		0.87	0.90	0.82	0.82	0.83		
	Percent of students in grades 9-12 reporting any use of alcohol in the past 30 days	YRBS	OK	47.8		40.5		43.1		39.0
			Nation	44.9		43.3		44.7		41.8
	Rate Ratio		1.06		0.94		0.96		0.93	
Percent of persons aged 18 and over reporting any use of alcohol in the past 30 days	BRFSS	OK	43.4	43.0	42.3	41.7	40.9	41.5	42.6	
		Nation	59.4	57.1	56.2	55.4	54.8	54.4	54.3	
	Rate Ratio		0.73	0.75	0.75	0.75	0.75	0.76	0.78	
Current Binge Drinking	Percent of persons aged 12 and older reporting having five or more drinks on at least one occasion in the past 30 days	NSDUH	OK	19.0	20.7	21.4	21.4	21.2		
			Nation	22.6	22.8	22.7	23.0	23.3	23.3	
		Rate Ratio		0.91	0.94	0.93	0.91			
	Percent of students in grades 9-12 reporting having five or more drinks on at least one occasion in the past 30 days	YRBS	OK	34.0		26.6		27.9		24.0
			Nation	28.3		25.5		26.0		24.2
	Rate Ratio		1.20		1.04		1.07		0.99	
Percent of persons aged 18 and older reporting having five or more drinks on at least one occasion in the past 30 days	BRFSS	OK	13.3	13.0	12.6	13.4	12.4	12.2	12.9	
		Nation	16.5	15.1	14.4	15.4	15.8	15.6	15.7	
	Rate Ratio		0.81	0.86	0.88	0.87	0.78	0.78	0.82	
HEAVY DRINKING	Percent of adults aged 18 and older reporting average daily alcohol consumption greater than 2 drinks (male) or greater than 1 drink (female) per day	BRFSS	OK	4.2	3.7	3.1	3.6	3.5	2.9	3.4
			Nation	5.8	4.9	4.9	4.9	5.2	5.1	5.1
		Rate Ratio		0.72	0.76	0.63	0.73	0.67	0.57	0.67
AGE OF INITIAL USE	Percent of students in grades 9-12 who reported first using alcohol before age 13	YRBS	OK	26.8		25.2		23.3		19.4
			Nation	27.8		25.6		23.8		21.1
		Rate Ratio		0.96		0.98		0.98		0.92
DRINKING AND DRIVING	Percent of students in grades 9-12 who reported riding in a car driven by someone who had been drinking	YRBS	OK	30.6		25.8		26.8		23.1
			Nation	30.2		28.5		29.1		28.3
		Rate Ratio		1.01		0.91		0.92		0.82
	Percent of students in grades 9-12 who reported driving when they had been drinking	YRBS	OK	17.5		12.3		13.3		11.0
			Nation	12.1		9.9		10.5		9.7
		Rate Ratio		1.45		1.24		1.27		1.13

ODMHSAS

Creating Healthier Oklahoma Communities

A Closer Look at Alcohol Indicators Cont...



Current Alcohol Use YRBS Oklahoma 2003, 2005, 2007					Binge Drinker YRBS Oklahoma 2003, 2005, 2007				
Grade	9	10	11	12	Grade	9	10	11	12
2003	41.5	45.7	53.3	52.0	2003	28.6	29.2	39.4	40.6
2005	38.3	37.6	39.7	47.3	2005	23.0	23.4	27.7	33.6
2007	32.3	42.6	46.5	54.3	2007	17.8	27.3	30.9	38.7
2009	30.4	37.5	43.8	45.8	2009	17.5	22.7	29.0	28.1

Drove While Drinking Alcohol YRBS Oklahoma 2003, 2005, 2007					Early Initiation (<13) YRBS Oklahoma 2003, 2005, 2007				
Grade	9	10	11	12	Grade	9	10	11	12
2003	8.9	13.2	26.3	23.8	2003	36.9	29.1	23.6	14.8
2005	6.5	8.6	15	20.7	2005	36.3	23.2	20.4	19.0
2007	6.4	10.4	16.4	22.5	2007	29.7	27.6	18.3	15.1
2009	5.7	9.3	11.5	18.7	2009	25.9	22.2	17.4	10.3

Rode With Someone Who Had Been Drinking Alcohol YRBS Oklahoma 2003, 2005, 2007				
Grade	9	10	11	12
2003	27.8	31.8	33.2	30.0
2005	25.9	21.8	25.1	30.8
2007	22.2	25.1	28.1	33.1
2009	21.8	23.7	25.5	22.1

Prescription Drugs



- "Our efforts against methamphetamine, cocaine, and other illegal drugs are working," said John Walters, director of National Drug Control Policy. "The markets for these poisons are shrinking, and the deadly grip they hold on the lives of individuals, families, and communities is being countered. But when it comes to prescription drugs, we can not afford to re-live the painful experiences we've had with illegal drugs. We must act quickly to increase awareness of the dangers of prescription drug abuse, decrease the illegal diversion of these products, and shore up safer practices for their prescription and distribution."

Prescription Drugs Cont.

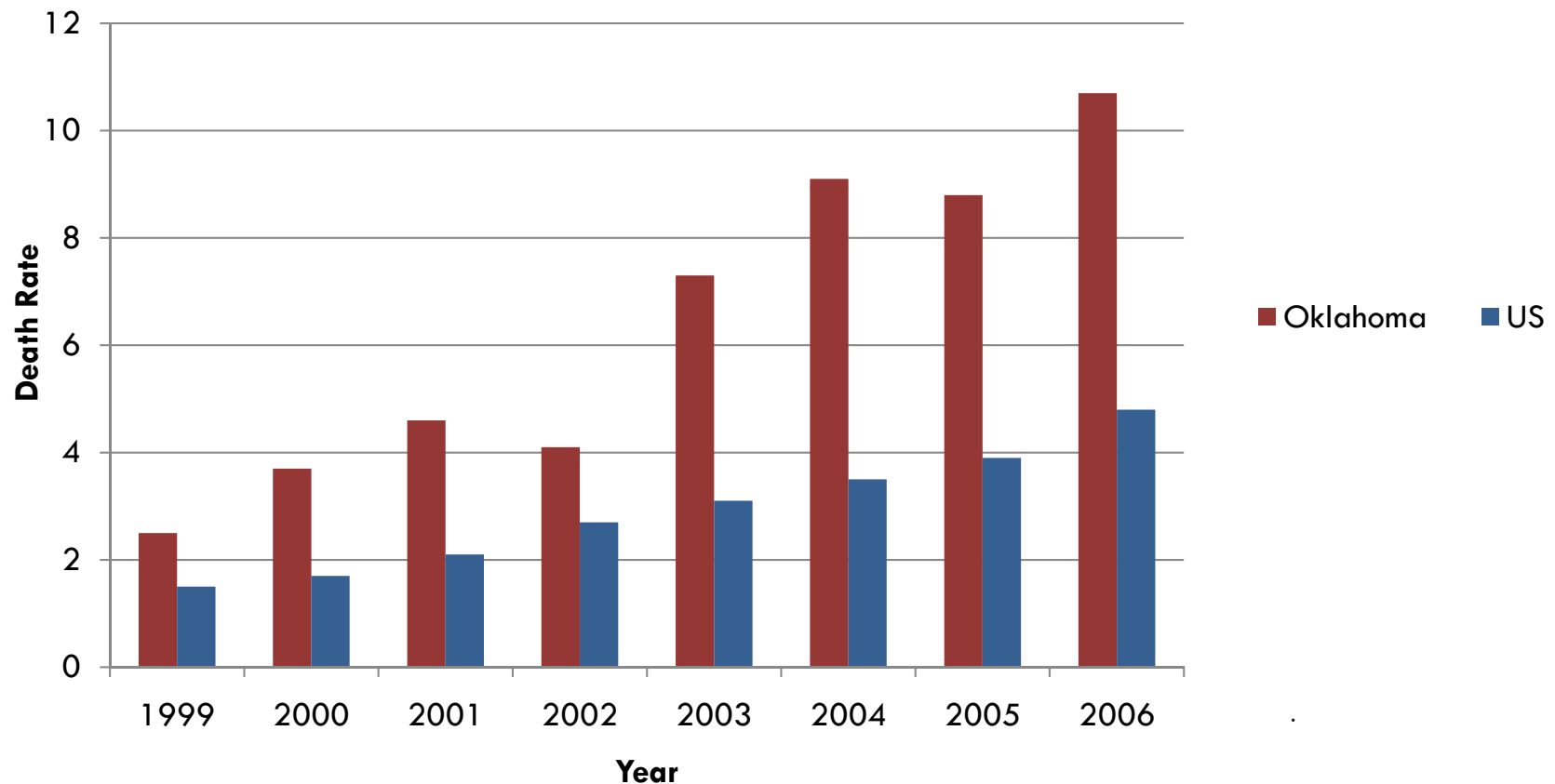


- ❑ Fatal poisonings involving opioid analgesics in the US 2006: Oklahoma ranked 4th in the nation
- ❑ Non-medical use of prescription painkillers in the past month ages 12 and older has risen 22% from 2004-2007. in Oklahoma. In 2007, Oklahoma was **232%** above the national average in consumption.

Prescription Drugs Cont.



Opioid Overdose Deaths per 100,000



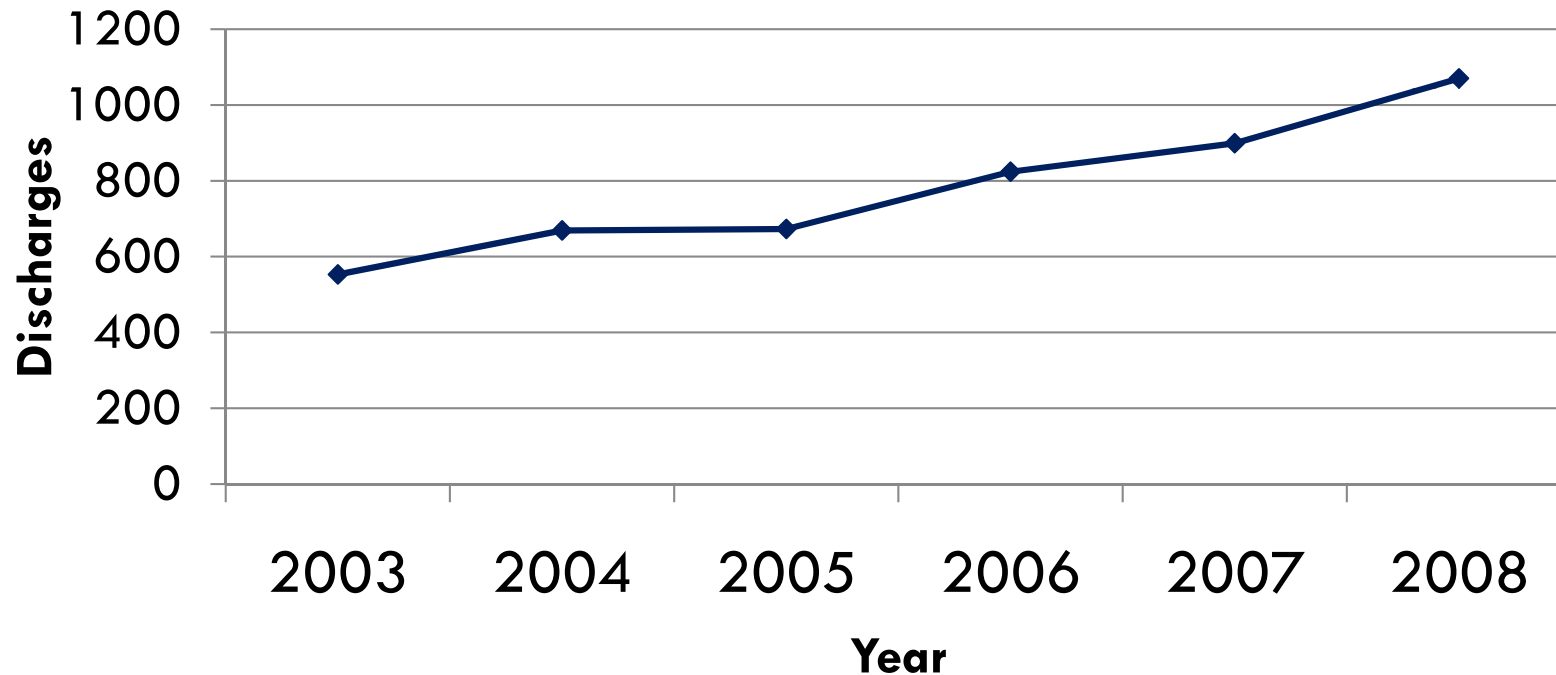
CDC, National Center for Health Statistics.
Multiple Causes of Death, 1999-2006

ODMHSAS
Creating Healthier Oklahoma Communities

Prescription Drugs Cont.



Oklahoma Hospital Inpatient Data 2003-2008



Oklahoma Hospital Inpatient Data 2003 - 2008
Oklahoma State Health Department - Health Care Information
Hospitalizations associated with Opiates ICD9 Code - 965.0

ODMHSAS
Creating Healthier Oklahoma Communities

Thank You!



Jamie Piatt

Oklahoma State Department of Mental Health and
Substance Abuse Services

jpgiatt@odmhsas.org

405-522-6785

ODMHSAS
Creating Healthier Oklahoma Communities