

# OKLAHOMA TRANSPORTATION COMMISSION

**At Large – Chairman, Gene McKown, Norman (405) 364-1152**

**District 1 – Member Bob Coburn, Muskogee, (918) 869-7495**

Adair, Cherokee, Haskell, McIntosh, Muskogee, Okmulgee, Sequoyah, Wagoner

**District 2 – Member, James L. Grimsley, Calera, (405) 514-7365**

Atoka, Bryan, Choctaw, Latimer, LeFlore, McCurtain, Marshall, Pittsburg, Pushmataha

**District 3 – Secretary, T.W. Shannon, Oklahoma City, 405-946-2265**

Coal, Cleveland, Garvin, Hughes, Johnston, Lincoln, McClain, Okfuskee, Pontotoc, Pottawatomie, Seminole

**District 4 – Member Don Freymiller, Oklahoma City, (405) 792-8000**

Canadian, Garfield, Grant, Kay, Kingfisher, Logan, Noble, Oklahoma, Payne

**District 5 – Member, David Dyson, Elk City, (580) 225-0450**

Beckham, Blaine, Custer, Dewey, Greer, Harmon, Jackson, Kiowa, Roger Mills, Tillman, Washita

**District 6 – Member Bobby J. Alexander, Woodward, (580) 254-3232**

Alfalfa, Beaver, Cimarron, Ellis, Harper, Major, Texas, Woods, Woodward

**District 7 – Member, Stephen LaForge, Chickasha, (405) 222-3050**

Caddo, Carter, Comanche, Cotton, Grady, Jefferson, Love, Murray, Stephens

**District 8 – Vice-Chairman, Member Robert Peterson, Tulsa (918) 281-2673**

Craig, Creek, Delaware, Mayes, Nowata, Osage, Ottawa, Pawnee, Rogers, Tulsa, Washington

**Secretary of Transportation – Tim J. Gatz (405) 425-3602**

## Oklahoma Department of Transportation

Executive Director	Tim J. Gatz	522-1800
Deputy Director	Dawn Sullivan	521-4768
Chief Engineer	Brian Taylor	521-2701
Director of Finance & Administration	Chelley Hilmes	521-2591
Director of Operations	Shawn Davis	521-4675
Director of Engineering	Tim Tegeler	521-6916
Director of Capital Programs	Rick Johnson	522-6000
Interagency Liaison & PR Advisor	Terri Angier	521-6004
General Counsel	Sarah Penn	521-2630
Bridge Division	Steve Jacobi	521-2606
Civil Rights	Jenny Allen	521-2072
Construction Division Engineer	John Leonard	521-2561
Environmental Programs Division	Siv Sundaram	521-3050
Facilities Management Division	Ken Phillips	522-7605
Human Resources Division	Scott Lange	521-2194
Lake/Industrial Access Programs	Mitch Surret	522-0290
Legal Division	Lisa Endres	521-2681
Local Government Division	Shelly Williams	521-2553
Maintenance Division	Taylor Henderson	521-2557
Materials Division	Matt Romero	521-2677
Media & Public Relations	Brenda Perry (Acting)	521-6006
Office Engineer	Anthony Delce	521-2625
Office of Mobility & Public Transit Division	Ernie Mbroh	521-2584
Office Services	Jamie Bleeker	521-2587
Operations Review & Evaluation Division	Holly Lowe	521-4708
Procurement	Jennifer Hankins	522-6792
Project Management Division	Daniel Nguyen	522-3618
Rail Programs Division	Jared Schwennesen	521-4203
Right-of-Way Division	Robert Blackwell	521-2661
Roadway Design	Caleb Austin	521-2695
Strategic Asset & Performance Management	Matthew Swift	521-2671
Survey Division	Kyle King	521-2621
Traffic Engineering Division	Chad Pendley	521-2861

## ODOT Field Districts

<u>Location and District Engineer</u>	<u>Phone</u>	<u>Fax</u>
Dist. 1, Muskogee, Chris Wallace	(918)687-5407	(918)687-9955
Dist. 2, Antlers, Anthony Echelle	(580)298-3371	(580)298-6152
Dist. 3, Ada, Ron Brown	(580)332-1526	(580)332-0261
Dist. 4, Perry, Trenton January	(580)336-7340	(580)336-7350
Dist. 5, Clinton, Brent Almquist	(580)323-1431	(580)323-1430
Dist. 6, Buffalo, Ron McDaniel	(580)735-2561	(580)735-2248
Dist. 7, Duncan, Jay Earp	(580)255-7586	(580)255-5064
Dist. 8, Tulsa, Randle White	(918)838-9933	(918)832-9074



## AGENDA FOR THE TRANSPORTATION COMMISSION MEETING

**DATE:** Monday, November 2, 2020  
**TIME:** 11:00 a.m.  
**PLACE:** Teleconference

---

Due to state agency COVID-19 precautions and in compliance with Gov. Kevin Stitt's executive orders and legislation, the Monday, November 2nd meeting of the Oklahoma Transportation Commission will be held as a **virtual meeting via video teleconference** pursuant to the Oklahoma Open Meeting Act, as amended by Senate Bill 661. Use one of the two methods below to access the meeting.

Commissioners will be joining the meeting by video teleconference and will be given a phone number and access code specifically for them that allows them to listen and ask questions. To uphold social distancing, only a limited number of staff will physically be in the commission room that day to present agenda items.

The Oklahoma Transportation Commission meeting teleconference will be available through two options. Transportation industry partners and the general public must choose only one of the two options below to access the meeting:

- **To watch:**  
Public access meeting link: <http://www.ustream.tv/channel/odot-monthly-commission-meeting>  
Make sure the volume on your PC (or other device) as well as the Ustream volume are turned up.
- **To listen only:**  
Dial this phone number, toll free: 1-669-900-6833  
When prompted, dial in the Meeting Number: 989 0292 8670

Special Note: The public access will be monitored by ODOT to ensure that if the audio connection is lost or interrupted, the meeting will be stopped and not resumed until an audio connection is restored.

In such a circumstance, if the audio connection is not restored within thirty (30) minutes, the meeting will be deemed adjourned at the time the audio connection was lost and the meeting shall be reconvened at 1:30 pm on the same date as identified for the originally scheduled meeting.

If an audio connection cannot be restored at the time scheduled to reconvene the meeting, then the meeting shall be reconvened on the next business day at 9:00 am and thereafter on the next business day at 9:00 am until an audio connection is restored.

This meeting will be electronically recorded and audio livestreamed from 200 NE 21st Street, Oklahoma City, OK 73105.

**Public Access to complete Commission Packet:** [www.odot.org/meetings](http://www.odot.org/meetings)

**ITEMS TO BE PRESENTED BY COMMISSION CHAIRMAN**

Call to Order

Roll Call – Commission Secretary

**ANNOUNCEMENTS AND PRESENTATIONS**

**ODOT Deputy Director Dawn Sullivan earns Transportation Woman of the Year recognition – Mr. Gatz**  
**Introduction of the new Comptroller – Mr. Gatz**

**ITEM TO BE PRESENTED BY THE SECRETARY TO THE COMMISSION**

**134. Approval of the Minutes of the Transportation Commission Meeting of October 5, 2020**

**CONSENT DOCKET TO BE PRESENTED BY COMMISSION CHAIRMAN**

**135. Speed Zone Revisions – Mr. Pendley**

**a) Multiple Counties – District II**

1. Pittsburg County – various locations along SH-31 including the City of Krebs
2. Bryan County – various locations along US-70 including Unincorporated Community of Blue
3. Choctaw County – various locations along US-70 including the Town of Fort Towson
4. Pittsburg County – various locations along US-270 including the City of Haileyville

**b) Multiple Counties - District III**

1. Okfuskee & Hughes Counties – various locations along SH-48 including the Town of Beardon
2. McClain County – various locations along SH-74 including the City of Purcell
3. Garvin County – various locations along US-77 including the City of Pauls Valley
4. Garvin County – various locations along SH-19 including the City of Pauls Valley

**c) Multiple Counties - District VIII**

1. Tulsa & Washington Counties – various locations along SH-11 including the City of Skiatook

**136. Safety Improvement Projects - Mr. Pendley**

- a) LeFlore County – District II - Traffic Signal Replacement and Railroad Preemption at the intersections of US-59/US-270 with Avenue C and SH-128 in the City of Heavener - \$325,000
- b) Atoka County – District II - Traffic Signal Replacement and Coordination Project along US-69/75 in the City of Atoka at the intersections of Redbud Lane, State Highway 3/7 (13<sup>th</sup> Street), and Court Street - \$850,000

**137. Land Sales – Mr. Phillips**

- a) Okmulgee County – District I – located on the east side of US-75 at the NE & SE corners of US-75 and E. Main Street in Henryetta, OK - \$186,250.00
- b) Logan County – District IV – located on the east side of I-35 at the former Guthrie Rest Area south of Guthrie, OK - \$100,600.00

**END OF CONSENT DOCKET**

---

**ITEMS TO BE PRESENTED BY DIRECTOR OF ENGINEERING – Mr. Tegeler**

**138. Engineering Contracts**

**a) Statewide – All Districts – On-Demand Public Involvement Services (CI-2251)**

CI-2251A	Blanton and Associates, Inc.
CI-2251B	Garver, LLC
CI-2251C	Poe and Associates, Inc.

The aggregate not to exceed amount for these three (3) contracts is \$750,000.00

**b) Cherokee County – District I - to prepare construction plans for SH-82: from 2.57 miles south of SH-82C junction, north 6 miles**

CI-2219A	BKL, Inc.	\$703,690.00
----------	-----------	--------------

**c) Coal County – District III - to prepare construction plans for US-75: Over Black Creek, begin 6.25 miles north of SH-3**

CI-2223D	HNTB Corporation	\$291,115.00
----------	------------------	--------------

**d) Johnston County – District III - to prepare construction plans for SH-48: from Atoka County Line, north 7.37 miles to SH-48A**

CI-2219B	H.W. Lochner, Inc.	\$632,465.00
----------	--------------------	--------------

**e) Johnston County – District III - to prepare construction plans for SH-99: from 0.61 miles north of SH-22, north 5.31 miles**

CI-2219C	Grossman & Keith Engineering Company	\$574,772.00
----------	--------------------------------------	--------------

**f) Canadian County – District IV - to prepare construction plans for I-40: Country Club Road over I-40, 2 miles west of US-81**

CI-2223F	Olsson, Inc.	\$664,240.00
----------	--------------	--------------

**g) Grant County – District IV - to prepare construction plans for SH-132: Over unnamed Creek, 0.35 miles north of US-64 junction**

CI-2223J	Walter P. Moore & Associates, Inc.	\$125,600.00
----------	------------------------------------	--------------

**h) Kay County – District IV - to prepare construction plans for SH-11: from US-77, east 7.0 miles towards Kaw City**

CI-2222F	MKEC Engineering, Inc.	\$956,735.00
----------	------------------------	--------------

**i) Texas County – District VI - to prepare construction plans for SH-94: over the Beaver River, 3.1 miles north of junction SH-94/SH-3**

CI-2223B	CEC Corporation	\$473,484.50
----------	-----------------	--------------

**j) Comanche County – District VII - to prepare construction plans for US-277: from just east of the northbound H.E. Bailey Turnpike off ramp east 0.4 miles to the US-277/SH-17 intersection**

CI-2222G	TEIM Design, PLLC	\$268,600.00
----------	-------------------	--------------



- g) Love County - Co. Rd. - CIRB-243C(031)RB / 31411(04), \$24,375.00, 1.71%
- h) Marshall County - SH-199 - SSP-248F(051)PM / 23145(09), \$47,951.66, 21.89%
- i) Mayes County - Co. Rd. - STP-249C(053)CI / 31161(04), \$21,549.14, 0.61%
- j) McClain County - I-35 - NHPPI-3500-(077)PM / 29734(04), \$99,750.63, 0.60%
- k) Okfuskee County - US-62 - STP-254C(040)SS / 27963(04), \$6,312.37, 0.25%
- l) Oklahoma County - Ct. St. - OKC-XTWN(006)SS / OKC-XTWN(048)SS / 17428(60), \$41,571.69, 0.10%
- m) Oklahoma County - I-40 - ACNHPPI-0040-5(382) / ACNHPPI-4000-(047) / 20324(04), \$930,167.50, 1.30%
- n) Oklahoma County - SH-66 - TAP-255C(490)TP / NHPP-255N(489)EH / 32984(04), \$21,396.42, 0.61%
- o) Oklahoma County - Ct. St. - STPG-255F(483)AG / 33344(04), \$105,500.05, 17.05%
- p) Okmulgee County - US-75A - ACSTP-156C(136)SS / 24369(04), \$146,687.36, 0.90%
- q) Texas County - US-54 - NHPP-008N(059)FP / NHPP-008N(090)FP / 20947(04), \$150,487.56, -1.26%  
Underrun
- r) Tillman County - US-70 - STP-271C(067)PM / 29514(04), \$90,000.00, 2.81%
- s) Tulsa County - Ct. St. - STP-172B(400)IG / 25212(04), \$653,718.12, 10.64%
- t) Tulsa County - Ct. St. - STP-272B(278)CI / 30703(04), \$34,366.90, 1.19%

**ITEMS TO BE PRESENTED BY THE COMPTROLLER DIVISION**

**142. Proposed Bid Openings – Mr. Hackney, Project Funding Manager**

- a) Final January, 2020 Proposed Bid Opening
- b) Tentative February, 2020 Proposed Bid Opening
- c) Tentative March, 2020 Proposed Bid Opening

**143. Settlement for Damages to State Property – Ms. Hilmes**

Mr. Banks – Seminole County - \$578.93

**144. Fiscal Year 2020 Budget Revisions – Ms. Hilmes**

- a) Request to increase the federal share of Capital Outlays for the carryover of federal revenue:

Federal Aid Construction	\$ 104,400,000
Federal Aid City Projects	39,300,000
County Program	<u>15,900,000</u>
Total	\$ 159,600,000

- b) Request to increase the state share of Capital Outlays for carryover of state funding:

Engineering Contracts	\$21,300,000
Right of Way	7,450,000
Federal Aid Construction	83,550,000
State Aid Construction	17,550,000
Asset Preservation	<u>3,867,000</u>
Total	\$133,717,000

- c) Request to increase the Maintenance Program by \$11,071,110 for carryover of state funding.
- d) Request to re-budget prior year reserves of \$90,000,000 into SFY2021 for existing Right of Way/Utilities projects.
- e) Request to increase County Improvement for Roads and Bridges by \$25,065,062 for carryover of CIRB funds.

**ITEM TO BE PRESENTED BY THE OFFICE ENGINEER – Mr. Delce**

**145. Awards**

October 15, 2020 – Regular Letting

**ITEM TO BE PRESENTED BY THE DIRECTOR OF OPERATIONS – Mr. Davis**

**146. Special Crossing Permit Request for Industrial Use**

District II - Junction of US-70 Bypass and Fabral Road in Idabel, Oklahoma in McCurtain County

**ITEM TO BE PRESENTED BY THE DIRECTOR – Mr. Gatz**

**147. Director's Report**

**Information Only:** No Commission action required.

**ITEM TO BE PRESENTED BY COMMISSION CHAIRMAN**

**148. Adjournment Motion**

---

*The Oklahoma Department of Transportation (ODOT) ensures that no person or groups of persons shall, on the grounds of race, color, sex, religion, national origin, age, disability, retaliation or genetic information, be excluded from participation in, be denied the benefits of, or be otherwise subjected to discrimination under any and all programs, services, or activities administered by ODOT, its recipients, sub-recipients, and contractors. To request an accommodation please contact the ADA Coordinator at 405-521-4140 or the Oklahoma Relay Service at 1-800-722-0353. If you have any ADA or Title VI questions email [ODOT-ada-titlevi@odot.org](mailto:ODOT-ada-titlevi@odot.org).*

## FOR PRESENTATION AT COMMISSION MEETING OF NOV. 2, 2020

**SUBJECT: ODOT Deputy Director Dawn Sullivan earns Transportation Woman of the Year recognition**

Oklahoma Department of Transportation Deputy Director Dawn Sullivan was named 2020 Woman of the Year by the Women's Transportation Seminar International, Oklahoma Chapter. This award was announced in October and Sullivan will be honored at the 2021 awards banquet. She is a founding member of the WTS Oklahoma Chapter, which supports the advancement of women in the transportation industry through leadership training, professional development and networking opportunities.

Since July 2019, Sullivan has been serving as the ODOT Deputy Director. In her Executive Staff position, Sullivan oversees all day-to-day administration and strategic planning for the Department.

Starting in ODOT's Engineer-in-Training program, Sullivan has nearly 32 years of service dedicated to the Department. She has served in a variety of roles including in Roadway Design, Planning & Research Division and Environmental Programs Division. In 2016, she was named the Director of Capital Programs, making her the first woman to serve on ODOT's Executive Staff. She remained in that position until becoming the Agency's Deputy Director.

Sullivan is known for her leadership in several areas, especially in transportation policy and programs. She has participated on several AASHTO and TRB committees, has served as co-chair for the Oklahoma State Transportation Innovation Council and the Southern Plains Transportation Center Advisory Board Chairman. WTS Oklahoma honored Sullivan for the example she sets for women in transportation statewide.



FOR PRESENTATION AT COMMISSIONER MEETING OF NOVEMBER 2, 2020

AGENDA ITEM NO: 135

SUBJECT: Speed Zone Revisions

a) Various Locations – Commissioner District II

		Length
1. <u>Along SH 31 in Pittsburg including the City of Krebs</u>		
45 MPH	Beginning at the US 270 & SH 31 junction, extending easterly 0.58 mile to a point 0.56 mile west of Main Street <u>PRESENTLY ZONED 45 MPH</u> <u>PRESENTLY POSTED 35, 45 MPH (CHANGE)</u>	0.58 mile
35 MPH	Beginning at a point 0.56 mile west of Main Street, extending easterly 0.14 mile to a point 0.42 mile west of Main Street <u>PRESENTLY ZONED/POSTED 35 MPH (NO CHANGE)</u>	0.14 mile
30 MPH	Beginning at a point 0.42 mile west of Main Street, extending easterly 0.57 mile to a point 0.15 mile east of Main Street	
25 MPH (School)	<u>SCHOOL ZONE (0.17 mile)</u> Beginning at a point 0.01 mile east of 6 <sup>th</sup> Street, extending easterly 0.17 mile to a point 0.01 mile east of 3 <sup>rd</sup> Street  Effective only on regular school days, from 7:00 am to 8:00 am and from 3:15 pm to 4:30 pm <u>PRESENTLY ZONED/POSTED 25, 35 MPH (CHANGE)</u>	0.57 mile
35 MPH	Beginning at a point 0.15 mile east of Main Street, extending easterly 0.27 mile to a point 0.08 mile east of Krebs Lake Road <u>PRESENTLY ZONED 35, 45 MPH</u> <u>PRESENTLY POSTED 35 MPH (ZONING CHANGE)</u>	0.27 mile
45 MPH	Beginning at a point 0.08 mile east of Krebs Lake Road, extending easterly 0.17 mile to a point 0.25 mile east of Krebs Lake Road <u>PRESENTLY ZONED/POSTED 45 MPH (NO CHANGE)</u>	0.17 mile
55 MPH	Beginning at a point 0.25 mile east of Krebs Lake Road, extending easterly 0.14 mile to a point 0.39 mile east of Krebs Lake Road <u>PRESENTLY NOT ZONED</u> <u>PRESENTLY POSTED 55 MPH (ZONING CHANGE)</u>	0.14 mile

65 MPH	Beginning at a point 0.39 mile east of Krebs Lake Road, extending easterly 25.27 miles to a point 0.60 mile west of the SH 31 & SH 71 junction <u>PRESENTLY NOT ZONED</u> <u>PRESENTLY POSTED 55, 65 MPH (CHANGE)</u>	25.27 miles
--------	---	-------------

=====

TOTAL APPROXIMATE LENGTH ZONED	27.14 miles
--------------------------------	-------------

2. Along US 70 in Bryan County including the Unincorporated Community of Blue Length

65 MPH	Beginning at the US 70 & Old Highway 70 junction, extending easterly 5.04 miles to a point 0.77 mile west of the US 70 & Robinson Road junction <u>PRESENTLY NOT ZONED</u> <u>PRESENTLY POSTED 65 MPH (ZONING CHANGE)</u>	5.64 miles
--------	---	------------

55 MPH	Beginning at a point 0.77 mile west of the US 70 & Robinson Road junction, extending easterly 0.90 mile to a point 0.13 mile east of the US 70 & Robinson Road
--------	--

40 MPH (School)	<u>SCHOOL ZONE (0.10 mile)</u> Beginning at a point 0.36 mile west of the US 70 & Robinson Road junction, extending easterly 0.10 mile to a point 0.26 mile west of the US 70 & Robinson Road junction  Effective only on regular school days, from 7:00 am to 8:30 am and from 2:30 pm to 4:00 pm
--------------------	---

25 MPH (School)	<u>SCHOOL ZONE (0.16 mile)</u> Beginning at a point 0.26 mile west of the US 70 & Robinson Road junction, extending easterly 0.16 mile to a point 0.10 mile west of the US 70 & Robinson Road junction  Effective only on regular school days, from 7:00 am to 8:30 am and from 2:30 pm to 4:00 pm
--------------------	---

40 MPH (School)	<u>SCHOOL ZONE (0.10 mile)</u> Beginning at a point 0.10 mile west of the US 70 & Robinson Road junction, extending easterly 0.10 mile to the US 70 & Robinson Road junction  Effective only on regular school days, from 7:00 am to 8:30 am and from 2:30 pm to 4:00 pm
--------------------	---

<u>PRESENTLY POSTED 50, 55, 65 MPH</u> <u>PRESENTLY ZONED 50, 55 MPH (CHANGE)</u>	0.90 mile
--	-----------

65 MPH	Beginning at a point 0.13 mile east of the US 70 & Robinson Road junction, extending easterly 4.06 mile to a point 0.68 mile west of the US 70 & SH 22 junction <u>PRESENTLY NOT ZONED</u> <u>PRESENTLY POSTED 65 MPH (ZONING CHANGE)</u>	4.06 miles
--------	---	------------

=====

TOTAL APPROXIMATE LENGTH ZONED	10.60 miles
--------------------------------	-------------

3. <u>Along US 70 in Choctaw County including the Town of Fort Towson</u>	Length
---	--------

65 MPH	Beginning at CR N4320, extending easterly 4.38 miles to a point 0.15 mile east of the US 70 & SH 109 junction <u>PRESENTLY NOT ZONED</u> <u>PRESENTLY POSTED 65 MPH (ZONING CHANGE)</u>	4.38 miles
--------	---	------------

55 MPH	Beginning at a point 0.15 mile east of the US 70 & SH 109 junction, extending easterly 0.11 mile to a point 0.26 mile east of the US 70 & SH 109 junction <u>PRESENTLY ZONED 50 MPH (1965)</u> <u>PRESENTLY POSTED 55 MPH (ZONING CHANGE)</u>	0.11 mile
--------	---	-----------

45 MPH	Beginning at a point 0.26 mile east of the US 70 & SH 109 junction, extending easterly 0.68 mile to a point 0.94 mile east of the US 70 & SH 109 junction	
--------	---	--

35 MPH (School)	<u>SCHOOL ZONE (0.20 mile)</u> Beginning at a point 0.04 mile west of Red Rd., extending easterly 0.20 mile to a point 0.16 mile east of Red Rd.	
--------------------	---	--

Effective only on regular school days,  
from 7:15 am to 8:15 am and  
from 3:55 pm to 4:55 pm

<u>PRESENTLY ZONED 30, 40, 50 MPH (1965)</u> <u>PRESENTLY POSTED 45 MPH (ZONING CHANGE)</u>	0.68 mile
--	-----------

55 MPH	Beginning at a point 0.94 mile east of the US 70 & SH 109 junction, extending easterly 0.47 mile to a point 1.41 miles east of the US 70 & SH 109 junction <u>PRESENTLY ZONED 50 MPH (1965)</u> <u>PRESENTLY POSTED 55 MPH (ZONING CHANGE)</u>	0.47 mile
--------	--	-----------

65 MPH	Beginning at a point 1.41 miles east of the US 70 & SH 109 junction, extending easterly 5.70 miles to the Choctaw & McCurtain County Line <u>PRESENTLY NOT ZONED</u> <u>PRESENTLY POSTED 65 MPH (ZONING CHANGE)</u>	5.70 miles
--------	---	------------

=====

TOTAL APPROXIMATE LENGTH ZONED	11.34 miles
--------------------------------	-------------

4. <u>Along US 270 in Pittsburg County including the City of Haileyville</u>		Length
65 MPH	Beginning at a point 0.11 mile east of Old US 270 W (Dow), extending easterly 1.26 miles to a point 0.41 mile west of US 270 & SH 63 (Main Street) junction <u>PRESENTLY NOT ZONED</u> <u>PRESENTLY POSTED 65 MPH (ZONING CHANGE)</u>	1.26 miles
55 MPH	Beginning at a point 0.41 mile west of the US 270 & SH 63 (Main Street) junction, extending easterly 0.19 mile to a point 0.22 mile west of the US 270 & SH 63 (Main Street) junction <u>PRESENTLY NOT ZONED</u> <u>PRESENTLY POSTED 55 MPH (ZONING CHANGE)</u>	0.19 mile
45 MPH	Beginning at a point 0.22 mile west of the US 270 & SH 63 (Main Street) junction, extending easterly 1.14 miles to a point 0.92 mile east of the US 270 & SH 63 (Main Street) junction	
35 MPH (School)	<u>SCHOOL ZONE (0.21 mile)</u> Beginning at a point 0.05 mile east of the US 270 & SH 63 (Main Street) junction, extending easterly 0.21 mile to a point 0.26 mile east of the US 270 & SH 63 (Main Street) junction  Effective only on regular school days, from 7:15 am to 8:15 am and from 3:15 pm to 4:15 pm <u>PRESENTLY ZONED/POSTED 45 MPH (NO CHANGE)</u>	1.14 mile
		=====
TOTAL APPROXIMATE LENGTH ZONED		2.59 miles

**b) Various Locations – Commissioner District III**

1. <u>Along SH 48 in Okfuskee &amp; Hughes Counties including the Town of Beardon</u>		Length
65 MPH	Beginning at a point 0.03 mile south of CR EW1320 Road, extending northerly 13.28 miles to the Hughes & Okfuskee County Line <u>PRESENTLY NOT ZONED</u> <u>PRESENTLY POSTED 65 MPH (ZONING CHANGE)</u>	13.28 miles
65 MPH	Beginning at the Okfuskee & Hughes County Line, extending northerly & easterly 4.15 mile to a point 0.81 mile west of the SH 48 & CR N3720 Road Junction <u>PRESENTLY NOT ZONED</u> <u>PRESENTLY POSTED 65 MPH (ZONING CHANGE)</u>	4.15 miles

55 MPH	Beginning at a point 0.81 mile west of the SH 48 & CR N3720 Road Junction, extending easterly 0.20 mile to a point 0.61 mile west of the SH 48 & CR N3720 Road Junction <u>PRESENTLY ZONED/POSTED 55 MPH (NO CHANGE)</u>	0.20 mile
50 MPH	Beginning at a point 0.61 mile west of the SH 48 & CR N3720 Road Junction, extending easterly 1.41 mile to a point 0.13 mile west of the SH 48 & CR E1150 Road Junction	
35 MPH (School)	<u>SCHOOL ZONE (0.17 mile)</u> Beginning at a point 0.06 mile west of the SH 48 & CR N3720 Road Junction, extending easterly 0.17 mile to a point 0.11 mile east of the SH 48 & CR N3720 Road Junction  Effective only on regular school days, from 7:00 am to 8:00 am and from 3:00 pm to 4:00 pm <u>PRESENTLY ZONED/POSTED 50 MPH (NO CHANGE)</u>	1.41 miles
55 MPH	Beginning at a point 0.13 mile west of the SH 48 & CR E1150 Road junction, extending easterly & northerly to a point 0.37 mile north of the SH 48 & CR E1150 Road Junction <u>PRESENTLY ZONED/POSTED 55 MPH (NO CHANGE)</u>	0.50 mile
65 MPH	Beginning at a point 0.37 mile north of the SH 48 & CR E1150 Road junction, extending northerly 8.05 miles to a point 0.28 mile south of the US 62 & SH 48 Junction <u>PRESENTLY NOT ZONED</u> <u>PRESENTLY POSTED 65 MPH (ZONING CHANGE)</u>	8.05 miles
		=====
	TOTAL APPROXIMATE LENGTH ZONED	27.59 miles
2.	<u>Along SH 74 in McClain County including the City of Purcell</u>	Length
40 MPH	Beginning at the SH 74 north & Green Avenue junction, extending northerly 0.51 mile to a point 0.51 mile north of the SH 74 north & Green Avenue junction	
30 MPH (School)	<u>SCHOOL ZONE (0.20 mile)</u> Beginning at a point 0.10 mile east of 9 <sup>th</sup> Avenue, extending northerly 0.20 mile to a point 0.10 mile north of 9 <sup>th</sup> Avenue  Effective only on regular school days, from 7:00 am to 8:00 am and from 3:00 pm to 4:00 pm <u>PRESENTLY POSTED 40, 50 MPH</u> <u>PRESENTLY ZONED 40, 50 MPH (CHANGE)</u>	0.51 mile

50 MPH	Beginning at a point 0.51 mile north of the SH 74 north & Green Avenue junction, extending northerly 0.32 mile to a point 0.83 mile north of the SH 74 north & Green Avenue junction <u>PRESENTLY ZONED 50, 55 MPH</u> <u>PRESENTLY POSTED 50, 55 MPH (CHANGE)</u>	0.32 mile
--------	--	-----------

60 MPH	Beginning at a point 0.83 mile north of the SH 74 north & Green Avenue junction, extending northerly 7.74 mile to the SH 74 north & SH 24 junction <u>PRESENTLY NOT ZONED</u> <u>PRESENTLY POSTED 65 MPH (CHANGE)</u>	7.74 miles
--------	---	------------

=====

TOTAL APPROXIMATE LENGTH ZONED	8.57 miles
--------------------------------	------------

3. <u>Along US 77 in Garvin County including the City of Pauls Valley</u>	Length
---	--------

55 MPH	Beginning at a point 0.16 mile north of Airport Industrial Road (CR 1590 Rd), extending northerly 0.25 mile to a point 1.89 mile south of the US 77 south & SH 19 junction <u>PRESENTLY ZONED/POSTED 55 MPH (NO CHANGE)</u>	0.26 mile
--------	--	-----------

45 MPH	Beginning at a point 1.89 miles south of the US 77 south & SH 19 junction, extending northerly 0.82 mile to a point 1.07 miles south of the US 77 south & SH 19 junction <u>PRESENTLY ZONED 45, 55 MPH</u> <u>PRESENTLY POSTED 45 MPH (ZONING CHANGE)</u>	0.82 mile
--------	---	-----------

35 MPH	Beginning at a point 1.07 miles south of the US 77 south & SH 19 junction, extending northerly 0.70 mile to a point 0.37 mile south of the US 77 south & SH 19 junction <u>PRESENTLY ZONED/POSTED 35 MPH (NO CHANGE)</u>	0.70 mile
--------	---	-----------

25 MPH	Beginning at a point 0.37 mile south of the US 77 south & SH 19 junction, extending northerly and westerly 0.57 mile to a point 0.03 mile east of the US 77 north & SH 19 junction <u>PRESENTLY ZONED/POSTED 25 MPH (NO CHANGE)</u>	0.57 mile
--------	--	-----------

35 MPH	Beginning at a point 0.03 mile east of the US 77 north & SH 19 junction, extending westerly and northerly to a point 0.66 mile north of the US 77 north & SH 19 junction	
25 MPH (School)	<u>SCHOOL ZONE (0.19 mile)</u> Beginning at a point 0.01 mile north of Agnew Avenue, extending northerly 0.19 mile to a point 0.20 mile north of Agnew Avenue	
	Effective only on regular school days, From 7:30 am to 8:30 am and from 2:30 pm to 3:30 pm	
	<u>PRESENTLY ZONED/POSTED 35, 45 MPH (CHANGE)</u>	0.69 mile
45 MPH	Beginning at a point 0.66 mile north of the US 77 north & SH 19 junction, extending northerly 0.21 mile to a point 0.87 mile north of the US 77 north & SH 19 junction <u>PRESENTLY ZONED/POSTED 45 MPH (NO CHANGE)</u>	0.21 mile
55 MPH	Beginning at a point 0.87 mile north of the US 77 north & SH 19 junction, extending northerly 0.21 mile to a point 1.08 miles north of the US 77 north & SH 19 junction <u>PRESENTLY NOT ZONED</u> <u>PRESENTLY POSTED 55 MPH (ZONING CHANGE)</u>	0.21 mile
65 MPH	Beginning at a point 1.08 miles north of the US 77 north & SH 19 junction, extending northerly 5.85 miles to a point 0.42 mile south of the US 77 & SH 145 junction <u>PRESENTLY NOT ZONED</u> <u>PRESENTLY POSTED 65 MPH (ZONING CHANGE)</u>	5.85 miles
		=====
	TOTAL APPROXIMATE LENGTH ZONED	9.10 miles
4.	<u>Along SH 19 in Garvin County including the City of Pauls Valley</u>	Length
65 MPH	Beginning at a point 0.64 mile east of the SH 19 & SH 74 junction, extending easterly 8.94 miles to a point 0.38 mile west of the I-35 SB on Ramp <u>PRESENTLY NOT ZONED</u> <u>PRESENTLY POSTED 65 MPH (ZONING CHANGE)</u>	8.94 miles
55 MPH	Beginning at a point 0.38 mile west of the I-35 SB on Ramp, extending easterly 0.17 mile to a point 0.21 mile west of the I-35 on SB Ramp <u>PRESENTLY ZONED/POSTED 55 MPH (NO CHANGE)</u>	0.17 mile

45 MPH	<p>Beginning at a point 0.21 mile west of the I-35 SB on Ramp, extending easterly 2.38 miles to a point 0.37 mile west of the US 77 north &amp; SH 19 junction</p> <p><u>PRESENTLY ZONED 45, 50 MPH EB &amp; 55 MPH WB</u></p> <p><u>PRESENTLY POSTED 45, 50 MPH (CHANGE)</u></p>	2.38 miles
35 MPH	<p>Beginning at a point 0.37 mile west of the US 77 north &amp; SH 19 junction, extending easterly 0.37 mile to the US 77 north &amp; SH 19 junction</p> <p><u>PRESENTLY ZONED/POSTED 35 MPH (NO CHANGE)</u></p>	0.37 mile
25 MPH	<p>Beginning at the US 77 south &amp; SH 19 junction, extending easterly 0.19 mile to a point 0.19 mile east of the US 77 &amp; SH 19 junction</p> <p><u>PRESENTLY ZONED 25, 35 MPH</u></p> <p><u>PRESENTLY POSTED 25 MPH (ZONING CHANGE)</u></p>	0.19 mile
35 MPH	<p>Beginning at a point 0.19 mile east of the US 77 south &amp; SH 19 junction, extending easterly 0.75 mile to a point 0.25 mile west of CR 1560 Road</p>	
25 MPH (School)	<p><u>SCHOOL ZONE (0.22 mile)</u></p> <p>Beginning at a point 0.09 mile west of North Street, extending easterly 0.22 mile to a point 0.13 mile east of North Street</p> <p>Effective only on regular school days, From 7:30 am to 8:30 am and from 2:30 pm to 3:30 pm</p> <p><u>PRESENTLY ZONED 35, 45, 55 MPH</u></p> <p><u>PRESENTLY POSTED 35 MPH (ZONING CHANGE)</u></p>	0.75 mile
45 MPH	<p>Beginning at a point 0.25 mile west of CR 1560 Road, extending easterly 0.20 mile to a point 0.05 mile west of CR 1560 Road</p> <p><u>PRESENTLY ZONED 55 MPH</u></p> <p><u>PRESENTLY POSTED 45 MPH (ZONING CHANGE)</u></p>	0.20 mile
55 MPH	<p>Beginning at a point 0.05 mile west of CR 1560 Road, extending easterly 0.10 mile to a point 0.05 mile east of CR 1560 Road</p> <p><u>PRESENTLY NOT ZONED</u></p> <p><u>PRESENTLY POSTED 55 MPH (ZONING CHANGE)</u></p>	0.10 mile



60 MPH	Beginning at a point 0.05 mile east of CR 1560 Road, extending easterly 2.44 miles to a point 0.16 mile south of CR 1540 Road. <u>PRESENTLY ZONED 50 MPH</u> <u>PRESENTLY POSTED 50, 55 MPH (CHANGE)</u>	2.44 miles
65 MPH	Beginning at a point 0.16 mile south of CR 1540 Road, extending easterly 3.43 miles to the SH 19 & SH 133 junction <u>PRESENTLY NOT ZONED</u> <u>PRESENTLY POSTED 65 MPH (NO CHANGE)</u>	3.43 miles
		=====
	TOTAL APPROXIMATE LENGTH ZONED	18.97 miles

c) **Various Locations – Commissioner District VIII**

		Length
1.	<u>Along SH 11 in Tulsa &amp; Washington Counties including the City of Skiatook</u>	
65 MPH	Beginning at a point 0.19 mile north of 106 Street North, extending northerly 2.75 miles to a point 0.08 mile south of 136 Street North <u>PRESENTLY NOT ZONED</u> <u>PRESENTLY POSTED 65 MPH (ZONING CHANGE)</u>	2.75 miles
55 MPH	Beginning at a point 0.08 mile south of 106 Street North, extending northerly 0.57 mile to a point 0.70 mile south of the SH 11 & SH 20 junction <u>PRESENTLY ZONED 45, 55</u> <u>PRESENTLY POSTED 55, 65 MPH (CHANGE)</u>	0.57 mile
45 MPH	Beginning at a point 0.70 mile south of the SH 11 & SH 20 junction, extending northerly 0.50 mile to a point 0.20 mile south of the SH 11 & SH 20 junction <u>PRESENTLY ZONED/POSTED 45 MPH (POSTING CHANGE)</u>	0.50 mile
35 MPH	Beginning at a point 0.20 mile south of the SH 11 & SH 20 junction, extending northerly 0.36 mile to a point 0.16 mile north of the SH 11 & SH 20 junction <u>PRESENTLY ZONED 45 MPH</u> <u>PRESENTLY POSTED 35 MPH (ZONING CHANGE)</u>	0.36 mile
45 MPH	Beginning at a point 0.16 mile north of the SH 11 & SH 20 junction, extending northerly 0.19 mile to a point 0.35 mile north of the SH 11 & SH 20 junction <u>PRESENTLY ZONED 45, 55 MPH</u> <u>PRESENTLY POSTED 45 MPH (ZONING CHANGE)</u>	0.19 mile
55 MPH	Beginning at a point 0.35 mile north of the SH 11 & SH 20 junction, extending northerly 3.48 miles to the Tulsa & Washington County Line <u>PRESENTLY ZONED/POSTED 55 MPH (NO CHANGE)</u>	3.48 miles

55 MPH

Beginning at the Tulsa & Washington County Line, extending northerly 1.26 miles to the Washington & Osage County Line

PRESENTLY NOT ZONED

PRESENTLY POSTED 55 MPH (ZONING CHANGE)

1.26 miles

=====

TOTAL APPROXIMATE LENGTH ZONED

9.11 miles

Engineering studies have been conducted at these locations in accordance with current Department of Transportation Rules, Regulations, and Policies.

**Commission Approval is Recommended**

**FOR PRESENTATION AT COMMISSION MEETING OF NOVEMBER 2, 2020**

**AGENDA ITEM NO: 136**

**SUBJECT: Safety Improvement Projects**

**a) Leflore County – Commission District II**

Traffic Signal Replacement and Railroad Preemption at the intersections of US-59/US-270 with Avenue C and SH-128 in the city of Heavener. The project is estimated to cost \$325,000 and will be funded with 100% dedicated Federal Safety Funds utilized by the Traffic Engineering Division on an annual basis for priority safety projects. The plans will be produced by Traffic Engineering Division personnel and the project will be let to contract in FFY-2021.

**b) Atoka County – Commission District II**

Traffic Signal Replacement and Coordination Project along US-69/75 in the city of Atoka at the intersections of Redbud Lane, State Highway 3/7 (13<sup>th</sup> Street), and Court Street. The project is estimated to cost \$850,000 and will be funded 100% with Federal Safety Funds utilized by the Traffic Engineering Division on an annual basis for priority safety projects. The plans will be produced by Traffic Division On-Demand contract and the project will be let to contract in FFY-2021.

**COMMISSION APPROVAL IS RECOMMENDED**

**FOR PRESENTATION AT THE NOVEMBER 2, 2020 COMMISSION MEETING**

**AGENDA ITEM NO.:** 137(a)

**SUBJECT:** Land Sale, District I, FAP-F-53(45), Part of Parcel 50 and I-40-6(50)239, Part of Parcels 19 & 23, Section 7, T11N, R3E, Okmulgee County.

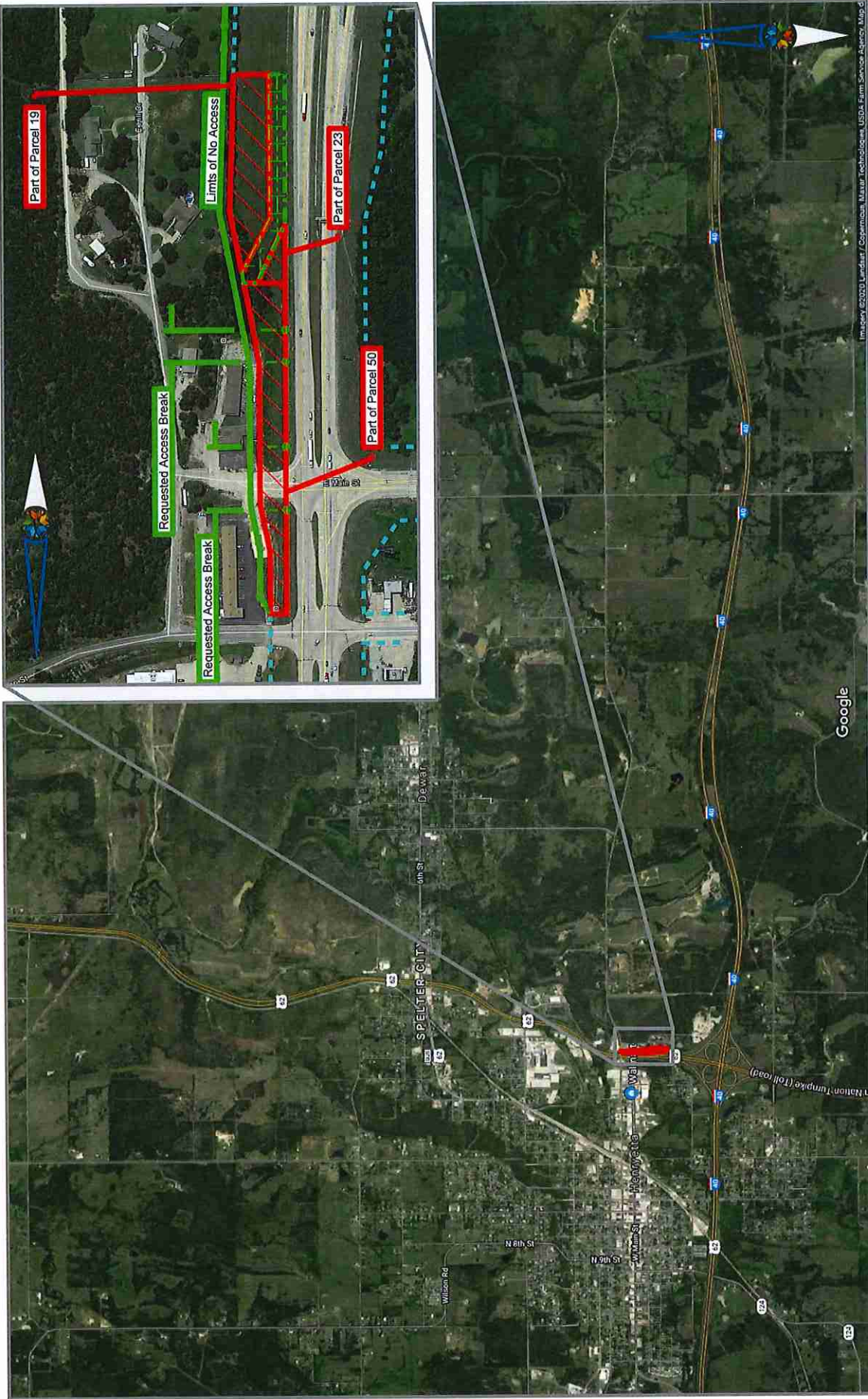
**LOCATION:** Located on the east side of US-75 at the NE & SE corners of US-75 and E. Main St. in Henryetta, OK.

In 1963 & 1964, the Oklahoma Department of Transportation acquired by easements as partial takings 12.71 acres of right-of-way and access rights for the re-construction of US Highway No. 75 and Interstate Highway No. 40 on the above referenced projects.

The Department received a request from Daniel Chambers with QuikTrip Corporation requesting the Department to dispose of any portions of Parcels 50, 19 & 23 on the above referenced projects, excluding the platted "H" Street of the Martin & O'Hornett 2<sup>nd</sup> Addition as public right-of-way. QuikTrip Corporation owns the abutting property to the east to construct a new QuikTrip Convenience Station. The Department has determined that 2.37 acres of right-of-way and access rights on Parcels 50, 19 & 23 is surplus to the Department's needs.

QuikTrip Corporation has accepted the Department's individual offer for the 2.37 acres of right-of-way and access rights based on the current fair market value of \$186,250.00.

We recommend approval of this sale.



Limits of No Access

Existing Right-of-Way

Requested Area

Easement



**OKLAHOMA**  
Transportation

# LOCATION MAP

US-75 | I-40-6(41)239(50) | F-53(45) | Okmulgee County

**SUBJECT PROPERTY:** Pt. of Parcels 19, 23, & 50  
 Surplus Land: ≈ 2.37 acres  
 Direct Offer Value: \$186,250.00

**FOR PRESENTATION AT THE NOVEMBER 2, 2020 COMMISSION MEETING**

**AGENDA ITEM NO.:** 137(b)

**SUBJECT:** Land Sale, District IV, I-35-4(166)149 aka 10869(05),  
Part of Parcel 4, Section 21, T15N, R2W, Logan County.

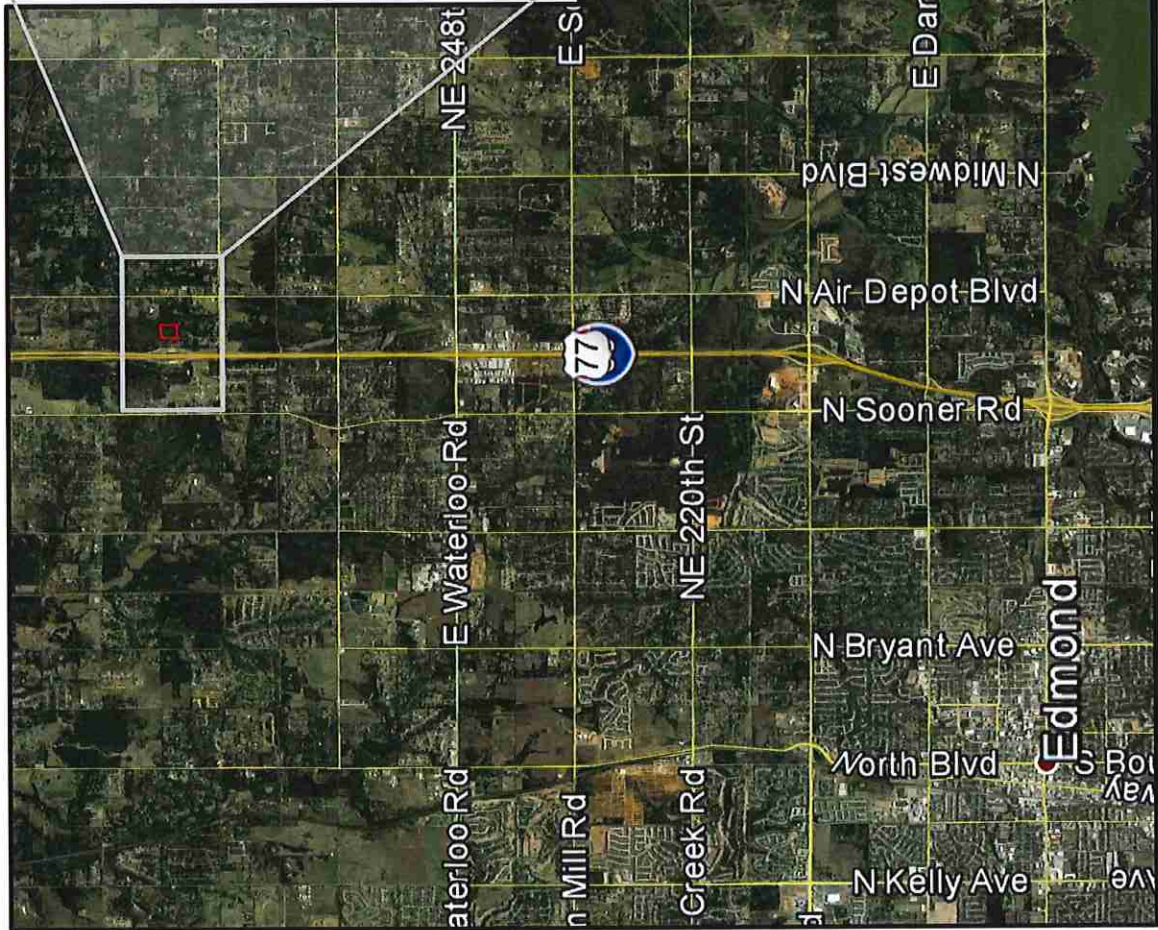
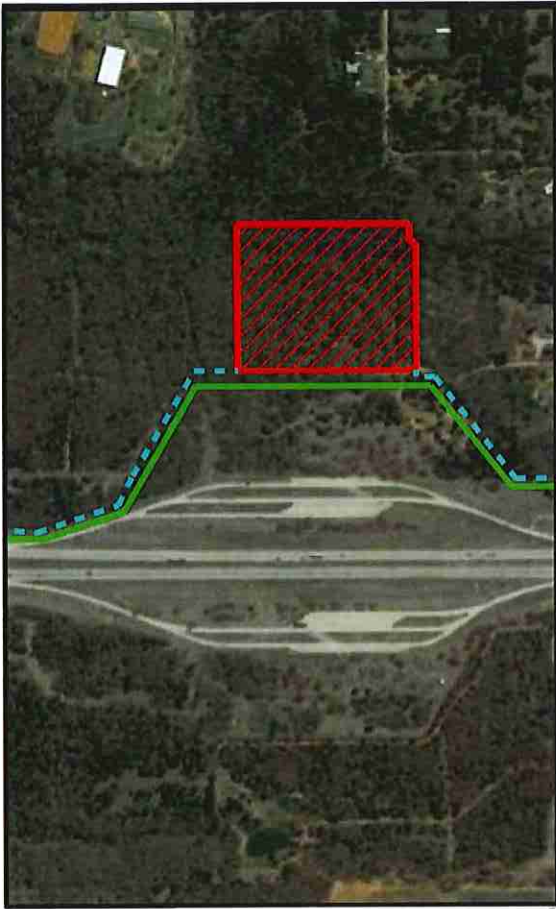
**LOCATION:** Located on the east side of I-35 at the former Guthrie Rest  
Area south of Guthrie, OK.

In 1996, the Oklahoma Department of Transportation acquired in fee as a total taking of 12.08 acres as right-of-way and access rights to expand the then existing I-35 rest areas on the above referenced project.

The Department received a request from Randy Lee requesting the Department to dispose of a portion of Parcel 4 on the above referenced project. Randy Lee owns an abutting property and would like to expand his business. The Department has determined that 11.25 acres of Parcel 4 are surplus to the Department's needs. The Department will retain the rights of access to the rest area and I-35.

Bid packets were prepared and sent out with the minimum bid based on the current fair market value of \$90,600.00 for the 11.25 acre property. On October 15, 2020 the Department received and opened one (1) bid. The Department accepted the high bid of \$100,600.00 for the 11.25 acres from Drover Properties, LLC.

We recommend approval of this sale.



Limits of No Access

Existing Right-of-Way

Requested Area

Easement



**OKLAHOMA**  
Transportation

**LOCATION MAP**  
I-35 | JP 10869 (05) | Logan County

**SUBJECT PROPERTY:**  
Surplus Land:  
Bid for Sale:

Part of Parcel 4  
≈ 11.25 acres  
\$100,600.00

**FOR PRESENTATION AT THE COMMISSION MEETING ON NOVEMBER 2, 2020**

**AGENDA ITEM NO: 138**

**SUBJECT: Engineering Contracts**

**a) Statewide – All Districts - On-Demand Public Involvement Services (CI-2251)**

The Department has selected three (3) firms to provide Public Involvement Services. These firms may be utilized on an as-needed basis in support of the Department's staff.

CI-2251A	Blanton and Associates, Inc.
CI-2251B	Garver, LLC
CI-2251C	Poe and Associates, Inc.

The aggregate not to exceed amount for these three (3) contracts is \$750,000.00 and will be task driven for the on-call services and agreed upon by the Consulting Firm and Department as needed.

**b) Cherokee County – Commission District I (CI-2219A)**

The Department has selected BKL, Inc. to prepare construction plans for SH-82: from 2.57 miles south of SH-82C junction, north 6 miles. Services to include environmental, geotechnical investigations, pavement design, preliminary and final design and will culminate in the submittal of plans, specifications and estimates, (PS&E).

CI-2219A	BKL, Inc.
Total Not to Exceed Amount	\$703,690.00

Project JP-30575(04) is included in the 8 year construction work plan with a scheduled let date in FFY 2026. The total estimate for construction for this project is \$11,540,000.00.

**c) Coal County – Commission District III (CI-2223D)**

The Department has selected HNTB Corporation to prepare construction plans for US-75: Over Black Creek, begin 6.25 miles north of SH-3. Services to include environmental, geotechnical investigations, pavement design, preliminary and final design and will culminate in the submittal of plans, specifications and estimates, (PS&E).

CI-2223D	HNTB Corporation
Total Not to Exceed Amount	\$291,115.00

Project JP- 32159(04) is included in the 8 year construction work plan with a scheduled let date in FFY 2026. The total estimate for construction for this project is \$1,663,500.00.



**d) Johnston County – Commission District III (CI-2219B)**

The Department has selected H.W. Lochner, Inc. to prepare construction plans for SH-48: from Atoka County Line, north 7.37 miles to SH-48A. Services to include survey, geotechnical investigations, pavement design, preliminary and final design and will culminate in the submittal of plans, specifications and estimates, (PS&E).

CI-2219B	H.W. Lochner, Inc.
Total Not to Exceed Amount	\$632,465.00

Project JP-28920(04) is included in the 8 year construction work plan with a scheduled let date in FFY 2025. The total estimate for construction for this project is \$18,330,501.00.

**e) Johnston County – Commission District III (CI-2219C)**

The Department has selected Grossman and Keith Engineering Company to prepare construction plans for SH-99: from 0.61 miles north of SH-22, north 5.31 miles. Services to include survey, environmental, geotechnical investigations, pavement design, preliminary and final design and will culminate in the submittal of plans, specifications and estimates, (PS&E).

CI-2219C	Grossman and Keith Engineering Company
Total Not to Exceed Amount	\$574,772.00

Project JP-23267(04) is included in the 8 year construction work plan with a scheduled let date in FFY 2025. The total estimate for construction for this project is \$17,533,839.00.

**f) Canadian County – Commission District IV (CI-2223F)**

The Department has selected Olsson Inc. to prepare construction plans for I-40: Country Club Road over I-40, 2 miles west of US-81. Services to include environmental, geotechnical investigations, pavement design, preliminary and final design and will culminate in the submittal of plans, specifications and estimates, (PS&E).

CI-2223F	Olsson, Inc.
Total Not to Exceed Amount	\$664,240.00

Project JP- 32689(04) is included in the 8 year construction work plan with a scheduled let date in FFY 2024. The total estimate for construction for this project is \$4,000,000.00.

**g) Grant County – Commission District IV (CI-2223J)**

The Department has selected Walter P. Moore & Associates Inc. to prepare construction plans for SH-132: Over unnamed Creek, 0.35 miles north of US-64 junction. Services to include environmental, pavement design, preliminary and final design and will culminate in the submittal of plans, specifications and estimates, (PS&E).

CI-2223J	Walter P. Moore & Associates, Inc.
Total Not to Exceed Amount	\$125,600.00

Project JP- 31922(04) is included in the 8 year construction work plan with a scheduled let date in FFY 2023. The total estimate for construction for this project is \$1,700,000.00.

**h) Kay County – Commission District IV (CI-2222F)**

The Department has selected MKEC Engineering Inc. to prepare construction plans for SH-11: from US-77, east 7.0 miles towards Kaw City. Services to include environmental, geotechnical investigations, pavement design, preliminary and final design and will culminate in the submittal of plans, specifications and estimates, (PS&E).

CI-2222F	MKEC Engineering, Inc.
Total Not to Exceed Amount	\$956,735.00

Project JP-31022(04) is included in the 8 year construction work plan with a scheduled let date in FFY 2024. The total estimate for construction for this project is \$16,000,000.00.

**i) Texas County – Commission District VI (CI-2223B)**

The Department has selected CEC Corporation to prepare construction plans for SH-94: over the Beaver River, 3.1 miles north of junction SH-94/SH-3. Services to include geotechnical investigations, pavement design, preliminary and final design and will culminate in the submittal of plans, specifications and estimates, (PS&E).

CI-2223B	CEC Corporation
Total Not to Exceed Amount	\$473,484.50

Project JP- 33323(04) is included in the 8 year construction work plan with a scheduled let date in FFY 2025. The total estimate for construction for this project is \$3,950,000.00.

**j) Comanche County – Commission District VII (CI-2222G)**

The Department has selected TEIM Design PLLC to prepare construction plans for US-277: from just east of the northbound H.E. Bailey Turnpike off ramp east 0.4 miles to the US-277/SH-17 intersection. Services to include geotechnical investigations, pavement design, preliminary and final design and will culminate in the submittal of plans, specifications and estimates, (PS&E).

CI-2222G	TEIM Design, PLLC
Total Not to Exceed Amount	\$268,600.00

Project JP- 33758(04) is included in the 8 year construction work plan with a scheduled let date in FFY 2027. The total estimate for construction for this project is \$4,090,000.00.

**k) Creek County – Commission District VIII (CI-2223G)**

The Department has selected TEIM Design PLLC to prepare construction plans for SH-16: over Sand Creek, 0.7 miles east of the SH-48/SH-16 junction. Services to include survey, pavement design, preliminary and final design and will culminate in the submittal of plans, specifications and estimates, (PS&E).

CI-2223G	TEIM Design, PLLC
Total Not to Exceed Amount	\$281,250.00

Project JP- 29682(04) is included in the 8 year construction work plan with a scheduled let date in FFY 2025. The total estimate for construction for this project is \$2,731,080.00.

**l) Rogers County – Commission District VIII (CI-2223H)**

The Department has selected Tetra Tech Inc. to prepare construction plans for SH-66: over Bird Creek (northbound) & road under, 3.68 miles north of I-44. Services to include survey, geotechnical investigations, pavement design, preliminary and final design and will culminate in the submittal of plans, specifications and estimates, (PS&E).

CI-2223H	Tetra Tech, Inc.
Total Not to Exceed Amount	\$597,800.00

Project JP- 20899(09) is included in the 8 year construction work plan with a scheduled let date in FFY 2023. The total estimate for construction for this project is \$6,314,151.00.

**APPROVAL IS RECOMMENDED**

**FOR PRESENTATION AT THE COMMISSION MEETING ON NOVEMBER 2, 2020**

**AGENDA ITEM NO: 139**

**SUBJECT: Engineering Contract Supplements**

**a) LeFlore County – Commission District II (EC-1327, Supplement 3)**

The Department previously authorized Poe and Associates, Inc. to perform preliminary engineering and to prepare final design plans for US-59: from Sunset Corners extending west approximately 5.0 miles. This supplement is for additional engineering to develop final construction plans.

EC-1327	Poe and Associates, Inc.
Supplement Not to Exceed Amount	\$983,027.00

This brings the total engineering contract cost, including this supplement to \$1,982,027.00.

JP-17127(04) is included in the 8 year construction work plan with a scheduled let date in FFY 2023. Total estimate for construction of the project is \$39,206,710.00.

**b) Cleveland County – Commission District III (CI-2010, Supplement 1)**

The Department previously authorized H.W. Lochner Inc. to prepare final design plans for SH-9: from 108<sup>th</sup> Ave East, east to 156<sup>th</sup> Ave East (south) in Norman. This supplement is for additional engineering to develop final construction plans.

CI-2010	H.W. Lochner, Inc.
Supplement Not to Exceed Amount	\$162,990.00

This brings the total engineering contract cost, including this supplement to \$1,300,790.00.

JP-20266(14) is included in the 8 year construction work plan with a scheduled let date in FFY 2025. Total estimate for construction of the project is \$21,670,000.00.

**APPROVAL IS RECOMMENDED**

**Change Orders with Cumulative Total of \$75,000 or Less (Information Only)**

**NOVEMBER 02, 2020 Commission Meeting**

ITEM	COUNTY	PROJECT NUMBER	FED OVER	CONTRACT	JPN	CHANGE ORDER	UNDER/OVER RUN
140A	CANADIAN	STP-209C(071)CI	<input type="checkbox"/>	190173	3118104	003	\$1,595.00
140B	CARTER	STP-210C(066)PM	<input type="checkbox"/>	180347	2410407	005	\$43,065.40
140C	CIMARRON	STP-213C(026)CI	<input type="checkbox"/>	200089	3177404	001	-\$88,950.78
140D	COAL	STP-215D(031)CI	<input type="checkbox"/>	190386	3066504	001	\$74,502.80
140E	CUSTER	NHPPI-4000-(078)PM	<input type="checkbox"/>	200132	2791108	001	\$6,025.80
140F	CUSTER	NHPPI-4000-(078)PM	<input type="checkbox"/>	200132	2791108	002	\$2,376.00
140G	CUSTER	SBR-220C(066)SB	<input type="checkbox"/>	200101	3179304	001	\$1,476.30
140H	GARFIELD	SBR-224N(066)SB	<input type="checkbox"/>	190351	3277104	002	\$18,601.95
140I	GARVIN	CIRB-225C(073)RB / CIRB-225C(074)RB	<input type="checkbox"/>	180354	2784804	003	\$39,662.63
140J	HASKELL	CIRB-231C(040)RB	<input type="checkbox"/>	200043	2849904	001	\$18,738.00
140K	HASKELL	CIRB-231C(040)RB	<input type="checkbox"/>	200043	2849904	003	\$12,668.96
140L	JEFFERSON	STP-234D(046)CI	<input type="checkbox"/>	190234	2936804	001	\$5,155.62
140M	JEFFERSON	CIRB-234C(045)RB	<input type="checkbox"/>	190142	2991404	002	\$54,632.41
140N	LEFLORE	STP-240N(079)PM	<input type="checkbox"/>	200228	3128904	001	\$20,400.00
140O	MAJOR	SSP-019N(136)PM	<input type="checkbox"/>	200217	2700510	001	\$45,596.61
140P	MARSHALL	SSP-248F(051)PM	<input type="checkbox"/>	200231	2314509	001	\$74,990.00
140Q	MUSKOGEE	CIRB-251C(095)RB	<input type="checkbox"/>	190119	2938304	003	\$10,612.69
140R	OKFUSKEE	ACHSIPG-254C(039)AD / TAP-254D(038)TP	<input type="checkbox"/>	180138	3296604	006	\$0.00
140S	OKLAHOMA	SBR-255N(517)SB	<input type="checkbox"/>	200185	2710704	002	\$0.00
140T	OTTAWA	SSP-158B(119)PM	<input type="checkbox"/>	180297	2427304	001	\$6,695.00
140U	PITTSBURG	SSP-261N(092)PM	<input type="checkbox"/>	200208	3434104	001	\$21,200.00
140V	TULSA	NHPPI-4400(058)PM	<input type="checkbox"/>	190331	2969304	004	\$6,187.50

**\$375,231.89**

## Change Orders with Cumulative Total of \$75,000 or Less (Information Only)

**November 02, 2020 Commission Meeting**

<b>Project Number:</b>	STP-209C(071)CI	<b>CO APPROVAL:</b>	Oct. 07, 2020	<b>AGENDA ITEM</b>	
		<b>Contract ID:</b>	190173	<b>140A</b>	
<b>Contractor :</b>	SEWELL BROS., INC.	<b>Job Piece No.:</b>	31181(04)		
		<b>Highway No.:</b>	COUNTY ROAD (EW-112)		
<b>Designer:</b>	CEC CORPORATION	<b>Div. / County.:</b>	04 / CANADIAN		
<b>Description:</b>	BRIDGE AND APPROACHES COUNTY ROAD (EW-112): OVER ARAPAHO CREEK, 2.0 MILES WEST OF THE US-81 JUNCTION NEAR UNION CITY. PROJECT LENGTH = 0.378 MILE				
<b>Contract Amount:</b>	\$1,473,205.26	<b>Funds Available:</b>	\$1,476,000.26	<b>Funds Paid(%) :</b>	86%
<b>Change Order</b>	3	<b>Original Time Used:</b>	100%	<b>Revised Time Used:</b>	100%

Change Order No. 3 approves a supplemental agreement and an additional appropriation in the amount of \$1,595.00.

Site Requirement: This change provides payment for the additional construction traffic control required to provide direction to the traveling public during construction due to closing the highway in lieu of constructing a temporary shoo-fly detour as planned due to discovery of an underground spring which made the shoo-fly detour cost prohibitive. This change extends the contract time two days due to utility and weather related delays.

<b>NEW ITEM</b>		<b>\$1,595.00</b>
Construction Traffic Control	1.00 LSUM	\$1,595.00 /LSUM
		<b>\$1,595.00</b>

<b>CHANGE ORDER ACTIONS</b>						
CHANGE ORDER NO.	(+ Overrun (-) Underrun Amount (\$)	%	Appropriated Amount (\$)	%	Supplemental Agreement Amount(\$)	%
1	\$0.00	0.00%	\$0.00	0.00%	\$0.00	0.00%
2	\$1,200.00	0.08%	\$1,200.00	0.08%	\$1,200.00	0.08%
3	\$1,595.00	0.11%	\$1,595.00	0.11%	\$1,595.00	0.11%
<b>TOTAL</b>	<b>\$2,795.00</b>	<b>0.19%</b>	<b>\$2,795.00</b>	<b>0.19%</b>	<b>\$2,795.00</b>	<b>0.19%</b>

## Change Orders with Cumulative Total of \$75,000 or Less (Information Only)

**November 02, 2020 Commission Meeting**

<b>Project Number:</b>	STP-210C(066)PM	<b>CO APPROVAL:</b>	Oct. 08, 2020	<b>AGENDA ITEM</b>
		<b>Contract ID:</b>	180347	<b>140B</b>
<b>Contractor :</b>	OVERLAND CORPORATION	<b>Job Piece No.:</b>	24104(07)	
		<b>Highway No.:</b>	SH-53	
<b>Designer:</b>	GARVER ENGINEERING	<b>Div. / County.:</b>	07 / CARTER	
<b>Description:</b>	GRADE, DRAIN, SURFACE, AND BRIDGE SH-53: FROM 6.6 MILES EAST OF THE SH-76 JUNCTION, EXTEND EAST NEAR SPRINGER. PROJECT LENGTH = 7.986 MILES			
<b>Contract Amount:</b>	\$17,577,630.27	<b>Funds Available:</b>	\$17,627,881.17	<b>Funds Paid(%) :</b> 53%
<b>Change Order</b>	5	<b>Original Time Used:</b>	82%	<b>Revised Time Used:</b> 82%

Change Order No. 5 approves an additional appropriation in the amount of \$43,065.40.

Engineering: This change provides payment for the overrun of several drainage pipe pay items required to complete the project as planned due to the pipe lengths with culvert end treatments being calculated incorrectly.

OVERRUN ITEMS				\$43,065.40
18" R. C. Pipe Class III	76.00 LF	\$45.50 /LF		\$3,458.00
24" R. C. Pipe Class III	8.00 LF	\$57.05 /LF		\$456.40
30" R. C. Pipe Class III	40.00 LF	\$70.05 /LF		\$2,802.00
42" R. C. Pipe Class III	15.00 LF	\$107.00 /LF		\$1,605.00
18" Corr. Galv. Steel Pipe	240.00 LF	\$30.50 /LF		\$7,320.00
24" Corr. Galv. Steel Pipe	176.00 LF	\$36.05 /LF		\$6,344.80
30" Corr. Galv. Steel Pipe	20.00 LF	\$42.60 /LF		\$852.00
36" Corr. Galv. Steel Pipe	336.00 LF	\$60.20 /LF		\$20,227.20

CHANGE ORDER ACTIONS						
CHANGE ORDER NO.	(+) Overrun (-) Underrun Amount (\$)	%	Appropriated Amount (\$)	%	Supplemental Agreement Amount(\$)	%
1	\$0.00	0.00%	\$0.00	0.00%	\$0.00	0.00%
2	\$0.00	0.00%	\$0.00	0.00%	\$0.00	0.00%
3	\$0.00	0.00%	\$0.00	0.00%	\$0.00	0.00%
4	\$7,185.50	0.04%	\$7,185.50	0.04%	\$7,185.50	0.04%
5	\$43,065.40	0.25%	\$43,065.40	0.25%	\$0.00	0.00%
<b>TOTAL</b>	<b>\$50,250.90</b>	<b>0.29%</b>	<b>\$50,250.90</b>	<b>0.29%</b>	<b>\$7,185.50</b>	<b>0.04%</b>

## Change Orders with Cumulative Total of \$75,000 or Less (Information Only)

November 02, 2020 Commission Meeting

<b>Project Number:</b>	STP-213C(026)CI		<b>CO APPROVAL:</b>	Oct. 01, 2020	<b>AGENDA ITEM</b>
			<b>Contract ID:</b>	200089	
<b>Contractor :</b>	J & R SAND COMPANY, INC.		<b>Job Piece No.:</b>	31774(04)	140C
			<b>Highway No.:</b>	COUNTY ROAD (EW-23)	
<b>Designer:</b>	CED #8	<b>Div. / County.:</b>	06 / CIMARRON		
<b>Description:</b>	GRADE, DRAIN, AND SURFACE COUNTY ROAD (EW-23): FROM THE US-385 JUNCTION, EXTEND EAST NEAR BOISE CITY. PROJECT LENGTH = 2.022 MILES				
<b>Contract Amount:</b>	\$2,137,444.60	<b>Funds Available:</b>	\$2,137,444.60	<b>Funds Paid(%) :</b>	92%
<b>Change Order</b>	1	<b>Original Time Used:</b>	67%	<b>Revised Time Used:</b>	67%

Change Order No. 1 approves a supplemental agreement resulting in an underrun to the contract in the amount of \$88,950.78.

Site Requirement: This change documents the underrun of the solid slab sodding pay item due to achieving adequate growth of the existing native grasses prior to placing slab sod. This change also provides for the unrecoverable expenses and lost overhead incurred by the contractor due to the significant underrun of this major item.

<b>NEW ITEM</b>	<b>\$9,883.42</b>
Solid Slab Sodding (Lost Overhead)	1,678.00 SY      \$5.89 /SY      \$9,883.42
<b>UNDERRUN ITEM</b>	<b>-\$98,834.20</b>
Solid Slab Sodding	-16,780.00 SY      \$5.89 /SY      -\$98,834.20

CHANGE ORDER ACTIONS						
CHANGE ORDER NO.	(+) Overrun (-) Underrun Amount (\$)	%	Appropriated Amount (\$)	%	Supplemental Agreement Amount(\$)	%
1	-\$88,950.78	-4.16%	\$0.00	0.00%	\$0.00	0.00%
<b>TOTAL</b>	<b>-\$88,950.78</b>	<b>-4.16%</b>	<b>\$0.00</b>	<b>0.00%</b>	<b>\$0.00</b>	<b>0.00%</b>



## Change Orders with Cumulative Total of \$75,000 or Less (Information Only)

November 02, 2020 Commission Meeting

<b>Project Number:</b>	STP-215D(031)CI		<b>CO APPROVAL:</b>	Sep. 25, 2020	<b>AGENDA ITEM</b>
			<b>Contract ID:</b>	190386	<b>140D</b>
<b>Contractor :</b>	BRIDGECO CONTRACTORS, INC.		<b>Job Piece No.:</b>	30665(04)	
			<b>Highway No.:</b>	COUNTY ROAD (OLD STA	
<b>Designer:</b>	EST		<b>Div. / County.:</b>	03 / COAL	
<b>Description:</b>	BRIDGE AND APPROACHES COUNTY ROAD (OLD STATE HIGHWAY 3); OVER LEADER CREEK, 1.7 MILES EAST OF THE SH-48 JUNCTION NEAR TUPELO. PROJECT LENGTH = 0.188 MILE				
<b>Contract Amount:</b>	\$1,017,103.91	<b>Funds Available:</b>	\$1,091,606.71	<b>Funds Paid(%) :</b>	80%
<b>Change Order</b>	1	<b>Original Time Used:</b>	126%	<b>Revised Time Used:</b>	126%

Change Order No. 1 approves a supplemental agreement and an additional appropriation in the amount of \$74,502.80.

Site Requirement: This change provides payment for the obstructions pay item required to remove old spread footings due to discovering during construction that they were in conflict with the new piles; for the utilization of CLSM to backfill the abutments in lieu of the granular backfill material as planned; and for the barbed wire fence pay item required to utilize metal stretch and brace posts in lieu of wooden posts as planned due to a request by the County Commissioner. This change reclassifies the unit price for unclassified borrow due to the additional volume created by the removal of the old spread footings. This change documents the underrun of the removal of concrete pavement with asphalt overlay due to discovering during construction that the existing roadway was only asphalt. This change extends the contract time twenty-one days to remove the existing spread footings.

<b>NEW ITEMS</b>			<b>\$101,201.90</b>
CLSM Backfill	66.00 CY	\$194.00 /CY	\$12,804.00
Obstructions	1.00 LSUM	\$64,239.90 /LSUM	\$64,239.90
Unclassified Borrow (Reclassified)	771.00 CY	\$30.00 /CY	\$23,130.00
Fence-Style SWF (5 Barbed Wire)	200.00 LF	\$5.14 /LF	\$1,028.00
<b>UNDERRUN ITEMS</b>			<b>-\$26,699.10</b>
Removal of Concrete Pavement w/Asphalt Overlay	-1,805.00 SY	\$12.00 /SY	-\$21,660.00
Granular Backfill	-66.00 CY	\$76.35 /CY	-\$5,039.10

CHANGE ORDER ACTIONS						
CHANGE ORDER NO.	(+) Overrun (-) Underrun Amount (\$)	%	Appropriated Amount (\$)	%	Supplemental Agreement Amount(\$)	%
1	\$74,502.80	7.32%	\$74,502.80	7.32%	\$74,502.80	7.32%
<b>TOTAL</b>	<b>\$74,502.80</b>	<b>7.32%</b>	<b>\$74,502.80</b>	<b>7.32%</b>	<b>\$74,502.80</b>	<b>7.32%</b>

## Change Orders with Cumulative Total of \$75,000 or Less (Information Only)

November 02, 2020 Commission Meeting

<b>Project Number:</b>	NHPPI-4000-(078)PM	<b>CO APPROVAL:</b>	Sep. 22, 2020	<b>AGENDA ITEM</b>	
		<b>Contract ID:</b>	200132	140E	
<b>Contractor :</b>	SEWELL BROS., INC.	<b>Job Piece No.:</b>	27911(08)		
		<b>Highway No.:</b>	I-40 ON RAMP		
<b>Designer:</b>	CEC CORPORATION	<b>Div. / County.:</b>	05 / CUSTER		
<b>Description:</b>	GRADE, DRAIN, AND SURFACE I-40 ON RAMP/FRONTAGE ROAD: FROM 2.2 MILES EAST OF THE SH-54 JUNCTION, EXTEND NORTHEAST IN WEATHERFORD. PROJECT LENGTH = 0.759 MILE				
<b>Contract Amount:</b>	\$2,379,625.77	<b>Funds Available:</b>	\$2,388,027.57	<b>Funds Paid(%) :</b>	9%
<b>Change Order</b>	1	<b>Original Time Used:</b>	11%	<b>Revised Time Used:</b>	11%

Change Order No. 1 approves a supplemental agreement and an additional appropriation in the amount of \$6,025.80.

Site Requirement: This change provides payment for the sawing pavement pay item required to remove the existing curb and gutter without damaging the adjacent asphalt surfacing due to multiple asphalt overlays overlapping the gutter section.

<b>NEW ITEM</b>	<b>\$6,025.80</b>
Sawing Pavement	996.00 LF      \$6.05 /LF      \$6,025.80

CHANGE ORDER ACTIONS						
CHANGE ORDER NO.	(+) Overrun (-) Underrun Amount (\$)	%	Appropriated Amount (\$)	%	Supplemental Agreement Amount(\$)	%
1	\$6,025.80	0.25%	\$6,025.80	0.25%	\$6,025.80	0.25%
2	\$2,376.00	0.10%	\$2,376.00	0.10%	\$2,376.00	0.10%
<b>TOTAL</b>	<b>\$8,401.80</b>	<b>0.35%</b>	<b>\$8,401.80</b>	<b>0.35%</b>	<b>\$8,401.80</b>	<b>0.35%</b>

## Change Orders with Cumulative Total of \$75,000 or Less (Information Only)

### November 02, 2020 Commission Meeting

<b>Project Number:</b>	NHPP1-4000-(078)PM	<b>CO APPROVAL:</b>	Sep. 29, 2020	<b>AGENDA ITEM</b>	
		<b>Contract ID:</b>	200132	140F	
<b>Contractor :</b>	SEWELL BROS., INC.	<b>Job Piece No.:</b>	27911(08)		
		<b>Highway No.:</b>	I-40 ON RAMP		
<b>Designer:</b>	CEC CORPORATION	<b>Div. / County.:</b>	05 / CUSTER		
<b>Description:</b>	GRADE, DRAIN, AND SURFACE I-40 ON RAMP/FRONTAGE ROAD: FROM 2.2 MILES EAST OF THE SH-54 JUNCTION, EXTEND NORTHEAST IN WEATHERFORD. PROJECT LENGTH = 0.759 MILE				
<b>Contract Amount:</b>	\$2,379,625.77	<b>Funds Available:</b>	\$2,388,027.57	<b>Funds Paid(%) :</b>	9%
<b>Change Order</b>	2	<b>Original Time Used:</b>	11%	<b>Revised Time Used:</b>	11%

Change Order No. 2 approves a supplemental agreement and an additional appropriation in the amount of \$2,376.00.

Site Requirement: This change provides payment for the arrow display pay item required to provide temporary delineation and safety to the travelling public due to utilizing lane closures in lieu of portable longitudinal barrier in some phases of construction.

<b>NEW ITEM</b>	<b>\$2,376.00</b>
Arrow Display (Type C)	180.00 SD      \$13.20 /SD      \$2,376.00

CHANGE ORDER ACTIONS						
CHANGE ORDER NO.	(+) Overrun (-) Underrun Amount (\$)	%	Appropriated Amount (\$)	%	Supplemental Agreement Amount(\$)	%
1	\$6,025.80	0.25%	\$6,025.80	0.25%	\$6,025.80	0.25%
2	\$2,376.00	0.10%	\$2,376.00	0.10%	\$2,376.00	0.10%
<b>TOTAL</b>	<b>\$8,401.80</b>	<b>0.35%</b>	<b>\$8,401.80</b>	<b>0.35%</b>	<b>\$8,401.80</b>	<b>0.35%</b>

## Change Orders with Cumulative Total of \$75,000 or Less (Information Only)

**November 02, 2020 Commission Meeting**

<b>Project Number:</b>	SBR-220C(066)SB	<b>CO APPROVAL:</b>	Sep. 25, 2020	<b>AGENDA ITEM</b>
		<b>Contract ID:</b>	200101	<b>140G</b>
<b>Contractor :</b>	HASKELL LEMON CONSTRUCTION CO.	<b>Job Piece No.:</b>	31793(04)	
		<b>Highway No.:</b>	SH-73	
<b>Designer:</b>	WHITE ENGINEERING ASSOCIATES, INC.	<b>Div. / County.:</b>	05 / CUSTER	
<b>Description:</b>	BRIDGE REHABILITATION SH-73: OVER LITTLE PANTHER CREEK, 5.7 MILES EAST OF THE SH-34 JUNCTION NEAR FOSS LAKE. PROJECT LENGTH = 0.170 MILE			
<b>Contract Amount:</b>	\$1,010,954.05	<b>Funds Available:</b>	\$1,012,430.35	<b>Funds Paid(%):</b> 59%
<b>Change Order</b>	1	<b>Original Time Used:</b>	54%	<b>Revised Time Used:</b> 54%

Change Order No. 1 approves an additional appropriation in the amount of \$1,476.30.

Engineering: This change provides payment for the overrun of the epoxy coated reinforcing steel pay item required to complete the project as planned due some of the quantity being inadvertently omitted from the bar list in the plans. This change extends the contract time and Milestone No. 2 time four days due to the missing epoxy coated reinforcing steel quantity.

<b>OVERRUN ITEM</b>	<b>\$1,476.30</b>
Epoxy Coated Reinforcing Steel	798.00 LB      \$1.85 /LB      \$1,476.30

<b>CHANGE ORDER ACTIONS</b>						
CHANGE ORDER NO.	(+ Overrun (-) Underrun Amount (\$)	%	Appropriated Amount (\$)	%	Supplemental Agreement Amount(\$)	%
1	\$1,476.30	0.15%	\$1,476.30	0.15%	\$0.00	0.00%
<b>TOTAL</b>	<b>\$1,476.30</b>	<b>0.15%</b>	<b>\$1,476.30</b>	<b>0.15%</b>	<b>\$0.00</b>	<b>0.00%</b>

## Change Orders with Cumulative Total of \$75,000 or Less (Information Only)

November 02, 2020 Commission Meeting

<b>Project Number:</b>	SBR-224N(066)SB	<b>CO APPROVAL:</b>	Oct. 07, 2020	<b>AGENDA ITEM</b>
		<b>Contract ID:</b>	190351	
<b>Contractor :</b>	LOGOS CONSTRUCTION CO., LLC	<b>Job Piece No.:</b>	32771(04)	<b>140H</b>
		<b>Highway No.:</b>	US-60	
<b>Designer:</b>	OLSSON ASSOCIATES	<b>Div. / County.:</b>	04 / GARFIELD	
<b>Description:</b>	BRIDGE REHABILITATION US-60: OVER CLEAR CREEK, 1.6 MILES EAST OF THE SH-132 JUNCTION NEAR ENID. PROJECT LENGTH = 0.055 MILE			
<b>Contract Amount:</b>	\$670,608.75	<b>Funds Available:</b>	\$689,210.70	<b>Funds Paid(%) :</b> 89%
<b>Change Order</b>	2	<b>Original Time Used:</b>	99%	<b>Revised Time Used:</b> 99%

Change Order No. 2 approves a supplemental agreement and an additional appropriation in the amount of \$18,601.95.

Site Requirement: This change provides payment for the reinforcing steel pay item required to install additional bars of steel into the deck near the joints due to discovering during construction that the existing deck did not contain a top mat of reinforcing steel; and for the removal of concrete pavement with asphalt overlay pay item required to remove the existing pavement material underneath the approach slabs due to discovering during construction it was more deteriorated than expected.

<b>NEW ITEMS</b>			<b>\$18,601.95</b>
Reinforcing Steel	1,357.00 LB	\$9.85 /LB	\$13,366.45
Removal of Conc. Pav. w/Asph. Overlay	35.56 SY	\$147.23 /SY	\$5,235.50

CHANGE ORDER ACTIONS						
CHANGE ORDER NO.	(+) Overrun (-) Underrun Amount (\$)	%	Appropriated Amount (\$)	%	Supplemental Agreement Amount(\$)	%
1	-\$4,200.00	-0.63%	\$0.00	0.00%	\$0.00	0.00%
2	\$18,601.95	2.77%	\$18,601.95	2.77%	\$18,601.95	2.77%
<b>TOTAL</b>	<b>\$14,401.95</b>	<b>2.15%</b>	<b>\$18,601.95</b>	<b>2.77%</b>	<b>\$18,601.95</b>	<b>2.77%</b>

## Change Orders with Cumulative Total of \$75,000 or Less (Information Only)

**November 02, 2020 Commission Meeting**

<b>Project Number:</b>	CIRB-225C(073)RB / CIRB-225C(074)RB		<b>CO APPROVAL:</b>	Sep. 24, 2020	<b>AGENDA ITEM</b>
			<b>Contract ID:</b>	180354	<b>140I</b>
<b>Contractor :</b>	OVERLAND CORPORATION		<b>Job Piece No.:</b>	27848(04)	
			<b>Highway No.:</b>	COUNTY ROAD	
<b>Designer:</b>	CEC CORPORATION		<b>Div. / County.:</b>	03 / GARVIN	
<b>Description:</b>	GRADE, DRAIN, AND SURFACE COUNTY ROAD (INDIAN MERIDIAN ROAD/NS-323): FROM THE SH-29 JUNCTION, EXTEND SOUTH NEAR WYNNEWOOD. PROJECT LENGTH = 5.014 MILES				
<b>Contract Amount:</b>	\$5,076,832.92	<b>Funds Available:</b>	\$5,132,846.73	<b>Funds Paid(%) :</b>	94%
<b>Change Order</b>	3	<b>Original Time Used:</b>	99%	<b>Revised Time Used:</b>	99%

Change Order No. 3 approves a supplemental agreement and an additional appropriation in the amount of \$39,662.63.

Site Requirement: This change provides payment for the additional work required to remove and replace several newly installed side drains throughout the project due to discovering after final inspection that the stormwater runoff at these locations was greater than anticipated; and for the additional work required to salvage the riprap from Structures No. 47 & 49 due to the stormwater runoff pushing this material away from the structures.

<b>NEW ITEMS</b>			<b>\$25,265.57</b>
Removal of Structures & Obstructions	1.00 LS	\$6,000.00 /LS	\$6,000.00
Mobilization (Remobilization)	1.00 LS	\$12,417.77 /LS	\$12,417.77
Construction Miscellaneous (Salvage Riprap)	1.00 LSUM	\$6,847.80 /LSUM	\$6,847.80
<b>OVERRUN ITEMS</b>			<b>\$14,397.06</b>
28" x 20" Corr. Galv. Steel Pipe Arch	192.00 LF	\$39.63 /LF	\$7,608.96
35" x 24" Corr. Galv. Steel Pipe Arch	58.00 LF	\$49.45 /LF	\$2,868.10
28" x 20" Prefab. Culvert End Section, Arch	14.00 EA	\$230.00 /EA	\$3,220.00
35" x 24" Prefab. Culvert End Section, Arch	4.00 EA	\$175.00 /EA	\$700.00

CHANGE ORDER ACTIONS						
CHANGE ORDER NO.	(+ Overrun (-) Underrun Amount (\$)	%	Appropriated Amount (\$)	%	Supplemental Agreement Amount(\$)	%
1	\$0.00	0.00%	\$0.00	0.00%	\$0.00	0.00%
2	\$16,351.18	0.32%	\$16,351.18	0.32%	\$16,351.18	0.32%
3	\$39,662.63	0.78%	\$39,662.63	0.78%	\$25,265.57	0.50%
<b>TOTAL</b>	<b>\$56,013.81</b>	<b>1.10%</b>	<b>\$56,013.81</b>	<b>1.10%</b>	<b>\$41,616.75</b>	<b>0.82%</b>

## Change Orders with Cumulative Total of \$75,000 or Less (Information Only)

### November 02, 2020 Commission Meeting

<b>Project Number:</b>	CIRB-231C(040)RB	<b>CO APPROVAL:</b>	Sep. 28, 2020	<b>AGENDA ITEM</b>
		<b>Contract ID:</b>	200043	
<b>Contractor :</b>	KOSS CONSTRUCTION COMPANY & SUBSIDIARY	<b>Job Piece No.:</b>	28499(04)	<b>140J</b>
		<b>Highway No.:</b>	COUNTY ROADS	
<b>Designer:</b>	CED #2	<b>Div. / County.:</b>	01 / HASKELL	
<b>Description:</b>	GRADE, DRAIN, SURFACE, AND BRIDGE COUNTY ROADS (STAR RD/E1175/D1171): FROM SH-9, EXTEND NORTH ON STAR ROAD THEN EAST ON E1175 AND D1171 NEAR KEOTA. PROJECT LENGTH = 6.685 MILES			
<b>Contract Amount:</b>	\$7,518,071.77	<b>Funds Available:</b>	\$7,549,478.73	<b>Funds Paid(%) :</b> 25%
<b>Change Order</b>	1	<b>Original Time Used:</b>	45%	<b>Revised Time Used:</b> 45%

Change Order No. 1 approves a supplemental agreement and an additional appropriation in the amount of \$18,738.00.

Site Requirement: This change provides payment for the 8-inch polyvinyl chloride (PVC) pipe pay item required to encase a recently relocated 4-inch waterline due to it being partially exposed during recent heavy rainfall; and for the additional work required to utilize portable longitudinal barrier across Bridge A to protect the travelling public from damage caused by recent heavy rainfall.

NEW ITEMS	<b>\$18,738.00</b>		
Deliver Portable Longitudinal Barrier	125.00 LF	\$45.00 /LF	\$5,625.00
Relocation of Port. Longitudinal Barrier	175.00 LF	\$15.00 /LF	\$2,625.00
8" Polyvinyl Chloride (PVC) Pipe	160.00 LF	\$65.55 /LF	\$10,488.00

<b>CHANGE ORDER ACTIONS</b>						
CHANGE ORDER NO.	(+) Overrun (-) Underrun Amount (\$)	%	Appropriated Amount (\$)	%	Supplemental Agreement Amount(\$)	%
1	\$18,738.00	0.25%	\$18,738.00	0.25%	\$18,738.00	0.25%
3	\$12,668.96	0.17%	\$12,668.96	0.17%	\$12,668.96	0.17%
<b>TOTAL</b>	<b>\$31,406.96</b>	<b>0.42%</b>	<b>\$31,406.96</b>	<b>0.42%</b>	<b>\$31,406.96</b>	<b>0.42%</b>

## Change Orders with Cumulative Total of \$75,000 or Less (Information Only)

**November 02, 2020 Commission Meeting**

<b>Project Number:</b>	CIRB-231C(040)RB	<b>CO APPROVAL:</b>	Oct. 02, 2020	<b>AGENDA ITEM</b>
		<b>Contract ID:</b>	200043	<b>140K</b>
<b>Contractor :</b>	KOSS CONSTRUCTION COMPANY & SUBSIDIARY	<b>Job Piece No.:</b>	28499(04)	
		<b>Highway No.:</b>	COUNTY ROADS	
<b>Designer:</b>	CED #2	<b>Div. / County.:</b>	01 / HASKELL	
<b>Description:</b>	GRADE, DRAIN, SURFACE, AND BRIDGE COUNTY ROADS (STAR RD/E1175/D1171): FROM SH-9, EXTEND NORTH ON STAR ROAD THEN EAST ON E1175 AND D1171 NEAR KEOTA. PROJECT LENGTH = 6.685 MILES			
<b>Contract Amount:</b>	\$7,518,071.77	<b>Funds Available:</b>	\$7,549,478.73	<b>Funds Paid(%) :</b> 27%
<b>Change Order</b>	3	<b>Original Time Used:</b>	45%	<b>Revised Time Used:</b> 45%

Change Order No. 3 approves a supplemental agreement and an additional appropriation in the amount of \$12,668.96.

Site Requirement: This change provides payment for the additional work required to reconstruct the temporary detour around Bridge A due to it being damaged during a flash flood on May 15, 2020.

<b>NEW ITEM</b>	<b>\$12,668.96</b>
Construction Miscellaneous (Detour Repair)	1.00 LSUM      \$12,668.96 /LSUM      \$12,668.96

CHANGE ORDER ACTIONS						
CHANGE ORDER NO.	(+ Overrun -) Underrun Amount (\$)	%	Appropriated Amount (\$)	%	Supplemental Agreement Amount(\$)	%
1	\$18,738.00	0.25%	\$18,738.00	0.25%	\$18,738.00	0.25%
3	\$12,668.96	0.17%	\$12,668.96	0.17%	\$12,668.96	0.17%
<b>TOTAL</b>	<b>\$31,406.96</b>	<b>0.42%</b>	<b>\$31,406.96</b>	<b>0.42%</b>	<b>\$31,406.96</b>	<b>0.42%</b>



## Change Orders with Cumulative Total of \$75,000 or Less (Information Only)

**November 02, 2020 Commission Meeting**

<b>Project Number:</b>	STP-234D(046)CI	<b>CO APPROVAL:</b>	Oct. 05, 2020	<b>AGENDA ITEM</b>
		<b>Contract ID:</b>	190234	<b>140L</b>
<b>Contractor :</b>	OVERLAND CORPORATION	<b>Job Piece No.:</b>	29368(04)	
		<b>Highway No.:</b>	COUNTY ROAD (NS-301)	
<b>Designer:</b>	CEC CORPORATION	<b>Div. / County.:</b>	07 / JEFFERSON	
<b>Description:</b>	BRIDGE AND APPROACHES COUNTY ROAD (NS-301): OVER TRIBUTARY TO MUD CREEK, 4.6 MILES SOUTH OF THE SH-53 JUNCTION NEAR RINGLING. PROJECT LENGTH = 0.085 MILE			
<b>Contract Amount:</b>	\$734,799.20	<b>Funds Available:</b>	\$739,954.82	<b>Funds Paid(%) :</b> 99%
<b>Change Order</b>	1	<b>Original Time Used:</b>	81%	<b>Revised Time Used:</b> 81%

Change Order No. 1 approves an additional appropriation in the amount of \$5,155.62.

Site Requirement: This change provides payment for the final estimate due to the overrun of the riprap pay item. Additional quantities of this item were required to complete the project as specified due to an underestimation of the contract amount.

The cost of this change is partially offset by the underrun of other items of work.

<b>OVERRUN ITEM</b>	<b>\$5,625.50</b>
Type I-A Plain Riprap	112.51 TON      \$50.00 /TON      \$5,625.50

<b>CHANGE ORDER ACTIONS</b>						
CHANGE ORDER NO.	(+) Overrun (-) Underrun Amount (\$)	%	Appropriated Amount (\$)	%	Supplemental Agreement Amount(\$)	%
1	\$5,155.62	0.70%	\$5,155.62	0.70%	\$0.00	0.00%
<b>TOTAL</b>	<b>\$5,155.62</b>	<b>0.70%</b>	<b>\$5,155.62</b>	<b>0.70%</b>	<b>\$0.00</b>	<b>0.00%</b>

## Change Orders with Cumulative Total of \$75,000 or Less (Information Only)

**November 02, 2020 Commission Meeting**

<b>Project Number:</b>	CIRB-234C(045)RB	<b>CO APPROVAL:</b>	Sep. 24, 2020	<b>AGENDA ITEM</b>	
		<b>Contract ID:</b>	190142	<b>140M</b>	
<b>Contractor :</b>	OVERLAND CORPORATION	<b>Job Piece No.:</b>	29914(04)		
		<b>Highway No.:</b>	COUNTY ROAD (NOBLE W		
<b>Designer:</b>	CEC CORPORATION	<b>Div. / County.:</b>	07 / JEFFERSON		
<b>Description:</b>	GRADE, DRAIN, SURFACE, AND BRIDGE COUNTY ROAD (NOBLE WRAY II ROAD): FROM 4.6 MILES WEST OF THE US-81 JUNCTION, EXTEND NORTH NEAR RYAN. PROJECT LENGTH = 5.062 MILES				
<b>Contract Amount:</b>	\$5,986,413.52	<b>Funds Available:</b>	\$6,041,045.93	<b>Funds Paid(%) :</b>	85%
<b>Change Order</b>	2	<b>Original Time Used:</b>	91%	<b>Revised Time Used:</b>	91%

Change Order No. 2 approves a supplemental agreement and an additional appropriation in the amount of \$54,632.41.

Site Requirement: This change provides payment for the additional work required to install guardrail across Bridge Box A due to a request made by the County Commissioner.

NEW ITEMS	\$54,632.41		
Construction Miscellaneous (Additional Mobilization)	1.00 EA	\$6,789.47 /EA	\$6,789.47
Guardrail Trail End Turndown (31")	4.00 EA	\$3,009.42 /EA	\$12,037.66
Beam Guardrail W-Beam Single	200.00 LF	\$179.03 /LF	\$35,805.28

CHANGE ORDER ACTIONS						
CHANGE ORDER NO.	(+) Overrun (-) Underrun Amount (\$)	%	Appropriated Amount (\$)	%	Supplemental Agreement Amount(\$)	%
1	\$0.00	0.00%	\$0.00	0.00%	\$0.00	0.00%
2	\$54,632.41	0.91%	\$54,632.41	0.91%	\$54,632.41	0.91%
<b>TOTAL</b>	<b>\$54,632.41</b>	<b>0.91%</b>	<b>\$54,632.41</b>	<b>0.91%</b>	<b>\$54,632.41</b>	<b>0.91%</b>

## Change Orders with Cumulative Total of \$75,000 or Less (Information Only)

### November 02, 2020 Commission Meeting

<b>Project Number:</b>	STP-240N(079)PM		<b>CO APPROVAL:</b>	Oct. 05, 2020	<b>AGENDA ITEM</b>  140N
			<b>Contract ID:</b>	200228	
<b>Contractor :</b>	ROBINSON CONSTRUCTION, LLC		<b>Job Piece No.:</b>	31289(04)	
			<b>Highway No.:</b>	US-271	
<b>Designer:</b>	OKLA. DEPT. OF TRANSPORTATION		<b>Div. / County.:</b>	02 / LEFLORE	
<b>Description:</b>	INTERSECTION MODIFICATION US-271: AT THE INTERSECTION OF SH-112, 0.5 MILES WEST OF THE ARKANSAS STATE LINE. PROJECT LENGTH = 0.422 MILE				
<b>Contract Amount:</b>	\$1,682,054.42	<b>Funds Available:</b>	\$1,702,454.42	<b>Funds Paid(%) :</b>	0%
<b>Change Order</b>	1	<b>Original Time Used:</b>	0%	<b>Revised Time Used:</b>	0%

Change Order No. 1 approves a supplemental agreement and an additional appropriation in the amount of \$20,400.00.

Engineering: This change provides payment for the sawing pavement pay item required to saw the edge of existing pavement before placing the new driving lane or shoulder next to it due to this item being inadvertently omitted from the plans.

<b>NEW ITEM</b>	<b>\$20,400.00</b>
Sawing Pavement	6,800.00 LF      \$3.00 /LF      \$20,400.00

CHANGE ORDER ACTIONS						
CHANGE ORDER NO.	(+) Overrun (-) Underrun Amount (\$)	%	Appropriated Amount (\$)	%	Supplemental Agreement Amount(\$)	%
1	\$20,400.00	1.21%	\$20,400.00	1.21%	\$20,400.00	1.21%
<b>TOTAL</b>	<b>\$20,400.00</b>	<b>1.21%</b>	<b>\$20,400.00</b>	<b>1.21%</b>	<b>\$20,400.00</b>	<b>1.21%</b>

## Change Orders with Cumulative Total of \$75,000 or Less (Information Only)

November 02, 2020 Commission Meeting

<b>Project Number:</b>	SSP-019N(136)PM		<b>CO APPROVAL:</b>	Oct. 01, 2020	<b>AGENDA ITEM</b>
			<b>Contract ID:</b>	200217	1400
<b>Contractor :</b>	TOM HUDSON PAVING, INC.		<b>Job Piece No.:</b>	27005(10)	
			<b>Highway No.:</b>	US-412	
<b>Designer:</b>	OKLA. DEPT. OF TRANSPORTATION		<b>Div. / County.:</b>	06 / MAJOR	
<b>Description:</b>	GRADE AND DRAIN US-412: FROM 1.7 MILES EAST OF THE WOODWARD COUNTY LINE, EXTEND EAST. PROJECT LENGTH = 0.060 MILE				
<b>Contract Amount:</b>	\$109,649.37	<b>Funds Available:</b>	\$155,245.98	<b>Funds Paid(%) :</b>	68%
<b>Change Order</b>	1	<b>Original Time Used:</b>	75%	<b>Revised Time Used:</b>	75%

Change Order No. 1 approves an additional appropriation in the amount of \$45,596.61.

Site Requirement: This change provides payment for the final estimate due to the overrun of the polyurethane injection pay item required to raise the profile of the roadway due to discovering during construction that there were more areas of settlement than anticipated.

The cost of this change is partially offset by the underrun of other items of work.

<b>OVERRUN ITEM</b>	<b>\$55,552.09</b>
Polyurethane Injection for Pavement	8,279.00 LB      \$6.71 /LB      \$55,552.09

CHANGE ORDER ACTIONS						
CHANGE ORDER NO.	(+ Overrun - Underrun Amount (\$)	%	Appropriated Amount (\$)	%	Supplemental Agreement Amount(\$)	%
1	\$45,596.61	41.58%	\$45,596.61	41.58%	\$0.00	0.00%
<b>TOTAL</b>	<b>\$45,596.61</b>	<b>41.58%</b>	<b>\$45,596.61</b>	<b>41.58%</b>	<b>\$0.00</b>	<b>0.00%</b>

## Change Orders with Cumulative Total of \$75,000 or Less (Information Only)

**November 02, 2020 Commission Meeting**

<b>Project Number:</b>	SSP-248F(051)PM		<b>CO APPROVAL:</b>	Sep. 29, 2020	<b>AGENDA ITEM</b>
			<b>Contract ID:</b>	200231	<b>140P</b>
<b>Contractor :</b>	B & B CONSTRUCTION SERVICE J.T., INC.		<b>Job Piece No.:</b>	23145(09)	
			<b>Highway No.:</b>	SH-199	
<b>Designer:</b>	OKLA. DEPT. OF TRANSPORTATION		<b>Div. / County.:</b>	02 / MARSHALL	
<b>Description:</b>	JOINT SEAL/REPAIR SH-199: OVER GLASSES CREEK, 2.1 MILES EAST OF THE US-377 JUNCTION NEAR MADILL. PROJECT LENGTH = 0.000 MILE				
<b>Contract Amount:</b>	\$219,024.81	<b>Funds Available:</b>	\$294,014.81	<b>Funds Paid(%) :</b>	57%
<b>Change Order</b>	1	<b>Original Time Used:</b>	120%	<b>Revised Time Used:</b>	120%

Change Order No. 1 approves a supplemental agreement and an additional appropriation in the amount of \$74,990.00.

Site Requirement: This change provides payment for the overrun of the Class C bridge deck repair pay item required to complete the project as specified due to discovering the existing bridge deck was more deteriorated than expected after the asphalt overlay was removed. This change imposes a unit price reduction for the Class C bridge deck repair pay item due to the significant overrun of this major item of work. This change extends the contract time twenty-one days to complete this additional work.

<b>NEW ITEM</b>			<b>-\$3,385.00</b>
Class C Bridge Deck Repair (Unit Price Reduction)	135.40 SY	-\$25.00 /SY	-\$3,385.00
<b>OVERRUN ITEM</b>			<b>\$78,375.00</b>
Class C Bridge Deck Repair	125.40 SY	\$625.00 /SY	\$78,375.00

<b>CHANGE ORDER ACTIONS</b>						
CHANGE ORDER NO.	(+) Overrun (-) Underrun Amount (\$)	%	Appropriated Amount (\$)	%	Supplemental Agreement Amount(\$)	%
1	\$74,990.00	34.24%	\$74,990.00	34.24%	\$0.00	0.00%
2	\$47,951.66	21.89%	\$47,951.66	21.89%	\$0.00	0.00%
<b>TOTAL</b>	<b>\$122,941.66</b>	<b>56.13%</b>	<b>\$122,941.66</b>	<b>56.13%</b>	<b>\$0.00</b>	<b>0.00%</b>

## Change Orders with Cumulative Total of \$75,000 or Less (Information Only)

November 02, 2020 Commission Meeting

<b>Project Number:</b>	CIRB-251C(095)RB	<b>CO APPROVAL:</b>	Sep. 28, 2020	<b>AGENDA ITEM</b>
		<b>Contract ID:</b>	190119	140Q
<b>Contractor :</b>	H & H BRIDGE COMPANY	<b>Job Piece No.:</b>	29383(04)	
		<b>Highway No.:</b>	COUNTY ROAD	
<b>Designer:</b>	CRAFTON, TULL & ASSOCIATES, INC.	<b>Div. / County.:</b>	01 / MUSKOGEE	
<b>Description:</b>	BRIDGE AND APPROACHES COUNTY ROAD (EW-082/DUNCAN ROAD): OVER CONCHARTY CREEK, 4.4 MILES WEST OF THE US-64 JUNCTION NEAR HASKELL. PROJECT LENGTH = 0.269 MILE			
<b>Contract Amount:</b>	\$1,234,254.65	<b>Funds Available:</b>	\$1,284,430.74	<b>Funds Paid(%) :</b> 68%
<b>Change Order</b>	3	<b>Original Time Used:</b>	108%	<b>Revised Time Used:</b> 89%

Change Order No. 3 approves an additional appropriation in the amount of \$10,612.69.

Engineering: This change provides payment for the additional work required construct the driveway at Station 4+35 Lt. longer than planned due to the proposed grade being too steep. This change extends the contract time four days to complete this additional work.

OVERRUN ITEMS	\$10,612.69		
Unclassified Borrow	1,062.44 CY	\$7.25 /CY	\$7,702.69
Traffic Bound Surface Course Type E	14.00 TON	\$65.00 /TON	\$910.00
24" Corr. Galv. Steel Pipe	40.00 LF	\$50.00 /LF	\$2,000.00

CHANGE ORDER ACTIONS						
CHANGE ORDER NO.	(+ Overrun - ) Underrun Amount (\$)	%	Appropriated Amount (\$)	%	Supplemental Agreement Amount(\$)	%
1	\$0.00	0.00%	\$0.00	0.00%	\$0.00	0.00%
2	\$39,563.40	3.21%	\$39,563.40	3.21%	\$39,563.40	3.21%
3	\$10,612.69	0.86%	\$10,612.69	0.86%	\$0.00	0.00%
<b>TOTAL</b>	<b>\$50,176.09</b>	<b>4.07%</b>	<b>\$50,176.09</b>	<b>4.07%</b>	<b>\$39,563.40</b>	<b>3.21%</b>

## Change Orders with Cumulative Total of \$75,000 or Less (Information Only)

November 02, 2020 Commission Meeting

<b>Project Number:</b>	ACHSIPG-254C(039)AD / TAP-254D(038)TP		<b>CO APPROVAL:</b>	Sep. 30, 2020	<b>AGENDA ITEM</b>  140R
			<b>Contract ID:</b>	180138	
<b>Contractor :</b>	C3 CONSTRUCTION, INC.		<b>Job Piece No.:</b>	32966(04)	
			<b>Highway No.:</b>	SH-62	
<b>Designer:</b>	R.L. SHEARS COMPANY		<b>Div. / County.:</b>	03 / OKFUSKEE	
<b>Description:</b>	PEDESTRIAN IMPROVEMENTS (SIDEWALK) SH-62 (9TH STREET)/MAIN STREET: FROM 3.1 MI E OF THE LINCOLN C/L, EXTEND E ON SH-62/9TH ST THEN N ON MAIN ST IN PADEN.				
<b>Contract Amount:</b>	\$954,264.68	<b>Funds Available:</b>	\$960,494.02	<b>Funds Paid(%) :</b>	100%
<b>Change Order</b>	6	<b>Original Time Used:</b>	119%	<b>Revised Time Used:</b>	97%

Change Order No. 6 approves a supplemental agreement resulting in no additional cost to the Department.

Engineering: This change documents the utilization of 2-1/4" square tube posts in lieu of 2-1/2" square tube posts due to an administrative error which inadvertently added the wrong pay item on Change Order No. 1.

<b>NEW ITEMS</b>			<b>\$5,072.00</b>
2 1/4" Square Tube Post - JP#32966(04)	250.00 LF	\$12.68 /LF	\$3,170.00
2 1/4" Square Tube Post - JP#33018(04)	150.00 LF	\$12.68 /LF	\$1,902.00
<b>UNDERRUN OF PREVIOUSLY ESTABLISHED C/O ITEMS</b>			<b>-\$5,072.00</b>
2 1/2" Square Tube Post - JP#32966(04)	-250.00 LF	\$12.68 /LF	-\$3,170.00
2 1/2" Square Tube Post - JP#33018(04)	-150.00 LF	\$12.68 /LF	-\$1,902.00

CHANGE ORDER ACTIONS						
CHANGE ORDER NO.	(+) Overrun (-) Underrun Amount (\$)	%	Appropriated Amount (\$)	%	Supplemental Agreement Amount(\$)	%
1	\$0.00	0.00%	\$0.00	0.00%	\$0.00	0.00%
2	-\$7,022.32	-0.74%	\$0.00	0.00%	\$0.00	0.00%
3	\$440.00	0.05%	\$440.00	0.05%	\$440.00	0.05%
4	\$4,215.87	0.44%	\$4,215.87	0.44%	\$3,676.16	0.39%
5	\$1,573.47	0.16%	\$1,573.47	0.16%	\$0.00	0.00%
6	\$0.00	0.00%	\$0.00	0.00%	\$0.00	0.00%
<b>TOTAL</b>	<b>-\$792.98</b>	<b>-0.08%</b>	<b>\$6,229.34</b>	<b>0.65%</b>	<b>\$4,116.16</b>	<b>0.43%</b>

## Change Orders with Cumulative Total of \$75,000 or Less (Information Only)

November 02, 2020 Commission Meeting

<b>Project Number:</b>	SBR-255N(517)SB		<b>CO APPROVAL:</b>	Oct. 05, 2020	<b>AGENDA ITEM</b>  140S
			<b>Contract ID:</b>	200185	
<b>Contractor :</b>	FRONTIER BRIDGE, INC.		<b>Job Piece No.:</b>	27107(04)	
			<b>Highway No.:</b>	SH-77H	
<b>Designer:</b>	EST		<b>Div. / County.:</b>	04 / OKLAHOMA	
<b>Description:</b>	BRIDGE REHABILITATION SH-77H (SOONER ROAD): OVER I-240, 4.0 MILES EAST OF THE I-35 INTERCHANGE IN OKLAHOMA CITY. PROJECT LENGTH = 0.131 MILE				
<b>Contract Amount:</b>	\$3,664,145.19	<b>Funds Available:</b>	\$3,701,237.59	<b>Funds Paid(%) :</b>	31%
<b>Change Order</b>	2	<b>Original Time Used:</b>	11%	<b>Revised Time Used:</b>	11%

Change Order No. 2 approves a supplemental agreement resulting in no additional cost to the contract.

Site Requirement: This change provides for the utilization of subgrade method B in lieu of stabilized subgrade required to stabilize the roadway base due to site conditions encountered during construction. This item of work includes the placement of screenings and separator fabric as well as cost for undercuts made due to wet soil.

<b>NEW ITEM</b>			<b>\$12,318.80</b>
Subgrade Method B	920.00 SY	\$13.39 /SY	\$12,318.80
<b>UNDERRUN ITEM</b>			<b>-\$12,318.80</b>
Stabilized Subgrade	-920.00 SY	\$13.39 /SY	-\$12,318.80

CHANGE ORDER ACTIONS						
CHANGE ORDER NO.	(+ Overrun -) Underrun Amount (\$)	%	Appropriated Amount (\$)	%	Supplemental Agreement Amount(\$)	%
1	\$37,092.40	1.01%	\$37,092.40	1.01%	\$37,092.40	1.01%
2	\$0.00	0.00%	\$0.00	0.00%	\$0.00	0.00%
<b>TOTAL</b>	<b>\$37,092.40</b>	<b>1.01%</b>	<b>\$37,092.40</b>	<b>1.01%</b>	<b>\$37,092.40</b>	<b>1.01%</b>



## Change Orders with Cumulative Total of \$75,000 or Less (Information Only)

**November 02, 2020 Commission Meeting**

<b>Project Number:</b>	SSP-158B(119)PM		<b>CO APPROVAL:</b>	Oct. 07, 2020	<b>AGENDA ITEM</b>
			<b>Contract ID:</b>	180297	
<b>Contractor :</b>	RRY SERVICES LLC		<b>Job Piece No.:</b>	24273(04)	<b>140T</b>
			<b>Highway No.:</b>	US-60	
<b>Designer:</b>	BENHAM DESIGN, LLC.		<b>Div. / County.:</b>	08 / OTTAWA	
<b>Description:</b>	BRIDGE AND APPROACHES US-60: OVER HORSE CREEK, 1.7 MILES SOUTHWEST OF THE US-59 JUNCTION IN THE CITY OF AFTON. PROJECT LENGTH = 0.139 MILE				
<b>Contract Amount:</b>	\$3,769,758.16	<b>Funds Available:</b>	\$3,776,453.16	<b>Funds Paid(%) :</b>	88%
<b>Change Order</b>	1	<b>Original Time Used:</b>	114%	<b>Revised Time Used:</b>	114%

Change Order No. 1 approves a supplemental agreement and an additional appropriation in the amount of \$6,695.00.

Site Requirement: This change provides payment for the additional work required to repair and extend an existing side drain due to discovering during construction it was beginning to erode and undercut the roadway. This change extends the contract time thirty-eight days due to delays caused by the COVID-19 pandemic. This change also extends the milestone time seventy days (thirty-two days due to delays caused by the COVID-19 pandemic, fifteen days due to the Department reviewing potential plan errors and site conditions, fourteen days due to plan errors related to the abutment and diaphragm steel, and nine days due to excessive flooding which impacted drilled shaft construction).

NEW ITEMS				\$6,695.00
18" Corr. Galv. Steel Pipe	80.00 LF	\$49.00 /LF		\$3,920.00
Type AA4 Culvert End Treatment	1.00 EA	\$2,775.00 /EA		\$2,775.00

CHANGE ORDER ACTIONS						
CHANGE ORDER NO.	(+) Overrun (-) Underrun Amount (\$)	%	Appropriated Amount (\$)	%	Supplemental Agreement Amount(\$)	%
1	\$6,695.00	0.18%	\$6,695.00	0.18%	\$6,695.00	0.18%
<b>TOTAL</b>	<b>\$6,695.00</b>	<b>0.18%</b>	<b>\$6,695.00</b>	<b>0.18%</b>	<b>\$6,695.00</b>	<b>0.18%</b>

## Change Orders with Cumulative Total of \$75,000 or Less (Information Only)

### November 02, 2020 Commission Meeting

<b>Project Number:</b>	SSP-261N(092)PM	<b>CO APPROVAL:</b>	Oct. 02, 2020	<b>AGENDA ITEM</b>	
		<b>Contract ID:</b>	200208		
<b>Contractor :</b>	DUIT CONSTRUCTION COMPANY, INC.	<b>Job Piece No.:</b>	34341(04)	140U	
		<b>Highway No.:</b>	US-69		
<b>Designer:</b>	CEC CORPORATION	<b>Div. / County.:</b>	02 / PITTSBURG		
<b>Description:</b>	PAVEMENT REHABILITATION (A.C. AND P.C.) AND CABLE BARRIER US-69: FROM 0.8 MILES NORTH OF THE SH-63 JUNCTION, EXTEND NORTH NEAR KIOWA. PROJECT LENGTH = 5.731 MILES				
<b>Contract Amount:</b>	\$10,591,877.73	<b>Funds Available:</b>	\$10,613,077.73	<b>Funds Paid(%) :</b>	0%
<b>Change Order</b>	1	<b>Original Time Used:</b>	0%	<b>Revised Time Used:</b>	0%

Change Order No. 1 approves a supplemental agreement and an additional appropriation in the amount of \$21,200.00.

Site Requirement: This change provides payment for the tube channelizer pay item required to provide delineation to the travelling public in lieu of channelizer cones as planned due to width limitations in the turn lanes; and for the arrow display and multi-polymer traffic stripe pay items required to complete the project as planned due to these items being inadvertently omitted from the plans.

NEW ITEMS				\$21,200.00
Arrow Display (Type C)	360.00 SD	\$6.60 /SD		\$2,376.00
Tube Channelizers	43,680.00 SD	\$0.30 /SD		\$13,104.00
Traffic Stripe (Multi-Poly.)(Arrows)	26.00 EA	\$220.00 /EA		\$5,720.00

CHANGE ORDER ACTIONS						
CHANGE ORDER NO.	(+) Overrun (-) Underrun Amount (\$)	%	Appropriated Amount (\$)	%	Supplemental Agreement Amount(\$)	%
1	\$21,200.00	0.20%	\$21,200.00	0.20%	\$21,200.00	0.20%
<b>TOTAL</b>	<b>\$21,200.00</b>	<b>0.20%</b>	<b>\$21,200.00</b>	<b>0.20%</b>	<b>\$21,200.00</b>	<b>0.20%</b>

## Change Orders with Cumulative Total of \$75,000 or Less (Information Only)

**November 02, 2020 Commission Meeting**

<b>Project Number:</b>	NHPP1-4400(058)PM	<b>CO APPROVAL:</b>	Oct. 06, 2020	<b>AGENDA ITEM</b>
		<b>Contract ID:</b>	190331	
<b>Contractor :</b>	SHERWOOD CONSTRUCTION CO., INC.	<b>Job Piece No.:</b>	29693(04)	<b>140V</b>
		<b>Highway No.:</b>	I-44	
<b>Designer:</b>	OLSSON ASSOCIATES	<b>Div. / County.:</b>	08 / TULSA	
<b>Description:</b>	BRIDGE AND APPROACHES I-44: OVER 33RD WEST AVENUE, 0.5 MILES EAST OF THE I-244 INTERCHANGE IN TULSA. PROJECT LENGTH = 0.312 MILE			
<b>Contract Amount:</b>	\$10,884,214.61	<b>Funds Available:</b>	\$10,931,493.41	<b>Funds Paid(%) :</b> 70%
<b>Change Order</b>	4	<b>Original Time Used:</b>	56%	<b>Revised Time Used:</b> 56%

Change Order No. 4 approves a supplemental agreement and an additional appropriation in the amount of \$6,187.50.

Site Requirement: This change provides payment for the replacement of existing sand filled impact attenuators located on the project due to many of them being damaged and unrepairable.

<b>NEW ITEM</b>			<b>\$6,187.50</b>
Sand Filled Impact Atten. Module	15.00 EA	\$412.50 /EA	<b>\$6,187.50</b>

<b>CHANGE ORDER ACTIONS</b>						
CHANGE ORDER NO.	(+) Overrun (-) Underrun Amount (\$)	%	Appropriated Amount (\$)	%	Supplemental Agreement Amount(\$)	%
1	\$0.00	0.00%	\$0.00	0.00%	\$0.00	0.00%
2	\$5,445.00	0.05%	\$5,445.00	0.05%	\$5,445.00	0.05%
3	\$35,646.30	0.33%	\$35,646.30	0.33%	\$35,646.30	0.33%
4	\$6,187.50	0.06%	\$6,187.50	0.06%	\$6,187.50	0.06%
<b>TOTAL</b>	<b>\$47,278.80</b>	<b>0.43%</b>	<b>\$47,278.80</b>	<b>0.43%</b>	<b>\$47,278.80</b>	<b>0.43%</b>

**Change Orders with Cumulative Total Greater than \$75,000**

**NOVEMBER 02, 2020 Commission Meeting**

ITEM	COUNTY	PROJECT NUMBER	FED OVER	CONTRACT	JPN	CHANGE ORDER	UNDER/ OVER RUN
141A	CADDO	STP-208C(052)SS	<input type="checkbox"/>	170218	2409204	004	\$11,883.08
141B	CHOCTAW	STP-212C(043)CI	<input type="checkbox"/>	180322	2996504	003	\$31,862.54
141C	CIMARRON	NHPP-034N(001)PM	<input type="checkbox"/>	190383	2094104	003	\$7,499.25
141D	CIMARRON	NHPP-034N(001)PM	<input type="checkbox"/>	190383	2094104	005	\$48,000.00
141E	GARFIELD	STP-224B(058)SS / STP-224B(059)SS	<input type="checkbox"/>	190350	2798104	002	\$901,937.24
141F	LOGAN	STP-242C(055)PM	<input type="checkbox"/>	170125	2710304	013	\$28,972.74
141G	LOVE	CIRB-243C(031)RB	<input type="checkbox"/>	190214	3141104	003	\$24,375.00
141H	MARSHALL	SSP-248F(051)PM	<input type="checkbox"/>	200231	2314509	002	\$47,951.66
141I	MAYES	STP-249C(053)CI	<input type="checkbox"/>	190364	3116104	003	\$21,549.14
141J	MCCLAIN	NHPPI-3500-(077)PM	<input type="checkbox"/>	200046	2973404	003	\$99,750.63
141K	OKFUSKEE	STP-254C(040)SS	<input type="checkbox"/>	180019	2796304	005	\$6,312.37
141L	OKLAHOMA	OKC-XTWN(006)SS / OKC-XTWN(048)SS	<input type="checkbox"/>	150026	1742860	027	\$41,571.69
141M	OKLAHOMA	ACNHPPPI-0040-5(382) / ACNHPPPI-4000-(047)	<input type="checkbox"/>	170289	2032404	008	\$930,167.50
141N	OKLAHOMA	TAP-255C(490)TP / NHPP-255N(489)EH	<input type="checkbox"/>	190323	3298404	002	\$21,396.42
141O	OKLAHOMA	STPG-255F(483)AG	<input type="checkbox"/>	190325	3334404	003	\$105,500.05
141P	OKMULGEE	ACSTP-156C(136)SS	<input type="checkbox"/>	160255	2436904	005	\$146,687.36
141Q	TEXAS	NHPP-008N(059)FP / NHPP-008N(090)FP	<input type="checkbox"/>	190097	2094704	003	-\$150,487.56
141R	TILLMAN	STP-271C(067)PM	<input type="checkbox"/>	200035	2951404	002	\$90,000.00
141S	TULSA	STP-172B(400)IG	<input type="checkbox"/>	200126	2521204	002	\$653,718.12
141T	TULSA	STP-272B(278)CI	<input type="checkbox"/>	200085	3070304	003	\$34,366.90

## Change Orders with Cumulative Total Greater than \$75,000

November 02, 2020 Commission Meeting

<b>Project Number:</b>	STP-208C(052)SS	<b>Contract ID:</b>	170218	<b>AGENDA ITEM</b>
<b>Contractor :</b>	THE CUMMINS CONSTRUCTION CO., INC.	<b>Job Piece No.:</b>	24092(04)	141A
<b>Designer:</b>	OKLA. DEPT. OF TRANSPORTATION	<b>Highway No.:</b>	SH-58	
<b>Description:</b>	WIDEN AND RESURFACE SH-58: FROM SH-152, EXTEND NORTH NEAR EAKLEY. PROJECT LENGTH = 5.890 MILES			
<b>Contract Amount:</b>	\$5,338,036.82	<b>Funds Available:</b>	\$5,946,779.53	<b>Funds Paid(%) :</b> 96%
<b>Change Order</b>	4	<b>Original Time Used:</b>	134%	<b>Revised Time Used:</b> 100%

Request approval of Change Order No. 4 for a supplemental agreement and an additional appropriation in the amount of \$11,883.08.

Engineering: This change provides payment for the removal of asphalt pavement pay item required to complete the project as planned due to this pay item being inadvertently omitted from the plans.

**NEW ITEM**

\$11,883.08

Removal of Asphalt Pavement 5,258.00 SY \$2.26 /SY \$11,883.08

CHANGE ORDER ACTIONS						
CHANGE ORDER NO.	(+) Overrun (-) Underrun Amount (\$)	%	Appropriated Amount (\$)	%	Supplemental Agreement Amount(\$)	%
1	\$57,000.00	1.07%	\$57,000.00	1.07%	\$57,000.00	1.07%
2	\$98,670.00	1.85%	\$98,670.00	1.85%	\$98,670.00	1.85%
3	\$453,072.71	8.49%	\$453,072.71	8.49%	\$60,631.19	1.14%
4	\$11,883.08	0.22%	\$11,883.08	0.22%	\$11,883.08	0.22%
<b>TOTAL</b>	<b>\$620,625.79</b>	<b>11.63%</b>	<b>\$620,625.79</b>	<b>11.63%</b>	<b>\$228,184.27</b>	<b>4.27%</b>

## Change Orders with Cumulative Total Greater than \$75,000

### November 02, 2020 Commission Meeting

<b>Project Number:</b>	STP-212C(043)CI		<b>Contract ID:</b>	180322	<b>AGENDA ITEM</b>  141B
<b>Contractor :</b>	THE CUMMINS CONSTRUCTION CO., INC.		<b>Job Piece No.:</b>	29965(04)	
<b>Designer:</b>	CED #3		<b>Highway No.:</b>	CRYSTAL ROAD/NS-401	
<b>Description:</b>	RESURFACE (ASPHALT) COUNTY ROAD (CRYSTAL ROAD/NS-401): FROM 2.5 MILES NORTH OF THE US-70 JUNCTION, EXTEND NORTH NEAR BOSWELL. PROJECT LENGTH = 2.500 MILES				
<b>Contract Amount:</b>	\$698,934.20	<b>Funds Available:</b>	\$763,012.62	<b>Funds Paid(%) :</b>	99%
<b>Change Order</b>	3	<b>Original Time Used:</b>	73%	<b>Revised Time Used:</b>	73%

Request approval of Change Order No. 3 for a supplemental agreement and an additional appropriation in the amount of \$31,862.54.

Site Requirement: This change provides payment for the additional work required to remobilize and repair a section of asphalt pavement after achieving substantial completion due to a subgrade failure.

<b>NEW ITEMS</b>				<b>\$28,800.44</b>
Aggregate Base Type A	44.00 CY	\$43.86 /CY		\$1,929.84
Geogrid Reinforcement	267.00 SY	\$2.13 /SY		\$568.71
Mobilization (Remobilization)	1.00 LSUM	\$24,205.90 /LSUM		\$24,205.90
Construction Traffic Control (Additional)	1.00 LSUM	\$1,500.00 /LSUM		\$1,500.00
Removal of Asphalt Pavement	133.33 SY	\$4.47 /SY		\$595.99
<b>OVERRUN ITEMS</b>				<b>\$3,062.10</b>
NT Tack Material	10.00 GAL	\$3.35 /GAL		\$33.50
Superpave, Type S4 (PG 64-22 OK)	38.00 TON	\$79.70 /TON		\$3,028.60

<b>CHANGE ORDER ACTIONS</b>						
CHANGE ORDER NO.	(+) Overrun (-) Underrun Amount (\$)	%	Appropriated Amount (\$)	%	Supplemental Agreement Amount(\$)	%
1	\$9,000.00	1.29%	\$9,000.00	1.29%	\$9,000.00	1.29%
2	\$55,078.42	7.88%	\$55,078.42	7.88%	\$0.00	0.00%
3	\$31,862.54	4.56%	\$31,862.54	4.56%	\$28,800.44	4.12%
<b>TOTAL</b>	<b>\$95,940.96</b>	<b>13.73%</b>	<b>\$95,940.96</b>	<b>13.73%</b>	<b>\$37,800.44</b>	<b>5.41%</b>

## Change Orders with Cumulative Total Greater than \$75,000

November 02, 2020 Commission Meeting

<b>Project Number:</b>	NHPP-034N(001)PM		<b>Contract ID:</b>	190383	<b>AGENDA ITEM</b>  141C
<b>Contractor :</b>	INTERSTATE HIGHWAY CONSTRUCTION, INC.		<b>Job Piece No.:</b>	20941(04)	
<b>Designer:</b>	GUY ENGINEERING SERVICES, INC.		<b>Highway No.:</b>	MULTIPLE LOCATIONS	
<b>Description:</b>	GRADE, DRAIN, AND SURFACE US-64 (CIMARRON AVE)/US-385/CITY STREET (MAIN ST): FROM 0.3 MILES SOUTH OF THE SH-325 JCT, EXTEND NORTH IN BOISE CITY. PROJECT LENGTH = 0.994 MILE				
<b>Contract Amount:</b>	\$10,793,088.44	<b>Funds Available:</b>	\$11,120,532.89	<b>Funds Paid(%) :</b>	69%
<b>Change Order</b>	3	<b>Original Time Used:</b>	47%	<b>Revised Time Used:</b>	45%

Request approval of Change Order No. 3 for a supplemental agreement and an additional appropriation in the amount of \$7,499.25.

Site Requirement: This change provides payment for the removal of light pole pay item required to remove the foundations of three newly constructed light poles due to their planned locations conflicting with new driveways and businesses constructed after the plans were finalized.

<b>NEW ITEM</b>	<b>\$7,499.25</b>
Removal of Light Pole	3.00 EA      \$2,499.75 /EA      \$7,499.25

CHANGE ORDER ACTIONS						
CHANGE ORDER NO.	(+) Overrun (-) Underrun Amount (\$)	%	Appropriated Amount (\$)	%	Supplemental Agreement Amount(\$)	%
1	\$231,444.45	2.14%	\$231,444.45	2.14%	\$231,444.45	2.14%
2	\$96,000.00	0.89%	\$96,000.00	0.89%	\$0.00	0.00%
3	\$7,499.25	0.07%	\$7,499.25	0.07%	\$7,499.25	0.07%
4	\$0.00	0.00%	\$0.00	0.00%	\$0.00	0.00%
5	\$48,000.00	0.44%	\$48,000.00	0.44%	\$0.00	0.00%
<b>TOTAL</b>	<b>\$382,943.70</b>	<b>3.55%</b>	<b>\$382,943.70</b>	<b>3.55%</b>	<b>\$238,943.70</b>	<b>2.21%</b>

## Change Orders with Cumulative Total Greater than \$75,000

November 02, 2020 Commission Meeting

<b>Project Number:</b>	NHPP-034N(001)PM	<b>Contract ID:</b>	190383	<b>AGENDA ITEM</b>  141D	
<b>Contractor :</b>	INTERSTATE HIGHWAY CONSTRUCTION, INC.	<b>Job Piece No.:</b>	20941(04)		
<b>Designer:</b>	GUY ENGINEERING SERVICES, INC.	<b>Highway No.:</b>	MULTIPLE LOCATIONS		
<b>Description:</b>	GRADE, DRAIN, AND SURFACE US-64 (CIMARRON AVE)/US-385/CITY STREET (MAIN ST): FROM 0.3 MILES SOUTH OF THE SH-325 JCT, EXTEND NORTH IN BOISE CITY. PROJECT LENGTH = 0.994 MILE				
<b>Contract Amount:</b>	\$10,793,088.44	<b>Funds Available:</b>	\$11,120,532.89	<b>Funds Paid(%) :</b>	69%
<b>Change Order</b>	5	<b>Original Time Used:</b>	47%	<b>Revised Time Used:</b>	45%

Request approval of Change Order No. 5 for an additional appropriation in the amount of \$48,000.00.

Site Requirement: This change provides payment for the early completion incentive earned by the contractor for achieving substantial completion on Milestone No. 2 prior to the time allowed in the contract.

**NEW ITEM**

\$48,000.00

Incentive for Early Completion (Milestone No. 2)

12.00 DAY

\$4,000.00 /DAY

\$48,000.00

CHANGE ORDER ACTIONS						
CHANGE ORDER NO.	(+) Overrun (-) Underrun Amount (\$)	%	Appropriated Amount (\$)	%	Supplemental Agreement Amount(\$)	%
1	\$231,444.45	2.14%	\$231,444.45	2.14%	\$231,444.45	2.14%
2	\$96,000.00	0.89%	\$96,000.00	0.89%	\$0.00	0.00%
3	\$7,499.25	0.07%	\$7,499.25	0.07%	\$7,499.25	0.07%
4	\$0.00	0.00%	\$0.00	0.00%	\$0.00	0.00%
5	\$48,000.00	0.44%	\$48,000.00	0.44%	\$0.00	0.00%
<b>TOTAL</b>	<b>\$382,943.70</b>	<b>3.55%</b>	<b>\$382,943.70</b>	<b>3.55%</b>	<b>\$238,943.70</b>	<b>2.21%</b>



## Change Orders with Cumulative Total Greater than \$75,000

### November 02, 2020 Commission Meeting

<b>Project Number:</b>	STP-224B(058)SS / STP-224B(059)SS		<b>Contract ID:</b>	190350	<b>AGENDA ITEM</b>  141E
<b>Contractor :</b>	THE CUMMINS CONSTRUCTION CO., INC.		<b>Job Piece No.:</b>	27981(04)	
<b>Designer:</b>	OKLA. DEPT. OF TRANSPORTATION		<b>Highway No.:</b>	US-60	
<b>Description:</b>	GRADE, DRAIN, AND SURFACE US-60: FROM SH-45. EXTEND NORTH NEAR ENID. PROJECT LENGTH = 9.000 MILES				
<b>Contract Amount:</b>	\$17,498,455.93	<b>Funds Available:</b>	\$17,498,455.93	<b>Funds Paid(%) :</b>	21%
<b>Change Order</b>	2	<b>Original Time Used:</b>	40%	<b>Revised Time Used:</b>	40%

Request approval of Change Order No. 2 for an additional appropriation in the amount of \$901,937.24.

Site Requirement: This change provides payment for the overrun of the concrete patching pay items required to patch the existing concrete pavement due to discovering during construction that the existing roadway was more deteriorated than planned. This change extends the contract time sixty-five days due to the number of panels needing patched increasing from four hundred to nine hundred and eighty-four.

<b>OVERRUN ITEMS</b>				<b>\$901,937.24</b>
Full Depth P.C. Concrete Patching (Placement Only)	6,260.00 SY	\$30.40 /SY		\$190,304.00
P.C. Concrete for Pavement	1,391.11 CY	\$166.55 /CY		\$231,689.37
Removal of Concrete Pavement	6,260.00 SY	\$8.50 /SY		\$53,210.00
Full Depth P.C. Concrete Patching (Placement Only)	5,420.00 SY	\$30.40 /SY		\$164,768.00
P.C. Concrete for Pavement	1,204.44 CY	\$179.25 /CY		\$215,895.87
removal of concrete pavement	5,420.00 SY	\$8.50 /SY		\$46,070.00

<b>CHANGE ORDER ACTIONS</b>						
CHANGE ORDER NO.	(+) Overrun (-) Underrun Amount (\$)	%	Appropriated Amount (\$)	%	Supplemental Agreement Amount(\$)	%
1	\$0.00	0.00%	\$0.00	0.00%	\$0.00	0.00%
2	\$901,937.24	5.15%	\$901,937.24	5.15%	\$0.00	0.00%
<b>TOTAL</b>	<b>\$901,937.24</b>	<b>5.15%</b>	<b>\$901,937.24</b>	<b>5.15%</b>	<b>\$0.00</b>	<b>0.00%</b>

## Change Orders with Cumulative Total Greater than \$75,000

**November 02, 2020 Commission Meeting**

<b>Project Number:</b>	STP-242C(055)PM		<b>Contract ID:</b>	170125	<b>AGENDA ITEM</b>  141F
<b>Contractor :</b>	FRONTIER BRIDGE, INC. / BRIDGECO CONTRACTORS, INC.		<b>Job Piece No.:</b>	27103(04)	
<b>Designer:</b>	OKLA. DEPT. OF TRANSPORTATION		<b>Highway No.:</b>	US-77	
<b>Description:</b>	BRIDGE AND APPROACHES US-77: OVER THE CIMARRON RIVER, 2.7 MILES NORTH OF SH-33 NEAR GUTHRIE. PROJECT LENGTH = 0.610 MILE				
<b>Contract Amount:</b>	\$5,452,151.90	<b>Funds Available:</b>	\$5,918,693.85	<b>Funds Paid(%) :</b>	100%
<b>Change Order:</b>	13	<b>Original Time Used:</b>	124%	<b>Revised Time Used:</b>	99%

Request approval of Change Order No. 13 for an additional appropriation in the amount of \$28,972.74.

Engineering: This change provides payment for the overrun of the traffic bound surface course pay item required to complete the roadway shouldering operations as specified due to an error made when calculating the contract amount.

**OVERRUN ITEM**

\$28,972.74

Traffic Bound Surface Course Type E

799.91 TON

\$36.22 /TON

\$28,972.74

CHANGE ORDER ACTIONS						
CHANGE ORDER NO.	(+) Overrun (-) Underrun Amount (\$)	%	Appropriated Amount (\$)	%	Supplemental Agreement Amount(\$)	%
2	\$51,230.58	0.94%	\$51,230.58	0.94%	\$51,230.58	0.94%
3	\$79,879.42	1.47%	\$79,879.42	1.47%	\$79,879.42	1.47%
4	\$46,773.76	0.86%	\$46,773.76	0.86%	\$46,773.76	0.86%
5	\$20,662.89	0.38%	\$20,662.89	0.38%	\$20,662.89	0.38%
6	\$157,274.10	2.88%	\$157,274.10	2.88%	\$157,274.10	2.88%
7	\$1,757.40	0.03%	\$1,757.40	0.03%	\$0.00	0.00%
8	\$3,697.50	0.07%	\$3,697.50	0.07%	\$3,697.50	0.07%
9	\$0.00	0.00%	\$0.00	0.00%	\$0.00	0.00%
10	\$10,124.43	0.19%	\$10,124.43	0.19%	\$10,124.43	0.19%
11	\$95,141.87	1.75%	\$95,141.87	1.75%	\$19,563.47	0.36%
13	\$28,972.74	0.53%	\$28,972.74	0.53%	\$0.00	0.00%
<b>TOTAL</b>	<b>\$495,514.69</b>	<b>9.09%</b>	<b>\$495,514.69</b>	<b>9.09%</b>	<b>\$389,206.15</b>	<b>7.14%</b>

## Change Orders with Cumulative Total Greater than \$75,000

November 02, 2020 Commission Meeting

<b>Project Number:</b>	CIRB-243C(031)RB		<b>Contract ID:</b>	190214	<b>AGENDA ITEM</b>  141G
<b>Contractor :</b>	SILVER STAR CONSTRUCTION COMPANY, INC.		<b>Job Piece No.:</b>	31411(04)	
<b>Designer:</b>	EST	<b>Highway No.:</b>	COUNTY ROAD		
<b>Description:</b>	BRIDGE AND APPROACHES COUNTY ROAD (MERLE WOLFE ROAD): OVER TRIBUTARY TO BLUE LAKE, 3.0 MILES NORTH OF THE TEXAS STATE LINE NEAR THACKERVILLE. PROJECT LENGTH = 0.292 MILE				
<b>Contract Amount:</b>	\$1,424,000.00	<b>Funds Available:</b>	\$1,609,976.55	<b>Funds Paid(%) :</b>	72%
<b>Change Order</b>	3	<b>Original Time Used:</b>	70%	<b>Revised Time Used:</b>	65%

Request approval of Change Order No. 3 for an additional appropriation in the amount of \$24,375.00.

Engineering: This change provides payment for the overrun of the riprap pay item required to complete the project as specified due to the original quantity being calculated incorrectly.

<b>OVERRUN ITEM</b>			<b>\$24,375.00</b>
Type 1 Plain Riprap	375.00 TON	\$65.00 /TON	\$24,375.00

CHANGE ORDER ACTIONS						
CHANGE ORDER NO.	(+) Overrun (-) Underrun Amount (\$)	%	Appropriated Amount (\$)	%	Supplemental Agreement Amount(\$)	%
1	\$120,292.55	8.45%	\$120,292.55	8.45%	\$0.00	0.00%
2	\$65,684.00	4.61%	\$65,684.00	4.61%	\$65,684.00	4.61%
3	\$24,375.00	1.71%	\$24,375.00	1.71%	\$0.00	0.00%
<b>TOTAL</b>	<b>\$210,351.55</b>	<b>14.77%</b>	<b>\$210,351.55</b>	<b>14.77%</b>	<b>\$65,684.00</b>	<b>4.61%</b>

## Change Orders with Cumulative Total Greater than \$75,000

November 02, 2020 Commission Meeting

<b>Project Number:</b>	SSP-248F(051)PM		<b>Contract ID:</b>	200231	<b>AGENDA ITEM</b>  141H
<b>Contractor :</b>	B & B CONSTRUCTION SERVICE J.T., INC.		<b>Job Piece No.:</b>	23145(09)	
<b>Designer:</b>	OKLA. DEPT. OF TRANSPORTATION		<b>Highway No.:</b>	SH-199	
<b>Description:</b>	JOINT SEAL/REPAIR SH-199: OVER GLASSES CREEK, 2.1 MILES EAST OF THE US-377 JUNCTION NEAR MADILL. PROJECT LENGTH = 0.000 MILE				
<b>Contract Amount:</b>	\$219,024.81	<b>Funds Available:</b>	\$294,014.81	<b>Funds Paid(%) :</b>	74%
<b>Change Order</b>	2	<b>Original Time Used:</b>	170%	<b>Revised Time Used:</b>	170%

Request approval of Change Order No. 2 for a supplemental agreement and an additional appropriation in the amount of \$47,951.66.

Site Requirement: This change provides payment for the additional work required repair the bridge deck as specified due to discovering after removing the asphalt overlay that the concrete deck is more deteriorated than anticipated. This change imposes a unit price reduction for the Class C bridge deck repair pay item due to the significant overrun of this major item of work. This change documents the underrun of the Class B bridge deck repair pay item due to it not being needed on this project. This change extends the contract time fourteen days to complete the additional deck repair.

<b>NEW ITEM</b>			<u>-\$1,742.25</u>
Class C Bridge Deck Repair (Unit Price Reduction)	69.69 SY	-\$25.00 /SY	-\$1,742.25
<b>OVERRUN ITEMS</b>			<u>\$66,693.91</u>
Corrosion Inhibitor (Surface Applied)	69.34 SY	\$49.00 /SY	\$3,397.66
Construction Signs 6.26 SF to 15.99 SF	628.00 SD	\$9.00 /SD	\$5,652.00
Construction Signs 16.0 SF to 32.99 SF	390.00 SD	\$9.00 /SD	\$3,510.00
Channelizer Cones	1,615.00 SD	\$1.20 /SD	\$1,938.00
Class C Bridge Deck Repair	69.69 SY	\$625.00 /SY	\$43,556.25
Portable Traffic Signal System	35.00 SD	\$120.00 /SD	\$4,200.00
Port. Changeable Message Sign	120.00 SD	\$37.00 /SD	\$4,440.00
<b>UNDERRUN ITEM</b>			<u>-\$17,000.00</u>
Class B Bridge Deck Repair	-40.00 SY	\$425.00 /SY	-\$17,000.00

CHANGE ORDER ACTIONS						
CHANGE ORDER NO.	(+) Overrun (-) Underrun Amount (\$)	%	Appropriated Amount (\$)	%	Supplemental Agreement Amount(\$)	%
1	\$74,990.00	34.24%	\$74,990.00	34.24%	\$0.00	0.00%
2	\$47,951.66	21.89%	\$47,951.66	21.89%	\$0.00	0.00%
<b>TOTAL</b>	<b>\$122,941.66</b>	<b>56.13%</b>	<b>\$122,941.66</b>	<b>56.13%</b>	<b>\$0.00</b>	<b>0.00%</b>

## Change Orders with Cumulative Total Greater than \$75,000

**November 02, 2020 Commission Meeting**

<b>Project Number:</b>	STP-249C(053)CI	<b>Contract ID:</b>	190364	<b>AGENDA ITEM</b>
<b>Contractor :</b>	MANHATTAN ROAD & BRIDGE COMPANY	<b>Job Piece No.:</b>	31161(04)	<b>141I</b>
<b>Designer:</b>	KELLOGG ENGINEERING, INC.	<b>Highway No.:</b>	COUNTY ROAD (NS-435)	
<b>Description:</b>	RESURFACE (P. C. CONCRETE) AND BRIDGE AND APPROACHES COUNTY ROAD (NS-435): FROM 0.5 MILES SOUTH OF THE SH-28 JUNCTION, EXTEND SOUTH NEAR ADAIR. PROJECT LENGTH = 3.444 MILES			
<b>Contract Amount:</b>	\$3,560,000.00	<b>Funds Available:</b>	\$3,644,276.46	<b>Funds Paid(%) :</b> 95%
<b>Change Order</b>	3	<b>Original Time Used:</b>	113%	<b>Revised Time Used:</b> 111%

Request approval of Change Order No. 3 for a supplemental agreement and an additional appropriation in the amount of \$21,549.14.

Site Requirement: This change provides payment for the additional work required to remobilize and construct headwalls and wingwalls on the existing structure at Sta. 431+50 after achieving substantial completion on the project due to concerns the drop-offs at the edge of roadway over this structure are too steep.

<b>NEW ITEMS</b>			<b>\$21,549.14</b>
Class AA Concrete	16.20 CY	\$1,058.49 /CY	\$17,147.54
Reinforcing Steel	2,620.00 LB	\$1.68 /LB	\$4,401.60

CHANGE ORDER ACTIONS						
CHANGE ORDER NO.	(+) Overrun (-) Underrun Amount (\$)	%	Appropriated Amount (\$)	%	Supplemental Agreement Amount(\$)	%
1	\$15,244.50	0.43%	\$15,244.50	0.43%	\$0.00	0.00%
2	\$69,031.96	1.94%	\$69,031.96	1.94%	\$16,131.96	0.45%
3	\$21,549.14	0.61%	\$21,549.14	0.61%	\$21,549.14	0.61%
<b>TOTAL</b>	<b>\$105,825.60</b>	<b>2.97%</b>	<b>\$105,825.60</b>	<b>2.97%</b>	<b>\$37,681.10</b>	<b>1.06%</b>

## Change Orders with Cumulative Total Greater than \$75,000

November 02, 2020 Commission Meeting

<b>Project Number:</b>	NHPPI-3500-(077)PM	<b>Contract ID:</b>	200046	<b>AGENDA ITEM</b>
<b>Contractor :</b>	SHERWOOD CONSTRUCTION CO., INC.	<b>Job Piece No.:</b>	29734(04)	<b>141J</b>
<b>Designer:</b>	OKLA. DEPT. OF TRANSPORTATION	<b>Highway No.:</b>	I-35	
<b>Description:</b>	GRADE, DRAIN, AND SURFACE I-35: FROM SH-59, EXTEND NORTH NEAR WAYNE. PROJECT LENGTH = 2.400 MILES			
<b>Contract Amount:</b>	\$16,636,130.93	<b>Funds Available:</b>	\$17,561,149.47	<b>Funds Paid(%) :</b> 99%
<b>Change Order</b>	3	<b>Original Time Used:</b>	89%	<b>Revised Time Used:</b> 89%

Request approval of Change order No. 3 for a supplemental agreement and an additional appropriation in the amount of \$99,750.63.

Engineering: This change provides payment for the overrun of the edge drain outlet pay items required to complete the project as specified due to only one foreslope being utilized in the quantity calculations; for the additional work required to retrofit the existing parapet on the north end of the southbound bridge over SH-59 due to it being too short to properly connect a thrie beam; for the removal of cable barrier and end anchor pay items required to construct the new blockout crossover as outlined on Change Order No. 1; for the overrun of the asphalt removal pay item required to extend the end of project 300 feet to provide a smoother tie-in; and for the delineator and mowing pay items required to complete the project as specified due to these items being inadvertently omitted from the plans.

<b>NEW ITEMS</b>			<b>\$24,715.60</b>
Mowing	18.00 AC	\$110.00 /AC	\$1,980.00
Delineators (Type 2, Code 1, Flexible)	48.00 EA	\$77.35 /EA	\$3,712.80
Construction Miscellaneous (Parapet Retrofit)	2.00 EA	\$9,511.40 /EA	\$19,022.80
<b>OVERRUN ITEMS</b>			<b>\$75,035.03</b>
Outlet Lateral Headwall	45.00 EA	\$375.05 /EA	\$16,877.25
Removal of Asphalt Pavement	3,000.00 SY	\$3.52 /SY	\$10,560.00
Removal of Cable Barrier	1,193.00 LF	\$6.19 /LF	\$7,384.67
End Anchors	1.00 EA	\$5,581.20 /EA	\$5,581.20
Edge Drain Outlet Lateral-Nonperforated	1,955.50 LF	\$17.71 /LF	\$34,631.91

CHANGE ORDER ACTIONS						
CHANGE ORDER NO.	(+/-) Overrun (-) Underrun Amount (\$)	%	Appropriated Amount (\$)	%	Supplemental Agreement Amount(\$)	%
1	\$351,241.85	2.11%	\$351,241.85	2.11%	\$0.00	0.00%
2	\$573,776.69	3.45%	\$573,776.69	3.45%	\$51,589.89	0.31%
3	\$99,750.63	0.60%	\$99,750.63	0.60%	\$24,715.60	0.15%
5	\$0.00	0.00%	\$0.00	0.00%	\$0.00	0.00%
<b>TOTAL</b>	<b>\$1,024,769.17</b>	<b>6.16%</b>	<b>\$1,024,769.17</b>	<b>6.16%</b>	<b>\$76,305.49</b>	<b>0.46%</b>

## Change Orders with Cumulative Total Greater than \$75,000

November 02, 2020 Commission Meeting

<b>Project Number:</b>	STP-254C(040)SS					<b>AGENDA ITEM</b>
				<b>Contract ID:</b>	180019	141K
<b>Contractor :</b>	TREAS CONSTRUCTION, INC.			<b>Job Piece No.:</b>	27963(04)	
				<b>Highway No.:</b>	US-62	
<b>Designer:</b>	GROSSMAN & KEITH ENGINEERING CO.			<b>Div. / County.:</b>	03 / OKFUSKEE	
<b>Description:</b>	BRIDGE AND APPROACHES US-62: OVER BOLEY CREEK, 4.3 MILES NORTHWEST OF THE SH-48 INTERSECTION NEAR BOLEY. PROJECT LENGTH = 0.320 MILE					
<b>Contract Amount:</b>	\$2,519,492.84	<b>Funds Available:</b>	\$2,850,529.12	<b>Funds Paid(%):</b>	94%	
<b>Change Order</b>	5	<b>Original Time Used:</b>	106%	<b>Revised Time Used:</b>	93%	

Request approval of Change Order No. 5 for an additional appropriation in the amount of \$6,312.37.

Site Requirement: This change provides payment for the bridge smoothness incentive earned by the contractor for exceptionally smooth bridge deck and approach slabs on Bridge A as defined in the contract; and for the overrun of the sealer crack preparation and sealer resin pay items required to seal cracks that appeared in the deck after Bridge A was opened to traffic.

<b>NEW ITEM</b>			<b>\$5,004.78</b>
Pavement / Bridge Smoothness Adjustment (Bridge A)	5,004.78 EA	\$1.00 /EA	\$5,004.78
<b>OVERRUN ITEMS</b>			<b>\$1,307.59</b>
Sealer Crack Preparation	180.80 LF	\$5.15 /LF	\$931.12
Sealer Resin	1.70 GAL	\$221.45 /GAL	\$376.47

CHANGE ORDER ACTIONS						
CHANGE ORDER NO.	(+ Overrun (-) Underrun Amount (\$)	%	Appropriated Amount (\$)	%	Supplemental Agreement Amount(\$)	%
1	\$48,516.28	1.93%	\$48,516.28	1.93%	\$3,933.00	0.16%
2	\$23,029.20	0.91%	\$23,029.20	0.91%	\$23,029.20	0.91%
3	\$254,750.80	10.11%	\$254,750.80	10.11%	\$0.00	0.00%
4	\$4,740.00	0.19%	\$4,740.00	0.19%	\$3,504.00	0.14%
5	\$6,312.37	0.25%	\$6,312.37	0.25%	\$0.00	0.00%
<b>TOTAL</b>	<b>\$337,348.65</b>	<b>13.39%</b>	<b>\$337,348.65</b>	<b>13.39%</b>	<b>\$30,466.20</b>	<b>1.21%</b>

## Change Orders with Cumulative Total Greater than \$75,000

**November 02, 2020 Commission Meeting**

<b>Project Number:</b>	OKC-XTWN(006)SS / OKC-XTWN(048)SS	<b>Contract ID:</b>	150026	<b>AGENDA ITEM</b>
<b>Contractor :</b>	ALLEN CONTRACTING, INC./SHELL CONSTRUCTION CO., INC. (JV)	<b>Job Piece No.:</b>	17428(60)	141L
		<b>Highway No.:</b>	CITY STREET	
<b>Designer:</b>	LEIDOS ENGINEERING, LLC	<b>Div. / County.:</b>	04 / OKLAHOMA	
<b>Description:</b>	GRADE, DRAIN, SURFACE, AND BRIDGE CITY STREET (OKC BOULEVARD): E.K. GAYLORD BLVD. FROM RENO AVE., EXTEND SOUTH. OKC BOULEVARD AND 3RD ST. FROM B.N.S.F. RAILROAD, EXTEND EAST TO NORTHBOUND I-35. PROJECT LENGTH = 1.184 MILES.			
<b>Contract Amount:</b>	\$40,611,253.81	<b>Funds Available:</b>	\$45,484,967.63	<b>Funds Paid(%) :</b> 100%
<b>Change Order</b>	27	<b>Original Time Used:</b>	103%	<b>Revised Time Used:</b> 80%

Request approval of Change Order No. 27 for an additional appropriation in the amount of \$41,571.69.

Engineering: This change provides payment for the overrun of the reinforcing steel pay item required to construct the retaining wall footings as planned due to a portion of the quantity being inadvertently omitted from the plans; for the overrun of Class AA concrete pay item required to construct two additional ramps at the end of Bridge BE as part of the bridge walkway due to a request by the BNSF Railroad; and for the overrun of the aggregate base pay item required to provide additional stabilization on Chesapeake Arena Drive.

<b>OVERRUN ITEMS</b>			<b>\$41,571.70</b>
Aggregate Base Type A	33.77 CY	\$56.97 /CY	\$1,923.88
Reinforcing Steel	26,068.30 LB	\$0.99 /LB	\$25,807.62
Class AA Concrete	22.00 CY	\$629.10 /CY	\$13,840.20

CHANGE ORDER ACTIONS							
CHANGE ORDER NO.	(+) Overrun (-) Underrun Amount (\$)	%	Appropriated Amount (\$)	%	Supplemental Agreement Amount(\$)	%	
1	\$21,606.32	0.05%	\$21,606.32	0.05%	\$21,606.32	0.05%	
2	\$17,553.80	0.04%	\$17,553.80	0.04%	\$17,553.80	0.04%	
3	\$14,598.64	0.04%	\$14,598.64	0.04%	\$14,598.64	0.04%	
4	\$13,177.20	0.03%	\$13,177.20	0.03%	\$13,177.20	0.03%	
5	\$13,332.00	0.03%	\$13,332.00	0.03%	\$13,332.00	0.03%	
6	\$19,820.72	0.05%	\$19,820.72	0.05%	\$19,820.72	0.05%	
7	\$50,868.23	0.13%	\$50,868.23	0.13%	\$50,868.23	0.13%	
8	\$9,521.28	0.02%	\$9,521.28	0.02%	\$9,521.28	0.02%	
9	\$600,000.00	1.48%	\$600,000.00	1.48%	\$0.00	0.00%	
10	\$29,571.41	0.07%	\$29,571.41	0.07%	\$29,571.41	0.07%	
11	\$39,156.64	0.10%	\$39,156.64	0.10%	\$39,156.64	0.10%	
12	\$185,445.11	0.46%	\$185,445.11	0.46%	\$185,445.11	0.46%	
13	\$92,781.76	0.23%	\$92,781.76	0.23%	\$92,781.76	0.23%	
15	\$257,800.68	0.63%	\$257,800.68	0.63%	\$257,800.68	0.63%	
16	\$129,198.00	0.32%	\$129,198.00	0.32%	\$129,198.00	0.32%	
17	\$150,000.00	0.37%	\$150,000.00	0.37%	\$0.00	0.00%	
18	\$464,341.93	1.14%	\$464,341.93	1.14%	\$464,341.93	1.14%	
19	\$1,823,395.63	4.49%	\$1,823,395.63	4.49%	\$0.00	0.00%	
20	\$0.00	0.00%	\$0.00	0.00%	\$0.00	0.00%	
21	\$0.00	0.00%	\$0.00	0.00%	\$0.00	0.00%	
22	\$500,000.00	1.23%	\$500,000.00	1.23%	\$0.00	0.00%	



## Change Orders with Cumulative Total Greater than \$75,000

November 02, 2020 Commission Meeting

Project Number:	OKC-XTWN(006)SS / OKC-XTWN(048)SS					
				Contract ID:	150026	
CHANGE ORDER NO.	(+ Overrun (-) Underrun Amount (\$)	%	Appropriated Amount (\$)	%	Supplemental Agreement Amount(\$)	%
23	\$312,190.71	0.77%	\$312,190.71	0.77%	\$0.00	0.00%
25	\$64,965.26	0.16%	\$64,965.26	0.16%	\$64,965.26	0.16%
26	\$64,388.50	0.16%	\$64,388.50	0.16%	\$0.00	0.00%
27	\$41,571.69	0.10%	\$41,571.69	0.10%	\$0.00	0.00%
<b>TOTAL</b>	<b>\$4,915,285.51</b>	<b>12.10%</b>	<b>\$4,915,285.51</b>	<b>12.10%</b>	<b>\$1,423,738.98</b>	<b>3.51%</b>

## Change Orders with Cumulative Total Greater than \$75,000

November 02, 2020 Commission Meeting

<b>Project Number:</b>	ACNHPP1-0040-5(382) / ACNHPP1-4000-(047)		<b>Contract ID:</b>	170289	<b>AGENDA ITEM</b>  141M
<b>Contractor :</b>	DUIT CONSTRUCTION COMPANY, INC.		<b>Job Piece No.:</b>	20324(04)	
<b>Designer:</b>	EST		<b>Highway No.:</b>	I-40	
<b>Description:</b>	GRADE, DRAIN, SURFACE, AND BRIDGE I-40: FROM THE I-240 INTERSECTION, EXTEND SOUTHEAST IN OKLAHOMA CITY. PROJECT LENGTH = 5.182 MILES				
<b>Contract Amount:</b>	\$71,328,987.96	<b>Funds Available:</b>	\$71,560,990.30	<b>Funds Paid(%) :</b>	98%
<b>Change Order</b>	8	<b>Original Time Used:</b>	106%	<b>Revised Time Used:</b>	100%

Request approval of Change Order No. 8 for a supplemental agreement and an additional appropriation in the amount of \$930,167.50.

Site Requirement: This change provides payment for the additional work required to place a latex modified concrete overlay on the I-40 bridges over Choctaw Road due to discovering after these structures were built as planned that the bridge beams did not deflect as intended which resulted in the deck being too thin and exposing the reinforcing steel, as well as creating an unacceptable ride.

NEW ITEMS			\$930,167.50
Bidge Deck Concrete Overlay (Br. B)	1,895.50 SY	\$97.50 /SY	\$184,811.25
Mobilization (Additional)(Bridge Deck Repairs)	1.00 LS	\$60,000.00 /LS	\$60,000.00
Hydrodemolition (Br. B)	1,895.50 SY	\$95.00 /SY	\$180,072.50
Constr. Misc. (Addtnl. Latex Mod. Conc.)(Br. B)	76.00 CY	\$825.00 /CY	\$62,700.00
Constr. Misc. (Addtnl. Latex Mod. Conc.)(Br. C)	76.00 CY	\$825.00 /CY	\$62,700.00
Constr. Misc. (Specialty Engineering)(Br. B)	1.00 LSUM	\$7,500.00 /LSUM	\$7,500.00
Hydrodemolition (Br. C)	1,895.50 SY	\$95.00 /SY	\$180,072.50
Bridge Deck Concrete Overlay (Br. C)	1,895.50 SY	\$97.50 /SY	\$184,811.25
Constr. Misc. (Specialty Engineering)(Br. C)	1.00 LSUM	\$7,500.00 /LSUM	\$7,500.00

CHANGE ORDER ACTIONS						
CHANGE ORDER NO.	(+) Overrun (-) Underrun Amount (\$)	%	Appropriated Amount (\$)	%	Supplemental Agreement Amount(\$)	%
1	\$112,798.34	0.16%	\$112,798.34	0.16%	\$112,798.34	0.16%
2	\$117,500.00	0.16%	\$117,500.00	0.16%	\$0.00	0.00%
3	-\$11,093.87	-0.02%	\$0.00	0.00%	\$0.00	0.00%
4	-\$357,923.59	-0.50%	\$0.00	0.00%	\$0.00	0.00%
5	\$0.00	0.00%	\$0.00	0.00%	\$0.00	0.00%
6	\$1,704.00	0.00%	\$1,704.00	0.00%	\$1,704.00	0.00%
7	\$0.00	0.00%	\$0.00	0.00%	\$0.00	0.00%
8	\$930,167.50	1.30%	\$930,167.50	1.30%	\$930,167.50	1.30%
<b>TOTAL</b>	<b>\$793,152.38</b>	<b>1.11%</b>	<b>\$1,162,169.84</b>	<b>1.63%</b>	<b>\$1,044,669.84</b>	<b>1.46%</b>

## Change Orders with Cumulative Total Greater than \$75,000

**November 02, 2020 Commission Meeting**

<b>Project Number:</b>	TAP-255C(490)TP / NHPP-255N(489)EH		<b>Contract ID:</b>	190323	<b>AGENDA ITEM</b>  141N
<b>Contractor :</b>	CROSSLAND HEAVY CONTRACTORS INC.		<b>Job Piece No.:</b>	32984(04)	
<b>Designer:</b>	R.L. SHEARS COMPANY		<b>Highway No.:</b>	SH-66	
<b>Description:</b>	PEDESTRIAN IMPROVEMENTS (TRAIL CONSTRUCTION) SH-66 MULTI-USE TRAIL: FROM MIDWEST BOULEVARD, EXTEND EAST IN THE CITY OF EDMOND. PROJECT LENGTH = 2.427 MILES		<b>Div. / County.:</b>	04 / OKLAHOMA	
<b>Contract Amount:</b>	\$3,498,010.71	<b>Funds Available:</b>	\$3,623,024.97	<b>Funds Paid(%) :</b>	77%
<b>Change Order</b>	2	<b>Original Time Used:</b>	75%	<b>Revised Time Used:</b>	75%

Request approval of Change Order No. 2 for a supplemental agreement and an additional appropriation in the amount of \$21,396.42.

Site Requirement: This change provides payment for the additional work required to install erosion control measures along the creek bottoms to prevent future erosion issues; and for the mowing pay item required to perform mowing operations throughout the project during construction due to this work being inadvertently omitted from the plans.

<b>NEW ITEMS</b>				<b>\$6,371.00</b>
Construction Miscellaneous (Concrete Erosion Mat)	111.50 TON	\$54.00 /TON		\$6,021.00
Mowing	1.00 AC	\$350.00 /AC		\$350.00
<b>OVERRUN ITEM</b>				<b>\$15,025.42</b>
Type 1 Plain Riprap	224.26 TON	\$67.00 /TON		\$15,025.42

<b>CHANGE ORDER ACTIONS</b>						
CHANGE ORDER NO.	(+) Overrun (-) Underrun Amount (\$)	%	Appropriated Amount (\$)	%	Supplemental Agreement Amount(\$)	%
1	\$125,014.26	3.57%	\$125,014.26	3.57%	\$0.00	0.00%
2	\$21,396.42	0.61%	\$21,396.42	0.61%	\$6,371.00	0.18%
<b>TOTAL</b>	<b>\$146,410.68</b>	<b>4.19%</b>	<b>\$146,410.68</b>	<b>4.19%</b>	<b>\$6,371.00</b>	<b>0.18%</b>

## Change Orders with Cumulative Total Greater than \$75,000

November 02, 2020 Commission Meeting

<b>Project Number:</b>	STPG-255F(483)AG				<b>AGENDA ITEM</b>
		<b>Contract ID:</b>	190325	<b>1410</b>	
<b>Contractor :</b>	MIDSTATE TRAFFIC CONTROL, INC.		<b>Job Piece No.:</b>		
			<b>Highway No.:</b>	CITY STREETS	
<b>Designer:</b>	JACOBS ENGINEERING GROUP, INC.		<b>Div. / County.:</b>	04 / OKLAHOMA	
<b>Description:</b>	TRAFFIC SIGNALS CITY STREETS: AT MULTIPLE LOCATIONS IN THE CITY OF MIDWEST CITY. PROJECT LENGTH = 0.00 MILE				
<b>Contract Amount:</b>	\$618,806.50	<b>Funds Available:</b>	\$627,892.50	<b>Funds Paid(%) :</b>	99%
<b>Change Order</b>	3	<b>Original Time Used:</b>	99%	<b>Revised Time Used:</b>	99%

Request approval of Change Order No. 3 for a supplemental agreement and an additional appropriation in the amount of \$105,500.05.

Engineering: This change provides payment for the video detection system pay items required to install cameras at three additional intersections due to this work being inadvertently omitted from the plans; and for the overrun of various pay items required to complete the project as specified due to various unforeseen site conditions and underestimation of the contract amounts.

<b>NEW ITEM</b>			<b>\$72,000.00</b>
Detection System (Video)	1.00 LSUM	\$24,000.00 /LSUM	\$24,000.00
Detection System (Video)	1.00 LSUM	\$24,000.00 /LSUM	\$24,000.00
Detection System (Video)	1.00 LSUM	\$24,000.00 /LSUM	\$24,000.00
<b>OVERRUN ITEMS</b>			<b>\$31,680.70</b>
Concrete Curb (6" Barrier-Integral)	74.00 LF	\$35.00 /LF	\$2,590.00
4" Concrete Sidewalk	164.00 SY	\$75.00 /SY	\$12,300.00
Removal of Sidewalk	233.69 SY	\$30.00 /SY	\$7,010.70
Sawing Pavement	73.00 LF	\$35.00 /LF	\$2,555.00
3" PVC Sch.40 Plastic Conduit Bored	289.00 LF	\$25.00 /LF	\$7,225.00
<b>OVERRUN OF PREVIOUSLY ESTABLISHED C/O ITEMS</b>			<b>\$1,819.35</b>
Removal of Asphalt Pavement	55.33 SY	\$16.50 /SY	\$912.95
8" Concrete Driveway	2.05 SY	\$88.00 /SY	\$180.40
Removal of Fence	13.00 LF	\$22.00 /LF	\$286.00
Fence-Style WWF	20.00 LF	\$22.00 /LF	\$440.00

CHANGE ORDER ACTIONS						
CHANGE ORDER NO.	(+) Overrun (-) Underrun Amount (\$)	%	Appropriated Amount (\$)	%	Supplemental Agreement Amount(\$)	%
1	\$0.00	0.00%	\$0.00	0.00%	\$0.00	0.00%
2	\$9,086.00	1.47%	\$9,086.00	1.47%	\$9,086.00	1.47%
3	\$105,500.05	17.05%	\$105,500.05	17.05%	\$73,819.35	11.93%
<b>TOTAL</b>	<b>\$114,586.05</b>	<b>18.52%</b>	<b>\$114,586.05</b>	<b>18.52%</b>	<b>\$82,905.35</b>	<b>13.40%</b>

## Change Orders with Cumulative Total Greater than \$75,000

November 02, 2020 Commission Meeting

<b>Project Number:</b>	ACSTP-156C(136)SS	<b>Contract ID:</b>	160255	<b>AGENDA ITEM</b>  141P	
<b>Contractor :</b>	THE CUMMINS CONSTRUCTION CO., INC.	<b>Job Piece No.:</b>	24369(04)		
<b>Designer:</b>	CEC CORPORATION	<b>Highway No.:</b>	US-75A		
<b>Description:</b>	GRADE, DRAIN, SURFACE, AND BRIDGE US-75A: FROM 1.1 MILES NORTH OF THE SH-16 JUNCTION, EXTEND NORTH IN BEGGS. PROJECT LENGTH = 7.511 MILES.				
<b>Contract Amount:</b>	\$16,214,688.52	<b>Funds Available:</b>	\$16,780,074.05	<b>Funds Paid(%) :</b>	100%
<b>Change Order</b>	5	<b>Original Time Used:</b>	136%	<b>Revised Time Used:</b>	100%

Request approval of Change Order No. 5 for an additional appropriation in the amount of \$146,687.36.

Site Requirement: This change provides payment for the additional expense incurred by the contractor due to the increase of the asphalt binder price index as provided for in the contract.

**NEW ITEM**

\$146,687.36

Asphalt Binder Price Adjustment 1.00 LSUM \$146,687.36 /LSUM \$146,687.36

CHANGE ORDER ACTIONS						
CHANGE ORDER NO.	(+) Overrun (-) Underrun Amount (\$)	%	Appropriated Amount (\$)	%	Supplemental Agreement Amount(\$)	%
1	\$263,030.00	1.62%	\$263,030.00	1.62%	\$263,030.00	1.62%
2	-\$77,882.90	-0.48%	\$0.00	0.00%	\$0.00	0.00%
3	\$0.00	0.00%	\$0.00	0.00%	\$0.00	0.00%
4	\$302,355.53	1.86%	\$302,355.53	1.86%	\$157,716.51	0.97%
5	\$146,687.36	0.90%	\$146,687.36	0.90%	\$0.00	0.00%
<b>TOTAL</b>	<b>\$634,189.99</b>	<b>3.91%</b>	<b>\$712,072.89</b>	<b>4.39%</b>	<b>\$420,746.51</b>	<b>2.59%</b>

## Change Orders with Cumulative Total Greater than \$75,000

**November 02, 2020 Commission Meeting**

<b>Project Number:</b>	NHPP-008N(059)FP / NHPP-008N(090)FP			<b>AGENDA ITEM</b>	
		<b>Contract ID:</b>	190097	<b>141Q</b>	
<b>Contractor :</b>	J & R SAND COMPANY, INC.		<b>Job Piece No.:</b>		
			<b>Highway No.:</b>	US-54	
<b>Designer:</b>	CHIANG, PATEL & YERBY, INC.		<b>Div. / County.:</b>	06 / TEXAS	
<b>Description:</b>	GRADE, DRAIN, AND SURFACE US-54: FROM 4.8 MILES NORTHEAST OF THE US-64 JUNCTION. PROJECT LENGTH = 7.294 MILES				
<b>Contract Amount:</b>	\$11,898,921.62	<b>Funds Available:</b>	\$12,159,477.87	<b>Funds Paid(%) :</b>	98%
<b>Change Order</b>	3	<b>Original Time Used:</b>	99%	<b>Revised Time Used:</b>	99%

Request approval of Change Order No. 3 for a supplemental agreement resulting in an underrun to the contract in the amount of \$150,487.56.

Engineering: This change documents the underrun of the temporary silt fence pay items due to the contract amount not being required to provide adequate temporary erosion control during construction. This change provides for the unrecoverable expenses and lost overhead incurred by the contractor due to the significant underrun of these major pay items.

<b>NEW ITEM</b>			<b>\$16,720.84</b>
Temporary Silt Fence (Lost Overhead)	2,552.80 LF	\$6.55 /LF	\$16,720.84
<b>UNDERRUN ITEM</b>			<b>-\$167,208.40</b>
Temporary Silt Fence	-24,479.00 LF	\$6.55 /LF	-\$160,337.45
Temporary Silt Fence	-1,049.00 LF	\$6.55 /LF	-\$6,870.95

<b>CHANGE ORDER ACTIONS</b>						
CHANGE ORDER NO.	(+) Overrun (-) Underrun Amount (\$)	%	Appropriated Amount (\$)	%	Supplemental Agreement Amount(\$)	%
1	\$258,906.25	2.18%	\$258,906.25	2.18%	\$0.00	0.00%
2	\$1,650.00	0.01%	\$1,650.00	0.01%	\$1,650.00	0.01%
3	-\$150,487.56	-1.26%	\$0.00	0.00%	\$0.00	0.00%
<b>TOTAL</b>	<b>\$110,068.69</b>	<b>0.93%</b>	<b>\$260,556.25</b>	<b>2.19%</b>	<b>\$1,650.00</b>	<b>0.01%</b>

## Change Orders with Cumulative Total Greater than \$75,000

November 02, 2020 Commission Meeting

<b>Project Number:</b>	STP-271C(067)PM	<b>Contract ID:</b>	200035	<b>AGENDA ITEM</b>  141R
<b>Contractor :</b>	K & R BUILDERS, INC.	<b>Job Piece No.:</b>	29514(04)	
<b>Designer:</b>	CHIANG, PATEL & YERBY, INC.	<b>Highway No.:</b>	US-70	
<b>Description:</b>	BRIDGE AND APPROACHES US-70: OVER BOTTLE CREEK AND SUTTLE CREEK, 1.1 MILES AND 3.3 MILES EAST OF THE US-183 JUNCTION NEAR DAVIDSON. PROJECT LENGTH = 0.378 MILE			
<b>Contract Amount:</b>	\$3,199,743.58	<b>Funds Available:</b>	\$3,199,743.58	<b>Funds Paid(%) :</b> 68%
<b>Change Order</b>	2	<b>Original Time Used:</b>	36%	<b>Revised Time Used:</b> 36%

Request approval of Change Order No. 2 for an additional appropriation in the amount of \$90,000.00.

Site Requirement: This change provides payment for the early completion incentive earned by the contractor for achieving substantial completion on Bridge A for Milestone No. 1 prior to the time allowed in the contract.

**NEW ITEM**

\$90,000.00

Incentive for Early Completion (Milestone No. 1)

1.00 LSUM

\$90,000.00 /LSUM

\$90,000.00

CHANGE ORDER ACTIONS						
CHANGE ORDER NO.	(+) Overrun (-) Underrun Amount (\$)	%	Appropriated Amount (\$)	%	Supplemental Agreement Amount(\$)	%
1	\$0.00	0.00%	\$0.00	0.00%	\$0.00	0.00%
2	\$90,000.00	2.81%	\$90,000.00	2.81%	\$0.00	0.00%
<b>TOTAL</b>	<b>\$90,000.00</b>	<b>2.81%</b>	<b>\$90,000.00</b>	<b>2.81%</b>	<b>\$0.00</b>	<b>0.00%</b>

## Change Orders with Cumulative Total Greater than \$75,000

**November 02, 2020 Commission Meeting**

<b>Project Number:</b>	STP-172B(400)IG			<b>AGENDA ITEM</b>
		<b>Contract ID:</b>	200126	<b>141S</b>
<b>Contractor :</b>	SHERWOOD CONSTRUCTION CO., INC.	<b>Job Piece No.:</b>	25212(04)	
		<b>Highway No.:</b>	CITY STREETS	
<b>Designer:</b>	BKL, INC.	<b>Div. / County.:</b>	08 / TULSA	
<b>Description:</b>	GRADE, DRAIN, SURFACE, AND BRIDGE CITY STREETS (WEST 111TH STREET SOUTH): AT THE INTERSECTION OF SOUTH ELWOOD AVENUE IN THE CITY OF JENKS. PROJECT LENGTH = 0.893 MILE			
<b>Contract Amount:</b>	\$6,145,684.67	<b>Funds Available:</b>	\$6,434,924.11	<b>Funds Paid(%):</b> 26%
<b>Change Order</b>	2	<b>Original Time Used:</b>	36%	<b>Revised Time Used:</b> 36%

Request approval of Change Order No. 2 for a supplemental agreement and an additional appropriation in the amount of \$653,718.12.

Engineering: This change provides payment for the additional work required to relocate a waterline near 111th Street and South Elwood Avenue due to the water relocation plans being inadvertently omitted from the construction plans; and for the additional work required to remove and reset existing mailboxes that are in conflict with construction. This change imposes a unit price reduction for that portion of the 6-inch PVC pipe pay item in excess of 125% of the contract amount due to the significant overrun of this major item of work. This change extends the contract time seventy days to complete this additional work.

<b>NEW ITEMS</b>	<b>\$399,380.71</b>		
Remove and Reset Mailbox	6.00 EA	\$245.66 /EA	\$1,473.96
6" Polyvinyl Chloride (PVC) Pipe	3,195.75 LF	-\$7.95 /LF	-\$25,406.21
2" Air Relief Valve Assembly & Meter Can	2.00 EA	\$3,630.00 /EA	\$7,260.00
2" Gate Valve	3.00 EA	\$506.00 /EA	\$1,518.00
4" Gate Valve	2.00 EA	\$682.00 /EA	\$1,364.00
Flush Fire Hydrants	3.00 EA	\$1,837.00 /EA	\$5,511.00
6" Steel Casing	60.00 LF	\$110.00 /LF	\$6,600.00
Service Connection (Short)	11.00 EA	\$715.00 /EA	\$7,865.00
Service Connection (Long)	5.00 EA	\$990.00 /EA	\$4,950.00
Wet Connection (2")	2.00 EA	\$330.00 /EA	\$660.00
Wet Connection (4")	1.00 EA	\$550.00 /EA	\$550.00
Wet Connection (6")	3.00 EA	\$660.00 /EA	\$1,980.00
Trench Excavation	1,575.00 CY	\$13.50 /CY	\$21,262.50
Ductile Iron Fittings	1,189.00 LB	\$7.70 /LB	\$9,155.30
2" Polyvinyl Chloride (PVC) Pipe	690.00 LF	\$51.67 /LF	\$35,652.30
4" Polyvinyl Chloride (PVC) Pipe	169.00 LF	\$23.94 /LF	\$4,045.86
6" Master Meter Vault	2.00 EA	\$4,290.00 /EA	\$8,580.00
14" Steel Casing	455.00 LF	\$146.30 /LF	\$66,566.50
8" HDPE Pipe	600.00 LF	\$308.00 /LF	\$184,800.00
6" HDPE Pipe (Bored)	140.00 LF	\$291.50 /LF	\$40,810.00
4" Mechanical Joint Restraint	3.00 EA	\$110.00 /EA	\$330.00
6" Mechanical Joint Restraint	55.00 EA	\$115.50 /EA	\$6,352.50
Survey	1.00 LSUM	\$7,500.00 /LSUM	\$7,500.00
<b>OVERRUN ITEMS</b>	<b>\$254,337.41</b>		
6" Polyvinyl Chloride (PVC) Pipe	3,017.00 LF	\$79.51 /LF	\$239,881.67



## Change Orders with Cumulative Total Greater than \$75,000

November 02, 2020 Commission Meeting

<b>Project Number:</b>	STP-172B(400)IG	<b>Contract ID:</b>	200126
------------------------	-----------------	---------------------	--------

<b>OVERRUN ITEMS</b>			<b>\$254,337.41</b>
6" Gate Valve	13.00 EA	\$806.16 /EA	\$10,480.08
Standard Valve Box	18.00 EA	\$220.87 /EA	\$3,975.66

CHANGE ORDER ACTIONS						
CHANGE ORDER NO.	(+ Overrun - Underrun Amount (\$)	%	Appropriated Amount (\$)	%	Supplemental Agreement Amount(\$)	%
1	\$289,239.44	4.71%	\$289,239.44	4.71%	\$99,101.05	1.61%
2	\$653,718.12	10.64%	\$653,718.12	10.64%	\$399,380.71	6.50%
<b>TOTAL</b>	<b>\$942,957.56</b>	<b>15.34%</b>	<b>\$942,957.56</b>	<b>15.34%</b>	<b>\$498,481.76</b>	<b>8.11%</b>

## Change Orders with Cumulative Total Greater than \$75,000

November 02, 2020 Commission Meeting

<b>Project Number:</b>	STP-272B(278)CI	<b>Contract ID:</b>	200085	<b>AGENDA ITEM</b>
<b>Contractor :</b>	CROSSLAND HEAVY CONTRACTORS INC.	<b>Job Piece No.:</b>	30703(04)	141T
<b>Designer:</b>	WALTER P. MOORE & ASSOCIATES	<b>Highway No.:</b>	CITY STREETS	
<b>Description:</b>	GRADE, DRAIN, SURFACE, AND TRAFFIC SIGNALS CITY STREETS (EAST 116TH STREET NORTH); AT THE INTERSECTION OF NORTH 129TH EAST AVENUE IN OWASSO. PROJECT LENGTH = 0.426 MILE			
<b>Contract Amount:</b>	\$2,887,000.00	<b>Funds Available:</b>	\$2,951,670.70	<b>Funds Paid(%):</b> 32%
<b>Change Order</b>	3	<b>Original Time Used:</b>	47%	<b>Revised Time Used:</b> 44%

Request approval of Change Order No. 3 for a supplemental agreement and an additional appropriation in the amount of \$34,366.90.

Engineering: This change provides payment for the additional pay items required to complete the relocation of a waterline as planned due to these items being inadvertently omitted from the plans. Funding for these items will be non-participating in nature.

NEW ITEMS (NON-PARTICIPATING)	<b>\$34,366.90</b>		
6" Blind Flange	1.00 EA	\$260.00 /EA	\$260.00
2" Solid Sleeve	1.00 EA	\$985.00 /EA	\$985.00
2" HDPE Pipe	10.00 LF	\$56.00 /LF	\$560.00
Wet Connection (2")	1.00 EA	\$750.00 /EA	\$750.00
Service Connection (Short)	3.00 EA	\$3,032.48 /EA	\$9,097.44
Service Connection (Short)	1.00 EA	\$6,293.55 /EA	\$6,293.55
Construction Miscellaneous (Fire Meter Relocation)	1.00 EA	\$16,420.91 /EA	\$16,420.91

CHANGE ORDER ACTIONS							
CHANGE ORDER NO.	(+) Overrun (-) Underrun Amount (\$)	%	Appropriated Amount (\$)	%	Supplemental Agreement Amount(\$)	%	
1	\$47,245.00	1.64%	\$47,245.00	1.64%	\$47,245.00	1.64%	
2	\$17,425.70	0.60%	\$17,425.70	0.60%	\$17,425.70	0.60%	
3	\$34,366.90	1.19%	\$34,366.90	1.19%	\$34,366.90	1.19%	
<b>TOTAL</b>	<b>\$99,037.60</b>	<b>3.43%</b>	<b>\$99,037.60</b>	<b>3.43%</b>	<b>\$99,037.60</b>	<b>3.43%</b>	

STATEMENT OF OVERRUNS AND UNDERRUNS  
ON PROJECTS APPROVED BY THE CONSTRUCTION DIVISION  
FOR FINAL PAYMENT THE MONTH OF SEPTEMBER, 2020

Project	Job Piece	County Name	Count y No	Contract Amount	Amount Paid	Overrun	Underrun	Percent Overrun	Explanation of Overrun or 10% or more Underrun
CIRB-213C(024)RB	2482608	CIMARRON	13	\$2,999,125.73	\$2,532,926.85	\$0.00	(\$466,198.88)	0.00%	Underrun erosion control and paving
CIRB-248D(041)RB	3235504	GREER	28	\$939,290.70	\$1,059,931.39	\$120,640.69	\$0.00	12.84%	Overrun paving
CIRB-252D(019)RB	2986704	NOBLE	52	\$429,155.24	\$427,173.76	\$0.00	(\$1,981.48)	0.00%	Overrun bridge
CIRB-274D(024)RB	3061804	WASHINGTON	74	\$822,394.71	\$827,640.65	\$5,245.94	\$0.00	0.64%	Overrun bridge
HSIP-272N(255)PM	3270204	TULSA	72	\$575,322.10	\$552,255.86	\$0.00	(\$23,066.24)	0.00%	Underrun joint seal and traffic control
MC-256N(054)	3404604	OKMULGEE	56	\$360,333.90	\$290,564.21	\$0.00	(\$69,769.69)	6.48%	Overrun right-of-way clearance
NHPP-209N(083)RW	2790008	BECKHAM	05	\$47,000.01	\$50,047.21	\$3,047.20	\$0.00	0.00%	
NHPP-203N(066)3P	3373604	CANADIAN	09	\$4,253,278.50	\$4,107,296.60	\$0.00	(\$145,981.90)	0.00%	
NHPPG-214N(098)AG	3253304	CLEVELAND	14	\$207,536.00	\$199,738.00	\$0.00	(\$7,798.00)	0.00%	
NHPP-4400-(027)PM	2949504	OKLAHOMA	55	\$4,070,015.02	\$4,595,849.93	\$525,834.91	\$0.00	12.92%	Overrun bridge rehab and traffic control
SAP-240C(078)ES	3450404	LEFLORE	40	\$116,245.00	\$112,025.00	\$0.00	(\$4,220.00)	0.00%	
SBR-210C(069)SB	31308(04)	CARTER	10	\$458,934.10	\$430,038.46	\$10,746.20	(\$28,895.64)	0.00%	
SBR-214C(086)SB	3341404	CLEVELAND	14	\$1,885,495.63	\$1,989,510.94	\$104,015.31	\$0.00	5.52%	Overrun traffic control and bridge painting
SBR-226B(074)SB	3347704	GRADY	26	\$1,289,067.32	\$1,271,590.25	\$0.00	(\$17,477.07)	0.00%	
SSP-160B(190)SS	2636904	PAYNE	60	\$7,354,181.48	\$8,018,137.08	\$663,955.60	\$0.00	9.03%	Paid incentive for early completion and overrun excavation
SSR-228B(018)SR	3439304	GREER	28	\$570,133.91	\$561,338.44	\$0.00	(\$8,795.47)	0.00%	
SSR-240N(077)SR	3338704	LEFLORE	40	\$932,015.50	\$873,027.18	\$0.00	(\$58,988.32)	0.00%	
SSR-245C(061)SR	3438204	MCCURTAIN	45	\$993,368.65	\$1,026,904.37	\$33,535.72	\$0.00	3.38%	Overrun unclassified borrow and erosion control
STP-204C(027)CI	2834404	BEAVER	04	\$706,908.68	\$675,689.20	\$0.00	(\$31,219.48)	0.00%	
STP-203F(082)3P	3111204	BECKHAM	05	\$2,516,314.44	\$2,456,461.19	\$0.00	(\$59,853.25)	0.00%	
STP-240C(31)(29)SS/SBR-245C(004)SB/SBR-240N(022)SB/NHPP-240N(032)SS	2702904	LEFLORE	40	\$12,483,862.80	\$13,014,046.18	\$530,183.38	\$0.00	4.25%	
STP-241C(060)3P	2820204	LINCOLN	41	\$2,027,247.08	\$2,087,234.88	\$59,987.80	\$0.00	2.96%	Paid incentive for early completion and overrun bridge
STP-272F(252)3B	3357704	TULSA	72	\$1,023,938.89	\$1,100,361.41	\$76,422.52	\$0.00	7.46%	Overrun concrete and material on hand
STP-276F(036)3B	3413804	WOODS	76	\$151,953.24	\$133,878.13	\$0.00	(\$18,075.11)	0.00%	Overrun bridge repair
TAP-256D(043)TP	3299104	OKMULGEE	56	\$772,000.00	\$835,165.65	\$63,165.65	\$0.00	8.18%	Underrun joint seal
TAP-263D(049)TP	3297604	POTTAWATOMIE	63	\$175,128.00	\$157,925.59	\$0.00	(\$17,202.41)	0.00%	Overrun traffic control and unclassified borrow
TAP-273A(049)IG	3304104	WAGONER	73	\$383,318.00	\$381,945.38	\$0.00	(\$1,372.62)	0.00%	
<b>Grand Total</b>				<b>\$48,543,564.63</b>	<b>\$49,768,703.79</b>	<b>\$2,196,780.92</b>	<b>(\$960,895.56)</b>		

THESE 27 PROJECTS RECEIVED FINAL APPROVAL BY THE CONSTRUCTION DIVISION DURING THE MONTH OF SEPTEMBER, 2020  
THE ORIGINAL AMOUNT; OVERRUNS, UNDERRUNS AND THE AMOUNT PAID ON THE FINAL ESTIMATE ARE SHOWN

**FOR PRESENTATION AT THE COMMISSION MEETING OF NOVEMBER 2, 2020**

**AGENDA ITEM NO. 142**

**SUBJECT: PROPOSED BID OPENINGS**

**COUNTY: STATEWIDE**

**This item consists of the final January 2021 bid opening for \$90,070,932, the tentative February 2021 bid opening for \$89,152,548, and the tentative March 2021 bid opening for \$115,057,021.**

**The Department recommends Commission approval of the final January 2021, tentative February 2021 and the tentative March 2021 bid openings.**

PROJECTS AWARDED				PROJECTS AWARDED			
LETTING MONTH		TOTAL		LETTING MONTH		TOTAL	
SEPTEMBER	2018	\$	83,030,236	SEPTEMBER	2019	\$	30,450,469
OCTOBER	2018	\$	83,661,671	OCTOBER	2019	\$	86,317,051
NOVEMBER	2018	\$	205,993,127	NOVEMBER	2019	\$	100,182,781
DECEMBER	2018	\$	-	DECEMBER	2019	\$	-
JANUARY	2019	\$	72,327,830	JANUARY	2020	\$	152,348,707
FEBRUARY	2019	\$	65,671,551	FEBRUARY	2020	\$	107,297,269
MARCH	2019	\$	38,083,890	MARCH	2020	\$	63,688,215
APRIL	2019	\$	100,665,648	APRIL	2020	\$	88,401,664
MAY	2019	\$	146,374,234	MAY	2020	\$	166,889,675
JUNE	2019	\$	101,798,131	JUNE	2020	\$	44,395,646
JULY	2019	\$	198,338,808	JULY	2020	\$	198,338,808
AUGUST	2019	\$	47,460,042	AUGUST	2020	\$	146,416,153
TOTAL		\$	1,143,405,168	TOTAL		\$	1,184,726,438

JobPiece	CD	Highway	MILES	Adv Con	Federal	State	Other	Total
29785(04)	6	COBRGE	0.060	0.00	600,000.00	0.00	200,000.00 (B)	800,000.00
ALFALEFA		BRIDGE & APPROACHES BR AND APPR OVER EAST CLAY CREEK ON CO RD EW-30, 7.6 MILES EAST OF CARMEN CN 3156 STP -202C (047) CI						
32750(04)	6	SH045	3.000	0.00	0.00	450,000.00	0.00	450,000.00
ALFALEFA		RESURFACE SH-45; BEGIN A SH-8 JCT. AND EXTEND EAST 3 MILES SSR -202C (057) SR						
32751(04)	6	SH045	6.200	0.00	0.00	930,000.00	0.00	930,000.00
ALFALEFA		RESURFACE SH-45; BEGIN AT SH-58 JCT. SOUTH OF HELENA AND EXTEND EAST 6.2 MILES SSR -202C (058) SR						
32753(04)	6	SH045	4.000	0.00	0.00	840,000.00	0.00	840,000.00
ALFALEFA		RESURFACE SH-45; BEGIN AT WOODS C/L AND EXTEND EAST 4 MILES SSR -202B (059) SR						
31001(04)	5	IS040	0.200	0.00	5,005,340.62	1,251,334.64	0.00	6,256,675.26
BECKHAM		BRIDGE REHABILITATION I-40: OVER THE N FORK OF RED RIVER LOCATED 2.0 MILES EAST OF US-283. EB AND WB BRIDGES NHPEI -4000- (098) PM						
30214(04)	7	COBRGE	0.260	0.00	363,286.00	0.00	1,198,714.00 (B)	1,562,000.00
CADDO		BRIDGE & APPROACHES COUNTY ROAD (EW-134) OVER THE WASHITA RIVER APPROX 1.0 MILE WEST OF ANADARKO STP -208B (089) CI						
34417(04)	7	US062	7.570	0.00	0.00	2,460,000.00	0.00	2,460,000.00
CADDO		RESURFACE US-62: FROM 0.58 MILES EAST OF JCT SH-8S, EXT. EAST 7.58 MILES TO GRADY C/ SSR -208B (098) SR						
24761(04)	3	US075	0.020	0.00	791,757.91	791,757.91	0.00	1,583,515.82
COAL		BRIDGE & APPROACHES US-75 OVER CANEY CREEK, 9.8 MI NORTH OF ATOKA C/L NHPP -215N (039) PM						
35183(04)	7	IS044	1.000	0.00	0.00	437,000.00	0.00	437,000.00
COTTON		RESURFACE I-44: FROM TEXAS SL, EXTEND NORTH 1.00 MILE SSR -4400 (086) SR						
32999(04)	5	ENHAN	0.000	0.00	621,635.00	0.00	155,409.00 (A)	777,044.00
CUSTER		PEDESTRIAN / BIKE IMPROVEMENTS THOMAS: DOWNTOWN STREETScape PHASE 2 TAP -220D (070) TP						
30437(04)	4	COBRGE	0.050	0.00	560,000.00	0.00	140,000.00 (B)	700,000.00
GARFIELD		BRIDGE & APPROACHES BRIDGE & APPROACHES N NS-296 OVER RED ROCK CREEK, 6.0 MILES EAST & 3.9 MILES SOUTH OF KREMLIN CN 341B STP -224C (084) CI						
35205(04)	3	SH019	2.400	0.00	0.00	396,902.38	0.00	396,902.38
GARVIN		RESURFACE SH-19: RESURFACE BEGIN AT GRADY COUNTY LINE EXTEND EAST 2.4 MILES MC -225C (092) MD						
28442(04)	7	COBRGE	0.050	0.00	0.00	0.00	1,072,695.00 (B)	1,072,695.00
GRADY		BRIDGE & APPROACHES BRIDGE AND APPROACHES (EW-137) OVER TRIB. TO WEST BITTER CREEK, 0.4 MILES WEST AND 1.0 MILE SOUTH OF JCT US-62/SH-39 CIRB -226D (084) RB						
31113(04)	7	COBRGE	0.050	0.00	418,071.00	0.00	2,084,234.00 (B)	2,502,305.00
GRADY		BRIDGE & APPROACHES BRIDGE AND APPROACHES (NS-2958) OVER RUSH CREEK, 13.3 MILES EAST AND 4.7 MILES SOUTH OF RUSH SPRINGS STP -226C (083) CI						

JobPiece	CD	Highway	MILES	Adv Con	Federal	State	Other	Total
24224 (04)	6	US183	4.600	0.00	3,450,000.00	3,450,000.00	0.00	6,900,000.00
HARPER		WIDEN & RESURFACE US-183: FR THE HARPER/WOODWARD C/L., EXT. N. 4.6 MI.						
		STP	-130C (149)	PM				
29561 (04)	3	SH007	0.020	0.00	692,301.11	692,300.08	0.00	1,384,601.19
JOHNSTON		BRIDGE REHABILITATION SH-7 OVER KEEL CREEK, 3.8 MI WEST OF SH-99						
		STP	-235C (053)	PM				
29806 (04)	3	SH078	8.000	0.00	0.00	1,200,000.00	0.00	1,200,000.00
JOHNSTON		RESURFACE SH-78: FROM BRYAN C/L, EXTEND NORTH 8.0 MI						
		SSR	-235C (058)	SR				
29806 (05)	3	SH078	7.430	0.00	0.00	1,099,500.00	0.00	1,099,500.00
JOHNSTON		RESURFACE SH-78: FROM 8.0 MI NORTH OF BRYAN C/L, EXTEND NORTH THEN WEST 7.43 MI						
		SSR	-235C (059)	SR				
31049 (04)	3	SH048	0.200	0.00	222,360.00	222,360.00	0.00	444,720.00
JOHNSTON		BRIDGE & APPROACHES SH-48 OVER UNNAMED CREEK, 5.8 MI SOUTH JCT SH-7						
		STP	-235C (054)	PM				
33427 (04)	4	US177	3.000	0.00	0.00	1,617,900.00	0.00	1,617,900.00
KAY		RESURFACE US-177: FROM CHRYSLER AVE NORTH 3.0 MILES TO ADOBE ROAD						
		SSR	-236C (075)	SR				
27945 (04)	4	SH051	7.530	0.00	7,282,100.00	7,282,100.00	0.00	14,564,200.00
KINGFISHER		GRADE, DRAIN, BRIDGE & SURFACE SH-51: FROM US-81 IN HENNESSEY EAST. 7.53 MI INCLUDES RCB EXTENSIONS & RCB REPLACEMENT OVER CAMP CREEK						
		STP	-237C (034)	PM				
32949 (04)	5	US183	0.450	0.00	473,321.78	0.00	0.00	473,321.78
KIOWA		A.D.A. PROJECTS FOR COMPLIANCE US-183: FROM SH-19 SOUTH TO E. TIFFANY ST.						
		NHPP	-009N (101)	AD				
33382 (04)	2	SH112	5.010	0.00	0.00	1,300,000.00	0.00	1,300,000.00
LEFLORE		RESURFACE SH-112 BEGIN SH-112/US-59 JCT. AND EXTEND NORTH TO SH-112/SH-9A JCT. THEN SH-9A BEGIN 1 MI SOUTHWEST OF SH-112/SH-9A JCT., EXTEND 1 MI NORTHEAST						
		SSR	-240B (083)	SR				
33857 (04)	2	US259	10.000	0.00	0.00	1,700,000.00	0.00	1,700,000.00
LEFLORE		RESURFACE US-259: BEGIN 4.2 MI NORTH OF JCT US-259/SH-144, EXTEND NORTH 10.0 MI						
		SSR	-240N (084)	SR				
33459 (04)	7	US077	2.250	0.00	0.00	1,500,000.00	0.00	1,500,000.00
LOVE		RESURFACE US-77 FROM I-35 AT MM 8 EXTEND NORTH 2.25 MILES						
		SSR	-243C (040)	SR				
31045 (04)	3	IS035	2.250	0.00	10,660,774.40	2,665,193.60	0.00	13,325,968.00
MCCLAIN		PAVEMENT REHABILITATION I-35: BEGIN 2.25 MI NORTH OF GARVIN C/L, MP 83.81 TO MP 86.06						
		NHPPI	-3500- (094)	PM				
33377 (04)	8	SH082	7.680	0.00	0.00	1,320,000.00	0.00	1,320,000.00
MAYES		RESURFACE SH-82: FROM THE JUNCTION OF US-412 AND SH-82, EXTEND NORTH 7.65 MI						
		SSR	-249C (063)	SR				
17827 (04)	4	CT ST	1.000	0.00	5,047,489.00	0.00	1,261,872.00 (A)	6,309,361.00
OKLAHOMA		RECONSTRUCT - ADDED LANES WARR ACRES: MACARTHUR BLVD., FROM NW 34TH STREET TO NW 47TH STREET						
		STP	-155A (196)	AG				

JobPiece	CD	Highway	MILES	Adv Con	Federal	State	Other	Total
33444 (04)	1	SH016	4.900	0.00	0.00	1,230,000.00	0.00	1,230,000.00
OKMULGEE		RESURFACE SH-16: BEGIN 8.52 MI EAST OF US-75 JCT, EXTEND EAST 4.90 MI TO MUSKOGEE C/L						
		SSR -256B (061)						
33374 (04)	8	US060	1.840	0.00	0.00	570,000.00	0.00	570,000.00
OSAGE		RESURFACE US-60: FROM 1.84 MI WEST OF SH-99, EXTEND EAST 1.84 MI						
		SSR -018N (078)						
33741 (04)	8	SH137	6.310	0.00	0.00	1,136,000.00	0.00	1,136,000.00
OTTAWA		RESURFACE SH-137, FROM US-60, EXTEND NORTH 6.31 MILES TO SH-10.						
		SSR -258C (078)						
32989 (04)	2	ENHAN	0.000	0.00	700,000.00	0.00	175,000.00	875,000.00
PITTSBURG		PEDESTRIAN / BIKE IMPROVEMENTS MCALESTER: WATERWAY TRAIL					(A)	
		TAP -261E (093)						
28946 (04)	3	SH001	1.500	0.00	1,432,715.00	358,178.00	3,362,547.00	5,153,440.00
PONTOTOC		GRADE, DRAIN & SURFACE SH-1: FROM 1.5 MI SOUTH OF SH-3, NORTH TO SH-3					(C)	
		NHPP -262N (061)						
33755 (04)	3	SH048	2.800	0.00	0.00	426,629.16	0.00	426,629.16
PONTOTOC		RESURFACE SH-48- BEGIN 9.0 MI NORTH OF COAL C/L, EXT NORTH 2.8 MI						
		MC -262C (063)						
33848 (04)	2	SH003	0.100	0.00	0.00	1,500,000.00	0.00	1,500,000.00
PUSHMATAHA		BRIDGE REHABILITATION SH-3 OVER FRAZIER, 11.89 MI WEST OF MCCURTAIN C/L						
		SBR -264N (073)						
33817 (04)	8	SH020	7.330	0.00	801,401.27	200,350.32	0.00	1,001,751.59
ROGERS		LONGITUDINAL BARRIER SH-20 FROM 5.88 MILES EAST OF SH-66 EXTEND EAST 7.3 MILES INTO MAYES CL						
		HSIPG -266B (068)						
21006 (17)	3	US270	7.570	0.00	164,167.20	41,041.80	0.00	205,209.00
SEMINOLE		RIGHT OF WAY CLEARANCE US-270: RW CLEARANCE FOR 21006 (04) & (11)						
		STP -267B (090)						
33443 (04)	1	US064	7.350	0.00	0.00	1,810,000.00	0.00	1,810,000.00
SEQUOYAH		RESURFACE US-64: BEGIN 2.10 MI EAST OF US-59 JCT, EXTEND EAST 5.90 MI TO SH-141 JCT ADD ALT: EXTEND EAST 1.47 MI						
		SSR -268C (073)						
32941 (04)	7	US081	0.490	0.00	145,000.00	0.00	0.00	145,000.00
STEPHENS		A.D.A. PROJECTS FOR COMPLIANCE US-81: FROM 0.15 MI. SOUTH OF SH-53, EXT. NORTH 0.24 MI. & SH-53: BEG. 0.10 MI. WEST OF US-81, EXT. EAST 0.25 MI. (COMANCHE)						
		STP -269F (076)						
34106 (04)	7	ENHAN	0.450	0.00	628,154.00	0.00	157,038.00	785,192.00
STEPHENS		PEDESTRIAN / BIKE IMPROVEMENTS CITY OF COMANCHE: SIDEWALKS, CURB AND GUTTER, TRAFFIC CONTROL, CROSSWALKS ALONG SH-53					(A)	
		TAP -269F (079)						
33316 (04)	8	SH051	0.000	0.00	960,000.00	0.00	240,000.00	1,200,000.00
TULSA		ILLUMINATION TULSA: HIGHWAY LIGHTING FROM PEORIA AVE TO COLUMBIA ON BA EXPRESSWAY					(A)	
		NHPP -272N (325)						
23170 (11)	8	US075	0.060	0.00	62,500.00	0.00	62,500.00	125,000.00
WASHINGTON		SAFETY IMPROVEMENT US-75: RIGHT TURN LANE FROM TURKEY CREEK BRIDGE NORTH TO EASTLAND PARKWAY					(A)	
		NHPP -014N (102)						

JobPiece	CD	Highway	MILES	Adv Con	Federal	State	Other	Total
42 PROJECTS			GRAND-TOTALS	0.00	41,082,374.29	38,878,547.89	10,110,009.00	90,070,931.18

OTHER FUNDING CATEGORIES:

- (A) LOCAL /CITY MATCHING FUNDS
- (B) CO. IMPROVE. ROAD & BRIDGE
- (C) OTHER PLACE HOLDER

PREPARED BY PROGRAMS DIVISION



JobPiece	CD	Highway	MILES	Adv Con	Federal	State	Other	Total
28830 (04)	5	ENHAN	0.000	0.00	437,548.65	0.00	109,387.16 (A)	546,935.81
BLAINE		ENHANCEMENT ROMAN NOSE STATE PARK LODGE TRAIL & SCENIC OVERLOOK						
		STP -106E (125)	EH					
33009 (04)	5	ENHAN	0.000	0.00	737,247.98	0.00	184,312.00 (A)	921,559.98
BLAINE		PEDESTRIAN / BIKE IMPROVEMENTS OTR: ROMAN NOSE MULTI-USE TRAIL PHASE 3						
		TAP -206E (058)	TP					
33010 (04)	5	ENHAN	0.000	0.00	235,486.80	0.00	58,871.70 (A)	294,358.50
BLAINE		PEDESTRIAN / BIKE IMPROVEMENTS OTR: ROMAN NOSE BOARDWALK TRAIL PHASE 2						
		TAP -206E (059)	TP					
33680 (04)	7	CT ST	1.750	0.00	480,000.00	0.00	120,000.00 (B)	600,000.00
CADDO		RESURFACE ANADARKO: PETREE ROAD -FROM SW 6TH ST EXTENDING EAST TO SE 7TH (MILL, OVERLAY AND BRIDGE WIDENING)						
		STP -208B (097)	CI					
20266 (11)	3	SH009	3.000	0.00	17,459,620.40	0.00	0.00	17,459,620.40
CLEVELAND		GRADE, DRAIN, BRIDGE & SURFACE SH-9: FROM 72ND AVE EAST, EAST TO 108TH AVE EAST IN NORMAN (INCLUDES BRIDGE OVER UNNAMED CREEK)						
		STP -214B (103)	PM					
31122 (04)	7	COBRGE	0.070	0.00	369,978.00	0.00	882,522.00 (B)	1,252,500.00
COMANCHE		BRIDGE & APPROACHES BRIDGE AND APPROACHES (EW-154) OVER NINEMILE BEAVER CREEK, 2.2 MILES EAST OF ELGIN						
		STP -216D (091)	CI					
29402 (04)	8	CO RD	0.600	0.00	203,000.00	0.00	1,497,000.00 (B)	1,700,000.00
CRAIG		BRIDGE & APPROACHES CO BR (BR30) OVER LITTLE CABIN CREEK 1.5 MI NORTH OF BLUEJACKET						
		CIRB -218C (082)	RB					
34415 (04)	7	US277	4.420	0.00	0.00	1,261,000.00	0.00	1,261,000.00
GRADY		RESURFACE US-277: FROM I-44, EAST 4.42 MILE TO SH-81						
		SSR -226C (094)	SR					
31321 (04)	3	SH199	5.790	0.00	0.00	1,090,400.00	0.00	1,090,400.00
JOHNSTON		RESURFACE SH-199: BEGIN AT CARTER C/L EXTEND EAST 5.8 MILES						
		SSR -235B (057)	SR					
33858 (04)	2	US059	10.520	0.00	0.00	800,000.00	0.00	800,000.00
LEFLORE		RESURFACE US-59: BEGIN AT JCT US-59/US-259, EXT NORTH 10.52 MI						
		SSR -240N (085)	SR					
33334 (04)	3	SH102	5.000	0.00	0.00	900,000.00	0.00	900,000.00
LINCOLN		RESURFACE SH-102: BEGIN 2.0 MI NORTH OF SH-62 JCT, EXTEND NORTH 7.0 MI						
		SSR -241C (075)	SR					
32708 (04)	7	IS035	2.000	0.00	0.00	500,000.00	0.00	500,000.00
LOVE		ENVIRONMENTAL MITIGATION I-35: CONSTRUCTION OF KIOSK AT THE REST AREA ON I-35 FOR MITIGATION OF JEFFERSON COUNTY SH 79 RED RIVER BRIDGE REPLACEMENT						
		SSP -3500 (102)	PM					
33402 (04)	6	US281	4.300	0.00	0.00	700,000.00	0.00	700,000.00
MAJOR		RESURFACE US-281: BEGIN 4.3 MILES SOUTH OG JCT US-412 EXTEND NORTH 4.3 MILES.						
		SSR -247B (034)	SR					
33404 (04)	6	US412	6.800	0.00	0.00	1,800,000.00	0.00	1,800,000.00
MAJOR		RESURFACE US-412: BEGIN 9.3 MILES WEST OF JCT. US-60 EXTEND EAST 6.8 MILES						
		SSR -247N (035)	SR					

Job/Piece	CD	Highway	MILES	Adv Con	Federal	State	Other	Total
31889 (04)	7	SH007	0.200	0.00	3,437,177.20	0.00	0.00	3,437,177.20
MURRAY		BRIDGE & APPROACHES SH 7: WESTBOUND BRIDGE OVER GUY SANDY CREEK 4.9 MIS. E. OF US 77						
		NHPP	-250N (031)	PM				
30651 (05)	1		0.000	0.00	0.00	29,486.00	0.00	29,486.00
MUSKOGEE		BRIDGE WATER PROOF SEAL DIVISION 1 BRIDGE WATER PROOF SEAL						
		SSP	-251F (102)	PM				
33426 (04)	4	US064	7.490	0.00	0.00	3,066,140.00	0.00	3,066,140.00
NOBLE		RESURFACE US-64: FROM GARFIELD C/L EAST TO I-35						
		SSR	-252N (061)	SR				
33862 (04)	4	IS035	7.220	0.00	4,764,496.00	1,191,124.00	0.00	5,955,620.00
NOBLE		RESURFACE I-35: FROM 0.35 MILES SOUTH OF US-77, EXTEND NORTH 7.22 MILES (MM 185 TO MM 192)						
		NHPPI	-3500- (111)	PM				
34651 (04)	4		0.000	0.00	1,600,000.00	400,000.00	0.00	2,000,000.00
OKLAHOMA		ITS CONSTRUCTION DYNAMIC MESSAGE SIGN INSTALLATION FOR I-35 NB AND SB AT MID POINTS & QUARTER POINTS (MULTIPLE LOCATIONS IN DISTRICT 3, 4, 7)						
		NHPPI	-3500- (105)	IT				
34652 (04)	4		0.000	0.00	1,600,000.00	400,000.00	0.00	2,000,000.00
OKLAHOMA		ITS CONSTRUCTION DYNAMIC MESSAGE SIGN INSTALLATION FOR I-40 EB AND WB AT MID POINTS & QUARTER POINTS (MULTIPLE LOCATIONS IN DISTRICTS 1, 3 & 5)						
		NHPPI	-4000- (118)	IT				
34830 (04)	4	IS035	5.120	0.00	4,749,698.00	0.00	0.00	4,749,698.00
OKLAHOMA		RESURFACE RESURFACE: I-35 FROM SH-66 EXTEND NORTHWARD TO WATERLOO ROAD						
		NHPPI	-3500- (108)	PM				
29689 (04)	8	SH125	0.770	0.00	6,999,908.00	0.00	0.00	6,999,908.00
OTTAWA		GRADE, DRAIN, BRIDGE & SURFACE SH-125 OVER I-44: (WILL ROGERS TURNPIKE), 6.8 MILES NORTH OF US-60						
		STP	-258B (079)	PM				
29246 (04)	2	US270	0.100	0.00	3,032,000.68	0.00	0.00	3,032,000.68
PITTSBURG		BRIDGE REHABILITATION US-270 OVER BLUE CREEK 12.4 MILES SE OF JCT US-69B						
		STP	-261B (103)	PM				
23286 (07)	3	SH099	2.000	0.00	2,305,143.09	2,305,142.06	0.00	4,610,285.15
PONTOTOC		WIDEN & RESURFACE SH-99: FROM 3.5 MI NORTH OF SH-99A, NORTH 2.0 MI						
		SSP	-162B (192)	SS				
33373 (04)	8	US169	1.620	0.00	0.00	500,000.00	0.00	500,000.00
ROGERS		RESURFACE US-169: FROM 5.74 MI NORTH OF TULSA C/L, EXTEND NORTH 1.62 MI						
		SSR	-030N (073)	SR				
33379 (04)	8	SH088	4.700	0.00	0.00	800,000.00	0.00	800,000.00
ROGERS		RESURFACE SH-88: FROM 4.71 MI SOUTH OF US-169, EXTEND NORTH 4.71 MI						
		SSR	-266C (092)	SR				
33380 (04)	8	SH088	7.180	0.00	0.00	1,230,000.00	0.00	1,230,000.00
ROGERS		RESURFACE SH-88: FROM SH-20, EXTEND NORTH 7.18 MI						
		SSR	-266C (093)	SR				
34222 (04)	8	SH020	1.440	0.00	5,989,000.00	0.00	0.00	5,989,000.00
ROGERS		PAVEMENT REHABILITATION SH-20: FROM SH-66 EXTEND EAST APPROX 1.44 MILES						
		STP	-266N (094)	PM				

JobPiece	CD	Highway	MILES	Adv Con	Federal	State	Other	Total
29779 (04)	1	SH101	0.350	0.00	1,221,486.01	305,371.50	0.00	1,526,857.51
SEQUOYAH		BRIDGE & APPROACHES SH-101: OVER CEDAR CREEK, 4.92 MILES EAST OF US-59 JCT						
	STP	-268C	(078)	PM				
33901 (04)	6	SH003	0.040	0.00	0.00	650,000.00	0.00	650,000.00
TEXAS		BRIDGE REHABILITATION SH-3 OVER CHIQUITA CREEK, 27. MI. W. OF BEAVER C/L						
	SBR	-017N	(260)	SB				
34395 (04)	5	US183	9.300	0.00	0.00	6,000,000.00	0.00	6,000,000.00
TILLMAN		RESURFACE US-183 BEGIN 0.15 MI. S. OF US-183/SH-5C JCT., EXTEND N. 9.3 MI.						
	SSR	-271B	(070)	SR				
28656 (04)	8	CT ST	0.250	0.00	400,000.00	0.00	100,000.00 (A)	500,000.00
TULSA		INTERSECTION MOD. & TRAF. SIGNALS INTERSECTION MOD & TRAFFIC SIGNALS @ 121ST & MINGO ROAD IN BIXBY						
	STP	-172B	(533)	IG				
33447 (04)	1	SH051	1.680	0.00	0.00	950,000.00	0.00	950,000.00
WAGONER		RESURFACE SH-51: BEGIN 12.91 MI EAST OF SH-72 JCT, EXTEND EAST 1.52 MI						
	SSR	-273B	(065)	SR				
29449 (04)	6	SH034	0.100	0.00	1,060,000.00	4,240,000.00	0.00	5,300,000.00
WOODWARD		BRIDGE & APPROACHES SH-34 OVER NORTH CANADIAN RV., 0.8 MILES NORTH OF JCT. US-183						
	STP	-277B	(049)	PM				
34 PROJECTS			GRAND-TOTALS	0.00	57,081,790.81	29,118,663.56	2,952,092.86	89,152,547.23

OTHER FUNDING CATEGORIES:  
 (A) LOCAL /CITY MATCHING FUNDS  
 (B) CO. IMPROVE. ROAD & BRIDGE  
 PREPARED BY PROGRAMS DIVISION

Job/Piece	CD	Highway	MILES	Adv Con	Federal	State	Other	Total
28704 (04)	5	CO RD	0.600	0.00	0.00	0.00	5,000,000.00 (A)	5,000,000.00
BLAINE		GRADE, DRAIN & SURFACE GRADE & SURFACE CO RD EW-94 (MC06-30C & 06-40C) FR NS-257 EXTEND W 5 MI THEN S 1 MI TO AMERICAN HORSE LAKE CIRB -206F (036) RB						
24094 (04)	7	SH009	5.740	0.00	5,288,121.35	10,604,905.33	0.00	15,893,026.68
CADDO		GRADE, DRAIN, BRIDGE & SURFACE SH-9: RECONSTRUCT ON OFFSET AND EXISTING ALIGN. FROM 5.64 MI WEST OF US-62 EXT EAST 5.74 MILES THRU US-62 INTERSECTION. STP -108B (166) SS						
31365 (04)	4	US081	4.800	0.00	4,553,960.00	0.00	0.00	4,553,960.00
CANADIAN		RESURFACE US-81 FROM RR BRIDGE NORTH OF EL RENO, NORTH 4.79 MILES TO 0.15 MILE NORTH OF MEMORIAL RD. NHPP -011N (113) 3P						
31366 (04)	4	US281	4.400	0.00	1,070,030.00	0.00	0.00	1,070,030.00
CANADIAN		RESURFACE US-281 SPUR FROM 300 FEET NORTH OF THE JUNCTION OF US-281, SOUTHEAST 4.21 MILES NHPP -209N (082) 3P						
32945 (04)	7	US070A	0.350	0.00	160,000.00	0.00	0.00	160,000.00
CARTER		A.D.A. PROJECTS FOR COMPLIANCE US-70A: FROM JCT. SH-76S/US-70A EAST.35 MI. TO HEWITT ST. (WILSON) STP -210C (075) AD						
33455 (04)	7	US177	5.880	0.00	1,422,153.00	0.00	0.00	1,422,153.00
CARTER		RESURFACE US-177: SH-199 NORTH TO KEMP CREEK APPROX. 1.5 MILES SOUTH OF SH-53 STP -210B (078) 3P						
33407 (04)	6	US287	6.890	0.00	1,800,000.00	0.00	0.00	1,800,000.00
CIMARRON		RESURFACE US-287: FROM 7 MILES NORTH OF TEXAS STATE LINE, EXTEND NORTH 6.84 MILES NHPP -032N (007) 3P						
17020 (08)	4	CT ST	0.510	0.00	1,000,000.00	0.00	200,000.00 (B)	1,200,000.00
GARFIELD		GRADE, DRAIN & SURFACE ENID: N.CLEVELAND ST FROM WILLOW RD SOUTH 1/2 MILE TO S. SIDE OF RR TRACKS STP -224C (069) UR						
20970 (08)	3	IS035	3.210	0.00	20,794,586.04	0.00	0.00	20,794,586.04
GARVIN		GRADE, DRAIN & SURFACE I-35: FROM SH-19, NORTH 3.21 MI NHPP -3500- (086) PM						
32944 (04)	7	SH032	0.500	0.00	150,000.00	0.00	0.00	150,000.00
JEFFERSON		A.D.A. PROJECTS FOR COMPLIANCE SH-32: A.D.A. FROM US-81, EXT. EAST 0.50 MILES (RYAN) STP -234C (052) AD						
26368 (04)	4	US077	4.720	0.00	1,849,828.50	462,457.02	0.00	2,312,285.52
KAY		SHOULDER IMPROVEMENT US 77: FROM THE SH 11W JCT. N. APPROX. 4.72 MILES TO SOUTH ST. IN NEWKIRK (SOUTHBOUND ONLY) STP -236B (054) SS						
31980 (04)	4	COBRGE	0.040	0.00	800,000.00	0.00	200,000.00 (A)	1,000,000.00
KAY		BRIDGE & APPROACHES BRIDGE AND APPROACHES ON EW-23 OVER DEER CREEK, 0.5 MILES WEST, 1.0 MILES SOUTH AND 0.3 MILES WEST OF JCT. I-35/US-60 CN 135 STP -236D (086) CI						
33340 (04)	3	SH018	6.280	0.00	1,190,625.00	0.00	0.00	1,190,625.00
LINCOLN		RESURFACE SH-18: FROM SH-62 JCT, EXTEND NORTH 6.28 MI STP -241C (071) 3P						
33341 (04)	3	SH018	6.980	0.00	1,321,875.00	0.00	0.00	1,321,875.00
LINCOLN		RESURFACE SH-18: BEGIN 6.35 MI NORTH OF SH-62 JCT, EXTEND NORTH 6.98 MI STP -241C (076) 3P						

Job/Piece	CD	Highway	MILES	Adv Con	Federal	State	Other	Total
29459 (04)	3	SH059	0.020	0.00	3,060,228.48	765,056.60	0.00	3,825,285.08
MCCLAIN		GRADE, DRAIN, BRIDGE & SURFACE SH-59 OVER CRINER CREEK, 5.03 MI SOUTH OF SH-39						
		STP -244C (072)	PM					
33392 (04)	2	US259	5.230	0.00	2,800,000.00	0.00	0.00	2,800,000.00
MCCURTAIN		RESURFACE US-259/US-70: BEGIN 0.07 NORTH OF US-70/US-259/SH-3 JCT. AND EXTEND NORTH 5.24 MI						
		NHPP -016N (014)	3P					
34268 (04)	2	US070	2.400	0.00	1,000,000.00	0.00	0.00	1,000,000.00
MCCURTAIN		RESURFACE US-259/US-70: BEGIN 5.31 MI NORTH OF US-70/US-259/SH-3 JCT, EXTEND NORTH 2.40 MI WITH EXCEPTION						
		NHPP -016N (015)	3P					
31072 (04)	8	SH010	0.200	0.00	0.00	1,013,400.00	0.00	1,013,400.00
NOWATA		BRIDGE REHABILITATION SH 10 REHAB BRIDGE OVER VERDIGRIS RIVER, 10.6 MI W CRAIG CO						
		SBR -253C (059)	SB					
29860 (04)	4	US177	1.000	0.00	6,199,448.46	6,199,448.46	0.00	12,398,896.92
PAYNE		WIDEN & RESURFACE US-177: FROM SH-51 NORTH 3 MILES TO LAKEVIEW ROAD IN STILLWATER. INCLUDES WIDENING FOR FIVE LANE SECTION FROM MCELROY TO LAKEVIEW						
		STP -260B (056)	PM					
24331 (04)	2	SH031	2.300	0.00	4,435,760.50	4,435,760.50	0.00	8,871,521.00
PITTSBURG		GRADE, DRAIN, BRIDGE & SURFACE SH-31 FROM 1.13 MI EAST OF MCALESTER, EAST 2.30 MI						
		STP -161C (205)	SS					
23285 (12)	3		0.000	0.00	261,600.00	65,400.00	0.00	327,000.00
PONTOTOC		JOINT SEAL/REPAIR DIVISION 3: BRIDGE JOINT SEAL/REPAIR PROJECTS						
		STP -262C (064)	PM					
33370 (04)	8	US412	4.950	0.00	2,150,000.00	0.00	0.00	2,150,000.00
ROGERS		RESURFACE US-412: FROM 5.47 MI WEST OF THE JCT WITH SH-88, EXTEND EAST 4.95 MI EB & WB						
		NHPP -019N (144)	3P					
33833 (04)	1	SH010	2.840	0.00	1,050,000.00	0.00	0.00	1,050,000.00
SEQUOYAH		RESURFACE SH-10: BEGIN 1.30 MI NORTH OF I-40 JCT, EXT NORTH 2.84 MI TO SH-100 JCT						
		STP -268C (074)	3P					
33454 (04)	7	SH007	7.990	0.00	3,175,161.00	0.00	0.00	3,175,161.00
STEPHENS		RESURFACE SH-7: FROM MM 7.62 EXTEND EAST 7.99 MILES						
		NHPP -269N (077)	3P					
28899 (04)	8	IS444	1.150	0.00	18,827,215.44	0.00	0.00	18,827,215.44
TULSA		PAVEMENT REHABILITATION I-444 FROM SH 51 INTERCHANGE NORTH TO INDEPENDENCE (EAST LEG OF IDL)						
		NHPPI -4440- (009)	PM					
32729 (04)	8	US075	0.020	0.00	0.00	750,000.00	0.00	750,000.00
TULSA		BRIDGE REHABILITATION US-75: BRIDGE REHAB OVER APACHE AVE, 2.8 MI NORTH OF JCT. I-244 NB						
		SBR -014N (111)	SB					
32735 (04)	8	US075	0.200	0.00	0.00	500,000.00	0.00	500,000.00
TULSA		BRIDGE REHABILITATION US-75: ARCHER ST; BRIDGE REHAB OVER US-75, 2.8 MI NORTH OF JCT I-244						
		SBR -014N (112)	SB					
34312 (04)	8	IS244	1.000	0.00	0.00	500,000.00	0.00	500,000.00
TULSA		BRIDGE REHABILITATION I-244 EB MINGO CRK						
		SBR -2440 (032)	SB					

JobPiece	CD	Highway	MILES	Adv Con	Federal	State	Other	Total
28 PROJECTS			GRAND-TOTALS	0.00	84,360,592.77	25,296,427.91	5,400,000.00	115,057,020.68

OTHER FUNDING CATEGORIES:

- (A) CO. IMPROVE. ROAD & BRIDGE
- (B) LOCAL /CITY MATCHING FUNDS

PREPARED BY PROGRAMS DIVISION

**FOR PRESENTATION AT THE COMMISSION MEETING ON NOVEMBER 2, 2020**

**AGENDA ITEM: 143**

**SUBJECT: Settlement for Damages to State Property**

On October 10, 2019, Forest Banks was traveling eastbound on SH-9 near County Road EW3640 in Seminole County. Mr. Banks struck an automobile which in turn struck an ODOT brushhog. This accident resulted in cost to repair the equipment of \$1,831.56.

Mr. Banks was insured with GEICO with a policy limit of \$25,000. Total damages exceeded the policy limit. GEICO is offering a pro-rata settlement to all parties. ODOT's share of the prorated settlement is \$1,252.63 leaving a balance of \$578.93, which is not economically feasible to pursue. The balance is uncollectible.

Title 69, Section 1002 of the Oklahoma Statutes provides the Transportation Commission with the authority to settle claims which it may have against any person for damages to facilities belonging to the Department.

**The Department recommends and requests acceptance of these settlement offers and recognition of the uncollectible balances writeoff.**

**FOR PRESENTATION AT THE COMMISSION MEETING OF NOVEMBER 2, 2020**

**AGENDA ITEM: 144**

**SUBJECT: FY2021 Budget Revisions**

- a) Request to increase the federal share of Capital Outlays for the carryover of federal revenue:

Federal Aid Construction	\$ 104,400,000
Federal Aid City Projects	39,300,000
County Program	<u>15,900,000</u>
Total	\$ 159,600,000

- b) Request to increase the state share of Capital Outlays for carryover of state funding:

Engineering Contracts	\$21,300,000
Right of Way	7,450,000
Federal Aid Construction	83,550,000
State Aid Construction	17,550,000
Asset Preservation	<u>3,867,000</u>
Total	\$133,717,000

- c) Request to increase the Maintenance Program by \$11,071,110 for carryover of state funding.
- d) Request to re-budget prior year reserves of \$90,000,000 into SFY2021 for existing Right of Way/Utilities projects.
- e) Request to increase County Improvement for Roads and Bridges by \$25,065,062 for carryover of CIRB funds.



**FOR PRESENTATION AT THE NOVEMBER 2, 2020 COMMISSION MEETING**

**AGENDA ITEM NO: 146**

**SUBJECT: Special Crossing Permit Request for Industrial Use**

**LOCATION: District II, Junction of US-70 Bypass and Fabral Road in Idabel, Oklahoma in McCurtain County**

In accordance with the provisions of the Oklahoma Administrative Code, 730:30-9-8, the Department has received a request for a special crossing permit from SETCO, Inc. at the referenced location. The request is seeking Commission approval to locate, construct, and maintain a heavy load crossing for temporary usage at the intersection of US-70 Bypass and Fabral Road in the vicinity of the McCurtain County Regional Airport and SETCO, Inc. The heavy load crossing is necessary to support limited term hauling operations and facilitate the transport of aggregate across the highway via heavy trucks that are not suitable for regular road use. The Department has met with SETCO, Inc. and determined that no acceptable alternatives are available to move the material.

SETCO, Inc. has provided the required plans, specifications, and details necessary to construct the crossing. The Department has reviewed the proposal and determined that the crossing represents an adequate improvement to support the transport vehicles and to protect the structural integrity of the highway. A traffic control plan will be submitted by SETCO, Inc. to the Department for review and approval prior to construction and will be in conformance with the Manual on Uniform Traffic Control Devices (MUTCD) and adequate to protect the safety of the traveling public.

If the request is approved by the Transportation Commission, the Department will prepare and enter into an agreement with the requesting party to set forth the exact design, construction, maintenance requirements, time and other usage limitations, indemnifications, and to fully describe the expectations of SETCO, Inc. SETCO Inc. will be required to construct the crossing in accordance with the approved plans, specifications, and details, and the Department will provide construction oversight.

Upon completion of the crossing, the Department will authorize the Commissioner of the Department of Public Safety (DPS) to issue permits for specific vehicles to cross the highway at the location. Each individual permit will include a serial or vehicle identification number associated with each specific heavy truck to be utilizing the crossing, describe the physical characteristics of the vehicles, and set forth any other provisions or restrictions as determined necessary.

The Department recommends approval to proceed with the preparation and execution of the agreement to facilitate the crossing construction and, upon acceptance of the work, approval to submit the subsequent authorization of permit issuance to DPS.

