

Limits of No Access

Existing Right-of-Way

Requested Area

Easement

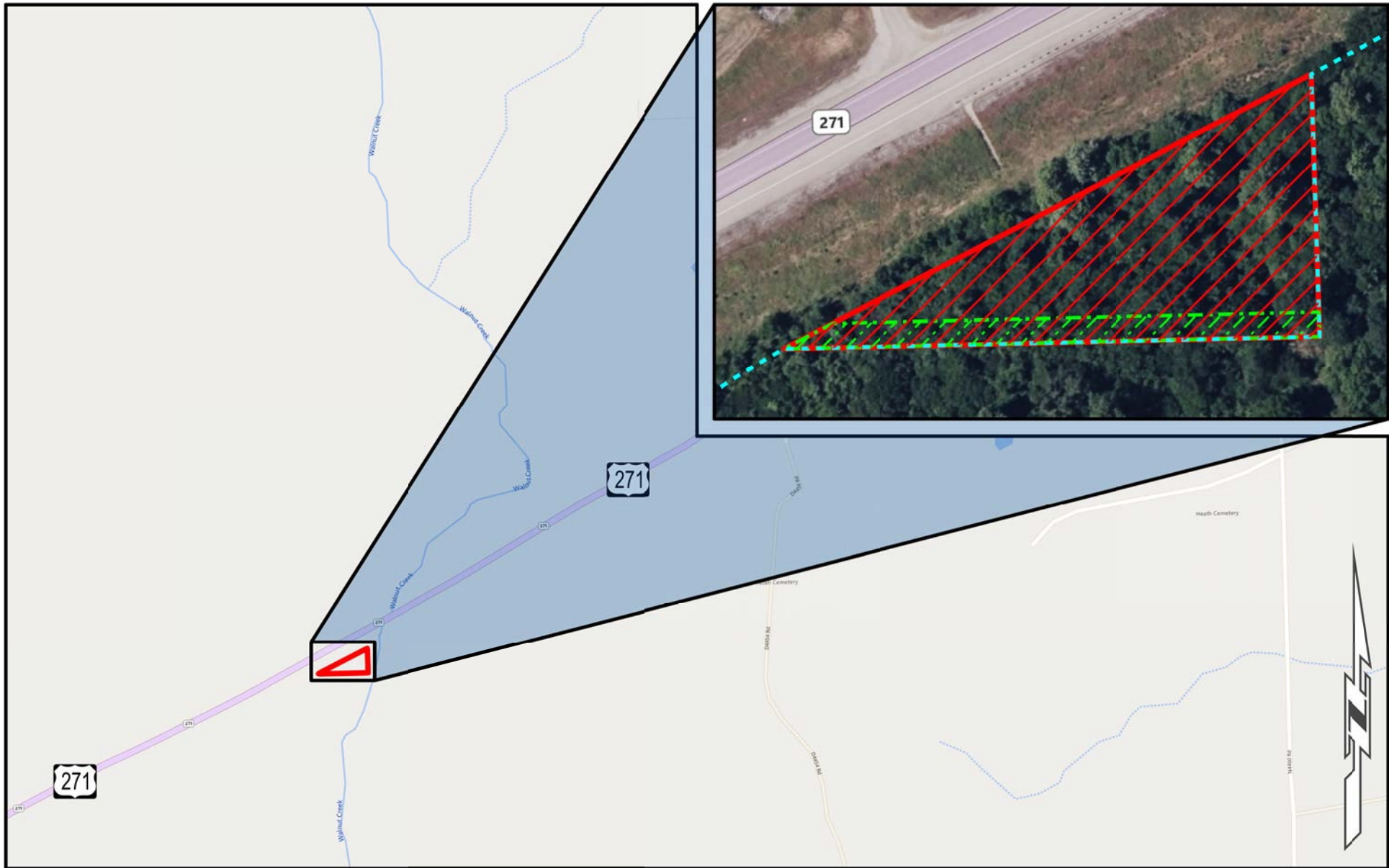


**OKLAHOMA**  
Transportation

# SURPLUS LOCATION MAP

US-271 | 23201(05) | Pushmataha County

Part of Parcel(s):	03
Price:	\$4,600.00
Size:	≈ 0.73 ac. (31,902.03 sq. ft.)



Limits of No Access
Existing Right-of-Way
Requested Area
Easement


**OKLAHOMA**  
 Transportation

# SURPLUS LOCATION MAP

US-271 | 23201(05) | Pushmataha County

<b>Part of Parcel(s):</b>	03
<b>Price:</b>	\$4,600.00
<b>Size:</b>	≈ 0.73 ac. (31,902.03 sq. ft.)