

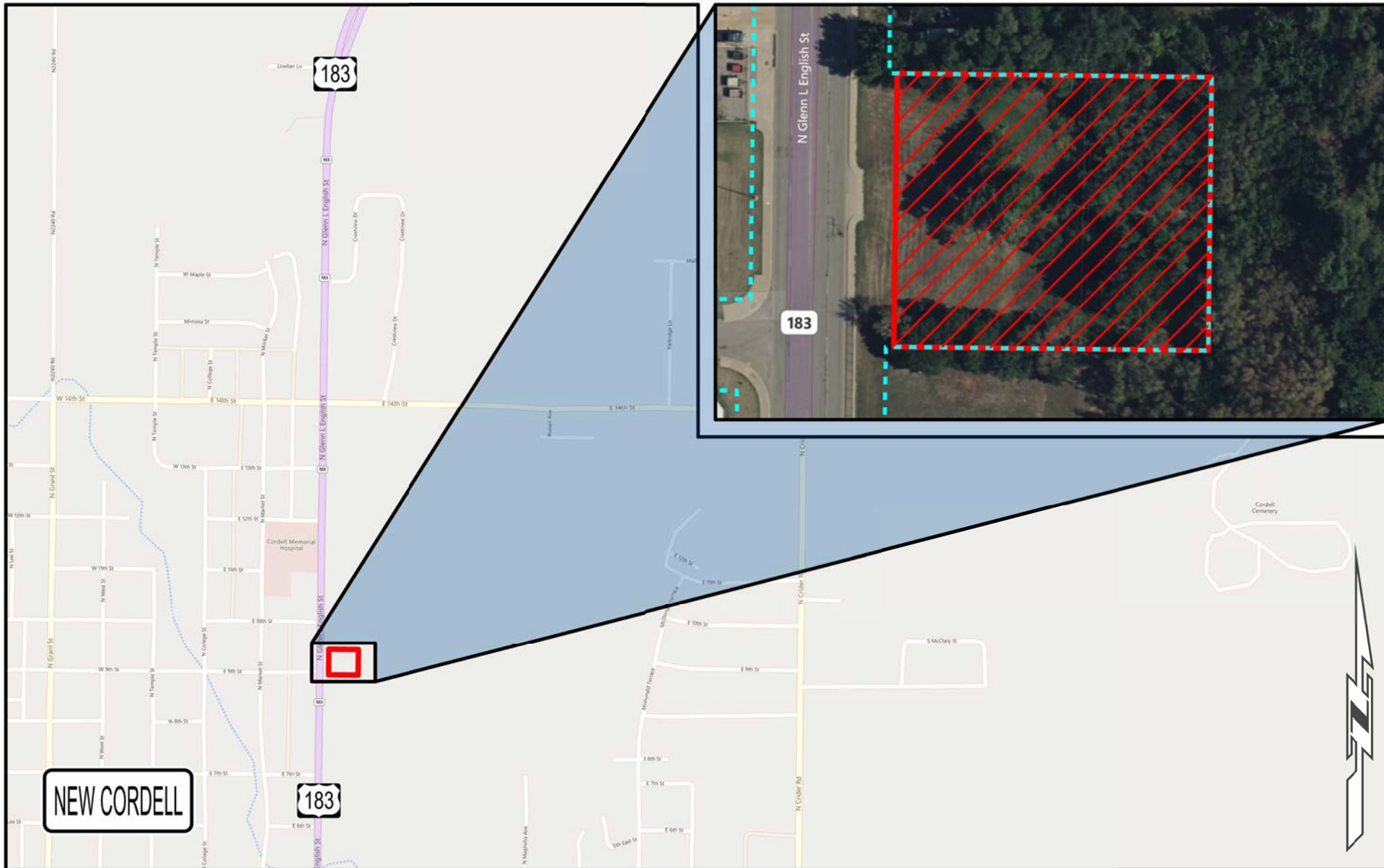
Limits of No Access
Existing Right-of-Way
Requested Area
Easement


**OKLAHOMA**  
 Transportation

# SURPLUS LOCATION MAP

US-183 | 17126(09) | Washita County

<b>Part of Parcel(s):</b>	46
<b>Price:</b>	\$14,950.00
<b>Size:</b>	≈ 0.86 ac. (37,295.21 sq. ft.)



Limits of No Access
Existing Right-of-Way
Requested Area
Easement


**OKLAHOMA**  
 Transportation

# SURPLUS LOCATION MAP

US-183 | 17126(09) | Washita County

<b>Part of Parcel(s):</b>	46
<b>Price:</b>	\$14,950.00
<b>Size:</b>	≈ 0.86 ac. (37,295.21 sq. ft.)