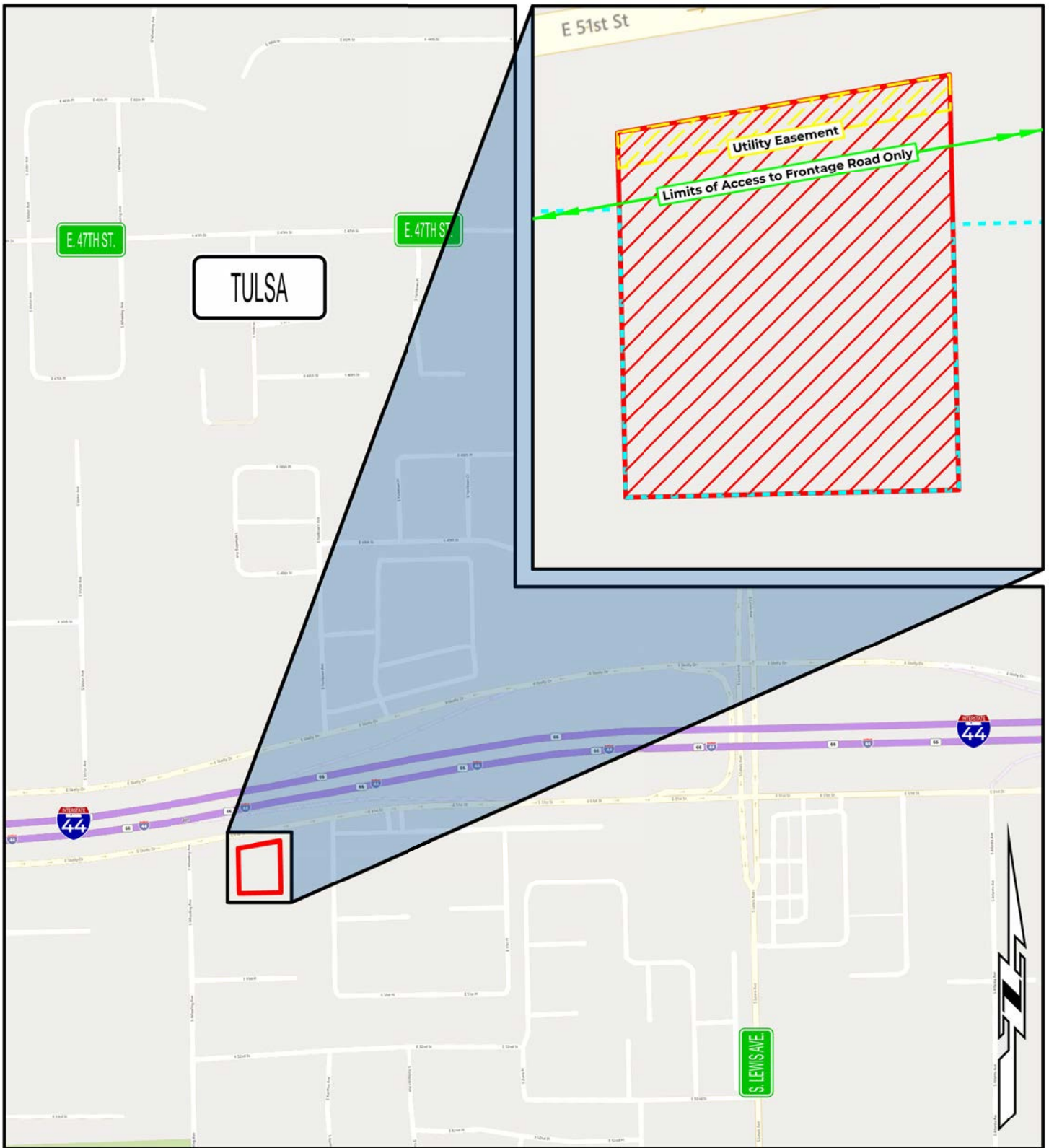



**OKLAHOMA** Transportation | I-44 | 06974(59) | Tulsa County
 

# SURPLUS LOCATION MAP

Limits of No Access	Requested Area
Existing Right-of-Way	Easement

<b>Part of Parcel(s):</b>	242
<b>Price:</b>	\$98,000.00
<b>Size:</b>	≈ 0.56 ac. (24,514.43 sq. ft.)




**OKLAHOMA** **SURPLUS LOCATION MAP**  
 Transportation | I-44 | 06974(59) | Tulsa County

Limits of No Access	Requested Area	<b>Part of Parcel(s):</b> 242 <b>Price:</b> \$98,000.00 <b>Size:</b> ≈ 0.56 ac. (24,514.43 sq. ft.)
Existing Right-of-Way	Easement	