



3500 Martin Luther King Ave. • P.O. Box 11357 • Oklahoma City, OK 73136-0357 • 405/425-3600 • Fax: 405/427-8246 • www.pikepass.com

September 25, 2017

The Honorable Elaine Chao
Secretary of Transportation
Office of the Secretary
U.S. Department of Transportation
1200 New Jersey Avenue, SE
Washington D.C. 20590

Re: Infrastructure for Rebuilding America (INFRA) funding for Interstate 40 / Douglas Interchange and related interstate widening in Oklahoma County.

Dear Secretary Chao:

The Oklahoma Turnpike Authority (OTA) is in full support of Oklahoma Department of Transportation's (ODOT) INFRA grant application. The proposed improvements to Interstate 40 are both necessary and urgent to provide for motorist safety and to meet strategic goals of both ODOT and OTA.

ODOT's proposed project will reconstruct I-40 and the Douglas interchange at Tinker Air Force Base and widen I-40 from four to six lanes from Douglas east to the I-240 interchange in Oklahoma County. The interchange and I-40 corridor improvements will increase safety and will add much needed capacity that will better facilitate traffic, improve freight movement and add access to Tinker AFB, Oklahoma's largest employer and key economic driver for the region. This project is part of a corridor improvement to increase the capacity of I-40 from Tinker AFB to the proposed turnpike reliever route connection as shown in Attachment #1.

On October 29, 2015, the Oklahoma Governor Mary Fallin announced six construction improvement projects to be financed and constructed by OTA to ensure safe travel, improve mobility, and relieve congestion. One of these projects, the new 21-mile Eastern Oklahoma County Turnpike, will increase connectivity between I-40 and I-44 (Turner Turnpike) and reduce congestion on I-35 as shown on the two attached aerials. With the increase of connectivity, some traffic currently using I-35 will choose to use the new turnpike and the proposed I-40 section instead. See Attachment #2, Eastern Oklahoma County Turnpike.

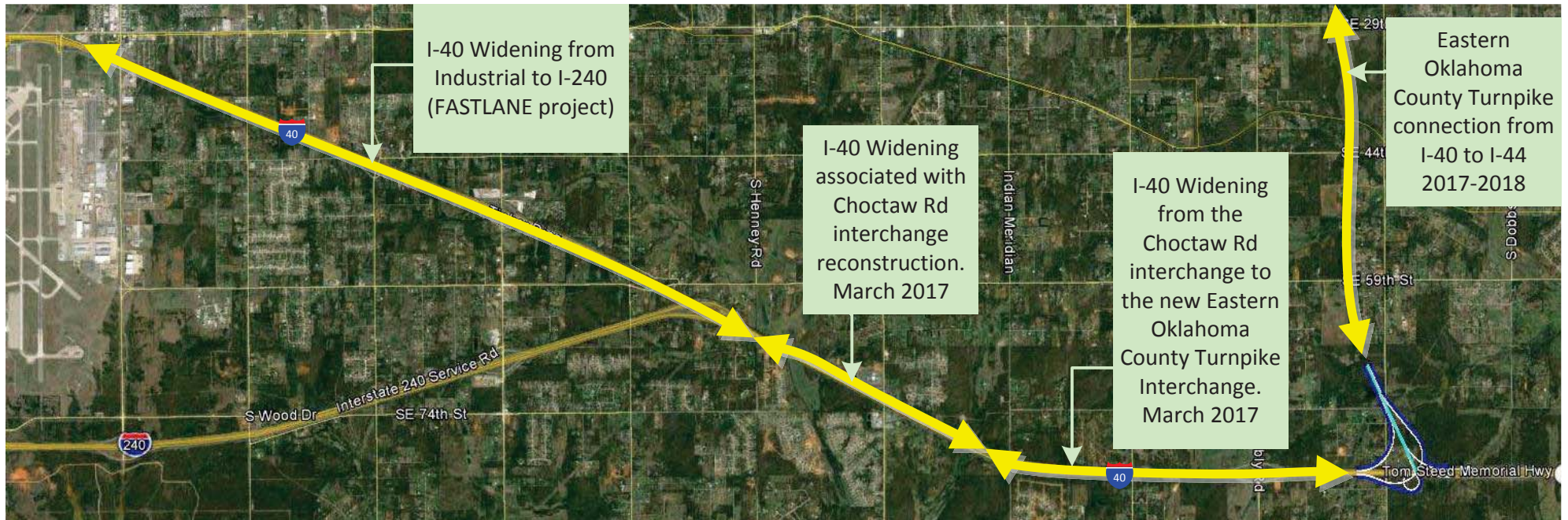
OTA believes this proposed project supports a network that is critical to Oklahoma's economy, the nation, and the national defense highway system. We strongly urge your support of full funding for the project. Thank you for your consideration and please feel free to call on us should you have questions or if you require additional information.

Sincerely,


Tim J. Gatz
Executive Director

xc: Oklahoma Secretary of Transportation

Attachment #1, I-40 Corridor Improvements



Attachment #2, Eastern Oklahoma County Turnpike

