

ID	%	Task Name	Duration	Start	Finish	2012				2013				2014				2015				
						Qtr 4	Qtr 1	Qtr 2	Qtr 3	Qtr 4	Qtr 1	Qtr 2	Qtr 3	Qtr 4	Qtr 1	Qtr 2	Qtr 3	Qtr 4	Qtr 1	Qtr 2	Qtr 3	
1	100%	Contract Design Firms	450 days	Tue 11/1/11	Mon 7/22/13																	
2	100%	Finalize Project Scope	550 days	Tue 7/23/13	Mon 8/31/15																	
3	90%	Preliminary Alignment	300 days	Tue 9/1/15	Mon 10/24/16																	
4	60%	NEPA	400 days	Sun 11/1/15	Fri 5/12/17																	
5	10%	Execute Agreements with Midwest City, Oklahoma City and Tinker Air Force Base	200 days	Tue 10/25/16	Mon 7/31/17																	
6	80%	Finalize Functional Plans	100 days	Tue 10/25/16	Mon 3/13/17																	
7	10%	Right Of Way Acquisition	60 days	Tue 3/14/17	Mon 6/5/17																	
8	0%	Relocate Utilities	100 days	Mon 5/15/17	Fri 9/29/17																	
9	0%	STIP/TIP Approval	90 days	Mon 7/3/17	Fri 11/3/17																	
10	0%	Finalize Design Plans	150 days	Tue 3/14/17	Mon 10/9/17																	
11	0%	Submit PS&E	50 days	Tue 10/10/17	Mon 12/18/17																	
12	0%	Contracting for Construction	120 days	Tue 12/19/17	Mon 6/4/18																	
13	0%	Reconstruct Douglas Interchange	600 days	Tue 6/5/18	Mon 9/21/20																	

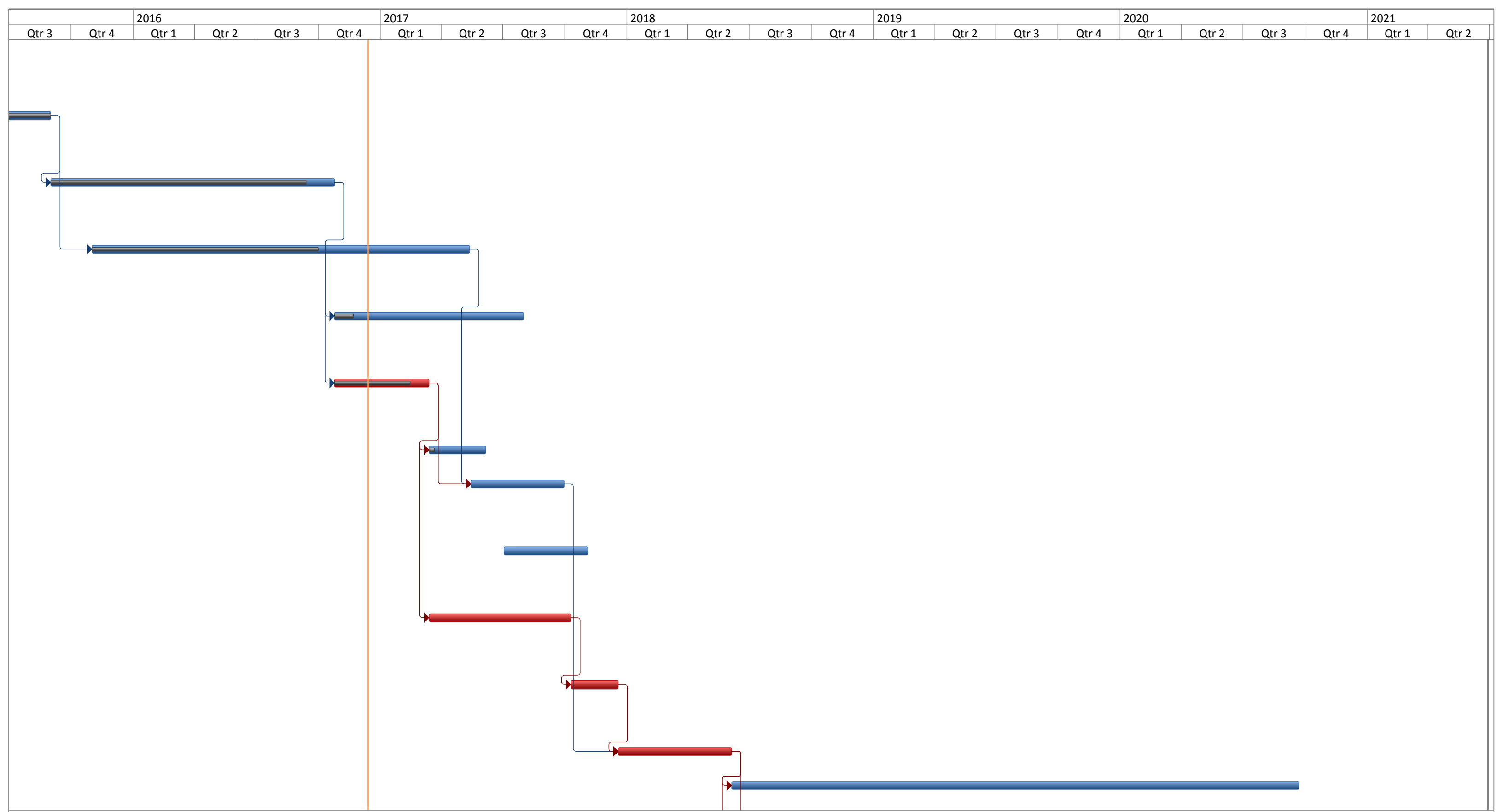
Project: 2016.12.14- CPM DO NOT
Date: Wed 12/14/16

Task		External Tasks		Manual Task		Finish-only		Slippage
Split		External Milestone		Duration-only		Deadline		
Milestone		Inactive Task		Manual Summary Rollup		Critical		
Summary		Inactive Milestone		Manual Summary		Critical Split		
Project Summary		Inactive Summary		Start-only		Progress		

ID	%	Task Name	Duration	Start	Finish	2012				2013				2014				2015				
						Qtr 4	Qtr 1	Qtr 2	Qtr 3	Qtr 4	Qtr 1	Qtr 2	Qtr 3	Qtr 4	Qtr 1	Qtr 2	Qtr 3	Qtr 4	Qtr 1	Qtr 2	Qtr 3	
14	0%	Raise Post Road	30 days	Tue 6/5/18	Mon 7/16/18																	
15	0%	Raise Westminster Road	30 days	Tue 7/17/18	Mon 8/27/18																	
16	0%	Construct center of new I-40 bridges over Anderson Road and I-240	150 days	Tue 6/5/18	Mon 12/31/18																	
17	0%	Build Inside Shoulder Eastbound for construction traffic	200 days	Tue 6/5/18	Mon 3/11/19																	
18	0%	Construct WB lanes on bridges over Anderson Road and I-240	120 days	Tue 3/12/19	Mon 8/26/19																	
19	0%	Reconstruct Westbound I-40	300 days	Tue 3/12/19	Mon 5/4/20																	
20	0%	Construct EB lanes on bridges over Anderson Road and I-240	120 days	Tue 5/5/20	Mon 10/19/20																	
21	0%	Reconstruct Eastbound Lanes	300 days	Tue 5/5/20	Mon 6/28/21																	

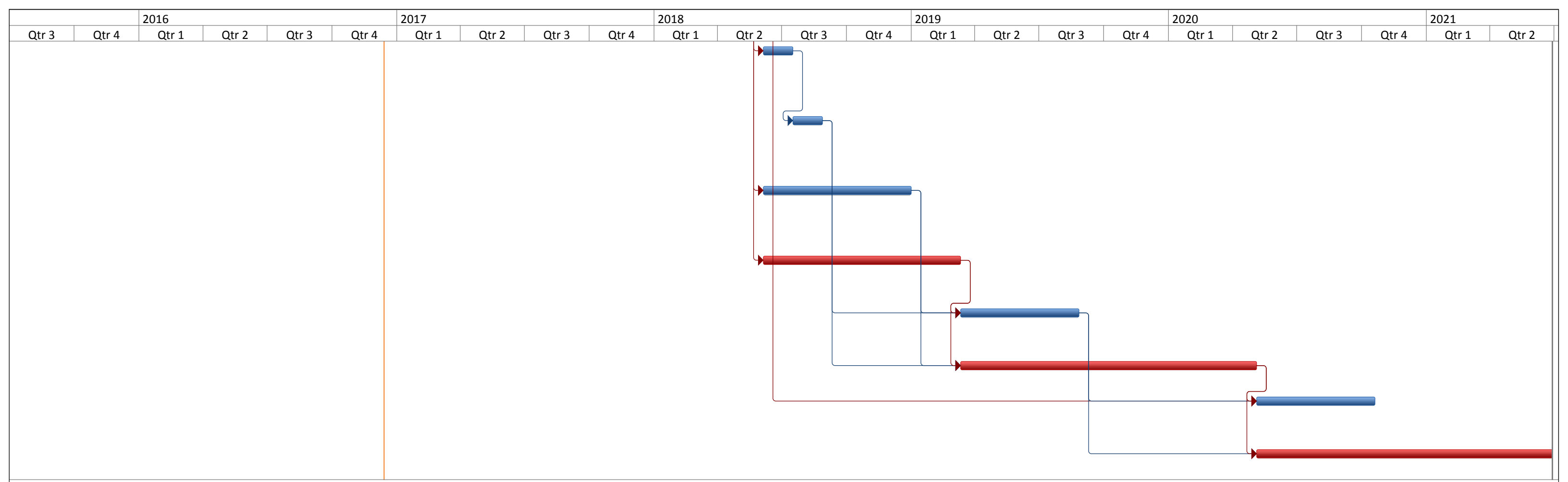
Project: 2016.12.14- CPM DO NOT
Date: Wed 12/14/16

Task		External Tasks		Manual Task		Finish-only		Slippage	
Split		External Milestone		Duration-only		Deadline			
Milestone		Inactive Task		Manual Summary Rollup		Critical			
Summary		Inactive Milestone		Manual Summary		Critical Split			
Project Summary		Inactive Summary		Start-only		Progress			



Project: 2016.12.14- CPM DO NOT
Date: Wed 12/14/16

Task		External Tasks		Manual Task		Finish-only		Slippage
Split		External Milestone		Duration-only		Deadline		
Milestone		Inactive Task		Manual Summary Rollup		Critical		
Summary		Inactive Milestone		Manual Summary		Critical Split		
Project Summary		Inactive Summary		Start-only		Progress		



Project: 2016.12.14- CPM DO NOT
Date: Wed 12/14/16

Task		External Tasks		Manual Task		Finish-only		Slippage	
Split		External Milestone		Duration-only		Deadline			
Milestone		Inactive Task		Manual Summary Rollup		Critical			
Summary		Inactive Milestone		Manual Summary		Critical Split			
Project Summary		Inactive Summary		Start-only		Progress			