

**VIRTUAL
PUBLIC MEETING**
June 5 - July 3, 2020

SH-82 North of Tahlequah
from South of N. Grand Ave. to Gideon
Cherokee County: JP 27101(04)(09)

www.odot.org/SH82



VIRTUAL PUBLIC MEETING

The Oklahoma Department of Transportation will host a virtual public meeting to present the latest information on the SH-82 project north of Tahlequah. This meeting will present the most recent design for the project and allow the public to submit input. Due to concerns over the spread of COVID-19, this will be a web-based format (no in-person meeting). The information will be available beginning June 5, 2020 and comments are requested by July 3, 2020.



Purpose

The purpose of this project is to improve safety and traffic flow within the SH-82 corridor. Since the project was last presented to the public in August 2017, ODOT has further developed the design of the project. In an effort to improve safety, ODOT has added roundabout intersections at three locations:

- SH-82 and N. Grand Avenue
- SH-82 and SH-51 Spur
- W. Jones Road and N. Jarvis Rd.

The public may view the entire project design on the virtual meeting website, including details about right-of-way acquisition and access, and more details about the proposed roundabouts.



Join

www.odot.org/SH82



OKLAHOMA
Transportation

June 2, 2020

Dear Stakeholders, Property Owners and Utility Owners:

Re: Cherokee County JP 27101(04) SH-82: Begin 1.4 Mi. N. of US-62/SH-51 Jct, Extend NW to SH-82/W. 710 Rd. Jct.
Cherokee County JP 27101(09) SH-82: Begin at SH-82/W. 710 Rd Jct, N. approx. 2.25 Mi. to Fourteen Mile Creek

The Oklahoma Department of Transportation (ODOT), in cooperation with the Federal Highway Administration (FHWA), is proposing reconstruction of SH-82 from south of Grand Avenue in Tahlequah, extending approximately 7 miles in total north and west to Gideon in Cherokee County. This segment of SH-82 has narrow shoulders, sharp curves and rolling terrain which result in inadequate sight distance to safely pass slow moving or turning vehicles. The purpose of the project is to improve safety and mobility in the SH-82 corridor, and to complete the 4-lane loop around Tahlequah.

ODOT presented the SH-82 project to the public on multiple occasions, beginning in 2013. An Environmental Assessment and Finding of No Significant Impact (EA/FONSI) for a preferred alternative were approved by the Federal Highway Administration (FHWA) in 2018. Since that time, ODOT has completed detailed environmental studies and advanced the design of the project on the preferred alternative.

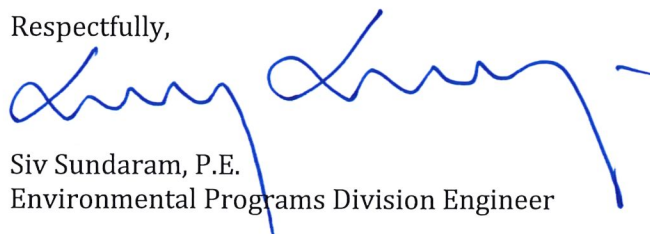
In an effort to improve safety, ODOT has added roundabout intersections at three locations:

- SH-82 and N. Grand Avenue
- SH-82 and SH-51 Spur
- W. Jones Road and N. Jarvis Rd.

The virtual public meeting will present the most recent design for the project and allow the public to submit input. Results of the detailed environmental studies conducted for the project will also be available. If you are leasing this property, please notify your lessee of our Public Meeting.

Should you have any questions regarding this project, please email environment@odot.org, or call 405-325-3269 and leave a detailed message.

Respectfully,



Siv Sundaram, P.E.
Environmental Programs Division Engineer

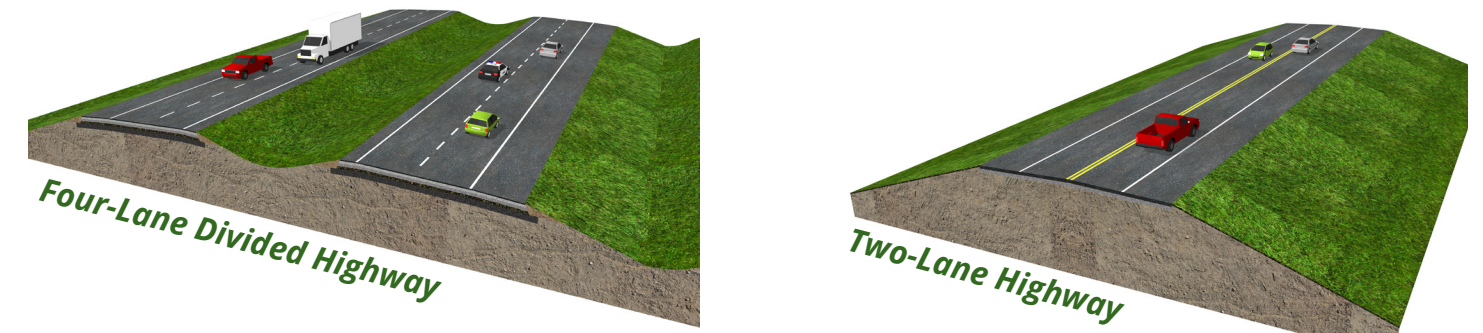
The Oklahoma Department of Transportation (ODOT) ensures that no person or groups of persons shall, on the grounds of race, color, sex, religion, national origin, age, disability, retaliation or genetic information, be excluded from participation in, be denied the benefits of, or be otherwise subjected to discrimination under any and all programs, services, or activities administered by ODOT, its recipients, sub-recipients, and contractors. To request an accommodation please contact the ADA Coordinator at 405-521-4140 or the Oklahoma Relay Service at 1-800-722-0353 no later than 72 hours before any scheduled event. If you have any ADA or Title VI questions email ODOT-ada-titlevi@odot.org.

"The mission of the Oklahoma Department of Transportation is to provide a safe, economical, and effective transportation network for the people, commerce and communities of Oklahoma."

AN EQUAL OPPORTUNITY EMPLOYER

Proposed Typical Sections

From south of Grand Avenue to the SH-51 Spur, SH-82 will be a four-lane divided facility. North of the SH-51 Spur, SH-82 will be a two-lane facility with 8-foot shoulders. However, ODOT will be purchasing enough right-of-way to build the divided four-lane highway all the way to Gideon, if and when traffic warrants and funding is available.

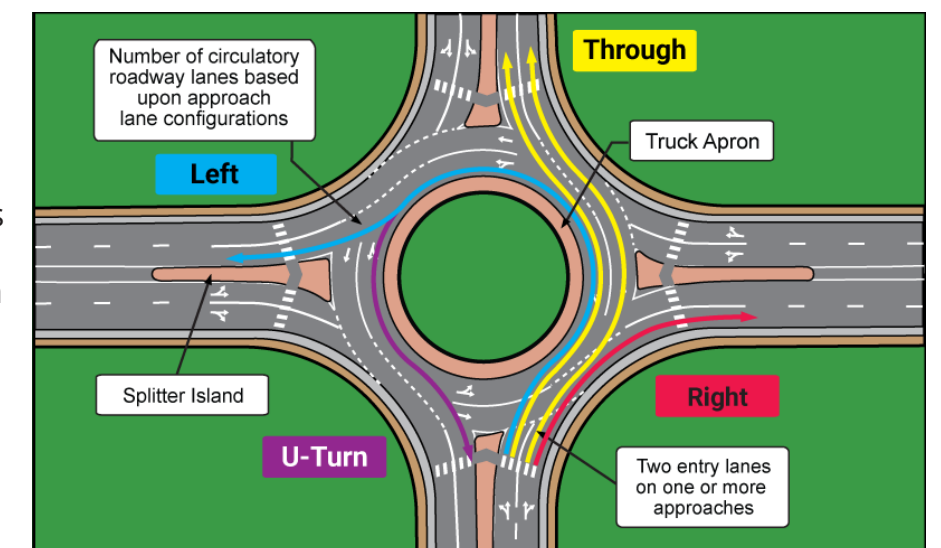


Project Description

The four-lane roadway will include four 12-foot wide lanes with 10-foot wide outside shoulders and 4-foot wide inside shoulders, with the two directions of traffic separated by a 64-foot median. The roadway will have a design speed of 65 mph. Between the Bertha Parker Bypass and the SH-51 Spur, the new highway will be access controlled, meaning vehicles will only be able to access the highway at certain points, including Grand Avenue, Grandview Road, and a connection to the existing SH-82 approximately midway between Wheeler Street and Grandview Road. North of the SH-51 Spur, direct access from private properties (e.g. driveways) will be allowed on the two-lane highway.

Changes to the Project

In an effort to improve safety, ODOT has added roundabout intersections at three locations: the intersections at SH-82 and Grand Avenue, at SH-82 and the SH-51 Spur, and at Jones and Jarvis Road. A roundabout is a circular intersection where traffic moves in a single direction around a central island. Roundabouts reduce the number and severity of collisions over traditional signalized intersections, and cost less to maintain in the long term.



The roundabouts at Grand Avenue and SH-51 Spur will be two lanes, the roundabout at Jones and Jarvis Road will be a single lane.

UPCOMING PROJECTS IN CHEROKEE COUNTY

- **SH-10:** Cable Barrier Safety Improvement from Approx. 12 Miles NW of Tahlequah, N. 10 Miles to Delaware County Line, JP 32095(04): 2023
- **SH-10:** Bank Protection from approx. 12.4 Miles NE of SH-51 Junction (Illinois River), JP 28969(04): 2023
- **SH-51:** Widen and Resurface from Hulbert East Approx. 8 Miles to Tahlequah, JP 30553(04): 2023
- **US-62:** Pavement Rehab from US-62/SH-82 Jct N. Approx. 1 Mile to Willis St. w/Intersection Modification JP 32105(04): 2023
- **SH-82:** Widen, Resurface, and Bridge from 4 Miles S. of SH-100/SH-82 Jct North 4 miles, JP32097(04): 2023
- **SH-82:** Widen and Resurface from 2.57 Miles S. of SH-82C Junction, N. 6 Miles, JP 30575(04): 2025
- **US-62:** Jct. US-62 and SH-51 Intersection Improvement, JP 33805(04): 2026
- **SH-100:** Widen, Resurface and Bridge from 3 Miles N. of Cherokee County Line extend E. 5 Miles, JP32098(04): 2026
- **SH-100:** Bridge and Approaches over Dry Creek, 0.5 Mile E. of Jct SH-82, JP 28029(04): 2026
- **SH-82:** Resurface, begin at S. Indian Rd. in Pettit, Extend N. 4.73 Miles to US-62 Jct, JP 34351(04): 2027

PROJECT INFORMATION SUMMARY

- Total Estimated Construction Cost of Project: **\$36 Million**
- Right-of-Way & Utility Relocation Programmed to Start in: **2020**
- Construction Programmed to Start in: **2022**
- Current Annual Average Daily Traffic (AADT) in year 2020: **9,690 Vehicles a day**
- Future Estimated AADT by Year 2045: **16,040 Vehicles a day**

*Totals DO NOT include Toll Roads

DIVISION 1 ENGINEER: CHRIS WALLACE, P.E.

**Totals DO NOT include County Bridges

***Total Road Miles:**
1,110.70

***Total Interstate Miles:**
97.31

****Total Bridges:**
704

Counties: Adair, Cherokee, Haskell, McIntosh, Muskogee, Okmulgee, Sequoyah, Wagoner



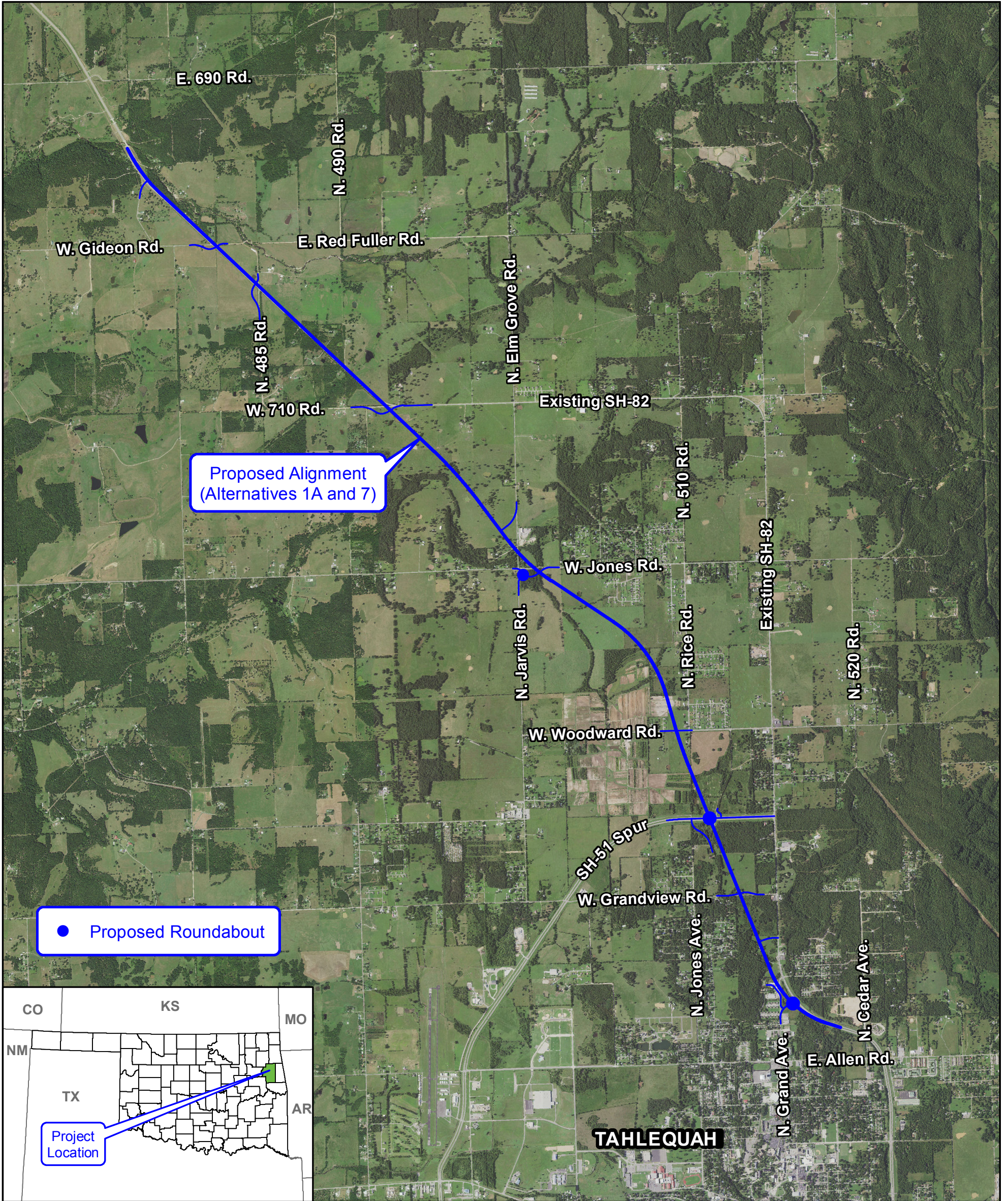
PLEASE PROVIDE YOUR COMMENTS BY JULY 3, 2020

**For more information
about the project**

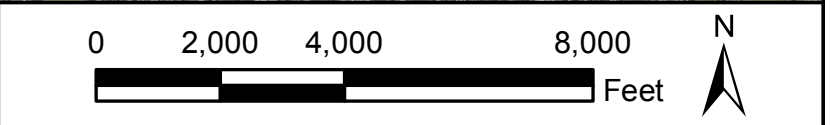
(405) 325-3269
environment@odot.org

<http://www.odot.org/publicmeetings>





Oklahoma Department of Transportation
 Proposed Alignment
 Cherokee County



27101(04) - SH-82: BEGIN 1.4 MI. N OF US-62/SH-51 JCT, EXT. NW TO SH-82/ W. 710 RD JCT
 27101(09) - SH-82: BEGIN @ SH-82/W. 710 RD JCT, N. APPROX 2.25 MI. TO FOURTEEN MILE CRK