



TRANSPORTATION
ALTERNATIVES

AWARD OF TRANSPORTATION ALTERNATIVES GRANTS

March 4th, 2019

AGENDA #37



FOR PRESENTATION AT THE MARCH 4, 2019 COMMISSION MEETING

AGENDA ITEM NO.: 37

SUBJECT: Award Announcement
Transportation Alternatives
Program Grants - FY 2019
Funding
0-5,000 Population

COUNTY: Statewide

TAP provides federal funding for programs and projects defined as transportation alternatives, including pedestrian and bicycle facilities, community improvement activities, safe routes to school projects, and other related activities.

The Department has reviewed applications submitted by eligible local sponsors for TAP projects in the eligible population category of 0-5,000.

The Department has partnered with Councils of Governments, Regional Transportation Planning Organizations, ODOT Division Engineers, and internal ODOT Staff to provide their recommendations reflecting local priorities for this program.

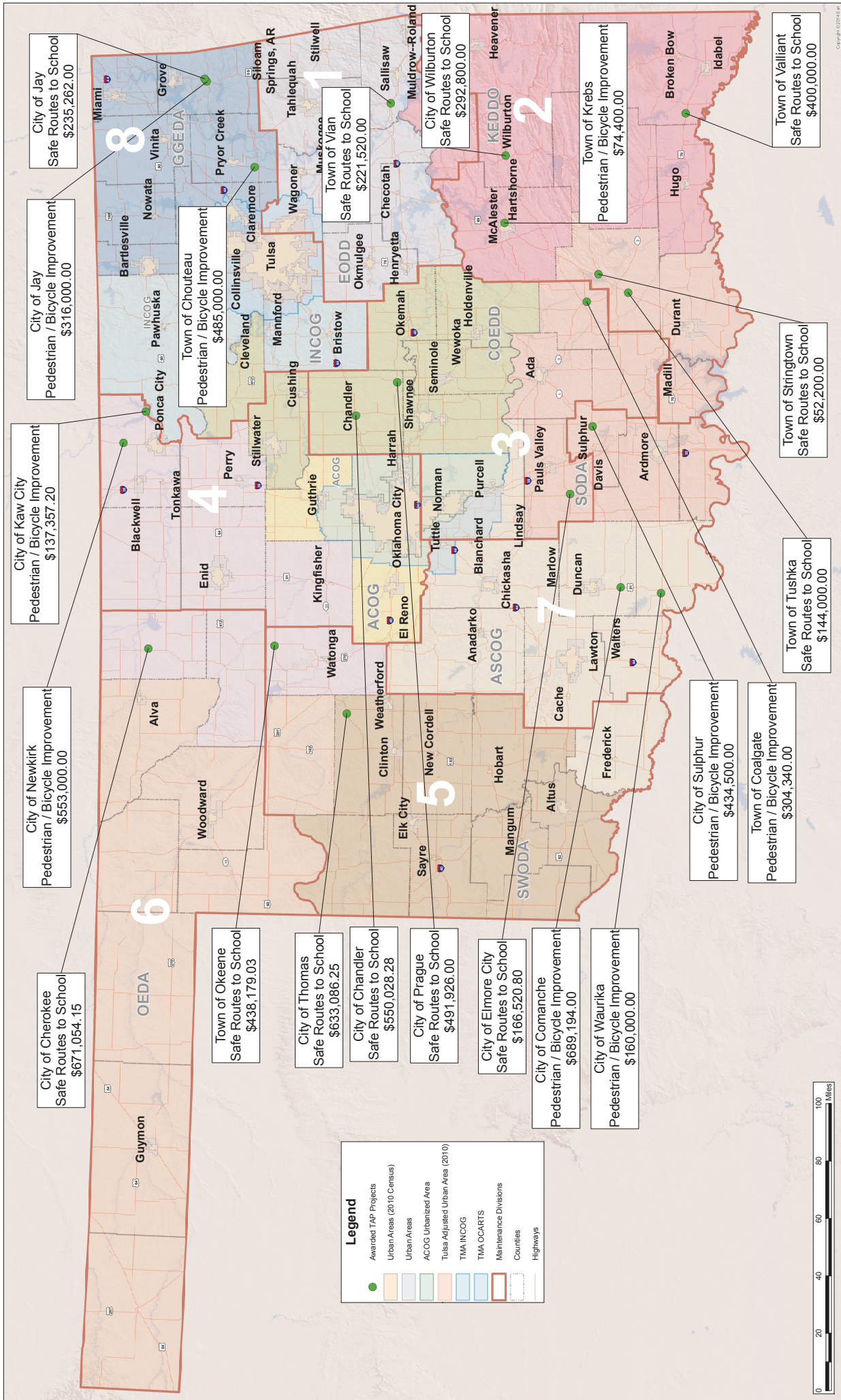
Approximately \$36 Million in TAP Funds were requested in this round of applications.

Projects are being awarded based on available funding as determined by a competitive application process established by the Department.

Funding for the program is provided by FHWA using reserved funds from the Transportation Alternatives Set-Aside fund. Federal funds provide up to 80% of the project costs, communities must commit at least 20% of matching funds to qualify for the grants.

The Department is recommending award of TAP funds as summarized below:

Category	Projects	TOTAL FUNDS TO AWARD
0K-5K	21	\$7,450,367.71



TAP PROJECTS & AWARDED FUNDING: 0-5000 Population

Transportation Commission -- 3/4/2019



Project Sponsor	Project Description and Location	Project Type	Federal Dollars Awarded
Chandler	ADA Pedestrian Crossings - Park Rd / Keith Duncan Blvd	Safe Routes to School	\$ 550,028.28
Cherokee	One mile of ADA compliant sidewalk and one mile of paved Shared Use Trail - Abandoned Railroad / 5th, 6th, 7th St	Safe Routes to School	\$ 671,054.15
Chouteau	ADA compliant sidewalk connecting school campuses - W Harrison Ave / E 8th St N	Pedestrian / Bicycle Improvement	\$ 485,000.00
Coalgate	ADA compliant sidewalks connecting downtown Coalgate to local businesses, city pool and park - US 75 from City Lake Park to Cherry Ave	Pedestrian / Bicycle Improvement	\$ 304,340.00
Comanche	New sidewalks, curb, guttering, traffic control, and crosswalks - SH 53	Pedestrian / Bicycle Improvement	\$ 689,194.00
Elmore City	Install ADA compliant sidewalks connecting schools to new safe-room shelters and upgrade pedestrian and bicycle safety conditions for school children - Missouri St / SH 29	Safe Routes to School	\$ 166,520.80
Jay	ADA compliant sidewalks to connect to Delaware County Courthouse - SH 10/59 / S 6th St	Pedestrian / Bicycle Improvement	\$ 316,000.00
Jay	ADA compliant sidewalks to connect Jay Upper Elementary, Middle School, and High School properties - SH 10/59 / Monroe St	Safe Routes to School	\$ 235,262.00
Kaw City	New sidewalks and walking trails for the town of Kaw City; connects Kaw City Community Center, City Park, Post Office, Senior Citizens Building, and Kaw City Museum - Washunga Dr / E Coleman Rd	Pedestrian / Bicycle Improvement	\$ 137,357.20

Project Sponsor	Project Description and Location	Project Type	Federal Dollars Awarded
Krebs	ADA compliant sidewalk connecting residential neighborhoods to Krebs Housing Authority and Deerinwater Park - NW Electric Avenue / Garfield Ave	Pedestrian / Bicycle Improvement	\$ 74,400.00
Newkirk	Newkirk Fitness Path Concept - Phase I - 9th St / N Maple Ave	Pedestrian / Bicycle Improvement	\$ 553,000.00
Okeene	5,175 ft of ADA compliant sidewalk improvements to create connections between Okeene Elementary and Middle Schools - Broadway St / Elm St	Safe Routes to School	\$ 438,179.03
Prague	3,500 ft of ADA compliant sidewalks, new pedestrian bridge, creates connection from City Park and Library to Prague Schools Campus - W 16th St / N Westlawn Dr / US 62	Safe Routes to School	\$ 491,926.00
Stringtown	910 ft of ADA compliant sidewalks with concrete barrier curbs connecting Stringtown School to Stringtown High School Gymnasium - Tiger St / Mulberry St	Safe Routes to School	\$ 52,200.00
Sulphur	Second phase of sidewalk construction, connects two sections of existing sidewalks - W 12th St / SH 7	Pedestrian / Bicycle Improvement	\$ 434,500.00
Thomas	0.5 miles of Share the Road Bicycle Facilities and 4,745 ft of ADA compliant sidewalks to connect Downtown Thomas to Thomas-Fay-Custer School Campus - Main St / Orient Ave	Safe Routes to School	\$ 633,086.25
Tushka	ADA compliant sidewalk connecting Tushka Public Schools with residential neighborhoods, community resources, and local businesses - Champion Dr / W Boggy Depot Rd	Safe Routes to School	\$ 144,000.00
Valliant	Multiple sections of sidewalk connecting existing downtown sidewalk to two Valliant City Parks and Valliant Public Schools Campus - McIlsh St / Section Line Rd	Safe Routes to School	\$ 400,000.00
Project Sponsor	Project Description and Location	Project Type	Federal Dollars Awarded

Vian	ADA compliant sidewalk connecting existing sidewalks, Vian Farmers Gazebo Park, and Vian Elementary School - SH 82 / Wolverine Rd / Sanders St	Safe Routes to School	\$ 221,520.00
Waurika	Phase I - replace 1,915 ft of existing dilapidated sidewalk with ADA compliant sidewalk near downtown Waurika - East D Ave / Main St / Pine St	Pedestrian / Bicycle Improvement	\$ 160,000.00
Wilburton	Connect to Phase I of Sidewalk/Trail Plan, replacing sidewalks - Blair St / NW 2nd St / NE 4th St	Safe Routes to School	\$ 292,800.00



TRANSPORTATION ALTERNATIVES

TAP Project Application

Sponsor Name: CITY OF CHANDLER

Project Description:

Phase I of The Chandler Safe Routes to School project includes traffic calming enhanced ADA accessible pedestrian crossings with flashing lights & tactile warning devices along with a 0.65 mile 8 ft. ADA accessible sidewalk starting at Park Road Elementary & continuing along Park Road to Keith Duncan Blvd. We will also be connecting the sidewalk to an existing walking trail. A partnership was also formed with Sac & Fox Nation, Lincoln Co. Commissioners & City of Chandler to replace an existing vehicular bridge that includes a pedestrian walkway that connects the proposed sidewalk project.

Project Location:

Latitude: 35.702878 Longitude: -96.899454

Project Length (miles):

0.65 miles

Project Defined in a Regional/Local Plan?:

YES

Project Funding

Total \$	Fed \$	Sponsor \$	Fed %	Sponsor %
\$719,875.00	\$550,028.28	\$169,847.52	76.4%	23.6%



TRANSPORTATION
ALTERNATIVES

Project Map / Plans



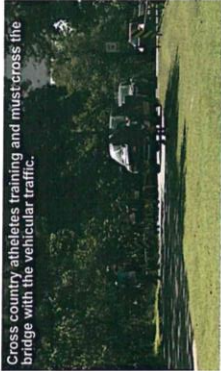
TAP GRANT
CHANDLER, OKLAHOMA

1/10/2018
MASS ARCHITECTS,
BIG IDEAS.



Legend:

- 01 crosswalk
- 02 storm drain extension
- 03 vehicular crossing
- 04 existing bridge
- 05 existing bridge
- Phase I Proposed sidewalk
- Phase II Proposed sidewalk additional lighting





TRANSPORTATION
ALTERNATIVES

PAGE LEFT INTENTIONALLY BLANK



TRANSPORTATION
ALTERNATIVES

TAP Project Application

Sponsor Name: CITY OF CHEROKEE

Project Description:

The City of Cherokee Safe Routes to School Project is located in the City of Cherokee in Alfalfa County. Cherokee has a population of 1,498 per the 2010 U.S. Census. Phase I (current application) of the project will provide one mile of ADA compliant sidewalk and almost one mile of paved shared use trail between Cherokee Park, Cherokee Public Schools, residential areas (including low income areas), and the newly remodeled school athletic facilities. If awarded, the sponsor match for the project will be provided by the City of Cherokee and Cherokee Public Schools with each contributing 50% of the match. There are currently no shared-use trails within the city and existing sidewalks are broken and unsafe. Many children have to walk in the street to get to school. The City of Cherokee Safe Routes to School Project will begin to remedy that situation with Phase I.

Phase II will improve the sidewalk in front of Cherokee Junior High & High School, as well as extend the sidewalk on 2nd Street from Phase I west to downtown and extend the trail from Phase I further south. After Phase II's completion, Phase III will extend 5th and 7th Street sidewalks from Phase I westward to Ohio Avenue and includes 6th Street sidewalk spanning from Ohio Avenue to Massachusetts Avenue. Phase IV will connect Phase I and Phase II together to complete the project. The City of Cherokee Safe Routes to School Project will help give pedestrians in adjacent residential areas a complete, safe, and accessible pedestrian transportation experience.

Project Location:

Latitude: 36.757398 Longitude: -98.348212

Project Length (miles):

1.65 miles

Project Defined in a Regional/Local Plan?:

YES

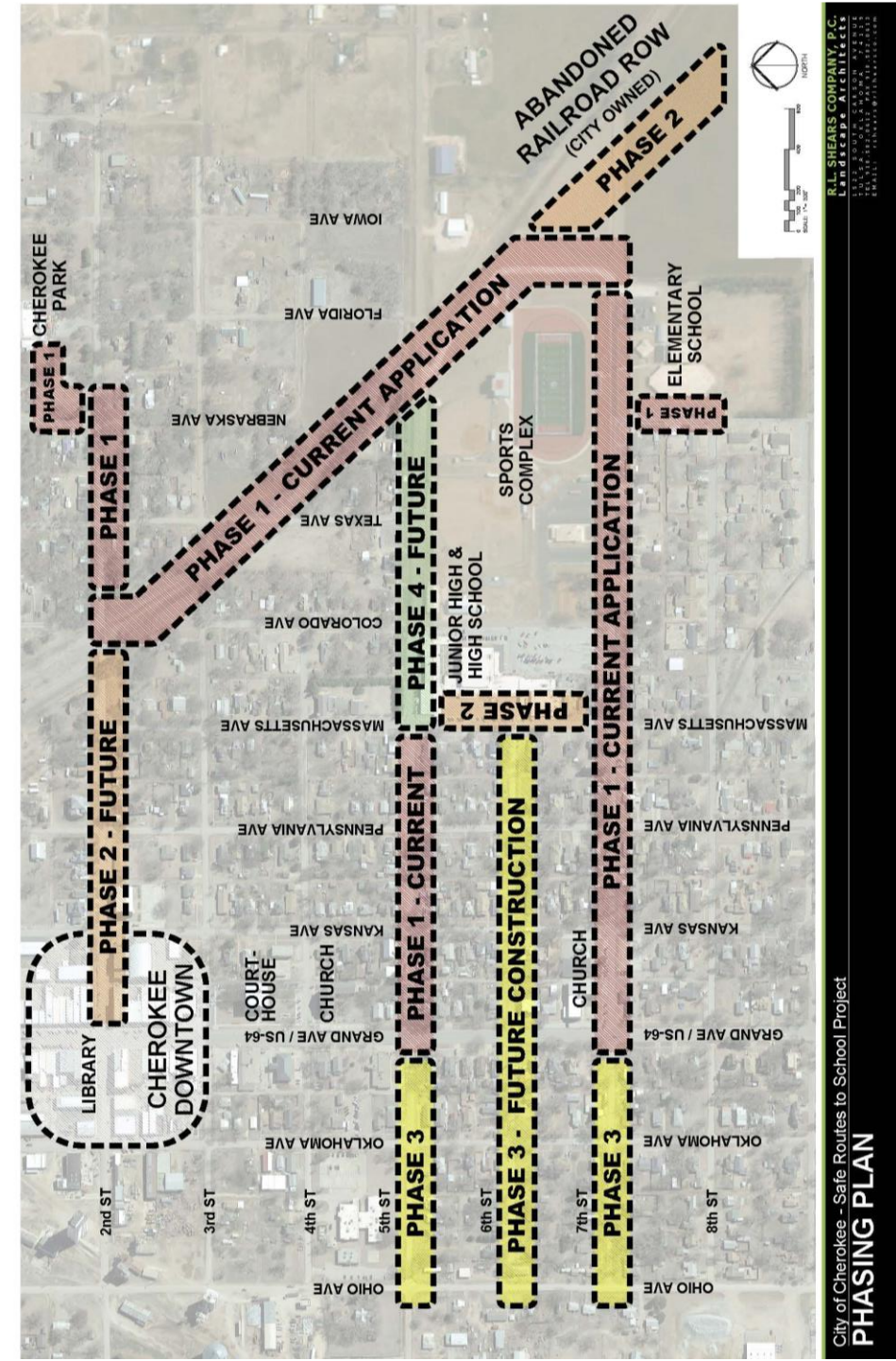
Project Funding

Total \$	Fed \$	Sponsor \$	Fed %	Sponsor %
\$849,435.63	\$671,054.15	\$178,381.48	79.0%	21.0%



TRANSPORTATION ALTERNATIVES

Project Map / Plans



City of Cherokee - Safe Routes to School Project
PHASING PLAN

R.L. SHEARS COMPANY, P.C.
1515 SOUTH SAKA, #200
LANDSCAPE ARCHITECTS
PHASING PLAN



TRANSPORTATION
ALTERNATIVES

TAP Project Application

Sponsor Name: TOWN OF CHOUTEAU

Project Description:

This project consists of three priorities.

Priority 1 provides an ADA compliant concrete sidewalk for safe, direct pedestrian and non-motorized access from Haley’s Village, a low-income housing complex with an estimated 300 residents, to the Chouteau school campuses. It utilizes a marked crossing with a pedestrian button on HWY 69.

Priority 1 also provides access from Green Briar Apartments, another low-income housing complex, a trailer park, pharmacy, laundry mat, church, City Park and walking trail, only local grocery store, and to four schools.

Priority 2 connects at the school campuses at a 4-way stop at Harrison Ave. & McCracken. It will replace the old, non-ADA compliant sidewalk with an ADA compliant sidewalk. This safer sidewalk will provide access from the school south to the new City Library, Senior Citizens Center, bank and business district.

Priority 3 will form a loop through the business section, providing pedestrian access to the Kroeker Family Care Center, business district and U.S. Post Office, connecting at a 4-way flashing red traffic light at Main & McCracken with a marked pedestrian crossing and completes the loop by reconnecting at McCracken & Olney.

Project Location:

Latitude: 36.757398 Longitude: -98.348212

Project Length (miles):

1.5 miles

Project Defined in a Regional/Local Plan?:

YES

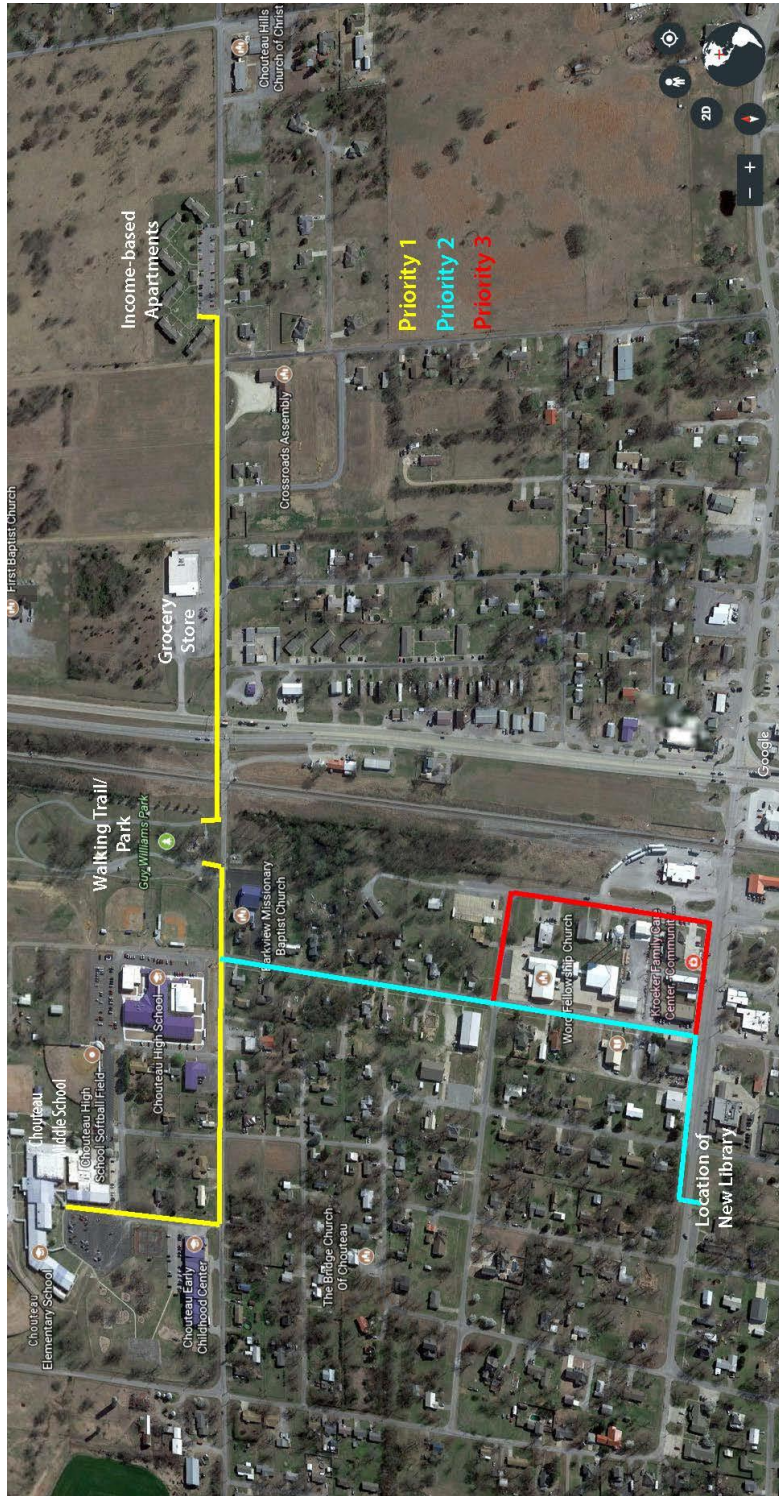
Project Funding

Total \$	Fed \$	Sponsor \$	Fed %	Sponsor %
\$713,673.73	\$485,000.00	\$228,673.73	68.0%	32.0%



TRANSPORTATION
ALTERNATIVES

Project Map / Plans





TRANSPORTATION
ALTERNATIVES

TAP Project Application

Sponsor Name: TOWN OF COALGATE

Project Description:

The Coalgate TAP project consists of 4' wide ADA compliant sidewalks connecting downtown Coalgate with local businesses and community resources including a commercial bank, grocery store, Choctaw Nation development center, health clinic, city pool, city park and the future Farmers Market. The project along US 75 from City Lake Park to Cherry Ave will include 5,030 linear feet of 4' wide sidewalks, crosswalk striping and signage, tactile walking surface indicator at crosswalks, curbs and gutters, ADA compliant ramps, trench drainage across sidewalk, and 12" to 18" drainage crossings. Special additions to this project will include three pedestrian activated Rectangular Rapid Flash Beacon (RRFB) signalization on Hwy 75 crosswalks, a concrete curb island at each intersection, HC ramp protection, 310 linear feet of a retaining wall next to drainage ditch, and large tree removal. A lack of constant sidewalks and the inconsistent grade changes and the lack of proper drainage creates a challenging path along all routes identified in this project. The proposed improvements will promote pedestrian and bicycle access to many vital community resources.

Project Location:

Latitude: 34.526836 Longitude: -96.219495

Project Length (miles):

0.95 miles

Project Defined in a Regional/Local Plan?:

YES

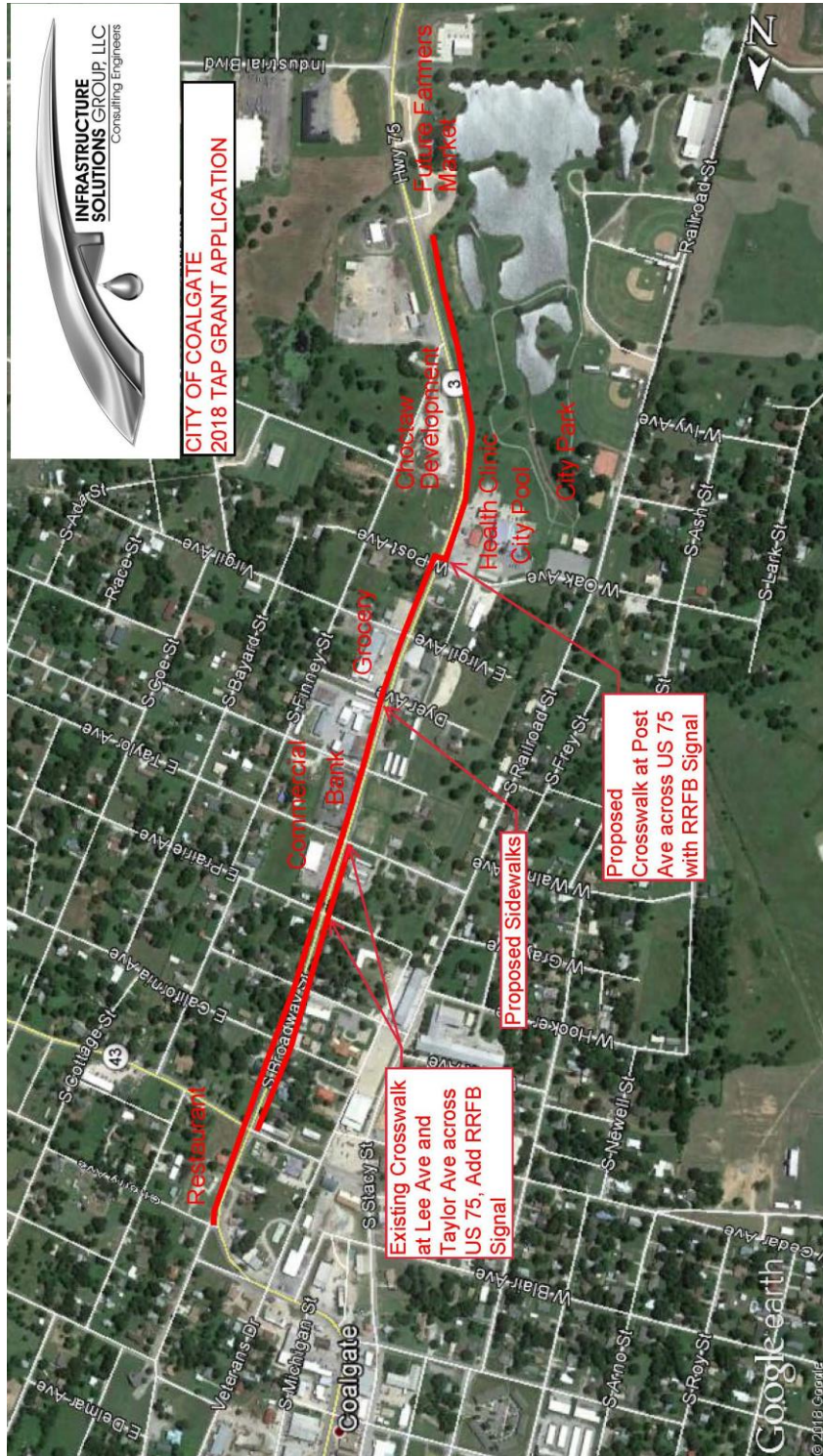
Project Funding

Total \$	Fed \$	Sponsor \$	Fed %	Sponsor %
\$380,425.00	\$304,340.00	\$76,085.00	80.0%	20.0%



TRANSPORTATION
ALTERNATIVES

Project Map / Plans





TRANSPORTATION
ALTERNATIVES

TAP Project Application

Sponsor Name: CITY OF COMANCHE

Project Description:

Phase 1 includes: removal of curb/gutter, sidewalks, and water lines, water meters, water boxes, electric lines, decorative street lights and light poles. Construction will include new sidewalks, curb and guttering (to channel the drainage on SH 53 more efficiently), water lines, meters, box, electric lines, traffic control and cross walks. The City of Comanche, through its Public Works Authority own the public utilities and will remove during demolition 1,500 linear feet of water lines and 2,100 linear feet of electric lines at a cost of \$48,000. During the construction process the City will install 1,050 linear feet of 8 inch water line and 450 linear feet of 2 inch waterline, new meters and boxes, irrigation lines and 2,100 linear feet of electric lines. The existing decorative street lights (22) when removed by the City will be rewired to support a single globe high efficiency bulb. The City will install the decorative lights and street lights. A local business owner will provide ten planters/urn for this project.

Project Location:

Latitude: 34.368939 Longitude: -97.964189

Project Length (miles):

0.46 miles

Project Defined in a Regional/Local Plan?:

YES

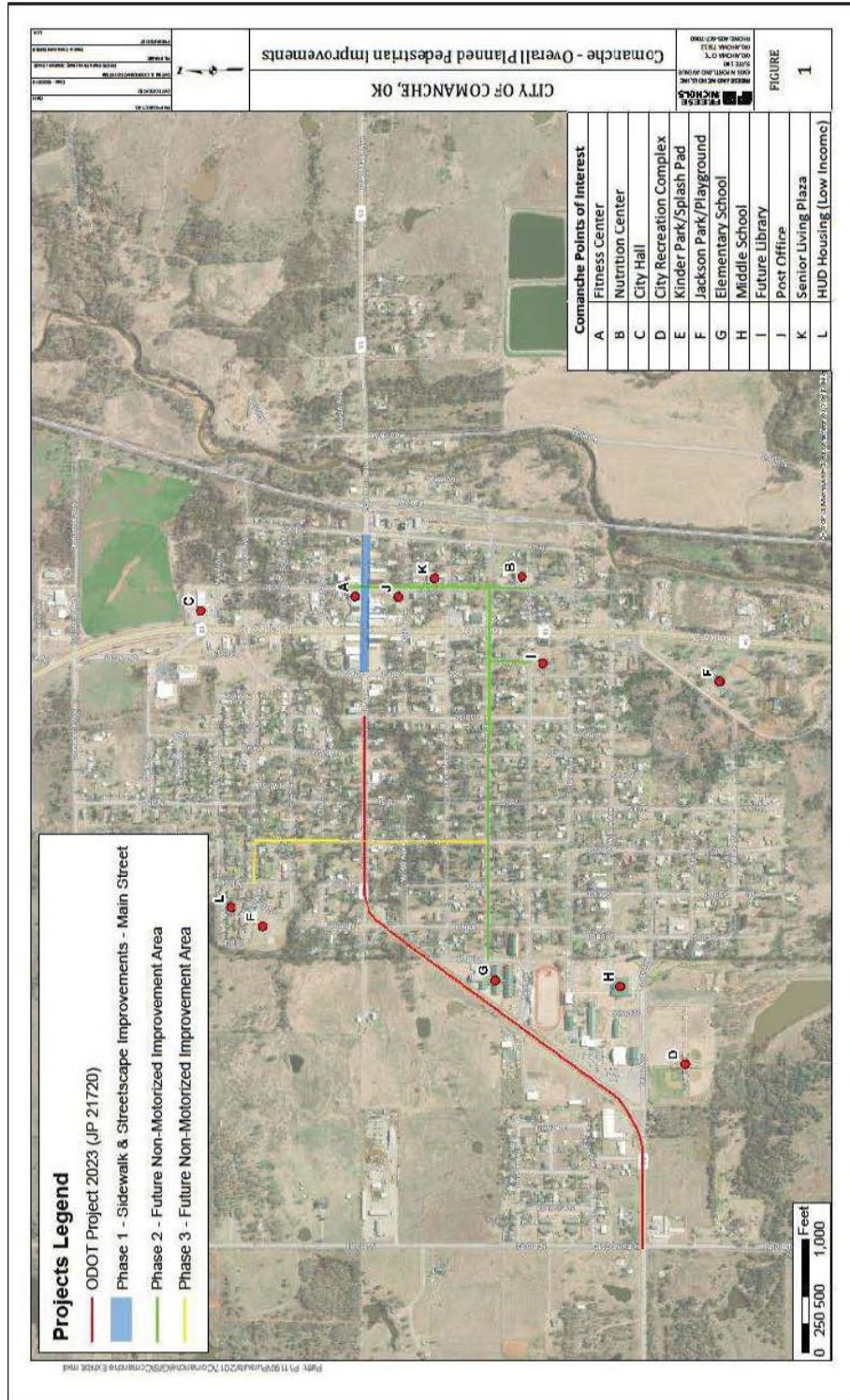
Project Funding

Total \$	Fed \$	Sponsor \$	Fed %	Sponsor %
\$921,492.00	\$689,194.00	\$232,298.00	74.8%	25.2%



TRANSPORTATION
ALTERNATIVES

Project Map / Plans





TRANSPORTATION
ALTERNATIVES

TAP Project Application

Sponsor Name: CITY OF ELMORE CITY

Project Description:

As described in the attached narrative, this project is part of a long-term Strategic Plan initiated locally and is designed to:

1. Install ADA compliant sidewalks linking our schools and safe-room shelters;
2. Link our school campuses to the business district and local points of interest with new ADA compliant sidewalks;
3. Upgrade pedestrian and bicycle safety conditions along two state highways by replacing antiquated school zone and crosswalk signage, and
4. Replace missing neighborhood street signage to improve EMS and police response time.

Our overall goal is shift the major transportation focus in this neighborhood by including improved options for walking and biking, as well as minimizing pedestrian exposure to motor vehicle traffic.

The Safe Routes to Schools project is sponsored by the town of Elmore City, Oklahoma; Elmore City - Pernel Schools; the Elmore City Area Chamber of Commerce; and the Local Education Foundation. The total estimated project cost is \$209,151, of which \$208,151 is addressed in the attached engineering document and covers sidewalks and signage. The additional \$1,000 (bicycle related aspects) will be provided by the Chamber and L.E.F. Both the city and school have committed to a combined twenty percent match.

Project Location:

Latitude: 34.360452 Longitude: -98.308313

Project Length (miles):

0.17 miles

Project Defined in a Regional/Local Plan?:

YES

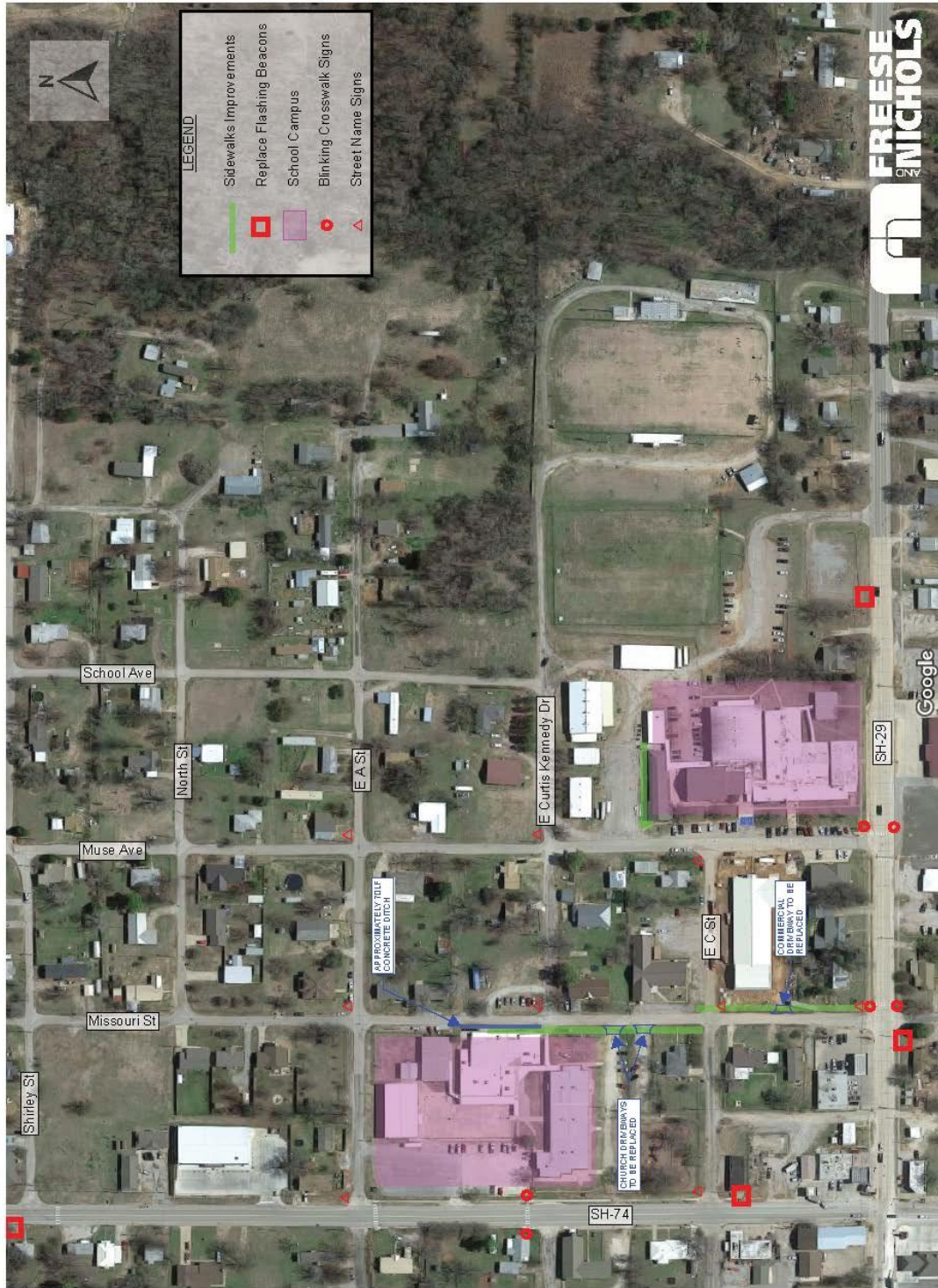
Project Funding

Total \$	Fed \$	Sponsor \$	Fed %	Sponsor %
\$208,151.00	\$166,520.80	\$41,630.20	80.0%	20.0%



TRANSPORTATION
ALTERNATIVES

Project Map / Plans





TRANSPORTATION ALTERNATIVES

TAP Project Application

Sponsor Name: CITY OF JAY

Project Description:

The City of Jay's main concern for this area is the lack of safe space to walk in. There are no paved shoulders or sidewalks and the area along the roadway is comprised of shallow ditches for drainage and commercial lots. Hwy 10/59 is a 4-lane road through our whole town. The proposed sidewalks would begin at the intersection of Hwy. 10/59 & S 6th St. heading west toward Homeland grocery store just past 16th St. This road serves as direct access to the Delaware County Courthouse square and the entire town hinges on this roadway. Hwy 10/59 also gives direct access to the main entrance for the Lower Elementary, Upper Elementary, Middle School & High School. Sidewalks are in place from Monroe St. (road to MS & HS) along the north side running directly in front of the Lower Elementary to 6th St. The majority of city resources and service facilities are located directly along Hwy. 10/59; the courthouse, convenience stores, DHS, Health Dept, library, Walmart and Homeland Grocery Store to name a few. Hwy 10/59 is used daily by families, elderly, and disabled in their motorized wheelchairs

Project Location:

Latitude: 36.421146 Longitude: -94.798700

Project Length (miles):

1.2 miles

Project Defined in a Regional/Local Plan?:

YES

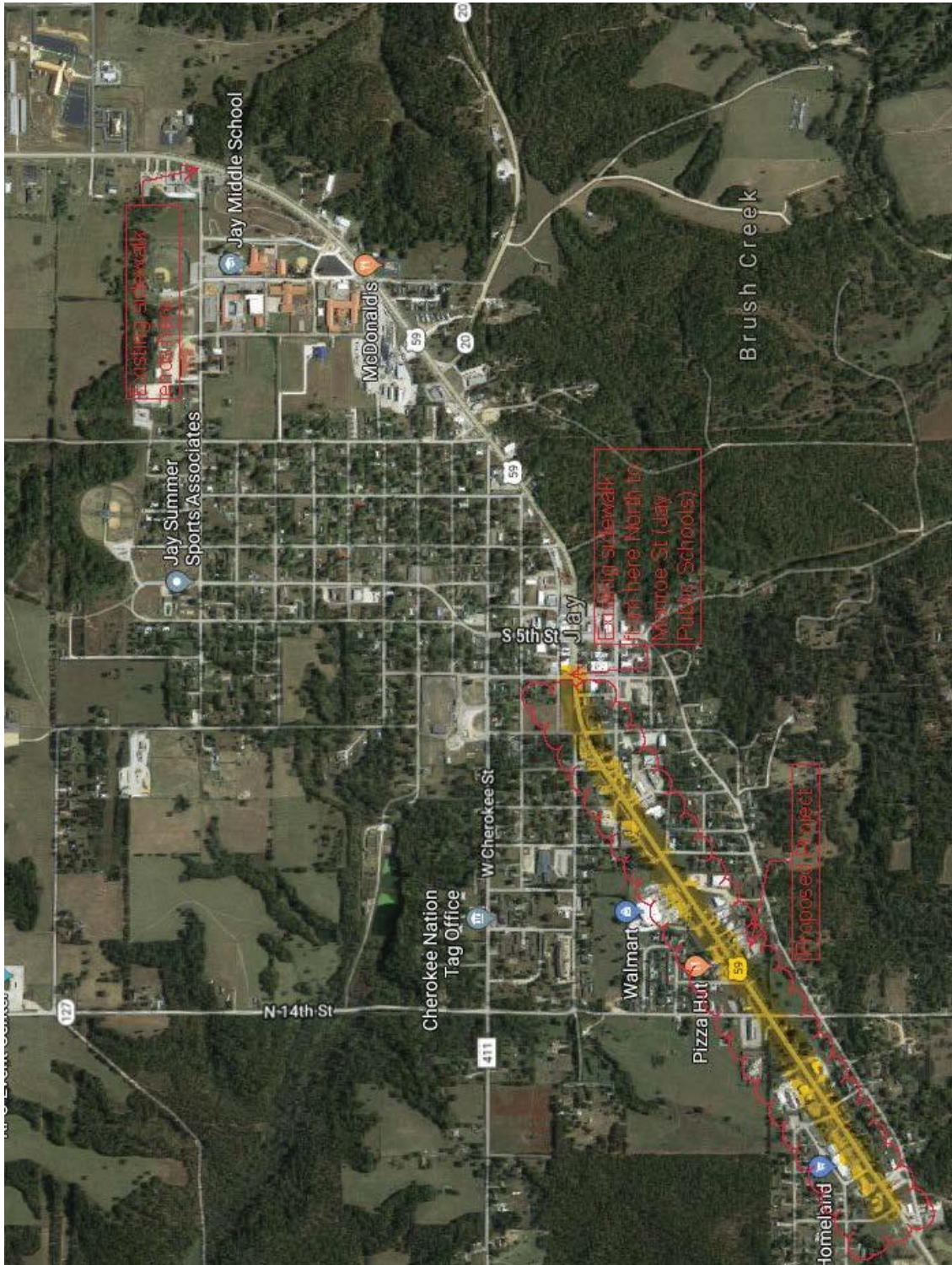
Project Funding

Total \$	Fed \$	Sponsor \$	Fed %	Sponsor %
\$400,000.00	\$316,000.00	\$84,000.00	79.0%	21.0%



TRANSPORTATION
ALTERNATIVES

Project Map / Plans





TRANSPORTATION ALTERNATIVES

TAP Project Application

Sponsor Name: CITY OF JAY

Project Description:

Our hope at the City of Jay is to improve the safety of the walking routes to and from Jay Public Schools. Lack of sidewalks and crosswalks are of enormous concern. Students and parents are forced to walk through residential yards to reach school each day. This area of our town is also the most densely populated. The sidewalks would start at the intersection of Hwy 10/59 & Monroe St. heading west toward Jay Public Schools. This road serves as the main entrance for Jay Upper Elementary, Middle School, and High School. Access is available to Lower Elementary as well (main entrance is directly off of Hwy10/59). The bus road for the district, exits behind all of the school buildings onto Monroe St. Monroe St. runs through the school zone, business zone (nursing home), residential area, and leads to the Jay City Park. Currently, the only available sidewalks for kids walking to and from school are directly in front of the Monroe Manor Skilled Nursing Facility and the Jay Ag Building.

Project Location:

Latitude: 36.430602 Longitude: -94.782607

Project Length (miles):

0.7 miles

Project Defined in a Regional/Local Plan?:

YES

Project Funding

Total \$	Fed \$	Sponsor \$	Fed %	Sponsor %
\$297,800.00	\$235,262.00	\$62,538.00	79.0%	21.0%



TRANSPORTATION
ALTERNATIVES

Project Map / Plans





TRANSPORTATION
ALTERNATIVES

TAP Project Application

Sponsor Name: CITY OF KAW CITY

Project Description:

The City of Kaw City Walking Trail and Sidewalks project will provide safe and accessible walking routes for the citizens and visitors of Kaw City. Currently there are no sidewalks or paths for citizens to safely walk to public facilities within the downtown city area. This project will give citizens a safe walking route which will connect to the city hall, the senior citizens building, city park, post office, Kaw City community building and the Kaw City museum. This sidewalk and walking trail project will also provide a safer route to the public school with new crosswalks which is also located in the project area.

The project will promote and encourage children, seniors and other residents to utilize the sidewalks and walking trail for a healthier lifestyle. At this time there are no sidewalks within this area and therefore, this project will also promote much needed safety benefits to the public. The public is now having to utilize the streets to walk to their destinations which is a major and definite safety hazard.

Because Kaw City is a tourist city with many visiting the Kaw Lake, The City of Kaw City will be responsible for the maintenance of the sidewalks and walking trail. The city will do this by keeping and maintaining the beautification of the area so that all can enjoy the benefits which will enhance the quality of life for all residents and visitors to the city.

Project Location:

Latitude: 36.764742 Longitude: -96.859108

Project Length (miles):

0.3 miles

Project Defined in a Regional/Local Plan?:

NO

Project Funding

Total \$	Fed \$	Sponsor \$	Fed %	Sponsor %
\$171,719.00	\$137,375.20	\$34,343.80	80.0%	20.0%



TRANSPORTATION
ALTERNATIVES

Project Map / Plans





TRANSPORTATION ALTERNATIVES

TAP Project Application

Sponsor Name: TOWN OF KREBS

Project Description:

The Krebs TAP project consists of a proposed 4' wide ADA compliant sidewalk along NW Electric Ave and continues east to Garfield Ave, connecting to the Krebs Deerinwater Park Walking Trail. This is also the first phase of a larger project that connects the city park to local businesses, food retailers, and Krebs Public Schools. The main goal of this phase of the project is to promote wellness and mobility for the citizens of Krebs by connecting residential neighborhoods and the Krebs Housing Authority with the existing walking trail, pavilion, three sports fields, and playground located at the Deerinwater Park. The proposed new sidewalks connected to the walking trail will focus on 1,420 linear feet and includes earthwork, ADA compliant ramps, tactile walking surface indicators at crosswalks, crosswalk striping and signage, and 12", 18", 24" drainage crossings. The proposed sidewalk will allow pedestrian access to Deerinwater Park. Currently, there is a lack of sidewalks, curbs, and many inconsistent grade changes, which creates a challenging path along the route identified in this project. The proposed improvements will promote pedestrian and bicycle access to the existing trails system and community resources.

Project Location:

Latitude: 36.764742 Longitude: -96.859108

Project Length (miles):

0.27 miles

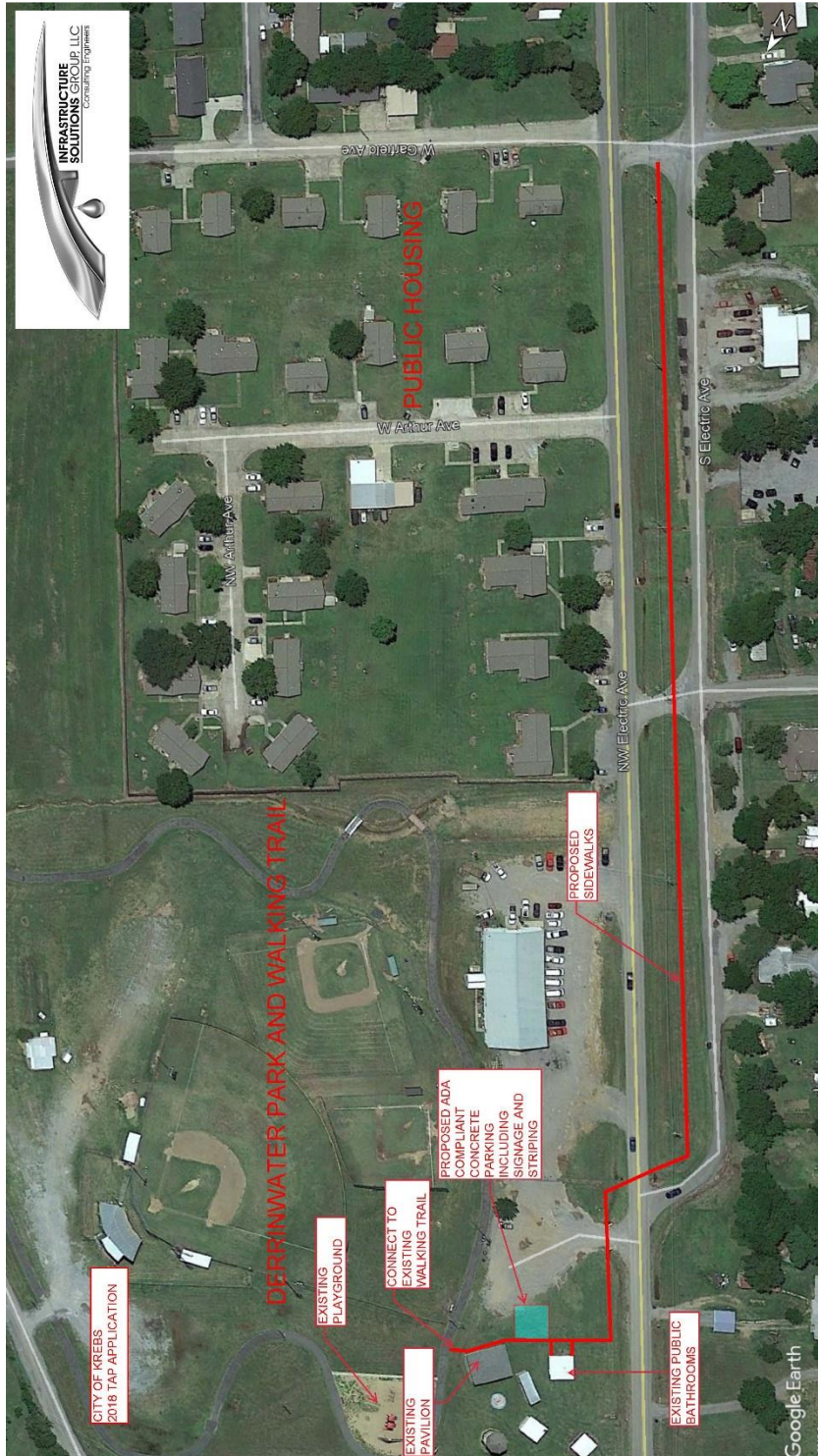
Project Defined in a Regional/Local Plan?:

YES

Project Funding

Total \$	Fed \$	Sponsor \$	Fed %	Sponsor %
\$93,000.00	\$74,400.00	\$18,600.00	80.0%	20.0%

Project Map / Plans





TRANSPORTATION ALTERNATIVES

TAP Project Application

Sponsor Name: CITY OF NEWKIRK

Project Description:

The Newkirk Fitness Path concept originated with a vision from a 10 year old and now has the support of a community. This concept incorporates three phases: Phase 1 - Pedestrian & Bicycle/ Non-Motorized Transportation Project, Phase II- Historic/ Scenic/Streetscape Transportation Project, Phase III- Safe Routes to School Project. The Phase I work description for the Newkirk Fitness Path includes new or reconstructed sidewalks, walkways, cross walks, curb drops, and bump outs. The project starts at 9th and Maple, moves north three blocks past the Newkirk Library, then east one block connecting with Newkirk's Historic Main Street (6th and Main). The path then travels 3 blocks north to 3rd Street then west 1 block to circle Lion's Park. The Phase II work description includes new or reconstructed sidewalks, walkways, cross walks, curb drops, bump outs, outdoor landscaping and streetscaping. The project starts at 9th and Maple, moving east one block then north two blocks to 6th street. Phase III of the project will be proposed with the next Safe Routes to School funding opportunity. All three phases share one connection point at 9th and Maple and will provide connectivity throughout the community.

Project Location:

Latitude: 36.879807 Longitude: -97.055029

Project Length (miles):

1.22 miles

Project Defined in a Regional/Local Plan?:

YES

Project Funding

Total \$	Fed \$	Sponsor \$	Fed %	Sponsor %
\$700,000.00	\$553,000.00	\$147,000.00	79.0%	21.0%



TRANSPORTATION ALTERNATIVES

TAP Project Application

Sponsor Name: TOWN OF OKEENE

Project Description:

The Town of Okeene Safe Routes to School Project will be implemented in the Town of Okeene in Blaine County. Okeene has a population of 1,204 per the 2010 U.S. Census. The first phase of this project, included in this application, will provide 5,175 feet of sidewalk improvements to create a Safe Route to School for students of Okeene. The completion of this phase will establish safe and ADA accessible pathways to Okeene Middle and Elementary Schools.

The long-term phasing plan for the Town of Okeene Safe Routes to School Project includes eight phases. Phase I will kick off the project with sidewalk improvements spanning from Broadway Street and Elm Street to Broadway Street and 6th Street. Next, Phase II will continue the sidewalk improvements from Phase I south on 6th Street until about 50 feet past the Town’s railroad crossing. After the completion of Phase II, Phase III will connect Phase I sidewalks to the Okeene Sports Complex on 5th Street. At the completion of all eight phases, Okeene residents will enjoy over two miles of ADA compliant sidewalks, one half mile of redesigned downtown streetscape, and a mile and a half of recreational trail access. All the improvements will help residents safely access and enjoy the town’s most popular destination points, such as public schools, the library, the Town park, and athletic facilities.

Project Location:

Latitude: 36.119077 Longitude: -98.327674

Project Length (miles):

0.98 miles

Project Defined in a Regional/Local Plan?:

YES

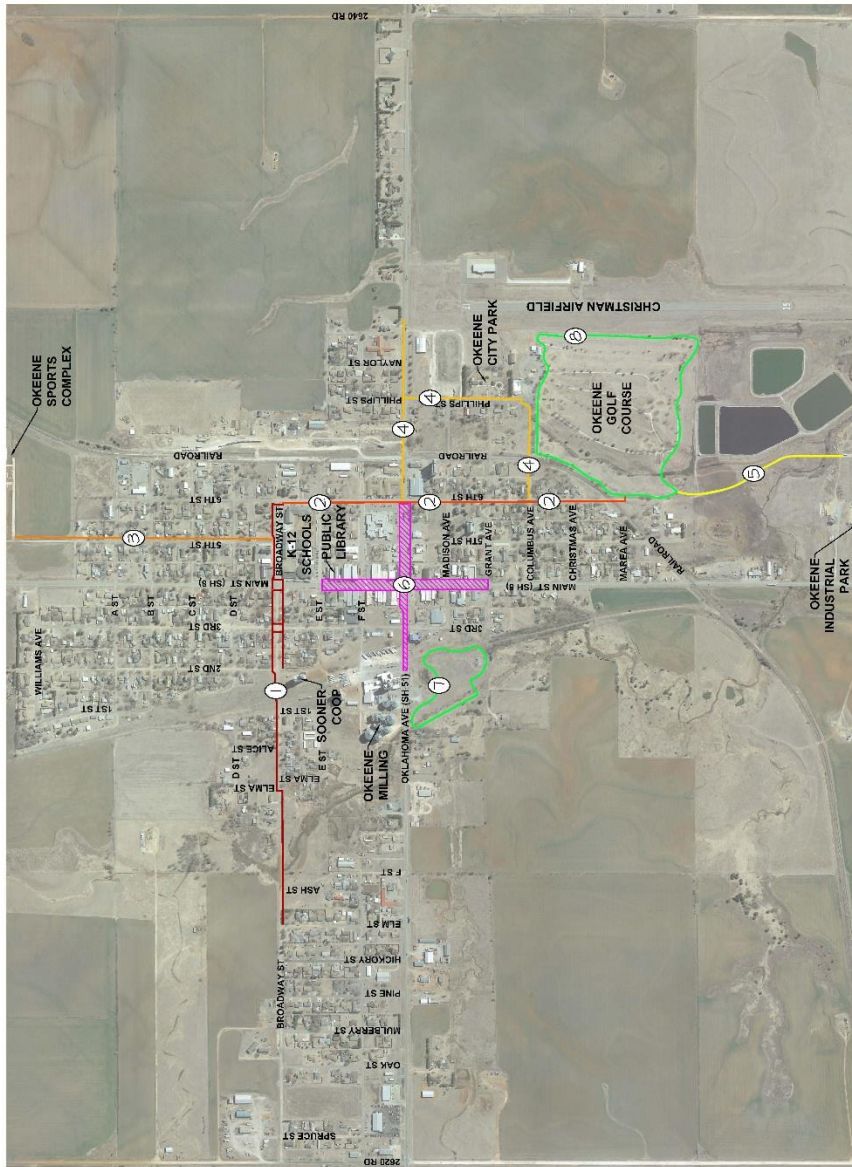
Project Funding

Total \$	Fed \$	Sponsor \$	Fed %	Sponsor %
\$554,657.00	\$438,179.03	\$116,477.97	79.0%	21.0%



TRANSPORTATION
ALTERNATIVES

Project Map / Plans



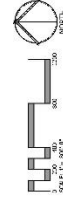
LEGEND

- SAFE ROUTES TO SCHOOL MADE TO CURRENT SPECIFICATIONS
- FUTURE SAFE ROUTES TO SCHOOL THROUGH EXISTING STREETS
- STREETS WITH PROPOSED SIDEWALKS
- FUTURE RECREATIONAL TRAILS

PHASING PRIORITY

①

PRELIMINARY PLANS
FOR REVIEW ONLY
NOT FOR CONSTRUCTION
11-01-2018



R.L. SHEARS COMPANY, P.C.
Landscape Architects

Town of Okeene - Safe Routes to School Project
OVERALL PHASING PLAN



TRANSPORTATION
ALTERNATIVES

TAP Project Application

Sponsor Name: CITY OF PRAGUE

Project Description:

This project is Phase One of our Safe Routes to School Plan. It consists of a new pedestrian bridge over the creek at the City Park, and then approximately 3500 feet of sidewalks connecting the park, the library and the schools, including new crosswalks, signage and signals. See project summary for more detail.

Project Location:

Latitude: 35.491776 Longitude: -96.696556

Project Length (miles):

0.60 miles

Project Defined in a Regional/Local Plan?:

YES

Project Funding

Total \$	Fed \$	Sponsor \$	Fed %	Sponsor %
\$614,908.00	\$491,926.00	\$122,982.00	80.0%	20.0%



**TRANSPORTATION
ALTERNATIVES**

Project Map / Plans





TRANSPORTATION
ALTERNATIVES

TAP Project Application

Sponsor Name: TOWN OF STRINGTOWN

Project Description:

The Stringtown TAP Project will consist of a proposed 910 linear feet of 4' wide and 4" thick concrete sidewalk with concrete barrier curbs and gutters along Tiger Street from Stringtown School to the Stringtown Public High School Gymnasium. The project will also include ADA compliant ramps with tactile walking surface indicators, crosswalk striping and crosswalk signage, as well as 12" drainage crossing under the sidewalks and trench drainage across sidewalks. The main goal of the project will be to connect the Stringtown school system and a new gymnasium, currently under construction, with the Town of Stringtown Public Park, while creating safe routes for students to walk to and from school. The need for this project is due to a lack of safe sidewalks along Tiger Street. With a proposed ADA compliant sidewalk, barrier curbs and gutters, this project will promote pedestrian and bicycle access to the existing public school system and local park area.

Project Location:

Latitude: 34.465178 Longitude: -96.052584

Project Length (miles):

0.17 miles

Project Defined in a Regional/Local Plan?:

YES

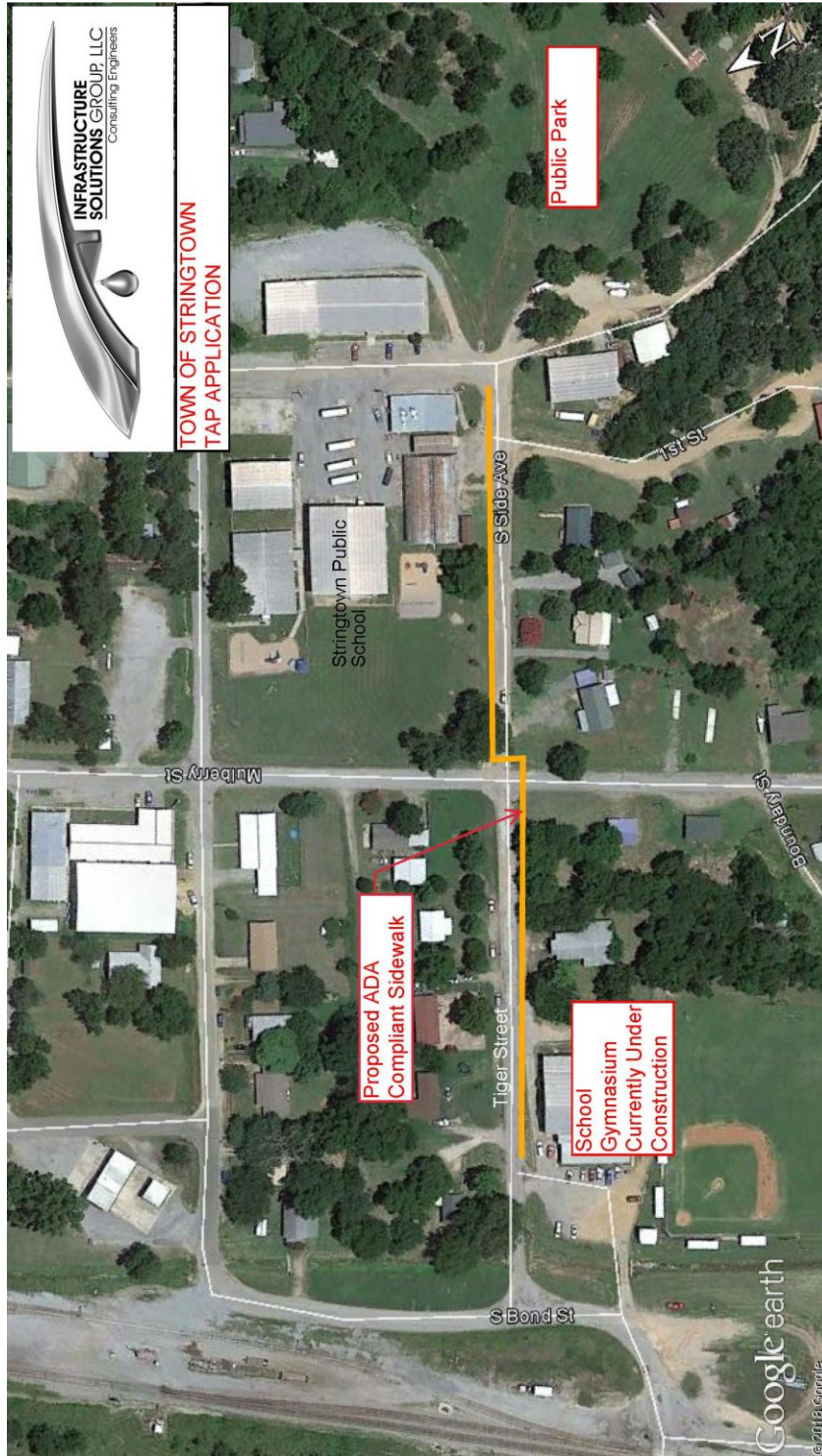
Project Funding

Total \$	Fed \$	Sponsor \$	Fed %	Sponsor %
\$65,250.00	\$52,200.00	\$13,050.00	80.0%	20.0%



TRANSPORTATION
ALTERNATIVES

Project Map / Plans





TRANSPORTATION
ALTERNATIVES

TAP Project Application

Sponsor Name: CITY OF SULPHUR

Project Description:

The Sulphur Sidewalk Connection Project is the second phase of sidewalk projects to be constructed. This phase connects the existing sidewalk on West 12th Street to the new sidewalk that ended at West 18th Street along the South border of Hwy 7. The project was designed in conjunction with an ODOT project # 32934 (04) completed in July 2018, as part of ADA Improvements. The project is part of our 2009 General Plan and Strategic Action Plan. Engineering was completed in 2010, and requires minimal enhancements.

Project Location:

Latitude: 34.506421 Longitude: -96.982003

Project Length (miles):

0.50 miles

Project Defined in a Regional/Local Plan?:

YES

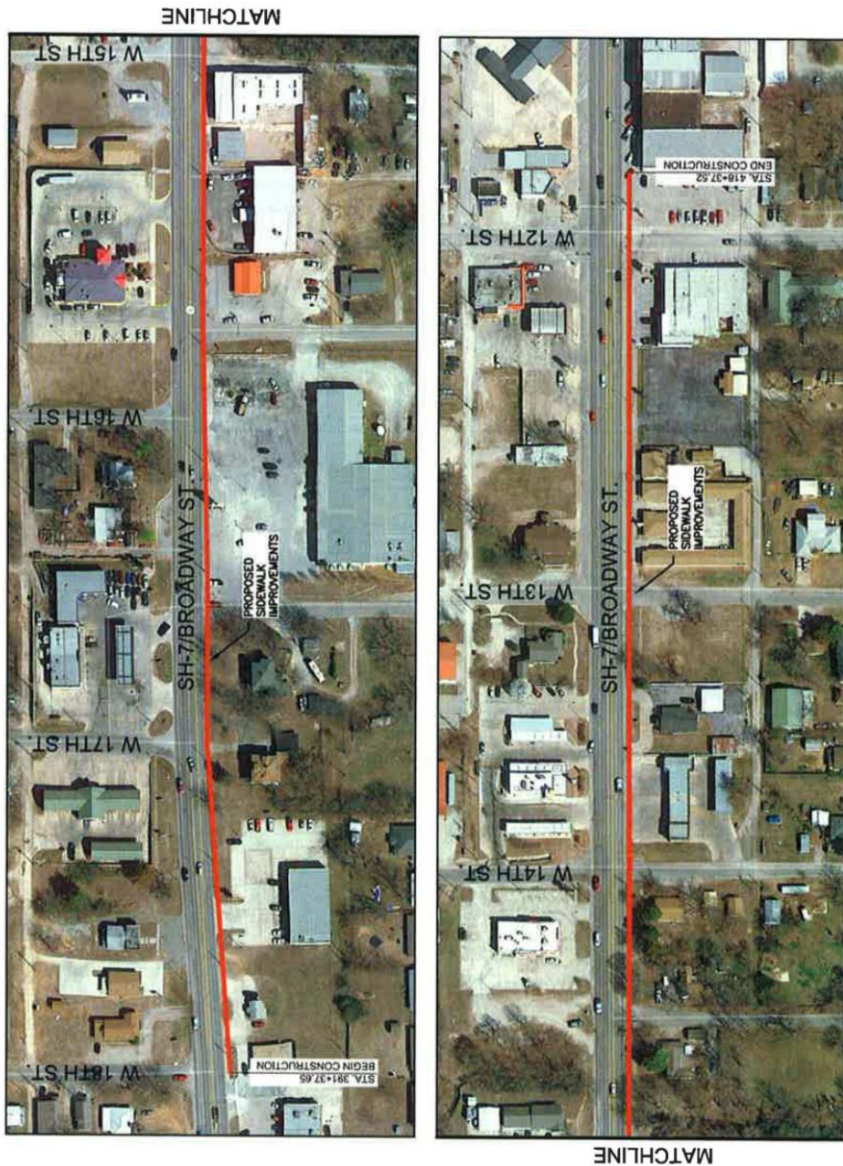
Project Funding

Total \$	Fed \$	Sponsor \$	Fed %	Sponsor %
\$550,000.00	\$434,500.00	\$115,500.00	79.0%	21.0%



TRANSPORTATION
ALTERNATIVES

Project Map / Plans

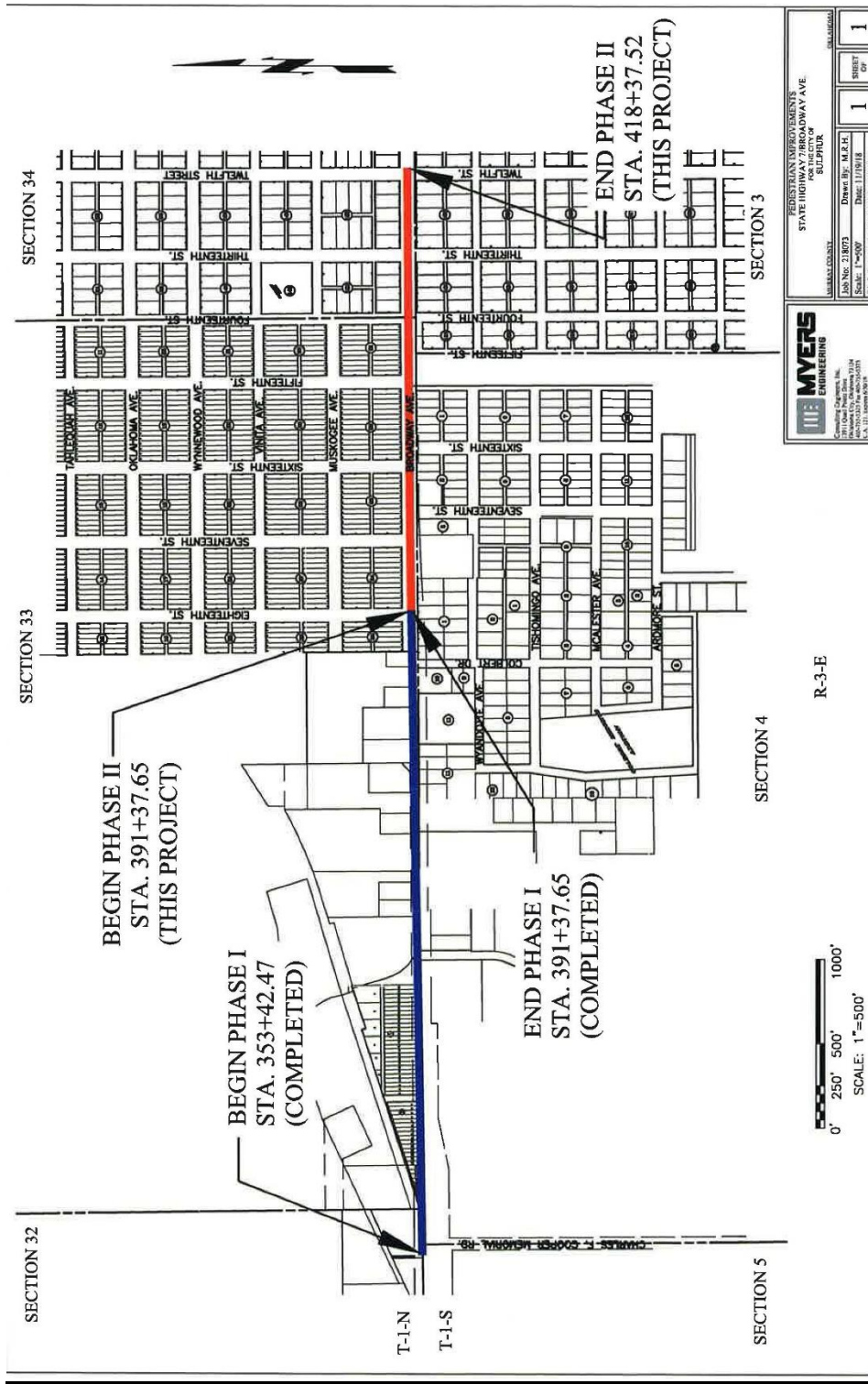


SCALE: 1"=200'

<p>Consulting Engineers, Inc. 13911 Quail Pointe Drive Oklahoma City, Oklahoma 73134 405-755-5323 Fax 405-755-5373 C.A. 211, Engineer 6200 F9 http://www.myersinc.com</p>		PEDESTRIAN IMPROVEMENTS FOR THE CITY OF SULPHUR	
		STATE HIGHWAY 7/BROADWAY AVE. SULPHUR COUNTY OKLAHOMA	
Job No: 218073	Drawn By: M.R.H.	1	1
Scale: 1"=200'	Date: 11/19/18	SHEET	OF
File Path: J:\SULPHUR\818073\CADD\CURRENT DWGS			



TRANSPORTATION ALTERNATIVES



PERISTIAN IMPROVEMENTS STATE HIGHWAY 7/BROADWAY AVE SECTION OF SULPHUR	
Job No: 218073	Drawn By: M.R.H.
Scale: 1"=500'	Date: 11/09/18
Sheet: 1	Sheet: 1
Sheet: 1	Sheet: 1

MYERS
ENGINEERING

Consulting Engineers
2011 Oak Street
Lawton, Oklahoma 73505
Phone: 580.881.1111
Fax: 580.881.1112

R-3-E





TRANSPORTATION
ALTERNATIVES

PAGE LEFT INTENTIONALLY BLANK



TRANSPORTATION
ALTERNATIVES

TAP Project Application

Sponsor Name: CITY OF THOMAS

Project Description:

The City of Thomas Safe Routes to School Project is located within the City of Thomas in Custer County. The project will alternative modes of transportation in the form of 4,745 linear feet of ADA compliant sidewalk facilities and nearly 1/2 mile of Share the Road bike facilities through the heart of the city’s largest residential area along Main Street. At the north end of the project is Thomas-Fay-Custer Public Schools, and the south end will connect to Downtown Thomas. As most of the local east-west streets feed into Main Street, the project will provide a pedestrian and cyclist collector route for citizens traveling to school as well as those intending to enjoy downtown amenities.

This project is the second phase of a three-phase transportation alternatives plan. The current phase is located along Main Street from Orient Avenue north to Rice Street and the Thomas-Fay-Custer Public Schools. Phase I is a streetscape project located within the downtown area and construction is planned for 2019. Funding for Phase I comes from FY 2016 TAP. Phase I is also along Main Street and will connect extend from Orient Avenue to Frisco Avenue. Phase III is also a streetscape project located along OK-33 and is part of the ODOT 8-Year Plan with an estimated construction date in 2023. Phase III’s streetscape will extend from Missouri Avenue to Oklahoma Street. The streetscape projects will provide ADA-compliant sidewalks, lighting, landscaping, crosswalks and other amenities in the downtown area. Phase II will connect to Phase I (downtown) and provide access to points of interest such as churches, the grocery store, downtown, and the school

Project Location:

Latitude: 35.751860 Longitude: -98.747601

Project Length (miles):

0.90 miles

Project Defined in a Regional/Local Plan?:

YES

Project Funding

Total \$	Fed \$	Sponsor \$	Fed %	Sponsor %
\$801,375.00	\$633,086.25	\$168,288.75	79.0%	21.0%

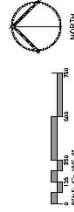


TRANSPORTATION
ALTERNATIVES

Project Map / Plans



NOTE
PHASE 3K ROAD BIKEWAY FACILITY, INCLUDING
STREET FROM 1ST TO 11TH STREET,
SHALL BE CONCEPTUAL.



R.L. SHEARS COMPANY, P.C.
2175 SOUTH CALLOWAY AVENUE
TULSA, OKLAHOMA 74106
TEL: 918.592.1100 FAX: 918.592.1101

City of Thomas - Safe Routes to School Project
PHASING PLAN



TRANSPORTATION
ALTERNATIVES

TAP Project Application

Sponsor Name: TOWN OF TUSHKA

Project Description:

The Tushka TAP project consists of a proposed 4' wide ADA compliant sidewalk connecting Tushka Public Schools with local residential neighborhoods, community resources, and local businesses. The project will include 2,800 linear feet of 4' wide sidewalks from the new Tushka Public School along Champion Drive and connects to South 2nd Street and W Boggy Depot Road. The infrastructure improvements include, concrete barrier curbs and gutters, ADA compliant ramps, tactile walking surface indicators at crosswalks, crosswalk striping and signage, grading and earthwork, and 18" and 36" drainage crossings. A lack of sidewalks, curbs, and the inconsistent grade changes, as well as, the lack of proper drainage creates a challenging path along all routes identified in this project. The proposed improvements will promote pedestrian and bicycle access for students, as well as Tushka residents, to the local school system and many existing community resources.

Project Location:

Latitude: 34.316886 Longitude: -96.169173

Project Length (miles):

0.53 miles

Project Defined in a Regional/Local Plan?:

YES

Project Funding

Total \$	Fed \$	Sponsor \$	Fed %	Sponsor %
\$180,000.00	\$144,000.00	\$36,000.00	80.0%	20.0%



TRANSPORTATION
ALTERNATIVES

Project Map / Plans





TRANSPORTATION
ALTERNATIVES

TAP Project Application

Sponsor Name: TOWN OF VALLIANT

Project Description:

The Valliant TAP project consists of multiple sections totaling 5,165 linear feet of proposed 4’ wide ADA compliant sidewalks connecting the existing downtown sidewalk to two Valliant City Park areas, as well as, the entire Valliant school system including elementary, middle school, high school, gymnasium and outdoor facilities. The project will also be connecting the Valliant Housing Authority and Head Start to provide access to community services for those seeking non-motorized transportation alternatives. This project promotes walkability to and from work, school, and recreational facilities. The project also includes curbs and gutters, crosswalk striping and signage, ADA compliant ramps with tactile walking surface indicators, trench drainage across sidewalk, as well as, 12” and 18” drainage crossing under sidewalk in the necessary areas.

A section of the project at Mclish Street will require removal of 880 linear feet of the old sidewalk and replace with a 4’ wide sidewalk for 2,810 linear feet. The project also includes two mid-block crosswalks with pedestrian activated Rectangular Rapid Flashing Beacon (RRFB), with high pedestrian traffic at the Valliant Middle School and Valliant High School and Gymnasium. An area of Section Line Road will also require restriping the parking on Lucas to accommodate the mid-block crosswalk. The RRFB signalization is used to improve driver yield rates while creating safe access for pedestrians to walk and bike to both schools.

Project Location:

Latitude: 34.004523 Longitude: -95.087038

Project Length (miles):

0.98 miles

Project Defined in a Regional/Local Plan?:

YES

Project Funding

Total \$	Fed \$	Sponsor \$	Fed %	Sponsor %
\$500,000.00	\$400,000.00	\$100,000.00	80.0%	20.0%



TRANSPORTATION
ALTERNATIVES

Project Map / Plans





TRANSPORTATION
ALTERNATIVES

TAP Project Application

Sponsor Name: TOWN OF VIAN

Project Description:

The Vian TAP project consists of a proposed 4' wide ADA compliant sidewalk connecting existing sidewalks along SH-82 to the Vian Anna Farmers Gazebo Park in the downtown corridor and residential park at Dewey and Sanders Street with the Vian Elementary School. The main goal of this project is to connect the Vian school system with two local parks, one of which is near residential housing and the other park being in the downtown corridor near many local businesses and community resources.

The new sidewalks will focus on 850 linear feet along SH-82 from Main Street to Hunter Street and will consist of 18" drainage crossings with headwalls and 12" drainage crossings under the sidewalks, trench drainage across sidewalks, crosswalk striping, crosswalk signage, and ADA compliant ramps with tactile walking surface indicators at intersections. The project will also include an 18-24" retaining wall for grade difference between the sidewalks and drainage ditch in necessary locations, as well as, a safe pedestrian path crossing the railroad with signage, ramps and drainage conveyance.

In addition, a section of the project from the residential city park to Vian schools will include 2,030 Linear Feet of 4' wide sidewalks with an 18" drainage crossing with headwalls, trench drainage across sidewalks, crosswalk striping, tactile walking surface indicator at crosswalks, crosswalk signage, 18-24" retaining wall for grade difference between sidewalk and drainage ditch, as well as, pedestrian activated Rectangular Rapid Flash Beacon (RRFB) signalization on the SH-82 crosswalk.

Project Location:

Latitude: 35.493774 Longitude: -94.971171

Project Length (miles):

0.55 miles

Project Defined in a Regional/Local Plan?:

YES

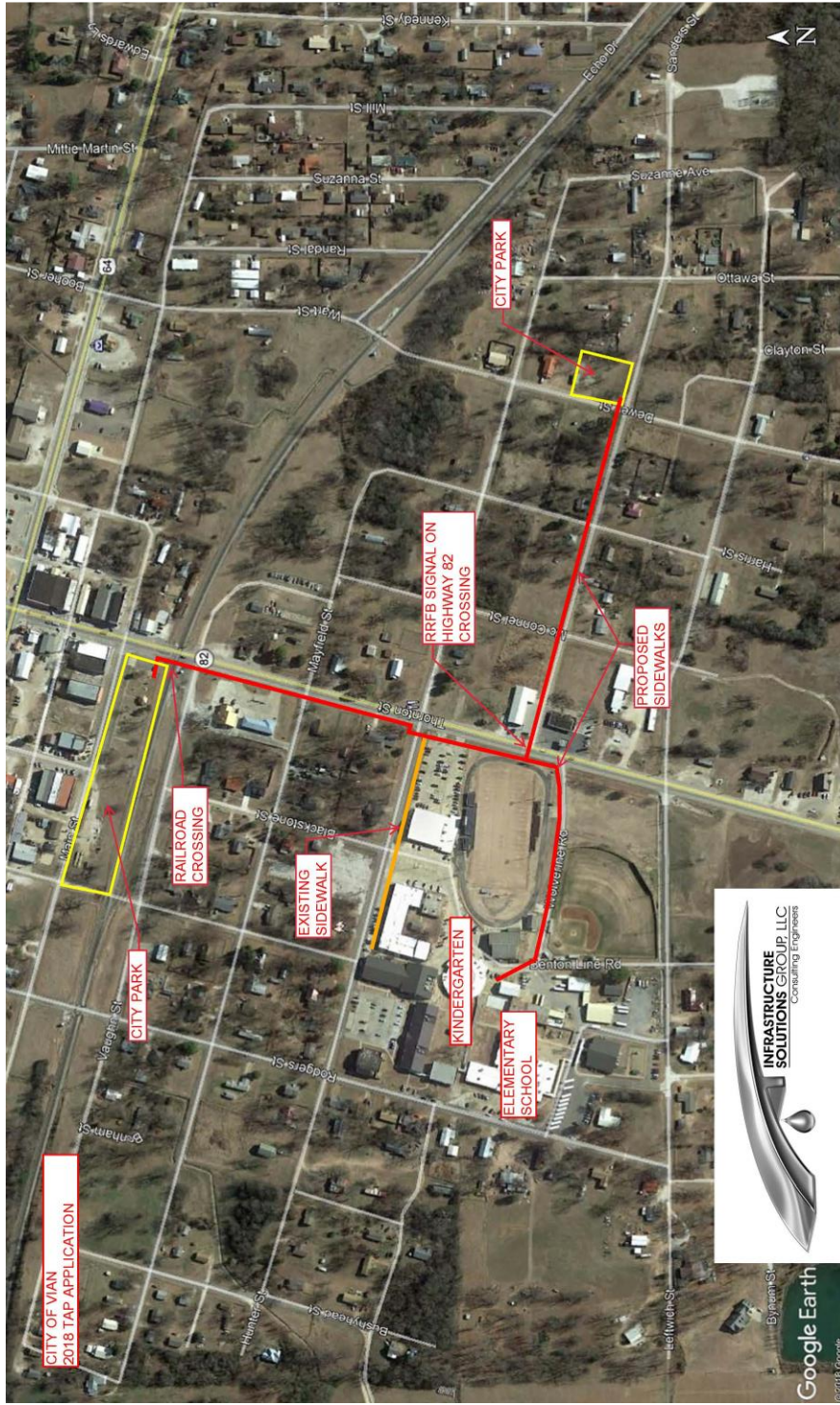
Project Funding

Total \$	Fed \$	Sponsor \$	Fed %	Sponsor %
\$276,900.00	\$221,520.00	\$55,380.00	80.0%	20.0%



TRANSPORTATION
ALTERNATIVES

Project Map / Plans





TRANSPORTATION
ALTERNATIVES

TAP Project Application

Sponsor Name: CITY OF WAURIKA

Project Description:

The City of Waurika sidewalk project phase 1 will replace 1,915 FT, approximately 5 blocks, of the existing dilapidated sidewalks and build and maintain ADA compliant sidewalks on East D Avenue from Main Street to Pine Street. This will provide low income, non-driving citizens, the elderly, the young and the handicapped a safer route from residential areas to the downtown area, including local parks and the public library as well as Waurika's only grocery store. The project decreases the likelihood of dangers for pedestrians while increasing overall health and well-being. As funding is available, we intend to begin Phase 2 of this project, which will allow us to finish the remaining 3 blocks of East D Avenue from Pine Street to NE 8th Street. Phase 1 and 2, will allow ease of access for our school system and the Waurika Housing Authority to our downtown area.

Project Location:

Latitude: 34.164957 Longitude: -97.999951

Project Length (miles):

0.36 miles

Project Defined in a Regional/Local Plan?:

NO

Project Funding

Total \$	Fed \$	Sponsor \$	Fed %	Sponsor %
\$200,000.00	\$160,000.00	\$40,000.00	80.0%	20.0%



TRANSPORTATION
ALTERNATIVES

Project Map / Plans





TRANSPORTATION
ALTERNATIVES

TAP Project Application

Sponsor Name: CITY OF WILBURTON

Project Description:

From NW 2nd St to NE 4th St, adding or replacing sidewalks down Blair St. Wilburton, OK. to connect to Phase 1 of the Sidewalk/ Trail Plan. To provide safe walking to/from school from East side of town.

Project Location:

Latitude: 34.920931 Longitude: -95.313525

Project Length (miles):

0.64 miles

Project Defined in a Regional/Local Plan?:

YES

Project Funding

Total \$	Fed \$	Sponsor \$	Fed %	Sponsor %
\$366,000.00	\$292,800.00	\$73,200.00	80.0%	20.0%



TRANSPORTATION
ALTERNATIVES

Project Map / Plans





TRANSPORTATION
ALTERNATIVES

