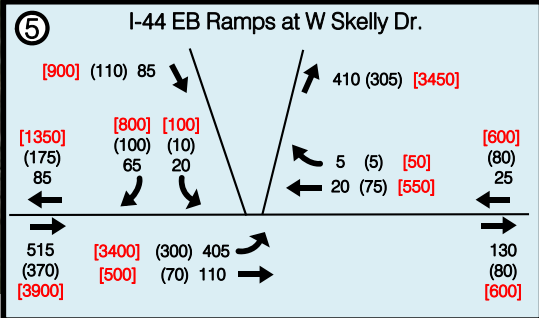
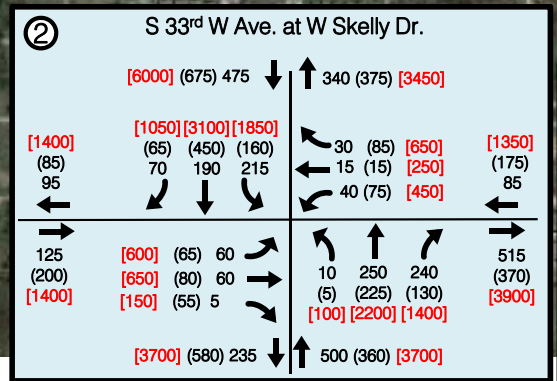
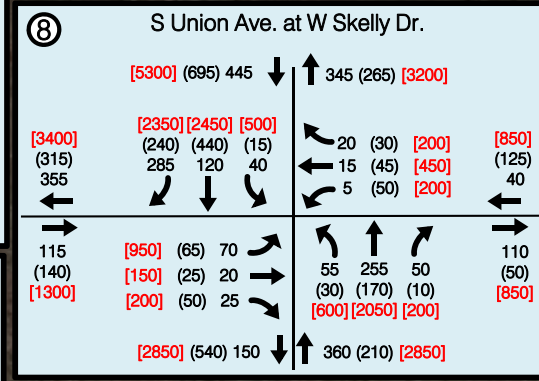
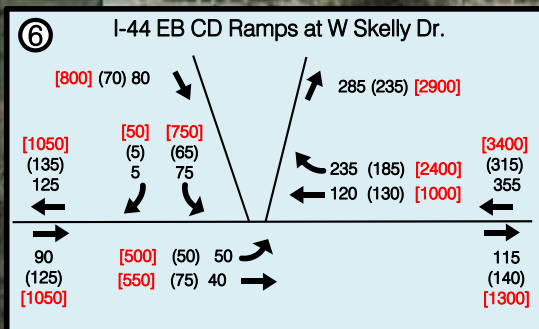
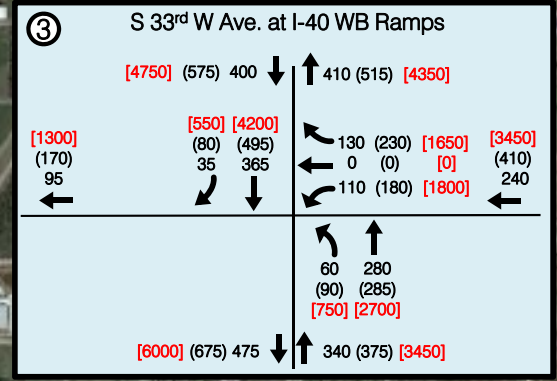
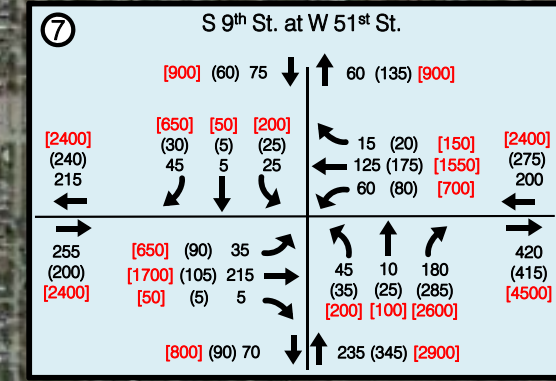
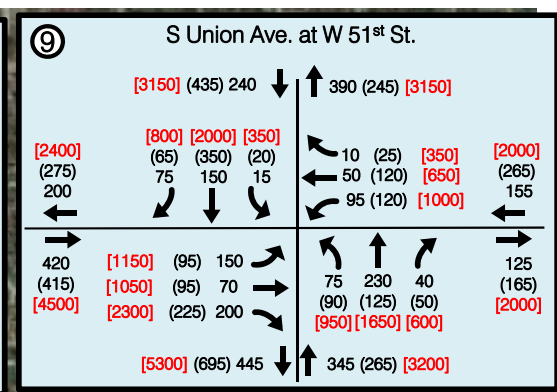
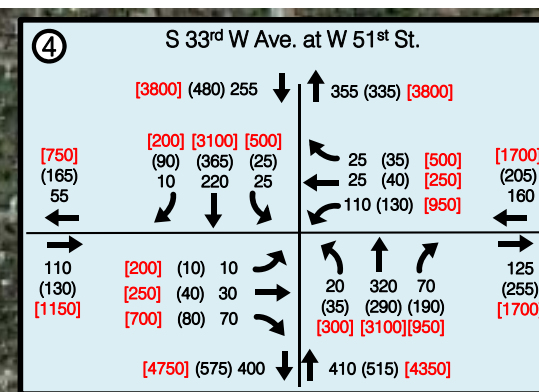
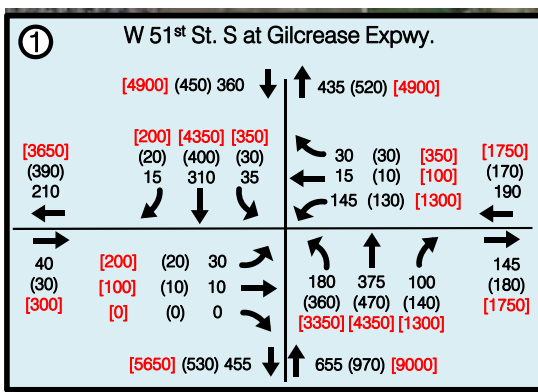
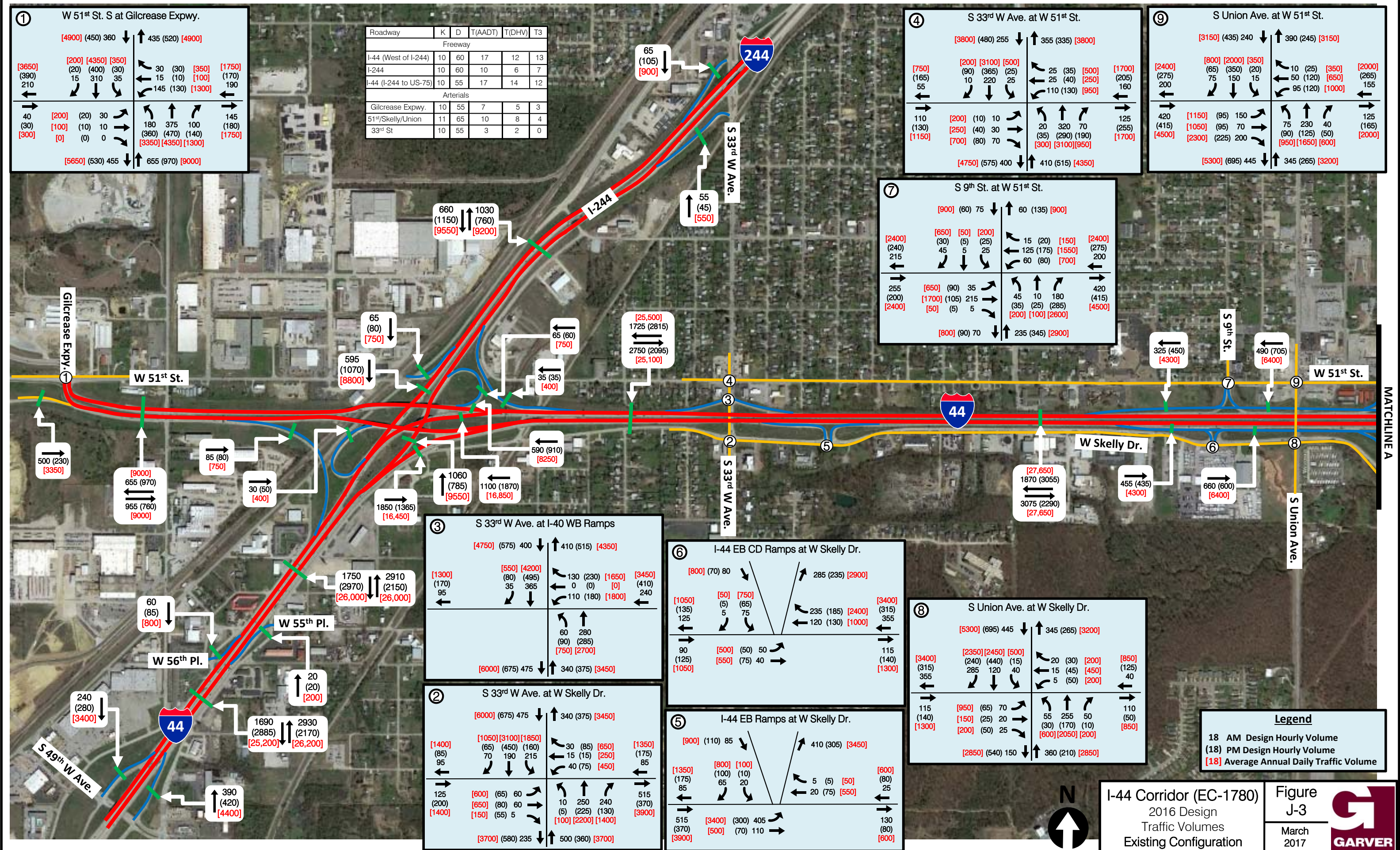
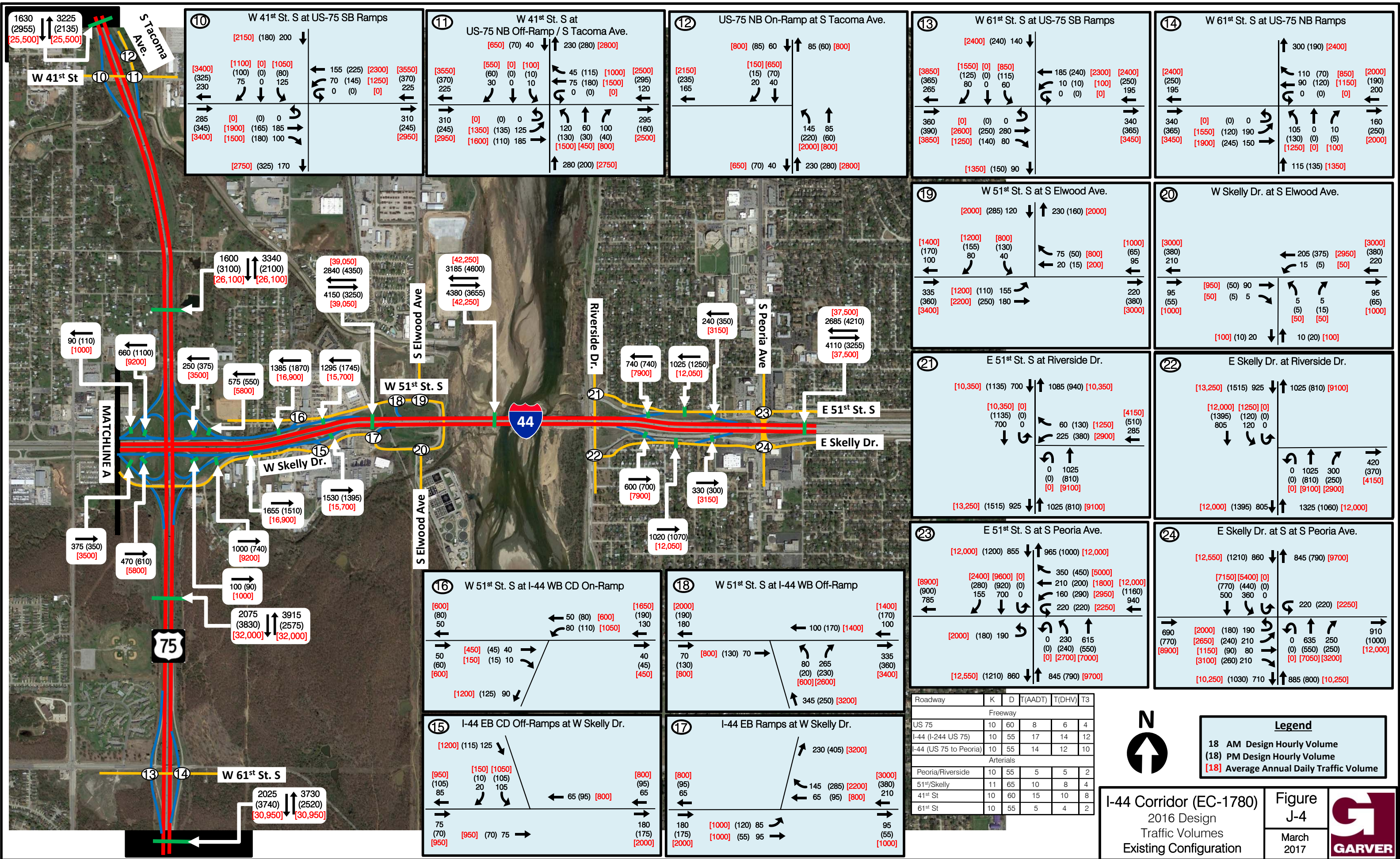


Roadway	K	D	T(AADT)	T(DHV)	T3
Freeway					
I-44 (West of I-244)	10	60	17	12	13
I-244	10	60	10	6	7
I-44 (I-244 to US-75)	10	55	17	14	12
Arterials					
Gilcrease Expwy.	10	55	7	5	3
51st/Skelly/Union	11	65	10	8	4
33rd St	10	55	3	2	0



Legend
 18 AM Design Hourly Volume
 (18) PM Design Hourly Volume
 [18] Average Annual Daily Traffic Volume





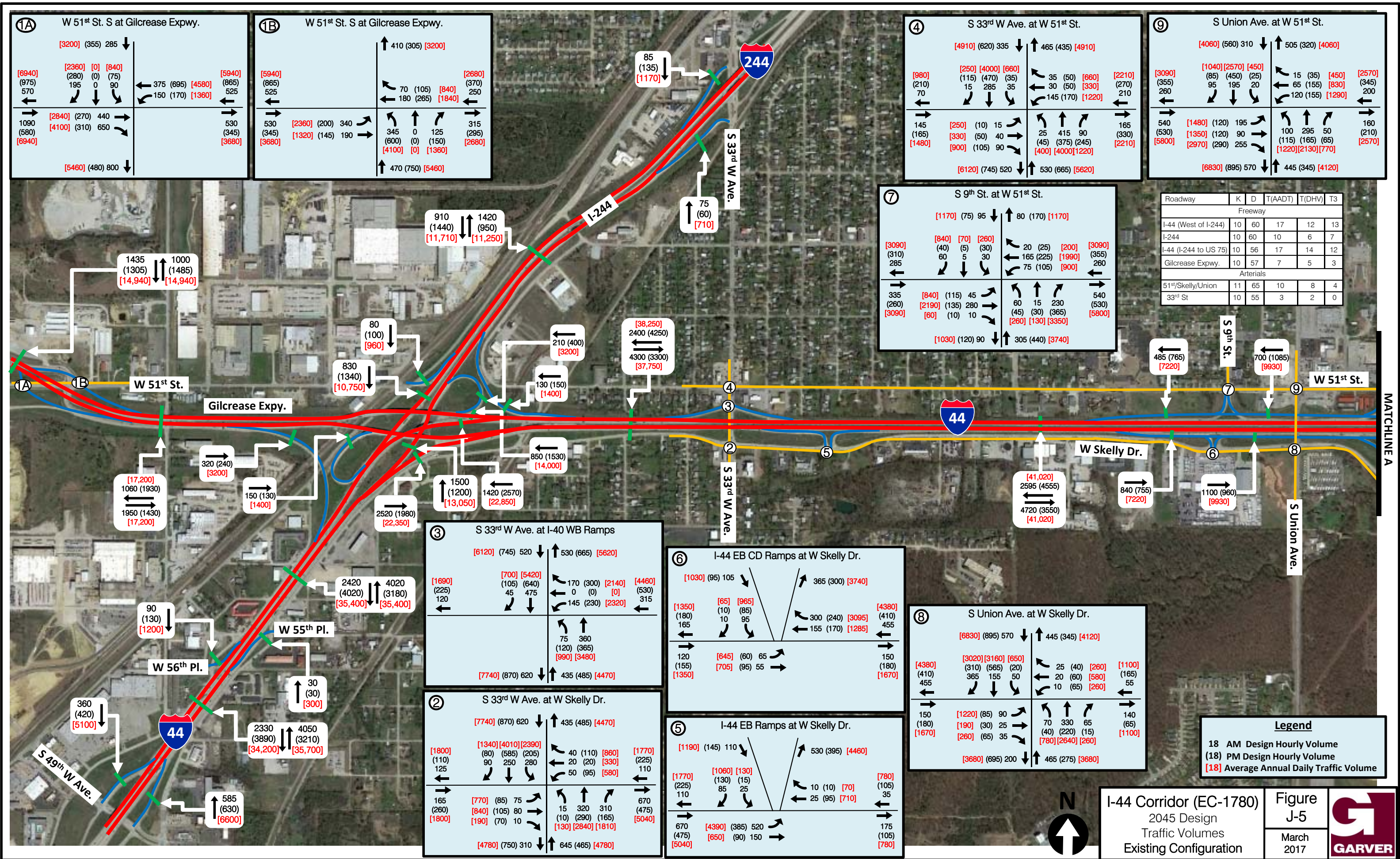
Roadway	K	D	T(AADT)	T(DHV)	T3
Freeway					
US 75	10	60	8	6	4
I-44 (I-244 US 75)	10	55	17	14	12
I-44 (US 75 to Peoria)	10	55	14	12	10
Arterials					
Peoria/Riverside	10	55	5	5	2
51st/Skelly	11	65	10	8	4
41st St	10	60	15	10	8
61st St	10	55	5	4	2



Legend
 18 AM Design Hourly Volume
 18 PM Design Hourly Volume
 18 Average Annual Daily Traffic Volume

I-44 Corridor (EC-1780)
 2016 Design
 Traffic Volumes
 Existing Configuration

Figure
 J-4
 March
 2017



1A W 51st St. S at Gilcrease Expwy.

[3200] (355) 285 ↓			
[6940] (975) 570 ←	[2360] (280) 195 ↓	[0] (0) 0 ↓	[840] (75) 90 ↓
		375 (695) [4580] ←	[5940] (865) 525 ←
1090 (580) [6940] →	[2840] (270) 440 →		530 (345) [3680] →
			[5460] (480) 800 ↓

1B W 51st St. S at Gilcrease Expwy.

		410 (305) [3200] ↑	
[5940] (865) 525 ←			[2680] (370) 250 ←
		70 (105) [840] ←	180 (265) [1840] ←
530 (345) [3680] →	[2360] (200) 340 →		315 (295) [2680] →
	[1320] (145) 190 →	345 (600) [4100] →	0 (0) [0] →
			125 (150) [1360] →
			470 (750) [5460] ↑

4 S 33rd W Ave. at W 51st St.

		[4910] (620) 335 ↓	
[980] (210) 70 ←	[250] (115) 15 ↓	[4000] (470) 285 ↓	[660] (35) 35 ↓
		35 (50) [660] ←	[2210] (270) 210 ←
145 (165) [1480] →	[250] (10) 15 →		165 (330) [2210] →
	[330] (50) 40 →	25 (45) [400] →	415 (375) [1220] →
	[900] (105) 90 →		530 (665) [5620] ↑

9 S Union Ave. at W 51st St.

		[4060] (560) 310 ↓	
[3090] (355) 260 ←	[1040] (85) 95 ↓	[2570] (450) 195 ↓	[450] (25) 20 ↓
		15 (35) [450] ←	[2570] (345) 200 ←
540 (530) [5800] →	[1480] (120) 90 →		100 (115) [1220] →
	[1350] (290) 255 →	65 (155) [830] →	295 (165) [2130] →
		120 (155) [1290] →	50 (65) [770] →
			445 (345) [4120] ↑

Roadway	K	D	T(AADT)	T(DHV)	T3
Freeway					
I-44 (West of I-244)	10	60	17	12	13
I-244	10	60	10	6	7
I-44 (I-244 to US 75)	10	56	17	14	12
Gilcrease Expwy.	10	57	7	5	3
Arterials					
51 st /Skelly/Union	11	65	10	8	4
33 rd St	10	55	3	2	0

7 S 9th St. at W 51st St.

		[1170] (75) 95 ↓	
[3090] (310) 285 ←	[840] (40) 60 ↓	[70] (5) 5 ↓	[260] (30) 30 ↓
		20 (25) [200] ←	[3090] (355) 260 ←
335 (260) [3090] →	[840] (115) 45 →		540 (530) [5800] →
	[2190] (135) 280 →	60 (45) [260] →	15 (30) [3350] →
	[60] (10) 10 →		305 (440) [3740] ↑

3 S 33rd W Ave. at I-40 WB Ramps

		[6120] (745) 520 ↓	
[1690] (225) 120 ←	[700] (105) 45 ↓	[5420] (640) 475 ↓	
		170 (300) [2140] ←	[4460] (530) 315 ←
		145 (230) [2320] ←	
			75 (120) [990] →
			360 (365) [3480] →
			435 (485) [4470] ↑

6 I-44 EB CD Ramps at W Skelly Dr.

		[1030] (95) 105 ↓	
[1350] (180) 165 ←	[65] (10) 10 ↓	[965] (85) 95 ↓	
		300 (240) [3095] ←	[4380] (410) 455 ←
120 (155) [1350] →	[645] (60) 65 →		150 (180) [1670] →
	[705] (95) 55 →		

8 S Union Ave. at W Skelly Dr.

		[6830] (895) 570 ↓	
[4380] (410) 455 ←	[3020] (310) 365 ↓	[3160] (565) 155 ↓	[650] (20) 50 ↓
		25 (40) [260] ←	[1100] (165) 55 ←
150 (180) [1670] →	[1220] (85) 90 →		140 (65) [1100] →
	[190] (30) 25 →	70 (40) [780] →	330 (220) [2640] →
	[260] (65) 35 →		65 (15) [260] →
			465 (275) [3680] ↑

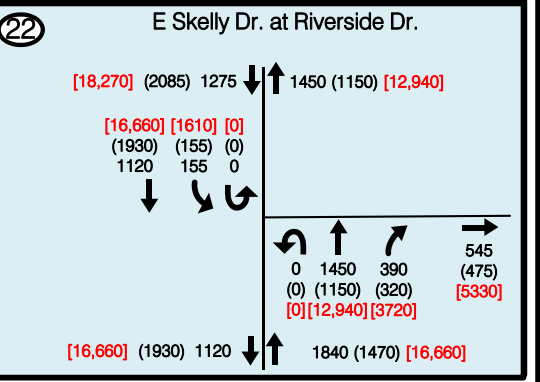
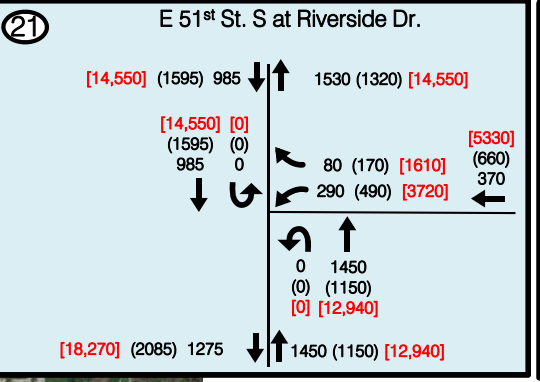
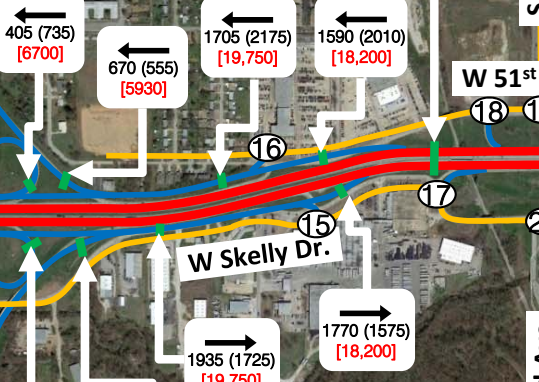
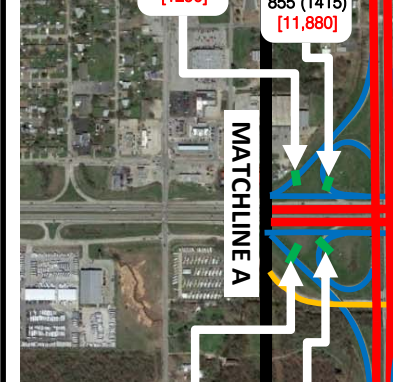
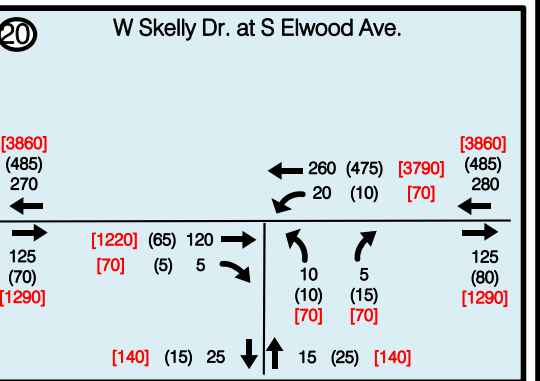
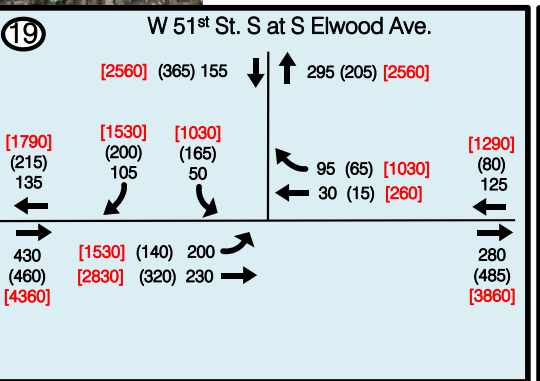
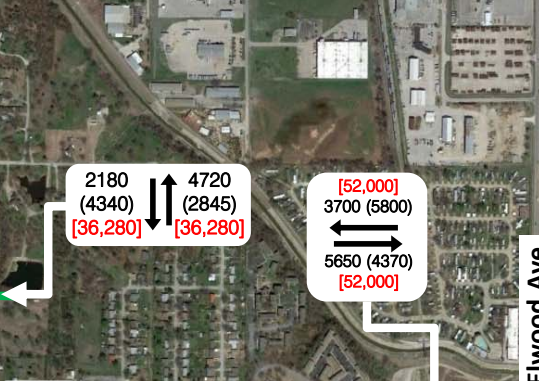
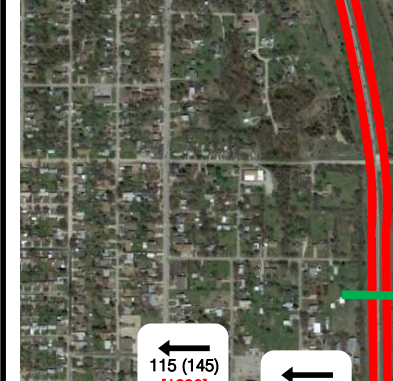
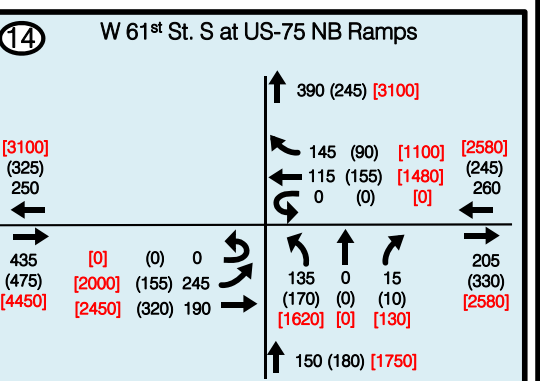
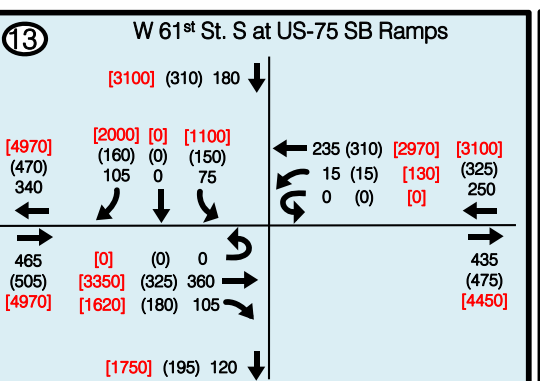
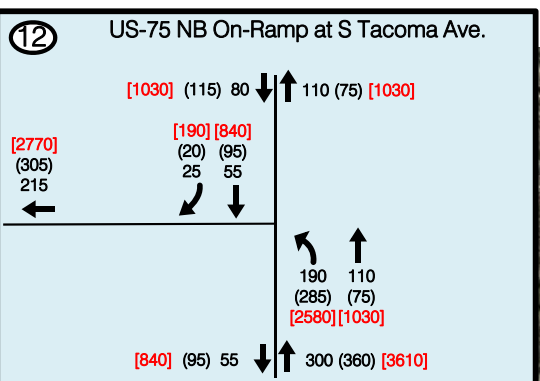
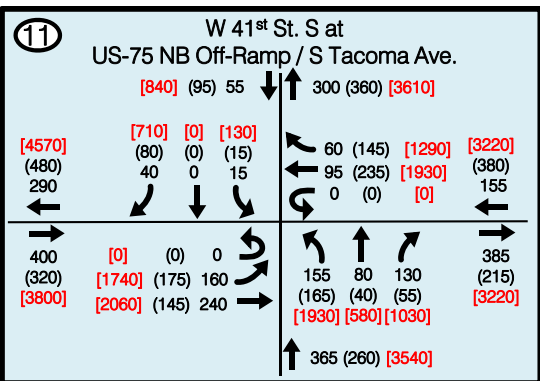
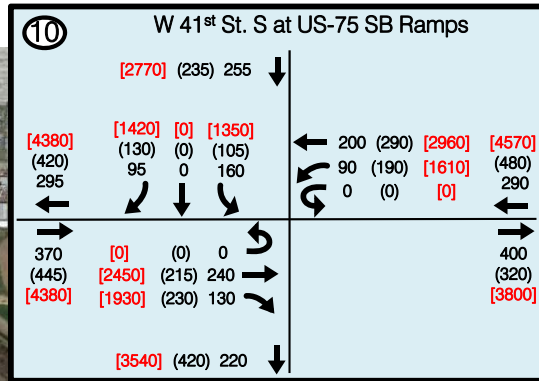
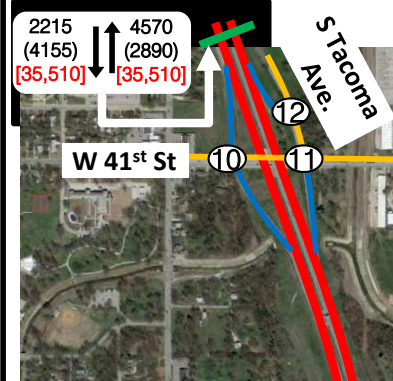
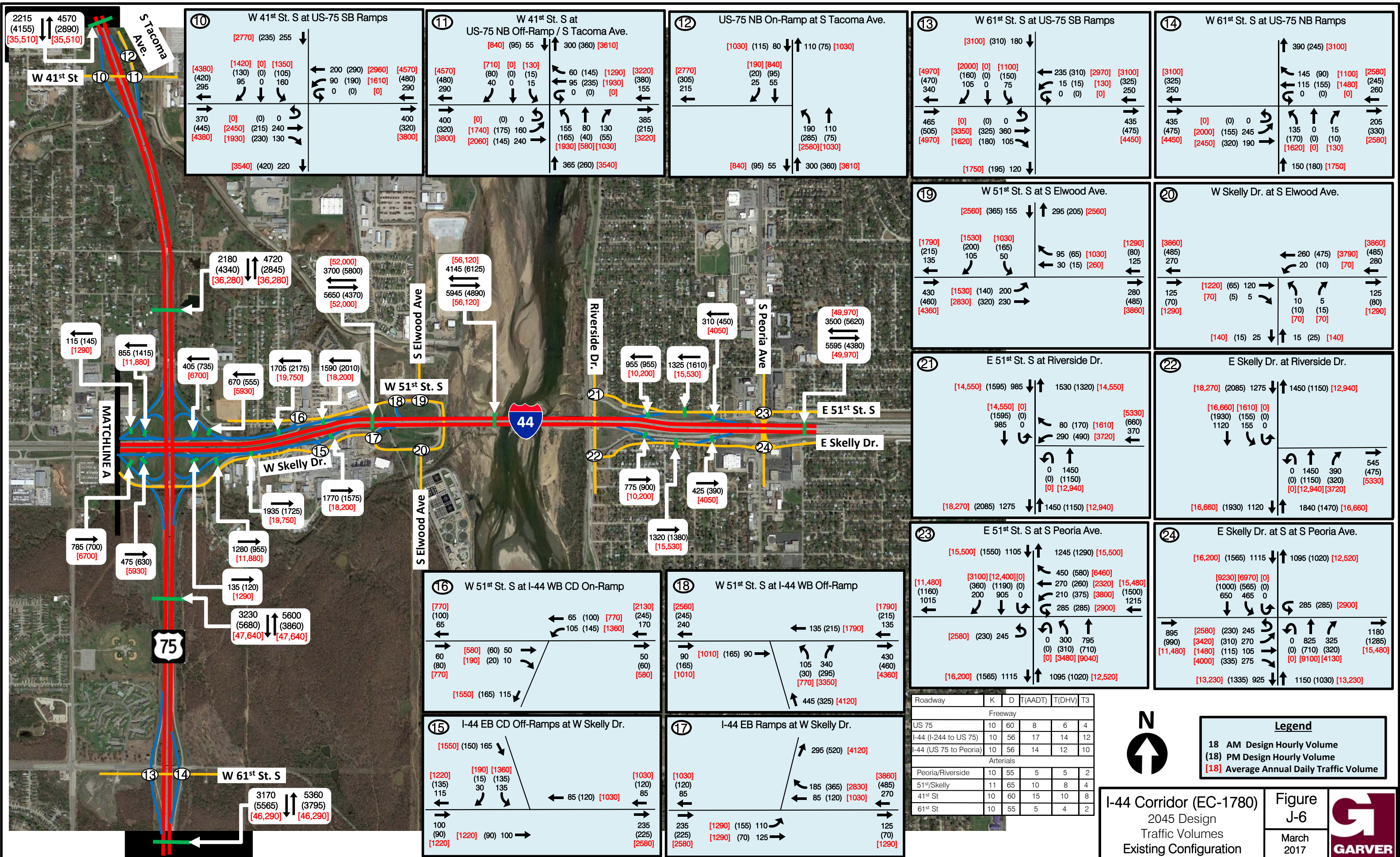
2 S 33rd W Ave. at W Skelly Dr.

		[7740] (870) 620 ↓	
[1800] (110) 125 ←	[1340] (80) 90 ↓	[4010] (585) 250 ↓	[2390] (205) 280 ↓
		40 (110) [860] ←	[1770] (225) 110 ←
		20 (20) [330] ←	
		50 (95) [580] ←	
165 (260) [1800] →	[770] (85) 75 →		670 (475) [5040] →
	[840] (105) 80 →	15 (10) [130] →	320 (290) [2840] →
	[190] (70) 10 →		165 (165) [1810] →
			645 (465) [4780] ↑

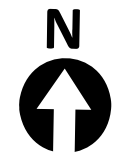
5 I-44 EB Ramps at W Skelly Dr.

		[1190] (145) 110 ↓	
[1770] (225) 110 ←	[1060] (130) 85 ↓	[130] (15) 25 ↓	
		530 (395) [4460] ←	[780] (105) 35 ←
670 (475) [5040] →	[4390] (385) 520 →		10 (10) [70] →
	[650] (90) 150 →		25 (95) [710] →

Legend
 18 AM Design Hourly Volume
 (18) PM Design Hourly Volume
 [18] Average Annual Daily Traffic Volume

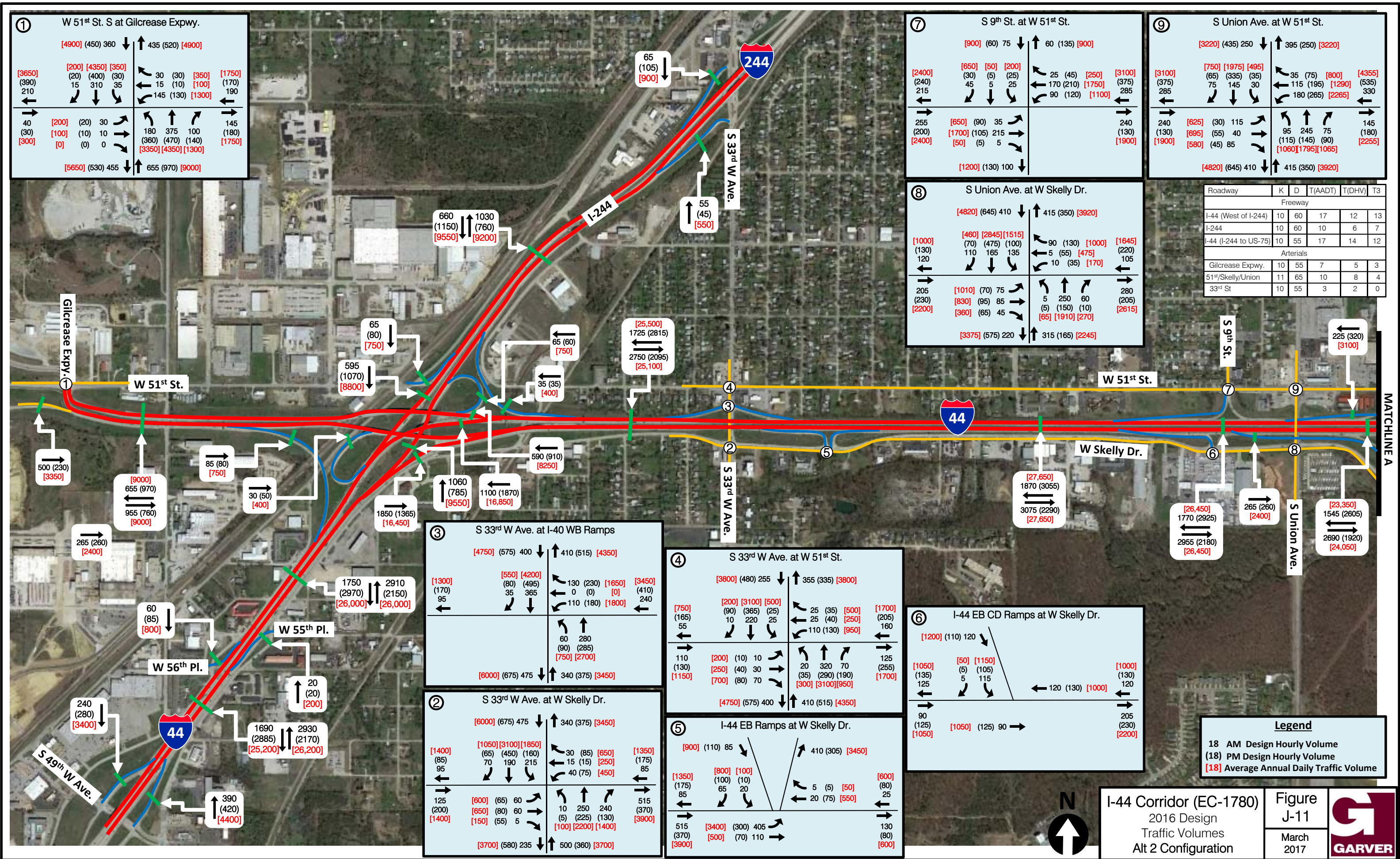


Roadway	K	D	T(AADT)	T(DHV)	T3
Freeway					
US 75	10	60	8	6	4
I-44 (I-244 to US 75)	10	56	17	14	12
I-44 (US 75 to Peoria)	10	56	14	12	10
Arterials					
Peoria/Riverside	10	55	5	5	2
51st/Skelly	11	65	10	8	4
41st St	10	60	15	10	8
61st St	10	55	5	4	2



Legend

18 AM Design Hourly Volume
 (18) PM Design Hourly Volume
 [18] Average Annual Daily Traffic Volume



1 W 51st St. S at Gilcrease Expwy.

[4900] (450) 360 ↓ ↑ 435 (520) [4900]

[3650] (390) 210 ← → [200] (20) 15 ↓ [4350] (400) 310 ↓ [350] (30) 35 ↓

← 30 (30) [350] (170) [1750] (170) [1300] (130) [1300] (130) →

← 145 (130) [1300] (130) →

← 40 (30) [200] (100) [300] (300) →

← 180 (360) 375 (470) 100 (140) →

← 145 (180) [1750] (170) [1300] (130) →

← 655 (970) [9000] (9000) →

[5650] (530) 455 ↓

7 S 9th St. at W 51st St.

[900] (60) 75 ↓ ↑ 60 (135) [900]

[2400] (240) 215 ← → [650] (30) 45 ↓ [50] (5) 5 ↓ [200] (25) 25 ↓

← 25 (45) [250] (375) [3100] (375) [285] (285) →

← 170 (210) [1750] (1700) [1100] (1100) →

← 90 (120) [1100] (1100) →

← 255 (200) [2400] (2400) →

← 240 (130) [1900] (1900) →

← [1200] (130) 100 ↓

9 S Union Ave. at W 51st St.

[3220] (435) 250 ↓ ↑ 395 (250) [3220]

[3100] (375) 285 ← → [750] (65) 75 ↓ [1975] (335) 145 ↓ [495] (35) 30 ↓

← 35 (75) [800] (1290) [4355] (535) [330] (330) →

← 115 (195) [1290] (1290) [2265] (2265) →

← 180 (265) [2265] (2265) →

← 240 (130) [1900] (1900) →

← [625] (30) 115 ↓ [695] (55) 40 ↓ [580] (45) 85 ↓

← 95 (115) 245 (145) 75 (90) →

← [1060] [1795] [1065] (1065) →

← 145 (180) [2255] (2255) →

← [4820] (645) 410 ↓

← 415 (350) [3920] (3920) →

Roadway	K	D	T(AADT)	T(DHV)	T3
Freeway					
I-44 (West of I-244)	10	60	17	12	13
I-244	10	60	10	6	7
I-44 (I-244 to US-75)	10	55	17	14	12
Arterials					
Gilcrease Expwy.	10	55	7	5	3
51st/Skelly/Union	11	65	10	8	4
33rd St	10	55	3	2	0

8 S Union Ave. at W Skelly Dr.

[4820] (645) 410 ↓ ↑ 415 (350) [3920]

[1000] (130) 120 ← → [460] (70) 110 ↓ [2845] (475) 165 ↓ [1515] (100) 135 ↓

← 90 (130) [1000] (1000) [1645] (220) [105] (105) →

← 5 (55) [475] (475) [170] (170) →

← 10 (35) [170] (170) →

← 205 (230) [2200] (2200) →

← [1010] (70) 75 ↓ [830] (95) 85 ↓ [360] (65) 45 ↓

← 5 (5) 250 (150) 60 (10) →

← [65] [1910] [270] (1910) →

← [3375] (575) 220 ↓

← 315 (165) [2245] (2245) →

3 S 33rd W Ave. at I-40 WB Ramps

[4750] (575) 400 ↓ ↑ 410 (515) [4350]

[1300] (170) 95 ← → [550] (80) 35 ↓ [4200] (495) 365 ↓

← 130 (230) [1650] (410) [3450] (410) [240] (240) →

← 110 (180) [1800] (1800) →

← 60 (90) 280 (285) →

← [750] [2700] (2700) →

← [6000] (675) 475 ↓

← 340 (375) [3450] (3450) →

4 S 33rd W Ave. at W 51st St.

[3800] (480) 255 ↓ ↑ 355 (335) [3800]

[750] (165) 55 ← → [200] (90) 10 ↓ [3100] (365) 220 ↓ [500] (25) 25 ↓

← 25 (35) [500] (205) [1700] (205) [160] (160) →

← 25 (40) [250] (250) [950] (950) →

← 110 (130) [950] (950) →

← 110 (130) [1150] (1150) →

← [200] (10) 10 ↓ [250] (40) 30 ↓ [700] (80) 70 ↓

← 20 (35) 70 (190) →

← [300] [3100] [950] (3100) [950] (950) →

← [4750] (575) 400 ↓

← 410 (515) [4350] (4350) →

6 I-44 EB CD Ramps at W Skelly Dr.

[1200] (110) 120 ↓

[1050] (135) 125 ← → [50] (5) 5 ↓ [1150] (105) 115 ↓

← 120 (130) [1000] (1000) [120] (120) →

← 90 (125) [1050] (1050) [90] (90) →

← 205 (230) [2200] (2200) →

2 S 33rd W Ave. at W Skelly Dr.

[6000] (675) 475 ↓ ↑ 340 (375) [3450]

[1400] (85) 95 ← → [1050] (65) 70 ↓ [3100] (450) 190 ↓ [1850] (215) 215 ↓

← 30 (85) [650] (175) [1350] (175) [85] (85) →

← 15 (15) [250] (250) [450] (450) →

← 40 (75) [450] (450) →

← 125 (200) [1400] (1400) →

← [600] (65) 60 ↓ [650] (80) 60 ↓ [150] (55) 5 ↓

← 10 (5) 250 (225) 240 (130) →

← [100] [2200] [1400] (100) [2200] (2200) [1400] (1400) →

← [3700] (580) 235 ↓

← 500 (360) [3700] (3700) →

5 I-44 EB Ramps at W Skelly Dr.

[900] (110) 85 ↓

[1350] (175) 85 ← → [800] (100) 65 ↓ [100] (10) 20 ↓

← 5 (5) [50] (50) [80] (80) [25] (25) →

← 20 (75) [550] (550) →

← 515 (370) [3900] (3900) →

← [3400] (300) 405 ↓ [500] (70) 110 ↓

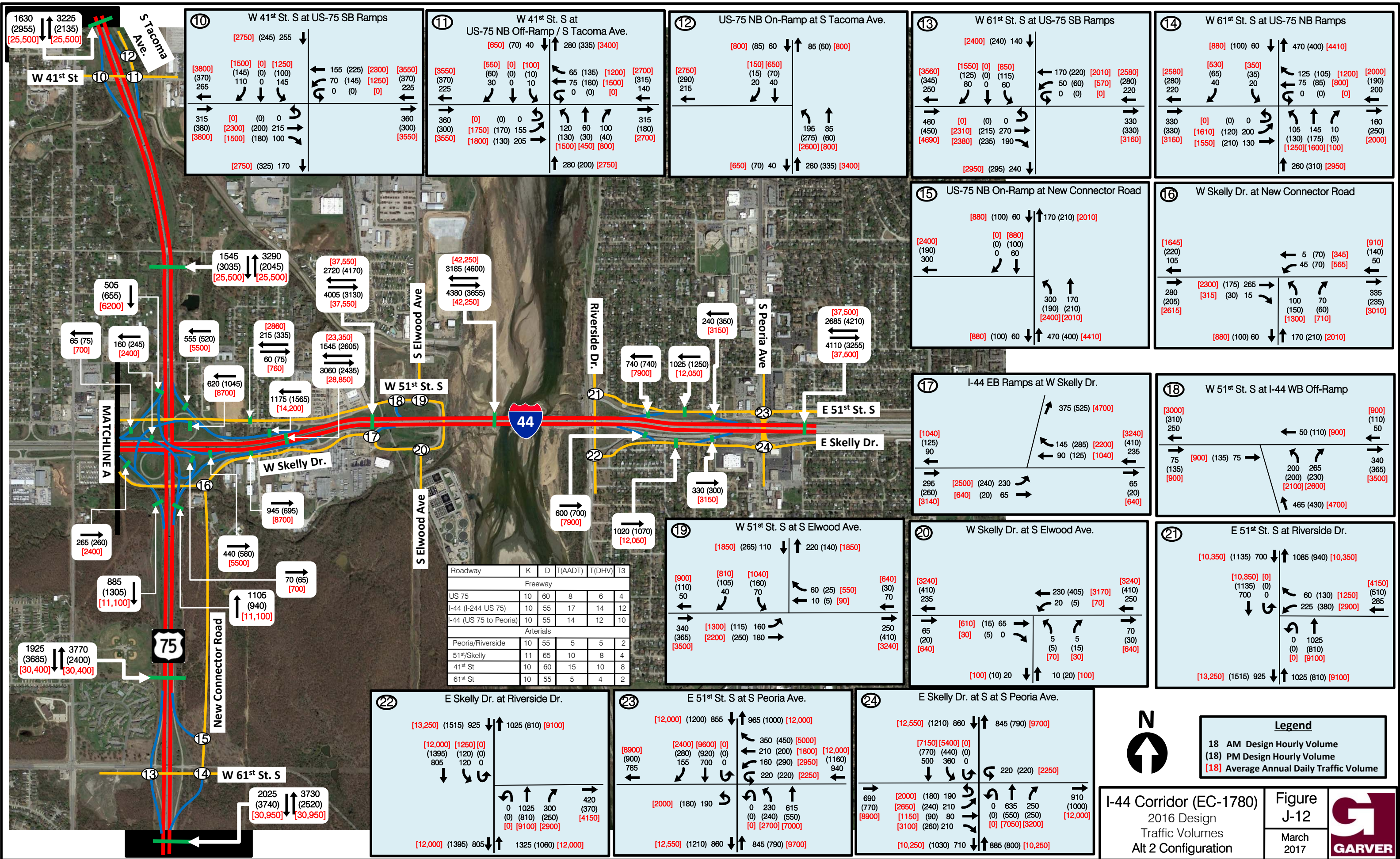
← 130 (80) [600] (600) →

Legend

18 AM Design Hourly Volume

(18) PM Design Hourly Volume

[18] Average Annual Daily Traffic Volume



10 W 41st St. S at US-75 SB Ramps

[2750] (245) 255 ↓

[3800] [1500] [0] [1250] ↑

[370] (145) (0) (100) ↓

265 110 0 145 ↓

155 (225) [2300] [3550] ↑

70 (145) [1250] (370) ↓

0 (0) [0] 225 ↓

315 [0] (0) 0 ↓

[3800] [2300] (200) 215 ↓

[3800] [1500] (180) 100 ↓

[2750] (325) 170 ↓

11 W 41st St. S at US-75 NB Off-Ramp / S Tacoma Ave.

[650] (70) 40 ↓

[3550] [550] [0] [100] ↑

[370] (60) (0) (10) ↓

225 30 0 10 ↓

65 (135) [1200] [2700] ↑

75 (180) [1500] (315) ↓

0 (0) [0] 140 ↓

360 [0] (0) 0 ↓

[3550] [1750] (170) 155 ↓

[3550] [1800] (130) 205 ↓

[1500] [450] [800] ↑

120 60 100 ↓

(130) (30) (40) ↓

[1500] [450] [800] ↑

280 (200) [2750] ↑

12 US-75 NB On-Ramp at S Tacoma Ave.

[800] (85) 60 ↓

[2750] [150] [650] ↑

(290) (15) (70) ↓

215 20 40 ↓

85 (60) [800] ↑

195 85 ↓

(275) (60) [2800] [800] ↑

[650] (70) 40 ↓

280 (335) [3400] ↑

13 W 61st St. S at US-75 SB Ramps

[2400] (240) 140 ↓

[3560] [1550] [0] [850] ↑

(345) (125) (0) (115) ↓

250 80 0 60 ↓

170 (220) [2010] [2580] ↑

50 (60) [570] (280) ↓

0 (0) [0] 220 ↓

460 [0] (0) 0 ↓

[450] [2310] (215) 270 ↓

[4690] [2380] (235) 190 ↓

[2950] (295) 240 ↓

330 (330) [3160] ↑

14 W 61st St. S at US-75 NB Ramps

[880] (100) 60 ↓

[2580] [530] [350] ↑

(280) (65) (35) ↓

220 40 20 ↓

125 (105) [1200] [2000] ↑

75 (85) [800] (190) ↓

0 (0) [0] 200 ↓

330 [0] (0) 0 ↓

[330] [1610] (120) 200 ↓

[3160] [1550] (210) 130 ↓

[1250] [1600] [100] ↑

105 145 10 ↓

(130) (175) (5) ↓

[1250] [1600] [100] ↑

160 (250) [2000] ↑

260 (310) [2950] ↑

15 US-75 NB On-Ramp at New Connector Road

[880] (100) 60 ↓

[2400] [0] [880] ↑

(190) (0) (100) ↓

300 0 60 ↓

170 (210) [2010] ↑

300 170 ↓

(190) (210) [2400] [2010] ↑

[880] (100) 60 ↓

470 (400) [4410] ↑

16 W Skelly Dr. at New Connector Road

[1645] [910] ↑

(220) (140) ↓

105 50 ↓

5 (70) [345] (190) ↓

45 (70) [565] (280) ↓

[2300] (175) 265 ↓

[315] (30) 15 ↓

100 70 ↓

(150) (60) [1300] [710] ↑

280 (205) [2615] ↑

335 (235) [3010] ↑

[880] (100) 60 ↓

170 (210) [2010] ↑

17 I-44 EB Ramps at W Skelly Dr.

375 (525) [4700] ↑

[1040] [3240] ↑

(125) (90) ↓

90 235 ↓

145 (285) [2200] (410) ↓

90 (125) [1040] (235) ↓

295 [2500] (240) 230 ↓

(260) [640] (20) 65 ↓

[3140] (65) [640] ↑

18 W 51st St. S at I-44 WB Off-Ramp

[3000] [900] ↑

(310) (110) ↓

250 50 ↓

50 (110) [900] (900) ↑

75 [900] (135) 75 ↓

200 265 ↓

(200) (230) [2100] [2600] ↑

340 (365) [3500] ↑

465 (430) [4700] ↑

19 W 51st St. S at S Elwood Ave.

[1850] (265) 110 ↓

[900] [810] [1040] ↑

(110) (105) (160) ↓

50 40 70 ↓

60 (25) [550] [640] ↑

10 (5) [90] (30) ↓

340 [1300] (115) 160 ↓

(365) [2200] (250) 180 ↓

[3500] (250) [3240] ↑

20 W Skelly Dr. at S Elwood Ave.

[3240] [3240] ↑

(410) (410) ↓

235 250 ↓

230 (405) [3170] (410) ↓

20 (5) [70] (250) ↓

65 [610] (15) 65 ↓

(20) [30] (5) 0 ↓

5 5 ↓

(5) (15) [70] [30] ↑

[100] (10) 20 ↓

10 (20) [100] ↑

21 E 51st St. S at Riverside Dr.

[10,350] (1135) 700 ↓

[10,350] [0] [4150] ↑

(1135) (0) ↓

700 0 ↓

60 (130) [1250] (510) ↓

225 (380) [2900] (285) ↓

0 1025 ↓

(0) (810) [0] [9100] ↑

[13,250] (1515) 925 ↓

1025 (810) [9100] ↑

22 E Skelly Dr. at Riverside Dr.

[13,250] (1515) 925 ↓

[12,000] [1250] [0] ↑

(1395) (120) (0) ↓

805 120 0 ↓

0 1025 300 ↓

(0) (810) (250) [4150] ↑

[0] [9100] [2900] ↑

[12,000] (1395) 805 ↓

1325 (1060) [12,000] ↑

23 E 51st St. S at S Peoria Ave.

[12,000] (1200) 855 ↓

[8900] [2400] [9600] [0] ↑

(900) (280) (920) (0) ↓

785 155 700 0 ↓

350 (450) [5000] [12,000] ↑

210 (200) [1800] (1160) ↓

220 (220) [2250] (940) ↓

[2000] (180) 190 ↓

[12,550] (1210) 860 ↓

845 (790) [9700] ↑

24 E Skelly Dr. at S Peoria Ave.

[12,550] (1210) 860 ↓

[7150] [5400] [0] ↑

(770) (440) (0) ↓

500 360 0 ↓

220 (220) [2250] ↑

690 [2000] (180) 190 ↓

(770) [2650] (240) 210 ↓

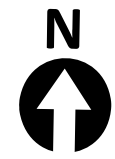
[8900] [1150] (90) 80 ↓

[3100] (260) 210 ↓

[10,250] (1030) 710 ↓

885 (800) [10,250] ↑

Roadway	K	D	T(AADT)	T(DHV)	T3
Freeway					
US 75	10	60	8	6	4
I-44 (I-244 US 75)	10	55	17	14	12
I-44 (US 75 to Peoria)	10	55	14	12	10
Arterials					
Peoria/Riverside	10	55	5	5	2
51 st /Skelly	11	65	10	8	4
41 st St	10	60	15	10	8
61 st St	10	55	5	4	2

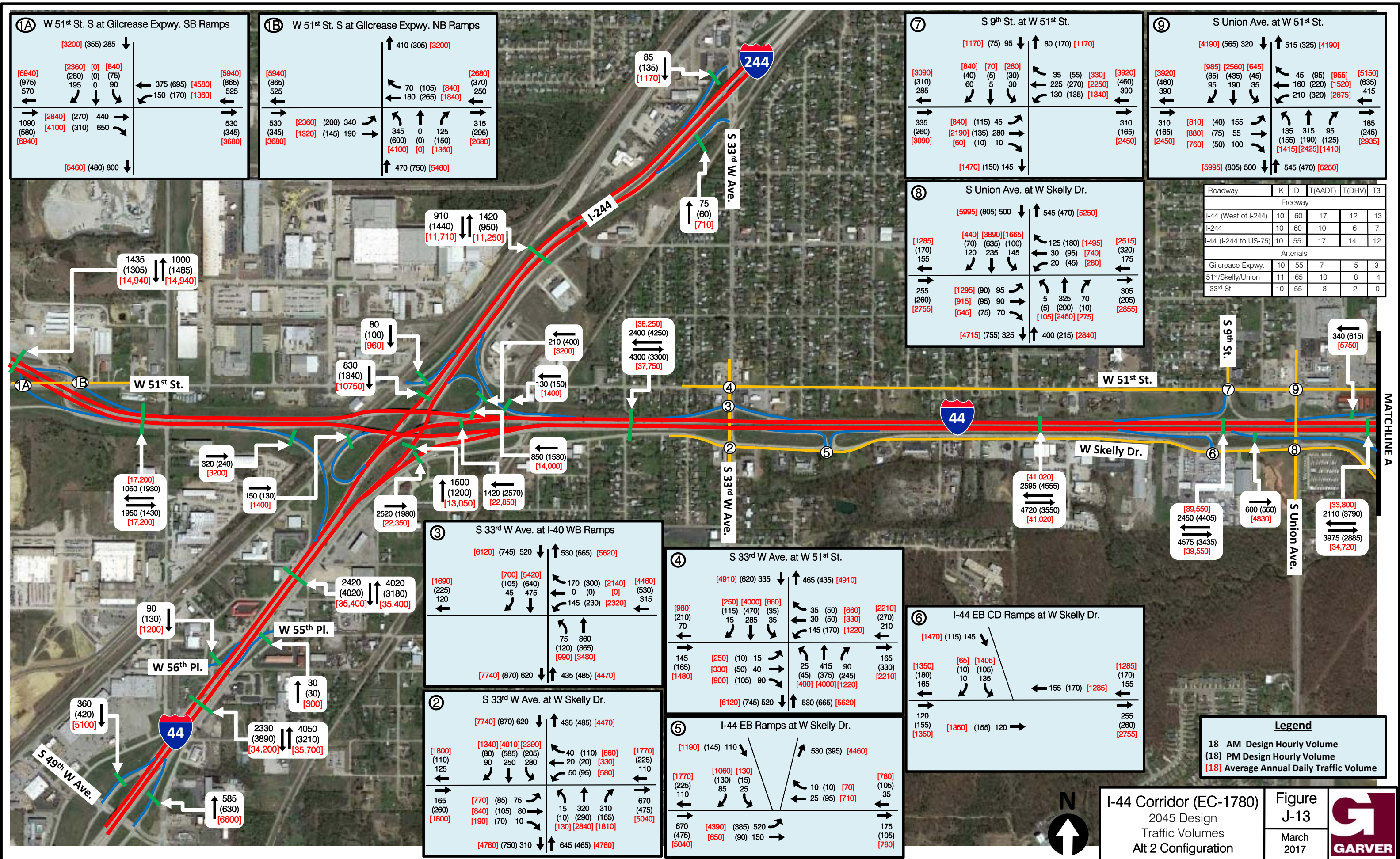


Legend

18 AM Design Hourly Volume

(18) PM Design Hourly Volume

[18] Average Annual Daily Traffic Volume



(A) W 51st St. S at Gilcrease Expwy. SB Ramps

[3200] (355) 285 ↓					
[6940] (975) 570 ←	[2360] (280) 195 ↓	[0] (0) 0 ↓	[840] (75) 90 ↓		[5940] (865) 525 →
1090 (580) [6940] ←	[2840] (270) 440 →				530 (345) [3680] →
					[5460] (480) 800 ↓

(B) W 51st St. S at Gilcrease Expwy. NB Ramps

					[2680] (370) 250 →
530 (345) [3680] ←	[2360] (200) 340 →				315 (295) [2680] →
					[5460] (750) 470 ↑

(7) S 9th St. at W 51st St.

					[3920] (460) 390 →
[3090] (310) 285 ←	[840] (40) 60 ↓	[70] (5) 5 ↓	[260] (30) 30 ↓		310 (165) [2450] →
					[1470] (150) 145 ↓

(9) S Union Ave. at W 51st St.

					[5150] (635) 415 →
[3920] (460) 390 ←	[985] (85) 95 ↓	[2560] (435) 190 ↓	[645] (45) 35 ↓		185 (245) [2935] →
					[5995] (805) 500 ↓

Roadway	K	D	T(AADT)	T(DHV)	T3
Freeway					
I-44 (West of I-244)	10	60	17	12	13
I-244	10	60	10	6	7
I-44 (I-244 to US-75)	10	55	17	14	12
Arterials					
Gilcrease Expwy.	10	55	7	5	3
51st/Skelly/Union	11	65	10	8	4
33rd St	10	55	3	2	0

(8) S Union Ave. at W Skelly Dr.

					[2515] (320) 175 →
[1285] (170) 155 ←	[440] (70) 120 ↓	[3890] (635) 235 ↓	[1665] (100) 145 ↓		305 (205) [2855] →
					[4715] (755) 325 ↓

(3) S 33rd W Ave. at I-40 WB Ramps

					[4460] (530) 315 →
[1690] (225) 120 ←	[700] (105) 45 ↓	[5420] (640) 475 ↓			530 (665) [5620] →
					[7740] (870) 620 ↓

(4) S 33rd W Ave. at W 51st St.

					[2210] (270) 210 →
[980] (210) 70 ←	[250] (115) 15 ↓	[4000] (470) 285 ↓	[660] (35) 35 ↓		165 (330) [2210] →
					[6120] (745) 520 ↓

(6) I-44 EB CD Ramps at W Skelly Dr.

					[1285] (170) 155 →
[1350] (180) 165 ←	[65] (10) 10 ↓	[1405] (105) 135 ↓			255 (260) [2755] →
					[1350] (155) 120 ↓

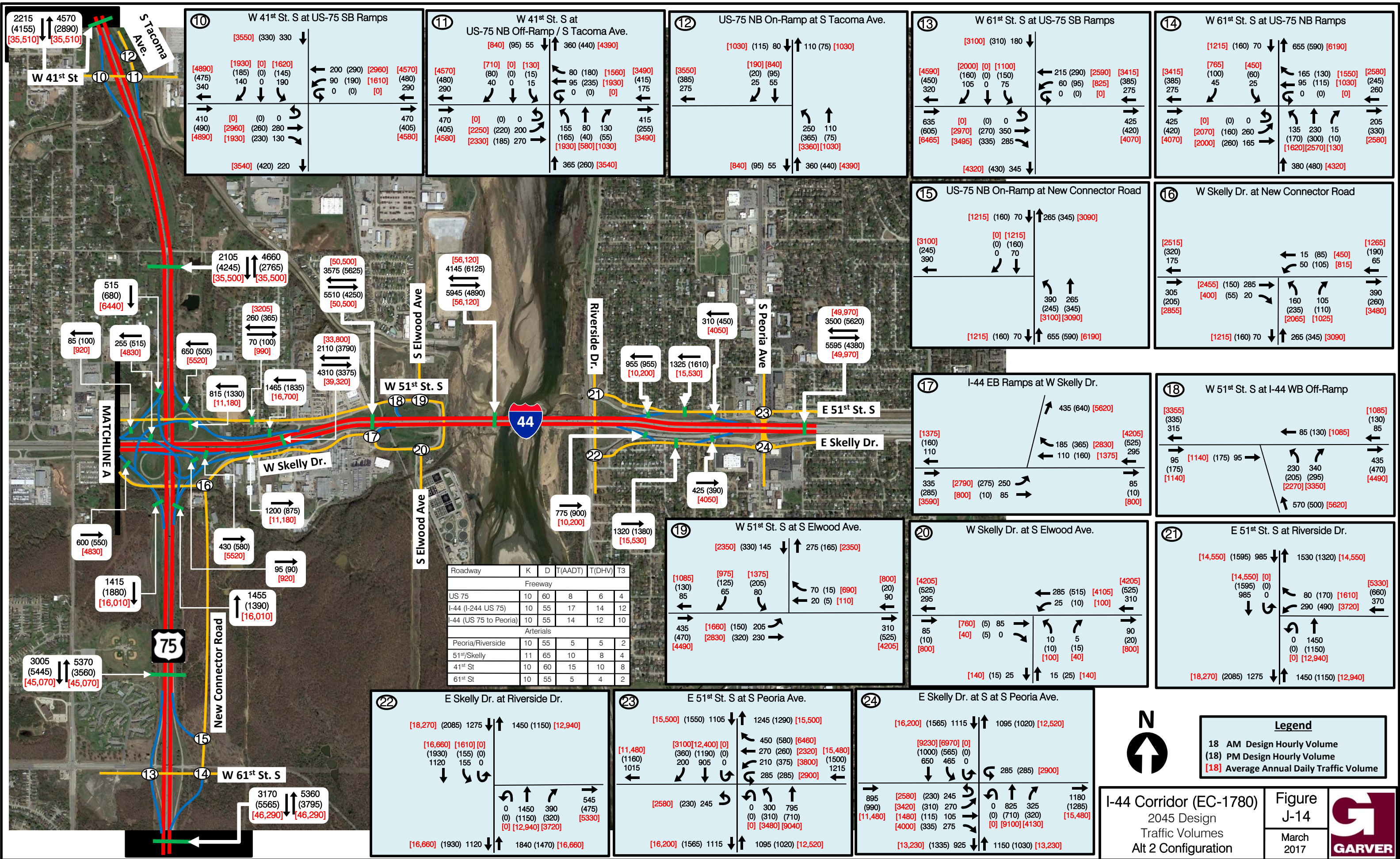
(2) S 33rd W Ave. at W Skelly Dr.

					[1770] (225) 110 →
[1800] (110) 125 ←	[1340] (80) 90 ↓	[4010] (585) 250 ↓	[2390] (205) 280 ↓		670 (475) [5040] →
					[4780] (750) 310 ↓

(5) I-44 EB Ramps at W Skelly Dr.

					[780] (105) 35 →
[1770] (225) 110 ←	[1060] (130) 85 ↓	[130] (15) 25 ↓			175 (105) [780] →
					[5040] (475) 670 ↓

Legend
 18 AM Design Hourly Volume
 (18) PM Design Hourly Volume
 [18] Average Annual Daily Traffic Volume



10 W 41st St. S at US-75 SB Ramps

[3550] (330) 330 ↓

[4890] [1930] [0] [1620] ← 200 (290) [2960] [4570] (475) (185) (0) (145) (480) (480) (480) 140 0 190 90 (190) [1610] 290 0 (0) [0] 0 470 (405) [4580]

410 (490) [0] (0) 0 → 470 (405) [4580]

[2960] (260) 280 → [1930] (230) 130 →

[3540] (420) 220 ↓

11 W 41st St. S at US-75 NB Off-Ramp / S Tacoma Ave.

[840] (95) 55 ↑ 360 (440) [4390]

[4570] [710] [0] [130] ← 80 (180) [1560] [3490] (480) (80) (0) (15) (415) (415) 290 40 0 15 95 (235) [1930] 175 0 (0) [0] 0 415 (255) [3490]

470 (405) [0] (0) 0 → 155 80 130 (165) (40) (55) [1930] [580] [1030] [4580] [2330] (185) 270 → [365] (260) [3540]

12 US-75 NB On-Ramp at S Tacoma Ave.

[1030] (115) 80 ↓ 110 (75) [1030]

[3550] [190] [840] ← (385) (20) (95) (275) 25 55

250 110 (365) (75) [3360] [1030]

[840] (95) 55 ↓ 360 (440) [4390]

13 W 61st St. S at US-75 SB Ramps

[3100] (310) 180 ↓

[4590] [2000] [0] [1100] ← 215 (290) [2590] [3415] (450) (160) (0) (150) (385) (385) 105 0 75 60 (95) [825] 275 0 (0) [0] 425 (420) [4070]

635 (605) [0] (0) 0 → 425 (420) [4070]

[2970] (270) 350 → [3495] (335) 285 →

[4320] (430) 345 ↓

14 W 61st St. S at US-75 NB Ramps

[1215] (160) 70 ↓ 655 (590) [6190]

[3415] [765] [450] ← 165 (130) [1550] [2580] (385) (100) (60) (245) (245) 45 25 95 (115) [1030] 260 0 (0) [0] 205 (330) [2580]

425 (420) [0] (0) 0 → 135 230 15 (170) (300) (10) [1620] [2570] [130] [4070] [2000] (260) 165 → [380] (480) [4320]

15 US-75 NB On-Ramp at New Connector Road

[1215] (160) 70 ↓ 265 (345) [3090]

[3100] [0] [1215] ← (245) (0) (160) (390) 0 70

390 265 (245) (345) [3100] [3090]

[1215] (160) 70 ↓ 655 (590) [6190]

16 W Skelly Dr. at New Connector Road

[2515] [1265] ← 15 (85) [450] (190) (320) (175) 50 (105) [815] 65

305 (205) [2455] (150) 285 → 160 105 (235) (110) [2065] [1025] [2855] [3480]

[1215] (160) 70 ↓ 265 (345) [3090]

17 I-44 EB Ramps at W Skelly Dr.

435 (640) [5620]

[1375] [4205] ← 185 (365) [2830] (525) (160) (110) 110 (160) [1375] 295

335 (285) [2790] (275) 250 → 85 (10) [800]

18 W 51st St. S at I-44 WB Off-Ramp

[3355] [1085] ← 85 (130) [1085] (130) (335) (315) 85

95 (175) [1140] (175) 95 → 230 340 (205) (295) [2270] [3350] 435 (470) [4490]

570 (500) [5620]

19 W 51st St. S at S Elwood Ave.

[2350] (330) 145 ↓ 275 (165) [2350]

[1085] [975] [1375] ← (130) (125) (205) (205) (205) 70 (15) [690] (20) (85) 85 20 (5) [110] 90

435 (470) [1660] (150) 205 → 310 (525) [4205]

20 W Skelly Dr. at S Elwood Ave.

[4205] [4205] ← 285 (515) [4105] (525) (525) 295 25 (10) [100] 310

85 (10) [760] (5) 85 → 10 5 (10) (15) [100] [40] [800]

[140] (15) 25 ↓ 15 (25) [140]

21 E 51st St. S at Riverside Dr.

[14,550] (1595) 985 ↓ 1530 (1320) [14,550]

[14,550] [0] ← 80 (170) [1610] (660) (1595) (0) 290 (490) [3720] 370 985 0

0 1450 (0) (1150) [0] [12,940]

[18,270] (2085) 1275 ↓ 1450 (1150) [12,940]

Roadway	K	D	T(AADT)	T(DHV)	T3
Freeway					
US 75	10	60	8	6	4
I-44 (I-244 US 75)	10	55	17	14	12
I-44 (US 75 to Peoria)	10	55	14	12	10
Arterials					
Peoria/Riverside	10	55	5	5	2
51 st /Skelly	11	65	10	8	4
41 st St	10	60	15	10	8
61 st St	10	55	5	4	2

22 E Skelly Dr. at Riverside Dr.

[18,270] (2085) 1275 ↓ 1450 (1150) [12,940]

[16,660] [1610] [0] ← (1930) (155) (0) 1120 155 0

0 1450 390 545 (0) (1150) (320) [5330] (475)

[0] [12,940] [3720]

[16,660] (1930) 1120 ↓ 1840 (1470) [16,660]

23 E 51st St. S at S Peoria Ave.

[15,500] (1550) 1105 ↓ 1245 (1290) [15,500]

[11,480] [3100] [12,400] [0] ← (1160) (360) (1190) (0) 450 (580) [6460] (1500) (1500) 200 905 0 270 (260) [2320] [15,480] 1015 1215

285 (285) [2900]

[2580] (230) 245 → 0 300 795 (0) (310) (710) [0] [3480] [9040]

[16,200] (1565) 1115 ↓ 1095 (1020) [12,520]

24 E Skelly Dr. at S at S Peoria Ave.

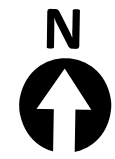
[16,200] (1565) 1115 ↓ 1095 (1020) [12,520]

[9230] [6970] [0] ← (1000) (565) (0) 650 465 0

285 (285) [2900]

895 (990) [2580] (230) 245 → 0 825 325 1180 (990) [3420] (310) 270 (0) (710) (320) [15,480] [4000] (335) 275 [0] [9100] [4130]

[13,230] (1335) 925 ↓ 1150 (1030) [13,230]



Legend

18 AM Design Hourly Volume

(18) PM Design Hourly Volume

[18] Average Annual Daily Traffic Volume