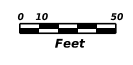


Utilities		
Utility	CONTACT	Phone Number
ONG	LEE ANN PULLIAM	405-552-1834
OEC	KOLTON HOWRY	405-217-6623
WINDSTREAM		405-228-2530
GOLDSBY WATER AUTHORITY	RONNY NELSON	405-288-6697
CENTURYLINK/LEVEL3/IRC		800-441-0223
HILL OIL COMPANY		405-273-8046
DCP MIDSTREAM		405-288-2387
WESTERN FARMERS ELECTRIC		405-247-3351
TRACE FIBER NETWORKS		844-499-5656

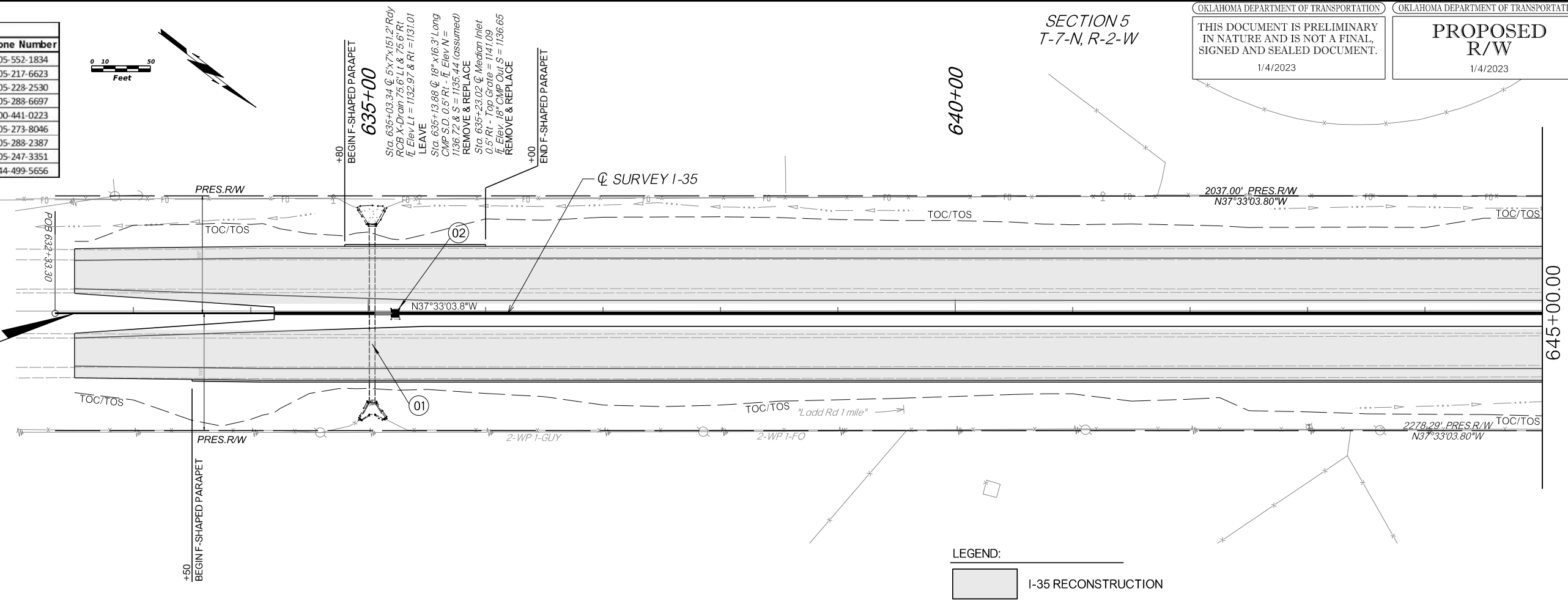


SECTION 5
T-7-N, R-2-W

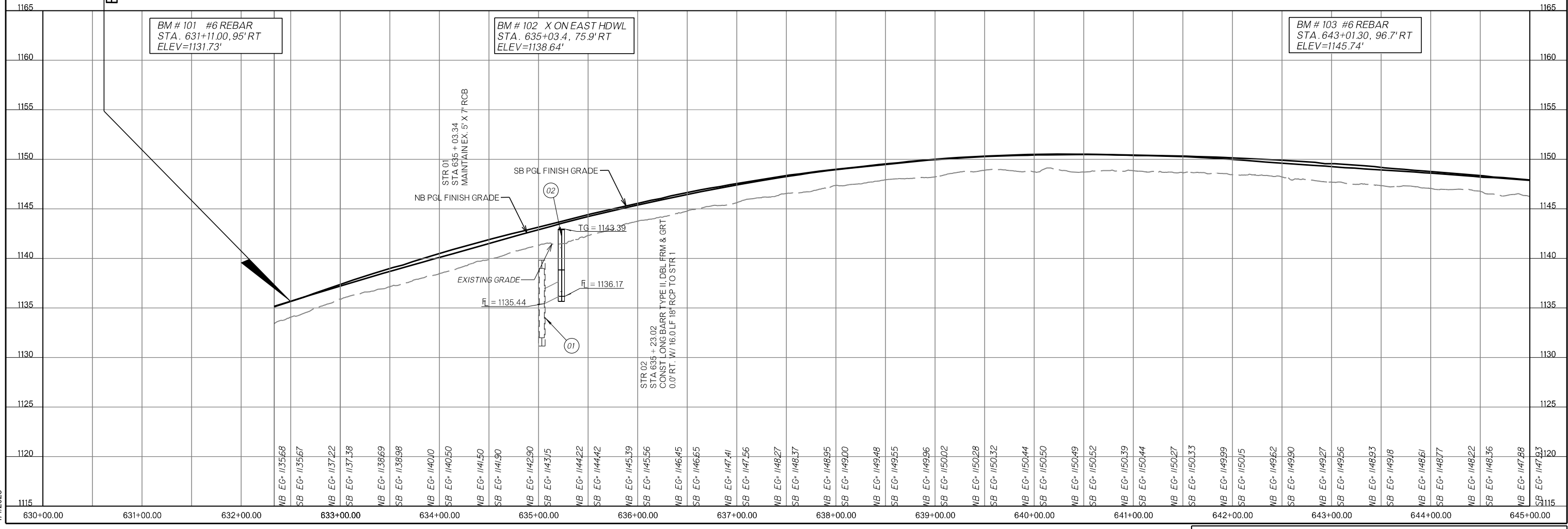
OKLAHOMA DEPARTMENT OF TRANSPORTATION
THIS DOCUMENT IS PRELIMINARY IN NATURE AND IS NOT A FINAL, SIGNED AND SEALED DOCUMENT.
1/4/2023

OKLAHOMA DEPARTMENT OF TRANSPORTATION
PROPOSED R/W
1/4/2023

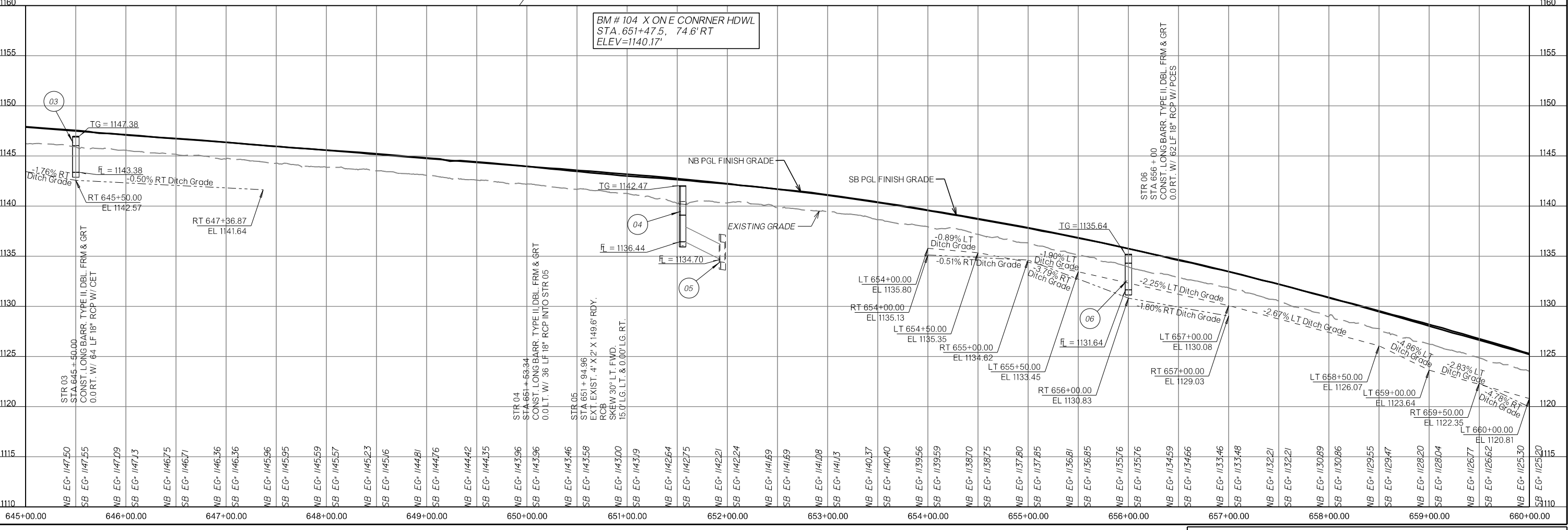
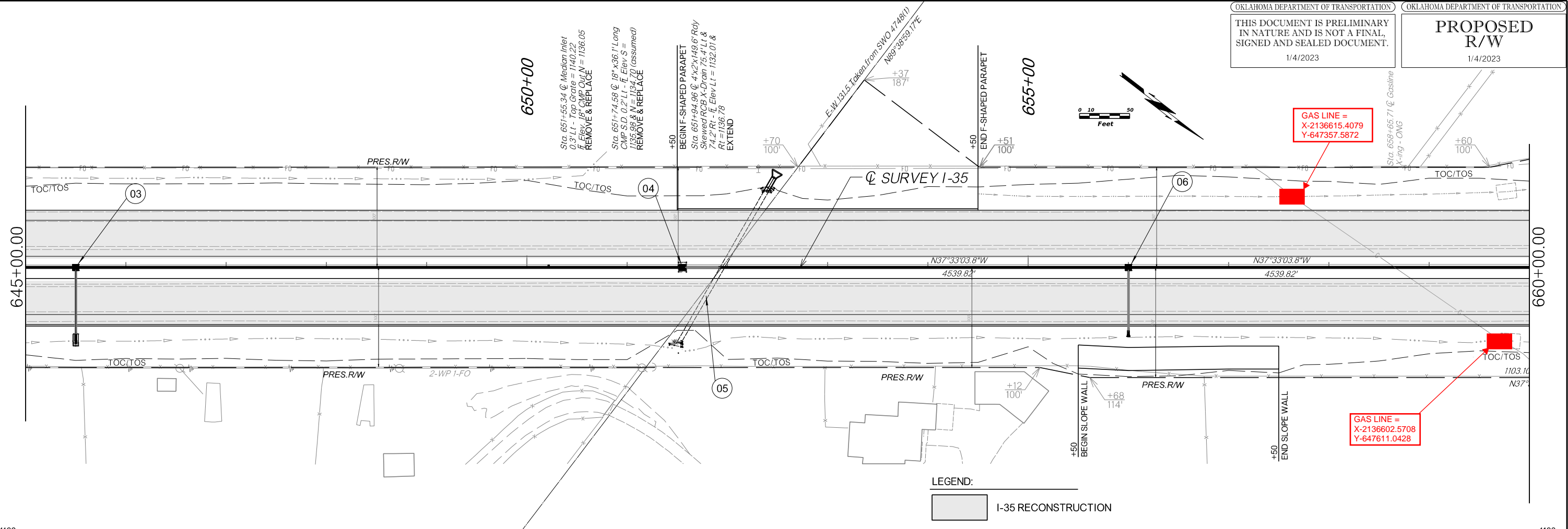
STA. 632+50.00
BEGIN CONSTRUCTION
X=2138203.5696
Y=645409.8476



LEGEND:
I-35 RECONSTRUCTION



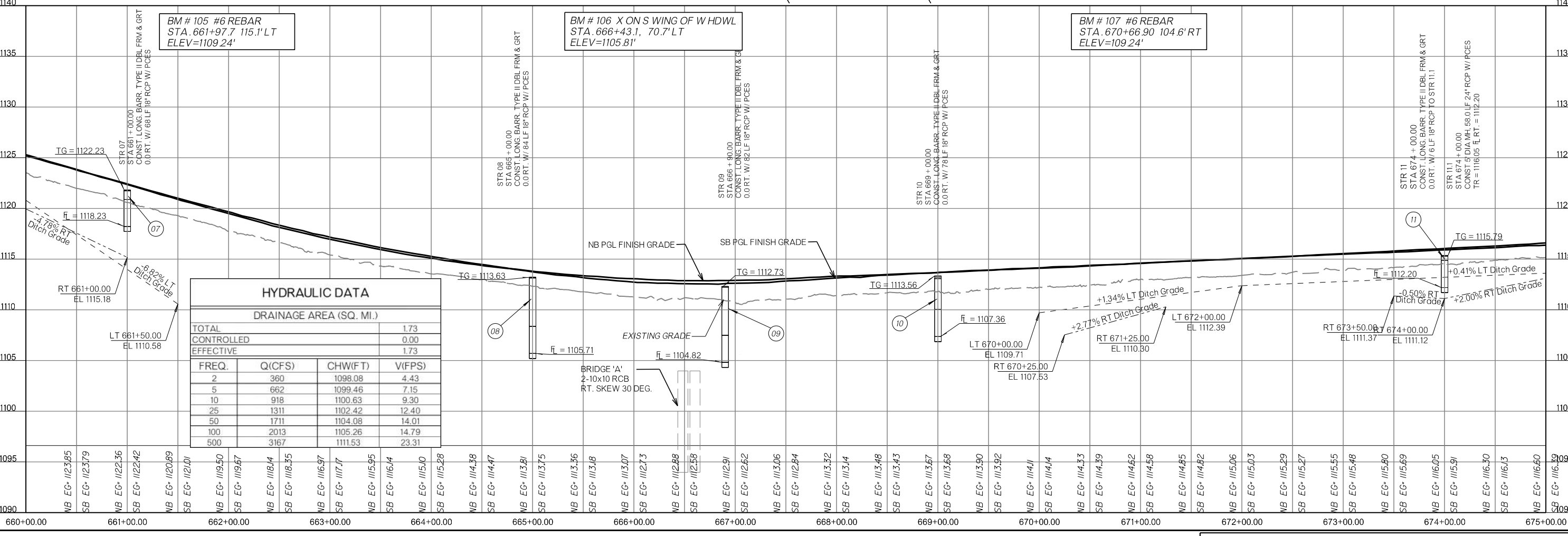
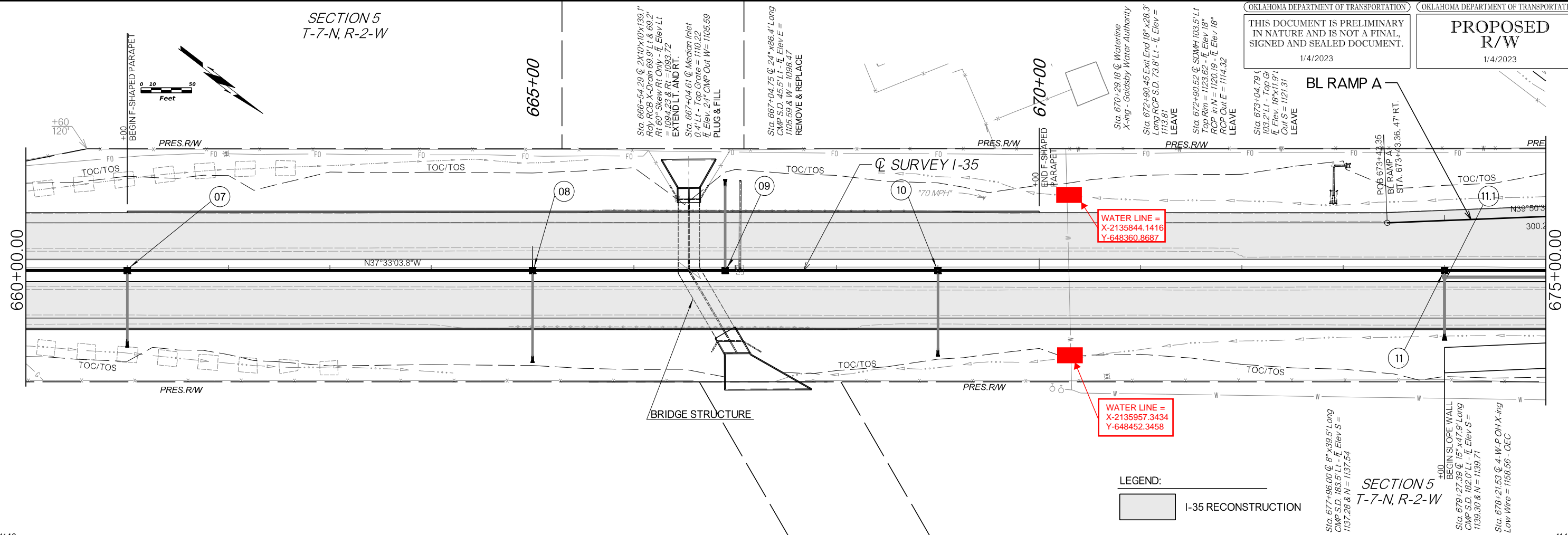
1/4/2023



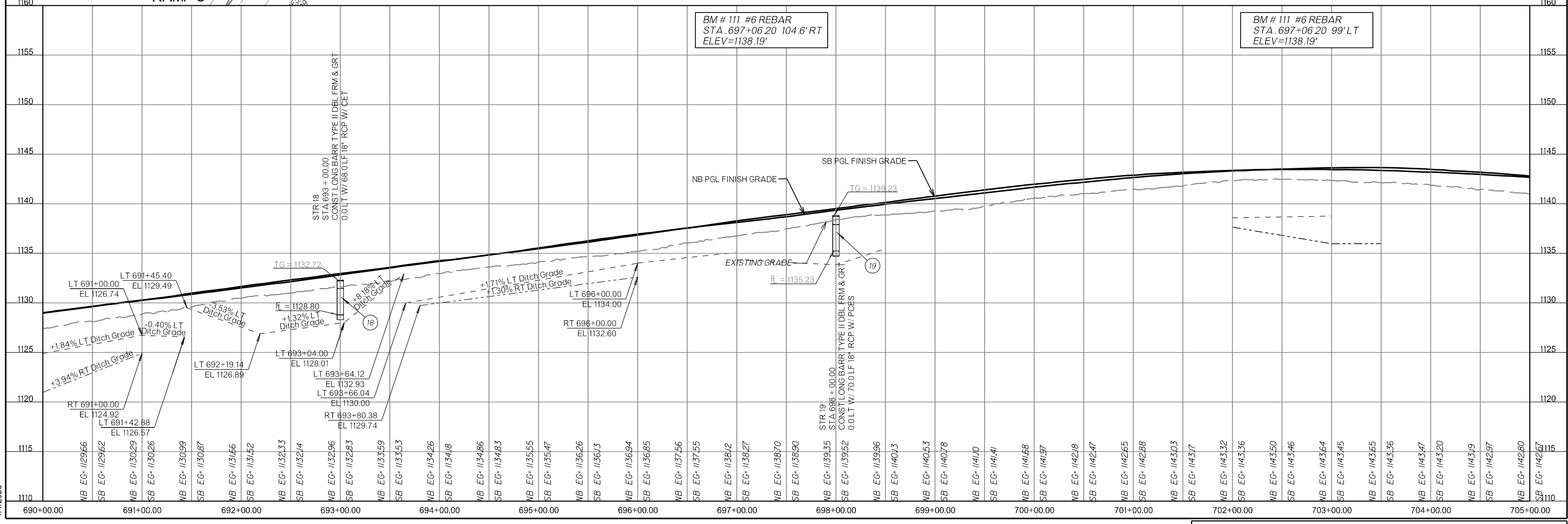
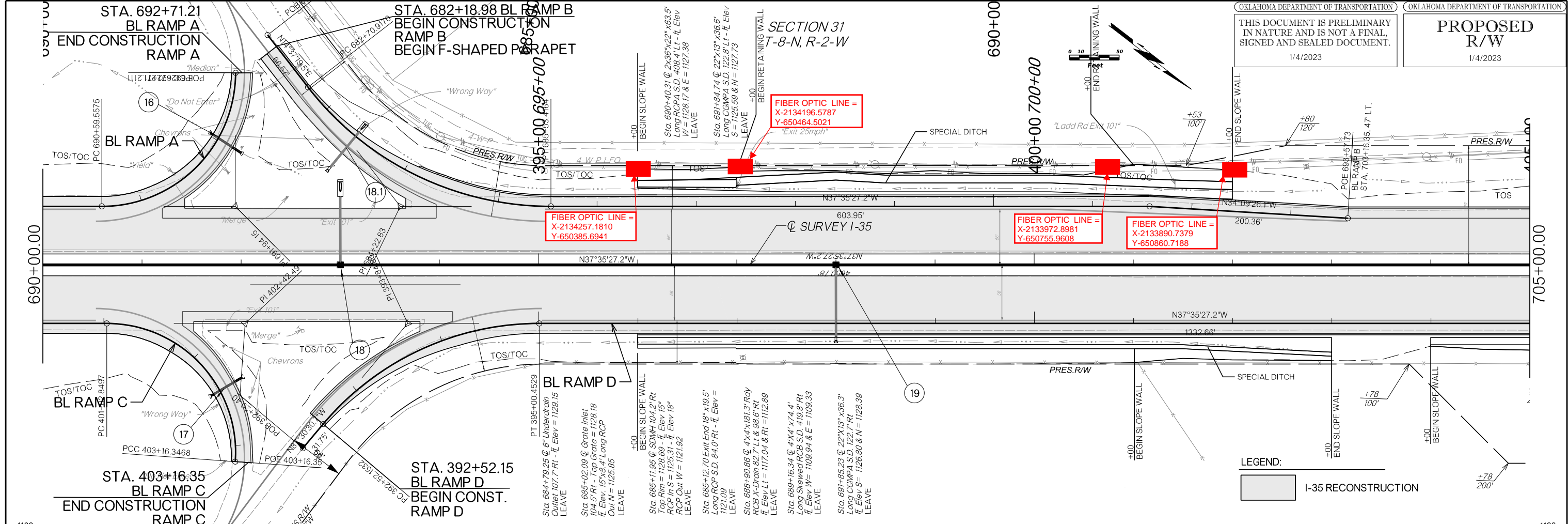
BM # 104 X ONE CORNER HDWL
 STA. 651+47.5, 74.6' RT
 ELEV=1140.17'

1/4/2023

SECTION 5
T-7-N, R-2-W



1/4/2023

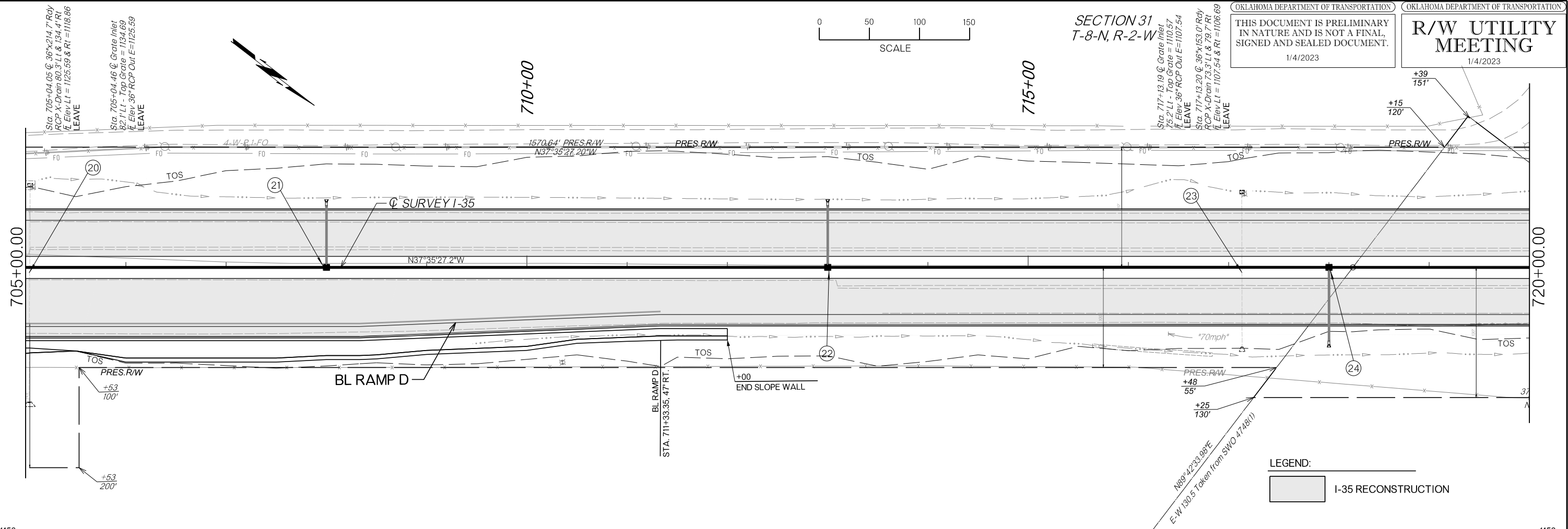




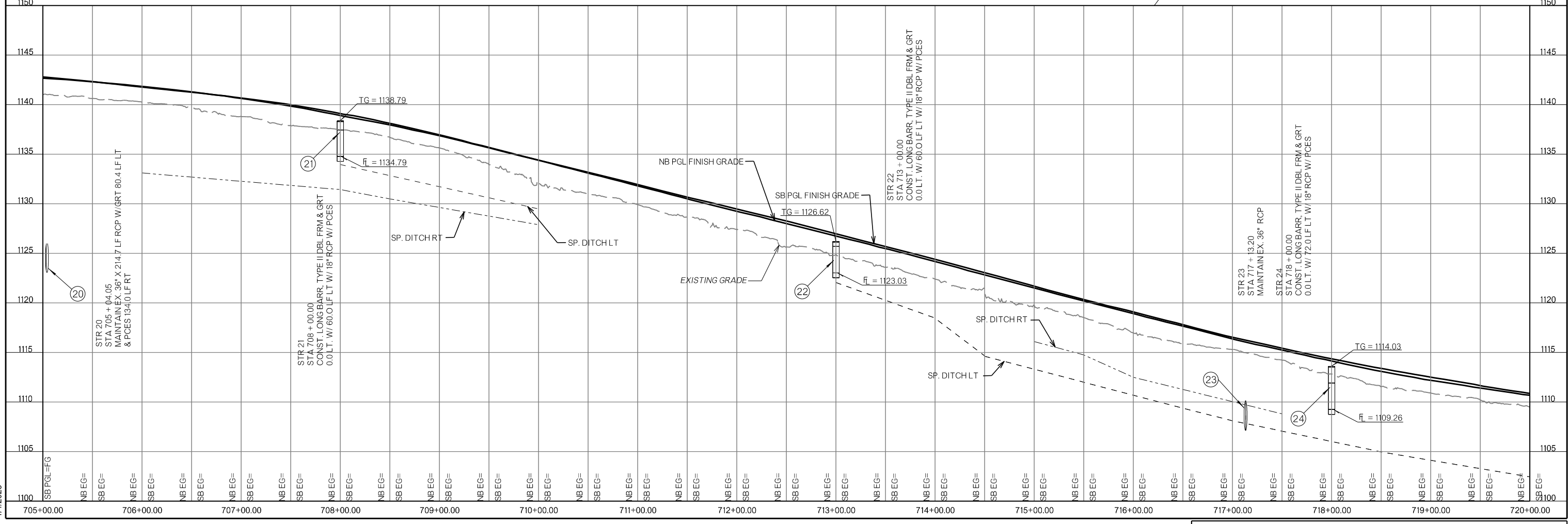
SECTION 31
T-8-N, R-2-W

OKLAHOMA DEPARTMENT OF TRANSPORTATION
THIS DOCUMENT IS PRELIMINARY
IN NATURE AND IS NOT A FINAL,
SIGNED AND SEALED DOCUMENT.
1/4/2023

OKLAHOMA DEPARTMENT OF TRANSPORTATION
**R/W UTILITY
MEETING**
1/4/2023

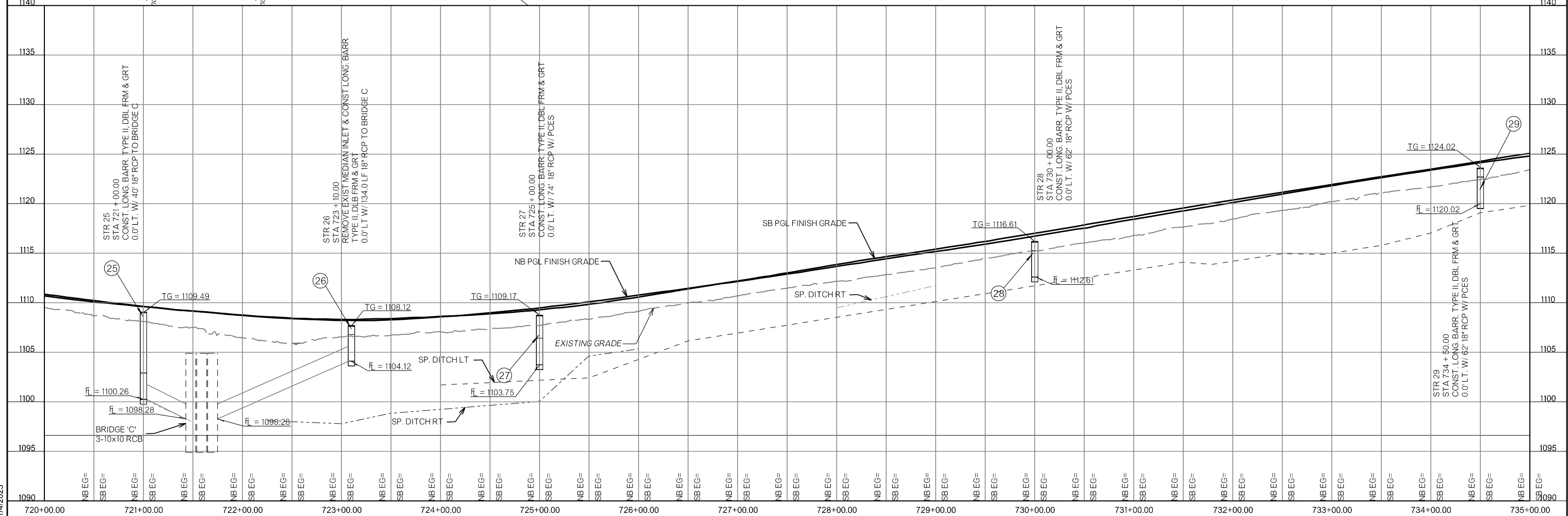
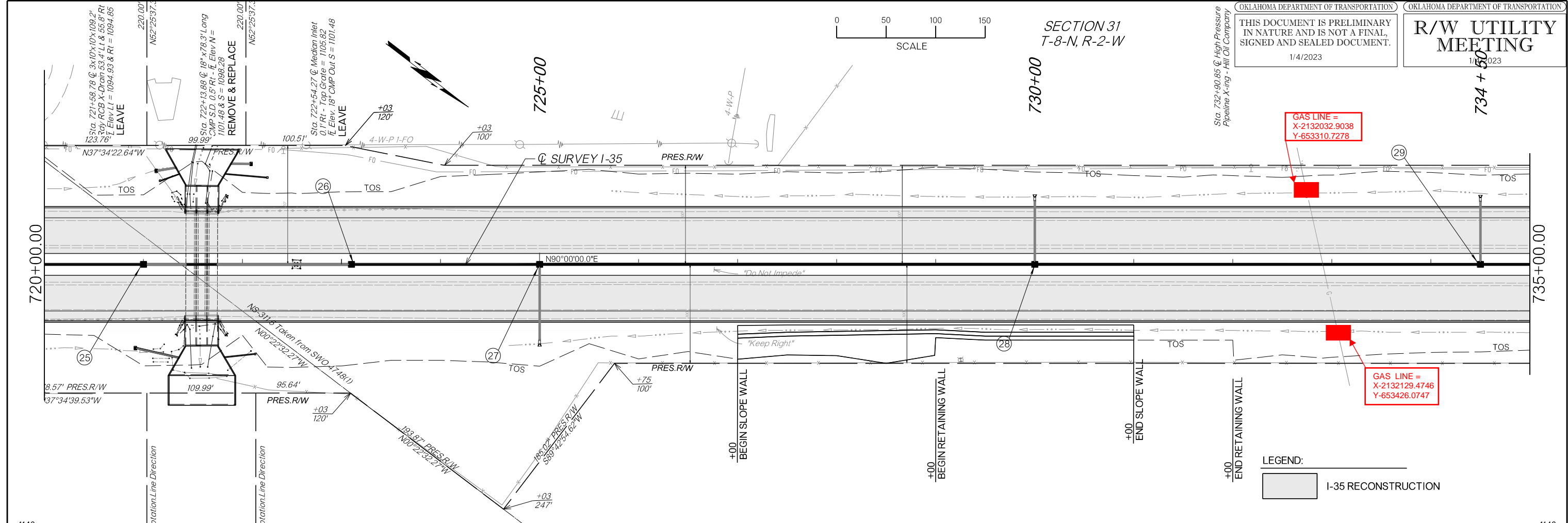


LEGEND:
I-35 RECONSTRUCTION



1/4/2023

1/14/2023



OKLAHOMA DEPARTMENT OF TRANSPORTATION
 THIS DOCUMENT IS PRELIMINARY IN NATURE AND IS NOT A FINAL, SIGNED AND SEALED DOCUMENT.
 1/4/2023

OKLAHOMA DEPARTMENT OF TRANSPORTATION
R/W UTILITY MEETING
 1/15/2023

SECTION 31
 T-8-N, R-2-W



Sta. 732+90.85 @ High Pressure Pipeline X-ing - Hill Oil Company

GAS LINE =
 X-2132032.9038
 Y-653310.7278

GAS LINE =
 X-2132129.4746
 Y-653426.0747

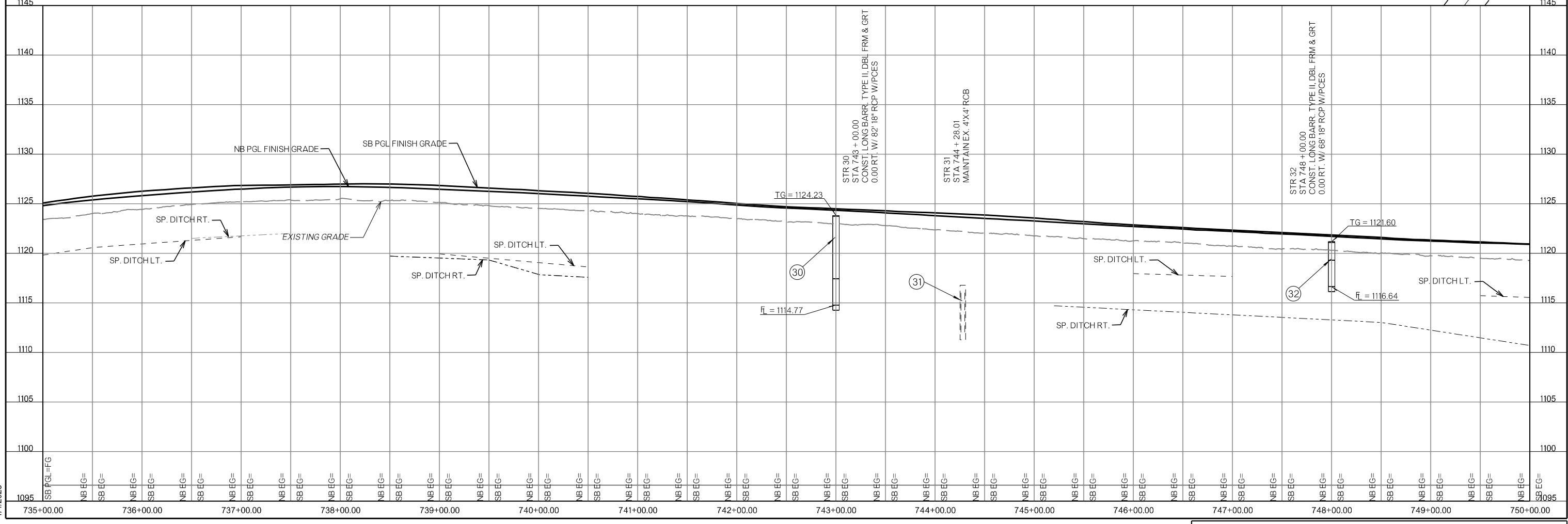
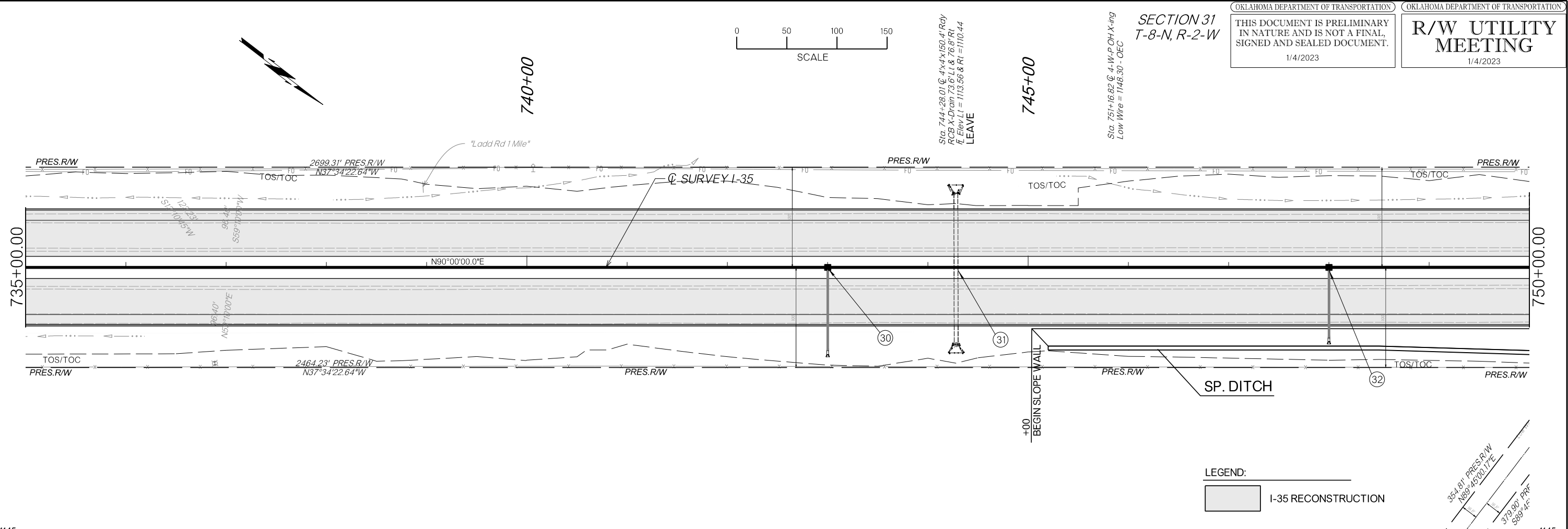
LEGEND:
 I-35 RECONSTRUCTION



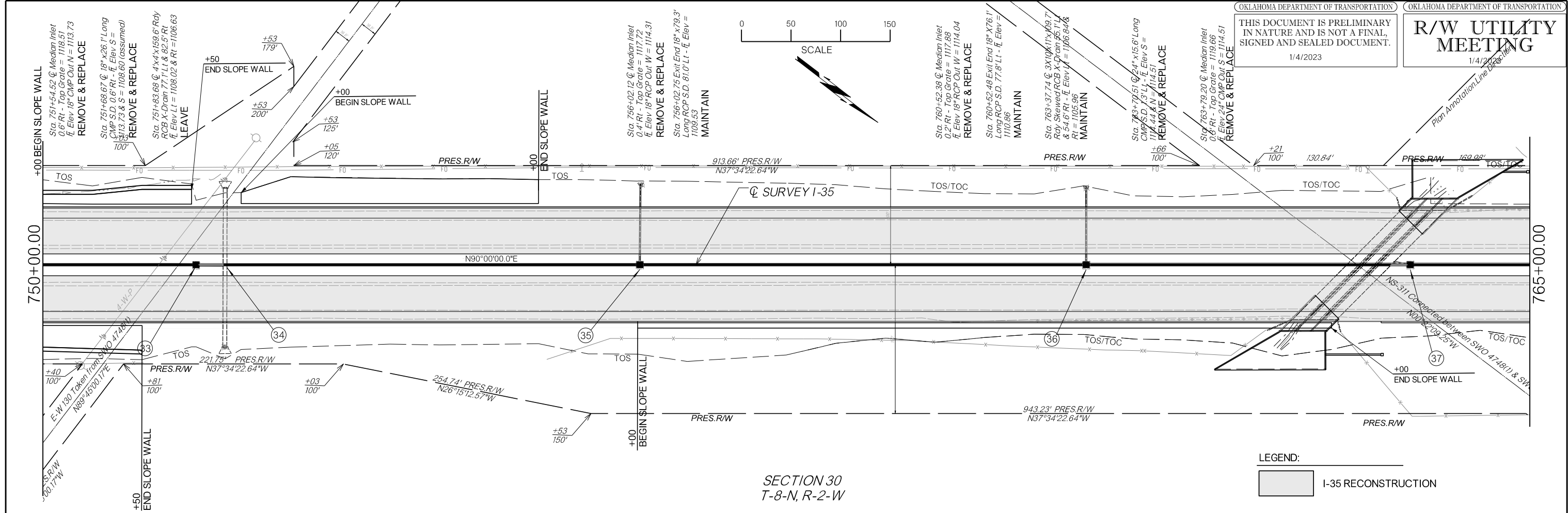
SECTION 31
 T-8-N, R-2-W

Sta. 744+28.01 @ 4"x4"x150.4' Rcb
 RCB X-Drain, 73.6' Lt & 76.8' Rt
 Fl Elev Lt = 1113.56 & Rt = 1110.44
 LEAVE

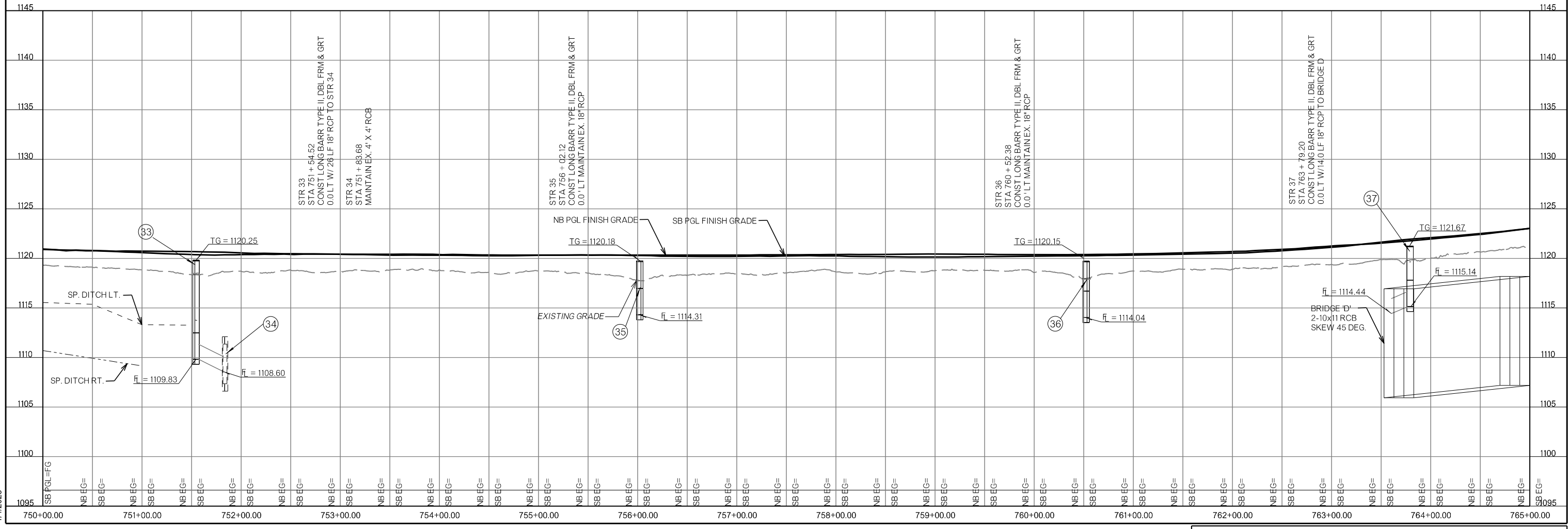
Sta. 751+16.82 @ 4-W-P-CH X-ing
 Low Wire = 1146.30 - DEC



1/4/2023



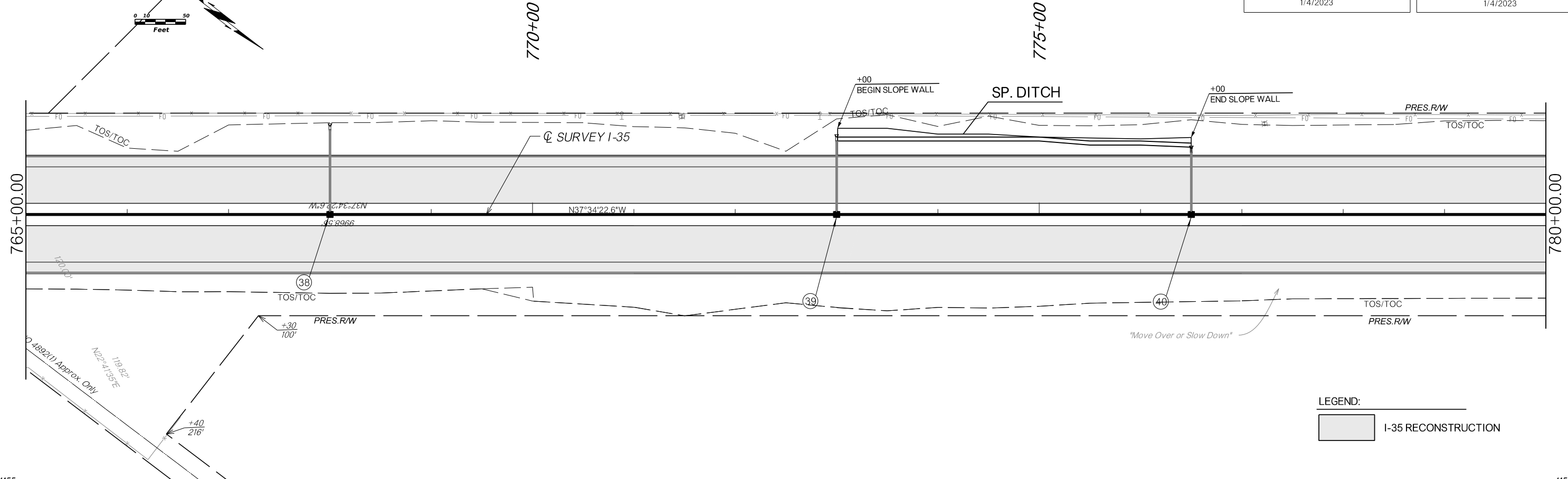
LEGEND:
 [Shaded Box] I-35 RECONSTRUCTION



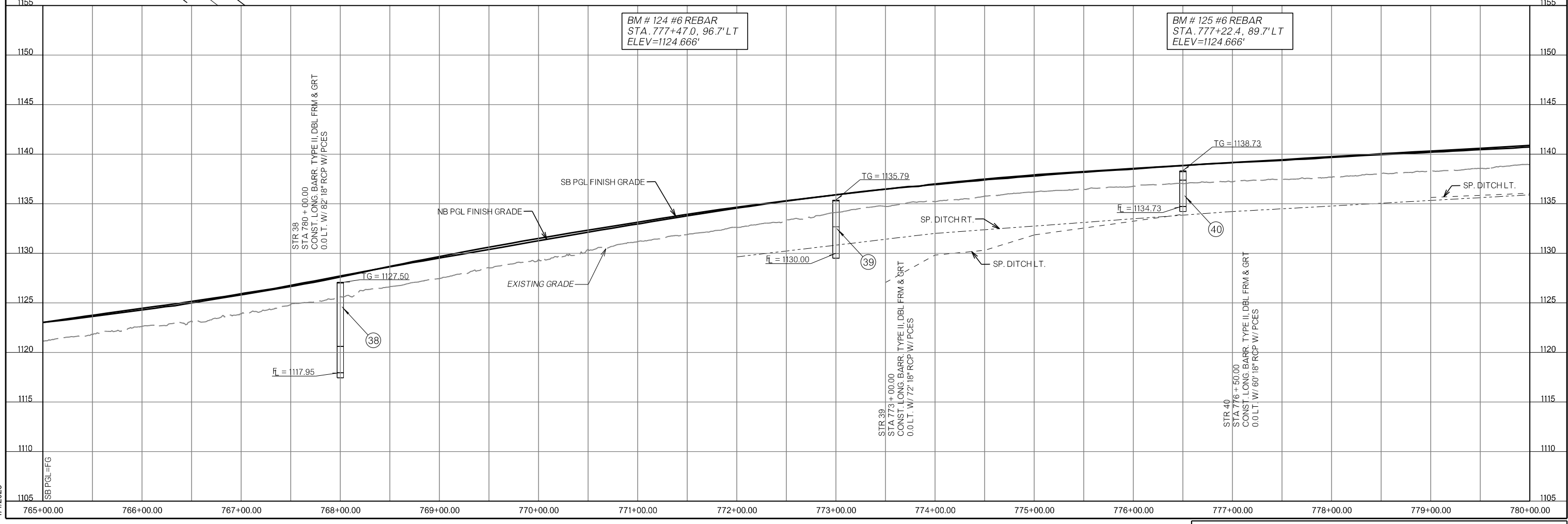
SECTION 25
T-8-N, R-3-W

OKLAHOMA DEPARTMENT OF TRANSPORTATION
THIS DOCUMENT IS PRELIMINARY
IN NATURE AND IS NOT A FINAL,
SIGNED AND SEALED DOCUMENT.
1/4/2023

OKLAHOMA DEPARTMENT OF TRANSPORTATION
**PROPOSED
R/W**
1/4/2023



LEGEND:
[Shaded Box] I-35 RECONSTRUCTION



1/4/2023

SECTION 25
T-8-N, R-3-W



Sta. 783+42.18 Exit End 24" x 88.5"
Long RCP S.D. 79.0' RT - fl. Elev
= 1186.82
LEAVE

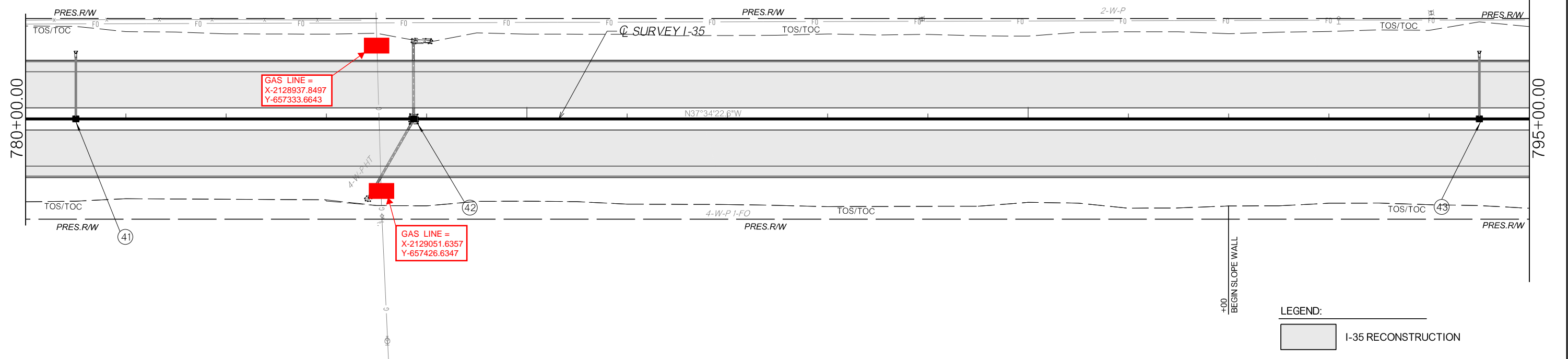
Sta. 783+52.50 Q Gasline
X-ing - ONG

Sta. 783+82.93 Q 4-W-P High
Tension OH X-ing - Low Wire
= 1171.71 - Western Farmers

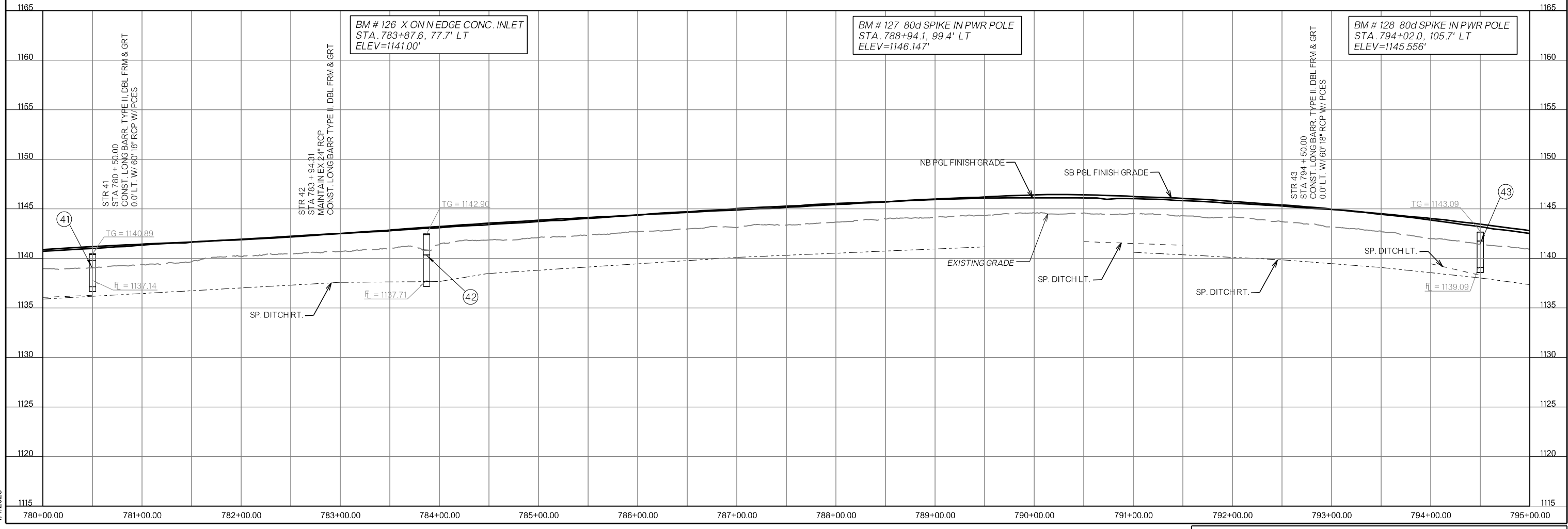
Sta. 783+86.99 Q Median Inlet
0.1' RT - Top Grate = 1140.79
fl. Elev. 24" RCP In W = 1137.68
fl. Elev. 24" RCP Out E = 1137.71
REMOVE & REPLACE

Sta. 783+86.71 Exit End 24" x 74.5"
Long RCP S.D. 76.5' LT - fl. Elev
= 1138.07
LEAVE

Sta. 783+94.31 Q Grate Inlet
7.4' LT - Top Grate = 1140.67
fl. Elev. 24" RCP Out E = 1138.07
LEAVE

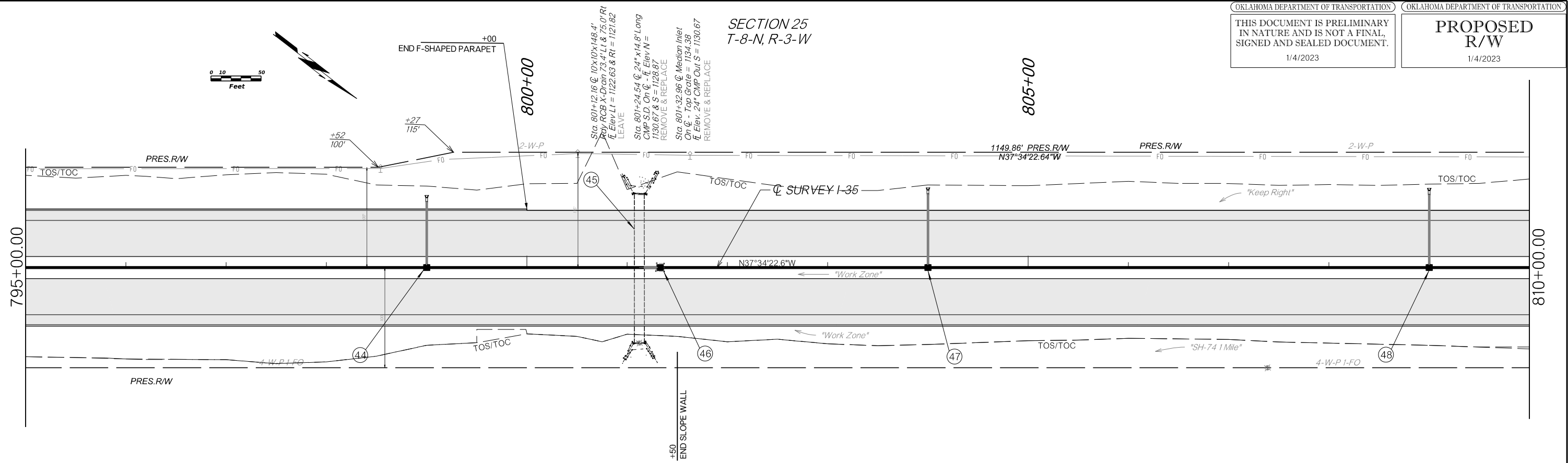


LEGEND:
I-35 RECONSTRUCTION

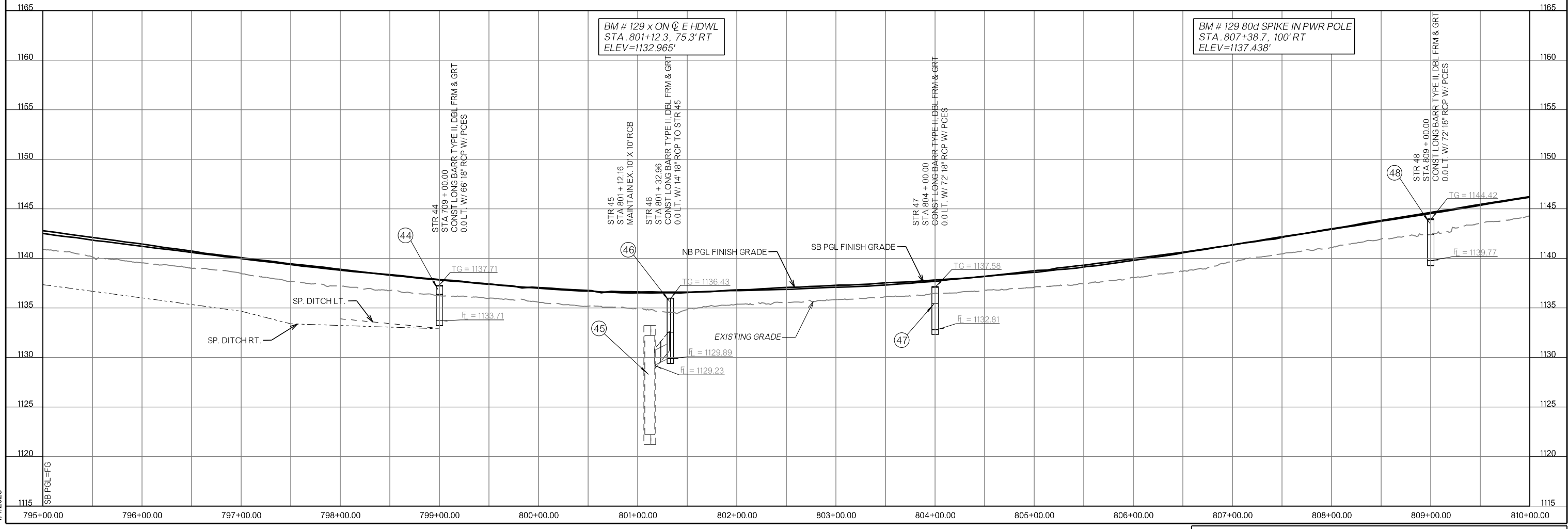


1/4/2023

**SECTION 25
 T-8-N, R-3-W**



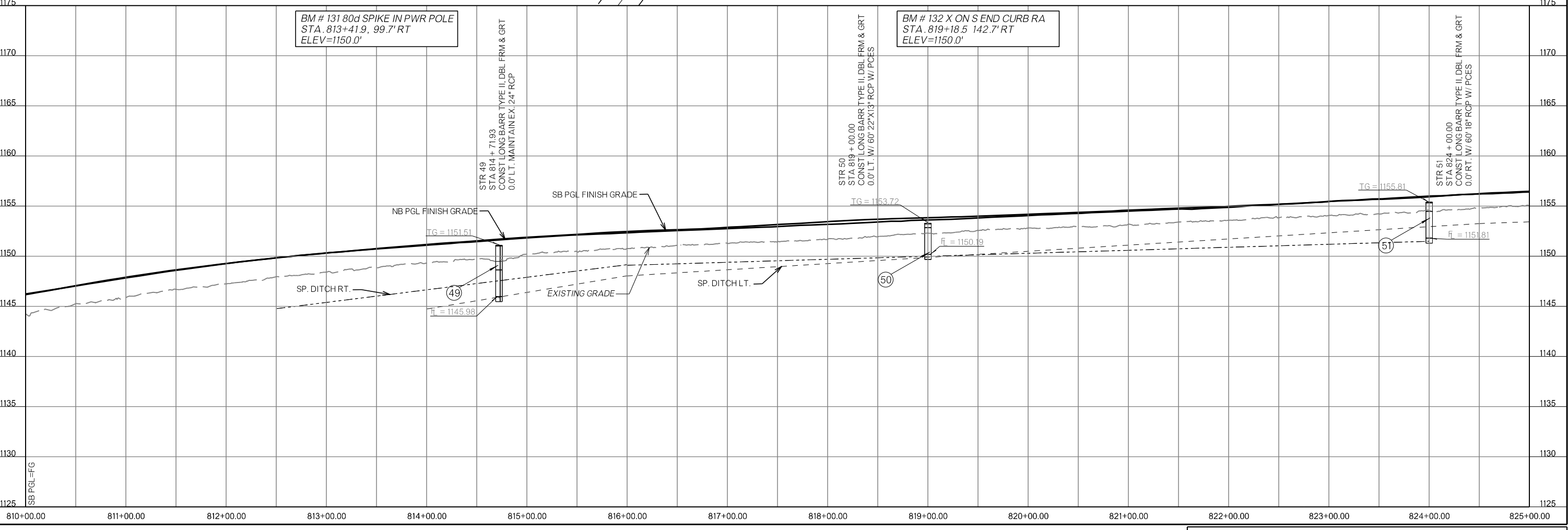
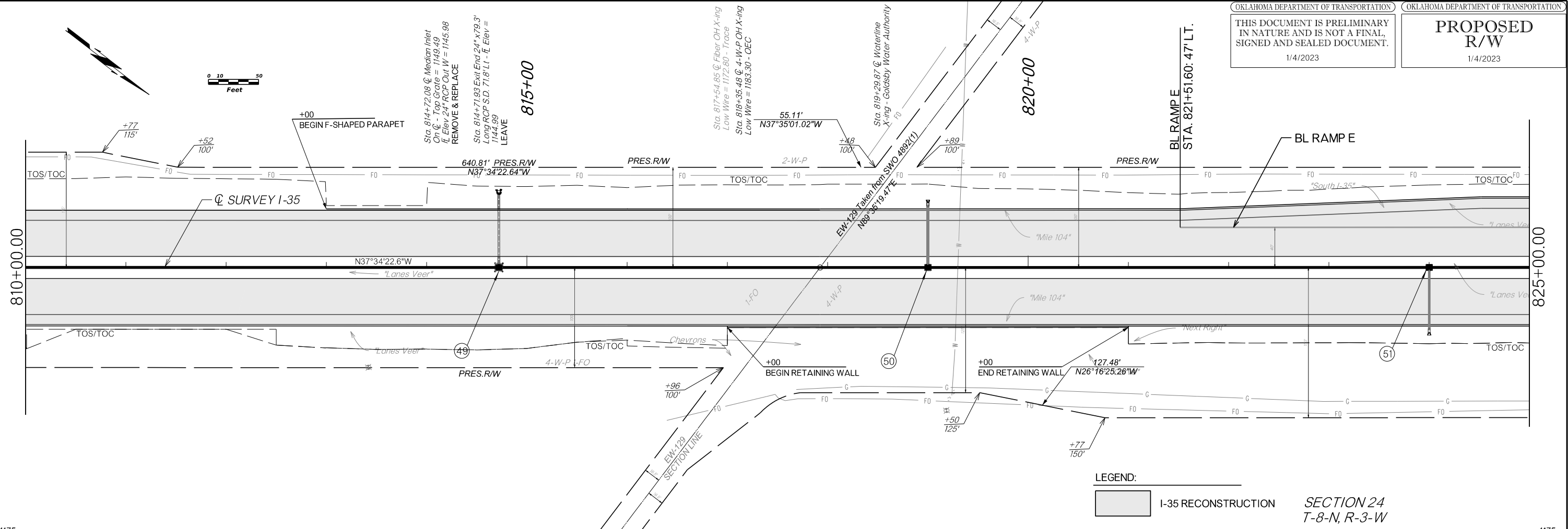
LEGEND:
 I-35 RECONSTRUCTION



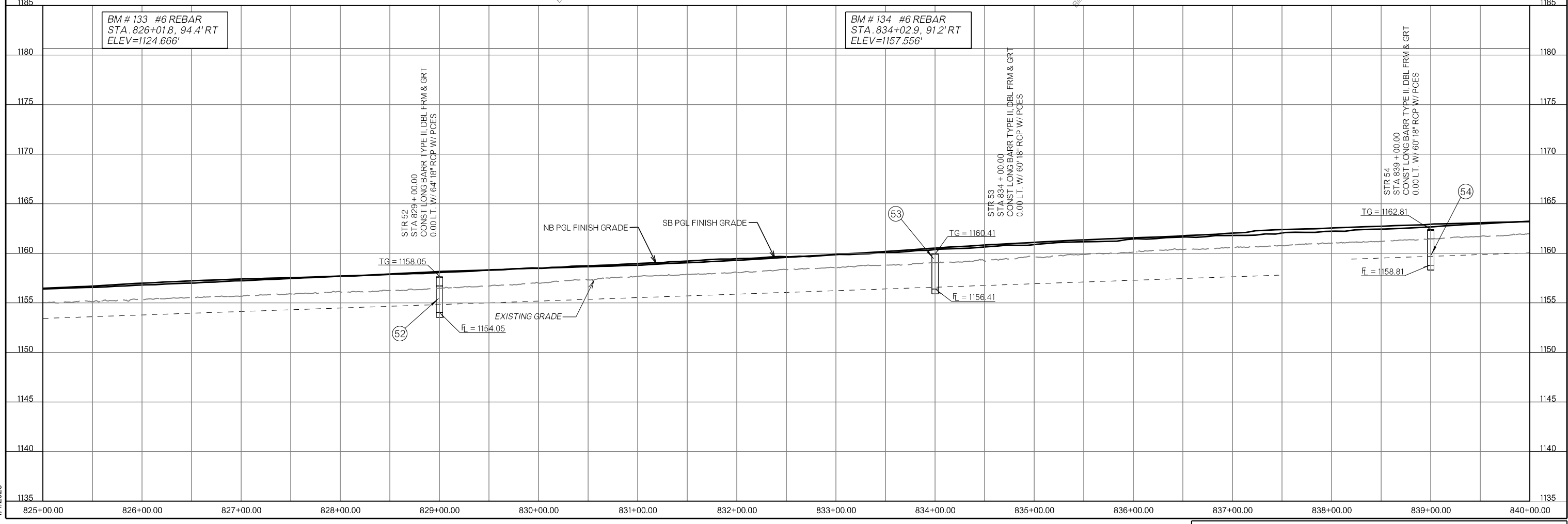
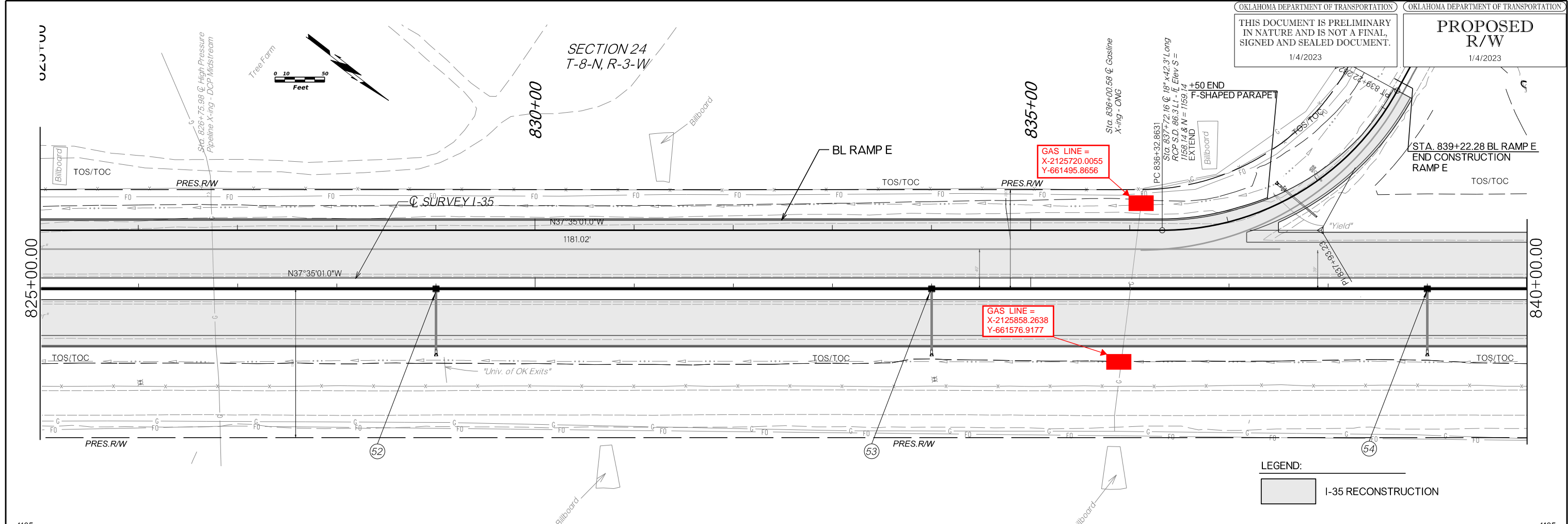
BM # 129 x ON @ E HDWL
 STA. 801+12.3, 75.3' RT
 ELEV=1132.965'

BM # 129 80d SPIKE IN PWR POLE
 STA. 807+38.7, 100' RT
 ELEV=1137.438'

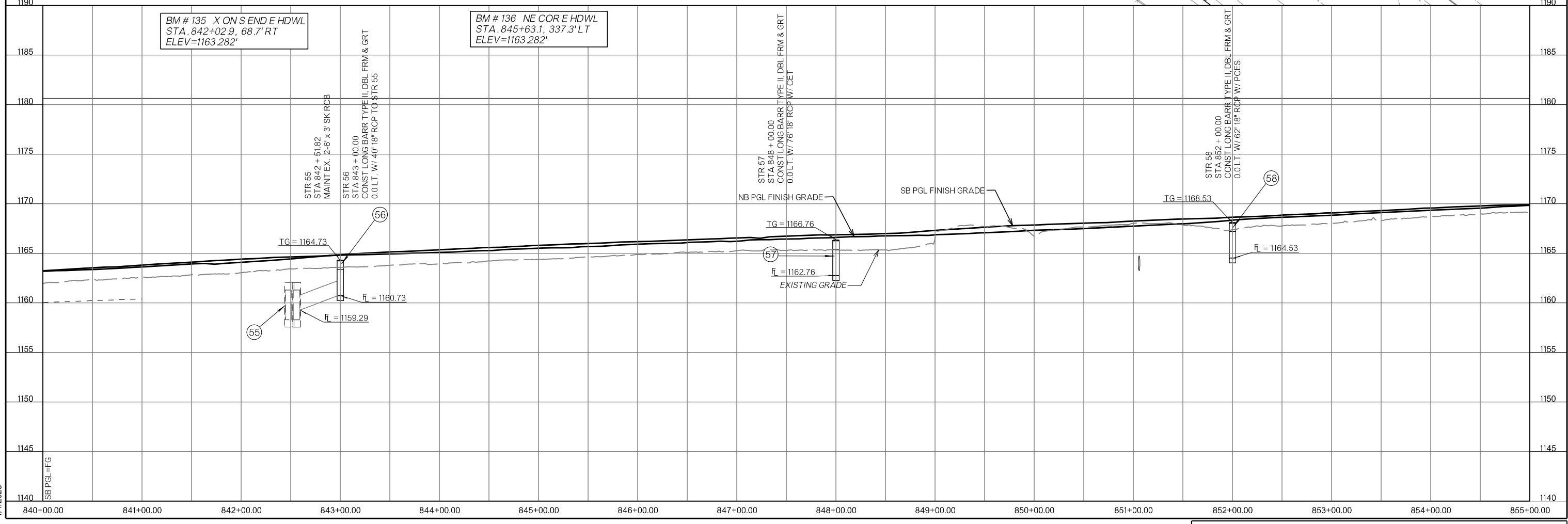
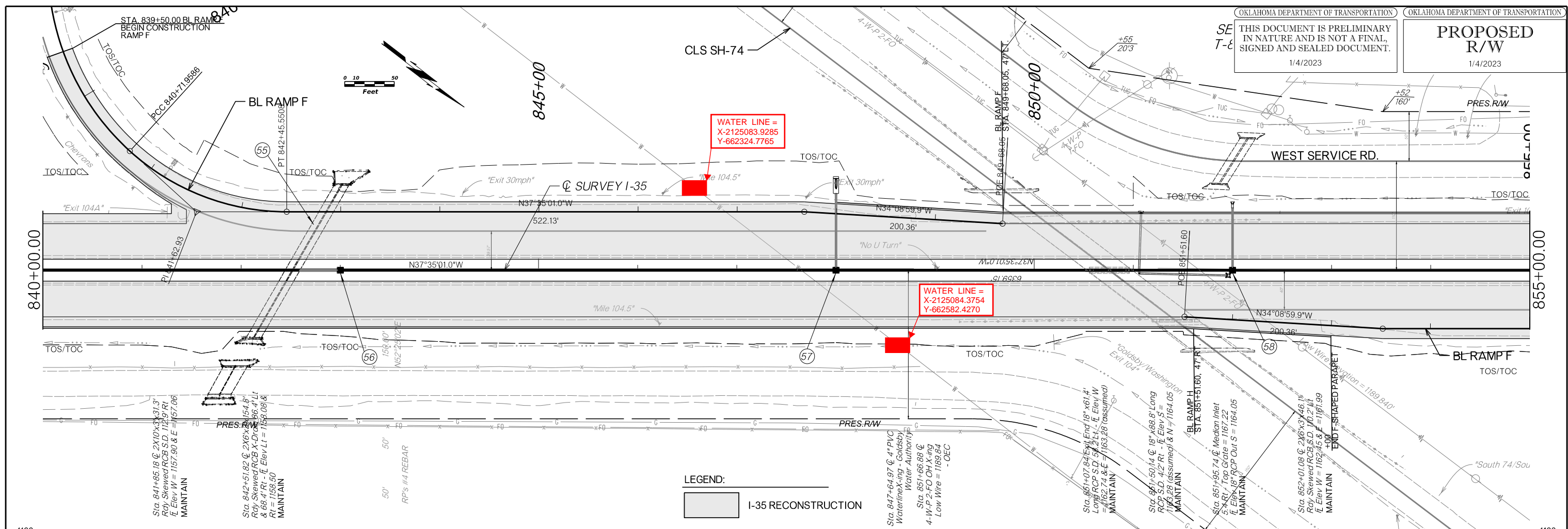
1/4/2023



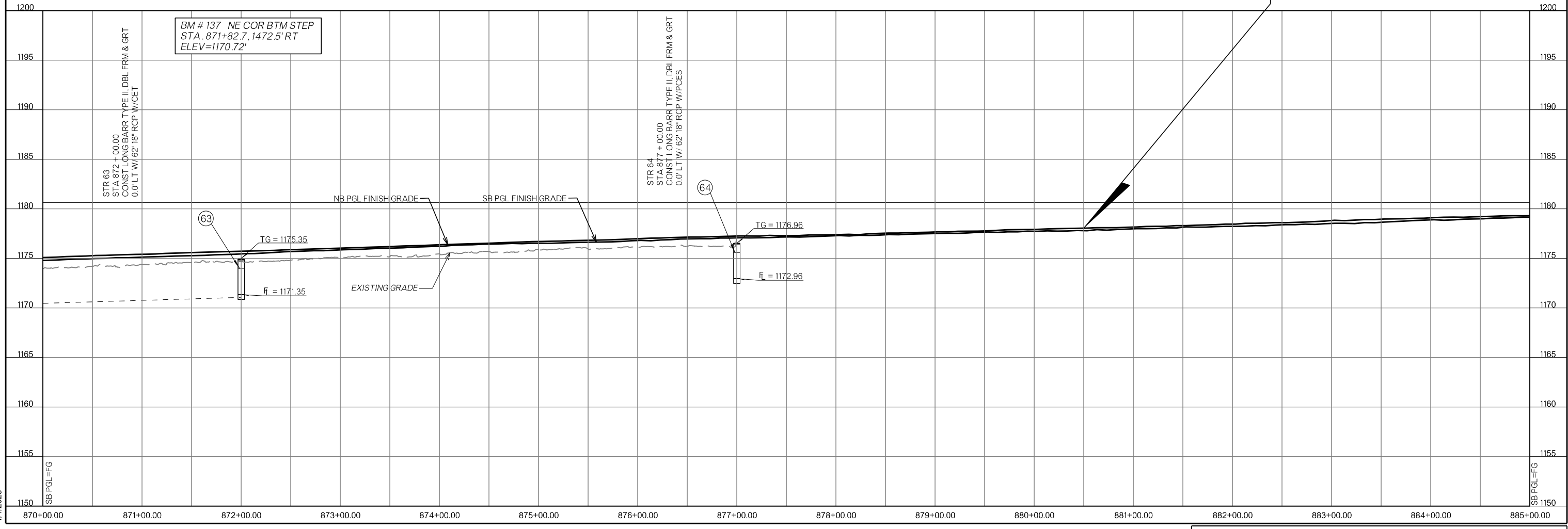
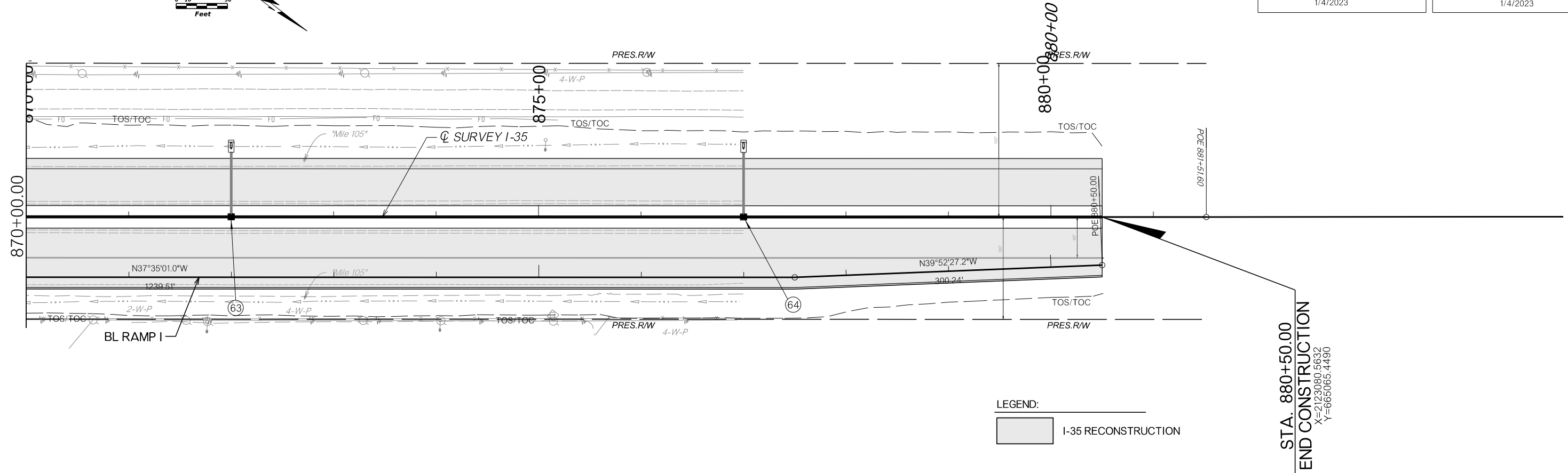
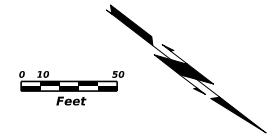
1/4/2023



1/4/2023



1/4/2023



1/4/2023