

# SURVEY DATA SHEETS

## SURVEY CONTROL DATA

### 1. POSITIONAL CONTROL:

- A. POSITIONAL CONTROL FOR THIS SURVEY IS THE NGS OKLAHOMA STATE PLANE COORDINATE SYSTEM, NAD83 (2011), LAMBERT PROJECTION (SOUTH ZONE).
- B. ACCURACY - THE POSITIONAL CONTROLS FOR THIS SURVEY MEETS OR EXCEEDS THE FOLLOWING ACCURACY CRITERIA:
1. NETWORK ACCURACY: 0.10 FOOT
  2. LOCAL ACCURACY: 0.05 FOOT

### 2. BEARINGS:

THE BEARINGS SHOWN HEREIN OR HEREON ARE GRID BEARINGS DERIVED FROM THE NGS OKLAHOMA STATE PLANE COORDINATE SYSTEM AND ARE NOT ASTRONOMICAL. THE ANGLE OF VARIANCE BETWEEN GRID NORTH (GN) AND THE ASTRONOMICAL TRUE NORTH (TN) IS DEPICTED DIAGRAMMATICALLY.

### 3. VERTICAL CONTROLS:

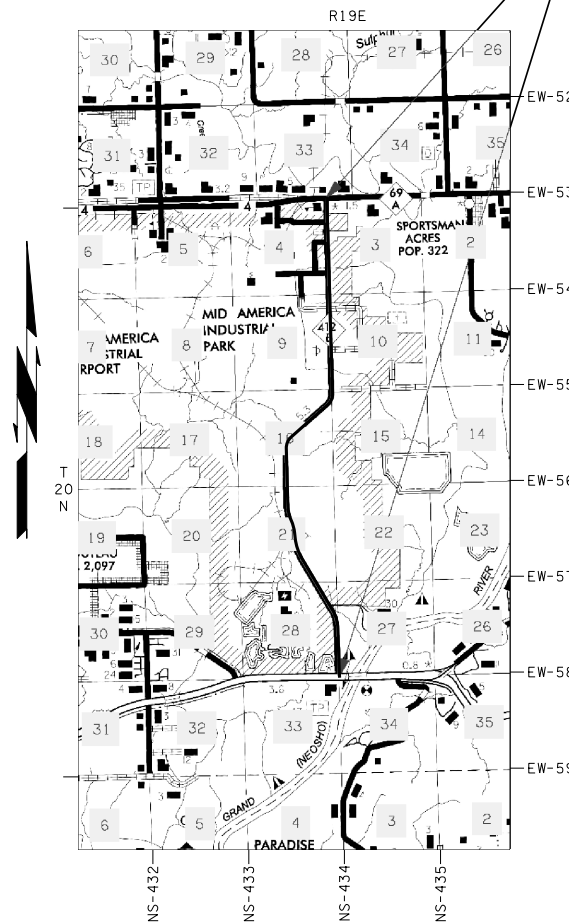
- A. LEVEL DATUM IS NAVD 88 FROM STATIC GPS.
- B. ACCURACY - VERTICAL CONTROL FOR THIS SURVEY MEETS OR EXCEEDS THE FOLLOWING ACCURACY CRITERIA:
1. NETWORK ACCURACY (FROM GPS OR LEVELING): 0.10 FOOT
  2. LOCAL ACCURACY (CONFIRMED BY LEVELING): 0.02 FOOT

## MAYES COUNTY SH-412B

### MAIP

SH-412B; BEGINNING 0.5 MILE WEST OF THE INTERSECTION OF HIGHWAY 412 AND 412B, EXTENDING NORTH ALONG SH-412B 5.3 MILES TO HIGHWAY 69A

SURVEY EXTENTS



PROJECT LENGTH 28106.42 Ft. 5.32 MI.

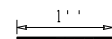
BEGINNING STATION : 99+95.87

ENDING STATION : 381+02.29

### UTILITIES CONTACTED

UTILITY	CONTACT	PHONE
<b>Electric Tran's Lines:</b>		
ORDA/River Pump Station	Cameron Philpott	(918) 810-8752 (918) 931-1911 ©
Kamo Power	Phillip Fanslet	(918) 256-5551
<b>Pipelines</b>		
Enable OK Intrastate Transmission-Sa	Jerod Ramsey or John Akingbola	(918) 509-0243 (918) 293-8454 (405) 412-8723 ©
Kansas Gas	Stephen Johns	(918) 955-1808
MAIP Water & Sewer	Keith Harris	(918) 373-2085
Mayes County RWD #7	John Sikes	(918)-693-5320 © (918) 388-2692 (H)
ONG/Gas Transmission line	Don Mason	(918) 260-8946
USIC/ONG/EAST OK	Kyle or Logan Irwin	(918) 261-0130 (918) 831-8385 (918) 671-5471 ©
<b>Tel &amp; Tel Lines</b>		
AT&T Distribution	Brad Williams	(918) 230-7474
Chouteau Telephone	Jason Goodnight	(918) 478-9219
Consolidated (Chouteau) Telephone	Stephen Johns	(918) 955-1808
MBO Video/Mannford 2	Steve Fowler	(918) 638-1581

### SCALES



SURVEY DATA SHEETS 1" = 50' TOWN

SURVEY DATA SHEETS 1" = 100'

GEOMETRIC DATA SHEETS 1" = 500'

THIS SURVEY MEETS THE OKLAHOMA MINIMUM STANDARDS FOR THE PRACTICE OF LAND SURVEYING AS ADOPTED BY THE OKLAHOMA STATE BOARD OF REGISTRATION FOR PROFESSIONAL ENGINEERS AND LAND SURVEYORS, SEPTEMBER 14, 2018.

SPECIFICATIONS FOR SURVEYS FOR PRIMARY AND SECONDARY HIGHWAYS DATED MONTH, 2017 GOVERN.



### Electronic File Transfer Disclaimer:

These Files, Drawings and/or Notes are provided for information only. The Oklahoma Department of Transportation (ODOT) and the Owner cannot be held responsible for the content or accuracy of these Files, Drawings and/or Notes due to conversions, software translations, or any other manipulation of said Files, Drawings and/or Notes. ODOT expressly disclaims any responsibility arising from any use of these Files, Drawings and/or Notes. To the full extent permitted by applicable law, the recipient of these Files, Drawings and/or Notes hereby agrees to defend, indemnify, and hold harmless ODOT and the Owner from and against any and all claims, suits, actions, damages, loss, liability or costs of every nature or description (including reasonable attorney's fees) arising from, or in any way attributable to or connected with any of these Files, Drawings and/or Notes.



PLS	CEH	12-21	OKLAHOMA DEPARTMENT OF TRANSPORTATION SURVEY DIVISION
DRAWN	TDL	12-21	
CHECKED	TDL	12-21	
APPROVED			
CREW			
SURVEY DATA SHEET			SWO _____
COUNTY	MAYES	HIGHWAY SH-412B STATE JOB NO. MAIP SHEET NO. S001	

CHECK LEVELS				MAIP 412B		BENCHMARKS LIST		NAVD 88 DATUM	
BM NO.	RUN 1	RUN 2	MEAN DIFF.	ADJ. DIFF.	ADJ. ELEV.	PUBLISHED ELEVATION	BM DESCRIPTION, STA/OFFSET	Page 1 of 6	
Control No. 103						628.035	2.5" Aluminum Cap "PRY CONTROL POINT"		
to	-26.049	-26.049	-26.0490						
BM 1					601.9860		3/4" Rebar w/cap "KEYSTONE BENCHMARK" Sta. 102+26.25 Offset 2420.06' Lt		
to	-14.746	-14.744	-14.7450	-14.7443					
BM 2					587.2417		Mag Nail w/washer "KEYSTONE BENCHMARK" Sta. 99+35.73 Offset 1676.22' Lt		
to	0.809	0.813	0.8110	0.8117					
BM 3					588.0534		3/4" Rebar w/cap "KEYSTONE BENCHMARK" Sta. 102+34.13 Offset 1347.41' Lt		
to	2.008	2.007	2.0075	2.0082					
BM 4					590.0617		1/2" Rebar w/cap "KEYSTONE BENCHMARK" Sta. 101+80.07 Offset 1271.02' Lt		
to	0.545	0.545	0.5450	0.5457					
BM 5					590.8074		3/4" Rebar w/cap "KEYSTONE BENCHMARK" Sta. 101+82.41 Offset 645.05' Lt		
to	-1.224	-1.227	-1.2255	-1.2248					
BM 6					589.3826		3/4" Rebar w/cap "KEYSTONE BENCHMARK" Sta. 103+55.79 Offset 64.52' Rt		
to	11.566	11.556	11.5560	11.5567					
BM 7					600.9303		3/4" Rebar w/cap "KEYSTONE BENCHMARK" Sta. 100+06.08 Offset 442.04' Rt		
to	-2.227	-2.227	-2.2270	-2.2263					
BM 8					588.7131		3/4" Rebar w/cap "KEYSTONE BENCHMARK" Sta. 110+42.47 Offset 49.91' Lt		
to	7.954	7.954	7.9540	7.9547					
BM 9					606.6678		3/4" Rebar w/cap "KEYSTONE BENCHMARK" Sta. 117+58.36 Offset 51.84' Lt		
to	6.229	6.229	6.2290	6.2297					
BM 10					612.8975		3/4" Rebar w/cap "KEYSTONE BENCHMARK" Sta. 124+67.84 Offset 53.52' Lt		

CHECK LEVELS				MAIP 412B		BENCHMARKS LIST		NAVD 88 DATUM	
BM NO.	RUN 1	RUN 2	MEAN DIFF.	ADJ. DIFF.	ADJ. ELEV.	PUBLISHED ELEVATION	BM DESCRIPTION, STA/OFFSET	Page 2 of 6	
to	1.858	1.857	1.8575	1.8582					
BM 11					614.7557		3/4" Rebar w/cap "KEYSTONE BENCHMARK" Sta. 132+16.76 Offset 61.05' Rt		
to	11.715	11.717	11.7160	11.7167					
BM 12					626.4724		Mag Nail w/washer "KEYSTONE BENCHMARK" Sta. 140+48.31 Offset 31.82' Lt		
to	-1.216	-1.217	-1.2165	-1.2158					
BM 13					625.2567		1/2" Rebar w/cap "KEYSTONE BENCHMARK" Sta. 140+01.95 Offset 42.53' Lt		
to	7.575	7.575	7.5750	7.5757					
BM 14					632.8324		3/4" Rebar w/cap "KEYSTONE BENCHMARK" Sta. 146+10.36 Offset 82.18' Lt		
to	5.950	5.955	5.9555	5.9562					
BM 15					638.7886		3/4" Rebar w/cap "KEYSTONE BENCHMARK" Sta. 153+10.45 Offset 83.42' Lt		
to	0.212	0.211	0.2115	0.2122					
BM 16					639.0008		3/4" Rebar w/cap "KEYSTONE BENCHMARK" Sta. 160+10.62 Offset 82.27' Lt		
to	3.547	3.546	3.5465	3.5472					
BM 17					642.5481		3/4" Rebar w/cap "KEYSTONE BENCHMARK" Sta. 167+09.29 Offset 38.81' Lt		
to	11.167	11.171	11.1690	11.1697					
BM 18					653.7178		3/4" Rebar w/cap "KEYSTONE BENCHMARK" Sta. 174+06.93 Offset 82.05' Rt		
to	3.628	3.631	3.6295	3.6302					
BM 19					657.3480		3/4" Rebar w/cap "KEYSTONE BENCHMARK" Sta. 181+00.26 Offset 47.20' Lt		
to	3.536	3.536	3.5360	3.5367					
BM 20					660.8847		Mag Nail w/washer "KEYSTONE BENCHMARK" Sta. 187+09.15 Offset 48.90' Lt		
to	12.724	12.728	12.7260	12.7267					

CHECK LEVELS				MAIP 412B		BENCHMARKS LIST		NAVD 88 DATUM	
BM NO.	RUN 1	RUN 2	MEAN DIFF.	ADJ. DIFF.	ADJ. ELEV.	PUBLISHED ELEVATION	BM DESCRIPTION, STA/OFFSET	Page 3 of 6	
BM 21					673.6114		3/4" Rebar w/cap "KEYSTONE BENCHMARK" Sta. 194+83.67 Offset 89.15' Rt		
to	-2.887	-2.887	-2.8870	-2.8863					
BM 22					670.7262		3/4" Rebar w/cap "KEYSTONE BENCHMARK" Sta. 201+83.64 Offset 47.42' Lt		
to	-4.508	-4.508	-4.5085	-4.5078					
BM 23					666.2174		3/4" Rebar w/cap "KEYSTONE BENCHMARK" Sta. 208+53.19 Offset 61.97' Rt		
to	-0.402	-0.403	-0.4025	-0.4018					
BM 24					665.8150		3/4" Rebar w/cap "KEYSTONE BENCHMARK" Sta. 215+01.64 Offset 47.92' Lt		
to	3.334	3.336	3.3350	3.3357					
BM 25					669.1513		3/4" Rebar w/cap "KEYSTONE BENCHMARK" Sta. 222+91.20 Offset 47.35' Lt		
to	-20.745	-20.741	-20.7430	-20.7423					
BM 26					648.4091		3/4" Rebar w/cap "KEYSTONE BENCHMARK" Sta. 229+90.78 Offset 47.84' Lt		
to	16.713	16.714	16.7135	16.7142					
BM 27					685.1233		3/4" Rebar w/cap "KEYSTONE BENCHMARK" Sta. 237+12.71 Offset 45.43' Rt		
to	16.881	16.881	16.8810	16.8817					
BM 28					661.9890		3/4" Rebar w/cap "KEYSTONE BENCHMARK" Sta. 244+18.04 Offset 45.47' Lt		
to	-4.621	-4.623	-4.6220	-4.6213					
BM 29					677.3837		3/4" Rebar w/cap "KEYSTONE BENCHMARK" Sta. 236+16.98 Offset 1247.43' Lt		
to	-7.064	-7.064	-7.0640	-7.0633					
BM 30					670.3004		3/4" Rebar w/cap "KEYSTONE BENCHMARK" Sta. 238+83.84 Offset 572.04' Lt		
to	11.835	11.835	11.8350	11.8357					
BM 31					682.1362		1/2" Rebar w/cap "KEYSTONE BENCHMARK" Sta. 245+48.76 Offset 61.40' Rt		

CHECK LEVELS				MAIP 412B		BENCHMARKS LIST		NAVD 88 DATUM	
BM NO.	RUN 1	RUN 2	MEAN DIFF.	ADJ. DIFF.	ADJ. ELEV.	PUBLISHED ELEVATION	BM DESCRIPTION, STA/OFFSET	Page 4 of 6	
to	-18.289	-18.288	-18.2885	-18.2878					
BM 32					663.8484		3/4" Rebar w/cap "KEYSTONE BENCHMARK" Sta. 250+77.09 Offset 628.00' Rt		
to	0.875	0.876	0.8755	0.8762					
BM 33					664.7246		3/4" Rebar w/cap "KEYSTONE BENCHMARK" Sta. 250+93.17 Offset 93.82' Rt		
to	18.107	18.108	18.1075	18.1082					
BM 34					682.8328		3/4" Rebar w/cap "KEYSTONE BENCHMARK" Sta. 251+11.76 Offset 624.03' Lt		
to	-39.894	-39.895	-39.8945	-39.8938					
BM 35					642.9391		3/4" Rebar w/cap "KEYSTONE BENCHMARK" Sta. 257+90.27 Offset 47.03' Lt		
to	4.791	4.788	4.7895	4.7902					
BM 36					647.7293		3/4" Rebar w/cap "KEYSTONE BENCHMARK" Sta. 264+66.56 Offset 99.66' Rt		
to	-31.186	-31.183	-31.1845	-31.1838					
BM 37					616.5455		3/4" Rebar w/cap "KEYSTONE BENCHMARK" Sta. 271+66.25 Offset 48.61' Lt		
to	-9.914	-9.913	-9.9135	-9.9128					
BM 38					606.6327		3/4" Rebar w/cap "KEYSTONE BENCHMARK" Sta. 278+55.16 Offset 103.44' Rt		
to	-0.719	-0.719	-0.7190	-0.7183					
BM 39					605.9144		3/4" Rebar w/cap "KEYSTONE BENCHMARK" Sta. 285+38.52 Offset 61.82' Lt		
to	-0.968	-0.967	-0.9675	-0.9668					
BM 40					604.9477		3/4" Rebar w/cap "KEYSTONE BENCHMARK" Sta. 282+42.69 Offset 71.42' Rt		
to	1.958	1.958	1.9580	1.9587					
BM 41					606.9064		Mag Nail w/washer "KEYSTONE BENCHMARK" Sta. 299+36.87 Offset 66.53' Lt		
to	-0.614	-0.611	-0.6125	-0.6118					

PLS	CEH	12-21	OKLAHOMA DEPARTMENT OF TRANSPORTATION SURVEY DIVISION
DRAWN	TDL	12-21	
CHECKED	TDL	12-21	
APPROVED			
CREW			
COUNTY <u>MAYES</u> HIGHWAY <u>SH-412B</u> STATE JOB NO. <u>MAIP</u> SHEET NO. <u>S002</u>			SURVEY DATA SHEET SWO _____

CHECK LEVELS				MAIP 412B		BENCHMARKS LIST		NAVD 88 DATUM	
BM NO.	RUN 1	RUN 2	MEAN DIFF.	ADJ. DIFF.	ADJ. ELEV.	PUBLISHED ELEVATION	BM DESCRIPTION, STA/OFFSET	Page 5 of 6	
BM 42					606.2946		3/4" Rebar w/cap "KEystone BENCHMARK" Sta. 307+02.13 Offset 79.74' Rt		
to	0.719	0.721	0.7200	0.7207					
BM 43					607.0153		3/4" Rebar w/cap "KEystone BENCHMARK" Sta. 314+00.50 Offset 88.91' Rt		
to	1.454	1.454	1.4540	1.4547					
BM 44					608.4701		Mag Nail w/washer "KEystone BENCHMARK" Sta. 320+81.18 Offset 72.35' Lt		
to	-1.052	-1.048	-1.0500	-1.0493					
BM 45					607.4208		3/4" Rebar w/cap "KEystone BENCHMARK" Sta. 326+85.25 Offset 99.75' Rt		
to	-1.063	-1.062	-1.0625	-1.0618					
BM 46					605.4590		Mag Nail w/washer "KEystone BENCHMARK" Sta. 333+78.44 Offset 61.37' Rt		
to	0.849	0.849	0.8490	0.8497					
BM 47					608.3087		Mag Nail w/washer "KEystone BENCHMARK" Sta. 340+42.61 Offset 73.80' Lt		
to	-1.358	-1.358	-1.3580	-1.3573					
BM 48					604.9514		3/4" Rebar w/cap "KEystone BENCHMARK" Sta. 347+77.57 Offset 47.03' Rt		
to	-2.848	-2.848	-2.8480	-2.8473					
BM 49					602.1042		3/4" Rebar w/cap "KEystone BENCHMARK" Sta. 354+00.93 Offset 49.07' Rt		
to	3.735	3.737	3.7360	3.7357					
BM 50					605.8409		Mag Nail w/washer "KEystone BENCHMARK" Sta. 359+40.57 Offset 95.54' Lt		
to	-5.238	-5.238	-5.2380	-5.2373					
BM 51					600.6036		3/4" Rebar w/cap "KEystone BENCHMARK" Sta. 366+70.01 Offset 82.10' Rt		
to	5.379	5.382	5.3805	5.3812					
BM 52					605.9848		Cut "X" in structure Sta. 373+81.33 Offset 39.14' Lt		

CHECK LEVELS				MAIP 412B		BENCHMARKS LIST		NAVD 88 DATUM	
BM NO.	RUN 1	RUN 2	MEAN DIFF.	ADJ. DIFF.	ADJ. ELEV.	PUBLISHED ELEVATION	BM DESCRIPTION, STA/OFFSET	Page 6 of 6	
to	-6.508	-6.508	-6.5080	-6.5073					
BM 53					599.4776		Mag Nail w/washer "KEystone BENCHMARK" Sta. 381+47.06 Offset 206.77' Rt		
to	58.710	58.710	58.7100	58.7107					
BM 54					658.1883		1/2" Rebar w/cap "KEystone BENCHMARK" Sta. 378+45.64 Offset 2304.46' Lt		
to	-30.154	-30.154	-30.1540	-30.1533					
Control No. 103					628.0350	628.035	2.5" Aluminum Cap "PRY CONTROL POINT"		

PLS	CEH	12-21	OKLAHOMA DEPARTMENT OF TRANSPORTATION SURVEY DIVISION
DRAWN	TDL	12-21	
CHECKED	TDL	12-21	
APPROVED			
CREW			
COUNTY <u>MAYES</u> HIGHWAY <u>SH-412B</u> STATE JOB NO. <u>MAIP</u> SHEET NO. <u>S003</u>			SURVEY DATA SHEET SWO _____

P.O.T./P.O.B. Sta. 99+95.87

A002 N89°21'44.00"E

A002 N88°20'21.00"E

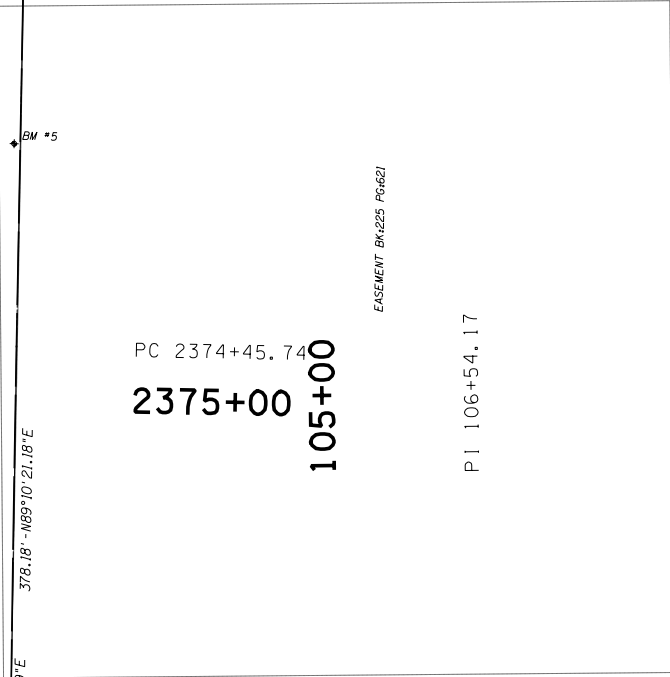
342

300

344

RIGHT OF WAY EASEMENT BK#225 PG#621

RIGHT OF WAY EASEMENT BK#630 PG#166



PC 2374+45.74  
2375+00  
105+00

PI 2379+57.28  
2380+00

PT 2384+68.79  
2385+00

CURVE 1 DATA  
P.I. Sta. 2379+57.28  
X=2771381.50168  
Y=439618.94734  
φ=01°01'23.00"  
D=00°06'00.00"  
T=511.541'  
L=1023.056'  
R=57295.780'  
E=2.284'

EASEMENT BK#225 PG#621

PI 106+54.17

301

A001 N02°22'09.71"W

110+00

BM #8

A001 N01°52'37.54"W

PI 113+08.33

302

115+00

USA  
BK#450  
PG#320

π SH-412B  
A001 N01°45'29.97"W

BM #9

PI 119+62.49  
120+00

303

A001 N01°42'41.14"W

BM #10

125+00

PC 126+13.81

304

128+00

CURVE 2 DATA  
P.I. Sta. 131+68.60  
X=2771276.76601  
Y=442789.91508  
φ=28°56'17.57"  
D=02°39'53.71"  
T=554.791'  
L=1085.894'  
R=2150.000'  
E=70.426'

USA  
BK#450  
PG#320



SCALE 0 100 200 300 400 500 Feet

PLS	CEH	12-21
DRAWN	TDL	12-21
CHECKED	TDL	12-21
APPROVED		
CREW		

OKLAHOMA DEPARTMENT OF TRANSPORTATION  
SURVEY DIVISION

### SURVEY DATA SHEET

SWO \_\_\_\_\_

OOWA  
BK:450  
PG:320

130+00

P.I. 131+68.60

135+00

PT 136+99.70

140+00

145+00

150+00

155+00

128+00

A001 N01°42'41.14"W

C2

BM #11

A001 N30°38'58.71"W

306

BM #12

BM #13

BM #14

SH-412B

BM #15

SH-412B A001 N30°38'58.71"W

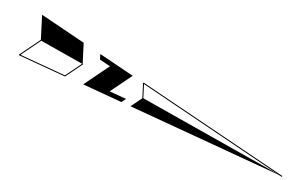
156+00

UTILITY (WATER) EASEMENT BK:630 PG:236

CURVE 2 DATA  
P.I. Sta. 131+68.60  
X=2771276.76601  
Y=442789.91508  
φ=28°56'17.57"  
D=02°39'53.71"  
T=554.791'  
L=1085.894'  
R=2150.000'  
E=70.426'

USA  
BK:450  
PG:320

OOWA  
BK:450  
PG:320



SCALE 0 100 200 300 400 500 Feet

PLS	CEH	12-21
DRAWN	TDL	12-21
CHECKED	TDL	12-21
APPROVED		
CREW		

OKLAHOMA DEPARTMENT OF TRANSPORTATION  
SURVEY DIVISION

### SURVEY DATA SHEET

SWO \_\_\_\_\_



156+00

160+00

165+00

PC 169+92.04

170+00

175+00

PI 176+05.06

180+00

PT 181+99.68

184+00

BM #16

BM #17

BM #18

BM #19

A001 N30°38' 58.71" W

A001 N30°38' 58.71" W

A001 N06°22' 17.63" W

307

336

C3

309

CURVE 3 DATA  
 P.I. Sta. 176+05.06  
 X = 2769003.04031  
 Y = 446626.98379  
 φ = 24°16' 41.03"  
 D = 02°00' 37.36"  
 T = 613.018'  
 L = 1207.637'  
 R = 2850.000'  
 E = 65.183'

OOWA  
 BK:450  
 PG:320

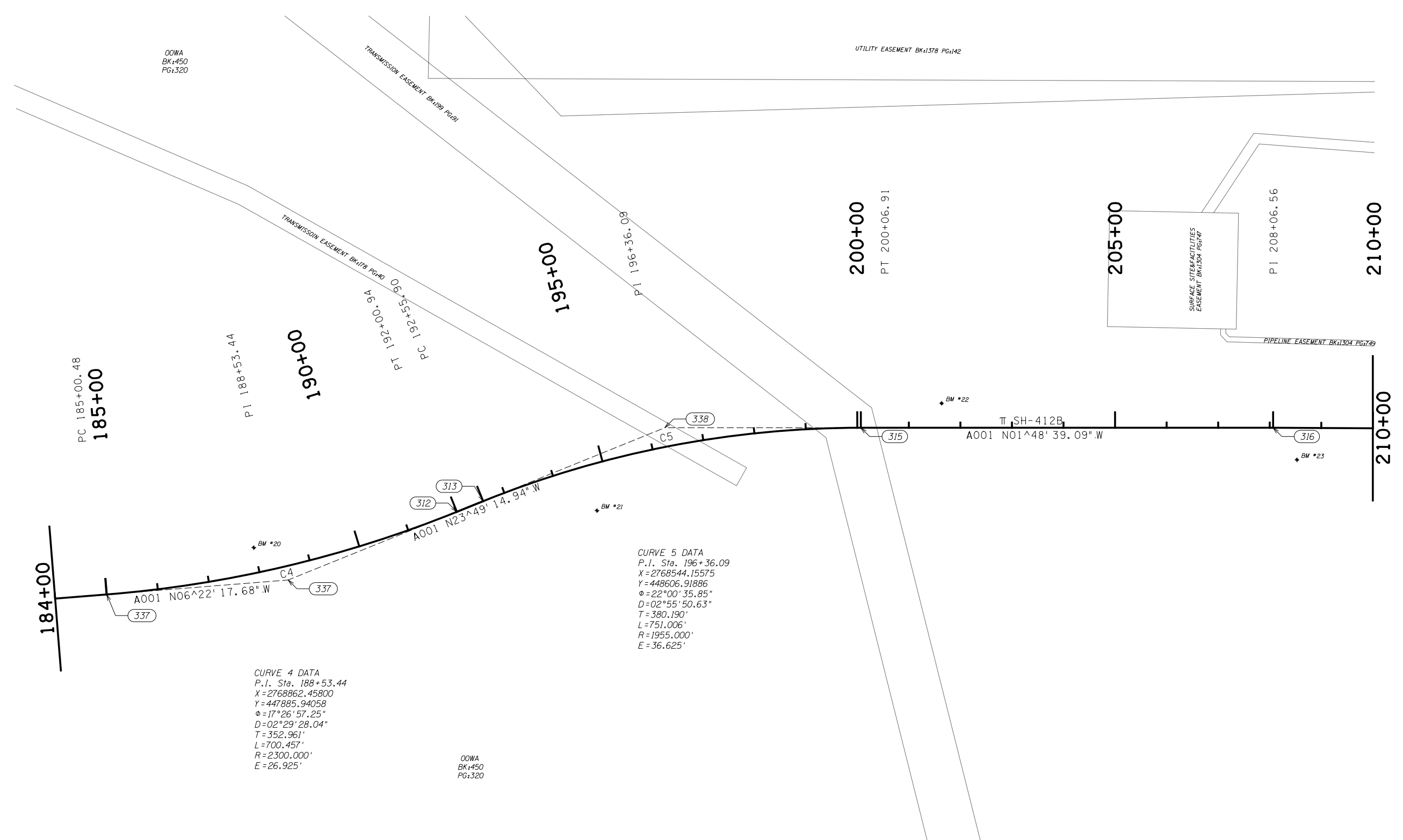
SCALE 0 100 200 300 400 500 Feet

PLS	CEH	12-21
DRAWN	TDL	12-21
CHECKED	TDL	12-21
APPROVED		
CREW		

OKLAHOMA DEPARTMENT OF TRANSPORTATION  
 SURVEY DIVISION

SURVEY DATA SHEET

SWO \_\_\_\_\_



PC 185+00.48  
185+00

PI 188+53.44

190+00

195+00

200+00

205+00

210+00

**CURVE 4 DATA**  
 P.I. Sta. 188+53.44  
 X = 2768862.45800  
 Y = 447885.94058  
 $\phi = 17^{\circ}26'57.25''$   
 D = 02°29'28.04"  
 T = 352.961'  
 L = 700.457'  
 R = 2300.000'  
 E = 26.925'

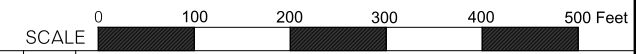
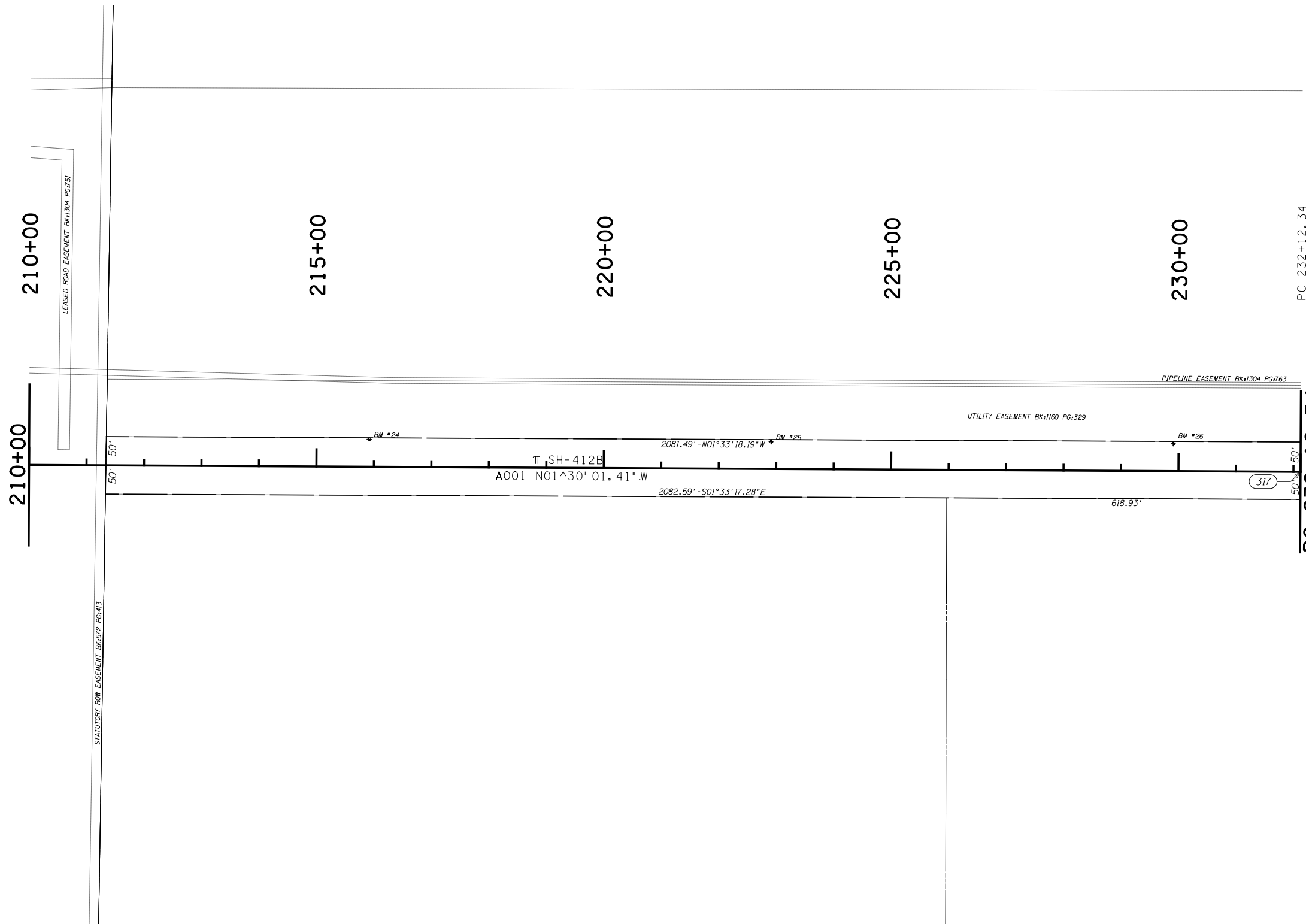
**CURVE 5 DATA**  
 P.I. Sta. 196+36.09  
 X = 2768544.15575  
 Y = 448606.91886  
 $\phi = 22^{\circ}00'35.85''$   
 D = 02°55'50.63"  
 T = 380.190'  
 L = 751.006'  
 R = 1955.000'  
 E = 36.625'

OOWA  
BK+450  
PG+320



SCALE 0 100 200 300 400 500 Feet

PLS	CEH	12-21	OKLAHOMA DEPARTMENT OF TRANSPORTATION SURVEY DIVISION
DRAWN	TDL	12-21	
CHECKED	TDL	12-21	
APPROVED			
CREW			
COUNTY <u>MAYES</u> HIGHWAY <u>SH-412B</u> STATE JOB NO. <u>MA1P</u> SHEET NO. <u>S007</u>			<b>SURVEY DATA SHEET</b> SWO _____



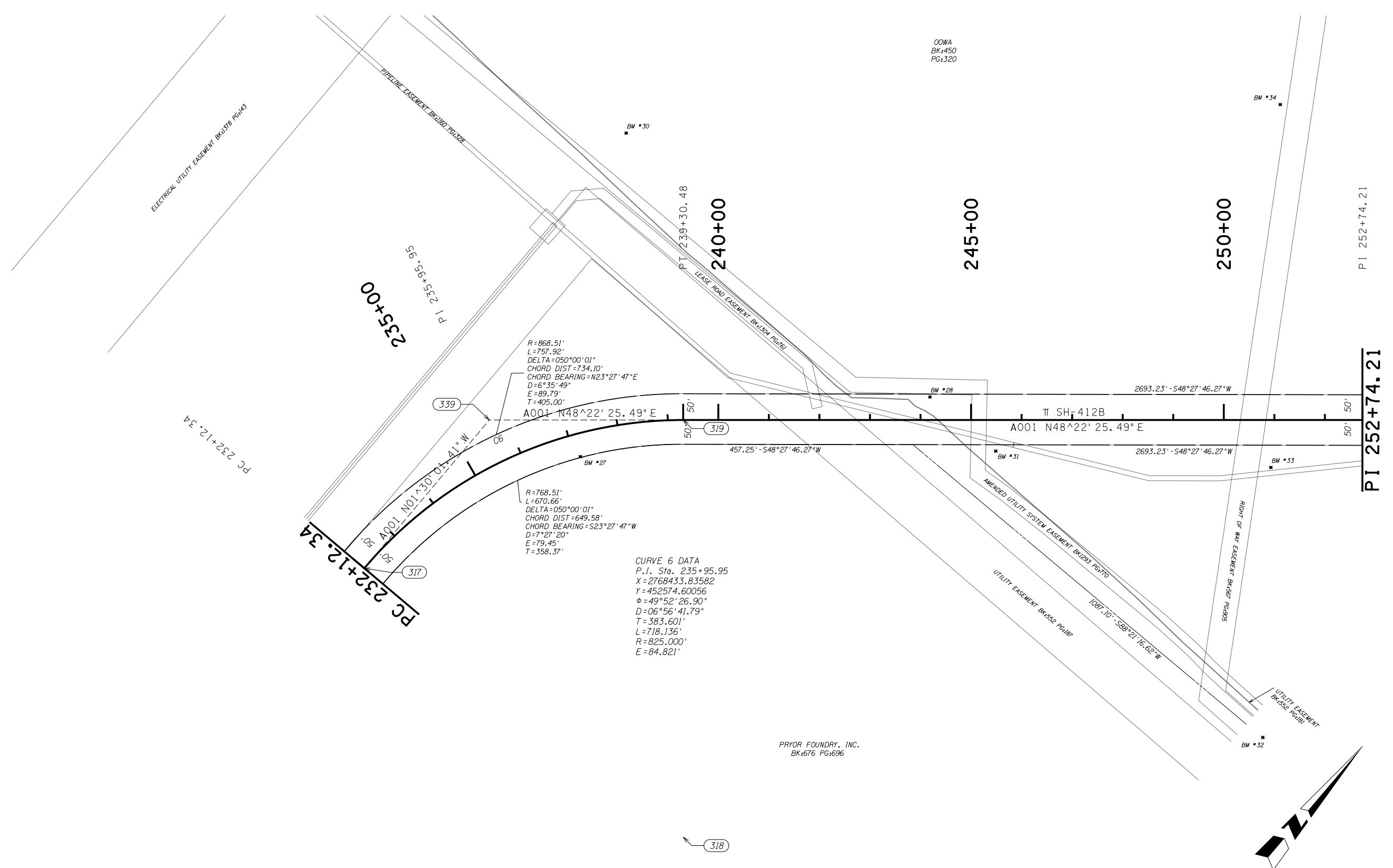
PLS	CEH	12-21
DRAWN	TDL	12-21
CHECKED	TDL	12-21
APPROVED		
CREW		

OKLAHOMA DEPARTMENT OF TRANSPORTATION  
SURVEY DIVISION

### SURVEY DATA SHEET

SWO \_\_\_\_\_





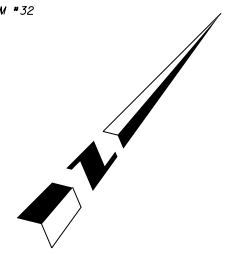
R=868.51'  
 L=757.92'  
 DELTA=050°00'01"  
 CHORD DIST=734.10'  
 CHORD BEARING=N23°27'47"E  
 D=6°35'49"  
 E=89.79'  
 T=405.00'

R=768.51'  
 L=670.66'  
 DELTA=050°00'01"  
 CHORD DIST=649.58'  
 CHORD BEARING=S23°27'47"W  
 D=7°27'20"  
 E=79.45'  
 T=358.37'

**CURVE 6 DATA**  
 P.I. Sta. 235+95.95  
 X=2768433.83582  
 Y=452574.60056  
 φ=49°52'26.90"  
 D=06°56'41.79"  
 T=383.601'  
 L=718.136'  
 R=825.000'  
 E=84.821'

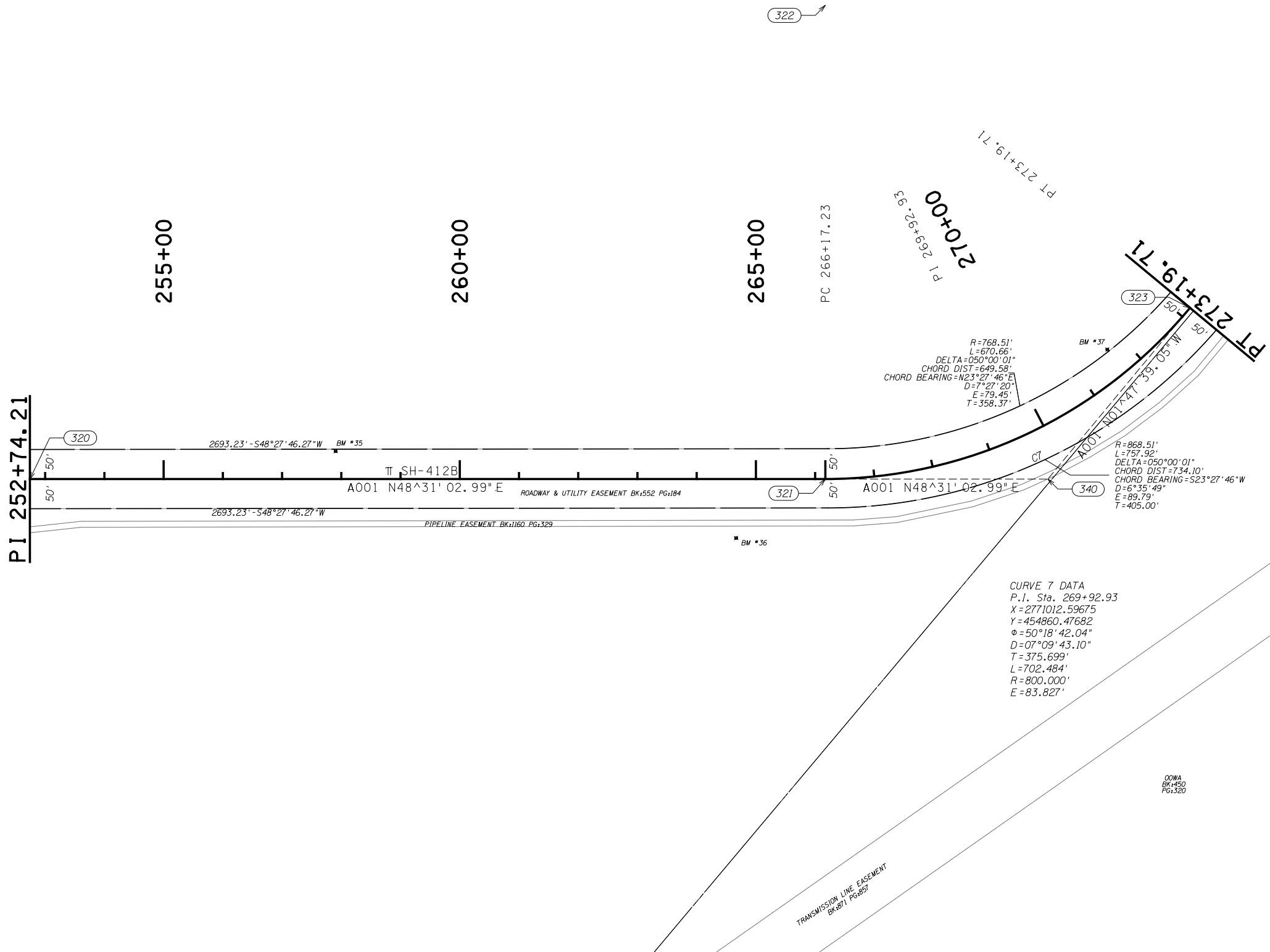
PRYOR FOUNDRY, INC.  
 BK:676 PG:696

OOWA  
 BK:450  
 PG:320



SCALE 0 100 200 300 400 500 Feet

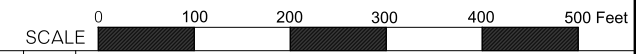
PLS	CEH	12-21	OKLAHOMA DEPARTMENT OF TRANSPORTATION SURVEY DIVISION  <b>SURVEY DATA SHEET</b>  SWO _____
DRAWN	TDL	12-21	
CHECKED	TDL	12-21	
APPROVED			
CREW			
COUNTY <u>MAYES</u> HIGHWAY <u>SH-412B</u> STATE JOB NO. <u>MA1P</u> SHEET NO. <u>S009</u>			



CURVE 7 DATA  
 P.I. Sta. 269+92.93  
 X = 2771012.59675  
 Y = 454860.47682  
 Δ = 50°18'42.04"  
 D = 07°09'43.10"  
 T = 375.699'  
 L = 702.484'  
 R = 800.000'  
 E = 83.827'

TRANSMISSION LINE EASEMENT  
 BK 871 PG 857

OWWA  
 BK 450  
 PG 220



PLS	CEH	12-21
DRAWN	TDL	12-21
CHECKED	TDL	12-21
APPROVED		
CREW		

OKLAHOMA DEPARTMENT OF TRANSPORTATION  
SURVEY DIVISION

## SURVEY DATA SHEET

SWO \_\_\_\_\_

PT 273+19.71

PT 273+19.71

275+00

280+00

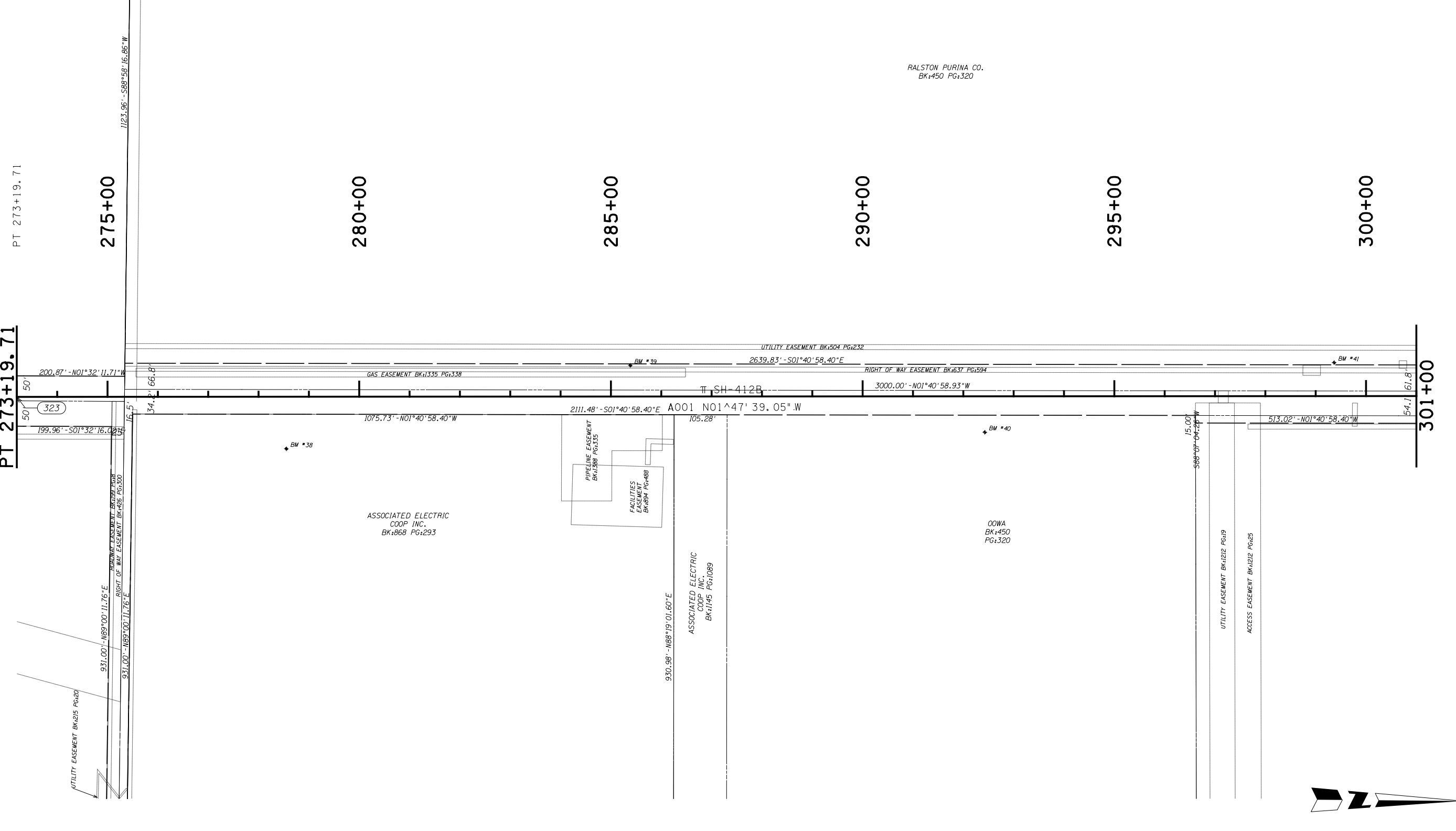
285+00

290+00

295+00

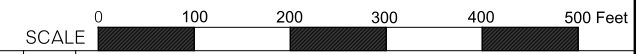
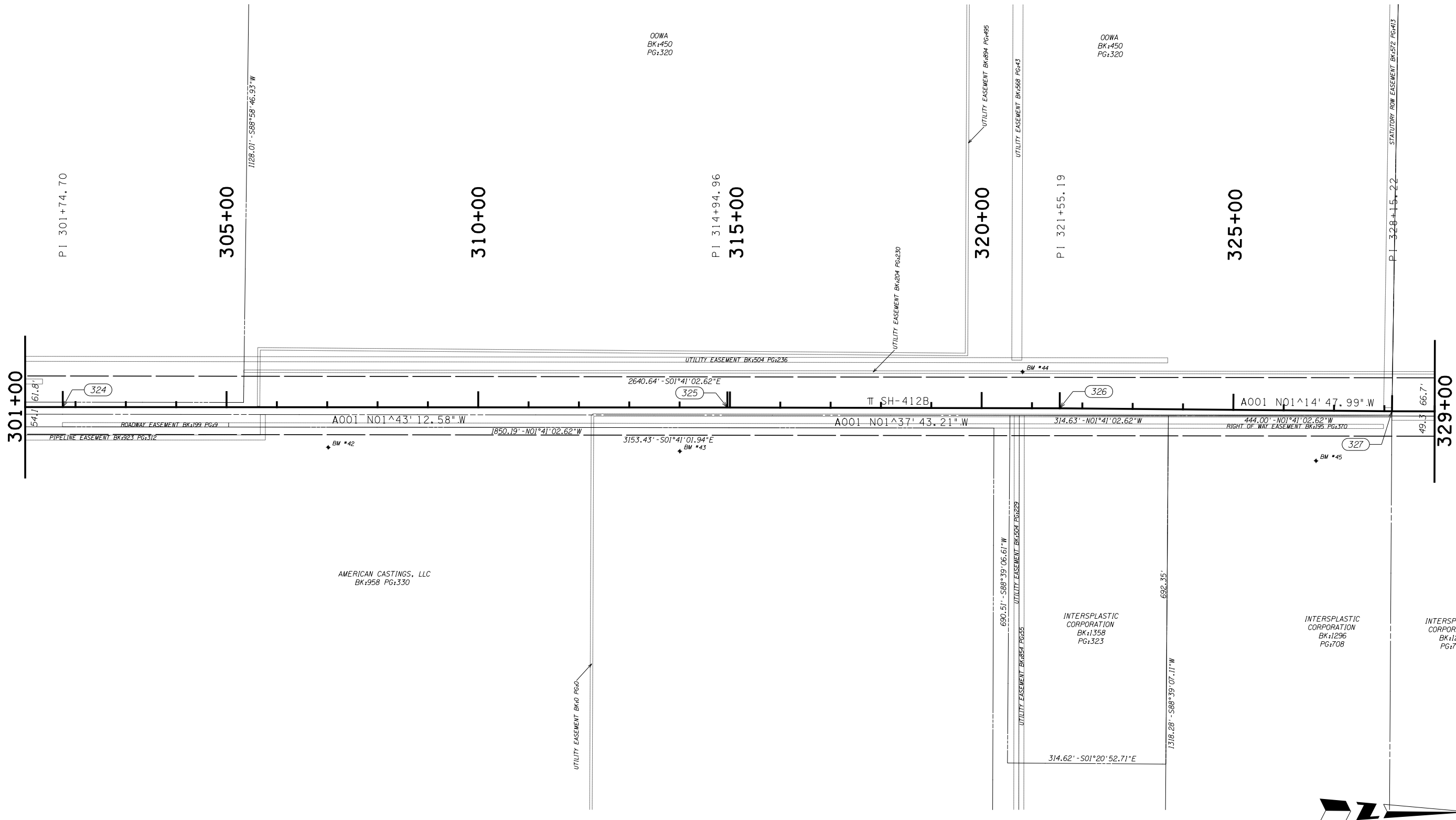
300+00

301+00

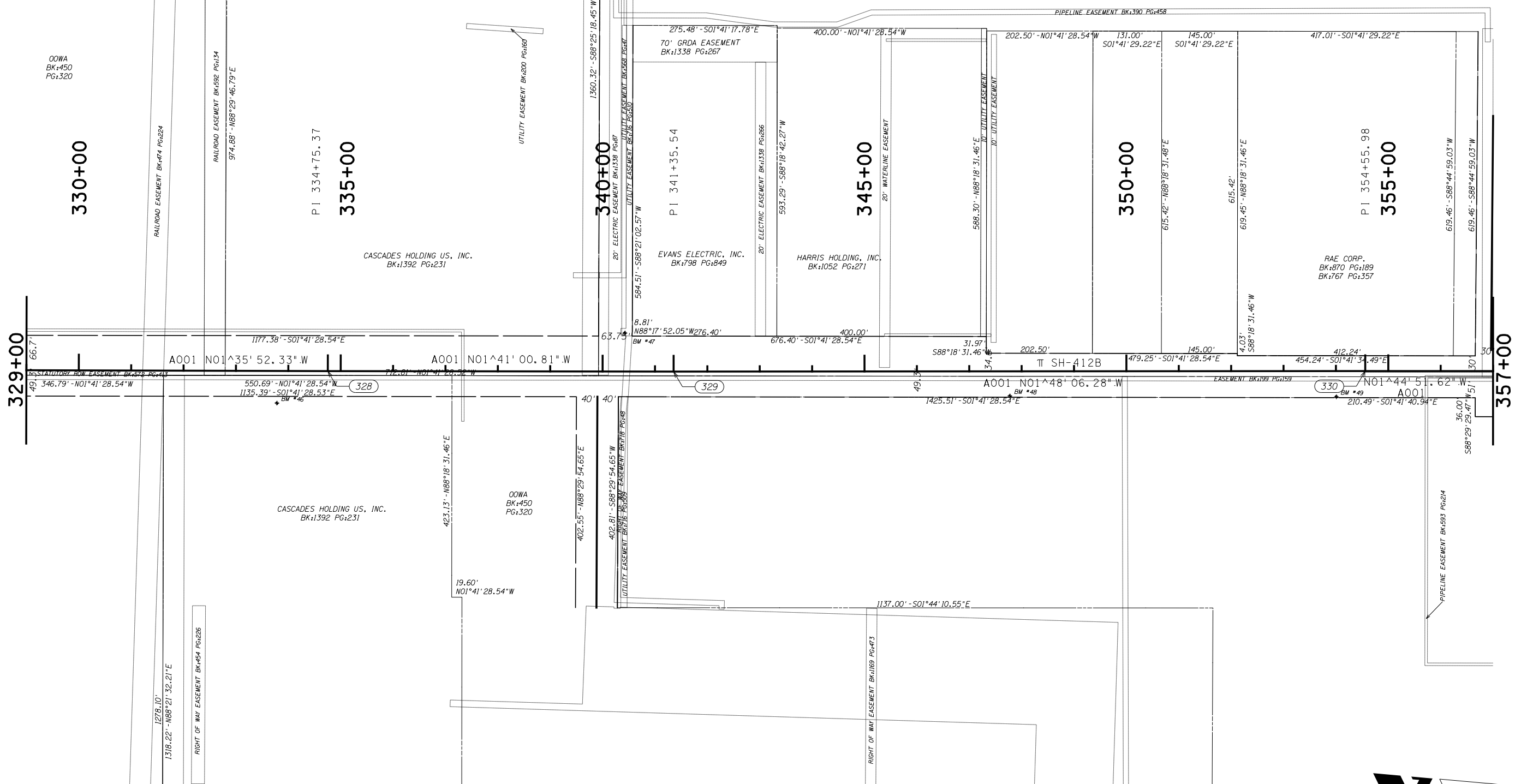


SCALE 0 100 200 300 400 500 Feet

PLS	CEH	12-21	OKLAHOMA DEPARTMENT OF TRANSPORTATION SURVEY DIVISION
DRAWN	TDL	12-21	
CHECKED	TDL	12-21	
APPROVED			
CREW			
COUNTY <u>MAYES</u> HIGHWAY <u>SH-412B</u> STATE JOB NO. <u>MA1P</u> SHEET NO. <u>S011</u>			<p><b>SURVEY DATA SHEET</b></p> <p>SWO _____</p>



PLS	CEH	12-21	OKLAHOMA DEPARTMENT OF TRANSPORTATION SURVEY DIVISION
DRAWN	TDL	12-21	
CHECKED	TDL	12-21	
APPROVED			
CREW			
COUNTY <u>MAYES</u> HIGHWAY <u>SH-412B</u> STATE JOB NO. <u>MA1P</u> SHEET NO. <u>S012</u>			<b>SURVEY DATA SHEET</b> SWO _____



OOWA  
BK:450  
PG:320

330+00

PI 334+75.37  
335+00

340+00

PI 341+35.54  
345+00

350+00

PI 354+55.98  
355+00

357+00

CASCADES HOLDING US, INC.  
BK:1392 PG:231

EVANS ELECTRIC, INC.  
BK:798 PG:849

HARRIS HOLDING, INC.  
BK:1052 PG:271

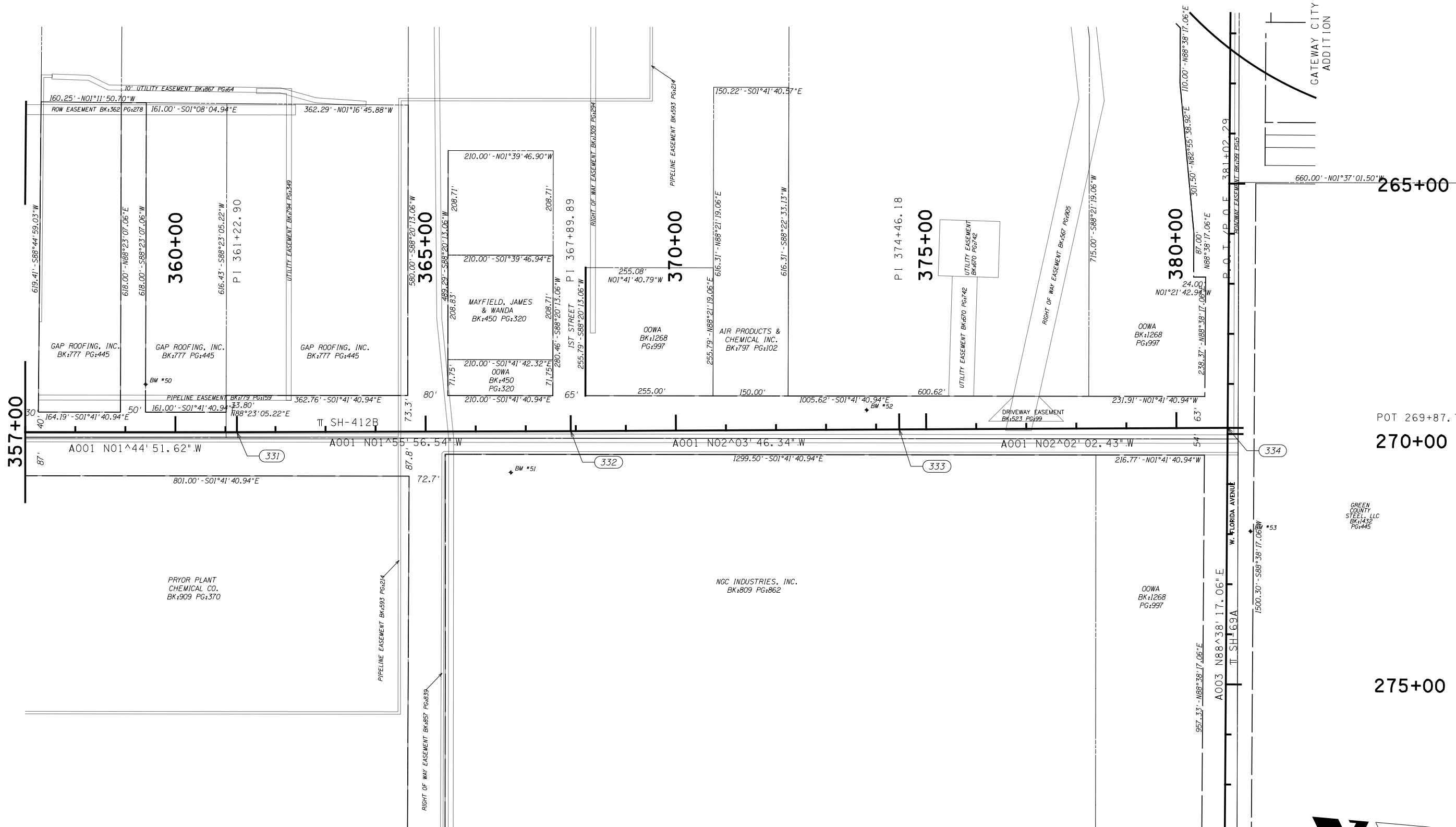
RAE CORP.  
BK:870 PG:189  
BK:767 PG:357

CASCADES HOLDING US, INC.  
BK:1392 PG:231

OOWA  
BK:450  
PG:320

SCALE 0 100 200 300 400 500 Feet

PLS	CEH	12-21	OKLAHOMA DEPARTMENT OF TRANSPORTATION SURVEY DIVISION
DRAWN	TDL	12-21	
CHECKED	TDL	12-21	
APPROVED			
CREW			
COUNTY <u>MAYES</u> HIGHWAY <u>SH-412B</u> STATE JOB NO. <u>MA1P</u> SHEET NO. <u>S013</u>			SURVEY DATA SHEET SWO _____



GATEWAY CITY  
ADDITION



SCALE 0 100 200 300 400 500 Feet

PLS	CEH	12-21	OKLAHOMA DEPARTMENT OF TRANSPORTATION SURVEY DIVISION
DRAWN	TDL	12-21	
CHECKED	TDL	12-21	
APPROVED			
CREW			
SURVEY DATA SHEET			SWO _____
COUNTY	MAYES	HIGHWAY SH-412B STATE JOB NO. MA1P SHEET NO. S014	