

STATE OF OKLAHOMA
DEPARTMENT OF TRANSPORTATION

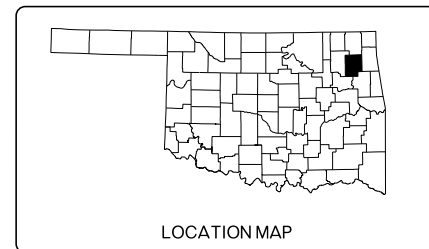
PLAN OF PROPOSED
STATE HIGHWAY
STATE JOB NO. 35353(04)
MAYES COUNTY
GRADE, DRAIN, & SURFACE
STATE HIGHWAY 412B
CONTROL SECTION NO. 412B-49-48

OKLAHOMA DEPARTMENT OF TRANSPORTATION
THIS DOCUMENT IS PRELIMINARY
IN NATURE AND IS NOT A FINAL,
SIGNED AND SEALED DOCUMENT.
JANUARY 2023

OKLAHOMA DEPARTMENT OF TRANSPORTATION
**R/W UTILITY
MEETING**
JANUARY 2023

CONTROL SURVEY DATA:
SEE SURVEY DATA SHEETS

THESE SHEETS ARE FOR INFORMATION ONLY. THIS IS A COMPILATION OF THE PROPOSED UTILITY RELOCATION PLANS OF THE AFFECTED UTILITY OWNERS. THE LOCATIONS SHOWN ARE PROPOSED AND MAY NOT REFLECT THE CURRENT OR FINAL LOCATIONS. IT IS STILL THE RESPONSIBILITY OF THE CONTRACTOR AND THE SUBCONTRACTING TO VERIFY THE ACTUAL LOCATIONS OF THE UTILITIES BY CONTACTING THE UTILITY OWNERS AND/OR OKIE AT 1-800-522-6543



SH-412B DESIGN DATA

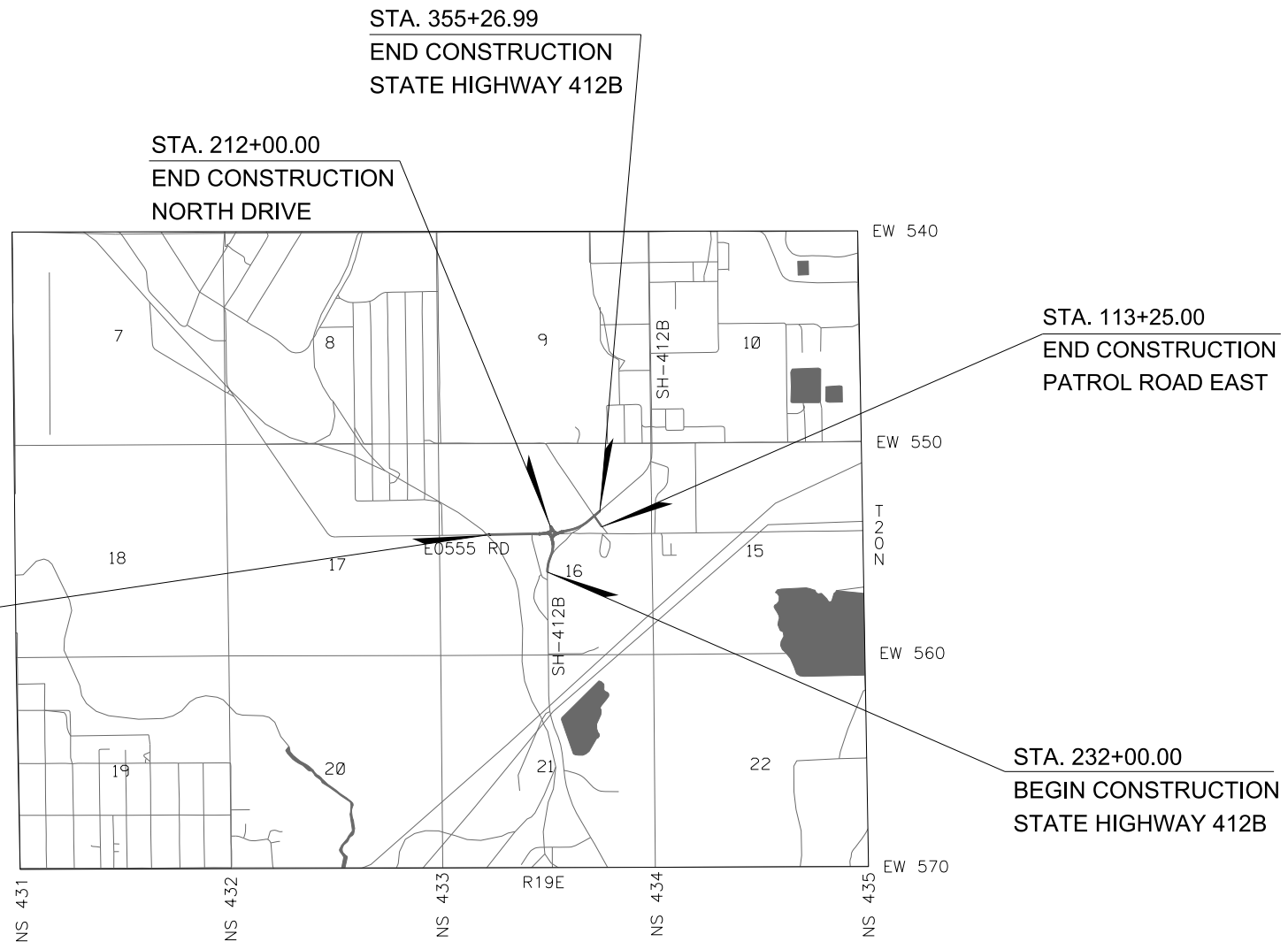
ADT 2022	=	2970
ADT 2042	=	4970
DESIGN SPEED	=	45/55 MPH
D	=	60%
T3	=	10.9%
FLEX ESALS	=	4.51 M

SCALES 1"
PLAN 1" = 50'
PROFILE HOR. 1" = 50'
VER. 1" = 10'
LAYOUT MAP 1" = 2,000'

CONVENTIONAL SYMBOLS

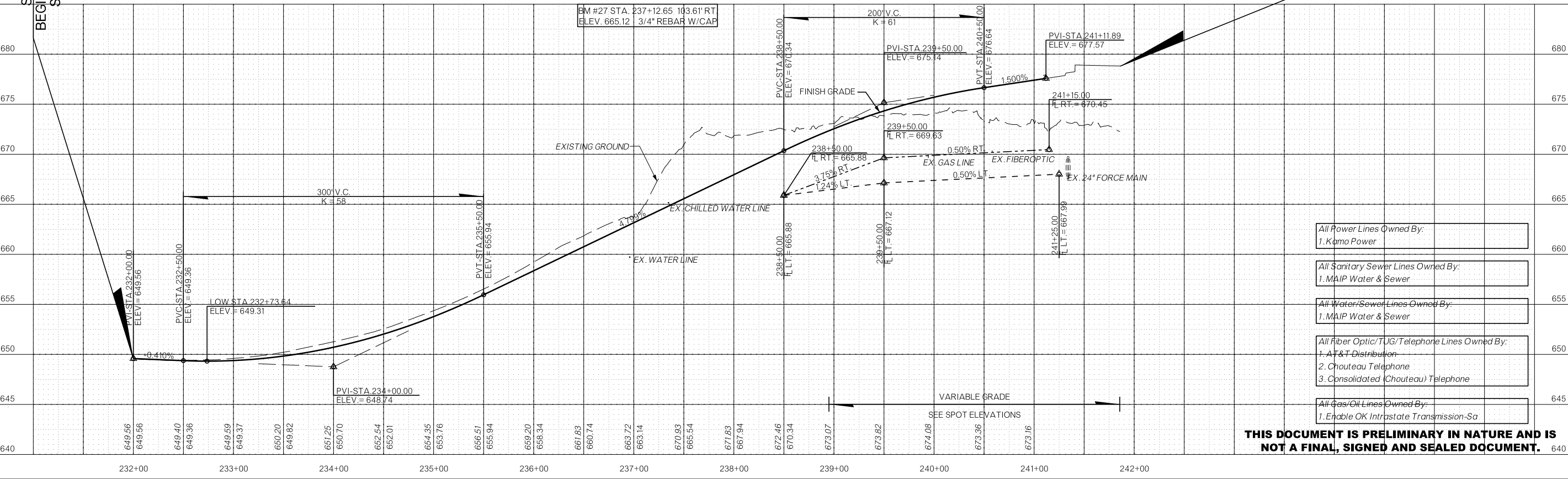
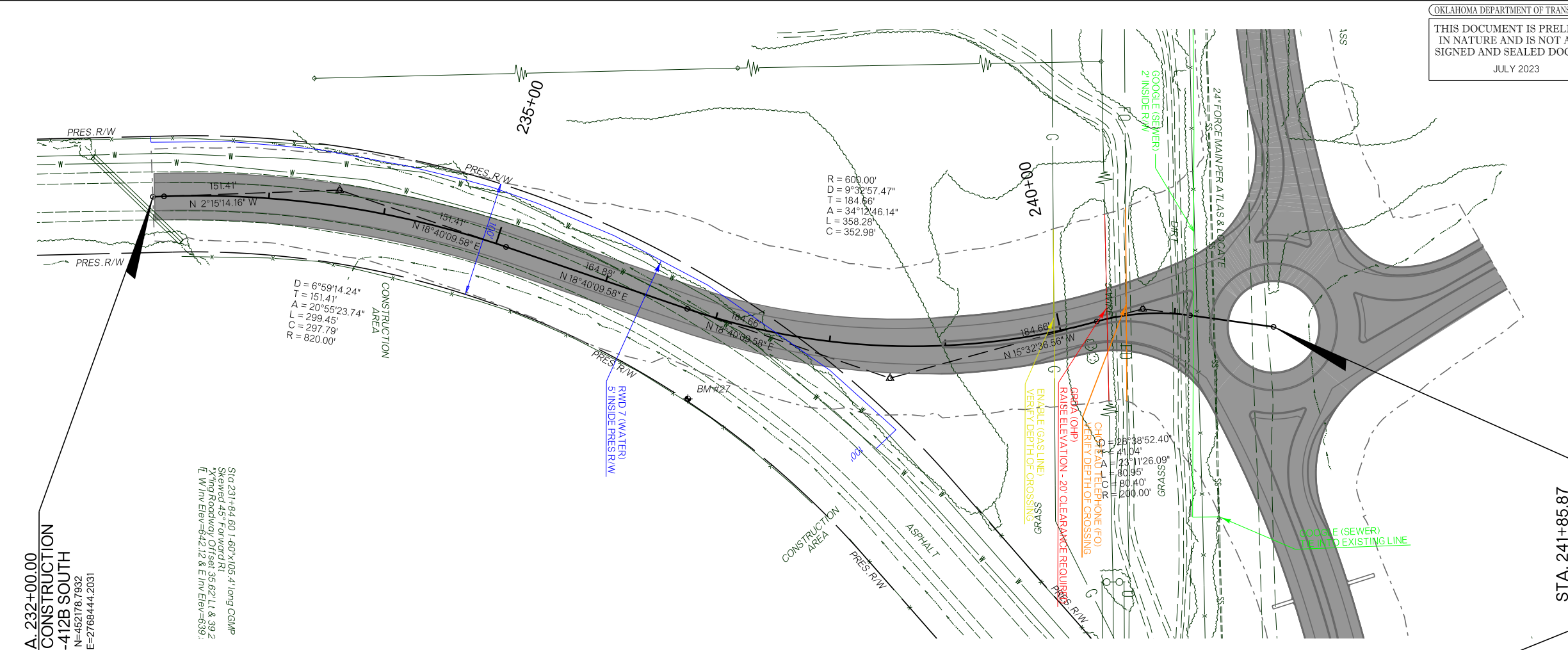
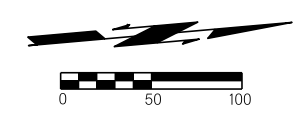
	PROPOSED ROAD		TELEPHONE UNDERGROUND
	RAILROADS		SANITARY SEWER
	RANGE & TOWNSHIP		GAS LINE
	SECTION LINES		WATER LINE
	QUARTER SECTION LINES		DRAINAGE STRUCTURES - IN PLACE
	FENCES		DRAINAGE STRUCTURES - NEW
	GROUND LINE		RIGHT-OF-WAY LINES - EXISTING
	EXISTING ROADS		RIGHT-OF-WAY LINES - NEW
	BASE LINE		RIGHT-OF-WAY MARKERS - IN PLACE
	GRADE LINES		RIGHT-OF-WAY MARKERS - REMOVE & REPLACE
	TELEPHONE & TELEGRAPH		RIGHT-OF-WAY MARKERS - NEW
	POWER LINES		CONTROLLED ACCESS
	BUILDINGS		RIGHT-OF-WAY FENCE
	OIL WELL		

2019 OKLAHOMA STANDARD SPECIFICATIONS FOR HIGHWAY CONSTRUCTION GOVERN, APPROVED BY THE U.S. DEPARTMENT OF TRANSPORTATION, FEDERAL HIGHWAY ADMINISTRATION, DECEMBER 18 2019.



PRELIMINARY
UTILITY RELOCATION PLANS

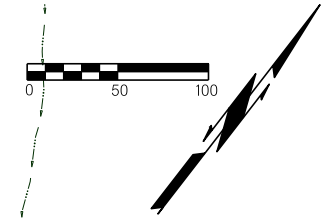




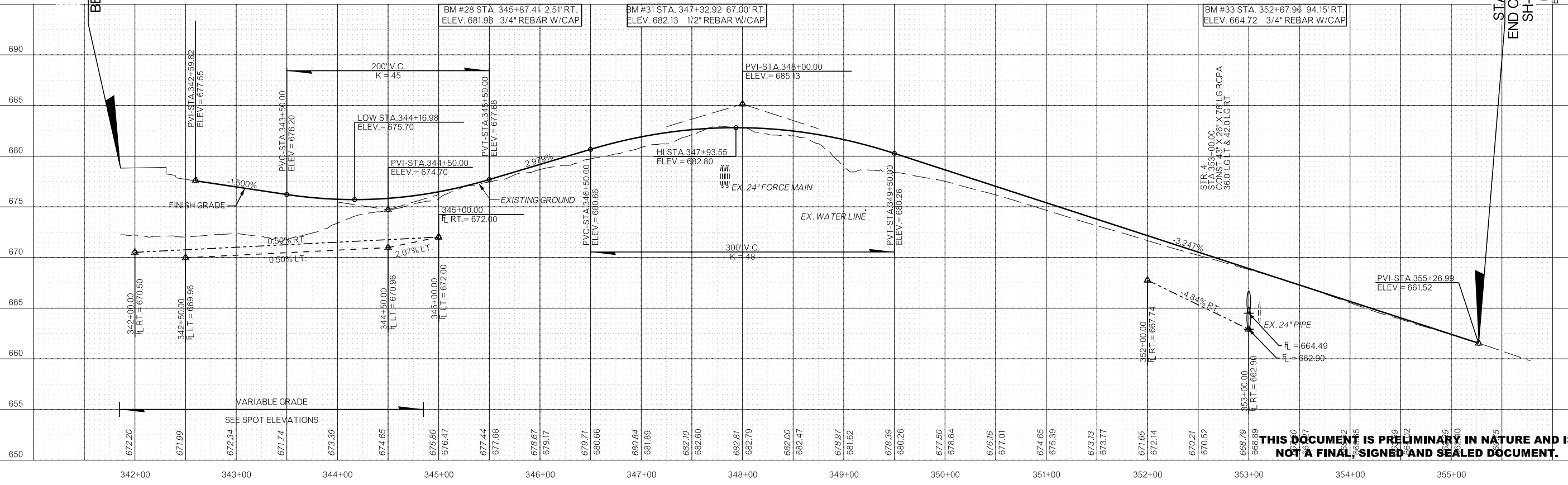
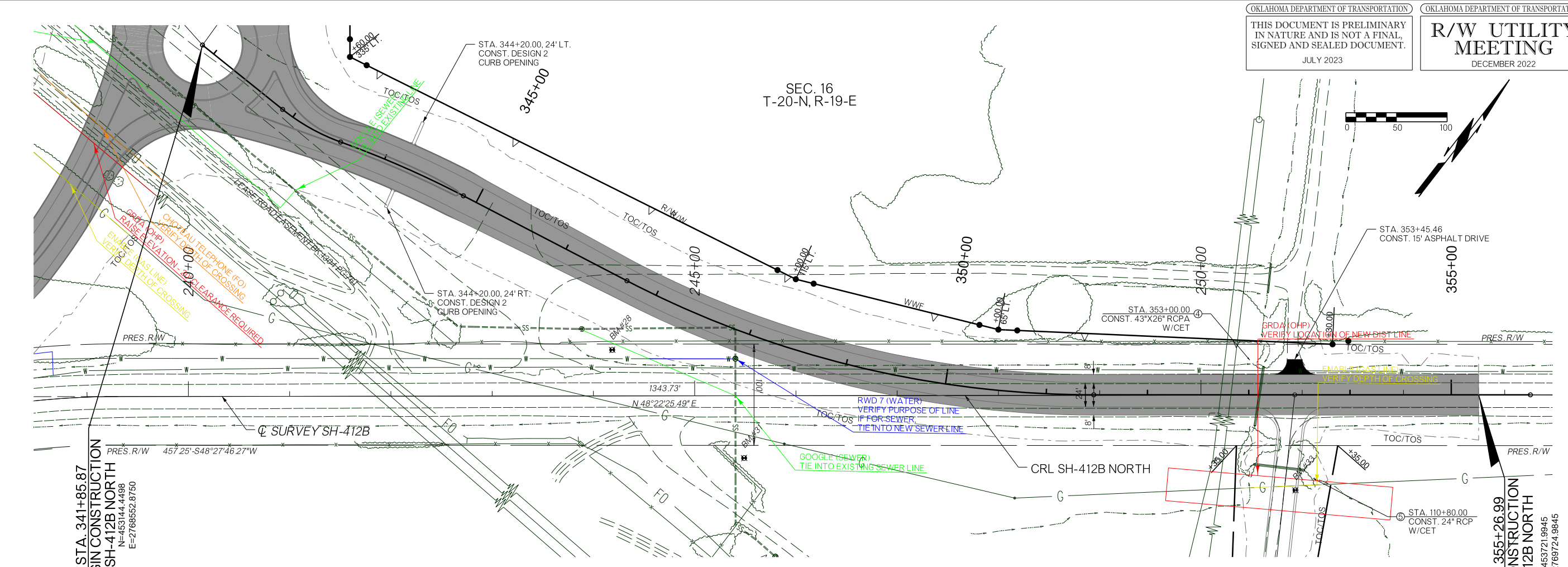
- All Power Lines Owned By:
1. Kamo Power
- All Sanitary Sewer Lines Owned By:
1. MAIP Water & Sewer
- All Water/Sewer Lines Owned By:
1. MAIP Water & Sewer
- All Fiber Optic/TUG/Telephone Lines Owned By:
1. AT&T Distribution
2. Chouteau Telephone
3. Consolidated (Chouteau) Telephone
- All Gas/Oil Lines Owned By:
1. Enable OK Intrastate Transmission-Sa

THIS DOCUMENT IS PRELIMINARY IN NATURE AND IS NOT A FINAL, SIGNED AND SEALED DOCUMENT.

\$DATE\$\$
 \$PRF\$\$
 \$DCN\$\$



SEC. 16
 T-20-N, R-19-E



THIS DOCUMENT IS PRELIMINARY IN NATURE AND IS NOT A FINAL, SIGNED AND SEALED DOCUMENT.

\$DATE\$\$

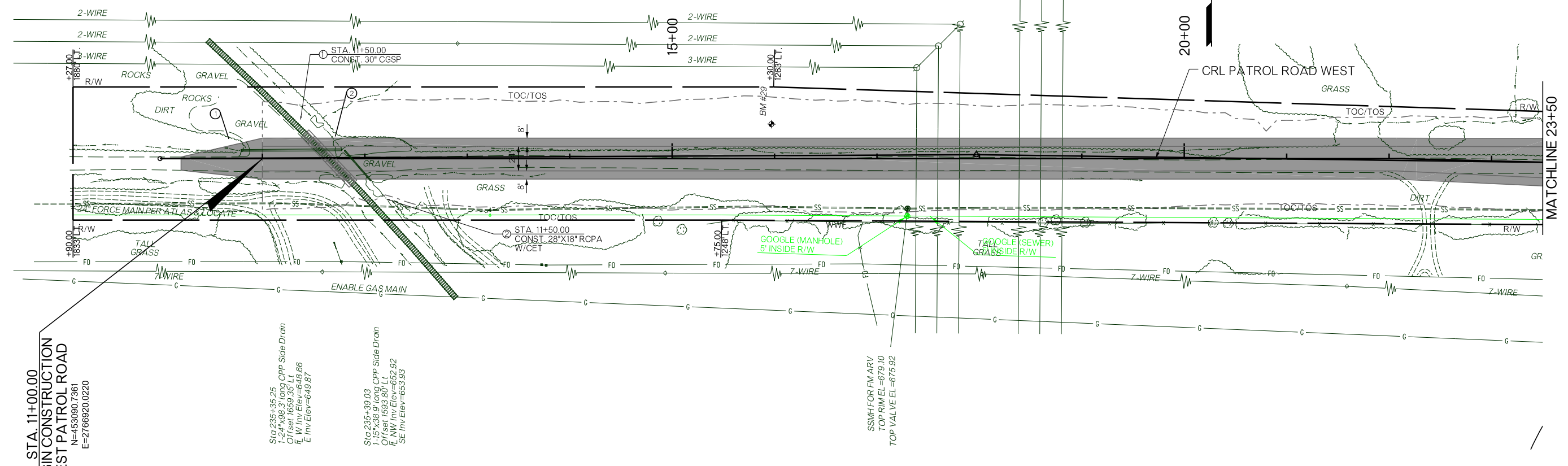
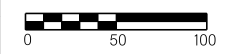
\$PRF\$\$

\$DCN\$\$

SEC. 16
T-20-N, R-19-E

OKLAHOMA DEPARTMENT OF TRANSPORTATION
 THIS DOCUMENT IS PRELIMINARY
 IN NATURE AND IS NOT A FINAL,
 SIGNED AND SEALED DOCUMENT.
 JULY 2023

OKLAHOMA DEPARTMENT OF TRANSPORTATION
**R/W UTILITY
 MEETING**
 DECEMBER 2022

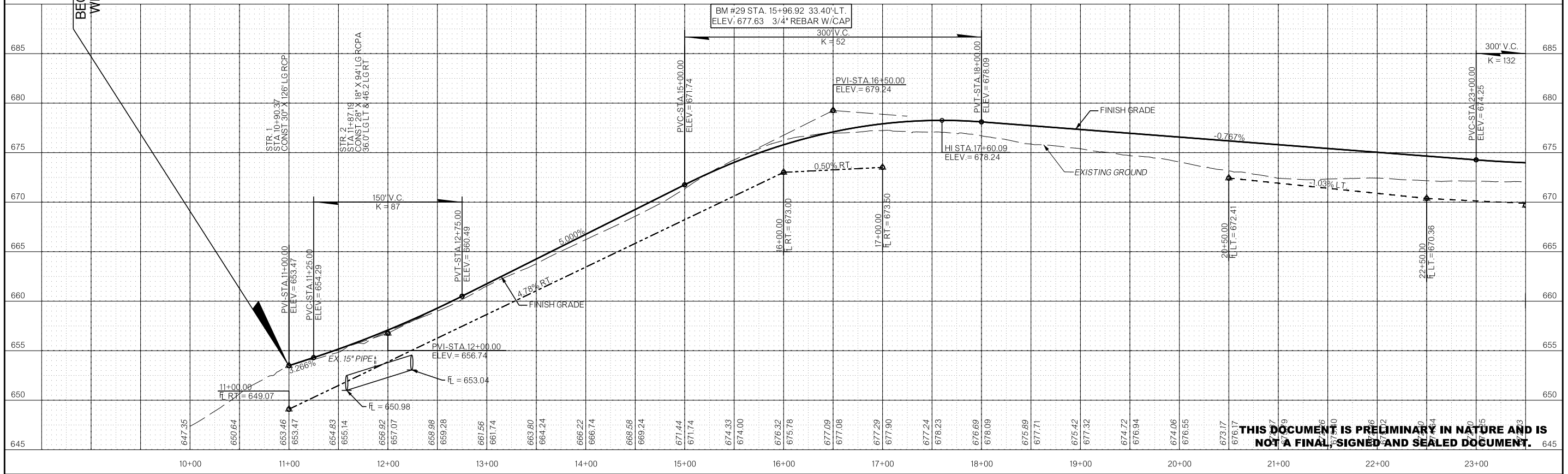


STA. 11+00.00
 BEGIN CONSTRUCTION
 WEST PATROL ROAD
 N=453090.7361
 E=2766920.0220

Sta. 295+35.25
 1-24"x38.31" Long CPP Side Drain
 Offset 1659.35' LI
 Fl. W. Inv. Elev = 648.66
 E. Inv. Elev = 649.87

Sta. 235+39.03
 1-15"x36.91" Long CPP Side Drain
 Offset 1593.80' LI
 Fl. NW Inv. Elev = 652.92
 SE Inv. Elev = 653.93

SSMH FOR FM ARV
 TOP RIM EL = 679.10
 TOP VALVE EL = 675.92

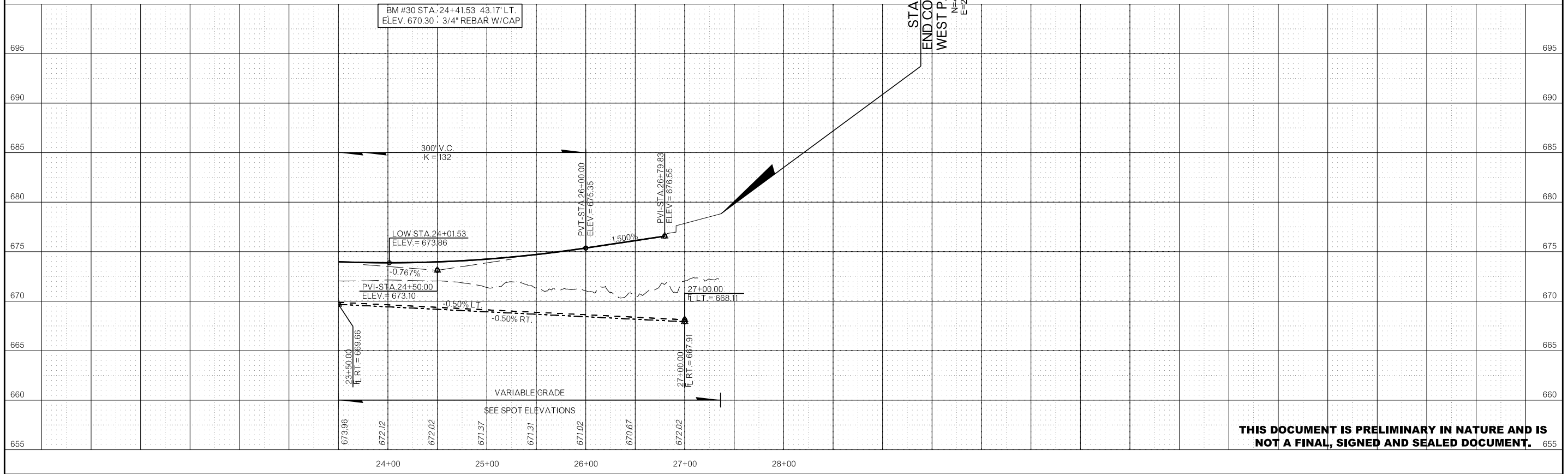
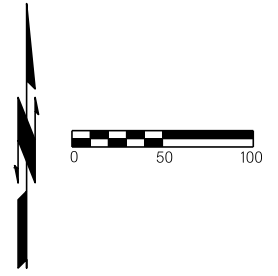
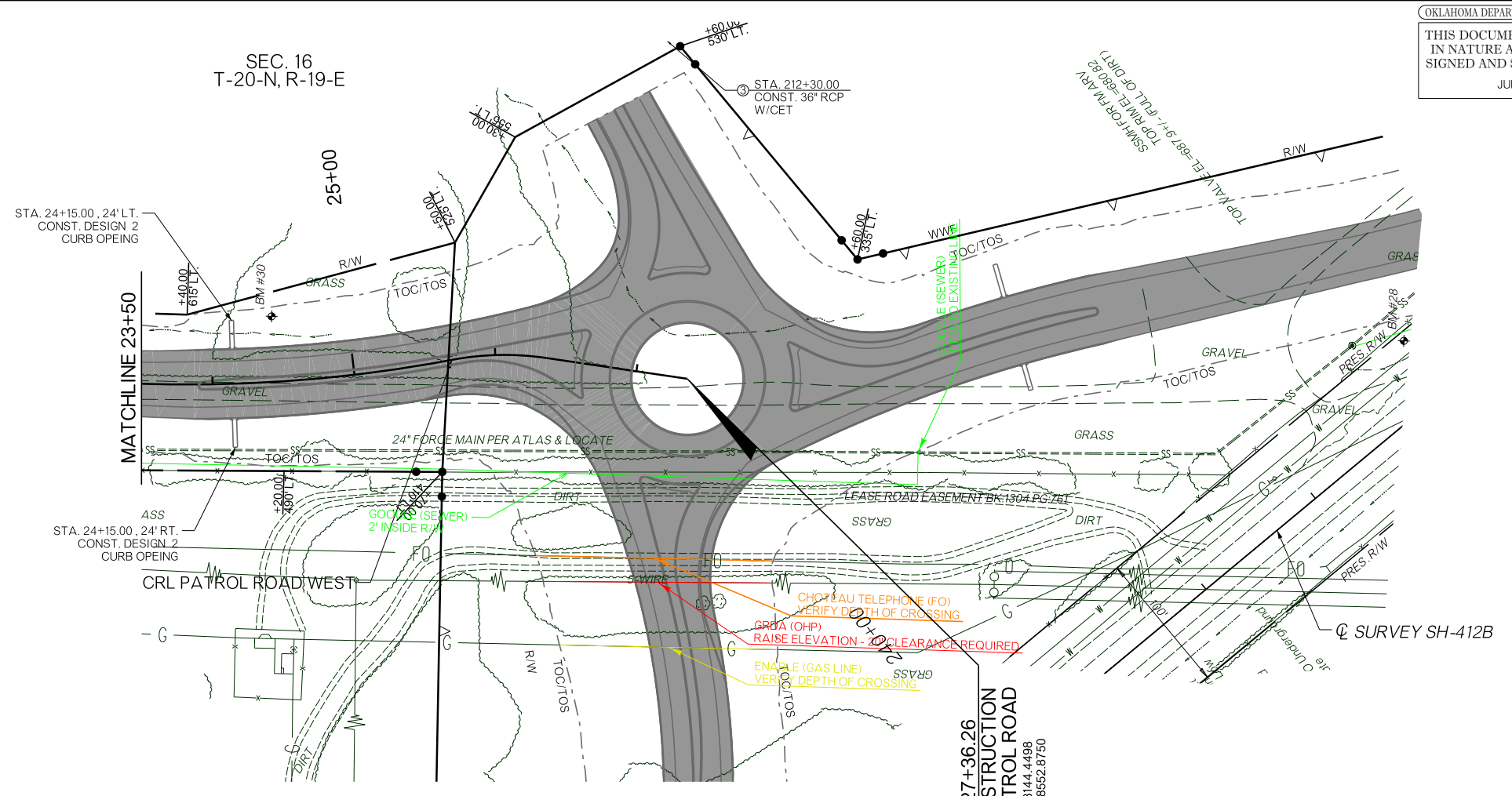


THIS DOCUMENT IS PRELIMINARY IN NATURE AND IS NOT A FINAL SIGNED AND SEALED DOCUMENT.

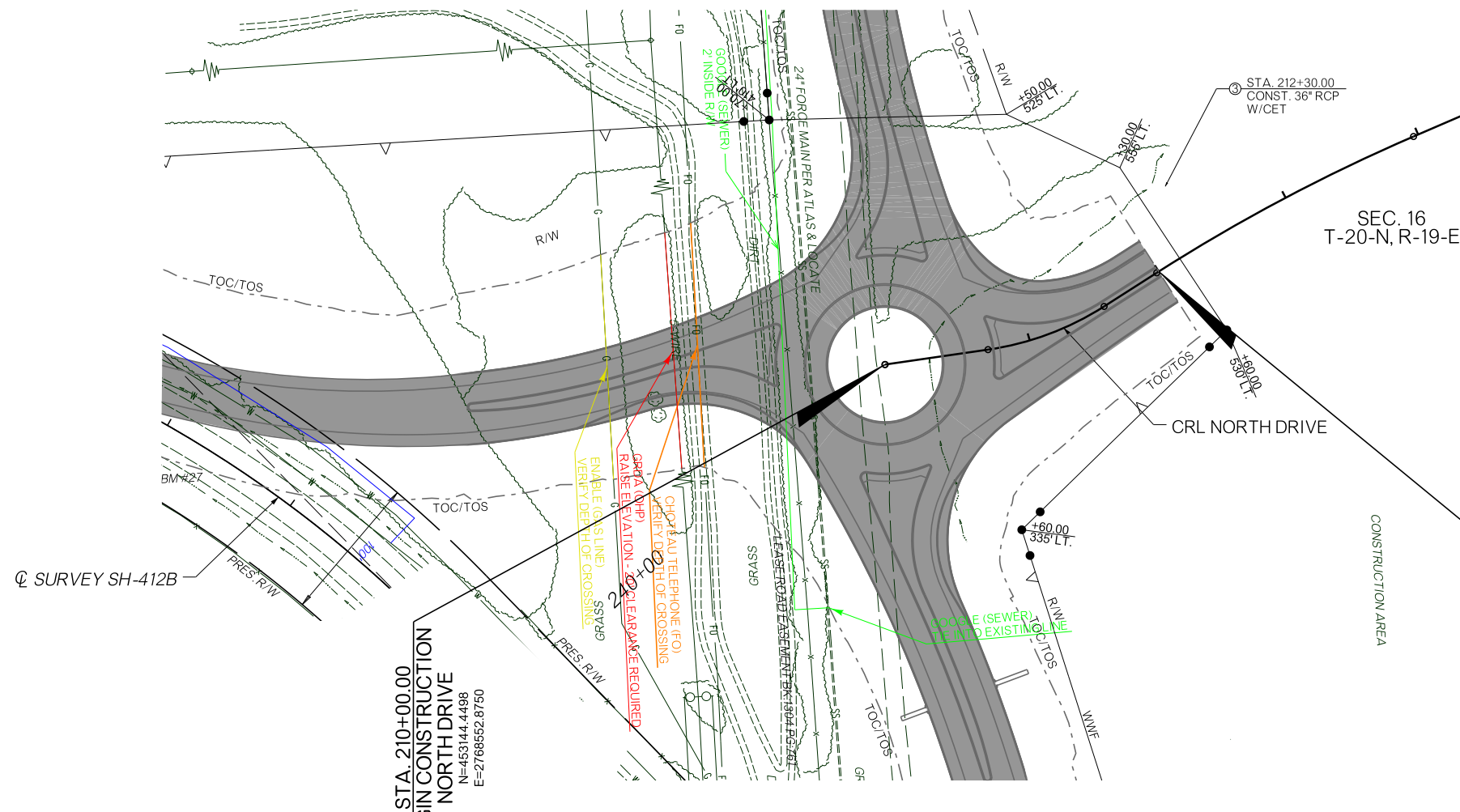
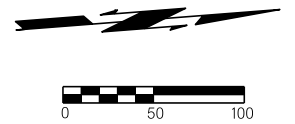
DATE \$\$\$

PRF \$\$\$

DN \$\$\$



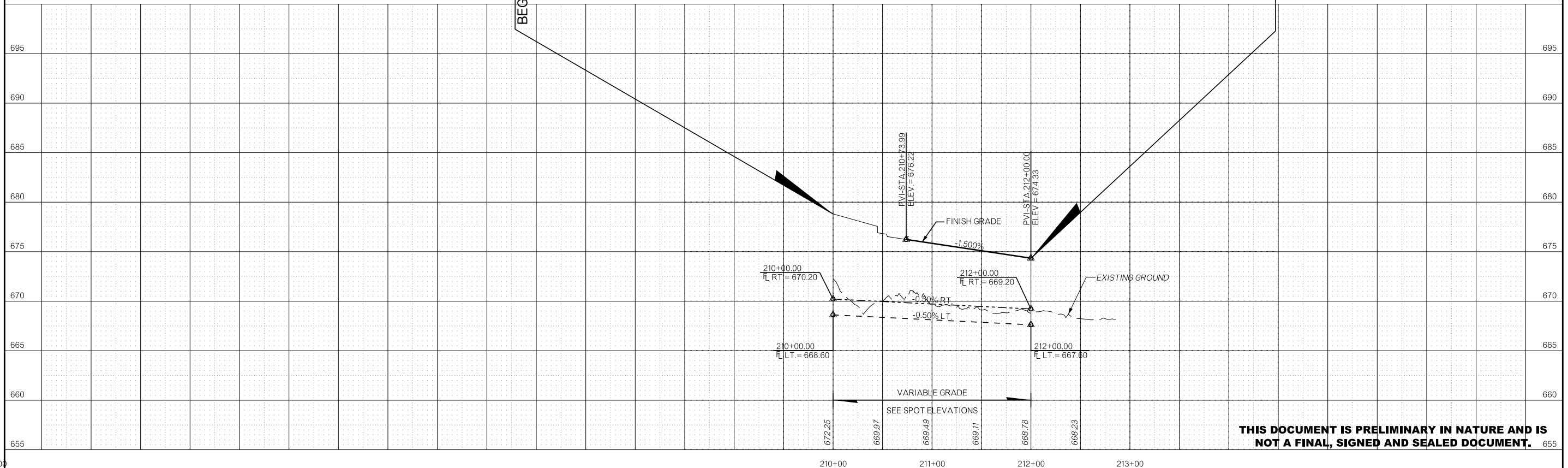
THIS DOCUMENT IS PRELIMINARY IN NATURE AND IS NOT A FINAL, SIGNED AND SEALED DOCUMENT.



☉ SURVEY SH-412B

STA. 210+00.00
 BEGIN CONSTRUCTION
 NORTH DRIVE
 N=453144.4488
 E=2766552.8750

STA. 212+00.00
 END CONSTRUCTION
 NORTH DRIVE
 N=453333.5551
 E=2766496.1790



THIS DOCUMENT IS PRELIMINARY IN NATURE AND IS NOT A FINAL, SIGNED AND SEALED DOCUMENT.

\$\$\$ DATES \$\$\$

\$\$\$ PRF \$\$\$

\$\$\$ DGN \$\$\$

SDATES

SDPRF \$\$

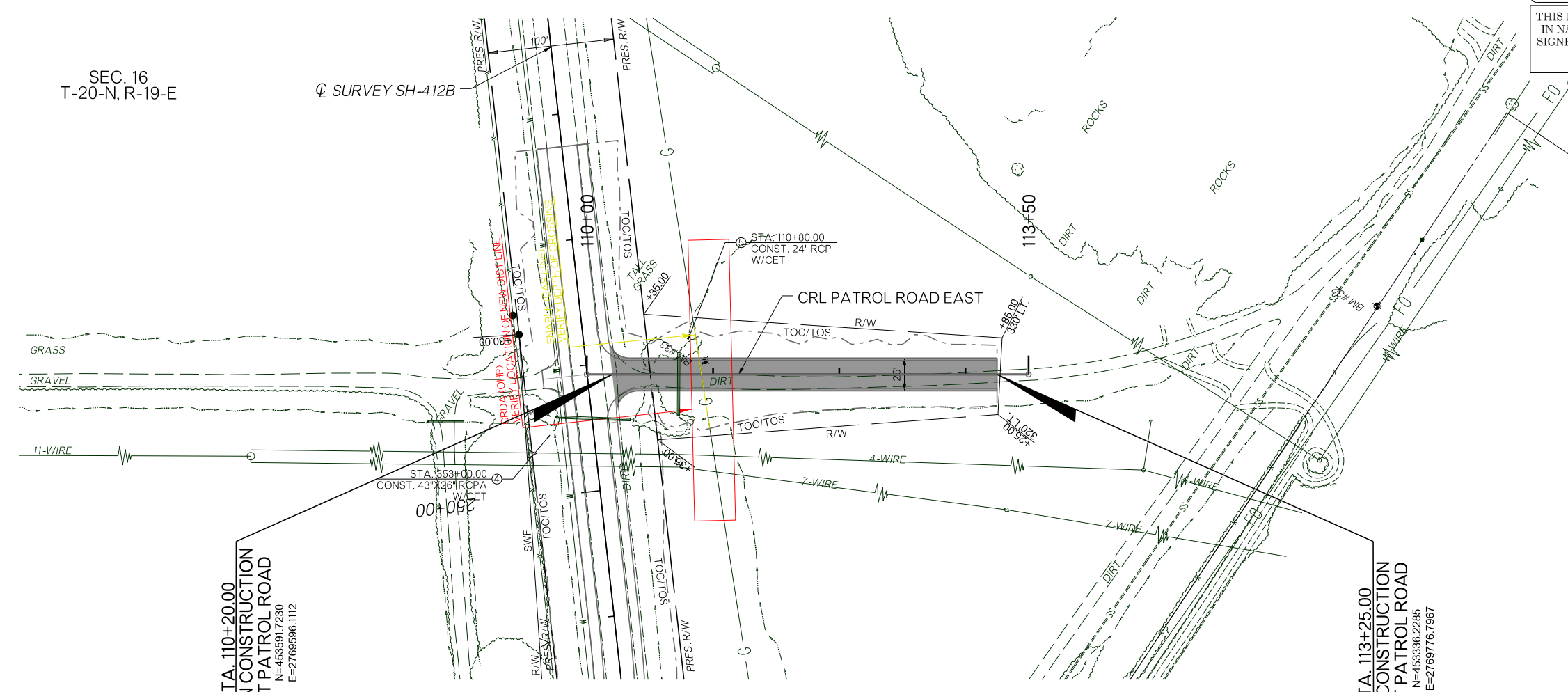
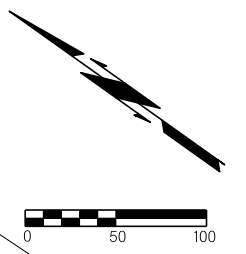
SDCN \$\$

SEC. 16
T-20-N, R-19-E

Q SURVEY SH-412B

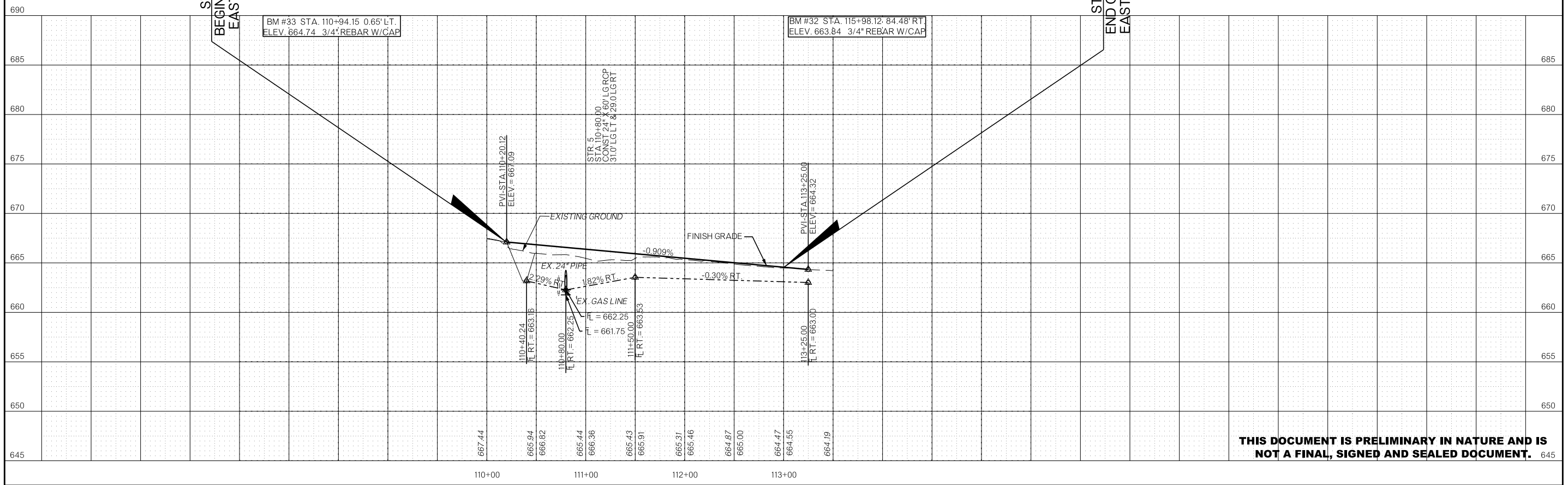
OKLAHOMA DEPARTMENT OF TRANSPORTATION
 THIS DOCUMENT IS PRELIMINARY
 IN NATURE AND IS NOT A FINAL,
 SIGNED AND SEALED DOCUMENT.
 JULY 2023

OKLAHOMA DEPARTMENT OF TRANSPORTATION
**R/W UTILITY
 MEETING**
 DECEMBER 2022



STA. 110+20.00
 BEGIN CONSTRUCTION
 EAST PATROL ROAD
 N=463691.7230
 E=2769596.1112

STA. 113+25.00
 END CONSTRUCTION
 EAST PATROL ROAD
 N=453336.2285
 E=2769776.7967



THIS DOCUMENT IS PRELIMINARY IN NATURE AND IS NOT A FINAL, SIGNED AND SEALED DOCUMENT.