



# OKLAHOMA Transportation

Contract Identification No. 2342  
Preparation of Construction Plans  
(Grade, Drain, Bridge and Surface)

McCurtain County



# Project Team



Paul Green, PE



Cort Westphal, PE



Eric Waggoner, PE



Brandon Huxford, PE

# PROJECT UNDERSTANDING

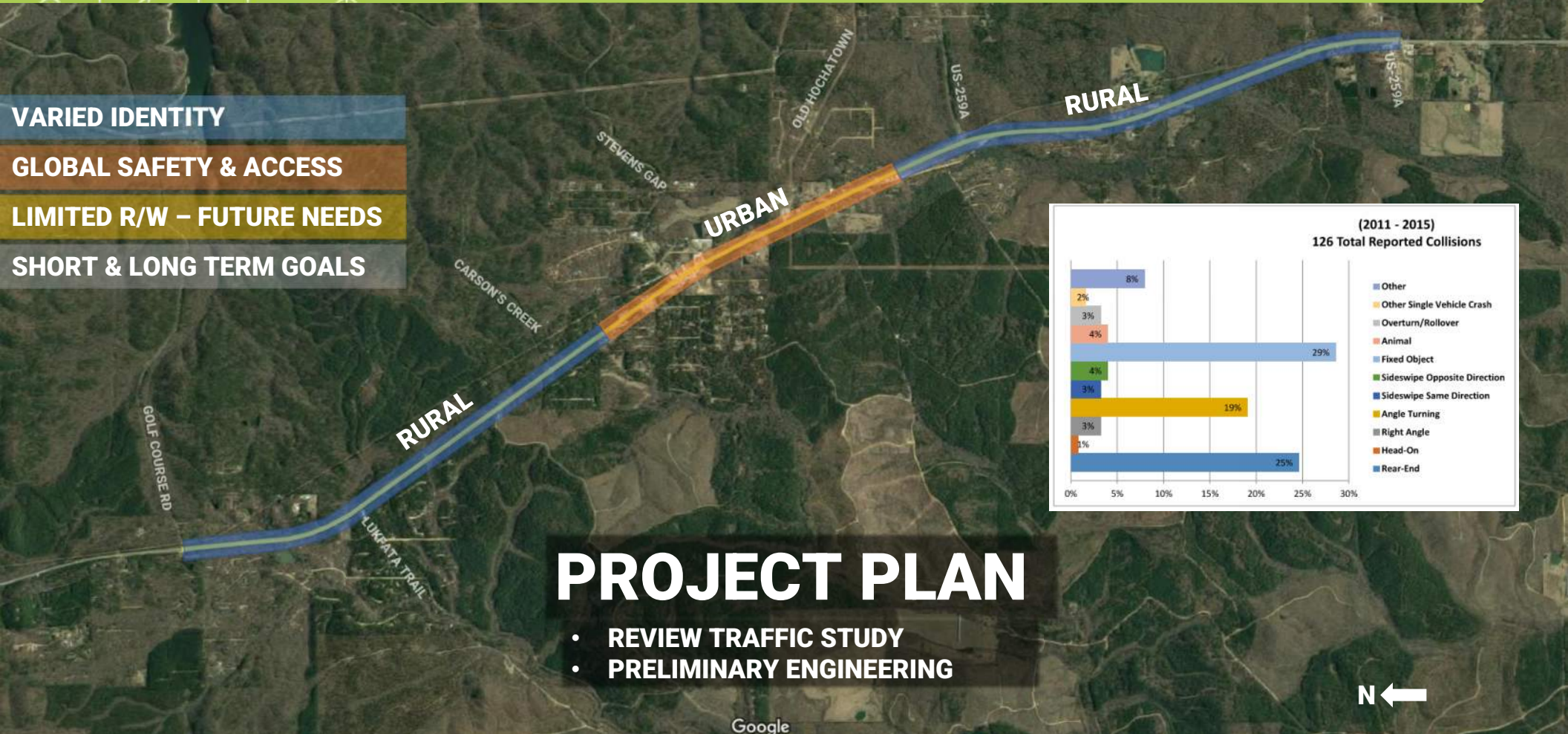
## US-259 - CHALLENGES

**VARIED IDENTITY**

**GLOBAL SAFETY & ACCESS**

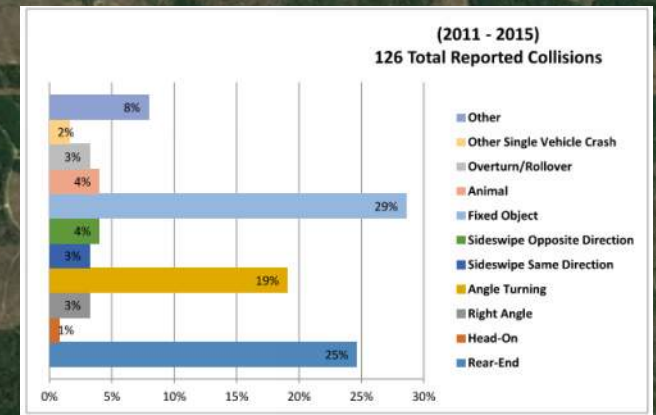
**LIMITED R/W – FUTURE NEEDS**

**SHORT & LONG TERM GOALS**



# PROJECT PLAN

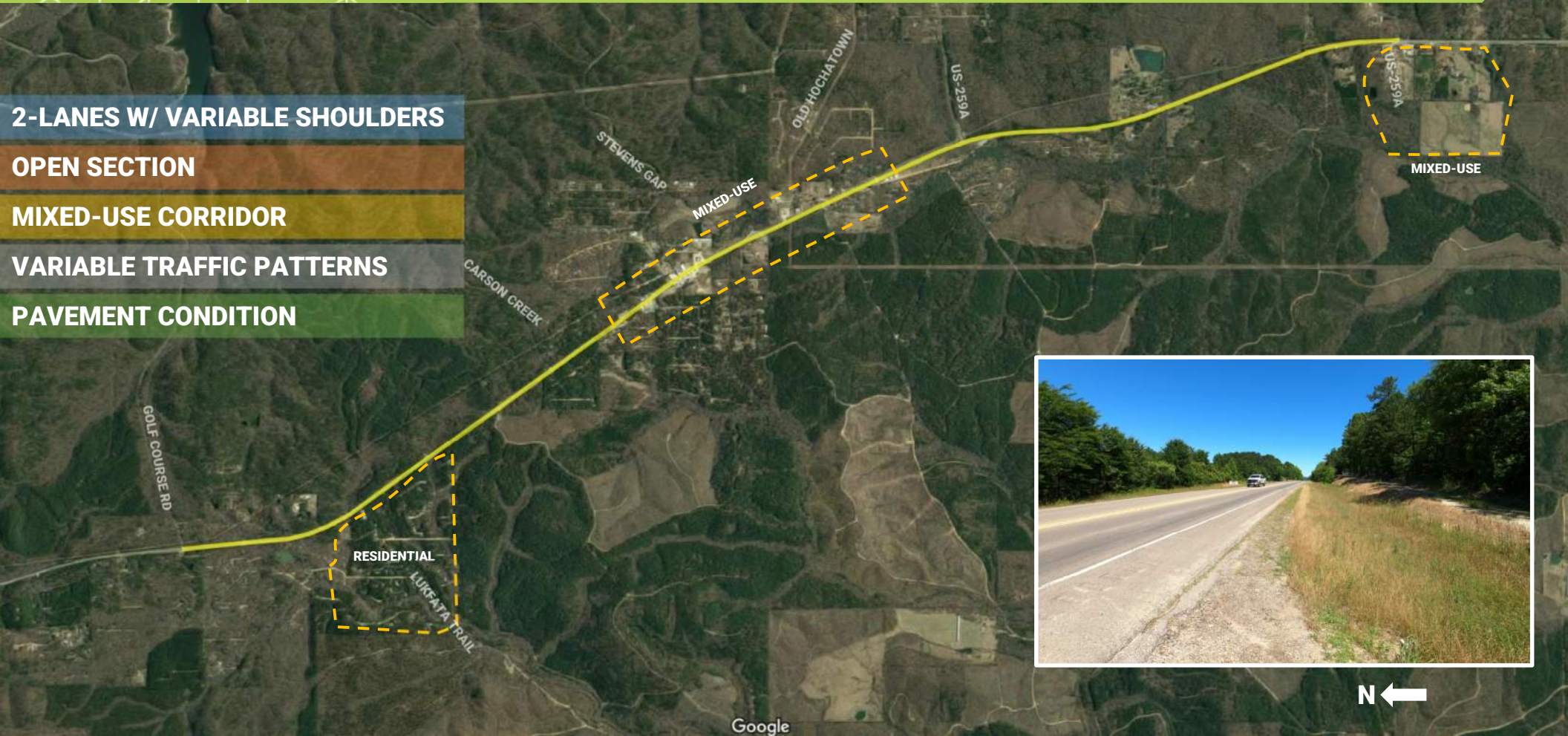
- REVIEW TRAFFIC STUDY
- PRELIMINARY ENGINEERING



# EXISTING CONDITIONS

US-259

- 2-LANES W/ VARIABLE SHOULDERS
- OPEN SECTION
- MIXED-USE CORRIDOR
- VARIABLE TRAFFIC PATTERNS
- PAVEMENT CONDITION



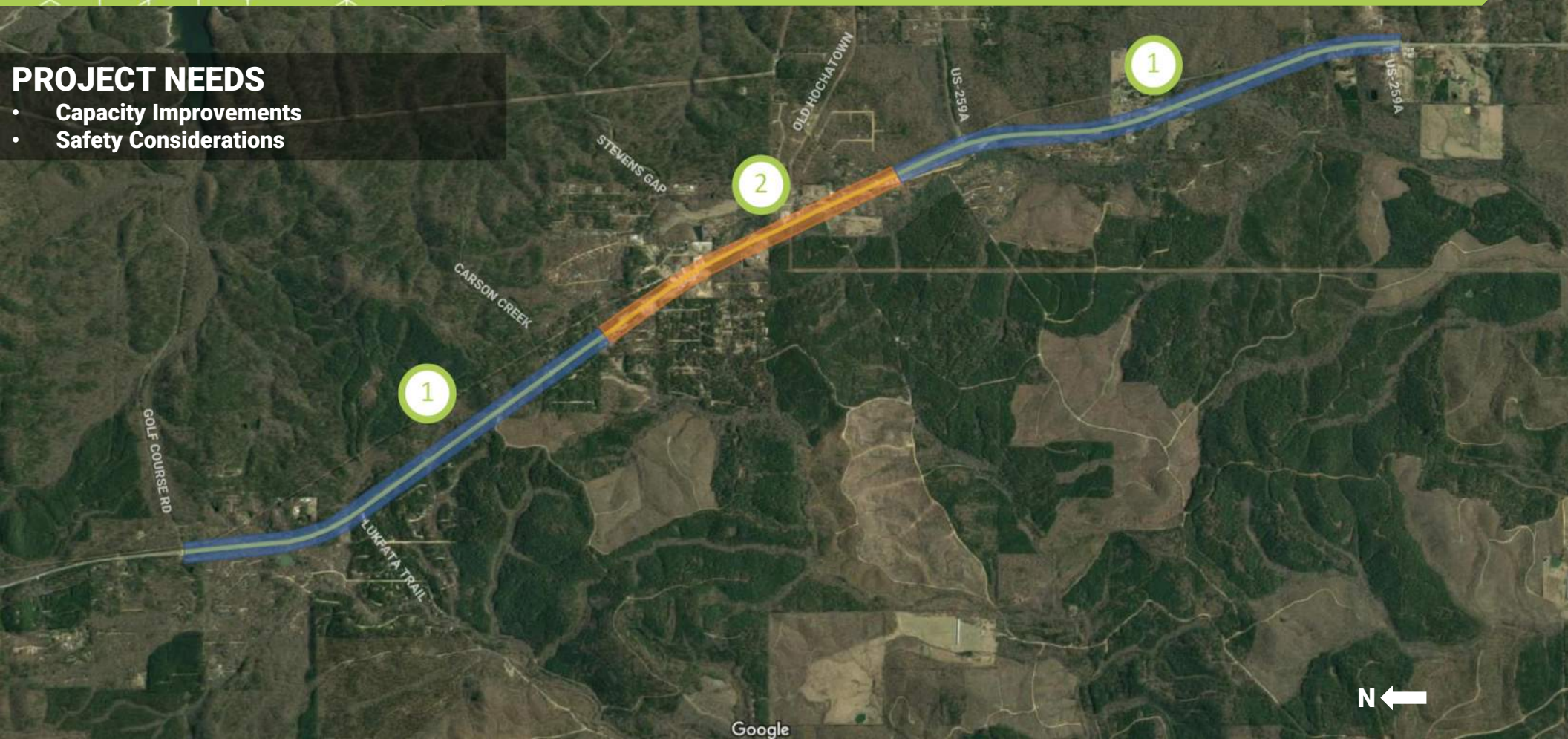
Google

# FUTURE EVALUATION

US-259

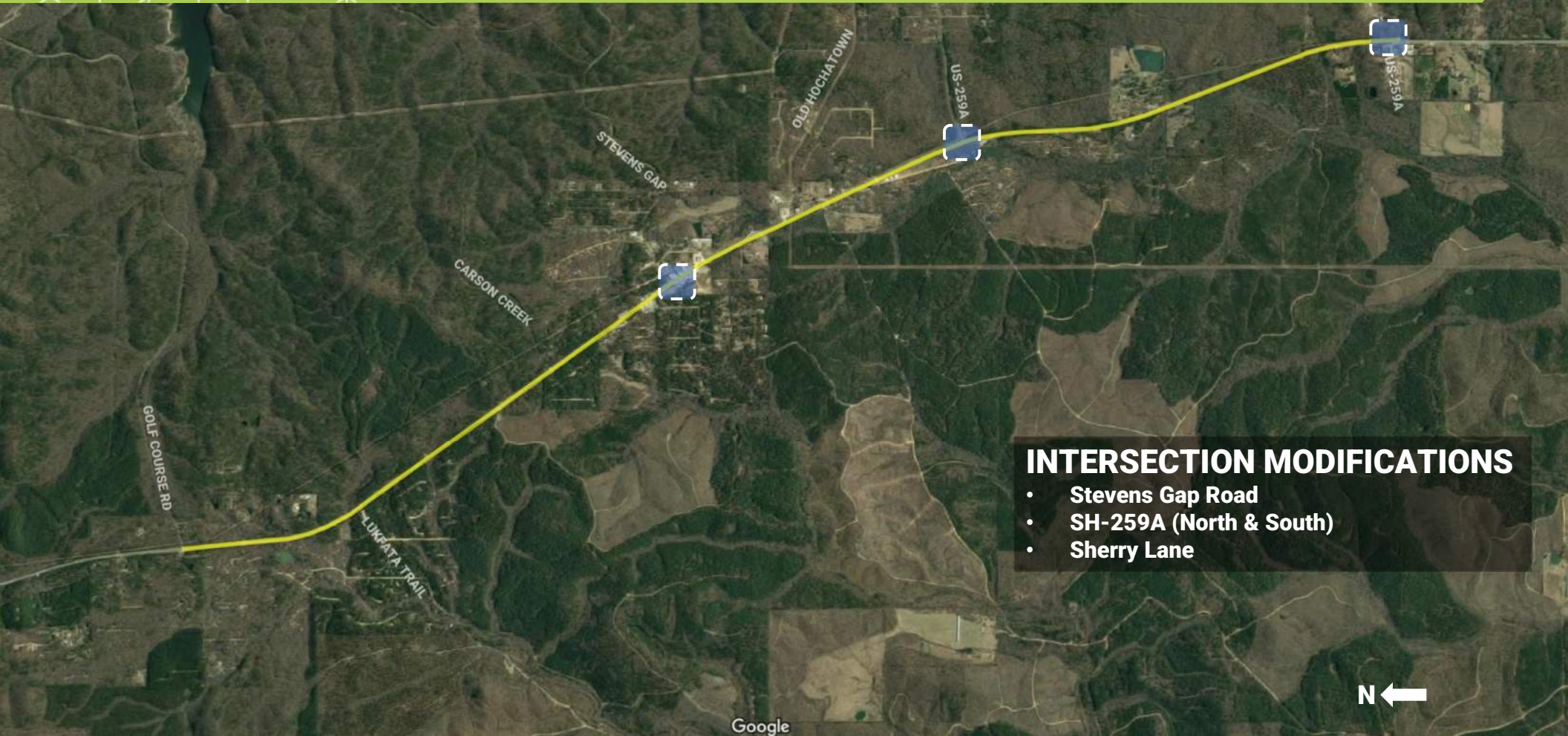
## PROJECT NEEDS

- Capacity Improvements
- Safety Considerations



# INTERIM IMPROVEMENTS

US-259

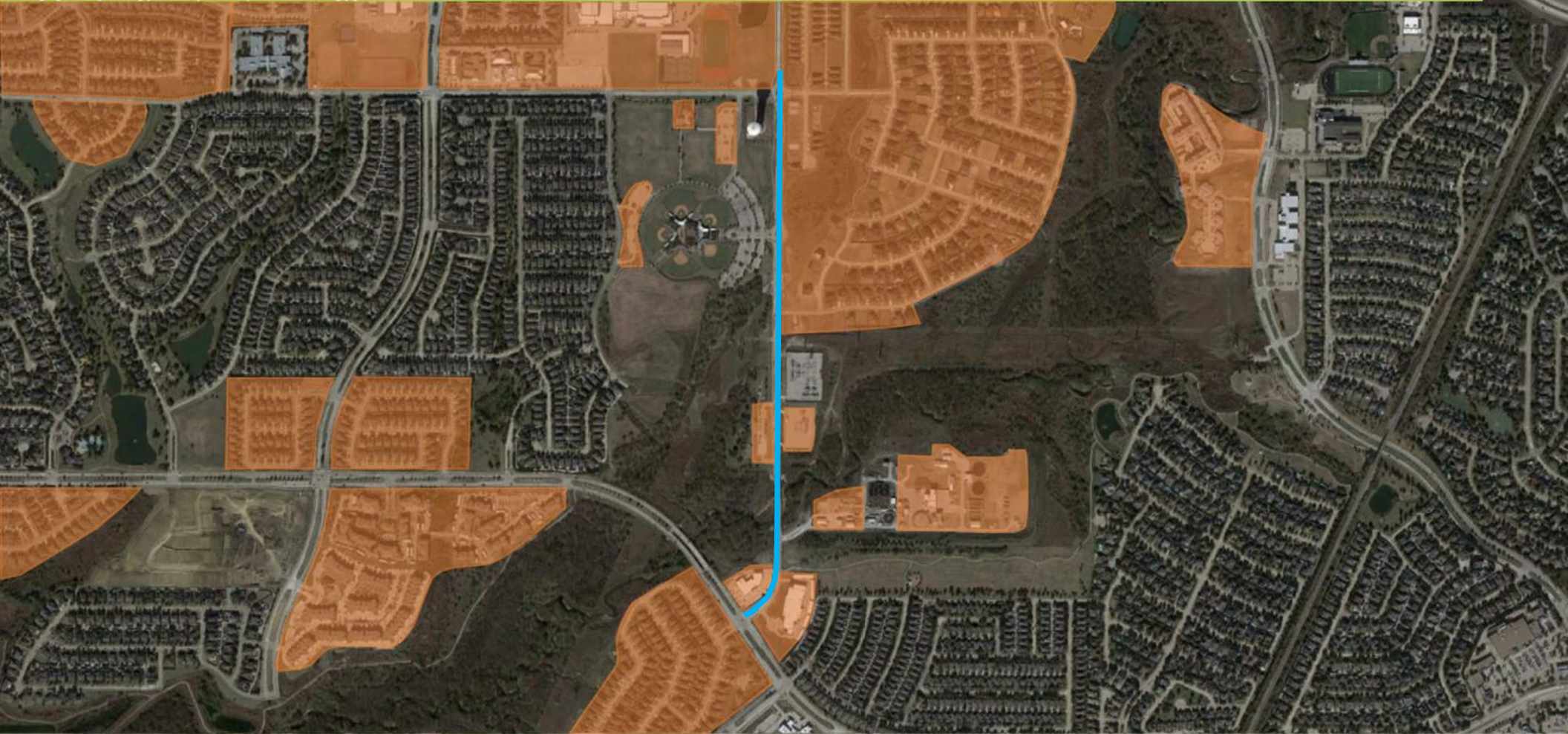


## INTERSECTION MODIFICATIONS

- Stevens Gap Road
- SH-259A (North & South)
- Sherry Lane

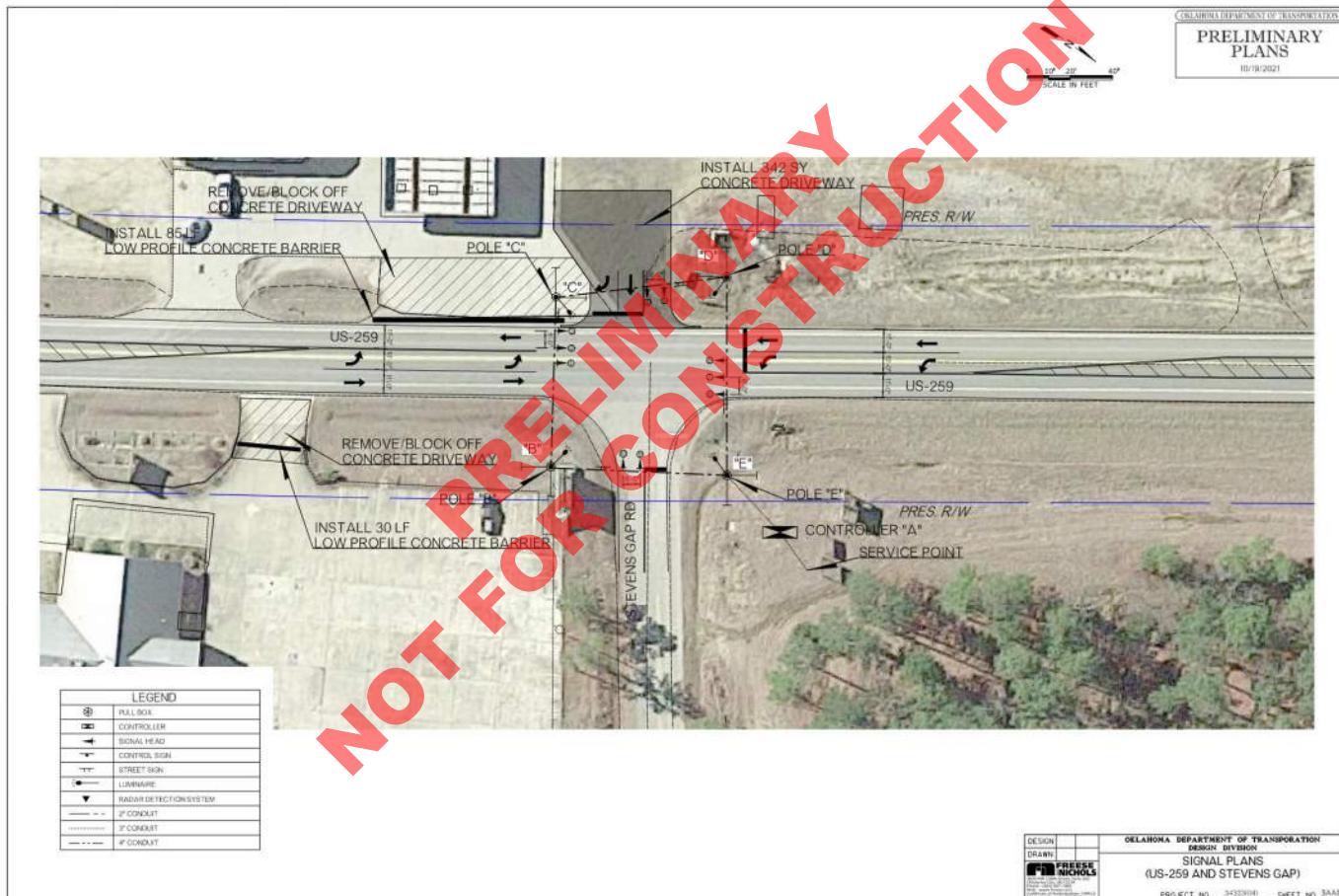
# PROJECT EXPERIENCE

FRISCO – 4<sup>TH</sup> ARMY DRIVE



# TEMP SIGNALS

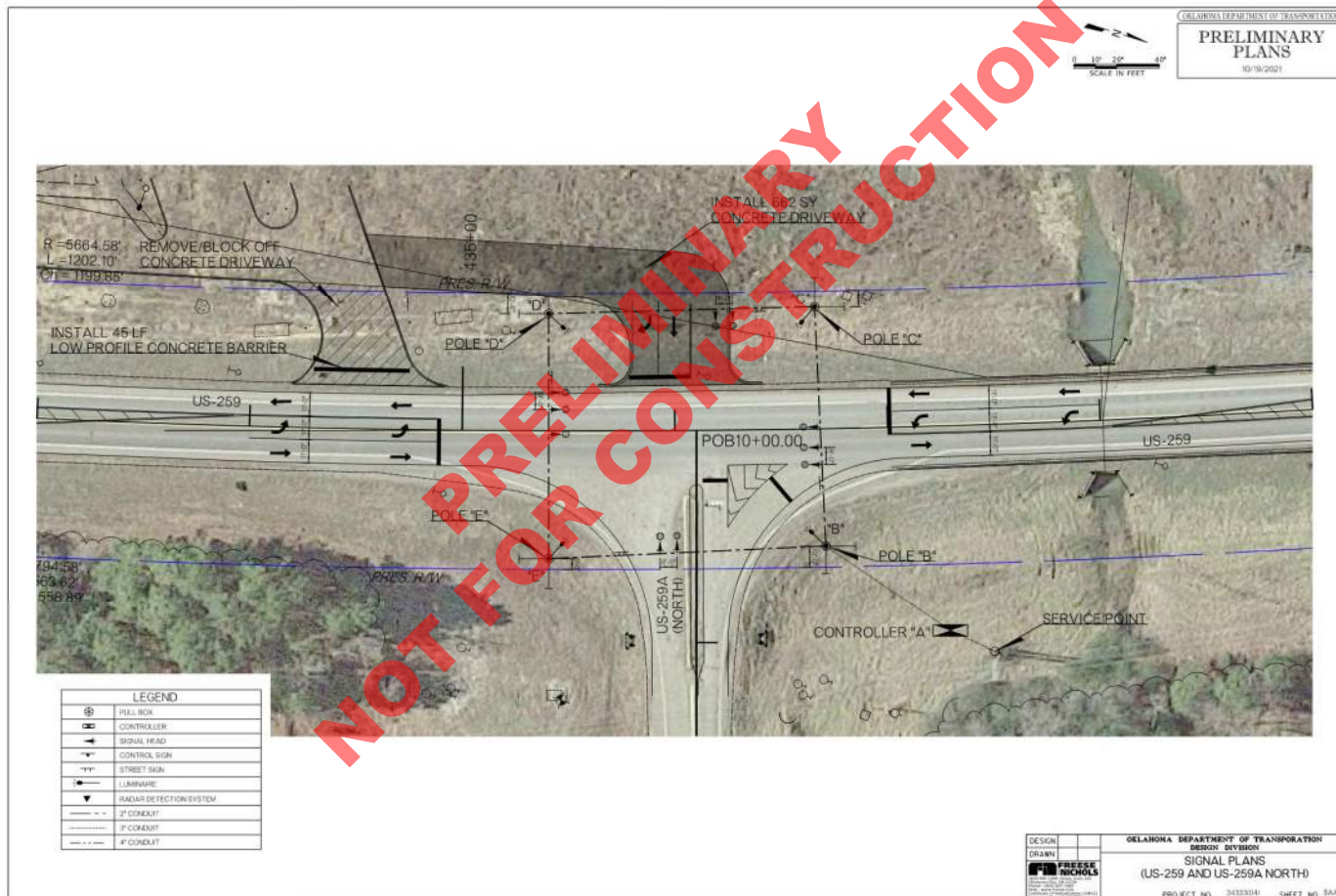
## US-259 – STEVENS GAP RD





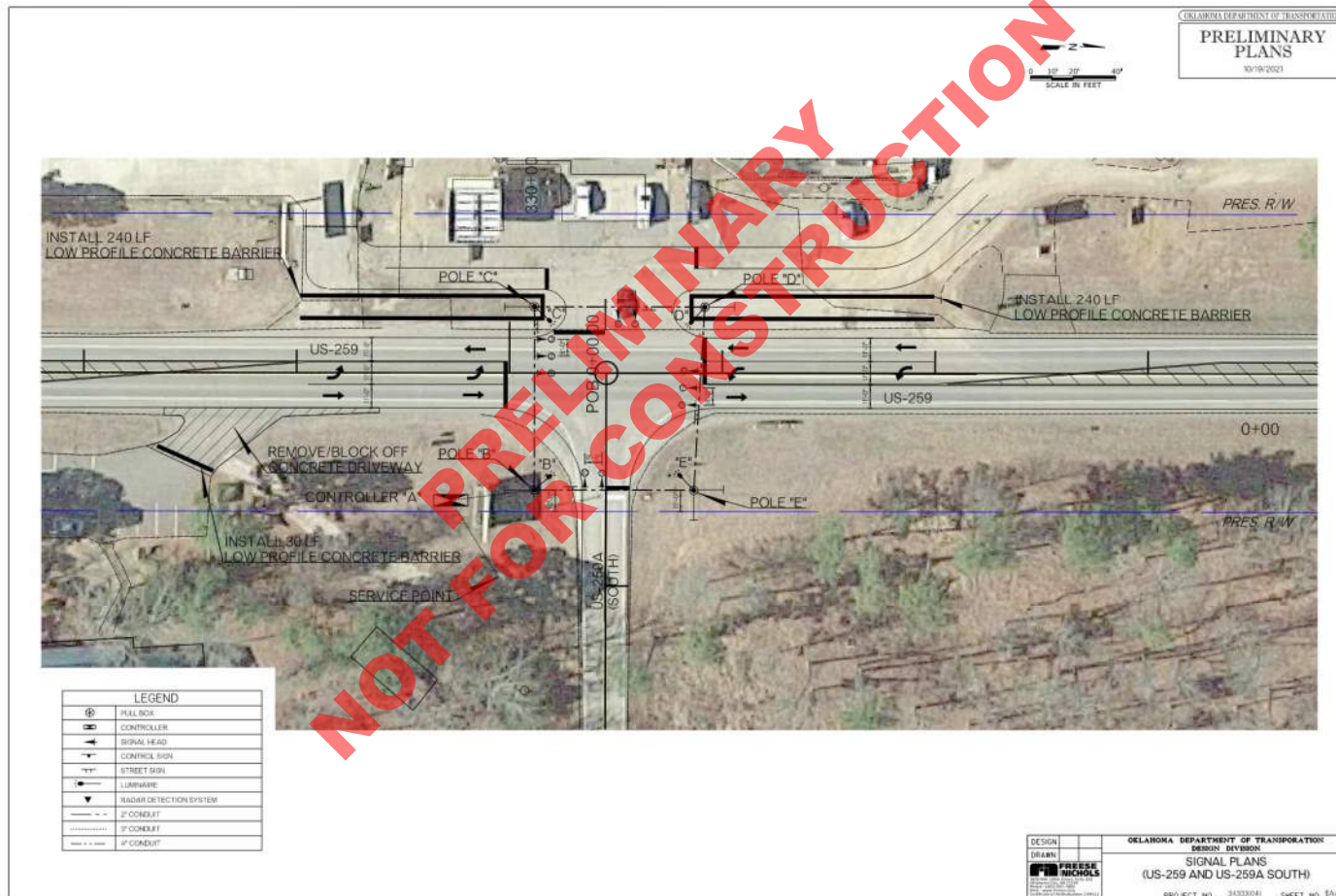
# TEMP SIGNALS

## US-259 – US-259A (NORTH)



# TEMP SIGNALS

## US-259 – US-259A (SOUTH)



# TEMP SIGNALS

## US-259 – SHERRY LANE

