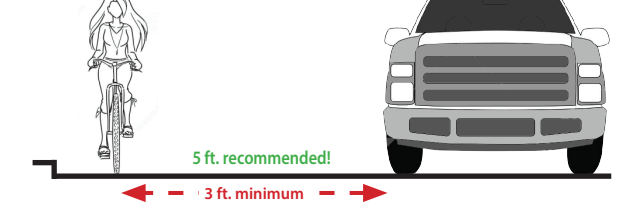


OKLAHOMA

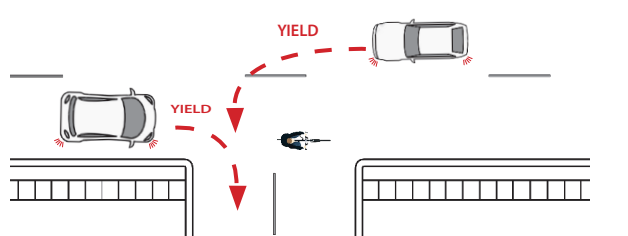
Bicycle Map 2020

Bicyclists Be a ROLL MODEL!

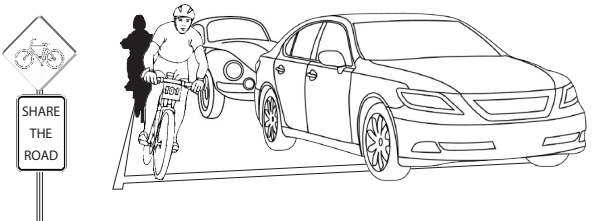
It's the law! Give bicycles at least 3 feet when you pass. When possible, give 5 feet of clearance. Slow down and don't pass until it's safe to do so.



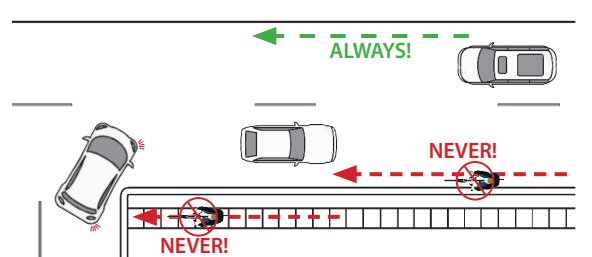
Be watchful at intersections. Cyclists may be traveling faster than you expect. Yield to bikes as you would any other moving vehicle.



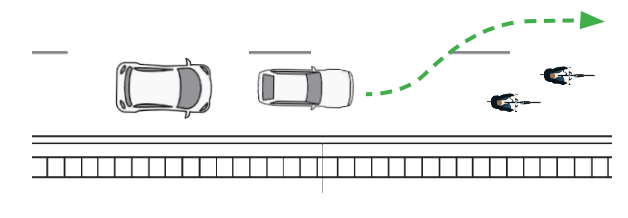
Show respect for all users of the road and you'll get respect back as a result. Cyclists and drivers: same roads, same rules, same rights and responsibilities.



Ride on the right with the flow of traffic. NEVER ride against traffic on the road, in a bike lane or on a sidewalk. Drivers turning from the side cannot see you approaching, and approaching drivers will not expect you to be riding the wrong way.



Be aware of bikes. Cyclists have the same legal rights to use the road as motorists. Cyclists can legally ride two abreast on the roadway as long as they do not unnecessarily slow traffic. In several circumstances, cyclists can use the entire travel lane.



Images courtesy of Pima County Communications (AZ)

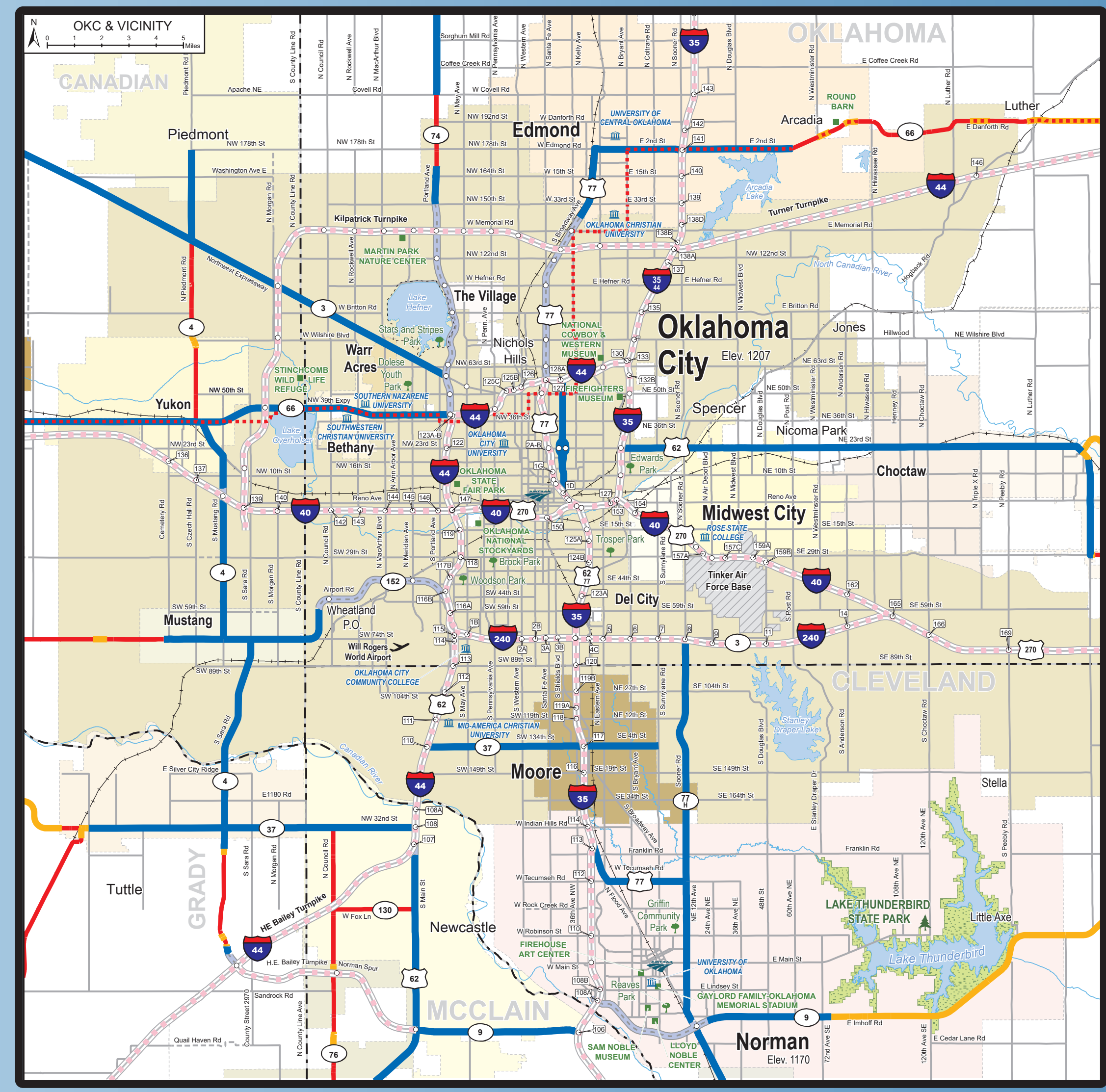
Local Bicycle Partners



bikewalkokc
moving toward a healthy future

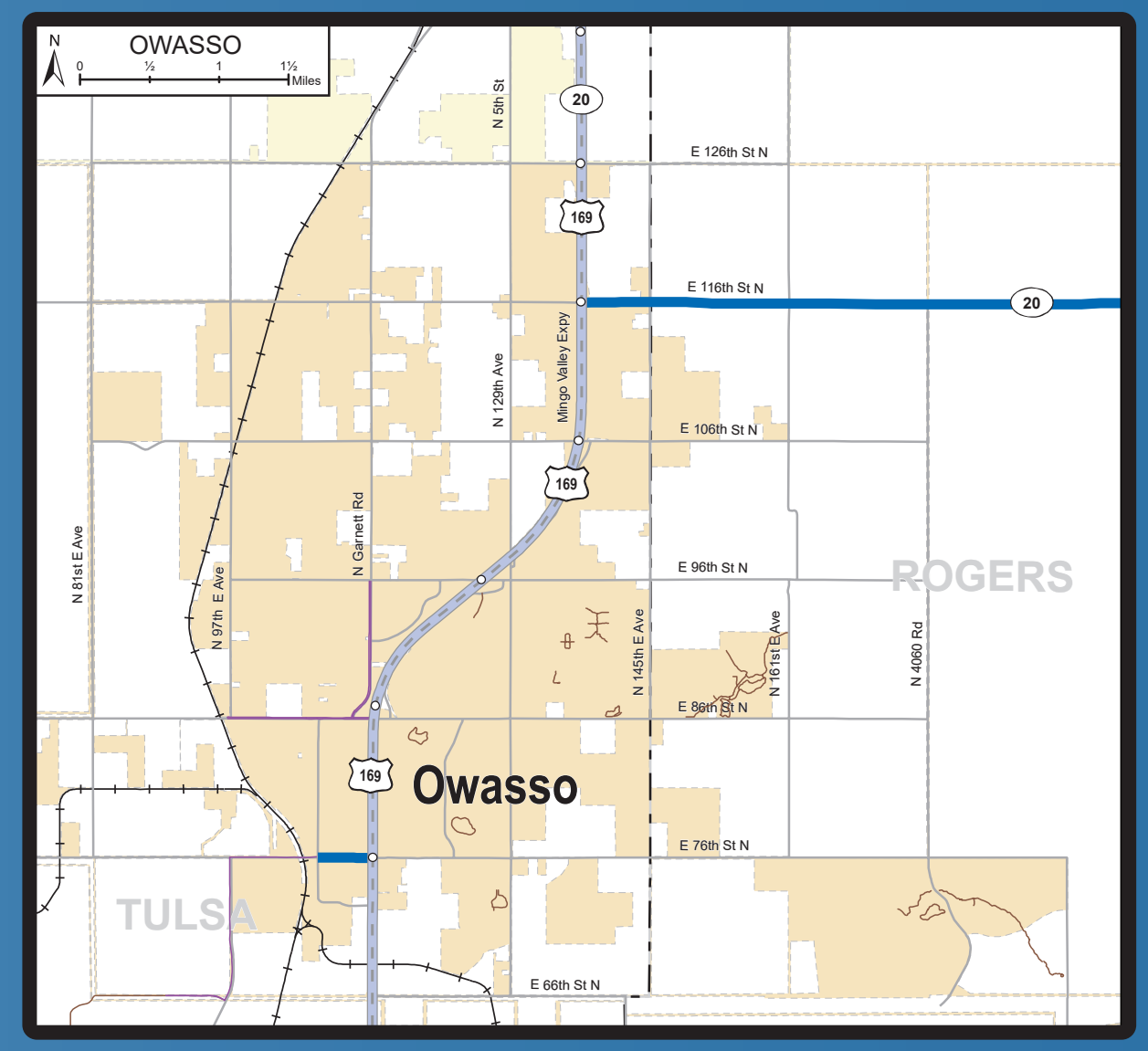
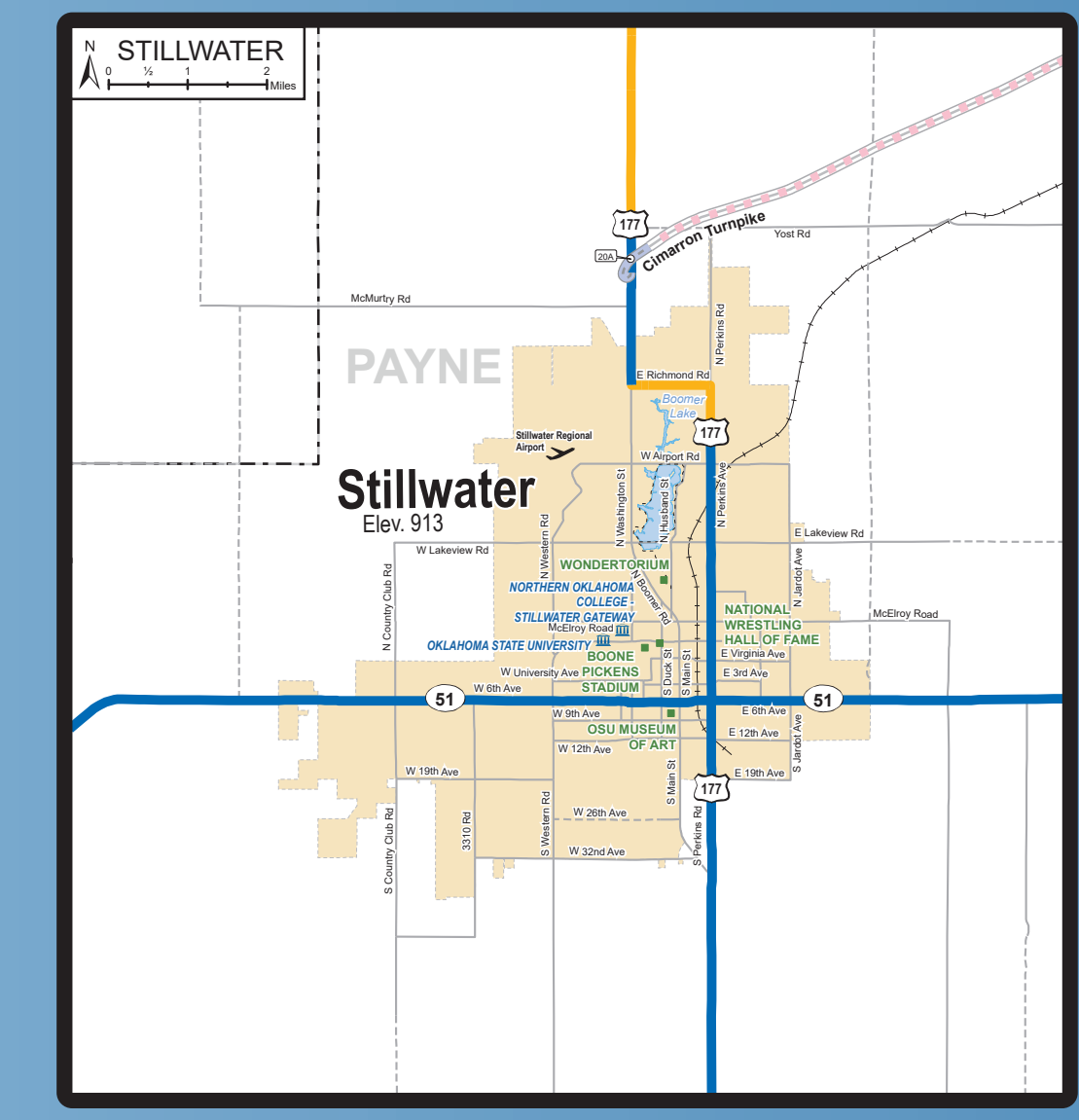
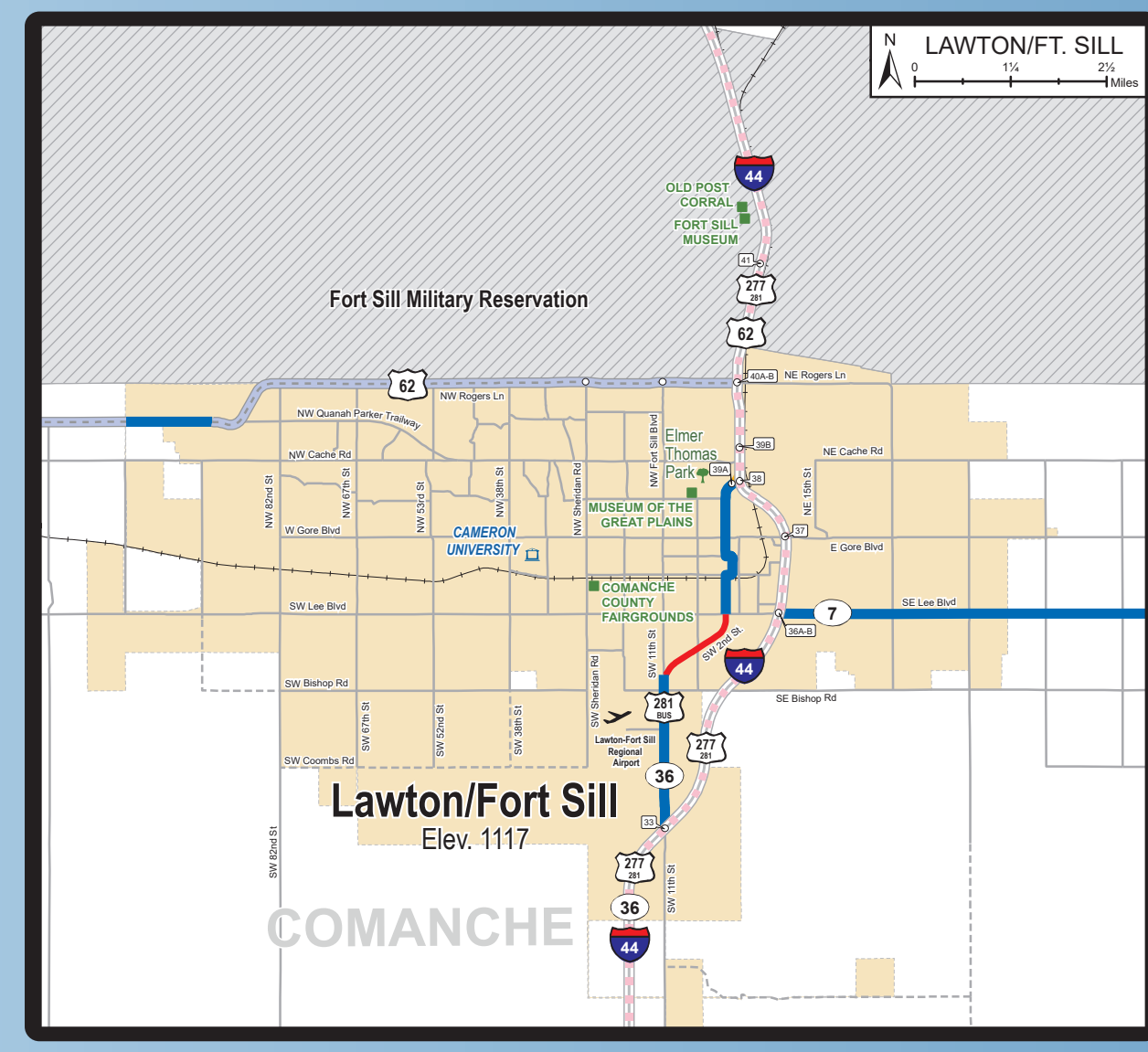


Bicycle/Pedestrian ADVISORY COMMITTEE



Map Legend

- Cities & Towns**
 - Corporate Limit (Population 5,000+)
- Parks & Institutions**
 - Oklahoma State Park Area
 - Restricted Military Area
 - College of University
 - Points of Interest
 - State Park Marker
 - City Park Marker
 - Scheduled Airline Airport
 - County Line
 - Railroad
- Bike Trails**
 - Historic Route 66 Bike Route
 - Lake Trail
 - Paved Trail
 - On-Street Route
- Roadways**
 - Interstates & Turnpike
 - Access Controlled Roadway
 - Other Multilane Highway
 - Two Lane Highway with Sufficient Shoulder (>4' Paved)
 - Two Lane Highway with Deficient Shoulder
 - Other Paved Roadway*
 - Other Unpaved Roadway*
 - Interchange
 - Safety Turnoff
 - Interstate Highway
 - U.S. Highway
 - State Highway
- Natural Features**
 - Lake
 - River
- Other Map Symbols**
 - Amtrak Station



"The mission of the Oklahoma Department of Transportation is to provide a safe, economical and effective transportation network for the people, commerce and communities of Oklahoma." ODOT website: www.odot.org

Road Condition & Traffic Information: www.okroads.org

ODOT Map & Data Portal: okdot.maps.arcgis.com

Indian Nations Council of Governments (INCOG): www.incog.org

Association of Central Oklahoma Governments (ACOG): www.acogok.org

Lawton Metropolitan Planning Organization (LMPO): www.lawtonmpo.org

BikeOklahoma: www.okbike.org

Main Line: 405-522-8000

Strategic Asset & Performance Management Division 405-521-6433

The information contained in this map does not constitute a legal standard. Refer to Oklahoma Revised Statutes and local traffic ordinances.