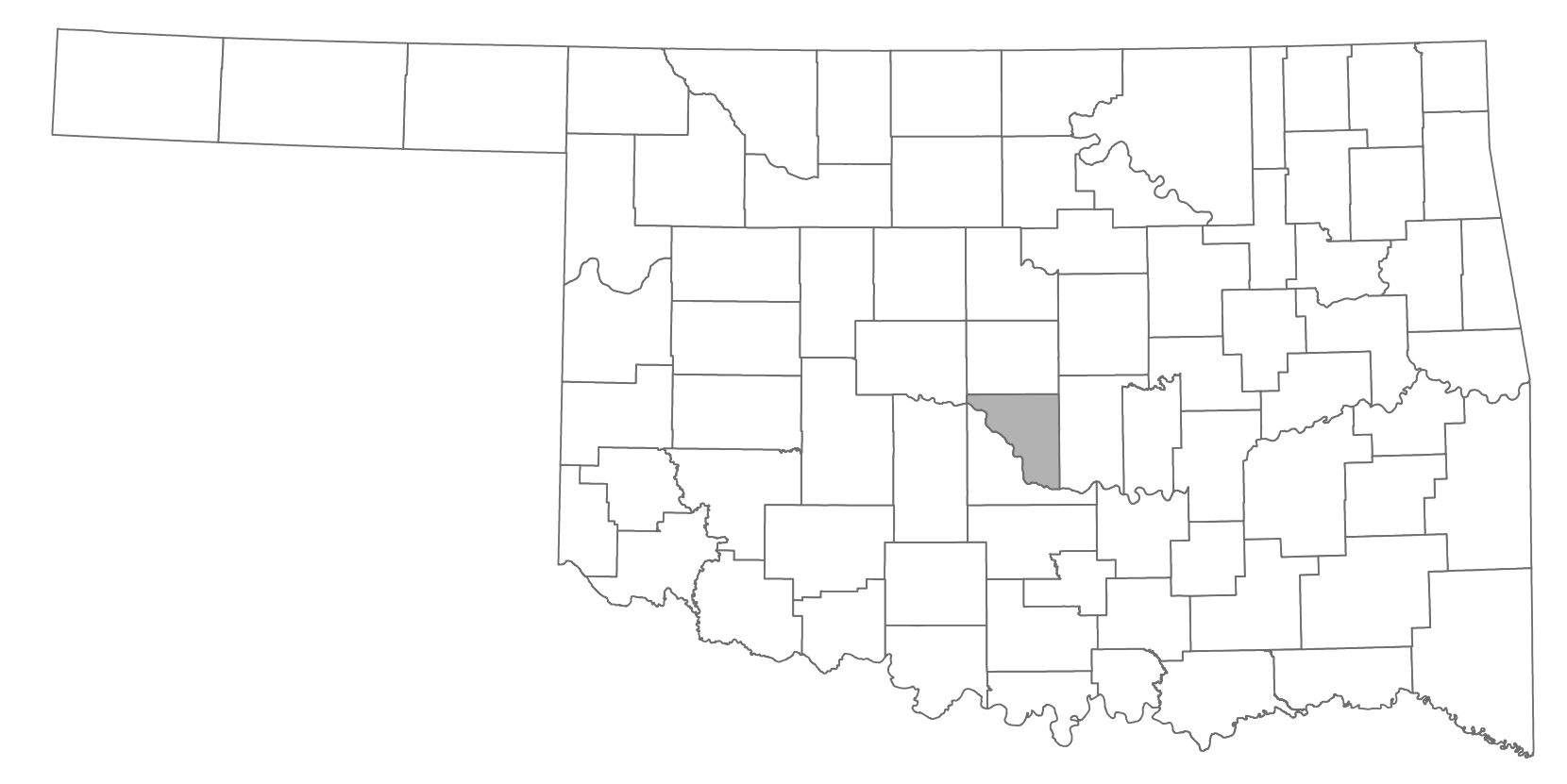
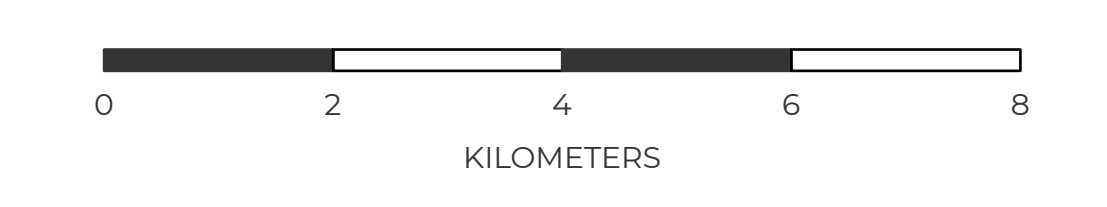
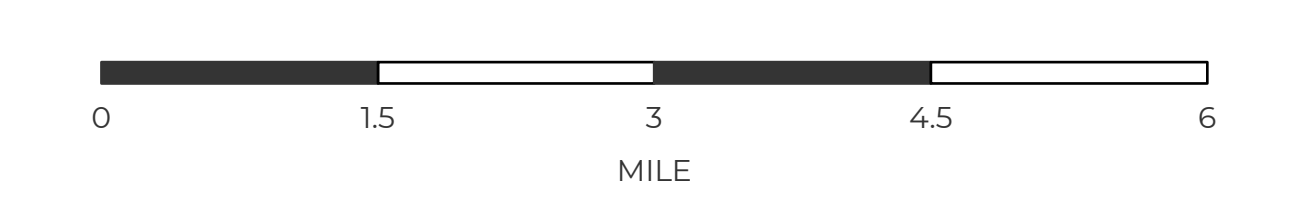
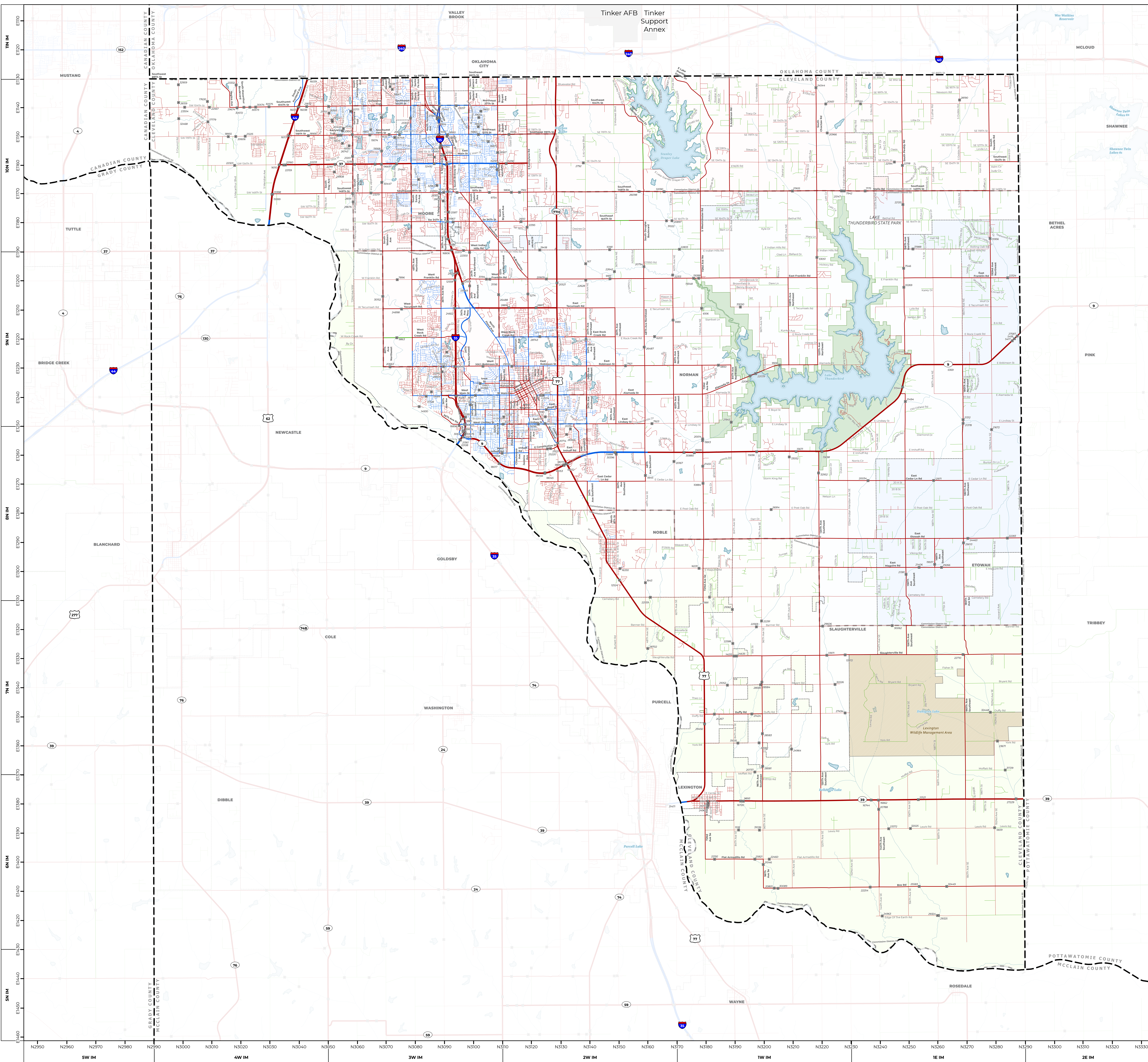


CLEVELAND

COUNTY

CENSUS YEAR 2020 POPULATION: 295,528

- INTERSTATE
- U.S. HIGHWAY
- STATE HIGHWAY
- HIGHWAY
- COLLECTOR
- LOCAL ROAD
- ASPHALT
- CONCRETE
- BRICK
- UNPAVED
- BRIDGE
- STREAM
- LAKE
- WILDLIFE REFUGE AREA
- WILDLIFE MANAGEMENT AREA
- STATE PARK
- US MILITARY INSTALLATION
- CITY LIMIT
- COUNTY COMMISSIONER DISTRICT
- COUNTY LINE



THIS MAP INDICATES THOSE ROADS KNOWN TO THE DEPARTMENT TO BE OPEN TO PUBLIC TRAVEL. PLACEMENT OF A ROAD ON THE MAP HAS NO RELATIONSHIP TO MAINTENANCE RESPONSIBILITY BY ANY LEVEL OF GOVERNMENT.

COPIES OF THIS MAP ARE AVAILABLE FOR PUBLIC USE AT NOMINAL COST.

ADDRESS:
OKLAHOMA DEPARTMENT OF TRANSPORTATION
PRINTING SERVICES
200 NE 21ST STREET
OKLAHOMA CITY, OKLAHOMA 73105-3204
PHONE: (405) 521-2666

ALL RIGHTS RESERVED - COMPUTER GENERATED
APRIL 2, 2024

