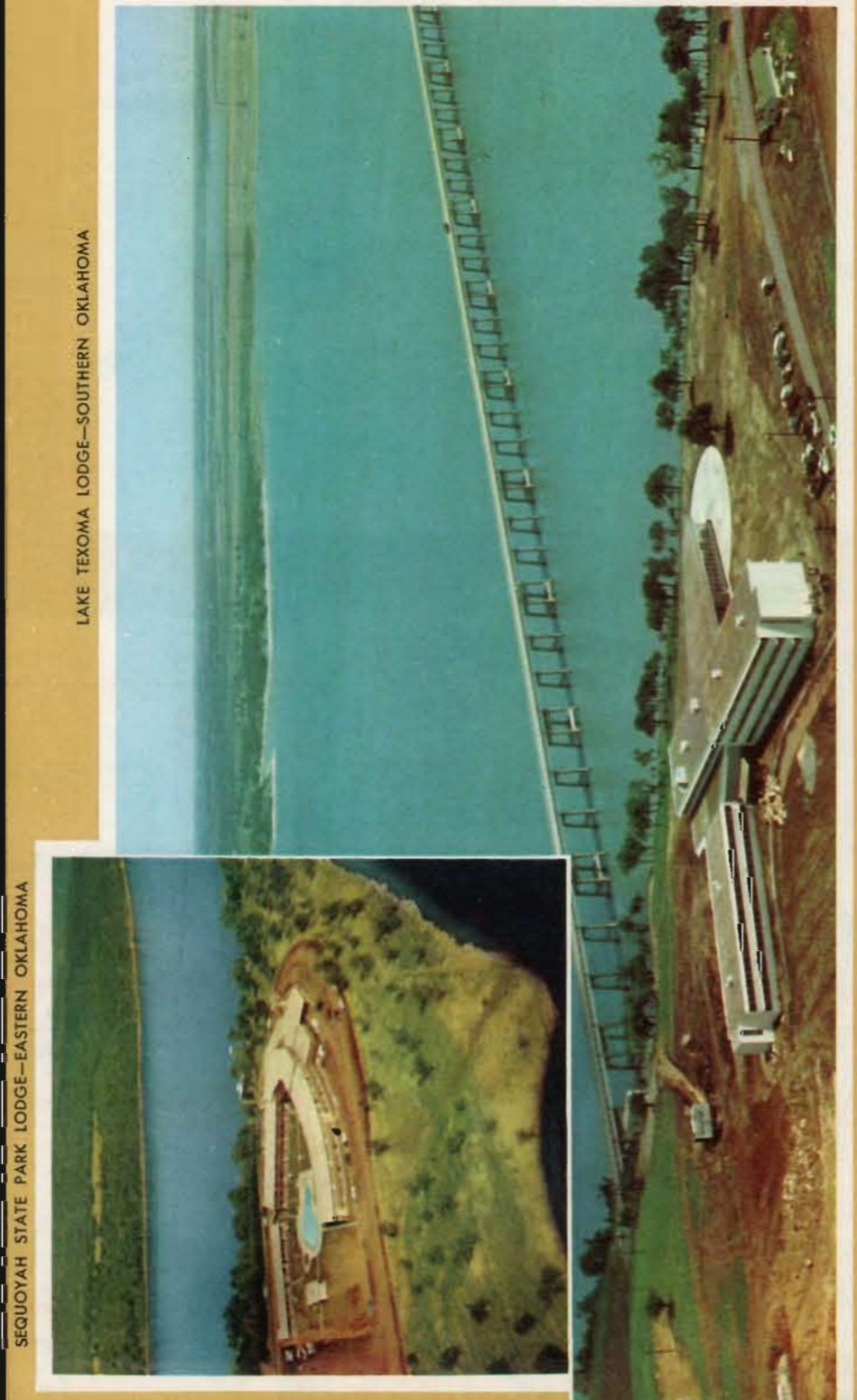


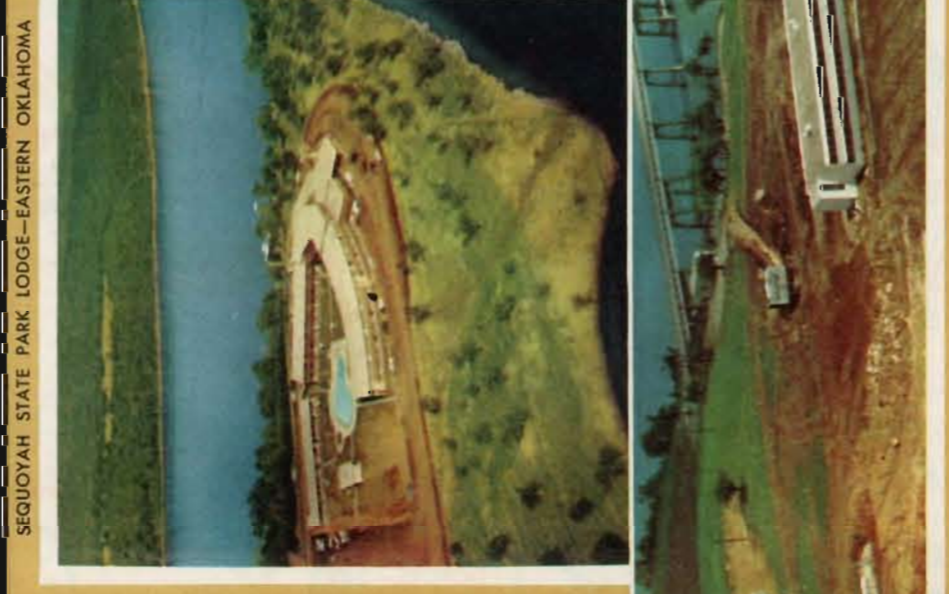
The strength of conviction and the far-sightedness displayed by the hardy pioneers who settled Oklahoma 50 years ago, is upheld today by the vigorous growing industries, cities, modern highways, beautiful farm lands and parks. From Tapes to Towers truly typifies the progressive state of Oklahoma in its Golden Anniversary Year.

CELEBRATING OKLAHOMA'S 50TH ANNIVERSARY...

OKLAHOMA



LAKE TEXOMA LODGE—SOUTHERN OKLAHOMA



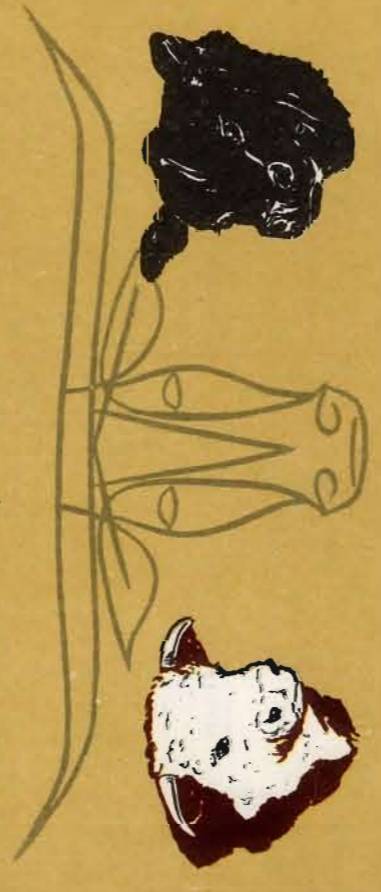
SEQUOYAH STATE PARK LODGE—EASTERN OKLAHOMA



NATIONS NUMBER ONE FOOTBALL TEAM—OKLAHOMA UNIVERSITY, NORMAN, OKLA.

RICH IN AGRICULTURE AND INDUSTRY

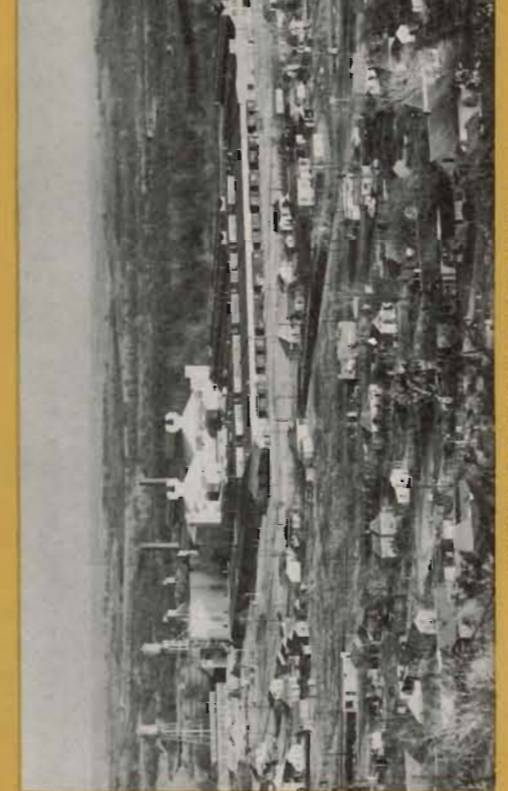
Noted for her vast wheat and farm lands, the fine herds of cattle on her plains, growing industries in a growing state rich in Oil and Gas resources—Oklahoma is today looked upon as a state where opportunity abounds.



A TYPICAL SCENE OF OKLAHOMA'S FINE CATTLE



OKLAHOMA IS PROUD OF ITS WHEAT AND AGRICULTURE



INDUSTRY IS GROWING IN OKLAHOMA

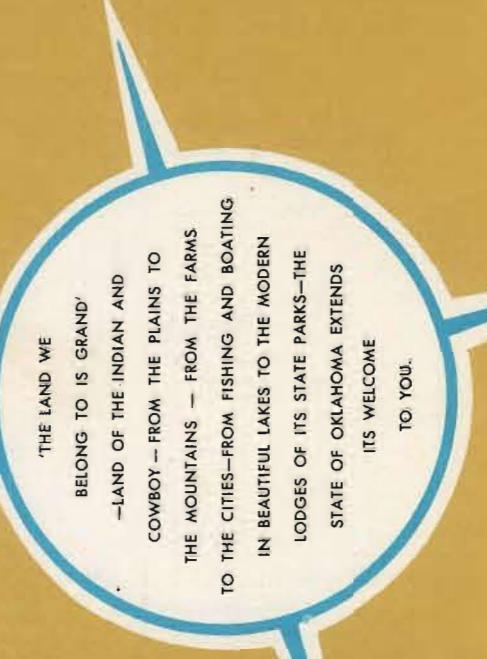


OIL IN OKLAHOMA IS ONE OF OUR LARGEST INDUSTRIES



STATE CAPITAL BUILDING—OKLAHOMA CITY

DRIVE SAFELY WITH PLEASURE THROUGH OKLAHOMA



THE LAND WE BELONG TO IS GRAND! —LAND OF THE INDIAN AND COWBOY— FROM THE PLAINS TO THE MOUNTAINS — FROM THE FARMS TO THE CITIES—FROM FISHING AND BOATING IN BEAUTIFUL LAKES TO THE MODERN LODGES OF ITS STATE PARKS—THE STATE OF OKLAHOMA EXTENDS ITS WELCOME TO YOU!

TRAFFIC SIGNS

DAY	65
NIGHT	55
TRUCKS	50
TRUCKS	40

DO NOT CROSS YELLOW LINE

SCHOOL 25 MPH

DIAMOND — WARNS OF HAZARDS IN OR ADJACENT TO THE ROADWAY.



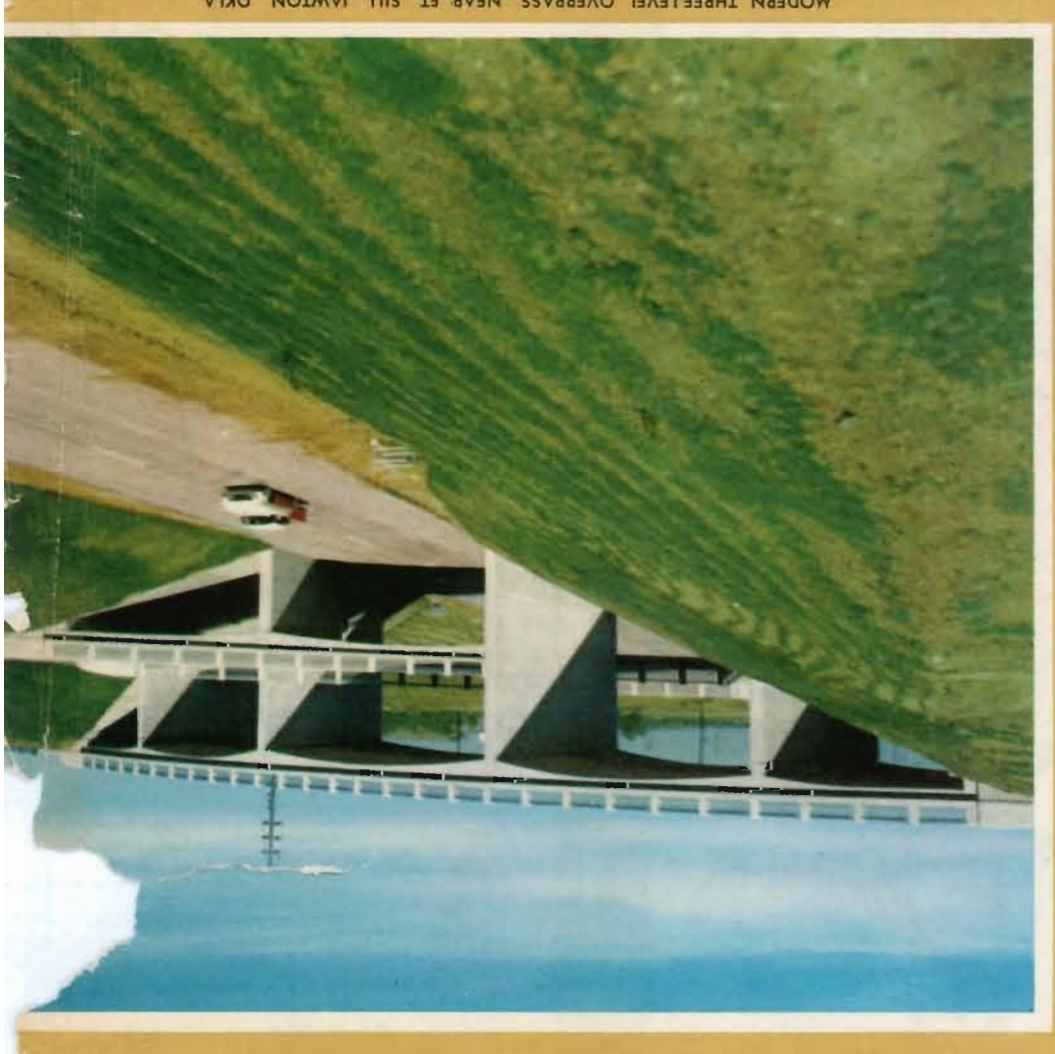
OCTAGON — USED EXCLUSIVELY FOR STOP SIGNS.



RECTANGLE — REGULATORY AND INFORMATIONAL.



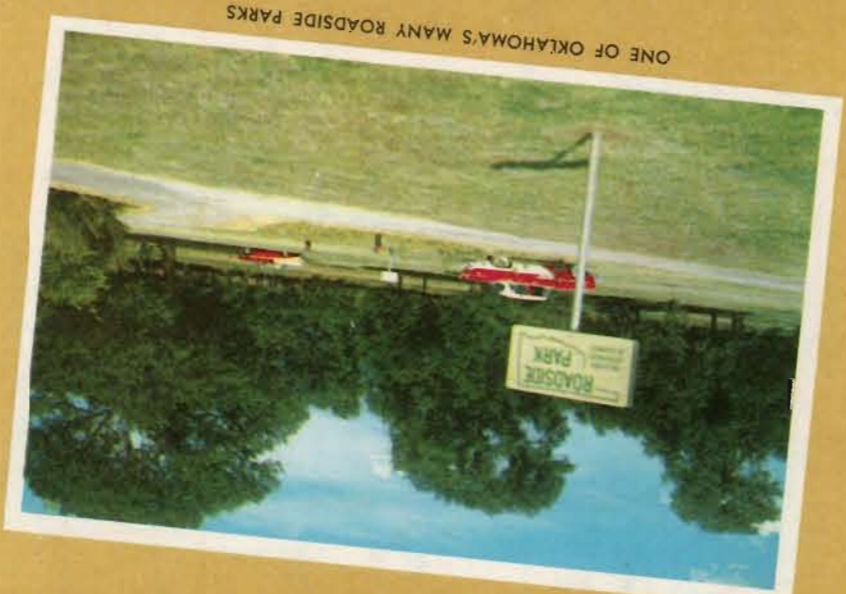
ROUND SHAPE — ALWAYS GIVES PRIORITY TO RAILROAD CROSSING AHEAD.



MODERN THREE-LEVEL OVERPASS, NEAR FT. SILL, LAWTON, OKLA.



U.S. 271 IN BEAUTIFUL EASTERN OKLAHOMA



ONE OF OKLAHOMA'S MANY ROADSIDE PARKS



BRIDGE CONSTRUCTION ON U.S. 66, ROGERS COUNTY



ONE OF OKLAHOMA'S EIGHT HIGHWAY DIVISION OFFICES



STATE HIGHWAY NO. 10, CHEROKEE COUNTY, ALONG THE SCENIC ILLINOIS RIVER



OKLAHOMA IS PROUD OF ITS INDIANS AND TENNESSEES



LOOKING FORWARD TO MODERN TOWERS AND A BRIGHT FUTURE



STATE OF OKLAHOMA
OFFICE OF THE GOVERNOR
OKLAHOMA CITY
JULY 31, 1956

"Welcome to Oklahoma"—Big-shoulder are underway here. In 1957 Oklahoma will have achieved its 50th year of statehood. To mark this occasion of 50 years of statehood, the State Highway Commission has initiated a program and project aimed at the opportunity of showing the world how beautiful Oklahoma can appear. The Big-shoulder are underway and the Big-shoulder are underway to modern highways and recreational facilities.

The new law has the care of Oklahoma for recreation. Its scenic and historic objects at the heart of the Big-shoulder. The scenic and historic objects at the heart of the Big-shoulder. The scenic and historic objects at the heart of the Big-shoulder.

It is centrally located in a Big-shoulder. Its scenic and historic objects at the heart of the Big-shoulder. Its scenic and historic objects at the heart of the Big-shoulder.

Whether you are looking for a broader field for business expansion or for a Big-shoulder. Whether you are looking for a broader field for business expansion or for a Big-shoulder.

James B. Hargis
Governor

- STATE HIGHWAY COMMISSION**
- H. TOM KIRBY, Jr., Chairman
 - S. M. WILCOXSON, Vice-Chairman
 - A. B. GREEN, Secretary
 - ROBERT BARR, Member
 - C. A. STOLDT—Director
 - PAUL V. CARLIE, Member
 - JULIUS W. COX, Member
 - J. L. GOINS, Member
 - L. M. TITTLE, Member
 - G. H. BITTLE—Chief Engineer

GOLDEN ANNIVERSARY 1957



OFFICIAL STATE HIGHWAY MAP
Free Distribution