



1961

OKLAHOMA

OKLAHOMA Welcomes YOU.



Oklahoma is in the midst of its biggest highway program in history, making it easier to visit the many attractions of our state. And there are more things to see than ever before . . . new lakes, new lodges and new parks.

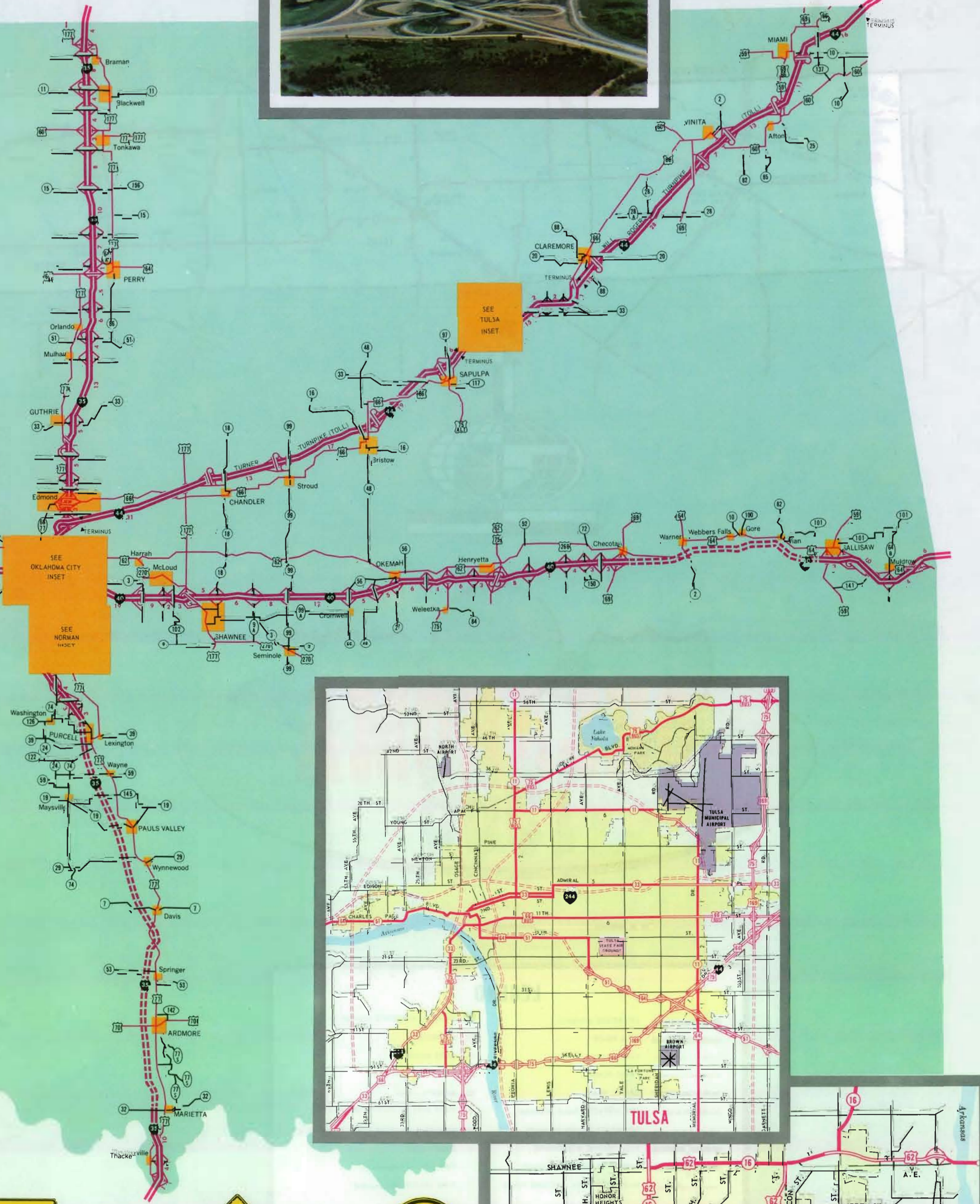
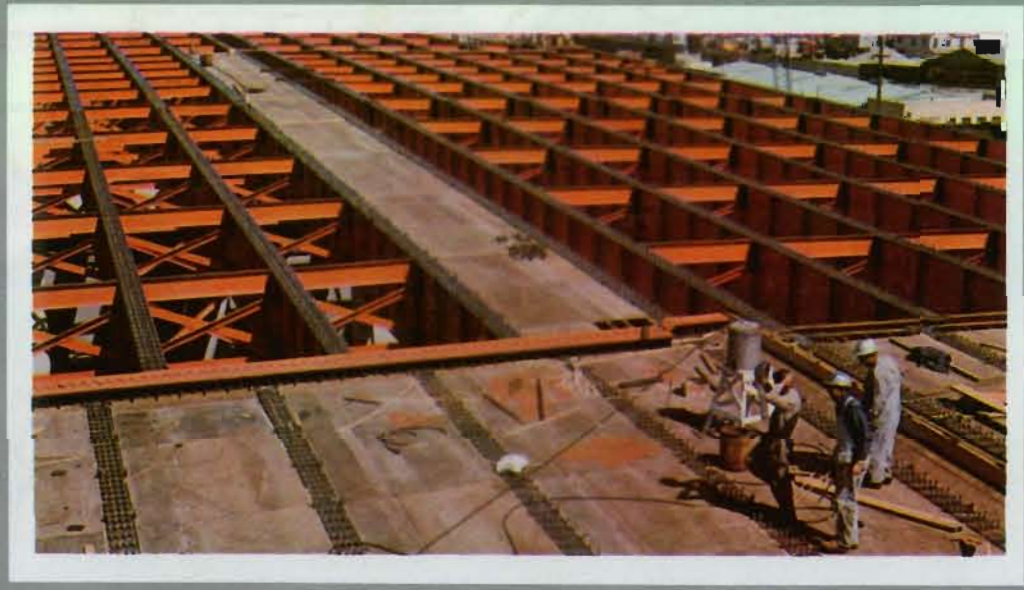
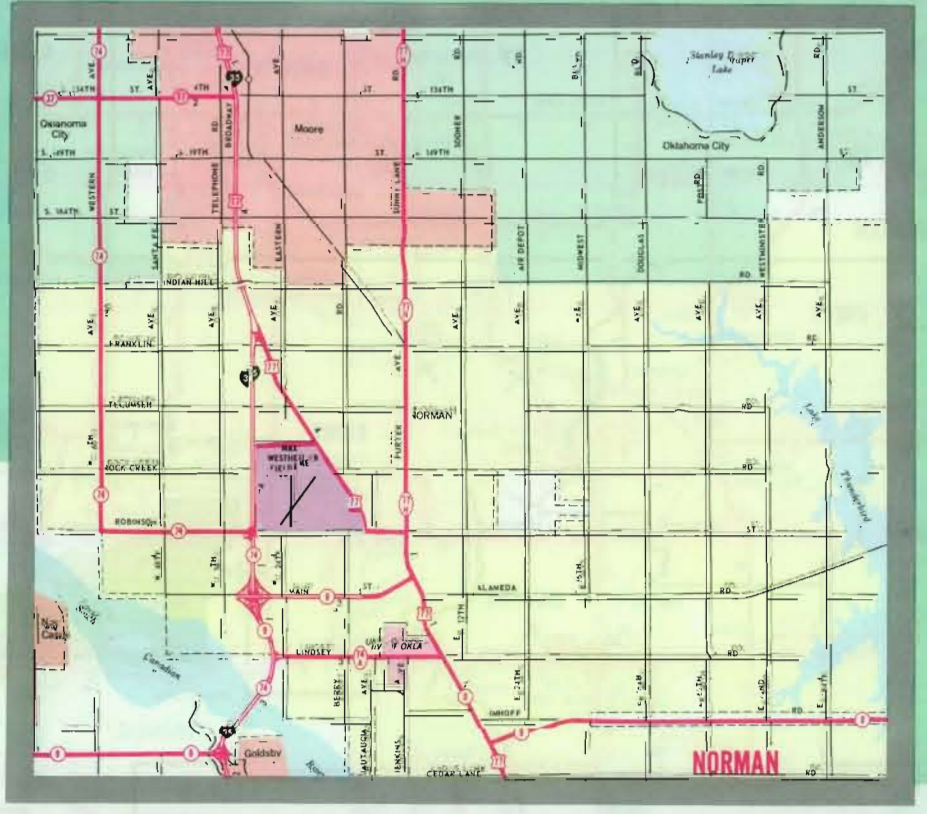
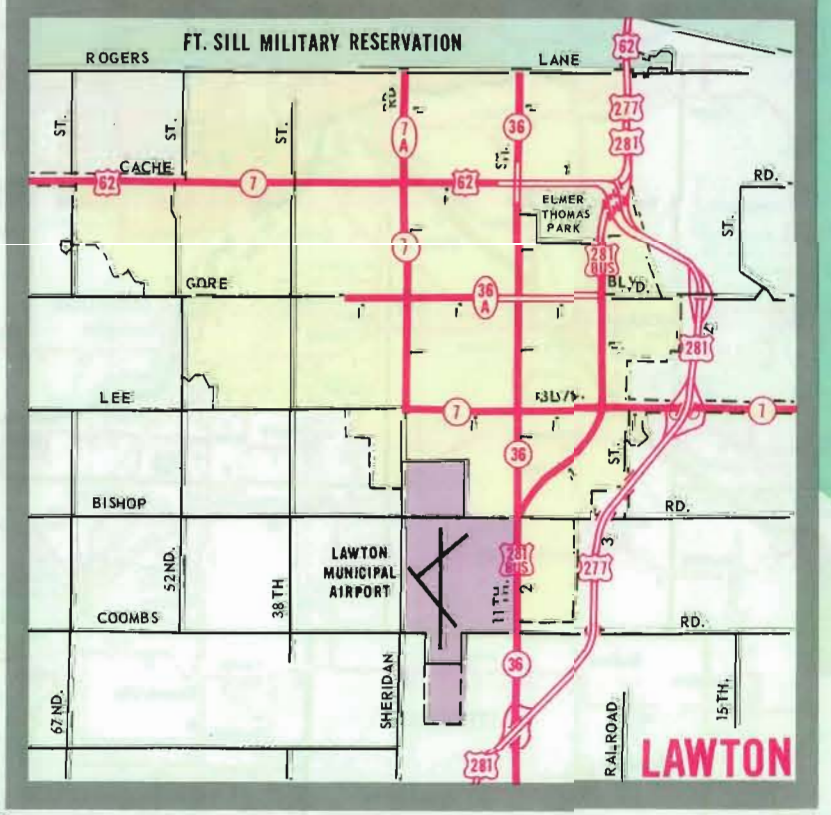
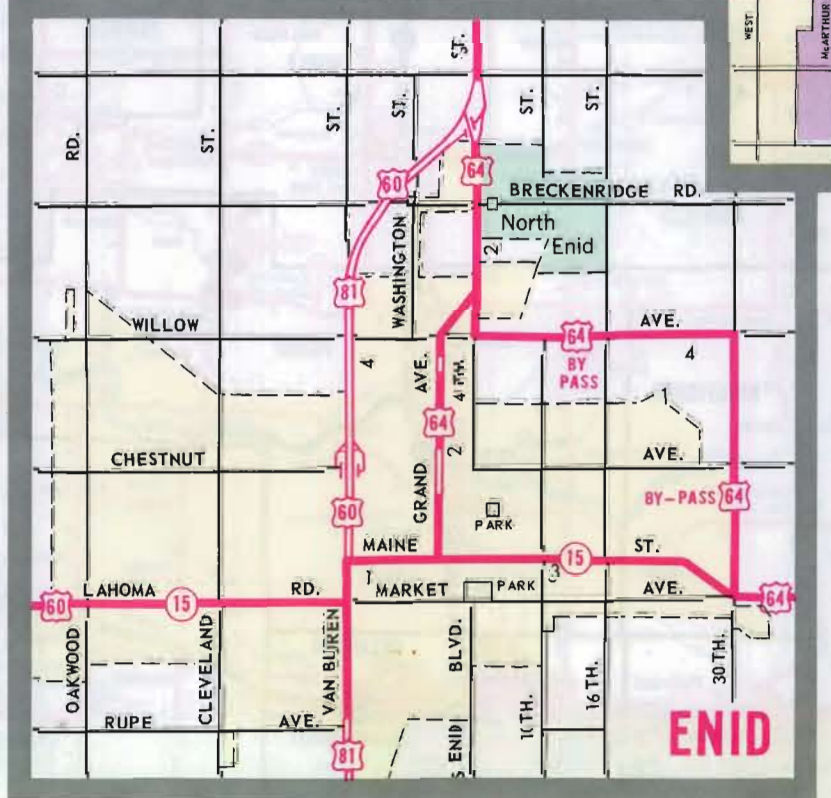
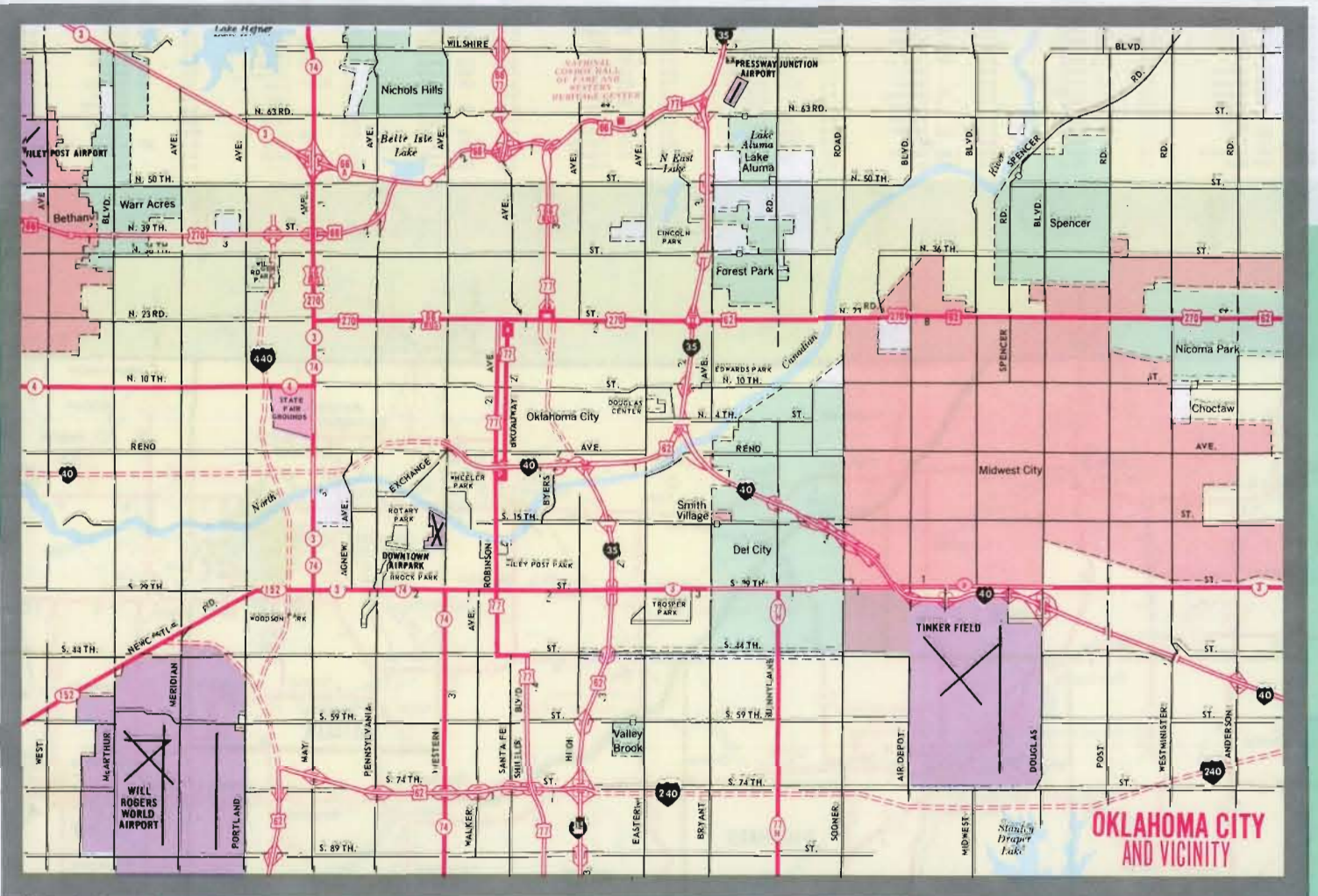
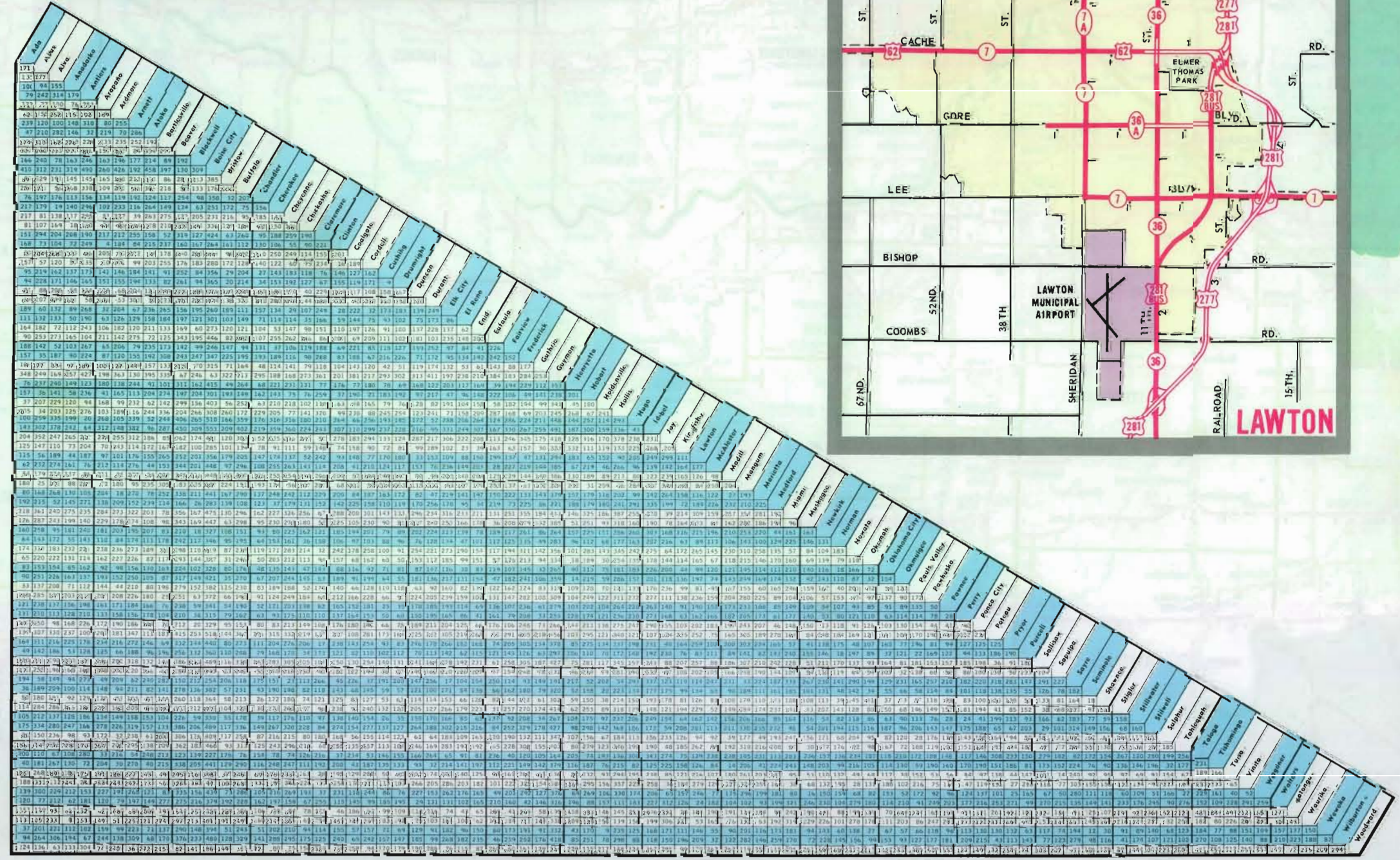
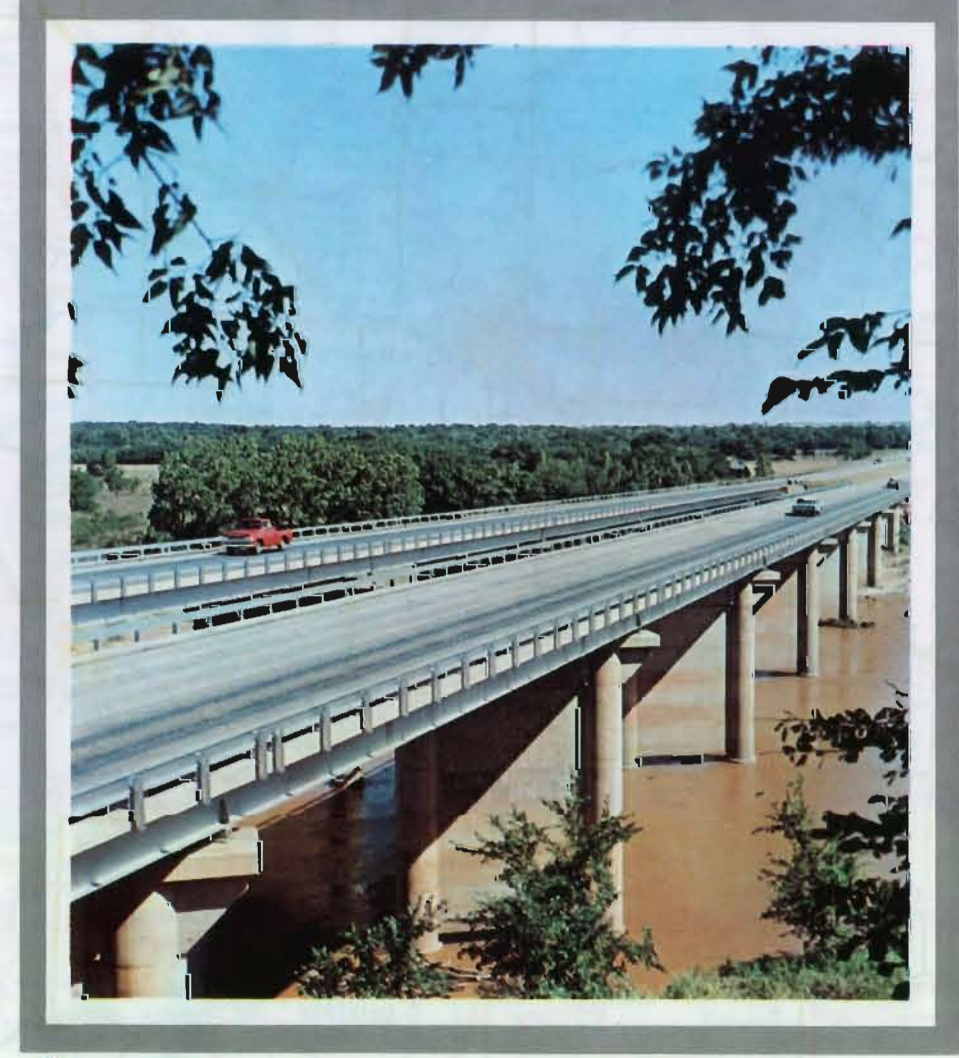
Citizens of this state are also hard at work on a program to keep Oklahoma beautiful.

We hope you will have a pleasant, safe visit to Oklahoma.

Henry Bellmon
Henry Bellmon
GOVERNOR

- STATE HIGHWAY COMMISSION
- HENRY BELLMON GOVERNOR
 - MARTIN GARNER CHAIRMAN
 - G. HUBERT GRASS VICE CHAIRMAN
 - VIRGIL JUMPER SECRETARY
 - COOPER WEST MEMBER
 - TRUMAN BRANSCUM MEMBER
 - J. NAT IRISH MEMBER
 - J. HARPER THOMAS MEMBER
 - ROBERT S. NEWHOUSE MEMBER

OFFICIAL OKLAHOMA STATE HIGHWAY MAP FOR FREE DISTRIBUTION



SPEED LIMITS
UNLESS OTHERWISE POSTED

DAY	65
NIGHT	55
TRUCKS	50



"HELP KEEP OKLAHOMA BEAUTIFUL"