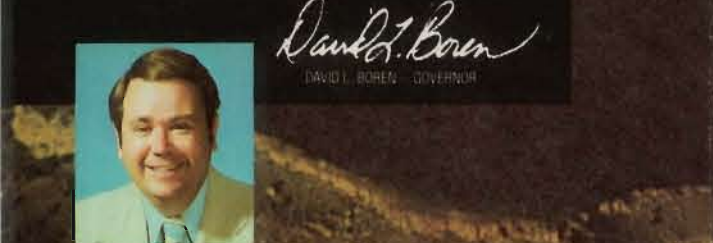




# OKLAHOMA



Driving across Oklahoma is an experience of landscape without equal. Prairie, mountains, forest, forever stretching plain come together in a mosaic of color, of mood. We are proud that much of our land remains as it was before the first settlers arrived on North American shores. Preservation of wilderness is an Oklahoma legacy; we find freedom in fresh air and unobstructed views. I hope that each of you will take the opportunity to savor the varied faces of our land. A unique outdoor experience is awaiting at the end of any Oklahoma road.



TRANSPORTATION COMMISSION  
 William R. Nash, Tulsa; W. E. Allford McAlester, Martin Clark, Ada  
 James Gimpoli, Enid; Mrs. Robert L. Parker, Tahlequah  
 Glenn Southall, Altus; Stanton L. Young, Oklahoma City  
 R. A. Ward, Director-Chief Engineer

OFFICIAL STATE TRANSPORTATION MAP FOR FREE DISTRIBUTION



*Great Plains*  
SHORTGRASS PRAIRIE



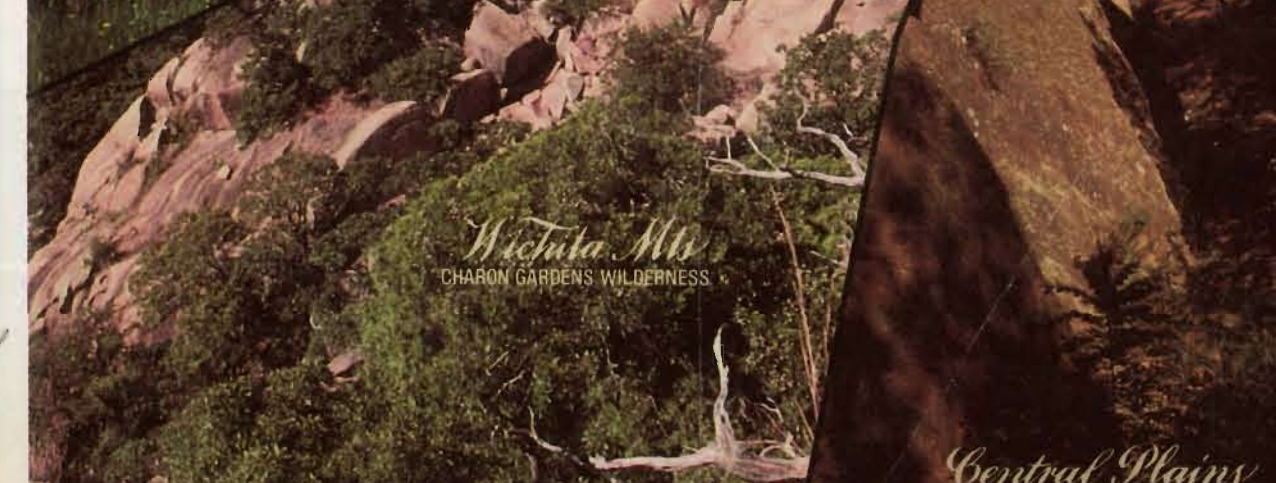
*Black Mesa*  
OKLAHOMA'S HIGHEST POINT



*Antelope Hills*  
INDIAN BATTLE AND SACRIFICE



*Quartz Mts*  
DEVIL'S CANYON AREA



*Wichita Mts*  
CHARON GARDENS WILDERNESS

The stark mesas of Cimarron County, high, silent and brooding, dominate the northwestern plains. From this, our highest point, the land drifts eastward in indistinct decline, bound by the tenacious shortgrass, grama, buffalo, mesquite. The plains hold stark canyons cut from pink and white Alabaster, and endless miles touched by moonlight silver on winter sage. The eye cannot contain the sweep of this big country; it holds too much in distance and in time.

South rise the rugged Wichitas, stark granite in bold relief over the buffalo country of old. East of this aged mountain fortress unfolds the geological wonder of the Arbuckle range, with limestone rows of grey limestone left from convulsions of a young earth.

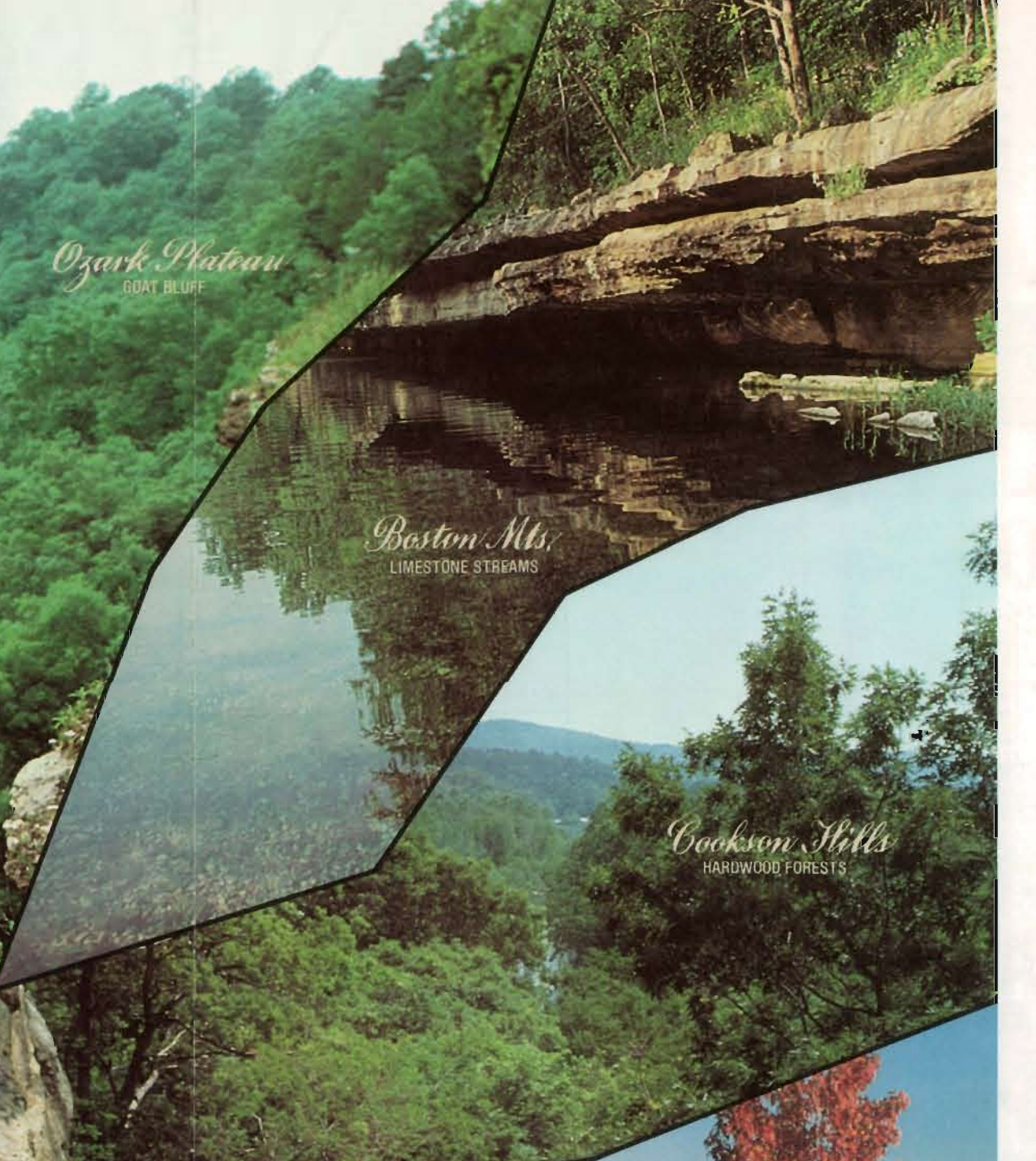
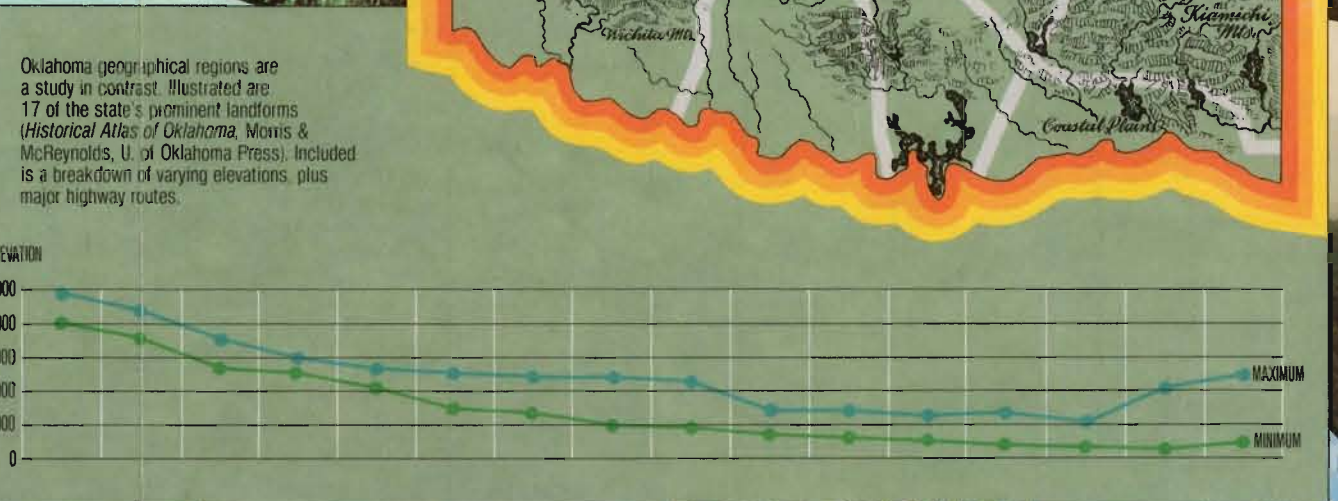
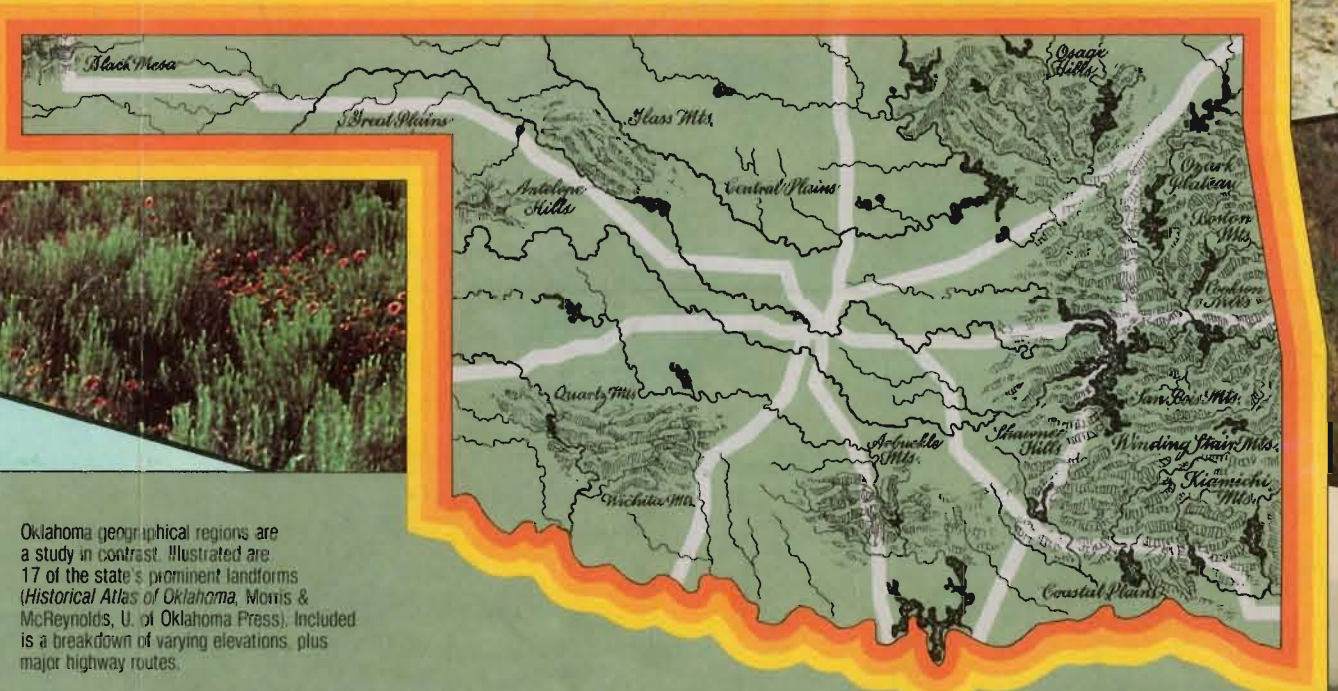
North are the sweeping Osage tallgrass hills, true prairie, bridled waist high in waving bluestem grass. East, the upswEEPing birth of the Ozarks, dark forest deep in the tall hardwoods, quiet and clear-running streams. The rivers flow southeast, a watershed feeding the valleys of the Ouachitas, each low mountain pushing a canopy of pine into eternal haze. In these southeastern lowlands lies the quiet blackwater, shadowed by mystical cypress trees and the strange echoes of the swamp country.

From the crest of Black Mesa to the blackwater sloughs near Broken Bow, elevations differ well over 4,000 feet. Between lie a geographic sampling of North America's more unique physical regions - glittering salt flats, gypsum and mica-flecked buttes, deep redstone canyons. Much remains untouched - still natural and wild in beauty and in spirit, all a portion of each Oklahoman's birth right - to protect and preserve.

## OKLAHOMA: A VARIED LAND



*Osage Hills*  
TALLGRASS PRAIRIE



*Ozark Plateau*  
ROCK BLUFF



*Boston Mts*  
LIMESTONE STREAMS



*San Bois Mts*  
HARDWOOD-PINE HIGHLANDS



*Winding Stair Mts*  
BLACK FORK RIDGES



*Niamochi Mts*  
MCCURTAIN WILDERNESS



*Coastal Plains*  
CYPRESS OXBOWS

