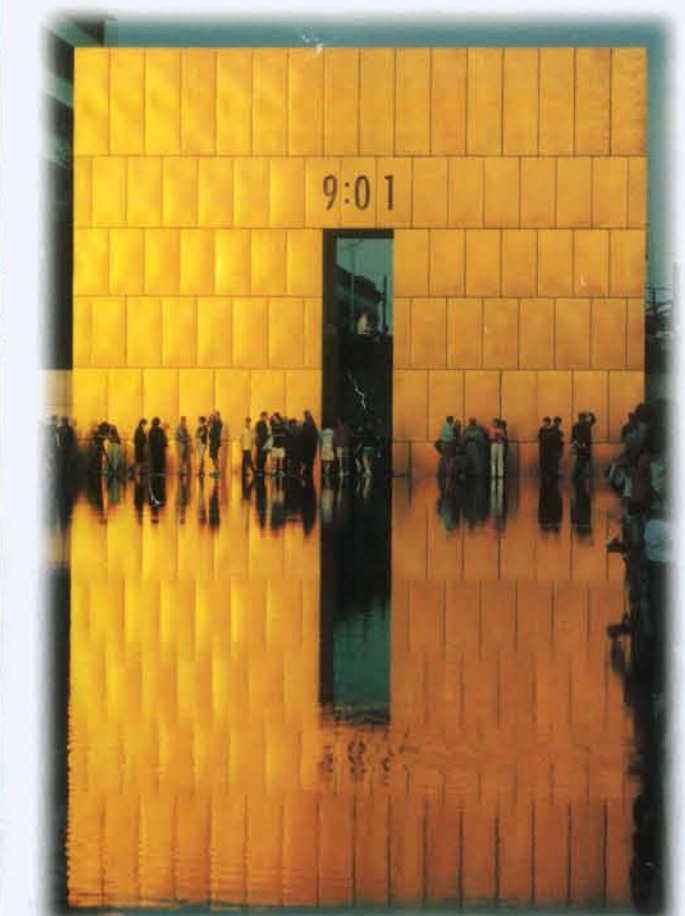


# NEW TREASURES. NEW ADVENTURES.

Oklahoma is an emerging, ever-evolving state. Each year there's much more to see and explore. Like the new Bricktown Canal in Oklahoma City (shown, cover) - one of many attractions opened or expanded since 1999. Here's a sampling of other noteworthy additions...



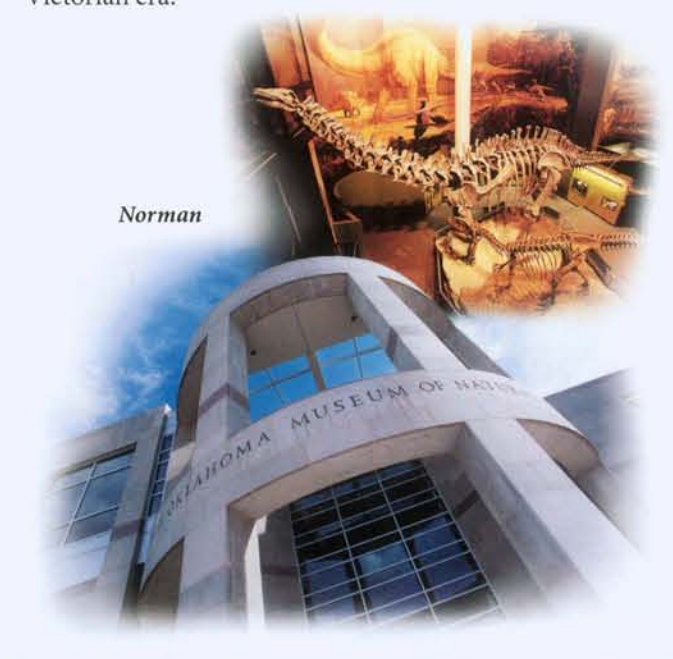
Oklahoma City National Memorial, Downtown

**THE OKLAHOMA CITY NATIONAL MEMORIAL**  
Dedicated on April 19, 2000 - exactly five years after the Alfred P. Murrah Federal Building was destroyed in the largest terrorist attack on U.S. soil in history - this new Memorial has been designated as a National Park.  
**The Symbolic Memorial** occupies the now-sacred soil where the Murrah Building once stood. Visitors enter through the Gates of Time - monumental twin structures that frame the moment of destruction at 9:02 a.m. Inside, the Field of Empty Chairs honors each of the 168 lives lost. The Reflecting Pool provides a peaceful setting for quiet thoughts. And the Survivor Tree stands as a profound symbol of human resilience.  
Opening in early 2001 will be The Oklahoma City National Memorial Center and The Oklahoma City National Memorial Institute For The Prevention Of Terrorism.



National Cowboy & Western Heritage Museum, Oklahoma City

**THE NATIONAL COWBOY & WESTERN HERITAGE MUSEUM** Home to one of the nation's finest collections of contemporary Western art for 40 years. Through five elaborate new galleries, the museum has expanded its mission to preserve America's unique Western heritage. It was recently accredited by the American Association of Museums, giving it world-class museum status.  
**Prosperity Junction** is a life-sized, turn-of-the-century Western town with 19 authentic buildings. Three new galleries explore early Western culture - **The American Cowboy Gallery**, **The American Rodeo Gallery** and **The Joe Grandee Museum of the Frontier West**. American Indian tribal history, culture and art are examined in **The Native American Gallery**.  
And **The Weitzenhoffer Gallery of Fine American Arms** offers an elegant presentation of U.S. firearms from the Victorian era.



**SAM NOBLE OKLAHOMA MUSEUM OF NATURAL HISTORY**  
The nation's largest university-based museum is situated on a 60-acre site at the University of Oklahoma in Norman. Five magnificent new galleries introduce visitors to the state's rich and fascinating natural history - including two of the largest dinosaurs ever found: an Apatosaurus that's more than 92 feet long; and a Pentaceratops, whose massive 10.5-ft. skull is the largest of any animal ever to walk the earth.



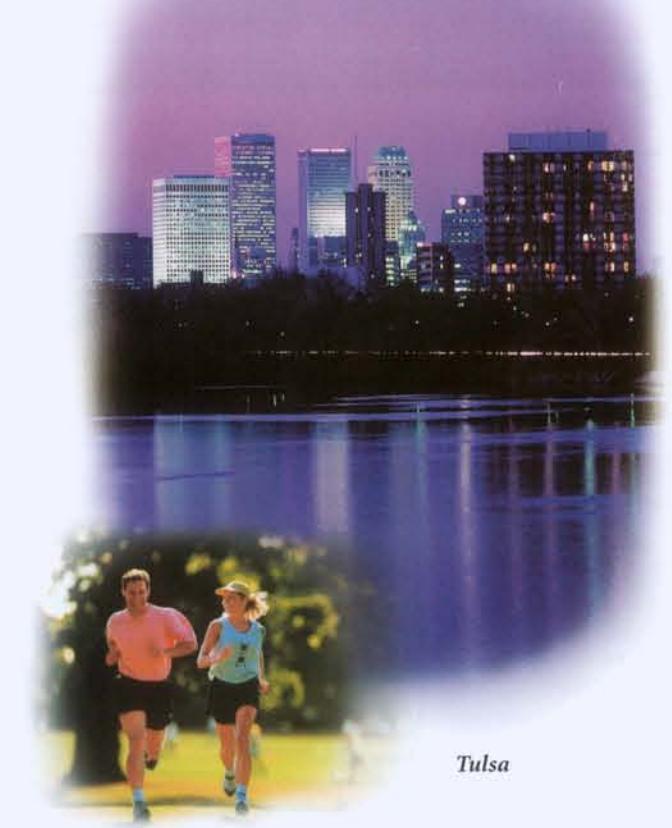
North of Altus

**PRICE TOWER** Frank Lloyd Wright's tallest skyscraper is located in Bartlesville. Built in 1956, it has undergone an \$8 million renovation - where today it remains "the tree that escaped the crowded forest," as Wright himself once referred to it. One of only a few examples of Frank Lloyd Wright architecture open to the public, it will be one of only two in the world with overnight accommodations.

**QUARTZ MOUNTAIN RESORT** Lying in the southwestern part of the state is this scenic lakeside retreat cradled in the Wichita Mountains. It surrounds Lake Altus-Lugert with cabins, campsites, golf and a variety of recreational options. Within the resort, reconstruction on the lodge devastated by a 1995 fire is scheduled for completion in early 2001. The new lodge will be a showplace of Southwestern art and design, highlighted by \$2 million of original artwork.

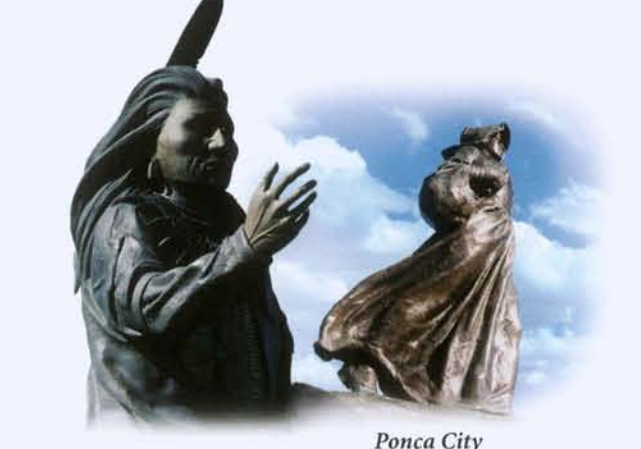


Price Tower, Bartlesville



Tulsa

**TULSA'S RIVER PARKS** Located along the Arkansas River, they offer everything from running and roller blading to cycling and sightseeing. Adding to the activity is the completion of a new 25-mile bicycle route that traverses the city, allowing cyclists to ride on a continuous off-street trail from SH-97 near downtown Sand Springs to 101st St. South and Memorial Drive.



Ponca City

**STANDING BEAR PARK** A tribute to American Indians. The park's centerpiece is the majestic Standing Bear Statue, a 22-ft. bronze of the Ponca chief.

**THE PIONEER WOMAN MUSEUM** Also in Ponca City, this is a counterpart to the heroic 17-ft. bronze Pioneer Woman Statue. The expanded museum features exhibits on pioneer women in Oklahoma, from the early frontier to the space age.



Lake Texoma

**CHICKASAW POINTE** Oklahoma's newest golf course is one of its finest. This extraordinary new 18-hole golf course is open year-round, and is conveniently located halfway between Oklahoma City and Dallas on US-70, 13 miles west of Durant.

**SOUTHERN HILLS COUNTRY CLUB IN TULSA** WILL HOST THE 2001 U.S. OPEN CHAMPIONSHIP. ONE OF THE PREMIER EVENTS OF THE UNITED STATES GOLF ASSOCIATION, THE JUNE CHAMPIONSHIP IS EXPECTED TO DRAW THE BEST IN THE SPORT - INCLUDING TIGER WOODS AND DAVID DUAL.



## OKLAHOMA STATE PARKS FACILITIES GUIDE

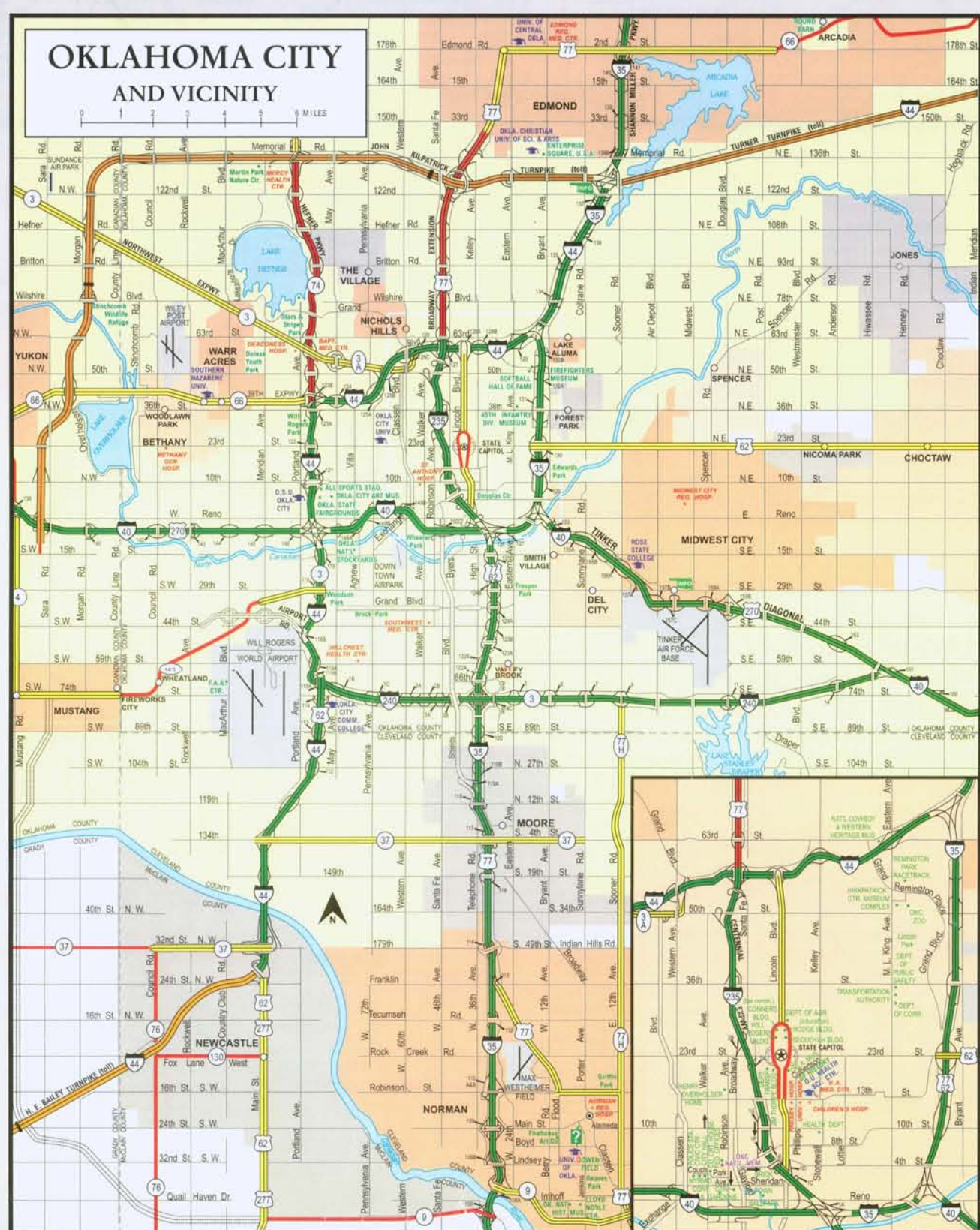
STATE PARKS	PHONE NUMBER	MAP NUMBER	RESTROOMS	CAMPING	BOATING	SWIMMING	HIKING	TRAIL RIDING	ARCHERY	BOULDER CHALLENGE	WILDLIFE	OTHER FACILITIES
ADAIR	918/696-6613	P-3	•	•	•	•	•	•	•	•	•	•
ALABASTER CAVERNS	580/621-3381	H-1	•	•	•	•	•	•	•	•	•	•
ARROWHEAD*	918/339-2204	N-5	•	•	•	•	•	•	•	•	•	•
BEAVER*	580/625-3373	E-1	•	•	•	•	•	•	•	•	•	•
BEAVERS BEND*	580/494-6300	P-7	•	•	•	•	•	•	•	•	•	•
BENNEZE*	918/786-9447	D-1	•	•	•	•	•	•	•	•	•	•
BLACK MESA*	580/426-2222	A-1	•	•	•	•	•	•	•	•	•	•
BOGGY DEPOT	580/889-5625	M-7	•	•	•	•	•	•	•	•	•	•
BOILING SPRINGS*	580/256-7664	H-2	•	•	•	•	•	•	•	•	•	•
CHEROKEE*	918/423-8066	D-2	•	•	•	•	•	•	•	•	•	•
CHEROKEE LANDING*	918/427-5716	O-3	•	•	•	•	•	•	•	•	•	•
CLAYTON LAKE*	918/569-7981	O-6	•	•	•	•	•	•	•	•	•	•
CROWDER LAKE*	580/343-2443	L-4	•	•	•	•	•	•	•	•	•	•
FORT COBB*	405/643-2249	I-5	•	•	•	•	•	•	•	•	•	•
FOSS*	580/570-4433	H-4	•	•	•	•	•	•	•	•	•	•
FOUNTAINHEAD*	918/689-5311	N-4	•	•	•	•	•	•	•	•	•	•
GLASS MOUNTAINS	580/227-2512	J-2	•	•	•	•	•	•	•	•	•	•
GREAT PLAINS	580/569-2032	H-6	•	•	•	•	•	•	•	•	•	•
GREAT SALT PLAINS*	580/626-4731	J-1	•	•	•	•	•	•	•	•	•	•
GREENLAF*	918/487-5196	D-4	•	•	•	•	•	•	•	•	•	•
HEAVENLY Limestones	918/653-2261	P-5	•	•	•	•	•	•	•	•	•	•
HOCKATOWN*	405/494-6452	P-2	•	•	•	•	•	•	•	•	•	•
HONEY CREEK*	918/786-9447	O-7	•	•	•	•	•	•	•	•	•	•
KEYSTONE*	918/865-4991	M-3	•	•	•	•	•	•	•	•	•	•
LAKE ELCHA	918/253-8790	D-2	•	•	•	•	•	•	•	•	•	•
LAKE MURRAY*	580/223-4004	K-7	•	•	•	•	•	•	•	•	•	•
LAKE TEXOMA*	580/564-2566	L-7	•	•	•	•	•	•	•	•	•	•
LAKE WESTER*	918/655-7756	P-5	•	•	•	•	•	•	•	•	•	•
LAKE THUNDERBIRD*	405/360-3572	K-5	•	•	•	•	•	•	•	•	•	•
LITTLE BLUE-RISNEY*	580/823-4004	K-7	•	•	•	•	•	•	•	•	•	•
LITTLE SAHARA*	580/823-1471	H-2	•	•	•	•	•	•	•	•	•	•
MCGEE CREEK*	580/889-5822	N-7	•	•	•	•	•	•	•	•	•	•
NATURAL FALLS*	918/422-5802	P-2	•	•	•	•	•	•	•	•	•	•
OKMULGEE*	918/756-5971	M-4	•	•	•	•	•	•	•	•	•	•
OSAGE HILLS*	918/336-4141	M-3	•	•	•	•	•	•	•	•	•	•
QUARTZ MOUNTAIN*	580/343-2238	G-5	•	•	•	•	•	•	•	•	•	•
RAYMOND GARY*	580/873-2307	O-7	•	•	•	•	•	•	•	•	•	•
RED ROCK CANYON*	405/542-6344	I-4	•	•	•	•	•	•	•	•	•	•
ROBBERS CAVE*	918/465-2565	O-5	•	•	•	•	•	•	•	•	•	•
ROMAN NOSE*	580/623-7281	E-3	•	•	•	•	•	•	•	•	•	•
SALT LAKE/BIRUSHY CREEK	918/773-6507	O-4	•	•	•	•	•	•	•	•	•	•
SEDIOWAH BAY*	918/683-0878	O-3	•	•	•	•	•	•	•	•	•	•
SEDIOWAH/WESTERN HILLS*	918/772-2046	O-3	•	•	•	•	•	•	•	•	•	•
SNOWDALE*	918/435-8066	O-2	•	•	•	•	•	•	•	•	•	•
SPAVINAW*	918/435-8066	O-2	•	•	•	•	•	•	•	•	•	•
TALPENEA	918/561-2052	O-4	•	•	•	•	•	•	•	•	•	•
TENKILLER*	918/489-5541	O-4	•	•	•	•	•	•	•	•	•	•
TWIN BRIDGES*	918/540-2545	O-1	•	•	•	•	•	•	•	•	•	•
WAH-SHA-SHE*	918/532-4627	M-1	•	•	•	•	•	•	•	•	•	•
WALNUT CREEK	918/242-3362	M-2	•	•	•	•	•	•	•	•	•	•

## WELCOME CENTER DIRECTIONS

**Arriving From The North:** On I-35, 10 miles south of the Oklahoma/Kansas border near Blackwell, OK. Free coffee. 405-363-2624  
**Arriving From The Northeast:** On I-44, Will Rogers Turnpike, east of Miami. Free coffee, gift shop. 918-542-9303  
**In Tulsa:** On I-44, just east of Tulsa, exit 161 East Avenue - north side. Free coffee. 918-439-3212  
**Arriving From The East:** Two locations: (1) On US-412, Cherokee Turnpike, 13 miles west of Oklahoma/Arkansas border, near Kansas, OK. Free coffee. 918-868-3427 (2) On I-40, 17 miles west of the Oklahoma/Arkansas border, near Sallisaw, OK. Free coffee. 918-775-9601  
**Arriving From The South:** Two locations: (1) On US-69/75, two miles north of the Oklahoma/Texas border near Colbert, OK. Free coffee. 580-296-2672 (2) On I-35, three and one-half miles north of the Oklahoma/Texas border near Thackerville, OK. Free coffee. 580-276-2263  
**Arriving From The Southwest:** On I-44, H.E. Bailey Turnpike one-half mile north of Walters at the Elmer Graham Concession Plaza. Free coffee, gift shop. 580-875-2425  
**Arriving From The West:** On I-40, nine miles east of the Oklahoma/Texas border near Erick, OK. Free coffee. 580-526-3283

## HELPFUL OKLAHOMA PHONE NUMBERS & WEB SITES

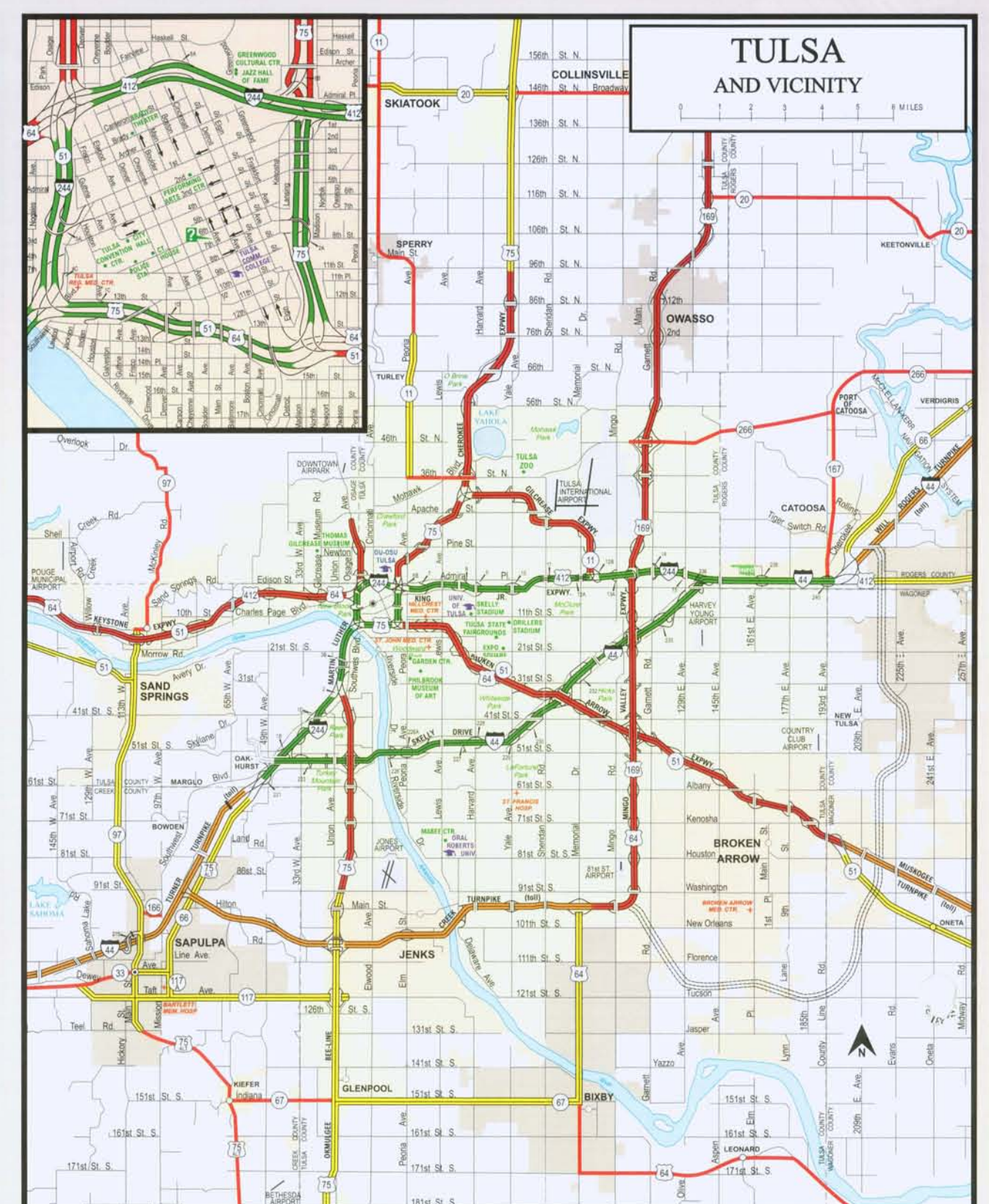
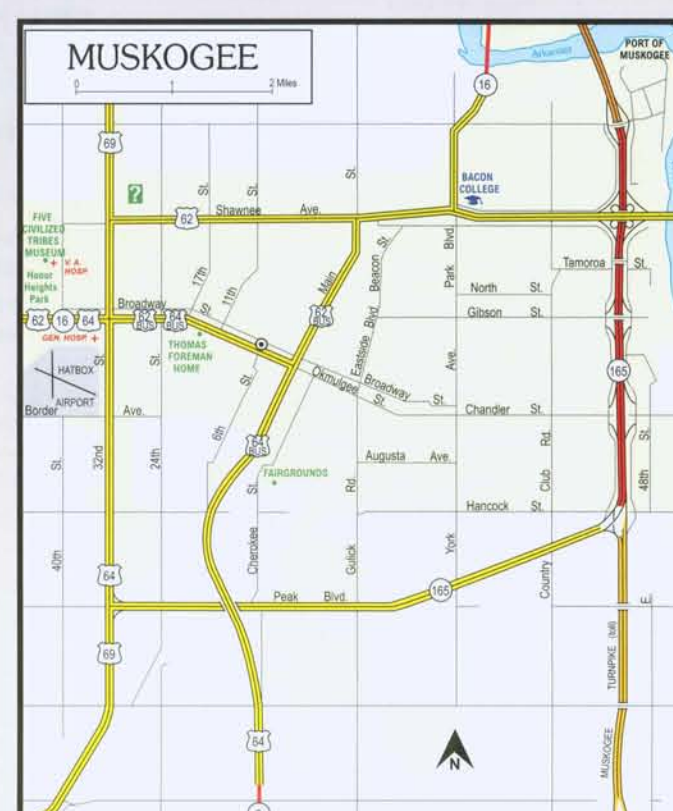
**Oklahoma State Web site** www.state.ok.us  
**State Tourist Information** 800-652-6552  
State Resorts, Parks & Cabins 800-654-8240  
In Oklahoma City Metro Area 405-521-2464  
State Tourism Web site www.travelok.com  
**Highway Patrol/Emergency** 405-682-4343  
Cellular Phone Emergency \*55  
Road & Weather Conditions 405-425-2385  
**Transportation Information** 405-522-8000  
Litter Hotline (Report Littering) 888-5-LITTER  
Turnpike Tolls/Access 800-745-3727  
ODOT's website www.odot.org  
OTAS website www.pikepass.com  
**Wildlife Dept. Web site** state.ok.us/~odwc/  
Fishing Information 800-275-3474  
Hunting Information 405-521-2739  
**Oklahoma City National Memorial** 405-235-3313  
website www.connections.oklahoman.net/memorial/



**OKLAHOMA TRANSPORTATION AUTHORITY**  
3500 Martin Luther King Blvd.  
P.O. Box 11357  
Oklahoma City, Oklahoma 73136  
(405) 425-3600

**PIKEPASS**  
The PIKEPASS saves time and money for the turnpike traveler. An electronic sensor in your vehicle records your passage and deducts the toll from a pre-paid account while driving on Oklahoma's turnpikes. Non-pike users must stop and pay at toll booths or exact-change kiosk. For more information call 1-800-PIKEPASS.

**WILL ROGERS TURNPIKE** (88.5 miles)  
**TURNER TURNPIKE** (86.0 miles)  
**CIMARRON TURNPIKE** (89.2 miles)  
**MUSKOGEE TURNPIKE** (53.1 miles)  
**H. E. BAILEY TURNPIKE** (86.4 miles)  
**INDIAN NATION TURNPIKE** (105.2 miles)  
**JOHN KILPATRICK TURNPIKE** (17.3 miles)  
**CHICKASAW TURNPIKE**  
**CHEROKEE TURNPIKE** (32.8 miles)  
**CREEK TURNPIKE**



Governor & Mrs. Keating

Oklahoma is a strikingly diverse state and one that continues to grow by leaps and bounds. Beyond the new attractions highlighted inside, I invite you to come discover all the exciting treasures Oklahoma has to offer.  
What's more, in June 2001, golf fans from across the world will train their eyes on Oklahoma as the U.S. Open Championship comes to our state. The United States Golf Association's most prestigious event will be played at the renowned Southern Hills in Tulsa. Southern Hills is certainly no stranger to the event, having hosted two prior Open Championships. This year's championship will bring out golf's brightest stars, including the amazing Tiger Woods.  
Oklahoma is a great golf state. Better yet, with our mild climate, our 190 golf courses (116 of which are public) can be played nearly year-round.  
But golf is just the beginning for a state that's packed with activities and adventure. Throughout Oklahoma's historic towns and vibrant cities, you'll find something to suit nearly every taste. Because whether you enjoy arts or recreation or weekend retreats, Oklahoma has it all. I'm proud to welcome you to Oklahoma, a state that just keeps getting better every year!



FOR FREE DISTRIBUTION