



US-77
Garvin County
ODOT Public Meeting
December 3, 2015

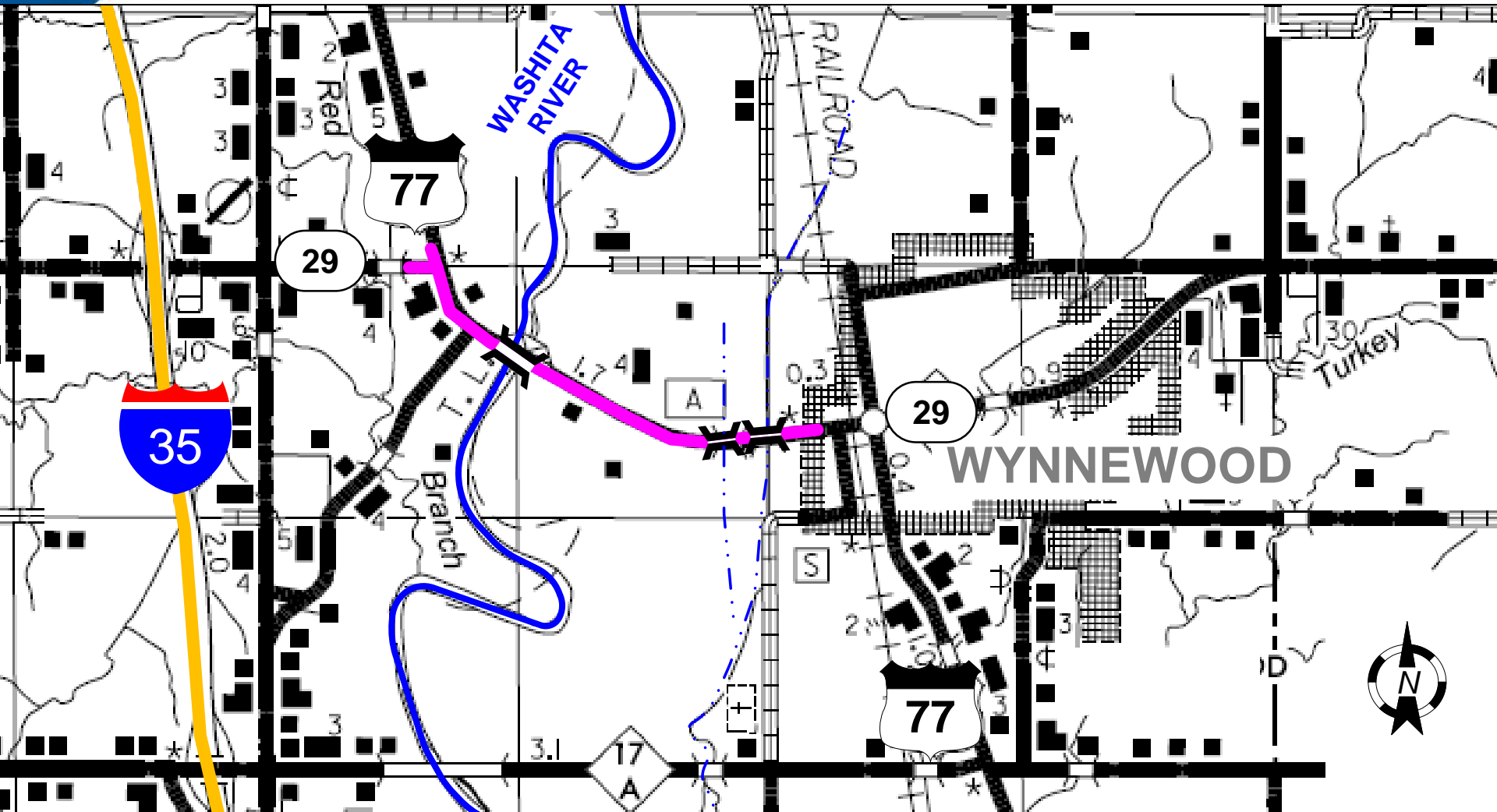
WELCOME

Presented by: The Oklahoma Department of Transportation,
Tetra Tech, CEC, & CC Environmental

Purpose of Meeting

- Inform the public about the proposed improvements to US-77 over the Washita River, Washita River Overflow, & Unnamed Creek beginning at SH-29 to just east of Long Avenue in Wynnewood, Garvin County
- Present the results of the environmental studies
- Solicit public input for the proposed changes to US-77 for further consideration
- Answer questions and address concerns

Location Map



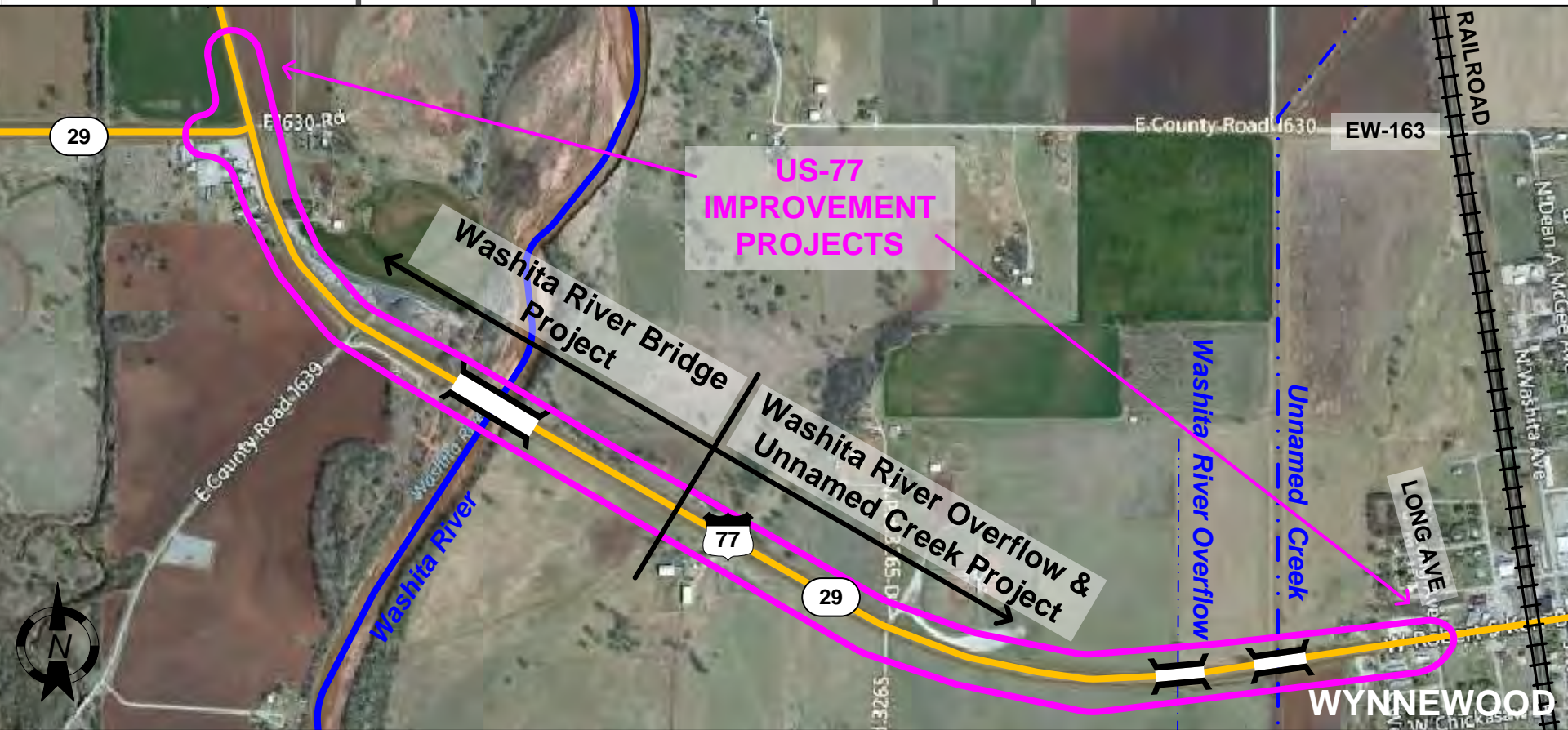
Project Purpose & Need

- Replace one structurally deficient bridge, and two functionally obsolete (narrow) bridges
- Improve the efficiency of US-77



Presentation Overview

- Two separate construction projects



Existing Roadway Conditions

- 2-lane highway built in 1959
- Two, 12-ft driving lanes with 8-ft paved shoulders
- Speed limit: 65 mph highway with 45 mph approaching Wynnewood
- Existing Traffic (2015) 6,900 vehicles per day

Project Personnel

OK Department of Transportation



Tetra Tech



CEC Infrastructure Solutions



CC Environmental



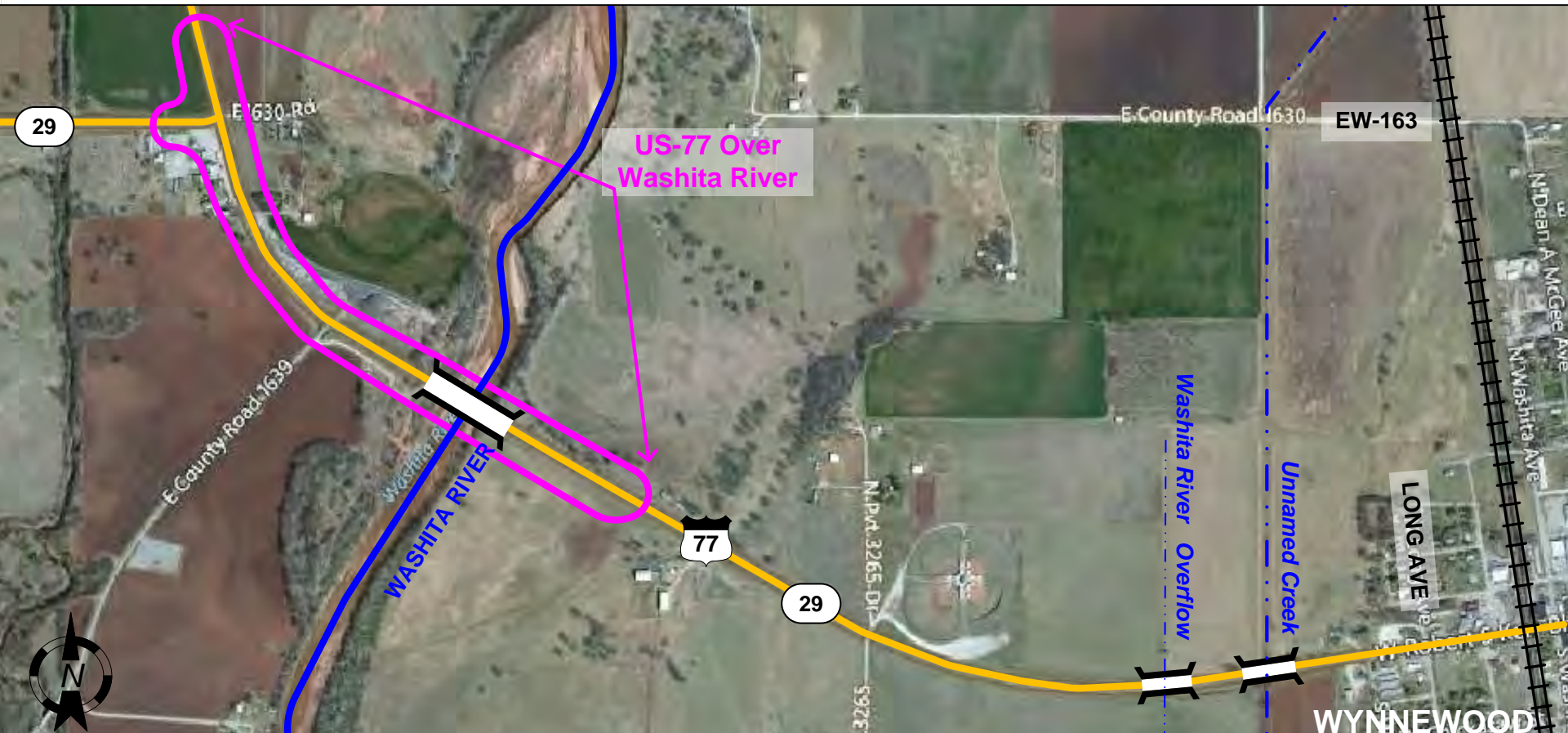
Washita River Bridge Project

- Design Engineer: CEC Infrastructure Solutions



Washita River Bridge Project

Begin at SH-29 intersection & proceed east approximately 1 mile



Existing Conditions

- Existing Washita River Bridge
 - Built 1959
 - 28-ft wide
 - 610 ft long, 4–100-ft pony trusses & 1–210-ft high truss
 - Structurally Deficient

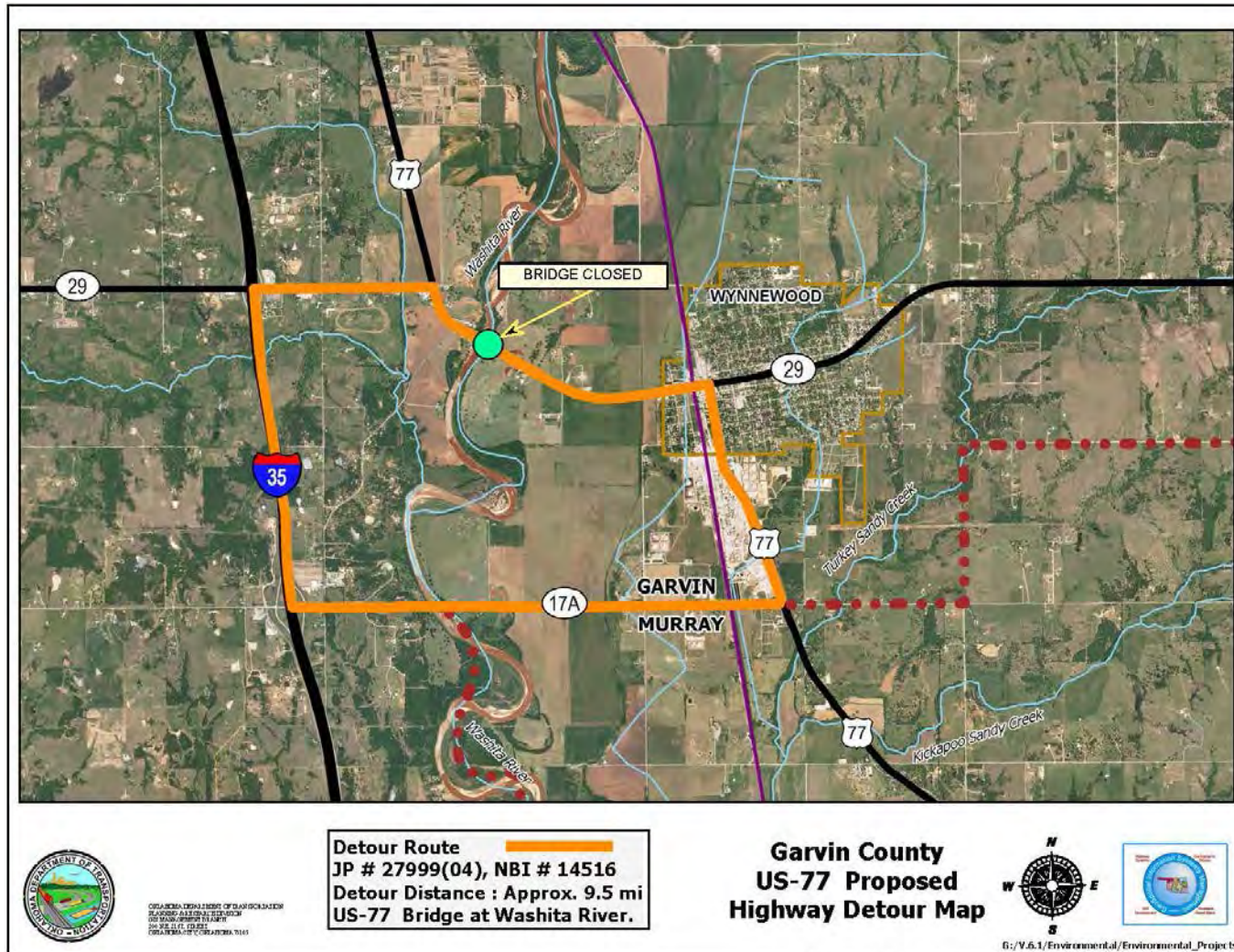
Proposed Improvements

- Replace existing truss bridge
 - Bridge will consist of 4–12-ft wide driving lanes and 2–10-ft wide shoulders
 - 672 ft long new bridge
- Widen the approach roadway east and west of the bridge
 - 4–12-ft wide driving lanes
 - 2–10-ft wide shoulders

Proposed Improvements

- Reconstruct on Existing Alignment with road closed
 - Provides the least construction cost and minimizes the right-of-way and utility impacts, but with a higher impact to road users.
 - Provide alternate route during construction
 - Posted Detour Route on SH 17A and I-35 is 10 miles long from the west end of bridge to the east end of bridge
 - Road closure letters sent to property owners in 2012, no comments were received

Posted Detour Route



Schedule of Improvements

- Project Duration:
 - Initial Estimate = 10 months (300 days)
 - Time may be reduced to 9 months (270 days) or less with construction performance incentives/disincentives
- Right-of-Way/Utilities: underway
- Begin Construction: 2018
- Total Cost Estimate: \$9.13 million

Washita River Overflow & Unnamed Creek

- Design Engineer: Tetra Tech



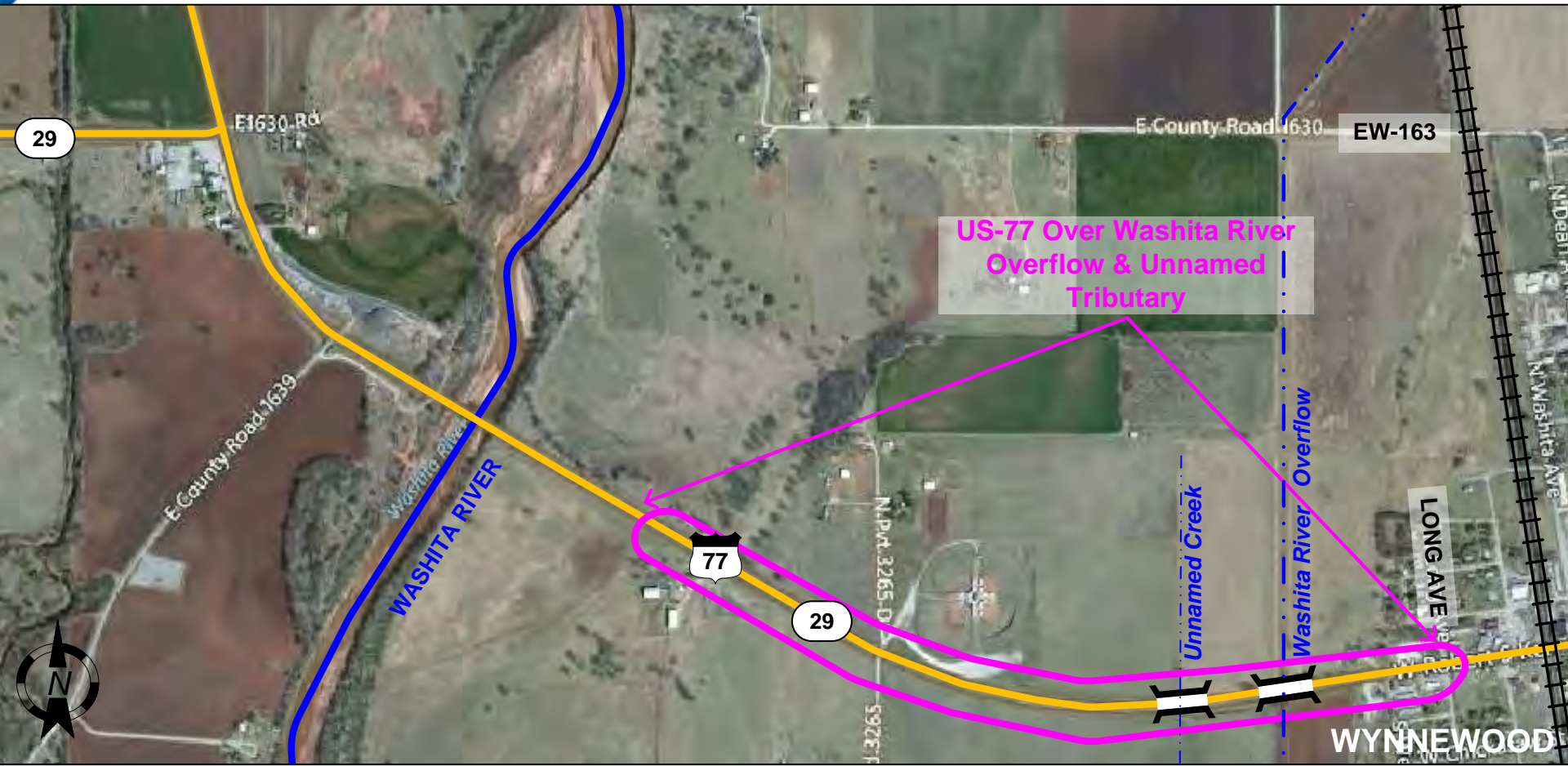
Washita River Overflow



Unnamed Creek

Washita River Overflow & Unnamed Creek Project

Begin at river bridge project, extend east ~1 mile to just past Long Ave.



Existing Conditions

- Bridges:
 - Washita River Overflow Bridge
 - Built 1932
 - 30-ft wide
 - 158 ft long, 7 –22.5-ft concrete slab spans
 - Unnamed Creek Bridge
 - Built 1932
 - 28-ft wide
 - 113 ft long, 5 –22.5-ft concrete slab spans

Proposed Improvements

- Roadway:
 - Reconstruction of existing pavement to accommodate future traffic (2035) 9,600 vehicles/day
 - Current and future traffic warrants 4 lanes
 - 4-lane open section
 - 4–12-ft wide driving lanes with 2–10-ft wide shoulders
 - Transition to 2-lane open section in Wynnewood

Proposed Improvements



4-Lane Open Section

Proposed Improvements

- Bridges:
 - Washita River Overflow
 - 3–12-ft x 4-ft Reinforced Concrete Boxes Extended to the Clear Zone
 - Unnamed Creek
 - 3–14-ft x 7-ft Reinforced Concrete Boxes Extended to the Clear Zone

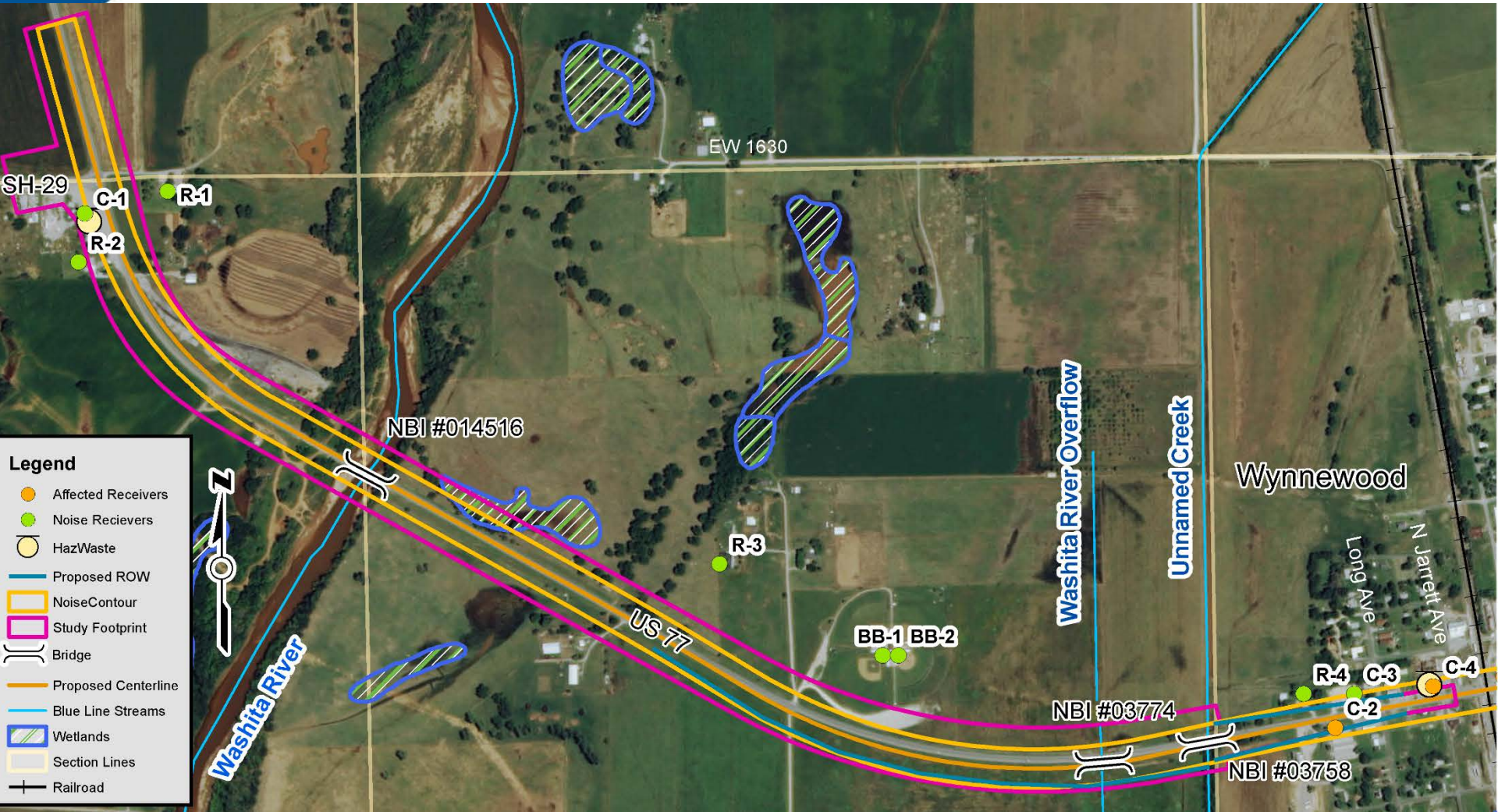
Proposed Improvements

- Construction Phase
 - Maintain one lane of traffic in each direction throughout construction
 - Offset alignment to the south to:
 - Facilitate removal of existing bridges
 - Construct new structures
 - Avoid ballpark impacts
 - Provide temporary access drives
 - Residential
 - Commercial
 - Field Entrances
 - Minimize impact to properties and owners

Schedule of Improvements

- Schedule as identified in the ODOT 8-Year Construction Work Plan
- Project Duration: 8 months
- Right-of-Way/Utilities: 2017
- Begin Construction: 2020
- Total Cost Estimate: \$6.27 million

Environmental Review



US-77 Over Washita River and Washita River Overflow & Unnamed Creek

Environmental Process

- Issues Considered, Studied, & Evaluated
 - Right-of-Way Impacts
 - Wetland Impacts
 - Stream Impacts
 - Floodplain Impacts
 - Farmland Impacts
 - Threatened & Endangered Species
 - Tribal Concerns
 - Cultural Issues
 - Archeological Sites
 - Hazardous Waste Sites
 - Park Impacts
 - Noise Impacts

Environmental Findings

- Right-of-Way Impacts
 - Some right-of-way required
 - No residential or commercial displacements anticipated
- Stream & Wetland Impacts
 - Impacts to waters & wetlands anticipated
 - Requires Army Corps of Engineers review
- Cultural Issues & Archeological Sites
 - No historic properties affected
 - Off-project avoidance plan notes

Environmental Findings

- Hazardous Waste Sites
 - Leaking underground storage tank sites near southwest corner of SH-29/US-77 junction
 - Fueling station at US-77 & N. Jarret
 - Contamination possible, but not expected to affect construction
- Park Impacts
 - Ballpark complex should not be affected
 - Access will remain open during construction

Environmental Findings

- Noise Study
 - Noise study completed in accordance with ODOT noise policy (July 13, 2011). Utilized FHWA Traffic Noise Model in predicting existing and future noise levels.
 - Model inputs included traffic data, roadway geometry, and receiver site locations.
 - Receiver sites included 4 residences, 7 commercial properties, and 2 baseball fields.

Environmental Findings

- Noise Impacts
 - Based on the proposed project & future traffic, no residences or baseball fields would approach or meet 67dB(A).
 - Future noise levels ranged from +0.6 to +6.3 dB(A) over the existing condition.
 - No receivers are projected to experience a substantial increase in sound levels (15dB).

Summary

- Two separate projects
 - Washita River Bridge
 - Washita River Overflow & Unnamed Creek Bridges
- Proposed Improvements
 - Replace all three bridges with new structures
 - Improve the roadway
 - 4-12 ft wide driving lanes with 2-10 ft wide shoulders
 - Transition to 2 lanes in town

Next Steps

- Receive comments from public
- Complete/update environmental documents
- Complete/update design plans
- Begin/complete right-of-way acquisition & utility relocations
 - Washita River Bridge Project: *In progress*
 - Washita River Overflow & Unnamed Creek Project: 2017
- Construct projects
 - Washita River Bridge Project: 2017
 - Washita River Overflow & Unnamed Creek Project: 2020

Question & Comments

- More information is available online at www.odot.org/publicmeeting
- Comments may be provided as following:
 - Leave your comment form here tonight
 - Download and fill out form online
 - Mail forms to ODOT:
Oklahoma Department of Transportation
Environmental Programs Division
200 NE 21st Street
Oklahoma City, OK 73105
 - Email comments to:
odot-environment@odot.org
- **Comments due by December 18, 2015**