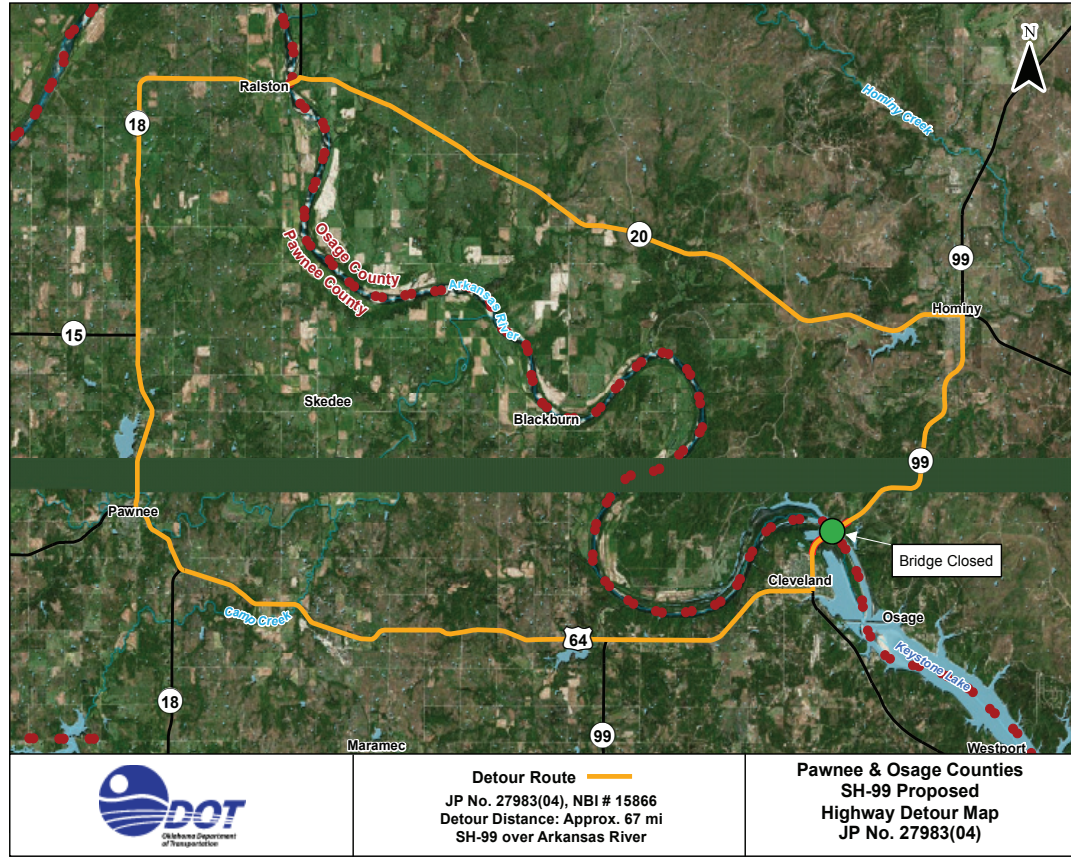


PROPOSED DETOUR



NOTES:

For additional information please contact:
David Saulsberry
 ODOT Environmental Project Manager
 (405) 521-2315
 odot-environment@odot.org



DIVISION 8

Division Engineer:
 Randle White P.E.



- Counties:**
- Craig
 - Creek
 - Delaware
 - Mayes
 - Nowata
 - Osage
 - Ottawa
 - Pawnee
 - Rogers
 - Tulsa
 - Washington

Total Road Miles:
 1,664.63

Total Interstate Miles:
 39.56

Total Bridges:
 1,117

Totals DO NOT include Toll Roads



www.odot.org/publicmeetings

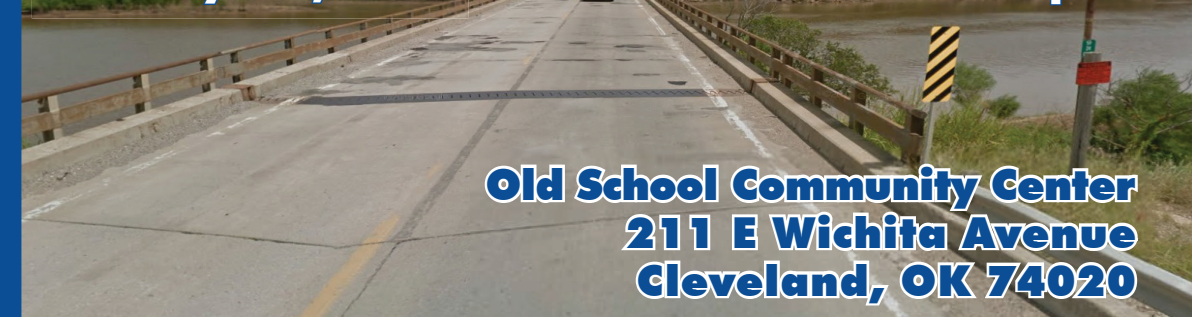


THE OKLAHOMA DEPARTMENT OF TRANSPORTATION

PUBLIC MEETING

February 18th, 2016

6:00 p.m.



Old School Community Center
 211 E Wichita Avenue
 Cleveland, OK 74020

SH-99
Pawnee & Osage
Counties

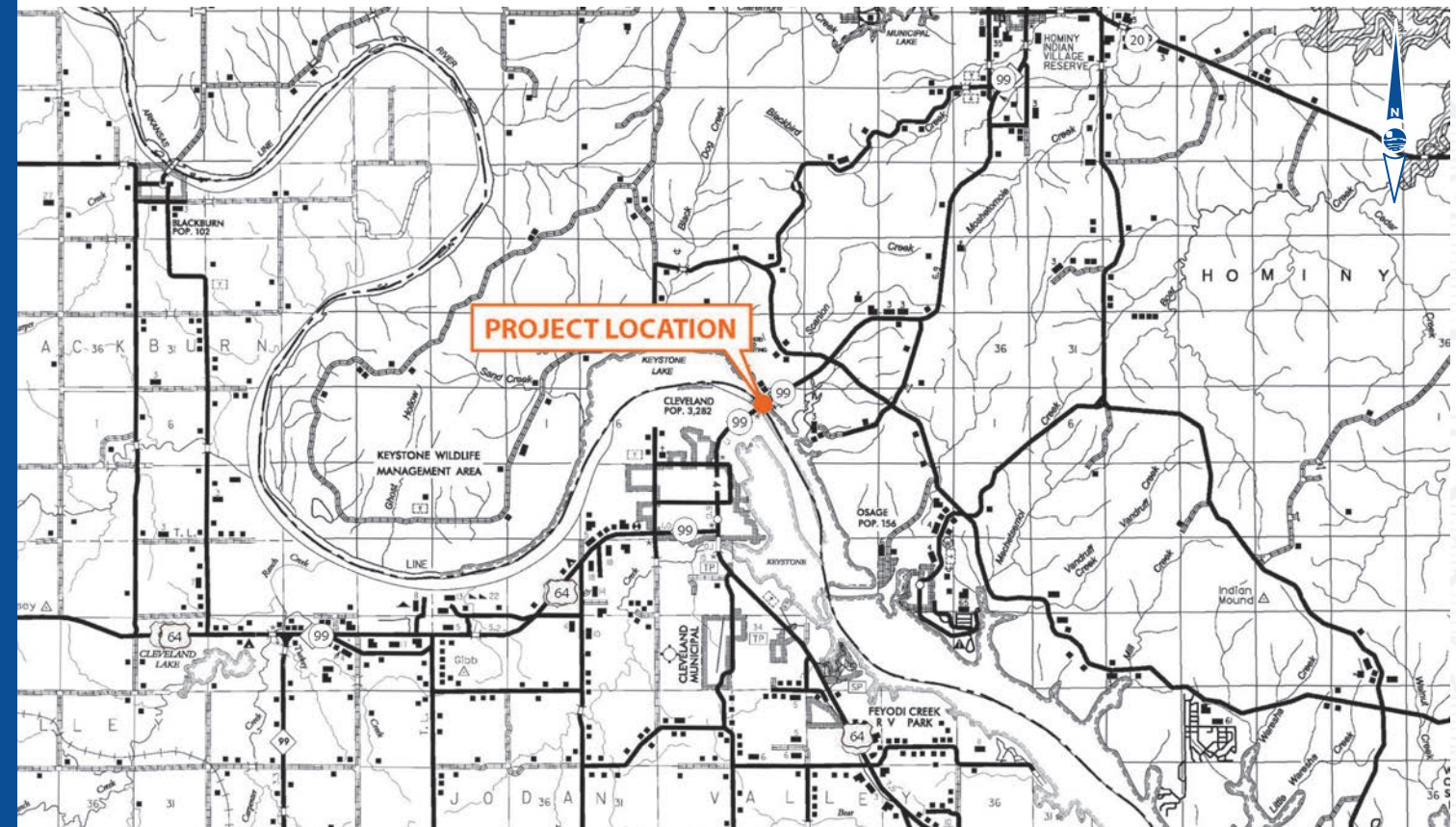
DESCRIPTION

The Oklahoma Department of Transportation (ODOT) is considering improvements to SH-99 bridge over the Arkansas River. The existing bridge is 28 foot wide and is considered structurally deficient. The proposed project will replace the bridge with a 44 foot wide bridge with two 12 foot wide driving lanes and 10 foot wide shoulders.

The project is currently scheduled to be let for construction in Federal Fiscal Year 2020 and will necessitate closure of the bridge and the approach roadway on State Highway 99. It is anticipated that the road closure will last approximately 240 days, with incentives and disincentives to reduce the closure time.

PURPOSE

The purpose of this meeting is to inform the public & solicit comments about the Department's proposed plan to replace the SH-99 bridge over the Arkansas River and the consideration to close the bridge during construction.



- GET INVOLVED -

If you have any questions or comments about the Oklahoma Department of Transportation's proposed projects, please visit our website at www.odot.org/publicmeetings to fill out an official comment form, send an e-mail to odot-environment@odot.org, or send a letter to:

OKLAHOMA DEPARTMENT OF TRANSPORTATION

Environmental Programs Division, 200 N.E. 21st St., Oklahoma City, OK 73105, Fax. (405) 522-5193

Comments due by March 03, 2016

PROJECT INFORMATION

Programmed Construction Cost:

\$9.8 Million

Construction programmed to start in:

2020

Current Annual Average Daily Traffic (AADT) in year 2015:

4,100 Vehicles per day

Future Estimated AADT by year 2035:

5,800 Vehicles per day

Construction along existing alignment would require a construction road closure



PROJECT SCOPE

