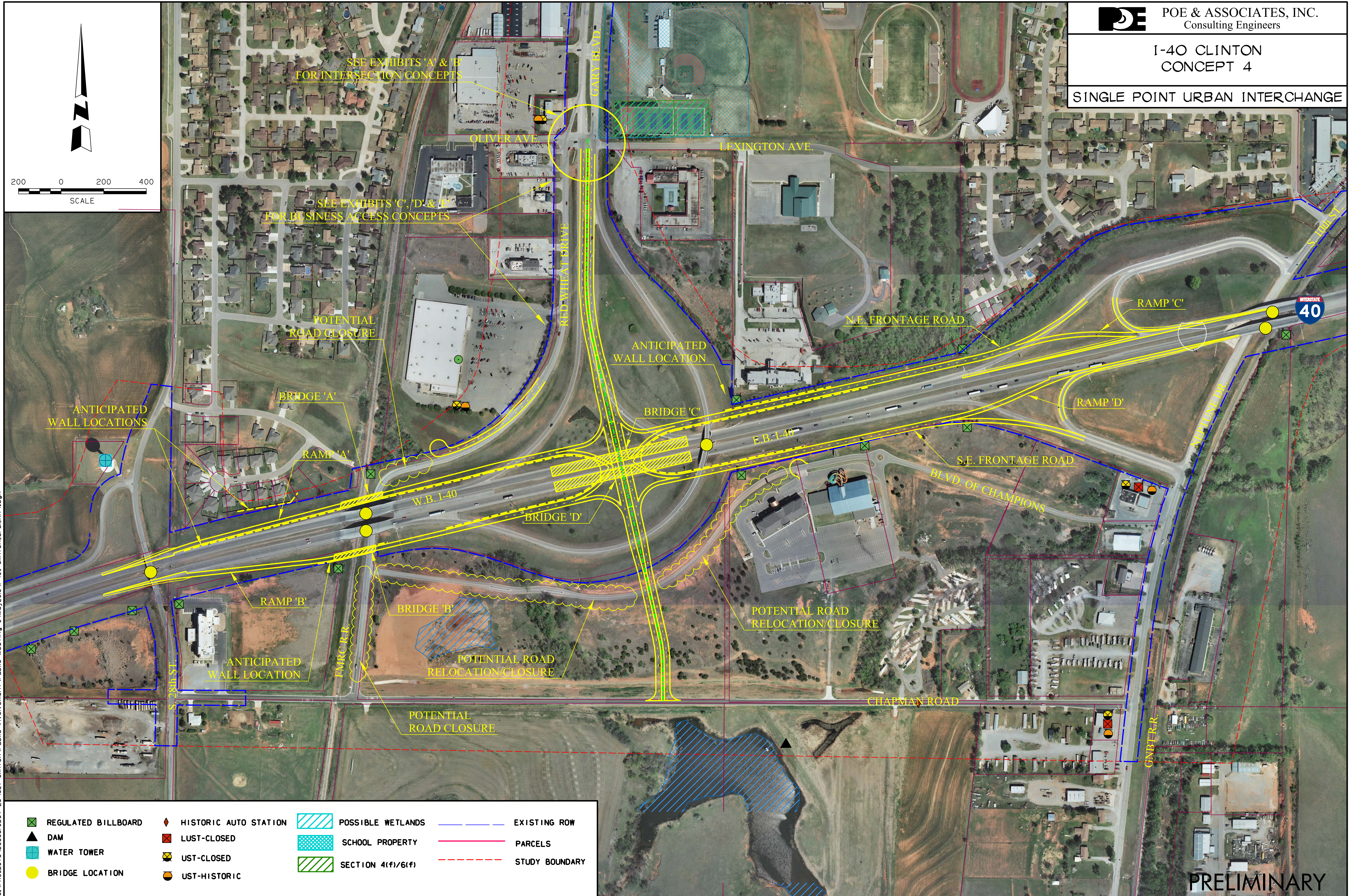


3:25:33 PM G:\PROJECTS\2030810DOT_EC-1637_Clinton\Public Involvement\Public Meeting 04May2016\I-40_Clinton_SPU_Alt4.dgn



REGULATED BILLBOARD	HISTORIC AUTO STATION	POSSIBLE WETLANDS	EXISTING ROW
DAM	LUST-CLOSED	SCHOOL PROPERTY	PARCELS
WATER TOWER	UST-CLOSED	SECTION 4(f)/(6)(f)	STUDY BOUNDARY
BRIDGE LOCATION	UST-HISTORIC		

PRELIMINARY