

PROPOSED TYPICAL SECTION



2 Lane Typical Section



PROJECT INFORMATION SUMMARY

- Total Programmed Estimated Cost of these projects: **\$19.8 Million**
- Right-of-Way & Utility Relocation programmed to start in: **2019**
- Construction programmed to start in: **2021**
- Current Annual Average Daily Traffic (AADT) in year 2016: **1,500 Vehicles a day**
- Future Estimated AADT by year 2036: **2,100 Vehicles a day**
- Road open to traffic during construction

*Totals DO NOT include Toll Roads or County Bridges

DIVISION 8 ENGINEER: RANDLE WHITE, P.E.

**Totals DO NOT include County Bridges

Total Road Miles*: 1,664.63 **Total Interstate Miles*:** 39.56 **Total Bridges**:** 1,117

Counties: Craig, Creek, Delaware, Mayes, Nowata, Osage, Ottawa, Pawnee, Rogers, Tulsa, Washington



PLEASE PROVIDE YOUR COMMENTS BY JANUARY 24, 2017

For more information about the project

David Saulsberry
NEPA Project Manager
Division 8
(405) 521-2315
odot-environment@odot.org

For more information about Public Participation

Frank Victor Roesler III
Public Involvement Officer
Strategic Asset & Performance Management
(405) 521-2350
publicmeetings@odot.org

<http://www.odot.org/publicmeetings>



DOT OPEN HOUSE
Oklahoma Department of Transportation
January 10th, 2017 @ 5:30 P.M. - 7:00 P.M.
Pawnee City Hall | 510 Illinois St. | Pawnee, OK 74058

**US-64 • Pawnee County, OK • JP: 24322(04)&(07)
Presentation of Proposed Improvements & Solicitation of Public Input**

Purpose of Meeting

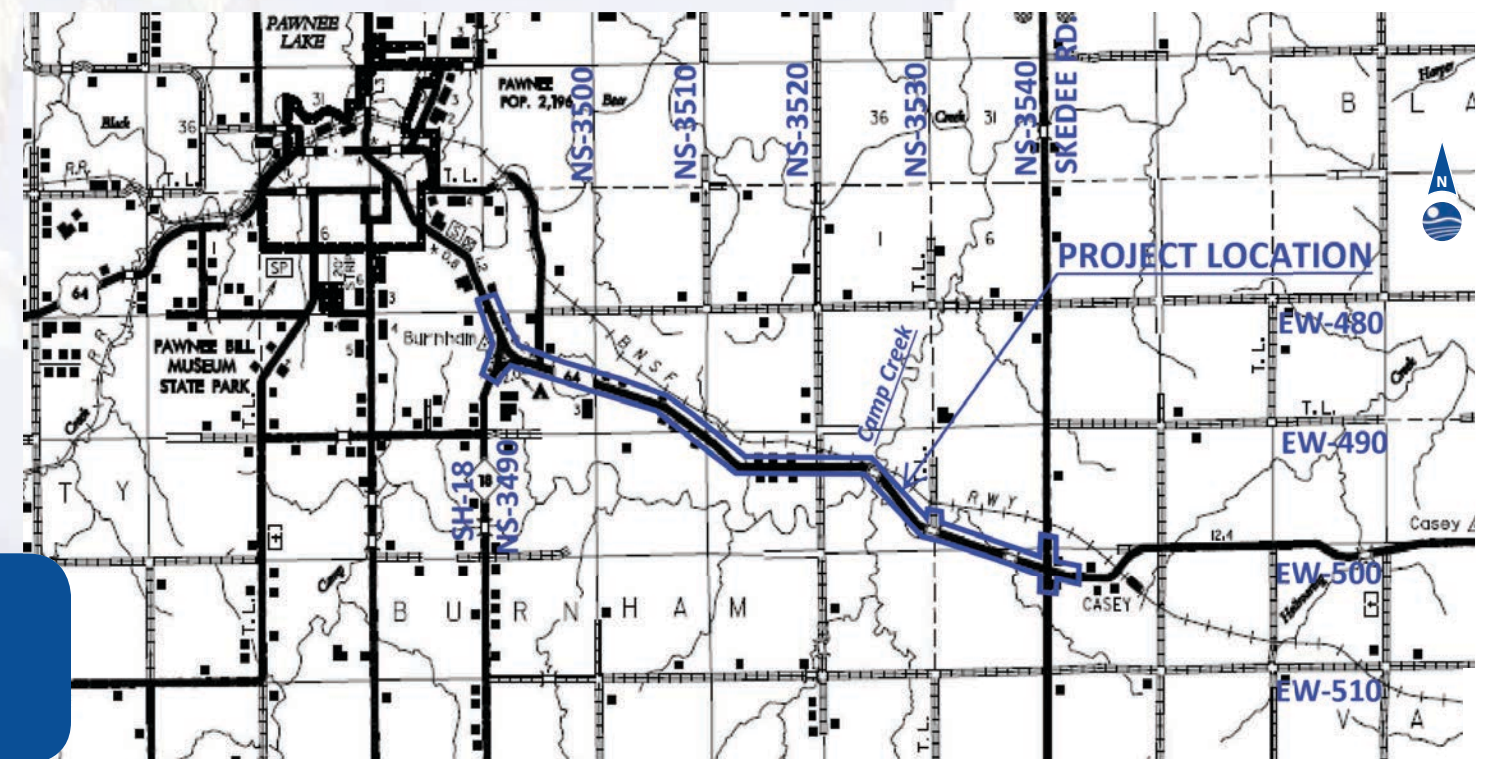
To inform the public and solicit comments regarding the Department's proposed improvements to US-64 in Pawnee County from the SH-18 junction, extending east approximately 6.5 miles to 1/4 mile east of NS-3540 (Skedee Road).

Project Background

The Oklahoma Department of Transportation (ODOT), in cooperation with the Federal Highway Administration (FHWA) is planning improvements to US-64 in Pawnee County from SH-18, extending east approximately 6.5 miles to 1/4 mile east of NS-3540 (Skedee Road). The existing highway through this extent consists of a two-lane undivided highway with no shoulders. The current traffic on this highway segment is 1,500 vehicles per day (vpd) with a 2036 projected traffic volume of 2,100 vpd, with 15% heavy trucks. Due to the condition of the existing pavement and safety concerning steep grades, limited sight distance and substandard horizontal and vertical curves, this portion of US-64 is planned for reconstruction of the pavement, changes to the alignment and the addition of shoulders. The purpose of the project is to improve safety on this segment of US-64.

Project Description

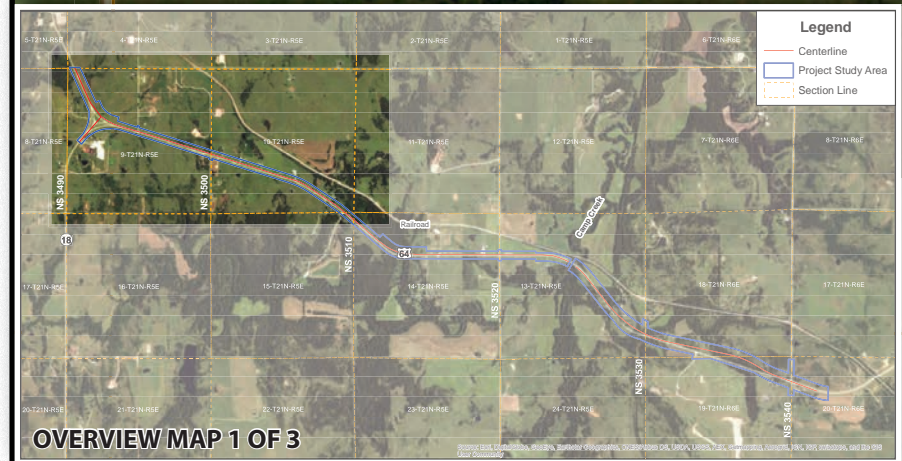
The proposed improvements will include constructing two (2) 12 feet wide driving lanes with eight (8) feet wide paved shoulders on an offset from the existing highway and correcting the substandard horizontal and vertical curves to provide better sight distance and increased safety for motorists. The offset alignment allows traffic to be maintained on the existing highway during construction.





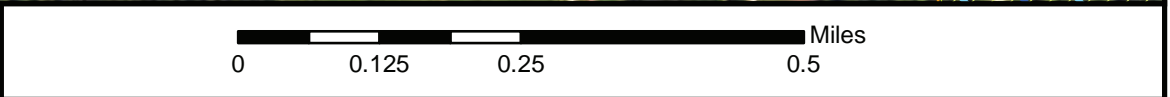
Legend

- Proposed Roadway
- Section Line
- Indian Electric Coop. Substation
- Tribal/Trust Property
- City of Cleveland Pump House
- Potential Water/Wetland
- Project Study Area



Source: Esri, DigitalGlobe, GeoEye, Earthstar Geographics, CNES/Airbus DS, USDA, USGS, AeroGRID, IGN, and the GIS User Community

Prepared for: Oklahoma Department of Transportation



Subject Project:
 Oklahoma Department of Transportation
 US-64 Reconstruction
 JP 24322(04) & (07)
 Pawnee County, Oklahoma

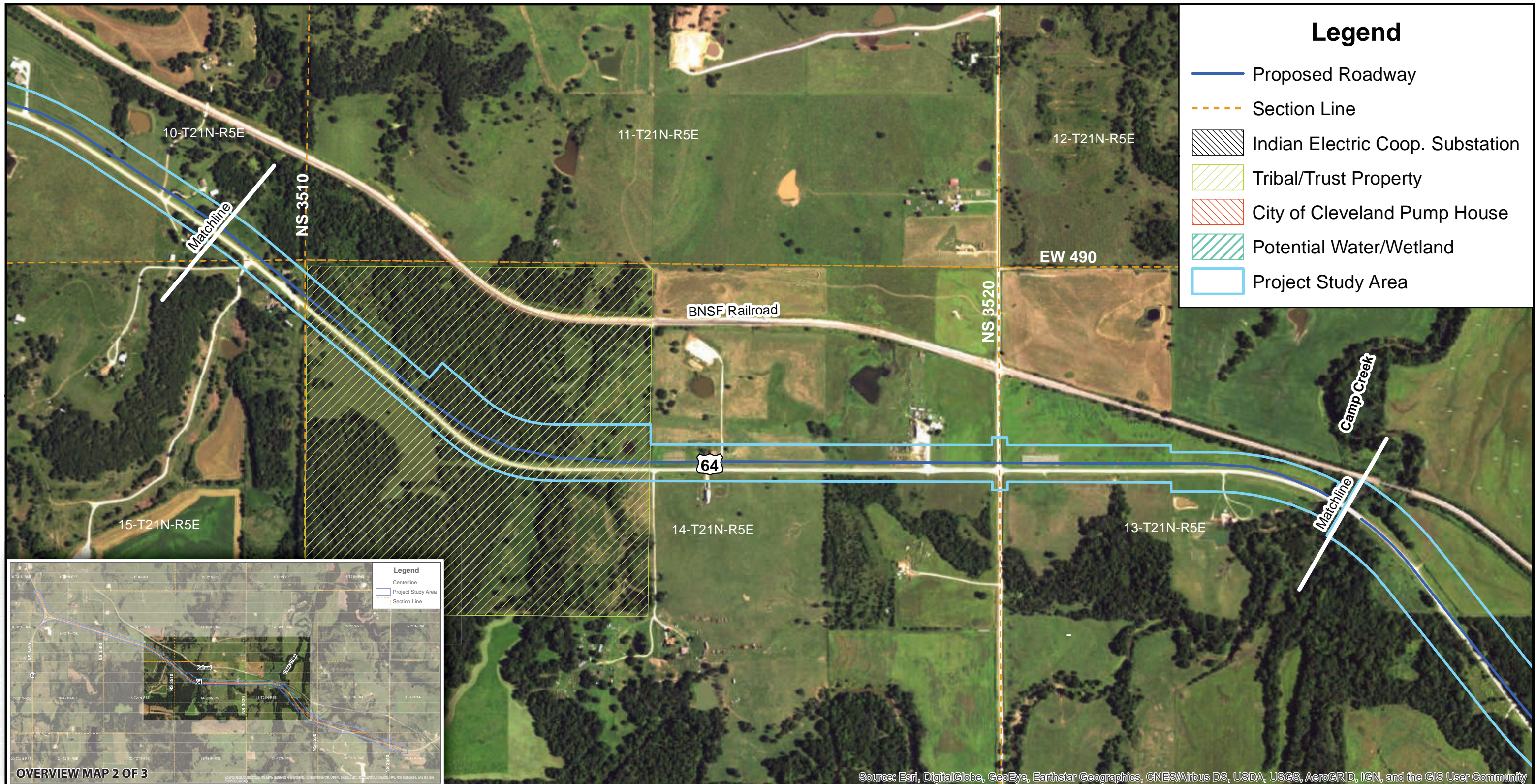
1:11,000

Study Area Map

US-64: From SH-18, East 6.5 Miles to 0.25 Miles East of Skedee Road.

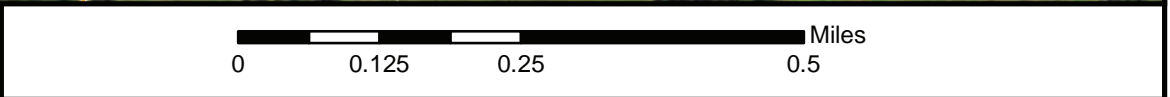
Prepared by: B. Scott; January 04, 2017

Page 1 of 3



Source: Esri, DigitalGlobe, GeoEye, Earthstar Geographics, CNES/Airbus DS, USDA, USGS, AeroGRID, IGN, and the GIS User Community

Prepared for: Oklahoma Department of Transportation



Subject Project:
 Oklahoma Department of Transportation
 US-64 Reconstruction
 JP 24322(04) & (07)
 Pawnee County, Oklahoma

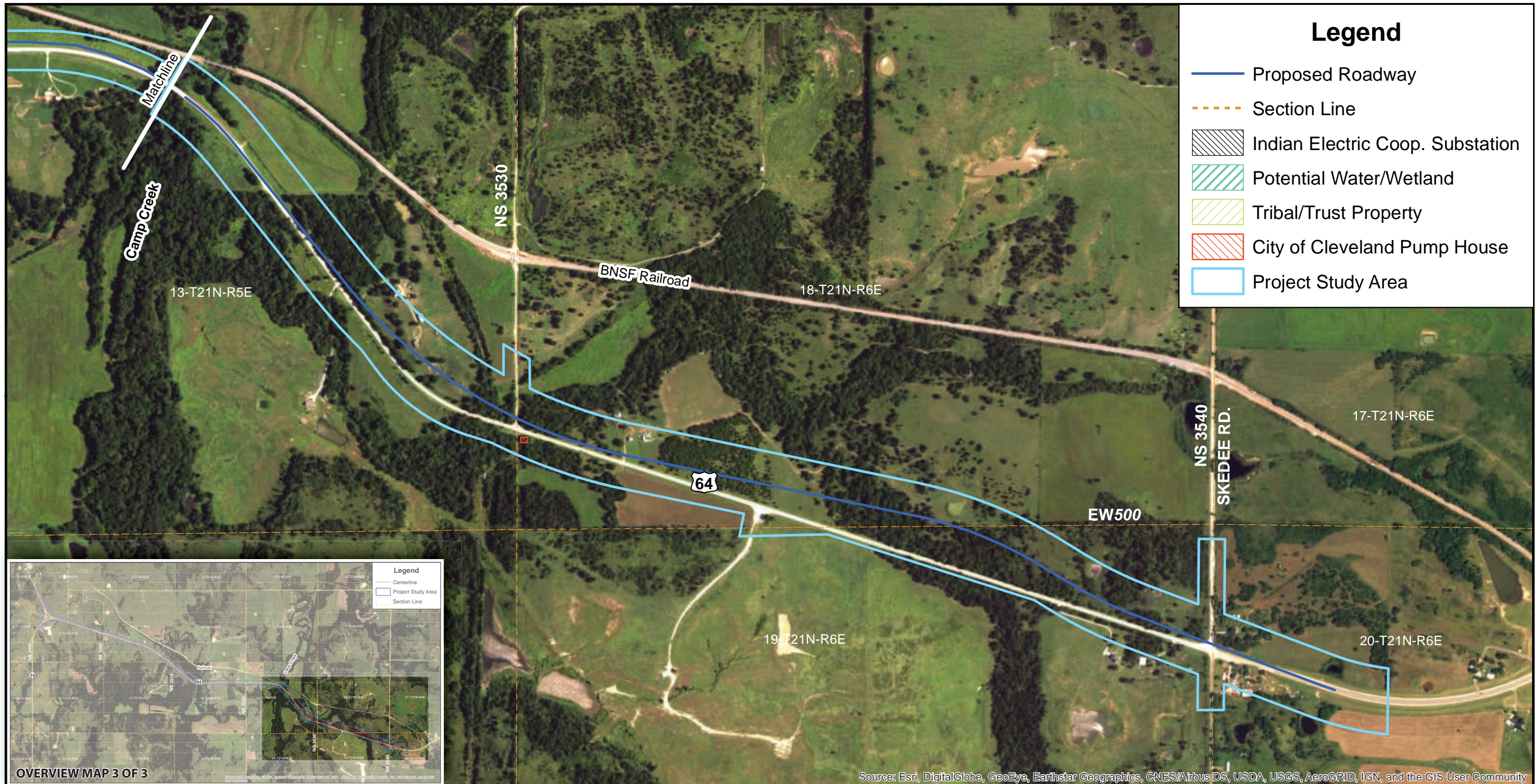
1:11,000

Study Area Map

US-64: From SH-18, East 6.5 Miles to 0.25 Miles East of Skedee Road.

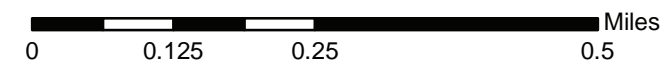
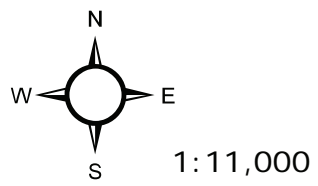
Prepared by: B. Scott; January 04, 2017

Page 2 of 3



Prepared for: Oklahoma Department of Transportation

Subject Project:
 Oklahoma Department of Transportation
 US-64 Reconstruction
 JP 24322(04) & (07)
 Pawnee County, Oklahoma



Study Area Map

US-64: From SH-18, East 6.5 Miles to 0.25 Miles East of Skedee Road.