



OKLAHOMA DEPARTMENT OF TRANSPORTATION

Environmental Programs Division

200 N.E. 21st Street
Oklahoma City, OK 73105-3204
www.odot.org

September 18, 2017

Re: SH-10A Improvements from SH-10 Junction East to SH-100 Junction, Muskogee & Sequoyah Counties, Oklahoma, State Job Piece: J/P No. 30562 (04), Project No.: J3-0562(004)

Dear Property Owner/Utility Company/Stakeholder:

The Oklahoma Department of Transportation (ODOT), in cooperation with the Federal Highway Administration (FHWA), is proposing improvements to State Highway 10A (SH-10A) from the SH-10 junction extending east to the SH-100 junction in Muskogee and Sequoyah Counties, Oklahoma. An Open House was held to present the Preferred Alternative on January 31, 2017, in the Town of Gore Community Building, Steve Owens Sports Complex, 313 Steve Owens Road, Gore, Oklahoma. At that meeting, seven improvement alternatives were presented, as well as the rationale for selection of Alternative 2 as the Preferred Alternative.

ODOT received comments from the public, as well as state and federal agencies. More than half of the written public comments received expressed support for one of the alternatives, with Alternative 1A receiving the most support. Approximately 23% of commenters were against any SH-10A improvements at all. Other public comments included concerns regarding the facility's posted speed, SH-10A collision data, potential impacts of the project to private property, and the role project stakeholders and local business owners had in selection of the Preferred Alternative.

The collision rate for this facility requires that safety improvements be made, i.e., correction of numerous substandard vertical and horizontal curves and the addition of shoulders. Alternative 1A provides no improvements to a segment of the existing facility in which approximately 20% of collisions have occurred. Therefore, ODOT considers Alternative 1A to not provide adequate horizontal alignment improvement and has decided to proceed with Alternative 2 as the Preferred Alternative. Alternative 2 incorporates all the improvements of Alternative 1A and, in addition, includes a section of new alignment offset west of existing SH-10A which will realign several substandard horizontal curves. For more information about this project, [including ODOT responses to public comments](#), please visit ODOT's webpage:

https://www.ok.gov/odot/Programs_and_Projects/Public_Meetings_and_Hearings/20170117.html

ODOT will move forward with preliminary design and environmental studies for the portion of Alternative 2 for SH 10A, starting 2 miles from SH 10 junction extending east to SH 100 Junction. Currently, ODOT has this project scheduled for construction in 2021. The first 2 miles of Alternative 2 for SH 10A is not currently included in ODOT's 8 Year Construction Program.

Should you have any questions or specific concerns, please contact our authorized agent, Diane Abernathy with Triad Design Group at (405) 919-0481 or dabernathy@triaddesigngroup.com. As always, your cooperation is greatly appreciated.

Sincerely,

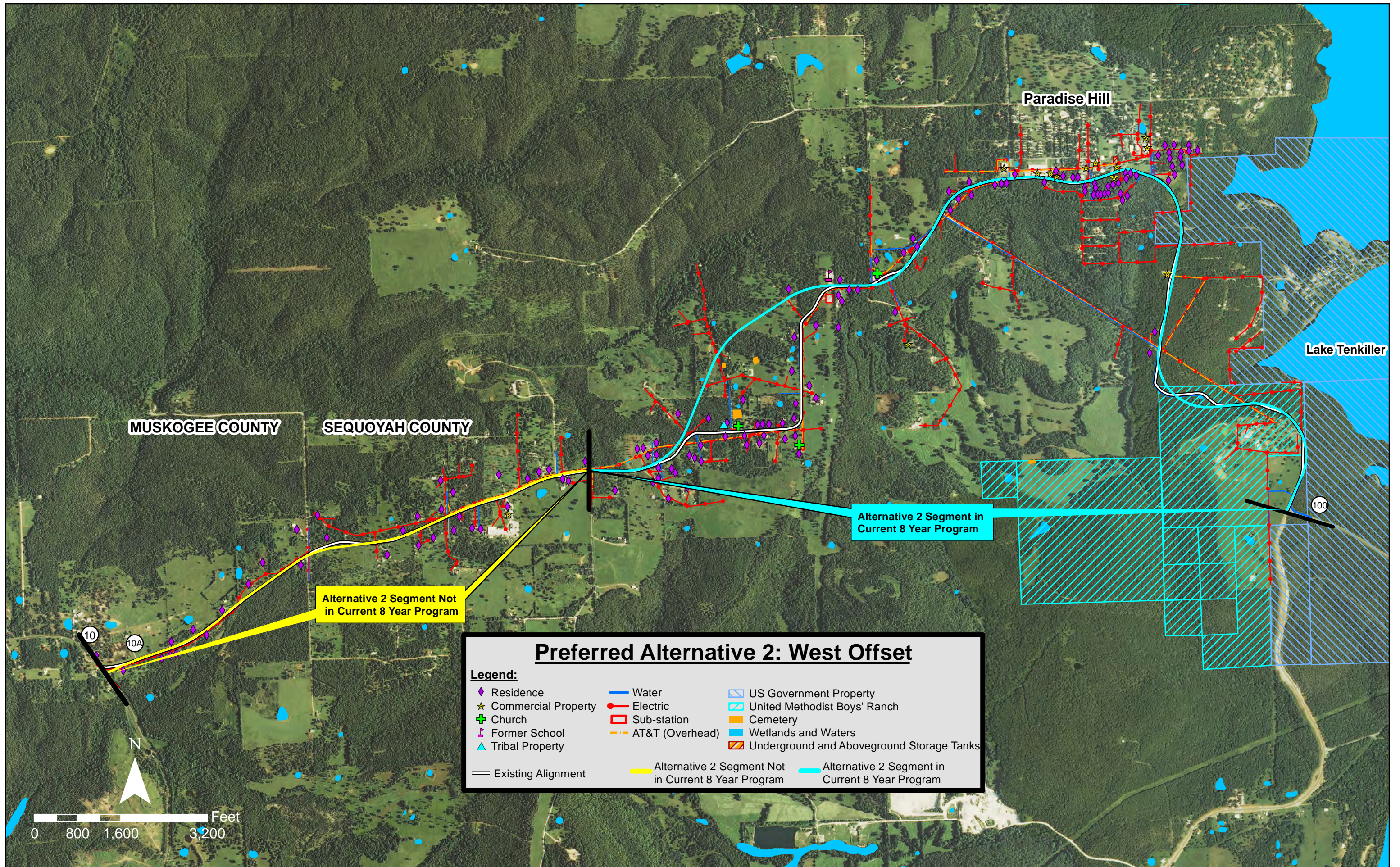
Siv Sundaram, P.E.
Environmental Programs Division Engineer

SS:AM:Triad:DA

Enclosure: Preferred Alternative with Constraints Graphic

"The mission of the Oklahoma Department of Transportation is to provide a safe, economical, and effective transportation network for the people, commerce and communities of Oklahoma."

AN EQUAL OPPORTUNITY EMPLOYER



MUSKOGEE COUNTY

SEQUOYAH COUNTY

Paradise Hill

Lake Tenkiller

Alternative 2 Segment Not in Current 8 Year Program

Alternative 2 Segment in Current 8 Year Program

Preferred Alternative 2: West Offset

Legend:

◆ Residence	— Water	▨ US Government Property
★ Commercial Property	— Electric	▨ United Methodist Boys' Ranch
⊕ Church	▭ Sub-station	▨ Cemetery
⌘ Former School	— AT&T (Overhead)	▨ Wetlands and Waters
▲ Tribal Property	▨ Underground and Aboveground Storage Tanks	
— Existing Alignment	— Alternative 2 Segment Not in Current 8 Year Program	— Alternative 2 Segment in Current 8 Year Program



N

10
10A

100