



Oklahoma Department
of Transportation

DOT PUBLIC HEARING

August 24th, 2017 @ 6:00 P.M

University Center Ballroom | Northeastern State University | 612 N. Grand Ave. | Tahlequah, OK 74464

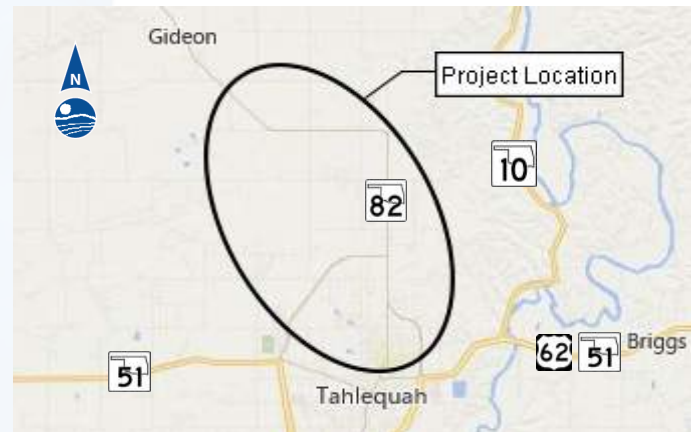
SH-82 • Cherokee County, OK • JP: 27101(04) Presentation of Proposed Alternatives & Solicitation of Public Input

Purpose of Meeting

To present the findings of the Environmental Assessment (EA) of the SH-82 improvement alternatives, and provide an opportunity for public statements regarding the proposed alternatives and the EA findings.

Project Background

The Oklahoma Department of Transportation (ODOT), in cooperation with the Federal Highway Administration (FHWA), proposes to reconstruct and widen SH-82 from the end of the Bertha Parker Bypass in Tahlequah north approximately 8 miles to Gideon. Existing SH-82 has narrow shoulders, sharp curves and rolling terrain, which result in inadequate sight distance to safely pass slow moving vehicles or to stop for vehicles that are turning or have stopped on the highway. This segment of SH-82 also has a large number of driveways. These factors contribute to a substantial accident history. In addition, the current Average Daily Traffic count on SH-82 is 8,140 vehicles per day with a future projected traffic count of 12,340 vehicles per day in 2045. The current two-lane highway cannot adequately handle this amount of traffic. A multi-lane highway is also desirable

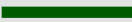

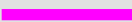
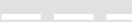
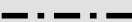


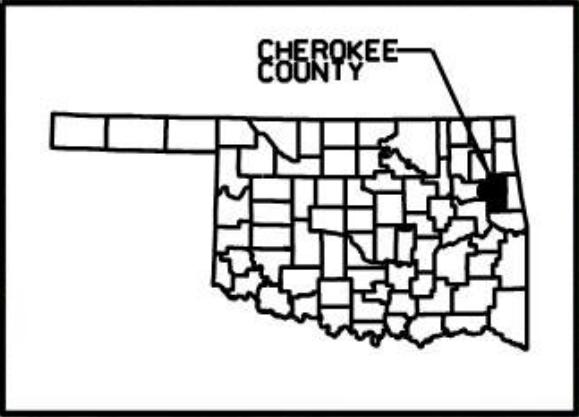
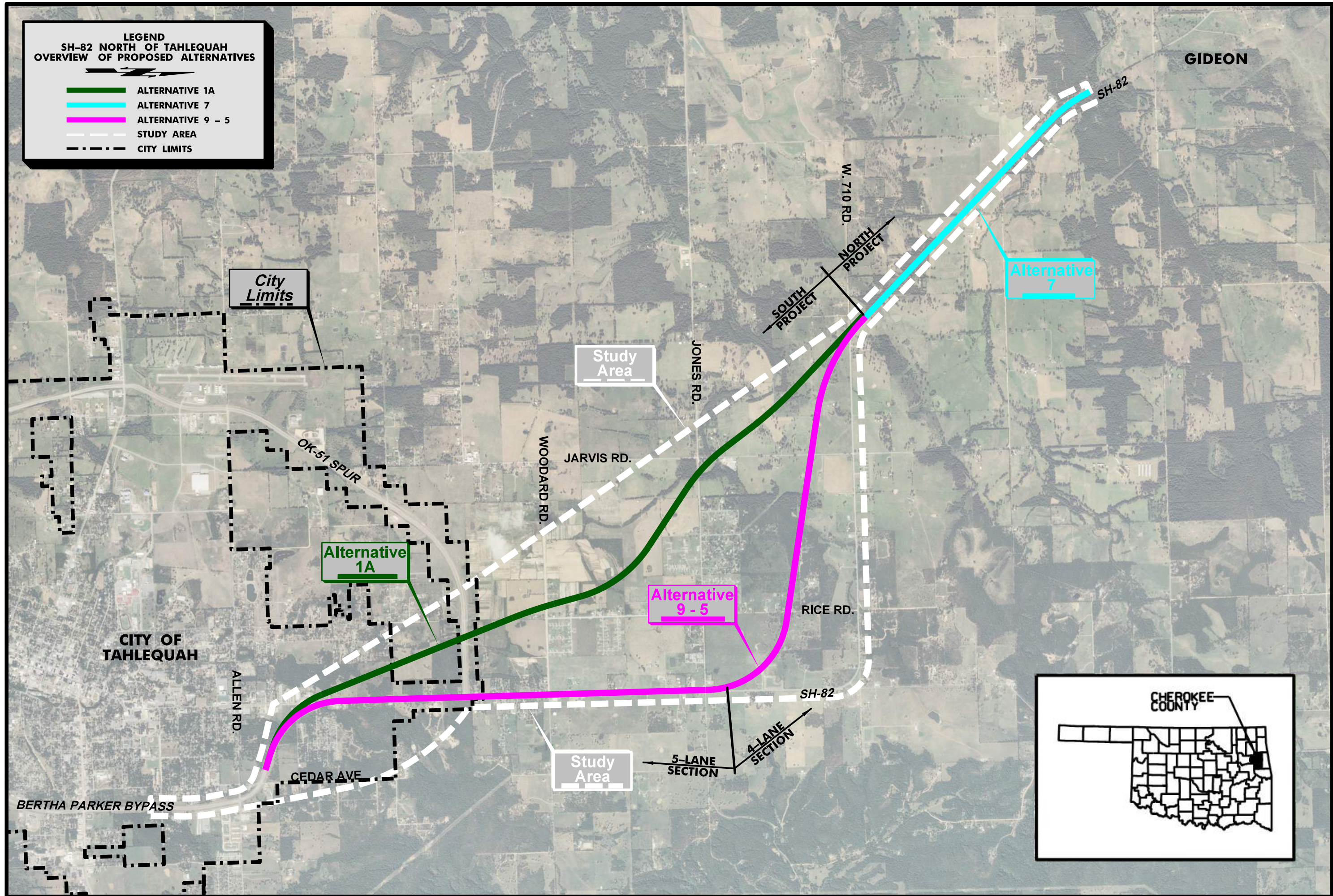
to complete the outer loop around the city of Tahlequah in anticipation of future traffic needs. The purpose of this project is to improve safety, reduce congestion, and complete the multi-lane loop around Tahlequah.

Over the last four years, ODOT has held a Stakeholder Meeting and two Public Meetings on this project. A total of 14 alternatives have been developed and presented to the public. These alternatives have included reconstructing SH-82 as a divided, 4-lane highway on a new alignment, and reconstructing SH-82 as a 5-lane highway on the existing alignment. Each of these alternatives has been thoroughly studied and analyzed for its ability to improve traffic operations and safety, engineering feasibility, impacts to the environment, and cost. These alternatives have been narrowed down to the three alternatives presented in the EA, two for the South Project (Alternatives 1A and 9-5) and one for the North Project (Alternative 7). The South Project extends from the Bertha Parker Bypass to W. 710 Road. For the South Project, Alternative 1A is proposed as a divided, 4-lane highway on a new alignment west of the existing SH-82. Alternative 9-5 is a combination alternative proposed as a 5-lane highway on the existing alignment from the Bertha Parker Bypass to Beaverson Road, and then transitions to a divided 4-lane roadway on a new alignment north of Beaverson Road to W. 710 Road. The North Project extends from W. 710 Road to Gideon. For the North Project, Alternative 7 is a divided 4-lane highway offset east of the existing SH-82.

The EA document is available for public review during a seven-week time period of August 4 through September 23, 2017. The EA includes the project purpose and need, range of alternatives considered, agency coordination, public involvements, and the social, economic, and environmental impacts of all of the alternatives under consideration. This EA is based on the environmental data collected to date; detailed environmental studies will be performed on the selected alternative.

LEGEND
SH-82 NORTH OF TAHLEQUAH
OVERVIEW OF PROPOSED ALTERNATIVES

-  ALTERNATIVE 1A
-  ALTERNATIVE 7
-  ALTERNATIVE 9 - 5
-  STUDY AREA
-  CITY LIMITS



*Vary based on location

PROPOSED TYPICAL SECTIONS



Divided 4-Lane Typical Section

Typical includes: four 12-foot wide driving lanes; 10-foot wide outside shoulders; 4-foot wide inside shoulders



5-Lane Typical Section

Typical includes: four 12-foot driving lanes; 16-foot wide center turn lane; 10-foot wide outside shoulders; curb & gutter

*Totals DO NOT include Toll Roads

DIVISION 1 ENGINEER: CHRIS WALLACE, P.E.

**Totals DO NOT include County Bridges

***Total Road Miles:**
1,109.50

***Total Interstate Miles:**
97.27

****Total Bridges:**
706

Counties: Adair, Cherokee, Haskell, McIntosh, Muskogee, Okmulgee, Sequoyah, Wagoner



PLEASE PROVIDE YOUR COMMENTS BY SEPTEMBER 23, 2017

For more information about the project

Kirsten McCullough

Environmental Project Manager

Garver

(918) 250-5922

kjmcullough@garverusa.com

ODOT ensures that no person or groups of persons shall, on the grounds of race, color, sex, religion, national origin, age, disability, retaliation or genetic information, be excluded from participation in, be denied the benefits of, or be otherwise subjected to discrimination under any and all programs, services, or activities administered by ODOT, its recipients, sub-recipients, and contractors. If any interested individual has a disability that may require accommodation to participate in this meeting, please contact ODOT ADA Coordinator at (405) 521-4140. Upon advance notification of the need for accommodation, reasonable arrangements will be made to provide accessibility to the meeting.

<http://www.odot.org/publicmeetings>

