



US-69 through Calera, JP31855(04)

Presentation of Proposed Improvements - Solicitation of Public Input

Purpose of Meeting

To present the proposed improvements to a four-mile segment of US-69 and to obtain public input on these improvements.

Project Background

The Oklahoma Department of Transportation (ODOT), in cooperation with the Federal Highway Administration (FHWA), is proposing improvements to a four-mile segment of US-69/75 beginning at Chickasaw Road (County Road NS369) near Calera, Oklahoma, extending north to the US-70 Bypass near Durant, Oklahoma. The purpose of the project is to improve efficiency of high volume freight traffic, improve safety, and reduce delay for local Calera traffic. In July 2016, the US-69 improvement project was selected as a candidate for the receipt of a Fostering Advancements in Shipping and Transportation for the Long-term Achievement of National Efficiencies (FASTLANE) grant.

Project Description

ODOT has tasked a consultant to study improvement alternatives while taking into consideration construction cost, right-of-way requirements, and environmental constraints. The proposed improvements for US-69 include changing traffic access from "full-access" where driveways are allowed off of US-69, to "access-controlled" where no driveways are allowed off of US-69, one-way frontage roads on both sides of US-69 to provide access to drives, interchanges at US-69/Main Street and US-69/Choctaw Road, a flyover ramp for southbound South 9th Avenue traffic destined to southbound US-69 (south of the casino), and a grade separation over US-69 and the Union Pacific Railroad connecting South McKinley Avenue and B Street. This new railway crossing will allow local traffic to move freely between east and west Calera without conflicts from rail or US-69 traffic.

PROJECT INFORMATION SUMMARY

- Total Programmed Estimated Cost of this project: **\$120 Million**
- Right-of-Way & Utility Relocation programmed to start in: **2018**
- Construction programmed to start in: **2019**

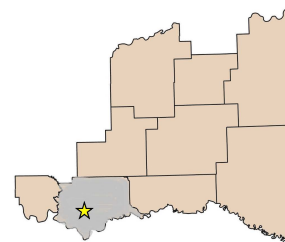
DIVISION 2 ENGINEER: ANTHONY ECHELLE, P.E.

Counties:
Atoka, Bryan, Choctaw, Latimer, LeFlore, McCurtain,
Marshall, Pittsburg, Pushmataha

Total Road Miles:
1,657.20

***Total Bridges:**
866

*Total DOES NOT include County Bridges



PLEASE PROVIDE YOUR COMMENTS BY July 5, 2017

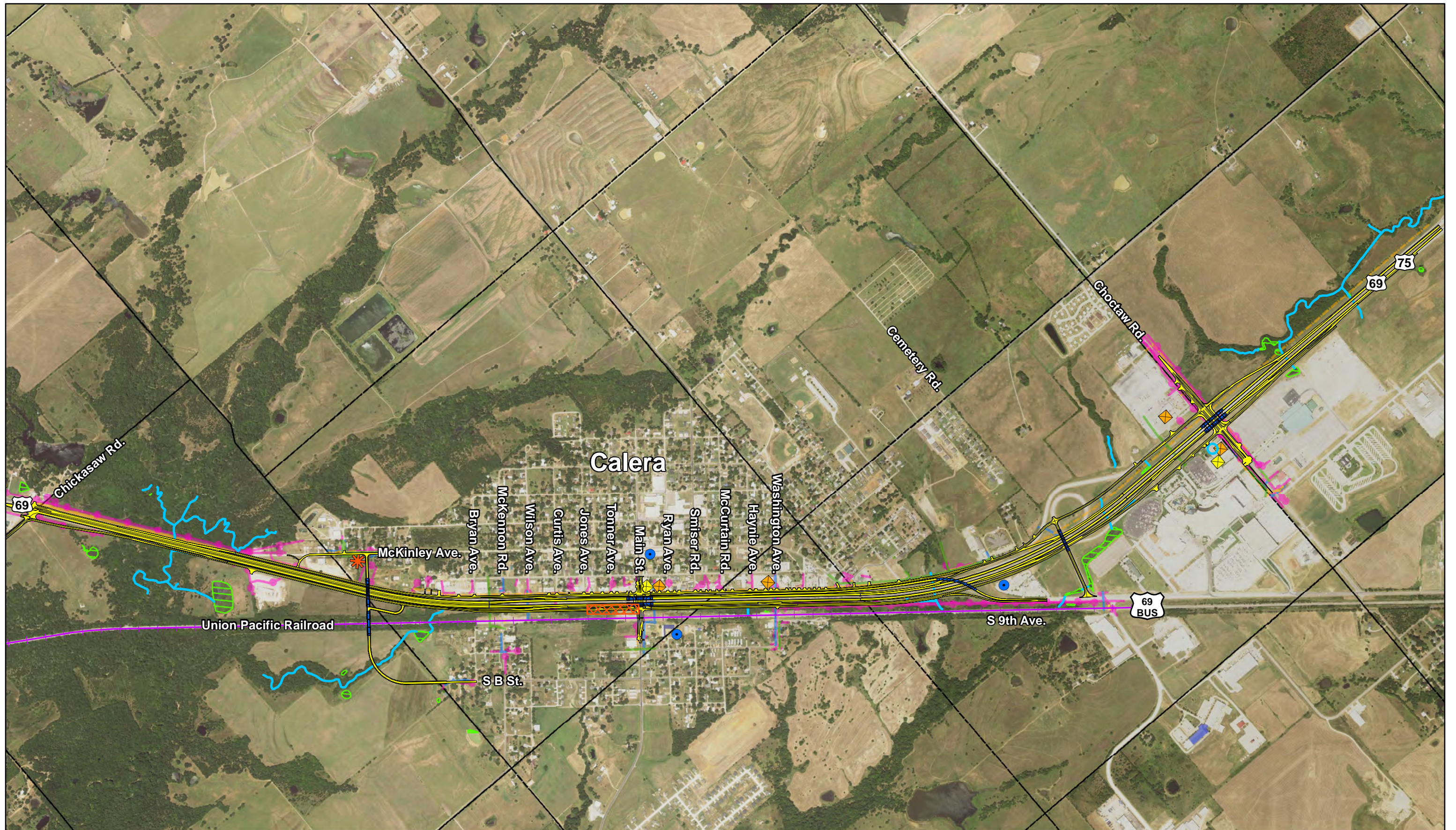
For more information about the project, contact:

Anjanette King
Environmental Project Manager, Division 2
Oklahoma Department of Transportation
(405) 521-2325
aking@odot.org

Diane Abernathy, P.E.
Senior Environmental Project Manager
Triad Design Group
(405) 919-0481
dabernathy@triaddesigngroup.com

<http://www.odot.org/publicmeetings>





Map Features

- Section Lines
- Union Pacific Railroad
- Proposed Roadway
- Proposed Bridges

Environmental Constraints

- Potentially Jurisdictional Wetlands
- Potentially Jurisdictional Streams
- Water Well
- Monitoring Well

Utilities

- Railroad Maintenance Materials Stock Pile
- Potential Outdoor Chemical Storage
- Underground Communications Field Station
- Underground Fuel Storage
- Leaking Underground Storage Tank

Utilities

- Electrical Power Line
- Gas Line
- Underground Telephone Line
- Water Line
- Sanitary Sewer Line



Job No. 31855(04)
 Bryan County
 US-69, from Calera
 to US-70 Interchange

Proposed Improvements Constraints Map