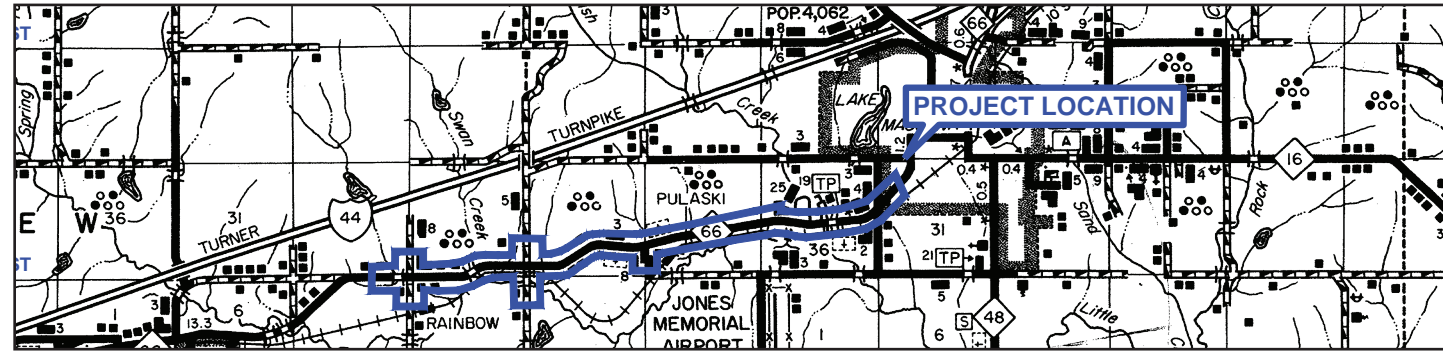


PROPOSED TYPICAL SECTION FOR SH-66



DIVISION 8 INFORMATION

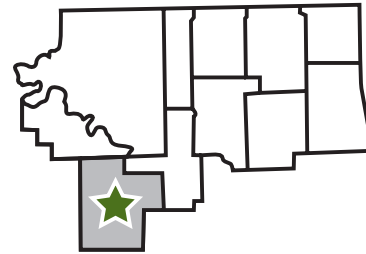
Division 8 Engineer
Randle White, P.E.

Counties
Craig, Creek, Delaware, Mayes, Nowata, Osage,
Ottawa, Pawnee, Rogers, Tulsa, Washington

Total Road Miles*
1,664.63

Total Interstate Miles*
39.56

Total Bridges**
1,117



*Totals do not include Toll Roads | **Totals do not include County Bridges

PLEASE PROVIDE YOUR COMMENTS BY MAY 1, 2018

For more information about the project, please contact us below:



David Saulsberry
NEPA Project Manager
Division 8
405.521.2315
environment@odot.org



Jared Bechtol
Environmental Project Manager
CEC Corporation
405.753.4200
jared.bechtoll@connectcec.com

The Oklahoma Department of Transportation (ODOT) ensures that no person or groups of persons shall, on the grounds of race, color, sex, religion, national origin, age, disability, retaliation or genetic information, be excluded from participation in, be denied the benefits of, or be otherwise subjected to discrimination under any and all programs, services, or activities administered by ODOT, its recipients, sub-recipients, and contractors. To request an accommodation please contact the ADA Coordinator at 405-521-4140 or the Oklahoma Relay Service at 1-800-722-0353. If you have any ADA or Title VI questions email ODOT-ada-titlevi@odot.org.

<http://www.odot.org/publicmeetings>



The Oklahoma Department of Transportation
PUBLIC OPEN HOUSE
SH-66 • Creek County, OK • JP:28890(04)

Public Open House
on Proposed
Improvements
to SH-66 from
Depew to Bristow

Tuesday
April 17, 2018
5:30-7:30pm

Bristow Public Library
111 W. 7th Ave.
Bristow, OK 74010

PURPOSE OF MEETING

The purpose of the meeting is to present the proposed design for a segment of SH-66 between Depew and Bristow from S. 433rd W. Avenue (NS 367) to S. 369th W. Avenue (NS 371) in Creek County and to get public input.

PROJECT DESCRIPTION

The Oklahoma Department of Transportation (ODOT), in cooperation with the Federal Highway Administration (FHWA) is improving a segment of SH-66 between Depew and Bristow in Creek County. This segment begins approximately 1.5 miles east of Depew, Oklahoma at the intersection of SH-66 and S. 433rd W. Avenue and extends east approximately 4.2 miles to the intersection of SH-66 and S. 369th W. Avenue in Bristow, Oklahoma. The purpose of the project is to improve the safety of a segment of roadway with no shoulders and correct unsafe curves, hills, and intersections. The proposed improvements are anticipated to include widening SH-66 to add shoulders and reconstruction to improve the safety of hills and curves. SH-66 will be shifted slightly to the north for two extents of the project due to the close proximity of the railroad. The proposed roadway will have two 12-foot wide driving lanes with 8-foot wide paved shoulders. The section of roadway near Bristow that already has 8-foot wide paved shoulders will just be resurfaced.


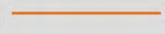
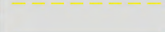


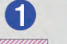

PROJECT INFORMATION SUMMARY

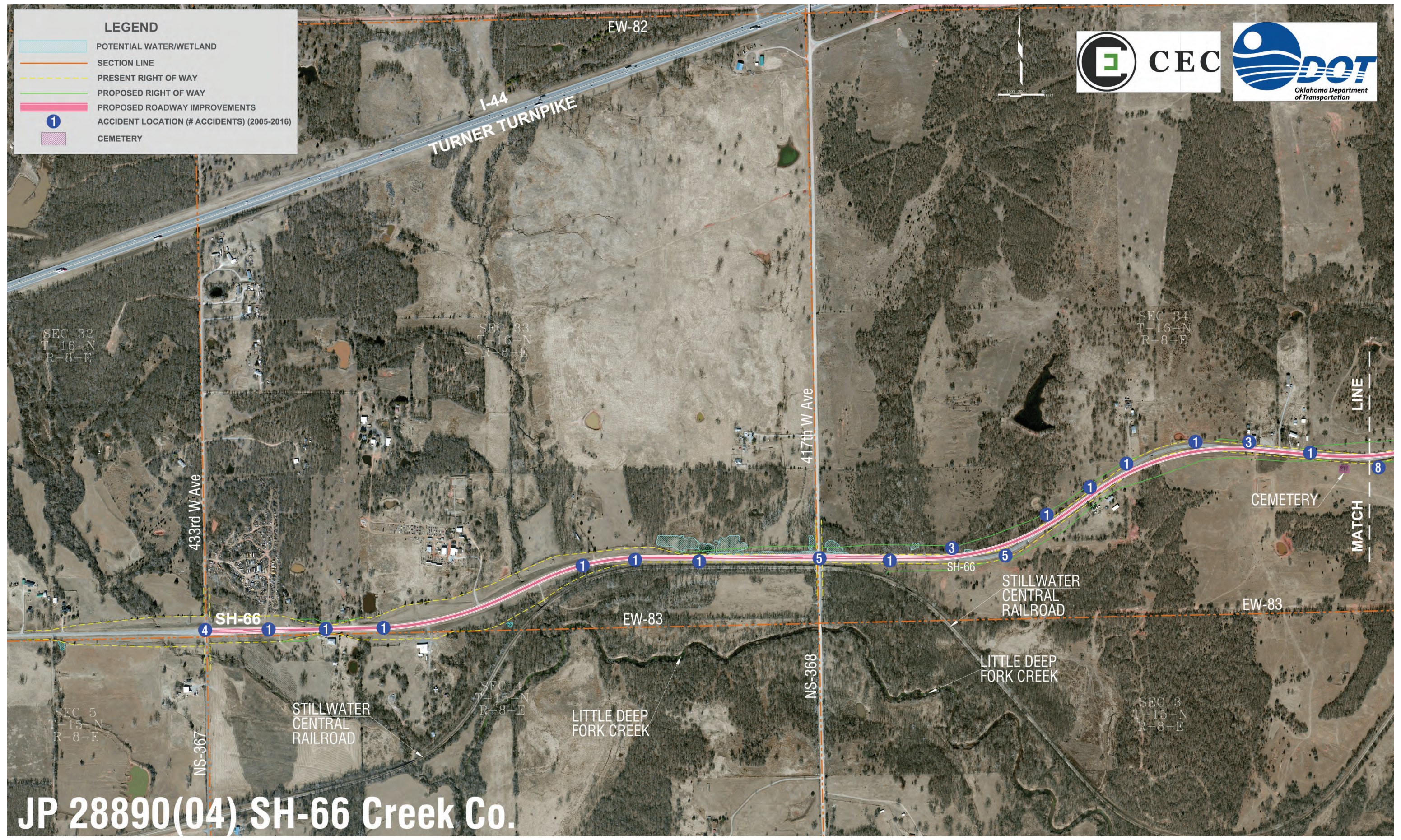
- Current Annual Average Daily Traffic (AADT) in year 2017: 3,300 Vehicles per day
- Future Estimated AADT by year 2042: 5,980 Vehicles per day
- Estimated Total Cost is \$12.0 Million
- Right-of-Way and Utility Relocation projected to start in 2019
- Construction projected to start in 2024
- Proposed Improvements will include:
 - Reconstruct unsafe hills and curves
 - Construct 8-foot wide shoulders
 - Extend or replace drainage pipes and culverts
 - Add turn lanes at 433rd Ave., 417th Ave. and 369th Ave. intersections
- Minimal traffic impacts expected

NOTES



LEGEND

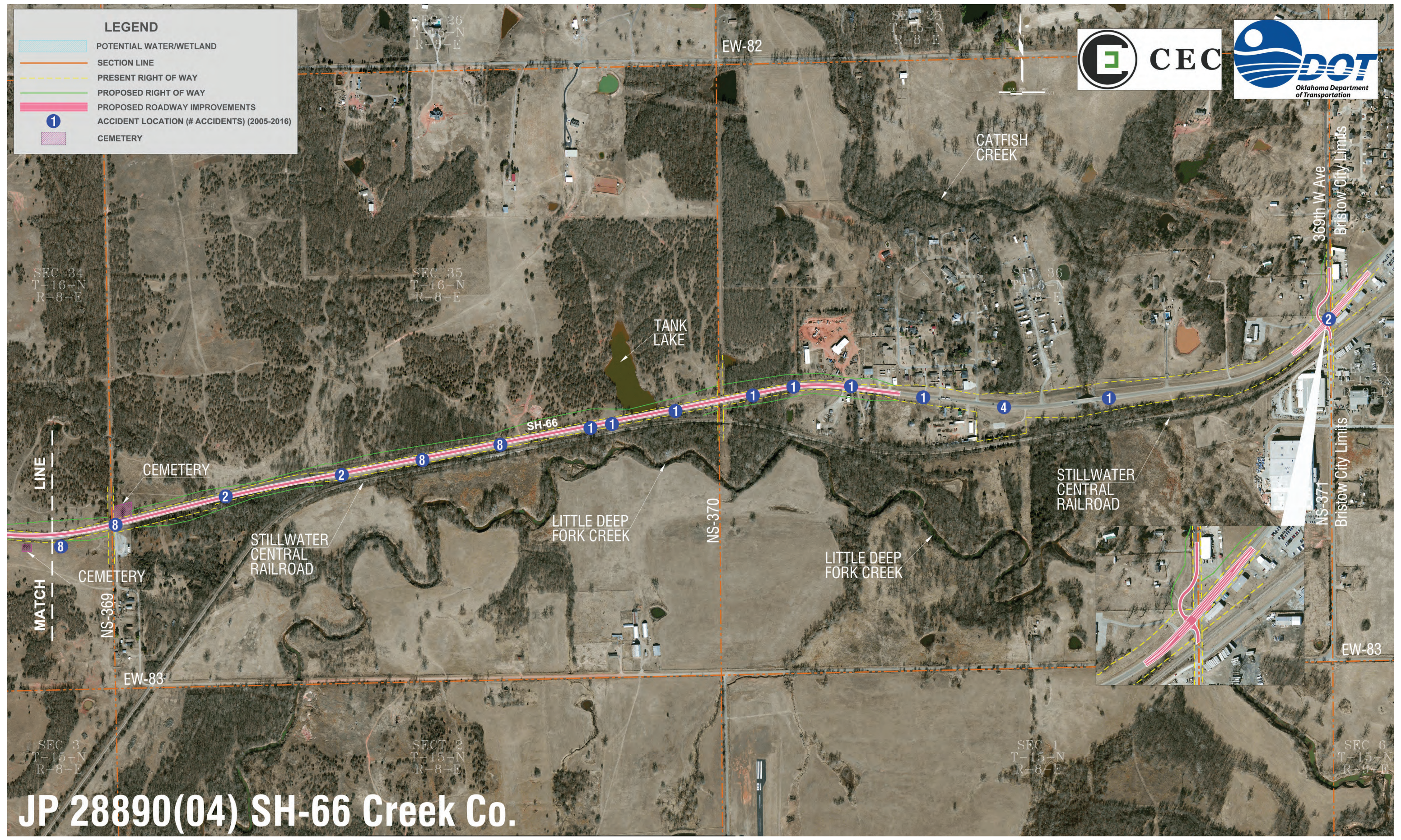
-  POTENTIAL WATER/WETLAND
-  SECTION LINE
-  PRESENT RIGHT OF WAY
-  PROPOSED RIGHT OF WAY
-  PROPOSED ROADWAY IMPROVEMENTS
-  ACCIDENT LOCATION (# ACCIDENTS) (2005-2016)
-  CEMETERY



JP 28890(04) SH-66 Creek Co.

LEGEND

- POTENTIAL WATER/WETLAND
- SECTION LINE
- PRESENT RIGHT OF WAY
- PROPOSED RIGHT OF WAY
- PROPOSED ROADWAY IMPROVEMENTS
- 1 ACCIDENT LOCATION (# ACCIDENTS) (2005-2016)
- CEMETERY



JP 28890(04) SH-66 Creek Co.