

PROPOSED TYPICAL SECTION



SH-123: 2-Lane Typical Section

Typical includes: two 14-foot wide driving lanes; and curb and gutter



Hensley Boulevard: 5-Lane Typical Section

Typical includes: four 11-foot wide driving lanes; 12-foot wide center turn lane; and curb and gutter

PROJECT INFORMATION

- Total programmed estimated cost of this project: \$8.6 Million
- Right-of-way & Utility relocation programmed to start in: 2019
- Construction programmed to start in: 2021
- Current Annual Average Daily Traffic (AADT) in year 2018: 5,670 Vehicles per day
- Future Estimated AADT by year 2038: 7,960 Vehicles per day
- SH-123 is going to be closed during construction
- Hensley Boulevard is going to be open during construction

NOTES:

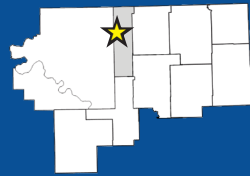
For additional information please contact:

Jennifer Koscelny
Environmental Project Manager
Able Consulting
(918) 272-4282
jkoscelny@ableconsulting.net



DIVISION 8

Division Engineer:
Randle White, P.E.



Counties:
Craig
Creek
Delaware
Mayes
Nowata
Osage
Ottawa
Pawnee
Rogers
Tulsa
Washington

Total Road Miles:
1,664.63

Total Interstate Miles:
39.56

Total Bridges:
1,117

Totals DO NOT include Toll Roads



www.odot.org/publicmeetings

THE OKLAHOMA DEPARTMENT OF TRANSPORTATION
PUBLIC MEETING
December 20, 2018 6:00 p.m.

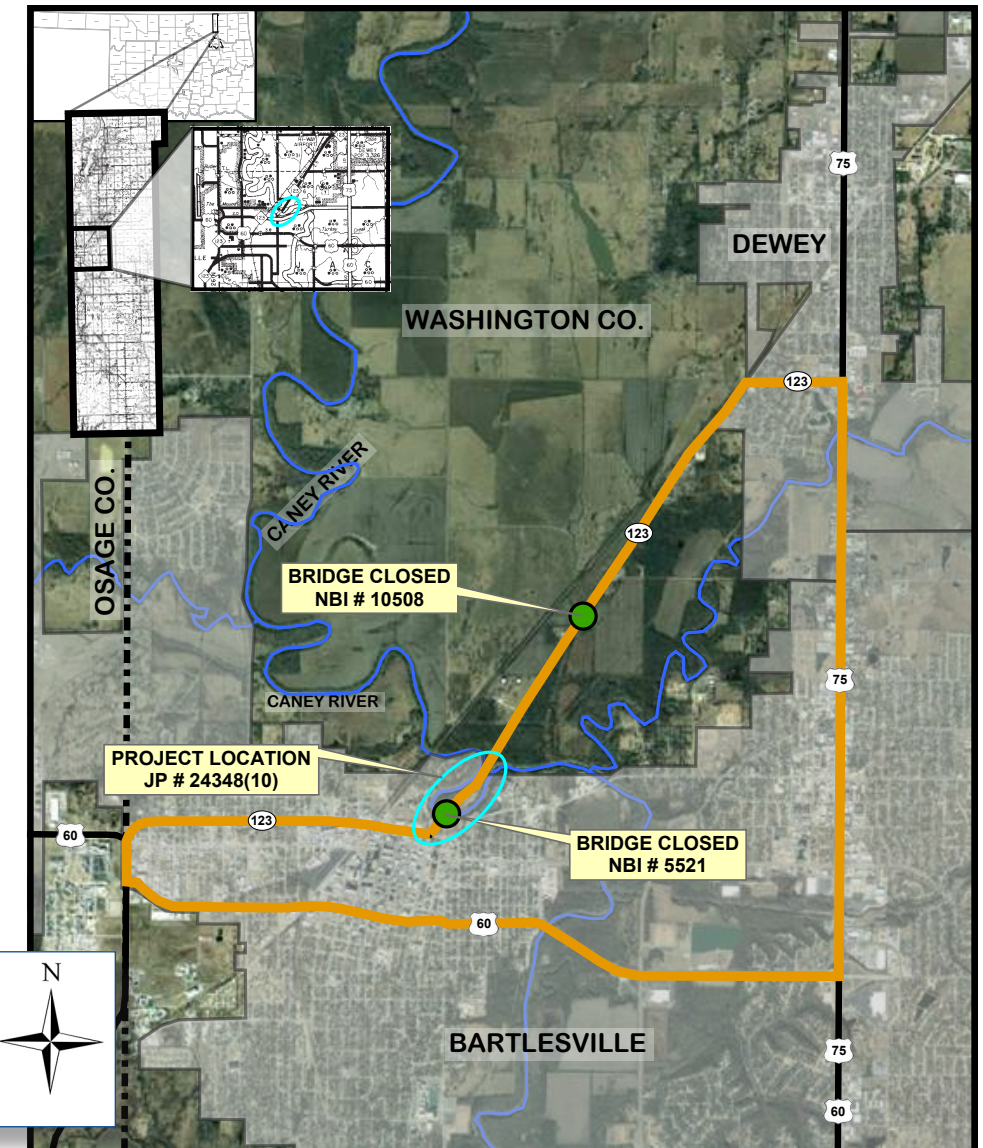
Bartlesville Community Center
300 S.E. Adams Blvd.
Bartlesville, OK 74003

SH-123
Washington County
JP: 24348(10)

DESCRIPTION

The Oklahoma Department of Transportation (ODOT), in cooperation with the Federal Highway Administration (FHWA) is proposing to improve the bridge crossing over the Caney River on State Highway 123 (SH-123), located 1.68 miles north of the SH-123/US-60 junction in the City of Bartlesville in Washington County. The purpose of the project is to provide a structurally sound crossing and preserve the transportation continuity over the Caney River on SH-123 and improve intersection safety.

As part of our efforts to keep the public informed of this project and involved in the decision making process, ODOT has scheduled a public meeting. The purpose of this meeting is to present the preferred alternative, environmental impacts and obtain comments on the preferred alternative. This will aid ODOT in moving forward with the completion of the environmental studies, design, and subsequent construction.



- GET INVOLVED -

If you have any questions or comments about the Oklahoma Department of Transportation's proposed projects, please visit our website at www.odot.org/publicmeetings to fill out an official comment form, send an email to environment@odot.org, or send a letter to:

OKLAHOMA DEPARTMENT OF TRANSPORTATION
Environmental Programs Division, 200 N.E. 21st St., Oklahoma City, OK 73105

Comments due by January 13, 2019

CONTACT INFORMATION OPTIONAL



CONSTRAINTS LEGEND

EXISTING SH-123	FLOODWAY	NRHP SITE	WETLANDS	TREE WELLS
FLOODPLAIN	TRAILS	PARKS		

PREFERRED ALIGNMENT

PROPOSED BRIDGE
OPTION E

SH-123 OVER THE CANEY RIVER;
WASHINGTON COUNTY - JP 24348(10)