



Oklahoma Department
of Transportation

DOT PUBLIC MEETING

February 28th, 2019 @ 6:00 P.M

Frisco Conference Center | 101 South 4th Street | Clinton, OK 73601

I-40 Exit 65 (Gary Boulevard) • Custer County, OK • JP: 31482(04) Presentation of the Selected Alternative

Purpose of Meeting:

To inform the public of the selected alternative for improvements to the I-40/Gary Boulevard and I-40/Neptune Drive interchanges (Exits 65 and 65A).

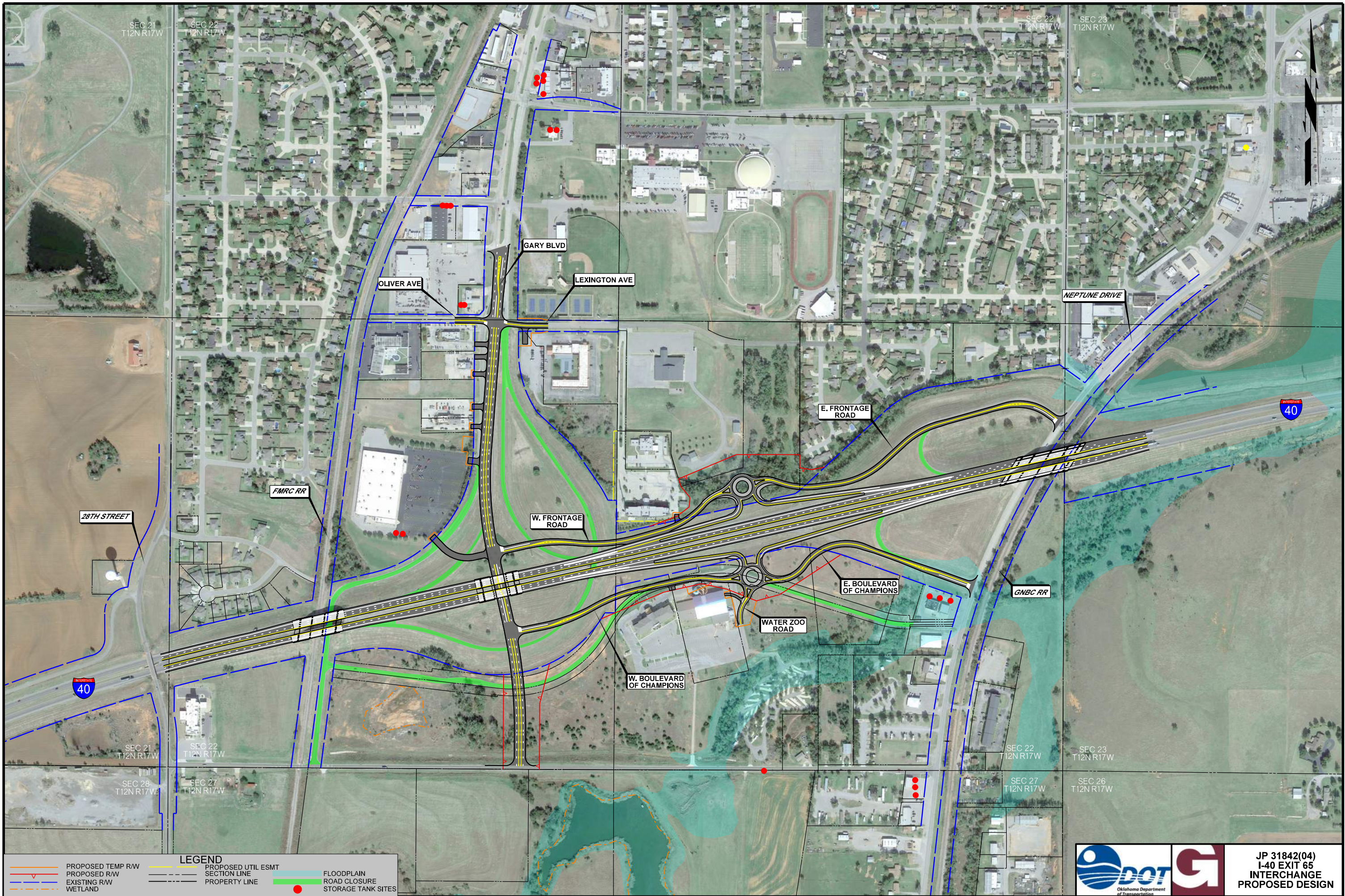
Project Background:

The Oklahoma Department of Transportation (ODOT) completed a study of six initial alternatives and held a public meeting on May 24, 2016 in Clinton to present these concepts and obtain comments. In response to public feedback, ODOT developed two additional alternatives to provide improved mobility on I-40 and improved access for both interstate and local traffic. These alternatives were evaluated taking into consideration construction costs, right-of-way and utility costs, and environmental constraints, which resulted in the selection of an alternative for the corridor. ODOT will present the selected alternative at this second public meeting.



Purpose and Description of Current Project:

The purpose of this project is to improve safety, traffic operations, and improve mobility in the I-40 corridor and to make improvements to adjacent local streets and intersections. The current interchange ramps (Exit 65 – Gary Boulevard and Exit 65A – Neptune Dr.) are close in proximity, contributing to traffic flow issues along Gary Boulevard. Additionally, the City of Clinton is continuing to experience commercial growth, which is anticipated to generate future traffic volumes beyond the capacity of the existing interchange and adjacent intersections. The selected design alternative will consolidate Exit 65 and Exit 65A into one new interchange by utilizing two-way frontage roads with modern roundabouts at each frontage road midpoint. This design will provide access to both directions of I-40 from Gary Boulevard and Neptune Drive. The project will also improve local road traffic operations and access to current and future businesses by extending Gary Boulevard south to Chapman Road and providing businesses with direct access. Red Wheat Drive will no longer be needed and will be removed. The intersection of Gary Boulevard with Oliver Drive/Lexington Avenue will be improved to a more traditional four-leg intersection to reduce driver confusion.



LEGEND

- PROPOSED TEMP R/W
- PROPOSED R/W
- EXISTING R/W
- WETLAND
- PROPOSED UTIL ESMT
- SECTION LINE
- PROPERTY LINE
- FLOODPLAIN
- ROAD CLOSURE
- STORAGE TANK SITES



**JP 31842(04)
I-40 EXIT 65
INTERCHANGE
PROPOSED DESIGN**

