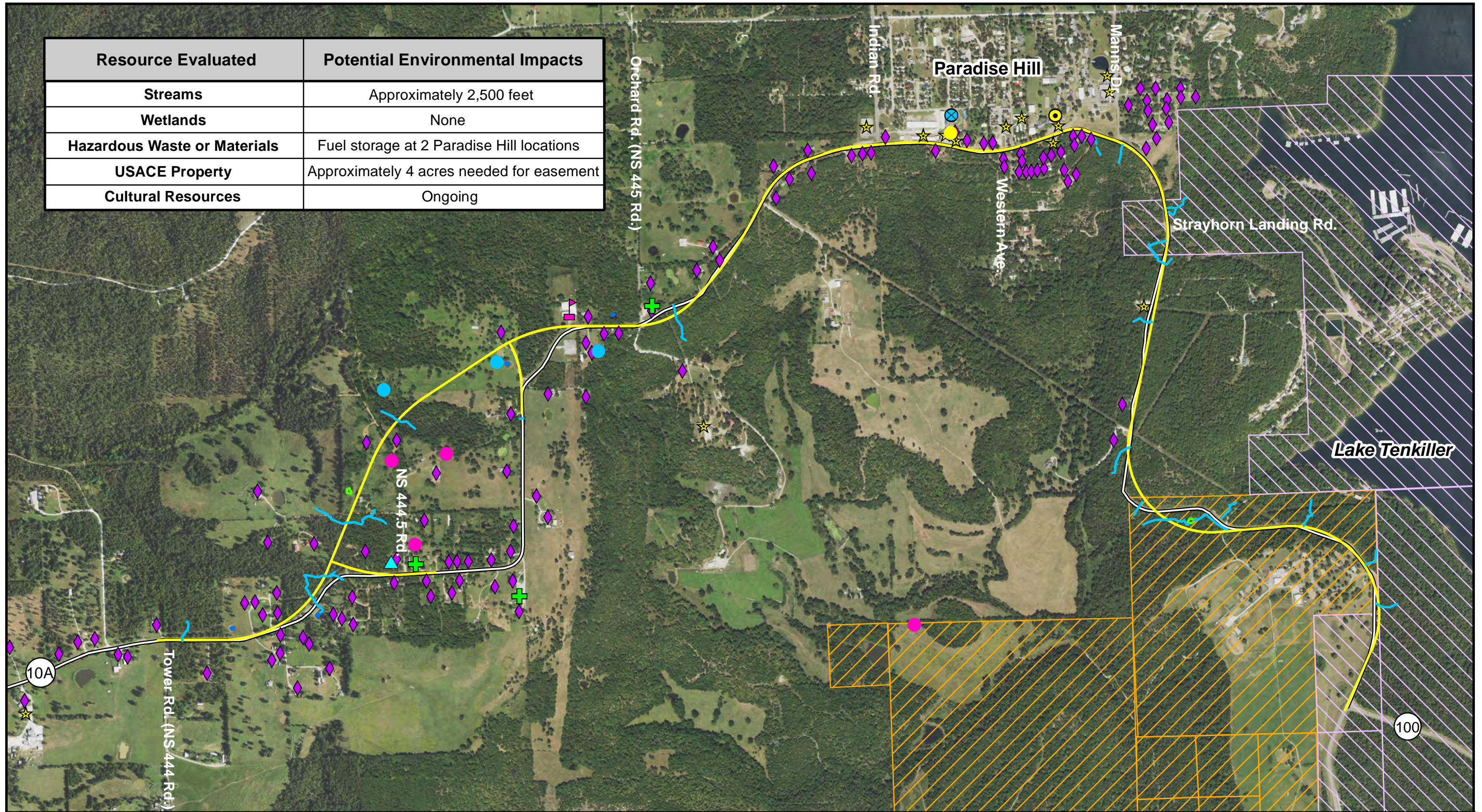
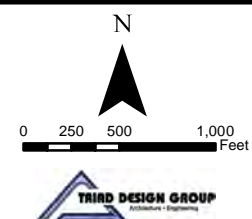


Resource Evaluated	Potential Environmental Impacts
Streams	Approximately 2,500 feet
Wetlands	None
Hazardous Waste or Materials	Fuel storage at 2 Paradise Hill locations
USACE Property	Approximately 4 acres needed for easement
Cultural Resources	Ongoing



Legend:

- Proposed SH-10A
- ◆ Residence
- + Church
- ~ Potential Waterways
- Open Water
- ▨ Potential Wetlands
- Aboveground Storage Tanks
- Underground Storage Tanks
- Domestic Water Well
- ⊗ Groundwater Monitoring Wells
- ▨ US Government Property
- ▨ United Methodist Boys' Ranch
- Cemetery
- ▲ Former School
- ★ Commercial Property
- ▲ Tribal Property



**SH-10A Improvements
Preferred Alternative
Environmental Constraints Map**